

Data Path : Z:\pestpcbsrv\HPCHEM1\ECD_L\Data\PL122223\
 Data File : PL087377.D
 Signal(s) : Signal #1: ECD1A.ch Signal #2: ECD2B.ch
 Acq On : 22 Dec 2023 17:59
 Operator : AR\AJ
 Sample : 05899-02
 Misc :
 ALS Vial : 12 Sample Multiplier: 1

Instrument :
 ECD_L
 ClientSampleId :

Integration File signal 1: autoint1.e
 Integration File signal 2: autoint2.e
 Quant Time: Dec 22 20:02:46 2023
 Quant Method : Z:\pestpcbsrv\HPCHEM1\ECD_L\methods\PL121523.M
 Quant Title : GC Extractables
 QLast Update : Sat Dec 16 04:03:23 2023
 Response via : Initial Calibration
 Integrator: ChemStation

Volume Inj. : 1 µl
 Signal #1 Phase : ZB-MR2 Signal #2 Phase: ZB-MR1
 Signal #1 Info : 30M x 0.32mm x0.2 Signal #2 Info : 30M x 0.32mm x0.5µm

Compound	RT#1	RT#2	Resp#1	Resp#2	ng/ml	ng/ml
System Monitoring Compounds						
1) SA Tetrachlo...	3.423	2.677	55535344	22821687	14.757	13.558
28) SA Decachlor...	8.981	7.867	43793105	19986586	12.843	11.834
Target Compounds						
2) A alpha-BHC	0.000	3.202	0	35086	N.D.	0.014 #
3) MA gamma-BHC...	0.000	3.515	0	628327	N.D.	0.259 #
4) MA Heptachlor	4.808	3.874	309656	218062	0.058	0.091 #
5) MB Aldrin	5.141f	4.121f	477528	141858	0.092	0.059 #
6) B beta-BHC	4.432	3.818	2839781	42926	1.236	0.041 #
7) B delta-BHC	0.000	4.052	0	702918	N.D.	0.287 #
8) B Heptachlo...	0.000	4.638	0	313042	N.D.	0.141 #
9) A Endosulfan I	6.002f	5.031	2854170	3148549	0.639	1.457 #
10) B gamma-Chl...	5.839	4.898	748102	537776	0.154	0.235 #
11) B alpha-Chl...	5.922	4.993f	332559	1719688	0.069	0.745 #
12) B 4,4'-DDE	0.000	5.168	0	275703	N.D.	0.139 #
13) MA Dieldrin	6.237	5.278	937514	-134411	0.202	N.D. #
14) MA Endrin	6.480	5.581	19843	197607	0.005	0.099 #
15) B Endosulfa...	0.000	5.856	0	25708	N.D.	0.013 #
16) A 4,4'-DDD	6.606f	0.000	717033	0	0.217	N.D. #
17) MA 4,4'-DDT	6.960f	6.005f	4979707	1979434	1.324	1.073
18) B Endrin al...	0.000	6.050	0	716277	N.D.	0.488 #
19) B Endosulfa...	7.056	6.296f	1961465	457558	0.500	0.243 #
22) Mirex	8.057f	6.975f	684647	574045	0.203	0.323 #
23) Chlordane-1	4.624f	3.666f	705415	554321	4.471	8.936 #
24) Chlordane-2	5.141	0.000	477528	0	2.741	N.D. #
25) Chlordane-3	5.839	4.898	748102	537776	1.073	2.433 #
26) Chlordane-4	5.922	4.993f	332559	1719688	0.389	7.386 #

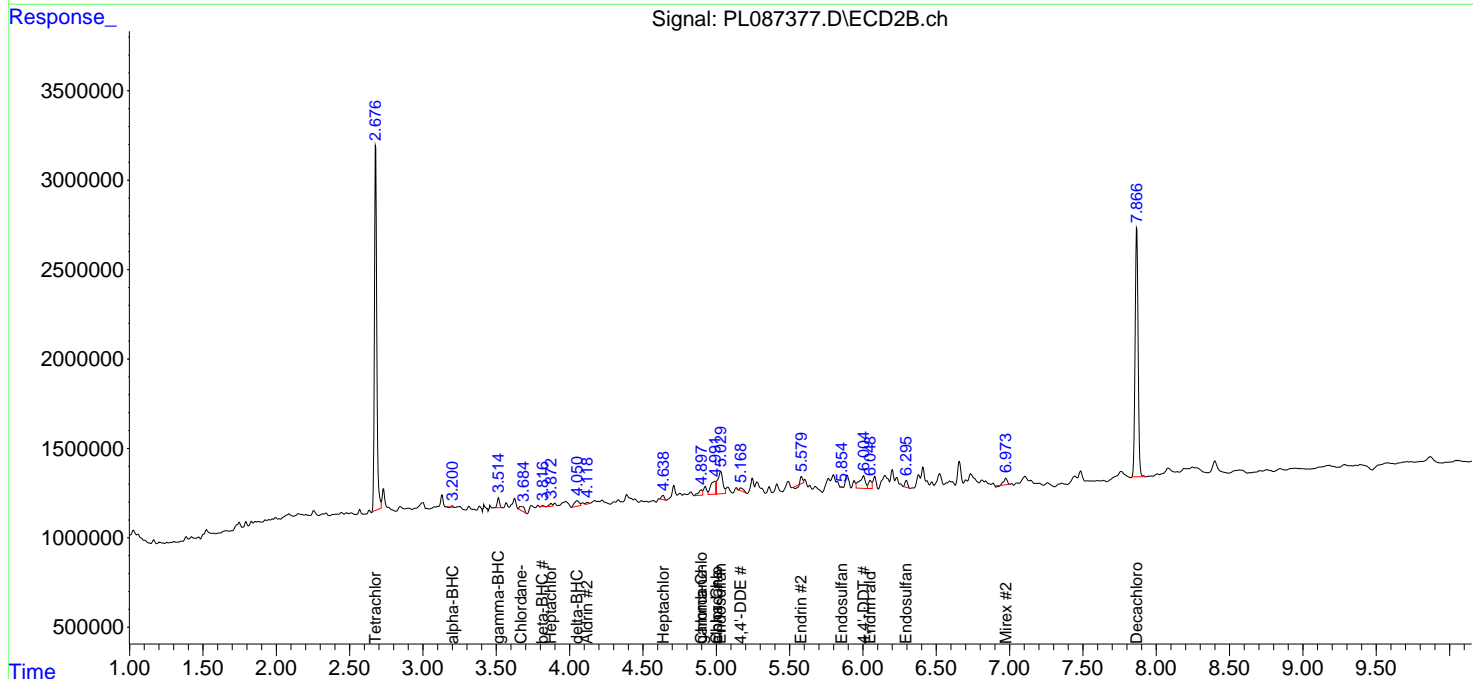
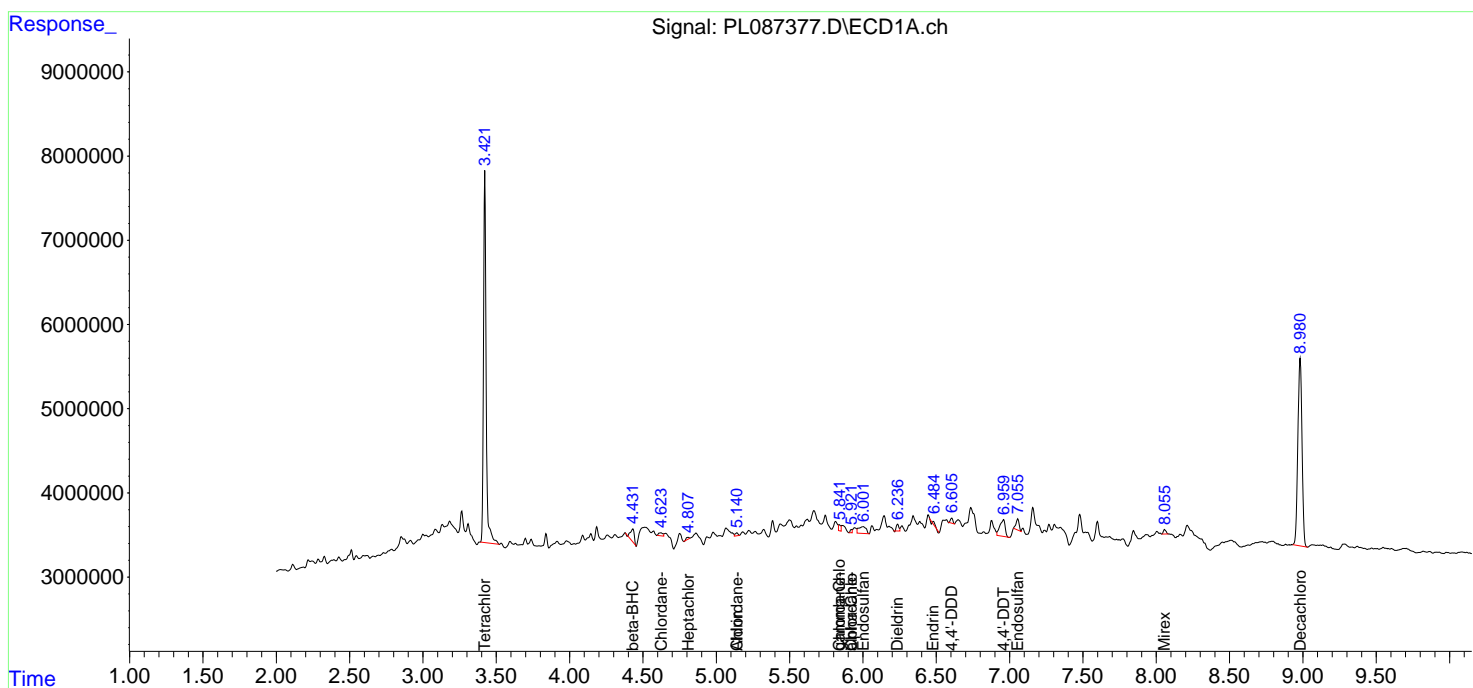
(f)=RT Delta > 1/2 Window (#)=Amounts differ by > 25% (m)=manual int.

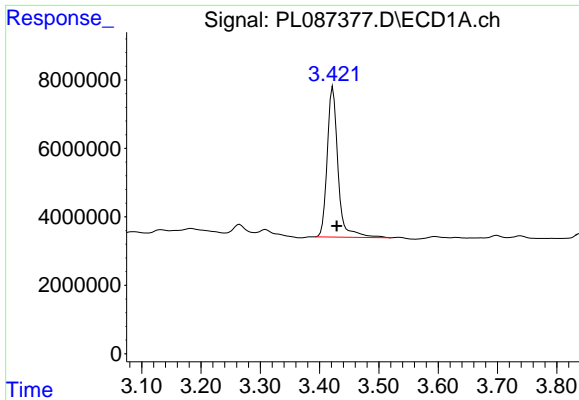
Data Path : Z:\pestpcbsrv\HPCHEM1\ECD_L\Data\PL122223\
 Data File : PL087377.D
 Signal(s) : Signal #1: ECD1A.ch Signal #2: ECD2B.ch
 Acq On : 22 Dec 2023 17:59
 Operator : AR\AJ
 Sample : 05899-02
 Misc :
 ALS Vial : 12 Sample Multiplier: 1

Instrument :
 ECD_L
 ClientSampleId :

Integration File signal 1: autoint1.e
 Integration File signal 2: autoint2.e
 Quant Time: Dec 22 20:02:46 2023
 Quant Method : Z:\pestpcbsrv\HPCHEM1\ECD_L\methods\PL121523.M
 Quant Title : GC Extractables
 QLast Update : Sat Dec 16 04:03:23 2023
 Response via : Initial Calibration
 Integrator: ChemStation

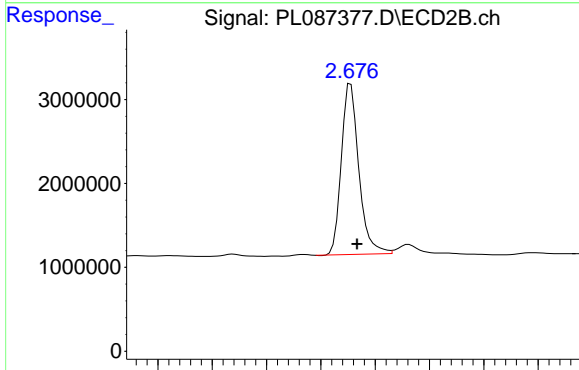
Volume Inj. : 1 µl
 Signal #1 Phase : ZB-MR2 Signal #2 Phase: ZB-MR1
 Signal #1 Info : 30M x 0.32mm x0.2 Signal #2 Info : 30M x 0.32mm x0.5µm



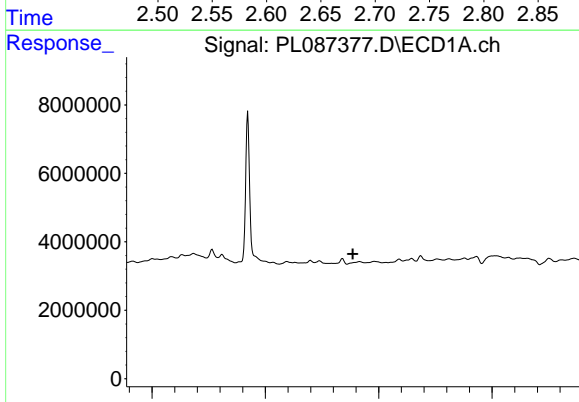


#1 Tetrachloro-m-xylene
 R.T.: 3.423 min
 Delta R.T.: -0.006 min
 Response: 55535344
 Conc: 14.76 ng/ml

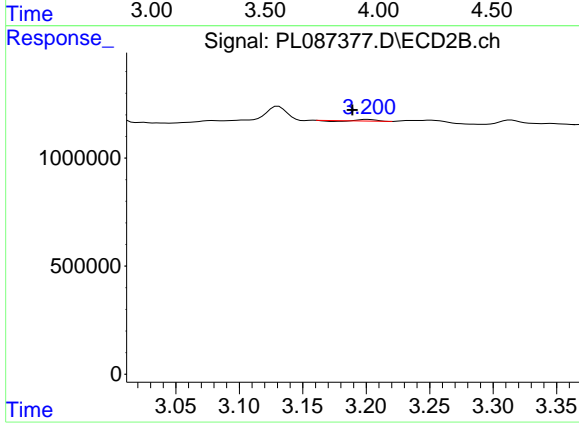
Instrument :
 ECD_L
 ClientSampleId :



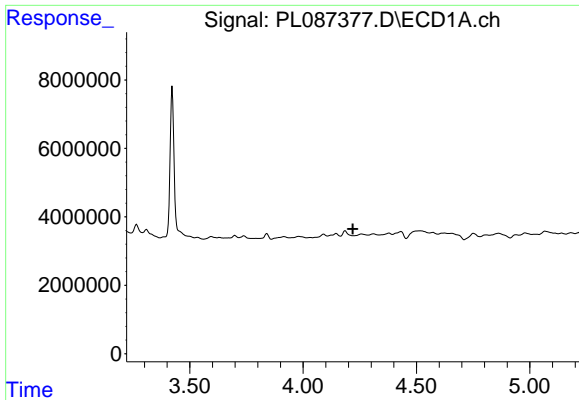
#1 Tetrachloro-m-xylene
 R.T.: 2.677 min
 Delta R.T.: -0.006 min
 Response: 22821687
 Conc: 13.56 ng/ml



#2 alpha-BHC
 R.T.: 0.000 min
 Exp R.T. : 3.885 min
 Response: 0
 Conc: N.D.



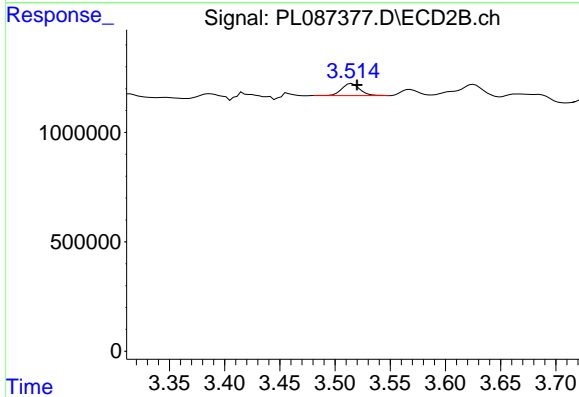
#2 alpha-BHC
 R.T.: 3.202 min
 Delta R.T.: 0.013 min
 Response: 35086
 Conc: 0.01 ng/ml



#3 gamma-BHC (Lindane)

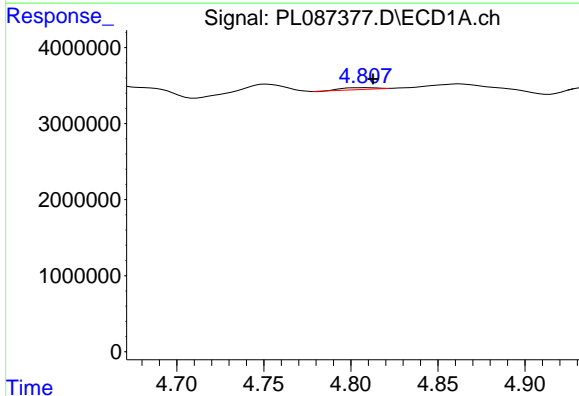
R.T.: 0.000 min
 Exp R.T.: 4.220 min
 Response: 0
 Conc: N.D.

Instrument :
 ECD_L
 ClientSampleId :



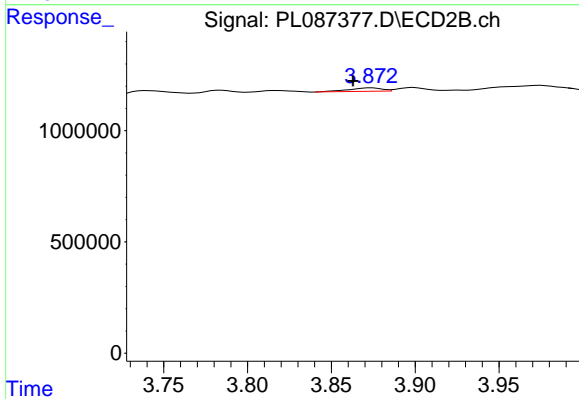
#3 gamma-BHC (Lindane)

R.T.: 3.515 min
 Delta R.T.: -0.005 min
 Response: 628327
 Conc: 0.26 ng/ml



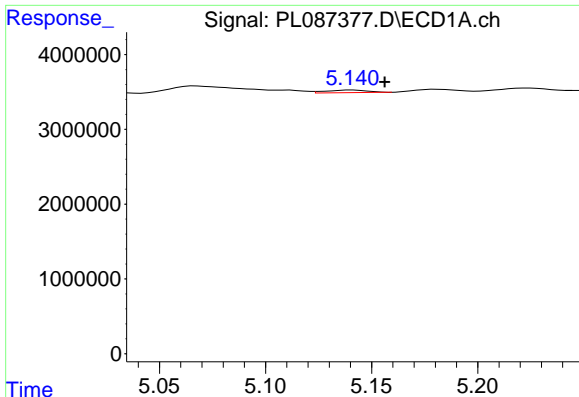
#4 Heptachlor

R.T.: 4.808 min
 Delta R.T.: -0.005 min
 Response: 309656
 Conc: 0.06 ng/ml



#4 Heptachlor

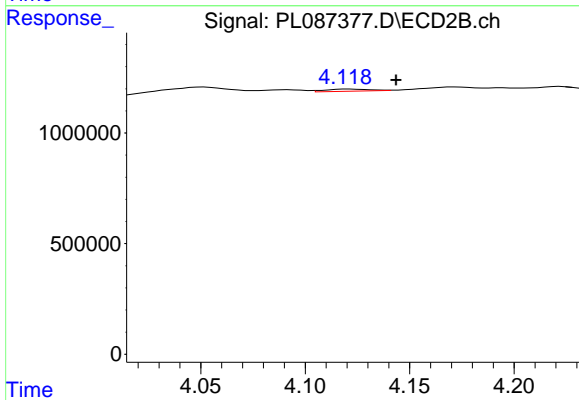
R.T.: 3.874 min
 Delta R.T.: 0.011 min
 Response: 218062
 Conc: 0.09 ng/ml



#5 Aldrin

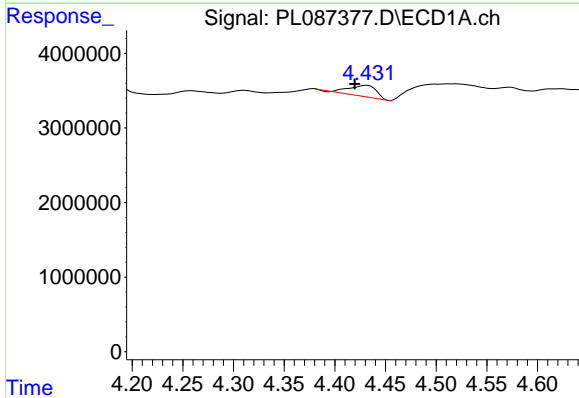
R.T.: 5.141 min
 Delta R.T.: -0.015 min
 Response: 477528
 Conc: 0.09 ng/ml

Instrument :
 ECD_L
 ClientSampleId :



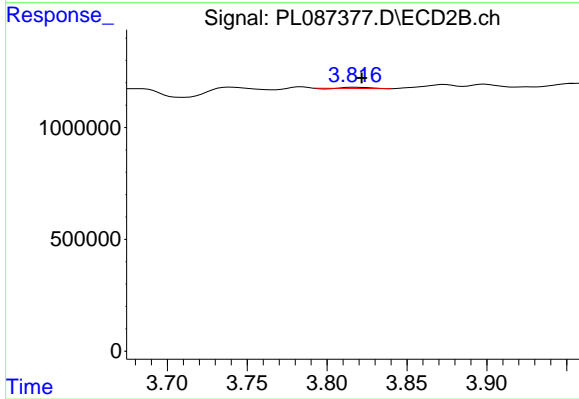
#5 Aldrin

R.T.: 4.121 min
 Delta R.T.: -0.023 min
 Response: 141858
 Conc: 0.06 ng/ml



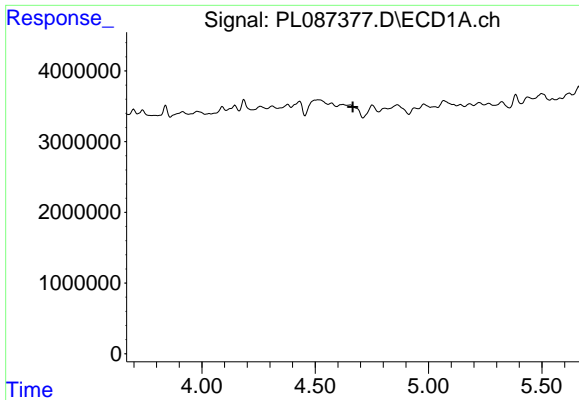
#6 beta-BHC

R.T.: 4.432 min
 Delta R.T.: 0.013 min
 Response: 2839781
 Conc: 1.24 ng/ml



#6 beta-BHC

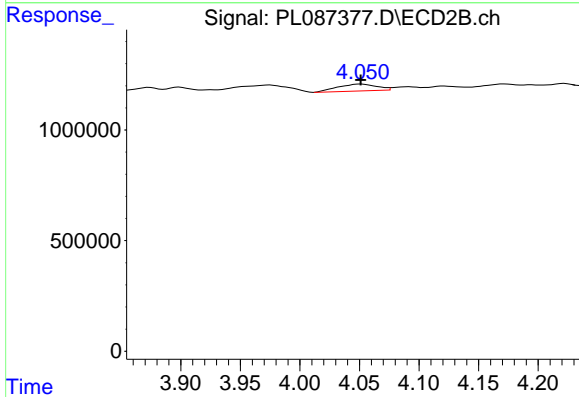
R.T.: 3.818 min
 Delta R.T.: -0.004 min
 Response: 42926
 Conc: 0.04 ng/ml



#7 delta-BHC

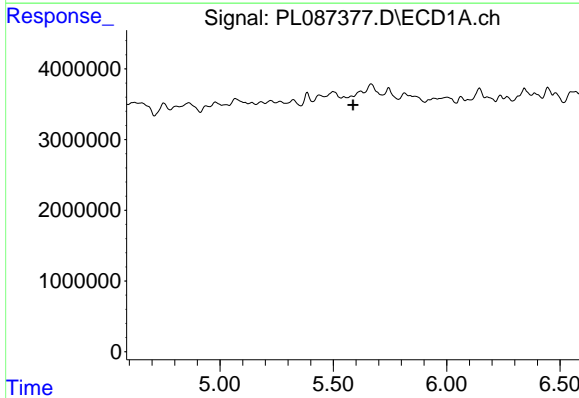
R.T.: 0.000 min
 Exp R.T.: 4.666 min
 Response: 0
 Conc: N.D.

Instrument :
 ECD_L
 ClientSampleId :



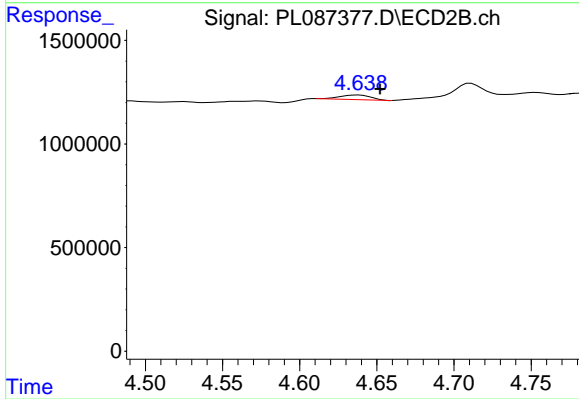
#7 delta-BHC

R.T.: 4.052 min
 Delta R.T.: 0.000 min
 Response: 702918
 Conc: 0.29 ng/ml



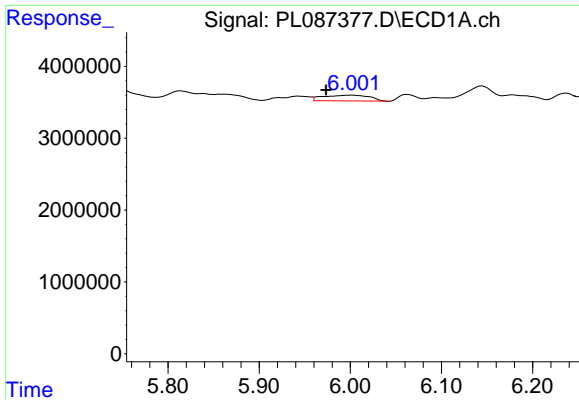
#8 Heptachlor epoxide

R.T.: 0.000 min
 Exp R.T.: 5.587 min
 Response: 0
 Conc: N.D.



#8 Heptachlor epoxide

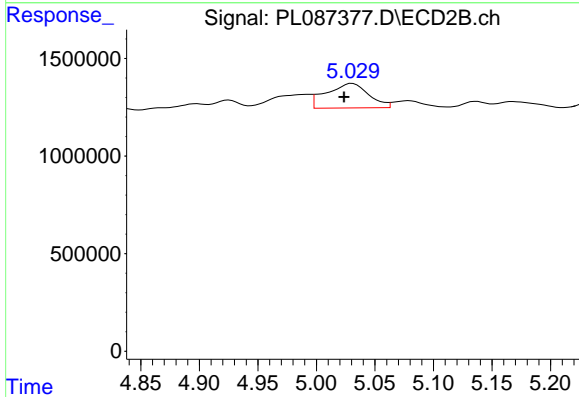
R.T.: 4.638 min
 Delta R.T.: -0.014 min
 Response: 313042
 Conc: 0.14 ng/ml



#9 Endosulfan I

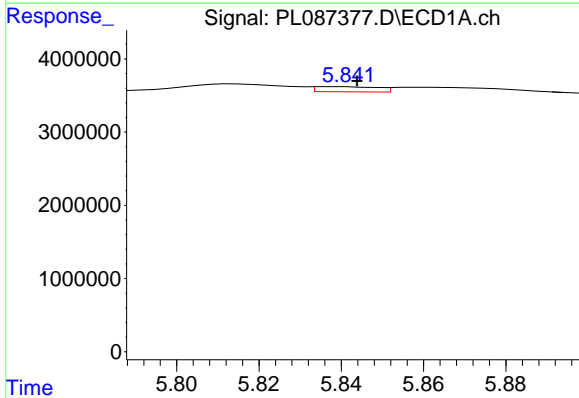
R.T.: 6.002 min
 Delta R.T.: 0.029 min
 Response: 2854170
 Conc: 0.64 ng/ml

Instrument :
 ECD_L
 ClientSampleId :



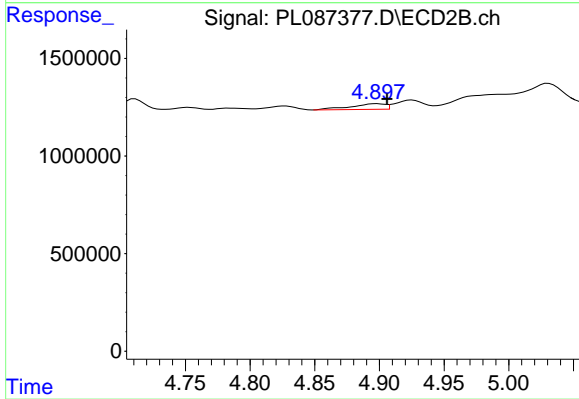
#9 Endosulfan I

R.T.: 5.031 min
 Delta R.T.: 0.007 min
 Response: 3148549
 Conc: 1.46 ng/ml



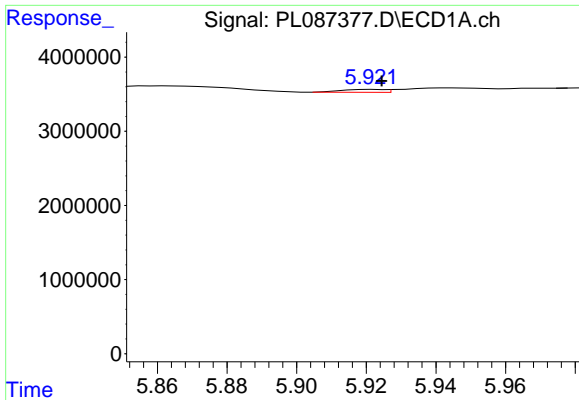
#10 gamma-Chlordane

R.T.: 5.839 min
 Delta R.T.: -0.004 min
 Response: 748102
 Conc: 0.15 ng/ml



#10 gamma-Chlordane

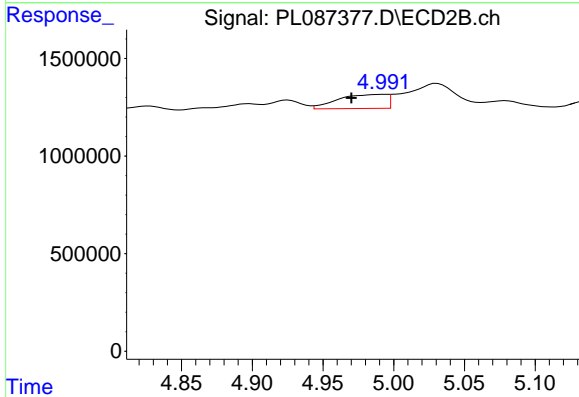
R.T.: 4.898 min
 Delta R.T.: -0.007 min
 Response: 537776
 Conc: 0.24 ng/ml



#11 alpha-Chlordane

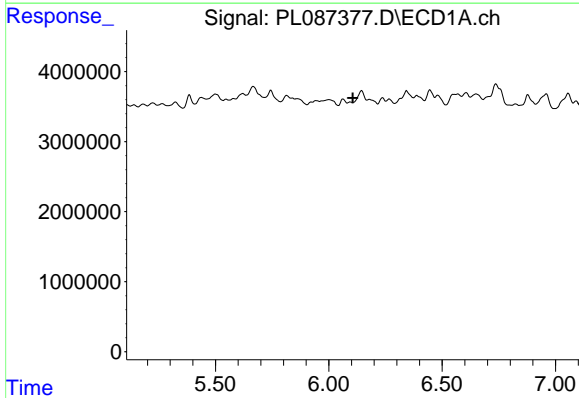
R.T.: 5.922 min
 Delta R.T.: -0.002 min
 Response: 332559
 Conc: 0.07 ng/ml

Instrument :
 ECD_L
 ClientSampleId :



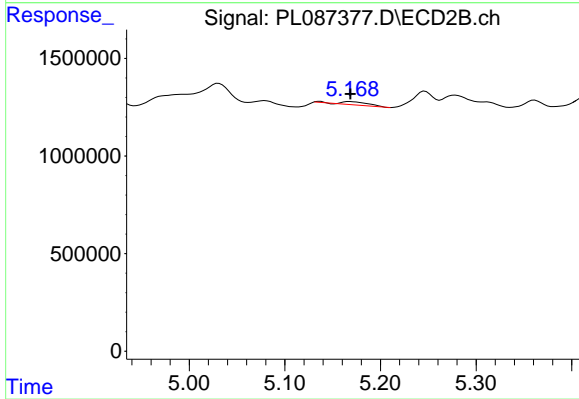
#11 alpha-Chlordane

R.T.: 4.993 min
 Delta R.T.: 0.023 min
 Response: 1719688
 Conc: 0.75 ng/ml



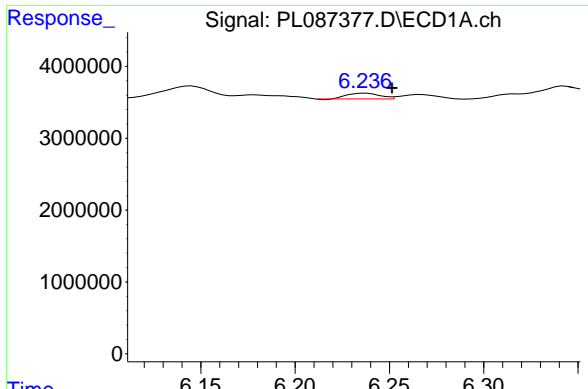
#12 4,4'-DDE

R.T.: 0.000 min
 Exp R.T. : 6.106 min
 Response: 0
 Conc: N.D.



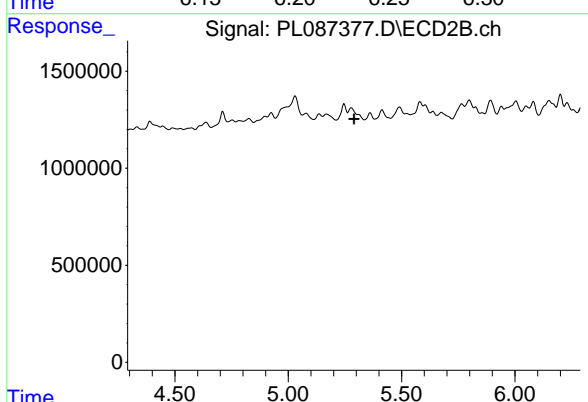
#12 4,4'-DDE

R.T.: 5.168 min
 Delta R.T.: 0.000 min
 Response: 275703
 Conc: 0.14 ng/ml

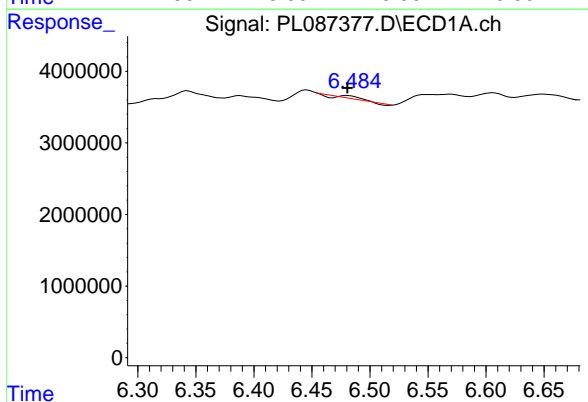


#13 Dieldrin
 R.T.: 6.237 min
 Delta R.T.: -0.014 min
 Response: 937514
 Conc: 0.20 ng/ml

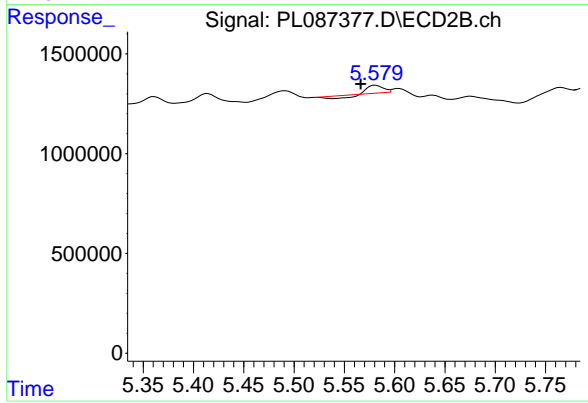
Instrument :
 ECD_L
 ClientSampleId :



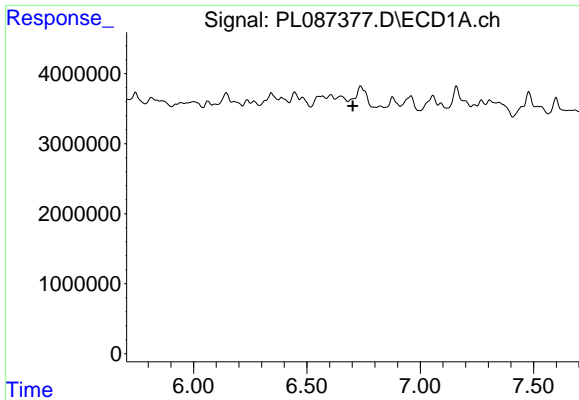
#13 Dieldrin
 R.T.: 5.278 min
 Delta R.T.: -0.013 min
 Response: -134411
 Conc: N.D.



#14 Endrin
 R.T.: 6.480 min
 Delta R.T.: 0.000 min
 Response: 19843
 Conc: 0.01 ng/ml



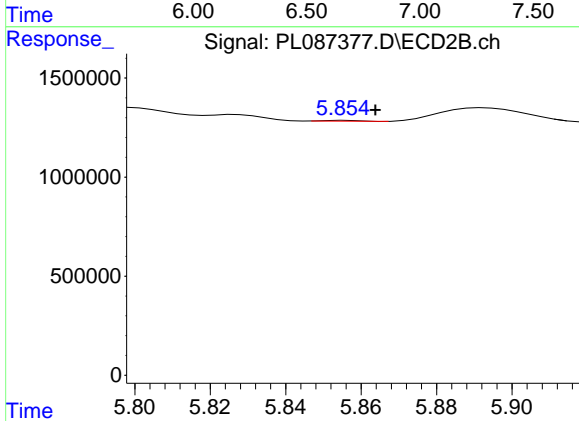
#14 Endrin
 R.T.: 5.581 min
 Delta R.T.: 0.015 min
 Response: 197607
 Conc: 0.10 ng/ml



#15 Endosulfan II

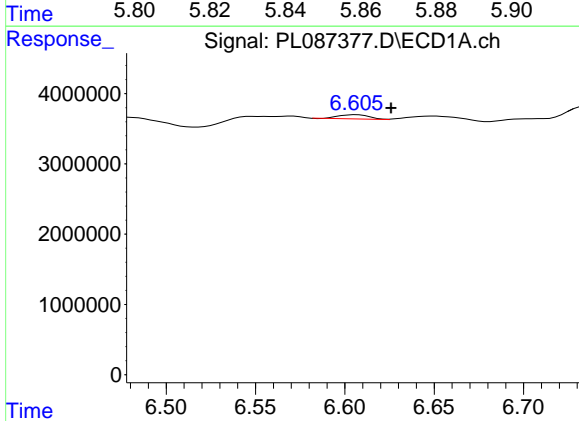
R.T.: 0.000 min
 Exp R.T.: 6.702 min
 Response: 0
 Conc: N.D.

Instrument :
 ECD_L
 ClientSampleId :



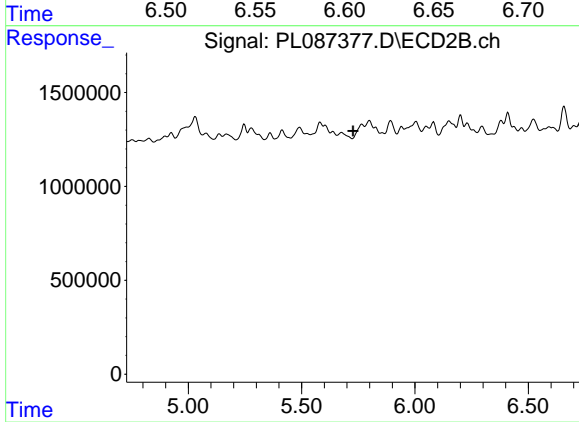
#15 Endosulfan II

R.T.: 5.856 min
 Delta R.T.: -0.008 min
 Response: 25708
 Conc: 0.01 ng/ml



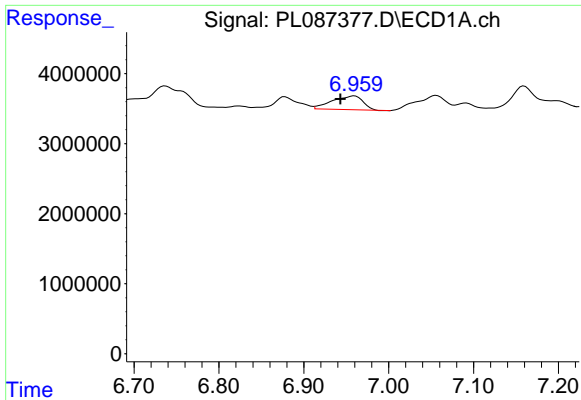
#16 4,4'-DDD

R.T.: 6.606 min
 Delta R.T.: -0.019 min
 Response: 717033
 Conc: 0.22 ng/ml



#16 4,4'-DDD

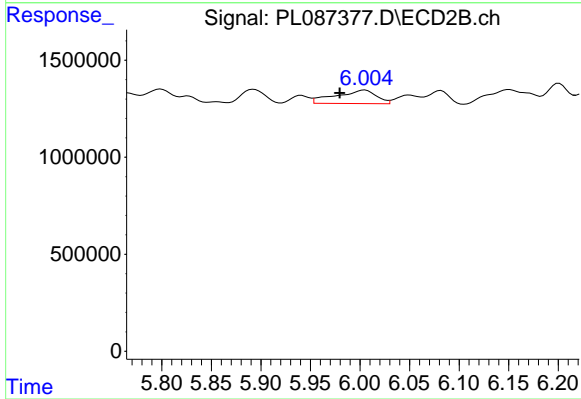
R.T.: 0.000 min
 Exp R.T.: 5.727 min
 Response: 0
 Conc: N.D.



#17 4,4'-DDT

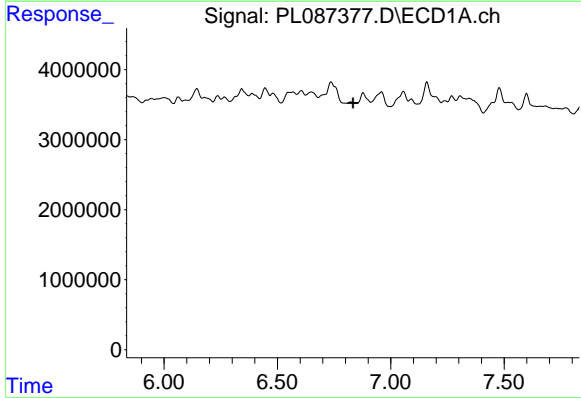
R.T.: 6.960 min
 Delta R.T.: 0.016 min
 Response: 4979707
 Conc: 1.32 ng/ml

Instrument :
 ECD_L
 ClientSampleId :



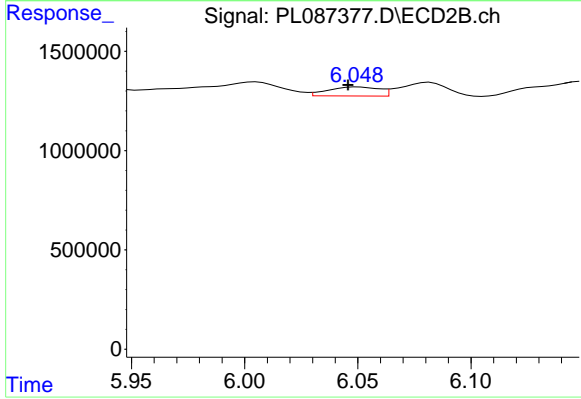
#17 4,4'-DDT

R.T.: 6.005 min
 Delta R.T.: 0.025 min
 Response: 1979434
 Conc: 1.07 ng/ml



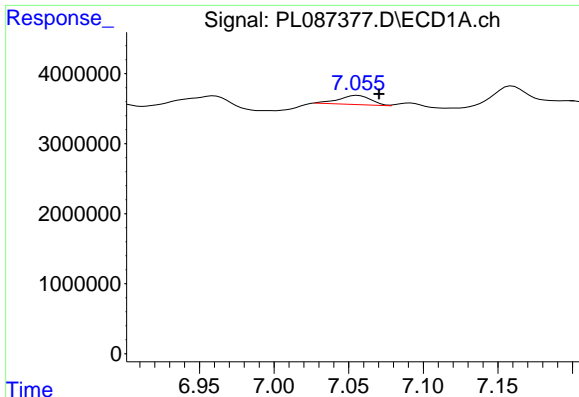
#18 Endrin aldehyde

R.T.: 0.000 min
 Exp R.T. : 6.833 min
 Response: 0
 Conc: N.D.



#18 Endrin aldehyde

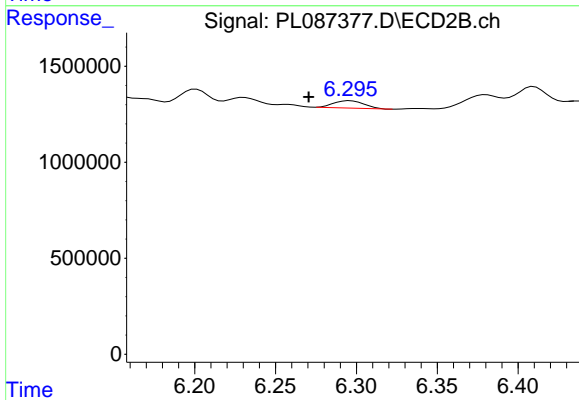
R.T.: 6.050 min
 Delta R.T.: 0.004 min
 Response: 716277
 Conc: 0.49 ng/ml



#19 Endosulfan Sulfate

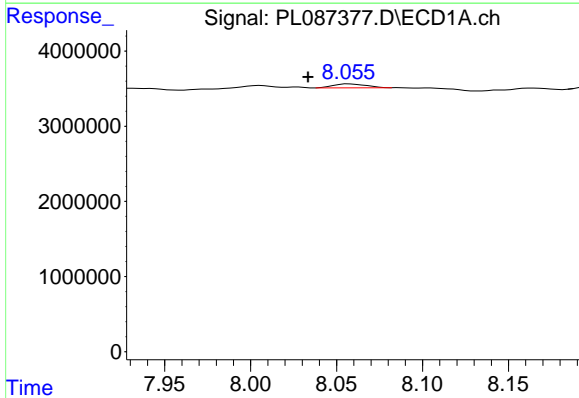
R.T.: 7.056 min
 Delta R.T.: -0.014 min
 Response: 1961465
 Conc: 0.50 ng/ml

Instrument :
 ECD_L
 ClientSampleId :



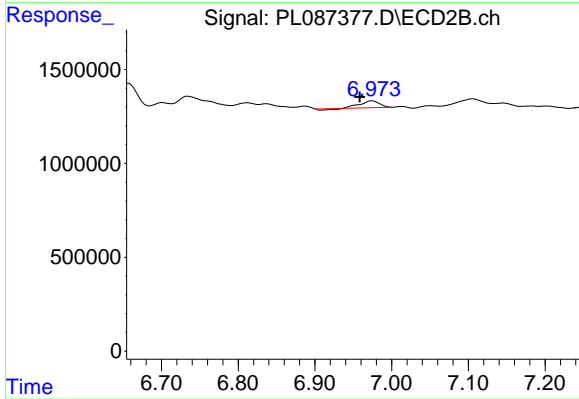
#19 Endosulfan Sulfate

R.T.: 6.296 min
 Delta R.T.: 0.026 min
 Response: 457558
 Conc: 0.24 ng/ml



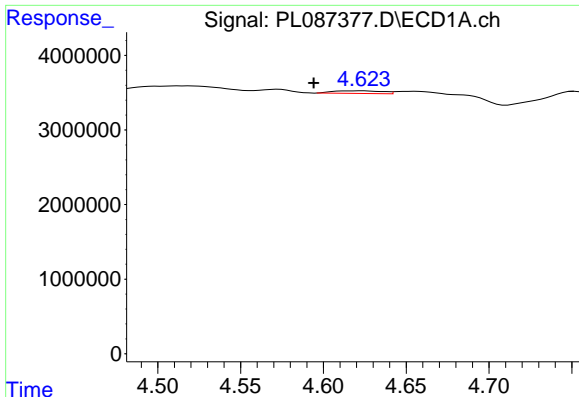
#22 Mirex

R.T.: 8.057 min
 Delta R.T.: 0.024 min
 Response: 684647
 Conc: 0.20 ng/ml



#22 Mirex

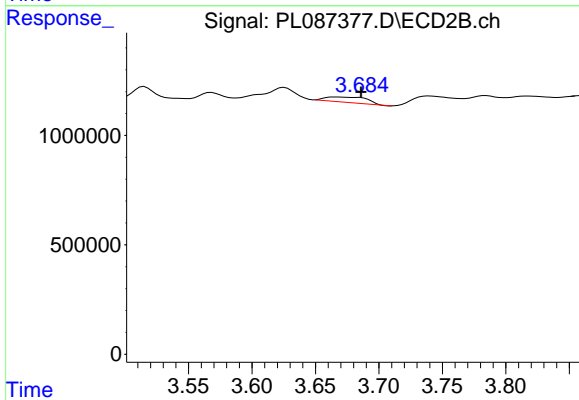
R.T.: 6.975 min
 Delta R.T.: 0.016 min
 Response: 574045
 Conc: 0.32 ng/ml



#23 Chlordane-1

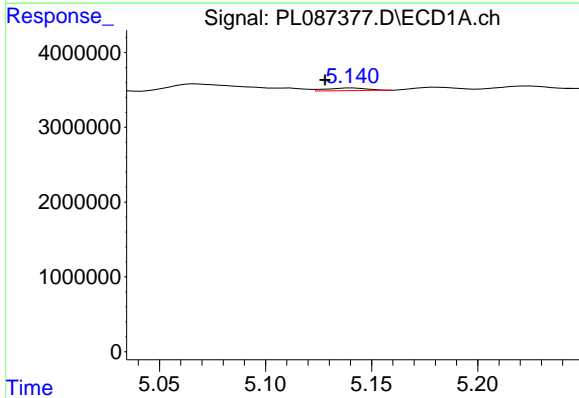
R.T.: 4.624 min
 Delta R.T.: 0.030 min
 Response: 705415
 Conc: 4.47 ng/ml

Instrument :
 ECD_L
 ClientSampleId :



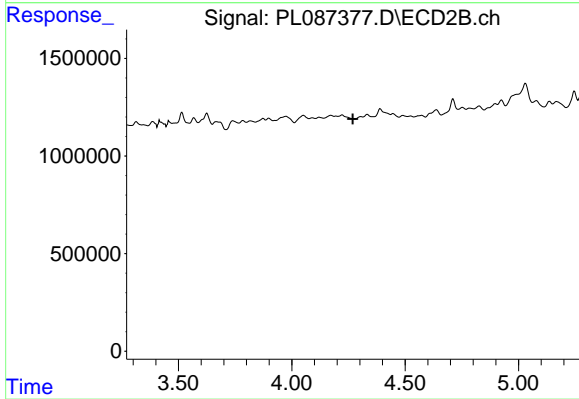
#23 Chlordane-1

R.T.: 3.666 min
 Delta R.T.: -0.020 min
 Response: 554321
 Conc: 8.94 ng/ml



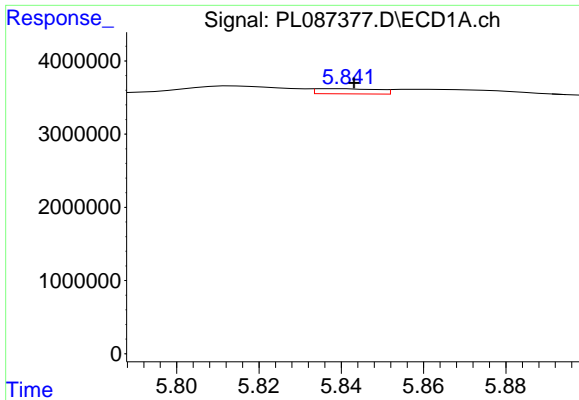
#24 Chlordane-2

R.T.: 5.141 min
 Delta R.T.: 0.013 min
 Response: 477528
 Conc: 2.74 ng/ml



#24 Chlordane-2

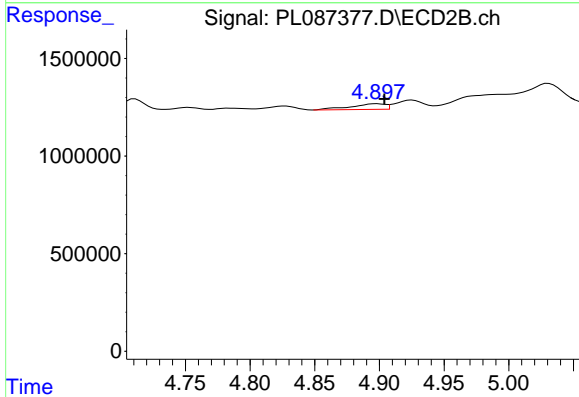
R.T.: 0.000 min
 Exp R.T. : 4.269 min
 Response: 0
 Conc: N.D.



#25 Chlordane-3

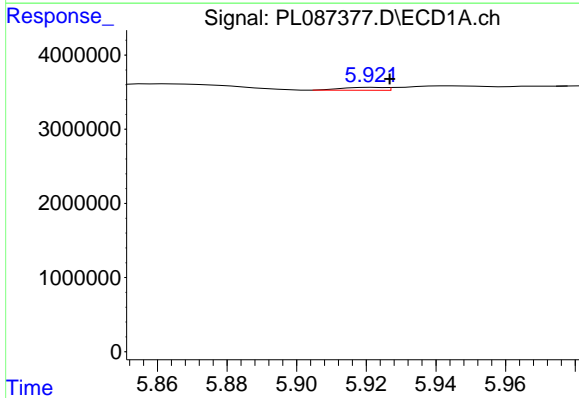
R.T.: 5.839 min
 Delta R.T.: -0.004 min
 Response: 748102
 Conc: 1.07 ng/ml

Instrument :
 ECD_L
 ClientSampleId :



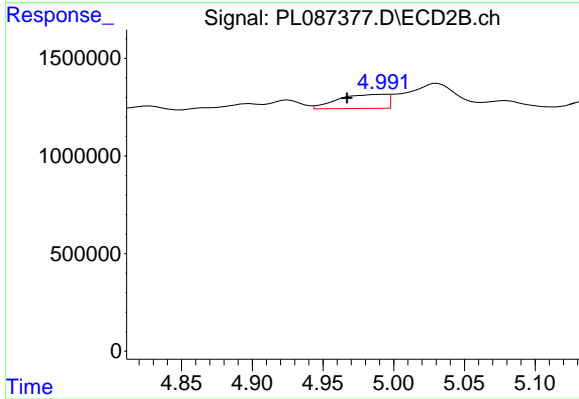
#25 Chlordane-3

R.T.: 4.898 min
 Delta R.T.: -0.005 min
 Response: 537776
 Conc: 2.43 ng/ml



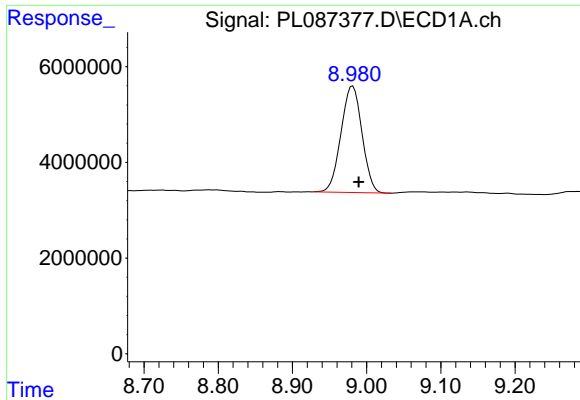
#26 Chlordane-4

R.T.: 5.922 min
 Delta R.T.: -0.005 min
 Response: 332559
 Conc: 0.39 ng/ml



#26 Chlordane-4

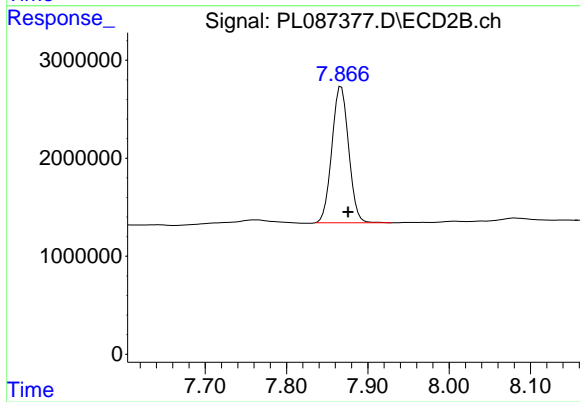
R.T.: 4.993 min
 Delta R.T.: 0.026 min
 Response: 1719688
 Conc: 7.39 ng/ml



#28 Decachlorobiphenyl

R.T.: 8.981 min
Delta R.T.: -0.008 min
Response: 43793105
Conc: 12.84 ng/ml

Instrument :
ECD_L
ClientSampleId :



#28 Decachlorobiphenyl

R.T.: 7.867 min
Delta R.T.: -0.008 min
Response: 19986586
Conc: 11.83 ng/ml