

Data Path : Z:\pestpcbsrv\HPCHEM1\ECD\_L\Data\PL122223\  
 Data File : PL087380.D  
 Signal(s) : Signal #1: ECD1A.ch Signal #2: ECD2B.ch  
 Acq On : 22 Dec 2023 18:58  
 Operator : AR\AJ  
 Sample : 05899-05  
 Misc :  
 ALS Vial : 15 Sample Multiplier: 1

Instrument :  
 ECD\_L  
 ClientSampleId :  
 GHL-SS-11

Integration File signal 1: autoint1.e  
 Integration File signal 2: autoint2.e  
 Quant Time: Dec 22 20:03:31 2023  
 Quant Method : Z:\pestpcbsrv\HPCHEM1\ECD\_L\methods\PL121523.M  
 Quant Title : GC Extractables  
 QLast Update : Sat Dec 16 04:03:23 2023  
 Response via : Initial Calibration  
 Integrator: ChemStation

Volume Inj. : 1 µl  
 Signal #1 Phase : ZB-MR2 Signal #2 Phase: ZB-MR1  
 Signal #1 Info : 30M x 0.32mm x0.2 Signal #2 Info : 30M x 0.32mm x0.5µm

Compound	RT#1	RT#2	Resp#1	Resp#2	ng/ml	ng/ml
-----						
System Monitoring Compounds						
1) SA Tetrachlo...	3.424	2.679	49223535	21227416	13.079	12.611
2) SA Decachlor...	8.982	7.868	38014899	17348884	11.148	10.272
Target Compounds						
3) MA gamma-BHC...	0.000	3.516	0	159030	N.D.	0.066 #
4) MA Heptachlor	0.000	3.867	0	28975	N.D.	0.012 #
5) MB Aldrin	0.000	4.152	0	70007	N.D.	0.029 #
6) B beta-BHC	4.436f	3.832	1265995	-11611	0.551	N.D. #
7) B delta-BHC	0.000	4.053	0	168142	N.D.	0.069 #
8) B Heptachlo...	5.614f	4.663	2482563	123663	0.527	0.056 #
9) A Endosulfan I	0.000	5.029	0	2780628	N.D.	1.287 #
10) B gamma-Chl...	5.818f	0.000	944280	0	0.195	N.D. #
11) B alpha-Chl...	0.000	4.975	0	2979903	N.D.	1.291 #
13) MA Dieldrin	6.273f	5.278	725623	297405	0.156	0.133
14) MA Endrin	0.000	5.579	0	295648	N.D.	0.148 #
15) B Endosulfa...	0.000	5.893f	0	574403	N.D.	0.295 #
16) A 4,4'-DDD	6.608f	0.000	95219	0	0.029	N.D. #
17) MA 4,4'-DDT	6.964f	5.965	3352751	451356	0.892	0.245 #
18) B Endrin al...	0.000	6.050	0	445051	N.D.	0.303 #
19) B Endosulfa...	7.060	6.299f	1117236	184575	0.285	0.098 #
22) Mirex	8.060f	6.978f	476209	439282	0.141	0.247 #
23) Chlordane-1	0.000	3.696	0	380837	N.D.	6.139 #
25) Chlordane-3	5.818f	0.000	944280	0	1.355	N.D. #
26) Chlordane-4	0.000	4.963	0	3998720	N.D.	17.175 #
27) Chlordane-5	0.000	5.638	0	17475	N.D.	0.270 #

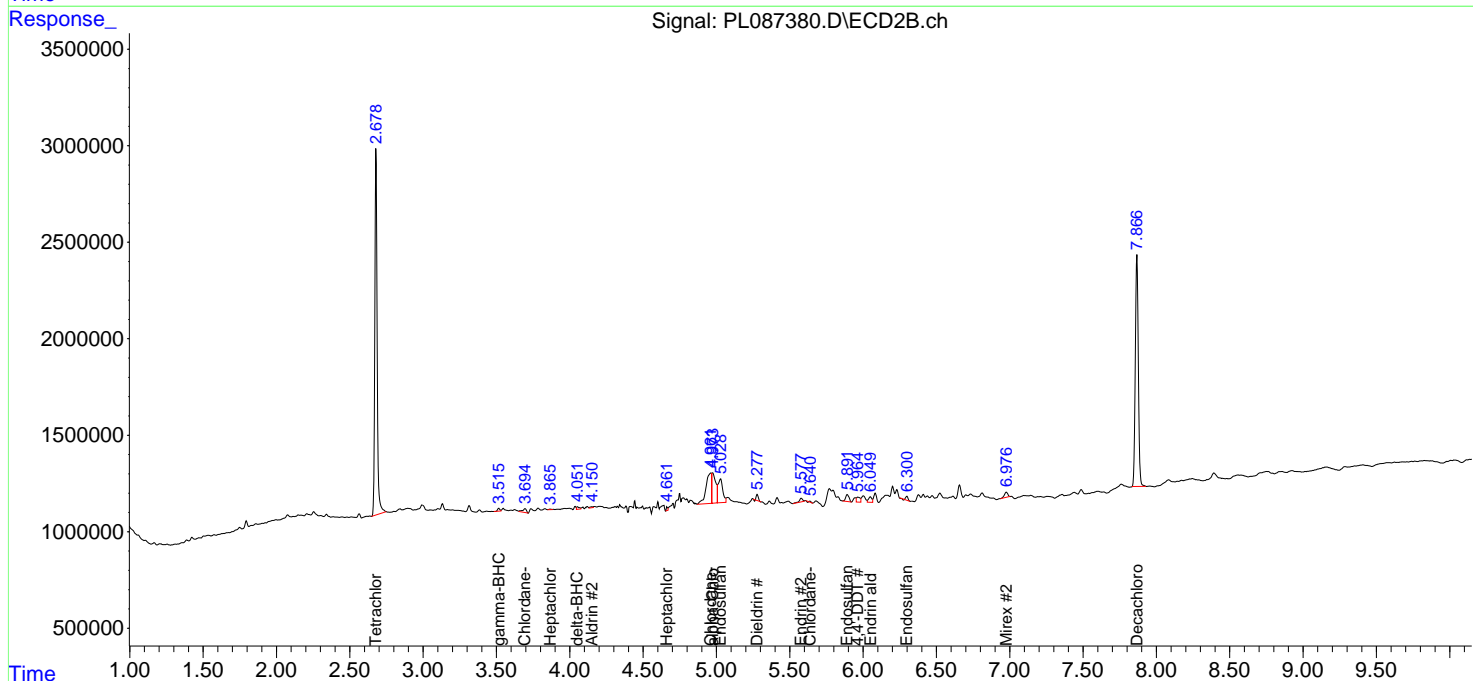
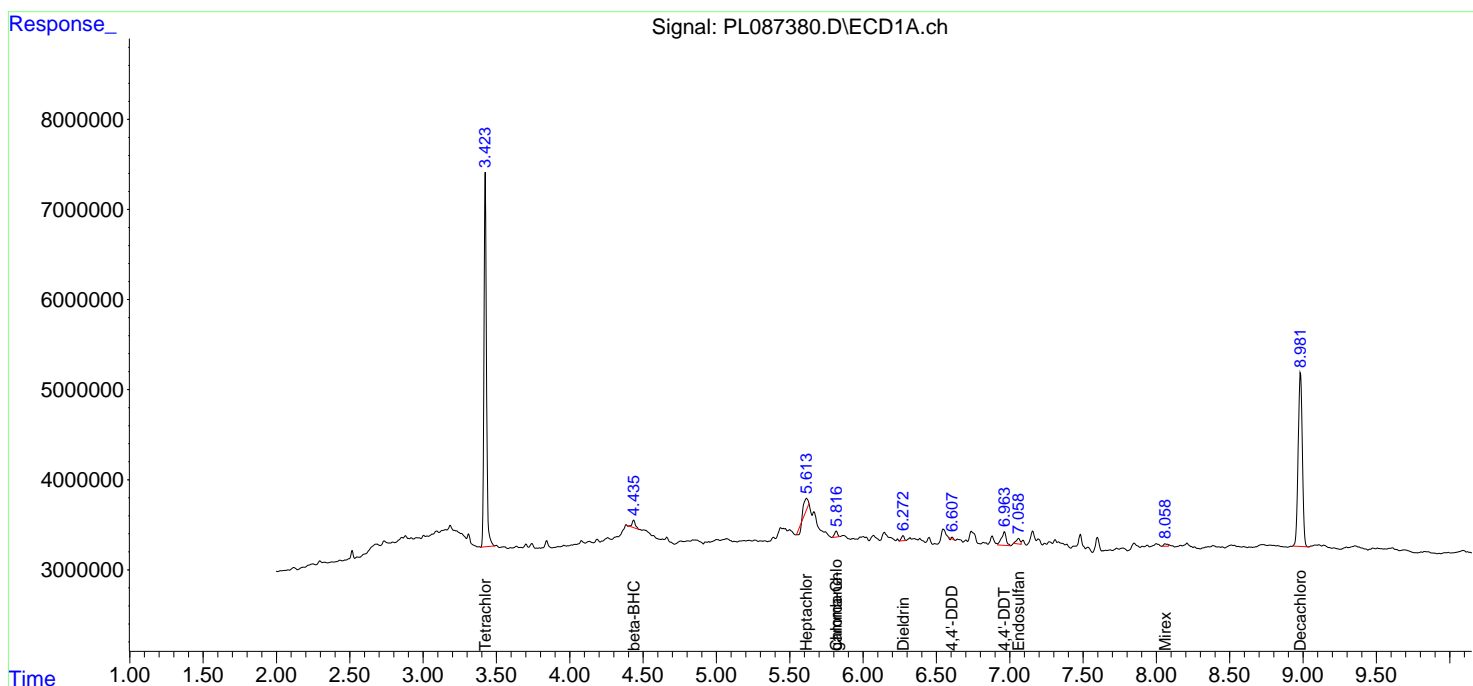
(f)=RT Delta > 1/2 Window (#)=Amounts differ by > 25% (m)=manual int.

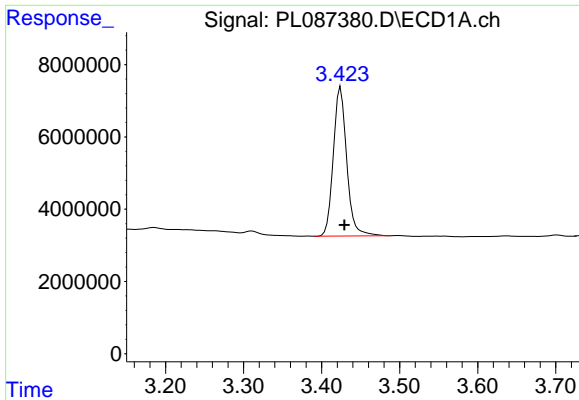
Data Path : Z:\pestpcbsrv\HPCHEM1\ECD\_L\Data\PL122223\  
 Data File : PL087380.D  
 Signal(s) : Signal #1: ECD1A.ch Signal #2: ECD2B.ch  
 Acq On : 22 Dec 2023 18:58  
 Operator : AR\AJ  
 Sample : 05899-05  
 Misc :  
 ALS Vial : 15 Sample Multiplier: 1

Instrument :  
 ECD\_L  
 ClientSampleId :  
 GH-SS-11

Integration File signal 1: autoint1.e  
 Integration File signal 2: autoint2.e  
 Quant Time: Dec 22 20:03:31 2023  
 Quant Method : Z:\pestpcbsrv\HPCHEM1\ECD\_L\methods\PL121523.M  
 Quant Title : GC Extractables  
 QLast Update : Sat Dec 16 04:03:23 2023  
 Response via : Initial Calibration  
 Integrator: ChemStation

Volume Inj. : 1 µl  
 Signal #1 Phase : ZB-MR2 Signal #2 Phase: ZB-MR1  
 Signal #1 Info : 30M x 0.32mm x0.2 Signal #2 Info : 30M x 0.32mm x0.5µm

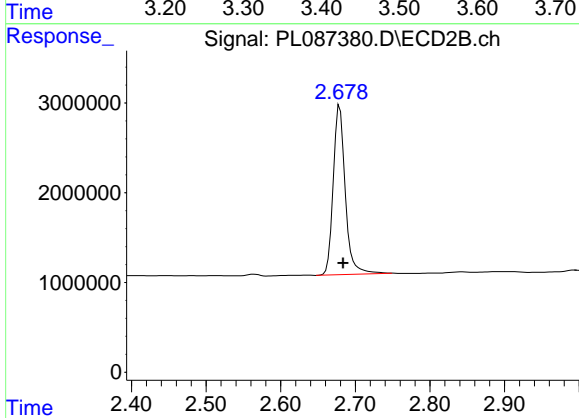




#1 Tetrachloro-m-xylene

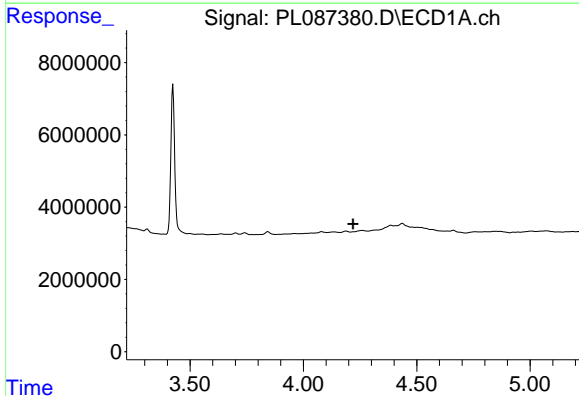
R.T.: 3.424 min  
 Delta R.T.: -0.005 min  
 Response: 49223535  
 Conc: 13.08 ng/ml

Instrument :  
 ECD\_L  
 ClientSampleId :  
 GHL-SS-11



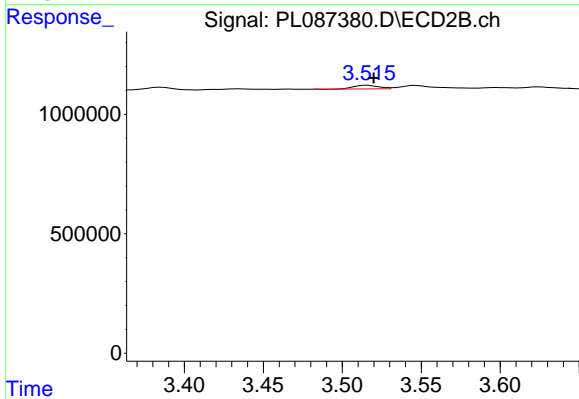
#1 Tetrachloro-m-xylene

R.T.: 2.679 min  
 Delta R.T.: -0.004 min  
 Response: 21227416  
 Conc: 12.61 ng/ml



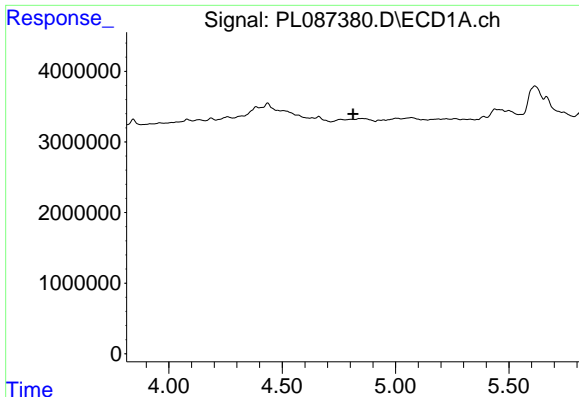
#3 gamma-BHC (Lindane)

R.T.: 0.000 min  
 Exp R.T. : 4.220 min  
 Response: 0  
 Conc: N.D.



#3 gamma-BHC (Lindane)

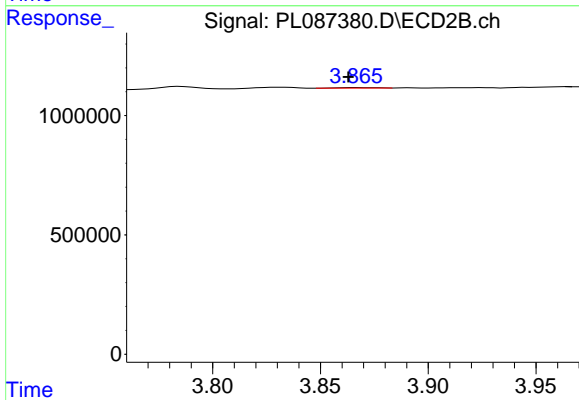
R.T.: 3.516 min  
 Delta R.T.: -0.004 min  
 Response: 159030  
 Conc: 0.07 ng/ml



#4 Heptachlor

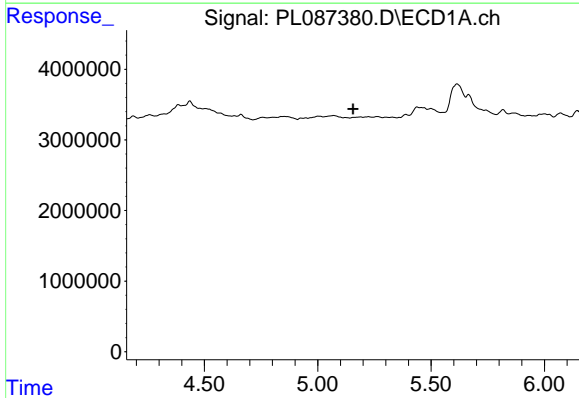
R.T.: 0.000 min  
 Exp R.T.: 4.813 min  
 Response: 0  
 Conc: N.D.

Instrument :  
 ECD\_L  
 ClientSampleId :  
 GHL-SS-11



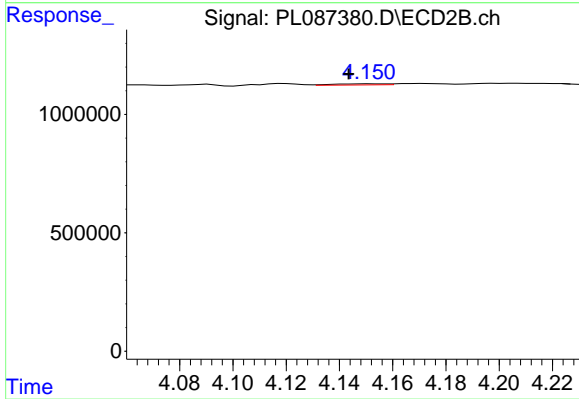
#4 Heptachlor

R.T.: 3.867 min  
 Delta R.T.: 0.004 min  
 Response: 28975  
 Conc: 0.01 ng/ml



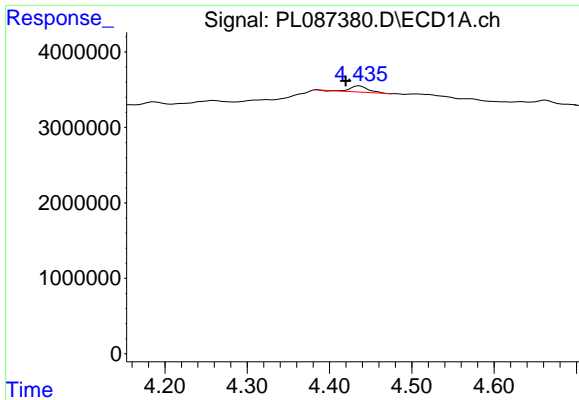
#5 Aldrin

R.T.: 0.000 min  
 Exp R.T.: 5.156 min  
 Response: 0  
 Conc: N.D.



#5 Aldrin

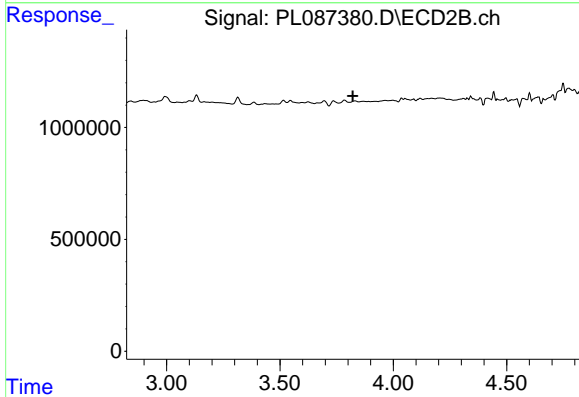
R.T.: 4.152 min  
 Delta R.T.: 0.009 min  
 Response: 70007  
 Conc: 0.03 ng/ml



#6 beta-BHC

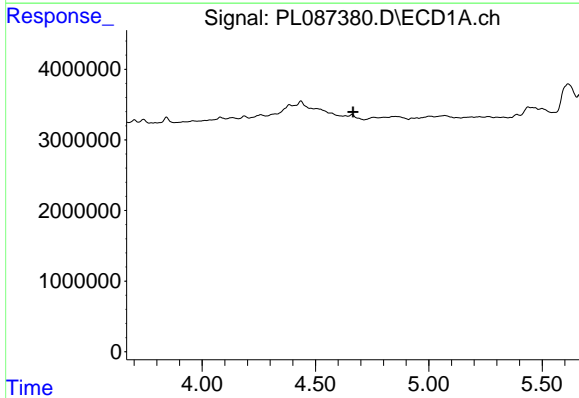
R.T.: 4.436 min  
 Delta R.T.: 0.017 min  
 Response: 1265995  
 Conc: 0.55 ng/ml

Instrument :  
 ECD\_L  
 ClientSampleId :  
 GHL-SS-11



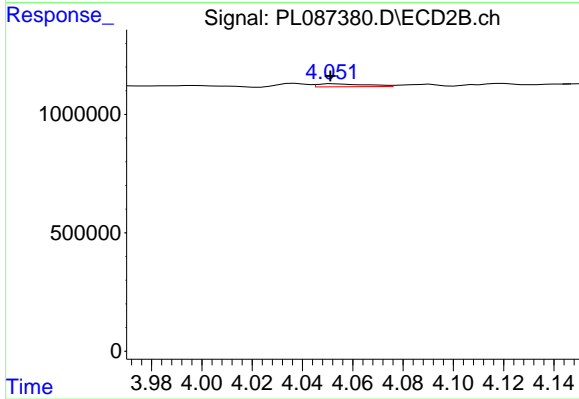
#6 beta-BHC

R.T.: 3.832 min  
 Delta R.T.: 0.010 min  
 Response: -11611  
 Conc: N.D.



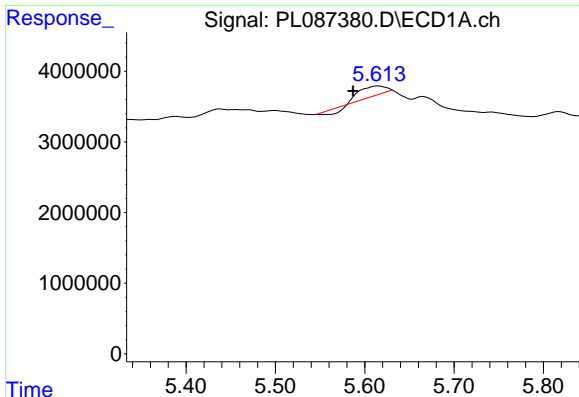
#7 delta-BHC

R.T.: 0.000 min  
 Exp R.T. : 4.666 min  
 Response: 0  
 Conc: N.D.



#7 delta-BHC

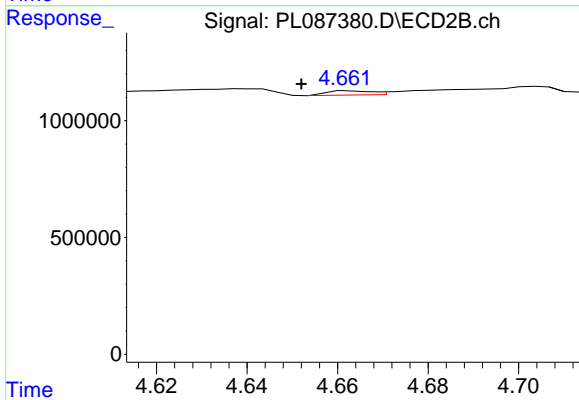
R.T.: 4.053 min  
 Delta R.T.: 0.001 min  
 Response: 168142  
 Conc: 0.07 ng/ml



#8 Heptachlor epoxide

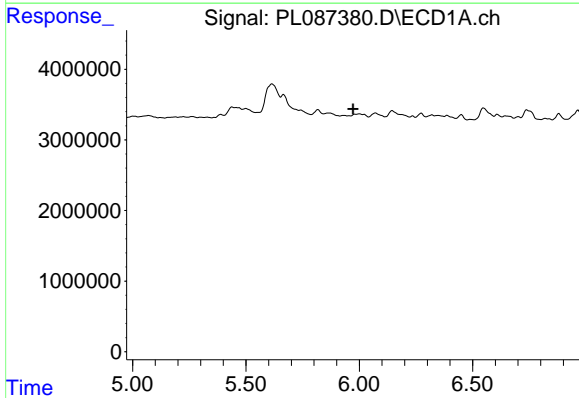
R.T.: 5.614 min  
 Delta R.T.: 0.028 min  
 Response: 2482563  
 Conc: 0.53 ng/ml

Instrument :  
 ECD\_L  
 ClientSampleId :  
 GHL-SS-11



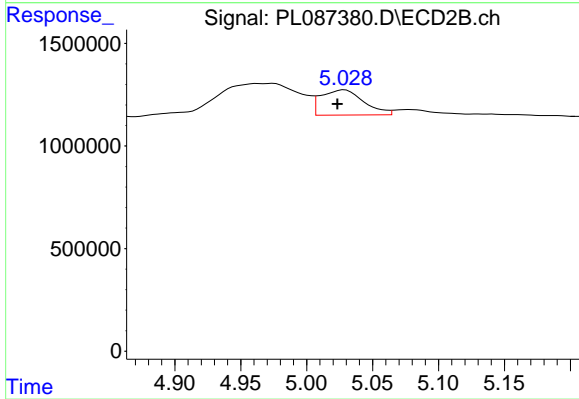
#8 Heptachlor epoxide

R.T.: 4.663 min  
 Delta R.T.: 0.011 min  
 Response: 123663  
 Conc: 0.06 ng/ml



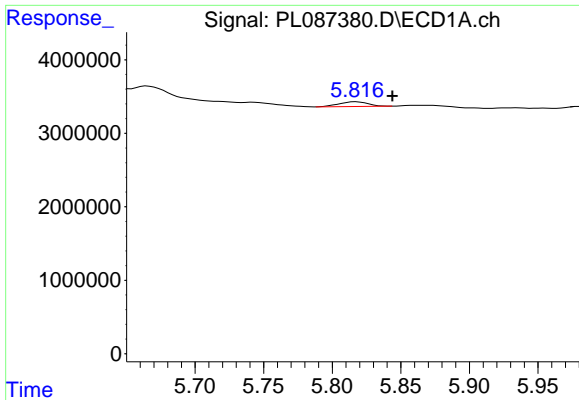
#9 Endosulfan I

R.T.: 0.000 min  
 Exp R.T. : 5.973 min  
 Response: 0  
 Conc: N.D.



#9 Endosulfan I

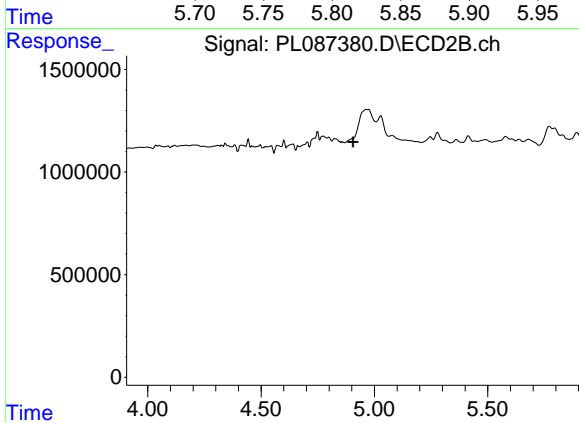
R.T.: 5.029 min  
 Delta R.T.: 0.005 min  
 Response: 2780628  
 Conc: 1.29 ng/ml



#10 gamma-Chlordane

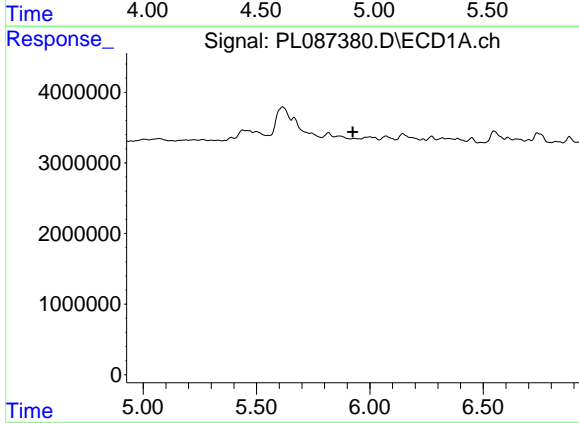
R.T.: 5.818 min  
 Delta R.T.: -0.026 min  
 Response: 944280  
 Conc: 0.19 ng/ml

Instrument :  
 ECD\_L  
 ClientSampleId :  
 GHL-SS-11



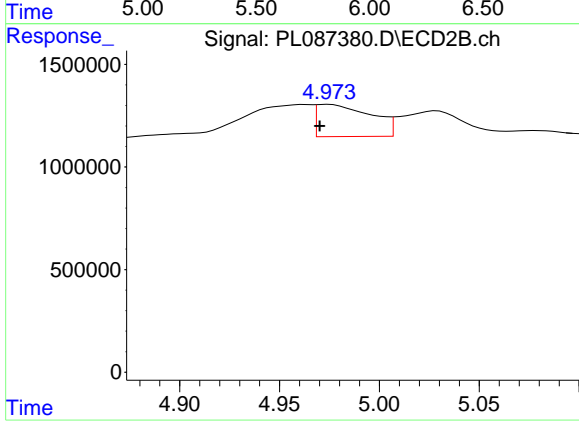
#10 gamma-Chlordane

R.T.: 0.000 min  
 Exp R.T. : 4.906 min  
 Response: 0  
 Conc: N.D.



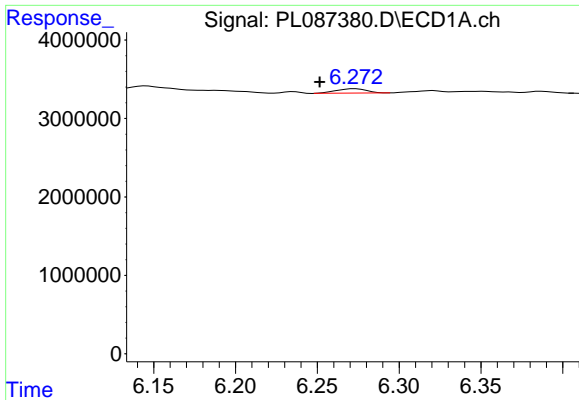
#11 alpha-Chlordane

R.T.: 0.000 min  
 Exp R.T. : 5.924 min  
 Response: 0  
 Conc: N.D.



#11 alpha-Chlordane

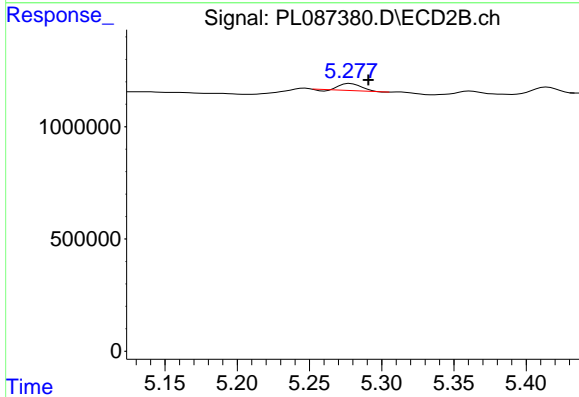
R.T.: 4.975 min  
 Delta R.T.: 0.005 min  
 Response: 2979903  
 Conc: 1.29 ng/ml



#13 Dieldrin

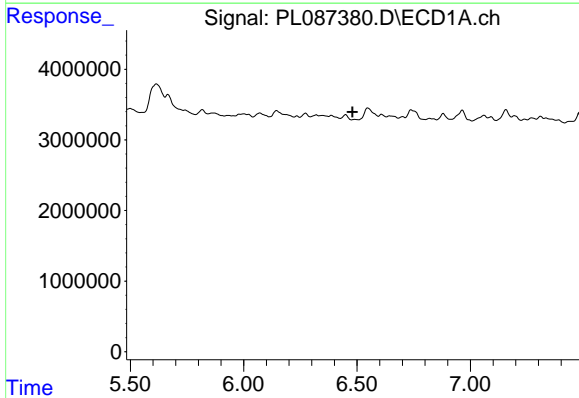
R.T.: 6.273 min  
 Delta R.T.: 0.022 min  
 Response: 725623  
 Conc: 0.16 ng/ml

Instrument :  
 ECD\_L  
 ClientSampleId :  
 GHL-SS-11



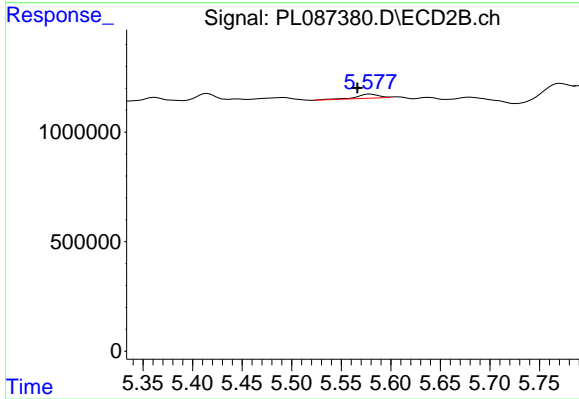
#13 Dieldrin

R.T.: 5.278 min  
 Delta R.T.: -0.013 min  
 Response: 297405  
 Conc: 0.13 ng/ml



#14 Endrin

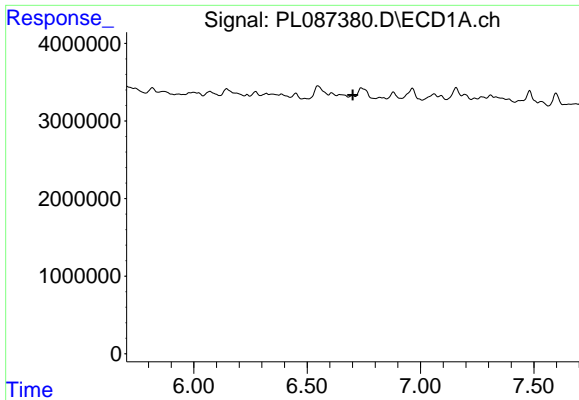
R.T.: 0.000 min  
 Exp R.T. : 6.480 min  
 Response: 0  
 Conc: N.D.



#14 Endrin

R.T.: 5.579 min  
 Delta R.T.: 0.013 min  
 Response: 295648  
 Conc: 0.15 ng/ml

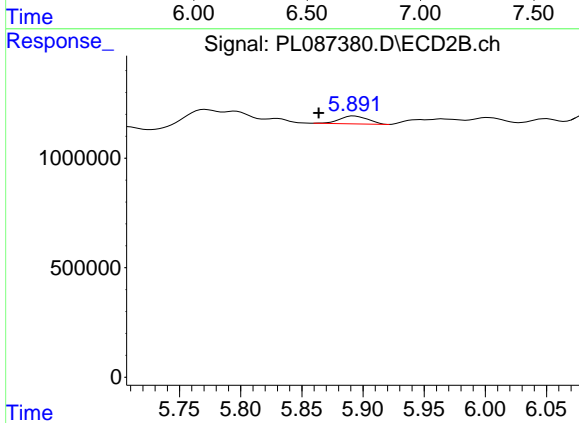




#15 Endosulfan II

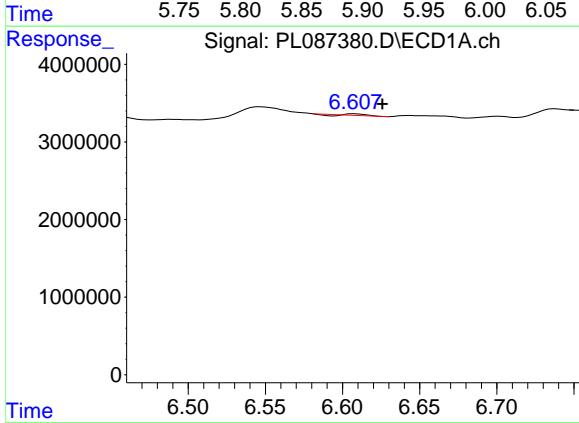
R.T.: 0.000 min  
 Exp R.T.: 6.702 min  
 Response: 0  
 Conc: N.D.

Instrument : ECD\_L  
 ClientSampleId : GH-SS-11



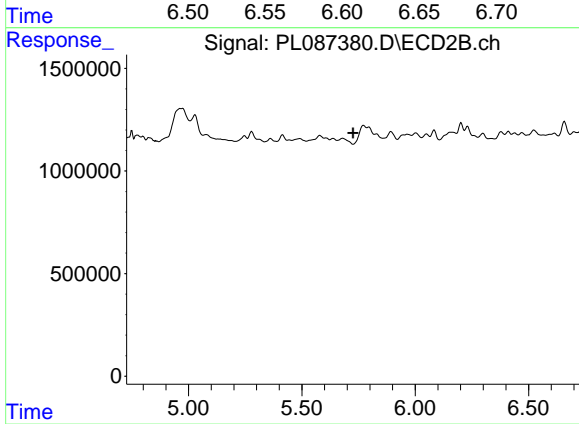
#15 Endosulfan II

R.T.: 5.893 min  
 Delta R.T.: 0.029 min  
 Response: 574403  
 Conc: 0.30 ng/ml



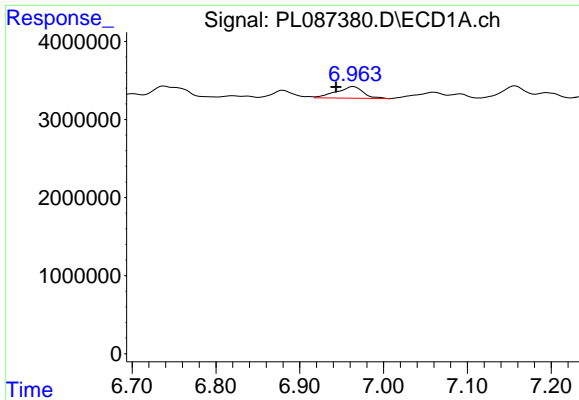
#16 4,4'-DDD

R.T.: 6.608 min  
 Delta R.T.: -0.018 min  
 Response: 95219  
 Conc: 0.03 ng/ml



#16 4,4'-DDD

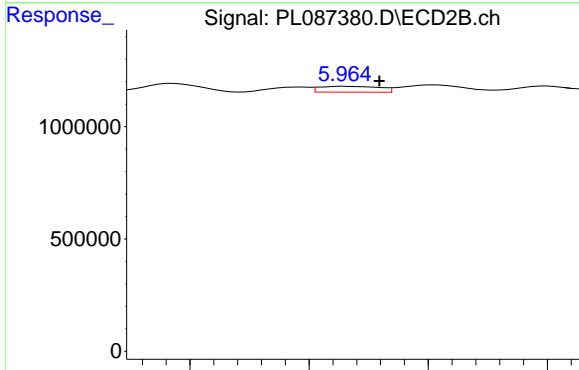
R.T.: 0.000 min  
 Exp R.T.: 5.727 min  
 Response: 0  
 Conc: N.D.



#17 4,4'-DDT

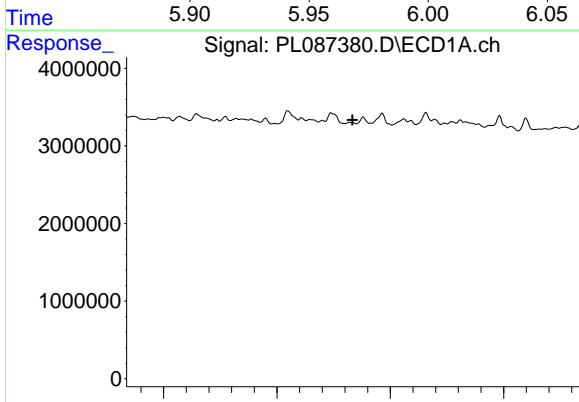
R.T.: 6.964 min  
 Delta R.T.: 0.021 min  
 Response: 3352751  
 Conc: 0.89 ng/ml

Instrument :  
 ECD\_L  
 ClientSampleId :  
 GHL-SS-11



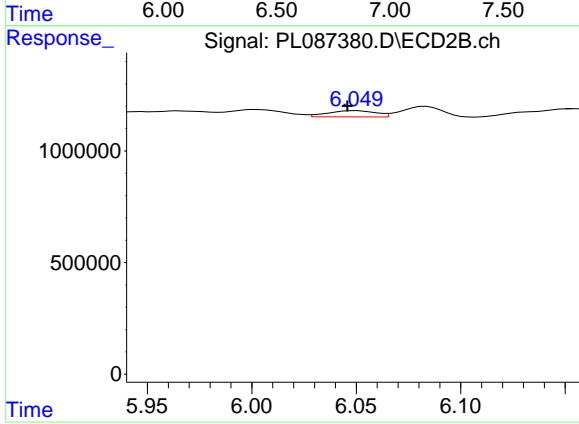
#17 4,4'-DDT

R.T.: 5.965 min  
 Delta R.T.: -0.014 min  
 Response: 451356  
 Conc: 0.24 ng/ml



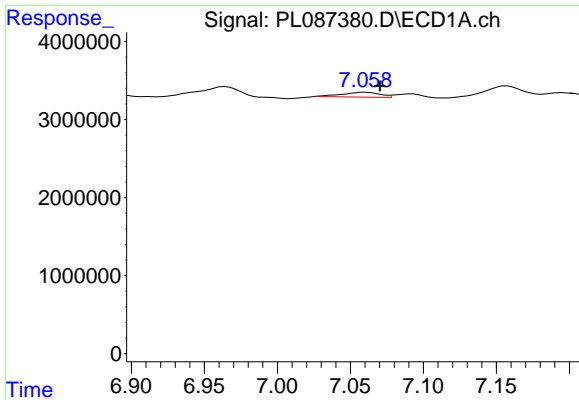
#18 Endrin aldehyde

R.T.: 0.000 min  
 Exp R.T. : 6.833 min  
 Response: 0  
 Conc: N.D.



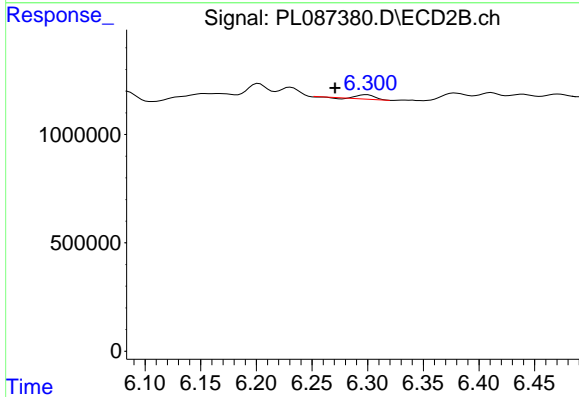
#18 Endrin aldehyde

R.T.: 6.050 min  
 Delta R.T.: 0.004 min  
 Response: 445051  
 Conc: 0.30 ng/ml

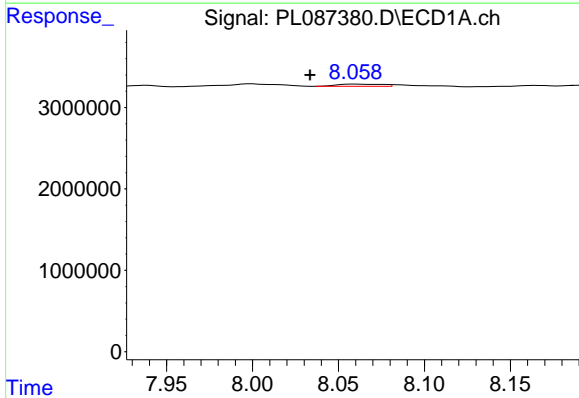


#19 Endosulfan Sulfate  
 R.T.: 7.060 min  
 Delta R.T.: -0.010 min  
 Response: 1117236  
 Conc: 0.28 ng/ml

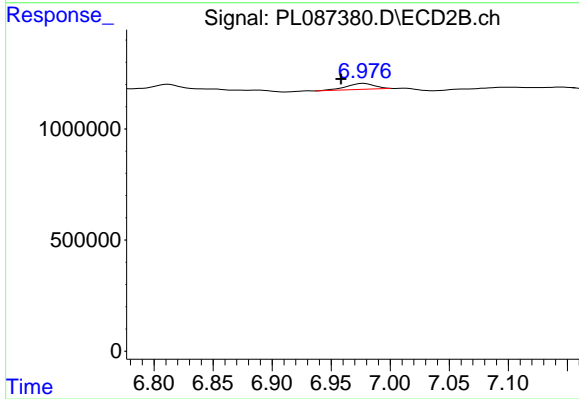
Instrument :  
 ECD\_L  
 ClientSampleId :  
 GHL-SS-11



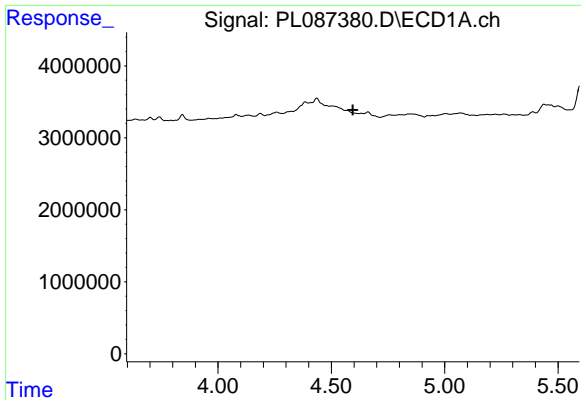
#19 Endosulfan Sulfate  
 R.T.: 6.299 min  
 Delta R.T.: 0.029 min  
 Response: 184575  
 Conc: 0.10 ng/ml



#22 Mirex  
 R.T.: 8.060 min  
 Delta R.T.: 0.026 min  
 Response: 476209  
 Conc: 0.14 ng/ml



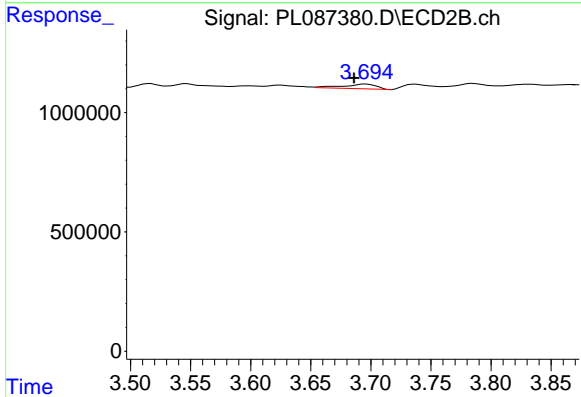
#22 Mirex  
 R.T.: 6.978 min  
 Delta R.T.: 0.019 min  
 Response: 439282  
 Conc: 0.25 ng/ml



#23 Chlordane-1

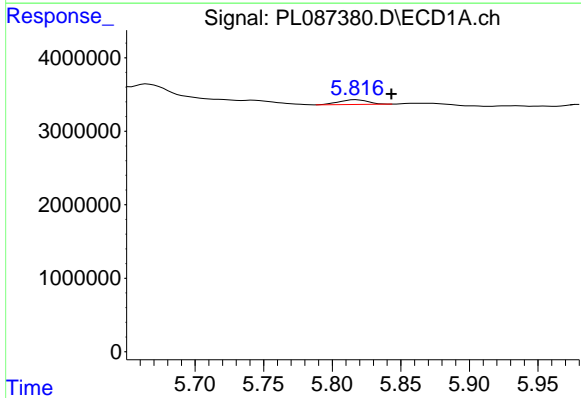
R.T.: 0.000 min  
 Exp R.T.: 4.594 min  
 Response: 0  
 Conc: N.D.

Instrument :  
 ECD\_L  
 ClientSampleId :  
 GHL-SS-11



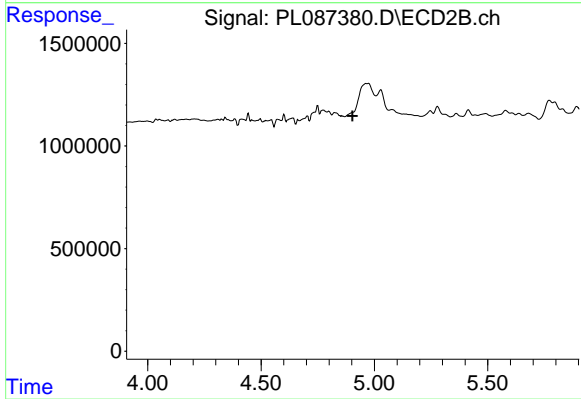
#23 Chlordane-1

R.T.: 3.696 min  
 Delta R.T.: 0.010 min  
 Response: 380837  
 Conc: 6.14 ng/ml



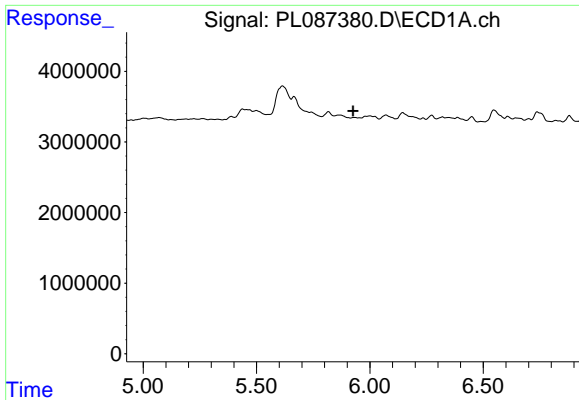
#25 Chlordane-3

R.T.: 5.818 min  
 Delta R.T.: -0.026 min  
 Response: 944280  
 Conc: 1.35 ng/ml



#25 Chlordane-3

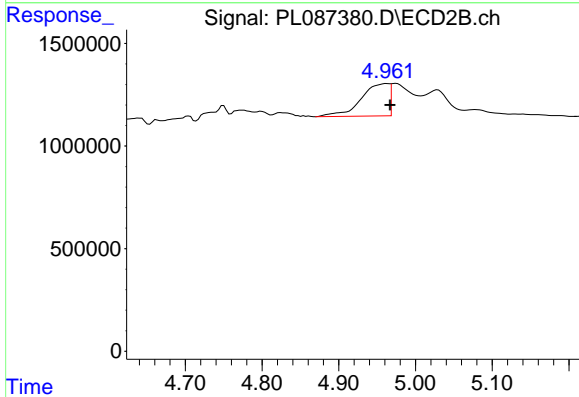
R.T.: 0.000 min  
 Exp R.T.: 4.904 min  
 Response: 0  
 Conc: N.D.



#26 Chlordane-4

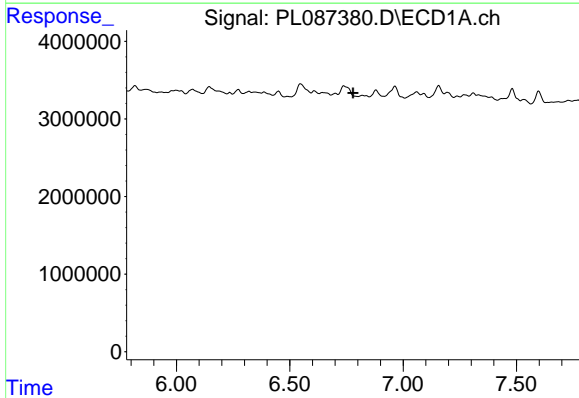
R.T.: 0.000 min  
 Exp R.T.: 5.927 min  
 Response: 0  
 Conc: N.D.

Instrument :  
 ECD\_L  
 ClientSampleId :  
 GHL-SS-11



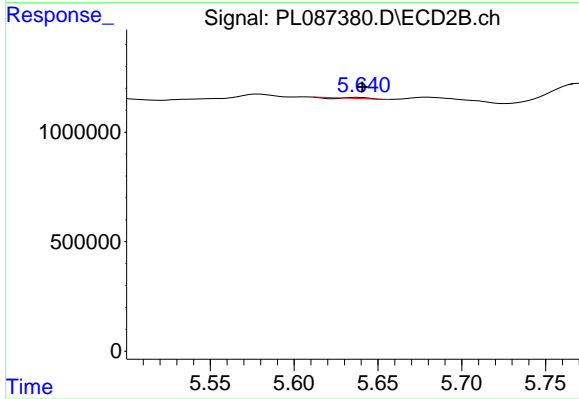
#26 Chlordane-4

R.T.: 4.963 min  
 Delta R.T.: -0.004 min  
 Response: 3998720  
 Conc: 17.18 ng/ml



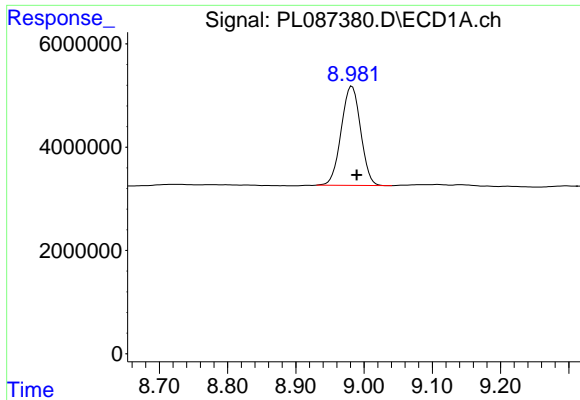
#27 Chlordane-5

R.T.: 0.000 min  
 Exp R.T.: 6.779 min  
 Response: 0  
 Conc: N.D.



#27 Chlordane-5

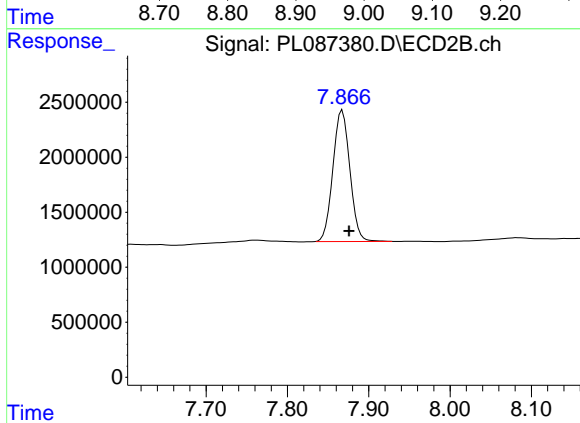
R.T.: 5.638 min  
 Delta R.T.: -0.002 min  
 Response: 17475  
 Conc: 0.27 ng/ml



#28 Decachlorobiphenyl

R.T.: 8.982 min  
Delta R.T.: -0.007 min  
Response: 38014899  
Conc: 11.15 ng/ml

Instrument :  
ECD\_L  
ClientSampleId :  
GHL-SS-11



#28 Decachlorobiphenyl

R.T.: 7.868 min  
Delta R.T.: -0.008 min  
Response: 17348884  
Conc: 10.27 ng/ml