

Data Path : Z:\pestpcbsrv\HPCHEM1\ECD_L\Data\PL122320\
 Data File : PL063783.D
 Signal(s) : Signal #1: ECD1A.ch Signal #2: ECD2B.ch
 Acq On : 23 Dec 2020 15:38
 Operator : AR\AJ
 Sample : L5186-01MSD
 Misc :
 ALS Vial : 11 Sample Multiplier: 1

Instrument :
 ECD_L
 ClientSampled :

Integration File signal 1: autoint1.e
 Integration File signal 2: autoint2.e
 Quant Time: Dec 23 16:14:14 2020
 Quant Method : Z:\pestpcbsrv\HPCHEM1\ECD_L\methods\PL122220.M
 Quant Title : GC Extractables
 QLast Update : Tue Dec 22 14:02:42 2020
 Response via : Initial Calibration
 Integrator: ChemStation

Volume Inj. : 1 µl
 Signal #1 Phase : ZB-MR2 Signal #2 Phase: ZB-MR1
 Signal #1 Info : 30M x 0.32mm x0.2 Signal #2 Info : 30M x 0.32mm x0.5µm

Compound	RT#1	RT#2	Resp#1	Resp#2	ng/ml	ng/ml
System Monitoring Compounds						
1) SA Tetrachlo...	3.439	4.111	48119729	45142848	16.051	17.682
28) SA Decachlor...	8.178	9.267	47997775	35875766	17.421	18.196
Target Compounds						
2) A alpha-BHC	3.873	4.513	160.2E6	125.1E6	32.101	34.725
3) MA gamma-BHC...	4.154	4.804	149.0E6	115.7E6	32.590	33.904
4) MA Heptachlor	4.454	5.316	150.6E6	118.3E6	35.763	37.051
5) MB Aldrin	4.700	5.626	141.7E6	102.8E6	35.476	35.920
6) B beta-BHC	4.403	4.979	69848451	56441019	36.139	32.154
7) B delta-BHC	4.605	5.201	107.3E6	82252222	23.671	25.020
8) B Heptachlo...	5.141	6.020	136.2E6	100.8E6	36.262	36.331
9) A Endosulfan I	5.478	6.382	131.0E6	94143155	37.843	37.426
10) B gamma-Chl...	5.368	6.255	141.5E6	101.6E6	37.225	36.717
11) B alpha-Chl...	5.426	6.327	136.5E6	100.6E6	36.386	36.436
12) B 4,4'-DDE	5.593	6.483	129.9E6	91605267	37.793	37.092
13) MA Dieldrin	5.720	6.642	138.1E6	95926032	38.100	36.823
14) MA Endrin	5.975	6.864	124.3E6	78143517	42.657	40.267
15) B Endosulfa...	6.247	7.077	124.0E6	84084807	37.619	35.668
16) A 4,4'-DDD	6.106	6.981	112.1E6	77750673	38.318	36.776
17) MA 4,4'-DDT	6.347	7.281	116.1E6	81370333	43.823	41.826
18) B Endrin al...	6.416	7.202	99083900	68259687	35.802	33.859
19) B Endosulfa...	6.629	7.425	130.8E6	81037729	41.552	36.034
20) A Methoxychlor	6.894	7.740	62375586	42590905	47.478	40.369
21) B Endrin ke...	7.115	7.904	136.0E6	92386624	39.126	37.463
22) Mirex	7.303	8.357	102.5E6	68609991	40.839	38.036
24) Chlordane-2	0.000	5.626f	0	102.8E6	N.D.	1065.574 #
25) Chlordane-3	5.368	6.255	141.5E6	101.6E6	433.095	296.505 #
26) Chlordane-4	5.426	6.327	136.5E6	100.6E6	510.150	244.683 #
27) Chlordane-5	6.247	0.000	124.0E6	0	1153.117	N.D. #

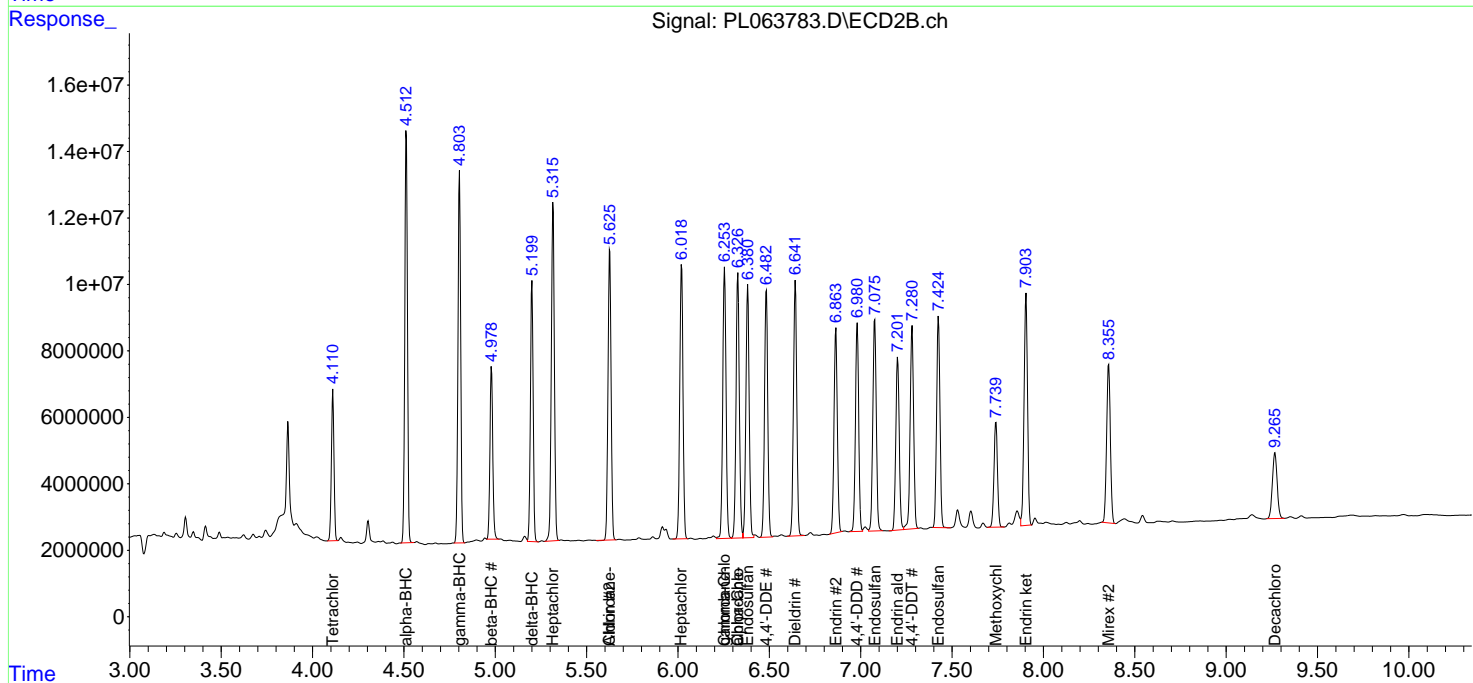
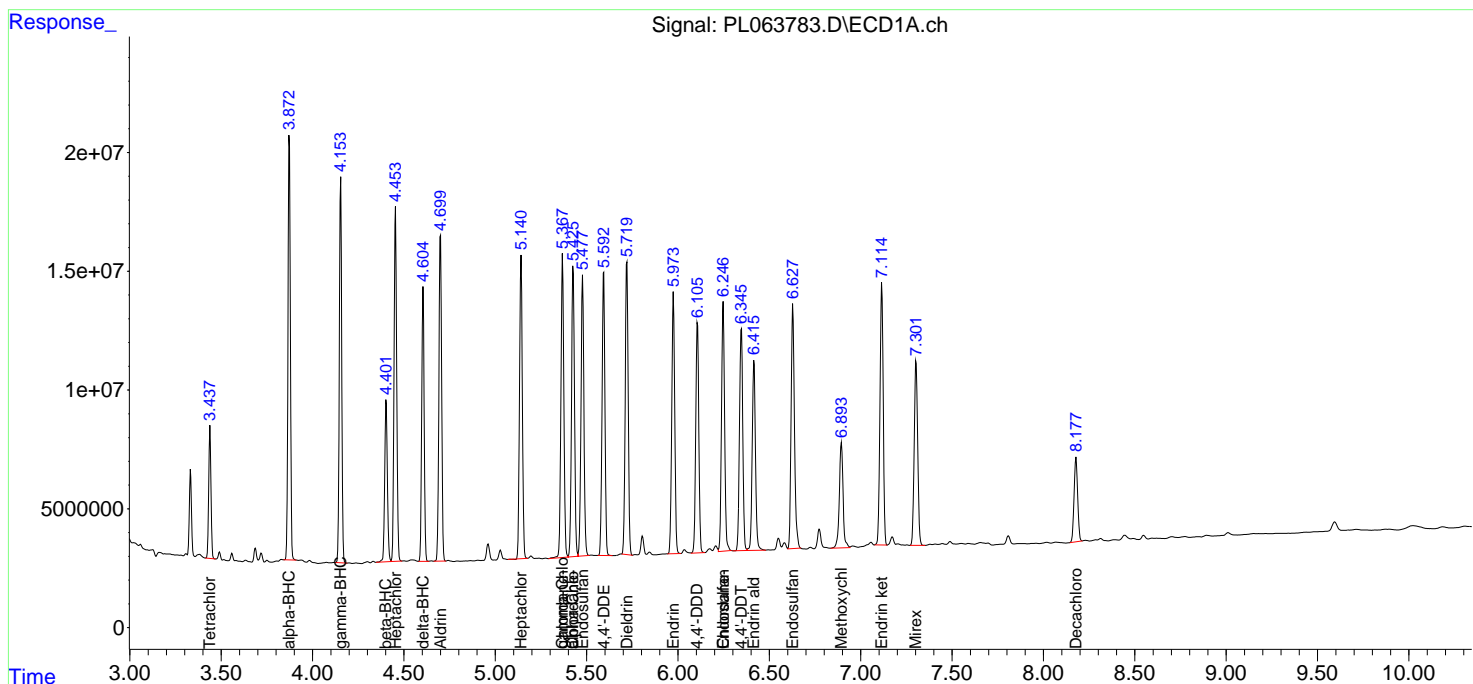
(f)=RT Delta > 1/2 Window (#)=Amounts differ by > 25% (m)=manual int.

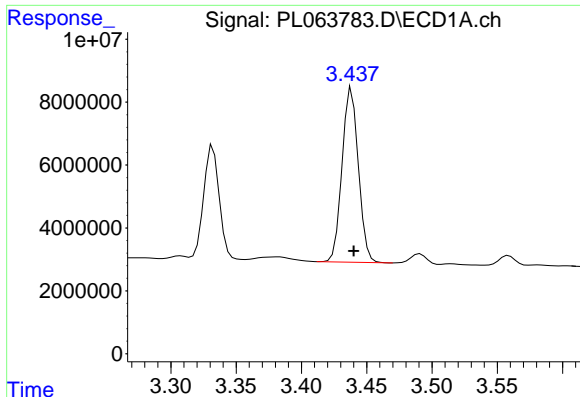
Data Path : Z:\pestpcbsrv\HPCHEM1\ECD_L\Data\PL122320\
 Data File : PL063783.D
 Signal(s) : Signal #1: ECD1A.ch Signal #2: ECD2B.ch
 Acq On : 23 Dec 2020 15:38
 Operator : AR\AJ
 Sample : L5186-01MSD
 Misc :
 ALS Vial : 11 Sample Multiplier: 1

Instrument :
 ECD_L
 ClientSampled :

Integration File signal 1: autoint1.e
 Integration File signal 2: autoint2.e
 Quant Time: Dec 23 16:14:14 2020
 Quant Method : Z:\pestpcbsrv\HPCHEM1\ECD_L\methods\PL122220.M
 Quant Title : GC Extractables
 QLast Update : Tue Dec 22 14:02:42 2020
 Response via : Initial Calibration
 Integrator: ChemStation

Volume Inj. : 1 µl
 Signal #1 Phase : ZB-MR2 Signal #2 Phase: ZB-MR1
 Signal #1 Info : 30M x 0.32mm x0.2 Signal #2 Info : 30M x 0.32mm x0.5µm

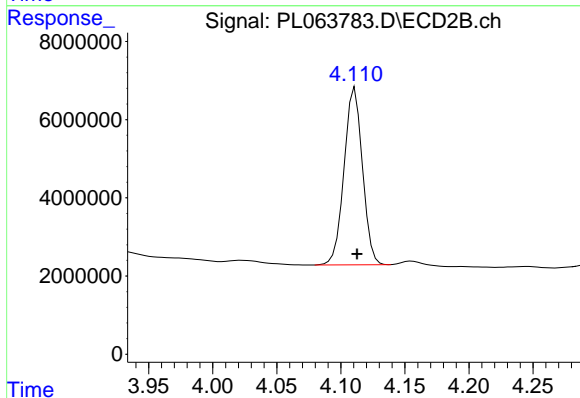




#1 Tetrachloro-m-xylene

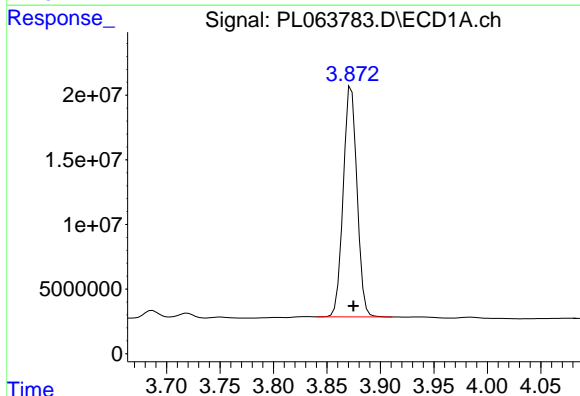
R.T.: 3.439 min
 Delta R.T.: -0.001 min
 Response: 48119729
 Conc: 16.05 ng/ml

Instrument :
 ECD_L
 ClientSampled :



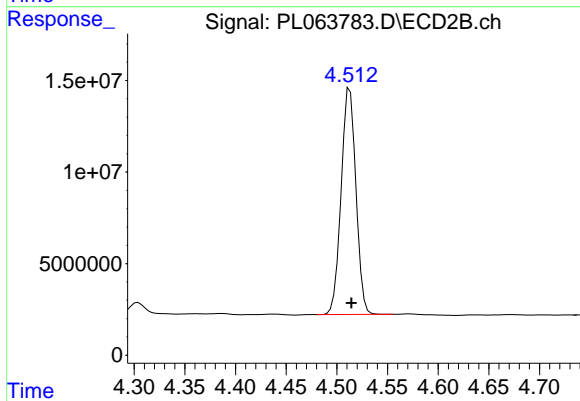
#1 Tetrachloro-m-xylene

R.T.: 4.111 min
 Delta R.T.: -0.002 min
 Response: 45142848
 Conc: 17.68 ng/ml



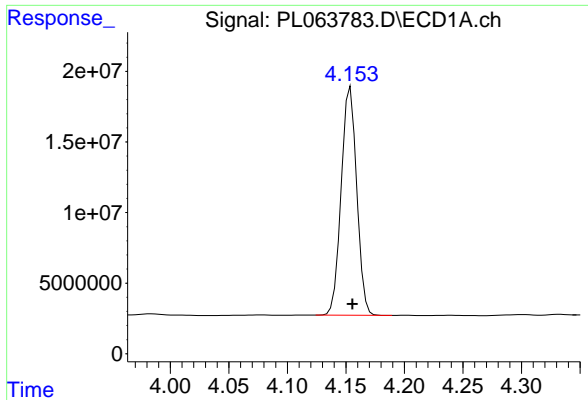
#2 alpha-BHC

R.T.: 3.873 min
 Delta R.T.: -0.002 min
 Response: 160248222
 Conc: 32.10 ng/ml



#2 alpha-BHC

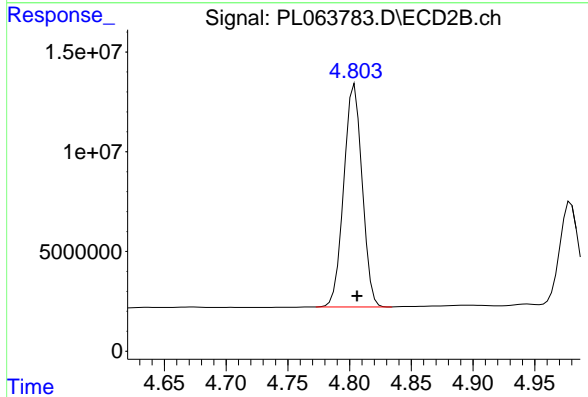
R.T.: 4.513 min
 Delta R.T.: -0.001 min
 Response: 125094316
 Conc: 34.73 ng/ml



#3 gamma-BHC (Lindane)

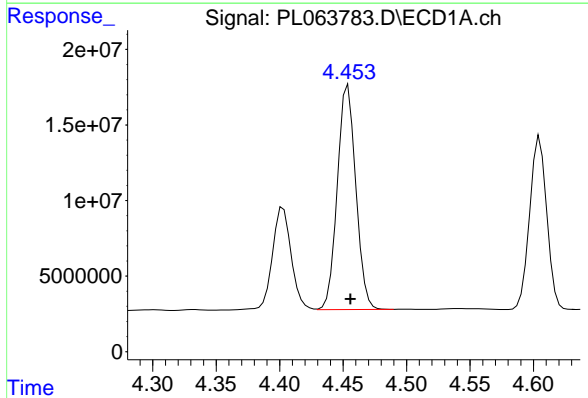
R.T.: 4.154 min
Delta R.T.: -0.001 min
Response: 148969904
Conc: 32.59 ng/ml

Instrument :
ECD_L
ClientSampleId :



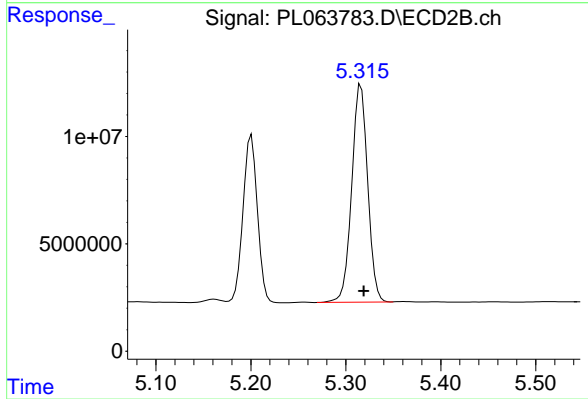
#3 gamma-BHC (Lindane)

R.T.: 4.804 min
Delta R.T.: -0.002 min
Response: 115656246
Conc: 33.90 ng/ml



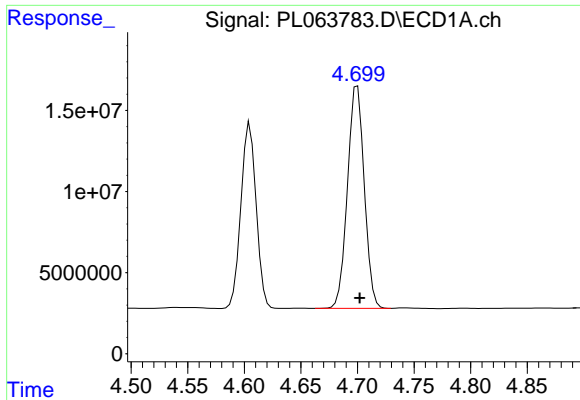
#4 Heptachlor

R.T.: 4.454 min
Delta R.T.: -0.002 min
Response: 150605032
Conc: 35.76 ng/ml



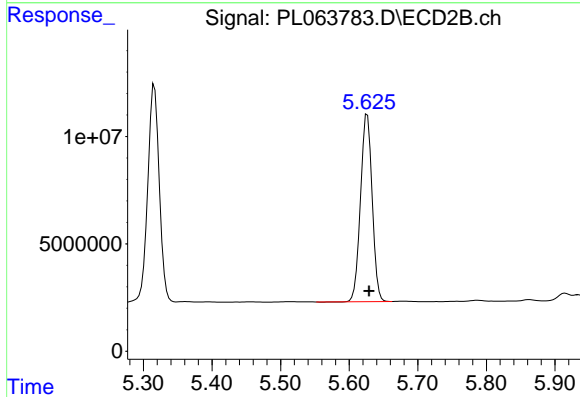
#4 Heptachlor

R.T.: 5.316 min
Delta R.T.: -0.003 min
Response: 118302537
Conc: 37.05 ng/ml

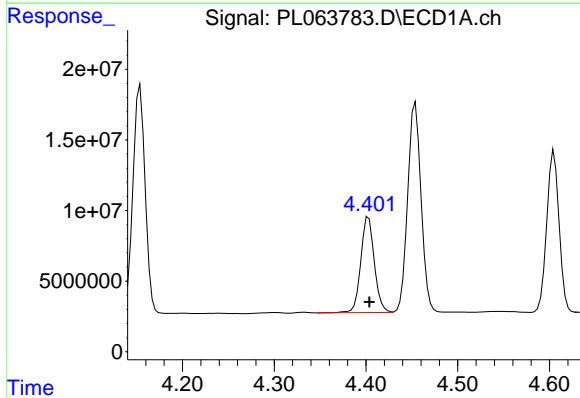


#5 Aldrin
 R.T.: 4.700 min
 Delta R.T.: -0.002 min
 Response: 141698268
 Conc: 35.48 ng/ml

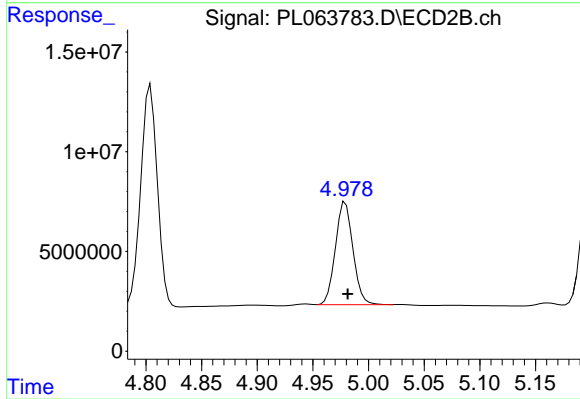
Instrument :
 ECD_L
 ClientSampleId :



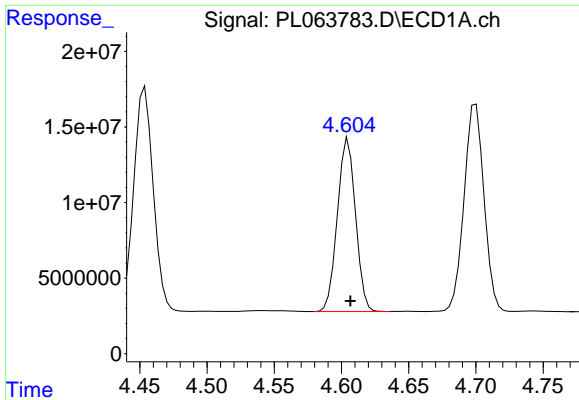
#5 Aldrin
 R.T.: 5.626 min
 Delta R.T.: -0.003 min
 Response: 102815141
 Conc: 35.92 ng/ml



#6 beta-BHC
 R.T.: 4.403 min
 Delta R.T.: 0.000 min
 Response: 69848451
 Conc: 36.14 ng/ml

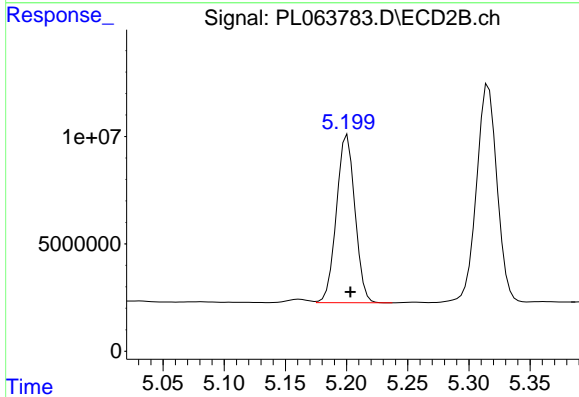


#6 beta-BHC
 R.T.: 4.979 min
 Delta R.T.: -0.002 min
 Response: 56441019
 Conc: 32.15 ng/ml

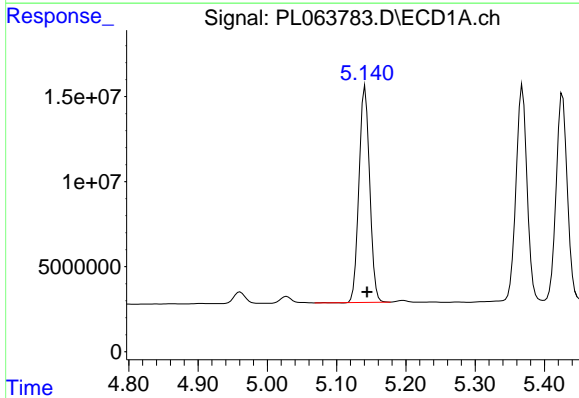


#7 delta-BHC
 R.T.: 4.605 min
 Delta R.T.: -0.002 min
 Response: 107285565
 Conc: 23.67 ng/ml

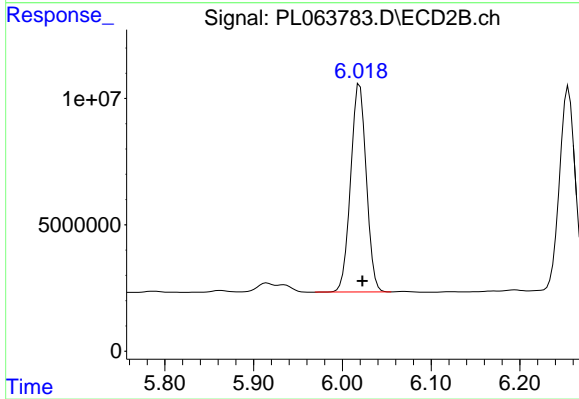
Instrument :
 ECD_L
 ClientSampled :



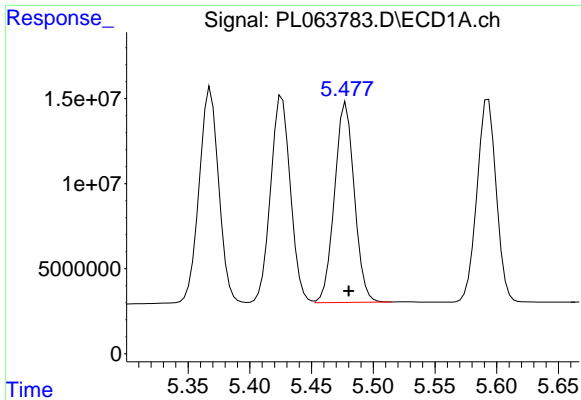
#7 delta-BHC
 R.T.: 5.201 min
 Delta R.T.: -0.003 min
 Response: 82252222
 Conc: 25.02 ng/ml



#8 Heptachlor epoxide
 R.T.: 5.141 min
 Delta R.T.: -0.003 min
 Response: 136234815
 Conc: 36.26 ng/ml

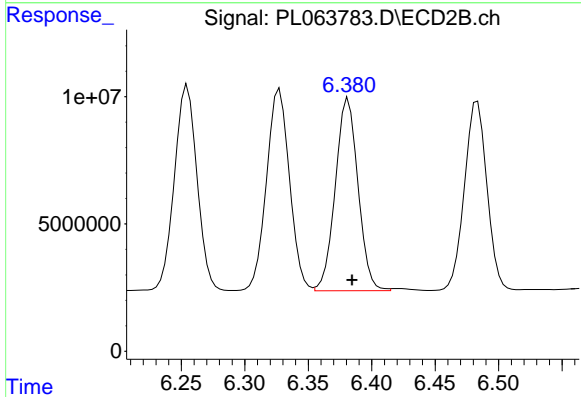


#8 Heptachlor epoxide
 R.T.: 6.020 min
 Delta R.T.: -0.003 min
 Response: 100820589
 Conc: 36.33 ng/ml

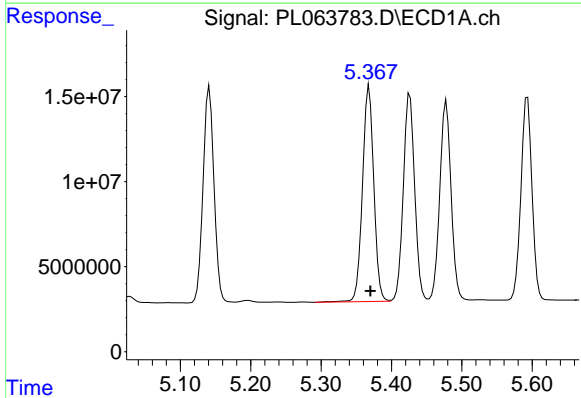


#9 Endosulfan I
 R.T.: 5.478 min
 Delta R.T.: -0.002 min
 Response: 131028224
 Conc: 37.84 ng/ml

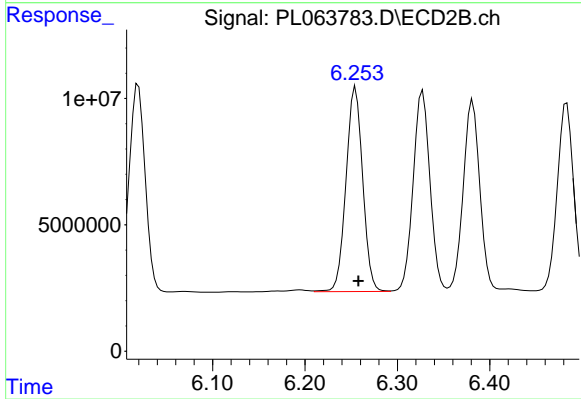
Instrument :
 ECD_L
 ClientSampleId :



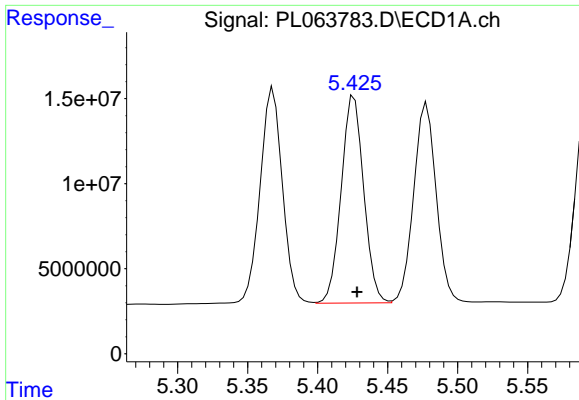
#9 Endosulfan I
 R.T.: 6.382 min
 Delta R.T.: -0.003 min
 Response: 94143155
 Conc: 37.43 ng/ml



#10 gamma-Chlordane
 R.T.: 5.368 min
 Delta R.T.: -0.002 min
 Response: 141522261
 Conc: 37.22 ng/ml



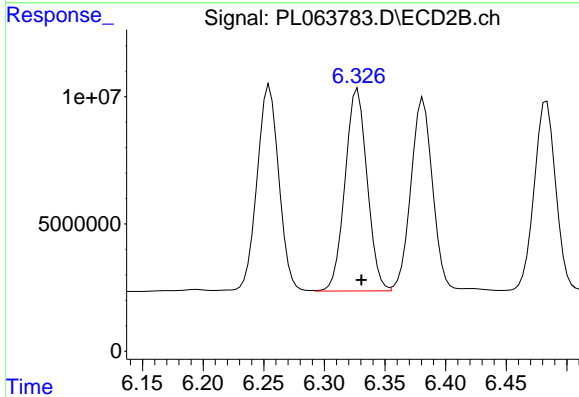
#10 gamma-Chlordane
 R.T.: 6.255 min
 Delta R.T.: -0.003 min
 Response: 101593700
 Conc: 36.72 ng/ml



#11 alpha-Chlordane

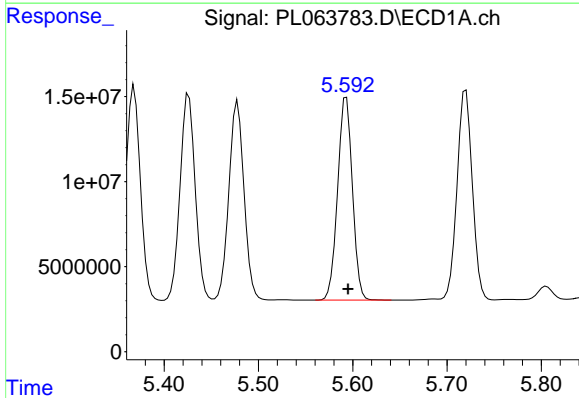
R.T.: 5.426 min
Delta R.T.: -0.002 min
Response: 136496943
Conc: 36.39 ng/ml

Instrument :
ECD_L
ClientSampled :



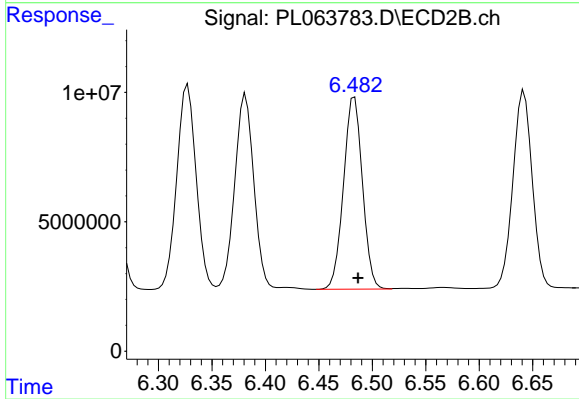
#11 alpha-Chlordane

R.T.: 6.327 min
Delta R.T.: -0.003 min
Response: 100572399
Conc: 36.44 ng/ml



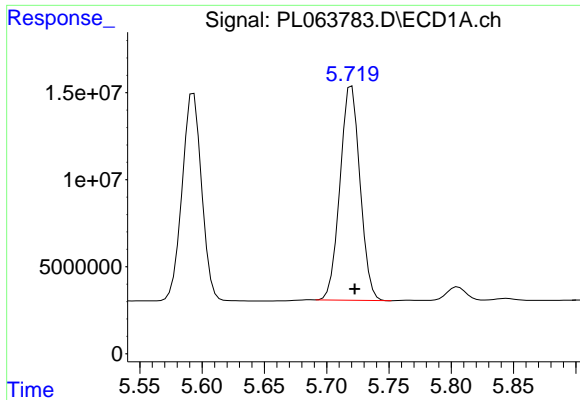
#12 4,4'-DDE

R.T.: 5.593 min
Delta R.T.: -0.002 min
Response: 129924139
Conc: 37.79 ng/ml



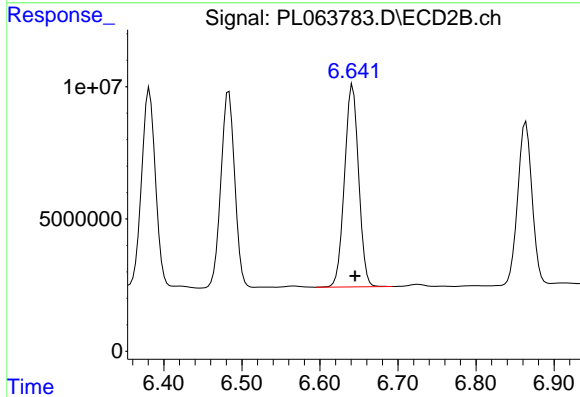
#12 4,4'-DDE

R.T.: 6.483 min
Delta R.T.: -0.003 min
Response: 91605267
Conc: 37.09 ng/ml

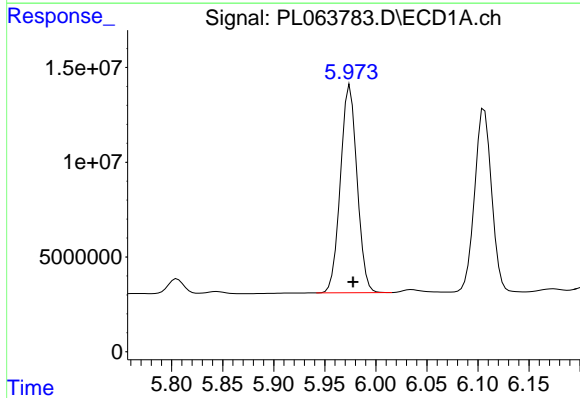


#13 Dieldrin
 R.T.: 5.720 min
 Delta R.T.: -0.003 min
 Response: 138093798
 Conc: 38.10 ng/ml

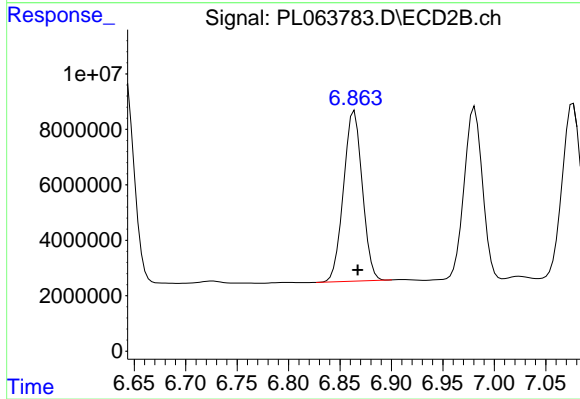
Instrument :
 ECD_L
 ClientSampled :



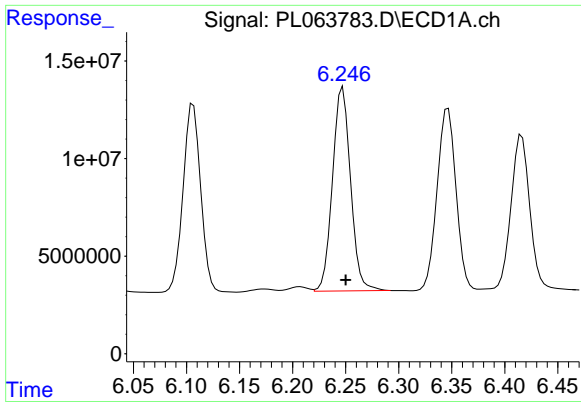
#13 Dieldrin
 R.T.: 6.642 min
 Delta R.T.: -0.003 min
 Response: 95926032
 Conc: 36.82 ng/ml



#14 Endrin
 R.T.: 5.975 min
 Delta R.T.: -0.003 min
 Response: 124318029
 Conc: 42.66 ng/ml



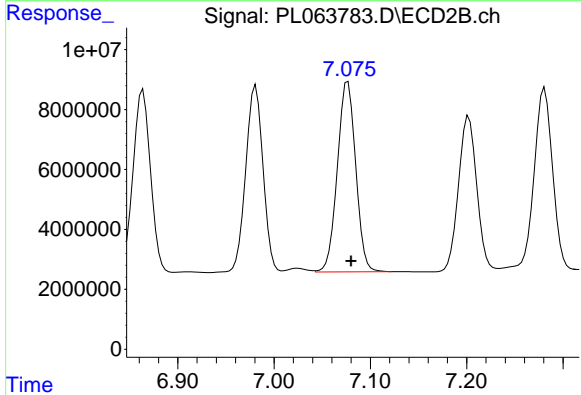
#14 Endrin
 R.T.: 6.864 min
 Delta R.T.: -0.003 min
 Response: 78143517
 Conc: 40.27 ng/ml



#15 Endosulfan II

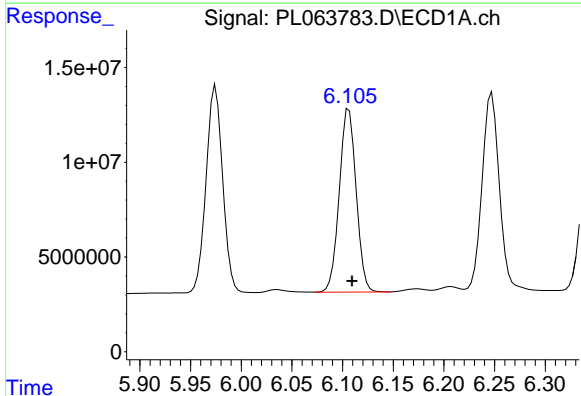
R.T.: 6.247 min
 Delta R.T.: -0.003 min
 Response: 12405563
 Conc: 37.62 ng/ml

Instrument :
 ECD_L
 ClientSampled :



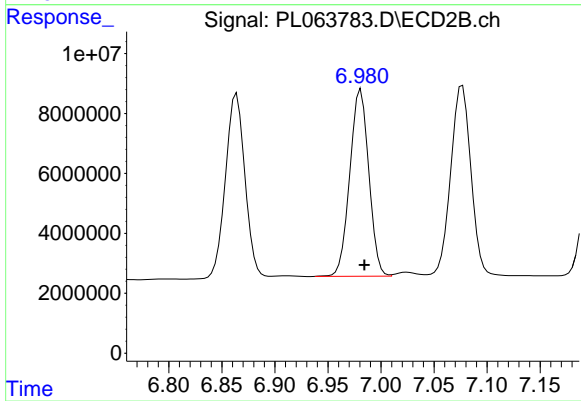
#15 Endosulfan II

R.T.: 7.077 min
 Delta R.T.: -0.003 min
 Response: 84084807
 Conc: 35.67 ng/ml



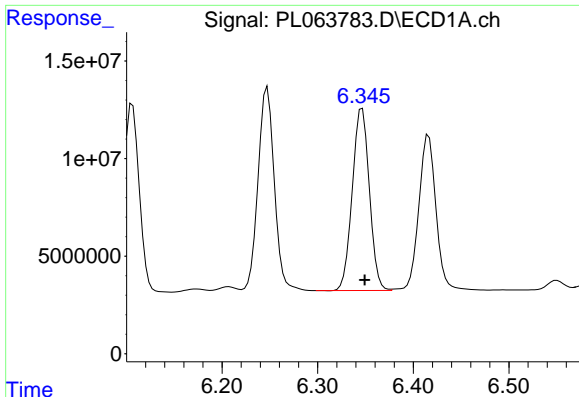
#16 4,4'-DDD

R.T.: 6.106 min
 Delta R.T.: -0.003 min
 Response: 112073047
 Conc: 38.32 ng/ml



#16 4,4'-DDD

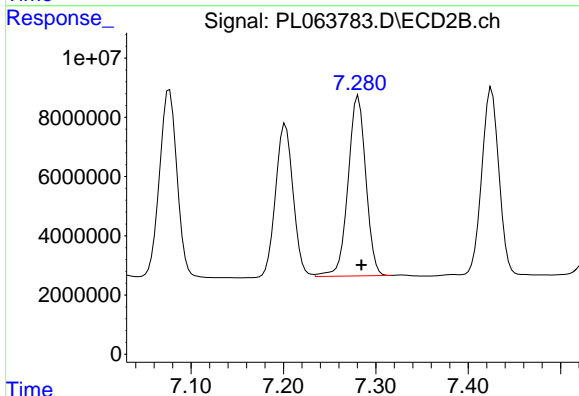
R.T.: 6.981 min
 Delta R.T.: -0.003 min
 Response: 77750673
 Conc: 36.78 ng/ml



#17 4,4'-DDT

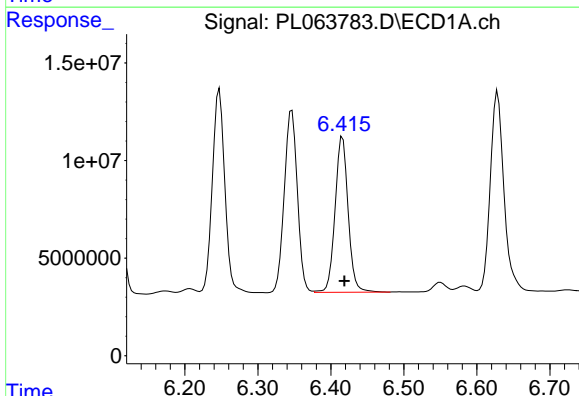
R.T.: 6.347 min
Delta R.T.: -0.003 min
Response: 116130963
Conc: 43.82 ng/ml

Instrument :
ECD_L
ClientSampled :



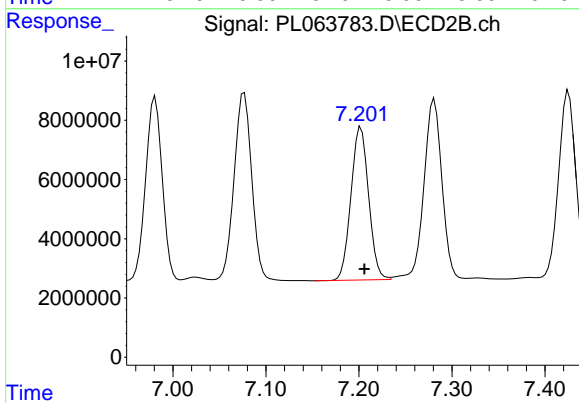
#17 4,4'-DDT

R.T.: 7.281 min
Delta R.T.: -0.003 min
Response: 81370333
Conc: 41.83 ng/ml



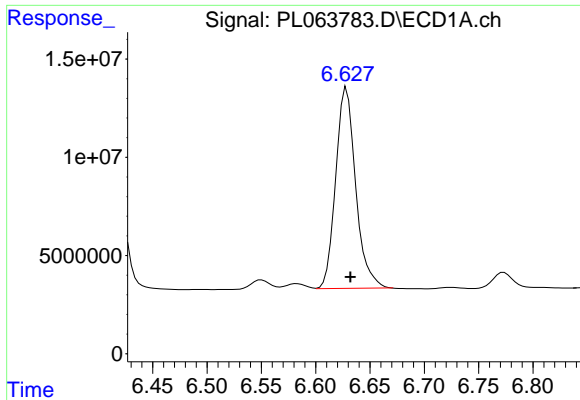
#18 Endrin aldehyde

R.T.: 6.416 min
Delta R.T.: -0.003 min
Response: 99083900
Conc: 35.80 ng/ml



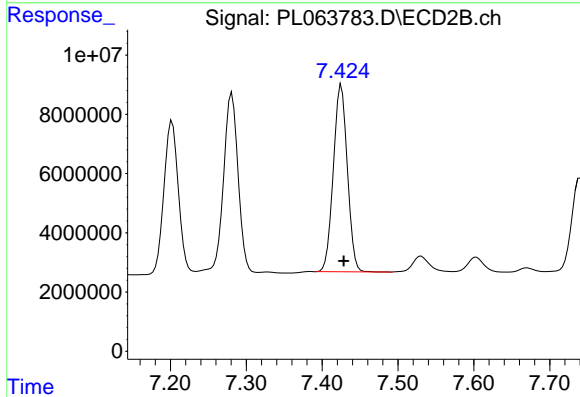
#18 Endrin aldehyde

R.T.: 7.202 min
Delta R.T.: -0.003 min
Response: 68259687
Conc: 33.86 ng/ml

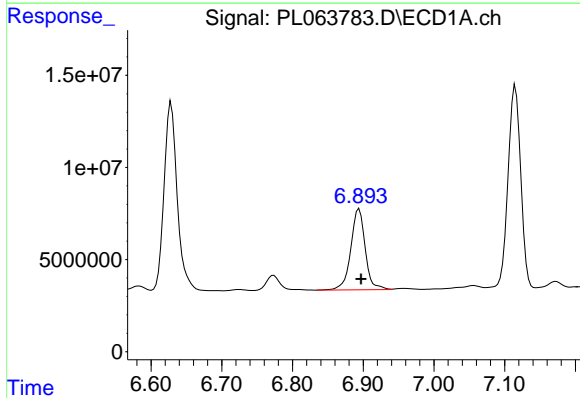


#19 Endosulfan Sulfate
 R.T.: 6.629 min
 Delta R.T.: -0.003 min
 Response: 130839796
 Conc: 41.55 ng/ml

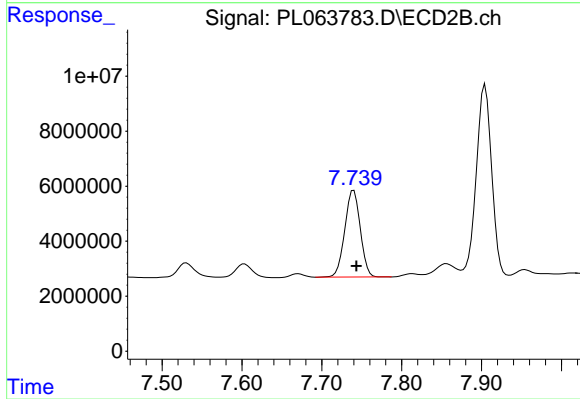
Instrument :
 ECD_L
 ClientSampleId :



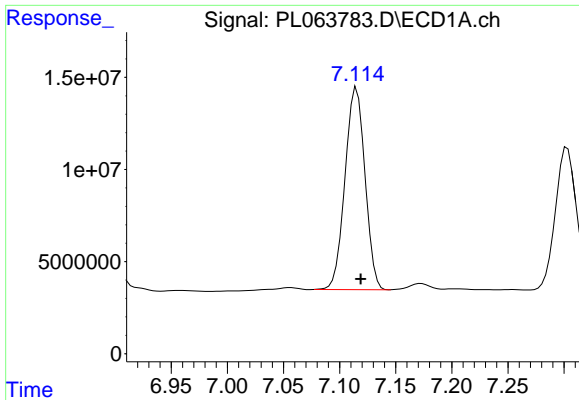
#19 Endosulfan Sulfate
 R.T.: 7.425 min
 Delta R.T.: -0.003 min
 Response: 81037729
 Conc: 36.03 ng/ml



#20 Methoxychlor
 R.T.: 6.894 min
 Delta R.T.: -0.003 min
 Response: 62375586
 Conc: 47.48 ng/ml



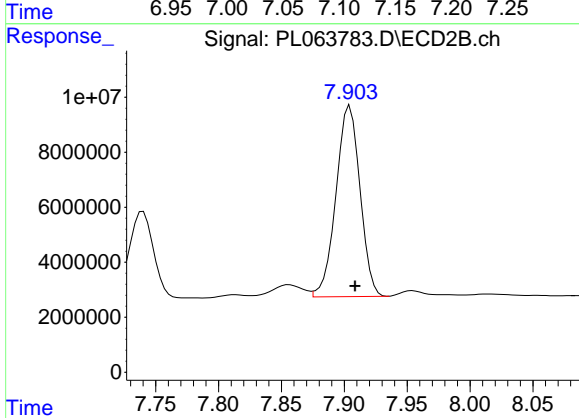
#20 Methoxychlor
 R.T.: 7.740 min
 Delta R.T.: -0.003 min
 Response: 42590905
 Conc: 40.37 ng/ml



#21 Endrin ketone

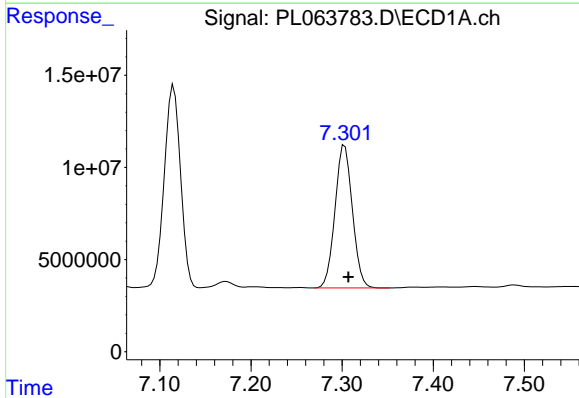
R.T.: 7.115 min
 Delta R.T.: -0.004 min
 Response: 136027371
 Conc: 39.13 ng/ml

Instrument :
 ECD_L
 ClientSampled :



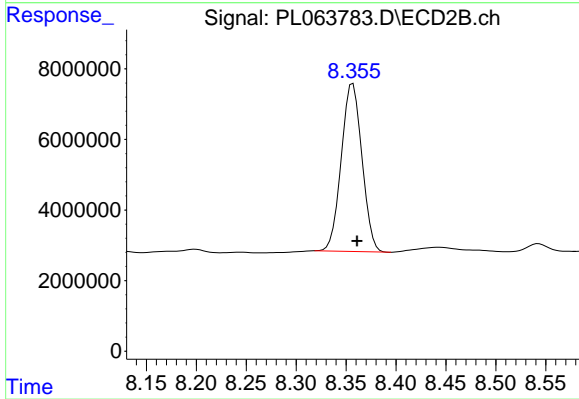
#21 Endrin ketone

R.T.: 7.904 min
 Delta R.T.: -0.004 min
 Response: 92386624
 Conc: 37.46 ng/ml



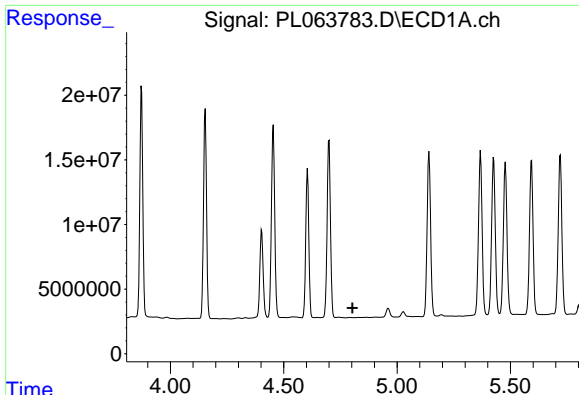
#22 Mirex

R.T.: 7.303 min
 Delta R.T.: -0.004 min
 Response: 102548001
 Conc: 40.84 ng/ml



#22 Mirex

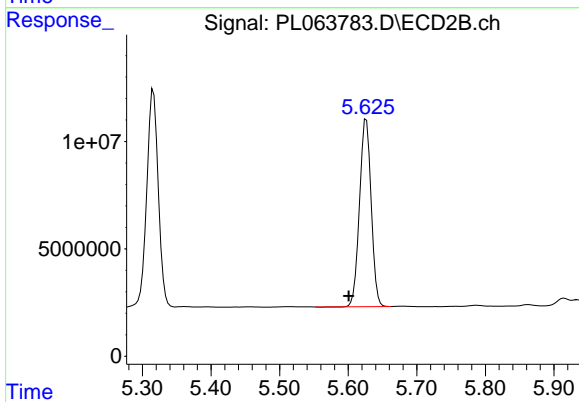
R.T.: 8.357 min
 Delta R.T.: -0.004 min
 Response: 68609991
 Conc: 38.04 ng/ml



#24 Chlordane-2

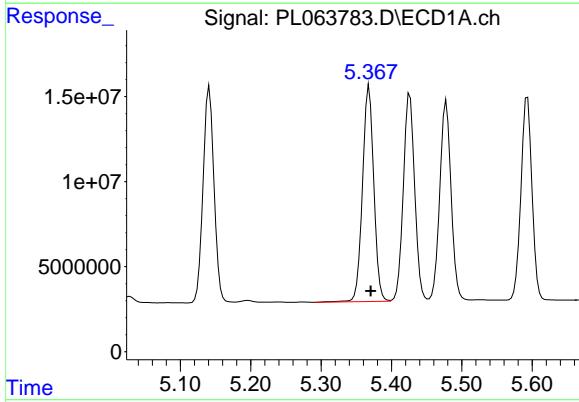
R.T.: 0.000 min
 Exp R.T.: 4.804 min
 Response: 0
 Conc: N.D.

Instrument :
 ECD_L
 ClientSampled :



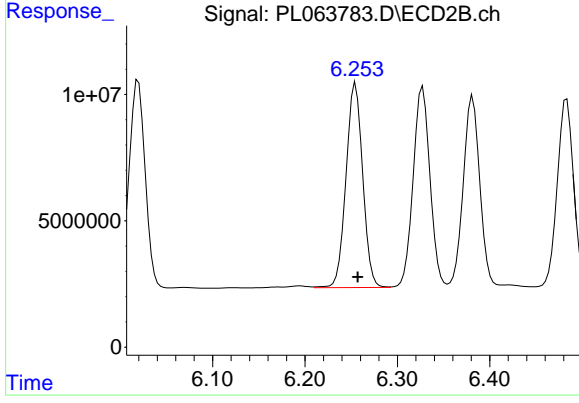
#24 Chlordane-2

R.T.: 5.626 min
 Delta R.T.: 0.025 min
 Response: 102815141
 Conc: 1065.57 ng/ml



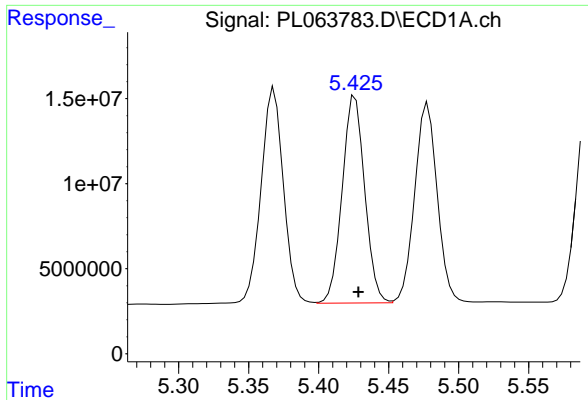
#25 Chlordane-3

R.T.: 5.368 min
 Delta R.T.: -0.002 min
 Response: 141522261
 Conc: 433.10 ng/ml



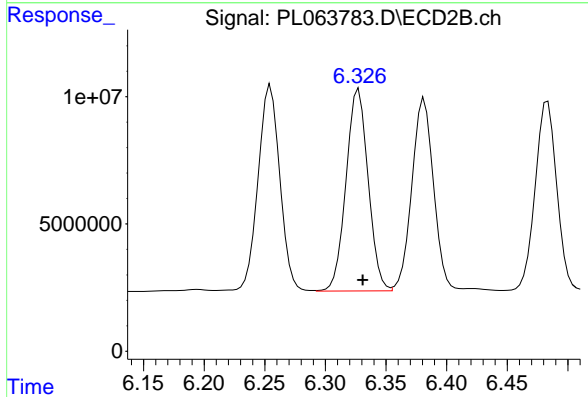
#25 Chlordane-3

R.T.: 6.255 min
 Delta R.T.: -0.002 min
 Response: 101593700
 Conc: 296.51 ng/ml

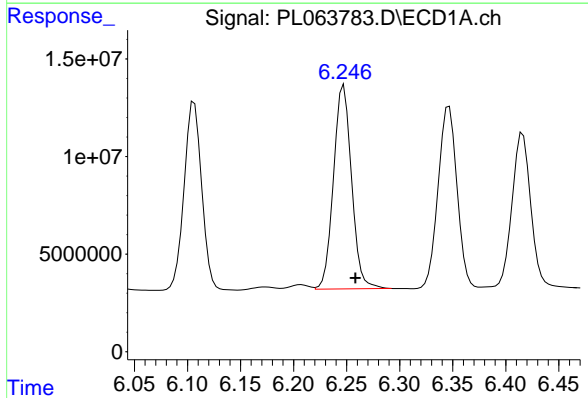


#26 Chlordane-4
 R.T.: 5.426 min
 Delta R.T.: -0.002 min
 Response: 136496943
 Conc: 510.15 ng/ml

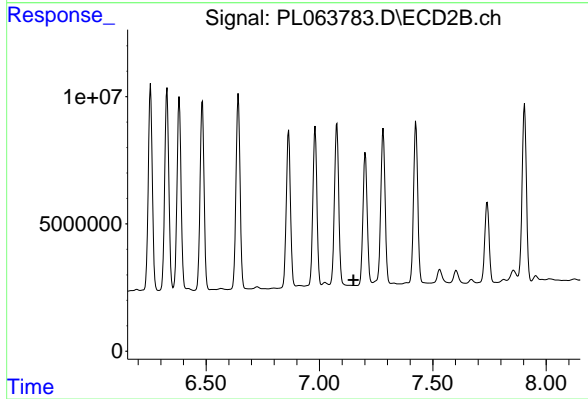
Instrument :
 ECD_L
 ClientSampled :



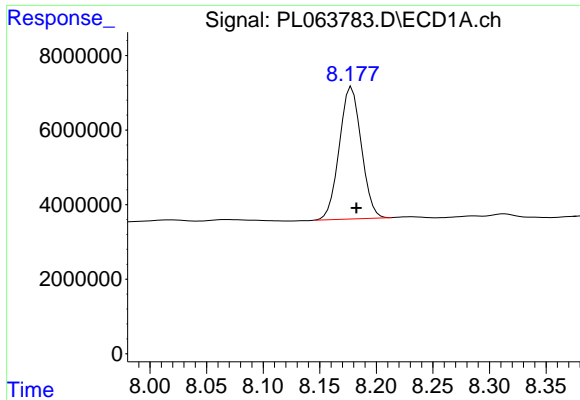
#26 Chlordane-4
 R.T.: 6.327 min
 Delta R.T.: -0.003 min
 Response: 100572399
 Conc: 244.68 ng/ml



#27 Chlordane-5
 R.T.: 6.247 min
 Delta R.T.: -0.011 min
 Response: 124005563
 Conc: 1153.12 ng/ml



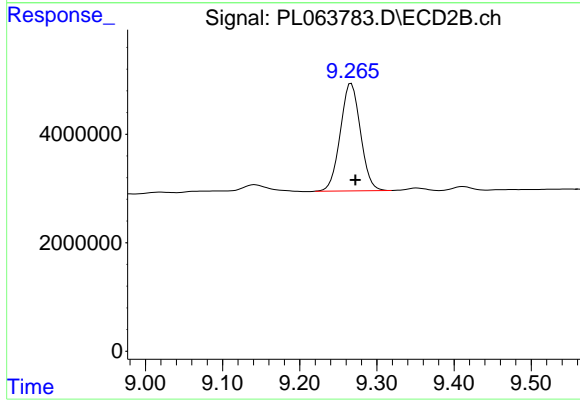
#27 Chlordane-5
 R.T.: 0.000 min
 Exp R.T.: 7.150 min
 Response: 0
 Conc: N.D.



#28 Decachlorobiphenyl

R.T.: 8.178 min
Delta R.T.: -0.004 min
Response: 47997775
Conc: 17.42 ng/ml

Instrument :
ECD_L
ClientSampleId :



#28 Decachlorobiphenyl

R.T.: 9.267 min
Delta R.T.: -0.005 min
Response: 35875766
Conc: 18.20 ng/ml