

Data Path : Z:\pestpcbsrv\HPCHEM1\ECD\_L\Data\PL122321\  
 Data File : PL071604.D  
 Signal(s) : Signal #1: ECD1A.ch Signal #2: ECD2B.ch  
 Acq On : 23 Dec 2021 15:26  
 Operator : AR\AJ  
 Sample : M5202-03  
 Misc :  
 ALS Vial : 12 Sample Multiplier: 1

Instrument :  
 ECD\_L  
 ClientSampleId :

Integration File signal 1: autoint1.e  
 Integration File signal 2: autoint2.e  
 Quant Time: Dec 24 01:02:11 2021  
 Quant Method : Z:\pestpcbsrv\HPCHEM1\ECD\_L\methods\PL121421.M  
 Quant Title : GC Extractables  
 QLast Update : Tue Dec 14 14:29:34 2021  
 Response via : Initial Calibration  
 Integrator: ChemStation

Volume Inj. : 1 µl  
 Signal #1 Phase : ZB-MR2 Signal #2 Phase: ZB-MR1  
 Signal #1 Info : 30M x 0.32mm x0.2 Signal #2 Info : 30M x 0.32mm x0.5µm

	Compound	RT#1	RT#2	Resp#1	Resp#2	ng/ml	ng/ml
-----							
System Monitoring Compounds							
1)	SA Tetrachlo...	4.561	5.497	8727869	18670350	18.413	15.672
28)	SA Decachlor...	10.321	11.388	11992849	20345283	18.051	18.726
Target Compounds							
3)	MA gamma-BHC...	0.000	6.477	0	421605	N.D.	0.264 #
4)	MA Heptachlor	6.093	0.000	155987	0	0.226	N.D. #
5)	MB Aldrin	6.419	7.498	532181	410401	0.864	0.281 #
6)	B beta-BHC	6.093f	6.721	155987	2212737	0.546	2.764 #
9)	A Endosulfan I	7.424f	8.362	527151	1200300	0.908	1.000
10)	B gamma-Chl...	0.000	8.231	0	3559293	N.D.	2.753 #
11)	B alpha-Chl...	0.000	8.307	0	5938831	N.D.	4.674 #
12)	B 4,4'-DDE	0.000	8.478f	0	1409137	N.D.	1.183 #
13)	MA Dieldrin	7.688	8.673f	622627	-19681	1.063	N.D. #
15)	B Endosulfa...	0.000	9.144f	0	2824086	N.D.	2.799 #
16)	A 4,4'-DDD	0.000	9.029	0	803165	N.D.	0.910 #
17)	MA 4,4'-DDT	8.396	9.321f	387502	813212	0.759	0.822
18)	B Endrin al...	0.000	9.253	0	98856	N.D.	0.131 #
19)	B Endosulfa...	8.707	0.000	132524	0	0.231	N.D. #
20)	A Methoxychlor	8.973f	0.000	167006	0	0.516	N.D. #
21)	B Endrin ke...	0.000	10.009f	0	561349	N.D.	0.534 #
23)	Chlordane-1	5.881	0.000	1277880	0	75.789	N.D. #
24)	Chlordane-2	6.592f	7.467	324950	705040	15.031	14.950
25)	Chlordane-3	0.000	8.231	0	3559293	N.D.	20.332 #
26)	Chlordane-4	0.000	8.307	0	5938831	N.D.	28.286 #
27)	Chlordane-5	0.000	9.183	0	425252	N.D.	12.104 #

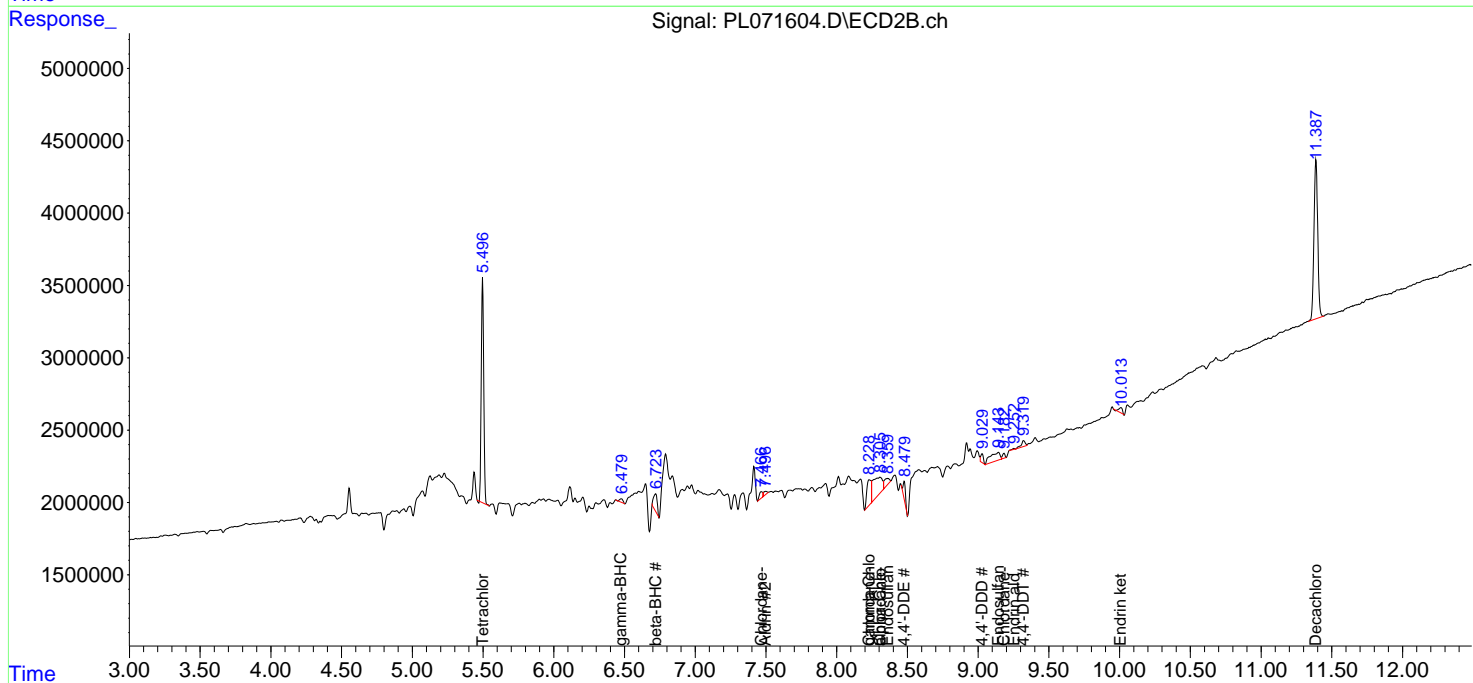
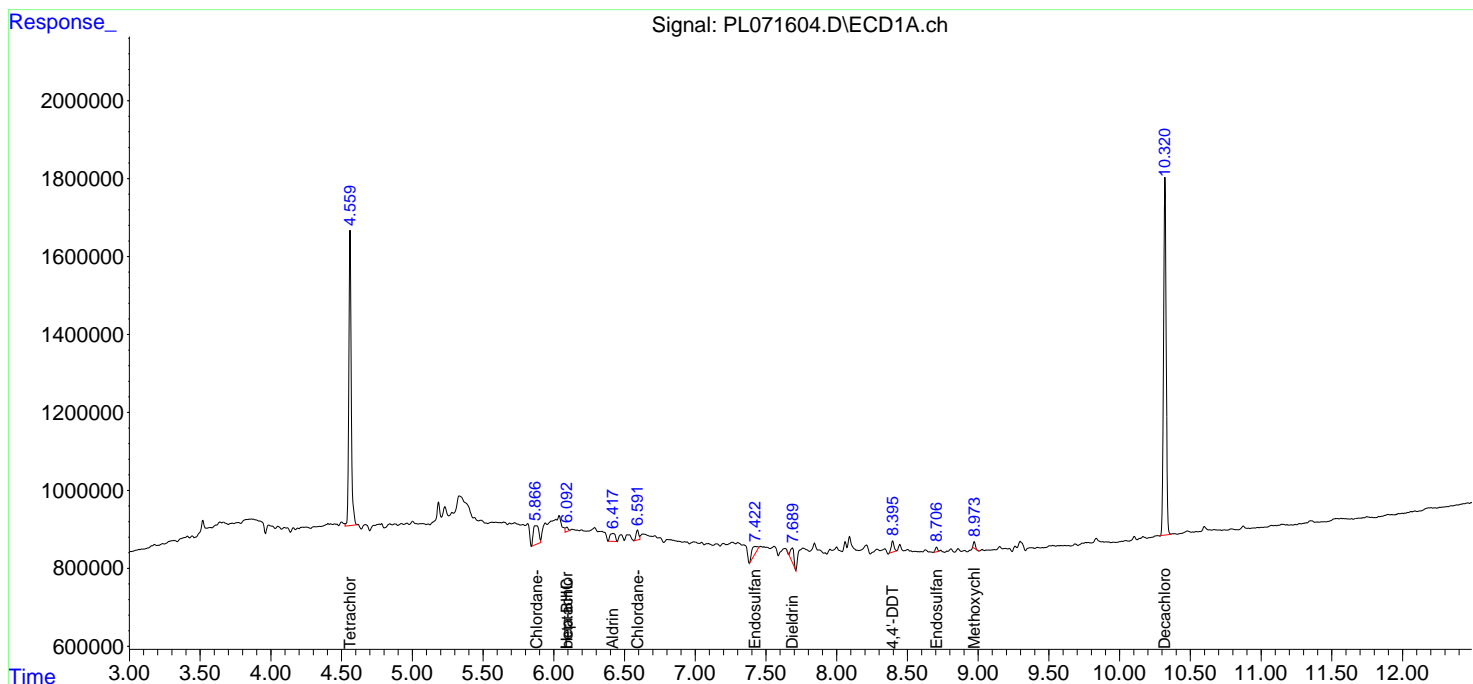
(f)=RT Delta > 1/2 Window (#)=Amounts differ by > 25% (m)=manual int.

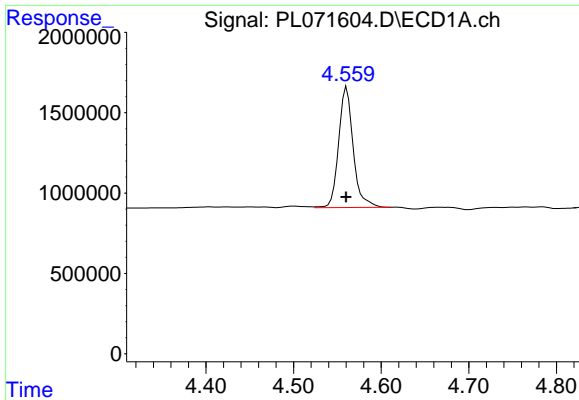
Data Path : Z:\pestpcbsrv\HPCHEM1\ECD\_L\Data\PL122321\  
 Data File : PL071604.D  
 Signal(s) : Signal #1: ECD1A.ch Signal #2: ECD2B.ch  
 Acq On : 23 Dec 2021 15:26  
 Operator : AR\AJ  
 Sample : M5202-03  
 Misc :  
 ALS Vial : 12 Sample Multiplier: 1

Instrument :  
 ECD\_L  
 ClientSampleId :

Integration File signal 1: autoint1.e  
 Integration File signal 2: autoint2.e  
 Quant Time: Dec 24 01:02:11 2021  
 Quant Method : Z:\pestpcbsrv\HPCHEM1\ECD\_L\methods\PL121421.M  
 Quant Title : GC Extractables  
 QLast Update : Tue Dec 14 14:29:34 2021  
 Response via : Initial Calibration  
 Integrator: ChemStation

Volume Inj. : 1 µl  
 Signal #1 Phase : ZB-MR2 Signal #2 Phase: ZB-MR1  
 Signal #1 Info : 30M x 0.32mm x0.2 Signal #2 Info : 30M x 0.32mm x0.5µm

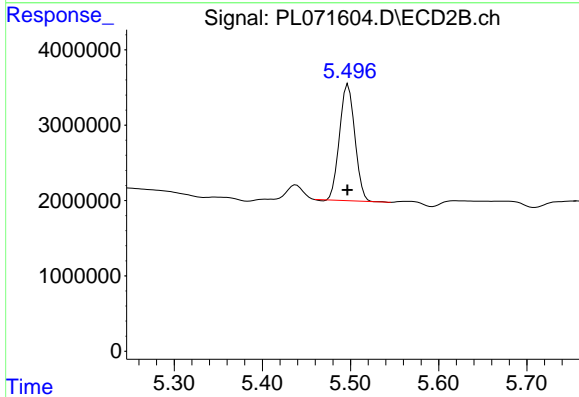




#1 Tetrachloro-m-xylene

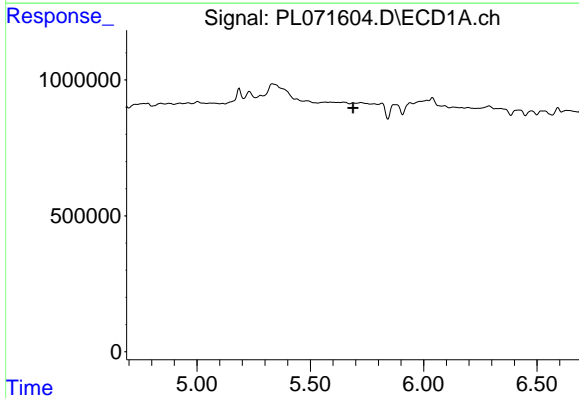
R.T.: 4.561 min  
 Delta R.T.: 0.000 min  
 Response: 8727869  
 Conc: 18.41 ng/ml

Instrument :  
 ECD\_L  
 ClientSampleId :



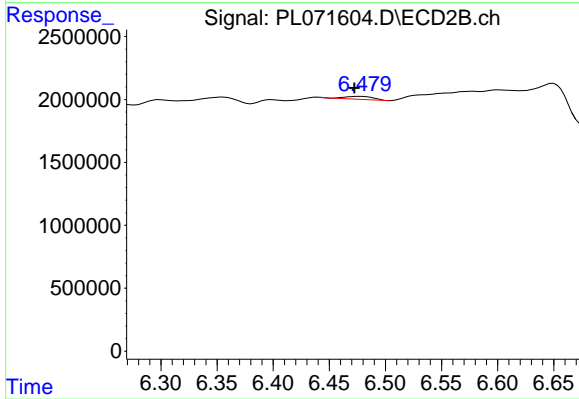
#1 Tetrachloro-m-xylene

R.T.: 5.497 min  
 Delta R.T.: 0.000 min  
 Response: 18670350  
 Conc: 15.67 ng/ml



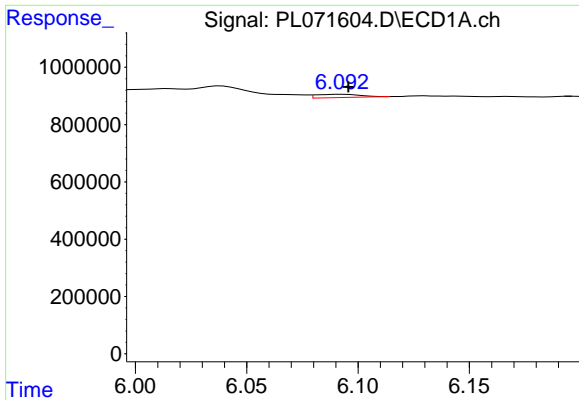
#3 gamma-BHC (Lindane)

R.T.: 0.000 min  
 Exp R.T. : 5.689 min  
 Response: 0  
 Conc: N.D.



#3 gamma-BHC (Lindane)

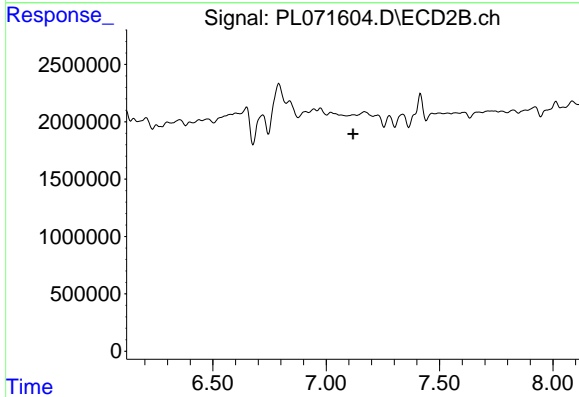
R.T.: 6.477 min  
 Delta R.T.: 0.004 min  
 Response: 421605  
 Conc: 0.26 ng/ml



#4 Heptachlor

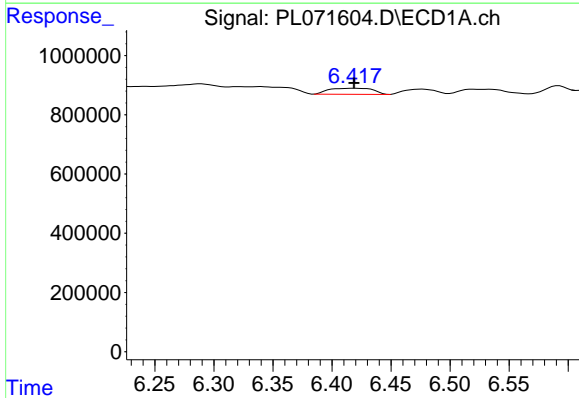
R.T.: 6.093 min  
 Delta R.T.: -0.003 min  
 Response: 155987  
 Conc: 0.23 ng/ml

Instrument :  
 ECD\_L  
 ClientSampleId :



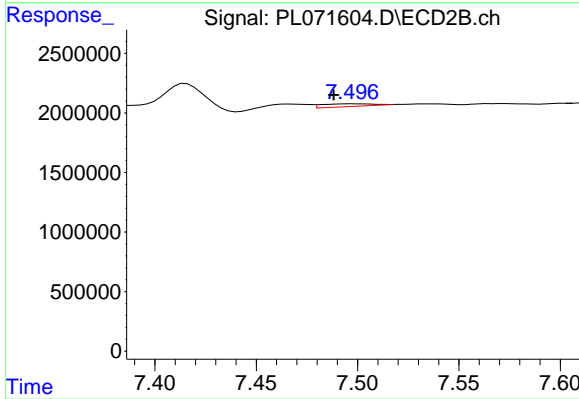
#4 Heptachlor

R.T.: 0.000 min  
 Exp R.T. : 7.119 min  
 Response: 0  
 Conc: N.D.



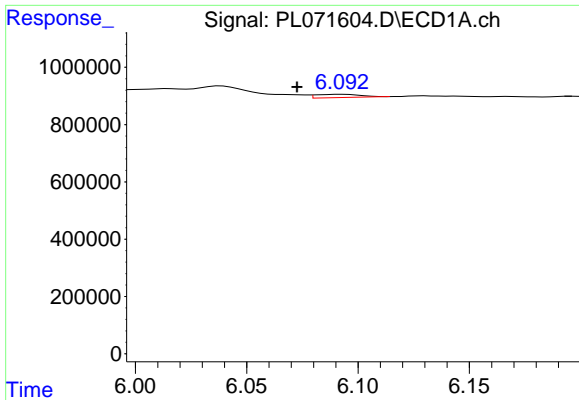
#5 Aldrin

R.T.: 6.419 min  
 Delta R.T.: 0.000 min  
 Response: 532181  
 Conc: 0.86 ng/ml



#5 Aldrin

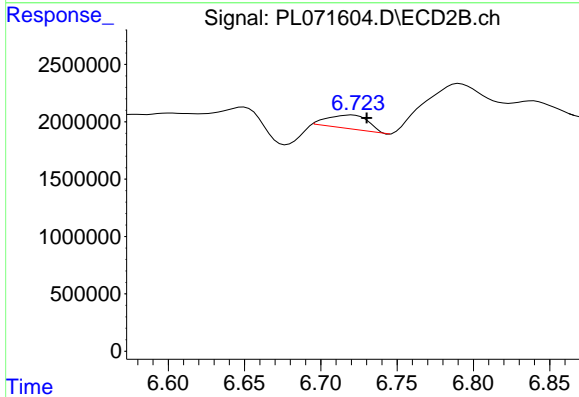
R.T.: 7.498 min  
 Delta R.T.: 0.010 min  
 Response: 410401  
 Conc: 0.28 ng/ml



#6 beta-BHC

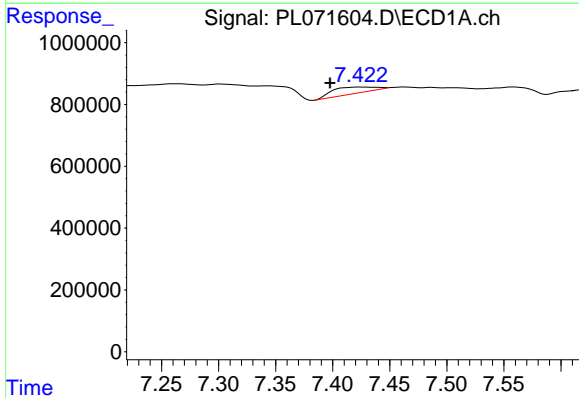
R.T.: 6.093 min  
 Delta R.T.: 0.020 min  
 Response: 155987  
 Conc: 0.55 ng/ml

Instrument :  
 ECD\_L  
 ClientSampleId :



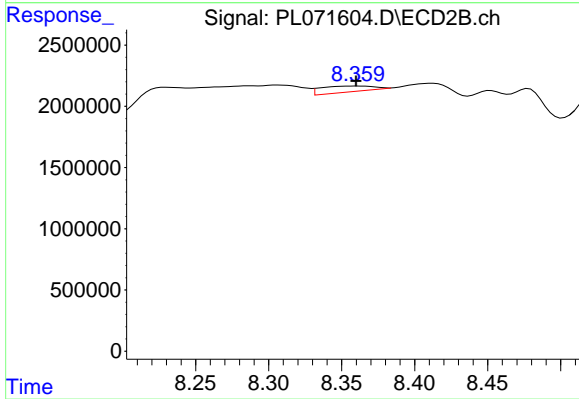
#6 beta-BHC

R.T.: 6.721 min  
 Delta R.T.: -0.009 min  
 Response: 2212737  
 Conc: 2.76 ng/ml



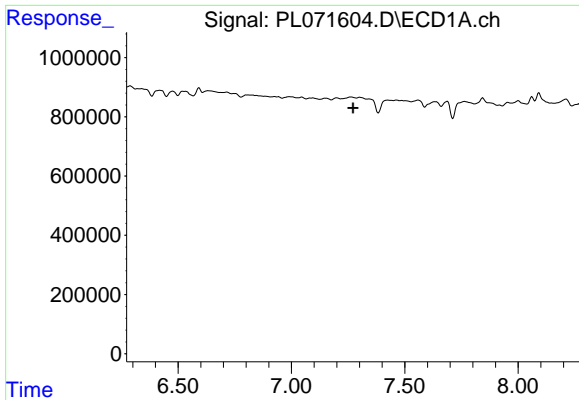
#9 Endosulfan I

R.T.: 7.424 min  
 Delta R.T.: 0.026 min  
 Response: 527151  
 Conc: 0.91 ng/ml



#9 Endosulfan I

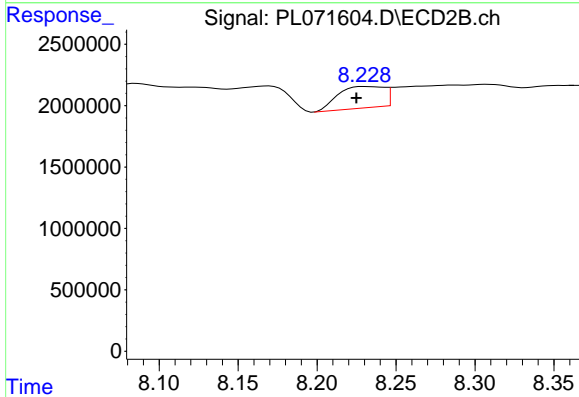
R.T.: 8.362 min  
 Delta R.T.: 0.002 min  
 Response: 1200300  
 Conc: 1.00 ng/ml



#10 gamma-Chlordane

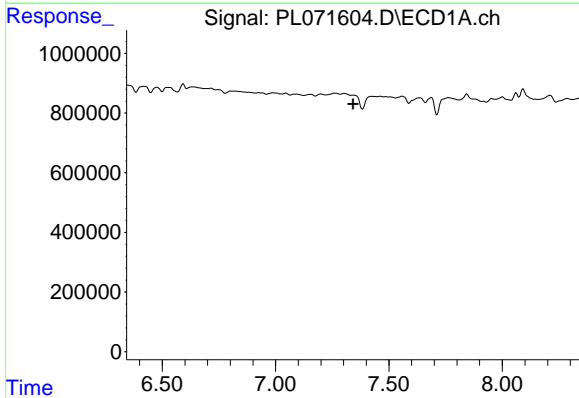
R.T.: 0.000 min  
 Exp R.T.: 7.273 min  
 Response: 0  
 Conc: N.D.

Instrument :  
 ECD\_L  
 ClientSampleId :



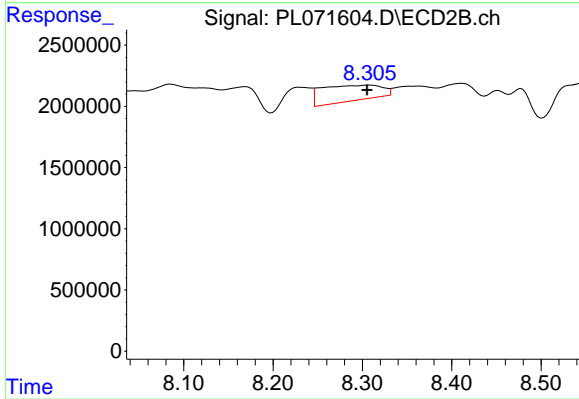
#10 gamma-Chlordane

R.T.: 8.231 min  
 Delta R.T.: 0.006 min  
 Response: 3559293  
 Conc: 2.75 ng/ml



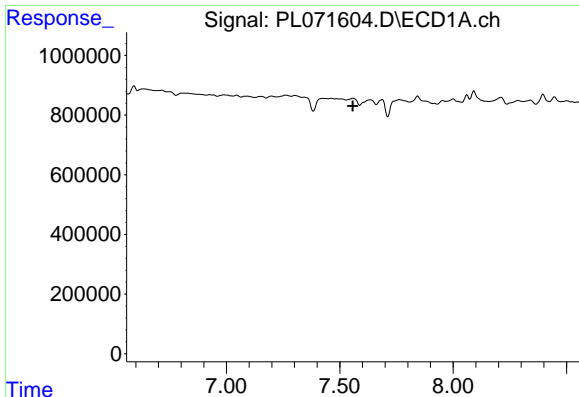
#11 alpha-Chlordane

R.T.: 0.000 min  
 Exp R.T.: 7.342 min  
 Response: 0  
 Conc: N.D.



#11 alpha-Chlordane

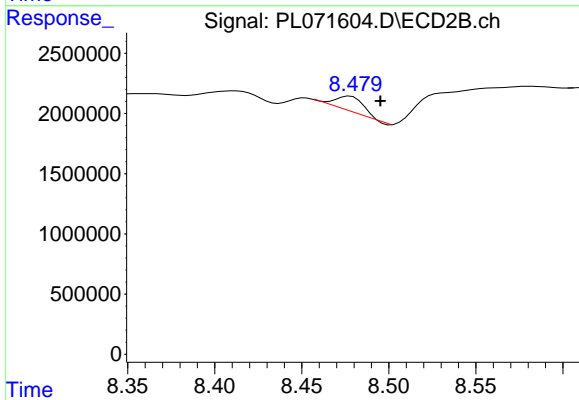
R.T.: 8.307 min  
 Delta R.T.: 0.002 min  
 Response: 5938831  
 Conc: 4.67 ng/ml



#12 4,4'-DDE

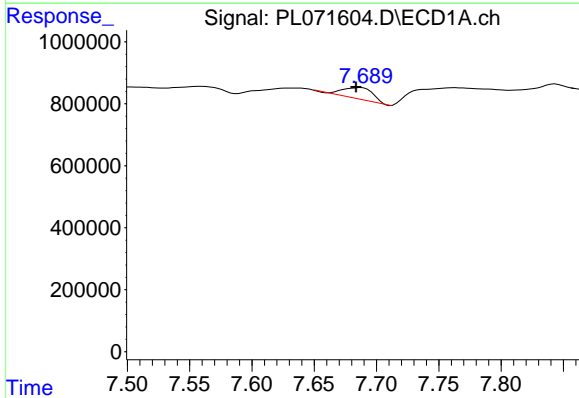
R.T.: 0.000 min  
 Exp R.T.: 7.557 min  
 Response: 0  
 Conc: N.D.

Instrument :  
 ECD\_L  
 ClientSampleId :



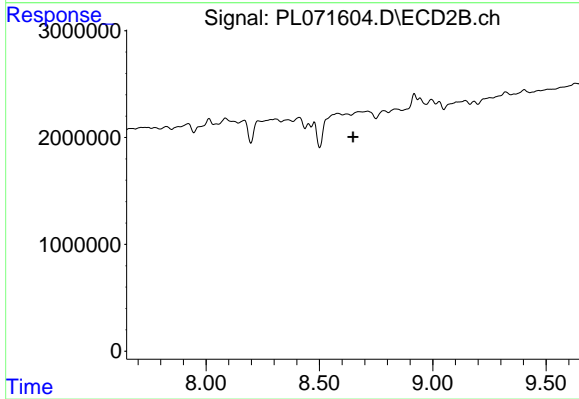
#12 4,4'-DDE

R.T.: 8.478 min  
 Delta R.T.: -0.018 min  
 Response: 1409137  
 Conc: 1.18 ng/ml



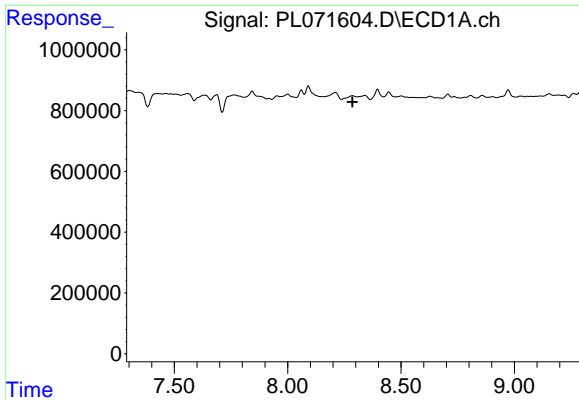
#13 Dieldrin

R.T.: 7.688 min  
 Delta R.T.: 0.004 min  
 Response: 622627  
 Conc: 1.06 ng/ml



#13 Dieldrin

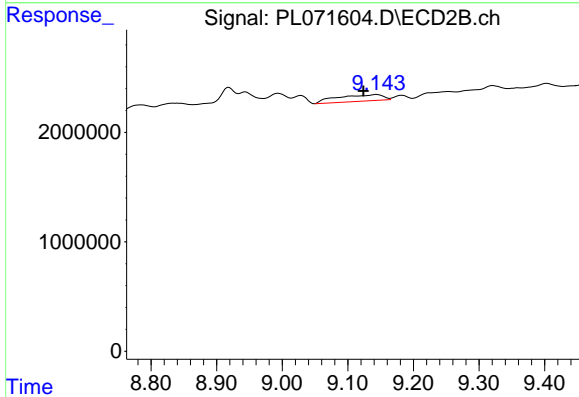
R.T.: 8.673 min  
 Delta R.T.: 0.024 min  
 Response: -19681  
 Conc: N.D.



#15 Endosulfan II

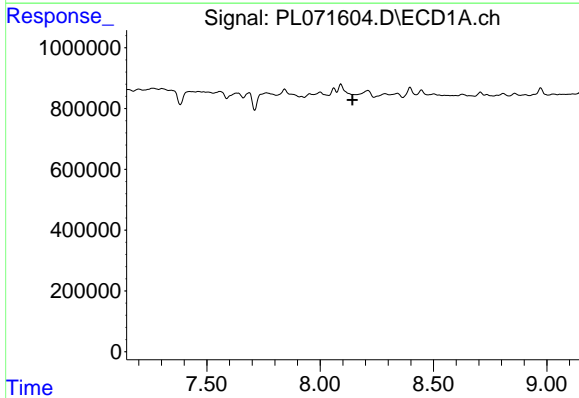
R.T.: 0.000 min  
 Exp R.T.: 8.286 min  
 Response: 0  
 Conc: N.D.

Instrument :  
 ECD\_L  
 ClientSampleId :



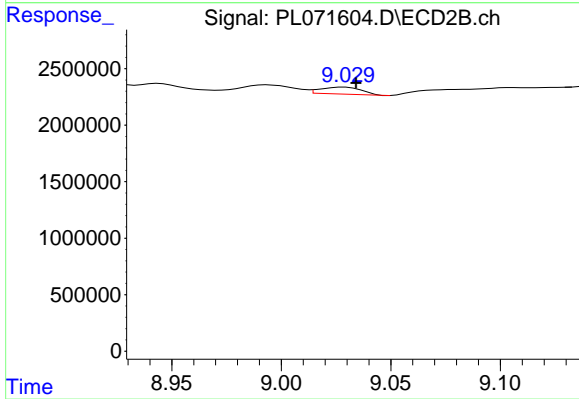
#15 Endosulfan II

R.T.: 9.144 min  
 Delta R.T.: 0.020 min  
 Response: 2824086  
 Conc: 2.80 ng/ml



#16 4,4'-DDD

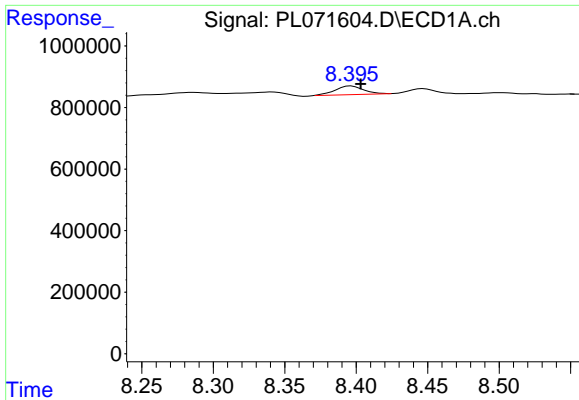
R.T.: 0.000 min  
 Exp R.T.: 8.143 min  
 Response: 0  
 Conc: N.D.



#16 4,4'-DDD

R.T.: 9.029 min  
 Delta R.T.: -0.005 min  
 Response: 803165  
 Conc: 0.91 ng/ml

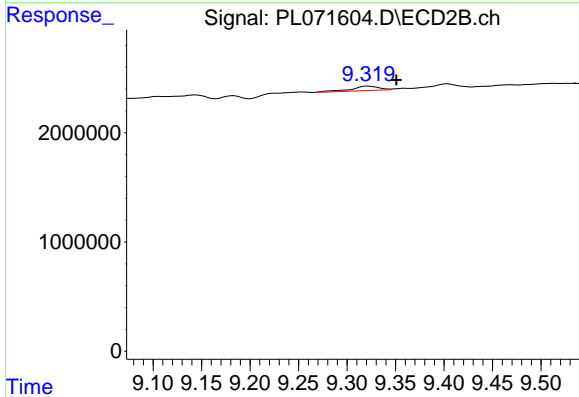




#17 4,4'-DDT

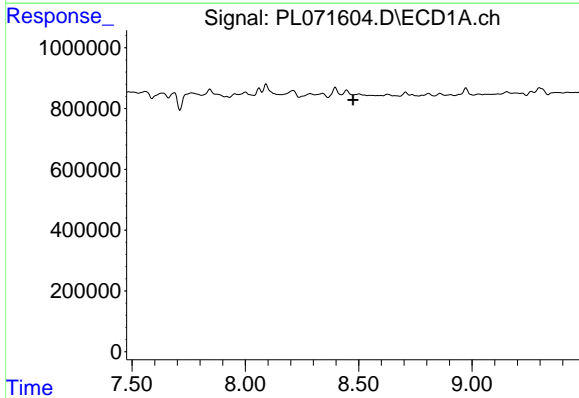
R.T.: 8.396 min  
 Delta R.T.: -0.007 min  
 Response: 387502  
 Conc: 0.76 ng/ml

Instrument :  
 ECD\_L  
 ClientSampleId :



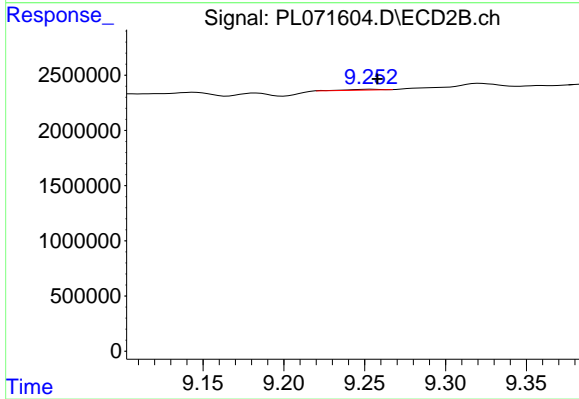
#17 4,4'-DDT

R.T.: 9.321 min  
 Delta R.T.: -0.029 min  
 Response: 813212  
 Conc: 0.82 ng/ml



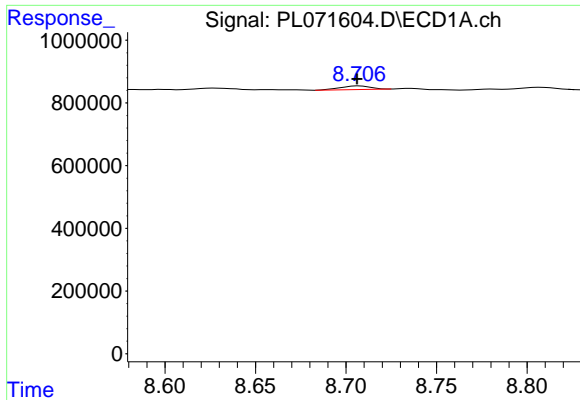
#18 Endrin aldehyde

R.T.: 0.000 min  
 Exp R.T. : 8.476 min  
 Response: 0  
 Conc: N.D.



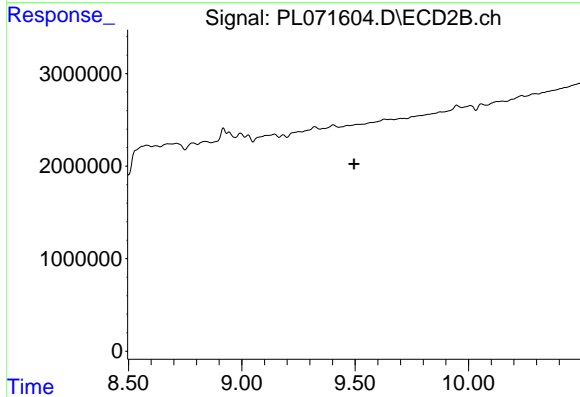
#18 Endrin aldehyde

R.T.: 9.253 min  
 Delta R.T.: -0.005 min  
 Response: 98856  
 Conc: 0.13 ng/ml

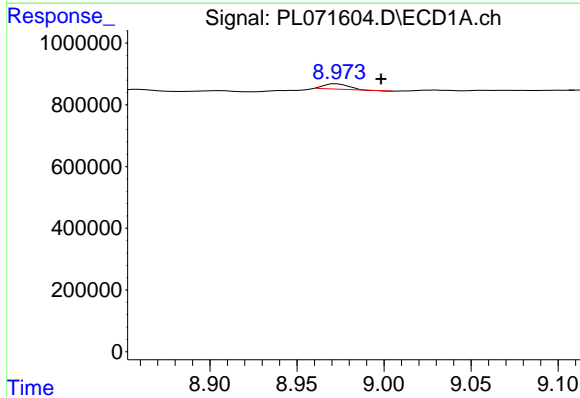


#19 Endosulfan Sulfate  
 R.T.: 8.707 min  
 Delta R.T.: 0.001 min  
 Response: 132524  
 Conc: 0.23 ng/ml

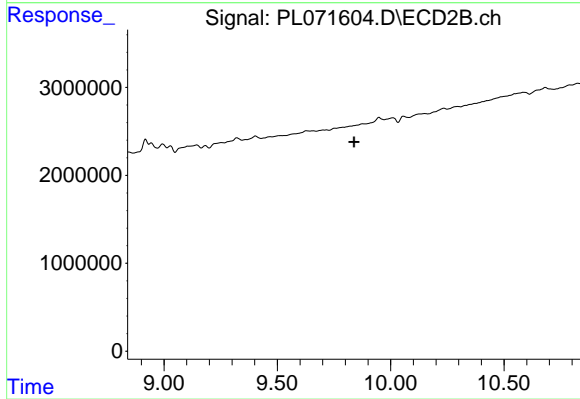
Instrument :  
 ECD\_L  
 ClientSampleId :



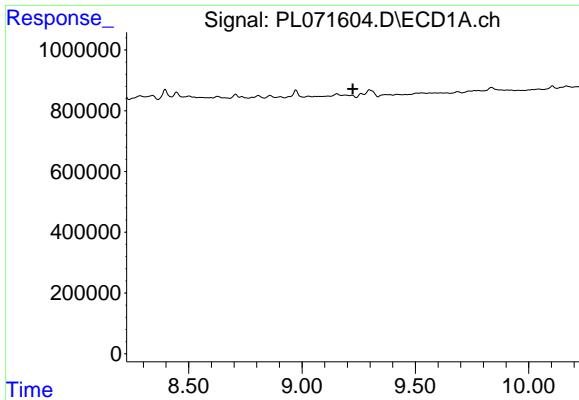
#19 Endosulfan Sulfate  
 R.T.: 0.000 min  
 Exp R.T. : 9.496 min  
 Response: 0  
 Conc: N.D.



#20 Methoxychlor  
 R.T.: 8.973 min  
 Delta R.T.: -0.026 min  
 Response: 167006  
 Conc: 0.52 ng/ml



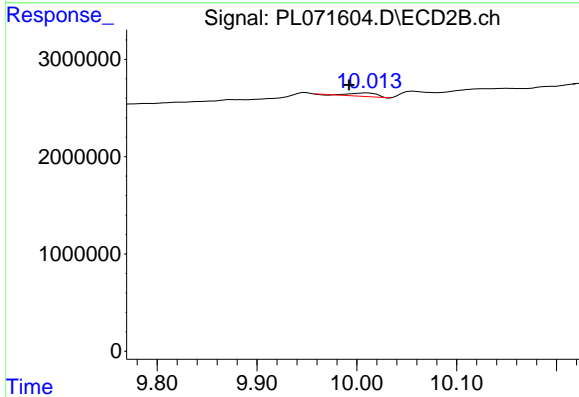
#20 Methoxychlor  
 R.T.: 0.000 min  
 Exp R.T. : 9.839 min  
 Response: 0  
 Conc: N.D.



#21 Endrin ketone

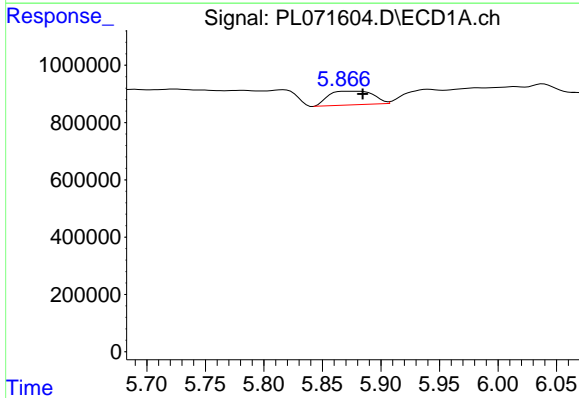
R.T.: 0.000 min  
 Exp R.T.: 9.223 min  
 Response: 0  
 Conc: N.D.

Instrument :  
 ECD\_L  
 ClientSampleId :



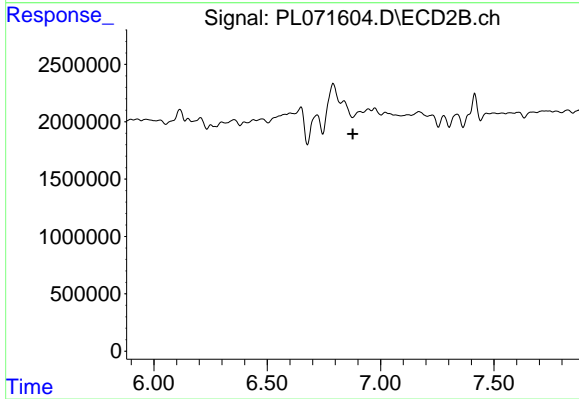
#21 Endrin ketone

R.T.: 10.009 min  
 Delta R.T.: 0.017 min  
 Response: 561349  
 Conc: 0.53 ng/ml



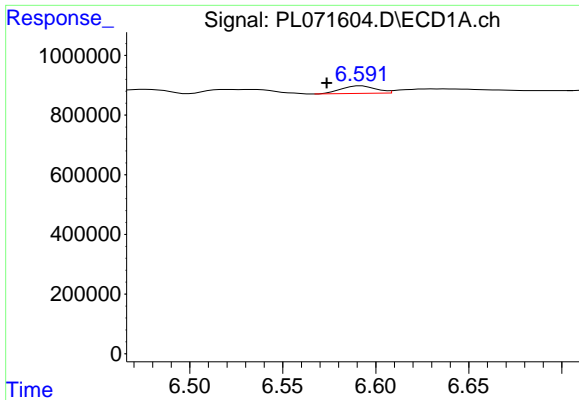
#23 Chlordane-1

R.T.: 5.881 min  
 Delta R.T.: -0.004 min  
 Response: 1277880  
 Conc: 75.79 ng/ml



#23 Chlordane-1

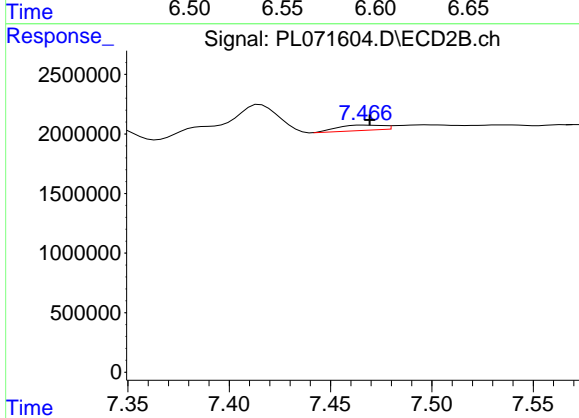
R.T.: 0.000 min  
 Exp R.T.: 6.877 min  
 Response: 0  
 Conc: N.D.



#24 Chlordane-2

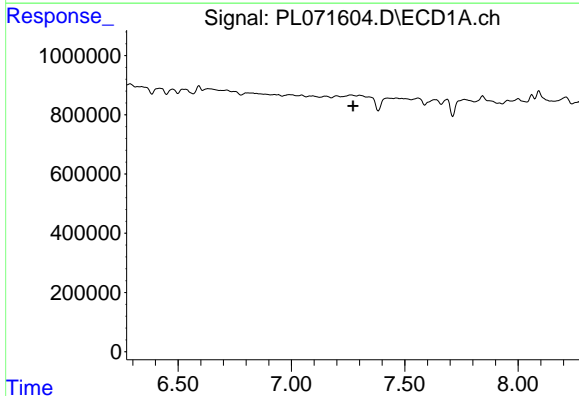
R.T.: 6.592 min  
 Delta R.T.: 0.019 min  
 Response: 324950  
 Conc: 15.03 ng/ml

Instrument :  
 ECD\_L  
 ClientSampleId :



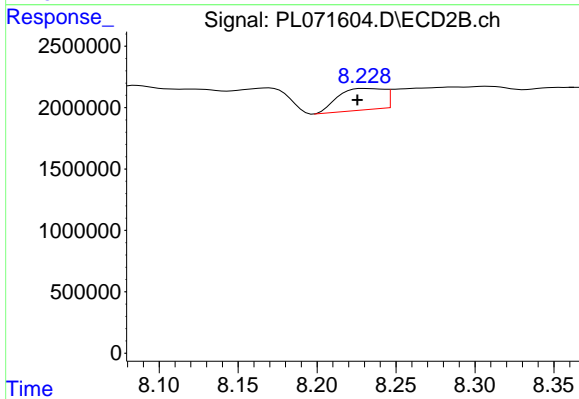
#24 Chlordane-2

R.T.: 7.467 min  
 Delta R.T.: -0.002 min  
 Response: 705040  
 Conc: 14.95 ng/ml



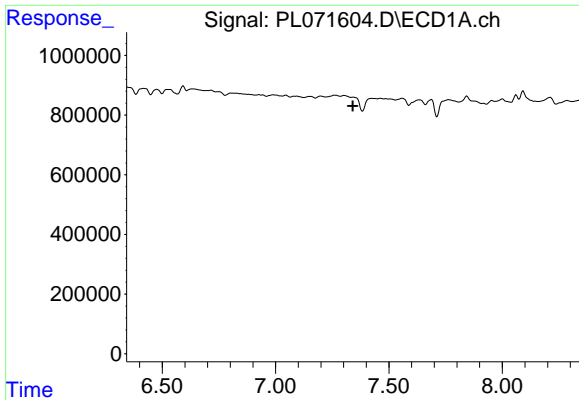
#25 Chlordane-3

R.T.: 0.000 min  
 Exp R.T. : 7.272 min  
 Response: 0  
 Conc: N.D.



#25 Chlordane-3

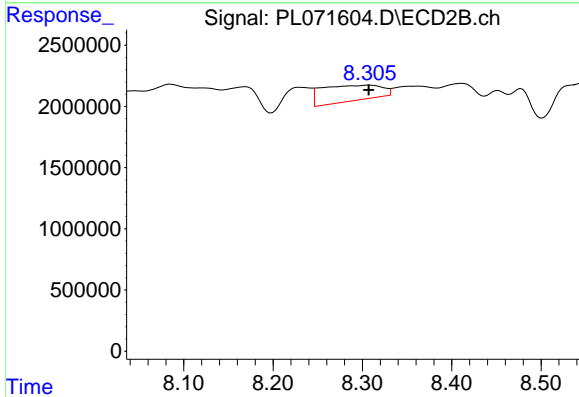
R.T.: 8.231 min  
 Delta R.T.: 0.005 min  
 Response: 3559293  
 Conc: 20.33 ng/ml



#26 Chlordane-4

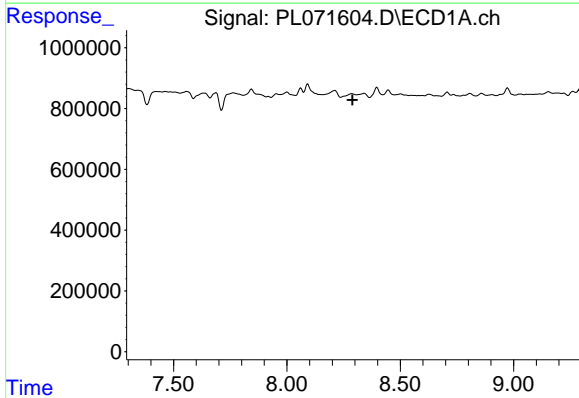
R.T.: 0.000 min  
 Exp R.T.: 7.340 min  
 Response: 0  
 Conc: N.D.

Instrument :  
 ECD\_L  
 ClientSampleId :



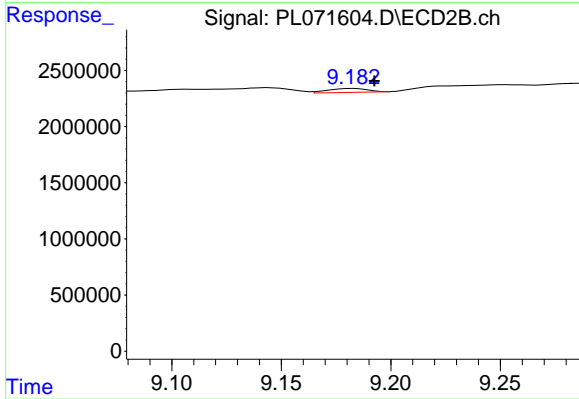
#26 Chlordane-4

R.T.: 8.307 min  
 Delta R.T.: 0.000 min  
 Response: 5938831  
 Conc: 28.29 ng/ml



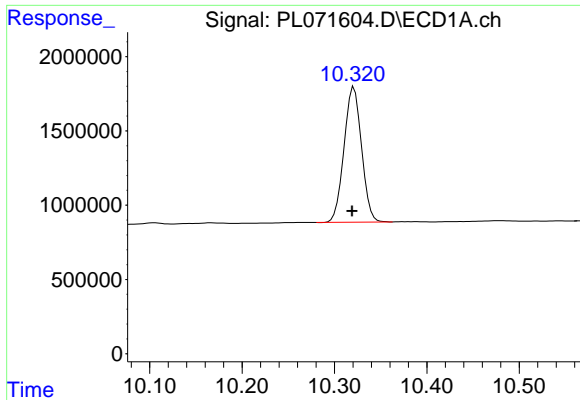
#27 Chlordane-5

R.T.: 0.000 min  
 Exp R.T.: 8.290 min  
 Response: 0  
 Conc: N.D.



#27 Chlordane-5

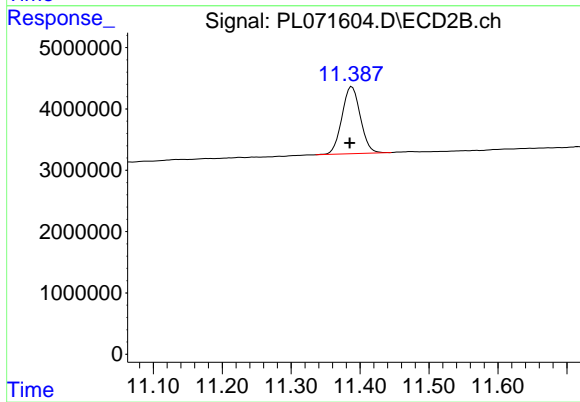
R.T.: 9.183 min  
 Delta R.T.: -0.010 min  
 Response: 425252  
 Conc: 12.10 ng/ml



#28 Decachlorobiphenyl

R.T.: 10.321 min  
Delta R.T.: 0.002 min  
Response: 11992849  
Conc: 18.05 ng/ml

Instrument :  
ECD\_L  
ClientSampleId :



#28 Decachlorobiphenyl

R.T.: 11.388 min  
Delta R.T.: 0.003 min  
Response: 20345283  
Conc: 18.73 ng/ml