

Data Path : Z:\pestpcbsrv\HPCHEM1\ECD_L\Data\PL122321\
 Data File : PL071615.D
 Signal(s) : Signal #1: ECD1A.ch Signal #2: ECD2B.ch
 Acq On : 24 Dec 2021 00:49
 Operator : AR\AJ
 Sample : M5210-05
 Misc :
 ALS Vial : 18 Sample Multiplier: 1

Instrument :
 ECD_L
 ClientSampleId :

Integration File signal 1: autoint1.e
 Integration File signal 2: autoint2.e
 Quant Time: Dec 24 02:50:43 2021
 Quant Method : Z:\pestpcbsrv\HPCHEM1\ECD_L\methods\PL121421.M
 Quant Title : GC Extractables
 QLast Update : Tue Dec 14 14:29:34 2021
 Response via : Initial Calibration
 Integrator: ChemStation

Volume Inj. : 1 µl
 Signal #1 Phase : ZB-MR2 Signal #2 Phase: ZB-MR1
 Signal #1 Info : 30M x 0.32mm x0.2 Signal #2 Info : 30M x 0.32mm x0.5µm

Compound	RT#1	RT#2	Resp#1	Resp#2	ng/ml	ng/ml

System Monitoring Compounds						
1) SA Tetrachlo...	4.559	5.496	12348263	33607684	26.051	28.211
2) SA Decachlor...	10.320	11.387	19802178	36212818	29.805	33.330
Target Compounds						
3) MA gamma-BHC...	5.682	0.000	287814	0	0.440	N.D. #
5) MB Aldrin	0.000	7.483	0	131538	N.D.	0.090 #
7) B delta-BHC	0.000	7.021f	0	253260	N.D.	0.166 #
9) A Endosulfan I	7.424f	0.000	1319522	0	2.273	N.D. #
10) B gamma-Chl...	0.000	8.222	0	828928	N.D.	0.641 #
11) B alpha-Chl...	0.000	8.308	0	332491	N.D.	0.262 #
13) MA Dieldrin	7.695	0.000	412413	0	0.704	N.D. #
14) MA Endrin	7.998f	8.917f	545126	-114889	0.995	N.D. #
15) B Endosulfa...	8.295	9.148f	173100	466255	0.318	0.462 #
16) A 4,4'-DDD	0.000	9.032	0	636456	N.D.	0.721 #
17) MA 4,4'-DDT	8.401	9.356	201593	530080	0.395	0.536 #
18) B Endrin al...	0.000	9.268	0	17024	N.D.	0.023 #
19) B Endosulfa...	0.000	9.516f	0	69053	N.D.	0.070 #
20) A Methoxychlor	9.021f	9.848	623190	-59519	1.924	N.D. #
23) Chlordane-1	0.000	6.897f	0	445951	N.D.	9.702 #
24) Chlordane-2	0.000	7.483	0	131538	N.D.	2.789 #
25) Chlordane-3	0.000	8.222	0	828928	N.D.	4.735 #
26) Chlordane-4	0.000	8.308	0	332491	N.D.	1.584 #
27) Chlordane-5	8.295	9.177f	173100	176595	8.094	5.026 #

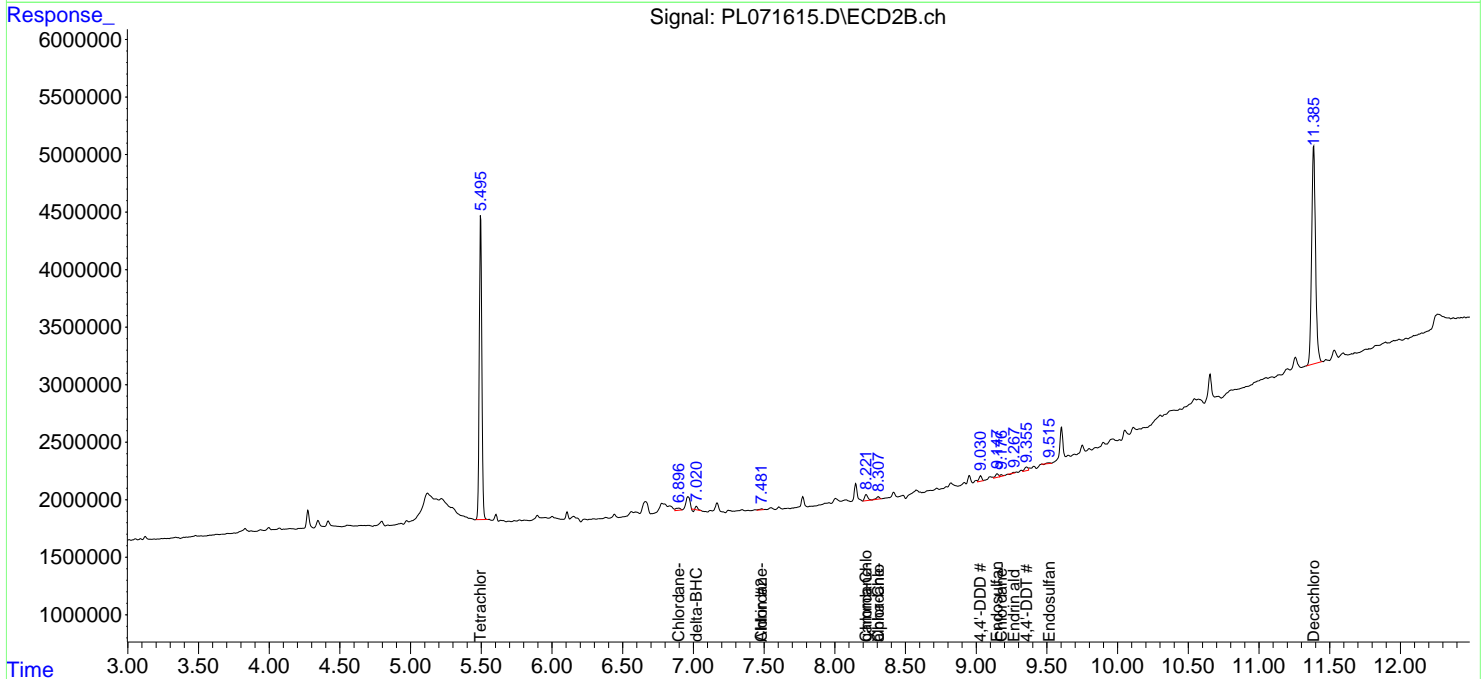
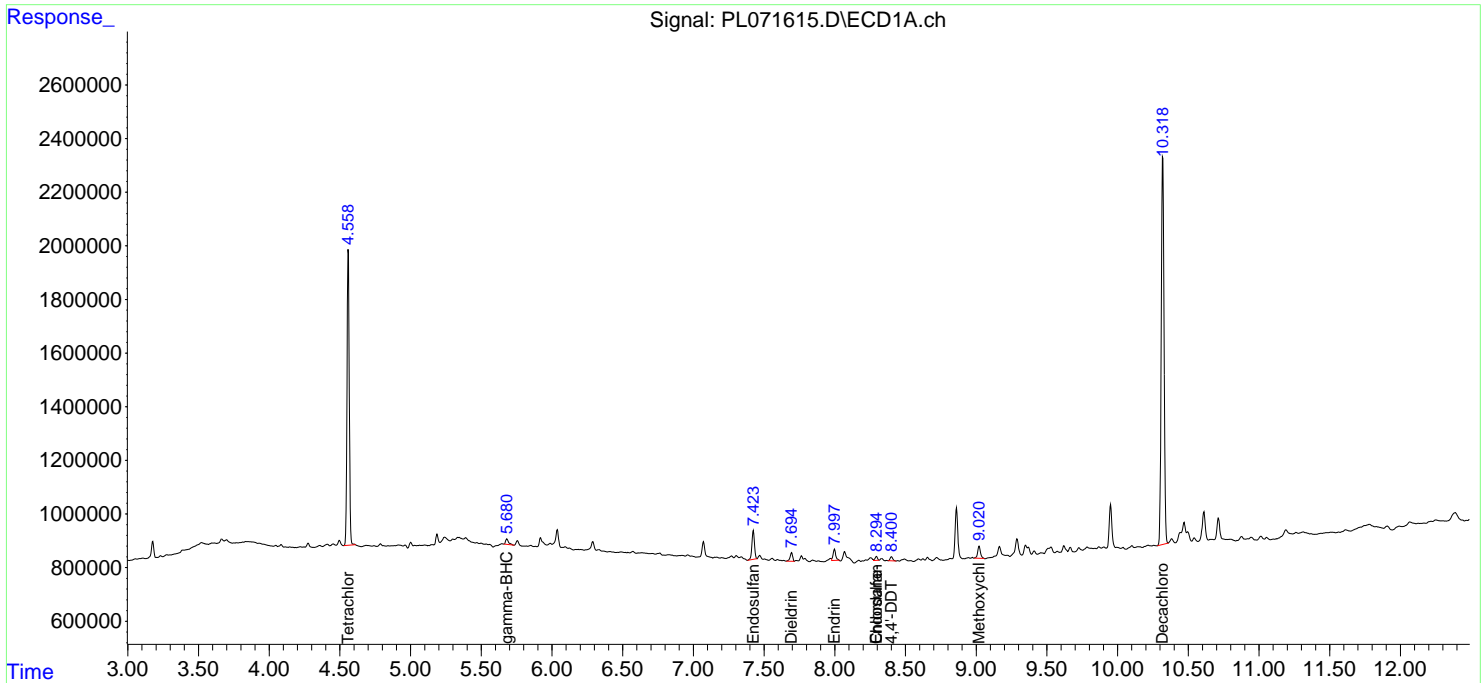
(f)=RT Delta > 1/2 Window (#)=Amounts differ by > 25% (m)=manual int.

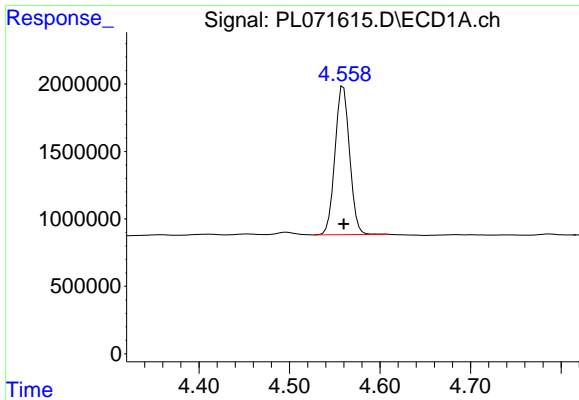
Data Path : Z:\pestpcbsrv\HPCHEM1\ECD_L\Data\PL122321\
 Data File : PL071615.D
 Signal(s) : Signal #1: ECD1A.ch Signal #2: ECD2B.ch
 Acq On : 24 Dec 2021 00:49
 Operator : AR\AJ
 Sample : M5210-05
 Misc :
 ALS Vial : 18 Sample Multiplier: 1

Instrument :
 ECD_L
 ClientSampleId :

Integration File signal 1: autoint1.e
 Integration File signal 2: autoint2.e
 Quant Time: Dec 24 02:50:43 2021
 Quant Method : Z:\pestpcbsrv\HPCHEM1\ECD_L\methods\PL121421.M
 Quant Title : GC Extractables
 QLast Update : Tue Dec 14 14:29:34 2021
 Response via : Initial Calibration
 Integrator: ChemStation

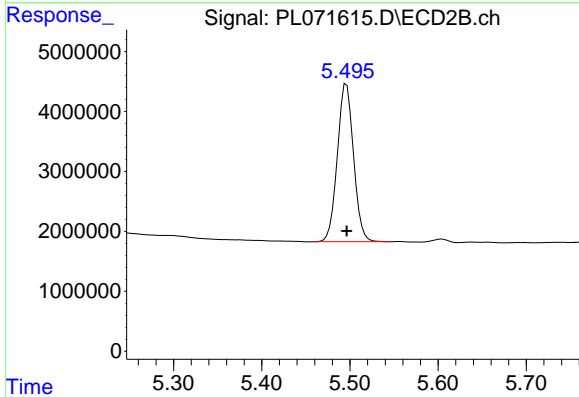
Volume Inj. : 1 µl
 Signal #1 Phase : ZB-MR2 Signal #2 Phase: ZB-MR1
 Signal #1 Info : 30M x 0.32mm x0.2 Signal #2 Info : 30M x 0.32mm x0.5µm



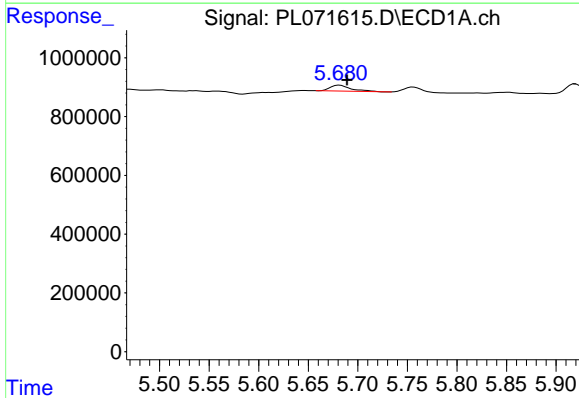


#1 Tetrachloro-m-xylene
 R.T.: 4.559 min
 Delta R.T.: 0.000 min
 Response: 12348263
 Conc: 26.05 ng/ml

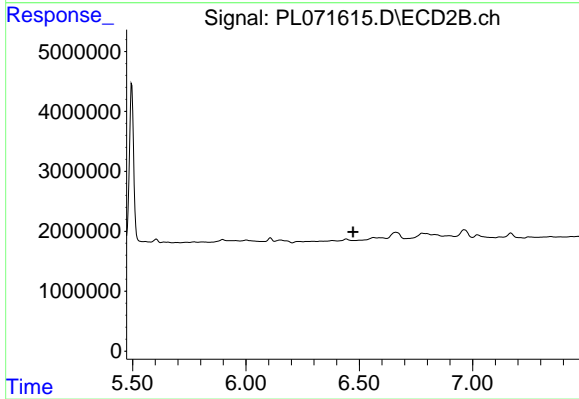
Instrument :
 ECD_L
 ClientSampleId :



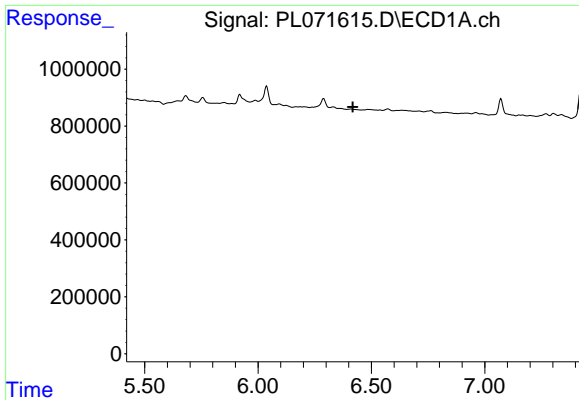
#1 Tetrachloro-m-xylene
 R.T.: 5.496 min
 Delta R.T.: 0.000 min
 Response: 33607684
 Conc: 28.21 ng/ml



#3 gamma-BHC (Lindane)
 R.T.: 5.682 min
 Delta R.T.: -0.007 min
 Response: 287814
 Conc: 0.44 ng/ml

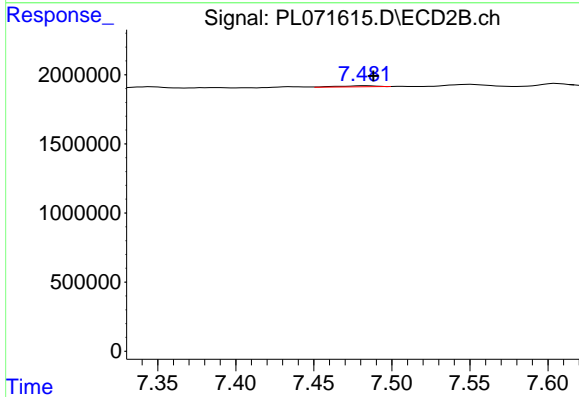


#3 gamma-BHC (Lindane)
 R.T.: 0.000 min
 Exp R.T. : 6.472 min
 Response: 0
 Conc: N.D.

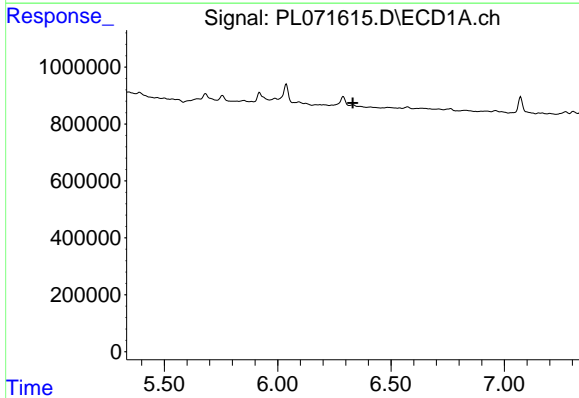


#5 Aldrin
 R.T.: 0.000 min
 Exp R.T.: 6.419 min
 Response: 0
 Conc: N.D.

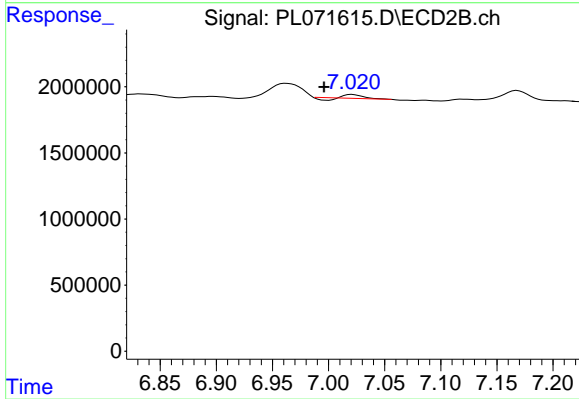
Instrument :
 ECD_L
 ClientSampleId :



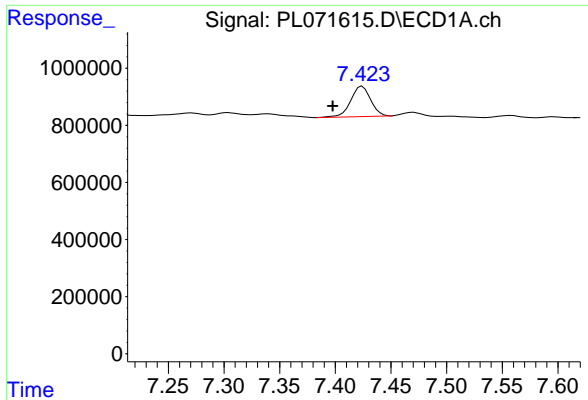
#5 Aldrin
 R.T.: 7.483 min
 Delta R.T.: -0.006 min
 Response: 131538
 Conc: 0.09 ng/ml



#7 delta-BHC
 R.T.: 0.000 min
 Exp R.T.: 6.331 min
 Response: 0
 Conc: N.D.

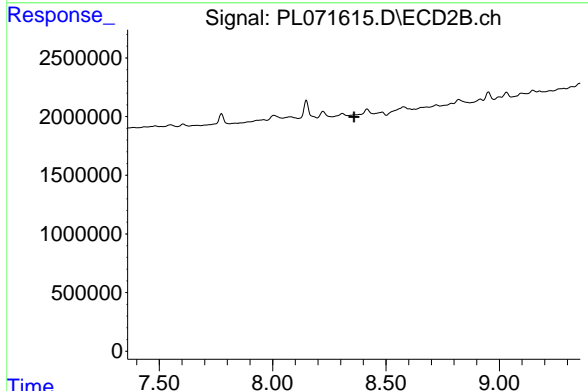


#7 delta-BHC
 R.T.: 7.021 min
 Delta R.T.: 0.025 min
 Response: 253260
 Conc: 0.17 ng/ml

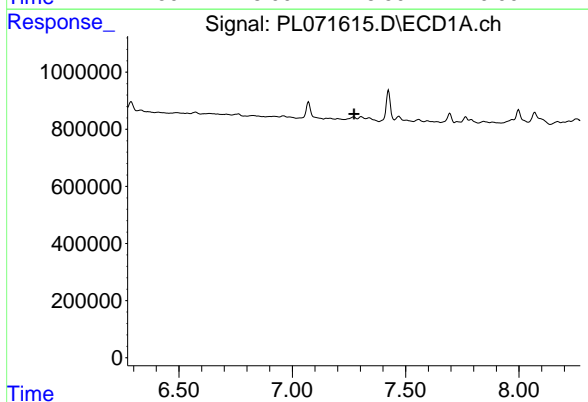


#9 Endosulfan I
 R.T.: 7.424 min
 Delta R.T.: 0.027 min
 Response: 1319522
 Conc: 2.27 ng/ml

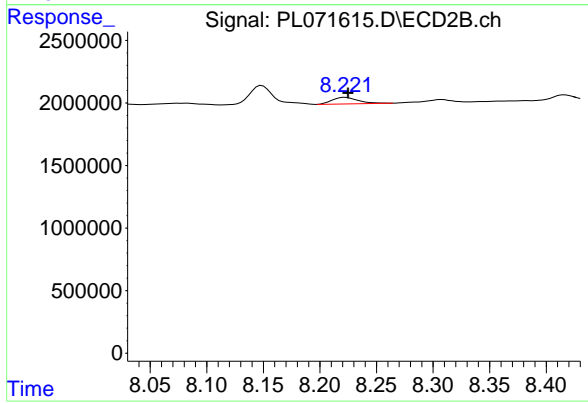
Instrument :
 ECD_L
 ClientSampleId :



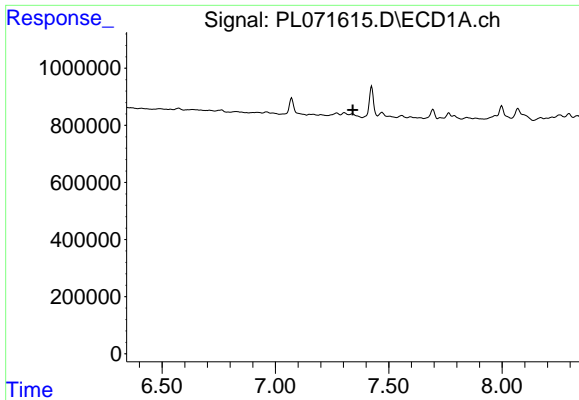
#9 Endosulfan I
 R.T.: 0.000 min
 Exp R.T. : 8.360 min
 Response: 0
 Conc: N.D.



#10 gamma-Chlordane
 R.T.: 0.000 min
 Exp R.T. : 7.273 min
 Response: 0
 Conc: N.D.



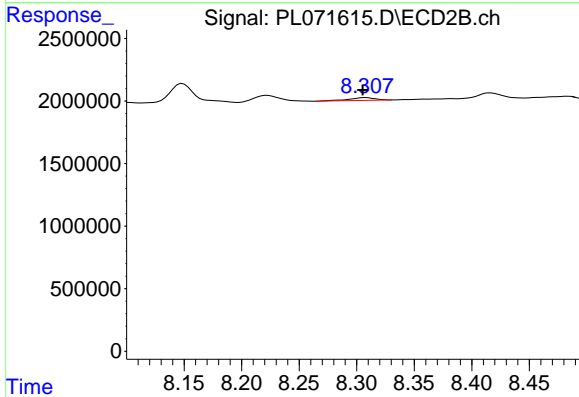
#10 gamma-Chlordane
 R.T.: 8.222 min
 Delta R.T.: -0.003 min
 Response: 828928
 Conc: 0.64 ng/ml



#11 alpha-Chlordane

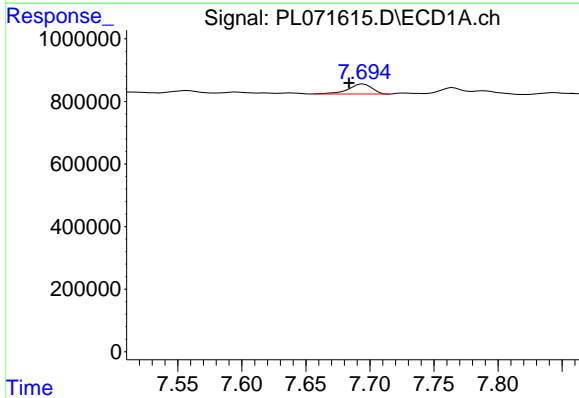
R.T.: 0.000 min
 Exp R.T.: 7.342 min
 Response: 0
 Conc: N.D.

Instrument :
 ECD_L
 ClientSampleId :



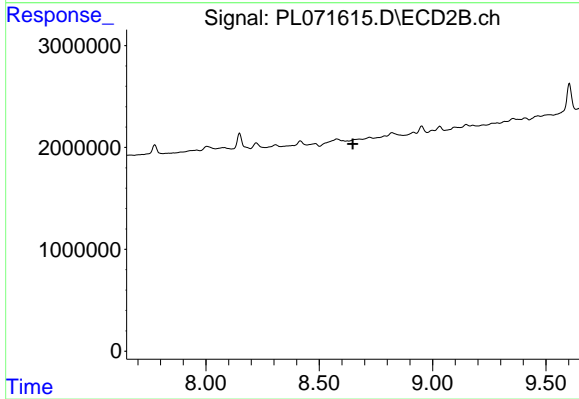
#11 alpha-Chlordane

R.T.: 8.308 min
 Delta R.T.: 0.003 min
 Response: 332491
 Conc: 0.26 ng/ml



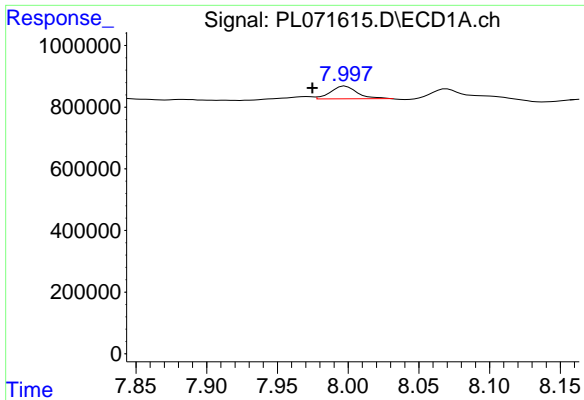
#13 Dieldrin

R.T.: 7.695 min
 Delta R.T.: 0.011 min
 Response: 412413
 Conc: 0.70 ng/ml



#13 Dieldrin

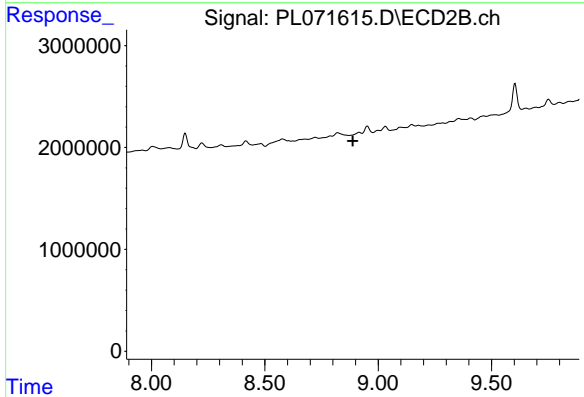
R.T.: 0.000 min
 Exp R.T.: 8.649 min
 Response: 0
 Conc: N.D.



#14 Endrin

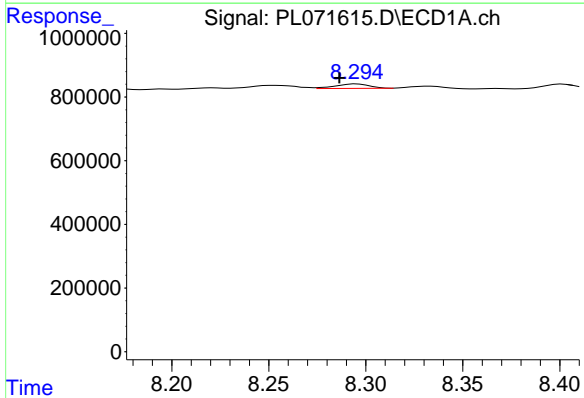
R.T.: 7.998 min
 Delta R.T.: 0.023 min
 Response: 545126
 Conc: 1.00 ng/ml

Instrument :
 ECD_L
 ClientSampleId :



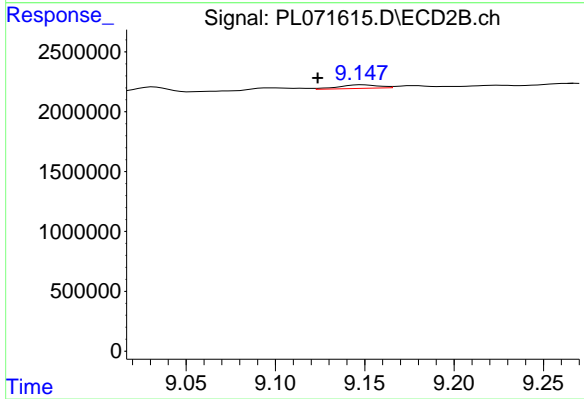
#14 Endrin

R.T.: 8.917 min
 Delta R.T.: 0.029 min
 Response: -114889
 Conc: N.D.



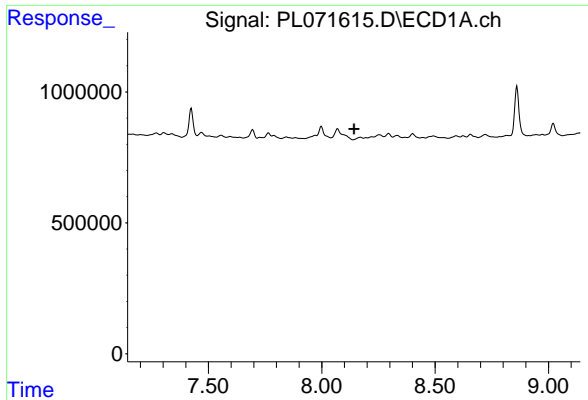
#15 Endosulfan II

R.T.: 8.295 min
 Delta R.T.: 0.009 min
 Response: 173100
 Conc: 0.32 ng/ml



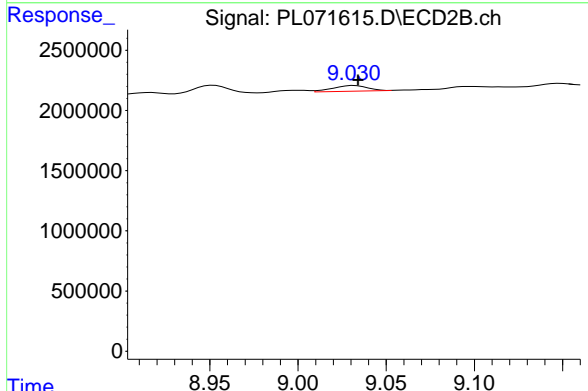
#15 Endosulfan II

R.T.: 9.148 min
 Delta R.T.: 0.025 min
 Response: 466255
 Conc: 0.46 ng/ml

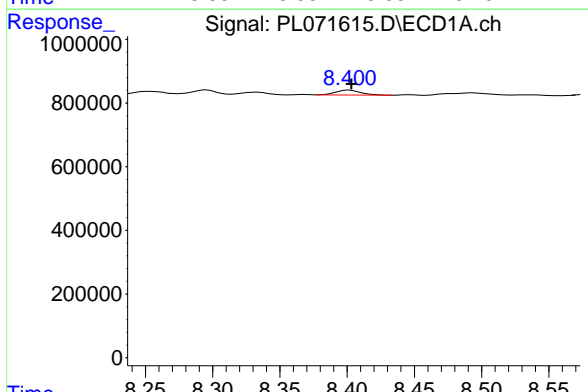


#16 4,4'-DDD
 R.T.: 0.000 min
 Exp R.T.: 8.143 min
 Response: 0
 Conc: N.D.

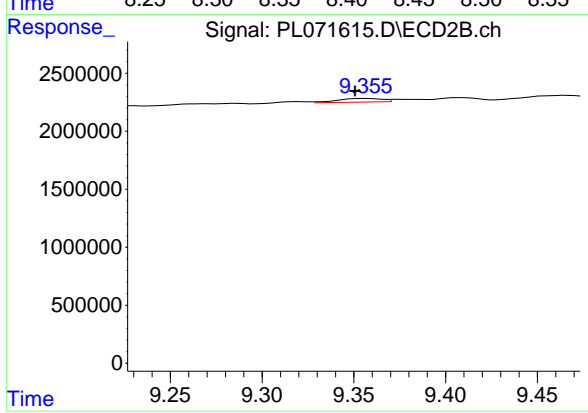
Instrument :
 ECD_L
 ClientSampleId :



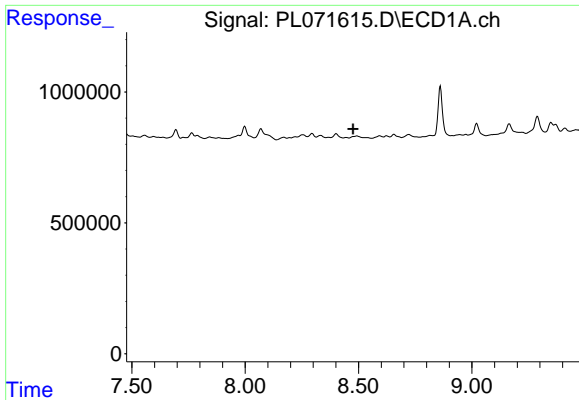
#16 4,4'-DDD
 R.T.: 9.032 min
 Delta R.T.: -0.002 min
 Response: 636456
 Conc: 0.72 ng/ml



#17 4,4'-DDT
 R.T.: 8.401 min
 Delta R.T.: -0.002 min
 Response: 201593
 Conc: 0.40 ng/ml



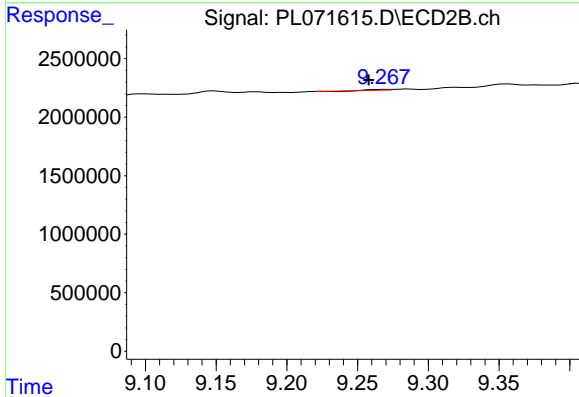
#17 4,4'-DDT
 R.T.: 9.356 min
 Delta R.T.: 0.006 min
 Response: 530080
 Conc: 0.54 ng/ml



#18 Endrin aldehyde

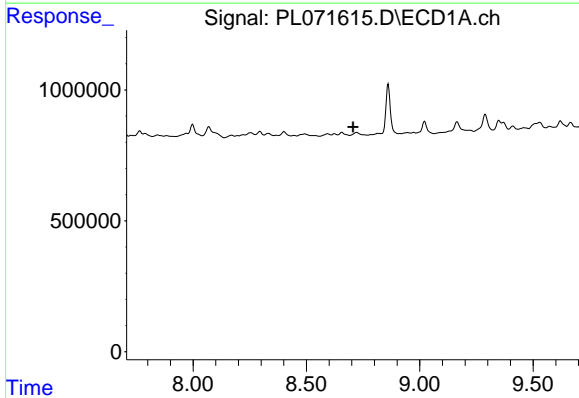
R.T.: 0.000 min
 Exp R.T. : 8.476 min
 Response: 0
 Conc: N.D.

Instrument :
 ECD_L
 ClientSampleId :



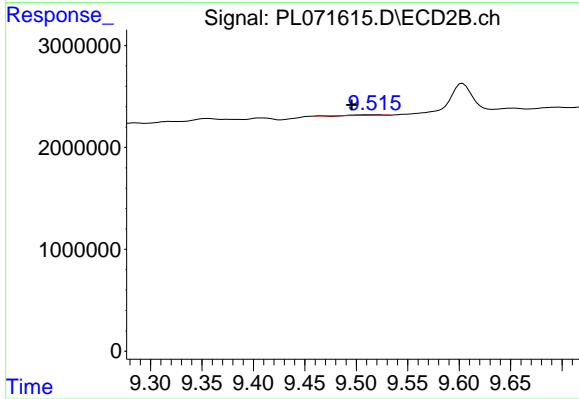
#18 Endrin aldehyde

R.T.: 9.268 min
 Delta R.T.: 0.010 min
 Response: 17024
 Conc: 0.02 ng/ml



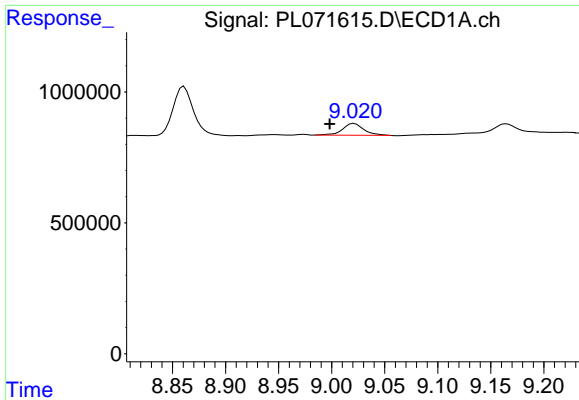
#19 Endosulfan Sulfate

R.T.: 0.000 min
 Exp R.T. : 8.706 min
 Response: 0
 Conc: N.D.



#19 Endosulfan Sulfate

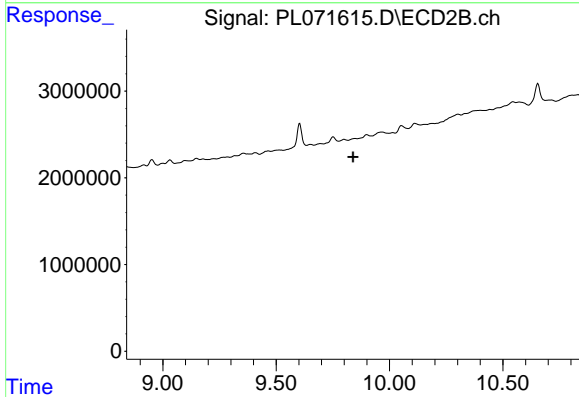
R.T.: 9.516 min
 Delta R.T.: 0.020 min
 Response: 69053
 Conc: 0.07 ng/ml



#20 Methoxychlor

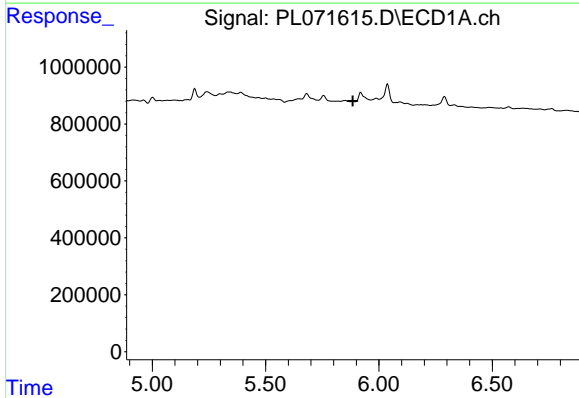
R.T.: 9.021 min
 Delta R.T.: 0.023 min
 Response: 623190
 Conc: 1.92 ng/ml

Instrument :
 ECD_L
 ClientSampleId :



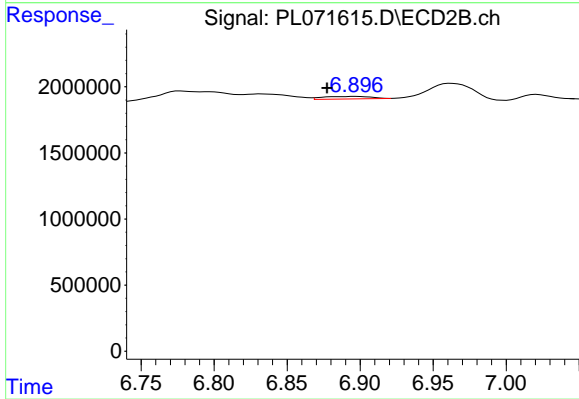
#20 Methoxychlor

R.T.: 9.848 min
 Delta R.T.: 0.009 min
 Response: -59519
 Conc: N.D.



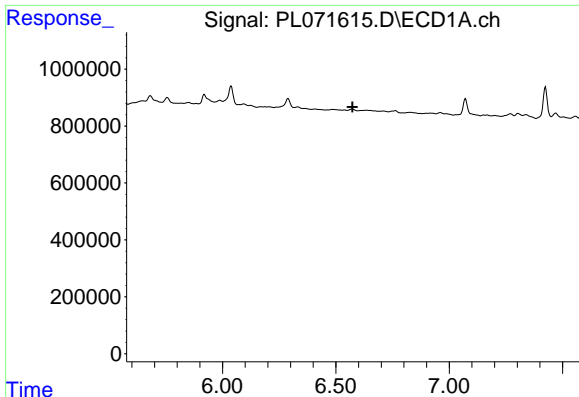
#23 Chlordane-1

R.T.: 0.000 min
 Exp R.T. : 5.884 min
 Response: 0
 Conc: N.D.



#23 Chlordane-1

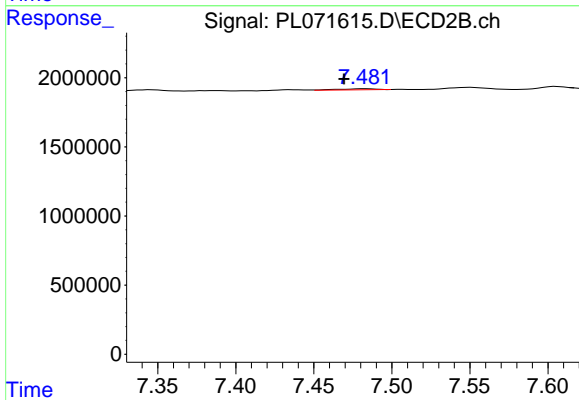
R.T.: 6.897 min
 Delta R.T.: 0.020 min
 Response: 445951
 Conc: 9.70 ng/ml



#24 Chlordane-2

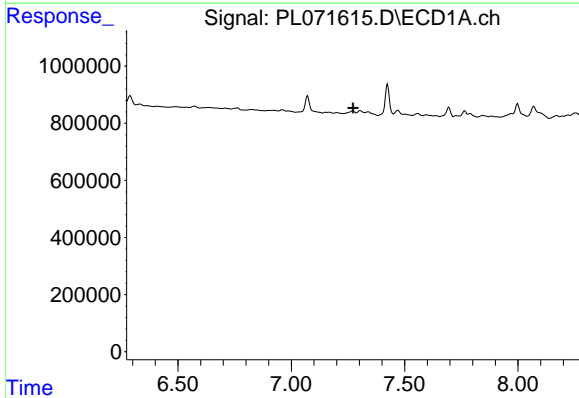
R.T.: 0.000 min
 Exp R.T. : 6.574 min
 Response: 0
 Conc: N.D.

Instrument :
 ECD_L
 ClientSampleId :



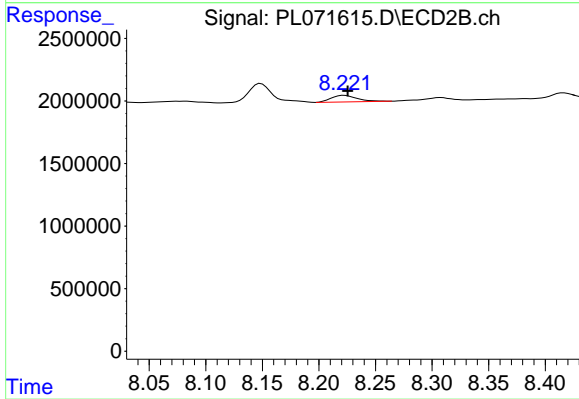
#24 Chlordane-2

R.T.: 7.483 min
 Delta R.T.: 0.013 min
 Response: 131538
 Conc: 2.79 ng/ml



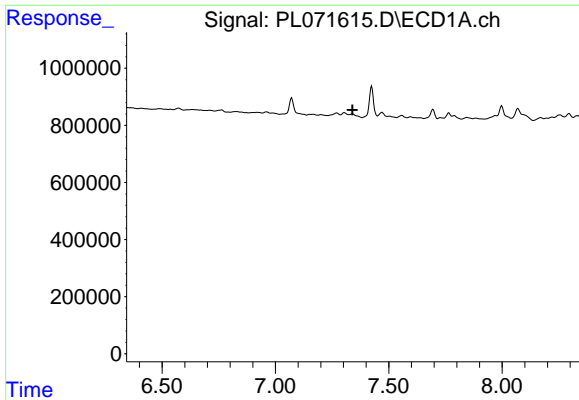
#25 Chlordane-3

R.T.: 0.000 min
 Exp R.T. : 7.272 min
 Response: 0
 Conc: N.D.



#25 Chlordane-3

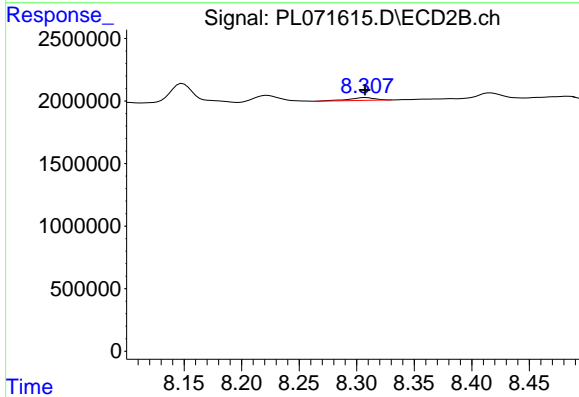
R.T.: 8.222 min
 Delta R.T.: -0.003 min
 Response: 828928
 Conc: 4.74 ng/ml



#26 Chlordane-4

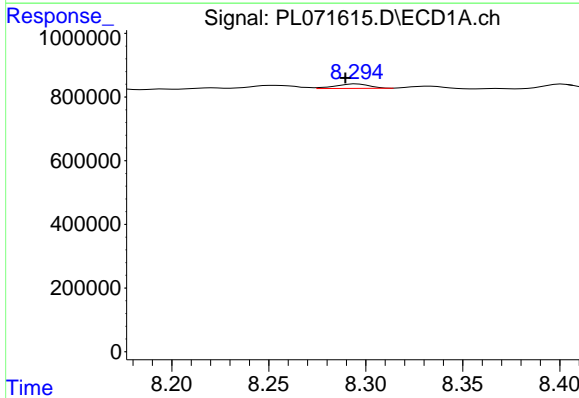
R.T.: 0.000 min
 Exp R.T.: 7.340 min
 Response: 0
 Conc: N.D.

Instrument :
 ECD_L
 ClientSampleId :



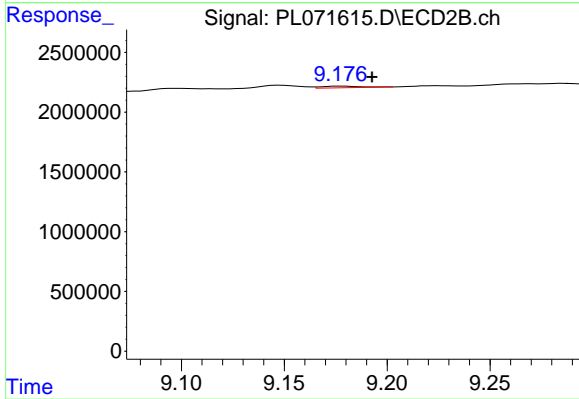
#26 Chlordane-4

R.T.: 8.308 min
 Delta R.T.: 0.000 min
 Response: 332491
 Conc: 1.58 ng/ml



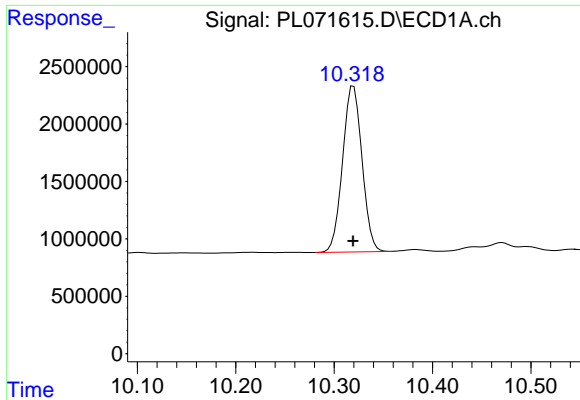
#27 Chlordane-5

R.T.: 8.295 min
 Delta R.T.: 0.006 min
 Response: 173100
 Conc: 8.09 ng/ml



#27 Chlordane-5

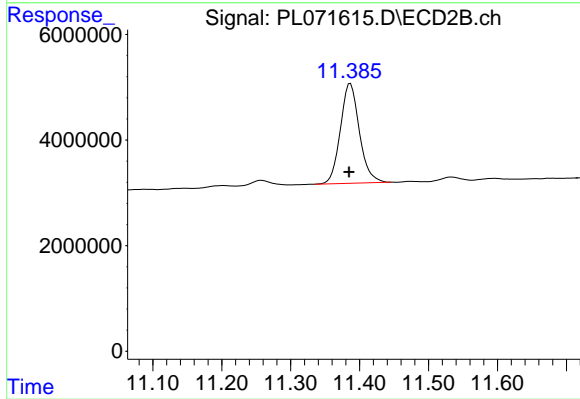
R.T.: 9.177 min
 Delta R.T.: -0.015 min
 Response: 176595
 Conc: 5.03 ng/ml



#28 Decachlorobiphenyl

R.T.: 10.320 min
Delta R.T.: 0.000 min
Response: 19802178
Conc: 29.80 ng/ml

Instrument :
ECD_L
ClientSampleId :



#28 Decachlorobiphenyl

R.T.: 11.387 min
Delta R.T.: 0.002 min
Response: 36212818
Conc: 33.33 ng/ml