

Data Path : Z:\pestpcbsrv\HPCHEM1\ECD_L\Data\PL122321\
 Data File : PL071624.D
 Signal(s) : Signal #1: ECD1A.ch Signal #2: ECD2B.ch
 Acq On : 24 Dec 2021 03:18
 Operator : AR\AJ
 Sample : I.BLK
 Misc :
 ALS Vial : 2 Sample Multiplier: 1

Instrument :
 ECD_L
 ClientSampleId :

Integration File signal 1: autoint1.e
 Integration File signal 2: autoint2.e
 Quant Time: Dec 24 05:01:53 2021
 Quant Method : Z:\pestpcbsrv\HPCHEM1\ECD_L\methods\PL121421.M
 Quant Title : GC Extractables
 QLast Update : Tue Dec 14 14:29:34 2021
 Response via : Initial Calibration
 Integrator: ChemStation

Volume Inj. : 1 µl
 Signal #1 Phase : ZB-MR2 Signal #2 Phase: ZB-MR1
 Signal #1 Info : 30M x 0.32mm x0.2 Signal #2 Info : 30M x 0.32mm x0.5µm

Compound	RT#1	RT#2	Resp#1	Resp#2	ng/ml	ng/ml

System Monitoring Compounds						
1) SA Tetrachlo...	4.559	5.496	13366500	36094925	28.200	30.299
28) SA Decachlor...	10.320	11.389	20144009	34356587	30.319	31.622
Target Compounds						
2) A alpha-BHC	0.000	6.055f	0	962810	N.D.	0.560 #
3) MA gamma-BHC...	0.000	6.463	0	275491	N.D.	0.173 #
4) MA Heptachlor	6.076f	7.135f	383388	-31349	0.555	N.D. #
5) MB Aldrin	0.000	7.512f	0	118233	N.D.	0.081 #
6) B beta-BHC	6.076	0.000	383388	0	1.343	N.D. #
8) B Heptachlo...	0.000	7.964	0	824699	N.D.	0.615 #
9) A Endosulfan I	0.000	8.363	0	81649	N.D.	0.068 #
10) B gamma-Chl...	0.000	8.228	0	939155	N.D.	0.726 #
11) B alpha-Chl...	0.000	8.281f	0	167553	N.D.	0.132 #
13) MA Dieldrin	7.686	0.000	74431	0	0.127	N.D. #
14) MA Endrin	8.001f	0.000	377982	0	0.690	N.D. #
15) B Endosulfa...	8.261f	9.103f	287209	390235	0.527	0.387 #
16) A 4,4'-DDD	0.000	9.008f	0	1870261	N.D.	2.119 #
19) B Endosulfa...	0.000	9.504	0	530736	N.D.	0.542 #
23) Chlordane-1	0.000	6.896f	0	561344	N.D.	12.212 #
24) Chlordane-2	0.000	7.463	0	28954	N.D.	0.614 #
25) Chlordane-3	0.000	8.228	0	939155	N.D.	5.365 #
26) Chlordane-4	0.000	8.281f	0	167553	N.D.	0.798 #
27) Chlordane-5	8.261f	0.000	287209	0	13.430	N.D. #

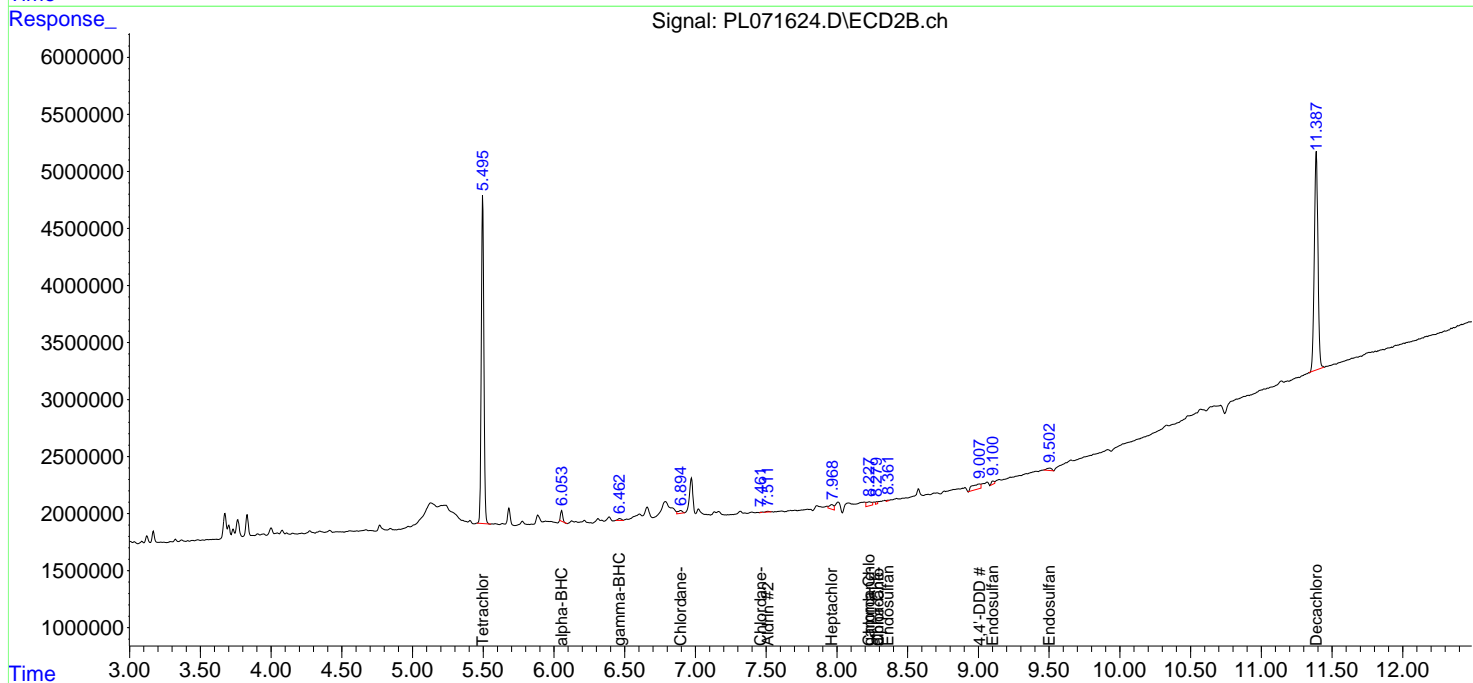
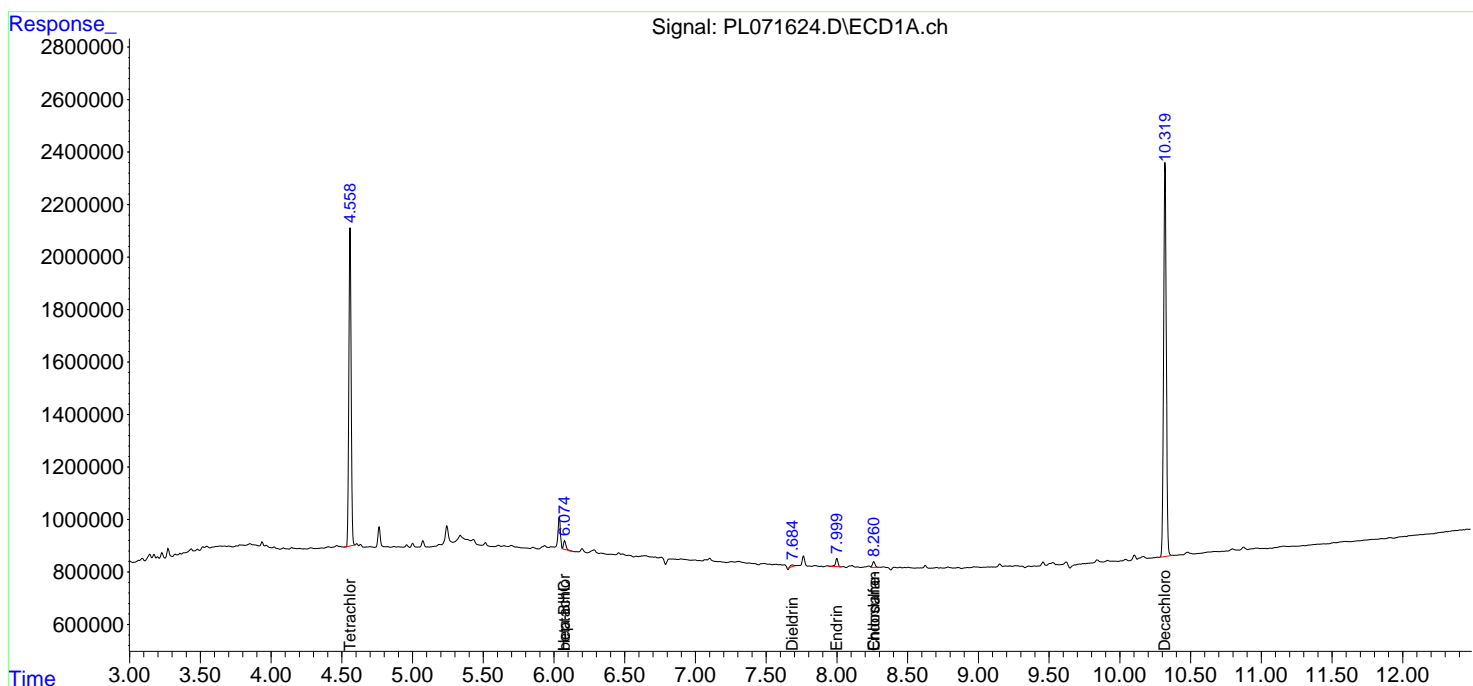
(f)=RT Delta > 1/2 Window (#)=Amounts differ by > 25% (m)=manual int.

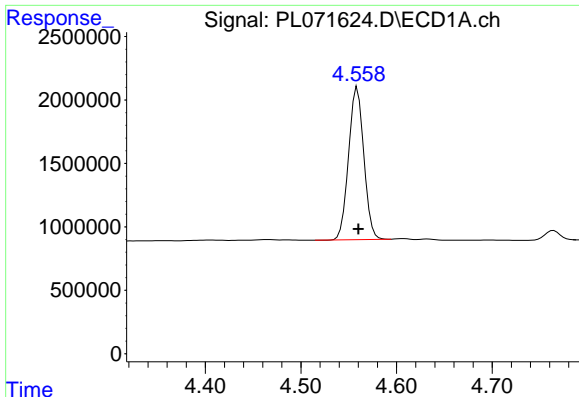
Data Path : Z:\pestpcbsrv\HPCHEM1\ECD_L\Data\PL122321\
 Data File : PL071624.D
 Signal(s) : Signal #1: ECD1A.ch Signal #2: ECD2B.ch
 Acq On : 24 Dec 2021 03:18
 Operator : AR\AJ
 Sample : I.BLK
 Misc :
 ALS Vial : 2 Sample Multiplier: 1

Instrument :
 ECD_L
 ClientSampleId :

Integration File signal 1: autoint1.e
 Integration File signal 2: autoint2.e
 Quant Time: Dec 24 05:01:53 2021
 Quant Method : Z:\pestpcbsrv\HPCHEM1\ECD_L\methods\PL121421.M
 Quant Title : GC Extractables
 QLast Update : Tue Dec 14 14:29:34 2021
 Response via : Initial Calibration
 Integrator: ChemStation

Volume Inj. : 1 µl
 Signal #1 Phase : ZB-MR2 Signal #2 Phase: ZB-MR1
 Signal #1 Info : 30M x 0.32mm x0.2 Signal #2 Info : 30M x 0.32mm x0.5µm

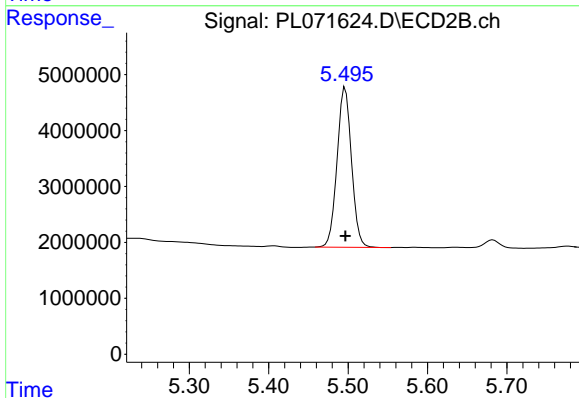




#1 Tetrachloro-m-xylene

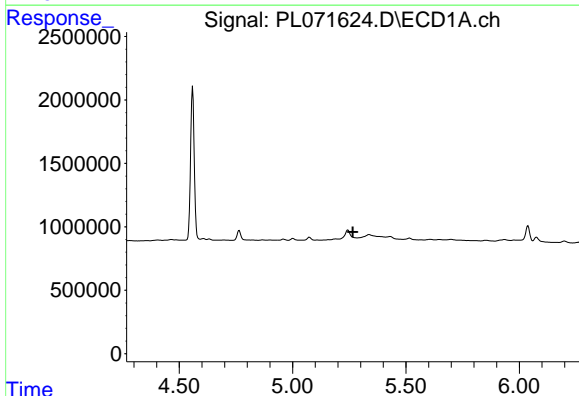
R.T.: 4.559 min
 Delta R.T.: 0.000 min
 Response: 13366500
 Conc: 28.20 ng/ml

Instrument :
 ECD_L
 ClientSampleId :



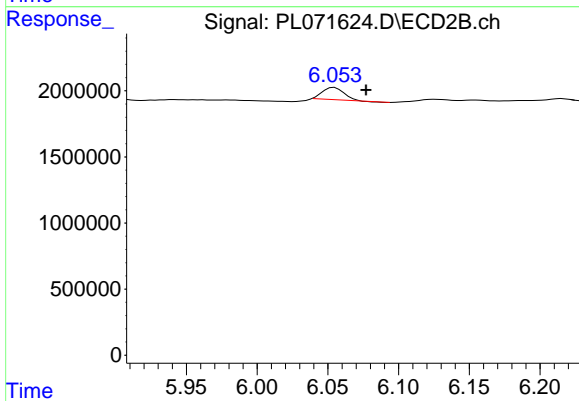
#1 Tetrachloro-m-xylene

R.T.: 5.496 min
 Delta R.T.: 0.000 min
 Response: 36094925
 Conc: 30.30 ng/ml



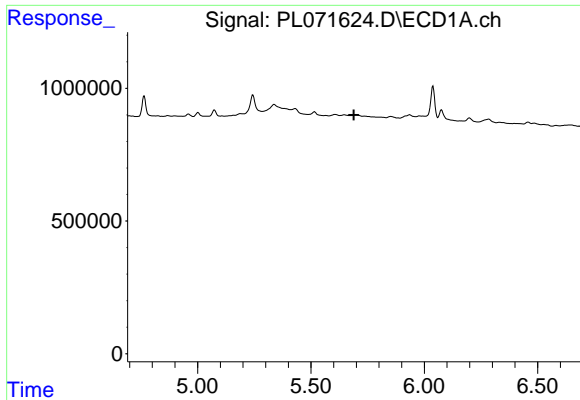
#2 alpha-BHC

R.T.: 0.000 min
 Exp R.T. : 5.266 min
 Response: 0
 Conc: N.D.



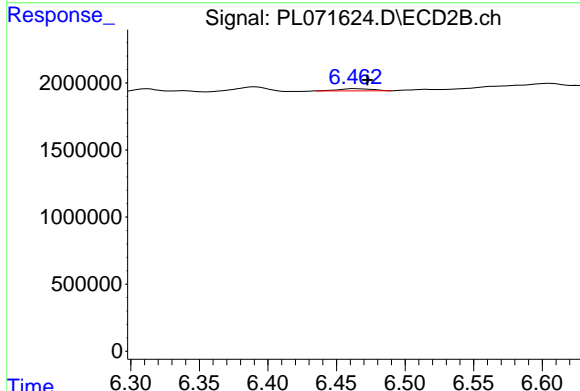
#2 alpha-BHC

R.T.: 6.055 min
 Delta R.T.: -0.022 min
 Response: 962810
 Conc: 0.56 ng/ml

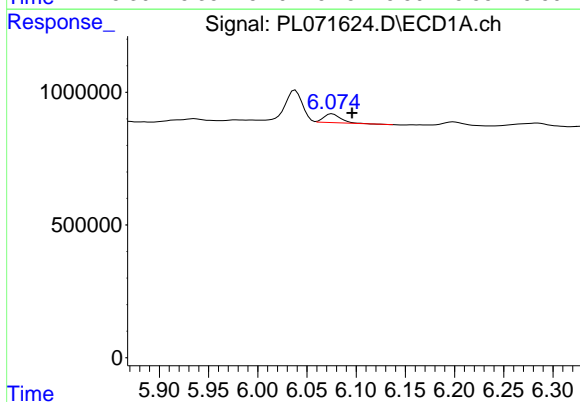


#3 gamma-BHC (Lindane)
 R.T.: 0.000 min
 Exp R.T.: 5.689 min
 Response: 0
 Conc: N.D.

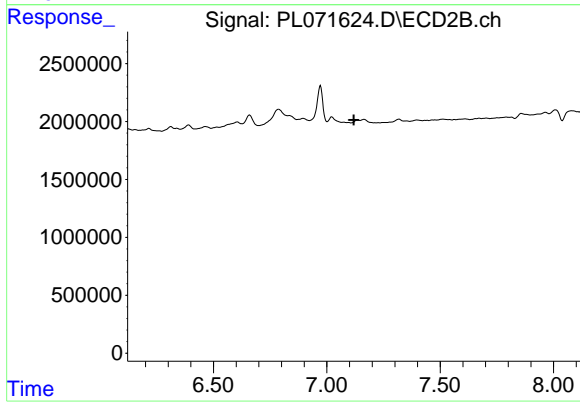
Instrument :
 ECD_L
 ClientSampleId :



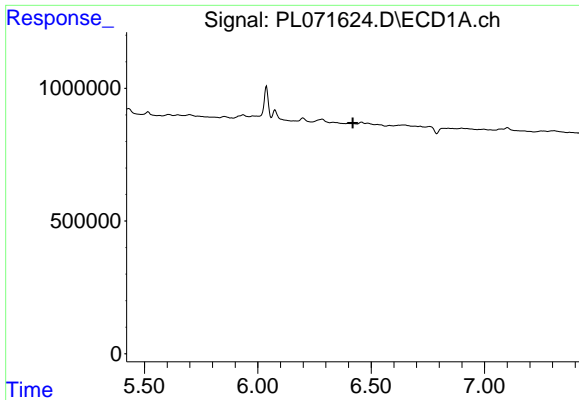
#3 gamma-BHC (Lindane)
 R.T.: 6.463 min
 Delta R.T.: -0.009 min
 Response: 275491
 Conc: 0.17 ng/ml



#4 Heptachlor
 R.T.: 6.076 min
 Delta R.T.: -0.020 min
 Response: 383388
 Conc: 0.55 ng/ml

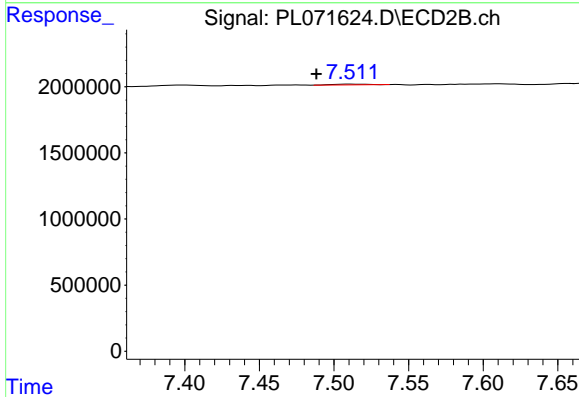


#4 Heptachlor
 R.T.: 7.135 min
 Delta R.T.: 0.016 min
 Response: -31349
 Conc: N.D.

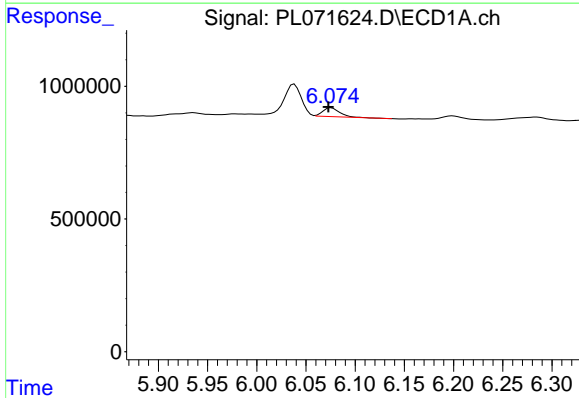


#5 Aldrin
 R.T.: 0.000 min
 Exp R.T.: 6.419 min
 Response: 0
 Conc: N.D.

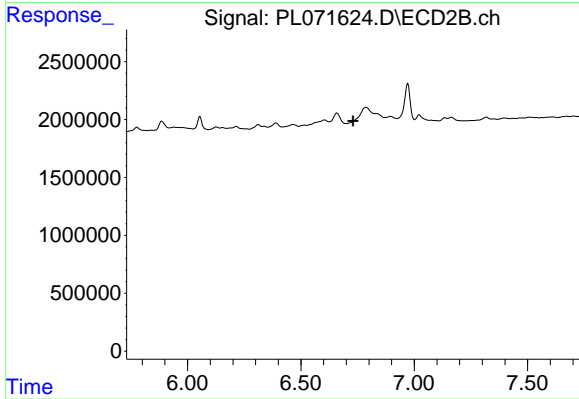
Instrument :
 ECD_L
 ClientSampleId :



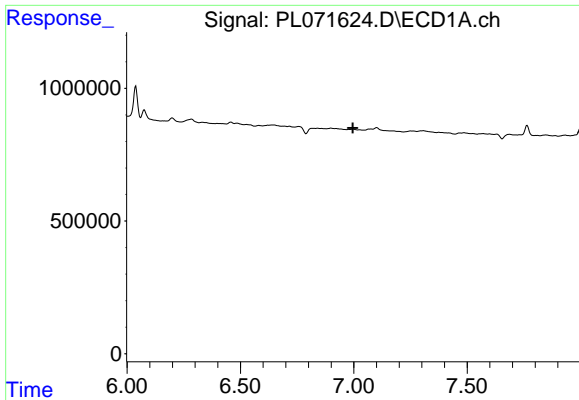
#5 Aldrin
 R.T.: 7.512 min
 Delta R.T.: 0.024 min
 Response: 118233
 Conc: 0.08 ng/ml



#6 beta-BHC
 R.T.: 6.076 min
 Delta R.T.: 0.003 min
 Response: 383388
 Conc: 1.34 ng/ml



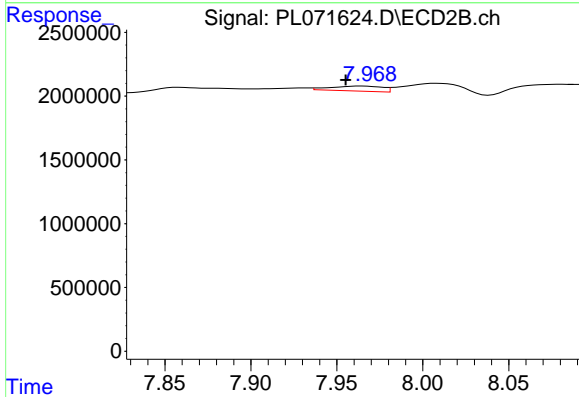
#6 beta-BHC
 R.T.: 0.000 min
 Exp R.T.: 6.730 min
 Response: 0
 Conc: N.D.



#8 Heptachlor epoxide

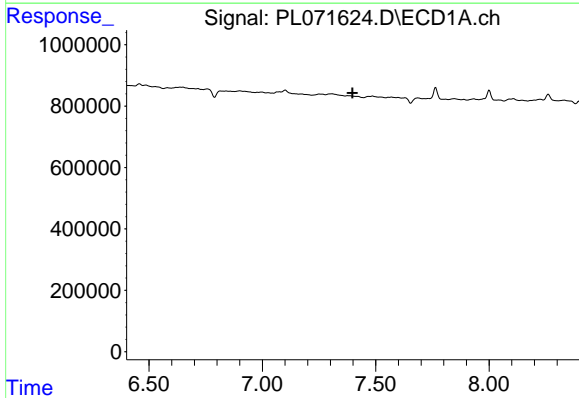
R.T.: 0.000 min
 Exp R.T.: 6.996 min
 Response: 0
 Conc: N.D.

Instrument :
 ECD_L
 ClientSampleId :



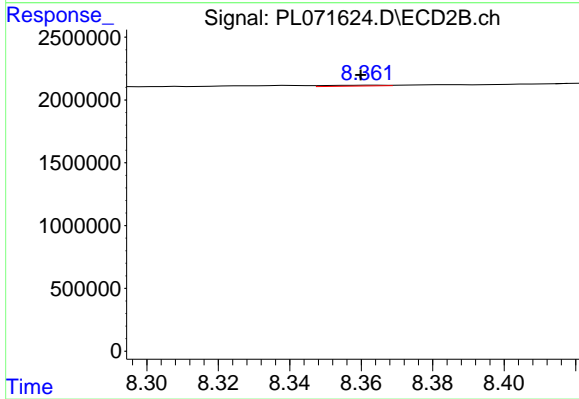
#8 Heptachlor epoxide

R.T.: 7.964 min
 Delta R.T.: 0.008 min
 Response: 824699
 Conc: 0.61 ng/ml



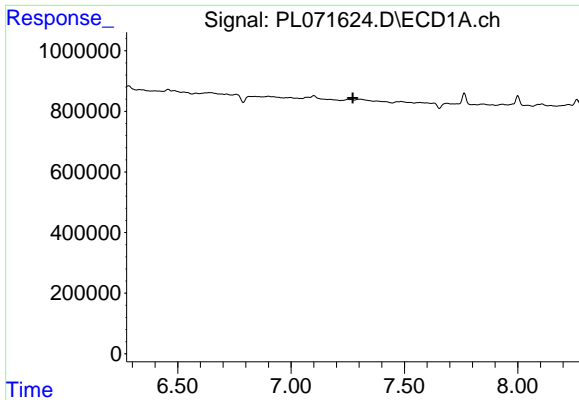
#9 Endosulfan I

R.T.: 0.000 min
 Exp R.T.: 7.398 min
 Response: 0
 Conc: N.D.



#9 Endosulfan I

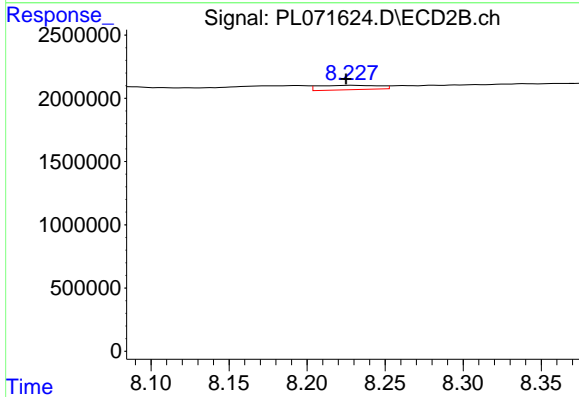
R.T.: 8.363 min
 Delta R.T.: 0.003 min
 Response: 81649
 Conc: 0.07 ng/ml



#10 gamma-Chlordane

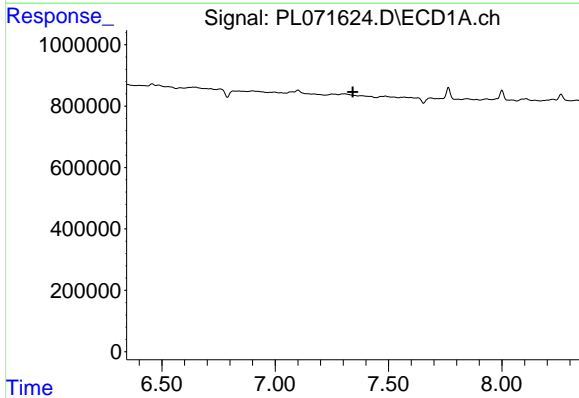
R.T.: 0.000 min
 Exp R.T.: 7.273 min
 Response: 0
 Conc: N.D.

Instrument :
 ECD_L
 ClientSampleId :



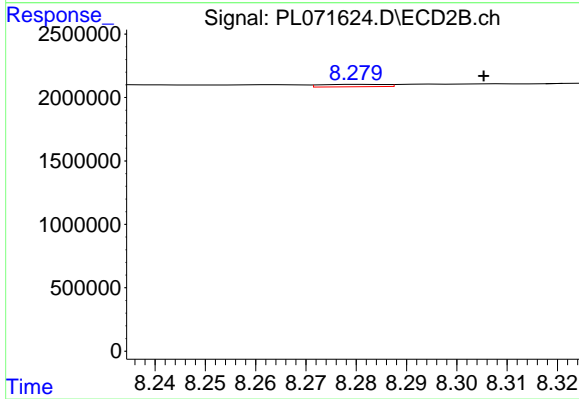
#10 gamma-Chlordane

R.T.: 8.228 min
 Delta R.T.: 0.003 min
 Response: 939155
 Conc: 0.73 ng/ml



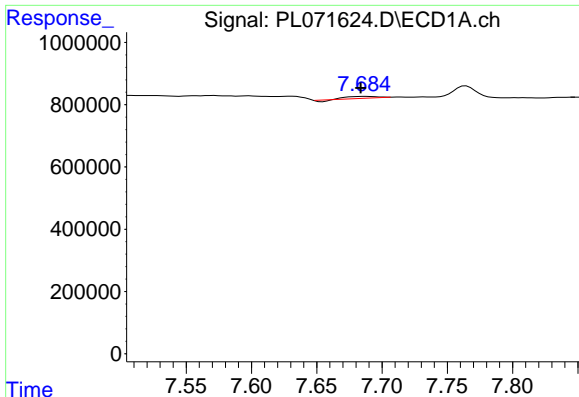
#11 alpha-Chlordane

R.T.: 0.000 min
 Exp R.T.: 7.342 min
 Response: 0
 Conc: N.D.



#11 alpha-Chlordane

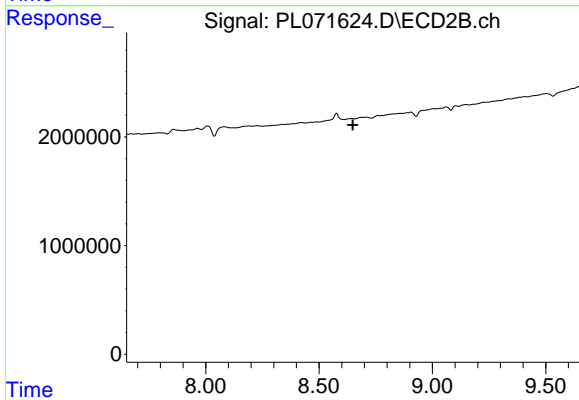
R.T.: 8.281 min
 Delta R.T.: -0.024 min
 Response: 167553
 Conc: 0.13 ng/ml



#13 Dieldrin

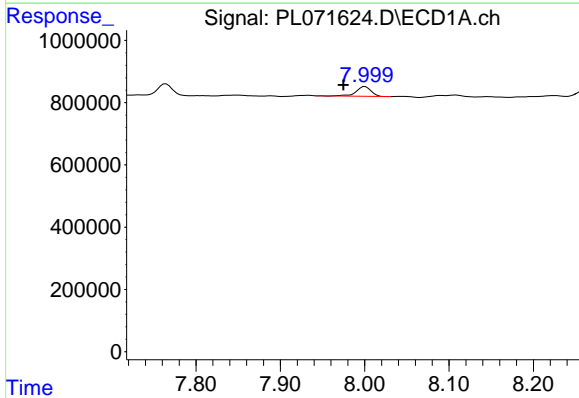
R.T.: 7.686 min
 Delta R.T.: 0.002 min
 Response: 74431
 Conc: 0.13 ng/ml

Instrument :
 ECD_L
 ClientSampleId :



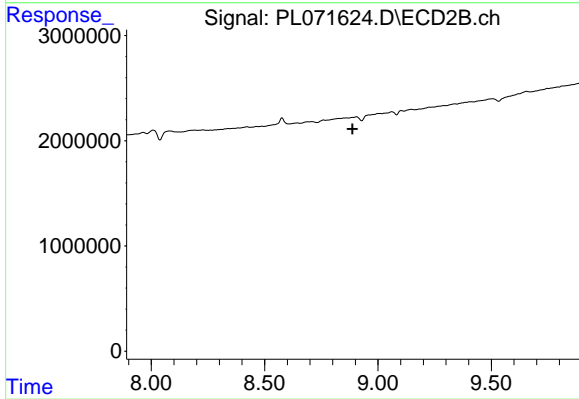
#13 Dieldrin

R.T.: 0.000 min
 Exp R.T. : 8.649 min
 Response: 0
 Conc: N.D.



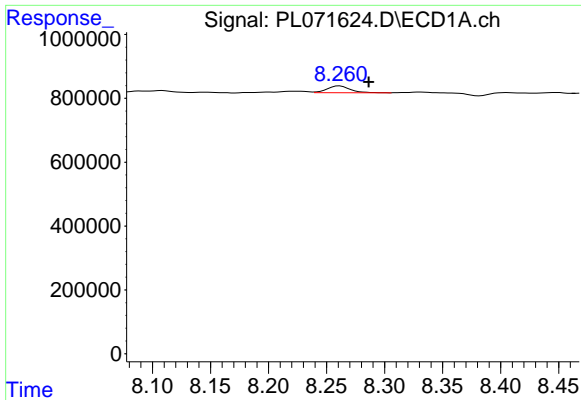
#14 Endrin

R.T.: 8.001 min
 Delta R.T.: 0.026 min
 Response: 377982
 Conc: 0.69 ng/ml



#14 Endrin

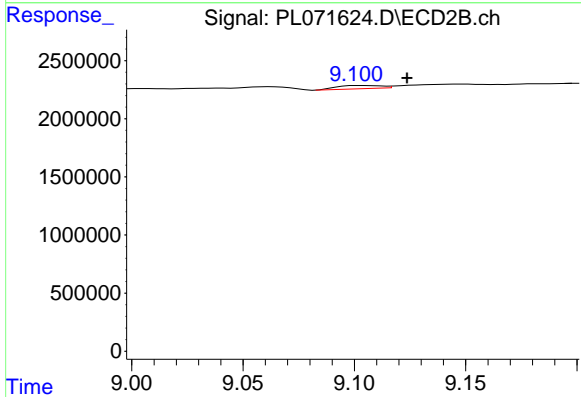
R.T.: 0.000 min
 Exp R.T. : 8.888 min
 Response: 0
 Conc: N.D.



#15 Endosulfan II

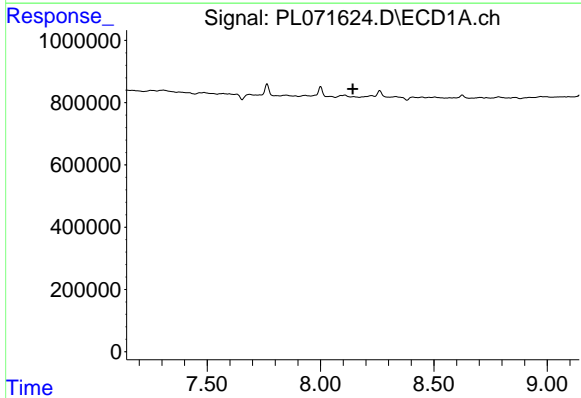
R.T.: 8.261 min
 Delta R.T.: -0.025 min
 Response: 287209
 Conc: 0.53 ng/ml

Instrument :
 ECD_L
 ClientSampleId :



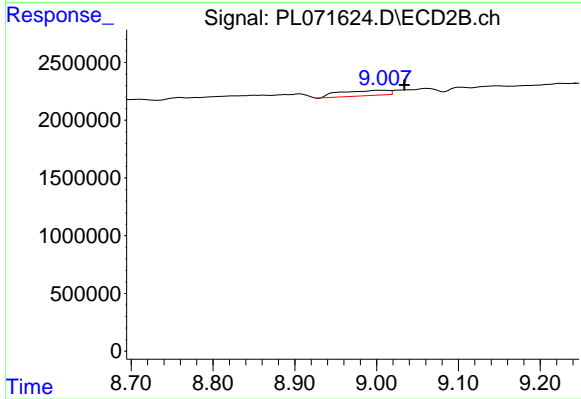
#15 Endosulfan II

R.T.: 9.103 min
 Delta R.T.: -0.021 min
 Response: 390235
 Conc: 0.39 ng/ml



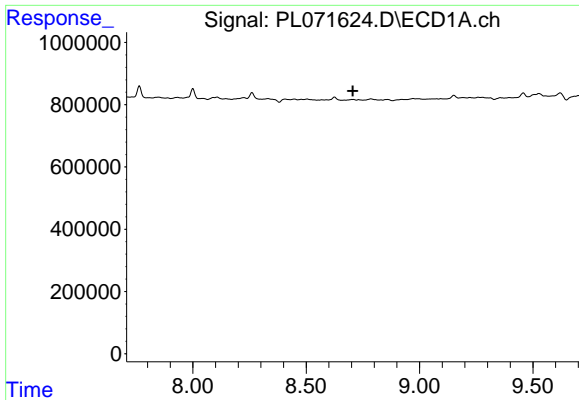
#16 4,4'-DDD

R.T.: 0.000 min
 Exp R.T. : 8.143 min
 Response: 0
 Conc: N.D.



#16 4,4'-DDD

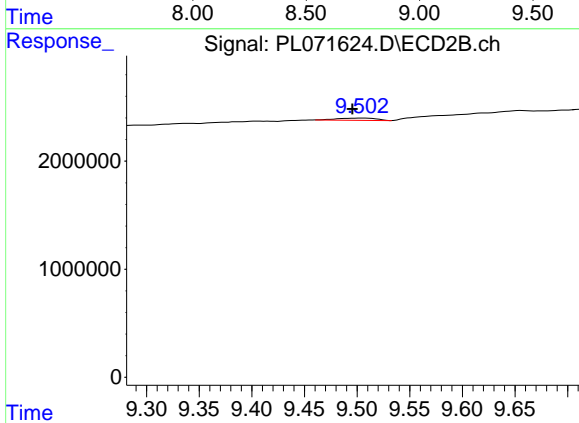
R.T.: 9.008 min
 Delta R.T.: -0.026 min
 Response: 1870261
 Conc: 2.12 ng/ml



#19 Endosulfan Sulfate

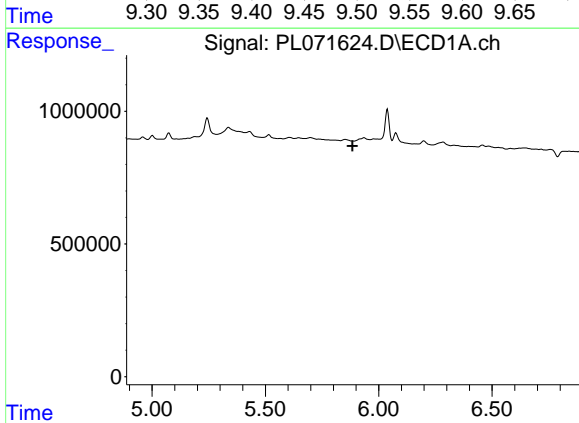
R.T.: 0.000 min
 Exp R.T.: 8.706 min
 Response: 0
 Conc: N.D.

Instrument :
 ECD_L
 ClientSampleId :



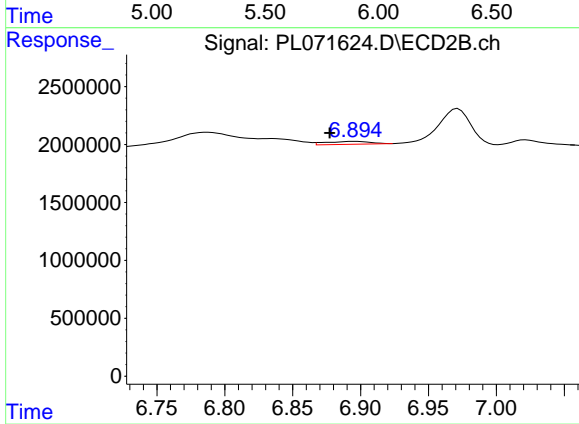
#19 Endosulfan Sulfate

R.T.: 9.504 min
 Delta R.T.: 0.009 min
 Response: 530736
 Conc: 0.54 ng/ml



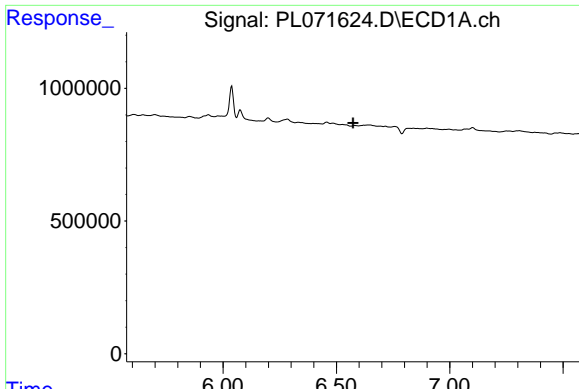
#23 Chlordane-1

R.T.: 0.000 min
 Exp R.T.: 5.884 min
 Response: 0
 Conc: N.D.



#23 Chlordane-1

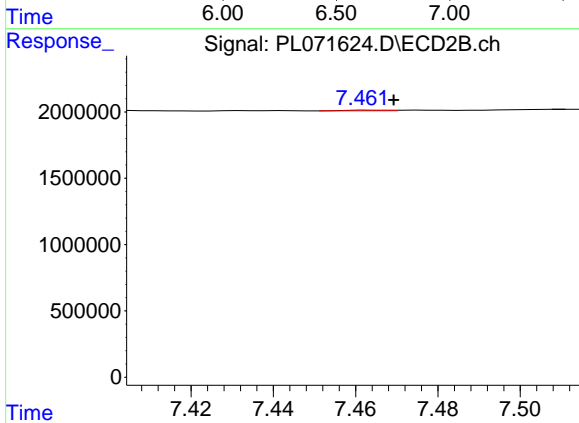
R.T.: 6.896 min
 Delta R.T.: 0.019 min
 Response: 561344
 Conc: 12.21 ng/ml



#24 Chlordane-2

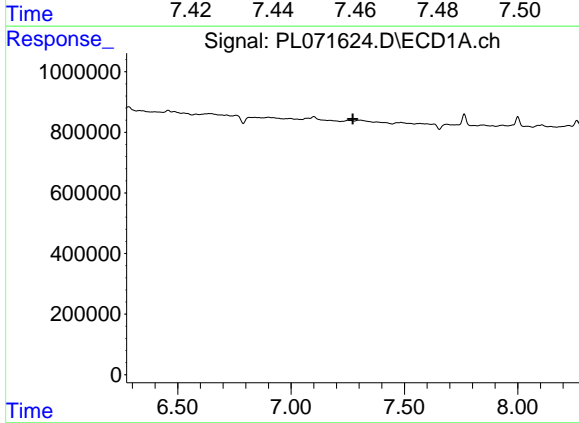
R.T.: 0.000 min
 Exp R.T. : 6.574 min
 Response: 0
 Conc: N.D.

Instrument :
 ECD_L
 ClientSampleId :



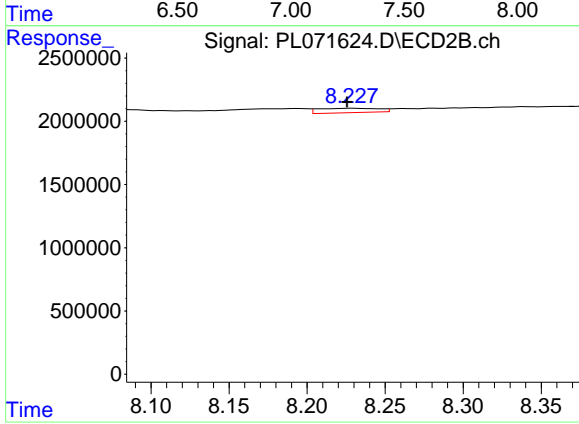
#24 Chlordane-2

R.T.: 7.463 min
 Delta R.T.: -0.006 min
 Response: 28954
 Conc: 0.61 ng/ml



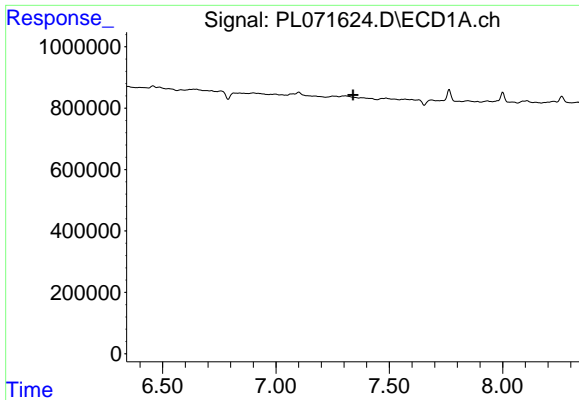
#25 Chlordane-3

R.T.: 0.000 min
 Exp R.T. : 7.272 min
 Response: 0
 Conc: N.D.



#25 Chlordane-3

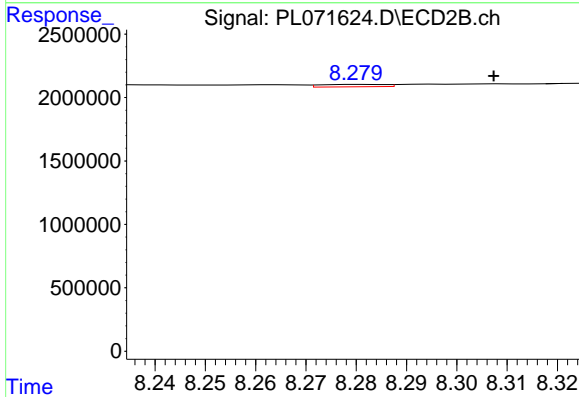
R.T.: 8.228 min
 Delta R.T.: 0.003 min
 Response: 939155
 Conc: 5.36 ng/ml



#26 Chlordane-4

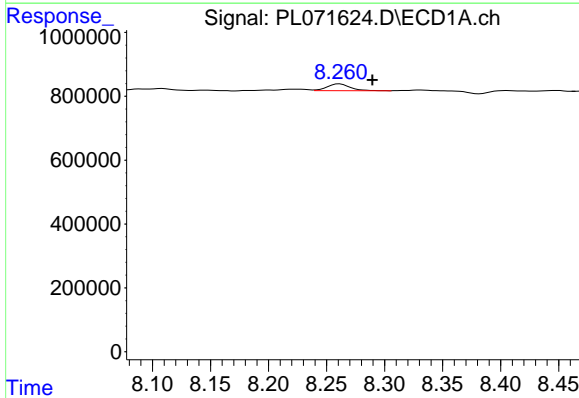
R.T.: 0.000 min
 Exp R.T.: 7.340 min
 Response: 0
 Conc: N.D.

Instrument :
 ECD_L
 ClientSampleId :



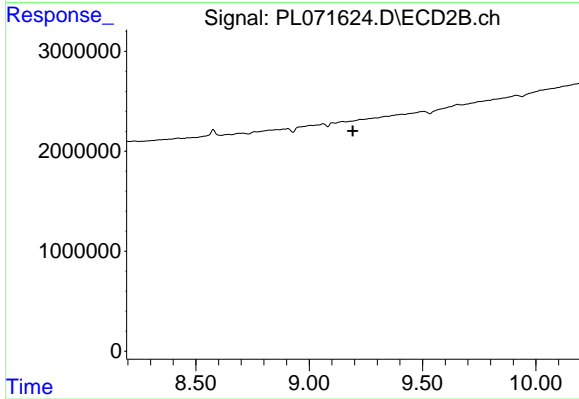
#26 Chlordane-4

R.T.: 8.281 min
 Delta R.T.: -0.026 min
 Response: 167553
 Conc: 0.80 ng/ml



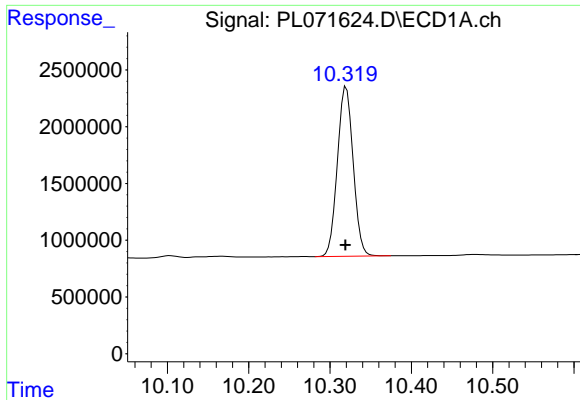
#27 Chlordane-5

R.T.: 8.261 min
 Delta R.T.: -0.028 min
 Response: 287209
 Conc: 13.43 ng/ml



#27 Chlordane-5

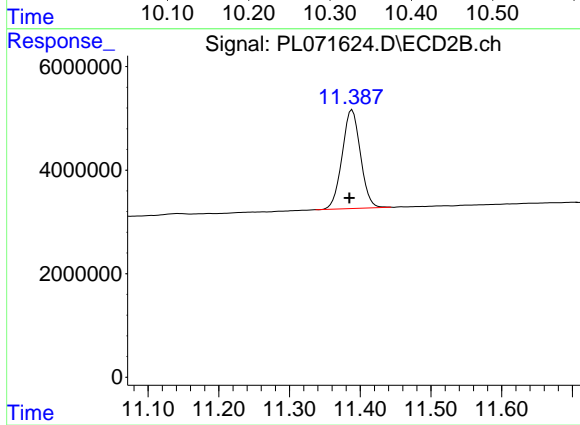
R.T.: 0.000 min
 Exp R.T.: 9.193 min
 Response: 0
 Conc: N.D.



#28 Decachlorobiphenyl

R.T.: 10.320 min
Delta R.T.: 0.000 min
Response: 20144009
Conc: 30.32 ng/ml

Instrument :
ECD_L
ClientSampleId :



#28 Decachlorobiphenyl

R.T.: 11.389 min
Delta R.T.: 0.004 min
Response: 34356587
Conc: 31.62 ng/ml