

Data Path : Z:\pestpcbsrv\HPCHEM1\ECD_L\Data\PL122322\
 Data File : PL079869.D
 Signal(s) : Signal #1: ECD1A.ch Signal #2: ECD2B.ch
 Acq On : 23 Dec 2022 14:16
 Operator : AR\AJ
 Sample : HEXANE
 Misc :
 ALS Vial : 1 Sample Multiplier: 1

Instrument :
 ECD_L
 ClientSampleId :
 HEXANE

Integration File signal 1: autoint1.e
 Integration File signal 2: autoint2.e
 Quant Time: Dec 25 19:59:17 2022
 Quant Method : Z:\pestpcbsrv\HPCHEM1\ECD_L\methods\PL122322.M
 Quant Title : GC Extractables
 QLast Update : Sun Dec 25 19:58:15 2022
 Response via : Initial Calibration
 Integrator: ChemStation

Volume Inj. : 1 µl
 Signal #1 Phase : ZB-MR2 Signal #2 Phase: ZB-MR1
 Signal #1 Info : 30M x 0.32mm x0.2 Signal #2 Info : 30M x 0.32mm x0.5µm

Compound	RT#1	RT#2	Resp#1	Resp#2	ng/ml	ng/ml

System Monitoring Compounds						
28) SA Decachlor...	8.769	7.634	226052	568059	0.115	0.249 #
Target Compounds						
2) A alpha-BHC	3.771	0.000	65477	0	0.018	N.D. #
3) MA gamma-BHC...	4.139f	0.000	66695	0	0.020	N.D. #
4) MA Heptachlor	0.000	3.677f	0	826036	N.D.	0.200 #
5) MB Aldrin	0.000	3.993f	0	458931	N.D.	0.119 #
6) B beta-BHC	0.000	3.677	0	826036	N.D.	0.535 #
8) B Heptachlo...	5.462	4.437f	28137357	4508061	10.427	1.299 #
9) A Endosulfan I	5.864f	0.000	1320356	0	0.486	N.D. #
10) B gamma-Chl...	0.000	4.716	0	2470736	N.D.	0.704 #
12) B 4,4'-DDE	0.000	4.989f	0	1012552	N.D.	0.316 #
13) MA Dieldrin	0.000	5.102	0	12544595	N.D.	3.618 #
14) MA Endrin	0.000	5.389f	0	3101874	N.D.	1.048 #
15) B Endosulfa...	6.549f	0.000	30067809	0	12.003	N.D. #
17) MA 4,4'-DDT	6.792	0.000	960198	0	0.408	N.D. #
18) B Endrin al...	6.686f	5.866f	3545507	685773	1.886	0.314 #
19) B Endosulfa...	0.000	6.044f	0	349473	N.D.	0.122 #
23) Chlordane-1	0.000	3.549f	0	2192284	N.D.	19.836 #
24) Chlordane-2	0.000	4.092	0	7606675	N.D.	64.932 #
25) Chlordane-3	0.000	4.716	0	2470736	N.D.	7.236 #
27) Chlordane-5	6.666f	0.000	2030517	0	21.475	N.D. #

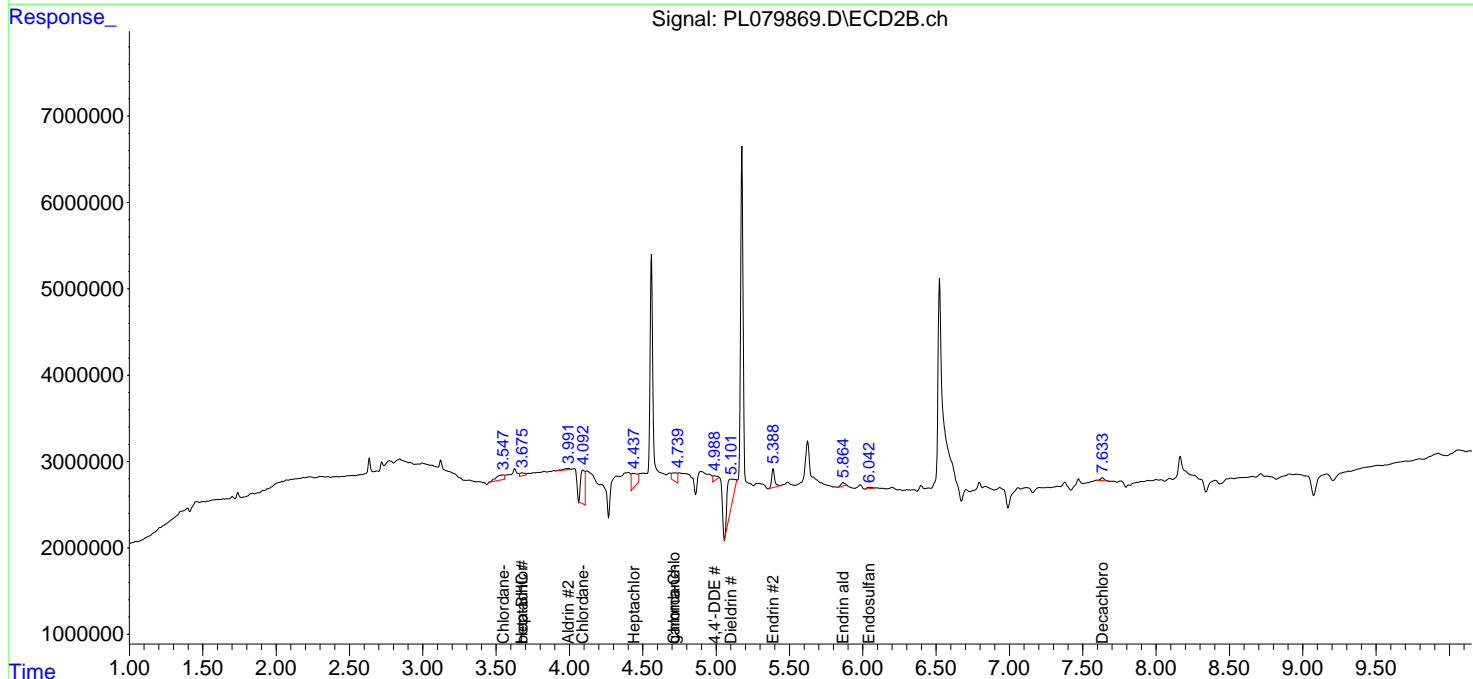
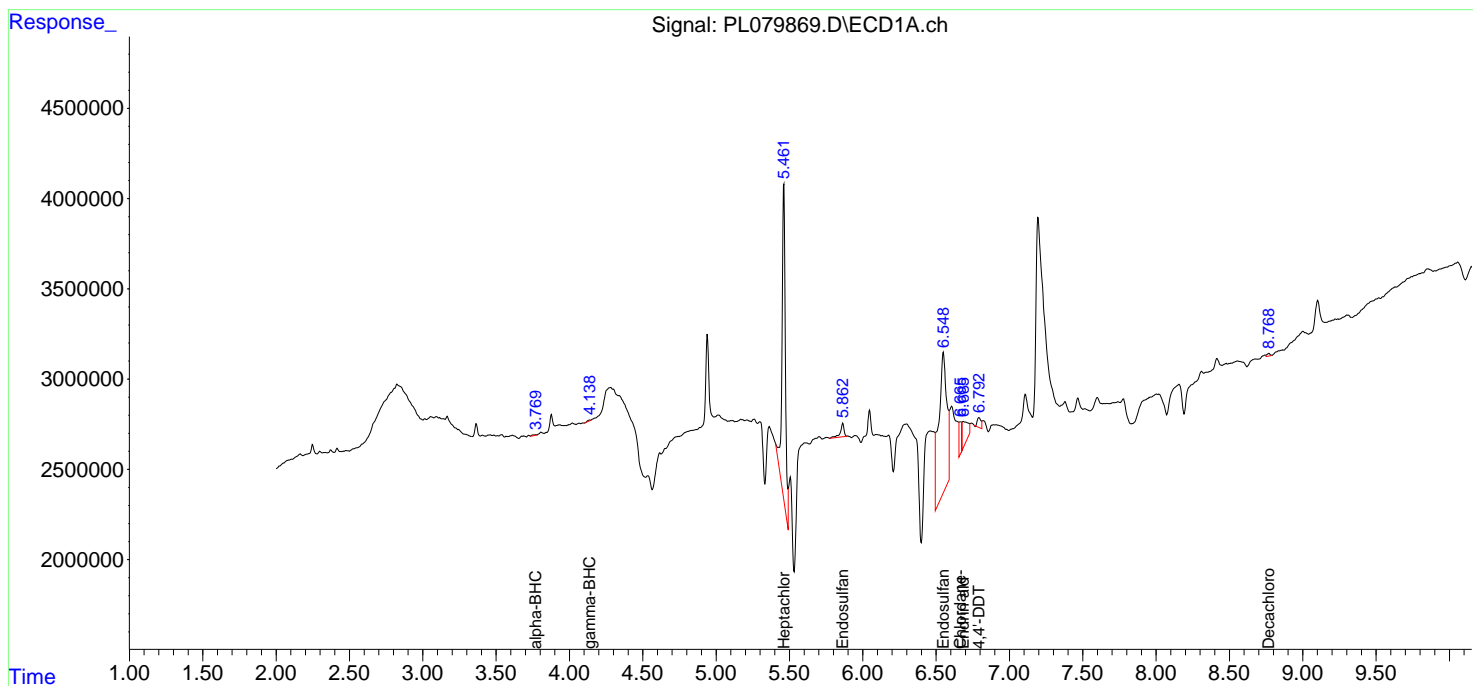
(f)=RT Delta > 1/2 Window (#)=Amounts differ by > 25% (m)=manual int.

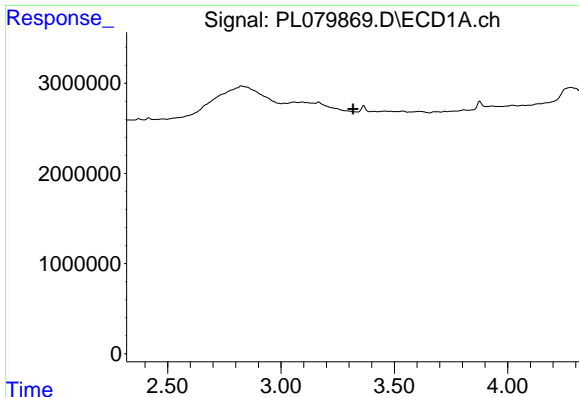
Data Path : Z:\pestpcbsrv\HPCHEM1\ECD_L\Data\PL122322\
 Data File : PL079869.D
 Signal(s) : Signal #1: ECD1A.ch Signal #2: ECD2B.ch
 Acq On : 23 Dec 2022 14:16
 Operator : AR\AJ
 Sample : HEXANE
 Misc :
 ALS Vial : 1 Sample Multiplier: 1

Instrument :
 ECD_L
 ClientSampleId :
 HEXANE

Integration File signal 1: autoint1.e
 Integration File signal 2: autoint2.e
 Quant Time: Dec 25 19:59:17 2022
 Quant Method : Z:\pestpcbsrv\HPCHEM1\ECD_L\methods\PL122322.M
 Quant Title : GC Extractables
 QLast Update : Sun Dec 25 19:58:15 2022
 Response via : Initial Calibration
 Integrator: ChemStation

Volume Inj. : 1 µl
 Signal #1 Phase : ZB-MR2 Signal #2 Phase: ZB-MR1
 Signal #1 Info : 30M x 0.32mm x0.2 Signal #2 Info : 30M x 0.32mm x0.5µm

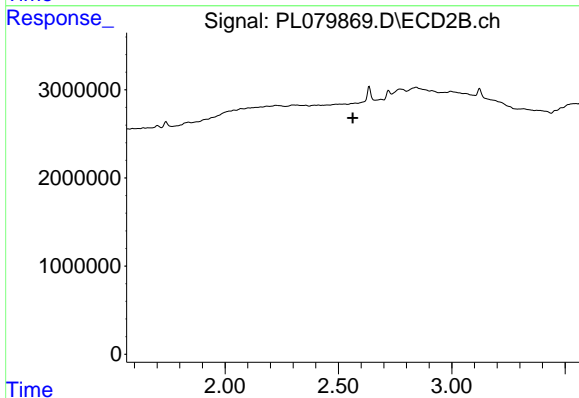




#1 Tetrachloro-m-xylene

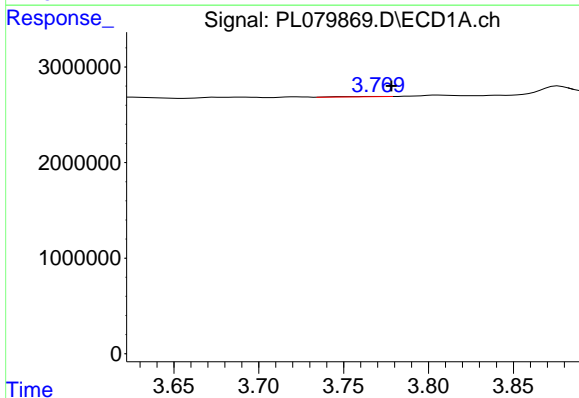
R.T.: 0.000 min
 Exp R.T. : 3.318 min
 Response: 0
 Conc: N.D.

Instrument :
 ECD_L
 ClientSampleId :
 HEXANE



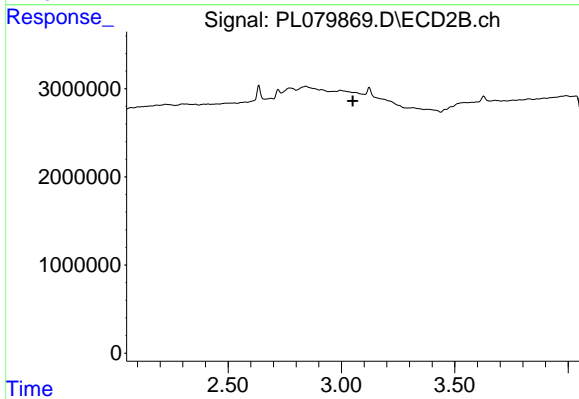
#1 Tetrachloro-m-xylene

R.T.: 0.000 min
 Exp R.T. : 2.564 min
 Response: 0
 Conc: N.D.



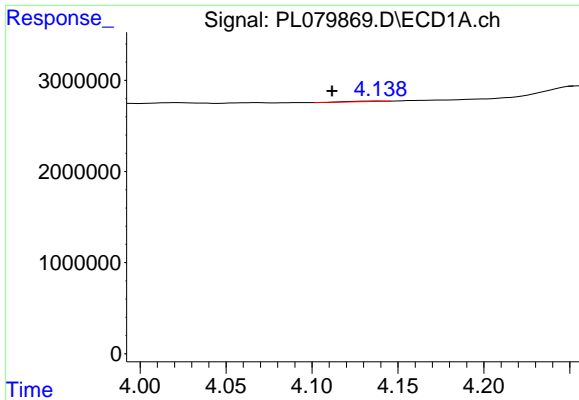
#2 alpha-BHC

R.T.: 3.771 min
 Delta R.T.: -0.008 min
 Response: 65477
 Conc: 0.02 ng/ml



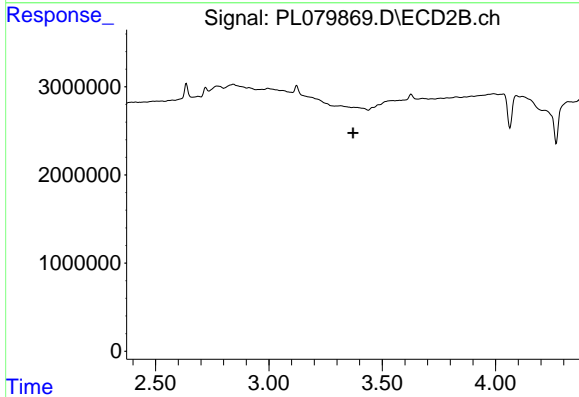
#2 alpha-BHC

R.T.: 0.000 min
 Exp R.T. : 3.050 min
 Response: 0
 Conc: N.D.

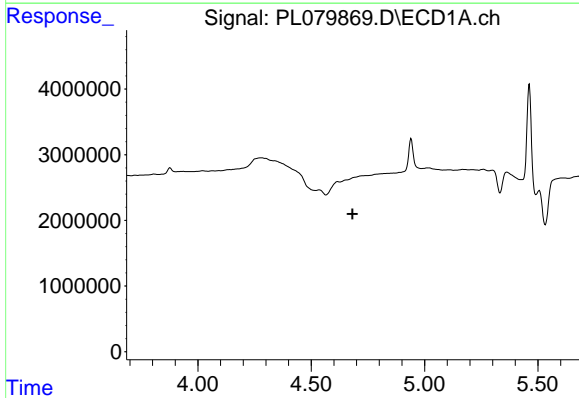


#3 gamma-BHC (Lindane)
 R.T.: 4.139 min
 Delta R.T.: 0.028 min
 Response: 66695
 Conc: 0.02 ng/ml

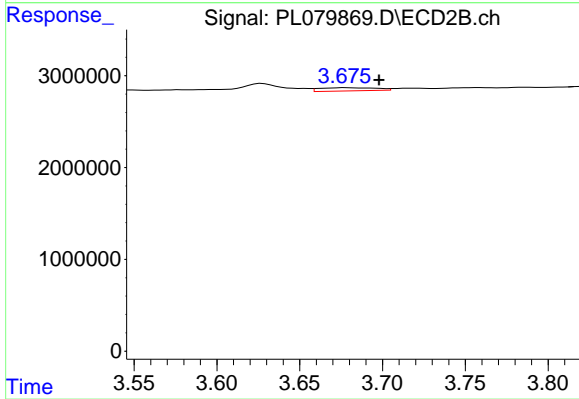
Instrument :
 ECD_L
 ClientSampleId :
 HEXANE



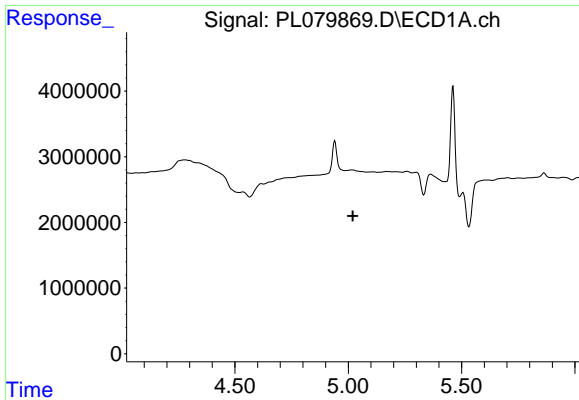
#3 gamma-BHC (Lindane)
 R.T.: 0.000 min
 Exp R.T. : 3.372 min
 Response: 0
 Conc: N.D.



#4 Heptachlor
 R.T.: 0.000 min
 Exp R.T. : 4.682 min
 Response: 0
 Conc: N.D.

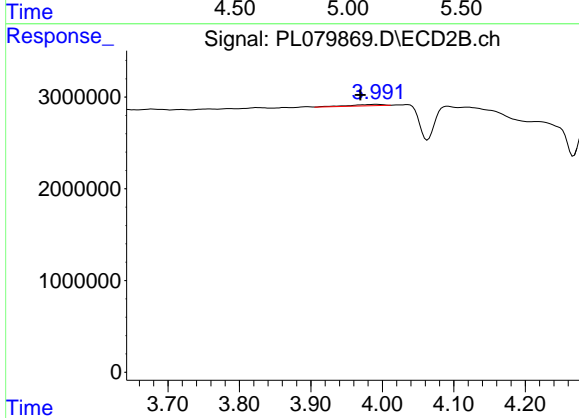


#4 Heptachlor
 R.T.: 3.677 min
 Delta R.T.: -0.021 min
 Response: 826036
 Conc: 0.20 ng/ml

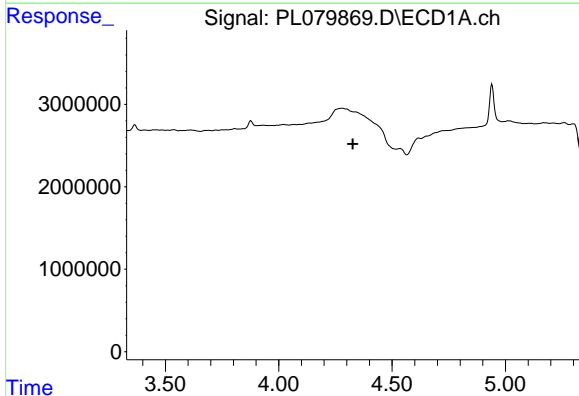


#5 Aldrin
 R.T.: 0.000 min
 Exp R.T.: 5.021 min
 Response: 0
 Conc: N.D.

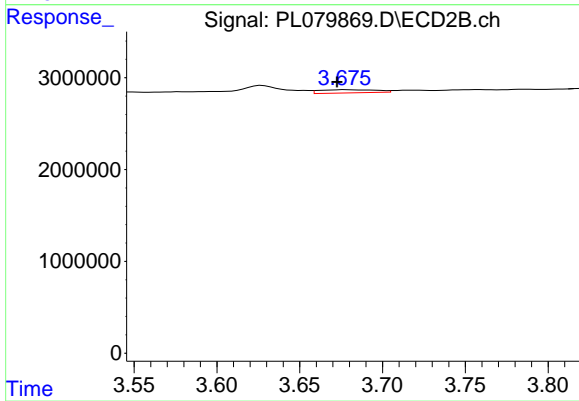
Instrument :
 ECD_L
 ClientSampleId :
 HEXANE



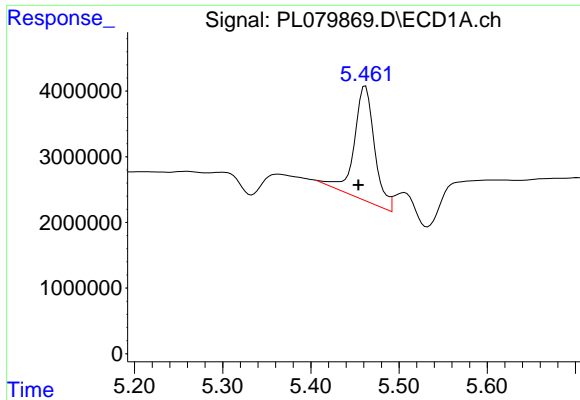
#5 Aldrin
 R.T.: 3.993 min
 Delta R.T.: 0.023 min
 Response: 458931
 Conc: 0.12 ng/ml



#6 beta-BHC
 R.T.: 0.000 min
 Exp R.T.: 4.327 min
 Response: 0
 Conc: N.D.

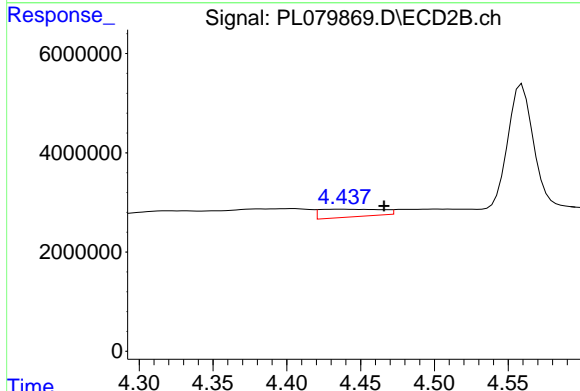


#6 beta-BHC
 R.T.: 3.677 min
 Delta R.T.: 0.004 min
 Response: 826036
 Conc: 0.53 ng/ml

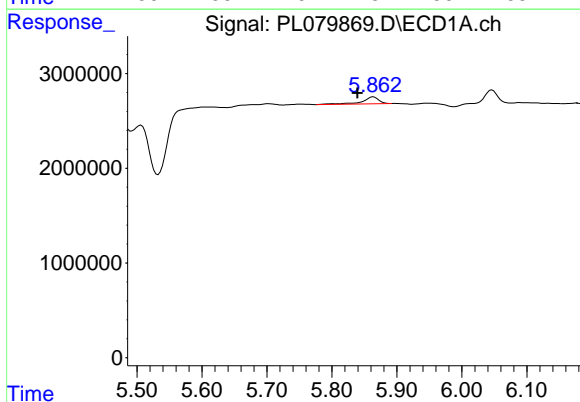


#8 Heptachlor epoxide
 R.T.: 5.462 min
 Delta R.T.: 0.008 min
 Response: 28137357
 Conc: 10.43 ng/ml

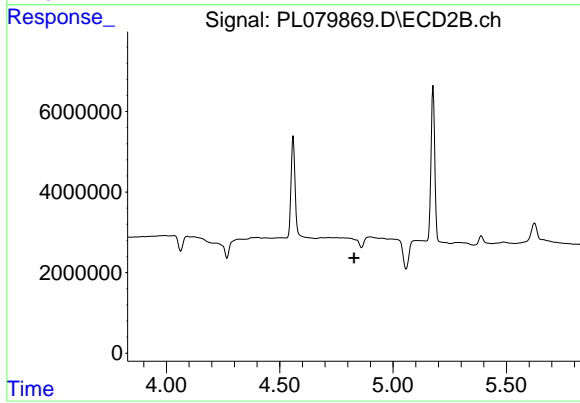
Instrument :
 ECD_L
 ClientSampleId :
 HEXANE



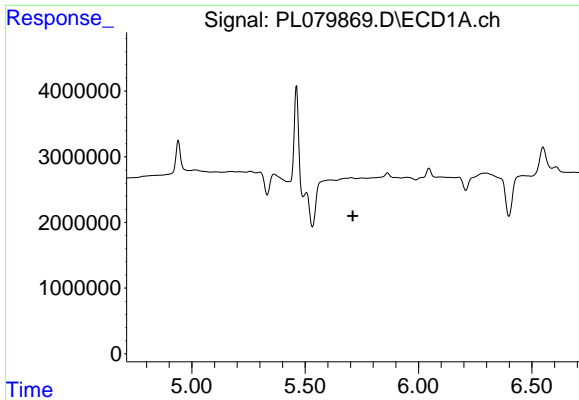
#8 Heptachlor epoxide
 R.T.: 4.437 min
 Delta R.T.: -0.029 min
 Response: 4508061
 Conc: 1.30 ng/ml



#9 Endosulfan I
 R.T.: 5.864 min
 Delta R.T.: 0.024 min
 Response: 1320356
 Conc: 0.49 ng/ml



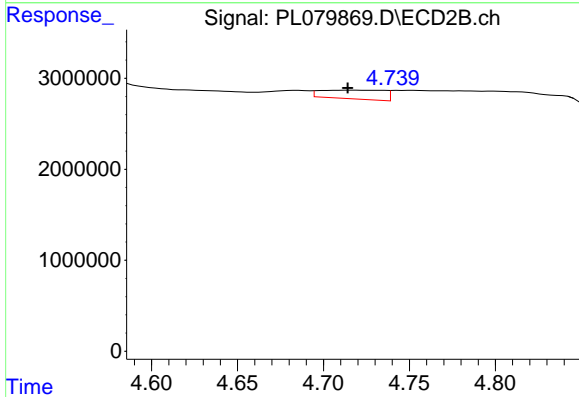
#9 Endosulfan I
 R.T.: 0.000 min
 Exp R.T. : 4.829 min
 Response: 0
 Conc: N.D.



#10 gamma-Chlordane

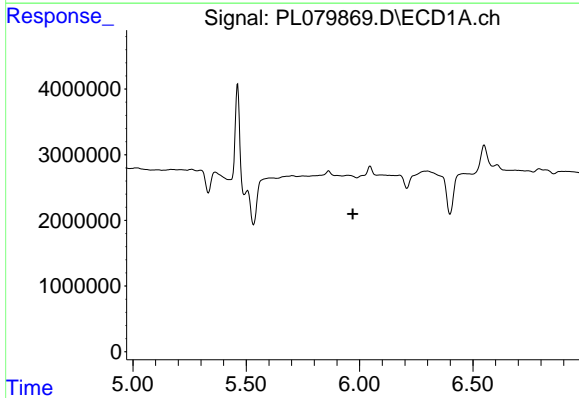
R.T.: 0.000 min
 Exp R.T.: 5.710 min
 Response: 0
 Conc: N.D.

Instrument :
 ECD_L
 ClientSampleId :
 HEXANE



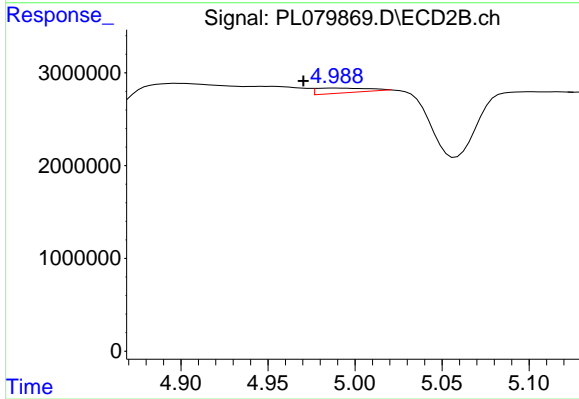
#10 gamma-Chlordane

R.T.: 4.716 min
 Delta R.T.: 0.002 min
 Response: 2470736
 Conc: 0.70 ng/ml



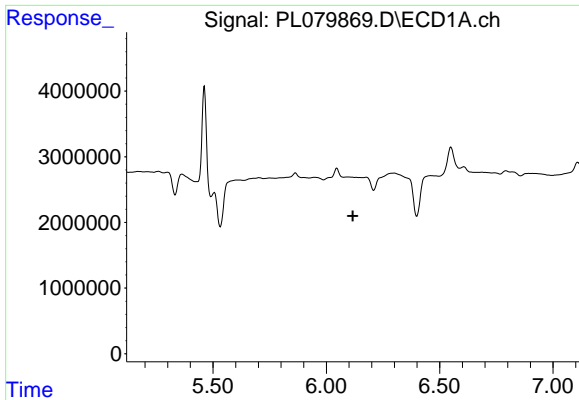
#12 4,4'-DDE

R.T.: 0.000 min
 Exp R.T.: 5.970 min
 Response: 0
 Conc: N.D.



#12 4,4'-DDE

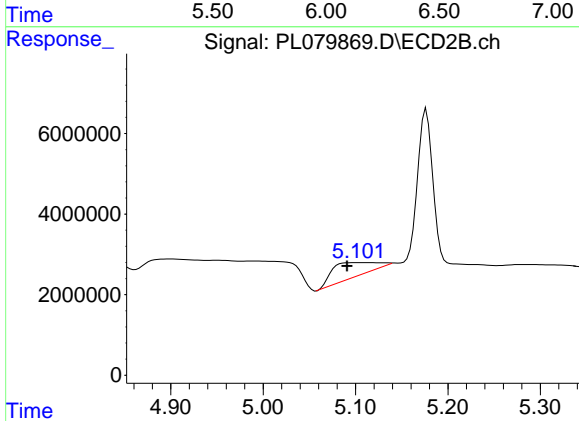
R.T.: 4.989 min
 Delta R.T.: 0.018 min
 Response: 1012552
 Conc: 0.32 ng/ml



#13 Dieldrin

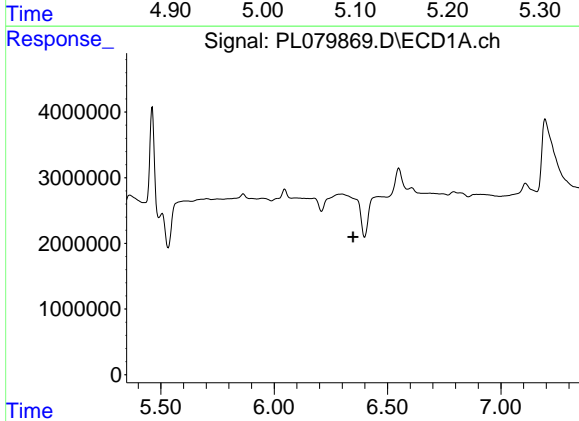
R.T.: 0.000 min
 Exp R.T. : 6.117 min
 Response: 0
 Conc: N.D.

Instrument :
 ECD_L
 ClientSampleId :
 HEXANE



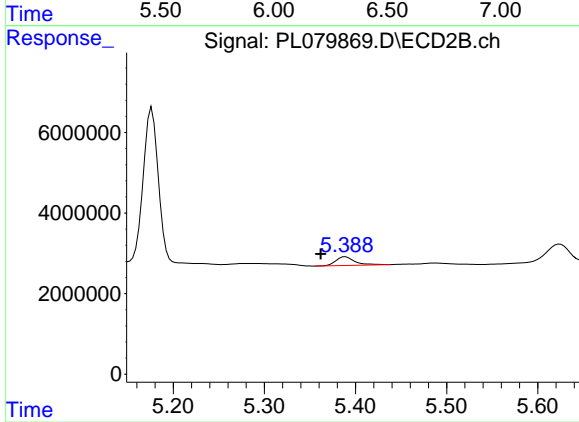
#13 Dieldrin

R.T.: 5.102 min
 Delta R.T.: 0.011 min
 Response: 12544595
 Conc: 3.62 ng/ml



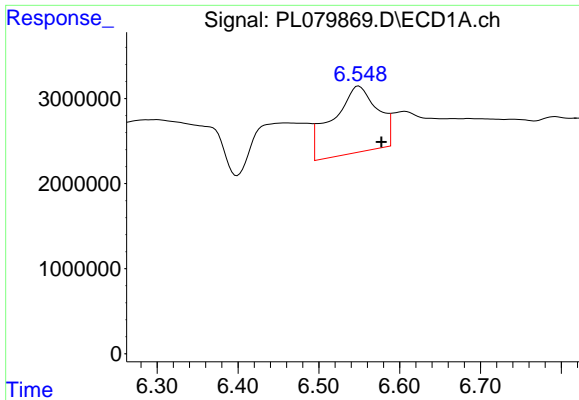
#14 Endrin

R.T.: 0.000 min
 Exp R.T. : 6.348 min
 Response: 0
 Conc: N.D.



#14 Endrin

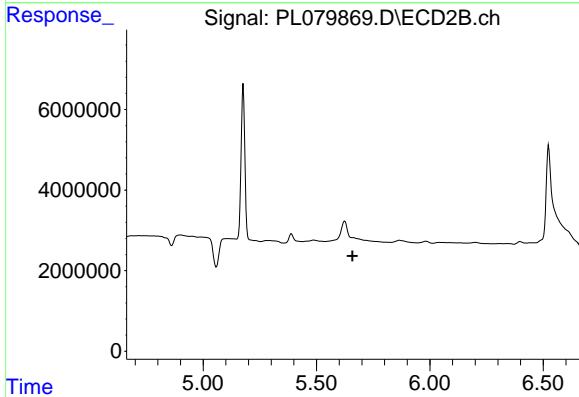
R.T.: 5.389 min
 Delta R.T.: 0.027 min
 Response: 3101874
 Conc: 1.05 ng/ml



#15 Endosulfan II

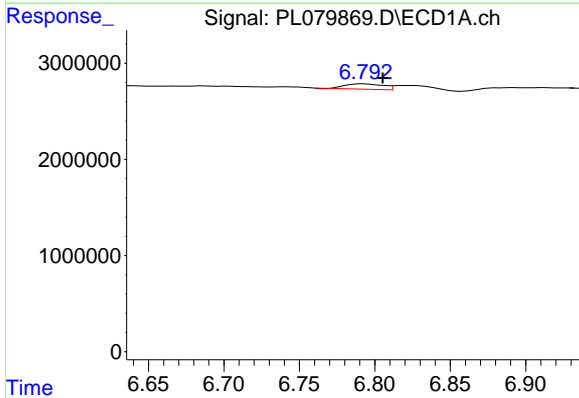
R.T.: 6.549 min
 Delta R.T.: -0.028 min
 Response: 30067809
 Conc: 12.00 ng/ml

Instrument :
 ECD_L
 ClientSampleId :
 HEXANE



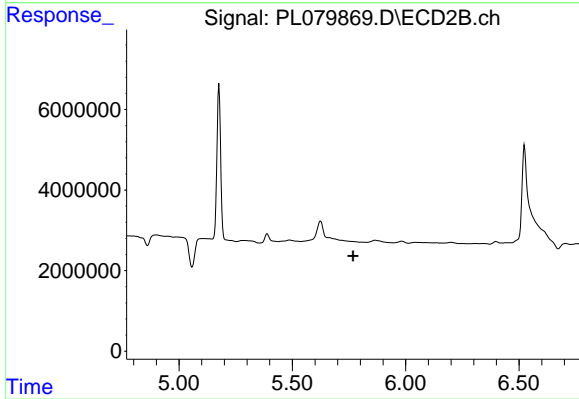
#15 Endosulfan II

R.T.: 0.000 min
 Exp R.T. : 5.659 min
 Response: 0
 Conc: N.D.



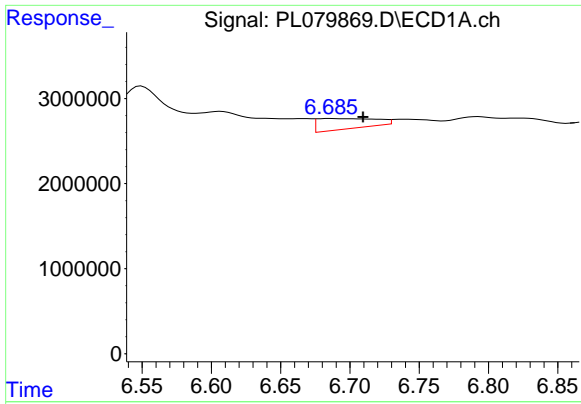
#17 4,4'-DDT

R.T.: 6.792 min
 Delta R.T.: -0.013 min
 Response: 960198
 Conc: 0.41 ng/ml



#17 4,4'-DDT

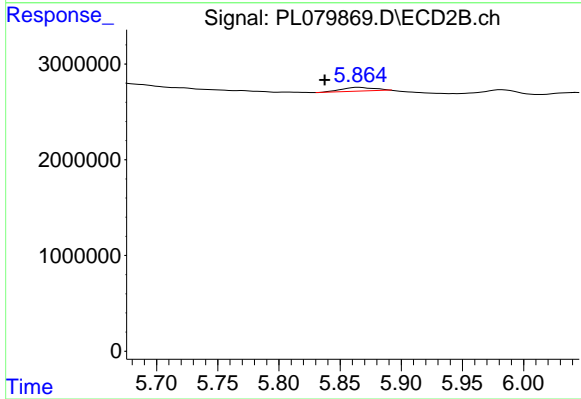
R.T.: 0.000 min
 Exp R.T. : 5.769 min
 Response: 0
 Conc: N.D.



#18 Endrin aldehyde

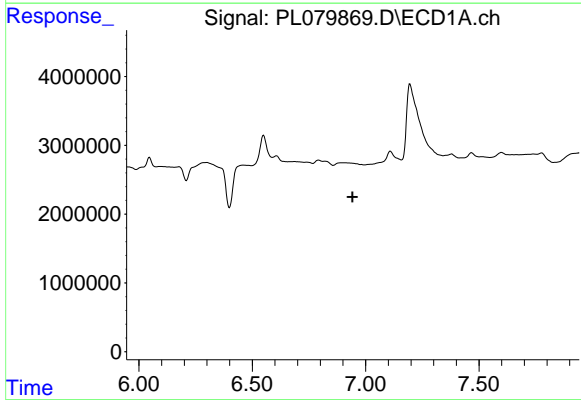
R.T.: 6.686 min
 Delta R.T.: -0.023 min
 Response: 3545507
 Conc: 1.89 ng/ml

Instrument :
 ECD_L
 ClientSampleId :
 HEXANE



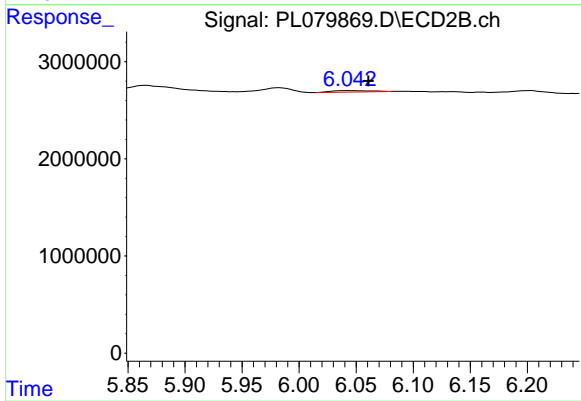
#18 Endrin aldehyde

R.T.: 5.866 min
 Delta R.T.: 0.028 min
 Response: 685773
 Conc: 0.31 ng/ml



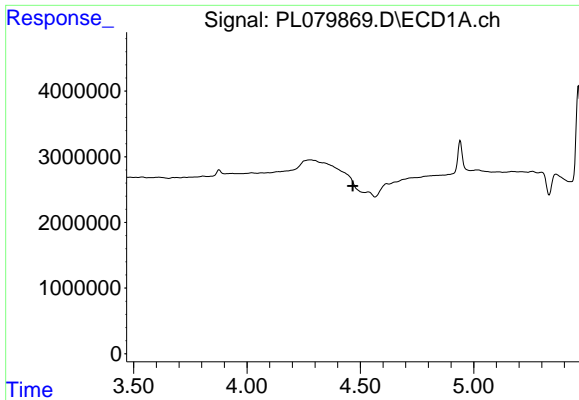
#19 Endosulfan Sulfate

R.T.: 0.000 min
 Exp R.T. : 6.942 min
 Response: 0
 Conc: N.D.



#19 Endosulfan Sulfate

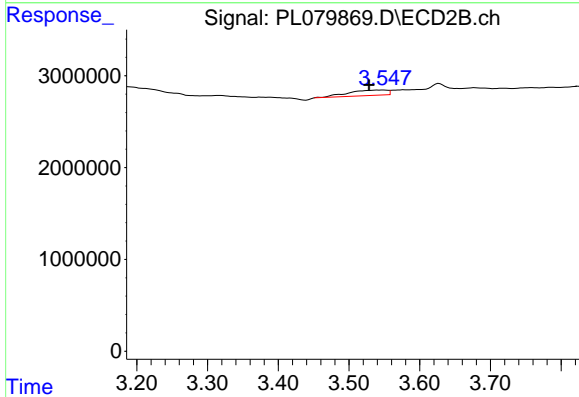
R.T.: 6.044 min
 Delta R.T.: -0.017 min
 Response: 349473
 Conc: 0.12 ng/ml



#23 Chlordane-1

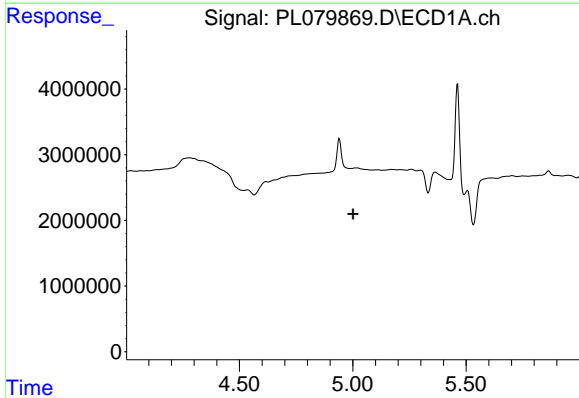
R.T.: 0.000 min
 Exp R.T.: 4.466 min
 Response: 0
 Conc: N.D.

Instrument :
 ECD_L
 ClientSampleId :
 HEXANE



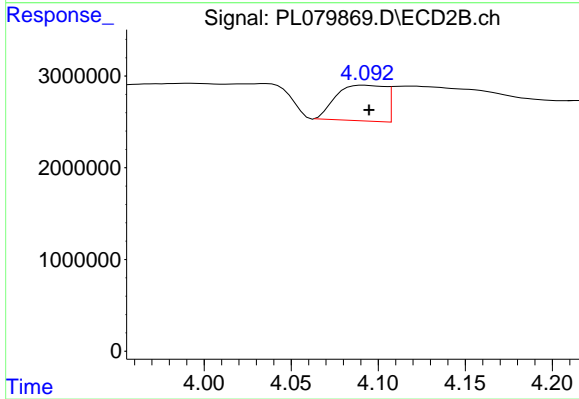
#23 Chlordane-1

R.T.: 3.549 min
 Delta R.T.: 0.020 min
 Response: 2192284
 Conc: 19.84 ng/ml



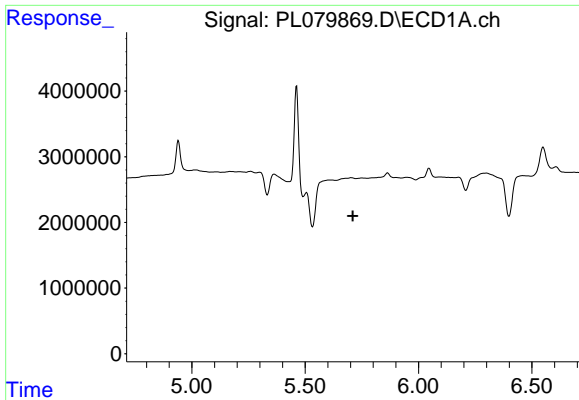
#24 Chlordane-2

R.T.: 0.000 min
 Exp R.T.: 5.001 min
 Response: 0
 Conc: N.D.



#24 Chlordane-2

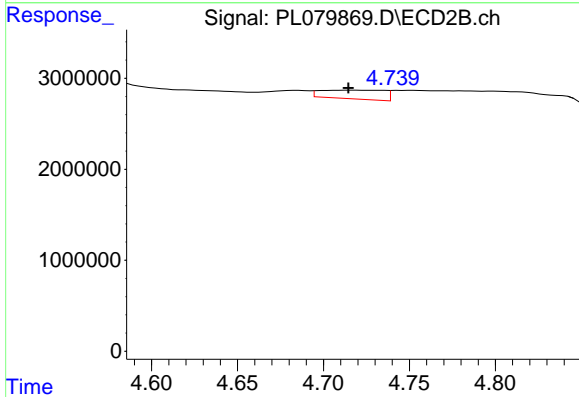
R.T.: 4.092 min
 Delta R.T.: -0.003 min
 Response: 7606675
 Conc: 64.93 ng/ml



#25 Chlordane-3

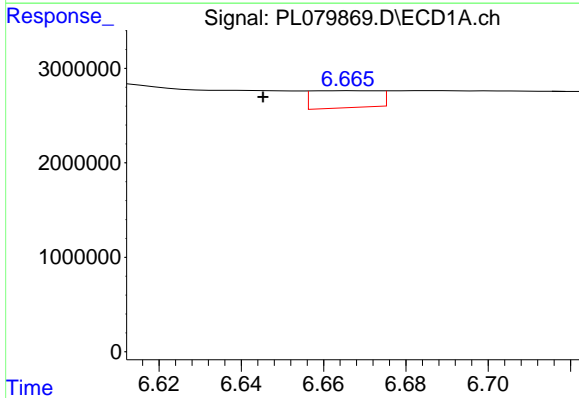
R.T.: 0.000 min
 Exp R.T.: 5.711 min
 Response: 0
 Conc: N.D.

Instrument :
 ECD_L
 ClientSampleId :
 HEXANE



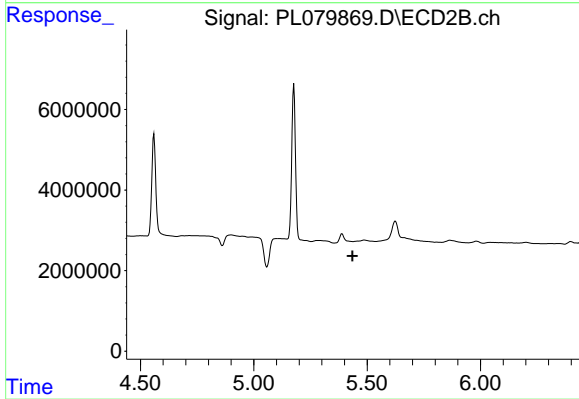
#25 Chlordane-3

R.T.: 4.716 min
 Delta R.T.: 0.001 min
 Response: 2470736
 Conc: 7.24 ng/ml



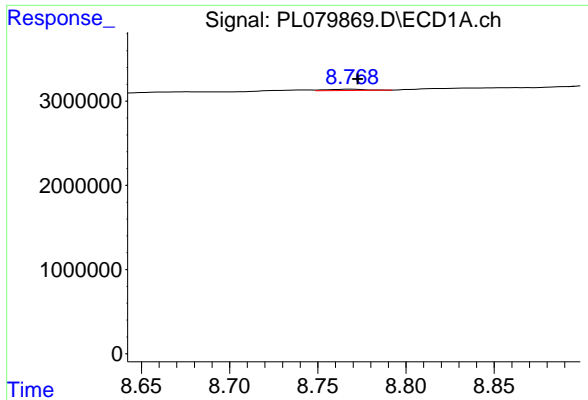
#27 Chlordane-5

R.T.: 6.666 min
 Delta R.T.: 0.021 min
 Response: 2030517
 Conc: 21.48 ng/ml



#27 Chlordane-5

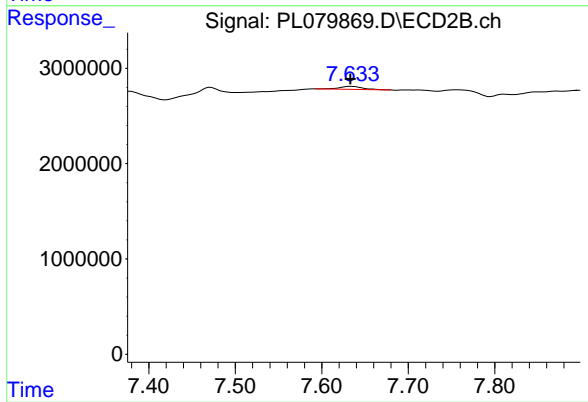
R.T.: 0.000 min
 Exp R.T.: 5.436 min
 Response: 0
 Conc: N.D.



#28 Decachlorobiphenyl

R.T.: 8.769 min
Delta R.T.: -0.003 min
Response: 226052
Conc: 0.12 ng/ml

Instrument :
ECD_L
ClientSampleId :
HEXANE



#28 Decachlorobiphenyl

R.T.: 7.634 min
Delta R.T.: 0.001 min
Response: 568059
Conc: 0.25 ng/ml