

Data Path : Z:\pestpcbsrv\HPCHEM1\ECD_L\Data\PL122619\
 Data File : PL055304.D
 Signal(s) : Signal #1: ECD1A.ch Signal #2: ECD2B.ch
 Acq On : 27 Dec 2019 09:05
 Operator : SG\AJ
 Sample : K6436-08
 Misc :
 ALS Vial : 57 Sample Multiplier: 1

Instrument :
 ECD_L
 ClientSampleId :

Integration File signal 1: autoint1.e
 Integration File signal 2: autoint2.e
 Quant Time: Dec 27 10:50:42 2019
 Quant Method : Z:\pestpcbsrv\HPCHEM1\ECD_L\methods\PL122119.M
 Quant Title : GC Extractables
 QLast Update : Sat Dec 21 05:21:06 2019
 Response via : Initial Calibration
 Integrator: ChemStation

Volume Inj. : 1 µl
 Signal #1 Phase : ZB-MR2 Signal #2 Phase: ZB-MR1
 Signal #1 Info : 30M x 0.32mm x0.2 Signal #2 Info : 30M x 0.32mm x0.5µm

Compound	RT#1	RT#2	Resp#1	Resp#2	ng/ml	ng/ml

System Monitoring Compounds						
1) SA Tetrachlo...	3.535	4.048	204.3E6	56315069	19.430	21.313
28) SA Decachlor...	8.310	9.145	178.2E6	46270017	19.210	20.961

Target Compounds

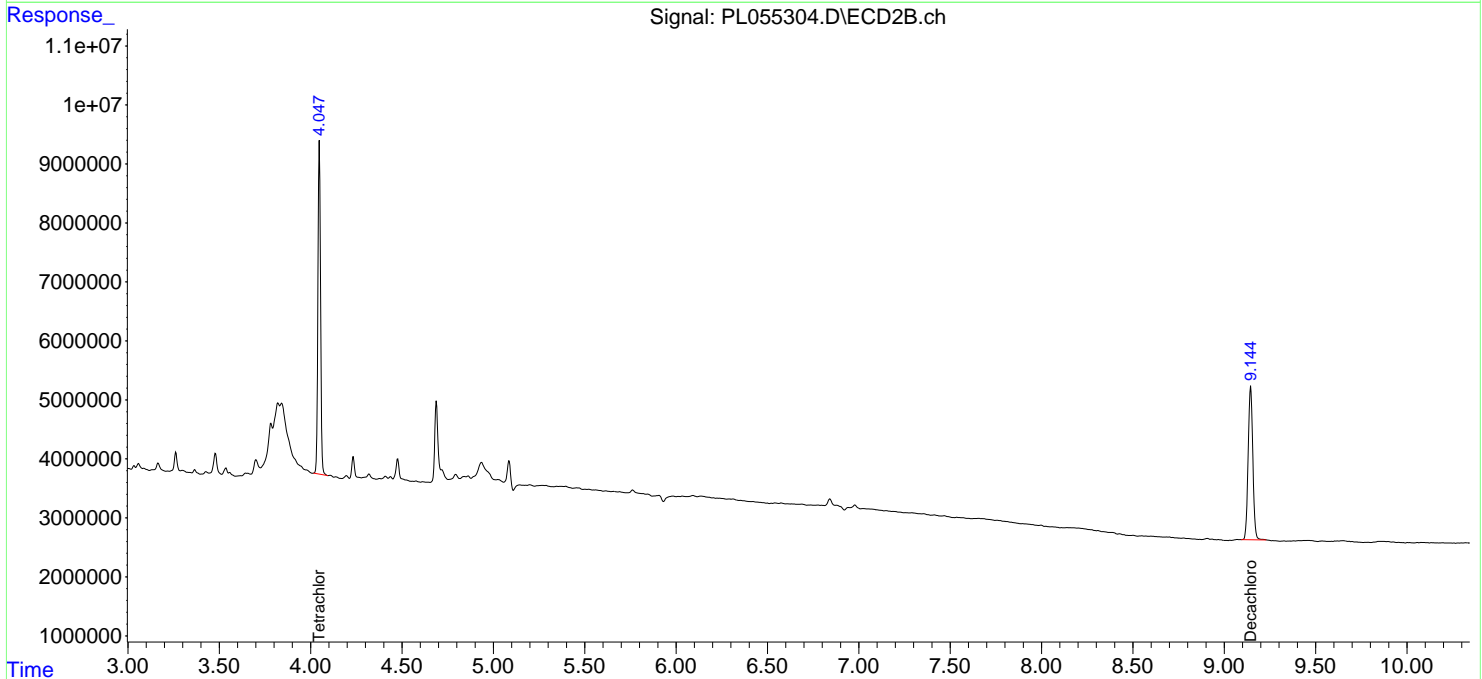
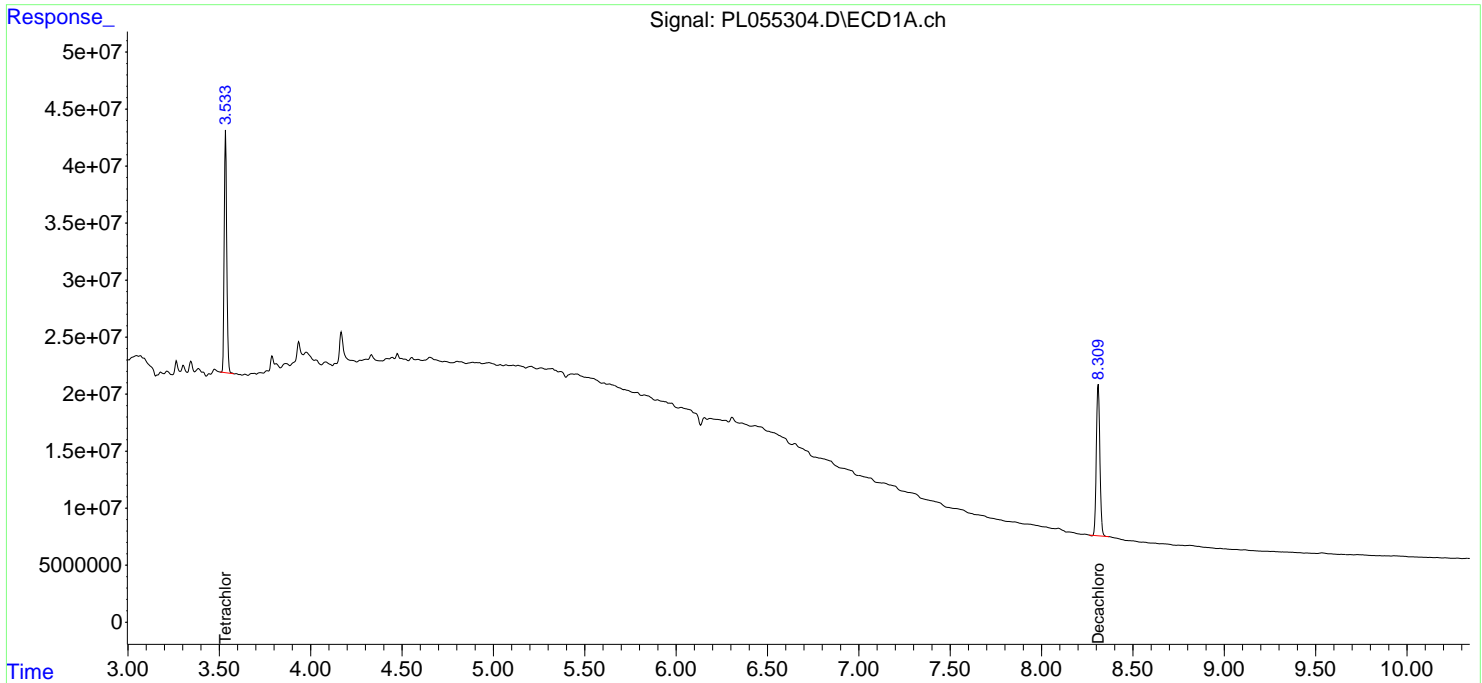
(f)=RT Delta > 1/2 Window (#)=Amounts differ by > 25% (m)=manual int.

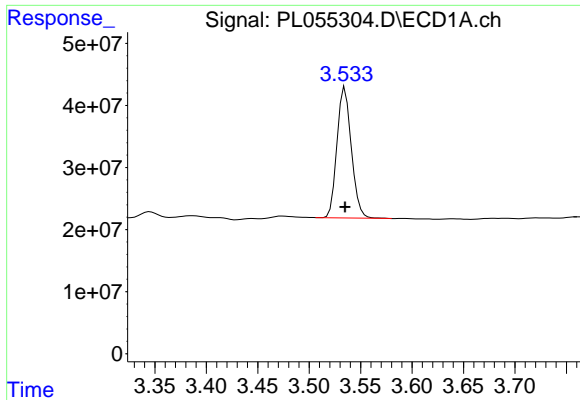
Data Path : Z:\pestpcbsrv\HPCHEM1\ECD_L\Data\PL122619\
 Data File : PL055304.D
 Signal(s) : Signal #1: ECD1A.ch Signal #2: ECD2B.ch
 Acq On : 27 Dec 2019 09:05
 Operator : SG\AJ
 Sample : K6436-08
 Misc :
 ALS Vial : 57 Sample Multiplier: 1

Instrument :
 ECD_L
 ClientSampled :

Integration File signal 1: autoint1.e
 Integration File signal 2: autoint2.e
 Quant Time: Dec 27 10:50:42 2019
 Quant Method : Z:\pestpcbsrv\HPCHEM1\ECD_L\methods\PL122119.M
 Quant Title : GC Extractables
 QLast Update : Sat Dec 21 05:21:06 2019
 Response via : Initial Calibration
 Integrator: ChemStation

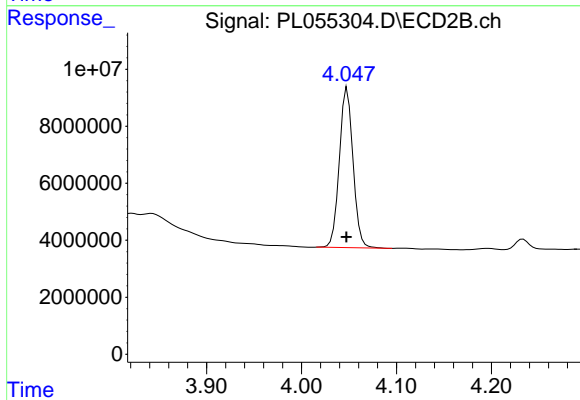
Volume Inj. : 1 µl
 Signal #1 Phase : ZB-MR2 Signal #2 Phase: ZB-MR1
 Signal #1 Info : 30M x 0.32mm x0.2 Signal #2 Info : 30M x 0.32mm x0.5µm



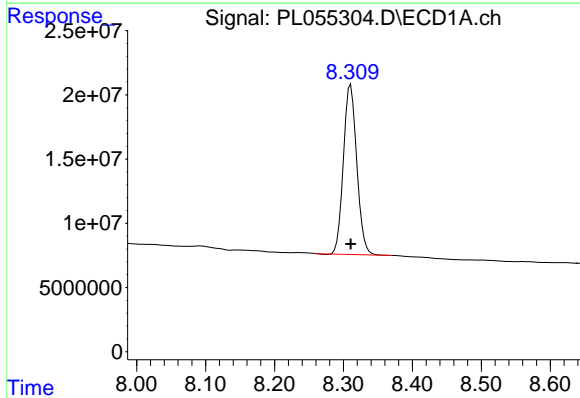


#1 Tetrachloro-m-xylene
R.T.: 3.535 min
Delta R.T.: 0.000 min
Response: 204337149
Conc: 19.43 ng/ml

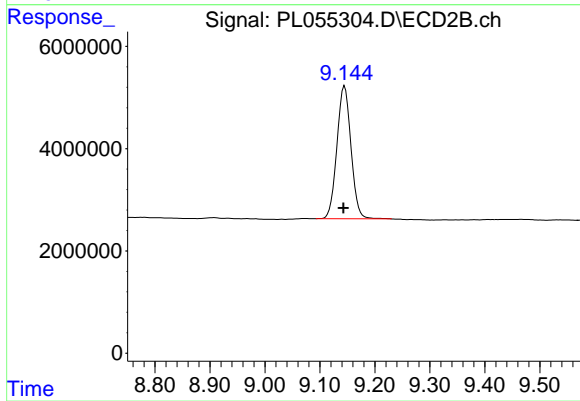
Instrument :
ECD_L
ClientSampled :



#1 Tetrachloro-m-xylene
R.T.: 4.048 min
Delta R.T.: 0.001 min
Response: 56315069
Conc: 21.31 ng/ml



#28 Decachlorobiphenyl
R.T.: 8.310 min
Delta R.T.: 0.000 min
Response: 178240360
Conc: 19.21 ng/ml



#28 Decachlorobiphenyl
R.T.: 9.145 min
Delta R.T.: 0.002 min
Response: 46270017
Conc: 20.96 ng/ml