

Data Path : Z:\pestpcbsrv\HPCHEM1\ECD_L\Data\PL122619\
 Data File : PL055254.D
 Signal(s) : Signal #1: ECD1A.ch Signal #2: ECD2B.ch
 Acq On : 26 Dec 2019 16:02
 Operator : SG\AJ
 Sample : PEM
 Misc :
 ALS Vial : 3 Sample Multiplier: 1

Instrument :
 ECD_L
 ClientSampled :
 PEM

Manual Integrations
 APPROVED

Ankita
 12/27/2019 12:33:22 PM

Integration File signal 1: autoint1.e
 Integration File signal 2: autoint2.e
 Quant Time: Dec 27 04:43:46 2019
 Quant Method : Z:\pestpcbsrv\HPCHEM1\ECD_L\methods\PL122119.M
 Quant Title : GC Extractables
 QLast Update : Sat Dec 21 05:21:06 2019
 Response via : Initial Calibration
 Integrator: ChemStation

Volume Inj. : 1 µl
 Signal #1 Phase : ZB-MR2 Signal #2 Phase: ZB-MR1
 Signal #1 Info : 30M x 0.32mm x0.2 Signal #2 Info : 30M x 0.32mm x0.5µm

	Compound	RT#1	RT#2	Resp#1	Resp#2	ng/ml	ng/ml

System Monitoring Compounds							
1)	SA Tetrachlo...	3.535	4.048	250.3E6	65325160	23.796	24.723
28)	SA Decachlor...	8.312	9.145	214.0E6	52949615	23.063	23.987
Target Compounds							
2)	A alpha-BHC	3.977	4.439	195.1E6	44883112	11.213	12.187
3)	MA gamma-BHC...	4.263	4.725	175.5E6	41673673	10.643	12.190
6)	B beta-BHC	4.514	4.896	80405224	21351139	11.725	13.002
14)	MA Endrin	6.108	6.760	689.2E6	120.1E6	54.225	55.944
16)	A 4,4'-DDD	6.231	6.881	33782981	8735157	3.517	4.595 #
17)	MA 4,4'-DDT	6.473	7.182	1156.0E6	231.8E6	114.834	118.123
18)	B Endrin al...	6.545	7.093	9922567	1322566	1.019m	0.685m#
20)	A Methoxychlor	7.018	7.642	1333.2E6	295.8E6	276.632	274.087
21)	B Endrin ke...	7.255	7.791	42479458	6404161	4.053	2.876 #

(f)=RT Delta > 1/2 Window (#)=Amounts differ by > 25% (m)=manual int.

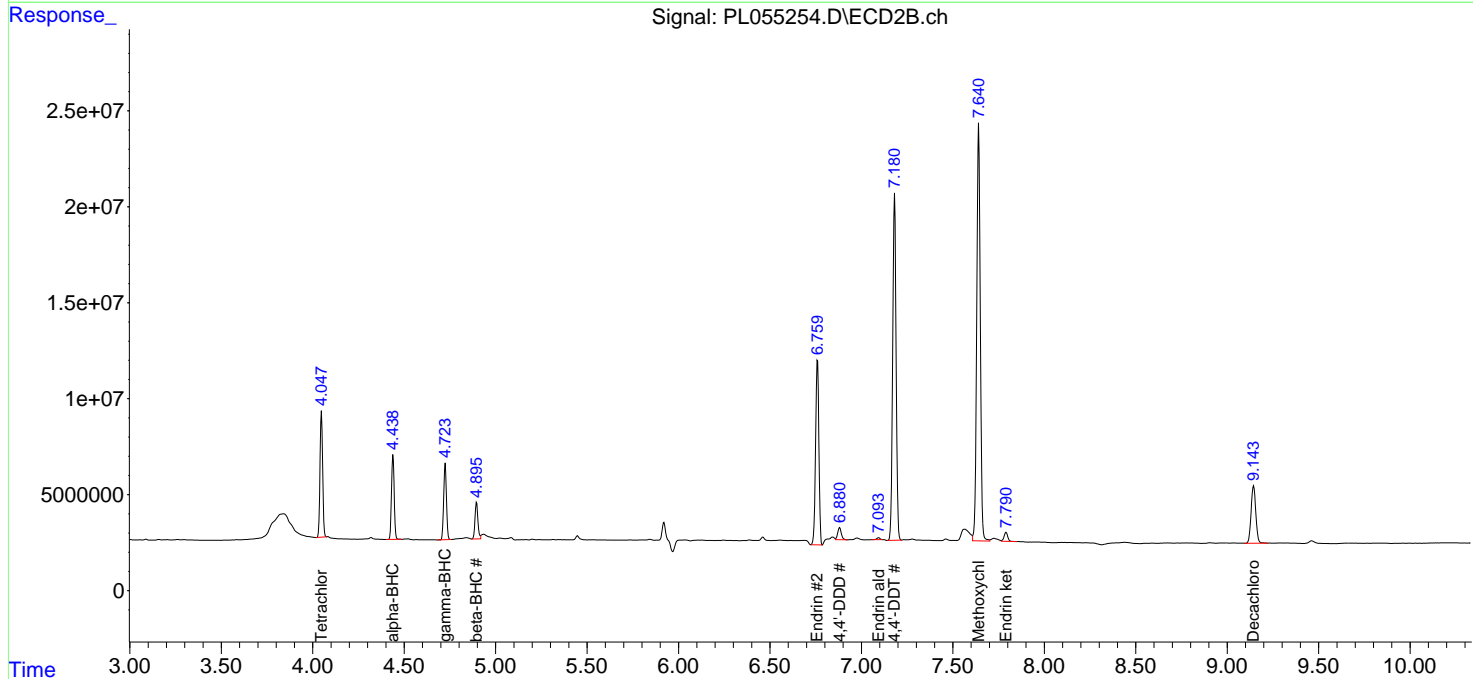
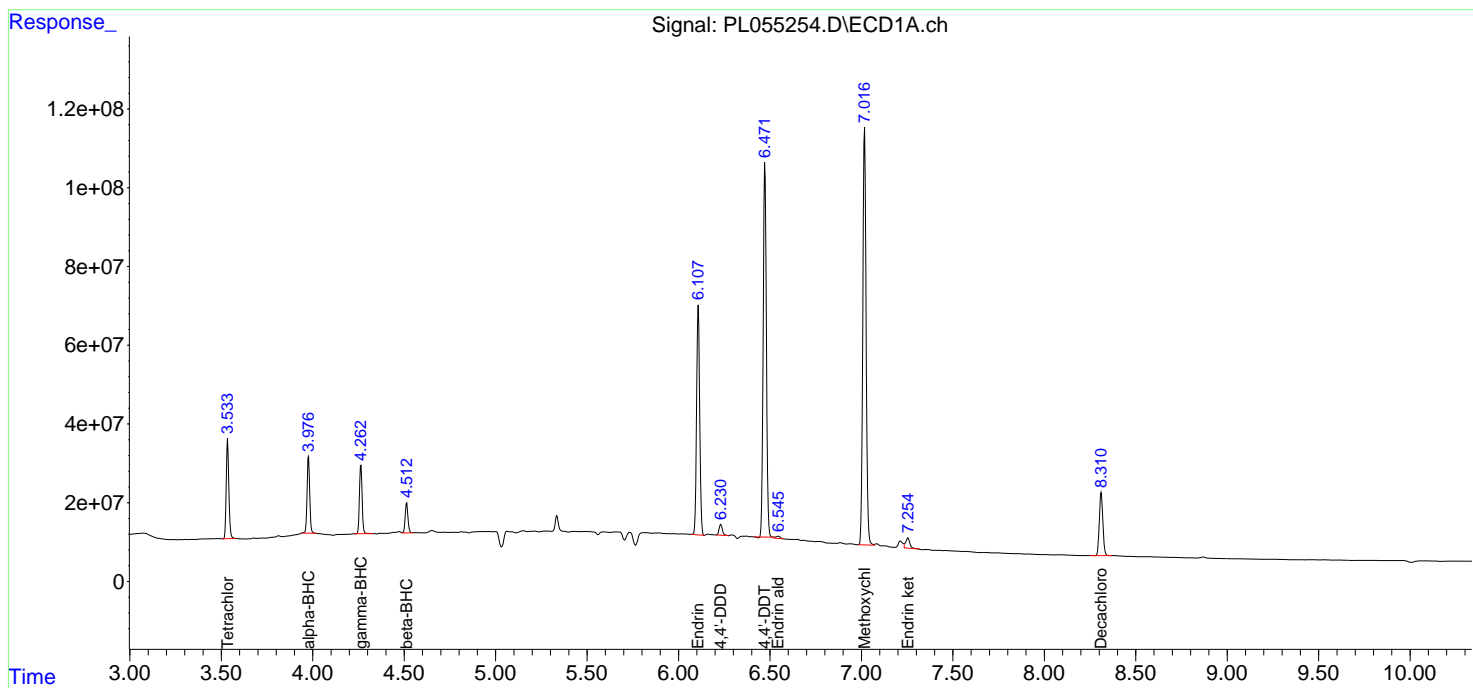
Data Path : Z:\pestpcbsrv\HPCHEM1\ECD_L\Data\PL122619\
 Data File : PL055254.D
 Signal(s) : Signal #1: ECD1A.ch Signal #2: ECD2B.ch
 Acq On : 26 Dec 2019 16:02
 Operator : SG\AJ
 Sample : PEM
 Misc :
 ALS Vial : 3 Sample Multiplier: 1

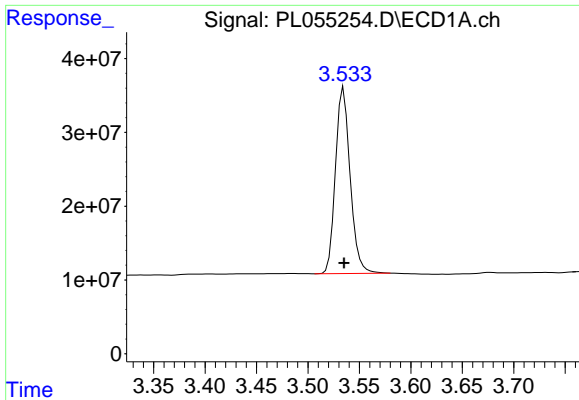
Instrument :
 ECD_L
 Client Sampled :
 PEM

Manual Integrations
APPROVED
 Ankita
 12/27/2019 12:33:22 PM

Integration File signal 1: autoint1.e
 Integration File signal 2: autoint2.e
 Quant Time: Dec 27 04:43:46 2019
 Quant Method : Z:\pestpcbsrv\HPCHEM1\ECD_L\methods\PL122119.M
 Quant Title : GC Extractables
 QLast Update : Sat Dec 21 05:21:06 2019
 Response via : Initial Calibration
 Integrator: ChemStation

Volume Inj. : 1 µl
 Signal #1 Phase : ZB-MR2 Signal #2 Phase: ZB-MR1
 Signal #1 Info : 30M x 0.32mm x0.2 Signal #2 Info : 30M x 0.32mm x0.5µm

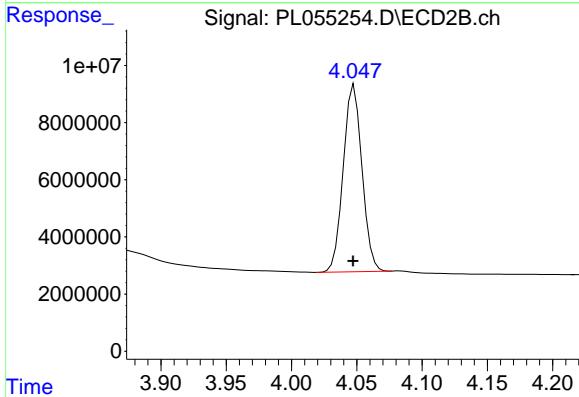




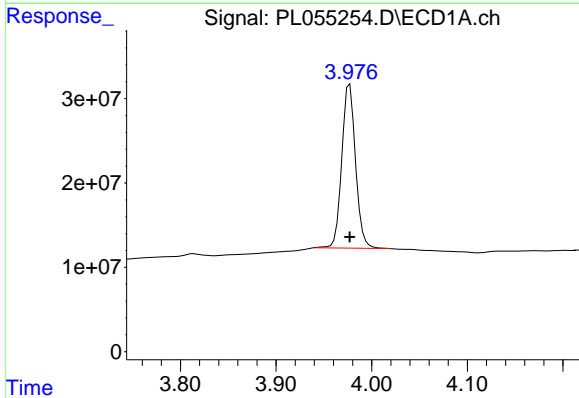
#1 Tetrachloro-m-xylene
 R.T.: 3.535 min
 Delta R.T.: 0.000 min
 Response: 250251459
 Conc: 23.80 ng/ml

Instrument :
 ECD_L
 ClientSampled :
 PEM

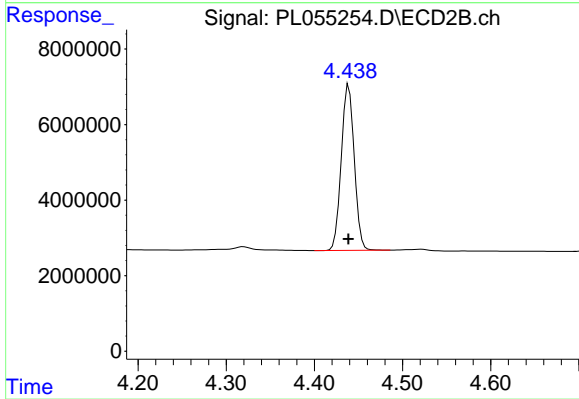
Manual Integrations
 APPROVED
 Ankita
 12/27/2019 12:33:22 PM



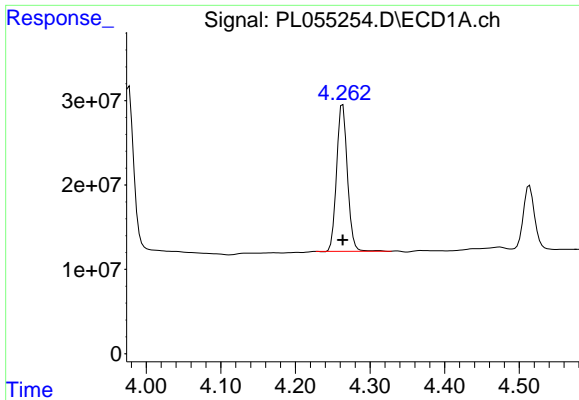
#1 Tetrachloro-m-xylene
 R.T.: 4.048 min
 Delta R.T.: 0.000 min
 Response: 65325160
 Conc: 24.72 ng/ml



#2 alpha-BHC
 R.T.: 3.977 min
 Delta R.T.: 0.000 min
 Response: 195084157
 Conc: 11.21 ng/ml



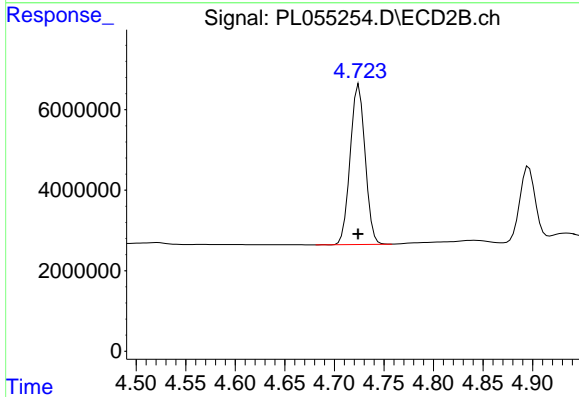
#2 alpha-BHC
 R.T.: 4.439 min
 Delta R.T.: 0.000 min
 Response: 44883112
 Conc: 12.19 ng/ml



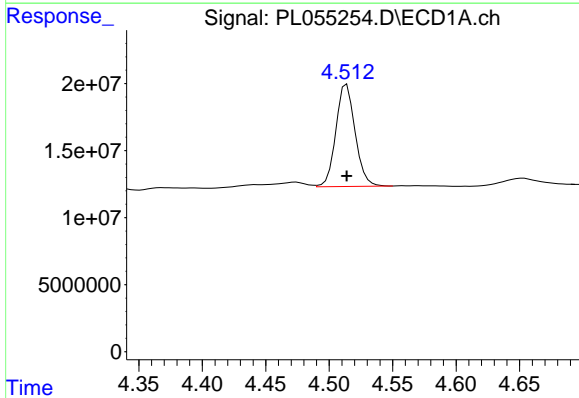
#3 gamma-BHC (Lindane)
 R.T.: 4.263 min
 Delta R.T.: 0.000 min
 Response: 175490348
 Conc: 10.64 ng/ml

Instrument :
 ECD_L
 ClientSampled :
 PEM

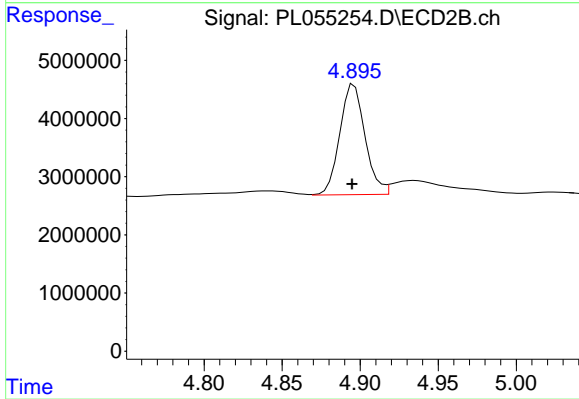
Manual Integrations
 APPROVED
 Ankita
 12/27/2019 12:33:22 PM



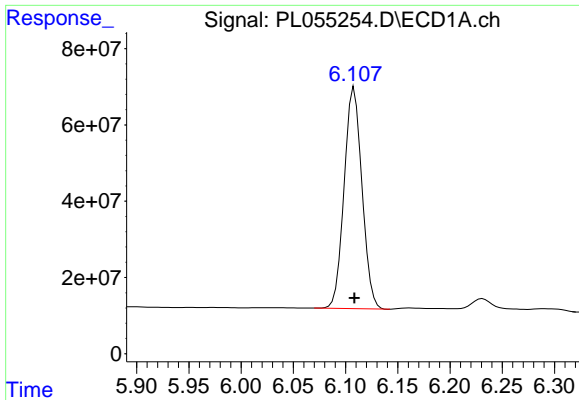
#3 gamma-BHC (Lindane)
 R.T.: 4.725 min
 Delta R.T.: 0.000 min
 Response: 41673673
 Conc: 12.19 ng/ml



#6 beta-BHC
 R.T.: 4.514 min
 Delta R.T.: 0.000 min
 Response: 80405224
 Conc: 11.73 ng/ml



#6 beta-BHC
 R.T.: 4.896 min
 Delta R.T.: 0.001 min
 Response: 21351139
 Conc: 13.00 ng/ml

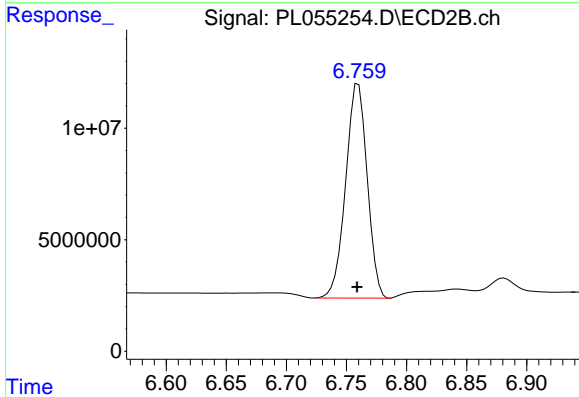


#14 Endrin

R.T.: 6.108 min
 Delta R.T.: 0.000 min
 Response: 689183459
 Conc: 54.23 ng/ml

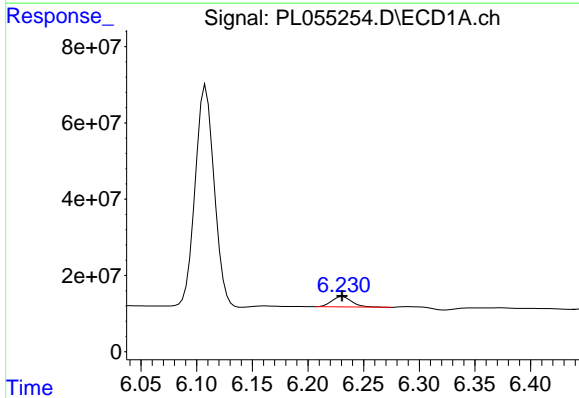
Instrument :
 ECD_L
 ClientSampled :
 PEM

Manual Integrations
 APPROVED
 Ankita
 12/27/2019 12:33:22 PM



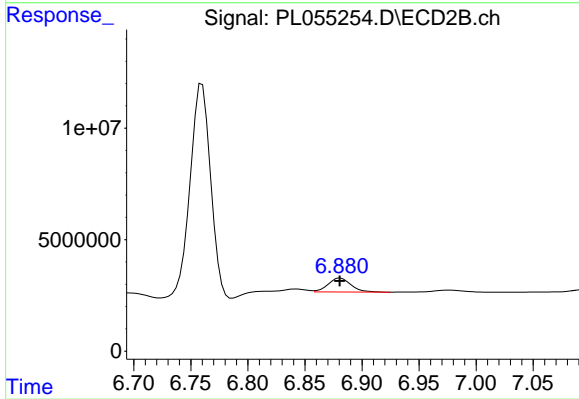
#14 Endrin

R.T.: 6.760 min
 Delta R.T.: 0.001 min
 Response: 120054197
 Conc: 55.94 ng/ml



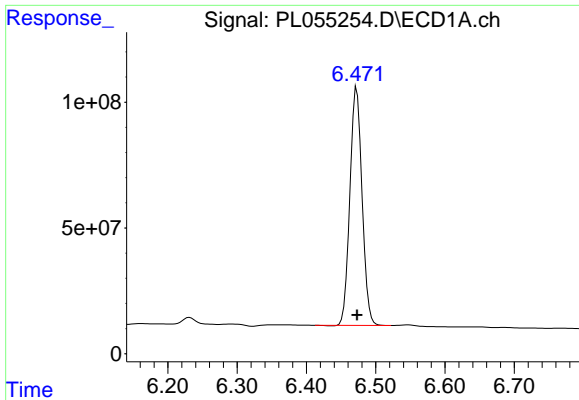
#16 4,4'-DDD

R.T.: 6.231 min
 Delta R.T.: 0.000 min
 Response: 33782981
 Conc: 3.52 ng/ml



#16 4,4'-DDD

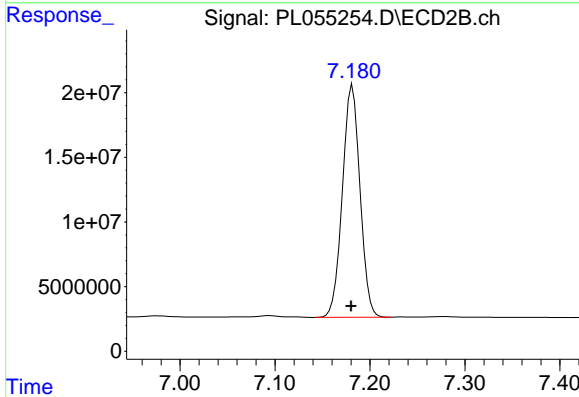
R.T.: 6.881 min
 Delta R.T.: 0.000 min
 Response: 8735157
 Conc: 4.59 ng/ml



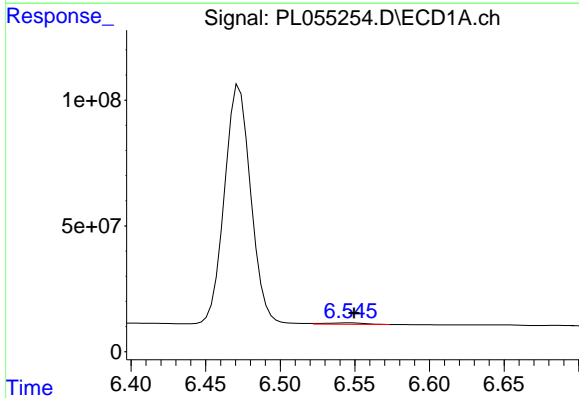
#17 4,4'-DDT
 R.T.: 6.473 min
 Delta R.T.: 0.000 min
 Response: 1156040502
 Conc: 114.83 ng/ml

Instrument :
 ECD_L
 ClientSampled :
 PEM

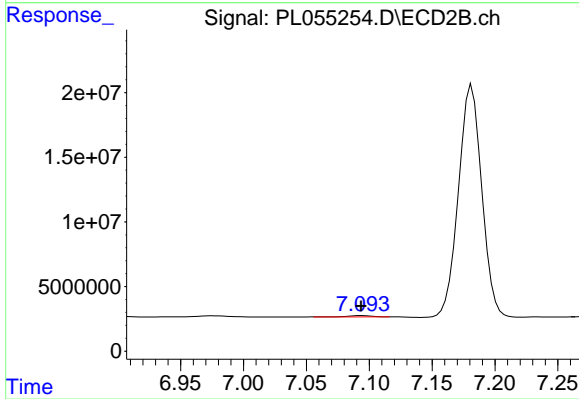
Manual Integrations
 APPROVED
 Ankita
 12/27/2019 12:33:22 PM



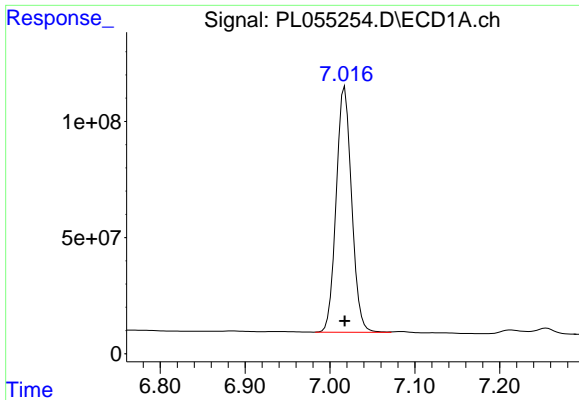
#17 4,4'-DDT
 R.T.: 7.182 min
 Delta R.T.: 0.002 min
 Response: 231830897
 Conc: 118.12 ng/ml



#18 Endrin aldehyde
 R.T.: 6.545 min
 Delta R.T.: -0.004 min
 Response: 9922567
 Conc: 1.02 ng/ml m



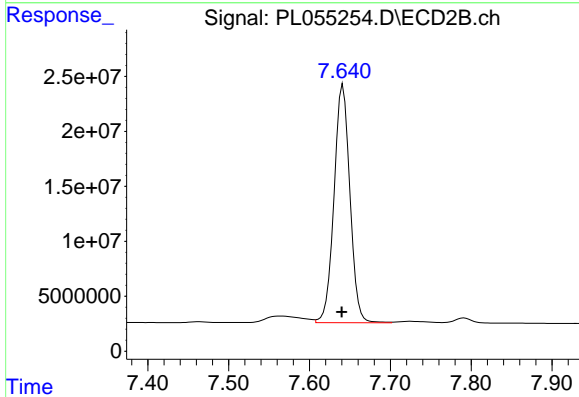
#18 Endrin aldehyde
 R.T.: 7.093 min
 Delta R.T.: 0.000 min
 Response: 1322566
 Conc: 0.69 ng/ml m



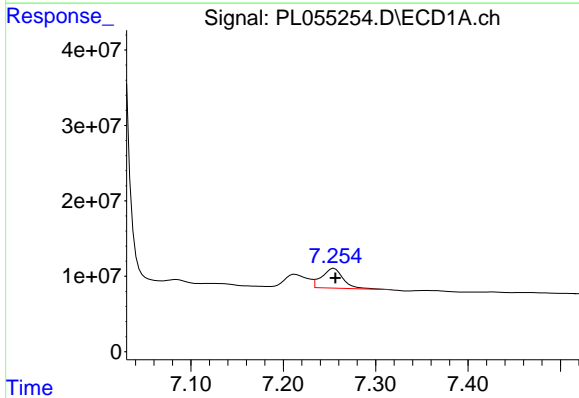
#20 Methoxychlor
 R.T.: 7.018 min
 Delta R.T.: 0.000 min
 Response: 1333206982
 Conc: 276.63 ng/ml

Instrument :
 ECD_L
 ClientSampled :
 PEM

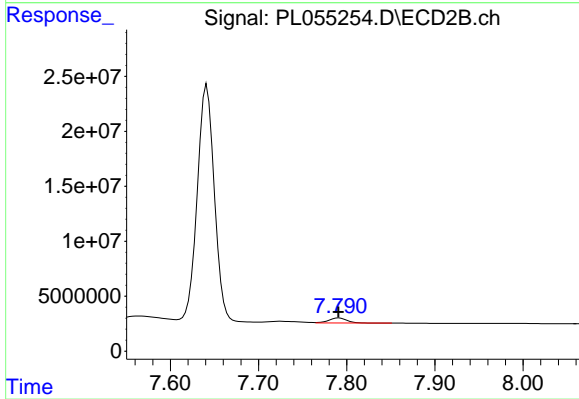
Manual Integrations
 APPROVED
 Ankita
 12/27/2019 12:33:22 PM



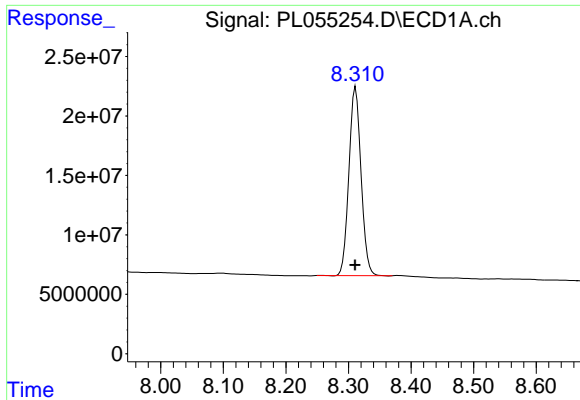
#20 Methoxychlor
 R.T.: 7.642 min
 Delta R.T.: 0.001 min
 Response: 295813819
 Conc: 274.09 ng/ml



#21 Endrin ketone
 R.T.: 7.255 min
 Delta R.T.: -0.001 min
 Response: 42479458
 Conc: 4.05 ng/ml



#21 Endrin ketone
 R.T.: 7.791 min
 Delta R.T.: 0.001 min
 Response: 6404161
 Conc: 2.88 ng/ml



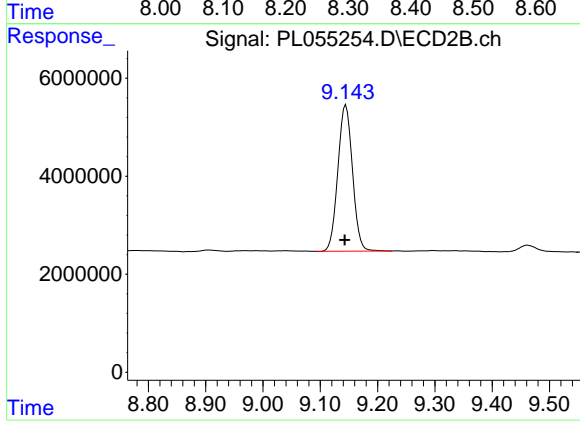
#28 Decachlorobiphenyl

R.T.: 8.312 min
Delta R.T.: 0.001 min
Response: 213994964
Conc: 23.06 ng/ml

Instrument :
ECD_L
ClientSampled :
PEM

Manual Integrations
APPROVED

Ankita
12/27/2019 12:33:22 PM



#28 Decachlorobiphenyl

R.T.: 9.145 min
Delta R.T.: 0.002 min
Response: 52949615
Conc: 23.99 ng/ml