

Data Path : Z:\pestpcbsrv\HPCHEM1\ECD\_L\Data\PL122623\  
 Data File : PL087492.D  
 Signal(s) : Signal #1: ECD1A.ch Signal #2: ECD2B.ch  
 Acq On : 26 Dec 2023 15:44  
 Operator : AR\AJ  
 Sample : 06018-01  
 Misc :  
 ALS Vial : 23 Sample Multiplier: 1

Instrument :  
 ECD\_L  
 ClientSampleId :

Integration File signal 1: autoint1.e  
 Integration File signal 2: autoint2.e  
 Quant Time: Dec 26 20:34:06 2023  
 Quant Method : Z:\pestpcbsrv\HPCHEM1\ECD\_L\methods\PL121523.M  
 Quant Title : GC Extractables  
 QLast Update : Sat Dec 16 04:03:23 2023  
 Response via : Initial Calibration  
 Integrator: ChemStation

Volume Inj. : 1 µl  
 Signal #1 Phase : ZB-MR2 Signal #2 Phase: ZB-MR1  
 Signal #1 Info : 30M x 0.32mm x0.2 Signal #2 Info : 30M x 0.32mm x0.5µm

	Compound	RT#1	RT#2	Resp#1	Resp#2	ng/ml	ng/ml
-----							
System Monitoring Compounds							
1)	SA Tetrachlo...	3.422	2.677	31150852	13068754	8.277	7.764
28)	SA Decachlor...	8.979	7.864	31999569	14677574	9.384	8.690
Target Compounds							
3)	MA gamma-BHC...	0.000	3.544f	0	112379	N.D.	0.046 #
4)	MA Heptachlor	4.835f	3.873	550674	-21317	0.103	N.D. #
5)	MB Aldrin	0.000	4.147	0	219190	N.D.	0.091 #
6)	B beta-BHC	4.431	0.000	733617	0	0.319	N.D. #
7)	B delta-BHC	4.660	4.045	1206503	49350	0.231	0.020 #
8)	B Heptachlo...	5.613f	4.626f	212491	51658	0.045	0.023 #
9)	A Endosulfan I	0.000	5.024	0	2772389	N.D.	1.283 #
10)	B gamma-Chl...	5.859f	4.926f	1730878	1744932	0.357	0.763 #
11)	B alpha-Chl...	0.000	4.974	0	2938178	N.D.	1.273 #
12)	B 4,4'-DDE	6.092	5.156	874260	169664	0.211	0.085 #
13)	MA Dieldrin	0.000	5.288	0	4994918	N.D.	2.242 #
14)	MA Endrin	0.000	5.576	0	140183	N.D.	0.070 #
15)	B Endosulfa...	6.692	5.869	1308950	-72564	0.326	N.D. #
16)	A 4,4'-DDD	6.628	0.000	4087684	0	1.237	N.D. #
17)	MA 4,4'-DDT	0.000	5.960f	0	450135	N.D.	0.244 #
18)	B Endrin al...	0.000	6.057	0	458557	N.D.	0.312 #
19)	B Endosulfa...	0.000	6.261	0	193259	N.D.	0.103 #
23)	Chlordane-1	0.000	3.680	0	135459	N.D.	2.184 #
24)	Chlordane-2	5.113	4.265	367915	-39515	2.112	N.D. #
25)	Chlordane-3	5.859f	4.926f	1730878	1744932	2.483	7.893 #
26)	Chlordane-4	0.000	4.974	0	2938178	N.D.	12.620 #
27)	Chlordane-5	0.000	5.633	0	272874	N.D.	4.218 #

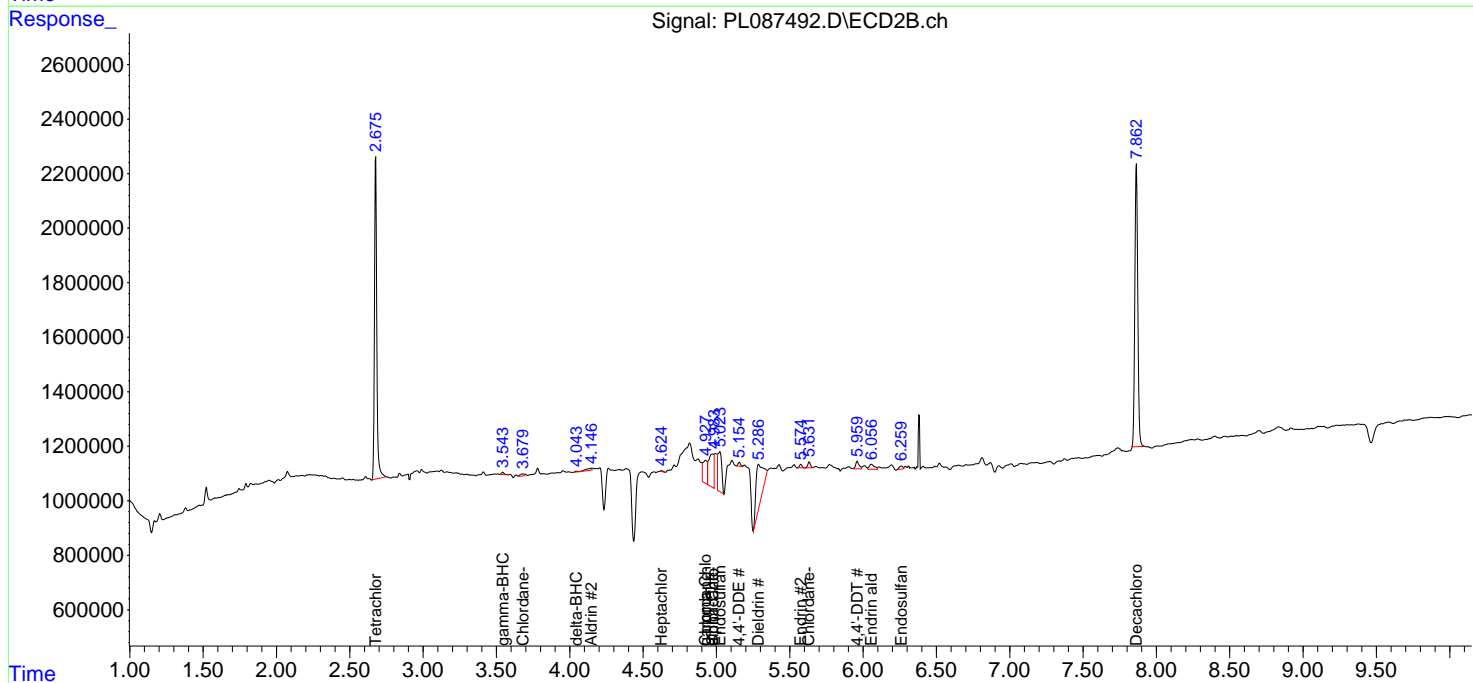
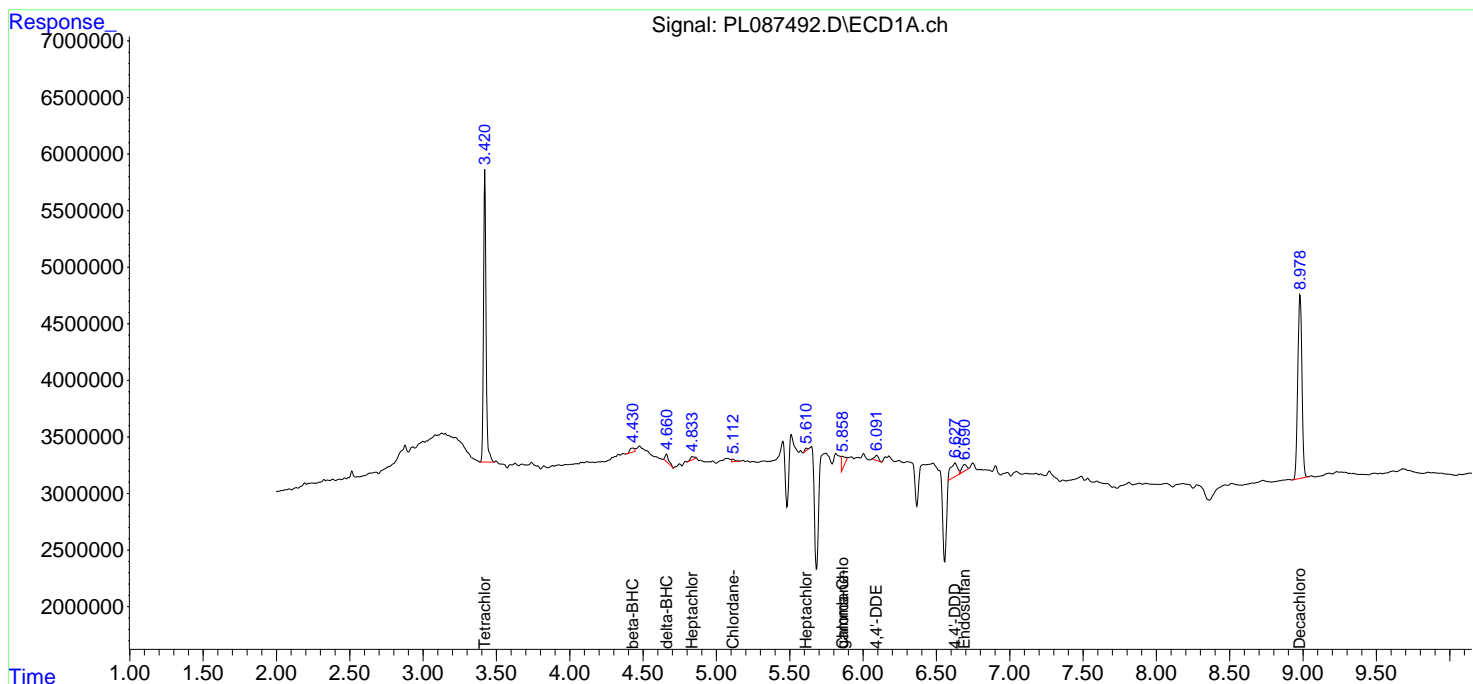
(f)=RT Delta > 1/2 Window (#)=Amounts differ by > 25% (m)=manual int.

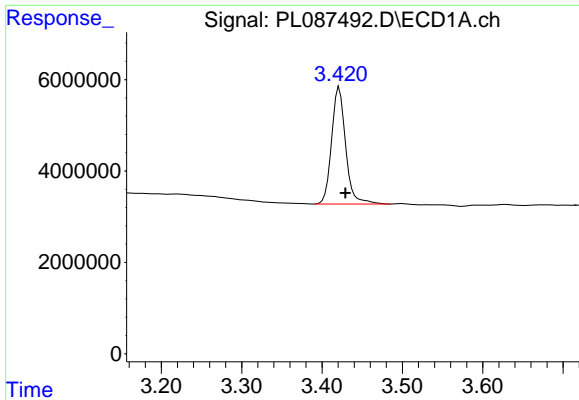
Data Path : Z:\pestpcbsrv\HPCHEM1\ECD\_L\Data\PL122623\  
 Data File : PL087492.D  
 Signal(s) : Signal #1: ECD1A.ch Signal #2: ECD2B.ch  
 Acq On : 26 Dec 2023 15:44  
 Operator : AR\AJ  
 Sample : 06018-01  
 Misc :  
 ALS Vial : 23 Sample Multiplier: 1

Instrument :  
 ECD\_L  
 ClientSampleId :

Integration File signal 1: autoint1.e  
 Integration File signal 2: autoint2.e  
 Quant Time: Dec 26 20:34:06 2023  
 Quant Method : Z:\pestpcbsrv\HPCHEM1\ECD\_L\methods\PL121523.M  
 Quant Title : GC Extractables  
 QLast Update : Sat Dec 16 04:03:23 2023  
 Response via : Initial Calibration  
 Integrator: ChemStation

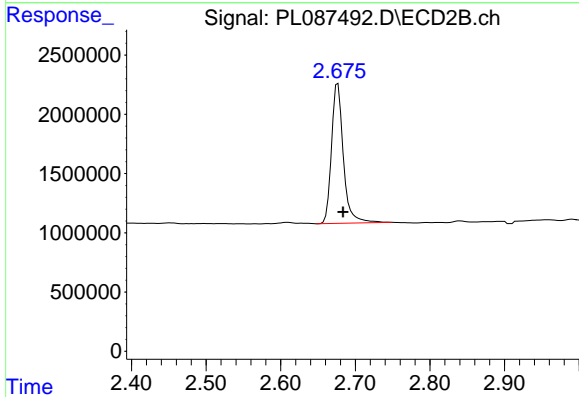
Volume Inj. : 1 µl  
 Signal #1 Phase : ZB-MR2 Signal #2 Phase: ZB-MR1  
 Signal #1 Info : 30M x 0.32mm x0.2 Signal #2 Info : 30M x 0.32mm x0.5µm



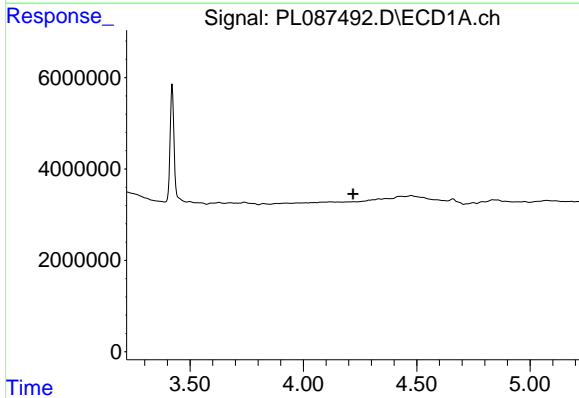


#1 Tetrachloro-m-xylene  
 R.T.: 3.422 min  
 Delta R.T.: -0.007 min  
 Response: 31150852  
 Conc: 8.28 ng/ml

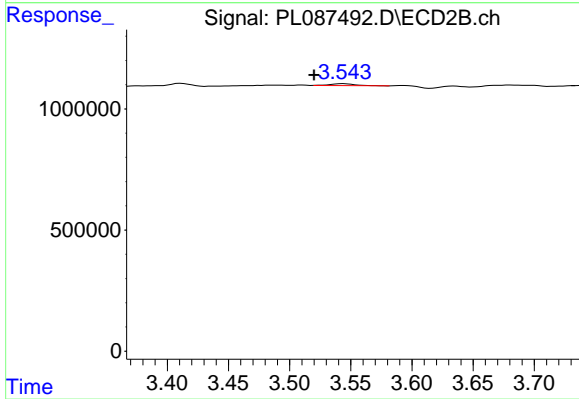
Instrument :  
 ECD\_L  
 ClientSampleId :



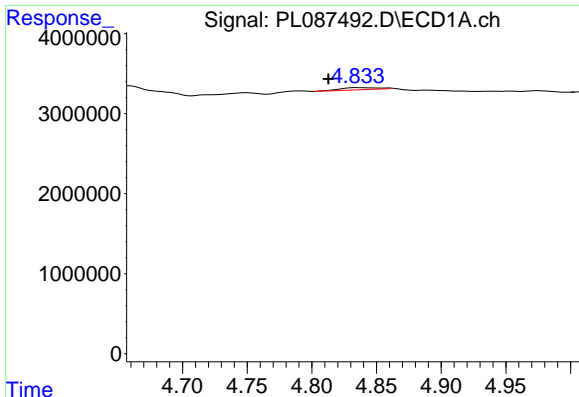
#1 Tetrachloro-m-xylene  
 R.T.: 2.677 min  
 Delta R.T.: -0.007 min  
 Response: 13068754  
 Conc: 7.76 ng/ml



#3 gamma-BHC (Lindane)  
 R.T.: 0.000 min  
 Exp R.T. : 4.220 min  
 Response: 0  
 Conc: N.D.



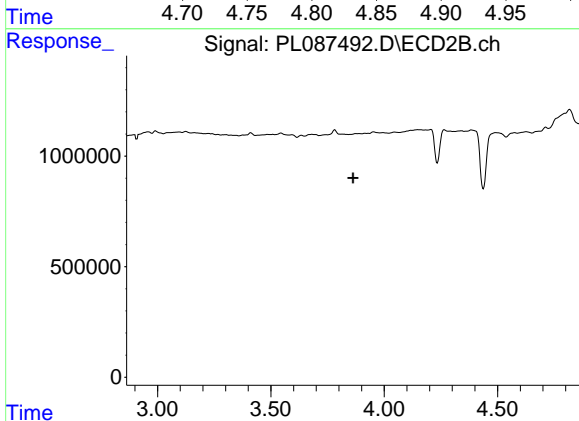
#3 gamma-BHC (Lindane)  
 R.T.: 3.544 min  
 Delta R.T.: 0.024 min  
 Response: 112379  
 Conc: 0.05 ng/ml



#4 Heptachlor

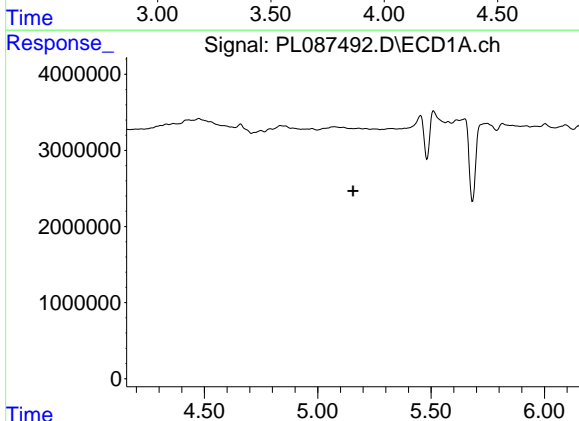
R.T.: 4.835 min  
 Delta R.T.: 0.022 min  
 Response: 550674  
 Conc: 0.10 ng/ml

Instrument :  
 ECD\_L  
 ClientSampleId :



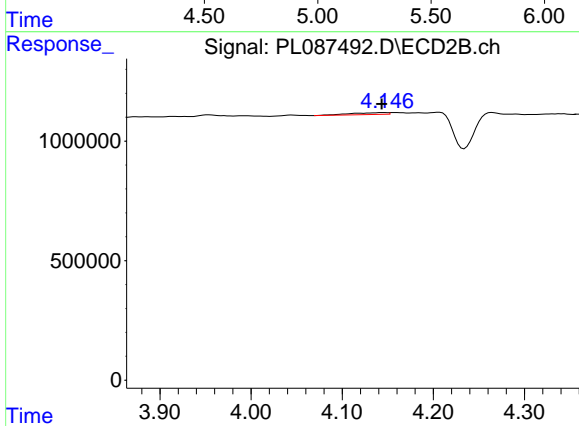
#4 Heptachlor

R.T.: 3.873 min  
 Delta R.T.: 0.010 min  
 Response: -21317  
 Conc: N.D.



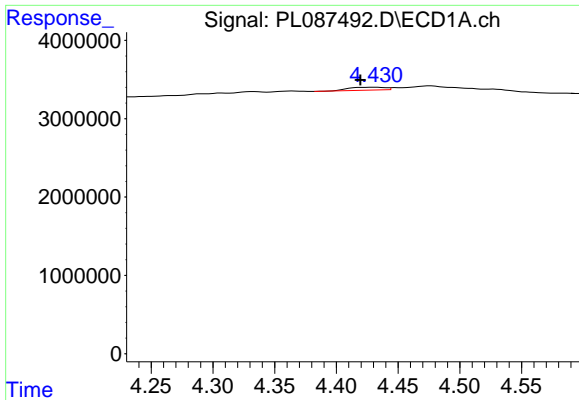
#5 Aldrin

R.T.: 0.000 min  
 Exp R.T. : 5.156 min  
 Response: 0  
 Conc: N.D.



#5 Aldrin

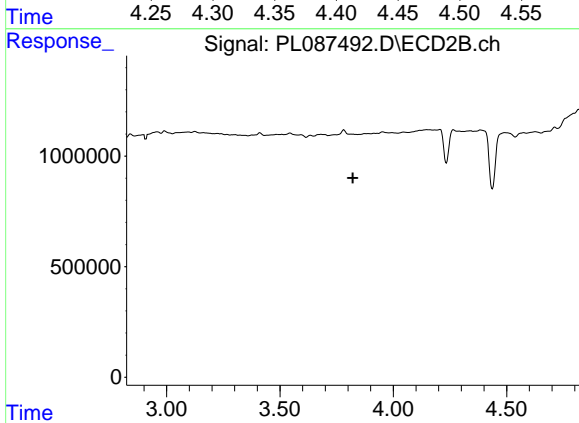
R.T.: 4.147 min  
 Delta R.T.: 0.004 min  
 Response: 219190  
 Conc: 0.09 ng/ml



#6 beta-BHC

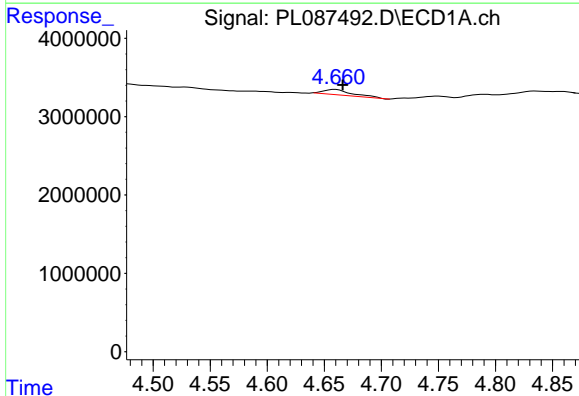
R.T.: 4.431 min  
 Delta R.T.: 0.012 min  
 Response: 733617  
 Conc: 0.32 ng/ml

Instrument :  
 ECD\_L  
 ClientSampleId :



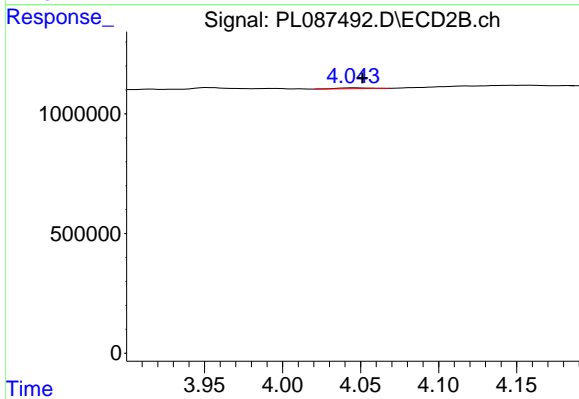
#6 beta-BHC

R.T.: 0.000 min  
 Exp R.T. : 3.822 min  
 Response: 0  
 Conc: N.D.



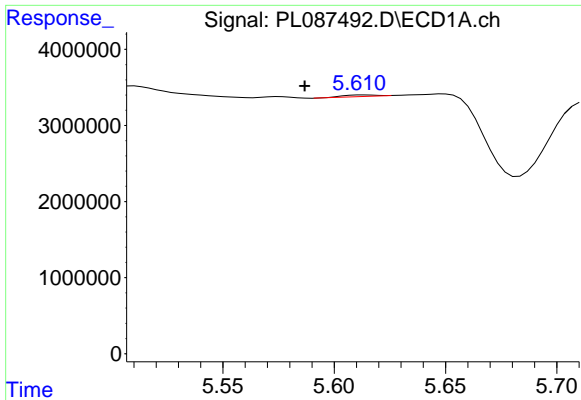
#7 delta-BHC

R.T.: 4.660 min  
 Delta R.T.: -0.006 min  
 Response: 1206503  
 Conc: 0.23 ng/ml



#7 delta-BHC

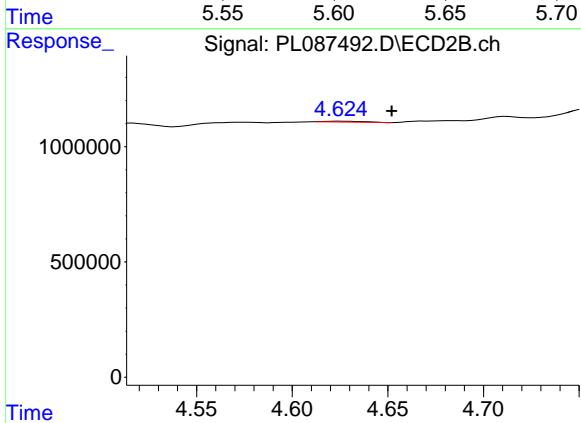
R.T.: 4.045 min  
 Delta R.T.: -0.006 min  
 Response: 49350  
 Conc: 0.02 ng/ml



#8 Heptachlor epoxide

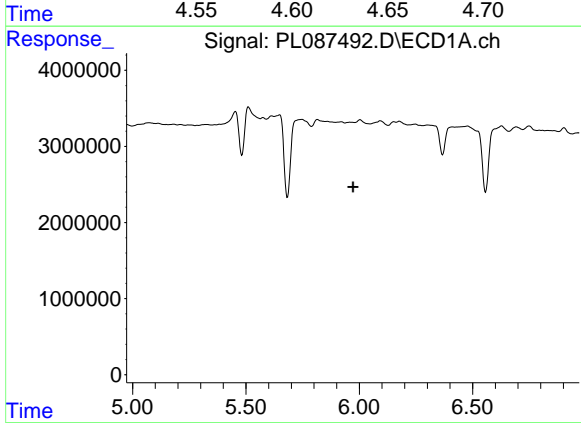
R.T.: 5.613 min  
 Delta R.T.: 0.026 min  
 Response: 212491  
 Conc: 0.05 ng/ml

Instrument :  
 ECD\_L  
 ClientSampleId :



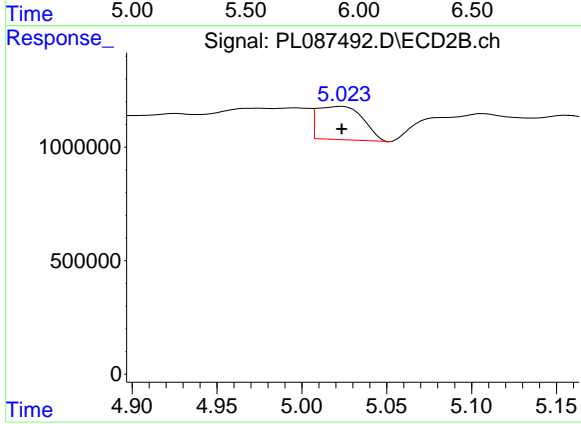
#8 Heptachlor epoxide

R.T.: 4.626 min  
 Delta R.T.: -0.026 min  
 Response: 51658  
 Conc: 0.02 ng/ml



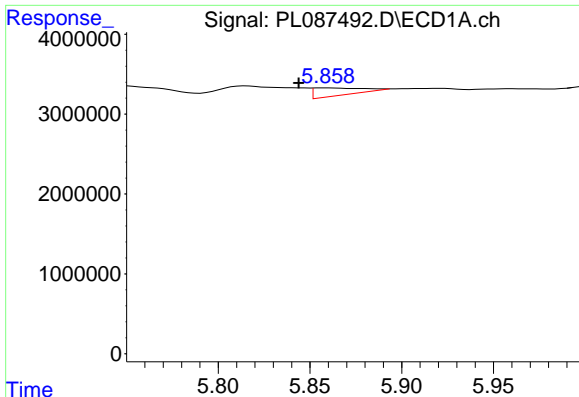
#9 Endosulfan I

R.T.: 0.000 min  
 Exp R.T. : 5.973 min  
 Response: 0  
 Conc: N.D.



#9 Endosulfan I

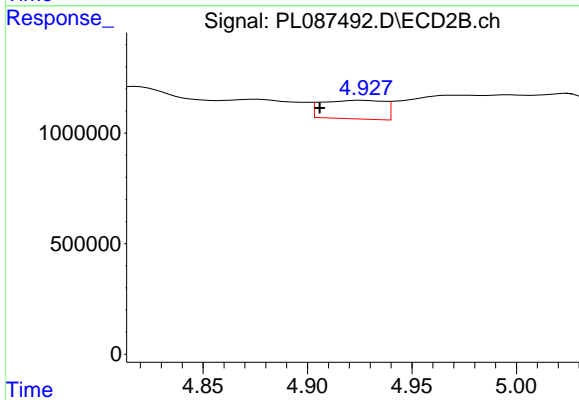
R.T.: 5.024 min  
 Delta R.T.: 0.000 min  
 Response: 2772389  
 Conc: 1.28 ng/ml



#10 gamma-Chlordane

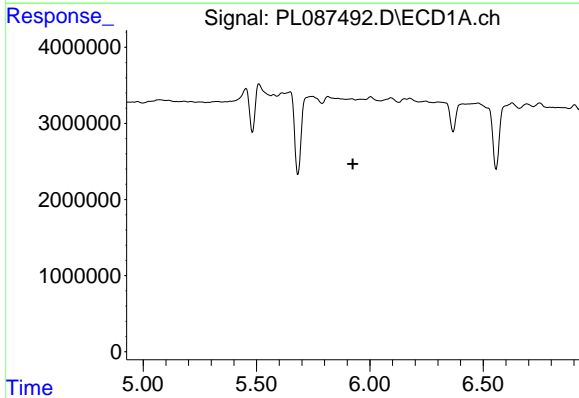
R.T.: 5.859 min  
 Delta R.T.: 0.015 min  
 Response: 1730878  
 Conc: 0.36 ng/ml

Instrument :  
 ECD\_L  
 ClientSampleId :



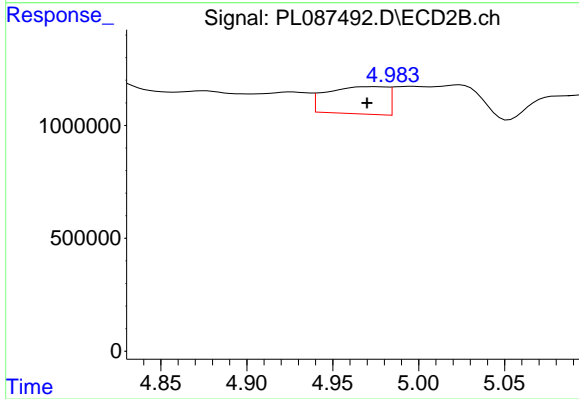
#10 gamma-Chlordane

R.T.: 4.926 min  
 Delta R.T.: 0.020 min  
 Response: 1744932  
 Conc: 0.76 ng/ml



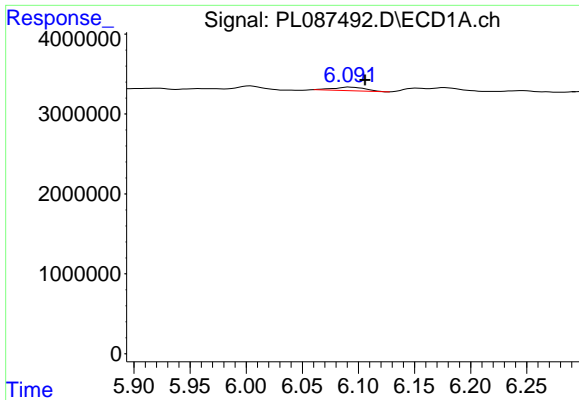
#11 alpha-Chlordane

R.T.: 0.000 min  
 Exp R.T. : 5.924 min  
 Response: 0  
 Conc: N.D.



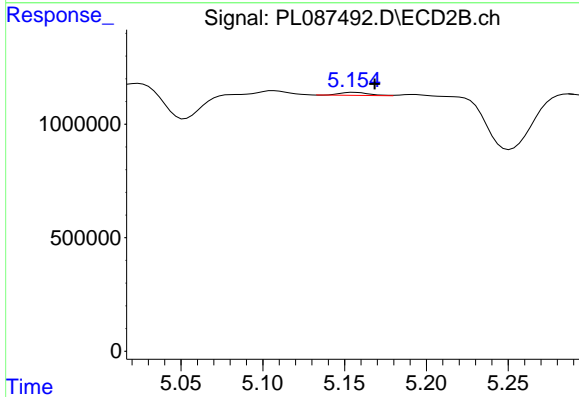
#11 alpha-Chlordane

R.T.: 4.974 min  
 Delta R.T.: 0.003 min  
 Response: 2938178  
 Conc: 1.27 ng/ml

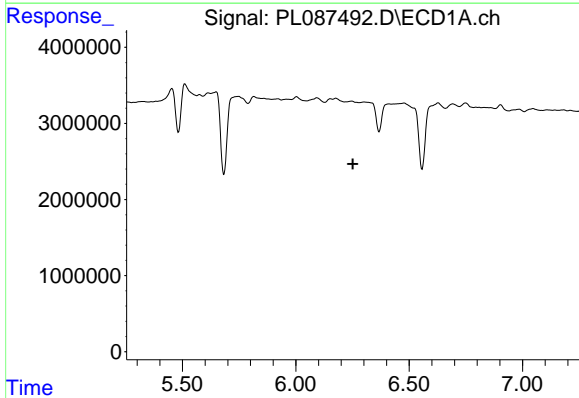


#12 4,4'-DDE  
 R.T.: 6.092 min  
 Delta R.T.: -0.014 min  
 Response: 874260  
 Conc: 0.21 ng/ml

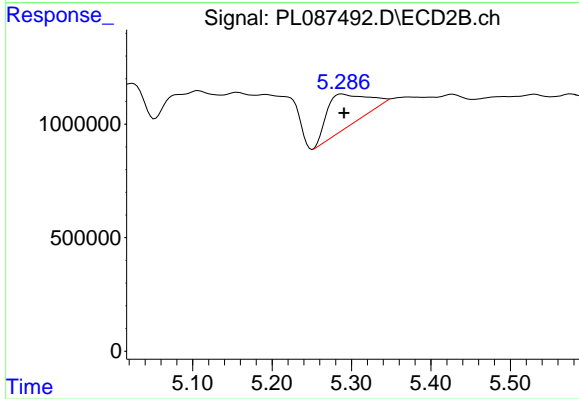
Instrument :  
 ECD\_L  
 ClientSampleId :



#12 4,4'-DDE  
 R.T.: 5.156 min  
 Delta R.T.: -0.013 min  
 Response: 169664  
 Conc: 0.09 ng/ml

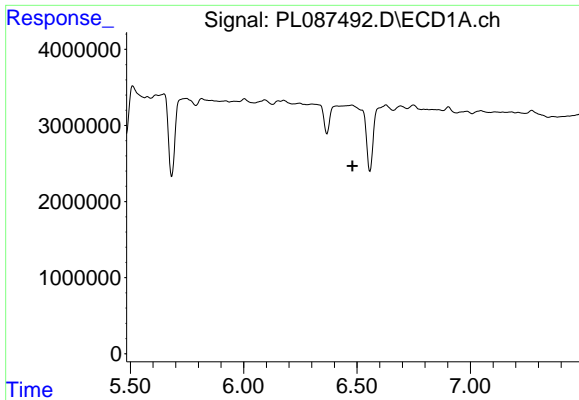


#13 Dieldrin  
 R.T.: 0.000 min  
 Exp R.T. : 6.251 min  
 Response: 0  
 Conc: N.D.



#13 Dieldrin  
 R.T.: 5.288 min  
 Delta R.T.: -0.003 min  
 Response: 4994918  
 Conc: 2.24 ng/ml

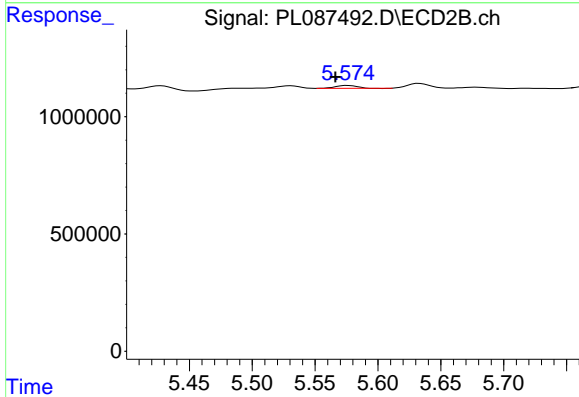




#14 Endrin

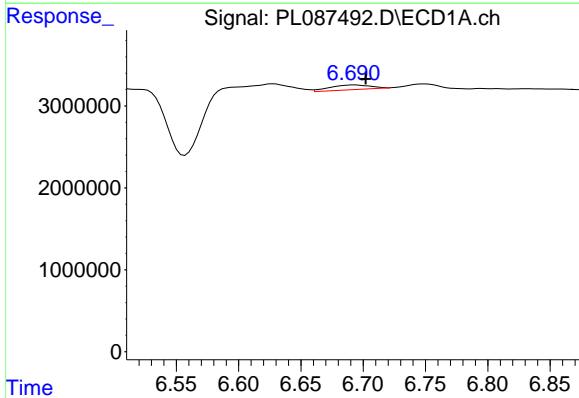
R.T.: 0.000 min  
 Exp R.T.: 6.480 min  
 Response: 0  
 Conc: N.D.

Instrument :  
 ECD\_L  
 ClientSampleId :



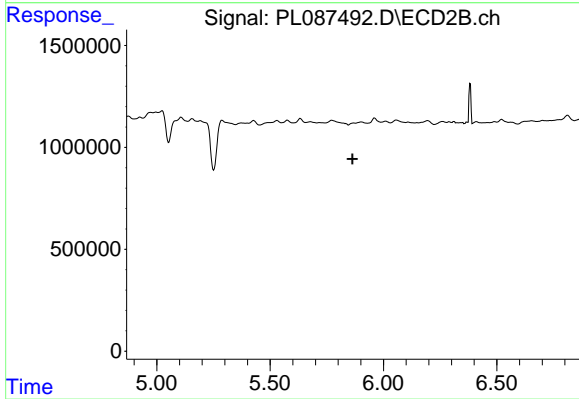
#14 Endrin

R.T.: 5.576 min  
 Delta R.T.: 0.010 min  
 Response: 140183  
 Conc: 0.07 ng/ml



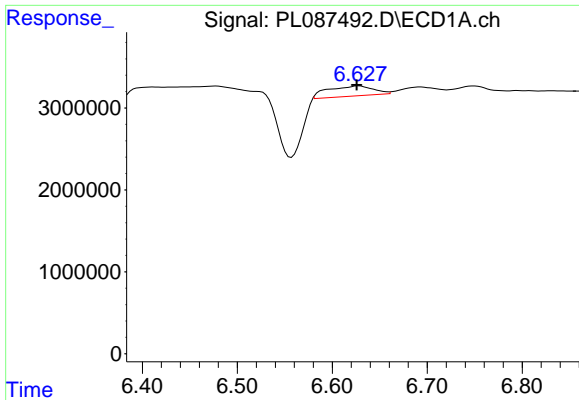
#15 Endosulfan II

R.T.: 6.692 min  
 Delta R.T.: -0.010 min  
 Response: 1308950  
 Conc: 0.33 ng/ml



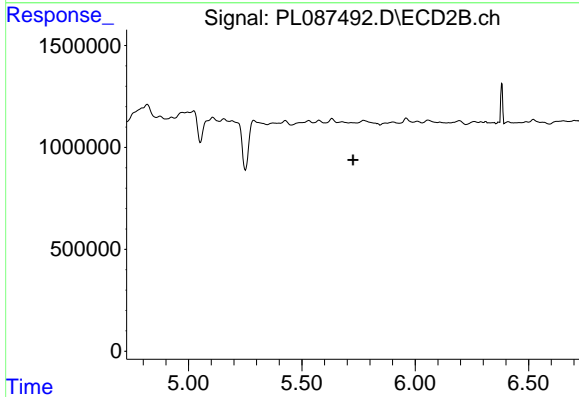
#15 Endosulfan II

R.T.: 5.869 min  
 Delta R.T.: 0.005 min  
 Response: -72564  
 Conc: N.D.

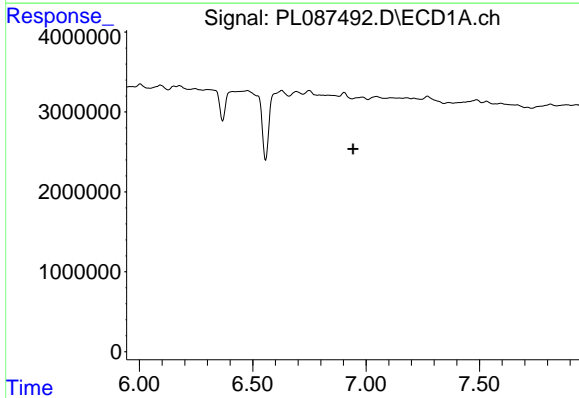


#16 4,4'-DDD  
 R.T.: 6.628 min  
 Delta R.T.: 0.002 min  
 Response: 4087684  
 Conc: 1.24 ng/ml

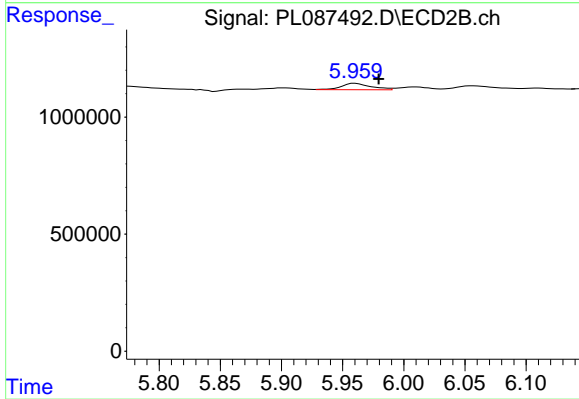
Instrument :  
 ECD\_L  
 ClientSampleId :



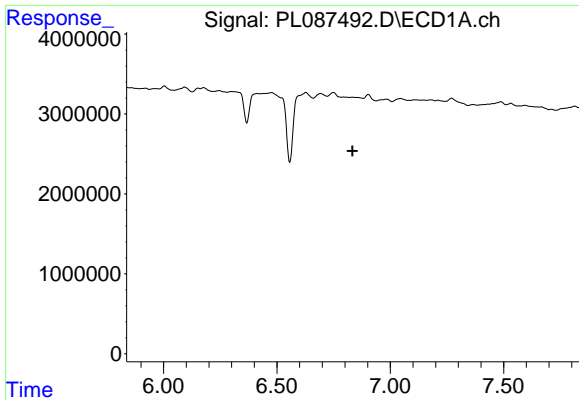
#16 4,4'-DDD  
 R.T.: 0.000 min  
 Exp R.T. : 5.727 min  
 Response: 0  
 Conc: N.D.



#17 4,4'-DDT  
 R.T.: 0.000 min  
 Exp R.T. : 6.943 min  
 Response: 0  
 Conc: N.D.



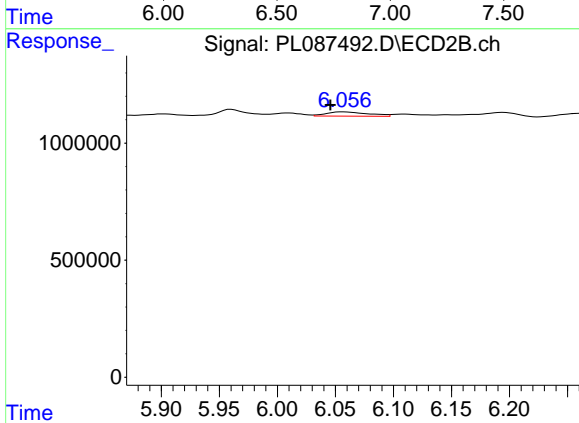
#17 4,4'-DDT  
 R.T.: 5.960 min  
 Delta R.T.: -0.019 min  
 Response: 450135  
 Conc: 0.24 ng/ml



#18 Endrin aldehyde

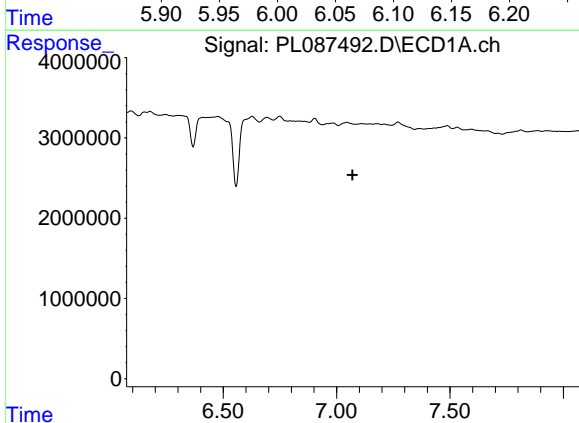
R.T.: 0.000 min  
 Exp R.T.: 6.833 min  
 Response: 0  
 Conc: N.D.

Instrument :  
 ECD\_L  
 ClientSampleId :



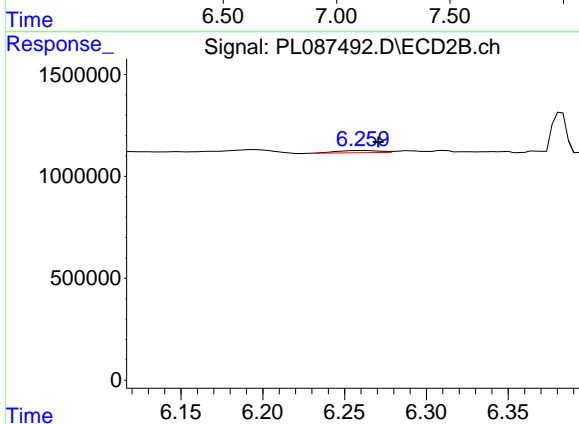
#18 Endrin aldehyde

R.T.: 6.057 min  
 Delta R.T.: 0.011 min  
 Response: 458557  
 Conc: 0.31 ng/ml



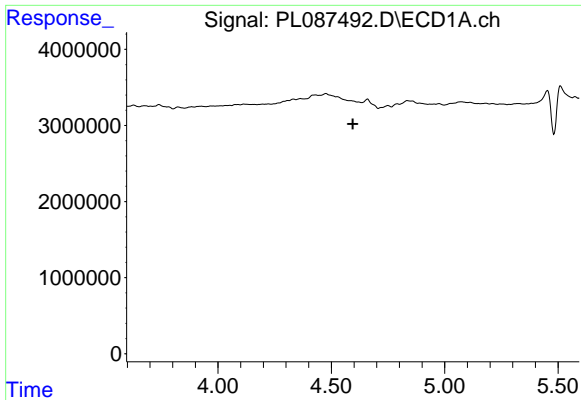
#19 Endosulfan Sulfate

R.T.: 0.000 min  
 Exp R.T.: 7.070 min  
 Response: 0  
 Conc: N.D.



#19 Endosulfan Sulfate

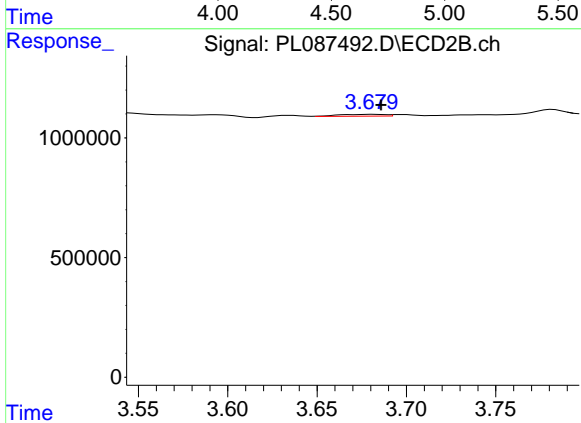
R.T.: 6.261 min  
 Delta R.T.: -0.010 min  
 Response: 193259  
 Conc: 0.10 ng/ml



#23 Chlordane-1

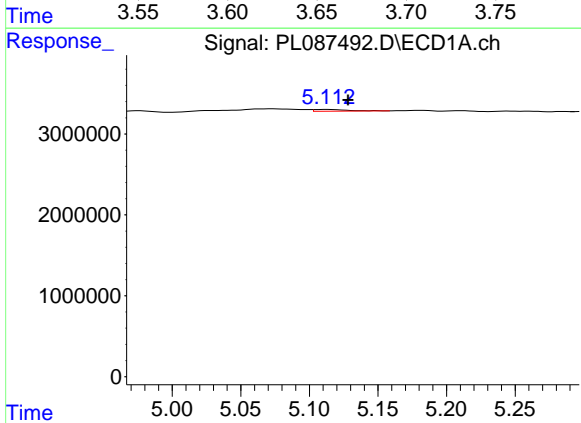
R.T.: 0.000 min  
 Exp R.T.: 4.594 min  
 Response: 0  
 Conc: N.D.

Instrument :  
 ECD\_L  
 ClientSampleId :



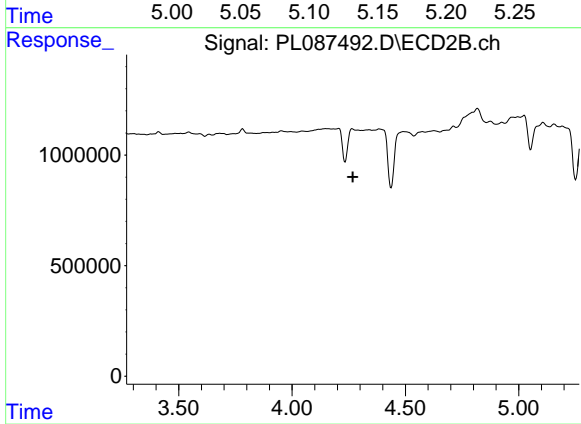
#23 Chlordane-1

R.T.: 3.680 min  
 Delta R.T.: -0.005 min  
 Response: 135459  
 Conc: 2.18 ng/ml



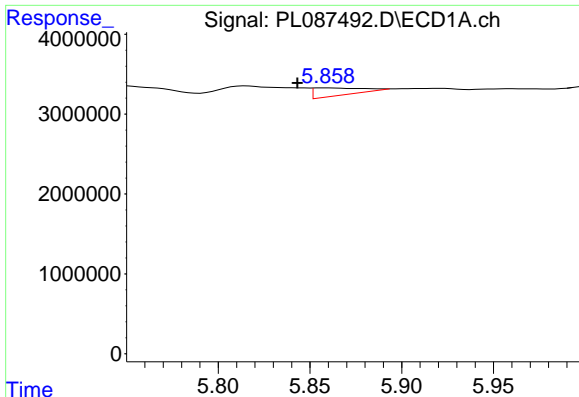
#24 Chlordane-2

R.T.: 5.113 min  
 Delta R.T.: -0.015 min  
 Response: 367915  
 Conc: 2.11 ng/ml



#24 Chlordane-2

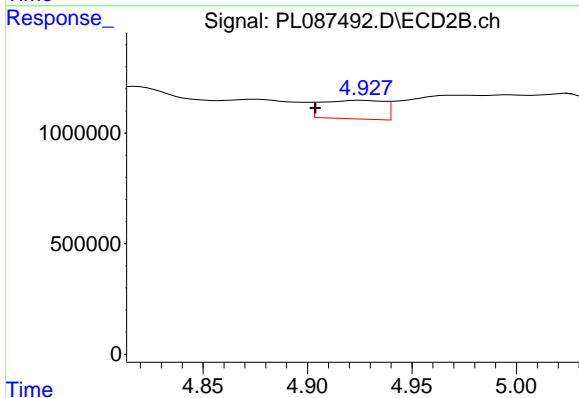
R.T.: 4.265 min  
 Delta R.T.: -0.004 min  
 Response: -39515  
 Conc: N.D.



#25 Chlordane-3

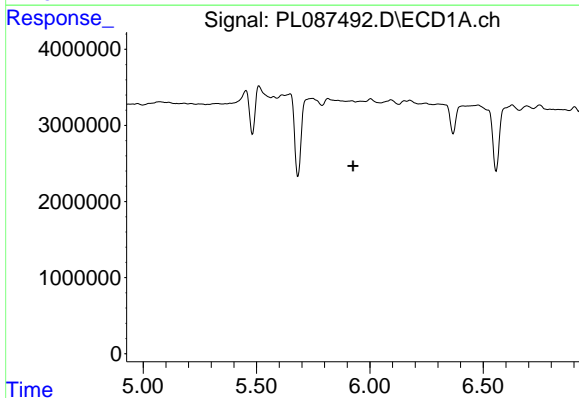
R.T.: 5.859 min  
 Delta R.T.: 0.016 min  
 Response: 1730878  
 Conc: 2.48 ng/ml

Instrument :  
 ECD\_L  
 ClientSampleId :



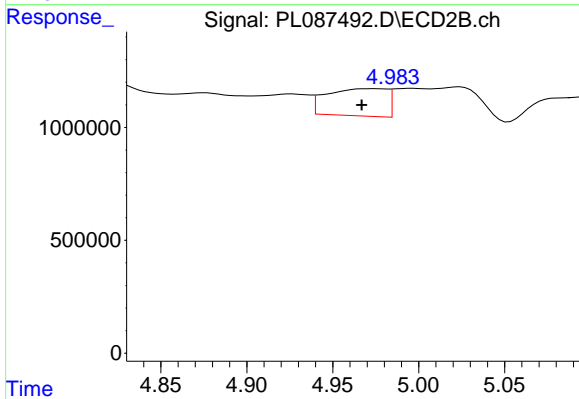
#25 Chlordane-3

R.T.: 4.926 min  
 Delta R.T.: 0.022 min  
 Response: 1744932  
 Conc: 7.89 ng/ml



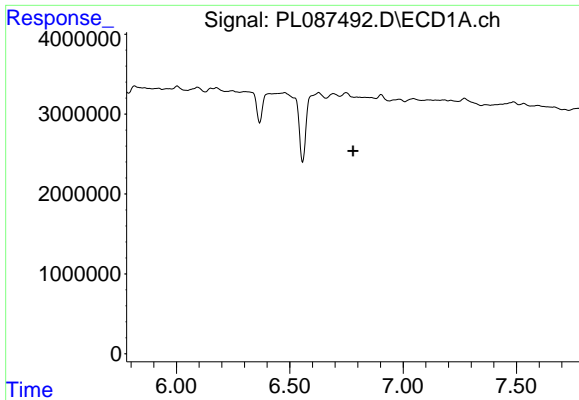
#26 Chlordane-4

R.T.: 0.000 min  
 Exp R.T. : 5.927 min  
 Response: 0  
 Conc: N.D.



#26 Chlordane-4

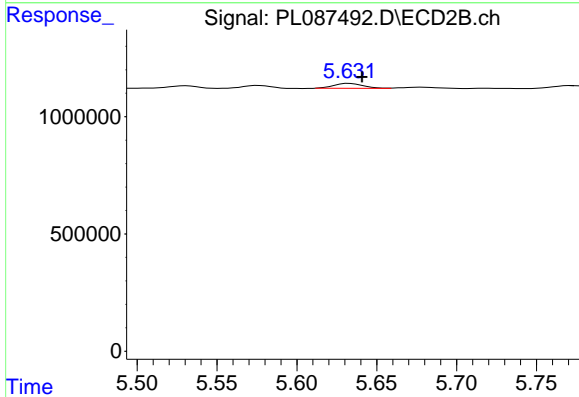
R.T.: 4.974 min  
 Delta R.T.: 0.007 min  
 Response: 2938178  
 Conc: 12.62 ng/ml



#27 Chlordane-5

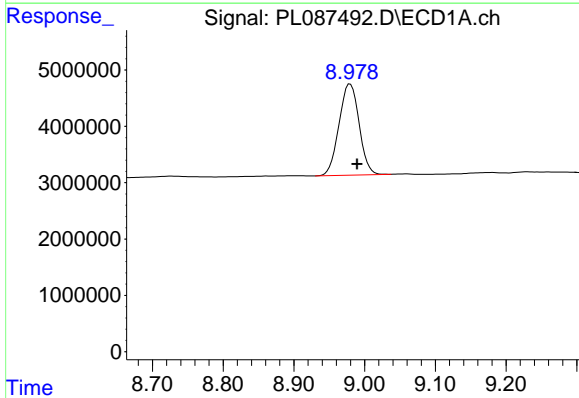
R.T.: 0.000 min  
 Exp R.T.: 6.779 min  
 Response: 0  
 Conc: N.D.

Instrument :  
 ECD\_L  
 ClientSampleId :



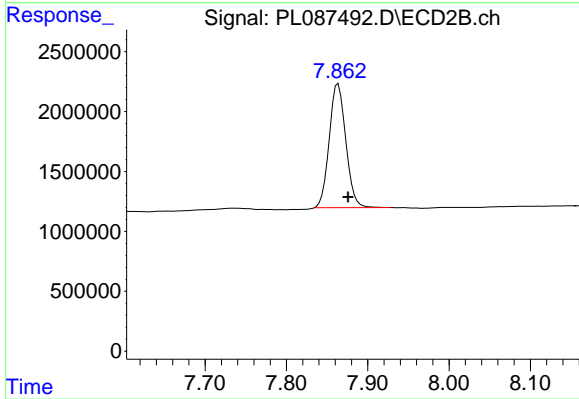
#27 Chlordane-5

R.T.: 5.633 min  
 Delta R.T.: -0.008 min  
 Response: 272874  
 Conc: 4.22 ng/ml



#28 Decachlorobiphenyl

R.T.: 8.979 min  
 Delta R.T.: -0.010 min  
 Response: 31999569  
 Conc: 9.38 ng/ml



#28 Decachlorobiphenyl

R.T.: 7.864 min  
 Delta R.T.: -0.012 min  
 Response: 14677574  
 Conc: 8.69 ng/ml