

Data Path : Z:\pestpcbsrv\HPCHEM1\ECD\_L\Data\PL122623\  
 Data File : PL087476.D  
 Signal(s) : Signal #1: ECD1A.ch Signal #2: ECD2B.ch  
 Acq On : 26 Dec 2023 11:36  
 Operator : AR\AJ  
 Sample : 05899-01DL 10X  
 Misc :  
 ALS Vial : 10 Sample Multiplier: 1

**Instrument :**  
 ECD\_L  
**ClientSampleId :**  
 GH-SS-08DL

**Manual Integrations**  
**APPROVED**

Reviewed By :Abdul Mirza 12/28/2023  
 Supervised By :Ankita Jodhani 12/28/2023

Integration File signal 1: autoint1.e  
 Integration File signal 2: autoint2.e  
 Quant Time: Dec 27 05:03:35 2023  
 Quant Method : Z:\pestpcbsrv\HPCHEM1\ECD\_L\methods\LTX121523.M  
 Quant Title : GC Extractables  
 QLast Update : Sat Dec 16 04:29:29 2023  
 Response via : Initial Calibration  
 Integrator: ChemStation

Volume Inj. : 2 µl  
 Signal #1 Phase : Rtx-CLPesticide 1 Signal #2 Phase: Rtx-CLPesticide 1  
 Signal #1 Info : 30M x 0.32mm x0.3 Signal #2 Info : 30M x 0.32mm x 0.25µm

Compound	RT#1	RT#2	Resp#1	Resp#2	ng/ml	ng/ml
-----						
System Monitoring Compounds						
1) SA Tetrachlo...	3.421	2.677	5172891	2176483	1.373	1.319
7) SA Decachlor...	8.977	7.863	5083958	2033645	1.545	1.197m
Target Compounds						
2) Toxaphene-1	6.138	5.242	35852829	14741425	1047.453	1306.824m
3) Toxaphene-2	6.540	5.887	8988925	17981003	339.134	1217.072 #
4) Toxaphene-3	6.963	6.521f	63983329	13874956	498.116	295.608 #
5) Toxaphene-4	7.053	6.654	30440727	22306505	329.589	330.338m
6) Toxaphene-5	7.477	7.107	28722281	906042	369.601m	39.458 #
-----						

(f)=RT Delta > 1/2 Window (#)=Amounts differ by > 25% (m)=manual int.

Data Path : Z:\pestpcbsrv\HPCHEM1\ECD\_L\Data\PL122623\  
 Data File : PL087476.D  
 Signal(s) : Signal #1: ECD1A.ch Signal #2: ECD2B.ch  
 Acq On : 26 Dec 2023 11:36  
 Operator : AR\AJ  
 Sample : 05899-01DL 10X  
 Misc :  
 ALS Vial : 10 Sample Multiplier: 1

**Instrument :**

ECD\_L

**ClientSampleId :**

GHL-SS-08DL

**Manual Integrations**

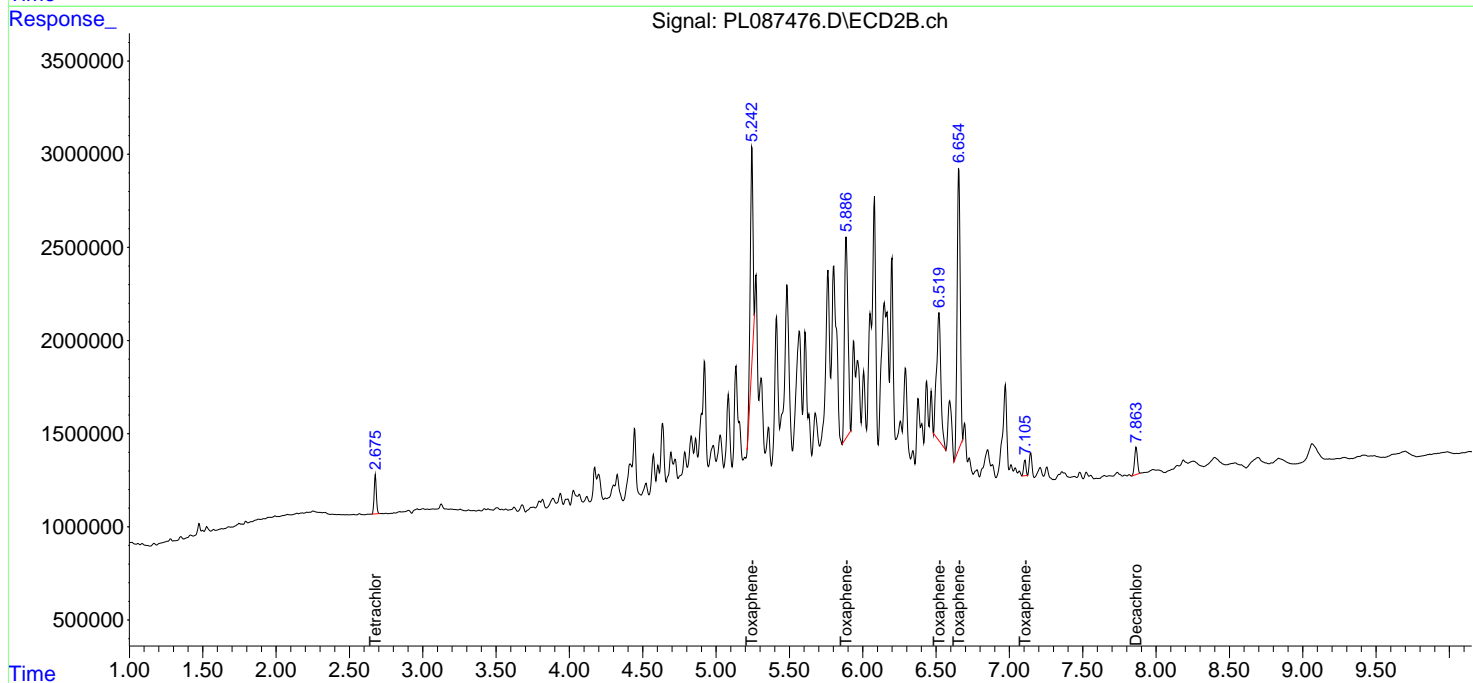
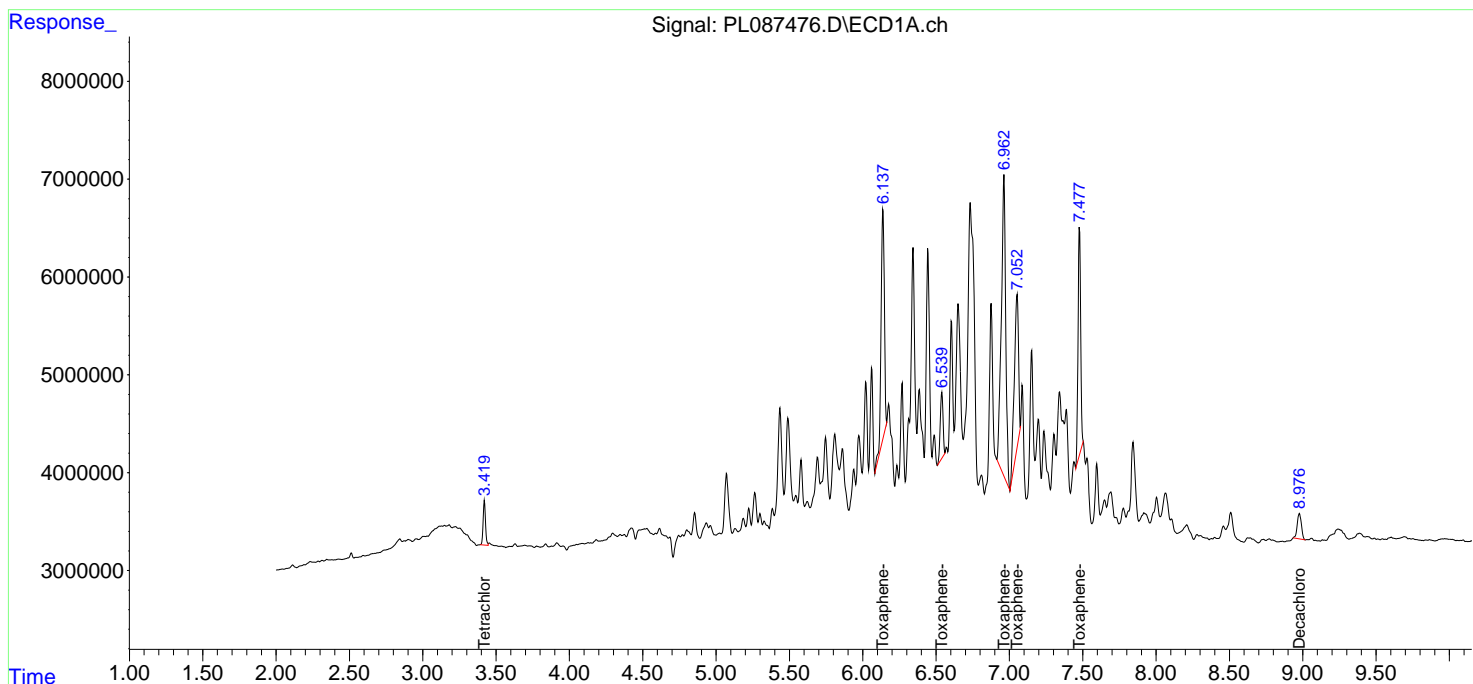
**APPROVED**

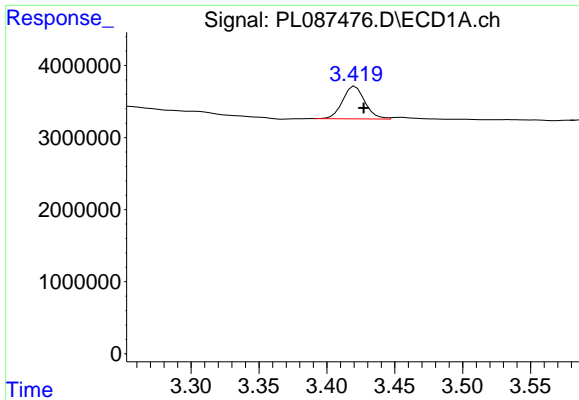
Reviewed By :Abdul Mirza 12/28/2023

Supervised By :Ankita Jodhani 12/28/2023

Integration File signal 1: autoint1.e  
 Integration File signal 2: autoint2.e  
 Quant Time: Dec 27 05:03:35 2023  
 Quant Method : Z:\pestpcbsrv\HPCHEM1\ECD\_L\methods\LTX121523.M  
 Quant Title : GC Extractables  
 QLast Update : Sat Dec 16 04:29:29 2023  
 Response via : Initial Calibration  
 Integrator: ChemStation

Volume Inj. : 2 µl  
 Signal #1 Phase : Rtx-CLPesticide 1 Signal #2 Phase: Rtx-CLPesticide 1  
 Signal #1 Info : 30M x 0.32mm x0.3 Signal #2 Info : 30M x 0.32mm x 0.25µm

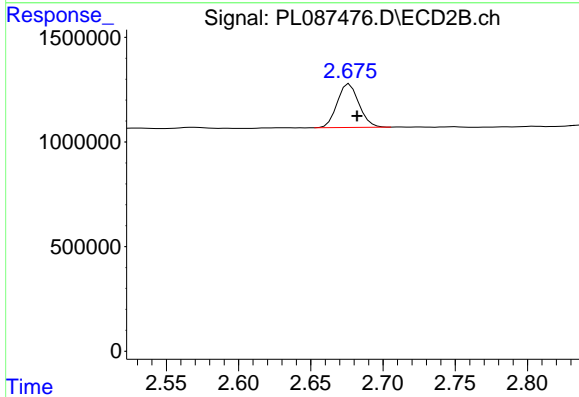




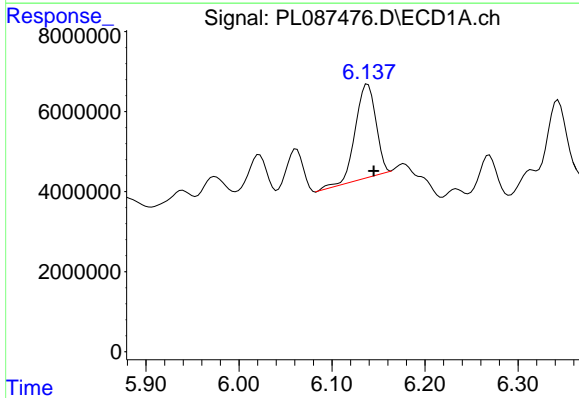
#1 Tetrachloro-m-xylene  
 R.T.: 3.421 min  
 Delta R.T.: -0.006 min  
 Response: 5172891  
 Conc: 1.37 ng/ml

Instrument : ECD\_L  
 Client Sample Id : GH-SS-08DL

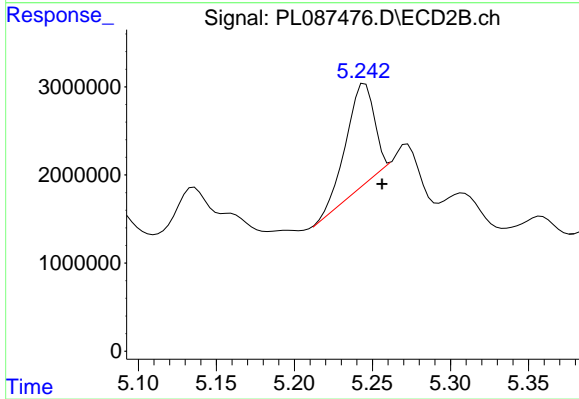
**Manual Integrations**  
**APPROVED**  
 Reviewed By :Abdul Mirza 12/28/2023  
 Supervised By :Ankita Jodhani 12/28/2023



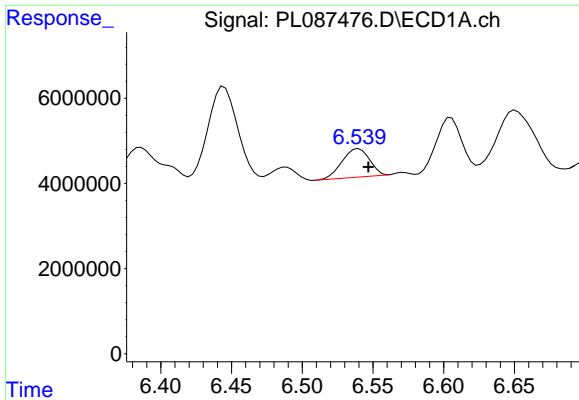
#1 Tetrachloro-m-xylene  
 R.T.: 2.677 min  
 Delta R.T.: -0.005 min  
 Response: 2176483  
 Conc: 1.32 ng/ml



#2 Toxaphene-1  
 R.T.: 6.138 min  
 Delta R.T.: -0.007 min  
 Response: 35852829  
 Conc: 1047.45 ng/ml



#2 Toxaphene-1  
 R.T.: 5.242 min  
 Delta R.T.: -0.014 min  
 Response: 14741425  
 Conc: 1306.82 ng/ml m



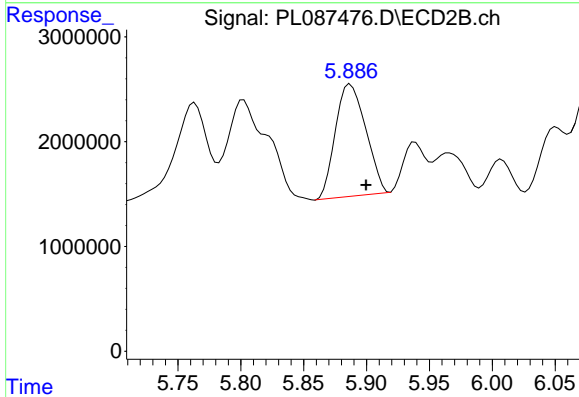
#3 Toxaphene-2

R.T.: 6.540 min  
 Delta R.T.: -0.007 min  
 Response: 8988925  
 Conc: 339.13 ng/ml

Instrument :  
 ECD\_L  
 ClientSampleId :  
 GHL-SS-08DL

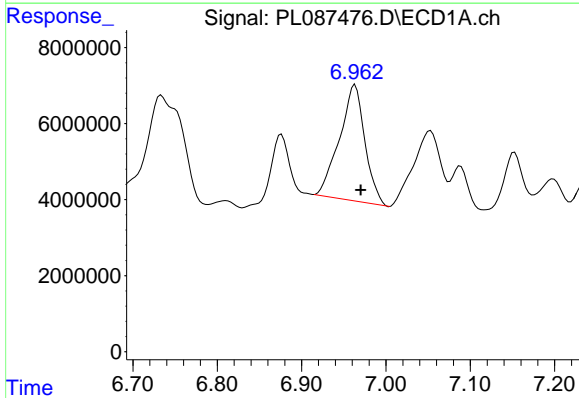
Manual Integrations  
 APPROVED

Reviewed By :Abdul Mirza 12/28/2023  
 Supervised By :Ankita Jodhani 12/28/2023



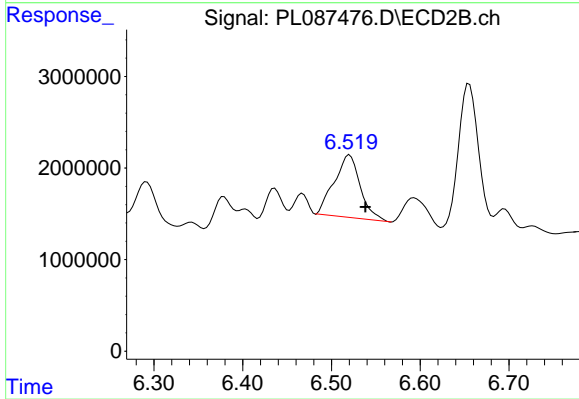
#3 Toxaphene-2

R.T.: 5.887 min  
 Delta R.T.: -0.012 min  
 Response: 17981003  
 Conc: 1217.07 ng/ml



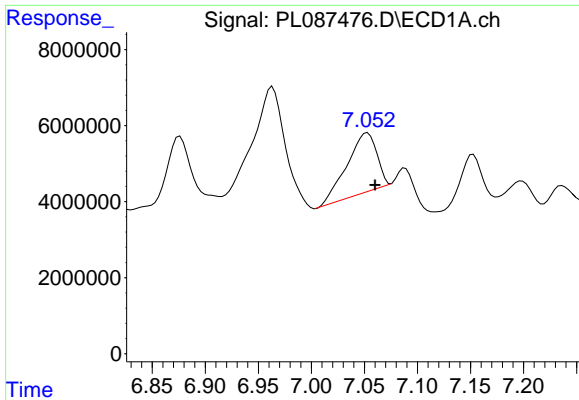
#4 Toxaphene-3

R.T.: 6.963 min  
 Delta R.T.: -0.007 min  
 Response: 63983329  
 Conc: 498.12 ng/ml



#4 Toxaphene-3

R.T.: 6.521 min  
 Delta R.T.: -0.018 min  
 Response: 13874956  
 Conc: 295.61 ng/ml



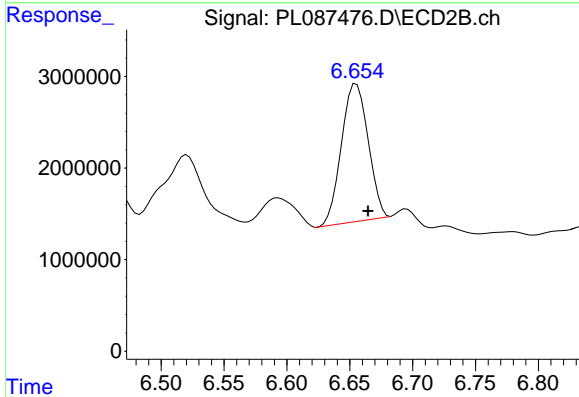
#5 Toxaphene-4

R.T.: 7.053 min  
 Delta R.T.: -0.007 min  
 Response: 30440727  
 Conc: 329.59 ng/ml

Instrument :  
 ECD\_L  
 ClientSampleId :  
 GHL-SS-08DL

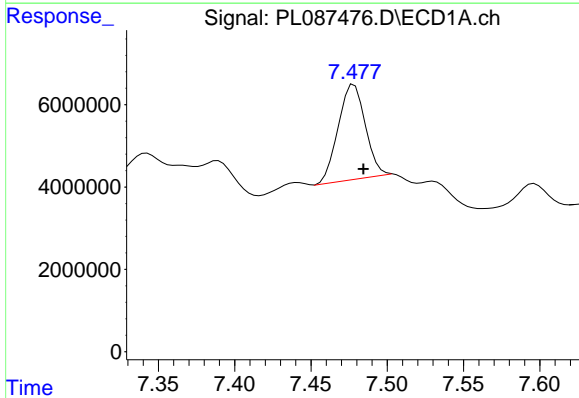
Manual Integrations  
 APPROVED

Reviewed By :Abdul Mirza 12/28/2023  
 Supervised By :Ankita Jodhani 12/28/2023



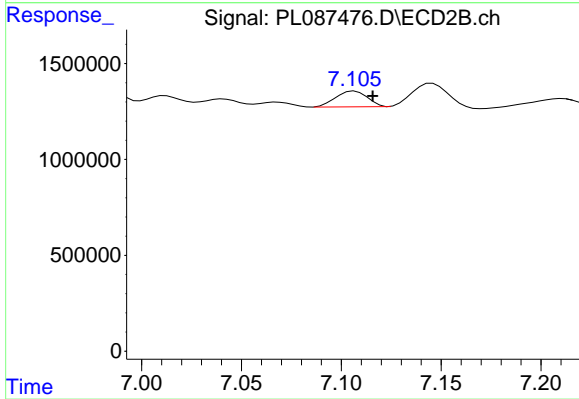
#5 Toxaphene-4

R.T.: 6.654 min  
 Delta R.T.: -0.011 min  
 Response: 22306505  
 Conc: 330.34 ng/ml m



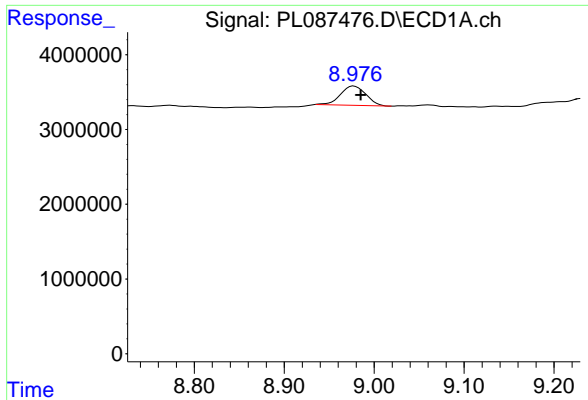
#6 Toxaphene-5

R.T.: 7.477 min  
 Delta R.T.: -0.007 min  
 Response: 28722281  
 Conc: 369.60 ng/ml m



#6 Toxaphene-5

R.T.: 7.107 min  
 Delta R.T.: -0.009 min  
 Response: 906042  
 Conc: 39.46 ng/ml



#7 Decachlorobiphenyl

R.T.: 8.977 min  
 Delta R.T.: -0.008 min  
 Response: 5083958  
 Conc: 1.54 ng/ml

Instrument :

ECD\_L

ClientSampleId :

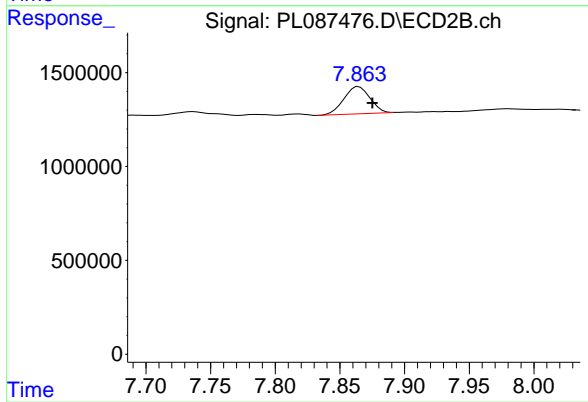
GHL-SS-08DL

Manual Integrations

APPROVED

Reviewed By :Abdul Mirza 12/28/2023

Supervised By :Ankita Jodhani 12/28/2023



#7 Decachlorobiphenyl

R.T.: 7.863 min  
 Delta R.T.: -0.012 min  
 Response: 2033645  
 Conc: 1.20 ng/ml m