

Data Path : Z:\pestpcbsrv\HPCHEM1\ECD_L\Data\PL122623\
 Data File : PL087483.D
 Signal(s) : Signal #1: ECD1A.ch Signal #2: ECD2B.ch
 Acq On : 26 Dec 2023 13:13
 Operator : AR\AJ
 Sample : 05898-08
 Misc :
 ALS Vial : 17 Sample Multiplier: 1

Instrument :
 ECD_L
 ClientSampleId :
 GHL-SS-72a

Integration File signal 1: autoint1.e
 Integration File signal 2: autoint2.e
 Quant Time: Dec 27 04:46:49 2023
 Quant Method : Z:\pestpcbsrv\HPCHEM1\ECD_L\methods\PL121523.M
 Quant Title : GC Extractables
 QLast Update : Sat Dec 16 04:03:23 2023
 Response via : Initial Calibration
 Integrator: ChemStation

Volume Inj. : 1 µl
 Signal #1 Phase : ZB-MR2 Signal #2 Phase: ZB-MR1
 Signal #1 Info : 30M x 0.32mm x0.2 Signal #2 Info : 30M x 0.32mm x0.5µm

Compound	RT#1	RT#2	Resp#1	Resp#2	ng/ml	ng/ml

System Monitoring Compounds						
1) SA Tetrachlo...	3.422	2.677	54449681	24246949	14.468	14.404
28) SA Decachlor...	8.977	7.865	44079162	22363147	12.927	13.241

Target Compounds

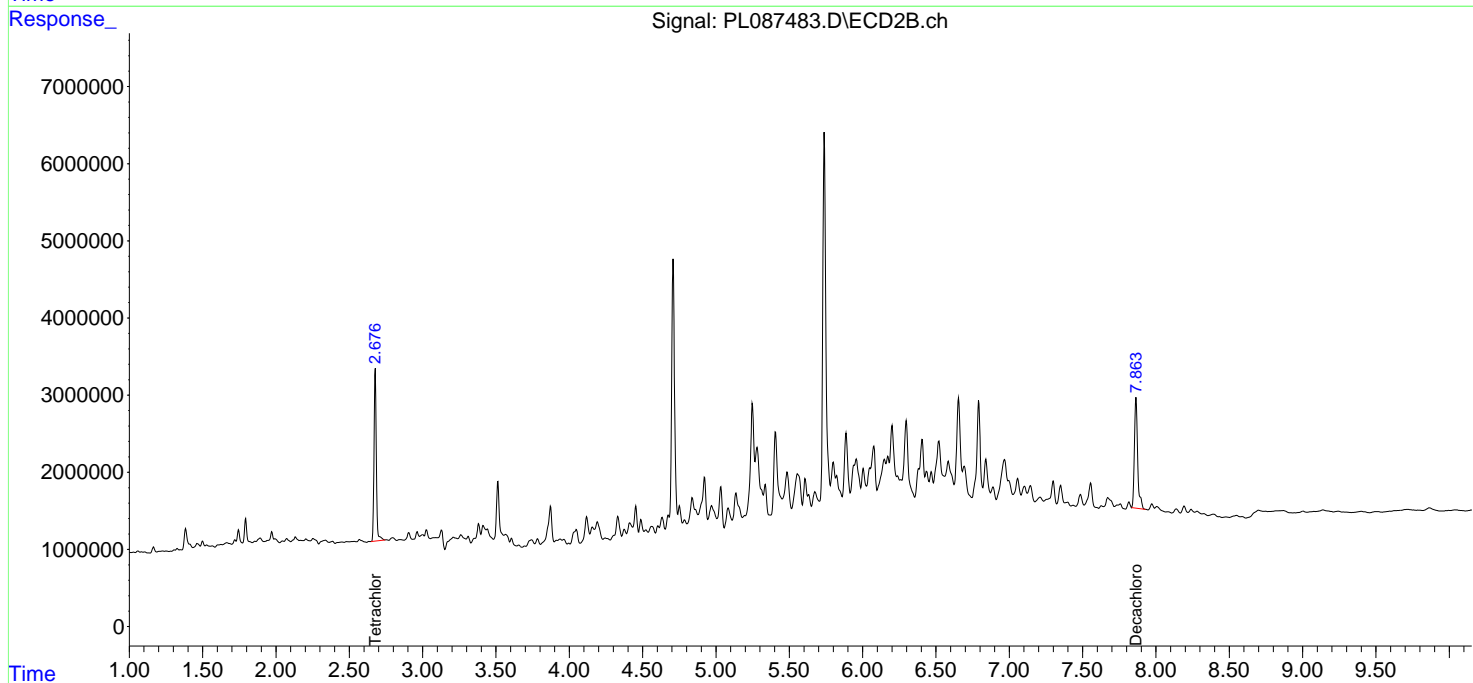
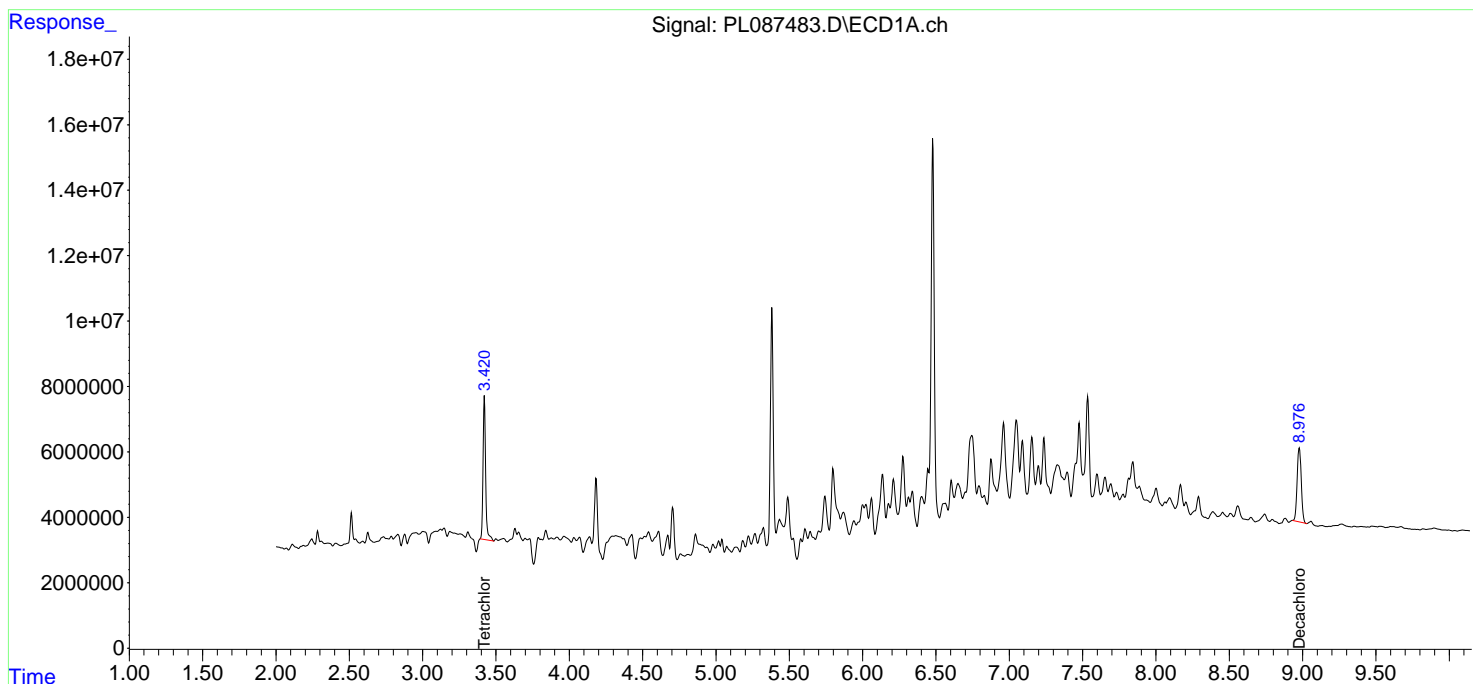
(f)=RT Delta > 1/2 Window (#)=Amounts differ by > 25% (m)=manual int.

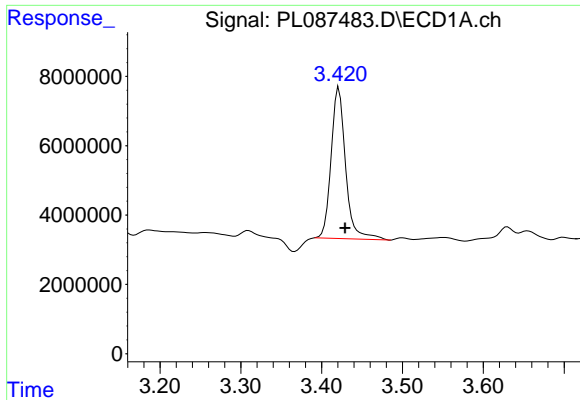
Data Path : Z:\pestpcbsrv\HPCHEM1\ECD_L\Data\PL122623\
 Data File : PL087483.D
 Signal(s) : Signal #1: ECD1A.ch Signal #2: ECD2B.ch
 Acq On : 26 Dec 2023 13:13
 Operator : AR\AJ
 Sample : 05898-08
 Misc :
 ALS Vial : 17 Sample Multiplier: 1

Instrument :
 ECD_L
 ClientSampleId :
 GHl-SS-72a

Integration File signal 1: autoint1.e
 Integration File signal 2: autoint2.e
 Quant Time: Dec 27 04:46:49 2023
 Quant Method : Z:\pestpcbsrv\HPCHEM1\ECD_L\methods\PL121523.M
 Quant Title : GC Extractables
 QLast Update : Sat Dec 16 04:03:23 2023
 Response via : Initial Calibration
 Integrator: ChemStation

Volume Inj. : 1 µl
 Signal #1 Phase : ZB-MR2 Signal #2 Phase: ZB-MR1
 Signal #1 Info : 30M x 0.32mm x0.2 Signal #2 Info : 30M x 0.32mm x0.5µm

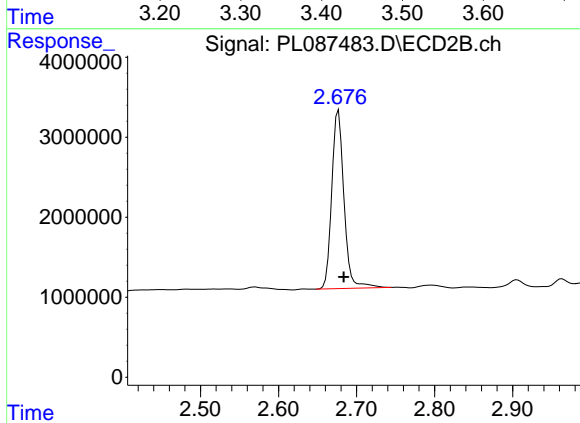




#1 Tetrachloro-m-xylene

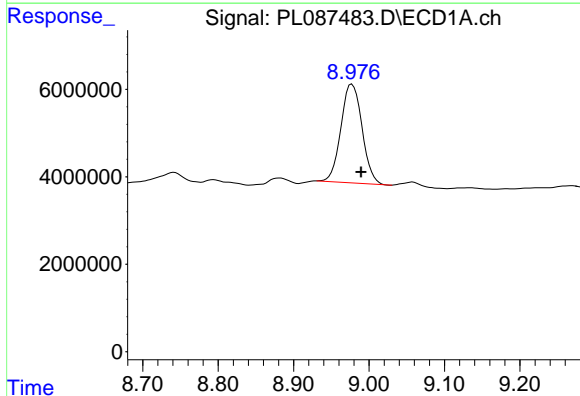
R.T.: 3.422 min
 Delta R.T.: -0.007 min
 Response: 54449681
 Conc: 14.47 ng/ml

Instrument :
 ECD_L
 ClientSampleId :
 GHL-SS-72a



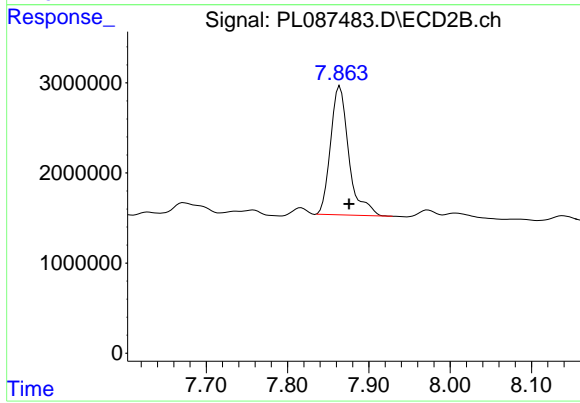
#1 Tetrachloro-m-xylene

R.T.: 2.677 min
 Delta R.T.: -0.007 min
 Response: 24246949
 Conc: 14.40 ng/ml



#28 Decachlorobiphenyl

R.T.: 8.977 min
 Delta R.T.: -0.012 min
 Response: 44079162
 Conc: 12.93 ng/ml



#28 Decachlorobiphenyl

R.T.: 7.865 min
 Delta R.T.: -0.011 min
 Response: 22363147
 Conc: 13.24 ng/ml