

Data Path : Z:\pestpcbsrv\HPCHEM1\ECD\_L\Data\PL122718\  
 Data File : PL043454.D  
 Signal(s) : Signal #1: ECD1A.ch Signal #2: ECD2B.ch  
 Acq On : 27 Dec 2018 17:50  
 Operator : AJ\SJ  
 Sample : PB116022TB  
 Misc :  
 ALS Vial : 25 Sample Multiplier: 1

**Instrument :**  
 ECD\_L  
**ClientSampleID :**  
 PB116022TB

Integration File signal 1: autoint1.e  
 Integration File signal 2: autoint2.e  
 Quant Time: Dec 28 00:11:42 2018  
 Quant Method : Z:\pestpcbsrv\HPCHEM1\ECD\_L\methods\PL120618.M  
 Quant Title : GC Extractables  
 QLast Update : Fri Dec 07 00:20:08 2018  
 Response via : Initial Calibration  
 Integrator: ChemStation

Volume Inj. : 2 µl  
 Signal #1 Phase : ZB-MR1 Signal #2 Phase: ZB-MR2  
 Signal #1 Info : 30M x 0.32mm x0.5 Signal #2 Info : 30M x 0.32mm x0.25µm

Compound	RT#1	RT#2	Resp#1	Resp#2	ng/ml	ng/ml
-----						
System Monitoring Compounds						
1) SA Tetrachlo...	3.463	4.098	128.5E6	65723001	20.949	22.175
28) SA Decachlor...	8.195	9.222	129.8E6	56700423	19.877	21.737
Target Compounds						
6) B beta-BHC	4.394f	0.000	2407635	0	0.653	N.D. #
23) Chlordane-1	4.359	0.000	1244991	0	4.633	N.D. #
-----						

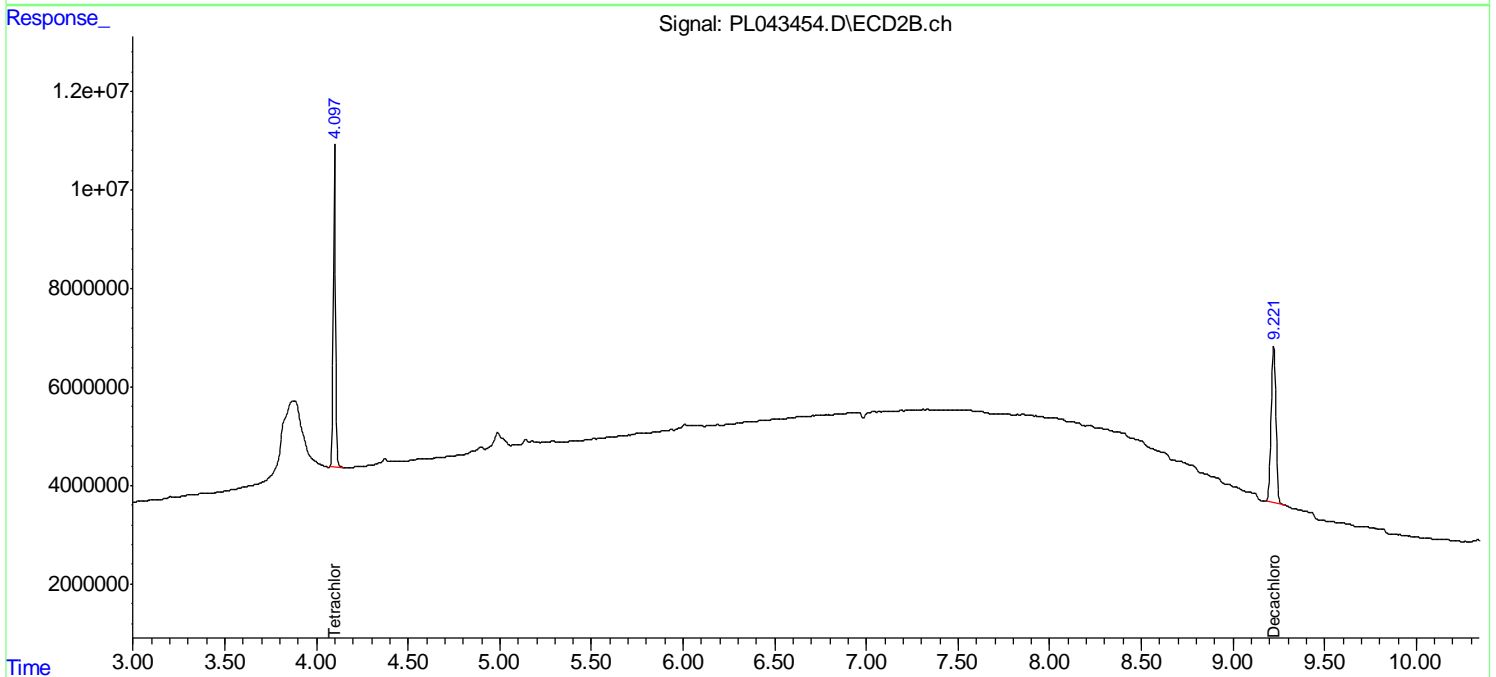
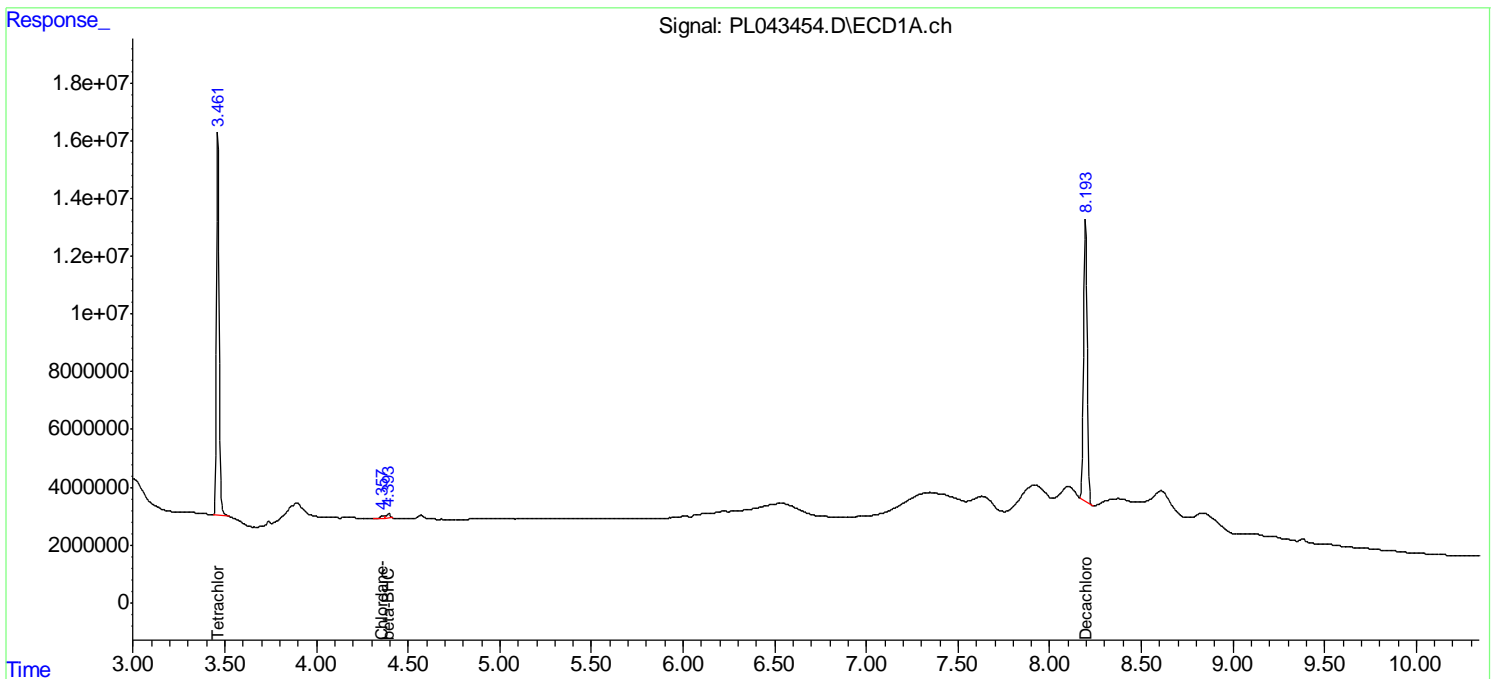
(f)=RT Delta > 1/2 Window (#)=Amounts differ by > 25% (m)=manual int.

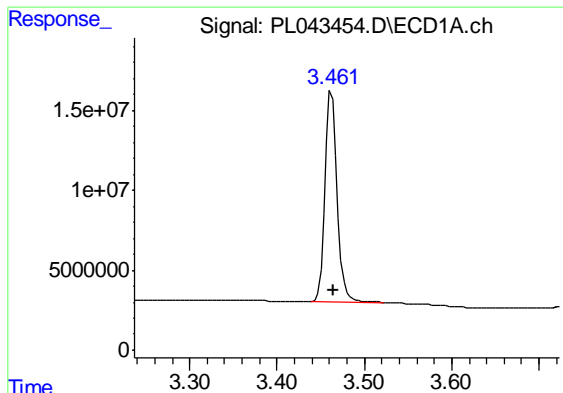
Data Path : Z:\pestpcbsrv\HPCHEM1\ECD\_L\Data\PL122718\  
 Data File : PL043454.D  
 Signal(s) : Signal #1: ECD1A.ch Signal #2: ECD2B.ch  
 Acq On : 27 Dec 2018 17:50  
 Operator : AJ\SJ  
 Sample : PB116022TB  
 Misc :  
 ALS Vial : 25 Sample Multiplier: 1

Instrument :  
 ECD\_L  
 ClientSampleID :  
 PB116022TB

Integration File signal 1: autoint1.e  
 Integration File signal 2: autoint2.e  
 Quant Time: Dec 28 00:11:42 2018  
 Quant Method : Z:\pestpcbsrv\HPCHEM1\ECD\_L\methods\PL120618.M  
 Quant Title : GC Extractables  
 QLast Update : Fri Dec 07 00:20:08 2018  
 Response via : Initial Calibration  
 Integrator: ChemStation

Volume Inj. : 2 µl  
 Signal #1 Phase : ZB-MR1 Signal #2 Phase: ZB-MR2  
 Signal #1 Info : 30M x 0.32mm x0.5 Signal #2 Info : 30M x 0.32mm x0.25µm

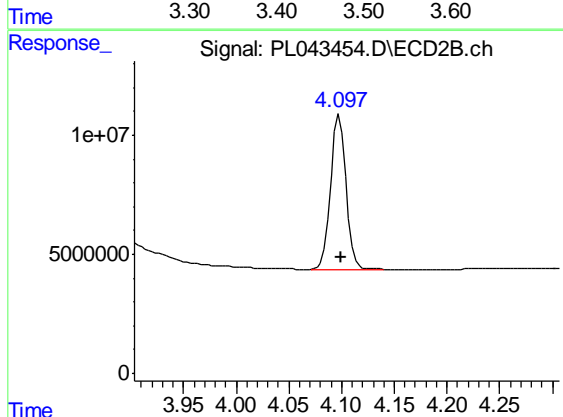




#1 Tetrachloro-m-xylene

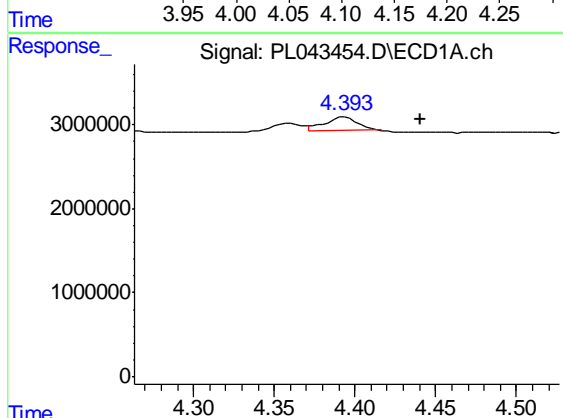
R.T.: 3.463 min  
 Delta R.T.: -0.001 min  
 Response: 128475125  
 Conc: 20.95 ng/ml

Instrument :  
 ECD\_L  
 ClientSampleId :  
 PB116022TB



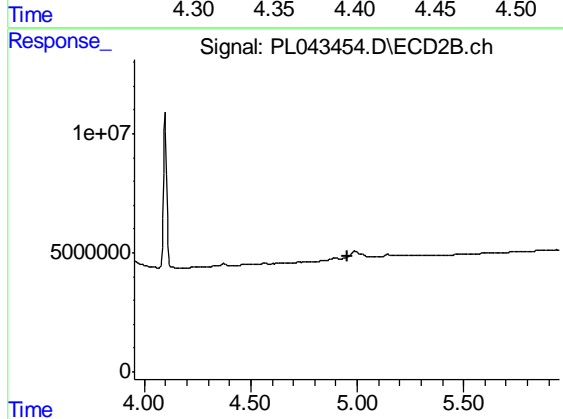
#1 Tetrachloro-m-xylene

R.T.: 4.098 min  
 Delta R.T.: 0.000 min  
 Response: 65723001  
 Conc: 22.17 ng/ml



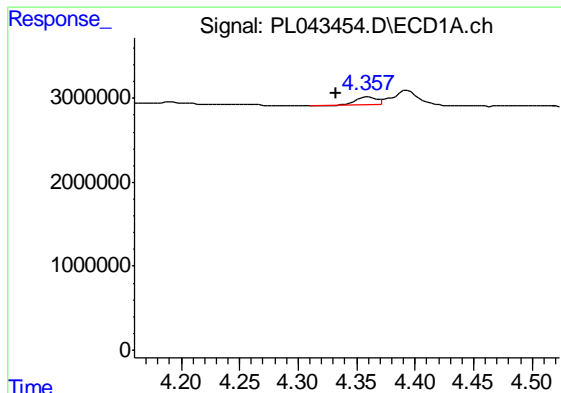
#6 beta-BHC

R.T.: 4.394 min  
 Delta R.T.: -0.046 min  
 Response: 2407635  
 Conc: 0.65 ng/ml



#6 beta-BHC

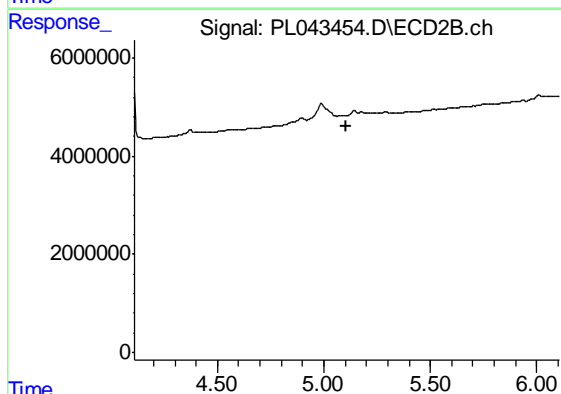
R.T.: 0.000 min  
 Exp R.T. : 4.952 min  
 Response: 0  
 Conc: N.D.



#23 Chlordane-1

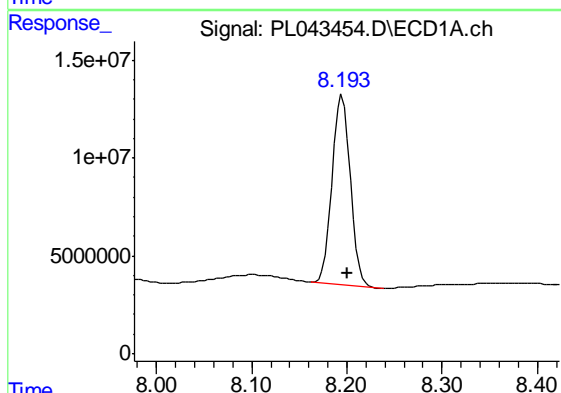
R.T.: 4.359 min  
 Delta R.T.: 0.027 min  
 Response: 1244991  
 Conc: 4.63 ng/ml

Instrument :  
 ECD\_L  
 ClientSampleId :  
 PB116022TB



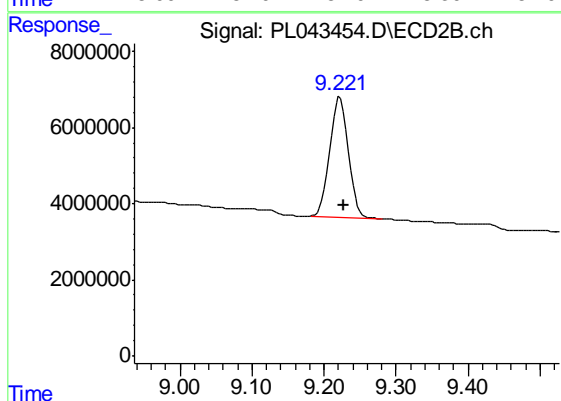
#23 Chlordane-1

R.T.: 0.000 min  
 Exp R.T. : 5.108 min  
 Response: 0  
 Conc: N.D.



#28 Decachlorobiphenyl

R.T.: 8.195 min  
 Delta R.T.: -0.006 min  
 Response: 129798080  
 Conc: 19.88 ng/ml



#28 Decachlorobiphenyl

R.T.: 9.222 min  
 Delta R.T.: -0.005 min  
 Response: 56700423  
 Conc: 21.74 ng/ml