

Data Path : Z:\pestpcbsrv\HPCHEM1\ECD\_L\Data\PL122719\  
 Data File : PL055330.D  
 Signal(s) : Signal #1: ECD1A.ch Signal #2: ECD2B.ch  
 Acq On : 27 Dec 2019 18:18  
 Operator : SG\AJ  
 Sample : K6439-06  
 Misc :  
 ALS Vial : 19 Sample Multiplier: 1

Instrument :  
 ECD\_L  
 ClientSampleId :

Integration File signal 1: autoint1.e  
 Integration File signal 2: autoint2.e  
 Quant Time: Dec 28 00:34:41 2019  
 Quant Method : Z:\pestpcbsrv\HPCHEM1\ECD\_L\methods\PL122119.M  
 Quant Title : GC Extractables  
 QLast Update : Sat Dec 21 05:21:06 2019  
 Response via : Initial Calibration  
 Integrator: ChemStation

Volume Inj. : 1 µl  
 Signal #1 Phase : ZB-MR2 Signal #2 Phase: ZB-MR1  
 Signal #1 Info : 30M x 0.32mm x0.2 Signal #2 Info : 30M x 0.32mm x0.5µm

Compound	RT#1	RT#2	Resp#1	Resp#2	ng/ml	ng/ml
System Monitoring Compounds						
1) SA Tetrachlo...	3.535	4.049	224.4E6	63577378	21.339	24.062
28) SA Decachlor...	8.311	9.146	166.6E6	41789129	17.960	18.931
Target Compounds						
6) B beta-BHC	0.000	4.880f	0	1783866	N.D.	1.086 #
15) B Endosulfa...	0.000	6.983	0	8933759	N.D.	3.768 #

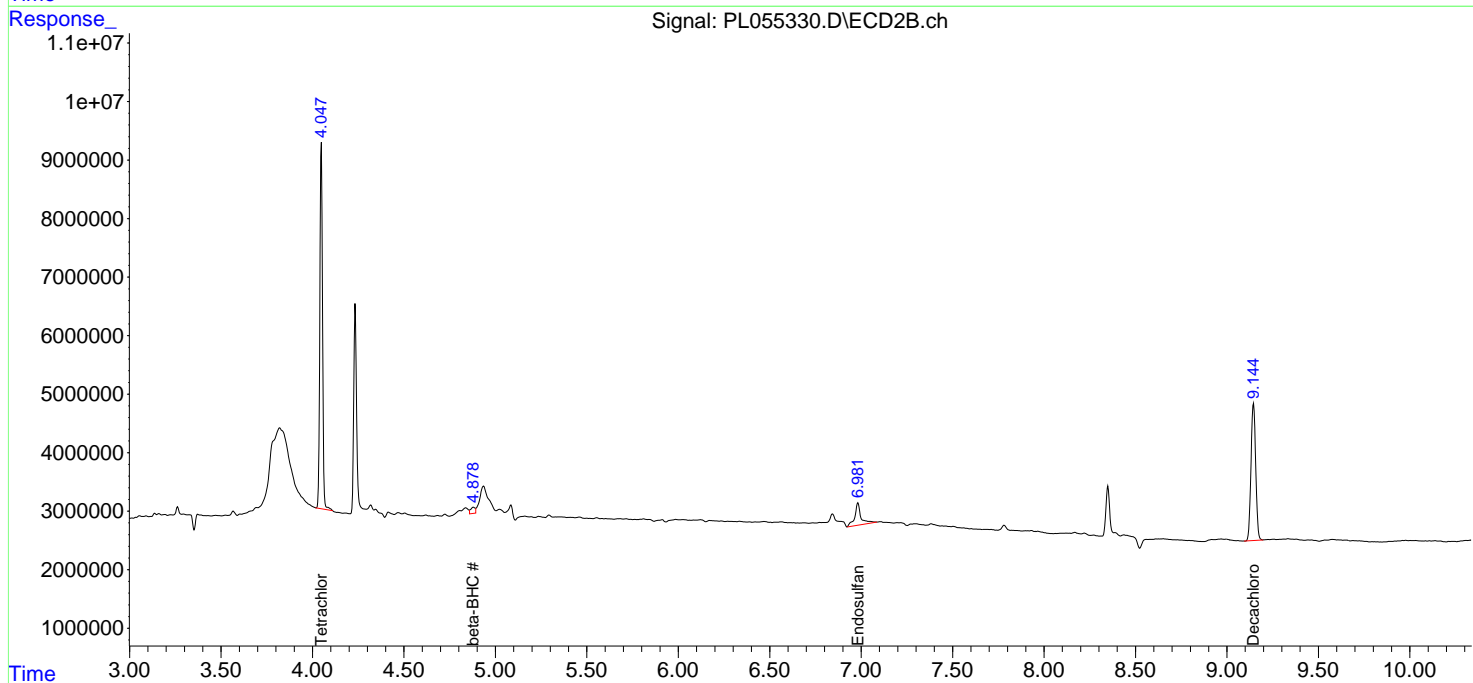
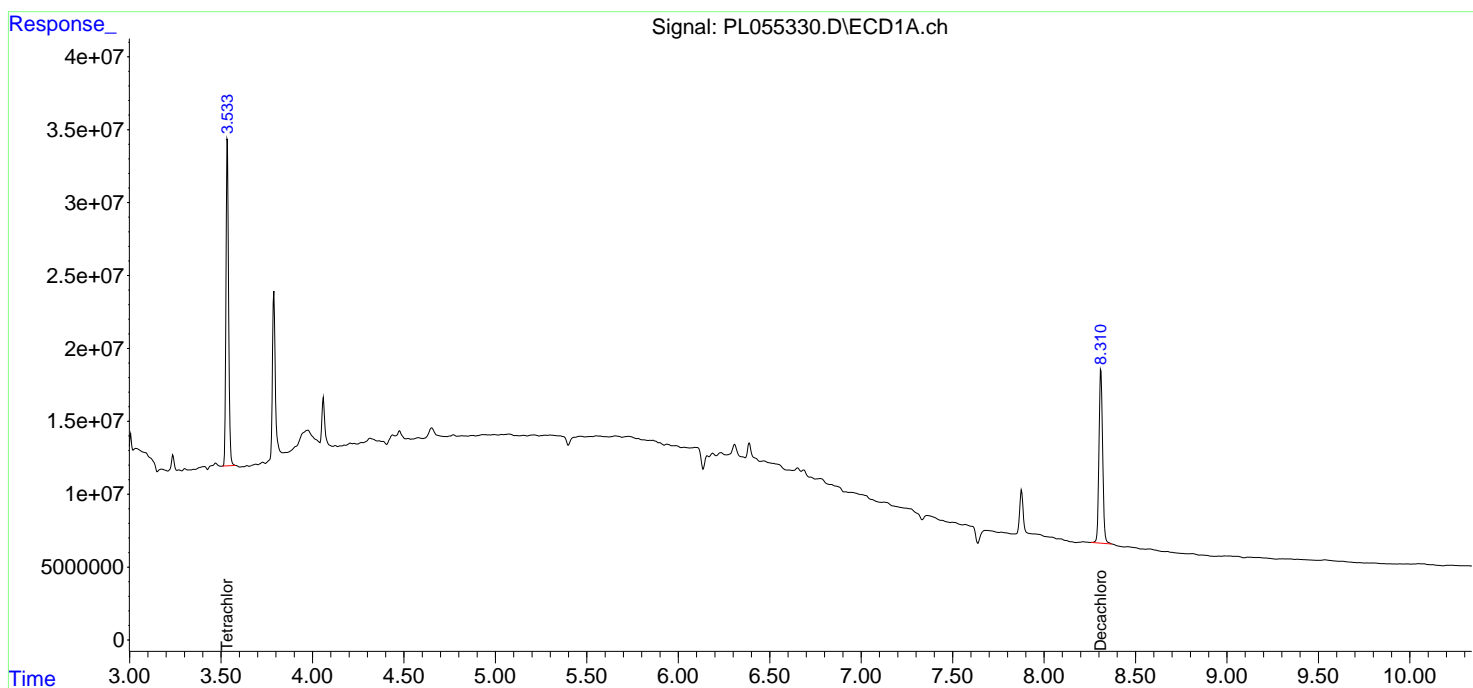
(f)=RT Delta > 1/2 Window (#)=Amounts differ by > 25% (m)=manual int.

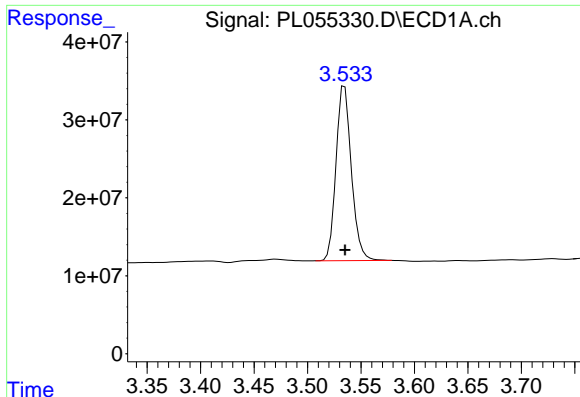
Data Path : Z:\pestpcbsrv\HPCHEM1\ECD\_L\Data\PL122719\  
 Data File : PL055330.D  
 Signal(s) : Signal #1: ECD1A.ch Signal #2: ECD2B.ch  
 Acq On : 27 Dec 2019 18:18  
 Operator : SG\AJ  
 Sample : K6439-06  
 Misc :  
 ALS Vial : 19 Sample Multiplier: 1

Instrument :  
 ECD\_L  
 ClientSampled :

Integration File signal 1: autoint1.e  
 Integration File signal 2: autoint2.e  
 Quant Time: Dec 28 00:34:41 2019  
 Quant Method : Z:\pestpcbsrv\HPCHEM1\ECD\_L\methods\PL122119.M  
 Quant Title : GC Extractables  
 QLast Update : Sat Dec 21 05:21:06 2019  
 Response via : Initial Calibration  
 Integrator: ChemStation

Volume Inj. : 1 µl  
 Signal #1 Phase : ZB-MR2 Signal #2 Phase: ZB-MR1  
 Signal #1 Info : 30M x 0.32mm x0.2 Signal #2 Info : 30M x 0.32mm x0.5µm

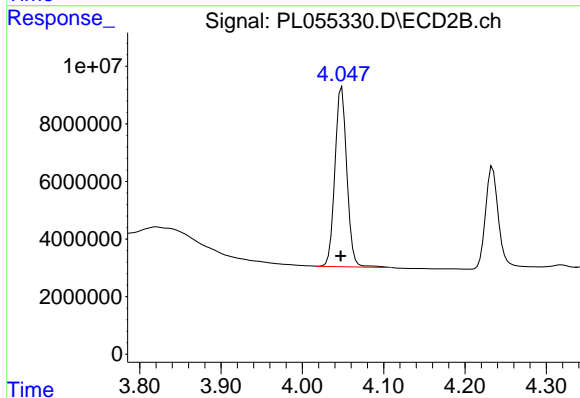




#1 Tetrachloro-m-xylene

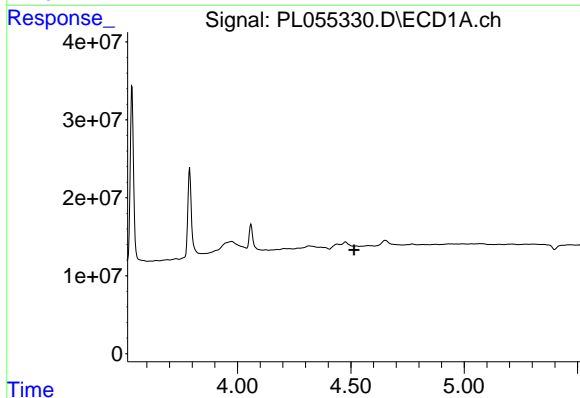
R.T.: 3.535 min  
 Delta R.T.: 0.000 min  
 Response: 224412693  
 Conc: 21.34 ng/ml

Instrument :  
 ECD\_L  
 ClientSampled :



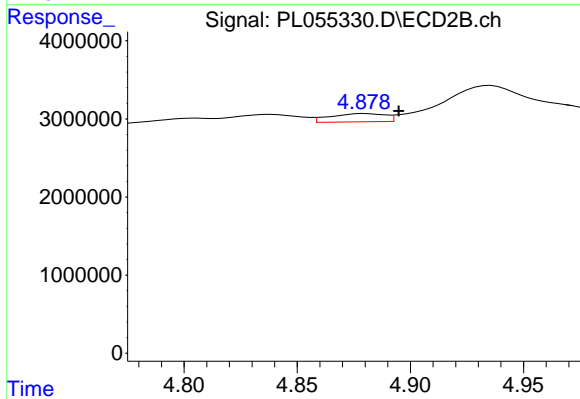
#1 Tetrachloro-m-xylene

R.T.: 4.049 min  
 Delta R.T.: 0.001 min  
 Response: 63577378  
 Conc: 24.06 ng/ml



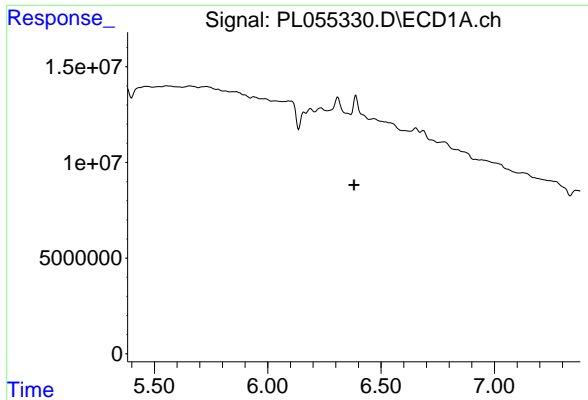
#6 beta-BHC

R.T.: 0.000 min  
 Exp R.T. : 4.514 min  
 Response: 0  
 Conc: N.D.



#6 beta-BHC

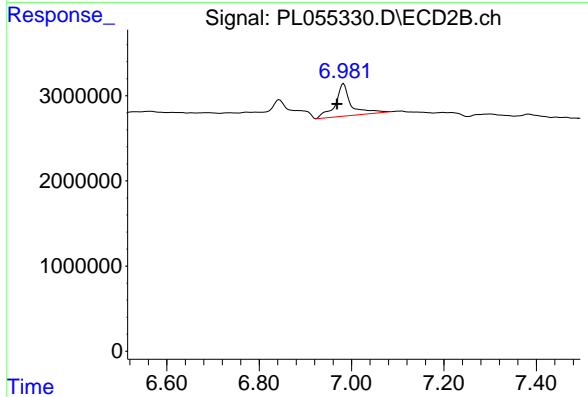
R.T.: 4.880 min  
 Delta R.T.: -0.015 min  
 Response: 1783866  
 Conc: 1.09 ng/ml



#15 Endosulfan II

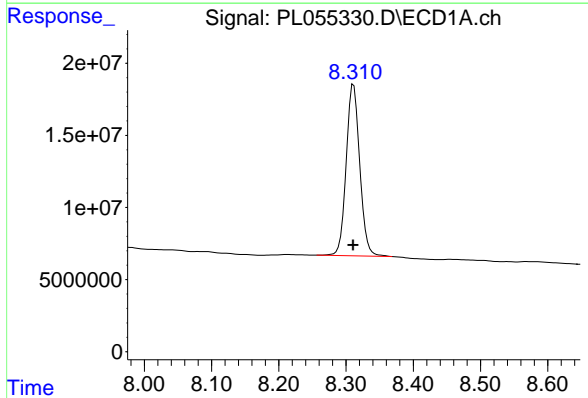
R.T.: 0.000 min  
 Exp R.T.: 6.381 min  
 Response: 0  
 Conc: N.D.

Instrument :  
 ECD\_L  
 ClientSampleId :



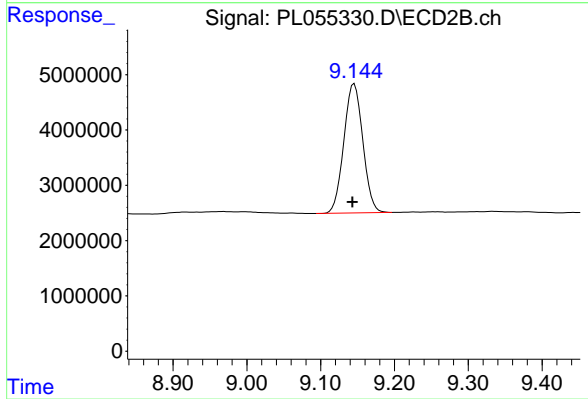
#15 Endosulfan II

R.T.: 6.983 min  
 Delta R.T.: 0.014 min  
 Response: 8933759  
 Conc: 3.77 ng/ml



#28 Decachlorobiphenyl

R.T.: 8.311 min  
 Delta R.T.: 0.000 min  
 Response: 166644581  
 Conc: 17.96 ng/ml



#28 Decachlorobiphenyl

R.T.: 9.146 min  
 Delta R.T.: 0.003 min  
 Response: 41789129  
 Conc: 18.93 ng/ml