

Data Path : Z:\pestpcbsrv\HPCHEM1\ECD\_L\Data\PL122723\  
 Data File : PL087511.D  
 Signal(s) : Signal #1: ECD1A.ch Signal #2: ECD2B.ch  
 Acq On : 27 Dec 2023 10:34  
 Operator : AR\AJ  
 Sample : 05899-01  
 Misc :  
 ALS Vial : 6 Sample Multiplier: 1

**Instrument :**  
 ECD\_L  
**ClientSampleId :**  
 GHIL-SS-08

**Manual Integrations**  
**APPROVED**  
 Reviewed By :Abdul Mirza 12/28/2023  
 Supervised By :Ankita Jodhani 12/28/2023

Integration File signal 1: autoint1.e  
 Integration File signal 2: autoint2.e  
 Quant Time: Dec 27 21:03:04 2023  
 Quant Method : Z:\pestpcbsrv\HPCHEM1\ECD\_L\methods\LTX121523.M  
 Quant Title : GC Extractables  
 QLast Update : Sat Dec 16 04:29:29 2023  
 Response via : Initial Calibration  
 Integrator: ChemStation

Volume Inj. : 2 µl  
 Signal #1 Phase : Rtx-CLPesticide 1 Signal #2 Phase: Rtx-CLPesticide 1  
 Signal #1 Info : 30M x 0.32mm x0.3 Signal #2 Info : 30M x 0.32mm x 0.25µm

Compound	RT#1	RT#2	Resp#1	Resp#2	ng/ml	ng/ml
-----						
System Monitoring Compounds						
1) SA Tetrachlo...	3.422	2.676	61108108	25921061	16.214	15.709
7) SA Decachlor...	8.982	7.863	47429876	23173795	14.411	13.642m
Target Compounds						
2) Toxaphene-1	6.140	5.243	427.2E6	162.2E6	12480.565	14378.796m
3) Toxaphene-2	6.542	5.886	119.7E6	213.0E6	4515.025	14418.882m#
4) Toxaphene-3	6.966	6.521f	780.3E6	159.3E6	6074.866	3393.552 #
5) Toxaphene-4	7.056	6.654	382.7E6	253.9E6	4144.008	3760.042m
6) Toxaphene-5	7.480	7.107	369.0E6	10167795	4748.892	442.801 #
-----						

(f)=RT Delta > 1/2 Window (#)=Amounts differ by > 25% (m)=manual int.

Data Path : Z:\pestpcbsrv\HPCHEM1\ECD\_L\Data\PL122723\  
 Data File : PL087511.D  
 Signal(s) : Signal #1: ECD1A.ch Signal #2: ECD2B.ch  
 Acq On : 27 Dec 2023 10:34  
 Operator : AR\AJ  
 Sample : 05899-01  
 Misc :  
 ALS Vial : 6 Sample Multiplier: 1

**Instrument :**

ECD\_L

**ClientSampleId :**

GHL-SS-08

**Manual Integrations**

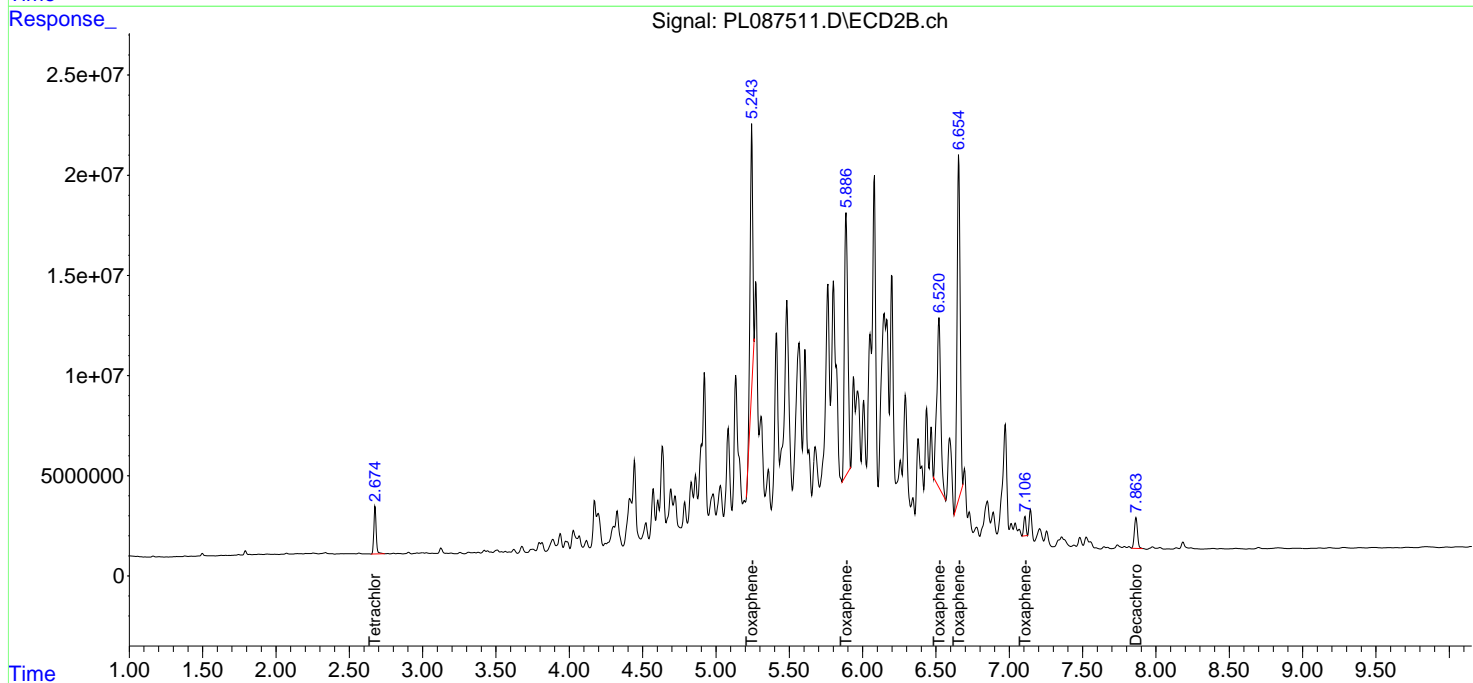
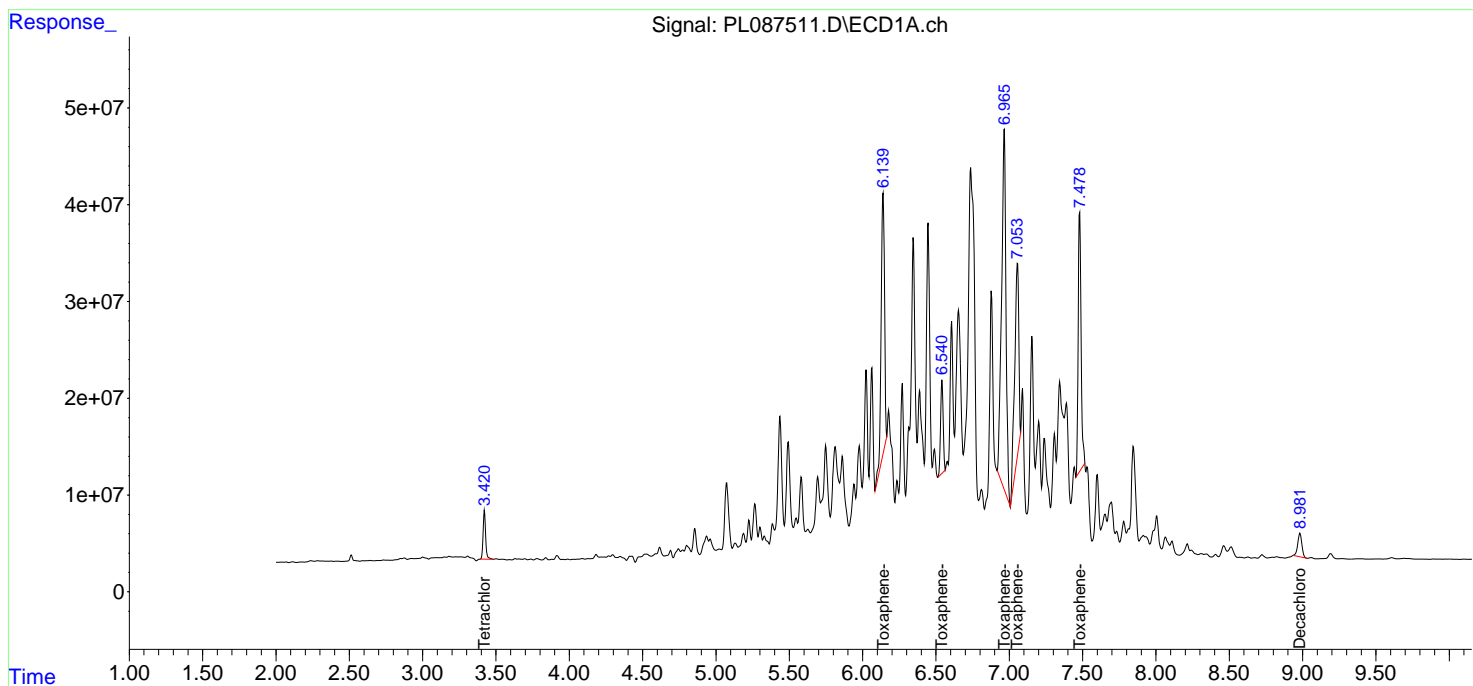
**APPROVED**

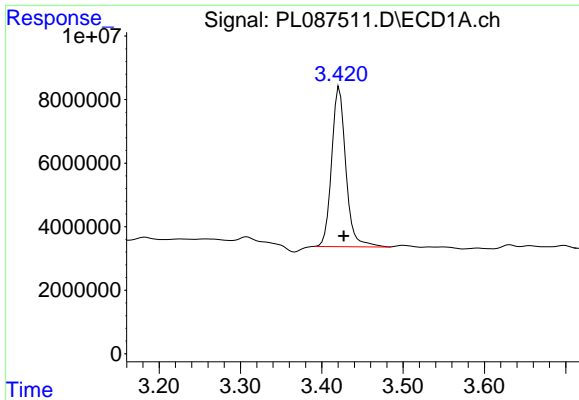
Reviewed By :Abdul Mirza 12/28/2023

Supervised By :Ankita Jodhani 12/28/2023

Integration File signal 1: autoint1.e  
 Integration File signal 2: autoint2.e  
 Quant Time: Dec 27 21:03:04 2023  
 Quant Method : Z:\pestpcbsrv\HPCHEM1\ECD\_L\methods\LTX121523.M  
 Quant Title : GC Extractables  
 QLast Update : Sat Dec 16 04:29:29 2023  
 Response via : Initial Calibration  
 Integrator: ChemStation

Volume Inj. : 2 µl  
 Signal #1 Phase : Rtx-CLPesticide 1 Signal #2 Phase: Rtx-CLPesticide 1  
 Signal #1 Info : 30M x 0.32mm x0.3 Signal #2 Info : 30M x 0.32mm x 0.25µm



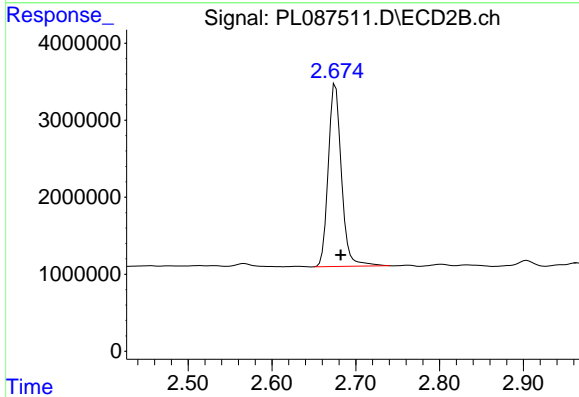


#1 Tetrachloro-m-xylene  
 R.T.: 3.422 min  
 Delta R.T.: -0.005 min  
 Response: 61108108  
 Conc: 16.21 ng/ml

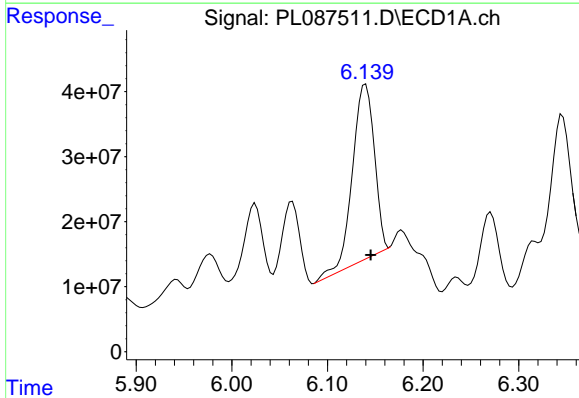
Instrument :  
 ECD\_L  
 ClientSampleId :  
 GHL-SS-08

Manual Integrations  
 APPROVED

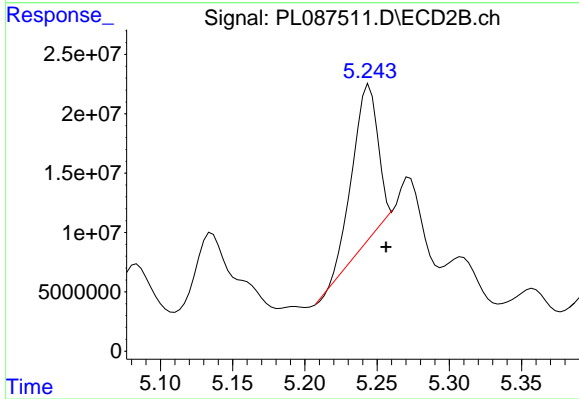
Reviewed By :Abdul Mirza 12/28/2023  
 Supervised By :Ankita Jodhani 12/28/2023



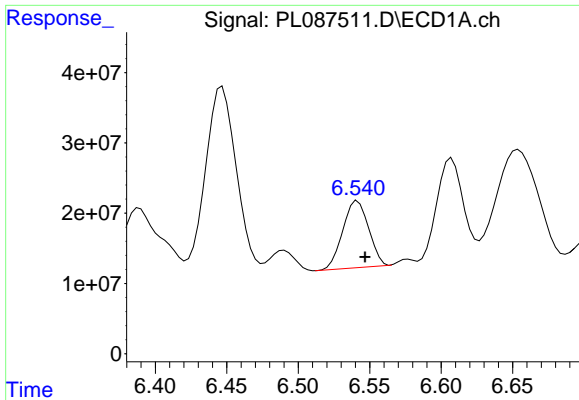
#1 Tetrachloro-m-xylene  
 R.T.: 2.676 min  
 Delta R.T.: -0.006 min  
 Response: 25921061  
 Conc: 15.71 ng/ml



#2 Toxaphene-1  
 R.T.: 6.140 min  
 Delta R.T.: -0.005 min  
 Response: 427191879  
 Conc: 12480.57 ng/ml



#2 Toxaphene-1  
 R.T.: 5.243 min  
 Delta R.T.: -0.013 min  
 Response: 162197714  
 Conc: 14378.80 ng/ml m



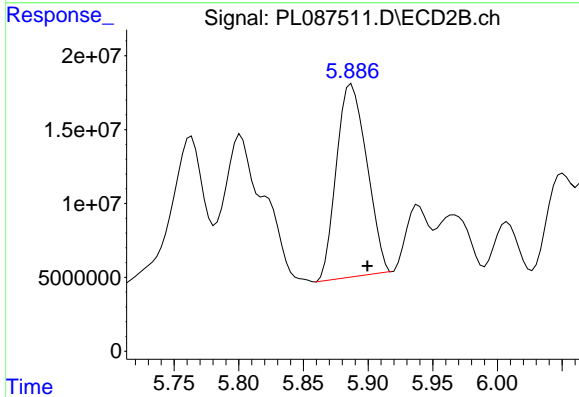
#3 Toxaphene-2

R.T.: 6.542 min  
 Delta R.T.: -0.005 min  
 Response: 119673206  
 Conc: 4515.02 ng/m

Instrument :  
 ECD\_L  
 ClientSampleId :  
 GHL-SS-08

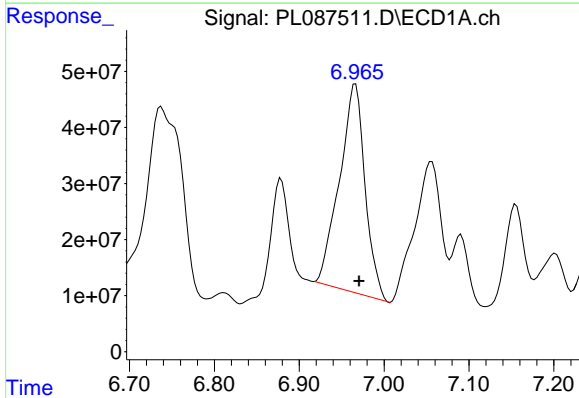
Manual Integrations  
 APPROVED

Reviewed By :Abdul Mirza 12/28/2023  
 Supervised By :Ankita Jodhani 12/28/2023



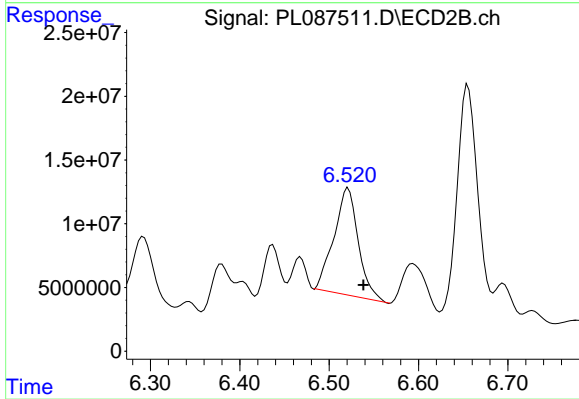
#3 Toxaphene-2

R.T.: 5.886 min  
 Delta R.T.: -0.014 min  
 Response: 213024296  
 Conc: 14418.88 ng/ml m



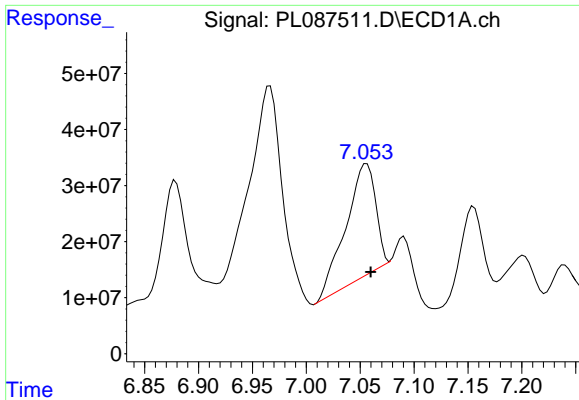
#4 Toxaphene-3

R.T.: 6.966 min  
 Delta R.T.: -0.004 min  
 Response: 780320414  
 Conc: 6074.87 ng/ml



#4 Toxaphene-3

R.T.: 6.521 min  
 Delta R.T.: -0.017 min  
 Response: 159282947  
 Conc: 3393.55 ng/ml



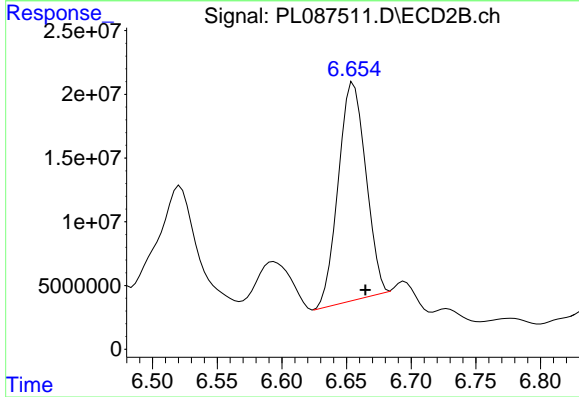
#5 Toxaphene-4

R.T.: 7.056 min  
 Delta R.T.: -0.004 min  
 Response: 382738740  
 Conc: 4144.01 ng/ml

Instrument :  
 ECD\_L  
 ClientSampleId :  
 GHL-SS-08

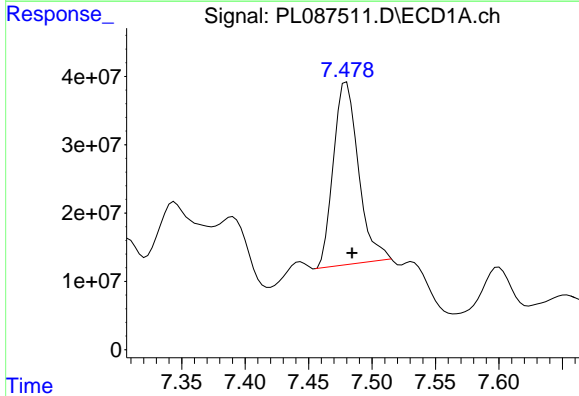
Manual Integrations  
 APPROVED

Reviewed By :Abdul Mirza 12/28/2023  
 Supervised By :Ankita Jodhani 12/28/2023



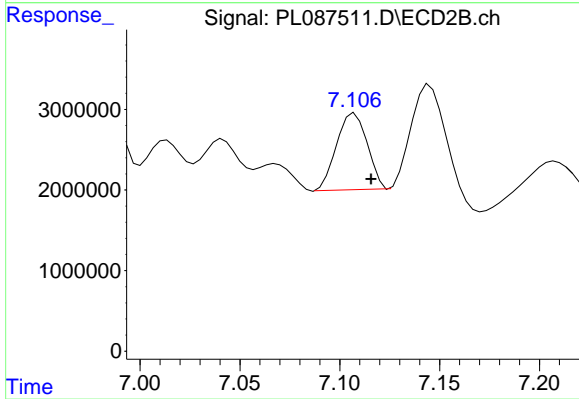
#5 Toxaphene-4

R.T.: 6.654 min  
 Delta R.T.: -0.011 min  
 Response: 253901379  
 Conc: 3760.04 ng/ml m



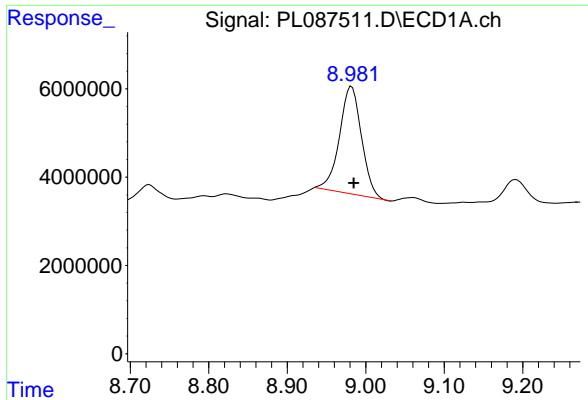
#6 Toxaphene-5

R.T.: 7.480 min  
 Delta R.T.: -0.005 min  
 Response: 369044438  
 Conc: 4748.89 ng/ml



#6 Toxaphene-5

R.T.: 7.107 min  
 Delta R.T.: -0.008 min  
 Response: 10167795  
 Conc: 442.80 ng/ml



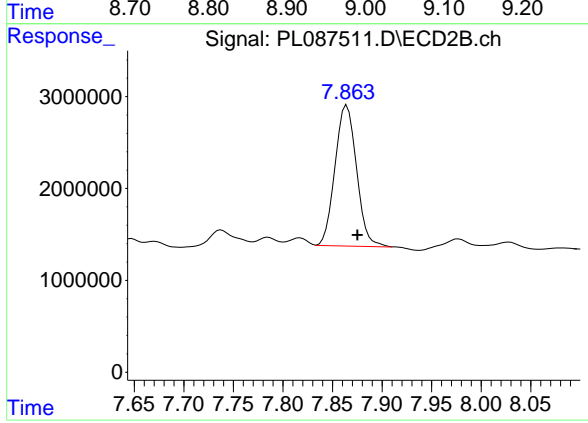
#7 Decachlorobiphenyl

R.T.: 8.982 min  
 Delta R.T.: -0.003 min  
 Response: 47429876  
 Conc: 14.41 ng/ml

Instrument :  
 ECD\_L  
 ClientSampleId :  
 GHL-SS-08

Manual Integrations  
 APPROVED

Reviewed By :Abdul Mirza 12/28/2023  
 Supervised By :Ankita Jodhani 12/28/2023



#7 Decachlorobiphenyl

R.T.: 7.863 min  
 Delta R.T.: -0.012 min  
 Response: 23173795  
 Conc: 13.64 ng/ml m