

Data Path : Z:\pestpcbsrv\HPCHEM1\ECD_L\Data\PL122723\
 Data File : PL087525.D
 Signal(s) : Signal #1: ECD1A.ch Signal #2: ECD2B.ch
 Acq On : 27 Dec 2023 16:00
 Operator : AR\AJ
 Sample : 06027-01
 Misc :
 ALS Vial : 15 Sample Multiplier: 1

Instrument :
 ECD_L
ClientSampleId :
 CONTAINMENT

Manual Integrations
APPROVED
 Reviewed By :Abdul Mirza 12/28/2023
 Supervised By :Ankita Jodhani 12/28/2023

Integration File signal 1: autoint1.e
 Integration File signal 2: autoint2.e
 Quant Time: Dec 27 20:40:10 2023
 Quant Method : Z:\pestpcbsrv\HPCHEM1\ECD_L\methods\PL121523.M
 Quant Title : GC Extractables
 QLast Update : Sat Dec 16 04:03:23 2023
 Response via : Initial Calibration
 Integrator: ChemStation

Volume Inj. : 1 µl
 Signal #1 Phase : ZB-MR2 Signal #2 Phase: ZB-MR1
 Signal #1 Info : 30M x 0.32mm x0.2 Signal #2 Info : 30M x 0.32mm x0.5µm

Compound	RT#1	RT#2	Resp#1	Resp#2	ng/ml	ng/ml

System Monitoring Compounds						
1) SA Tetrachlo...	3.421	2.677	48642232	20953763	12.925	12.448
28) SA Decachlor...	8.980	7.863	43121373	20340480	12.646	12.043m

Target Compounds

(f)=RT Delta > 1/2 Window (#)=Amounts differ by > 25% (m)=manual int.

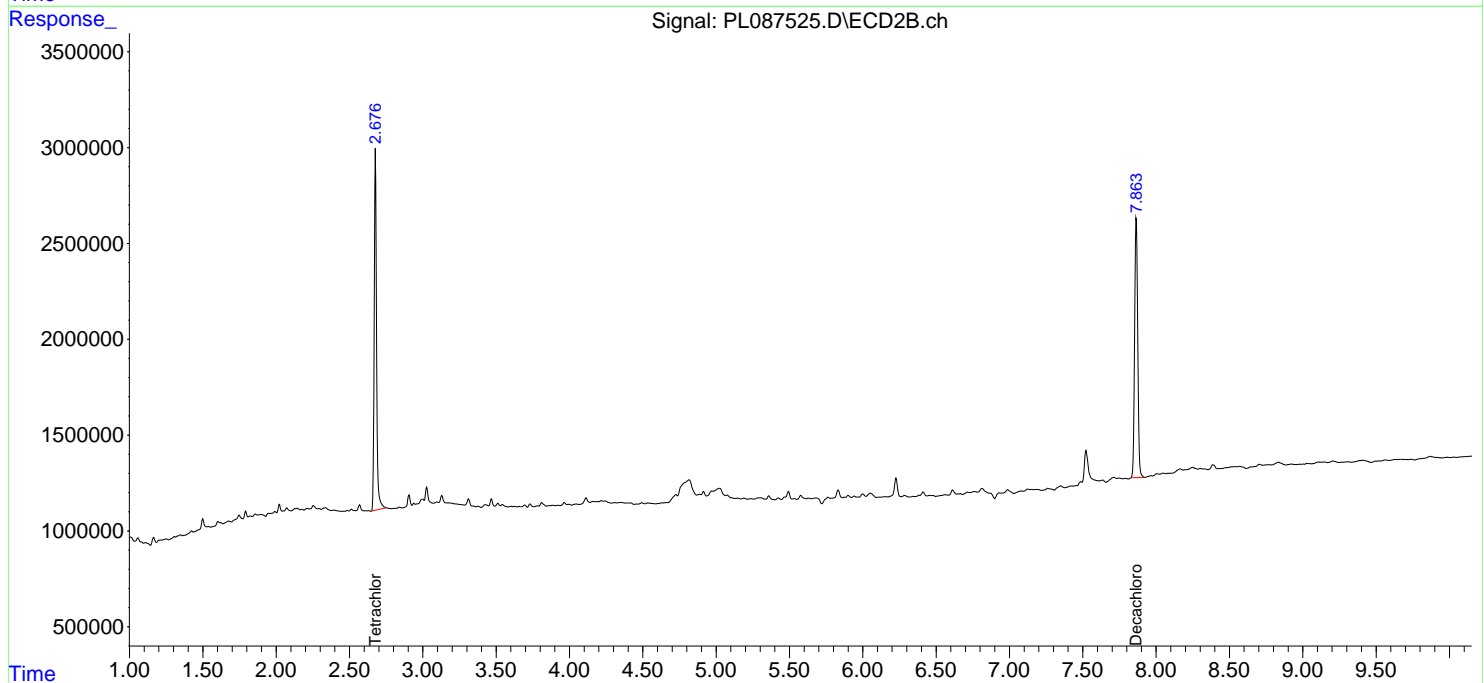
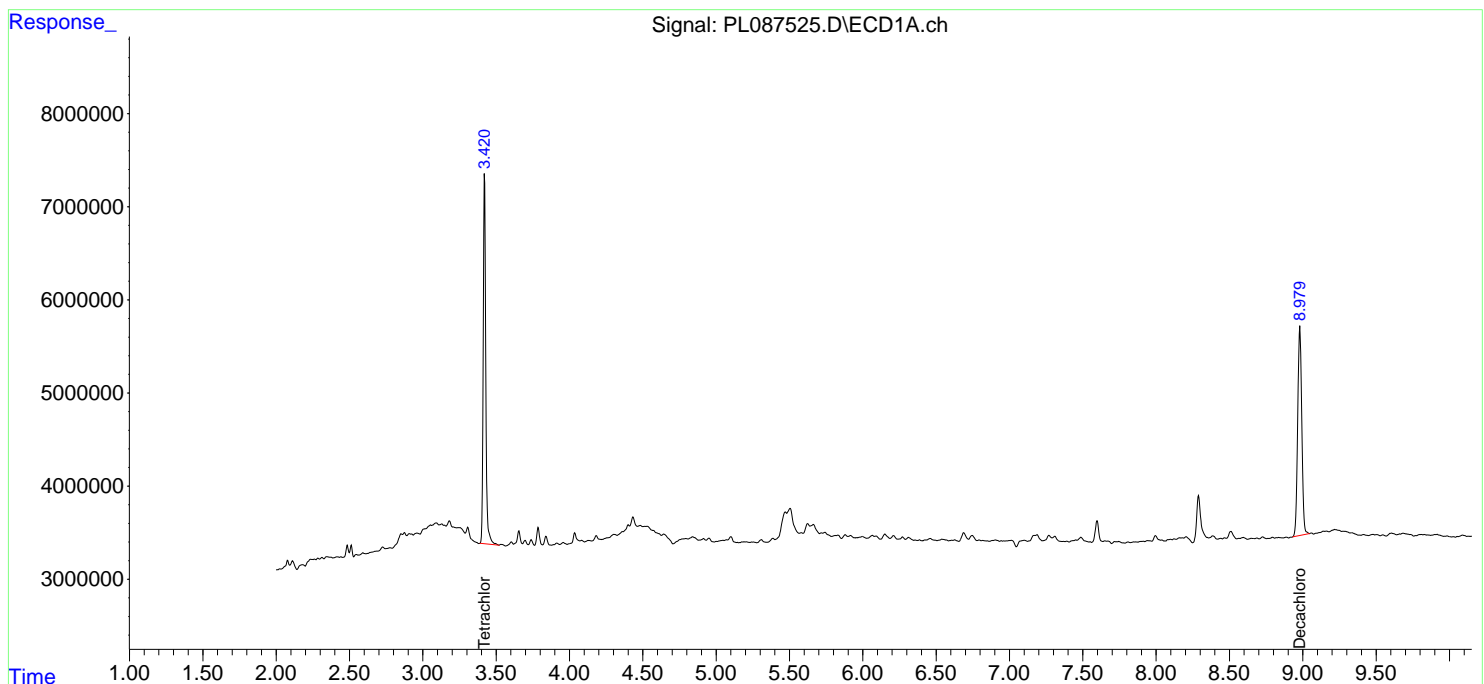
Data Path : Z:\pestpcbsrv\HPCHEM1\ECD_L\Data\PL122723\
 Data File : PL087525.D
 Signal(s) : Signal #1: ECD1A.ch Signal #2: ECD2B.ch
 Acq On : 27 Dec 2023 16:00
 Operator : AR\AJ
 Sample : 06027-01
 Misc :
 ALS Vial : 15 Sample Multiplier: 1

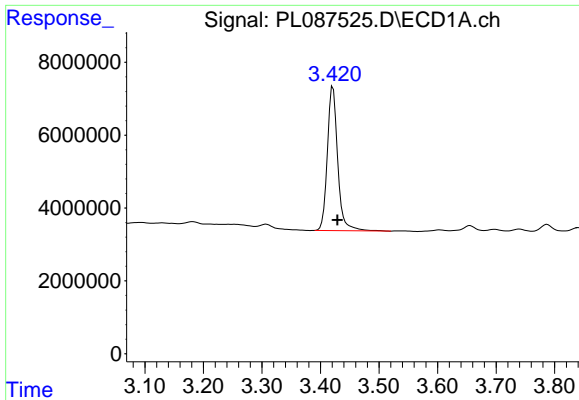
Instrument :
 ECD_L
ClientSampleId :
 CONTAINMENT

Manual Integrations
APPROVED
 Reviewed By :Abdul Mirza 12/28/2023
 Supervised By :Ankita Jodhani 12/28/2023

Integration File signal 1: autoint1.e
 Integration File signal 2: autoint2.e
 Quant Time: Dec 27 20:40:10 2023
 Quant Method : Z:\pestpcbsrv\HPCHEM1\ECD_L\methods\PL121523.M
 Quant Title : GC Extractables
 QLast Update : Sat Dec 16 04:03:23 2023
 Response via : Initial Calibration
 Integrator: ChemStation

Volume Inj. : 1 µl
 Signal #1 Phase : ZB-MR2 Signal #2 Phase: ZB-MR1
 Signal #1 Info : 30M x 0.32mm x0.2 Signal #2 Info : 30M x 0.32mm x0.5µm

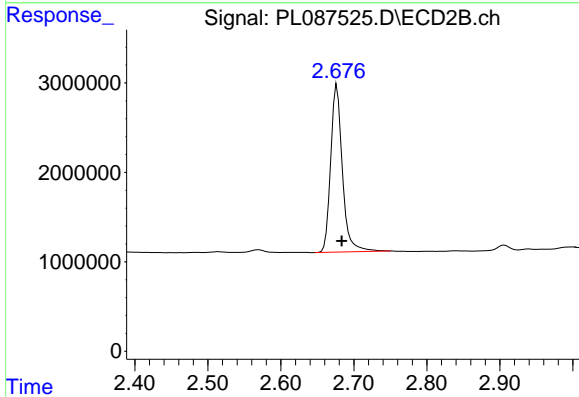




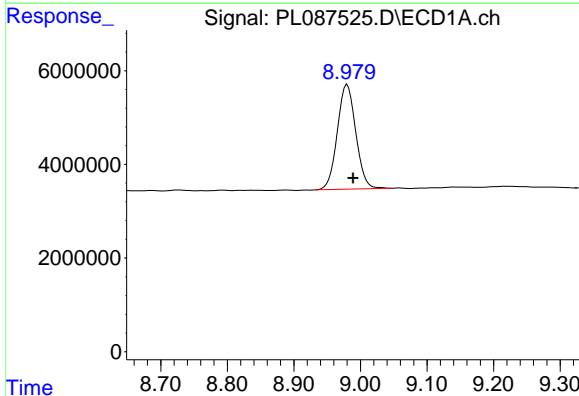
#1 Tetrachloro-m-xylene
 R.T.: 3.421 min
 Delta R.T.: -0.008 min
 Response: 48642232
 Conc: 12.92 ng/ml

Instrument :
 ECD_L
 ClientSampleId :
 CONTAINMENT

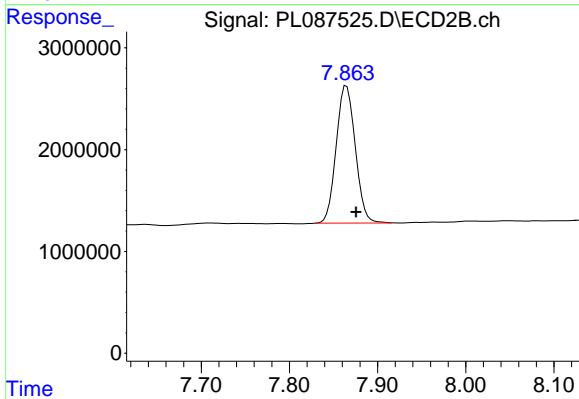
Manual Integrations
APPROVED
 Reviewed By :Abdul Mirza 12/28/2023
 Supervised By :Ankita Jodhani 12/28/2023



#1 Tetrachloro-m-xylene
 R.T.: 2.677 min
 Delta R.T.: -0.007 min
 Response: 20953763
 Conc: 12.45 ng/ml



#28 Decachlorobiphenyl
 R.T.: 8.980 min
 Delta R.T.: -0.009 min
 Response: 43121373
 Conc: 12.65 ng/ml



#28 Decachlorobiphenyl
 R.T.: 7.863 min
 Delta R.T.: -0.012 min
 Response: 20340480
 Conc: 12.04 ng/ml m