

Data Path : Z:\pestpcbsrv\HPCHEM1\ECD_L\Data\PL122821\
 Data File : PL071695.D
 Signal(s) : Signal #1: ECD1A.ch Signal #2: ECD2B.ch
 Acq On : 28 Dec 2021 10:42
 Operator : AR\AJ
 Sample : M5196-03DL 5X
 Misc :
 ALS Vial : 6 Sample Multiplier: 1

Instrument :
 ECD_L
 ClientSampleId :
 COMPOSITE-SAMPLE-2-SHALLOWDL

Integration File signal 1: autoint1.e
 Integration File signal 2: autoint2.e
 Quant Time: Dec 28 15:18:36 2021
 Quant Method : Z:\pestpcbsrv\HPCHEM1\ECD_L\methods\PL122721.M
 Quant Title : GC Extractables
 QLast Update : Mon Dec 27 14:06:28 2021
 Response via : Initial Calibration
 Integrator: ChemStation

Volume Inj. : 1 µl
 Signal #1 Phase : ZB-MR2 Signal #2 Phase: ZB-MR1
 Signal #1 Info : 30M x 0.32mm x0.2 Signal #2 Info : 30M x 0.32mm x0.5µm

Compound	RT#1	RT#2	Resp#1	Resp#2	ng/ml	ng/ml

System Monitoring Compounds						
1) SA Tetrachlo...	4.564	5.494	2252907	5542276	3.472	3.248
28) SA Decachlor...	10.324	11.388	2817653	4419803	3.785	3.527
Target Compounds						
4) MA Heptachlor	0.000	7.152f	0	132001	N.D.	0.057 #
5) MB Aldrin	0.000	7.474f	0	76800	N.D.	0.035 #
6) B beta-BHC	0.000	6.757f	0	8341854	N.D.	8.103 #
9) A Endosulfan I	7.388	8.394f	276739	28880	0.362	0.017 #
10) B gamma-Chl...	7.260f	8.209f	197699	24607765	0.231	12.615 #
11) B alpha-Chl...	0.000	8.312	0	643619	N.D.	0.345 #
12) B 4,4'-DDE	7.561	8.497	21739106	52656171	29.173	29.752
14) MA Endrin	7.980	8.895	120616	614029	0.162	0.407 #
16) A 4,4'-DDD	8.148	9.037	10471238	21498339	17.649	16.555
17) MA 4,4'-DDT	8.407	9.354	1253479	2635823	1.944	1.931
18) B Endrin al...	0.000	9.267	0	89751	N.D.	0.078 #
20) A Methoxychlor	8.985f	0.000	585155	0	1.570	N.D. #
21) B Endrin ke...	0.000	10.024f	0	813814	N.D.	0.599 #
23) Chlordane-1	0.000	6.902f	0	442900	N.D.	6.579 #
24) Chlordane-2	6.572	7.474	350807	76800	10.781	1.042 #
25) Chlordane-3	7.260f	8.209f	197699	24607765	2.292	89.053 #
26) Chlordane-4	0.000	8.312	0	643619	N.D.	1.984 #
27) Chlordane-5	0.000	9.189	0	34584	N.D.	0.637 #

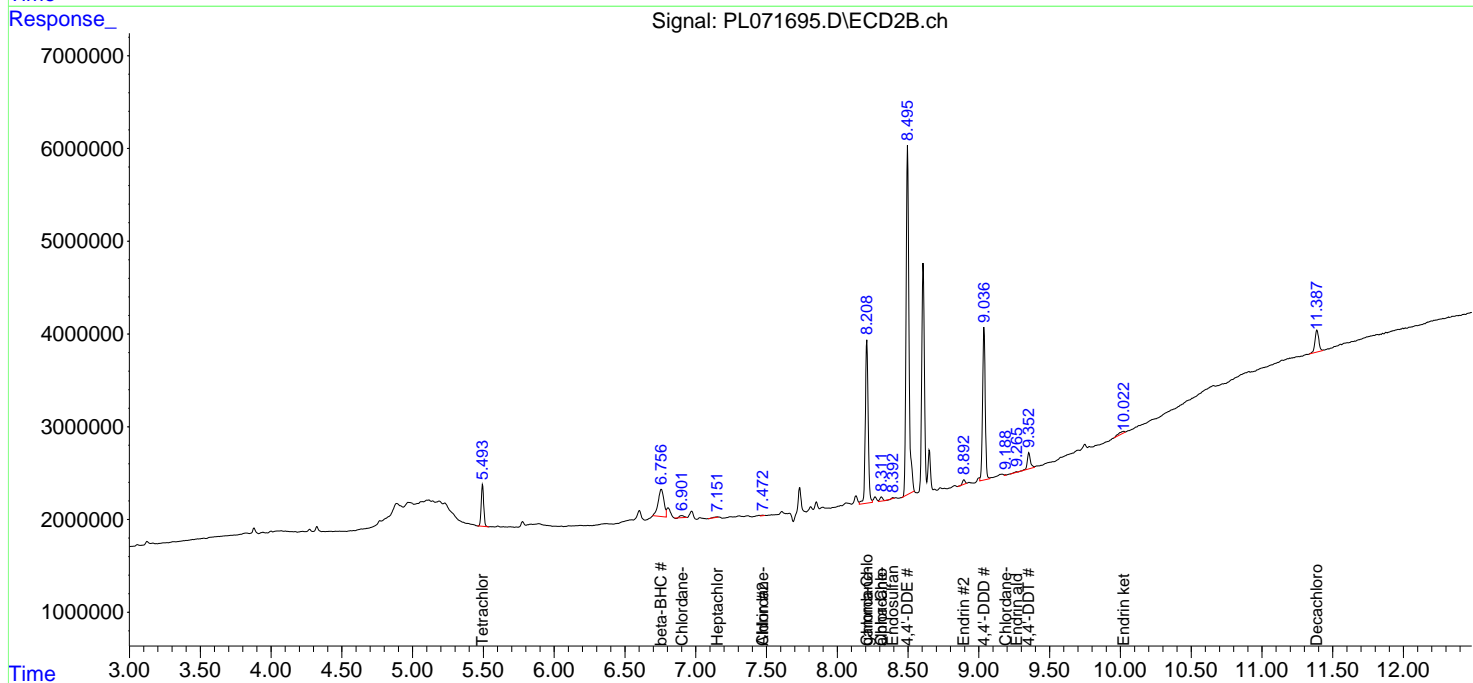
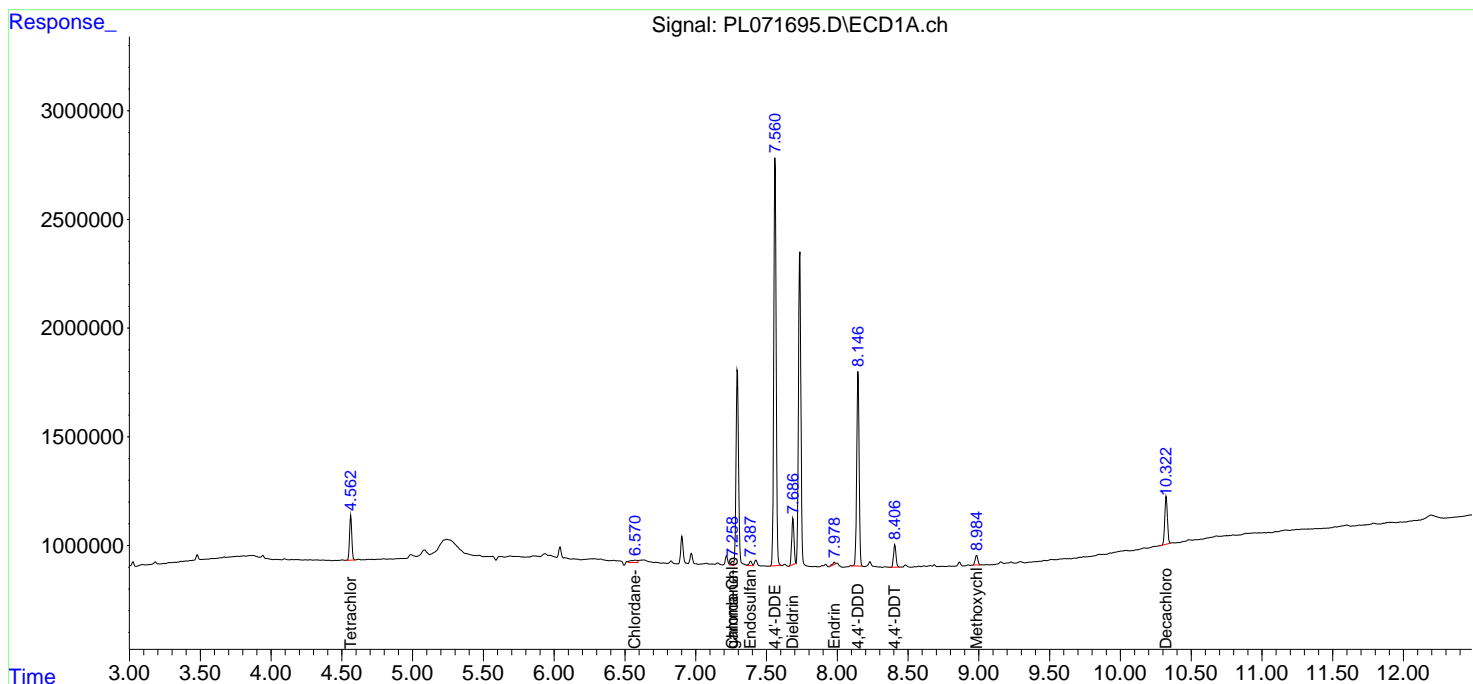
(f)=RT Delta > 1/2 Window (#)=Amounts differ by > 25% (m)=manual int.

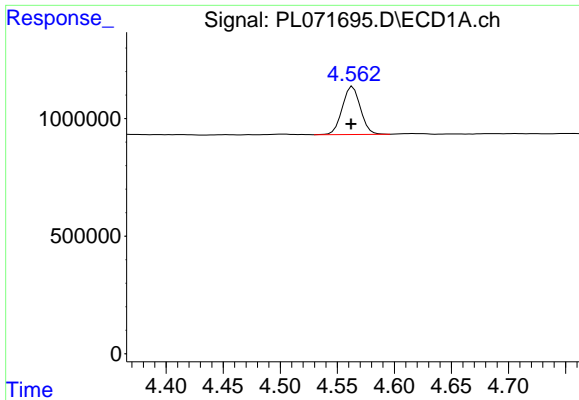
Data Path : Z:\pestpcbsrv\HPCHEM1\ECD_L\Data\PL122821\
 Data File : PL071695.D
 Signal(s) : Signal #1: ECD1A.ch Signal #2: ECD2B.ch
 Acq On : 28 Dec 2021 10:42
 Operator : AR\AJ
 Sample : M5196-03DL 5X
 Misc :
 ALS Vial : 6 Sample Multiplier: 1

Instrument :
 ECD_L
 ClientSampleId :
 COMPOSITE-SAMPLE-2-SHALLOWDL

Integration File signal 1: autoint1.e
 Integration File signal 2: autoint2.e
 Quant Time: Dec 28 15:18:36 2021
 Quant Method : Z:\pestpcbsrv\HPCHEM1\ECD_L\methods\PL122721.M
 Quant Title : GC Extractables
 QLast Update : Mon Dec 27 14:06:28 2021
 Response via : Initial Calibration
 Integrator: ChemStation

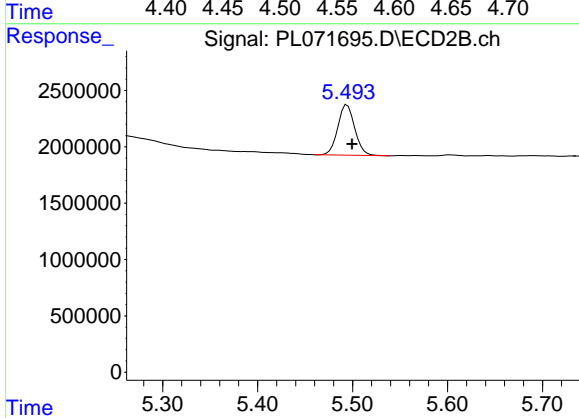
Volume Inj. : 1 µl
 Signal #1 Phase : ZB-MR2 Signal #2 Phase: ZB-MR1
 Signal #1 Info : 30M x 0.32mm x0.2 Signal #2 Info : 30M x 0.32mm x0.5µm



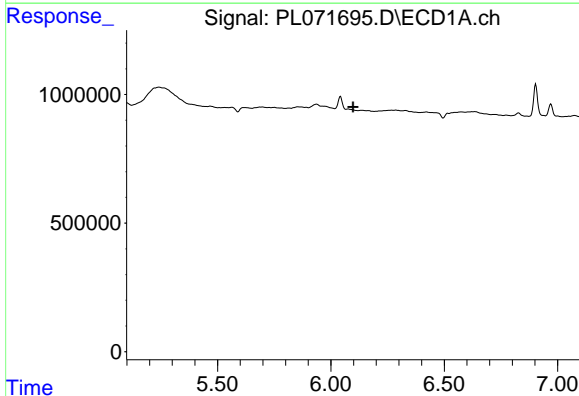


#1 Tetrachloro-m-xylene
 R.T.: 4.564 min
 Delta R.T.: 0.002 min
 Response: 2252907
 Conc: 3.47 ng/ml

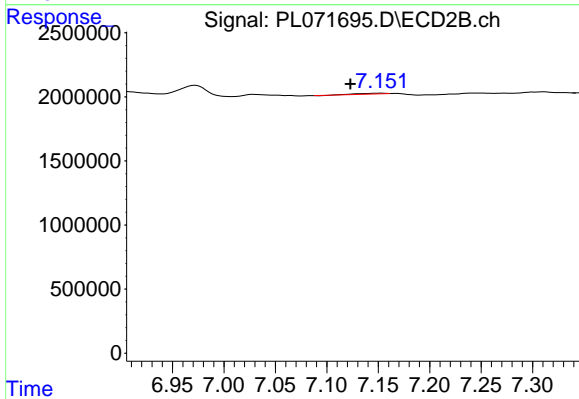
Instrument :
 ECD_L
 ClientSampleId :
 COMPOSITE-SAMPLE-2-SHALLOWDL



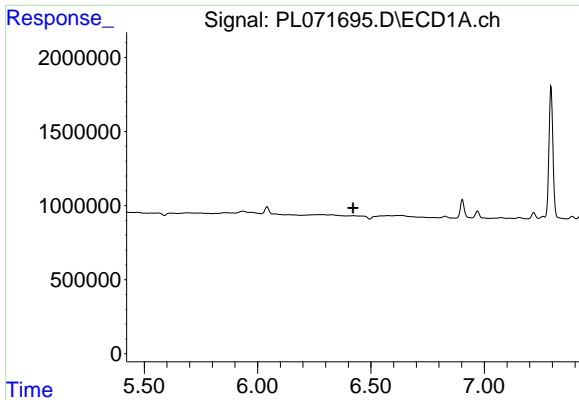
#1 Tetrachloro-m-xylene
 R.T.: 5.494 min
 Delta R.T.: -0.005 min
 Response: 5542276
 Conc: 3.25 ng/ml



#4 Heptachlor
 R.T.: 0.000 min
 Exp R.T. : 6.098 min
 Response: 0
 Conc: N.D.

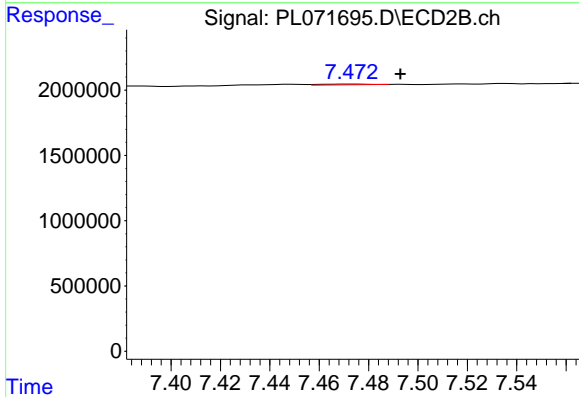


#4 Heptachlor
 R.T.: 7.152 min
 Delta R.T.: 0.029 min
 Response: 132001
 Conc: 0.06 ng/ml

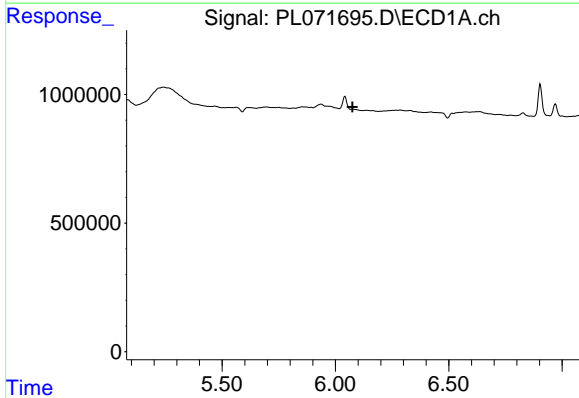


#5 Aldrin
 R.T.: 0.000 min
 Exp R.T.: 6.422 min
 Response: 0
 Conc: N.D.

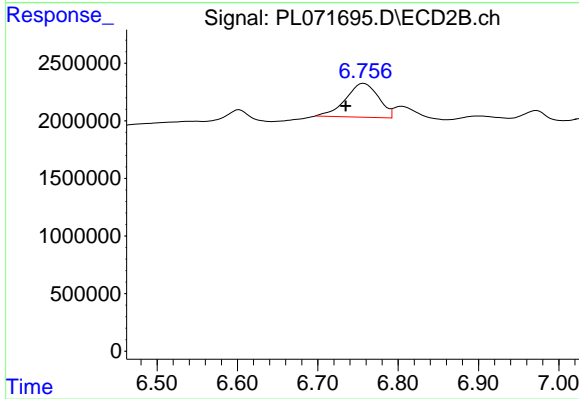
Instrument :
 ECD_L
 ClientSampleId :
 COMPOSITE-SAMPLE-2-SHALLOWDL



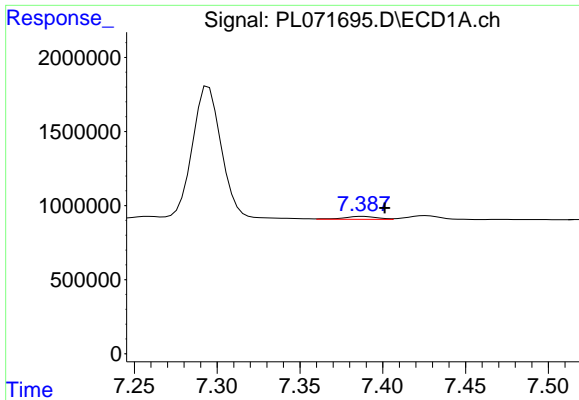
#5 Aldrin
 R.T.: 7.474 min
 Delta R.T.: -0.018 min
 Response: 76800
 Conc: 0.03 ng/ml



#6 beta-BHC
 R.T.: 0.000 min
 Exp R.T.: 6.076 min
 Response: 0
 Conc: N.D.

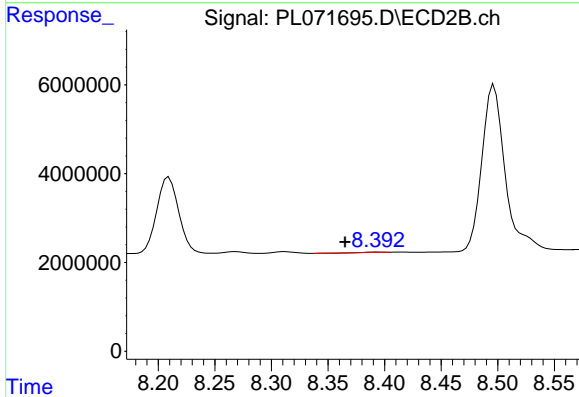


#6 beta-BHC
 R.T.: 6.757 min
 Delta R.T.: 0.022 min
 Response: 8341854
 Conc: 8.10 ng/ml

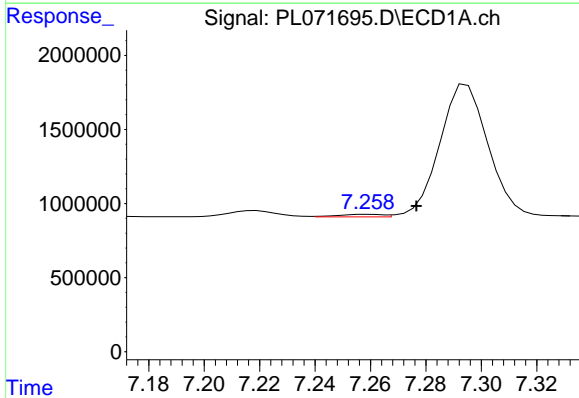


#9 Endosulfan I
 R.T.: 7.388 min
 Delta R.T.: -0.013 min
 Response: 276739
 Conc: 0.36 ng/ml

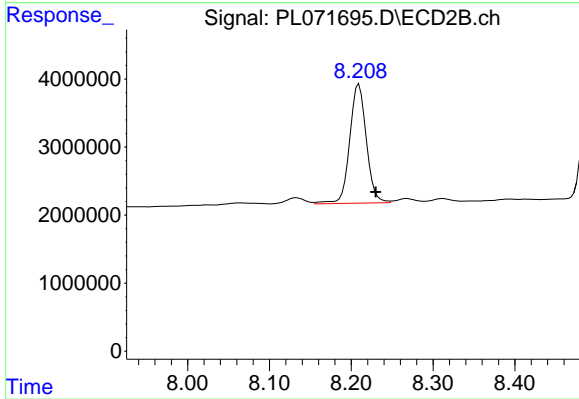
Instrument : ECD_L
 ClientSampleId : COMPOSITE-SAMPLE-2-SHALLOWDL



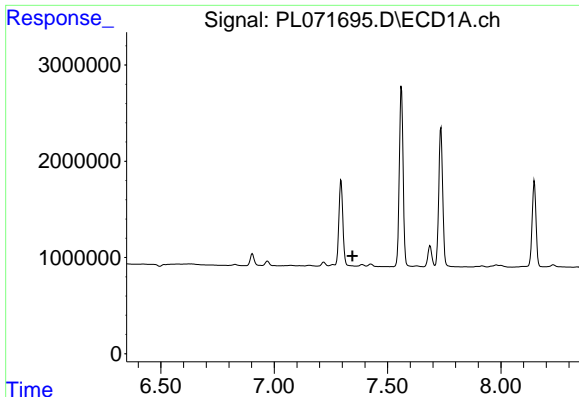
#9 Endosulfan I
 R.T.: 8.394 min
 Delta R.T.: 0.028 min
 Response: 28880
 Conc: 0.02 ng/ml



#10 gamma-Chlordane
 R.T.: 7.260 min
 Delta R.T.: -0.017 min
 Response: 197699
 Conc: 0.23 ng/ml



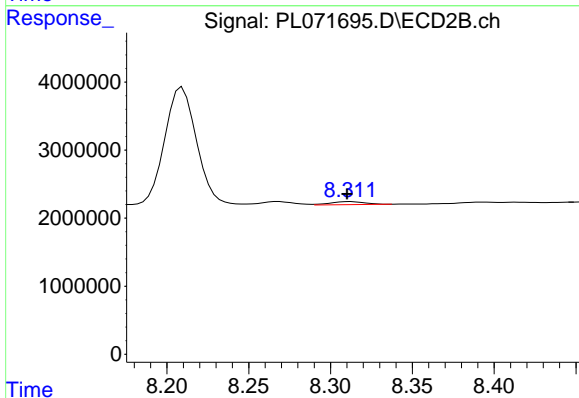
#10 gamma-Chlordane
 R.T.: 8.209 min
 Delta R.T.: -0.021 min
 Response: 24607765
 Conc: 12.61 ng/ml



#11 alpha-Chlordane

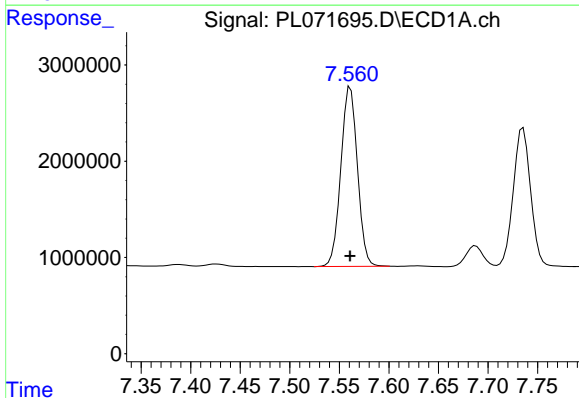
R.T.: 0.000 min
 Exp R.T.: 7.346 min
 Response: 0
 Conc: N.D.

Instrument :
 ECD_L
 ClientSampleId :
 COMPOSITE-SAMPLE-2-SHALLOWDL



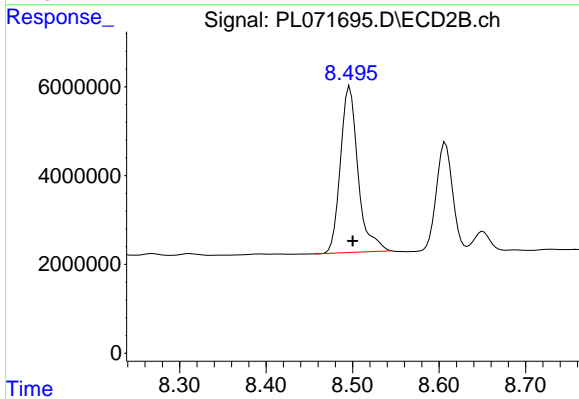
#11 alpha-Chlordane

R.T.: 8.312 min
 Delta R.T.: 0.002 min
 Response: 643619
 Conc: 0.35 ng/ml



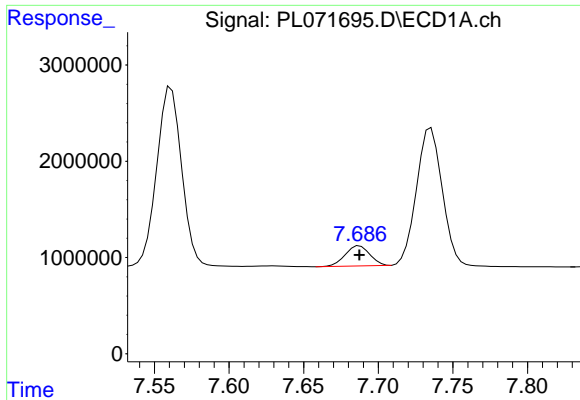
#12 4,4'-DDE

R.T.: 7.561 min
 Delta R.T.: 0.000 min
 Response: 21739106
 Conc: 29.17 ng/ml



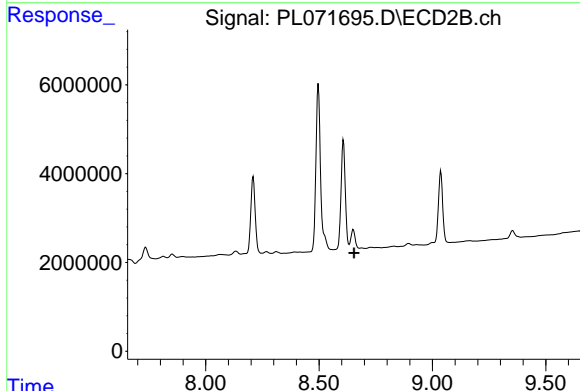
#12 4,4'-DDE

R.T.: 8.497 min
 Delta R.T.: -0.003 min
 Response: 52656171
 Conc: 29.75 ng/ml

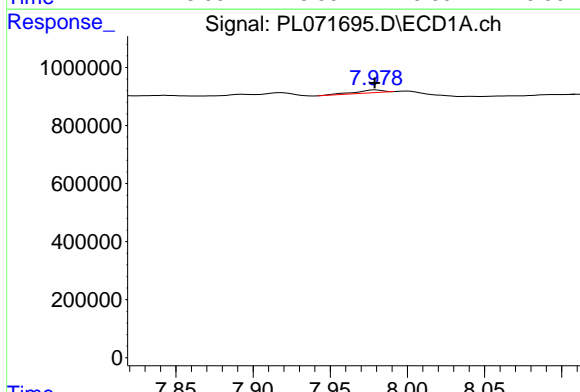


#13 Dieldrin
 R.T.: 7.688 min
 Delta R.T.: 0.000 min
 Response: 2407418
 Conc: 2.92 ng/ml

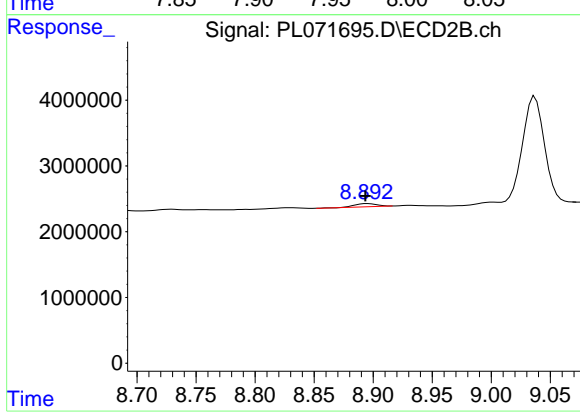
Instrument : ECD_L
 ClientSampleId : COMPOSITE-SAMPLE-2-SHALLOWDL



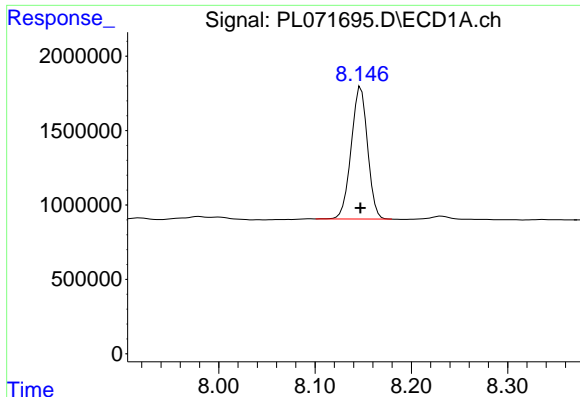
#13 Dieldrin
 R.T.: 8.651 min
 Delta R.T.: -0.003 min
 Response: -16817425
 Conc: N.D.



#14 Endrin
 R.T.: 7.980 min
 Delta R.T.: 0.000 min
 Response: 120616
 Conc: 0.16 ng/ml



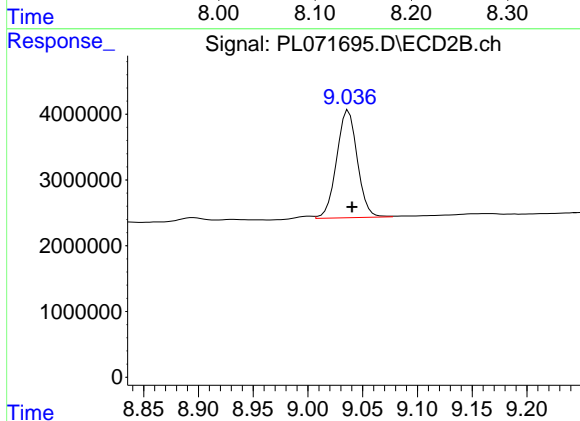
#14 Endrin
 R.T.: 8.895 min
 Delta R.T.: 0.002 min
 Response: 614029
 Conc: 0.41 ng/ml



#16 4,4'-DDD

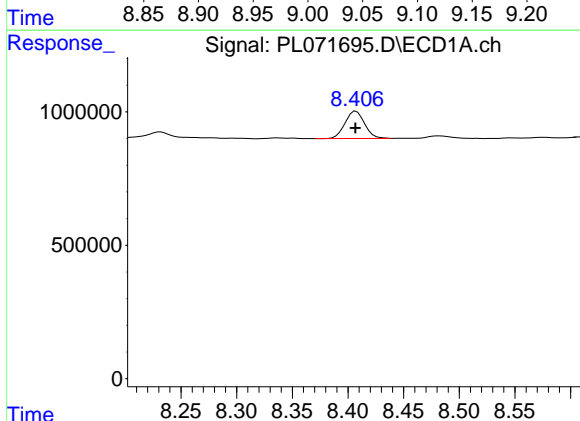
R.T.: 8.148 min
 Delta R.T.: 0.000 min
 Response: 10471238
 Conc: 17.65 ng/ml

Instrument :
 ECD_L
 ClientSampleId :
 COMPOSITE-SAMPLE-2-SHALLOWDL



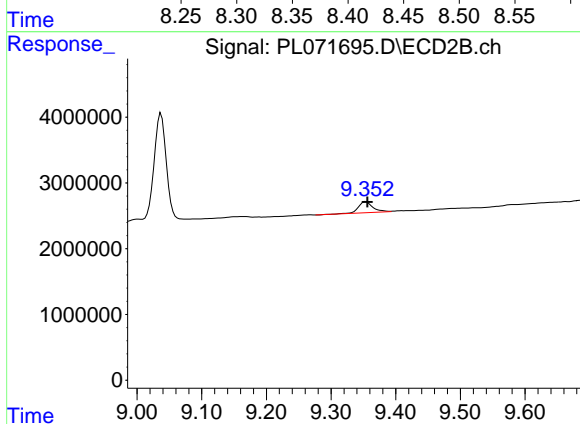
#16 4,4'-DDD

R.T.: 9.037 min
 Delta R.T.: -0.003 min
 Response: 21498339
 Conc: 16.55 ng/ml



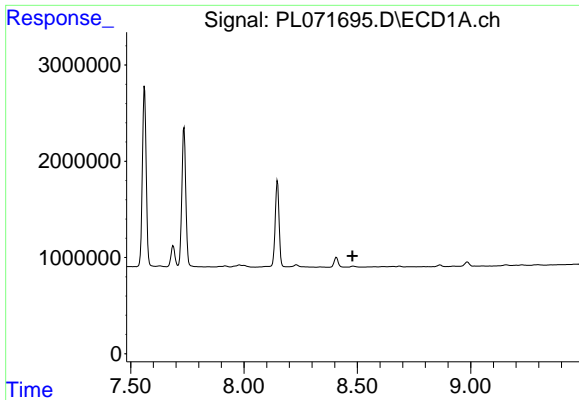
#17 4,4'-DDT

R.T.: 8.407 min
 Delta R.T.: 0.000 min
 Response: 1253479
 Conc: 1.94 ng/ml



#17 4,4'-DDT

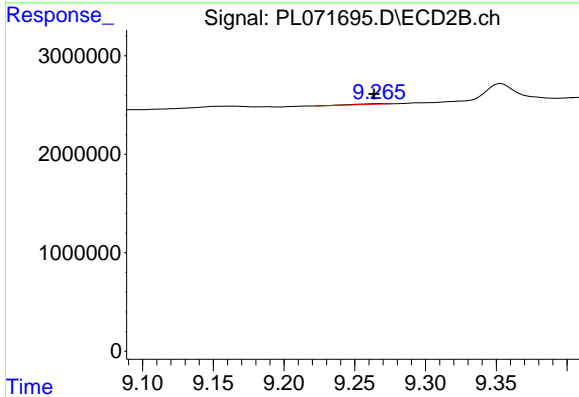
R.T.: 9.354 min
 Delta R.T.: -0.002 min
 Response: 2635823
 Conc: 1.93 ng/ml



#18 Endrin aldehyde

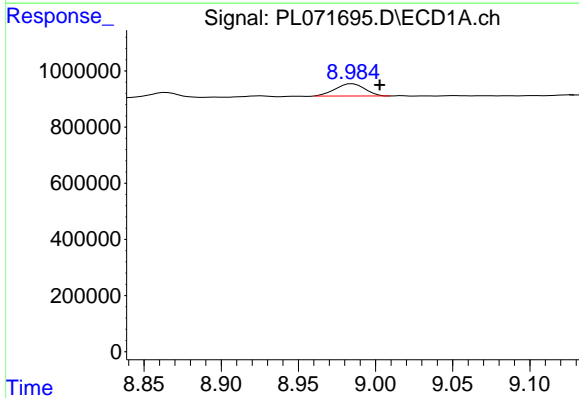
R.T.: 0.000 min
 Exp R.T.: 8.479 min
 Response: 0
 Conc: N.D.

Instrument :
 ECD_L
 ClientSampleId :
 COMPOSITE-SAMPLE-2-SHALLOWDL



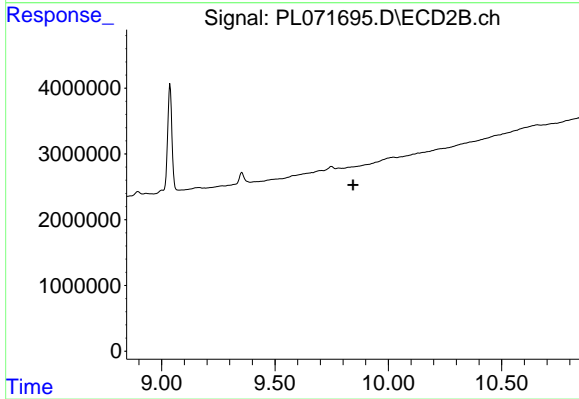
#18 Endrin aldehyde

R.T.: 9.267 min
 Delta R.T.: 0.004 min
 Response: 89751
 Conc: 0.08 ng/ml



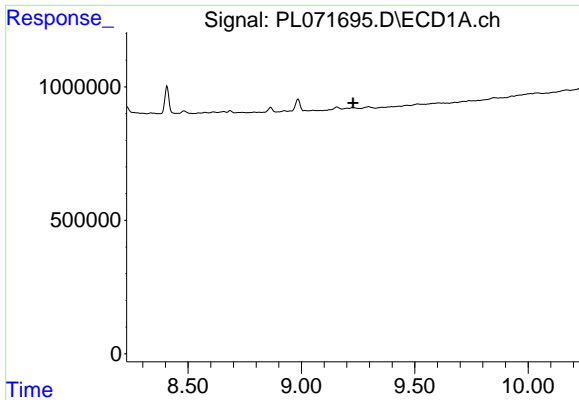
#20 Methoxychlor

R.T.: 8.985 min
 Delta R.T.: -0.018 min
 Response: 585155
 Conc: 1.57 ng/ml



#20 Methoxychlor

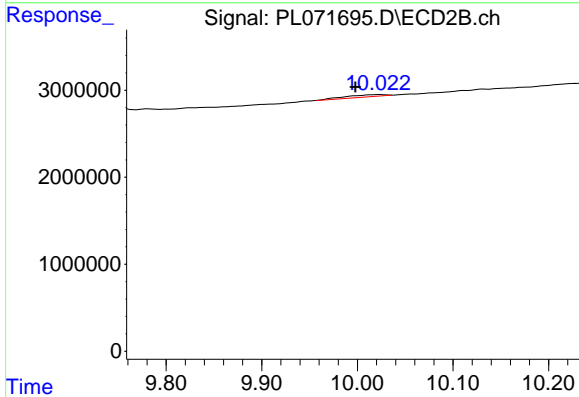
R.T.: 0.000 min
 Exp R.T.: 9.844 min
 Response: 0
 Conc: N.D.



#21 Endrin ketone

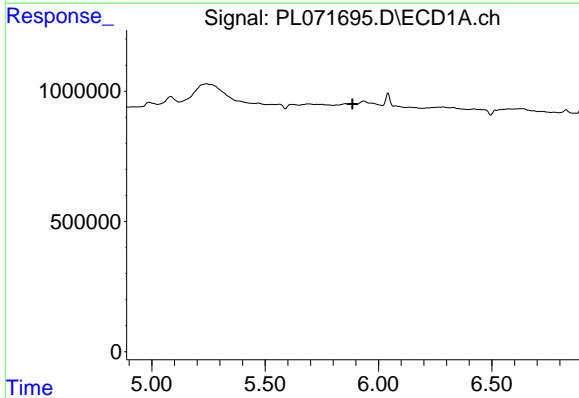
R.T.: 0.000 min
 Exp R.T. : 9.228 min
 Response: 0
 Conc: N.D.

Instrument :
 ECD_L
 ClientSampleId :
 COMPOSITE-SAMPLE-2-SHALLOWDL



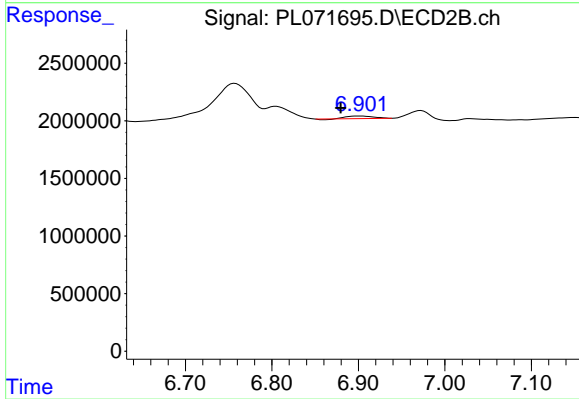
#21 Endrin ketone

R.T.: 10.024 min
 Delta R.T.: 0.026 min
 Response: 813814
 Conc: 0.60 ng/ml



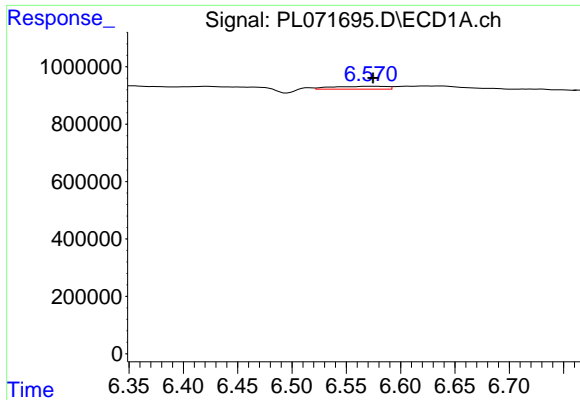
#23 Chlordane-1

R.T.: 0.000 min
 Exp R.T. : 5.886 min
 Response: 0
 Conc: N.D.



#23 Chlordane-1

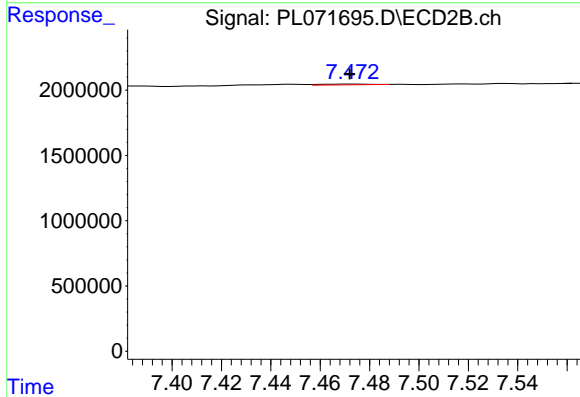
R.T.: 6.902 min
 Delta R.T.: 0.022 min
 Response: 442900
 Conc: 6.58 ng/ml



#24 Chlordane-2

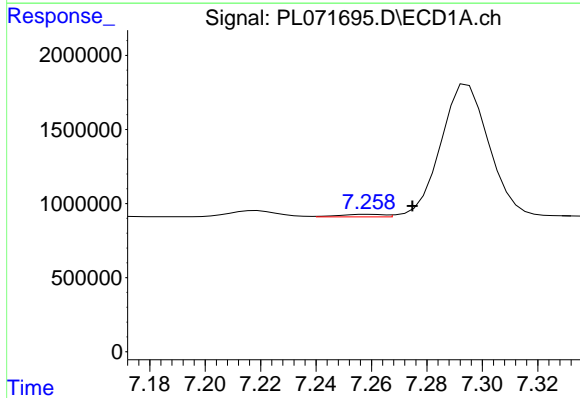
R.T.: 6.572 min
 Delta R.T.: -0.003 min
 Response: 350807
 Conc: 10.78 ng/ml

Instrument : ECD_L
 ClientSampleId : COMPOSITE-SAMPLE-2-SHALLOWDL



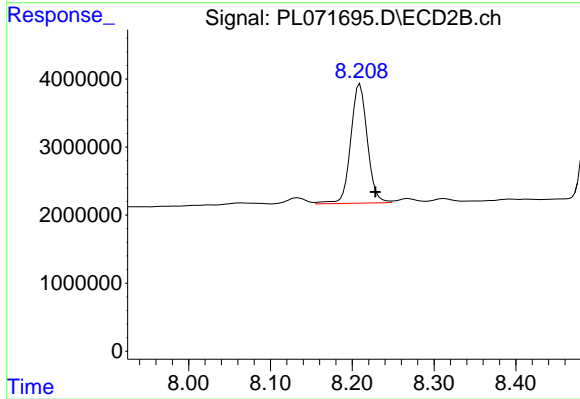
#24 Chlordane-2

R.T.: 7.474 min
 Delta R.T.: 0.002 min
 Response: 76800
 Conc: 1.04 ng/ml



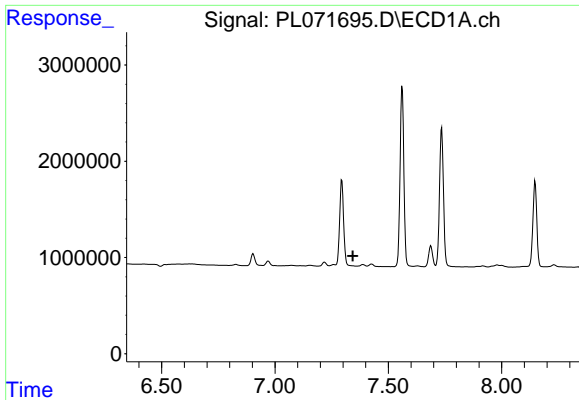
#25 Chlordane-3

R.T.: 7.260 min
 Delta R.T.: -0.015 min
 Response: 197699
 Conc: 2.29 ng/ml



#25 Chlordane-3

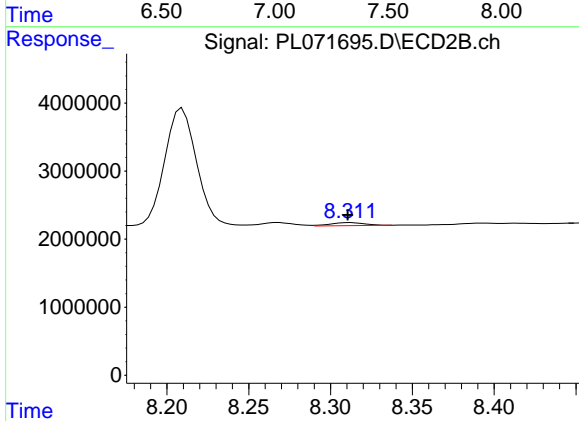
R.T.: 8.209 min
 Delta R.T.: -0.019 min
 Response: 24607765
 Conc: 89.05 ng/ml



#26 Chlordane-4

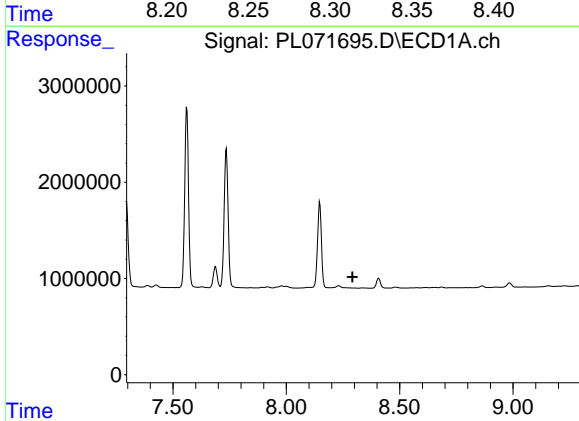
R.T.: 0.000 min
 Exp R.T.: 7.343 min
 Response: 0
 Conc: N.D.

Instrument :
 ECD_L
 ClientSampleId :
 COMPOSITE-SAMPLE-2-SHALLOWDL



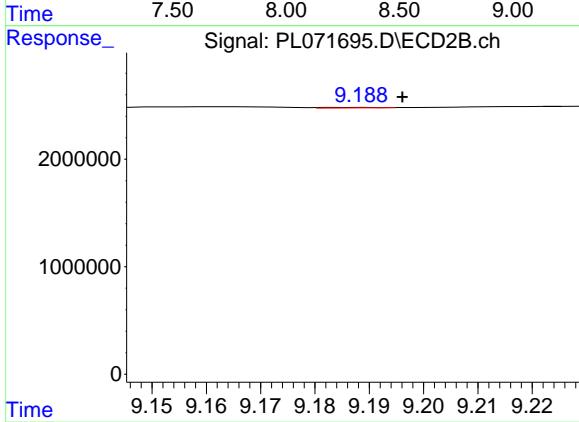
#26 Chlordane-4

R.T.: 8.312 min
 Delta R.T.: 0.001 min
 Response: 643619
 Conc: 1.98 ng/ml



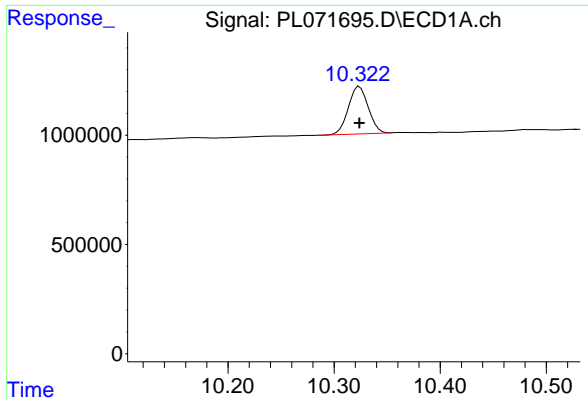
#27 Chlordane-5

R.T.: 0.000 min
 Exp R.T.: 8.292 min
 Response: 0
 Conc: N.D.



#27 Chlordane-5

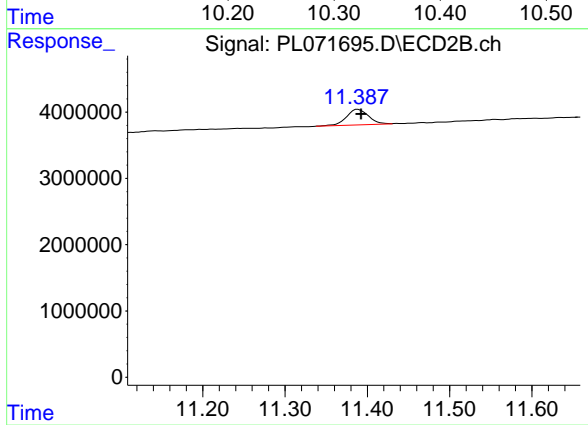
R.T.: 9.189 min
 Delta R.T.: -0.007 min
 Response: 34584
 Conc: 0.64 ng/ml



#28 Decachlorobiphenyl

R.T.: 10.324 min
 Delta R.T.: 0.000 min
 Response: 2817653
 Conc: 3.78 ng/ml

Instrument :
 ECD_L
 ClientSampleId :
 COMPOSITE-SAMPLE-2-SHALLOWDL



#28 Decachlorobiphenyl

R.T.: 11.388 min
 Delta R.T.: -0.004 min
 Response: 4419803
 Conc: 3.53 ng/ml