

Data Path : Z:\pestpcbsrv\HPCHEM1\ECD\_L\Data\PL122821\  
 Data File : PL071704.D  
 Signal(s) : Signal #1: ECD1A.ch Signal #2: ECD2B.ch  
 Acq On : 28 Dec 2021 14:56  
 Operator : AR\AJ  
 Sample : M5234-01  
 Misc :  
 ALS Vial : 13 Sample Multiplier: 1

Instrument :  
 ECD\_L  
 ClientSampleId :  
 P-1

Integration File signal 1: autoint1.e  
 Integration File signal 2: autoint2.e  
 Quant Time: Dec 29 00:24:33 2021  
 Quant Method : Z:\pestpcbsrv\HPCHEM1\ECD\_L\methods\PL122721.M  
 Quant Title : GC Extractables  
 QLast Update : Mon Dec 27 14:06:28 2021  
 Response via : Initial Calibration  
 Integrator: ChemStation

Volume Inj. : 1 µl  
 Signal #1 Phase : ZB-MR2 Signal #2 Phase: ZB-MR1  
 Signal #1 Info : 30M x 0.32mm x0.2 Signal #2 Info : 30M x 0.32mm x0.5µm

	Compound	RT#1	RT#2	Resp#1	Resp#2	ng/ml	ng/ml
-----							
System Monitoring Compounds							
1)	SA Tetrachlo...	4.560	5.497	11253928	28564545	17.346	16.739
28)	SA Decachlor...	10.321	11.390	14839565	23790986	19.933	18.983
Target Compounds							
4)	MA Heptachlor	6.073f	7.152f	543689	502841	0.566	0.218 #
5)	MB Aldrin	0.000	7.468f	0	36605	N.D.	0.017 #
6)	B beta-BHC	6.073	0.000	543689	0	1.431	N.D. #
9)	A Endosulfan I	0.000	8.366	0	62574	N.D.	0.037 #
10)	B gamma-Chl...	0.000	8.233	0	231959	N.D.	0.119 #
11)	B alpha-Chl...	0.000	8.305	0	66424	N.D.	0.036 #
12)	B 4,4'-DDE	0.000	8.481f	0	134134	N.D.	0.076 #
15)	B Endosulfa...	8.263f	9.152f	186260	286624	0.259	0.193 #
18)	B Endrin al...	0.000	9.276	0	80232	N.D.	0.069 #
19)	B Endosulfa...	0.000	9.518f	0	225372	N.D.	0.160 #
24)	Chlordane-2	0.000	7.468	0	36605	N.D.	0.497 #
25)	Chlordane-3	0.000	8.233	0	231959	N.D.	0.839 #
26)	Chlordane-4	0.000	8.305	0	66424	N.D.	0.205 #
27)	Chlordane-5	8.263f	0.000	186260	0	6.142	N.D. #
-----							

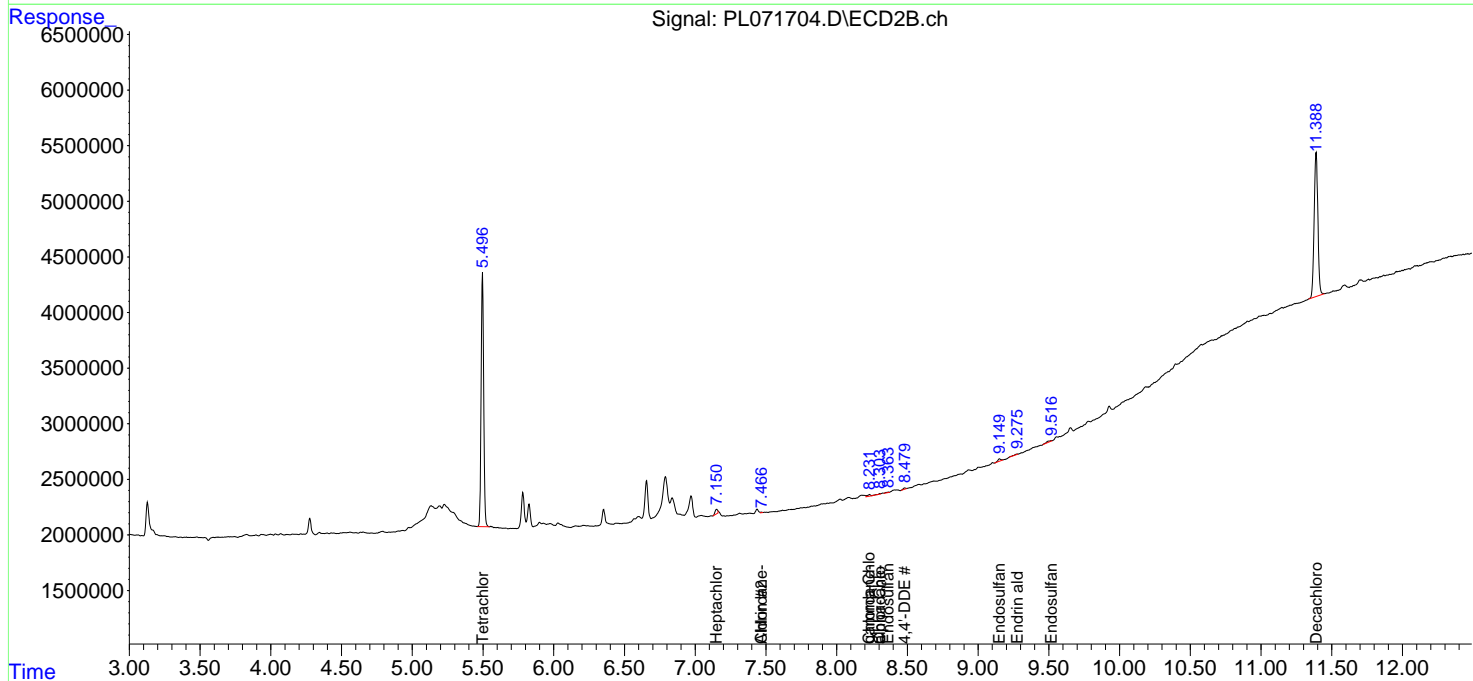
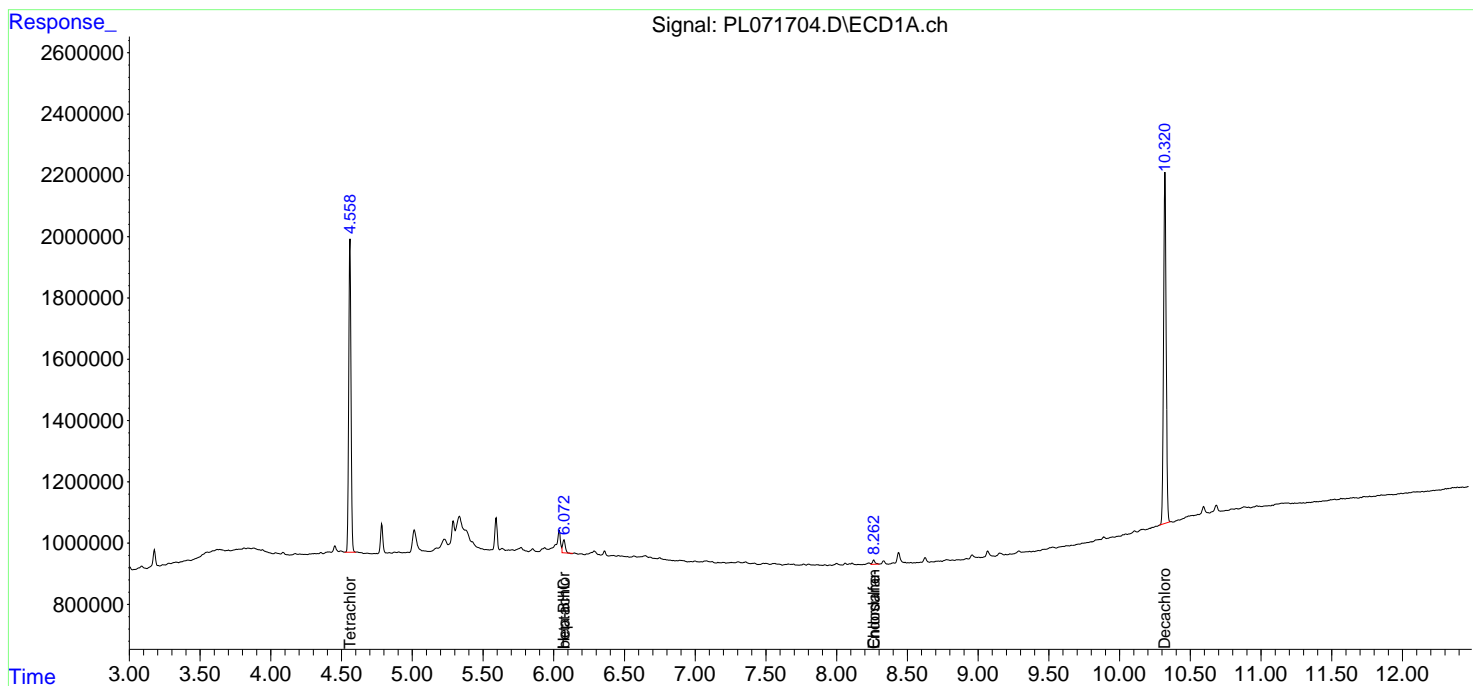
(f)=RT Delta > 1/2 Window (#)=Amounts differ by > 25% (m)=manual int.

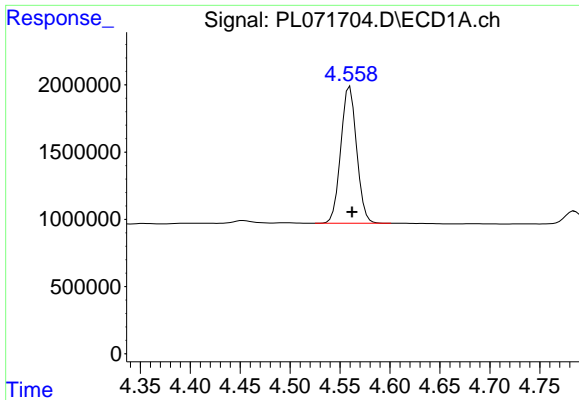
Data Path : Z:\pestpcbsrv\HPCHEM1\ECD\_L\Data\PL122821\  
 Data File : PL071704.D  
 Signal(s) : Signal #1: ECD1A.ch Signal #2: ECD2B.ch  
 Acq On : 28 Dec 2021 14:56  
 Operator : AR\AJ  
 Sample : M5234-01  
 Misc :  
 ALS Vial : 13 Sample Multiplier: 1

Instrument :  
 ECD\_L  
 ClientSampleId :  
 P-1

Integration File signal 1: autoint1.e  
 Integration File signal 2: autoint2.e  
 Quant Time: Dec 29 00:24:33 2021  
 Quant Method : Z:\pestpcbsrv\HPCHEM1\ECD\_L\methods\PL122721.M  
 Quant Title : GC Extractables  
 QLast Update : Mon Dec 27 14:06:28 2021  
 Response via : Initial Calibration  
 Integrator: ChemStation

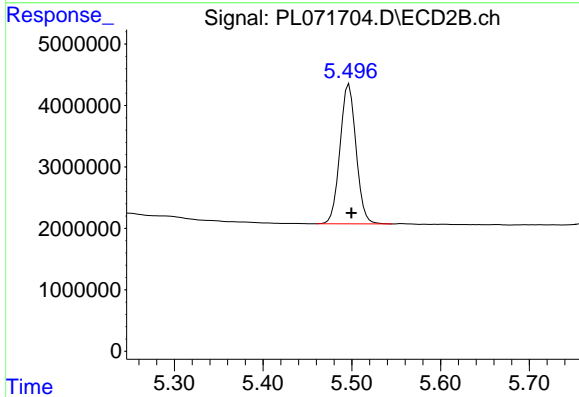
Volume Inj. : 1 µl  
 Signal #1 Phase : ZB-MR2 Signal #2 Phase: ZB-MR1  
 Signal #1 Info : 30M x 0.32mm x0.2 Signal #2 Info : 30M x 0.32mm x0.5µm



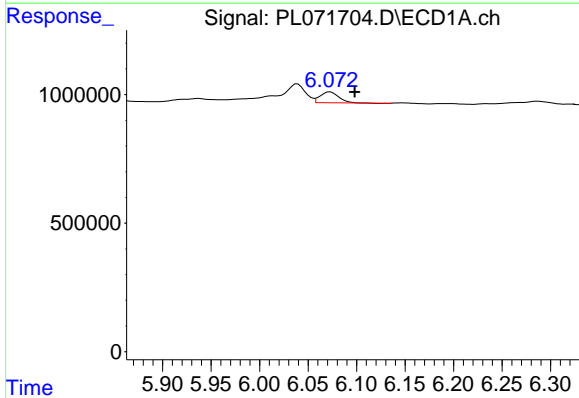


#1 Tetrachloro-m-xylene  
 R.T.: 4.560 min  
 Delta R.T.: -0.002 min  
 Response: 11253928  
 Conc: 17.35 ng/ml

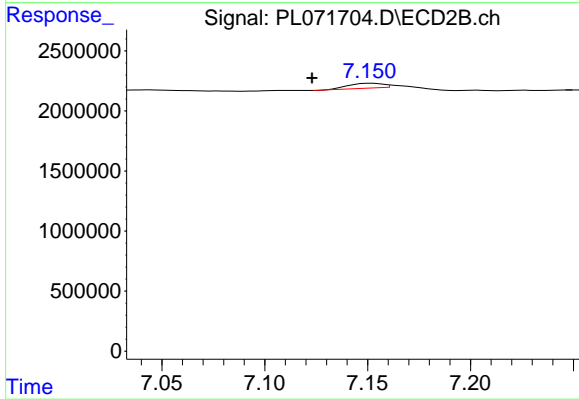
Instrument :  
 ECD\_L  
 ClientSampleId :  
 P-1



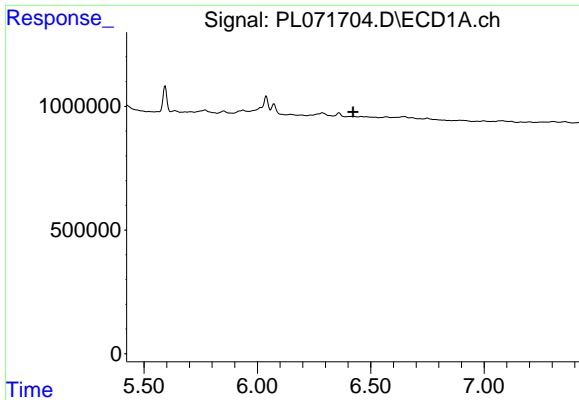
#1 Tetrachloro-m-xylene  
 R.T.: 5.497 min  
 Delta R.T.: -0.002 min  
 Response: 28564545  
 Conc: 16.74 ng/ml



#4 Heptachlor  
 R.T.: 6.073 min  
 Delta R.T.: -0.025 min  
 Response: 543689  
 Conc: 0.57 ng/ml

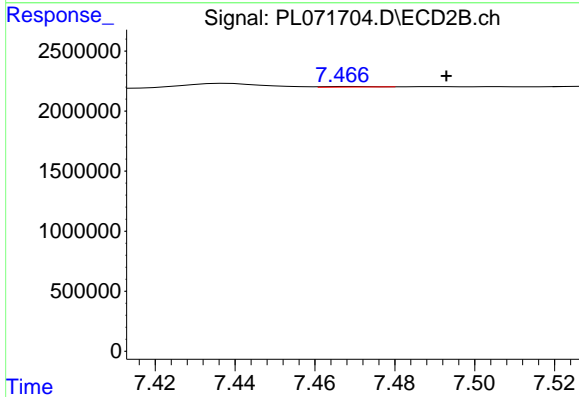


#4 Heptachlor  
 R.T.: 7.152 min  
 Delta R.T.: 0.029 min  
 Response: 502841  
 Conc: 0.22 ng/ml

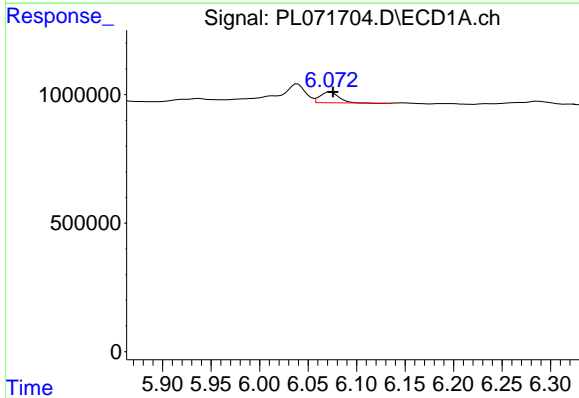


#5 Aldrin  
 R.T.: 0.000 min  
 Exp R.T.: 6.422 min  
 Response: 0  
 Conc: N.D.

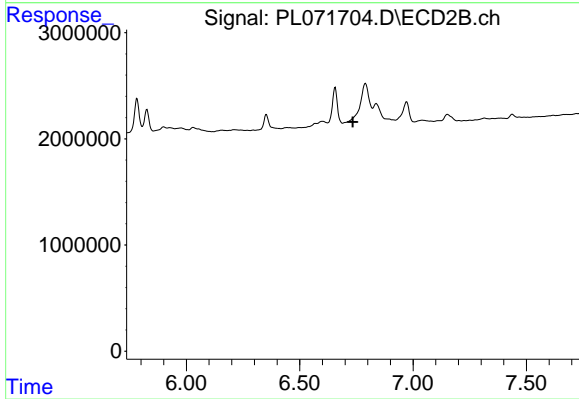
Instrument :  
 ECD\_L  
 ClientSampleId :  
 P-1



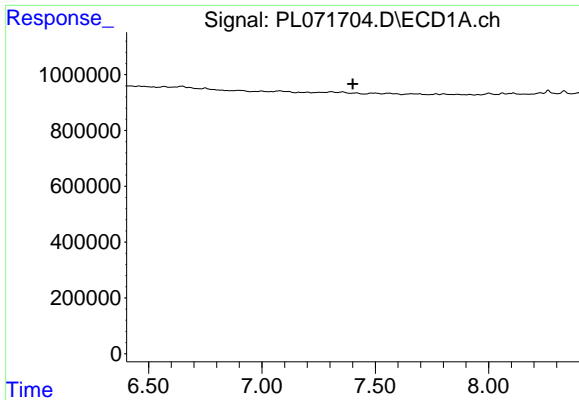
#5 Aldrin  
 R.T.: 7.468 min  
 Delta R.T.: -0.025 min  
 Response: 36605  
 Conc: 0.02 ng/ml



#6 beta-BHC  
 R.T.: 6.073 min  
 Delta R.T.: -0.003 min  
 Response: 543689  
 Conc: 1.43 ng/ml



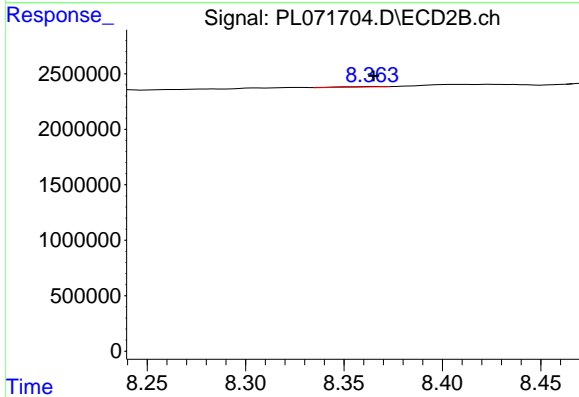
#6 beta-BHC  
 R.T.: 0.000 min  
 Exp R.T.: 6.735 min  
 Response: 0  
 Conc: N.D.



#9 Endosulfan I

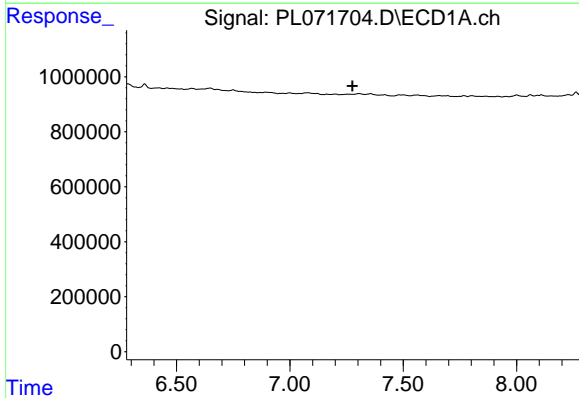
R.T.: 0.000 min  
 Exp R.T.: 7.401 min  
 Response: 0  
 Conc: N.D.

Instrument :  
 ECD\_L  
 ClientSampleId :  
 P-1



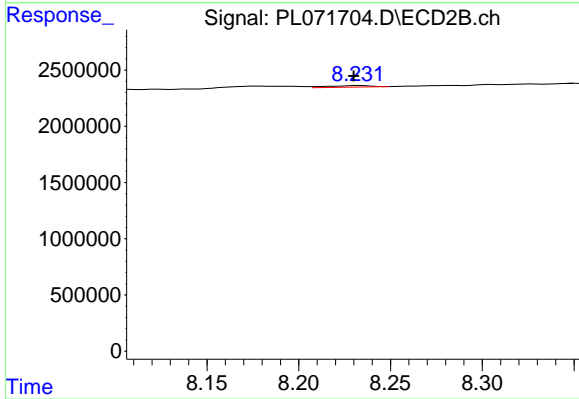
#9 Endosulfan I

R.T.: 8.366 min  
 Delta R.T.: 0.000 min  
 Response: 62574  
 Conc: 0.04 ng/ml



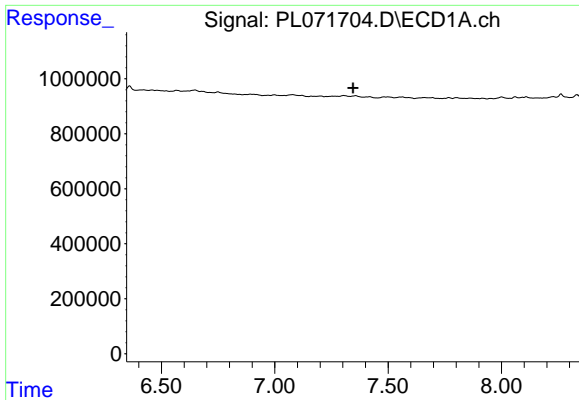
#10 gamma-Chlordane

R.T.: 0.000 min  
 Exp R.T.: 7.277 min  
 Response: 0  
 Conc: N.D.



#10 gamma-Chlordane

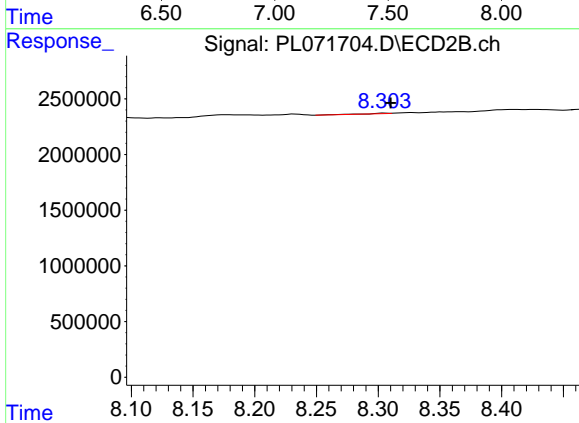
R.T.: 8.233 min  
 Delta R.T.: 0.003 min  
 Response: 231959  
 Conc: 0.12 ng/ml



#11 alpha-Chlordane

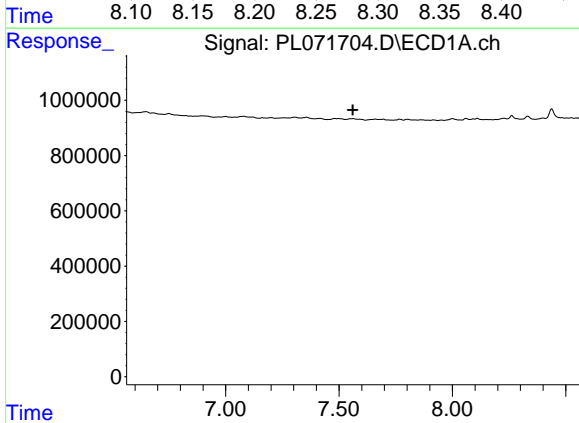
R.T.: 0.000 min  
 Exp R.T.: 7.346 min  
 Response: 0  
 Conc: N.D.

Instrument :  
 ECD\_L  
 ClientSampleId :  
 P-1



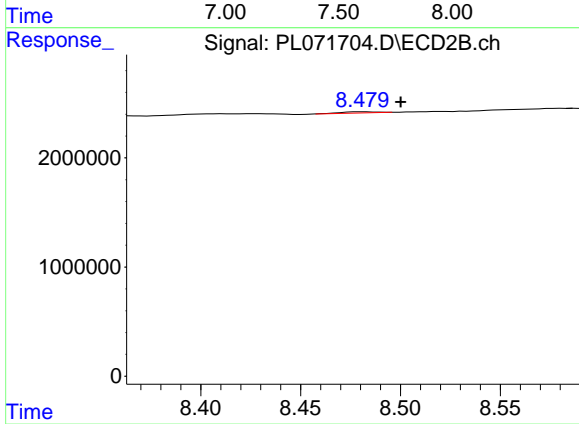
#11 alpha-Chlordane

R.T.: 8.305 min  
 Delta R.T.: -0.005 min  
 Response: 66424  
 Conc: 0.04 ng/ml



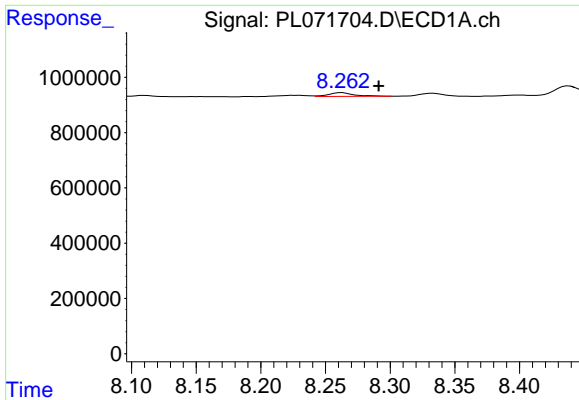
#12 4,4'-DDE

R.T.: 0.000 min  
 Exp R.T.: 7.561 min  
 Response: 0  
 Conc: N.D.



#12 4,4'-DDE

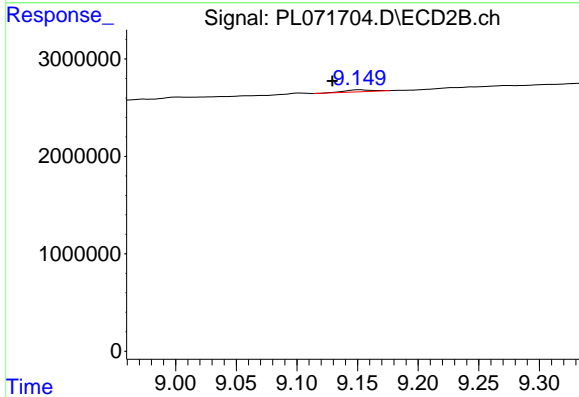
R.T.: 8.481 min  
 Delta R.T.: -0.019 min  
 Response: 134134  
 Conc: 0.08 ng/ml



#15 Endosulfan II

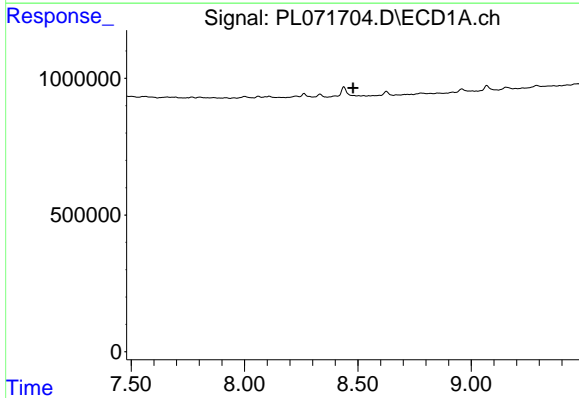
R.T.: 8.263 min  
 Delta R.T.: -0.028 min  
 Response: 186260  
 Conc: 0.26 ng/ml

Instrument :  
 ECD\_L  
 ClientSampleId :  
 P-1



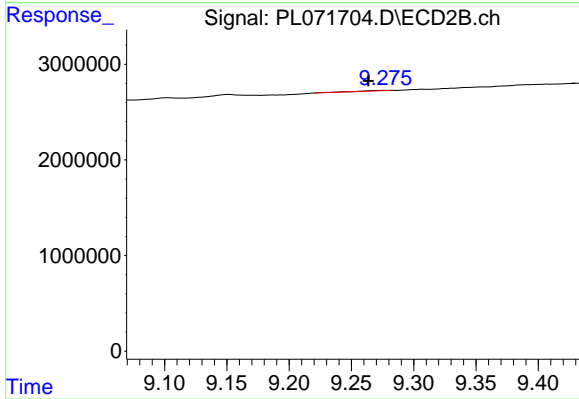
#15 Endosulfan II

R.T.: 9.152 min  
 Delta R.T.: 0.023 min  
 Response: 286624  
 Conc: 0.19 ng/ml



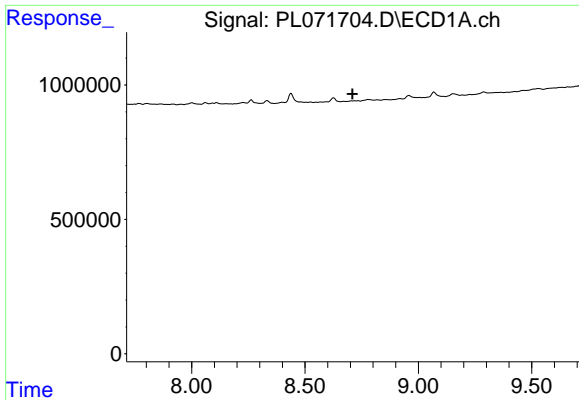
#18 Endrin aldehyde

R.T.: 0.000 min  
 Exp R.T. : 8.479 min  
 Response: 0  
 Conc: N.D.



#18 Endrin aldehyde

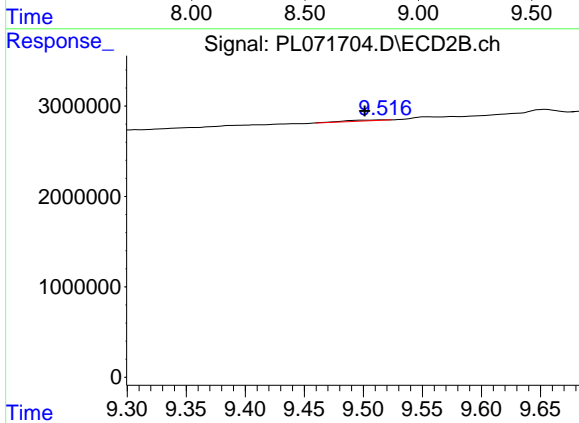
R.T.: 9.276 min  
 Delta R.T.: 0.012 min  
 Response: 80232  
 Conc: 0.07 ng/ml



#19 Endosulfan Sulfate

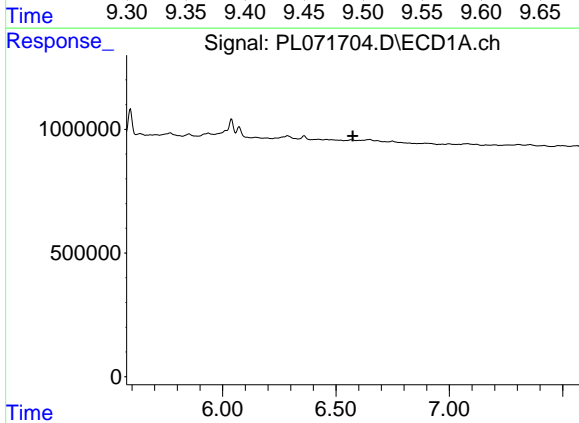
R.T.: 0.000 min  
 Exp R.T. : 8.710 min  
 Response: 0  
 Conc: N.D.

Instrument :  
 ECD\_L  
 ClientSampleId :  
 P-1



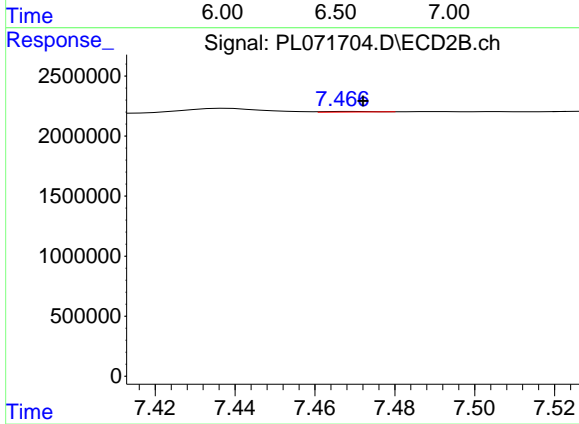
#19 Endosulfan Sulfate

R.T.: 9.518 min  
 Delta R.T.: 0.017 min  
 Response: 225372  
 Conc: 0.16 ng/ml



#24 Chlordane-2

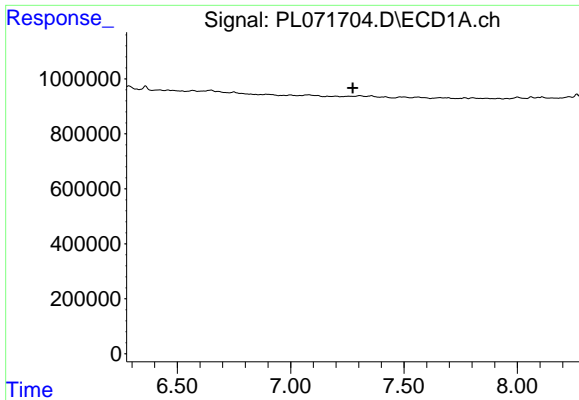
R.T.: 0.000 min  
 Exp R.T. : 6.575 min  
 Response: 0  
 Conc: N.D.



#24 Chlordane-2

R.T.: 7.468 min  
 Delta R.T.: -0.004 min  
 Response: 36605  
 Conc: 0.50 ng/ml

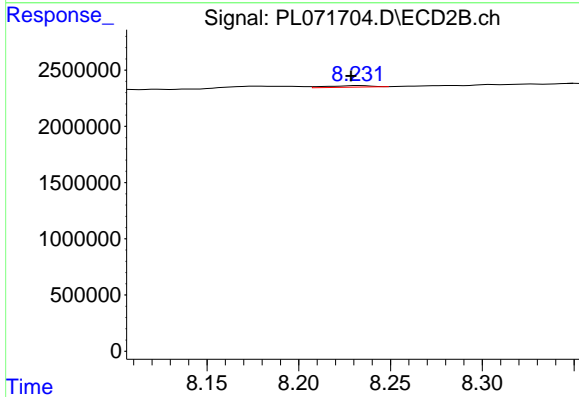




#25 Chlordane-3

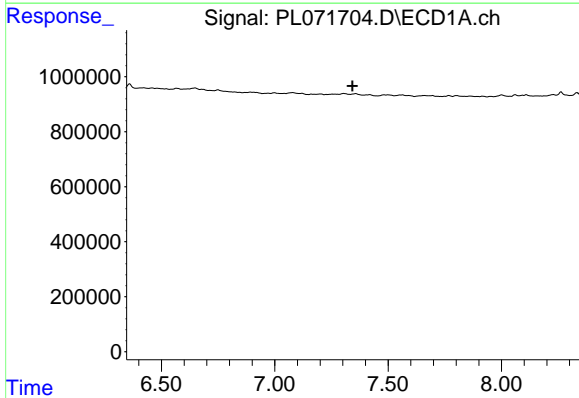
R.T.: 0.000 min  
 Exp R.T.: 7.275 min  
 Response: 0  
 Conc: N.D.

Instrument :  
 ECD\_L  
 ClientSampleId :  
 P-1



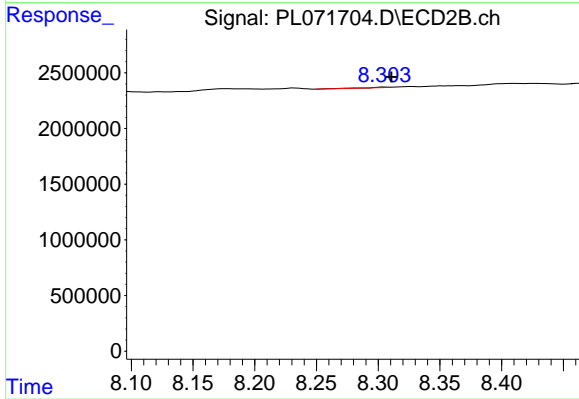
#25 Chlordane-3

R.T.: 8.233 min  
 Delta R.T.: 0.004 min  
 Response: 231959  
 Conc: 0.84 ng/ml



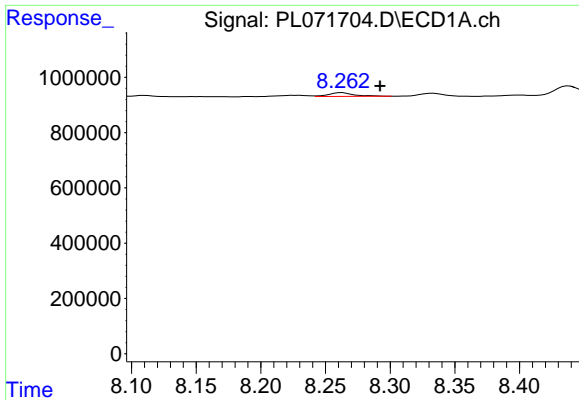
#26 Chlordane-4

R.T.: 0.000 min  
 Exp R.T.: 7.343 min  
 Response: 0  
 Conc: N.D.



#26 Chlordane-4

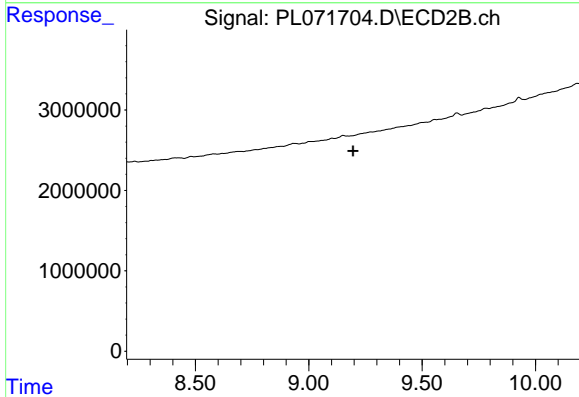
R.T.: 8.305 min  
 Delta R.T.: -0.005 min  
 Response: 66424  
 Conc: 0.20 ng/ml



#27 Chlordane-5

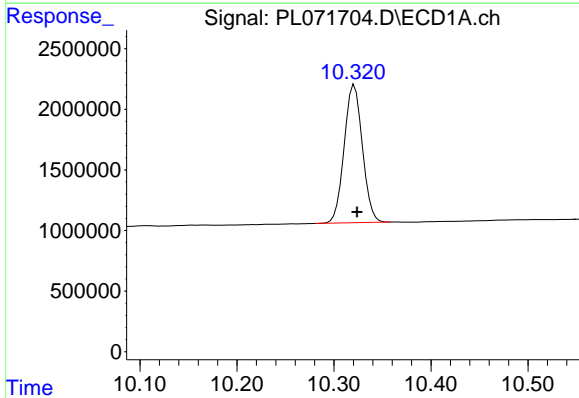
R.T.: 8.263 min  
 Delta R.T.: -0.029 min  
 Response: 186260  
 Conc: 6.14 ng/ml

Instrument :  
 ECD\_L  
 ClientSampleId :  
 P-1



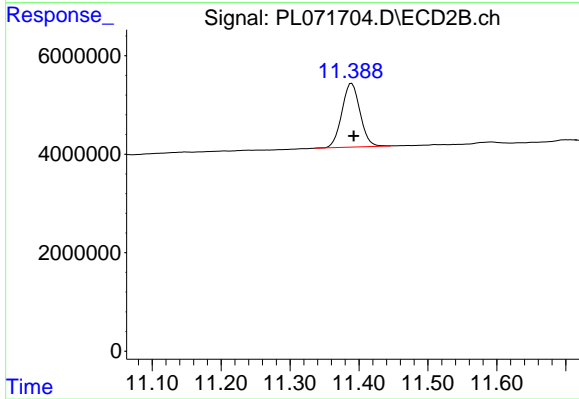
#27 Chlordane-5

R.T.: 0.000 min  
 Exp R.T. : 9.196 min  
 Response: 0  
 Conc: N.D.



#28 Decachlorobiphenyl

R.T.: 10.321 min  
 Delta R.T.: -0.003 min  
 Response: 14839565  
 Conc: 19.93 ng/ml



#28 Decachlorobiphenyl

R.T.: 11.390 min  
 Delta R.T.: -0.003 min  
 Response: 23790986  
 Conc: 18.98 ng/ml