

Data Path : Z:\pestpcbsrv\HPCHEM1\ECD_L\Data\PL122823\
 Data File : PL087532.D
 Signal(s) : Signal #1: ECD1A.ch Signal #2: ECD2B.ch
 Acq On : 28 Dec 2023 17:59
 Operator : AR\AJ
 Sample : I.BLK
 Misc :
 ALS Vial : 2 Sample Multiplier: 1

Instrument :
 ECD_L
 ClientSampleId :
 I.BLK

Integration File signal 1: autoint1.e
 Integration File signal 2: autoint2.e
 Quant Time: Dec 29 01:37:59 2023
 Quant Method : Z:\pestpcbsrv\HPCHEM1\ECD_L\methods\PL122823.M
 Quant Title : GC Extractables
 QLast Update : Fri Dec 29 01:09:21 2023
 Response via : Initial Calibration
 Integrator: ChemStation

Volume Inj. : 1 µl
 Signal #1 Phase : ZB-MR2 Signal #2 Phase: ZB-MR1
 Signal #1 Info : 30M x 0.32mm x0.2 Signal #2 Info : 30M x 0.32mm x0.5µm

Compound	RT#1	RT#2	Resp#1	Resp#2	ng/ml	ng/ml

System Monitoring Compounds						
1) SA Tetrachlo...	3.421	2.674	50742494	20453473	16.949	16.885
28) SA Decachlor...	8.984	7.865	52424138	23015276	18.407	18.168

Target Compounds

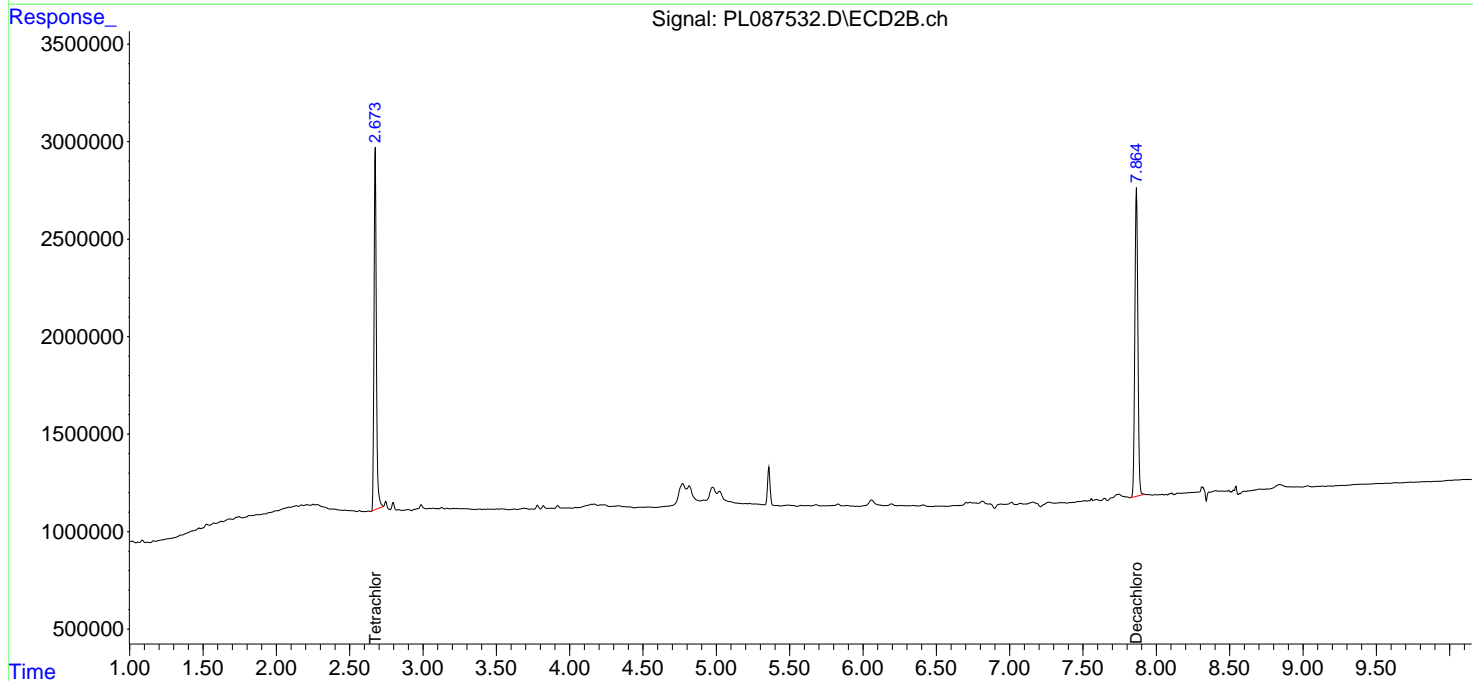
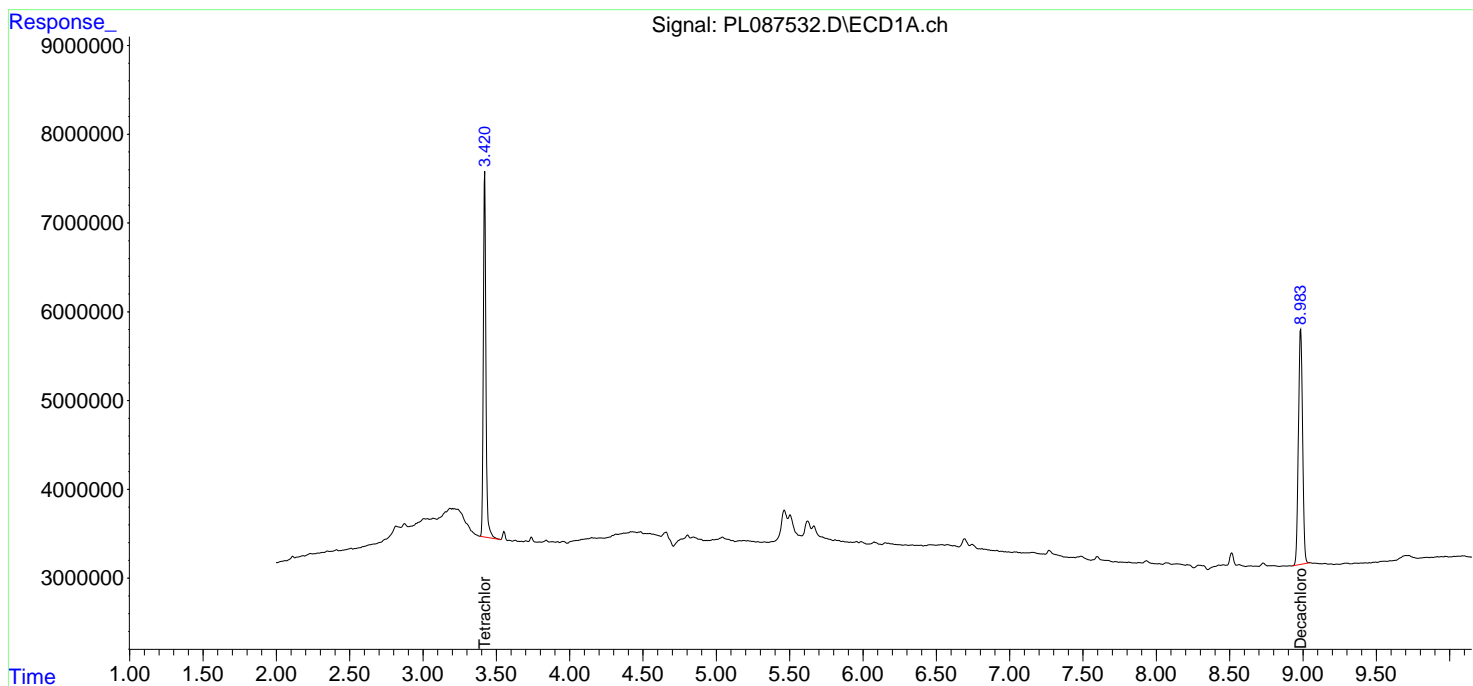
 (f)=RT Delta > 1/2 Window (#)=Amounts differ by > 25% (m)=manual int.

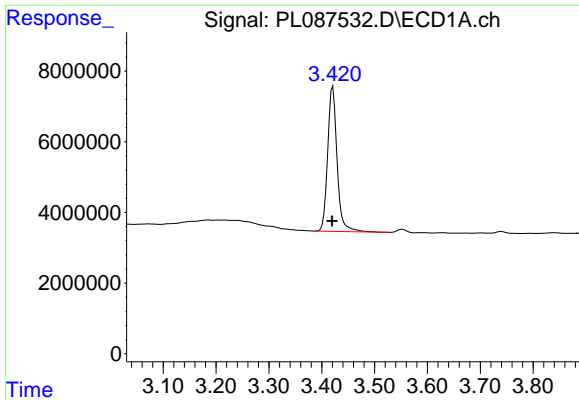
Data Path : Z:\pestpcbsrv\HPCHEM1\ECD_L\Data\PL122823\
 Data File : PL087532.D
 Signal(s) : Signal #1: ECD1A.ch Signal #2: ECD2B.ch
 Acq On : 28 Dec 2023 17:59
 Operator : AR\AJ
 Sample : I.BLK
 Misc :
 ALS Vial : 2 Sample Multiplier: 1

Instrument :
 ECD_L
 ClientSampleId :
 I.BLK

Integration File signal 1: autoint1.e
 Integration File signal 2: autoint2.e
 Quant Time: Dec 29 01:37:59 2023
 Quant Method : Z:\pestpcbsrv\HPCHEM1\ECD_L\methods\PL122823.M
 Quant Title : GC Extractables
 QLast Update : Fri Dec 29 01:09:21 2023
 Response via : Initial Calibration
 Integrator: ChemStation

Volume Inj. : 1 µl
 Signal #1 Phase : ZB-MR2 Signal #2 Phase: ZB-MR1
 Signal #1 Info : 30M x 0.32mm x0.2 Signal #2 Info : 30M x 0.32mm x0.5µm

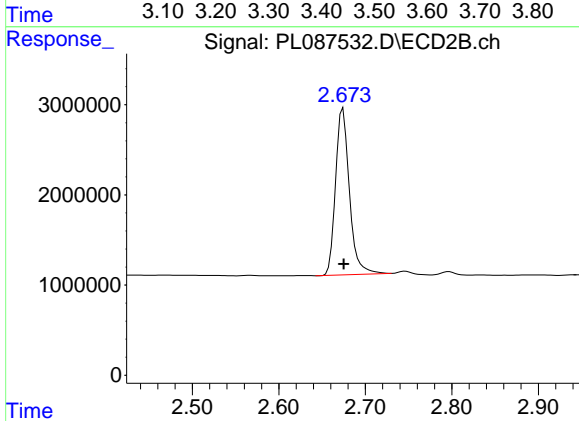




#1 Tetrachloro-m-xylene

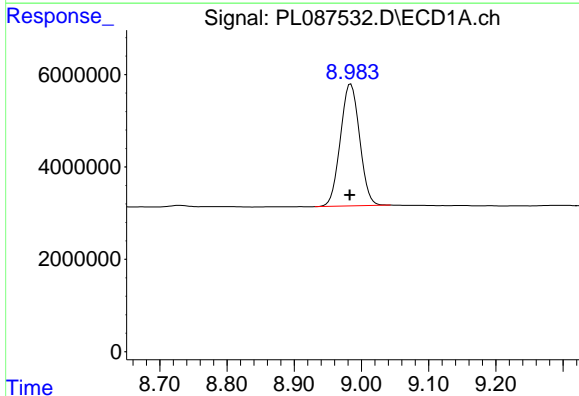
R.T.: 3.421 min
 Delta R.T.: 0.000 min
 Response: 50742494
 Conc: 16.95 ng/ml

Instrument :
 ECD_L
 ClientSampleId :
 I.BLK



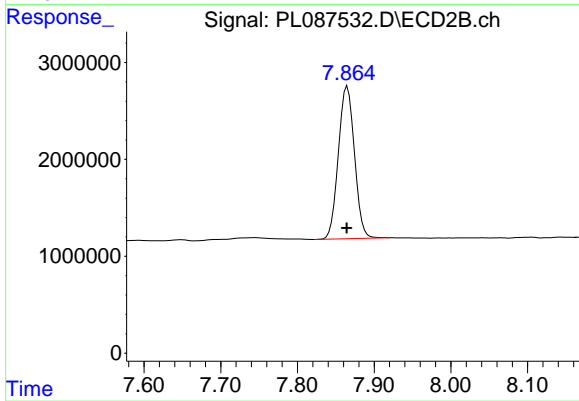
#1 Tetrachloro-m-xylene

R.T.: 2.674 min
 Delta R.T.: 0.000 min
 Response: 20453473
 Conc: 16.88 ng/ml



#28 Decachlorobiphenyl

R.T.: 8.984 min
 Delta R.T.: 0.002 min
 Response: 52424138
 Conc: 18.41 ng/ml



#28 Decachlorobiphenyl

R.T.: 7.865 min
 Delta R.T.: 0.000 min
 Response: 23015276
 Conc: 18.17 ng/ml