

Data Path : Z:\pestpcbsrv\HPCHEM1\ECD_L\Data\PL122823\
 Data File : PL087560.D
 Signal(s) : Signal #1: ECD1A.ch Signal #2: ECD2B.ch
 Acq On : 29 Dec 2023 00:44
 Operator : AR\AJ
 Sample : 06015-02MSD
 Misc :
 ALS Vial : 27 Sample Multiplier: 1

Instrument :
 ECD_L
 ClientSampleId :
 MR-317-0-2MSD

Integration File signal 1: autoint1.e
 Integration File signal 2: autoint2.e
 Quant Time: Dec 29 03:26:47 2023
 Quant Method : Z:\pestpcbsrv\HPCHEM1\ECD_L\methods\PL122823.M
 Quant Title : GC Extractables
 QLast Update : Fri Dec 29 03:17:47 2023
 Response via : Initial Calibration
 Integrator: ChemStation

Volume Inj. : 1 µl
 Signal #1 Phase : ZB-MR2 Signal #2 Phase: ZB-MR1
 Signal #1 Info : 30M x 0.32mm x0.2 Signal #2 Info : 30M x 0.32mm x0.5µm

	Compound	RT#1	RT#2	Resp#1	Resp#2	ng/ml	ng/ml

System Monitoring Compounds							
1)	SA Tetrachlo...	3.421	2.676	44026603	17955053	14.706	14.822
28)	SA Decachlor...	8.982	7.865	47713421	21325923	16.753	16.834
Target Compounds							
2)	A alpha-BHC	3.877	3.180	206.3E6	85832433	45.985	46.570
3)	MA gamma-BHC...	4.211	3.510	194.2E6	81139664	44.531	44.649
4)	MA Heptachlor	4.804	3.852	201.7E6	80685722	45.912	45.304
5)	MB Aldrin	5.147	4.132	182.3E6	75586329	42.538	42.828
6)	B beta-BHC	4.411	3.811	83340840	32829390	44.795	42.923
7)	B delta-BHC	4.657	4.040	191.9E6	78786394	45.610	45.386
8)	B Heptachlo...	5.578	4.640	175.5E6	73908327	45.819	46.373
9)	A Endosulfan I	5.964	5.011	164.3E6	69640353	45.562	45.018
10)	B gamma-Chl...	5.835	4.893	175.8E6	73587774	45.480	45.591
11)	B alpha-Chl...	5.916	4.958	173.8E6	74008457	45.241	44.594
12)	B 4,4'-DDE	6.097	5.156	144.4E6	61420562	45.156	45.662
13)	MA Dieldrin	6.243	5.278	168.1E6	71843734	45.135	45.209
14)	MA Endrin	6.473	5.554	144.6E6	66376870	46.041	46.811
15)	B Endosulfa...	6.694	5.852	136.9E6	60234667	42.689	44.000
16)	A 4,4'-DDD	6.618	5.714	119.6E6	53291969	46.394	47.263
17)	MA 4,4'-DDT	6.935	5.967	133.6E6	57995475	46.738	46.598
18)	B Endrin al...	6.825	6.034	107.9E6	49012097	42.880	42.171
19)	B Endosulfa...	7.062	6.259	141.3E6	61783244	46.194	47.066
20)	A Methoxychlor	7.421	6.553	72074614	33364920	44.392	45.328
21)	B Endrin ke...	7.548	6.765	147.3E6	70427012	45.299	45.939
22)	Mirex	8.026	6.947	115.4E6	54768305	41.154	40.830

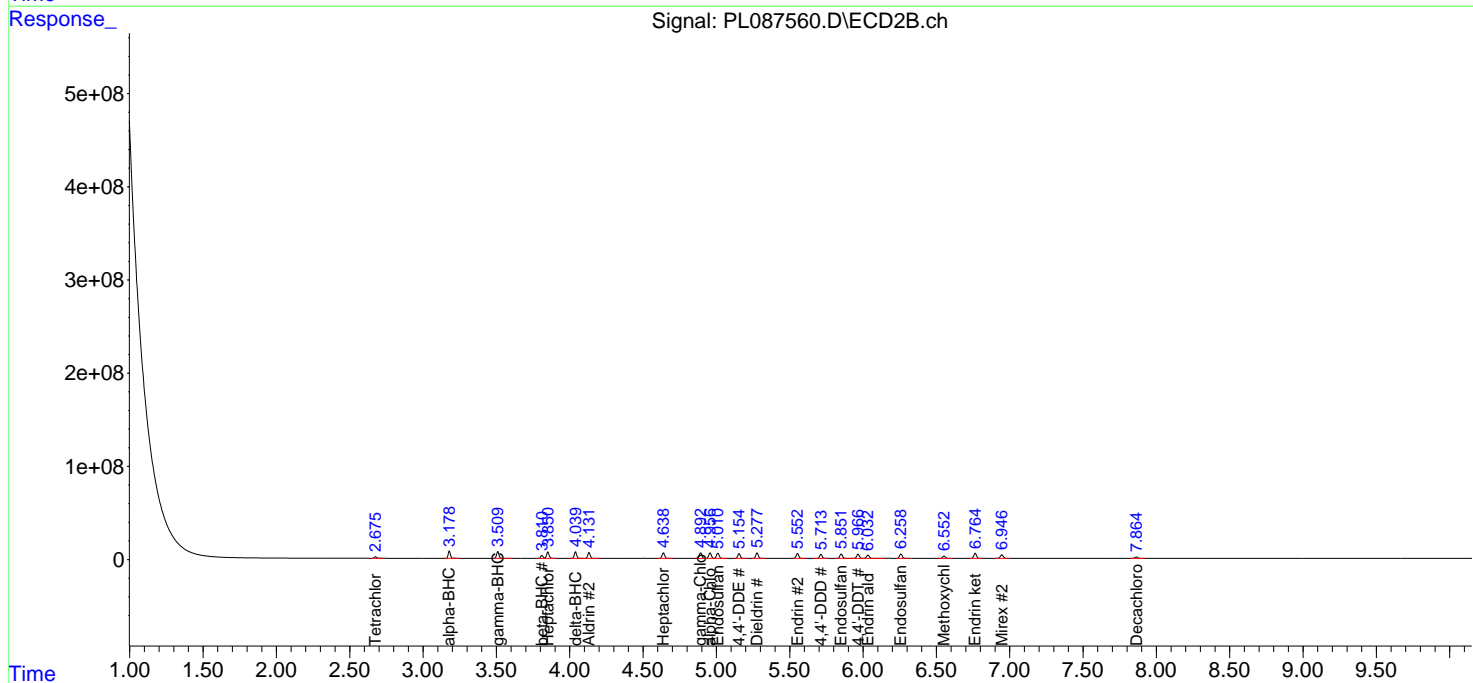
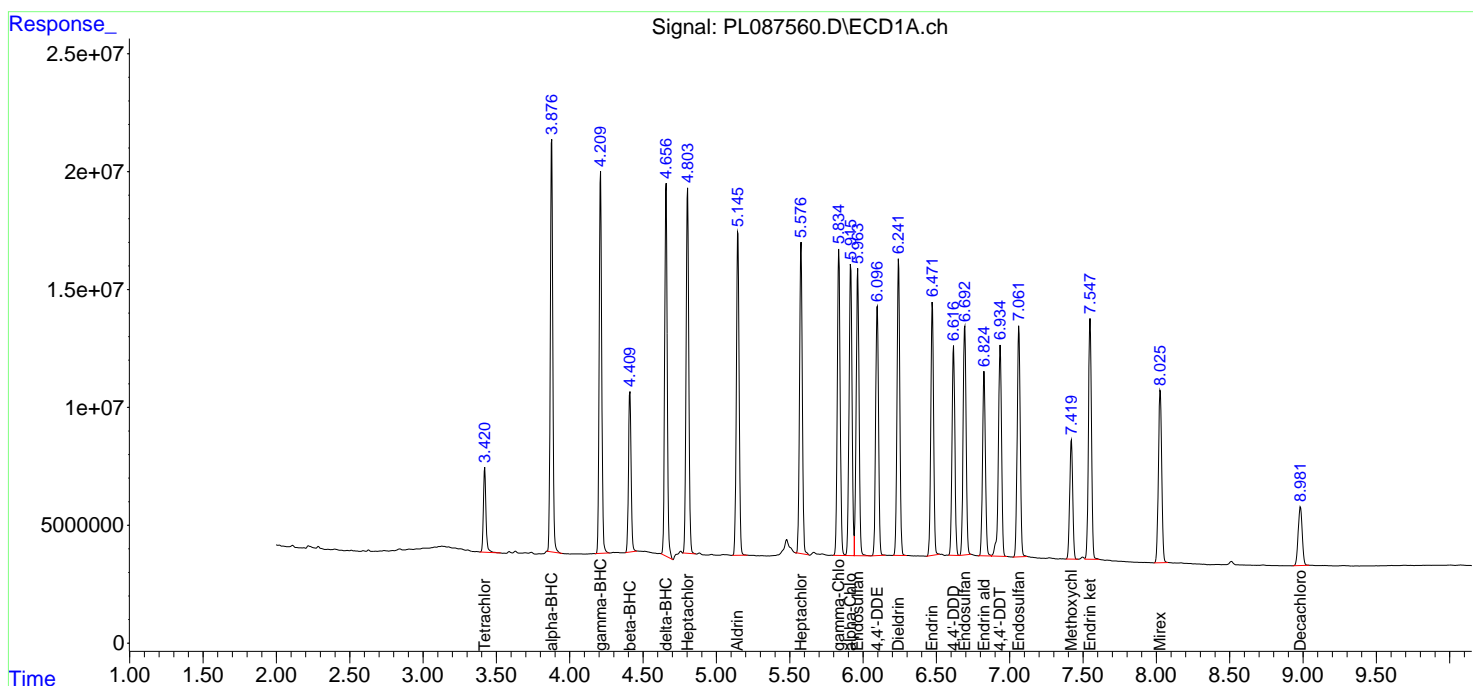
(f)=RT Delta > 1/2 Window (#)=Amounts differ by > 25% (m)=manual int.

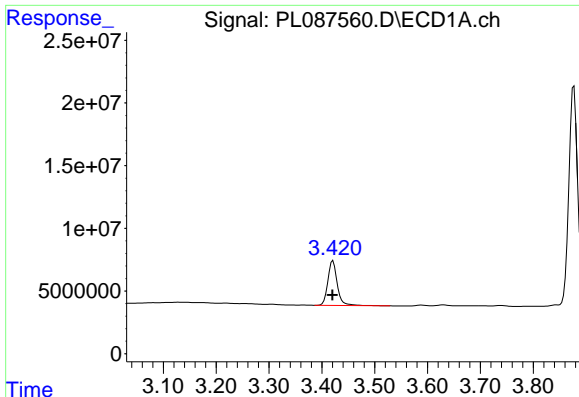
Data Path : Z:\pestpcbsrv\HPCHEM1\ECD_L\Data\PL122823\
 Data File : PL087560.D
 Signal(s) : Signal #1: ECD1A.ch Signal #2: ECD2B.ch
 Acq On : 29 Dec 2023 00:44
 Operator : AR\AJ
 Sample : 06015-02MSD
 Misc :
 ALS Vial : 27 Sample Multiplier: 1

Instrument :
 ECD_L
 ClientSampleId :
 MR-317-0-2MSD

Integration File signal 1: autoint1.e
 Integration File signal 2: autoint2.e
 Quant Time: Dec 29 03:26:47 2023
 Quant Method : Z:\pestpcbsrv\HPCHEM1\ECD_L\methods\PL122823.M
 Quant Title : GC Extractables
 QLast Update : Fri Dec 29 03:17:47 2023
 Response via : Initial Calibration
 Integrator: ChemStation

Volume Inj. : 1 µl
 Signal #1 Phase : ZB-MR2 Signal #2 Phase: ZB-MR1
 Signal #1 Info : 30M x 0.32mm x0.2 Signal #2 Info : 30M x 0.32mm x0.5µm

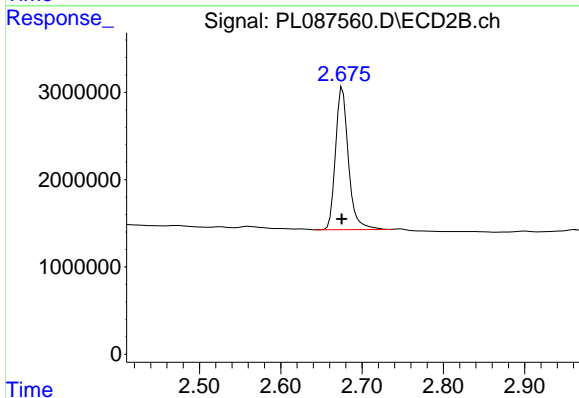




#1 Tetrachloro-m-xylene

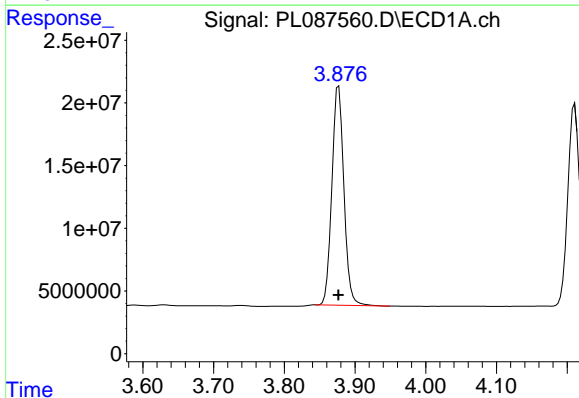
R.T.: 3.421 min
 Delta R.T.: 0.000 min
 Response: 44026603
 Conc: 14.71 ng/ml

Instrument :
 ECD_L
 ClientSampleId :
 MR-317-0-2MSD



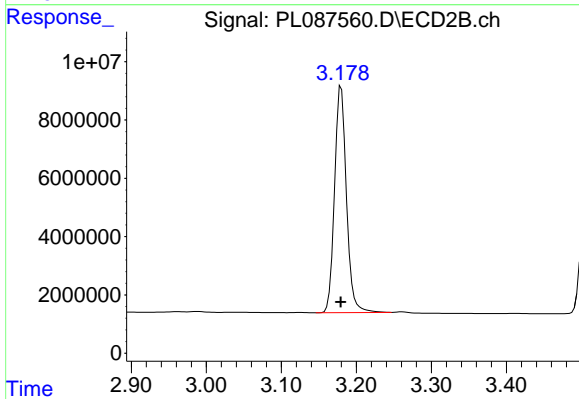
#1 Tetrachloro-m-xylene

R.T.: 2.676 min
 Delta R.T.: 0.000 min
 Response: 17955053
 Conc: 14.82 ng/ml



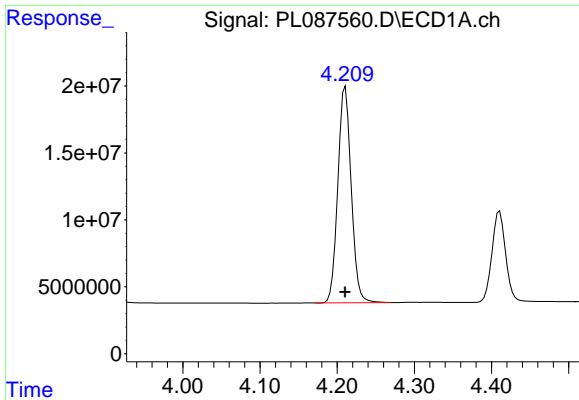
#2 alpha-BHC

R.T.: 3.877 min
 Delta R.T.: 0.000 min
 Response: 206328851
 Conc: 45.98 ng/ml



#2 alpha-BHC

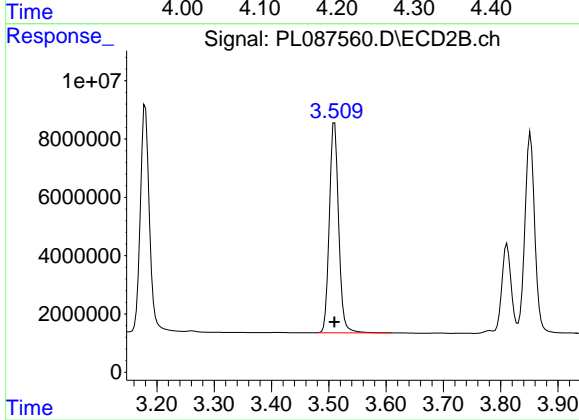
R.T.: 3.180 min
 Delta R.T.: 0.000 min
 Response: 85832433
 Conc: 46.57 ng/ml



#3 gamma-BHC (Lindane)

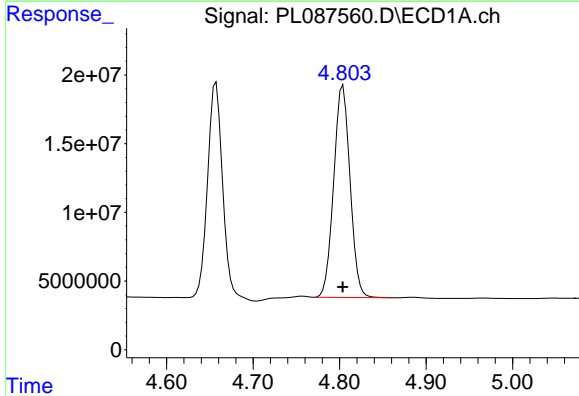
R.T.: 4.211 min
 Delta R.T.: 0.000 min
 Response: 194226809
 Conc: 44.53 ng/ml

Instrument :
 ECD_L
 ClientSampleId :
 MR-317-0-2MSD



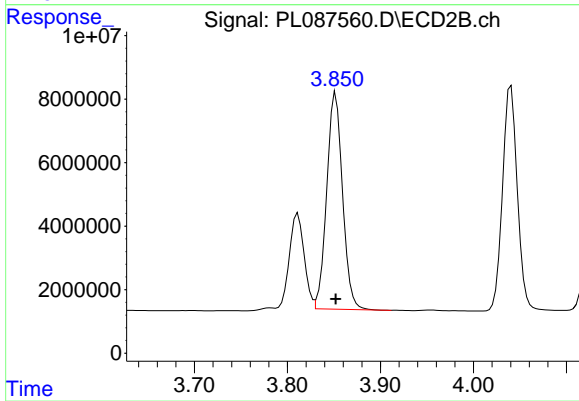
#3 gamma-BHC (Lindane)

R.T.: 3.510 min
 Delta R.T.: 0.000 min
 Response: 81139664
 Conc: 44.65 ng/ml



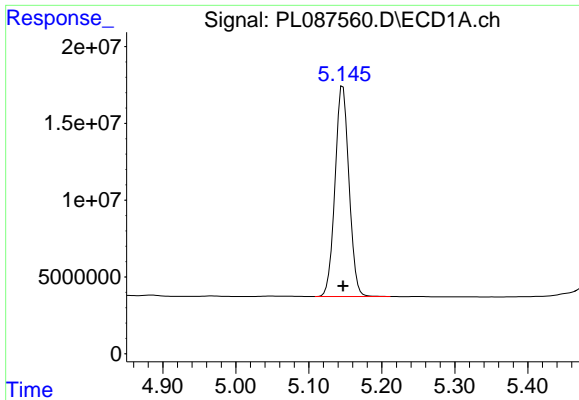
#4 Heptachlor

R.T.: 4.804 min
 Delta R.T.: 0.000 min
 Response: 201741843
 Conc: 45.91 ng/ml



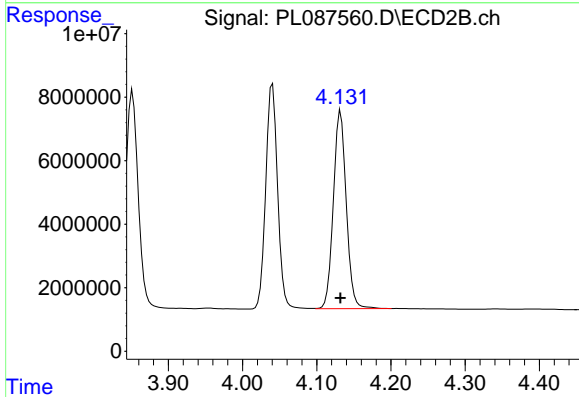
#4 Heptachlor

R.T.: 3.852 min
 Delta R.T.: 0.000 min
 Response: 80685722
 Conc: 45.30 ng/ml

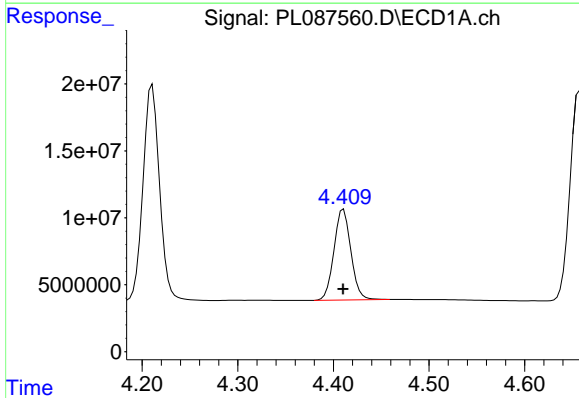


#5 Aldrin
 R.T.: 5.147 min
 Delta R.T.: 0.000 min
 Response: 182313474
 Conc: 42.54 ng/ml

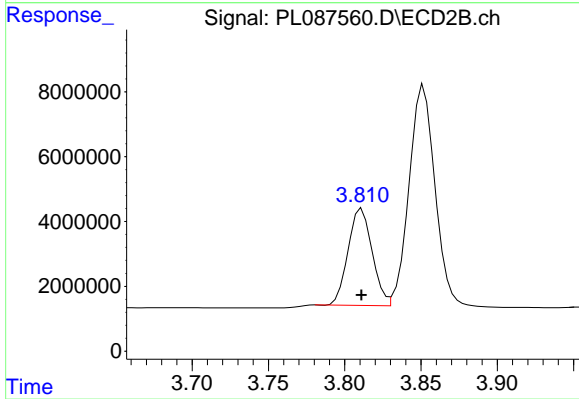
Instrument :
 ECD_L
 ClientSampleId :
 MR-317-0-2MSD



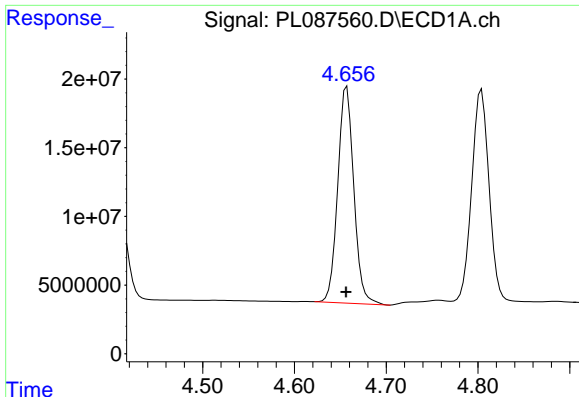
#5 Aldrin
 R.T.: 4.132 min
 Delta R.T.: 0.000 min
 Response: 75586329
 Conc: 42.83 ng/ml



#6 beta-BHC
 R.T.: 4.411 min
 Delta R.T.: 0.000 min
 Response: 83340840
 Conc: 44.80 ng/ml



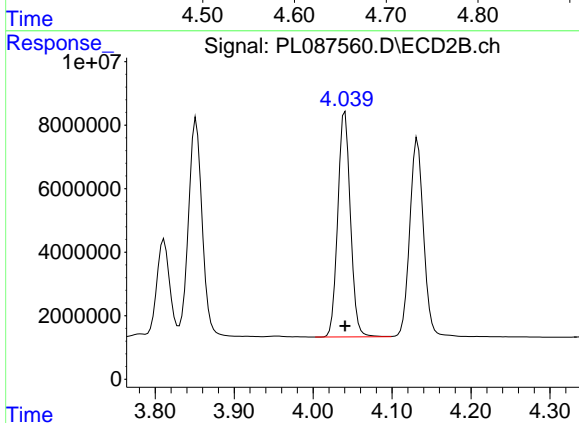
#6 beta-BHC
 R.T.: 3.811 min
 Delta R.T.: 0.000 min
 Response: 32829390
 Conc: 42.92 ng/ml



#7 delta-BHC

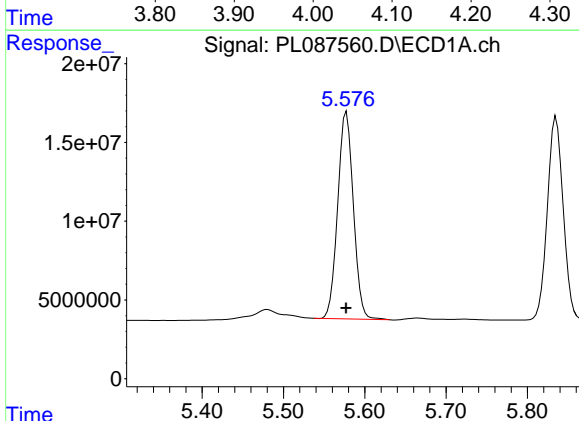
R.T.: 4.657 min
 Delta R.T.: 0.000 min
 Response: 191923000
 Conc: 45.61 ng/ml

Instrument :
 ECD_L
 ClientSampleId :
 MR-317-0-2MSD



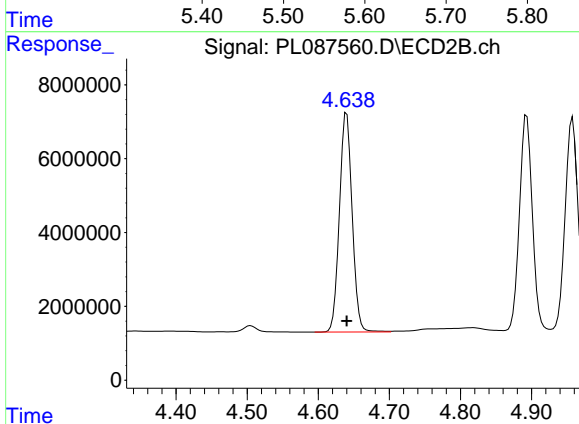
#7 delta-BHC

R.T.: 4.040 min
 Delta R.T.: 0.000 min
 Response: 78786394
 Conc: 45.39 ng/ml



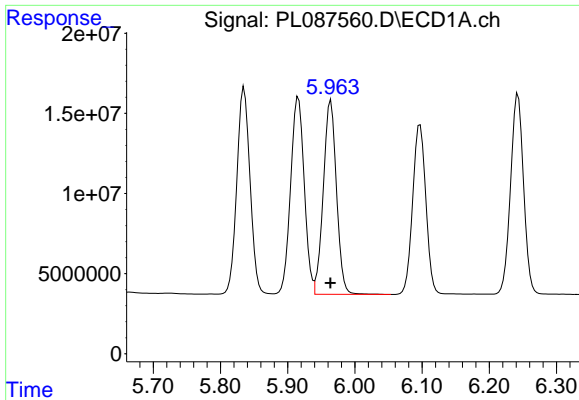
#8 Heptachlor epoxide

R.T.: 5.578 min
 Delta R.T.: 0.000 min
 Response: 175544065
 Conc: 45.82 ng/ml



#8 Heptachlor epoxide

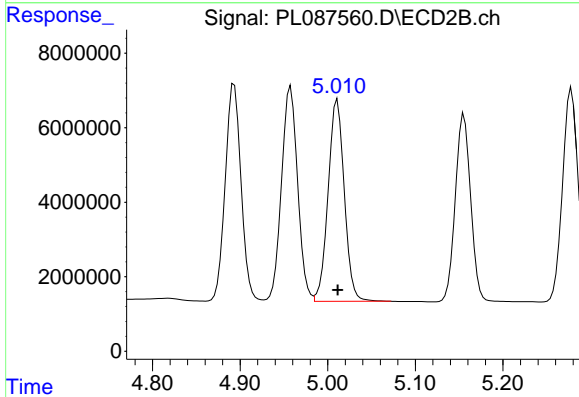
R.T.: 4.640 min
 Delta R.T.: 0.000 min
 Response: 73908327
 Conc: 46.37 ng/ml



#9 Endosulfan I

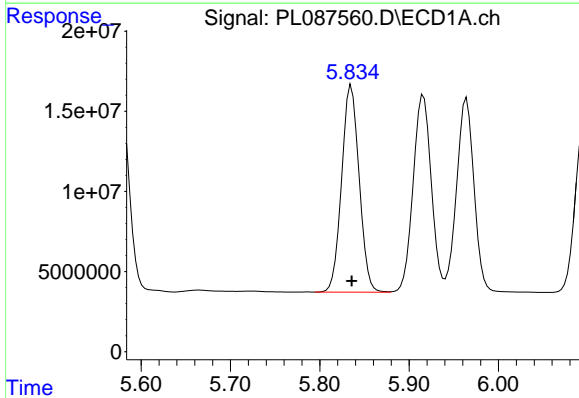
R.T.: 5.964 min
 Delta R.T.: 0.000 min
 Response: 164295866
 Conc: 45.56 ng/ml

Instrument :
 ECD_L
 ClientSampleId :
 MR-317-0-2MSD



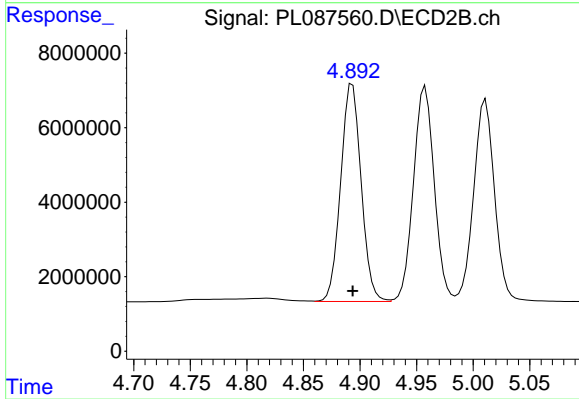
#9 Endosulfan I

R.T.: 5.011 min
 Delta R.T.: 0.000 min
 Response: 69640353
 Conc: 45.02 ng/ml



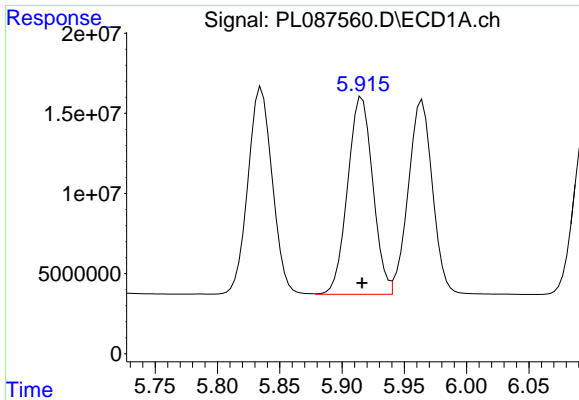
#10 gamma-Chlordane

R.T.: 5.835 min
 Delta R.T.: 0.000 min
 Response: 175812830
 Conc: 45.48 ng/ml



#10 gamma-Chlordane

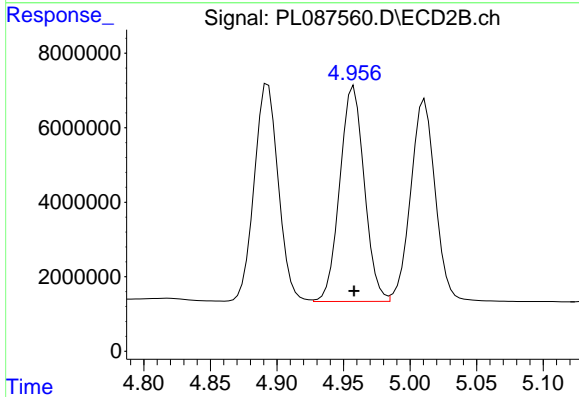
R.T.: 4.893 min
 Delta R.T.: 0.000 min
 Response: 73587774
 Conc: 45.59 ng/ml



#11 alpha-Chlordane

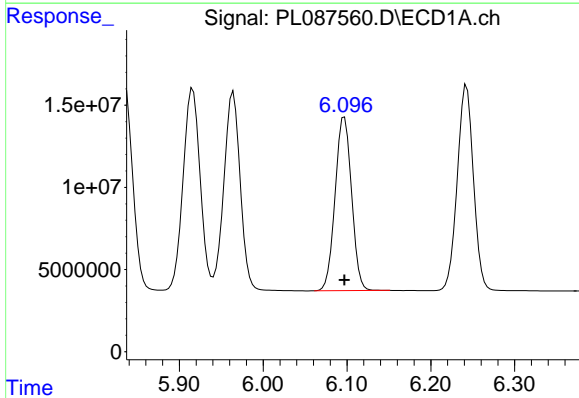
R.T.: 5.916 min
 Delta R.T.: 0.000 min
 Response: 173848448
 Conc: 45.24 ng/ml

Instrument :
 ECD_L
 ClientSampleId :
 MR-317-0-2MSD



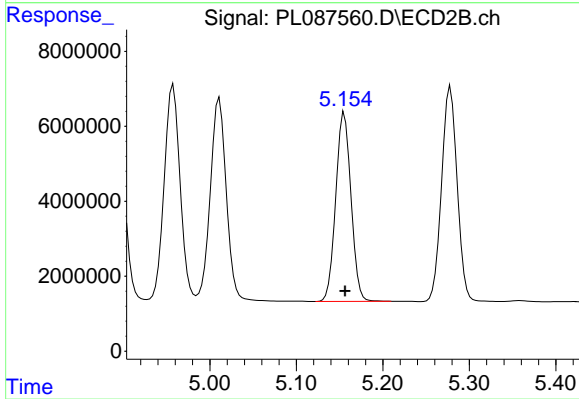
#11 alpha-Chlordane

R.T.: 4.958 min
 Delta R.T.: 0.000 min
 Response: 74008457
 Conc: 44.59 ng/ml



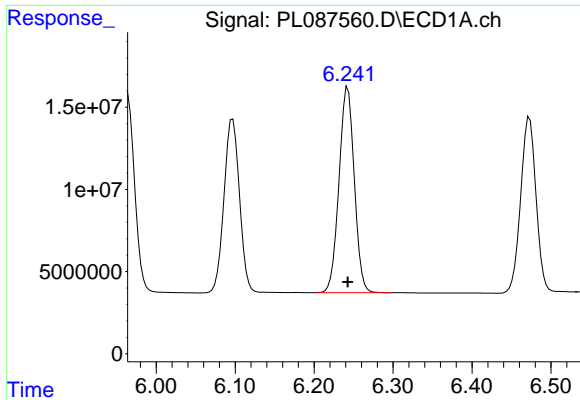
#12 4,4'-DDE

R.T.: 6.097 min
 Delta R.T.: 0.000 min
 Response: 144371224
 Conc: 45.16 ng/ml



#12 4,4'-DDE

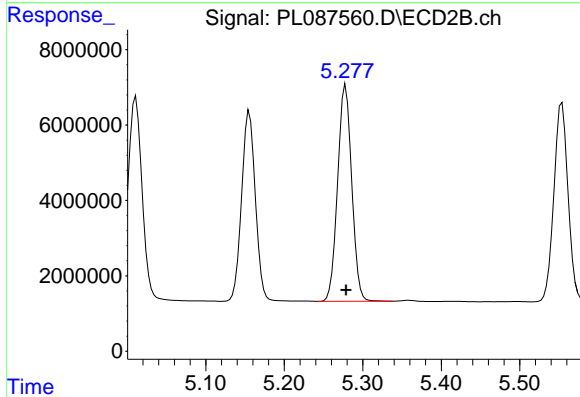
R.T.: 5.156 min
 Delta R.T.: 0.000 min
 Response: 61420562
 Conc: 45.66 ng/ml



#13 Dieldrin

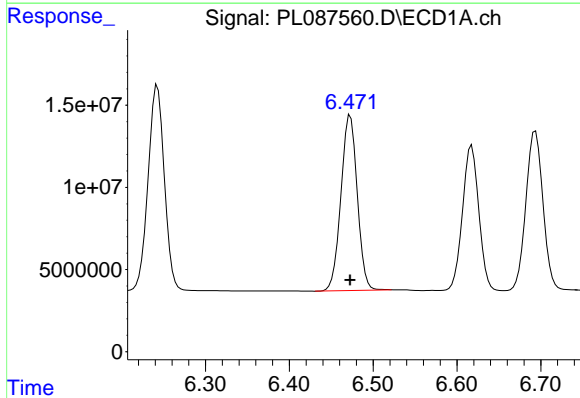
R.T.: 6.243 min
 Delta R.T.: 0.000 min
 Response: 168123060
 Conc: 45.14 ng/ml

Instrument :
 ECD_L
 ClientSampleId :
 MR-317-0-2MSD



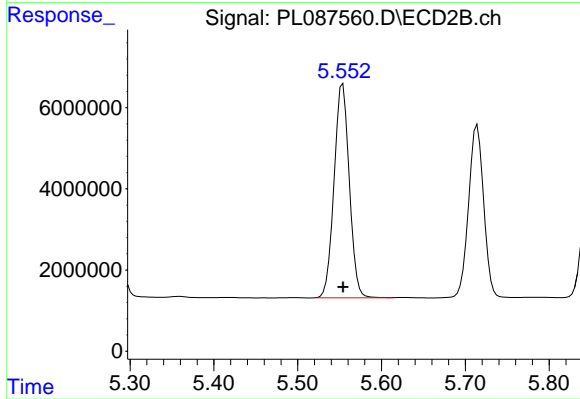
#13 Dieldrin

R.T.: 5.278 min
 Delta R.T.: 0.000 min
 Response: 71843734
 Conc: 45.21 ng/ml



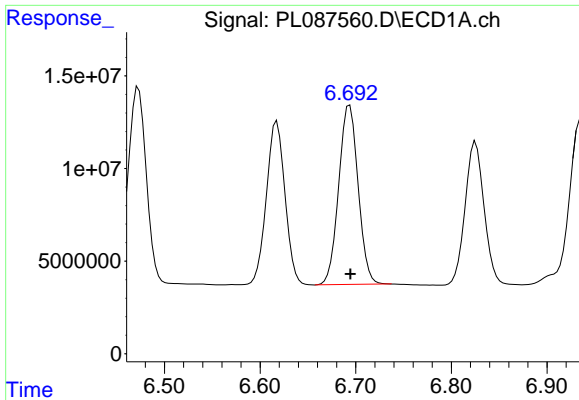
#14 Endrin

R.T.: 6.473 min
 Delta R.T.: 0.000 min
 Response: 144609913
 Conc: 46.04 ng/ml



#14 Endrin

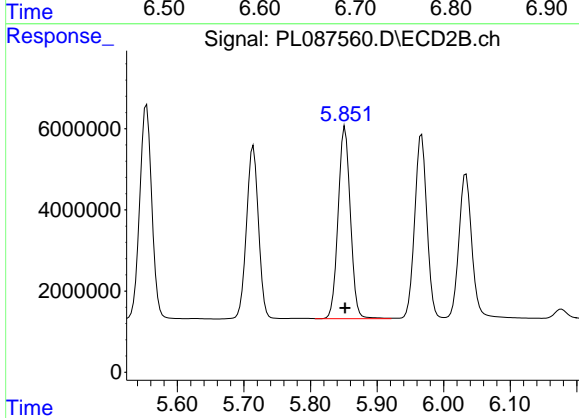
R.T.: 5.554 min
 Delta R.T.: 0.000 min
 Response: 66376870
 Conc: 46.81 ng/ml



#15 Endosulfan II

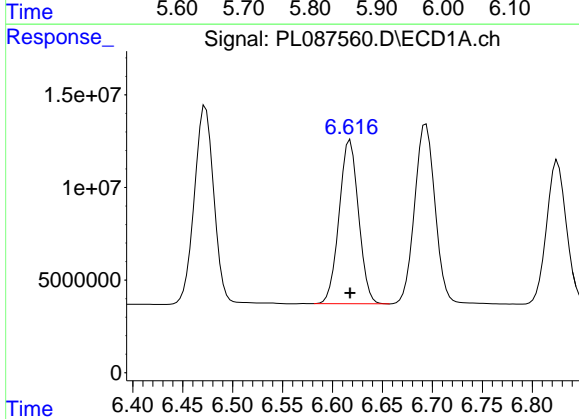
R.T.: 6.694 min
 Delta R.T.: 0.000 min
 Response: 136903015
 Conc: 42.69 ng/ml

Instrument :
 ECD_L
 ClientSampleId :
 MR-317-0-2MSD



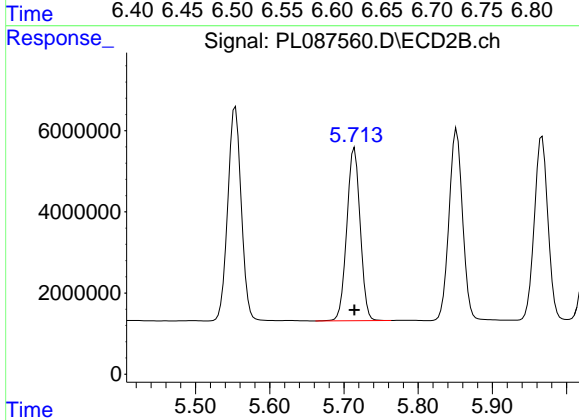
#15 Endosulfan II

R.T.: 5.852 min
 Delta R.T.: 0.000 min
 Response: 60234667
 Conc: 44.00 ng/ml



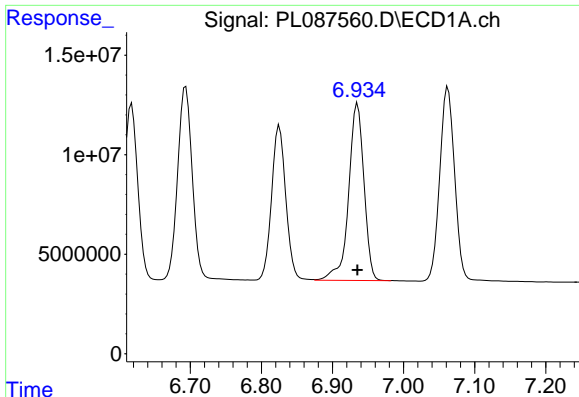
#16 4,4'-DDD

R.T.: 6.618 min
 Delta R.T.: 0.000 min
 Response: 119630666
 Conc: 46.39 ng/ml



#16 4,4'-DDD

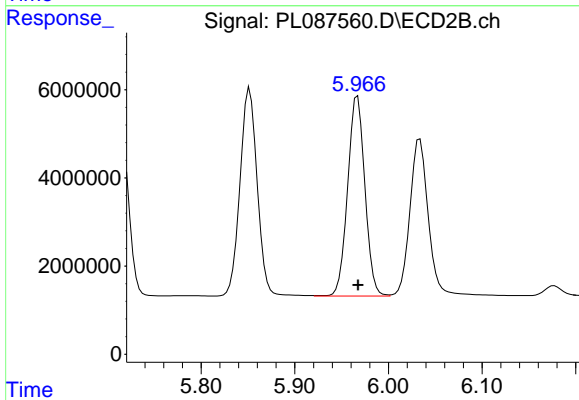
R.T.: 5.714 min
 Delta R.T.: 0.000 min
 Response: 53291969
 Conc: 47.26 ng/ml



#17 4,4'-DDT

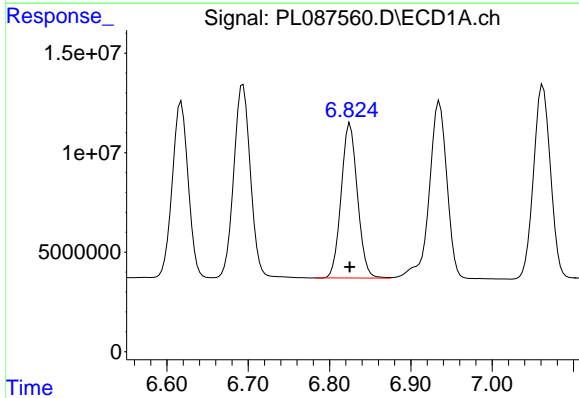
R.T.: 6.935 min
 Delta R.T.: 0.000 min
 Response: 133649627
 Conc: 46.74 ng/ml

Instrument :
 ECD_L
 ClientSampleId :
 MR-317-0-2MSD



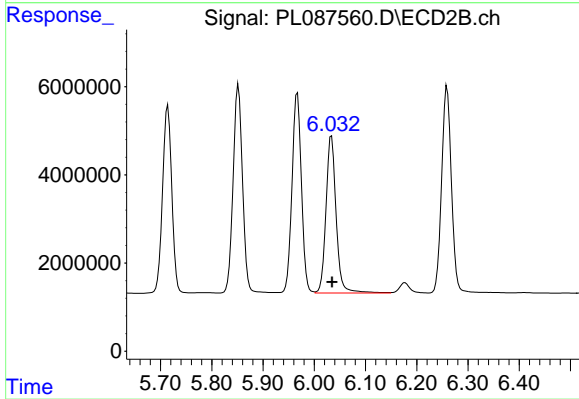
#17 4,4'-DDT

R.T.: 5.967 min
 Delta R.T.: 0.000 min
 Response: 57995475
 Conc: 46.60 ng/ml



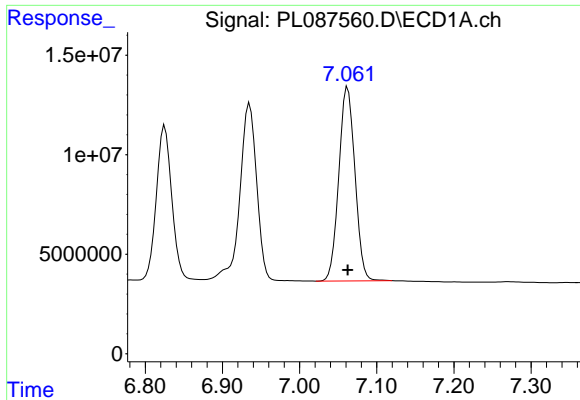
#18 Endrin aldehyde

R.T.: 6.825 min
 Delta R.T.: 0.000 min
 Response: 107856580
 Conc: 42.88 ng/ml



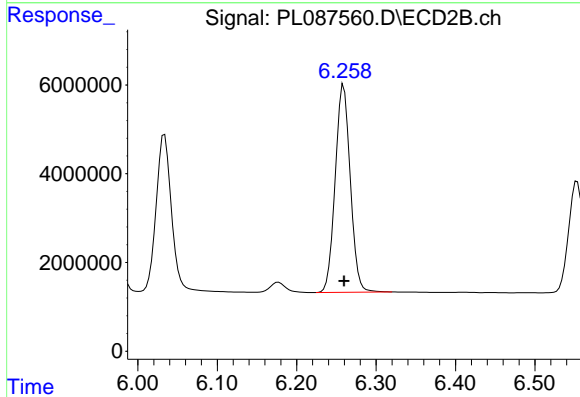
#18 Endrin aldehyde

R.T.: 6.034 min
 Delta R.T.: 0.000 min
 Response: 49012097
 Conc: 42.17 ng/ml

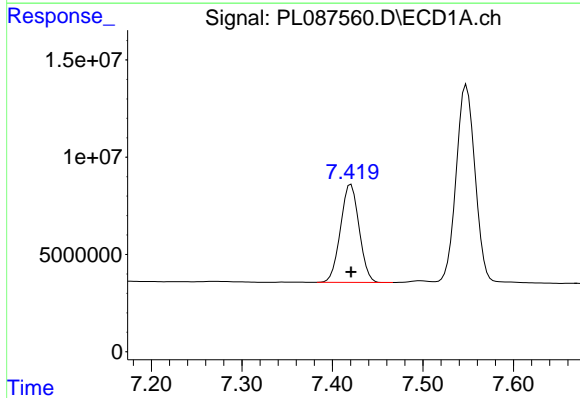


#19 Endosulfan Sulfate
 R.T.: 7.062 min
 Delta R.T.: 0.000 min
 Response: 141284033
 Conc: 46.19 ng/ml

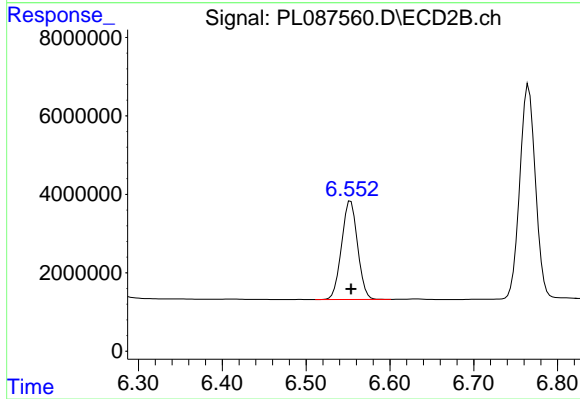
Instrument :
 ECD_L
 ClientSampleId :
 MR-317-0-2MSD



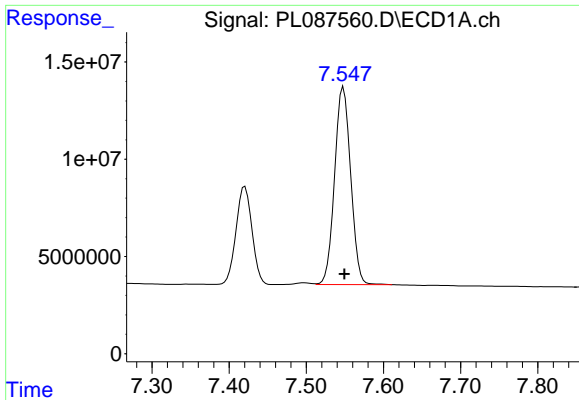
#19 Endosulfan Sulfate
 R.T.: 6.259 min
 Delta R.T.: 0.000 min
 Response: 61783244
 Conc: 47.07 ng/ml



#20 Methoxychlor
 R.T.: 7.421 min
 Delta R.T.: 0.000 min
 Response: 72074614
 Conc: 44.39 ng/ml



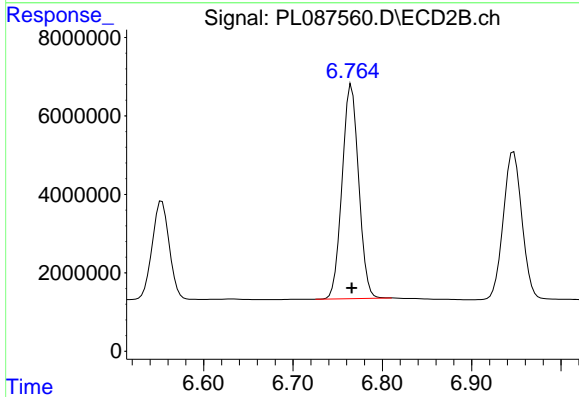
#20 Methoxychlor
 R.T.: 6.553 min
 Delta R.T.: 0.000 min
 Response: 33364920
 Conc: 45.33 ng/ml



#21 Endrin ketone

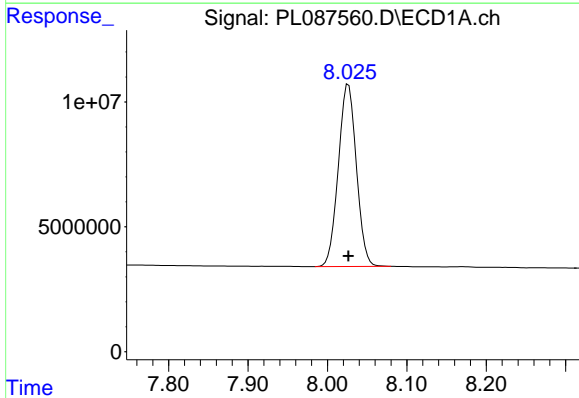
R.T.: 7.548 min
 Delta R.T.: -0.001 min
 Response: 147339270
 Conc: 45.30 ng/ml

Instrument :
 ECD_L
 ClientSampleId :
 MR-317-0-2MSD



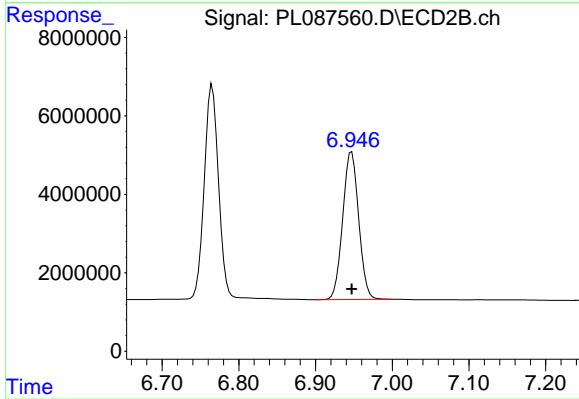
#21 Endrin ketone

R.T.: 6.765 min
 Delta R.T.: 0.000 min
 Response: 70427012
 Conc: 45.94 ng/ml



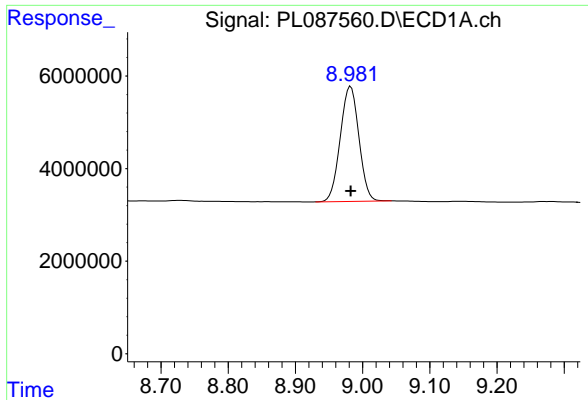
#22 Mirex

R.T.: 8.026 min
 Delta R.T.: 0.000 min
 Response: 115389638
 Conc: 41.15 ng/ml



#22 Mirex

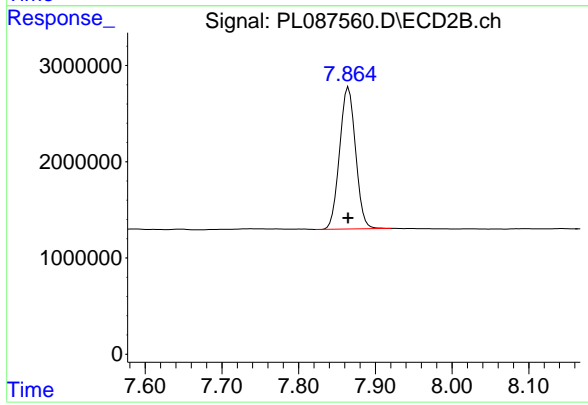
R.T.: 6.947 min
 Delta R.T.: 0.000 min
 Response: 54768305
 Conc: 40.83 ng/ml



#28 Decachlorobiphenyl

R.T.: 8.982 min
Delta R.T.: 0.000 min
Response: 47713421
Conc: 16.75 ng/ml

Instrument :
ECD_L
ClientSampleId :
MR-317-0-2MSD



#28 Decachlorobiphenyl

R.T.: 7.865 min
Delta R.T.: 0.000 min
Response: 21325923
Conc: 16.83 ng/ml