

Data Path : Z:\pestpcbsrv\HPCHEM1\ECD_L\Data\PL122823\
 Data File : PL087564.D
 Signal(s) : Signal #1: ECD1A.ch Signal #2: ECD2B.ch
 Acq On : 29 Dec 2023 01:39
 Operator : AR\AJ
 Sample : 06016-02
 Misc :
 ALS Vial : 31 Sample Multiplier: 1

Instrument :
 ECD_L
ClientSampleId :
 MR-322-0-2

Manual Integrations
APPROVED
 Reviewed By :Abdul Mirza 12/29/2023
 Supervised By :Ankita Jodhani 12/29/2023

Integration File signal 1: autoint1.e
 Integration File signal 2: autoint2.e
 Quant Time: Dec 29 03:27:51 2023
 Quant Method : Z:\pestpcbsrv\HPCHEM1\ECD_L\methods\PL122823.M
 Quant Title : GC Extractables
 QLast Update : Fri Dec 29 03:17:47 2023
 Response via : Initial Calibration
 Integrator: ChemStation

Volume Inj. : 1 µl
 Signal #1 Phase : ZB-MR2 Signal #2 Phase: ZB-MR1
 Signal #1 Info : 30M x 0.32mm x0.2 Signal #2 Info : 30M x 0.32mm x0.5µm

Compound	RT#1	RT#2	Resp#1	Resp#2	ng/ml	ng/ml

System Monitoring Compounds						
1) SA Tetrachlo...	3.419	2.675	40167088	16973241	13.417m	14.012
28) SA Decachlor...	8.982	7.864	45765573	20643680	16.069	16.296

Target Compounds

 (f)=RT Delta > 1/2 Window (#)=Amounts differ by > 25% (m)=manual int.

Data Path : Z:\pestpcbsrv\HPCHEM1\ECD_L\Data\PL122823\
 Data File : PL087564.D
 Signal(s) : Signal #1: ECD1A.ch Signal #2: ECD2B.ch
 Acq On : 29 Dec 2023 01:39
 Operator : AR\AJ
 Sample : 06016-02
 Misc :
 ALS Vial : 31 Sample Multiplier: 1

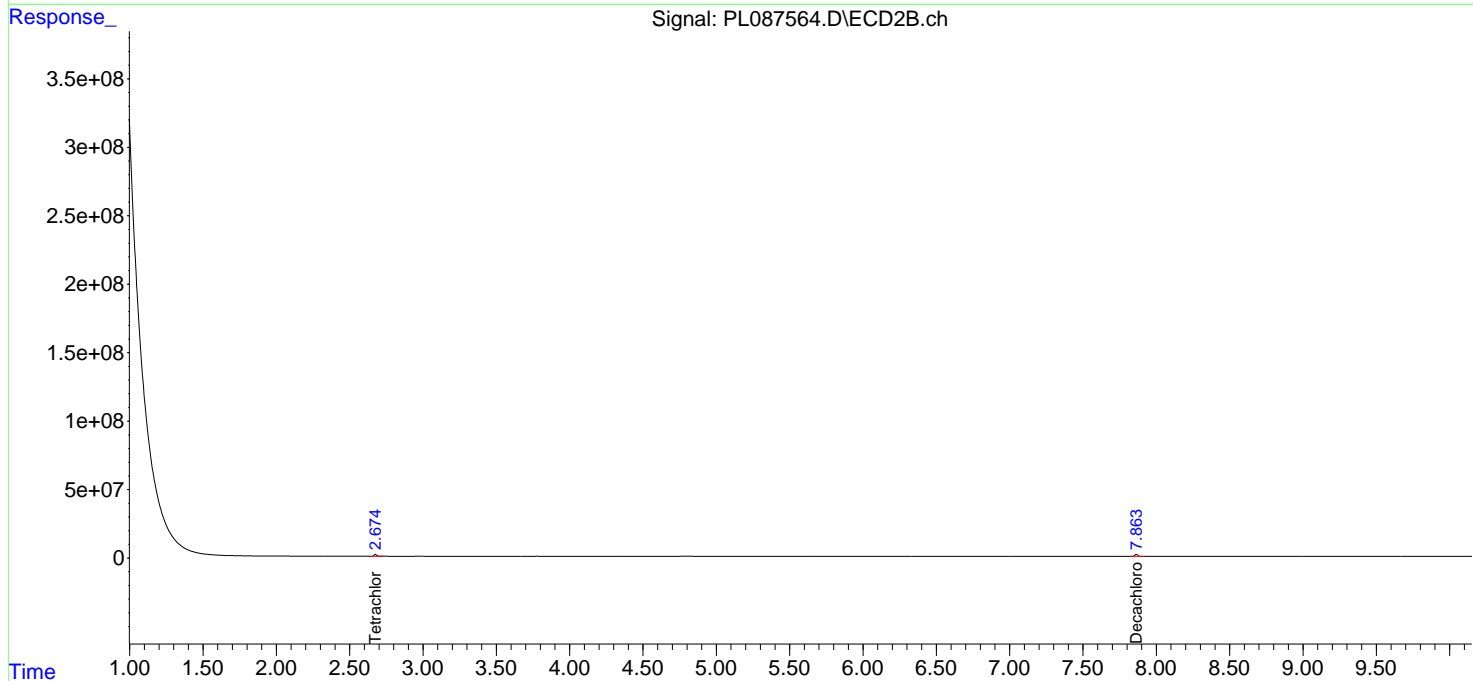
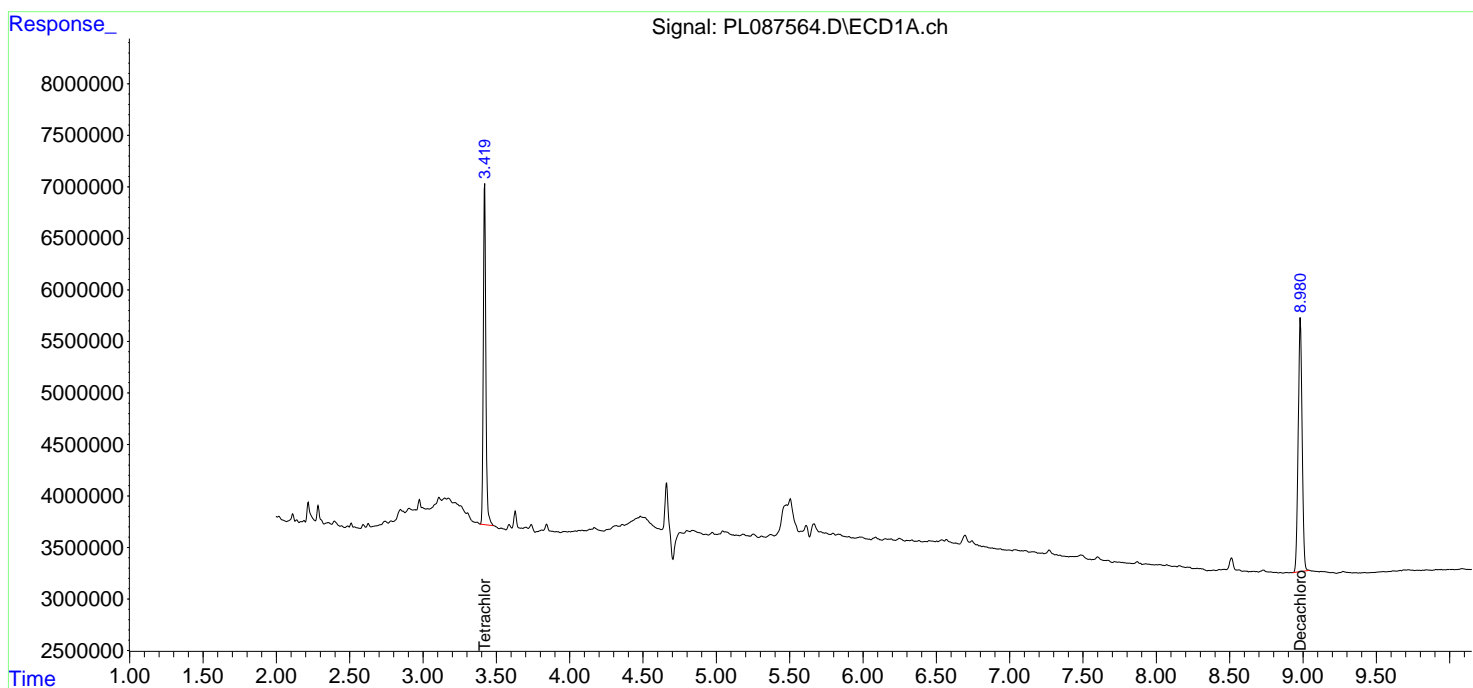
Instrument :
 ECD_L
 ClientSampleID :
 MR-322-0-2

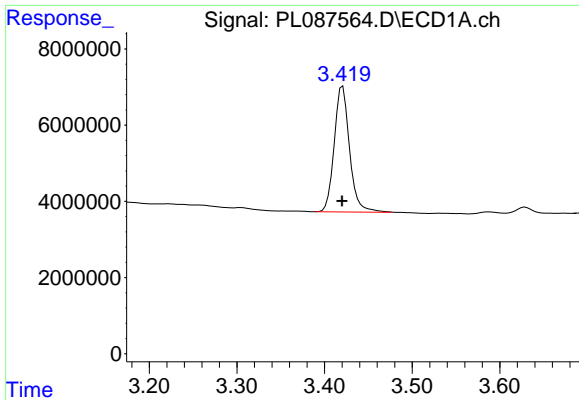
Manual Integrations
 APPROVED

Reviewed By :Abdul Mirza 12/29/2023
 Supervised By :Ankita Jodhani 12/29/2023

Integration File signal 1: autoint1.e
 Integration File signal 2: autoint2.e
 Quant Time: Dec 29 03:27:51 2023
 Quant Method : Z:\pestpcbsrv\HPCHEM1\ECD_L\methods\PL122823.M
 Quant Title : GC Extractables
 QLast Update : Fri Dec 29 03:17:47 2023
 Response via : Initial Calibration
 Integrator: ChemStation

Volume Inj. : 1 µl
 Signal #1 Phase : ZB-MR2 Signal #2 Phase: ZB-MR1
 Signal #1 Info : 30M x 0.32mm x0.2 Signal #2 Info : 30M x 0.32mm x0.5µm





#1 Tetrachloro-m-xylene

R.T.: 3.419 min
 Delta R.T.: 0.000 min
 Response: 40167088
 Conc: 13.42 ng/ml

Instrument :

ECD_L

ClientSampleId :

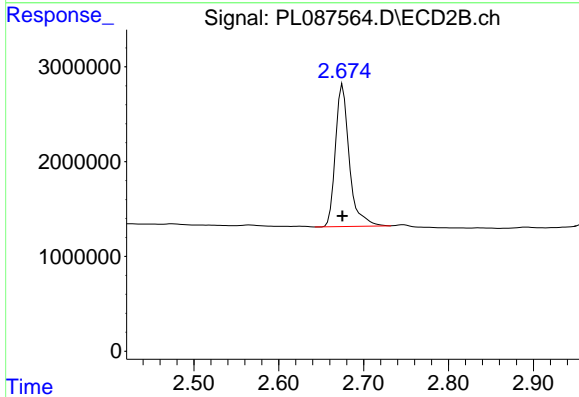
MR-322-0-2

Manual Integrations

APPROVED

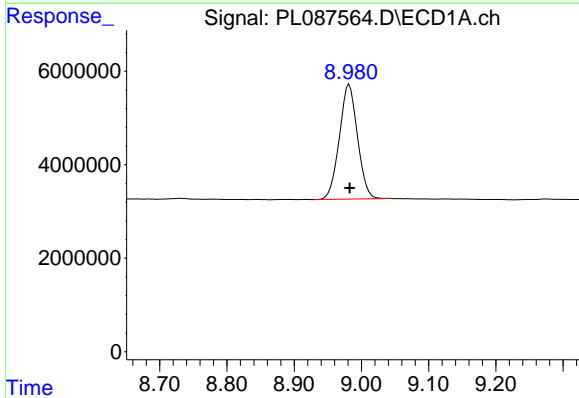
Reviewed By :Abdul Mirza 12/29/2023

Supervised By :Ankita Jodhani 12/29/2023



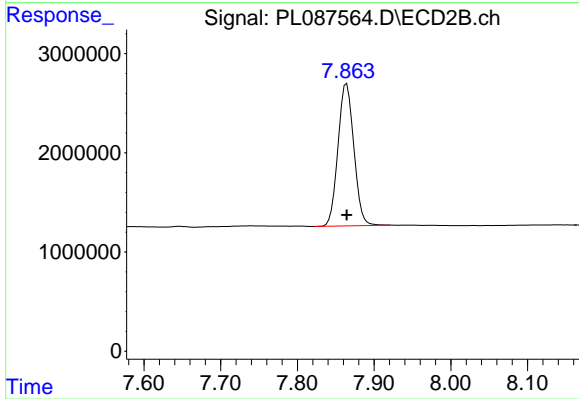
#1 Tetrachloro-m-xylene

R.T.: 2.675 min
 Delta R.T.: 0.000 min
 Response: 16973241
 Conc: 14.01 ng/ml



#28 Decachlorobiphenyl

R.T.: 8.982 min
 Delta R.T.: 0.000 min
 Response: 45765573
 Conc: 16.07 ng/ml



#28 Decachlorobiphenyl

R.T.: 7.864 min
 Delta R.T.: 0.000 min
 Response: 20643680
 Conc: 16.30 ng/ml