

Data Path : Z:\pestpcbsrv\HPCHEM1\ECD_L\Data\PL122920\
 Data File : PL063842.D
 Signal(s) : Signal #1: ECD1A.ch Signal #2: ECD2B.ch
 Acq On : 29 Dec 2020 13:35
 Operator : AR\AJ
 Sample : L5221-06
 Misc :
 ALS Vial : 12 Sample Multiplier: 1

Instrument :
 ECD_L
 ClientSampleId :

Integration File signal 1: autoint1.e
 Integration File signal 2: autoint2.e
 Quant Time: Dec 30 03:43:49 2020
 Quant Method : Z:\pestpcbsrv\HPCHEM1\ECD_L\methods\PL122220.M
 Quant Title : GC Extractables
 QLast Update : Tue Dec 22 14:02:42 2020
 Response via : Initial Calibration
 Integrator: ChemStation

Volume Inj. : 1 µl
 Signal #1 Phase : ZB-MR2 Signal #2 Phase: ZB-MR1
 Signal #1 Info : 30M x 0.32mm x0.2 Signal #2 Info : 30M x 0.32mm x0.5µm

Compound	RT#1	RT#2	Resp#1	Resp#2	ng/ml	ng/ml

System Monitoring Compounds						
1) SA Tetrachlo...	3.437	4.110	37186991	31545454	12.404	12.356
28) SA Decachlor...	8.175	9.264	25011446	16479899	9.078	8.359
Target Compounds						
2) A alpha-BHC	0.000	4.533f	0	3380006	N.D.	0.938 #
6) B beta-BHC	0.000	4.988	0	2778732	N.D.	1.583 #
12) B 4,4'-DDE	5.590	6.481	5653099	4912644	1.644	1.989
17) MA 4,4'-DDT	6.341	0.000	4017349	0	1.516	N.D. #

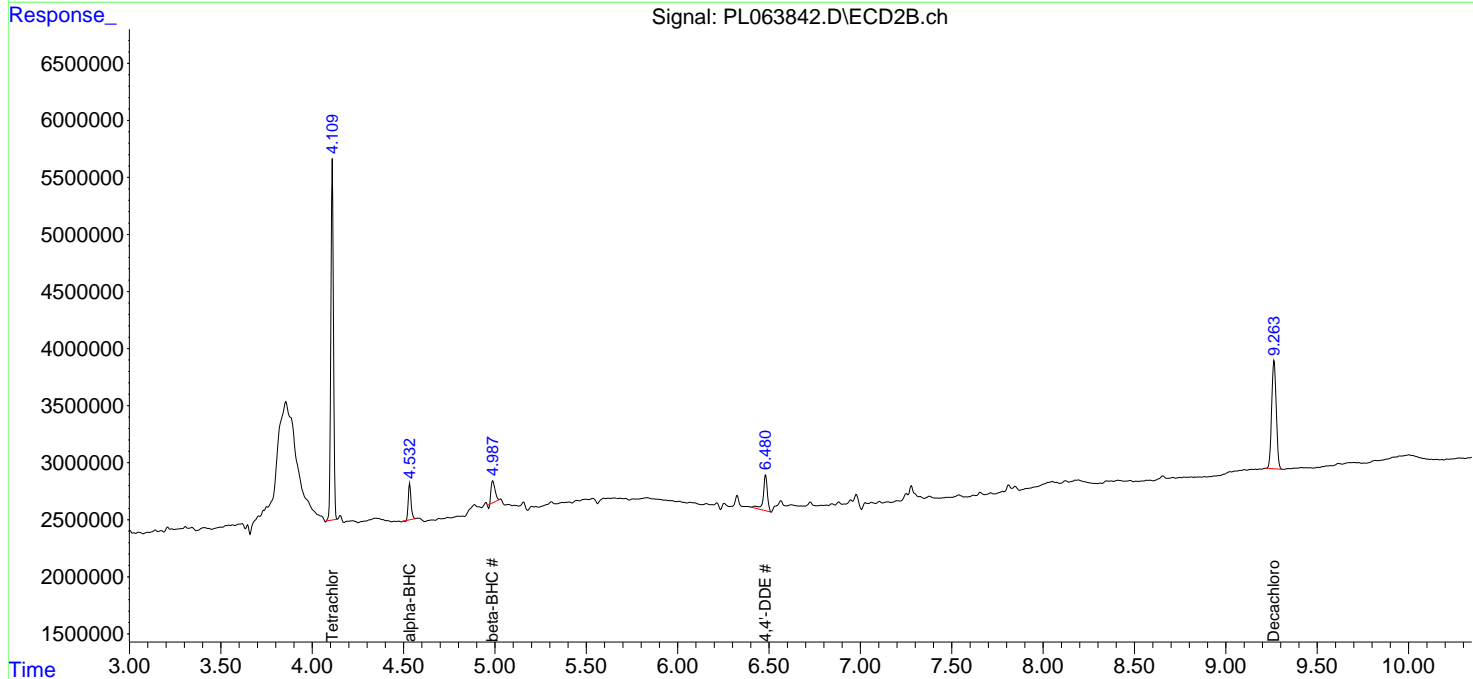
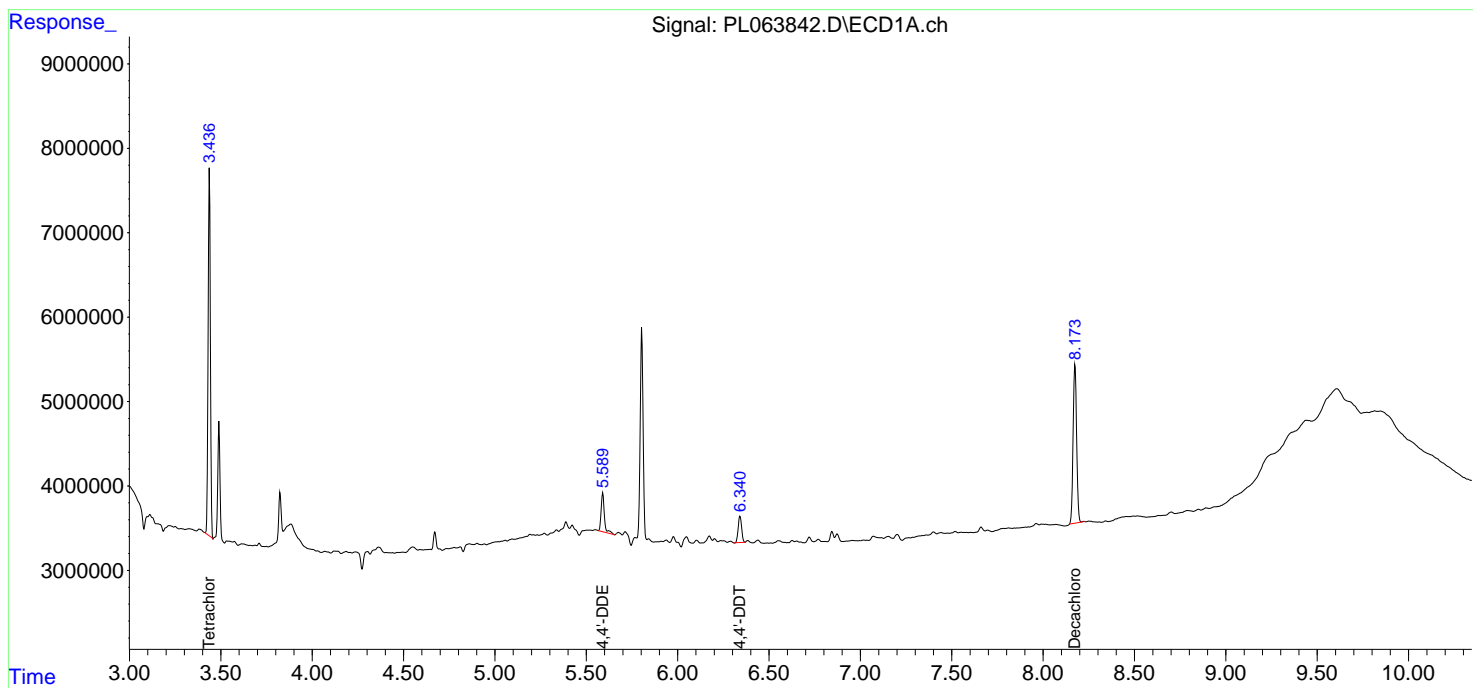
(f)=RT Delta > 1/2 Window (#)=Amounts differ by > 25% (m)=manual int.

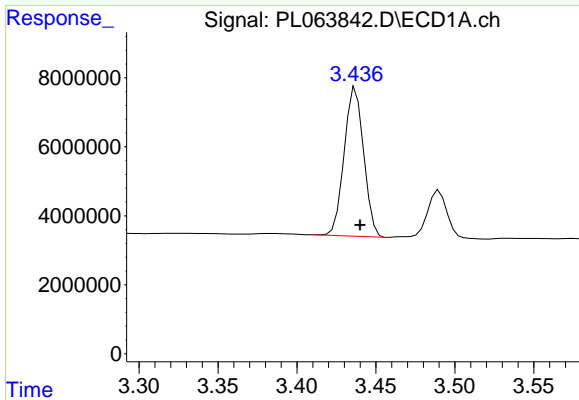
Data Path : Z:\pestpcbsrv\HPCHEM1\ECD_L\Data\PL122920\
 Data File : PL063842.D
 Signal(s) : Signal #1: ECD1A.ch Signal #2: ECD2B.ch
 Acq On : 29 Dec 2020 13:35
 Operator : AR\AJ
 Sample : L5221-06
 Misc :
 ALS Vial : 12 Sample Multiplier: 1

Instrument :
 ECD_L
 ClientSampled :

Integration File signal 1: autoint1.e
 Integration File signal 2: autoint2.e
 Quant Time: Dec 30 03:43:49 2020
 Quant Method : Z:\pestpcbsrv\HPCHEM1\ECD_L\methods\PL122220.M
 Quant Title : GC Extractables
 QLast Update : Tue Dec 22 14:02:42 2020
 Response via : Initial Calibration
 Integrator: ChemStation

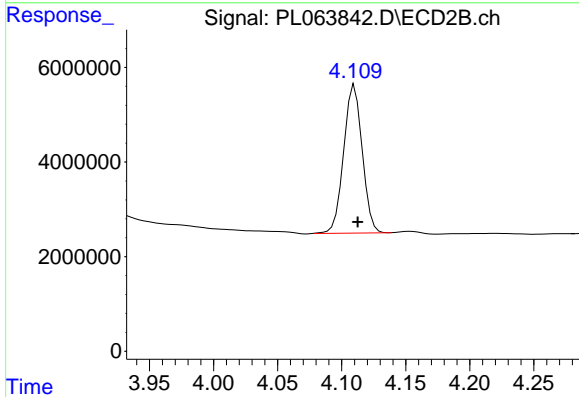
Volume Inj. : 1 µl
 Signal #1 Phase : ZB-MR2 Signal #2 Phase: ZB-MR1
 Signal #1 Info : 30M x 0.32mm x0.2 Signal #2 Info : 30M x 0.32mm x0.5µm



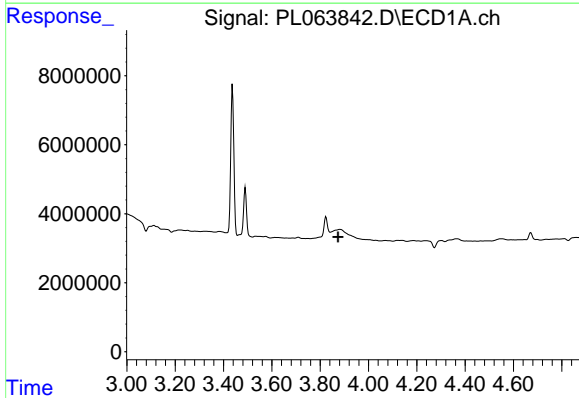


#1 Tetrachloro-m-xylene
 R.T.: 3.437 min
 Delta R.T.: -0.003 min
 Response: 37186991
 Conc: 12.40 ng/ml

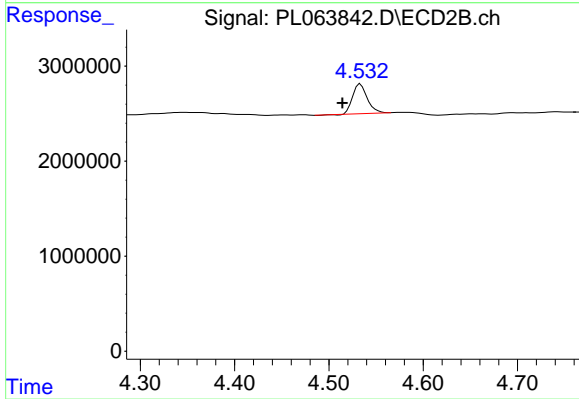
Instrument :
 ECD_L
 ClientSampleId :



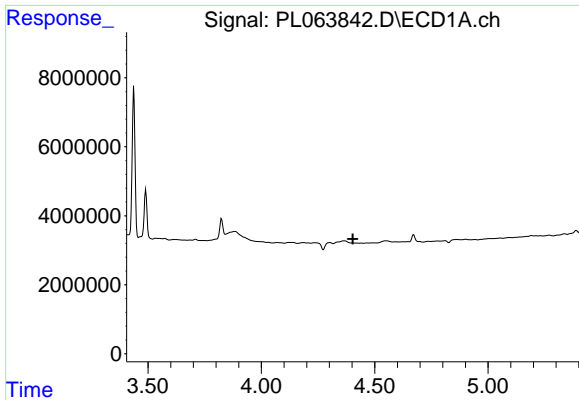
#1 Tetrachloro-m-xylene
 R.T.: 4.110 min
 Delta R.T.: -0.003 min
 Response: 31545454
 Conc: 12.36 ng/ml



#2 alpha-BHC
 R.T.: 0.000 min
 Exp R.T. : 3.875 min
 Response: 0
 Conc: N.D.



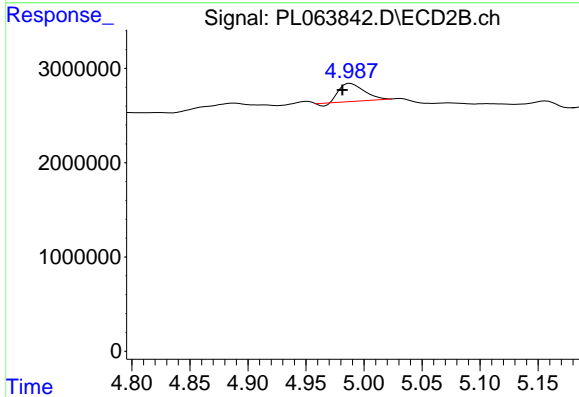
#2 alpha-BHC
 R.T.: 4.533 min
 Delta R.T.: 0.019 min
 Response: 3380006
 Conc: 0.94 ng/ml



#6 beta-BHC

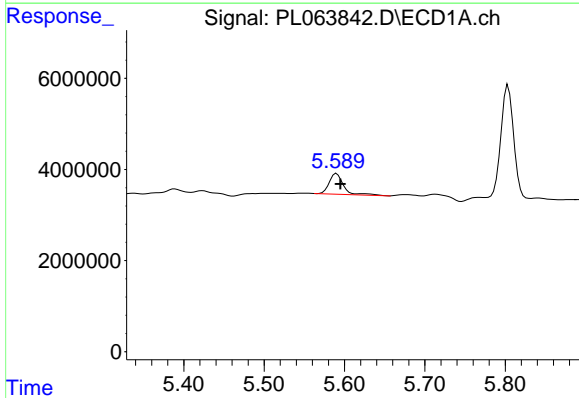
R.T.: 0.000 min
 Exp R.T.: 4.404 min
 Response: 0
 Conc: N.D.

Instrument :
 ECD_L
 ClientSampled :



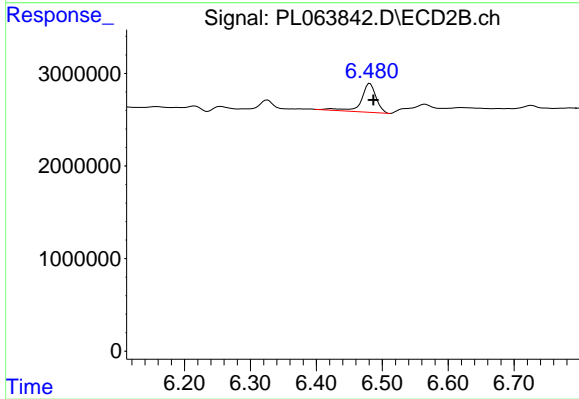
#6 beta-BHC

R.T.: 4.988 min
 Delta R.T.: 0.007 min
 Response: 2778732
 Conc: 1.58 ng/ml



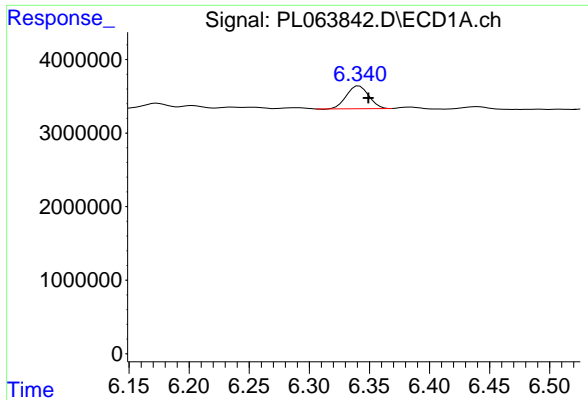
#12 4,4'-DDE

R.T.: 5.590 min
 Delta R.T.: -0.005 min
 Response: 5653099
 Conc: 1.64 ng/ml



#12 4,4'-DDE

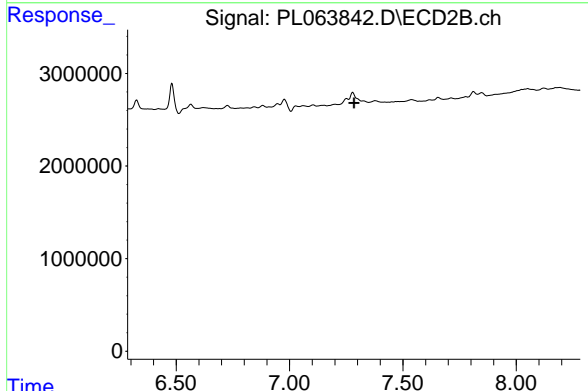
R.T.: 6.481 min
 Delta R.T.: -0.005 min
 Response: 4912644
 Conc: 1.99 ng/ml



#17 4,4'-DDT

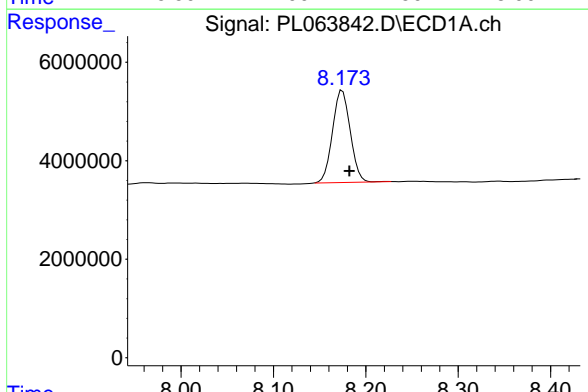
R.T.: 6.341 min
 Delta R.T.: -0.008 min
 Response: 4017349
 Conc: 1.52 ng/ml

Instrument :
 ECD_L
 ClientSampled :



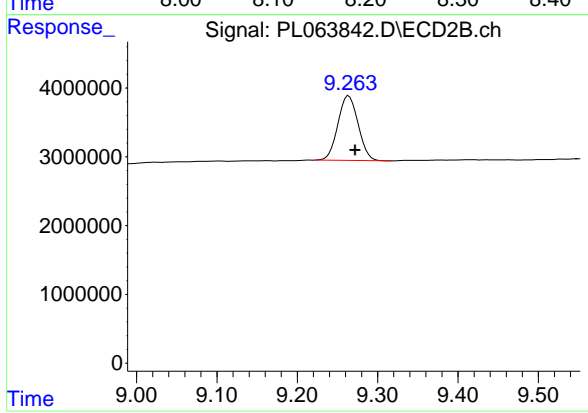
#17 4,4'-DDT

R.T.: 0.000 min
 Exp R.T. : 7.284 min
 Response: 0
 Conc: N.D.



#28 Decachlorobiphenyl

R.T.: 8.175 min
 Delta R.T.: -0.008 min
 Response: 25011446
 Conc: 9.08 ng/ml



#28 Decachlorobiphenyl

R.T.: 9.264 min
 Delta R.T.: -0.008 min
 Response: 16479899
 Conc: 8.36 ng/ml