

Data Path : Z:\pestpcbsrv\HPCHEM1\ECD_L\Data\PL123019\
 Data File : PL055372.D
 Signal(s) : Signal #1: ECD1A.ch Signal #2: ECD2B.ch
 Acq On : 30 Dec 2019 15:09
 Operator : SG\AJ
 Sample : K6552-07
 Misc :
 ALS Vial : 11 Sample Multiplier: 1

Instrument :
 ECD_L
 ClientSampleId :

Integration File signal 1: autoint1.e
 Integration File signal 2: autoint2.e
 Quant Time: Dec 31 00:52:54 2019
 Quant Method : Z:\pestpcbsrv\HPCHEM1\ECD_L\methods\PL122119.M
 Quant Title : GC Extractables
 QLast Update : Sat Dec 21 05:21:06 2019
 Response via : Initial Calibration
 Integrator: ChemStation

Volume Inj. : 1 µl
 Signal #1 Phase : ZB-MR2 Signal #2 Phase: ZB-MR1
 Signal #1 Info : 30M x 0.32mm x0.2 Signal #2 Info : 30M x 0.32mm x0.5µm

Compound	RT#1	RT#2	Resp#1	Resp#2	ng/ml	ng/ml
System Monitoring Compounds						
1) SA Tetrachlo...	3.535	4.049	130.1E6	35790327	12.370	13.545
28) SA Decachlor...	8.316	9.151	111.7E6	30074715	12.037	13.624
Target Compounds						
12) B 4,4'-DDE	5.716	6.392	35886742	7943366	2.693	3.258
17) MA 4,4'-DDT	0.000	7.185	0	2437346	N.D.	1.242 #
23) Chlordane-1	4.418	0.000	20035697	0	52.672	N.D. #

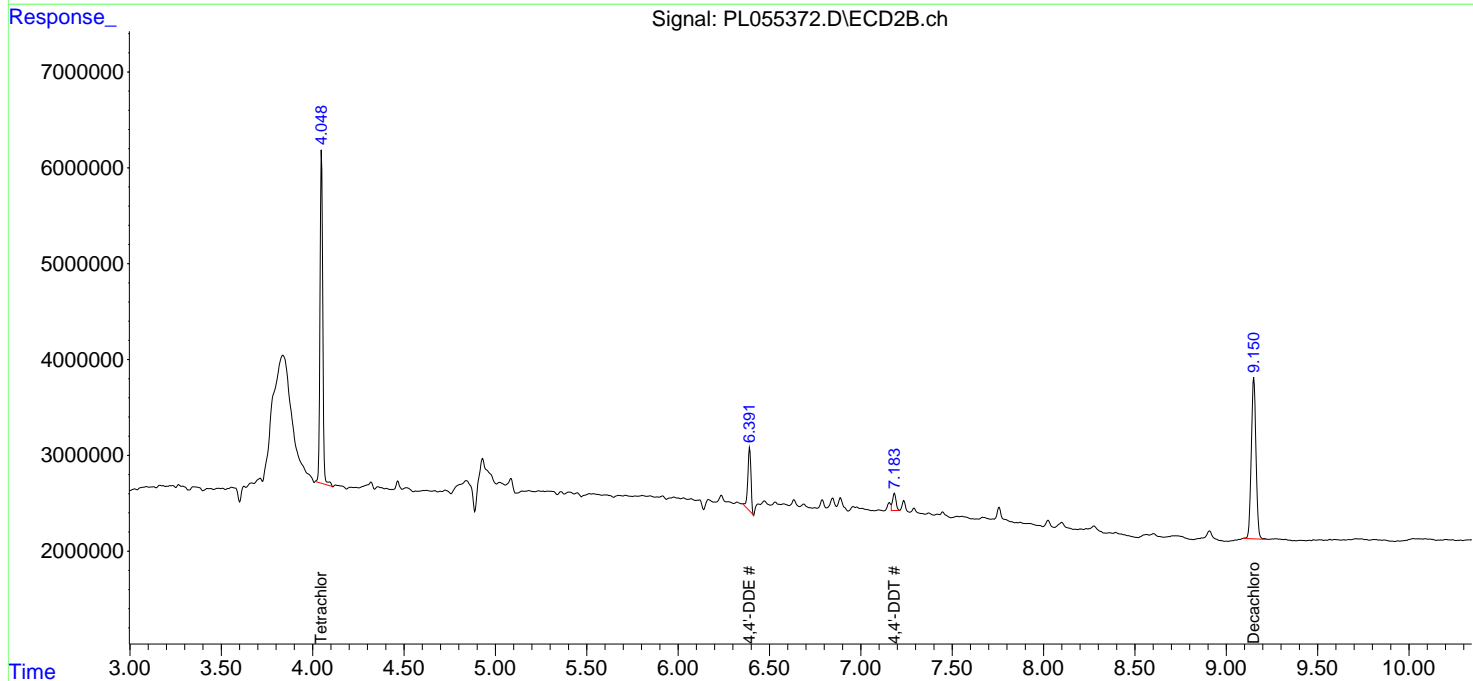
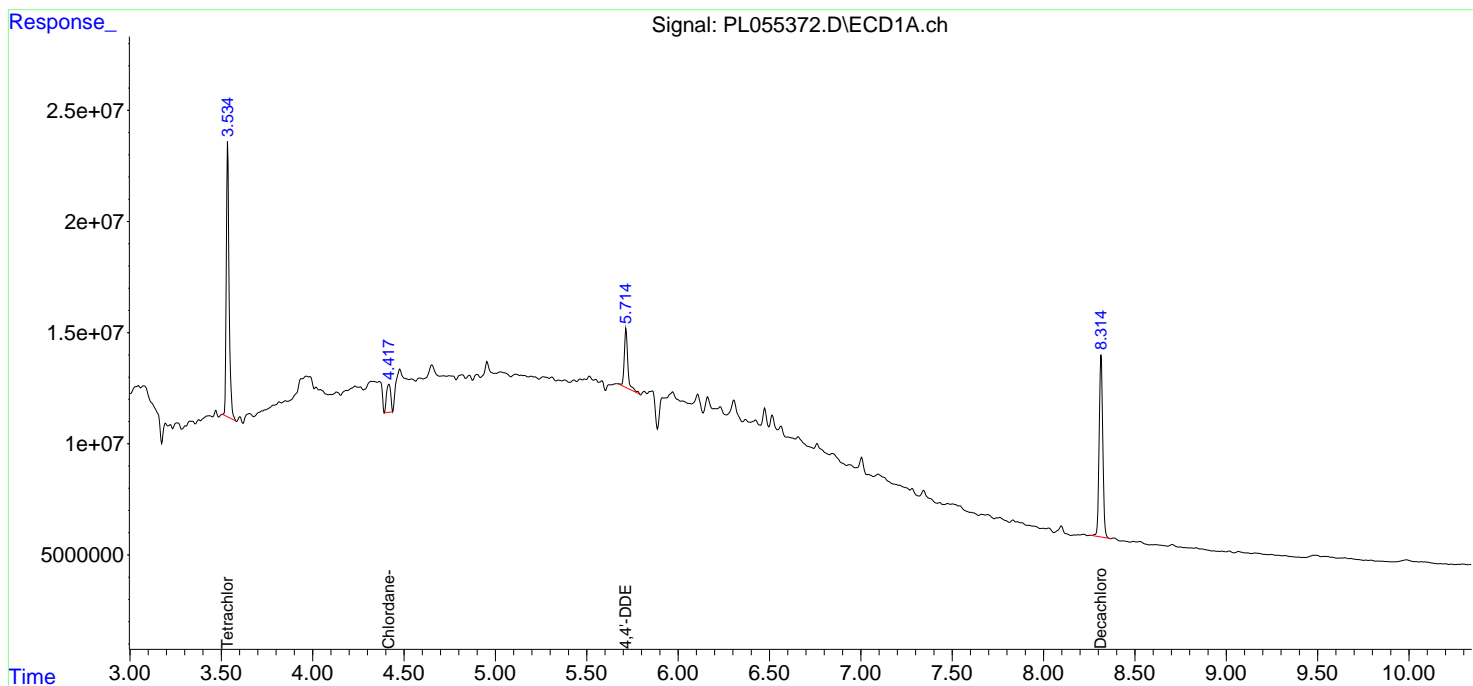
(f)=RT Delta > 1/2 Window (#)=Amounts differ by > 25% (m)=manual int.

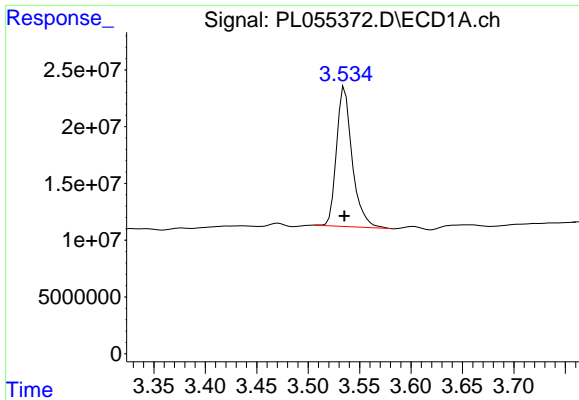
Data Path : Z:\pestpcbsrv\HPCHEM1\ECD_L\Data\PL123019\
 Data File : PL055372.D
 Signal(s) : Signal #1: ECD1A.ch Signal #2: ECD2B.ch
 Acq On : 30 Dec 2019 15:09
 Operator : SG\AJ
 Sample : K6552-07
 Misc :
 ALS Vial : 11 Sample Multiplier: 1

Instrument :
 ECD_L
 ClientSampleId :

Integration File signal 1: autoint1.e
 Integration File signal 2: autoint2.e
 Quant Time: Dec 31 00:52:54 2019
 Quant Method : Z:\pestpcbsrv\HPCHEM1\ECD_L\methods\PL122119.M
 Quant Title : GC Extractables
 QLast Update : Sat Dec 21 05:21:06 2019
 Response via : Initial Calibration
 Integrator: ChemStation

Volume Inj. : 1 µl
 Signal #1 Phase : ZB-MR2 Signal #2 Phase: ZB-MR1
 Signal #1 Info : 30M x 0.32mm x0.2 Signal #2 Info : 30M x 0.32mm x0.5µm

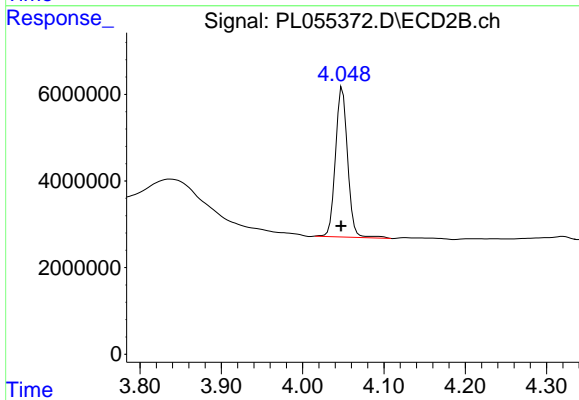




#1 Tetrachloro-m-xylene

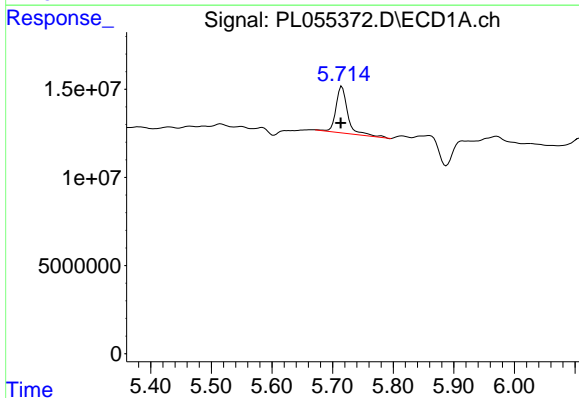
R.T.: 3.535 min
Delta R.T.: 0.000 min
Response: 130089982
Conc: 12.37 ng/ml

Instrument :
ECD_L
ClientSampleId :



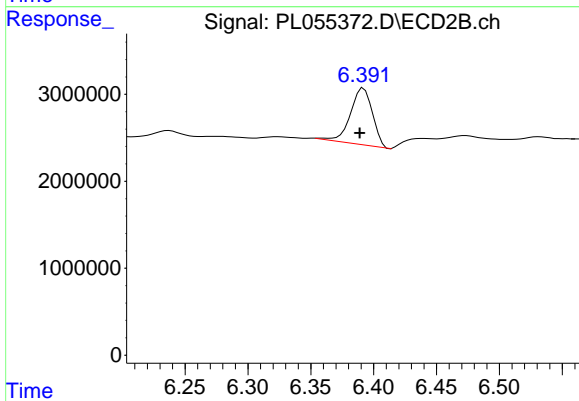
#1 Tetrachloro-m-xylene

R.T.: 4.049 min
Delta R.T.: 0.002 min
Response: 35790327
Conc: 13.55 ng/ml



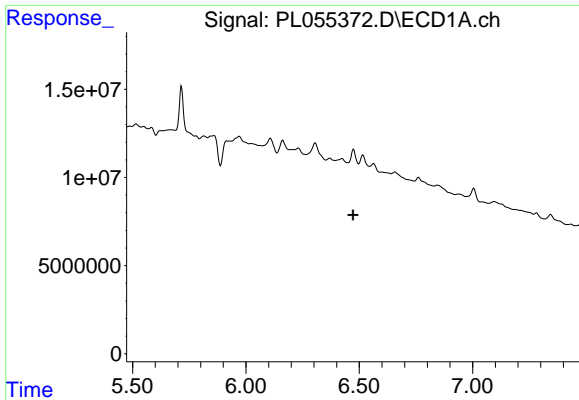
#12 4,4'-DDE

R.T.: 5.716 min
Delta R.T.: 0.002 min
Response: 35886742
Conc: 2.69 ng/ml



#12 4,4'-DDE

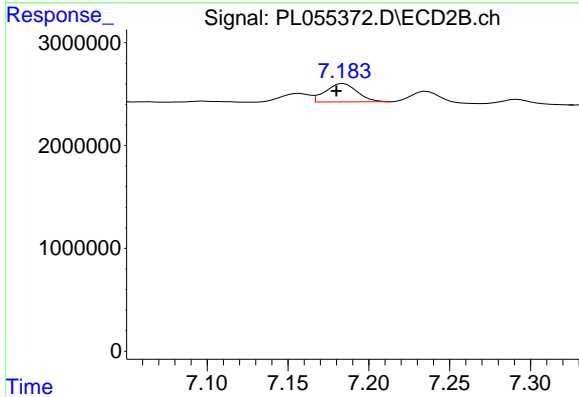
R.T.: 6.392 min
Delta R.T.: 0.003 min
Response: 7943366
Conc: 3.26 ng/ml



#17 4,4'-DDT

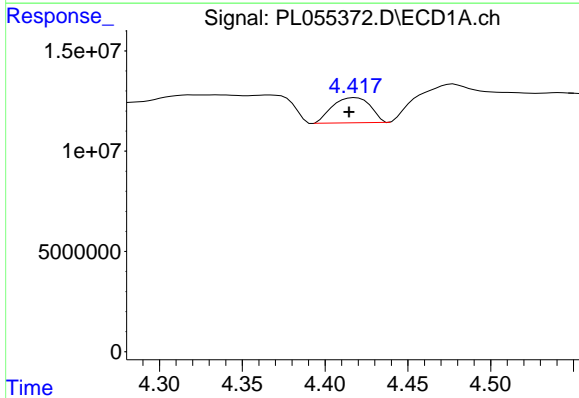
R.T.: 0.000 min
 Exp R.T.: 6.473 min
 Response: 0
 Conc: N.D.

Instrument :
 ECD_L
 ClientSampleId :



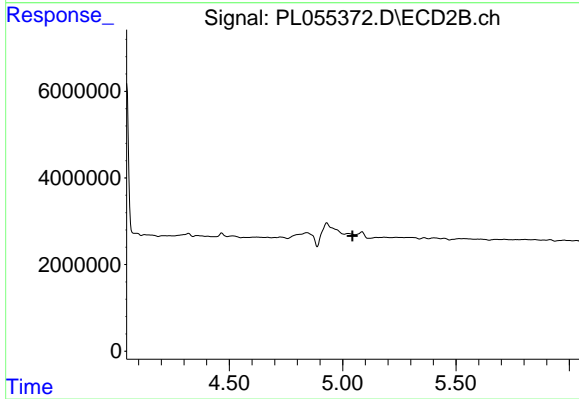
#17 4,4'-DDT

R.T.: 7.185 min
 Delta R.T.: 0.005 min
 Response: 2437346
 Conc: 1.24 ng/ml



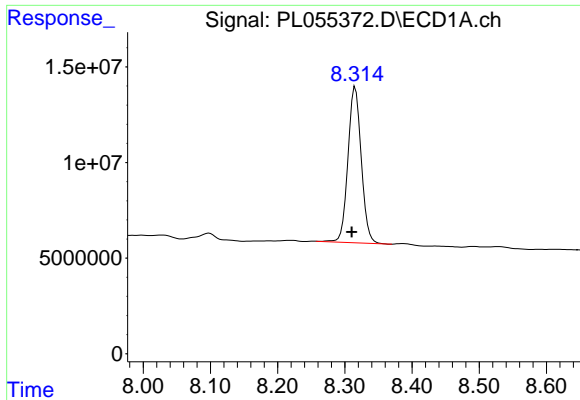
#23 Chlordane-1

R.T.: 4.418 min
 Delta R.T.: 0.004 min
 Response: 20035697
 Conc: 52.67 ng/ml



#23 Chlordane-1

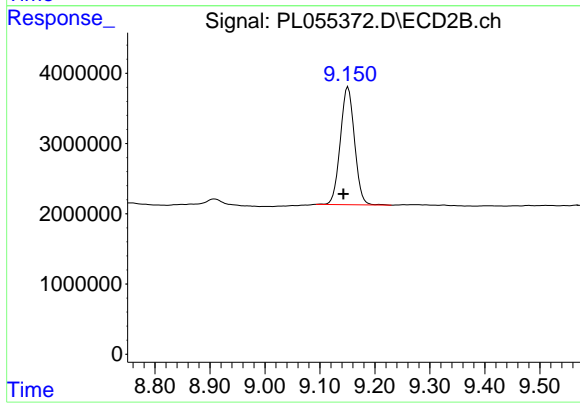
R.T.: 0.000 min
 Exp R.T.: 5.044 min
 Response: 0
 Conc: N.D.



#28 Decachlorobiphenyl

R.T.: 8.316 min
Delta R.T.: 0.005 min
Response: 111687845
Conc: 12.04 ng/ml

Instrument :
ECD_L
ClientSampleId :



#28 Decachlorobiphenyl

R.T.: 9.151 min
Delta R.T.: 0.008 min
Response: 30074715
Conc: 13.62 ng/ml