

Data Path : Z:\pestpcbsrv\HPCHEM1\ECD\_L\Data\PL123019\  
 Data File : PL055400.D  
 Signal(s) : Signal #1: ECD1A.ch Signal #2: ECD2B.ch  
 Acq On : 30 Dec 2019 22:15  
 Operator : SG\AJ  
 Sample : K6465-09  
 Misc :  
 ALS Vial : 34 Sample Multiplier: 1

Instrument :  
 ECD\_L  
 ClientSampleId :

Integration File signal 1: autoint1.e  
 Integration File signal 2: autoint2.e  
 Quant Time: Dec 31 00:58:19 2019  
 Quant Method : Z:\pestpcbsrv\HPCHEM1\ECD\_L\methods\PL122119.M  
 Quant Title : GC Extractables  
 QLast Update : Sat Dec 21 05:21:06 2019  
 Response via : Initial Calibration  
 Integrator: ChemStation

Volume Inj. : 1 µl  
 Signal #1 Phase : ZB-MR2 Signal #2 Phase: ZB-MR1  
 Signal #1 Info : 30M x 0.32mm x0.2 Signal #2 Info : 30M x 0.32mm x0.5µm

Compound	RT#1	RT#2	Resp#1	Resp#2	ng/ml	ng/ml
-----						
System Monitoring Compounds						
1) SA Tetrachlo...	3.535	4.049	129.9E6	37442082	12.353	14.171
28) SA Decachlor...	8.314	9.152	100.6E6	25352323	10.838	11.485
Target Compounds						
10) B gamma-Chl...	5.517f	6.163	75133715	5747334	5.157	2.165 #
11) B alpha-Chl...	5.553	6.238	18025160	17938876	1.280	6.841 #
12) B 4,4'-DDE	5.715	6.393	555.8E6	111.1E6	41.707	45.580
14) MA Endrin	6.107	0.000	15973795	0	1.257	N.D. #
16) A 4,4'-DDD	0.000	6.887	0	3630050	N.D.	1.909 #
17) MA 4,4'-DDT	6.474	7.185	83302157	20877110	8.275	10.637 #
23) Chlordane-1	0.000	5.045	0	1251304	N.D.	14.236 #
25) Chlordane-3	5.517f	6.163	75133715	5747334	59.279	17.859 #
26) Chlordane-4	5.553	6.238	18025160	17938876	17.220	46.670 #

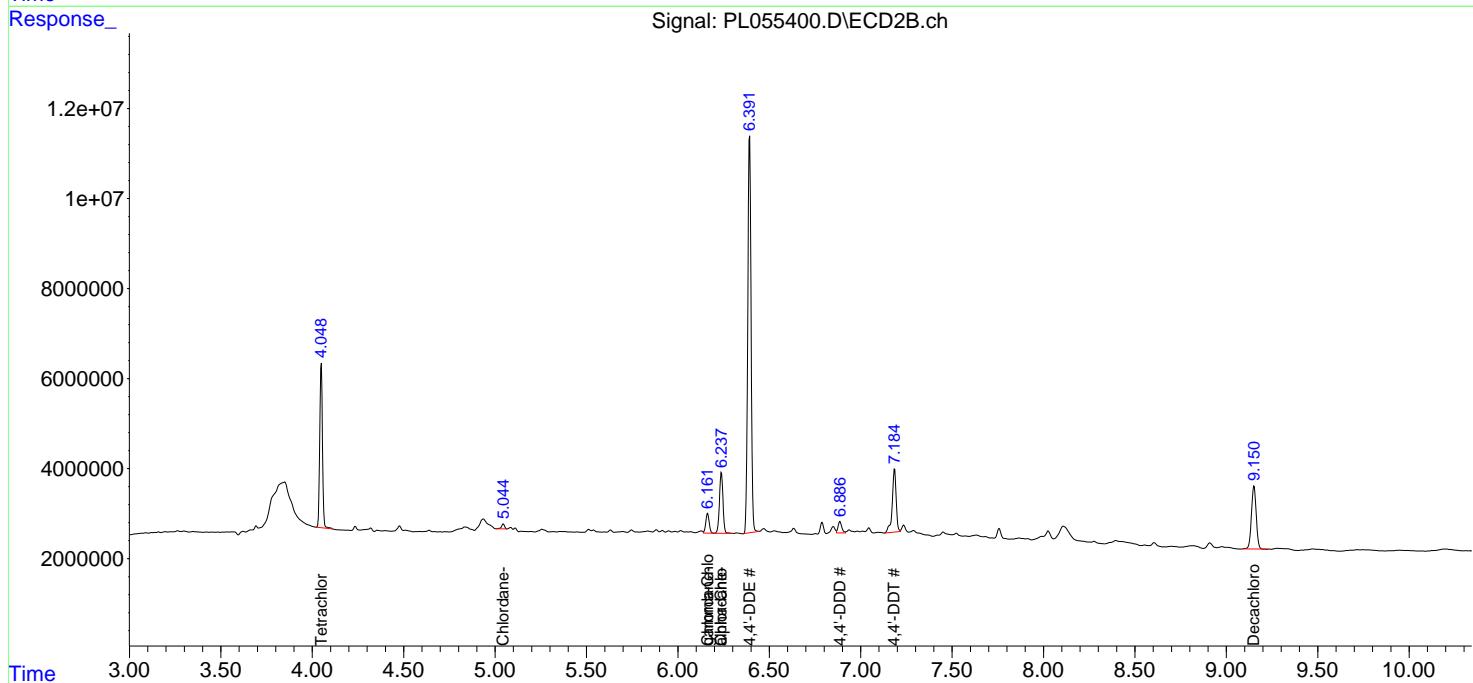
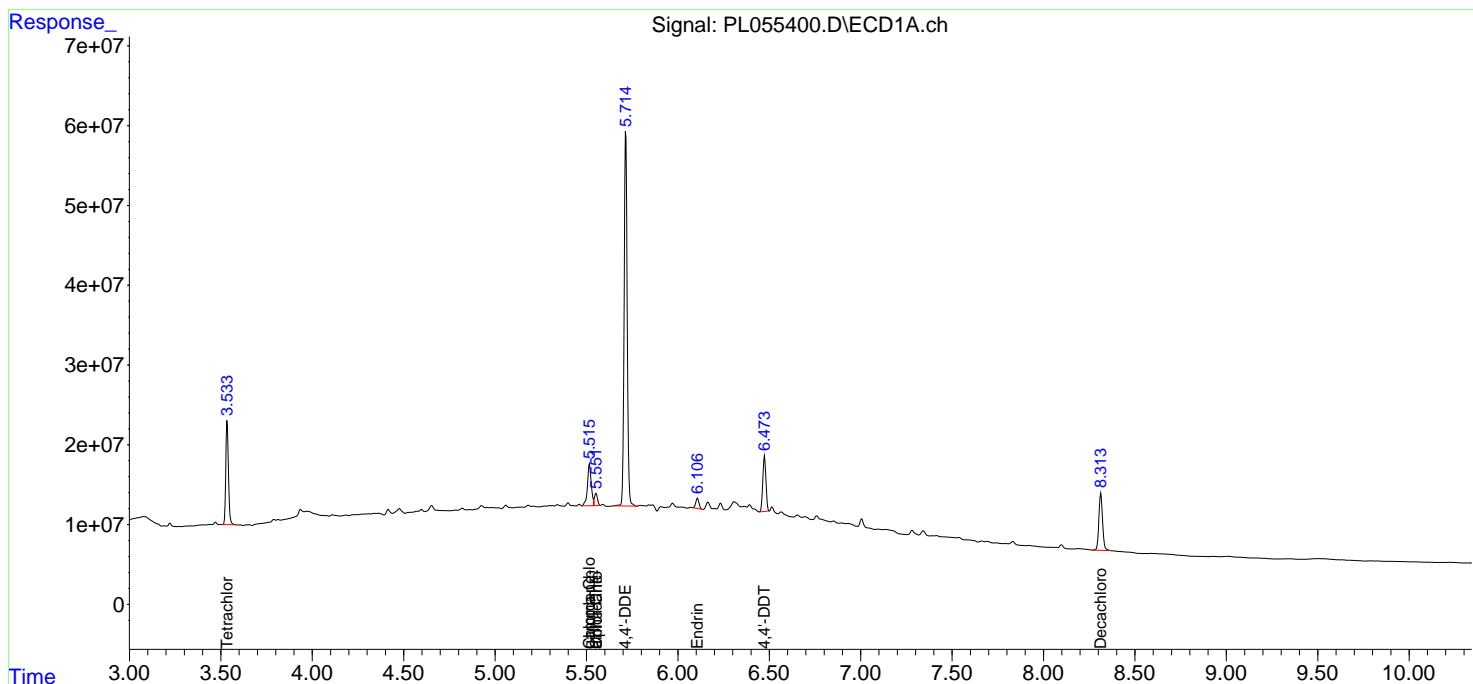
(f)=RT Delta > 1/2 Window (#)=Amounts differ by > 25% (m)=manual int.

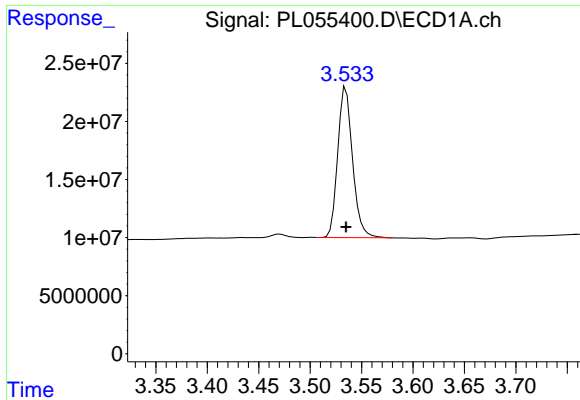
Data Path : Z:\pestpcbsrv\HPCHEM1\ECD\_L\Data\PL123019\  
 Data File : PL055400.D  
 Signal(s) : Signal #1: ECD1A.ch Signal #2: ECD2B.ch  
 Acq On : 30 Dec 2019 22:15  
 Operator : SG\AJ  
 Sample : K6465-09  
 Misc :  
 ALS Vial : 34 Sample Multiplier: 1

Instrument :  
 ECD\_L  
 ClientSampleId :

Integration File signal 1: autoint1.e  
 Integration File signal 2: autoint2.e  
 Quant Time: Dec 31 00:58:19 2019  
 Quant Method : Z:\pestpcbsrv\HPCHEM1\ECD\_L\methods\PL122119.M  
 Quant Title : GC Extractables  
 QLast Update : Sat Dec 21 05:21:06 2019  
 Response via : Initial Calibration  
 Integrator: ChemStation

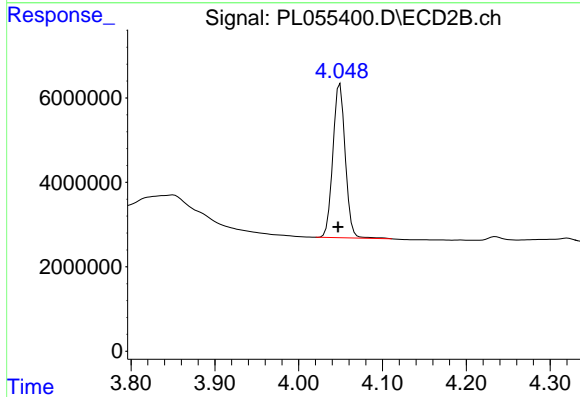
Volume Inj. : 1 µl  
 Signal #1 Phase : ZB-MR2 Signal #2 Phase: ZB-MR1  
 Signal #1 Info : 30M x 0.32mm x0.2 Signal #2 Info : 30M x 0.32mm x0.5µm



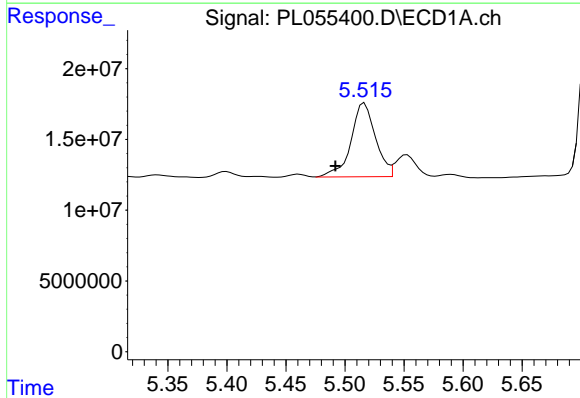


#1 Tetrachloro-m-xylene  
 R.T.: 3.535 min  
 Delta R.T.: 0.000 min  
 Response: 129906132  
 Conc: 12.35 ng/ml

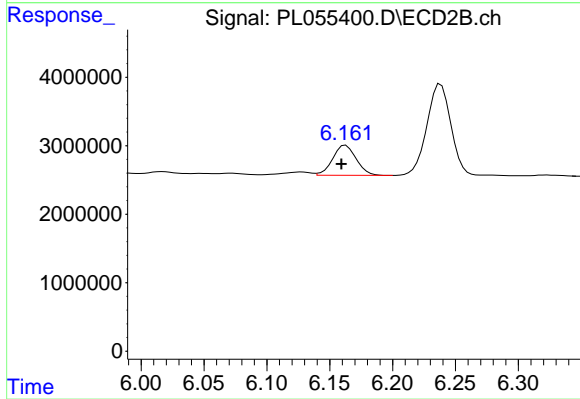
Instrument :  
 ECD\_L  
 ClientSampleId :



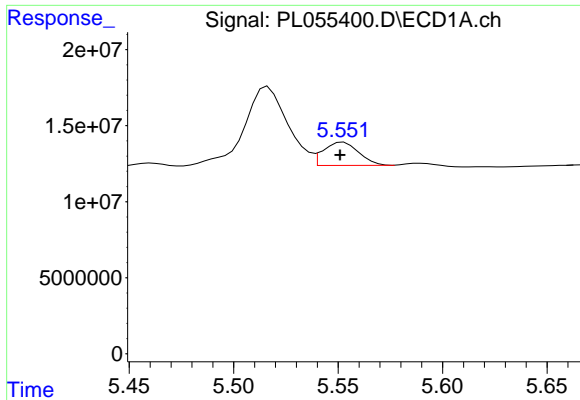
#1 Tetrachloro-m-xylene  
 R.T.: 4.049 min  
 Delta R.T.: 0.002 min  
 Response: 37442082  
 Conc: 14.17 ng/ml



#10 gamma-Chlordane  
 R.T.: 5.517 min  
 Delta R.T.: 0.025 min  
 Response: 75133715  
 Conc: 5.16 ng/ml

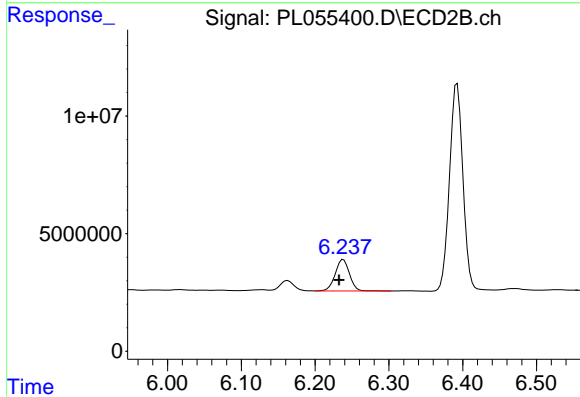


#10 gamma-Chlordane  
 R.T.: 6.163 min  
 Delta R.T.: 0.003 min  
 Response: 5747334  
 Conc: 2.17 ng/ml

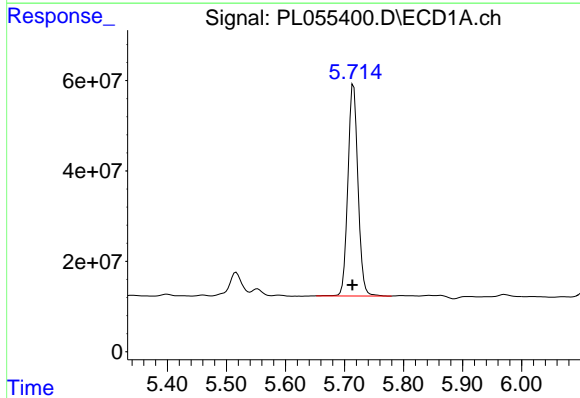


#11 alpha-Chlordane  
 R.T.: 5.553 min  
 Delta R.T.: 0.002 min  
 Response: 18025160  
 Conc: 1.28 ng/ml

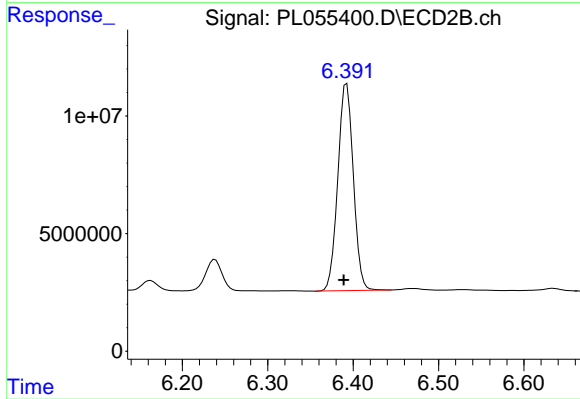
Instrument :  
 ECD\_L  
 ClientSampled :



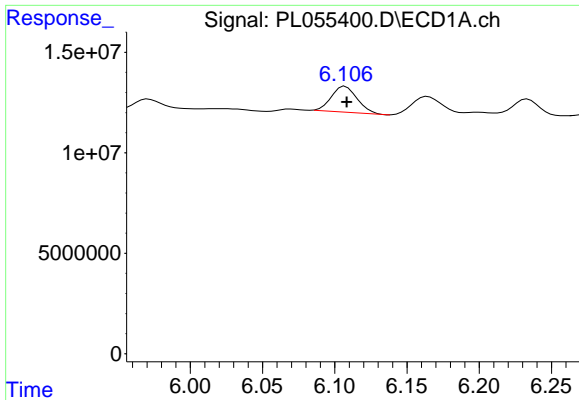
#11 alpha-Chlordane  
 R.T.: 6.238 min  
 Delta R.T.: 0.006 min  
 Response: 17938876  
 Conc: 6.84 ng/ml



#12 4,4'-DDE  
 R.T.: 5.715 min  
 Delta R.T.: 0.002 min  
 Response: 555797405  
 Conc: 41.71 ng/ml



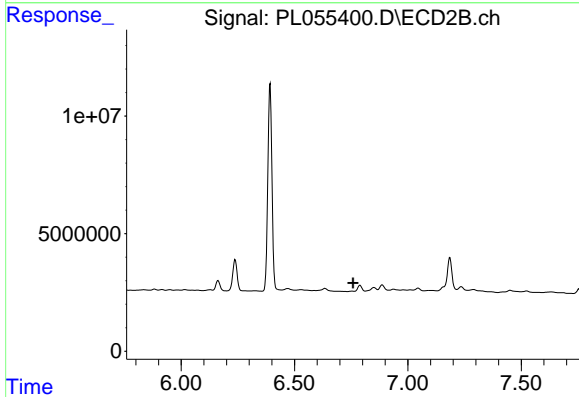
#12 4,4'-DDE  
 R.T.: 6.393 min  
 Delta R.T.: 0.004 min  
 Response: 111135738  
 Conc: 45.58 ng/ml



#14 Endrin

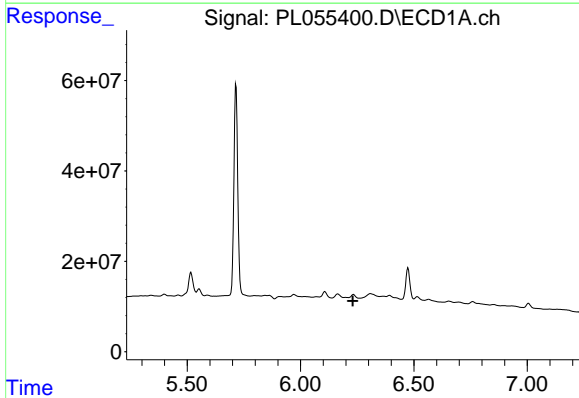
R.T.: 6.107 min  
 Delta R.T.: 0.000 min  
 Response: 15973795  
 Conc: 1.26 ng/ml

Instrument :  
 ECD\_L  
 ClientSampled :



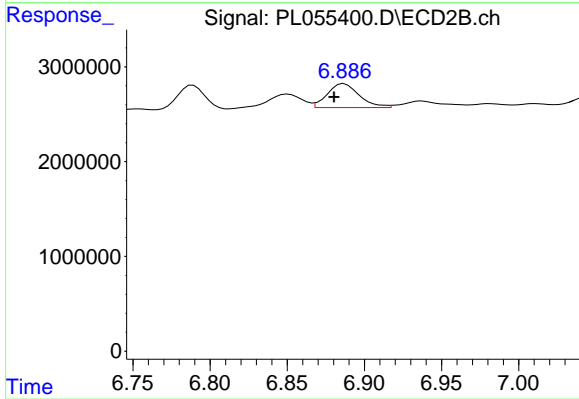
#14 Endrin

R.T.: 0.000 min  
 Exp R.T. : 6.759 min  
 Response: 0  
 Conc: N.D.



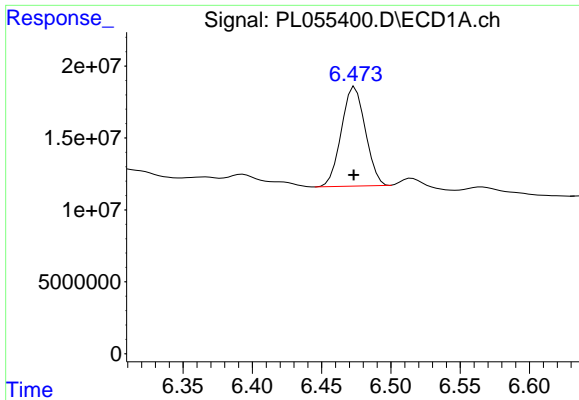
#16 4,4'-DDD

R.T.: 0.000 min  
 Exp R.T. : 6.231 min  
 Response: 0  
 Conc: N.D.



#16 4,4'-DDD

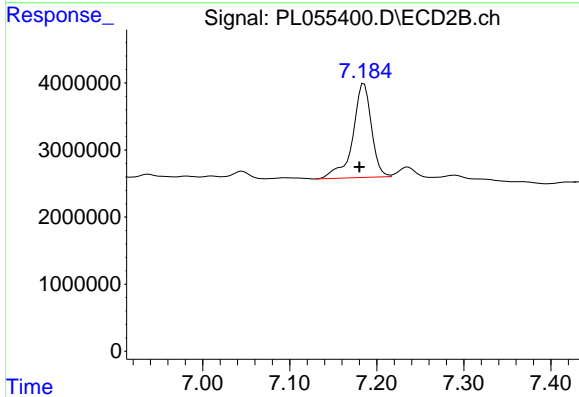
R.T.: 6.887 min  
 Delta R.T.: 0.006 min  
 Response: 3630050  
 Conc: 1.91 ng/ml



#17 4,4'-DDT

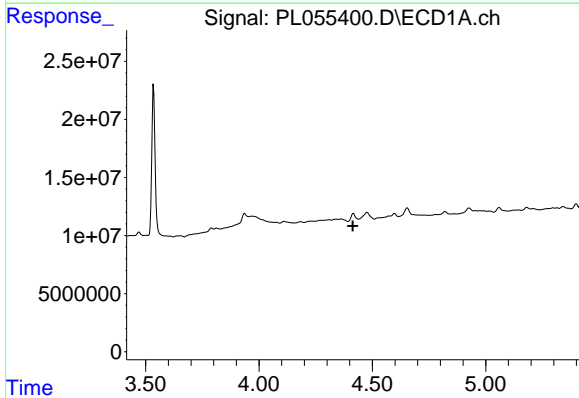
R.T.: 6.474 min  
 Delta R.T.: 0.000 min  
 Response: 83302157  
 Conc: 8.27 ng/ml

Instrument :  
 ECD\_L  
 ClientSampled :



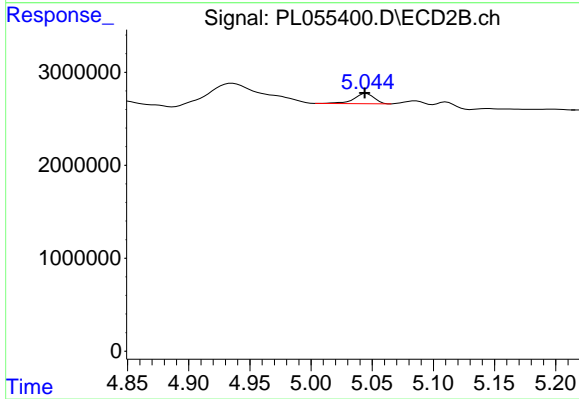
#17 4,4'-DDT

R.T.: 7.185 min  
 Delta R.T.: 0.005 min  
 Response: 20877110  
 Conc: 10.64 ng/ml



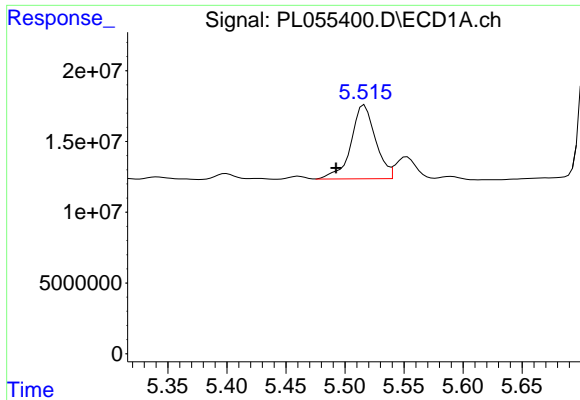
#23 Chlordane-1

R.T.: 0.000 min  
 Exp R.T. : 4.415 min  
 Response: 0  
 Conc: N.D.



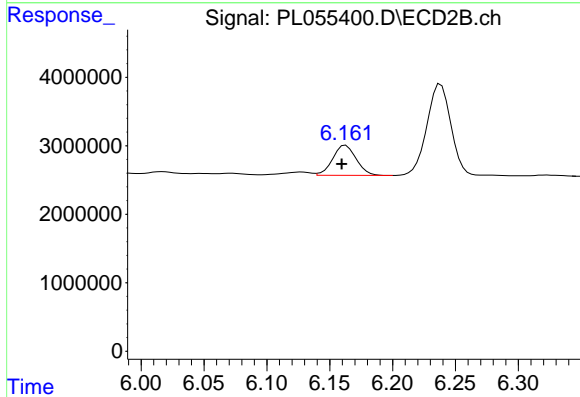
#23 Chlordane-1

R.T.: 5.045 min  
 Delta R.T.: 0.002 min  
 Response: 1251304  
 Conc: 14.24 ng/ml

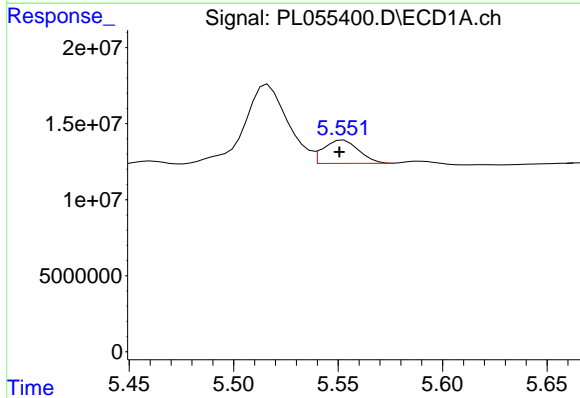


#25 Chlordane-3  
 R.T.: 5.517 min  
 Delta R.T.: 0.024 min  
 Response: 75133715  
 Conc: 59.28 ng/ml

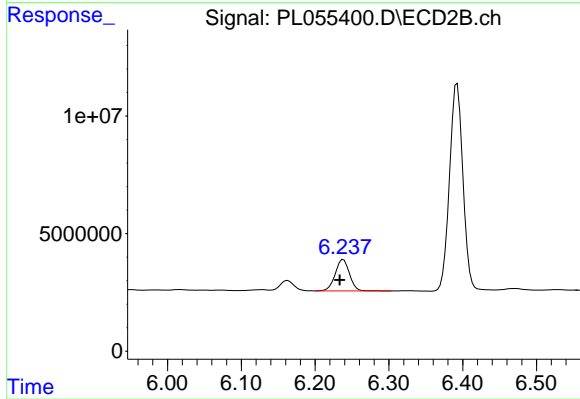
Instrument :  
 ECD\_L  
 ClientSampleId :



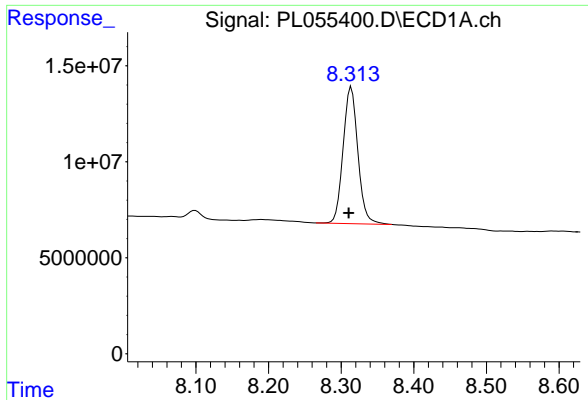
#25 Chlordane-3  
 R.T.: 6.163 min  
 Delta R.T.: 0.003 min  
 Response: 5747334  
 Conc: 17.86 ng/ml



#26 Chlordane-4  
 R.T.: 5.553 min  
 Delta R.T.: 0.002 min  
 Response: 18025160  
 Conc: 17.22 ng/ml



#26 Chlordane-4  
 R.T.: 6.238 min  
 Delta R.T.: 0.005 min  
 Response: 17938876  
 Conc: 46.67 ng/ml



#28 Decachlorobiphenyl

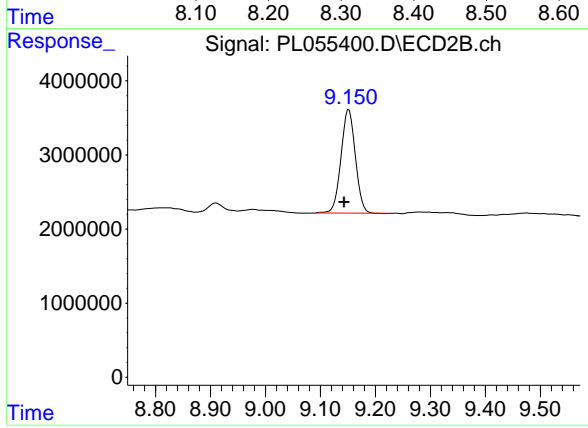
R.T.: 8.314 min

Delta R.T.: 0.003 min

Response: 100567297

Conc: 10.84 ng/ml

Instrument :  
ECD\_L  
ClientSampled :



#28 Decachlorobiphenyl

R.T.: 9.152 min

Delta R.T.: 0.009 min

Response: 25352323

Conc: 11.48 ng/ml