

Data Path : Z:\pestpcbsrv\HPCHEM1\ECD\_L\Data\PL123019\  
 Data File : PL055392.D  
 Signal(s) : Signal #1: ECD1A.ch Signal #2: ECD2B.ch  
 Acq On : 30 Dec 2019 20:23  
 Operator : SG\AJ  
 Sample : K6465-03  
 Misc :  
 ALS Vial : 26 Sample Multiplier: 1

**Instrument :**  
 ECD\_L  
**ClientSampleId :**  
 GP-10-(1-3)

**Manual Integrations**  
**APPROVED**  
 mohammad  
 12/31/2019 11:59:28 AM

Integration File signal 1: autoint1.e  
 Integration File signal 2: autoint2.e  
 Quant Time: Dec 31 00:56:42 2019  
 Quant Method : Z:\pestpcbsrv\HPCHEM1\ECD\_L\methods\PL122119.M  
 Quant Title : GC Extractables  
 QLast Update : Sat Dec 21 05:21:06 2019  
 Response via : Initial Calibration  
 Integrator: ChemStation

Volume Inj. : 1 µl  
 Signal #1 Phase : ZB-MR2 Signal #2 Phase: ZB-MR1  
 Signal #1 Info : 30M x 0.32mm x0.2 Signal #2 Info : 30M x 0.32mm x0.5µm

Compound	RT#1	RT#2	Resp#1	Resp#2	ng/ml	ng/ml
-----						
System Monitoring Compounds						
1) SA Tetrachlo...	3.535	4.050	128.7E6	35588297	12.236	13.469
28) SA Decachlor...	8.314	9.151	110.2E6	29055391	11.880	13.162
Target Compounds						
12) B 4,4'-DDE	5.715	6.393	405.0E6	79034564	30.393	32.414
16) A 4,4'-DDD	6.231	6.886	10845485	2954653	1.129m	1.554 #
17) MA 4,4'-DDT	6.473	7.184	74122765	17341383	7.363m	8.836
-----						

(f)=RT Delta > 1/2 Window (#)=Amounts differ by > 25% (m)=manual int.

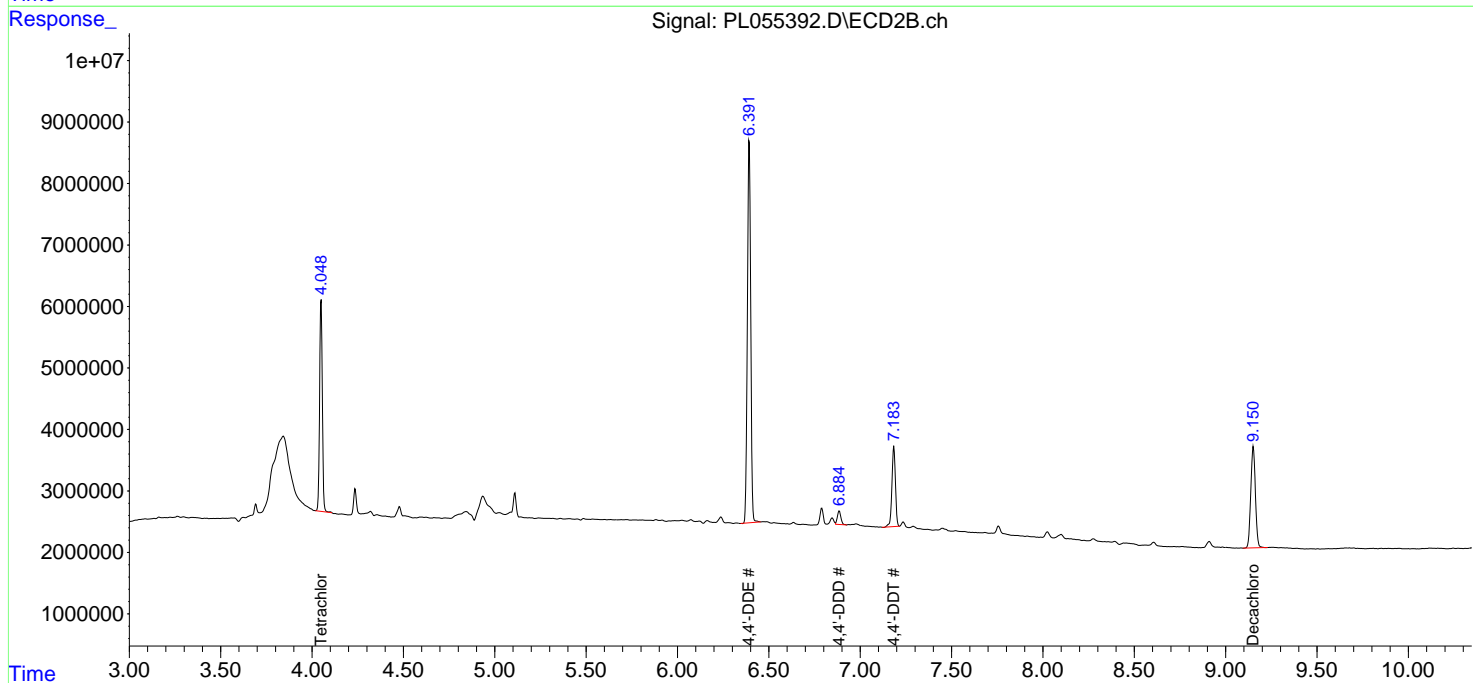
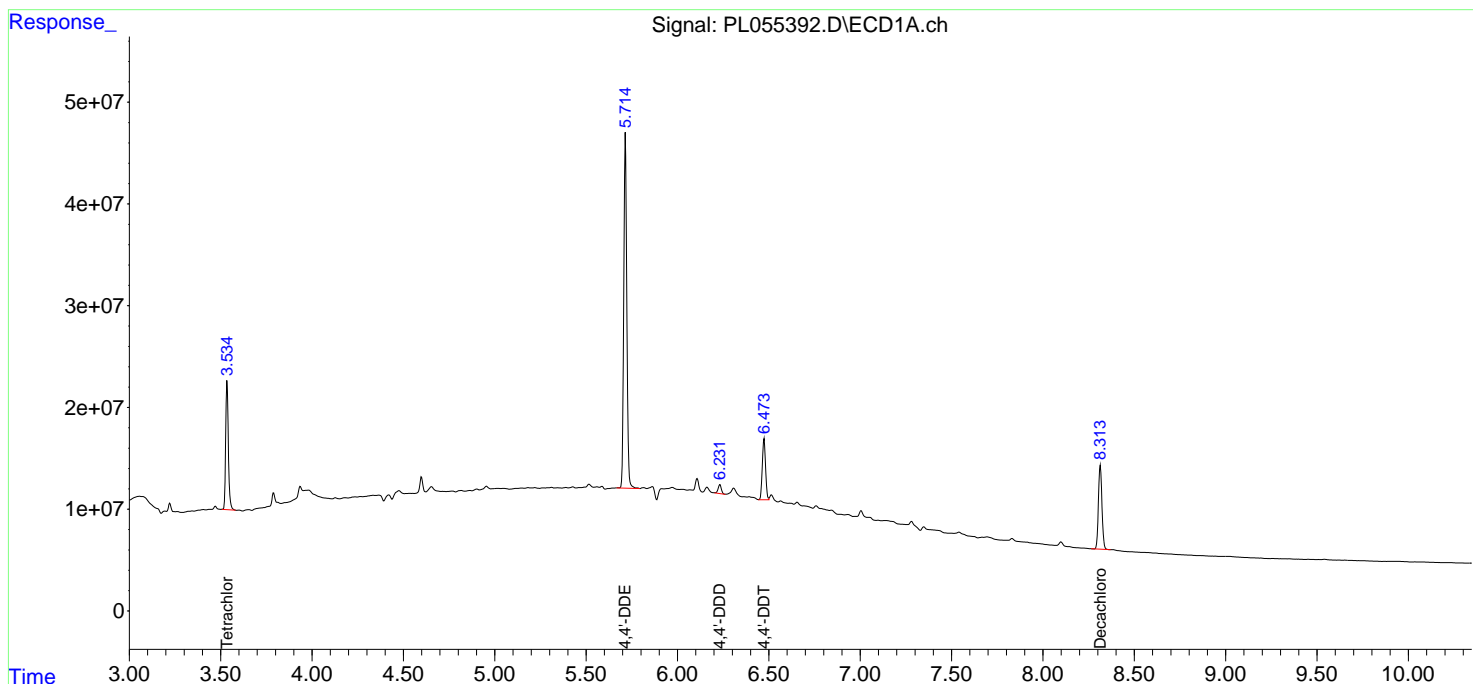
Data Path : Z:\pestpcbsrv\HPCHEM1\ECD\_L\Data\PL123019\  
 Data File : PL055392.D  
 Signal(s) : Signal #1: ECD1A.ch Signal #2: ECD2B.ch  
 Acq On : 30 Dec 2019 20:23  
 Operator : SG\AJ  
 Sample : K6465-03  
 Misc :  
 ALS Vial : 26 Sample Multiplier: 1

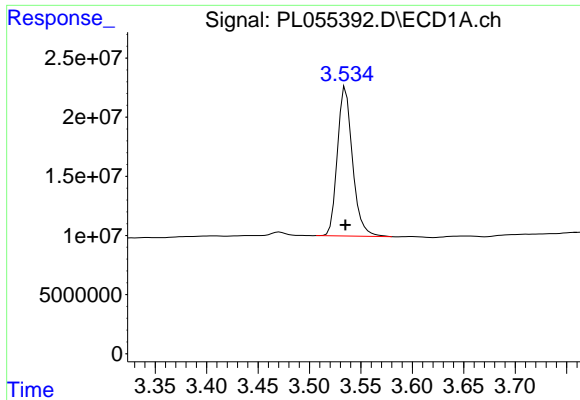
**Instrument :**  
 ECD\_L  
**ClientSampled :**  
 GP-10-(1-3)

**Manual Integrations**  
**APPROVED**  
 mohammad  
 12/31/2019 11:59:28 AM

Integration File signal 1: autoint1.e  
 Integration File signal 2: autoint2.e  
 Quant Time: Dec 31 00:56:42 2019  
 Quant Method : Z:\pestpcbsrv\HPCHEM1\ECD\_L\methods\PL122119.M  
 Quant Title : GC Extractables  
 QLast Update : Sat Dec 21 05:21:06 2019  
 Response via : Initial Calibration  
 Integrator: ChemStation

Volume Inj. : 1 µl  
 Signal #1 Phase : ZB-MR2 Signal #2 Phase: ZB-MR1  
 Signal #1 Info : 30M x 0.32mm x0.2 Signal #2 Info : 30M x 0.32mm x0.5µm

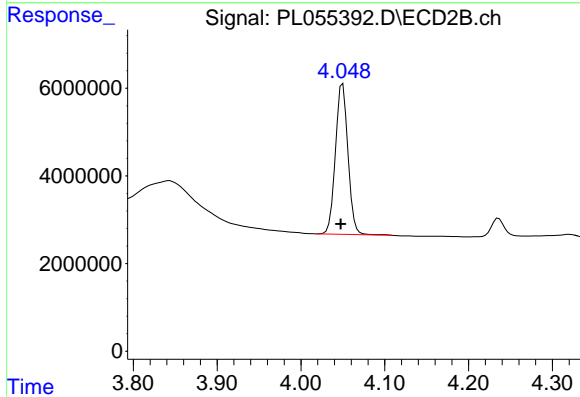




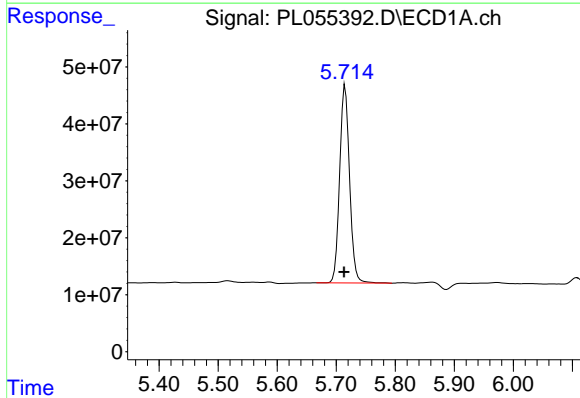
#1 Tetrachloro-m-xylene  
 R.T.: 3.535 min  
 Delta R.T.: 0.000 min  
 Response: 128675280  
 Conc: 12.24 ng/ml

Instrument :  
 ECD\_L  
 ClientSampleId :  
 GP-10-(1-3)

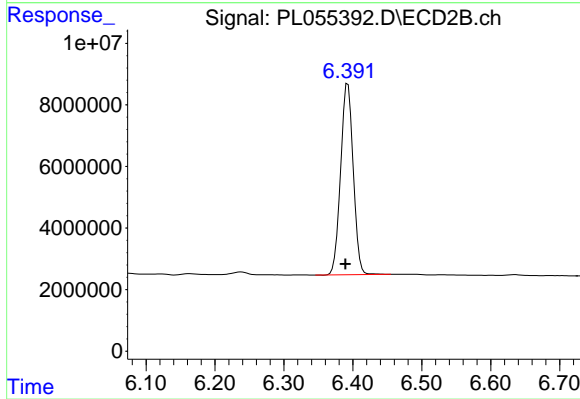
Manual Integrations  
 APPROVED  
 mohammad  
 12/31/2019 11:59:28 AM



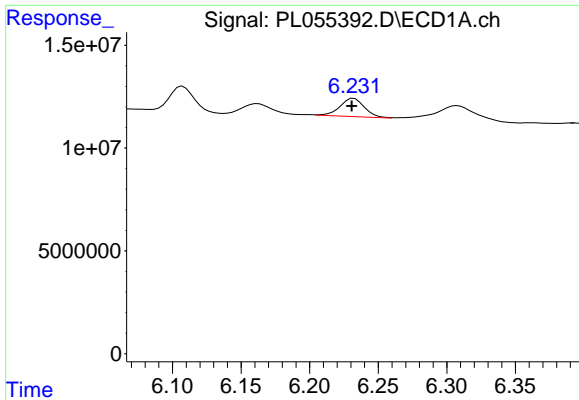
#1 Tetrachloro-m-xylene  
 R.T.: 4.050 min  
 Delta R.T.: 0.003 min  
 Response: 35588297  
 Conc: 13.47 ng/ml



#12 4,4'-DDE  
 R.T.: 5.715 min  
 Delta R.T.: 0.002 min  
 Response: 405023467  
 Conc: 30.39 ng/ml



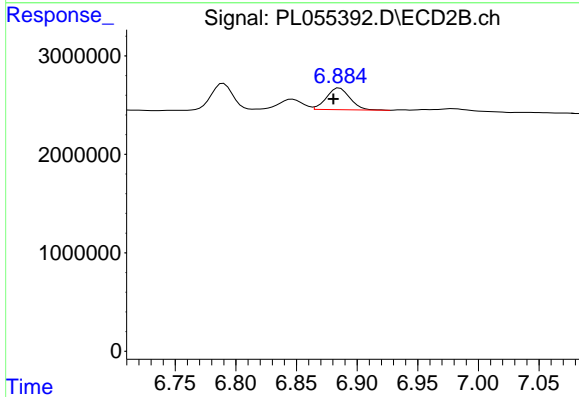
#12 4,4'-DDE  
 R.T.: 6.393 min  
 Delta R.T.: 0.004 min  
 Response: 79034564  
 Conc: 32.41 ng/ml



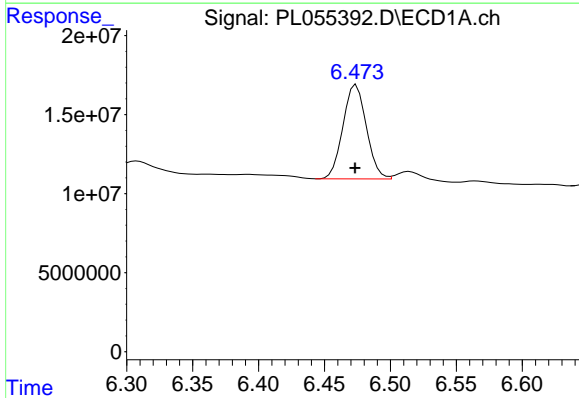
#16 4,4'-DDD  
 R.T.: 6.231 min  
 Delta R.T.: 0.000 min  
 Response: 10845485  
 Conc: 1.13 ng/ml m

**Instrument :**  
 ECD\_L  
**ClientSampled :**  
 GP-10-(1-3)

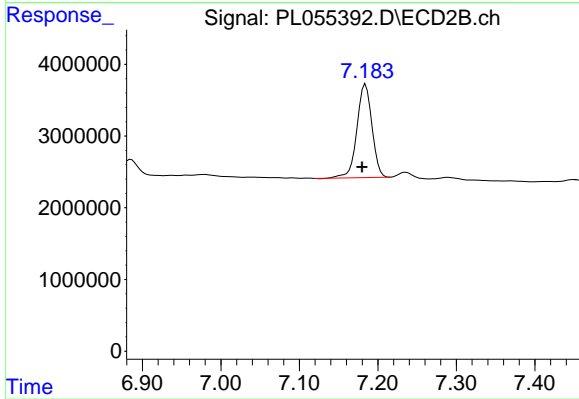
**Manual Integrations**  
**APPROVED**  
 mohammad  
 12/31/2019 11:59:28 AM



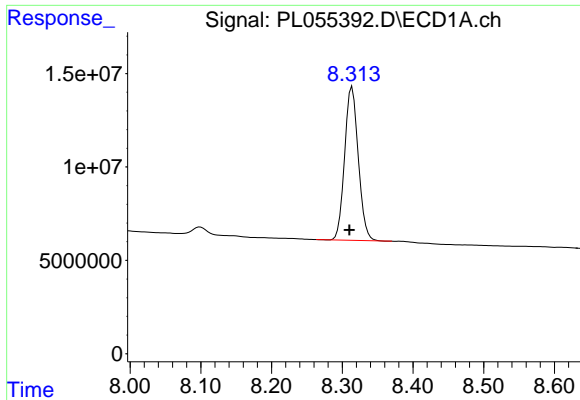
#16 4,4'-DDD  
 R.T.: 6.886 min  
 Delta R.T.: 0.005 min  
 Response: 2954653  
 Conc: 1.55 ng/ml



#17 4,4'-DDT  
 R.T.: 6.473 min  
 Delta R.T.: 0.000 min  
 Response: 74122765  
 Conc: 7.36 ng/ml m



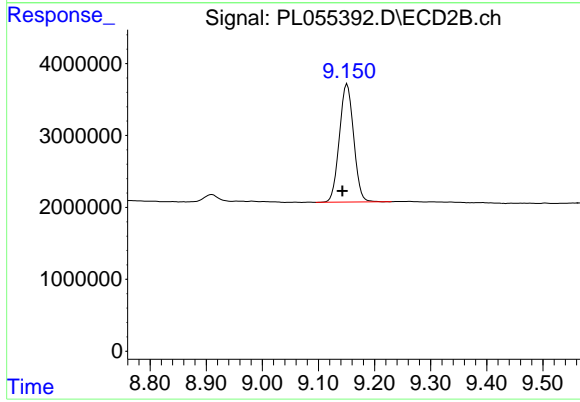
#17 4,4'-DDT  
 R.T.: 7.184 min  
 Delta R.T.: 0.004 min  
 Response: 17341383  
 Conc: 8.84 ng/ml



#28 Decachlorobiphenyl  
R.T.: 8.314 min  
Delta R.T.: 0.003 min  
Response: 110228214  
Conc: 11.88 ng/ml

Instrument :  
ECD\_L  
ClientSampleId :  
GP-10-(1-3)

Manual Integrations  
APPROVED  
mohammad  
12/31/2019 11:59:28 AM



#28 Decachlorobiphenyl  
R.T.: 9.151 min  
Delta R.T.: 0.008 min  
Response: 29055391  
Conc: 13.16 ng/ml