

Data Path : Z:\pestpcbsrv\HPCHEM1\ECD\_L\Data\PL123021\  
 Data File : PL071729.D  
 Signal(s) : Signal #1: ECD1A.ch Signal #2: ECD2B.ch  
 Acq On : 30 Dec 2021 08:39  
 Operator : AR\AJ  
 Sample : HEXANE  
 Misc :  
 ALS Vial : 1 Sample Multiplier: 1

Instrument :  
 ECD\_L  
 ClientSampleId :

Integration File signal 1: autoint1.e  
 Integration File signal 2: autoint2.e  
 Quant Time: Dec 31 05:22:27 2021  
 Quant Method : Z:\pestpcbsrv\HPCHEM1\ECD\_L\methods\PL122721.M  
 Quant Title : GC Extractables  
 QLast Update : Mon Dec 27 14:06:28 2021  
 Response via : Initial Calibration  
 Integrator: ChemStation

Volume Inj. : 1 µl  
 Signal #1 Phase : ZB-MR2 Signal #2 Phase: ZB-MR1  
 Signal #1 Info : 30M x 0.32mm x0.2 Signal #2 Info : 30M x 0.32mm x0.5µm

	Compound	RT#1	RT#2	Resp#1	Resp#2	ng/ml	ng/ml
-----							
System Monitoring Compounds							
1)	SA Tetrachlo...	4.562	0.000	98960	0	0.153	N.D. #
2)	SA Decachlor...	0.000	11.407f	0	47129	N.D.	0.038 #
Target Compounds							
2)	A alpha-BHC	0.000	6.087	0	27159	N.D.	0.011 #
4)	MA Heptachlor	0.000	7.149f	0	50168	N.D.	0.022 #
5)	MB Aldrin	6.450f	0.000	111547	0	0.125	N.D. #
6)	B beta-BHC	6.049f	6.737	190222	57848	0.501	0.056 #
8)	B Heptachlo...	0.000	7.967	0	3041633	N.D.	1.546 #
9)	A Endosulfan I	7.406	8.352	924395	1777908	1.208	1.044
10)	B gamma-Chl...	0.000	8.228	0	3818574	N.D.	1.958 #
11)	B alpha-Chl...	7.329f	0.000	425256	0	0.501	N.D. #
15)	B Endosulfa...	0.000	9.144	0	9939895	N.D.	6.685 #
16)	A 4,4'-DDD	8.161	9.041	35782	2369708	0.060	1.825 #
17)	MA 4,4'-DDT	8.402	9.364	849211	3003740	1.317	2.200 #
18)	B Endrin al...	0.000	9.247f	0	1028208	N.D.	0.889 #
19)	B Endosulfa...	0.000	9.495	0	73758	N.D.	0.052 #
20)	A Methoxychlor	8.997	0.000	406922	0	1.092	N.D. #
21)	B Endrin ke...	9.214	9.993	568760	239202	0.723	0.176 #
22)	Mirex	0.000	10.451	0	4299956	N.D.	3.957 #
24)	Chlordane-2	6.553f	0.000	1061152	0	32.611	N.D. #
25)	Chlordane-3	0.000	8.228	0	3818574	N.D.	13.819 #
26)	Chlordane-4	7.329	0.000	425256	0	4.608	N.D. #

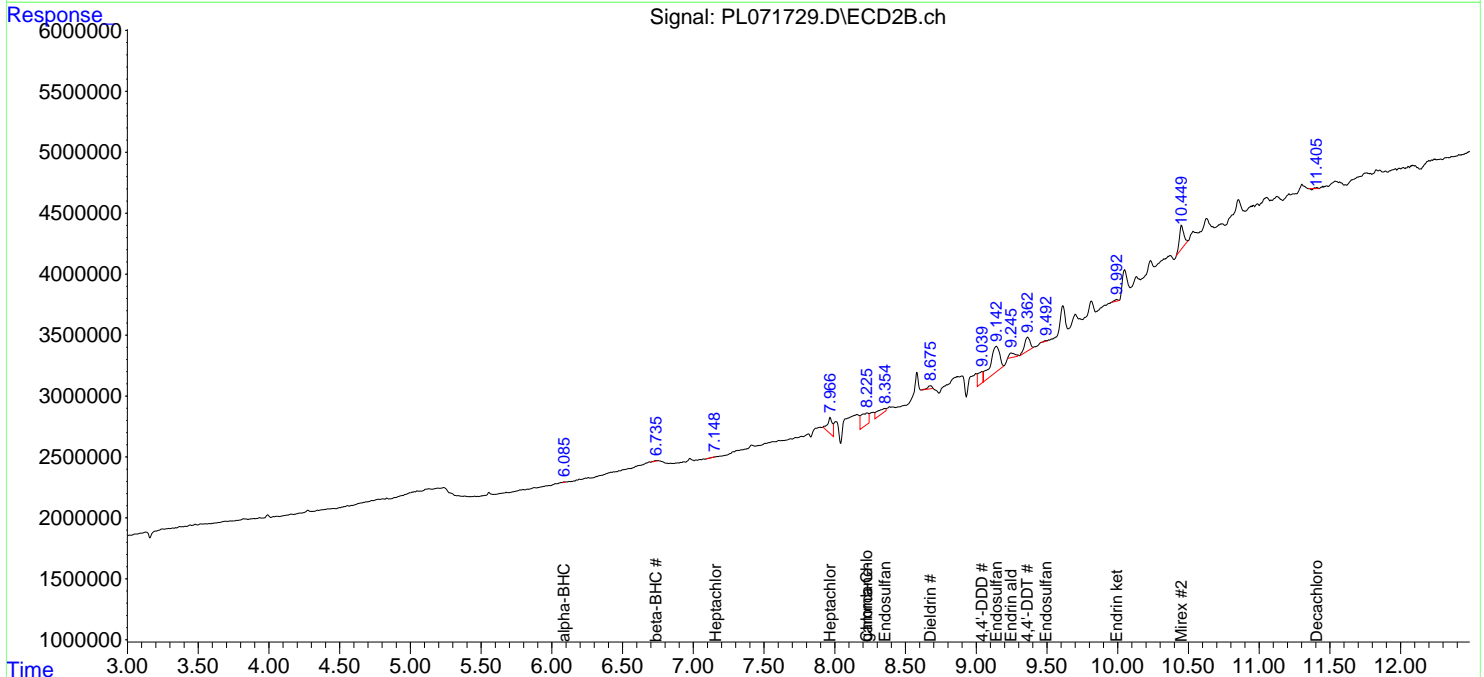
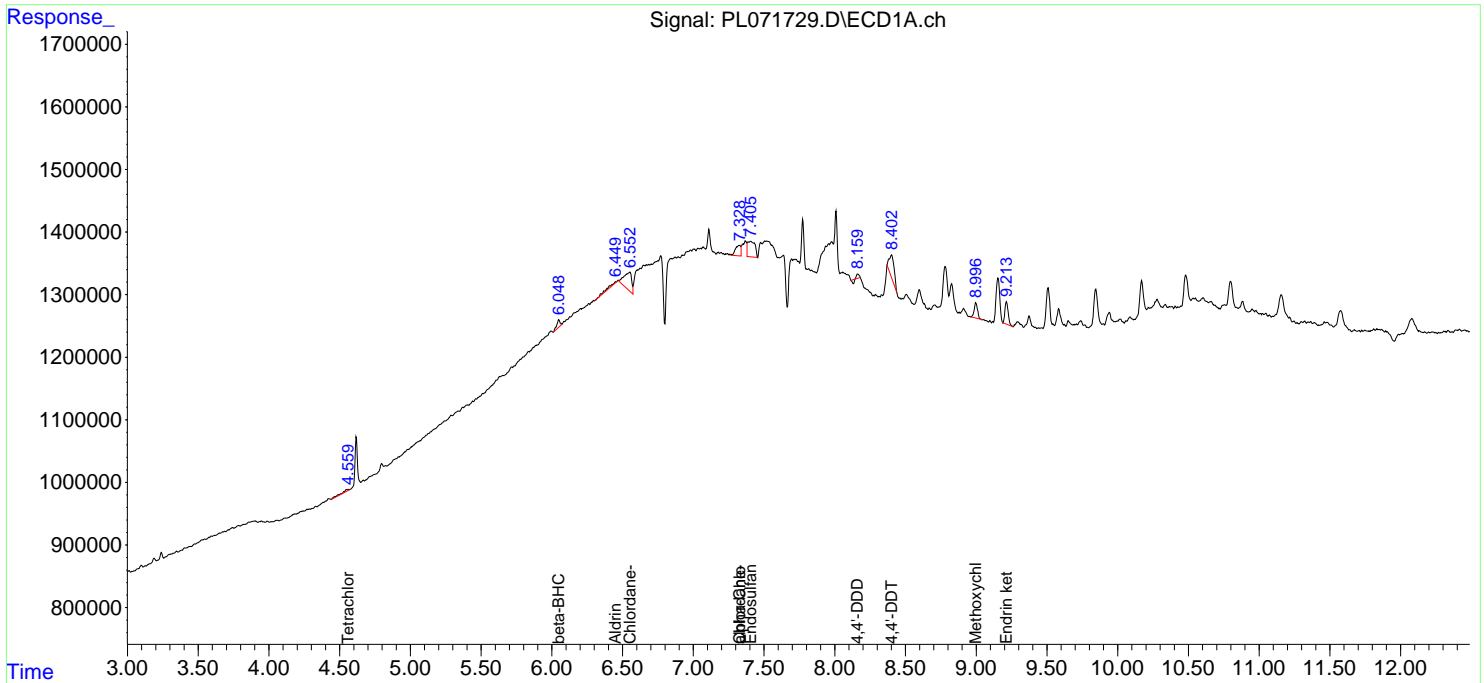
(f)=RT Delta > 1/2 Window (#)=Amounts differ by > 25% (m)=manual int.

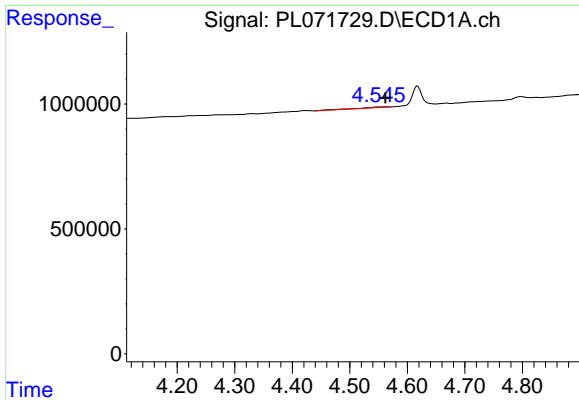
Data Path : Z:\pestpcbsrv\HPCHEM1\ECD\_L\Data\PL123021\  
 Data File : PL071729.D  
 Signal(s) : Signal #1: ECD1A.ch Signal #2: ECD2B.ch  
 Acq On : 30 Dec 2021 08:39  
 Operator : AR\AJ  
 Sample : HEXANE  
 Misc :  
 ALS Vial : 1 Sample Multiplier: 1

Instrument :  
 ECD\_L  
 ClientSampleId :

Integration File signal 1: autoint1.e  
 Integration File signal 2: autoint2.e  
 Quant Time: Dec 31 05:22:27 2021  
 Quant Method : Z:\pestpcbsrv\HPCHEM1\ECD\_L\methods\PL122721.M  
 Quant Title : GC Extractables  
 QLast Update : Mon Dec 27 14:06:28 2021  
 Response via : Initial Calibration  
 Integrator: ChemStation

Volume Inj. : 1 µl  
 Signal #1 Phase : ZB-MR2 Signal #2 Phase: ZB-MR1  
 Signal #1 Info : 30M x 0.32mm x0.2 Signal #2 Info : 30M x 0.32mm x0.5µm

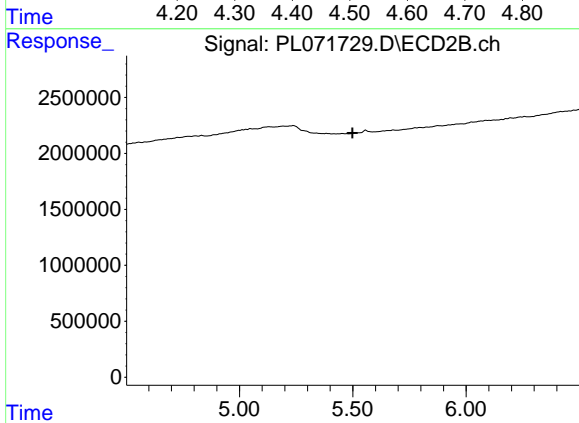




#1 Tetrachloro-m-xylene

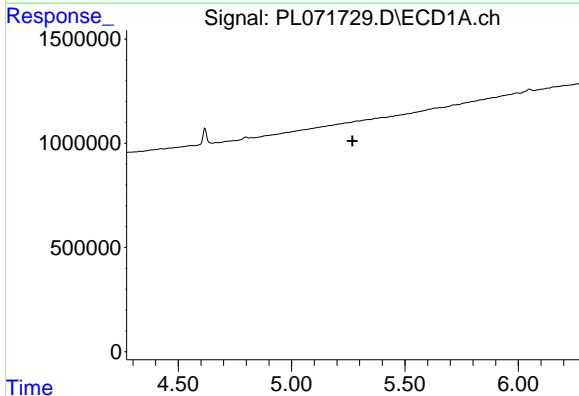
R.T.: 4.562 min  
 Delta R.T.: 0.000 min  
 Response: 98960  
 Conc: 0.15 ng/ml

Instrument :  
 ECD\_L  
 ClientSampleId :



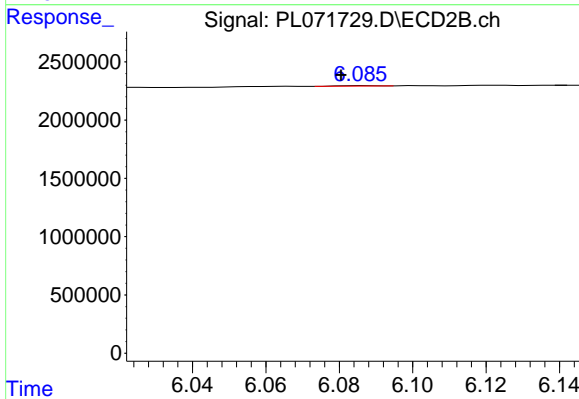
#1 Tetrachloro-m-xylene

R.T.: 0.000 min  
 Exp R.T. : 5.499 min  
 Response: 0  
 Conc: N.D.



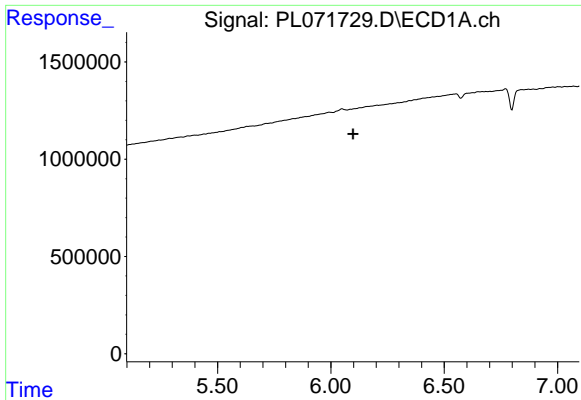
#2 alpha-BHC

R.T.: 0.000 min  
 Exp R.T. : 5.269 min  
 Response: 0  
 Conc: N.D.



#2 alpha-BHC

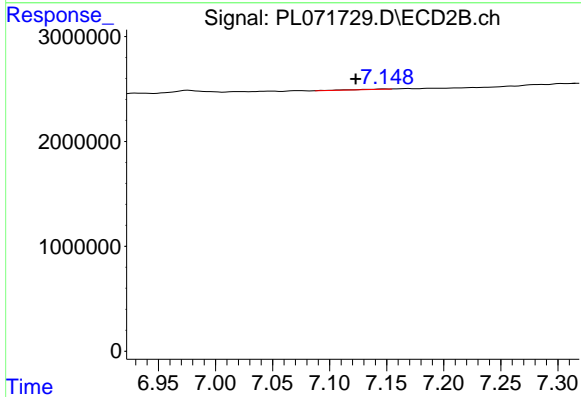
R.T.: 6.087 min  
 Delta R.T.: 0.006 min  
 Response: 27159  
 Conc: 0.01 ng/ml



#4 Heptachlor

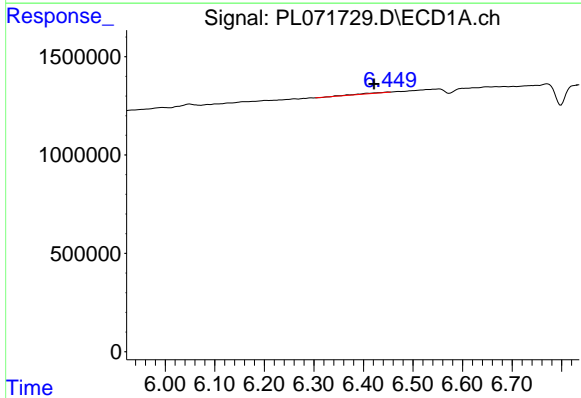
R.T.: 0.000 min  
 Exp R.T.: 6.098 min  
 Response: 0  
 Conc: N.D.

Instrument :  
 ECD\_L  
 ClientSampleId :



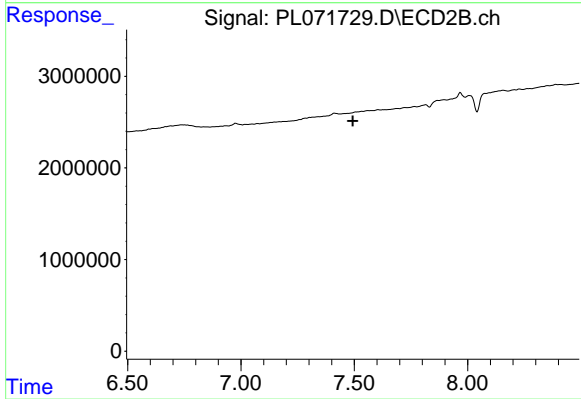
#4 Heptachlor

R.T.: 7.149 min  
 Delta R.T.: 0.026 min  
 Response: 50168  
 Conc: 0.02 ng/ml



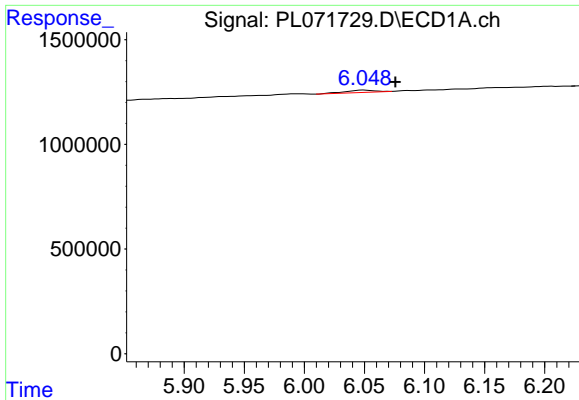
#5 Aldrin

R.T.: 6.450 min  
 Delta R.T.: 0.028 min  
 Response: 111547  
 Conc: 0.12 ng/ml



#5 Aldrin

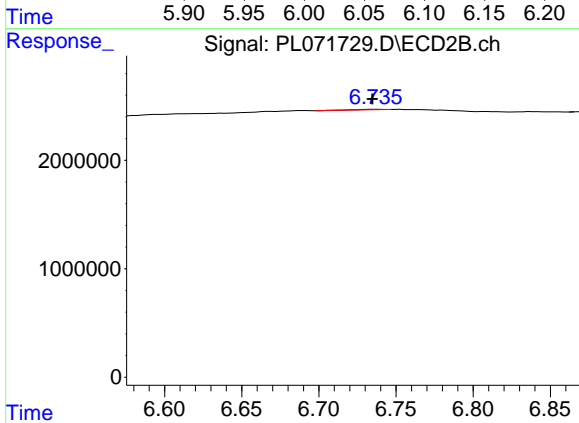
R.T.: 0.000 min  
 Exp R.T.: 7.493 min  
 Response: 0  
 Conc: N.D.



#6 beta-BHC

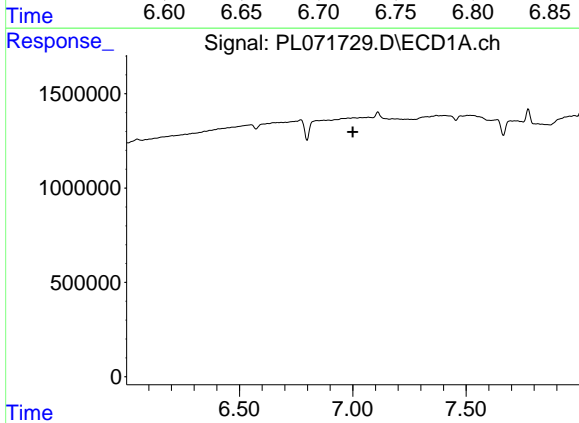
R.T.: 6.049 min  
 Delta R.T.: -0.026 min  
 Response: 190222  
 Conc: 0.50 ng/ml

Instrument :  
 ECD\_L  
 ClientSampleId :



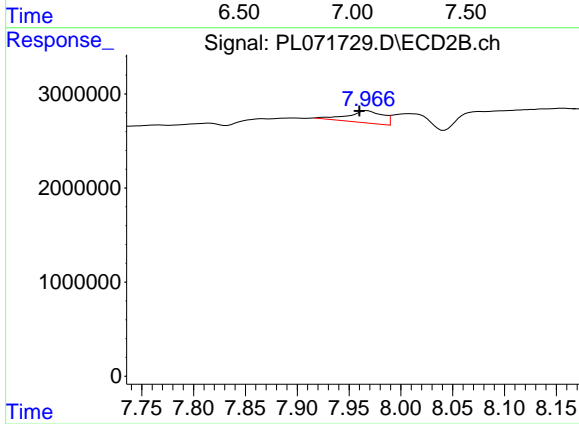
#6 beta-BHC

R.T.: 6.737 min  
 Delta R.T.: 0.002 min  
 Response: 57848  
 Conc: 0.06 ng/ml



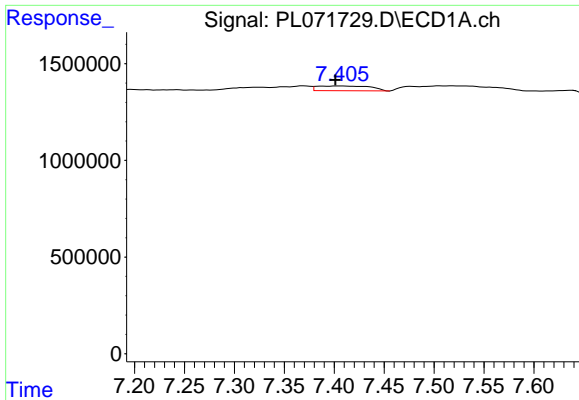
#8 Heptachlor epoxide

R.T.: 0.000 min  
 Exp R.T. : 6.999 min  
 Response: 0  
 Conc: N.D.



#8 Heptachlor epoxide

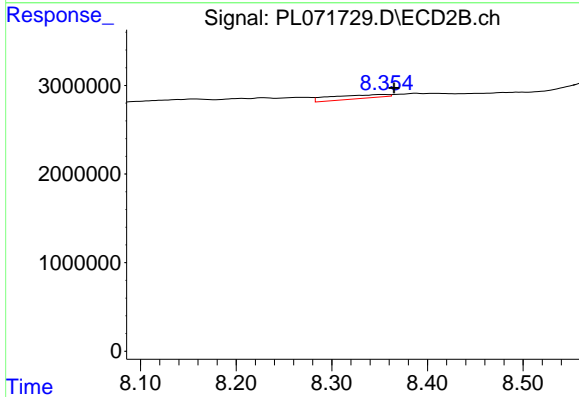
R.T.: 7.967 min  
 Delta R.T.: 0.007 min  
 Response: 3041633  
 Conc: 1.55 ng/ml



#9 Endosulfan I

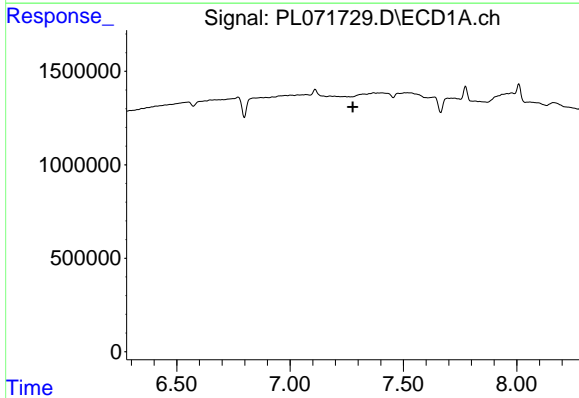
R.T.: 7.406 min  
 Delta R.T.: 0.005 min  
 Response: 924395  
 Conc: 1.21 ng/ml

Instrument :  
 ECD\_L  
 ClientSampleId :



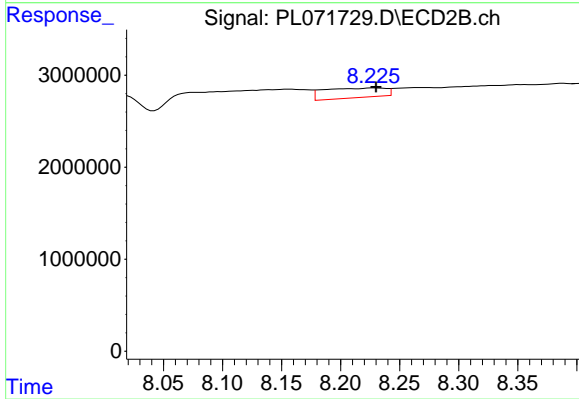
#9 Endosulfan I

R.T.: 8.352 min  
 Delta R.T.: -0.013 min  
 Response: 1777908  
 Conc: 1.04 ng/ml



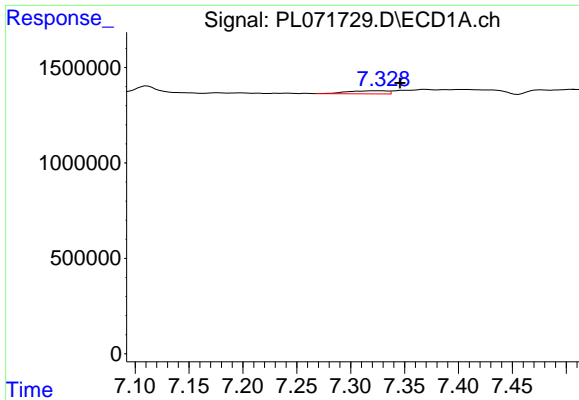
#10 gamma-Chlordane

R.T.: 0.000 min  
 Exp R.T. : 7.277 min  
 Response: 0  
 Conc: N.D.



#10 gamma-Chlordane

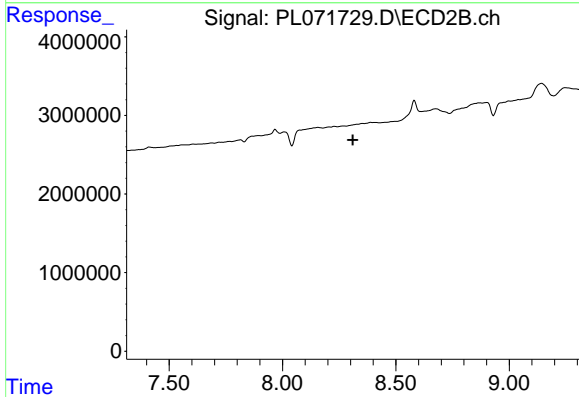
R.T.: 8.228 min  
 Delta R.T.: -0.002 min  
 Response: 3818574  
 Conc: 1.96 ng/ml



#11 alpha-Chlordane

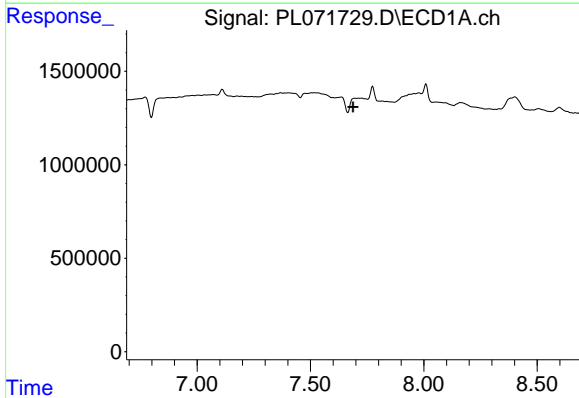
R.T.: 7.329 min  
 Delta R.T.: -0.017 min  
 Response: 425256  
 Conc: 0.50 ng/ml

Instrument :  
 ECD\_L  
 ClientSampleId :



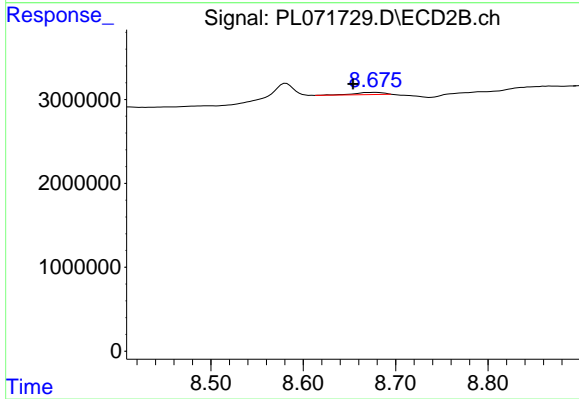
#11 alpha-Chlordane

R.T.: 0.000 min  
 Exp R.T. : 8.310 min  
 Response: 0  
 Conc: N.D.



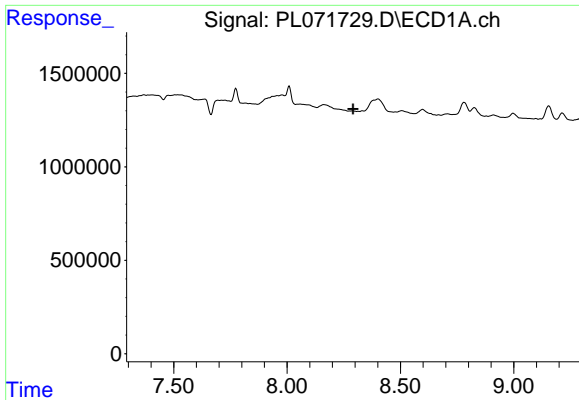
#13 Dieldrin

R.T.: 7.696 min  
 Delta R.T.: 0.009 min  
 Response: -476137  
 Conc: N.D.



#13 Dieldrin

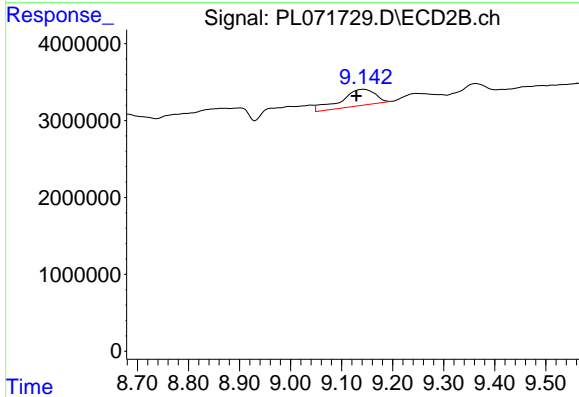
R.T.: 8.677 min  
 Delta R.T.: 0.023 min  
 Response: 572213  
 Conc: 0.31 ng/ml



#15 Endosulfan II

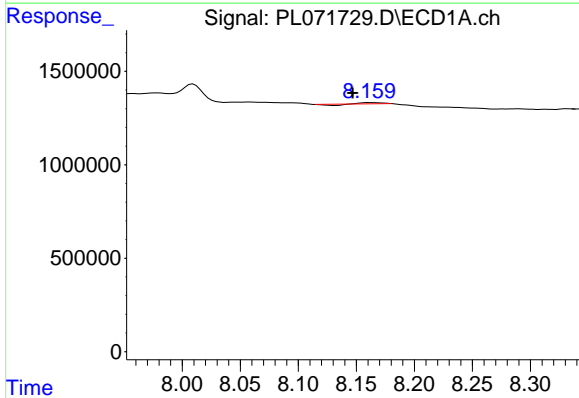
R.T.: 0.000 min  
 Exp R.T.: 8.291 min  
 Response: 0  
 Conc: N.D.

Instrument :  
 ECD\_L  
 ClientSampleId :



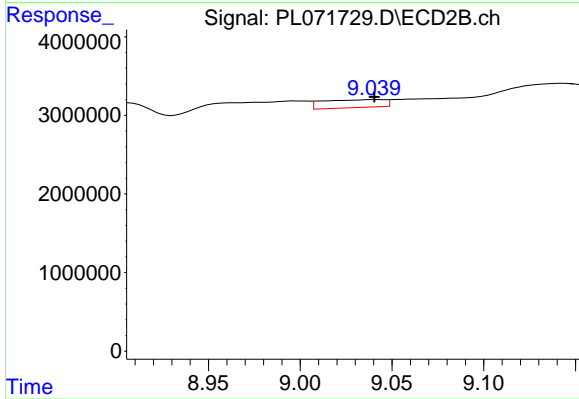
#15 Endosulfan II

R.T.: 9.144 min  
 Delta R.T.: 0.014 min  
 Response: 9939895  
 Conc: 6.69 ng/ml



#16 4,4'-DDD

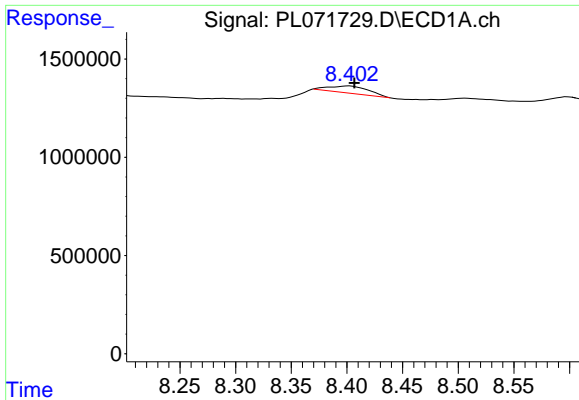
R.T.: 8.161 min  
 Delta R.T.: 0.014 min  
 Response: 35782  
 Conc: 0.06 ng/ml



#16 4,4'-DDD

R.T.: 9.041 min  
 Delta R.T.: 0.000 min  
 Response: 2369708  
 Conc: 1.82 ng/ml

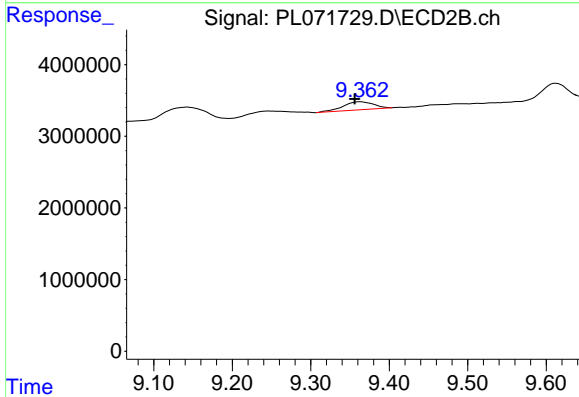




#17 4,4'-DDT

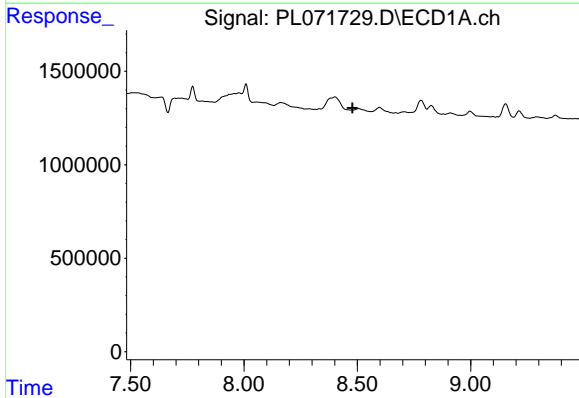
R.T.: 8.402 min  
 Delta R.T.: -0.005 min  
 Response: 849211  
 Conc: 1.32 ng/ml

Instrument :  
 ECD\_L  
 ClientSampleId :



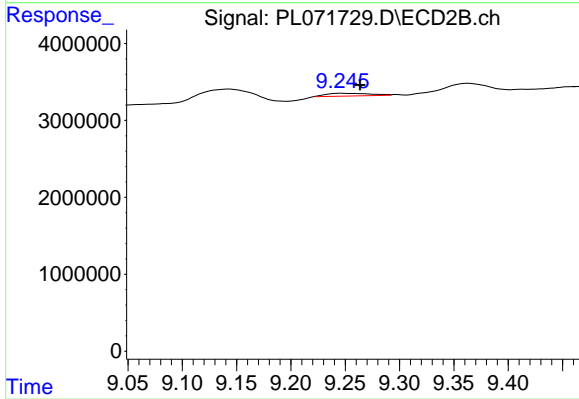
#17 4,4'-DDT

R.T.: 9.364 min  
 Delta R.T.: 0.007 min  
 Response: 3003740  
 Conc: 2.20 ng/ml



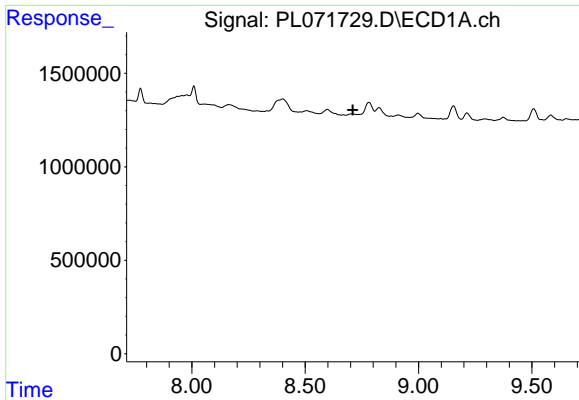
#18 Endrin aldehyde

R.T.: 0.000 min  
 Exp R.T. : 8.479 min  
 Response: 0  
 Conc: N.D.



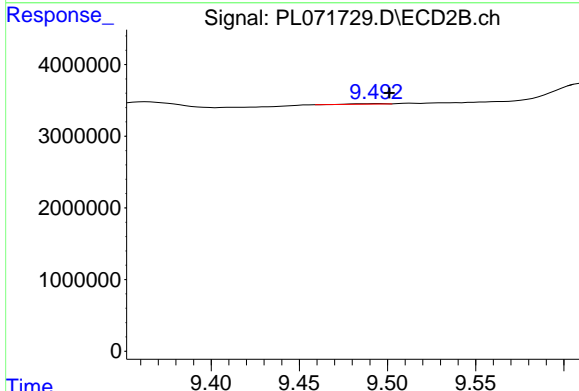
#18 Endrin aldehyde

R.T.: 9.247 min  
 Delta R.T.: -0.017 min  
 Response: 1028208  
 Conc: 0.89 ng/ml

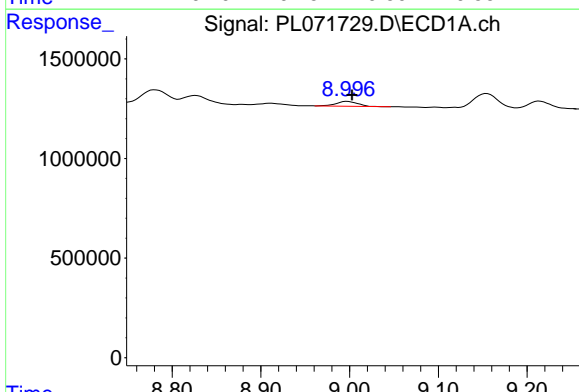


#19 Endosulfan Sulfate  
 R.T.: 0.000 min  
 Exp R.T.: 8.710 min  
 Response: 0  
 Conc: N.D.

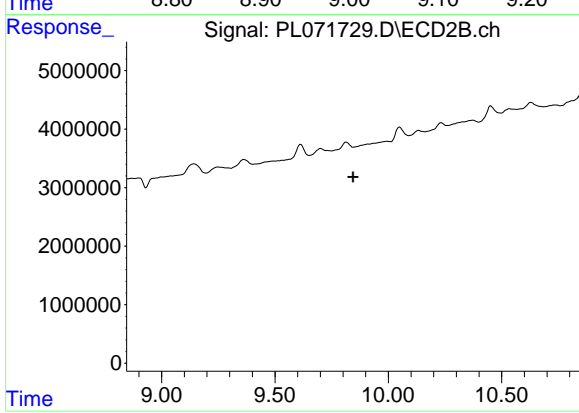
Instrument :  
 ECD\_L  
 ClientSampleId :



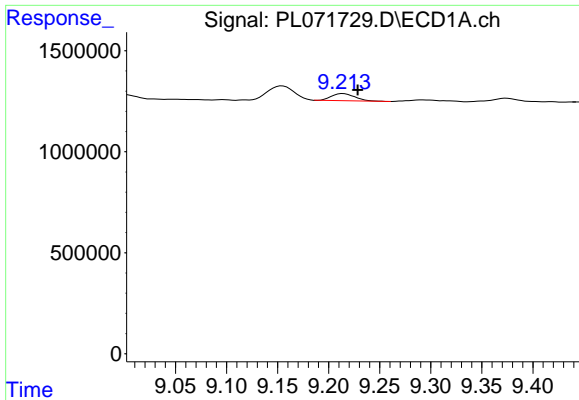
#19 Endosulfan Sulfate  
 R.T.: 9.495 min  
 Delta R.T.: -0.006 min  
 Response: 73758  
 Conc: 0.05 ng/ml



#20 Methoxychlor  
 R.T.: 8.997 min  
 Delta R.T.: -0.005 min  
 Response: 406922  
 Conc: 1.09 ng/ml



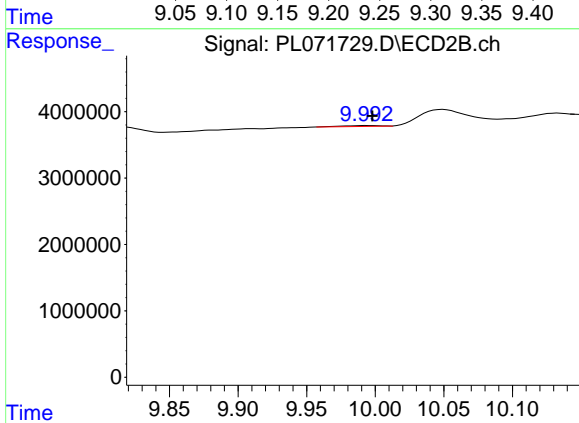
#20 Methoxychlor  
 R.T.: 0.000 min  
 Exp R.T.: 9.844 min  
 Response: 0  
 Conc: N.D.



#21 Endrin ketone

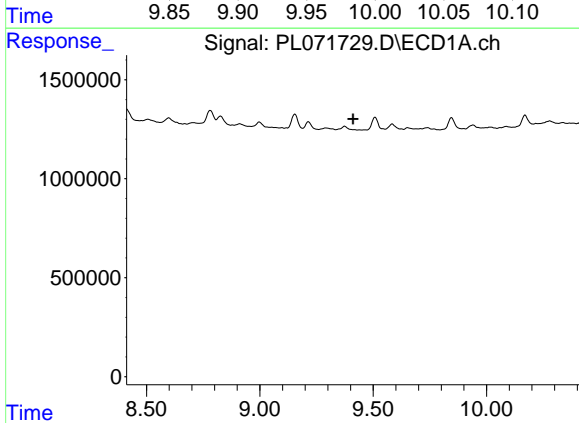
R.T.: 9.214 min  
 Delta R.T.: -0.014 min  
 Response: 568760  
 Conc: 0.72 ng/ml

Instrument :  
 ECD\_L  
 ClientSampleId :



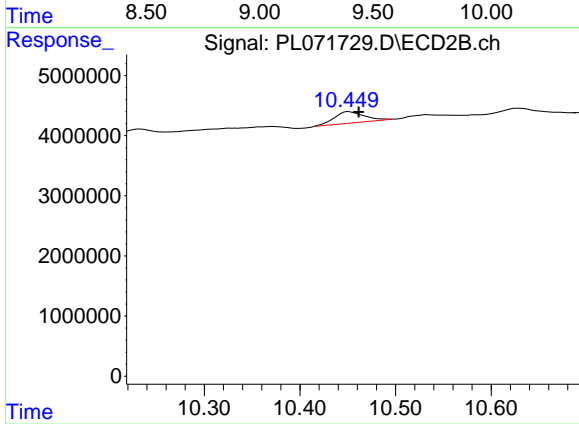
#21 Endrin ketone

R.T.: 9.993 min  
 Delta R.T.: -0.005 min  
 Response: 239202  
 Conc: 0.18 ng/ml



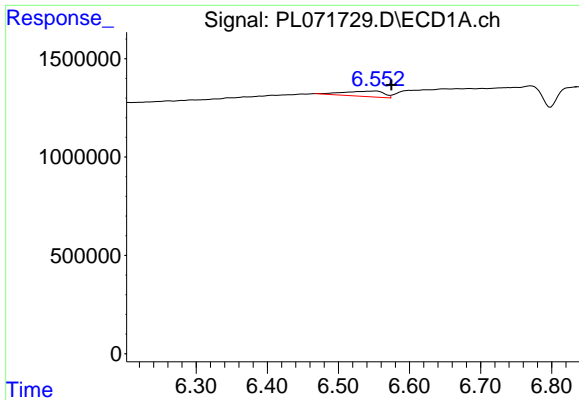
#22 Mirex

R.T.: 0.000 min  
 Exp R.T. : 9.411 min  
 Response: 0  
 Conc: N.D.



#22 Mirex

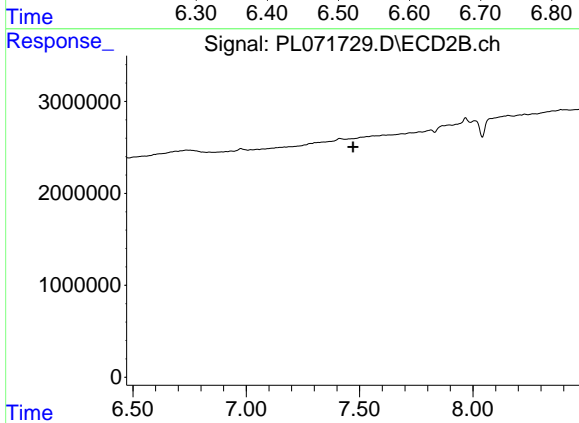
R.T.: 10.451 min  
 Delta R.T.: -0.010 min  
 Response: 4299956  
 Conc: 3.96 ng/ml



#24 Chlordane-2

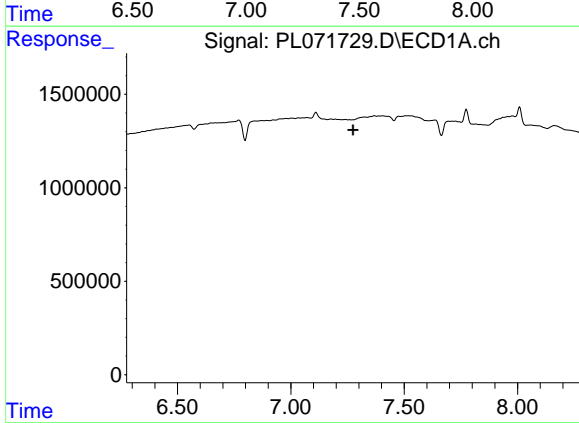
R.T.: 6.553 min  
 Delta R.T.: -0.022 min  
 Response: 1061152  
 Conc: 32.61 ng/ml

Instrument :  
 ECD\_L  
 ClientSampleId :



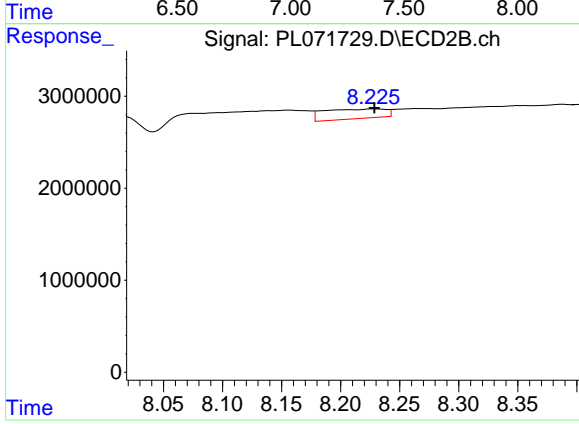
#24 Chlordane-2

R.T.: 0.000 min  
 Exp R.T. : 7.472 min  
 Response: 0  
 Conc: N.D.



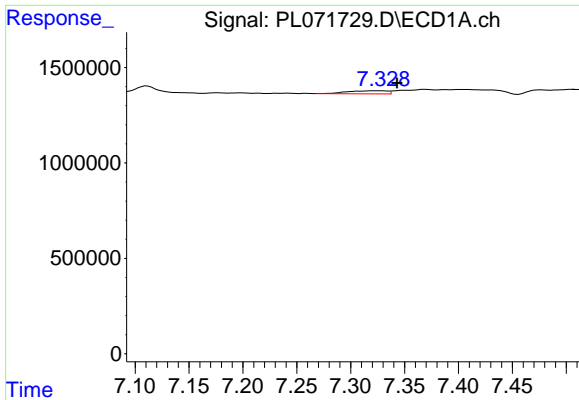
#25 Chlordane-3

R.T.: 0.000 min  
 Exp R.T. : 7.275 min  
 Response: 0  
 Conc: N.D.



#25 Chlordane-3

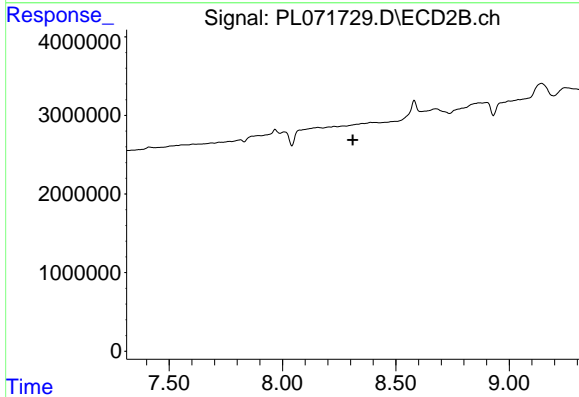
R.T.: 8.228 min  
 Delta R.T.: 0.000 min  
 Response: 3818574  
 Conc: 13.82 ng/ml



#26 Chlordane-4

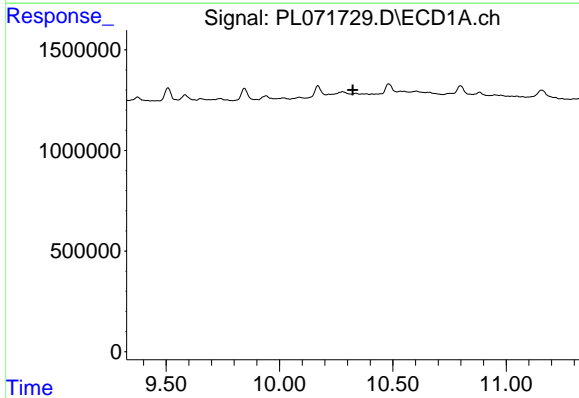
R.T.: 7.329 min  
 Delta R.T.: -0.014 min  
 Response: 425256  
 Conc: 4.61 ng/ml

Instrument :  
 ECD\_L  
 ClientSampleId :



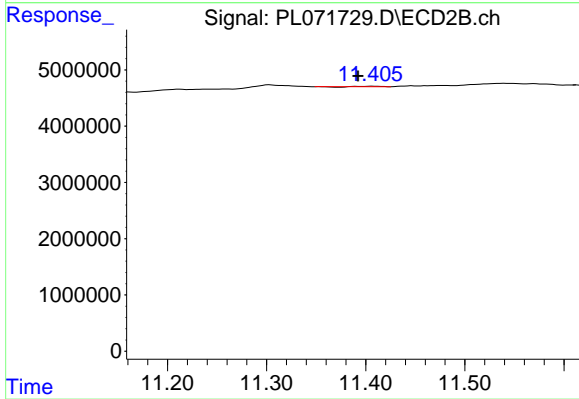
#26 Chlordane-4

R.T.: 0.000 min  
 Exp R.T. : 8.311 min  
 Response: 0  
 Conc: N.D.



#28 Decachlorobiphenyl

R.T.: 0.000 min  
 Exp R.T. : 10.324 min  
 Response: 0  
 Conc: N.D.



#28 Decachlorobiphenyl

R.T.: 11.407 min  
 Delta R.T.: 0.015 min  
 Response: 47129  
 Conc: 0.04 ng/ml