

Data Path : Z:\pestpcbsrv\HPCHEM1\ECD_L\Data\PL123022\
 Data File : PL079997.D
 Signal(s) : Signal #1: ECD1A.ch Signal #2: ECD2B.ch
 Acq On : 30 Dec 2022 00:27
 Operator : AR\AJ
 Sample : I.BLK
 Misc :
 ALS Vial : 2 Sample Multiplier: 1

Instrument :
 ECD_L
 ClientSampleId :

Integration File signal 1: autoint1.e
 Integration File signal 2: autoint2.e
 Quant Time: Dec 30 01:35:01 2022
 Quant Method : Z:\pestpcbsrv\HPCHEM1\ECD_L\methods\PL123022.M
 Quant Title : GC Extractables
 QLast Update : Thu Dec 29 17:31:33 2022
 Response via : Initial Calibration
 Integrator: ChemStation

Volume Inj. : 1 µl
 Signal #1 Phase : ZB-MR2 Signal #2 Phase: ZB-MR1
 Signal #1 Info : 30M x 0.32mm x0.2 Signal #2 Info : 30M x 0.32mm x0.5µm

Compound	RT#1	RT#2	Resp#1	Resp#2	ng/ml	ng/ml

System Monitoring Compounds						
1) SA Tetrachlo...	3.366	2.698	33899923	42031535	24.437	22.875
28) SA Decachlor...	8.806	7.858	36069172	41633001	25.656	24.898
Target Compounds						
2) A alpha-BHC	0.000	3.186	0	259786	N.D.	0.103 #
3) MA gamma-BHC...	4.157f	3.527	59657	91810	0.034	0.038
4) MA Heptachlor	4.725	3.887f	274177	72590	0.153	0.034 #
5) MB Aldrin	5.062	4.168f	596296	343746	0.357	0.150 #
7) B delta-BHC	4.581	4.055	1040587	225151	0.614	0.098 #
8) B Heptachlo...	5.490	4.648	3402659	61516	2.069	0.029 #
9) A Endosulfan I	5.874	5.027	2286442	732111	1.467	0.358 #
10) B gamma-Chl...	5.752	4.916	4734337	314281	2.761	0.146 #
11) B alpha-Chl...	5.824	4.956	1936749	342362	1.166	0.160 #
12) B 4,4'-DDE	5.997	5.167	1086445	94164	0.736	0.052 #
13) MA Dieldrin	6.147	5.294	2167361	302104	1.327	0.150 #
14) MA Endrin	6.378	5.582f	802565	999749	0.612	0.646
16) A 4,4'-DDD	6.522	5.738f	915816	-52395	0.730	N.D. #
17) MA 4,4'-DDT	6.810	0.000	421105	0	0.332	N.D. #
18) B Endrin al...	6.728	6.066f	406996	1470291	0.372	1.093 #
19) B Endosulfa...	6.953	6.266	168991	912208	0.117	0.524 #
20) A Methoxychlor	0.000	6.570f	0	33729	N.D.	0.044 #
24) Chlordane-2	5.062f	0.000	596296	0	8.791	N.D. #
25) Chlordane-3	5.752	4.916	4734337	314281	18.599	1.552 #
26) Chlordane-4	5.824	4.956	1936749	342362	6.275	1.711 #
27) Chlordane-5	6.690f	5.612f	222265	313050	4.106	5.774 #

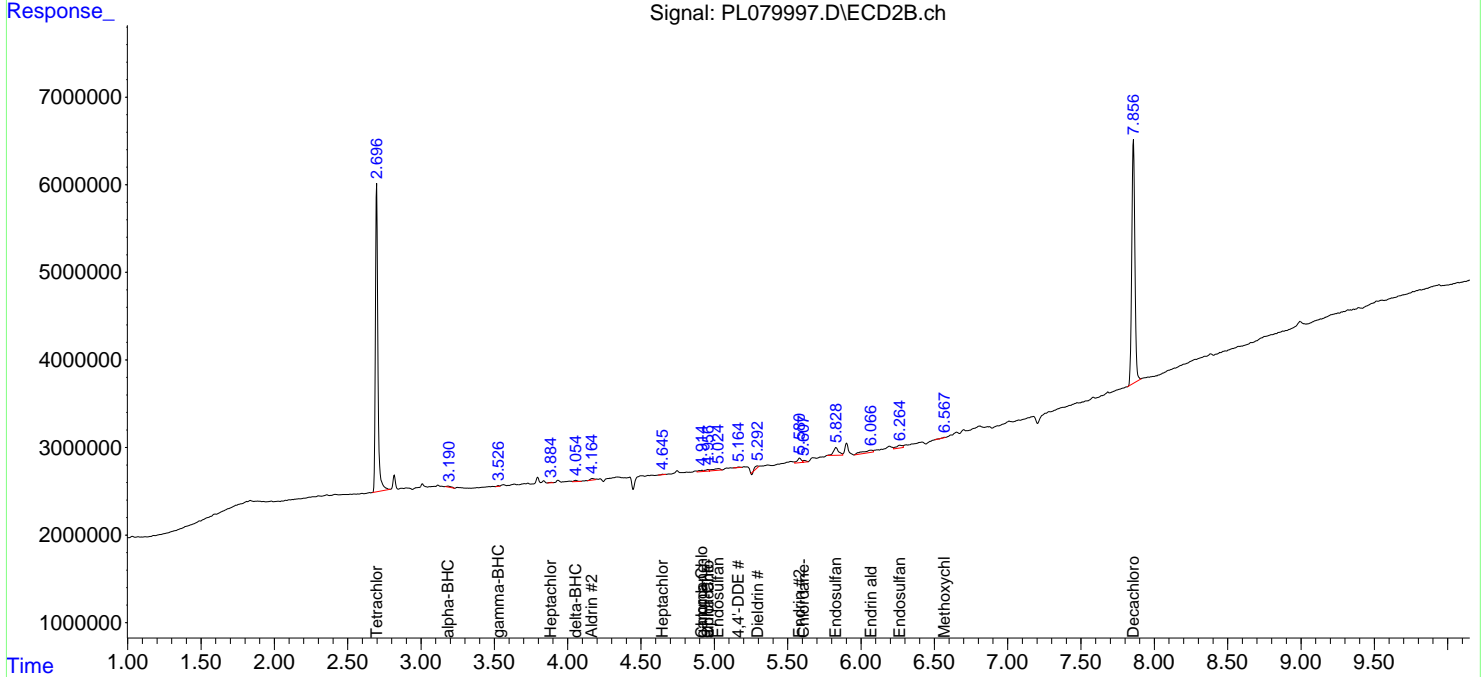
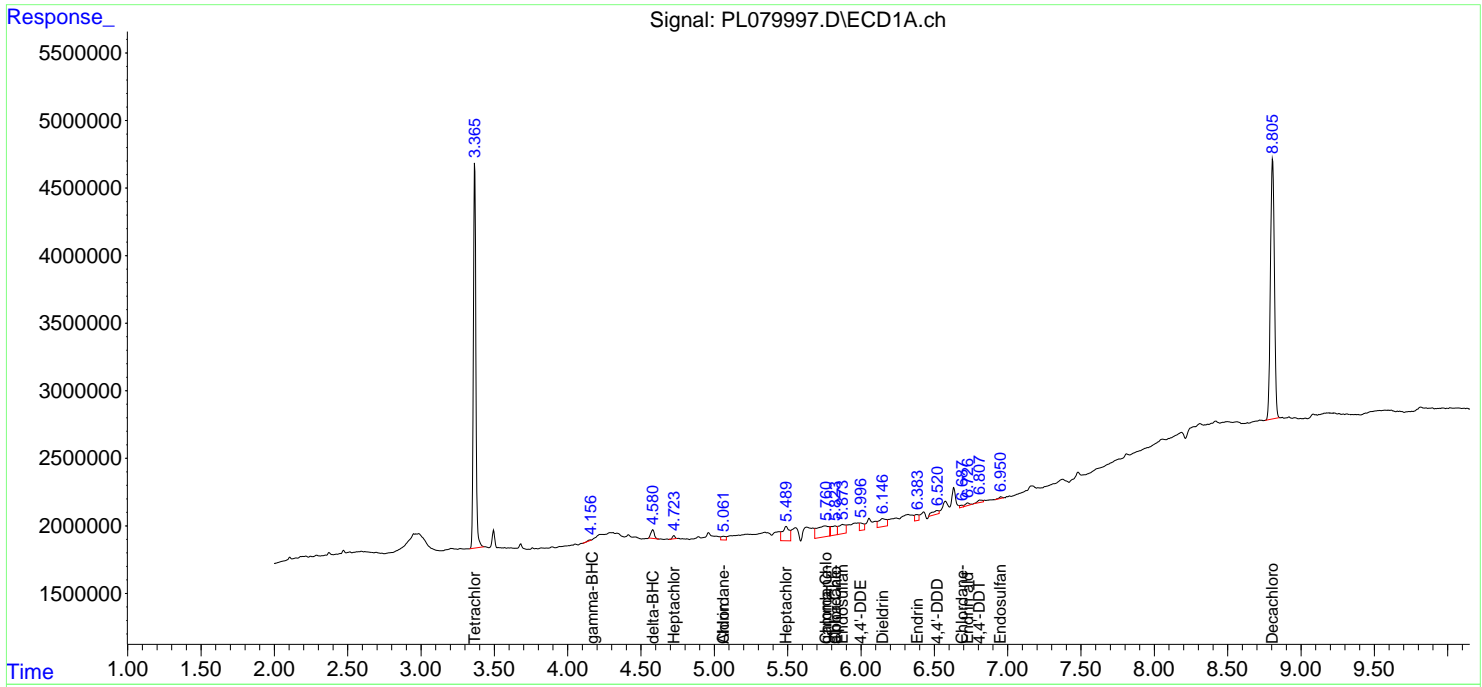
(f)=RT Delta > 1/2 Window (#)=Amounts differ by > 25% (m)=manual int.

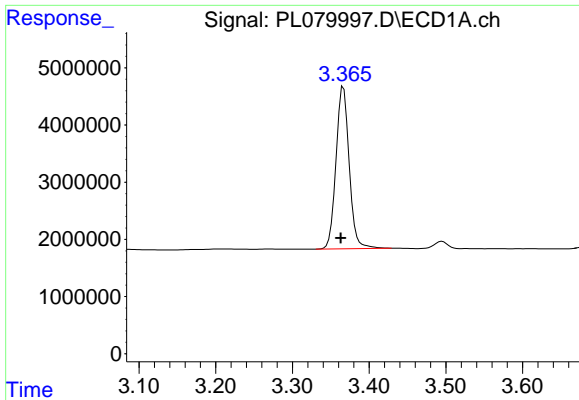
Data Path : Z:\pestpcbsrv\HPCHEM1\ECD_L\Data\PL123022\
 Data File : PL079997.D
 Signal(s) : Signal #1: ECD1A.ch Signal #2: ECD2B.ch
 Acq On : 30 Dec 2022 00:27
 Operator : AR\AJ
 Sample : I.BLK
 Misc :
 ALS Vial : 2 Sample Multiplier: 1

Instrument :
 ECD_L
 ClientSampleId :

Integration File signal 1: autoint1.e
 Integration File signal 2: autoint2.e
 Quant Time: Dec 30 01:35:01 2022
 Quant Method : Z:\pestpcbsrv\HPCHEM1\ECD_L\methods\PL123022.M
 Quant Title : GC Extractables
 QLast Update : Thu Dec 29 17:31:33 2022
 Response via : Initial Calibration
 Integrator: ChemStation

Volume Inj. : 1 µl
 Signal #1 Phase : ZB-MR2 Signal #2 Phase: ZB-MR1
 Signal #1 Info : 30M x 0.32mm x0.2 Signal #2 Info : 30M x 0.32mm x0.5µm

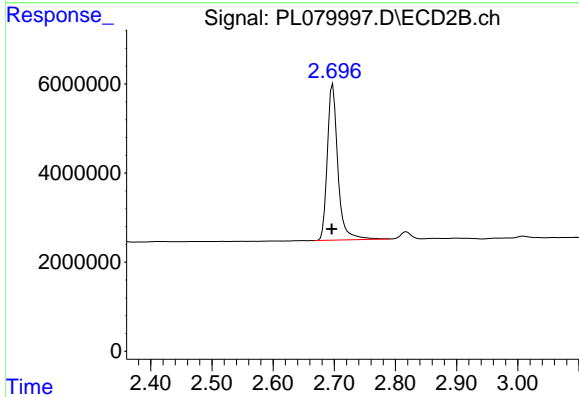




#1 Tetrachloro-m-xylene

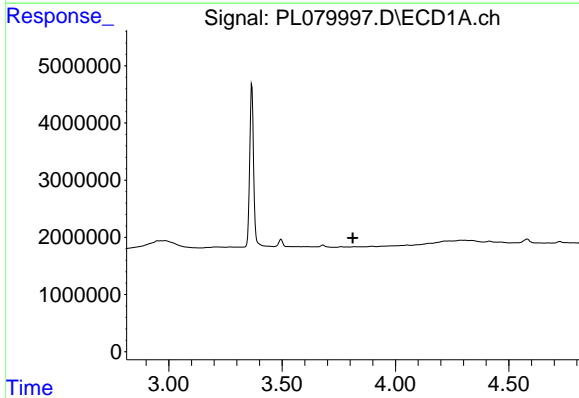
R.T.: 3.366 min
 Delta R.T.: 0.003 min
 Response: 33899923
 Conc: 24.44 ng/ml

Instrument :
 ECD_L
 ClientSampleId :



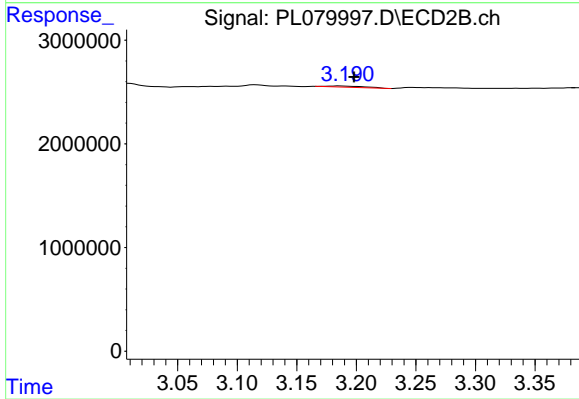
#1 Tetrachloro-m-xylene

R.T.: 2.698 min
 Delta R.T.: 0.002 min
 Response: 42031535
 Conc: 22.88 ng/ml



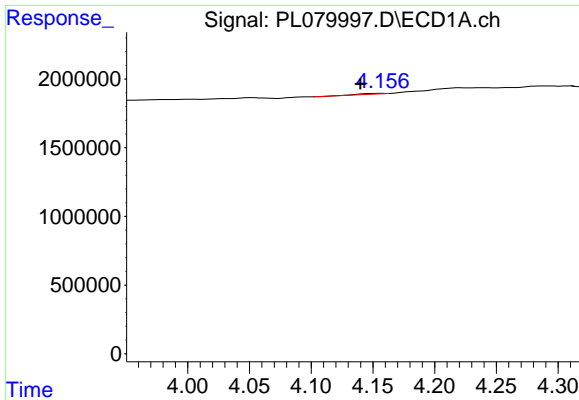
#2 alpha-BHC

R.T.: 0.000 min
 Exp R.T. : 3.812 min
 Response: 0
 Conc: N.D.



#2 alpha-BHC

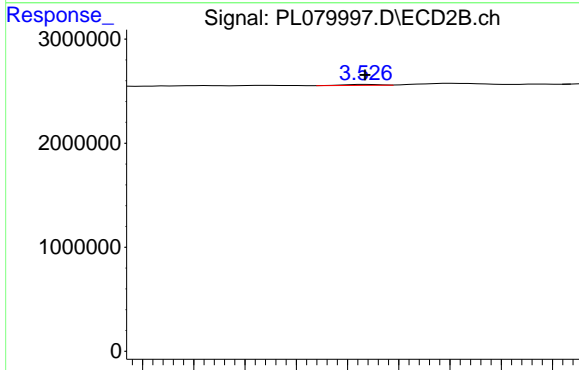
R.T.: 3.186 min
 Delta R.T.: -0.013 min
 Response: 259786
 Conc: 0.10 ng/ml



#3 gamma-BHC (Lindane)

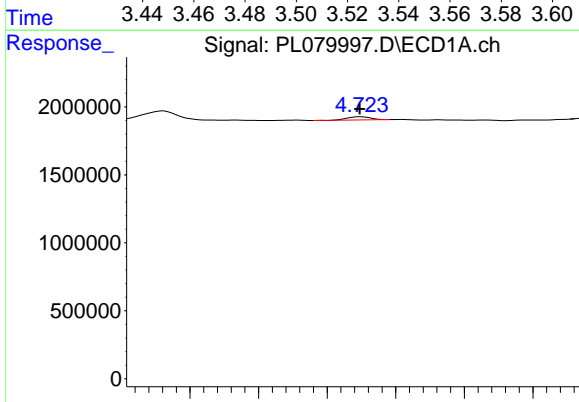
R.T.: 4.157 min
 Delta R.T.: 0.017 min
 Response: 59657
 Conc: 0.03 ng/ml

Instrument :
 ECD_L
 ClientSampleId :



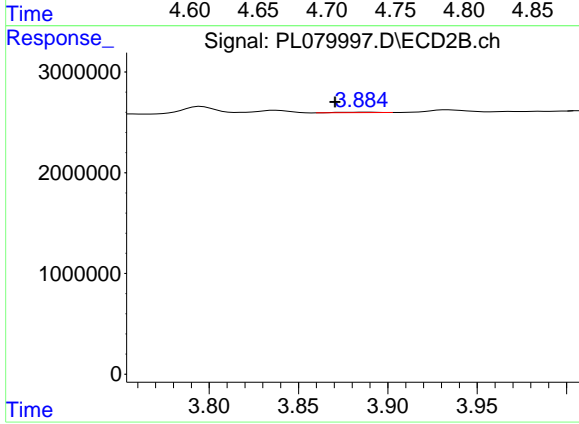
#3 gamma-BHC (Lindane)

R.T.: 3.527 min
 Delta R.T.: 0.000 min
 Response: 91810
 Conc: 0.04 ng/ml



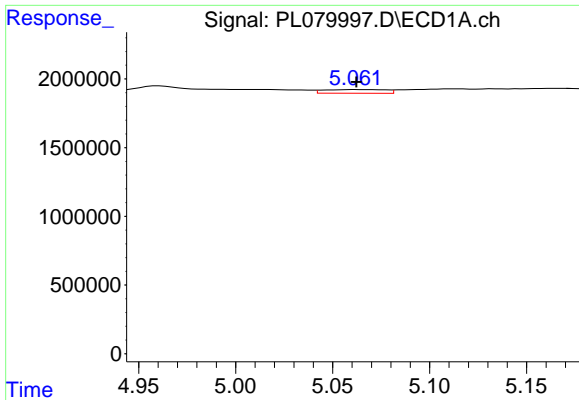
#4 Heptachlor

R.T.: 4.725 min
 Delta R.T.: 0.001 min
 Response: 274177
 Conc: 0.15 ng/ml



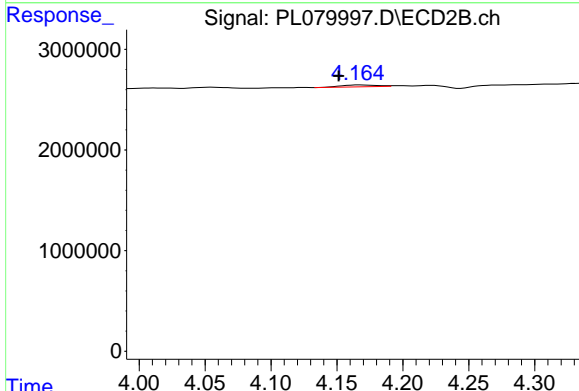
#4 Heptachlor

R.T.: 3.887 min
 Delta R.T.: 0.017 min
 Response: 72590
 Conc: 0.03 ng/ml

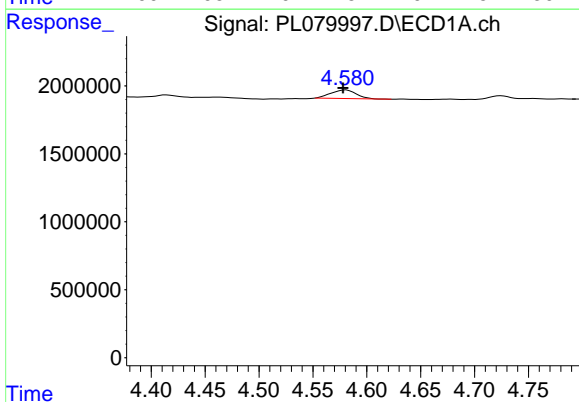


#5 Aldrin
 R.T.: 5.062 min
 Delta R.T.: 0.000 min
 Response: 596296
 Conc: 0.36 ng/ml

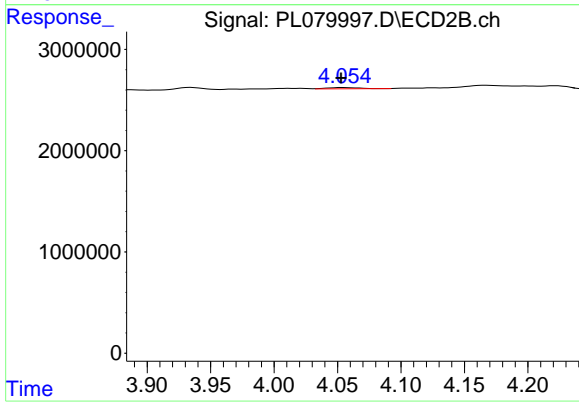
Instrument :
 ECD_L
 ClientSampleId :



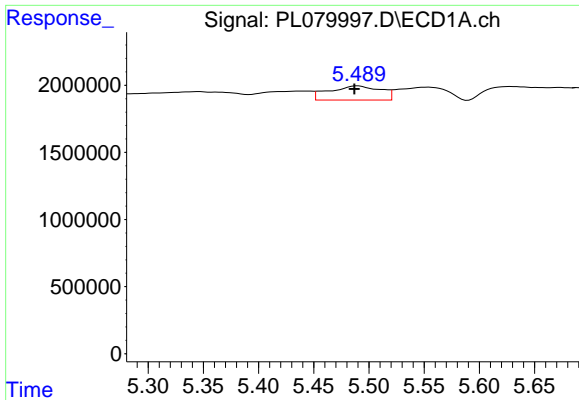
#5 Aldrin
 R.T.: 4.168 min
 Delta R.T.: 0.016 min
 Response: 343746
 Conc: 0.15 ng/ml



#7 delta-BHC
 R.T.: 4.581 min
 Delta R.T.: 0.003 min
 Response: 1040587
 Conc: 0.61 ng/ml



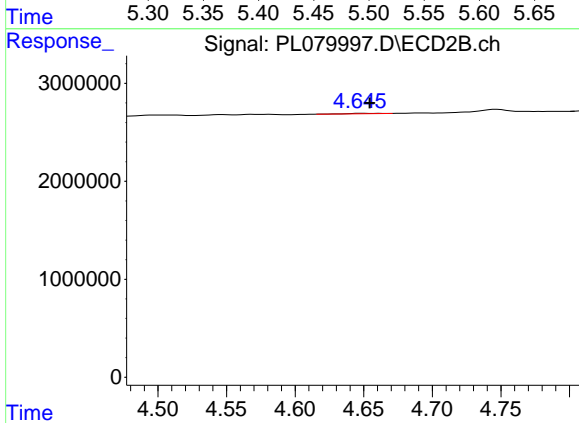
#7 delta-BHC
 R.T.: 4.055 min
 Delta R.T.: 0.002 min
 Response: 225151
 Conc: 0.10 ng/ml



#8 Heptachlor epoxide

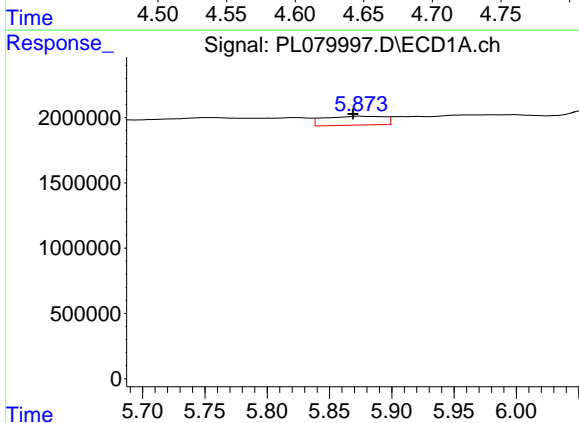
R.T.: 5.490 min
 Delta R.T.: 0.003 min
 Response: 3402659
 Conc: 2.07 ng/ml

Instrument :
 ECD_L
 ClientSampleId :



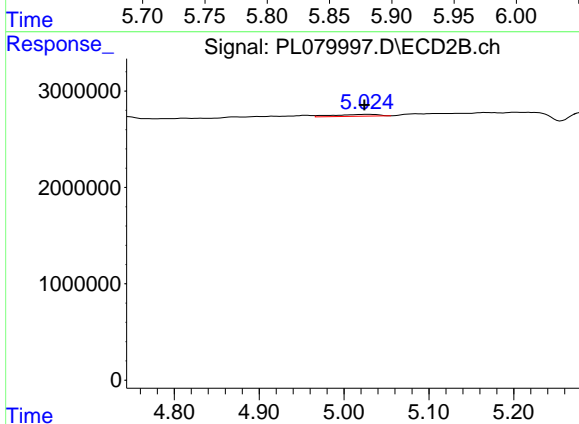
#8 Heptachlor epoxide

R.T.: 4.648 min
 Delta R.T.: -0.006 min
 Response: 61516
 Conc: 0.03 ng/ml



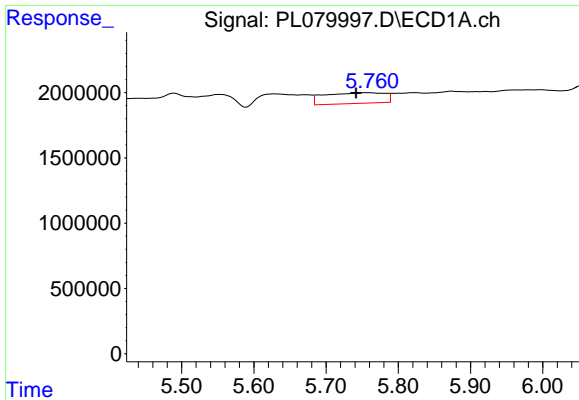
#9 Endosulfan I

R.T.: 5.874 min
 Delta R.T.: 0.005 min
 Response: 2286442
 Conc: 1.47 ng/ml



#9 Endosulfan I

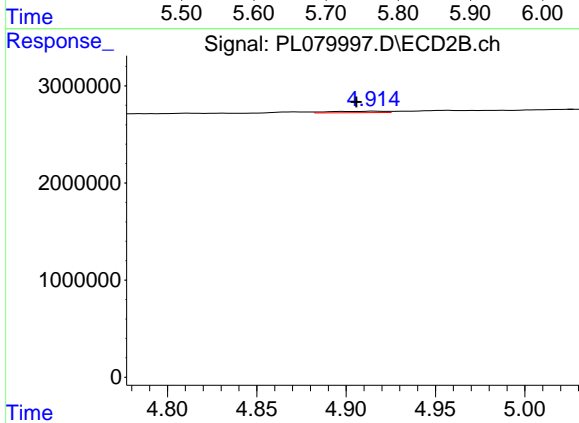
R.T.: 5.027 min
 Delta R.T.: 0.002 min
 Response: 732111
 Conc: 0.36 ng/ml



#10 gamma-Chlordane

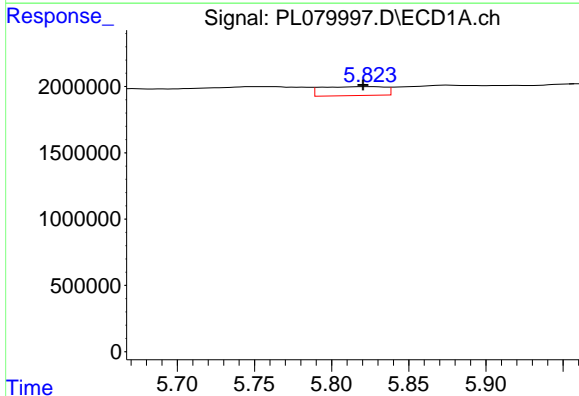
R.T.: 5.752 min
 Delta R.T.: 0.011 min
 Response: 4734337
 Conc: 2.76 ng/ml

Instrument :
 ECD_L
 ClientSampleId :



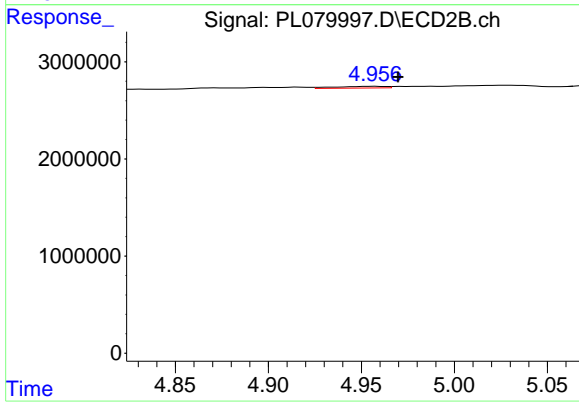
#10 gamma-Chlordane

R.T.: 4.916 min
 Delta R.T.: 0.011 min
 Response: 314281
 Conc: 0.15 ng/ml



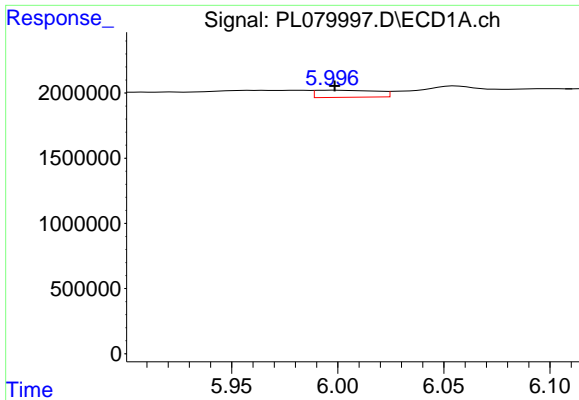
#11 alpha-Chlordane

R.T.: 5.824 min
 Delta R.T.: 0.004 min
 Response: 1936749
 Conc: 1.17 ng/ml



#11 alpha-Chlordane

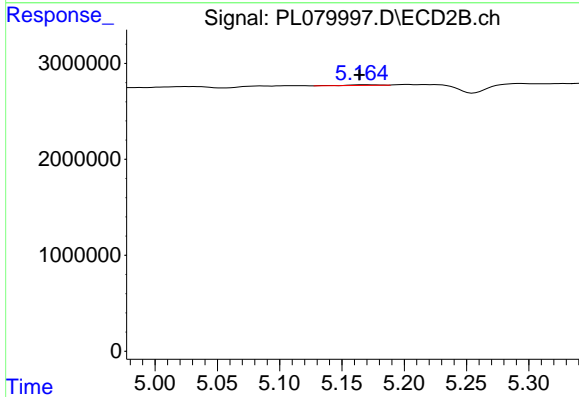
R.T.: 4.956 min
 Delta R.T.: -0.014 min
 Response: 342362
 Conc: 0.16 ng/ml



#12 4,4'-DDE

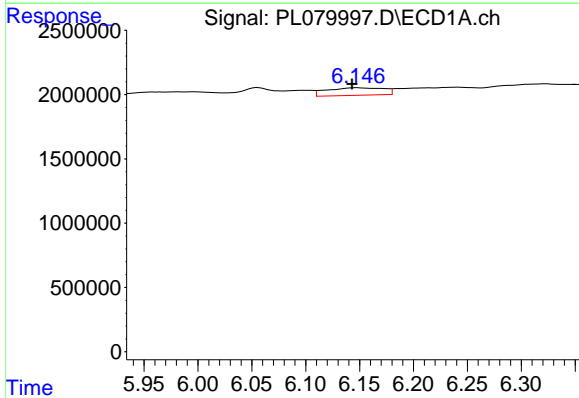
R.T.: 5.997 min
 Delta R.T.: -0.001 min
 Response: 1086445
 Conc: 0.74 ng/ml

Instrument :
 ECD_L
 ClientSampleId :



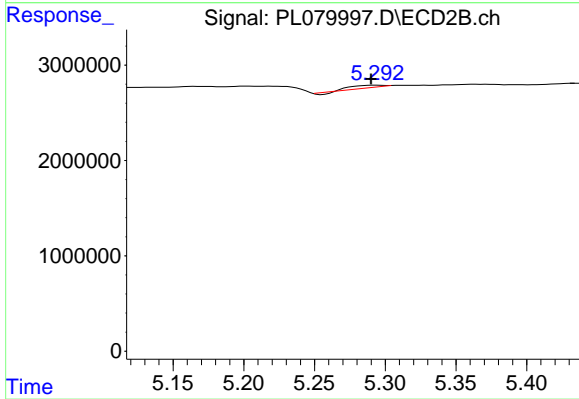
#12 4,4'-DDE

R.T.: 5.167 min
 Delta R.T.: 0.003 min
 Response: 94164
 Conc: 0.05 ng/ml



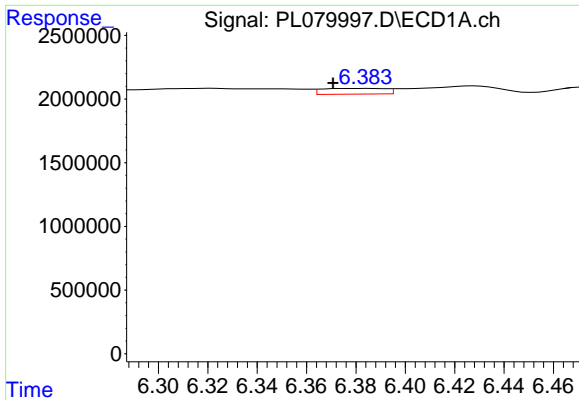
#13 Dieldrin

R.T.: 6.147 min
 Delta R.T.: 0.004 min
 Response: 2167361
 Conc: 1.33 ng/ml



#13 Dieldrin

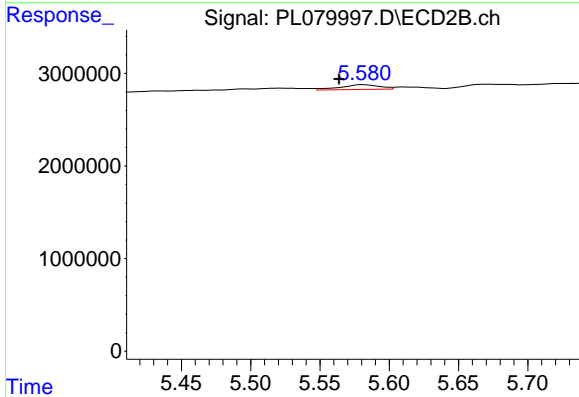
R.T.: 5.294 min
 Delta R.T.: 0.004 min
 Response: 302104
 Conc: 0.15 ng/ml



#14 Endrin

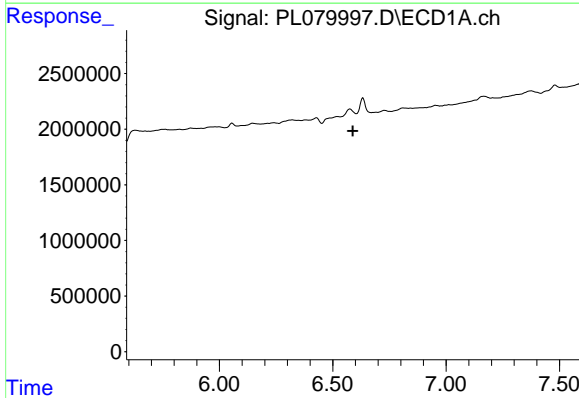
R.T.: 6.378 min
 Delta R.T.: 0.007 min
 Response: 802565
 Conc: 0.61 ng/ml

Instrument :
 ECD_L
 ClientSampleId :



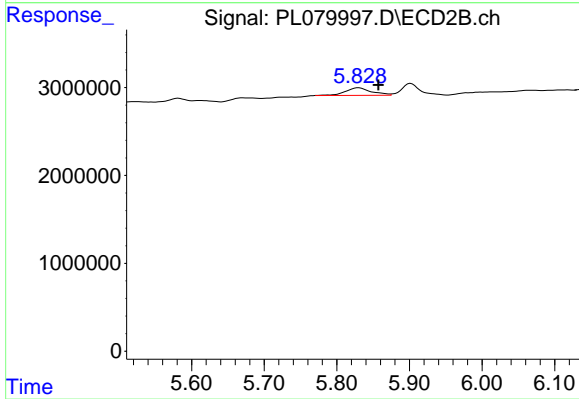
#14 Endrin

R.T.: 5.582 min
 Delta R.T.: 0.018 min
 Response: 999749
 Conc: 0.65 ng/ml



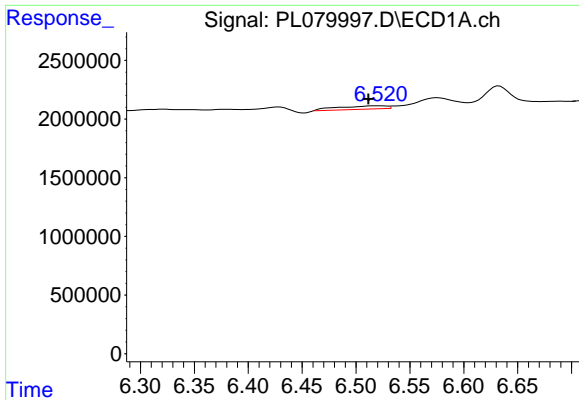
#15 Endosulfan II

R.T.: 6.576 min
 Delta R.T.: -0.013 min
 Response: 1957449
 Conc: N.D.



#15 Endosulfan II

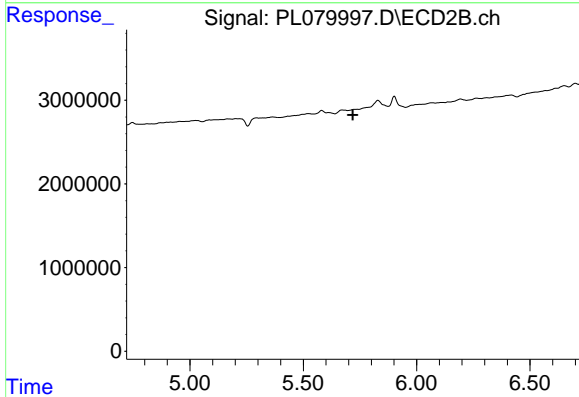
R.T.: 5.830 min
 Delta R.T.: -0.027 min
 Response: 2176505
 Conc: 1.25 ng/ml



#16 4,4'-DDD

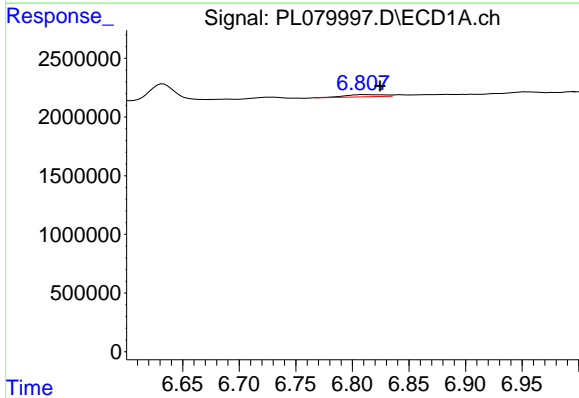
R.T.: 6.522 min
 Delta R.T.: 0.011 min
 Response: 915816
 Conc: 0.73 ng/ml

Instrument :
 ECD_L
 ClientSampleId :



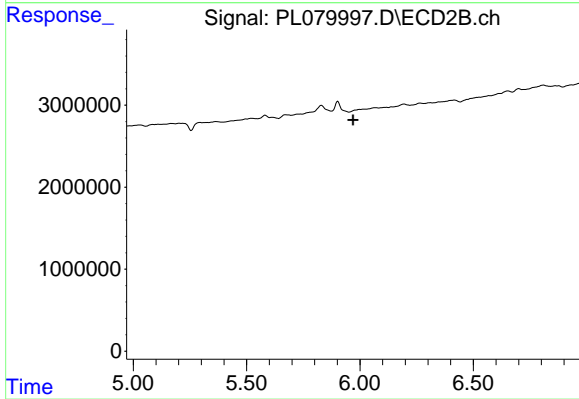
#16 4,4'-DDD

R.T.: 5.738 min
 Delta R.T.: 0.020 min
 Response: -52395
 Conc: N.D.



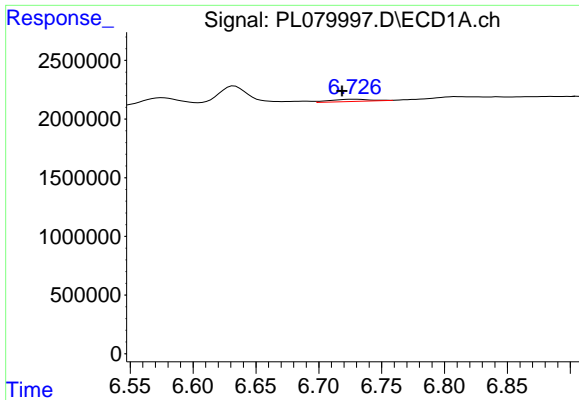
#17 4,4'-DDT

R.T.: 6.810 min
 Delta R.T.: -0.014 min
 Response: 421105
 Conc: 0.33 ng/ml



#17 4,4'-DDT

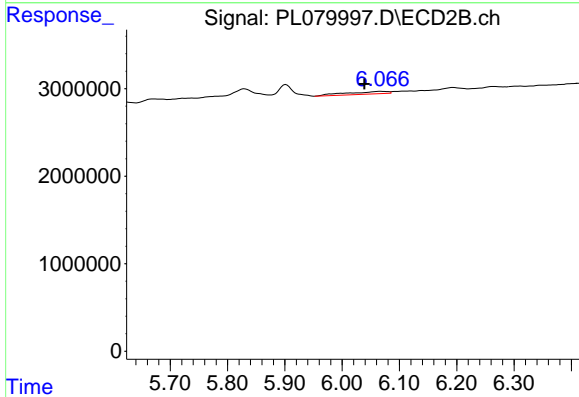
R.T.: 0.000 min
 Exp R.T.: 5.970 min
 Response: 0
 Conc: N.D.



#18 Endrin aldehyde

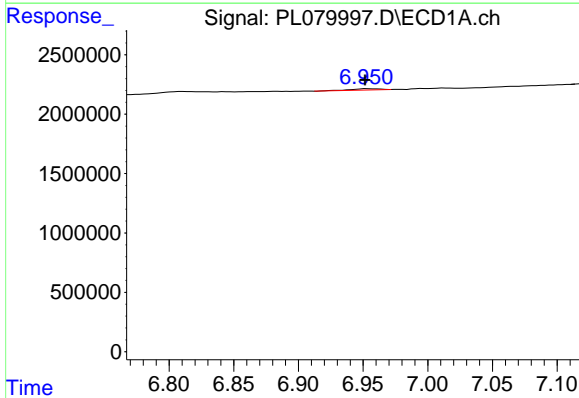
R.T.: 6.728 min
 Delta R.T.: 0.009 min
 Response: 406996
 Conc: 0.37 ng/ml

Instrument :
 ECD_L
 ClientSampleId :



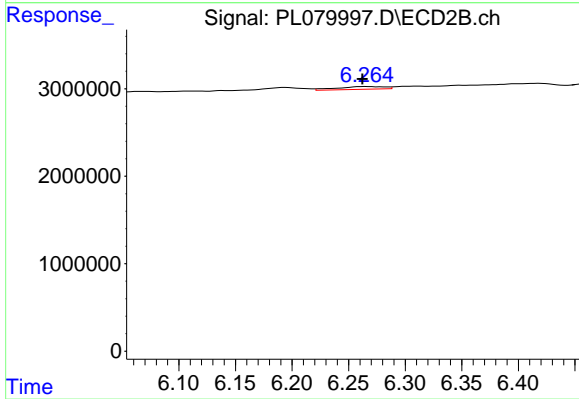
#18 Endrin aldehyde

R.T.: 6.066 min
 Delta R.T.: 0.028 min
 Response: 1470291
 Conc: 1.09 ng/ml



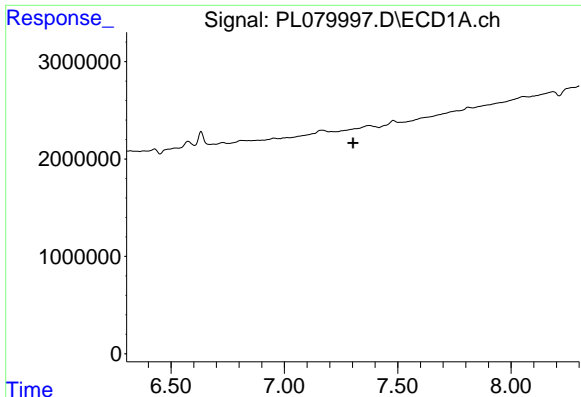
#19 Endosulfan Sulfate

R.T.: 6.953 min
 Delta R.T.: 0.001 min
 Response: 168991
 Conc: 0.12 ng/ml



#19 Endosulfan Sulfate

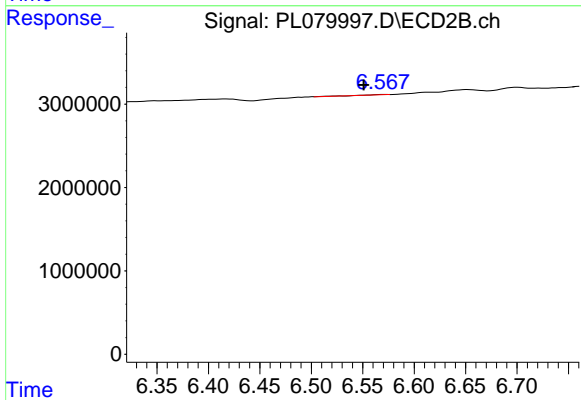
R.T.: 6.266 min
 Delta R.T.: 0.003 min
 Response: 912208
 Conc: 0.52 ng/ml



#20 Methoxychlor

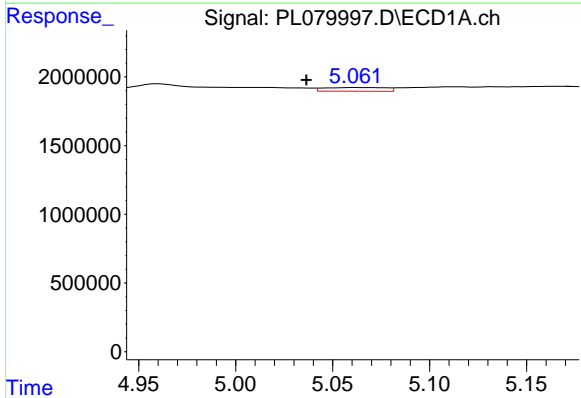
R.T.: 0.000 min
 Exp R.T. : 7.303 min
 Response: 0
 Conc: N.D.

Instrument :
 ECD_L
 ClientSampleId :



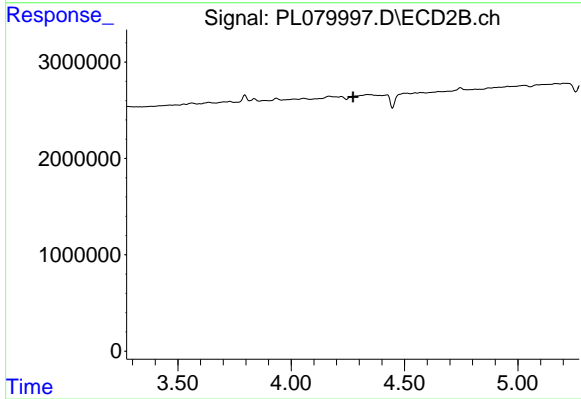
#20 Methoxychlor

R.T.: 6.570 min
 Delta R.T.: 0.019 min
 Response: 33729
 Conc: 0.04 ng/ml



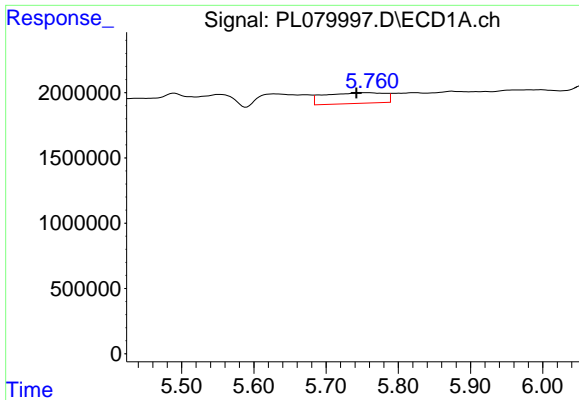
#24 Chlordane-2

R.T.: 5.062 min
 Delta R.T.: 0.025 min
 Response: 596296
 Conc: 8.79 ng/ml



#24 Chlordane-2

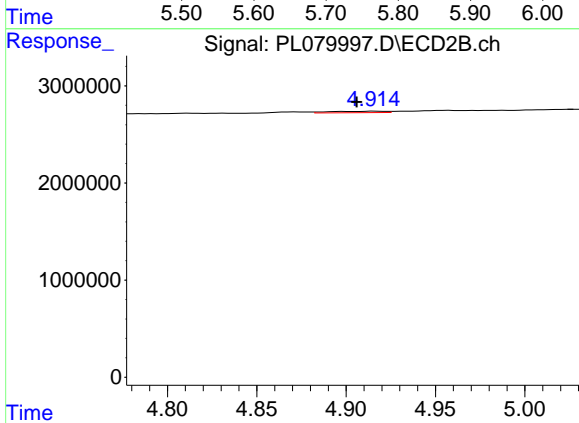
R.T.: 0.000 min
 Exp R.T. : 4.274 min
 Response: 0
 Conc: N.D.



#25 Chlordane-3

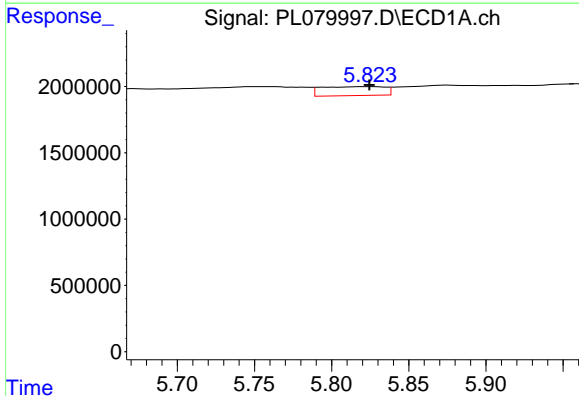
R.T.: 5.752 min
 Delta R.T.: 0.010 min
 Response: 4734337
 Conc: 18.60 ng/ml

Instrument :
 ECD_L
 ClientSampleId :



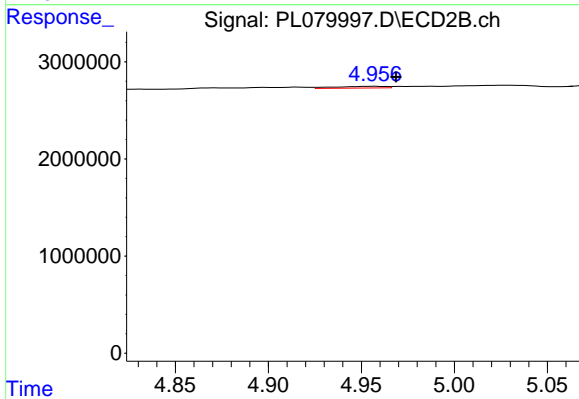
#25 Chlordane-3

R.T.: 4.916 min
 Delta R.T.: 0.010 min
 Response: 314281
 Conc: 1.55 ng/ml



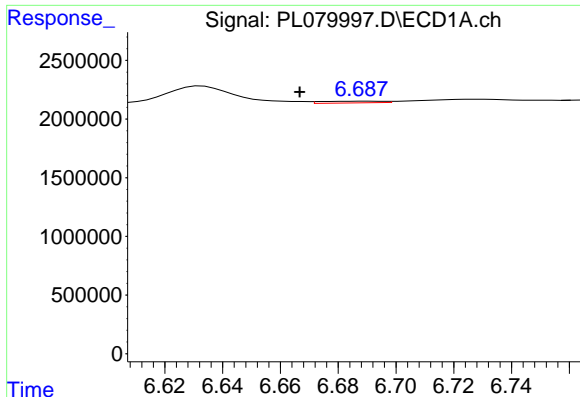
#26 Chlordane-4

R.T.: 5.824 min
 Delta R.T.: 0.000 min
 Response: 1936749
 Conc: 6.28 ng/ml



#26 Chlordane-4

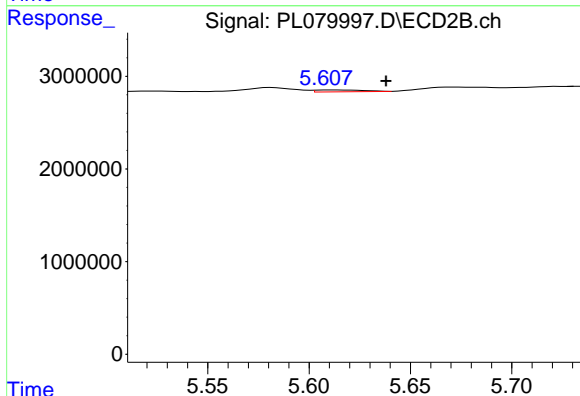
R.T.: 4.956 min
 Delta R.T.: -0.013 min
 Response: 342362
 Conc: 1.71 ng/ml



#27 Chlordane-5

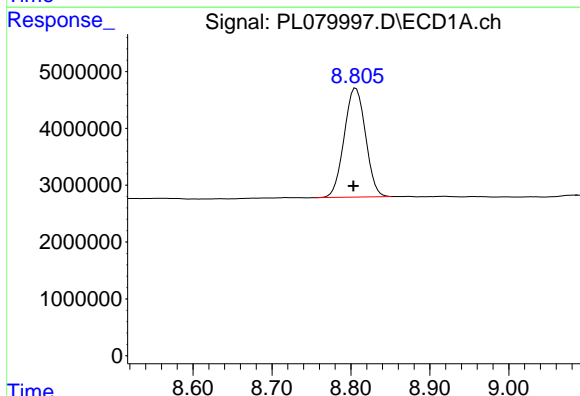
R.T.: 6.690 min
 Delta R.T.: 0.023 min
 Response: 222265
 Conc: 4.11 ng/ml

Instrument :
 ECD_L
 ClientSampleId :



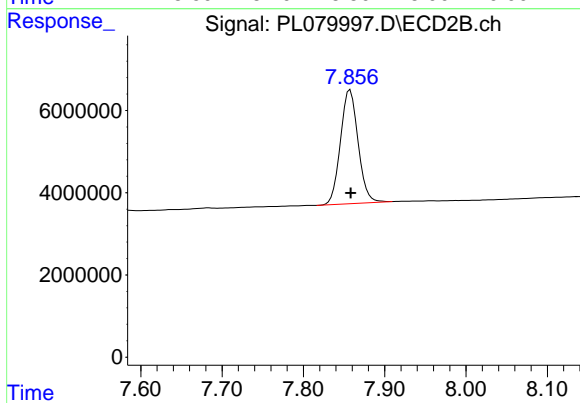
#27 Chlordane-5

R.T.: 5.612 min
 Delta R.T.: -0.027 min
 Response: 313050
 Conc: 5.77 ng/ml



#28 Decachlorobiphenyl

R.T.: 8.806 min
 Delta R.T.: 0.003 min
 Response: 36069172
 Conc: 25.66 ng/ml



#28 Decachlorobiphenyl

R.T.: 7.858 min
 Delta R.T.: 0.000 min
 Response: 41633001
 Conc: 24.90 ng/ml