

Data Path : Z:\pestpcbsrv\HPCHEM1\ECD\_L\Data\PL123119\  
 Data File : PL055417.D  
 Signal(s) : Signal #1: ECD1A.ch Signal #2: ECD2B.ch  
 Acq On : 31 Dec 2019 13:26  
 Operator : SG\AJ  
 Sample : PB125811BL  
 Misc :  
 ALS Vial : 9 Sample Multiplier: 1

Instrument :  
 ECD\_L  
 ClientSampleId :  
 PB125811BL

Integration File signal 1: autoint1.e  
 Integration File signal 2: autoint2.e  
 Quant Time: Jan 01 00:40:13 2020  
 Quant Method : Z:\pestpcbsrv\HPCHEM1\ECD\_L\methods\PL122119.M  
 Quant Title : GC Extractables  
 QLast Update : Sat Dec 21 05:21:06 2019  
 Response via : Initial Calibration  
 Integrator: ChemStation

Volume Inj. : 1 µl  
 Signal #1 Phase : ZB-MR2 Signal #2 Phase: ZB-MR1  
 Signal #1 Info : 30M x 0.32mm x0.2 Signal #2 Info : 30M x 0.32mm x0.5µm

Compound	RT#1	RT#2	Resp#1	Resp#2	ng/ml	ng/ml
-----						
System Monitoring Compounds						
1) SA Tetrachlo...	3.536	4.049	240.6E6	64756191	22.876	24.508
28) SA Decachlor...	8.318	9.153	213.3E6	51613505	22.986	23.381

Target Compounds

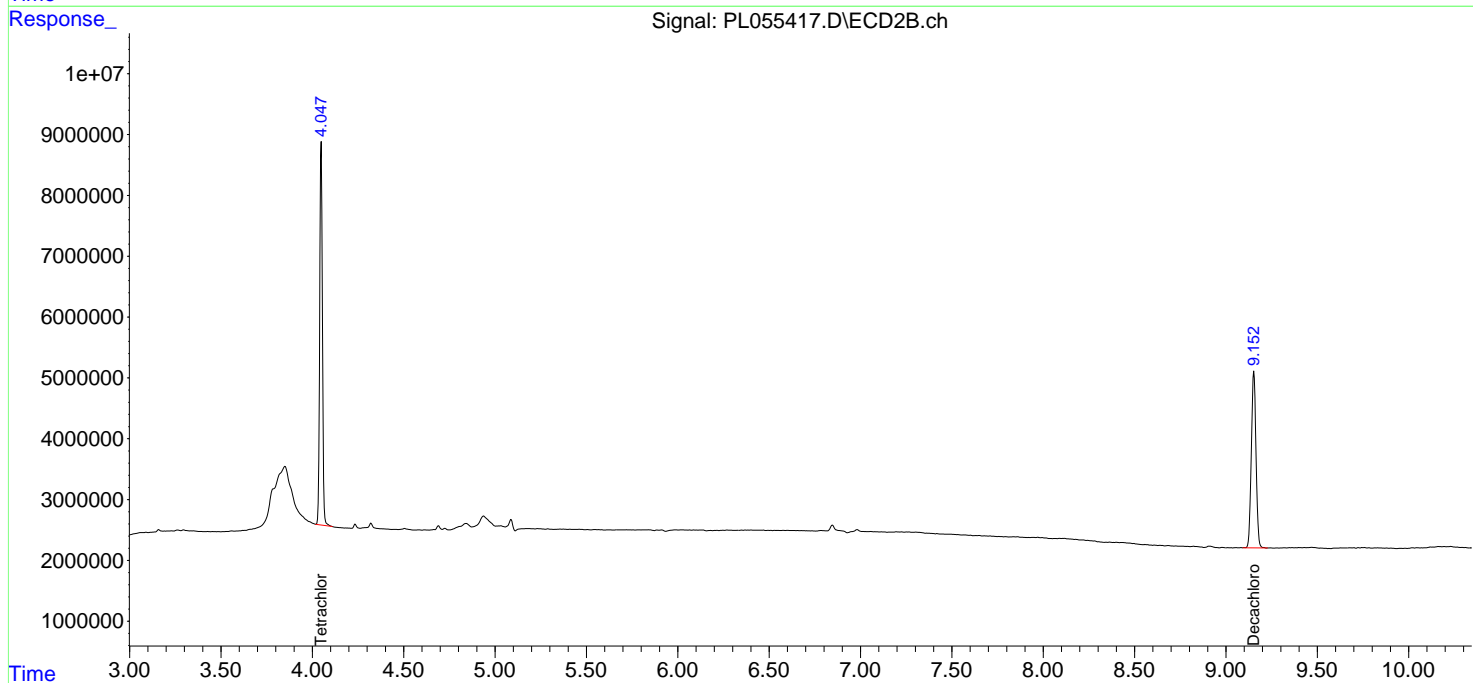
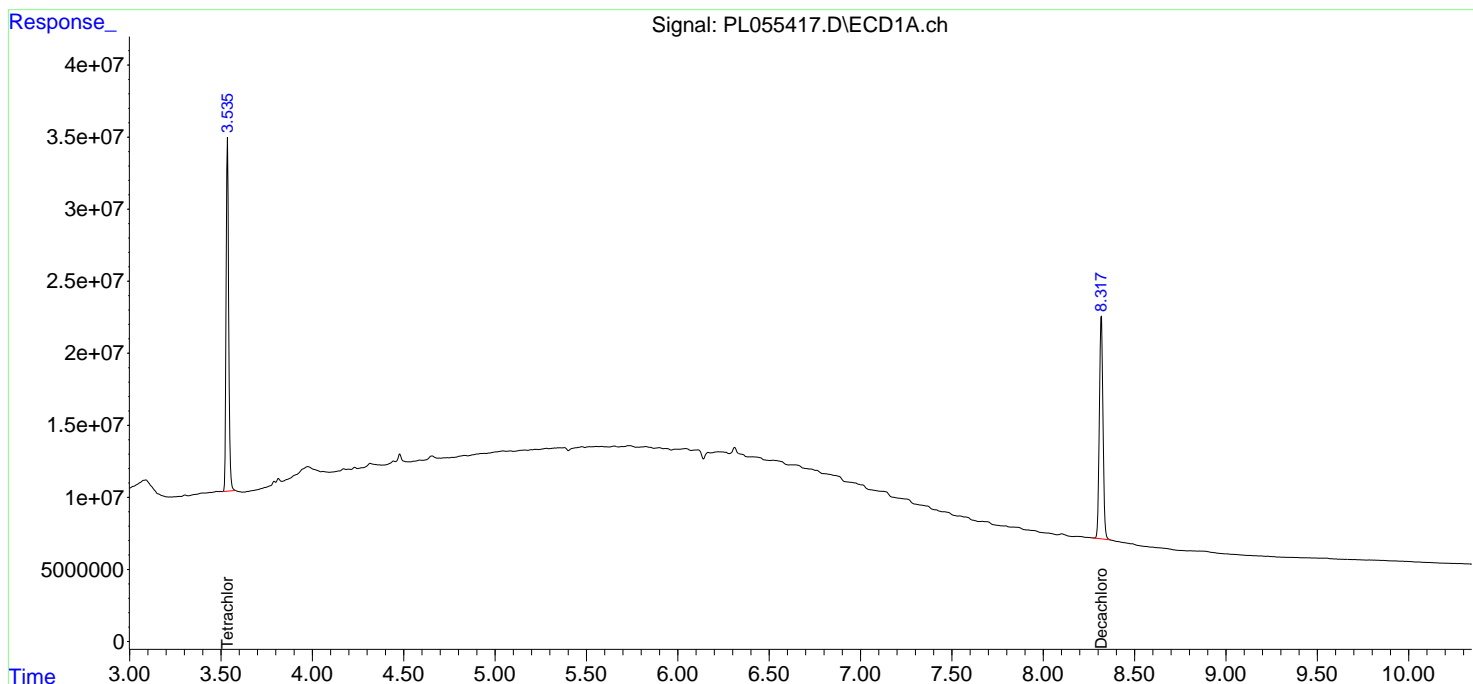
(f)=RT Delta > 1/2 Window (#)=Amounts differ by > 25% (m)=manual int.

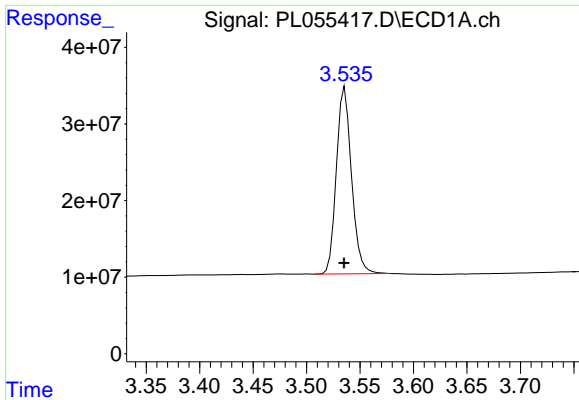
Data Path : Z:\pestpcbsrv\HPCHEM1\ECD\_L\Data\PL123119\  
 Data File : PL055417.D  
 Signal(s) : Signal #1: ECD1A.ch Signal #2: ECD2B.ch  
 Acq On : 31 Dec 2019 13:26  
 Operator : SG\AJ  
 Sample : PB125811BL  
 Misc :  
 ALS Vial : 9 Sample Multiplier: 1

Instrument :  
 ECD\_L  
 ClientSampled :  
 PB125811BL

Integration File signal 1: autoint1.e  
 Integration File signal 2: autoint2.e  
 Quant Time: Jan 01 00:40:13 2020  
 Quant Method : Z:\pestpcbsrv\HPCHEM1\ECD\_L\methods\PL122119.M  
 Quant Title : GC Extractables  
 QLast Update : Sat Dec 21 05:21:06 2019  
 Response via : Initial Calibration  
 Integrator: ChemStation

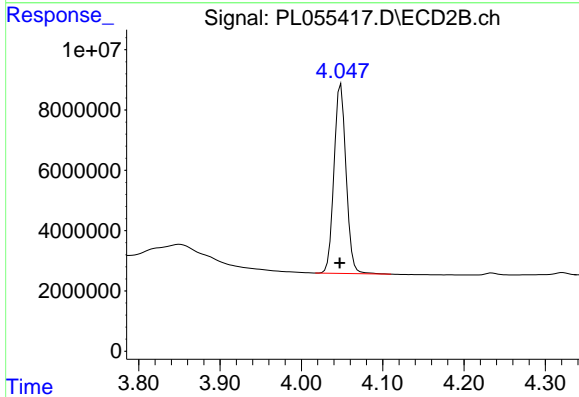
Volume Inj. : 1 µl  
 Signal #1 Phase : ZB-MR2 Signal #2 Phase: ZB-MR1  
 Signal #1 Info : 30M x 0.32mm x0.2 Signal #2 Info : 30M x 0.32mm x0.5µm



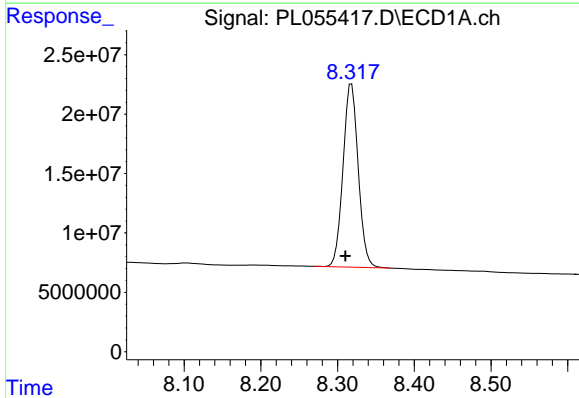


#1 Tetrachloro-m-xylene  
 R.T.: 3.536 min  
 Delta R.T.: 0.000 min  
 Response: 240576276  
 Conc: 22.88 ng/ml

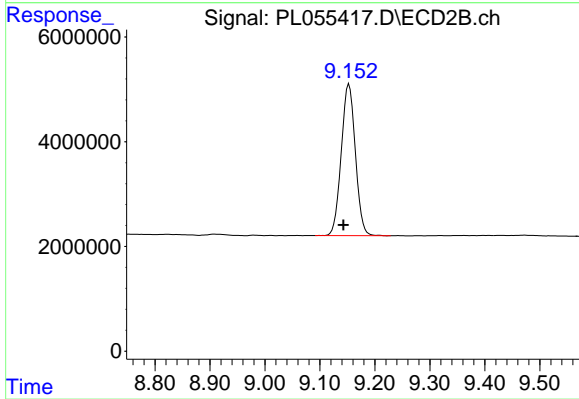
Instrument :  
 ECD\_L  
 ClientSampleId :  
 PB125811BL



#1 Tetrachloro-m-xylene  
 R.T.: 4.049 min  
 Delta R.T.: 0.002 min  
 Response: 64756191  
 Conc: 24.51 ng/ml



#28 Decachlorobiphenyl  
 R.T.: 8.318 min  
 Delta R.T.: 0.008 min  
 Response: 213278291  
 Conc: 22.99 ng/ml



#28 Decachlorobiphenyl  
 R.T.: 9.153 min  
 Delta R.T.: 0.010 min  
 Response: 51613505  
 Conc: 23.38 ng/ml