

Data Path : Z:\pestpcbsrv\HPCHEM1\ECD_L\Data\PL123120\
 Data File : PL063879.D
 Signal(s) : Signal #1: ECD1A.ch Signal #2: ECD2B.ch
 Acq On : 31 Dec 2020 12:12
 Operator : AR\AJ
 Sample : I.BLK
 Misc :
 ALS Vial : 2 Sample Multiplier: 1

Instrument :
 ECD_L
 ClientSampleId :

Integration File signal 1: autoint1.e
 Integration File signal 2: autoint2.e
 Quant Time: Dec 31 17:11:06 2020
 Quant Method : Z:\pestpcbsrv\HPCHEM1\ECD_L\methods\PL122220.M
 Quant Title : GC Extractables
 QLast Update : Tue Dec 22 14:02:42 2020
 Response via : Initial Calibration
 Integrator: ChemStation

Volume Inj. : 1 µl
 Signal #1 Phase : ZB-MR2 Signal #2 Phase: ZB-MR1
 Signal #1 Info : 30M x 0.32mm x0.2 Signal #2 Info : 30M x 0.32mm x0.5µm

Compound	RT#1	RT#2	Resp#1	Resp#2	ng/ml	ng/ml
System Monitoring Compounds						
1) SA Tetrachlo...	3.437	4.110	75894478	61095048	25.315	23.930
28) SA Decachlor...	8.176	9.266	64161378	41713366	23.288	21.157
Target Compounds						
2) A alpha-BHC	3.889	0.000	5515699	0	1.105	N.D. #
6) B beta-BHC	0.000	4.989	0	6954253	N.D.	3.962 #

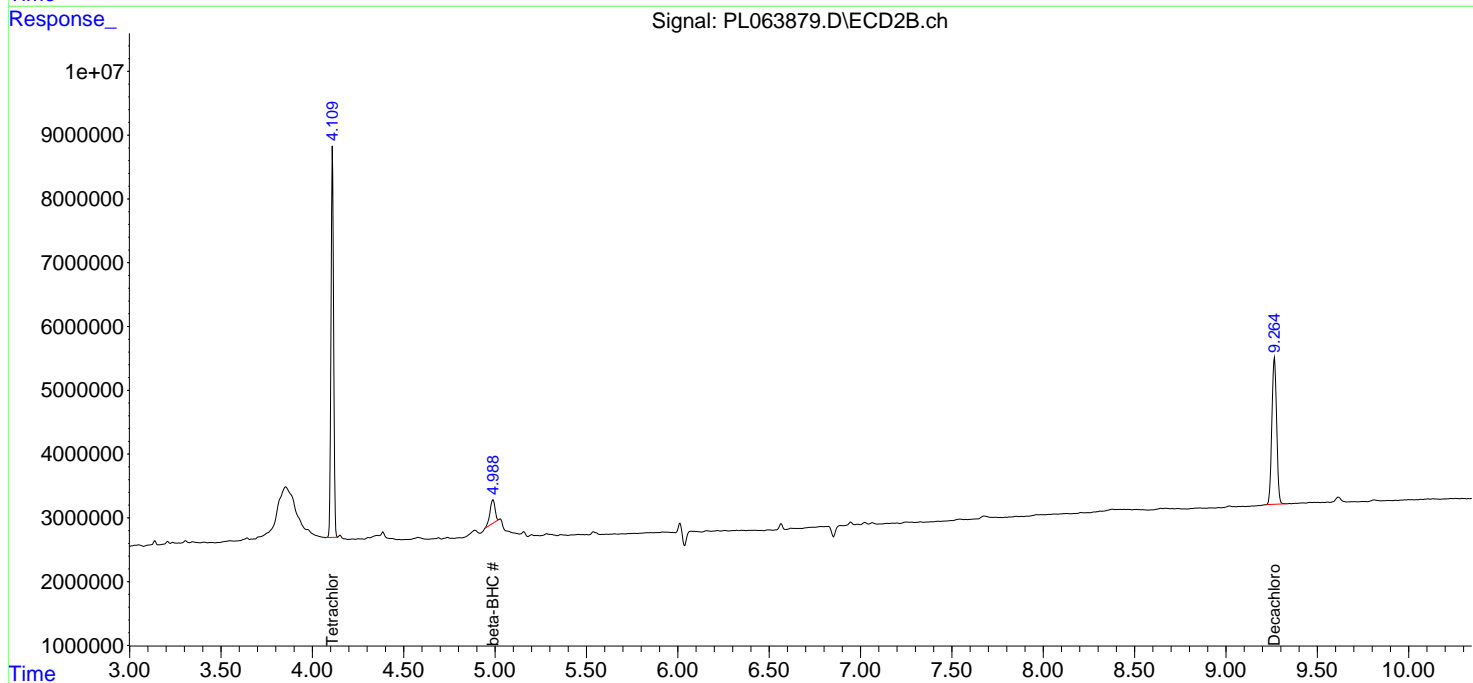
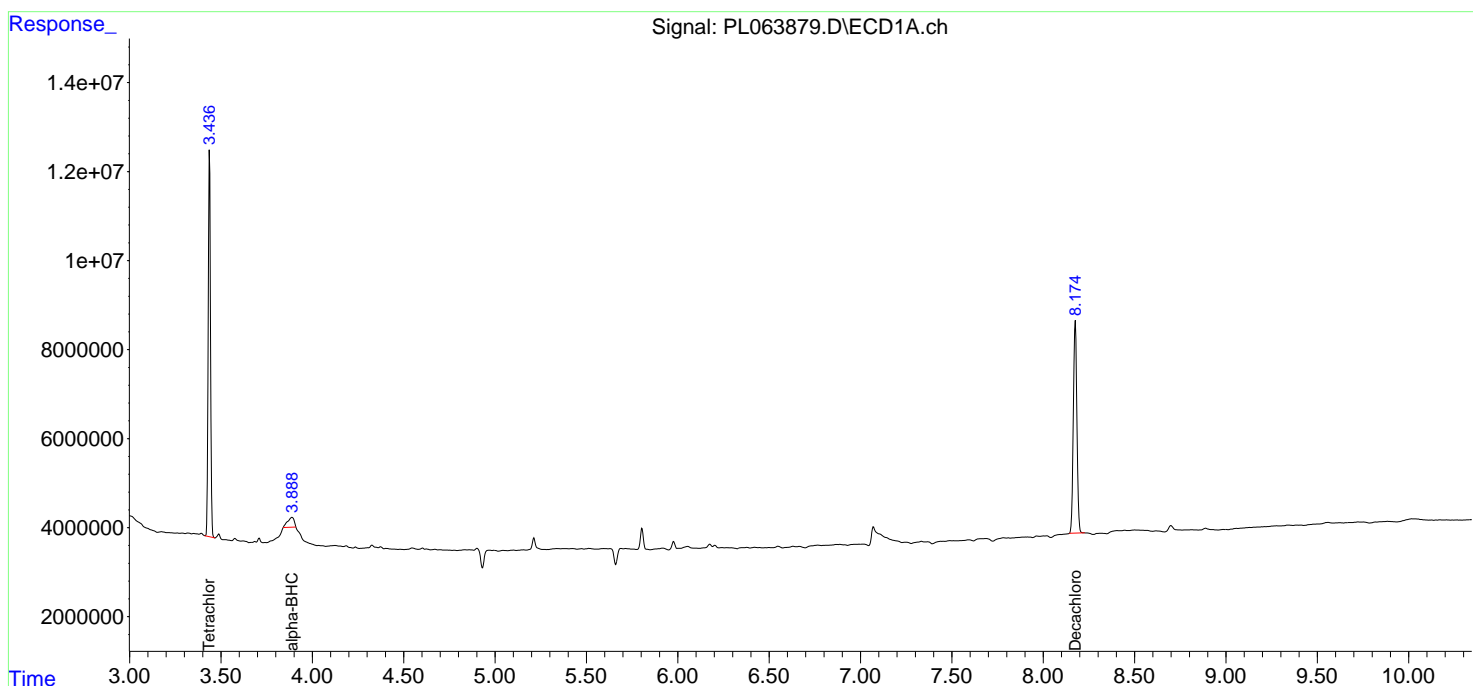
(f)=RT Delta > 1/2 Window (#)=Amounts differ by > 25% (m)=manual int.

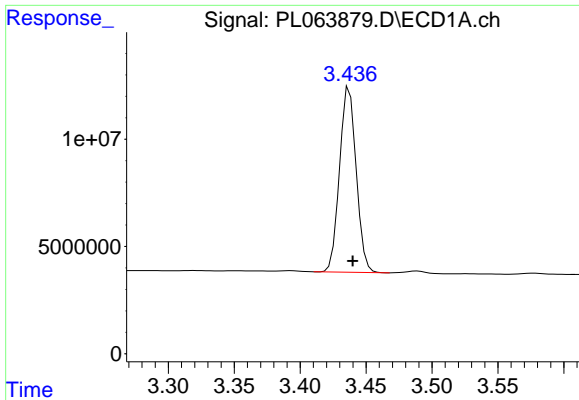
Data Path : Z:\pestpcbsrv\HPCHEM1\ECD_L\Data\PL123120\
 Data File : PL063879.D
 Signal(s) : Signal #1: ECD1A.ch Signal #2: ECD2B.ch
 Acq On : 31 Dec 2020 12:12
 Operator : AR\AJ
 Sample : I.BLK
 Misc :
 ALS Vial : 2 Sample Multiplier: 1

Instrument :
 ECD_L
 ClientSampled :

Integration File signal 1: autoint1.e
 Integration File signal 2: autoint2.e
 Quant Time: Dec 31 17:11:06 2020
 Quant Method : Z:\pestpcbsrv\HPCHEM1\ECD_L\methods\PL122220.M
 Quant Title : GC Extractables
 QLast Update : Tue Dec 22 14:02:42 2020
 Response via : Initial Calibration
 Integrator: ChemStation

Volume Inj. : 1 µl
 Signal #1 Phase : ZB-MR2 Signal #2 Phase: ZB-MR1
 Signal #1 Info : 30M x 0.32mm x0.2 Signal #2 Info : 30M x 0.32mm x0.5µm

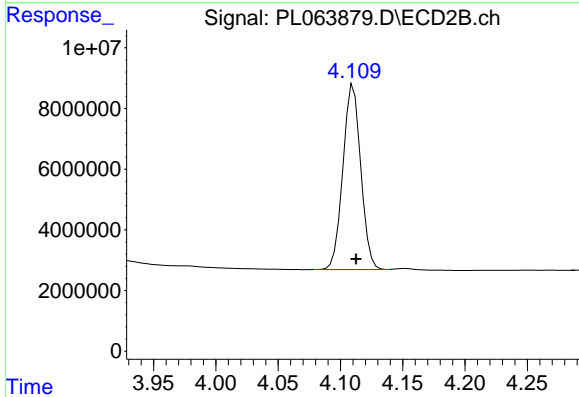




#1 Tetrachloro-m-xylene

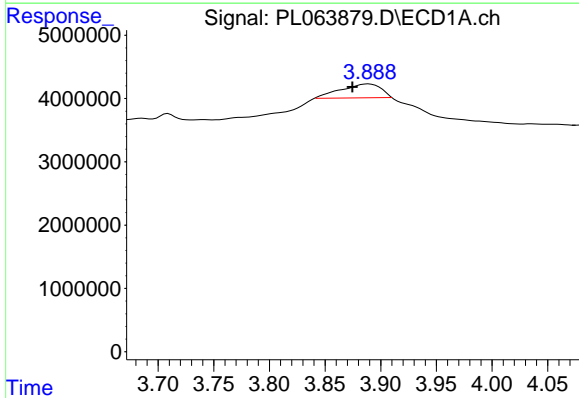
R.T.: 3.437 min
 Delta R.T.: -0.003 min
 Response: 75894478
 Conc: 25.32 ng/ml

Instrument :
 ECD_L
 ClientSampled :



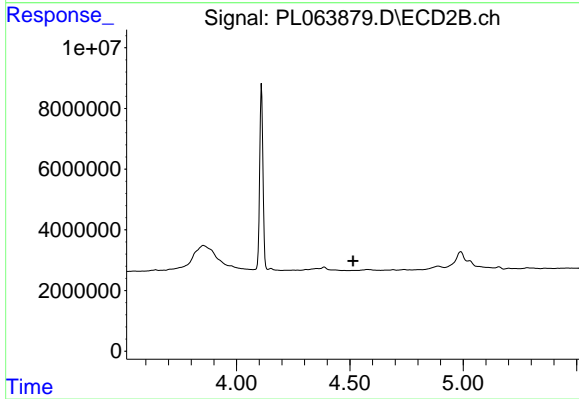
#1 Tetrachloro-m-xylene

R.T.: 4.110 min
 Delta R.T.: -0.002 min
 Response: 61095048
 Conc: 23.93 ng/ml



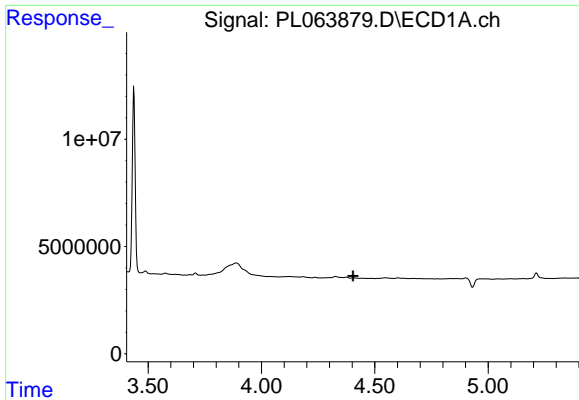
#2 alpha-BHC

R.T.: 3.889 min
 Delta R.T.: 0.014 min
 Response: 5515699
 Conc: 1.10 ng/ml



#2 alpha-BHC

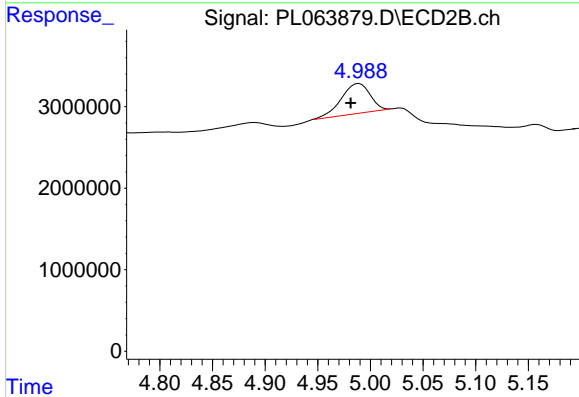
R.T.: 0.000 min
 Exp R.T. : 4.514 min
 Response: 0
 Conc: N.D.



#6 beta-BHC

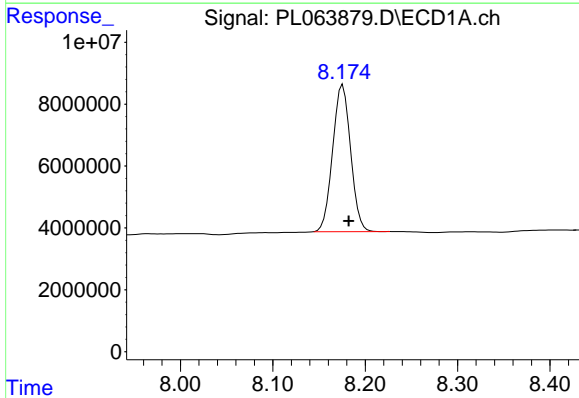
R.T.: 0.000 min
 Exp R.T.: 4.404 min
 Response: 0
 Conc: N.D.

Instrument :
 ECD_L
 ClientSampleId :



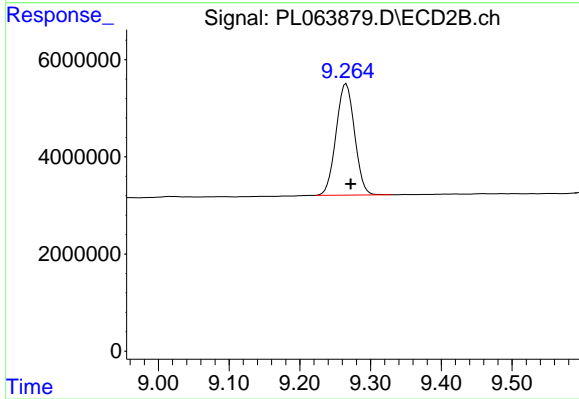
#6 beta-BHC

R.T.: 4.989 min
 Delta R.T.: 0.008 min
 Response: 6954253
 Conc: 3.96 ng/ml



#28 Decachlorobiphenyl

R.T.: 8.176 min
 Delta R.T.: -0.007 min
 Response: 64161378
 Conc: 23.29 ng/ml



#28 Decachlorobiphenyl

R.T.: 9.266 min
 Delta R.T.: -0.006 min
 Response: 41713366
 Conc: 21.16 ng/ml