

Data Path : Z:\pestpcbsrv\HPCHEM1\ECD\_L\Data\PL062220\  
 Data File : PL059389.D  
 Signal(s) : Signal #1: ECD1A.ch Signal #2: ECD2B.ch  
 Acq On : 22 Jun 2020 11:12  
 Operator : AJ\MA  
 Sample : I.BLK  
 Misc :  
 ALS Vial : 2 Sample Multiplier: 1

Instrument :  
 ECD\_L  
 ClientSampleId :  
 I.BLK

Integration File signal 1: autoint1.e  
 Integration File signal 2: autoint2.e  
 Quant Time: Jun 22 14:12:30 2020  
 Quant Method : Z:\pestpcbsrv\HPCHEM1\ECD\_L\methods\PL062220.M  
 Quant Title : GC Extractables  
 QLast Update : Mon Jun 22 14:09:48 2020  
 Response via : Initial Calibration  
 Integrator: ChemStation

Volume Inj. : 1 µl  
 Signal #1 Phase : ZB-MR2 Signal #2 Phase: ZB-MR1  
 Signal #1 Info : 30M x 0.32mm x0.2 Signal #2 Info : 30M x 0.32mm x0.5µm

| Compound                    | RT#1  | RT#2  | Resp#1   | Resp#2   | ng/ml  | ng/ml  |
|-----------------------------|-------|-------|----------|----------|--------|--------|
| -----                       |       |       |          |          |        |        |
| System Monitoring Compounds |       |       |          |          |        |        |
| 1) SA Tetrachlo...          | 3.517 | 4.071 | 42683158 | 61577902 | 23.751 | 23.858 |
| 28) SA Decachlor...         | 8.290 | 9.181 | 40902246 | 56738366 | 24.020 | 24.781 |

Target Compounds

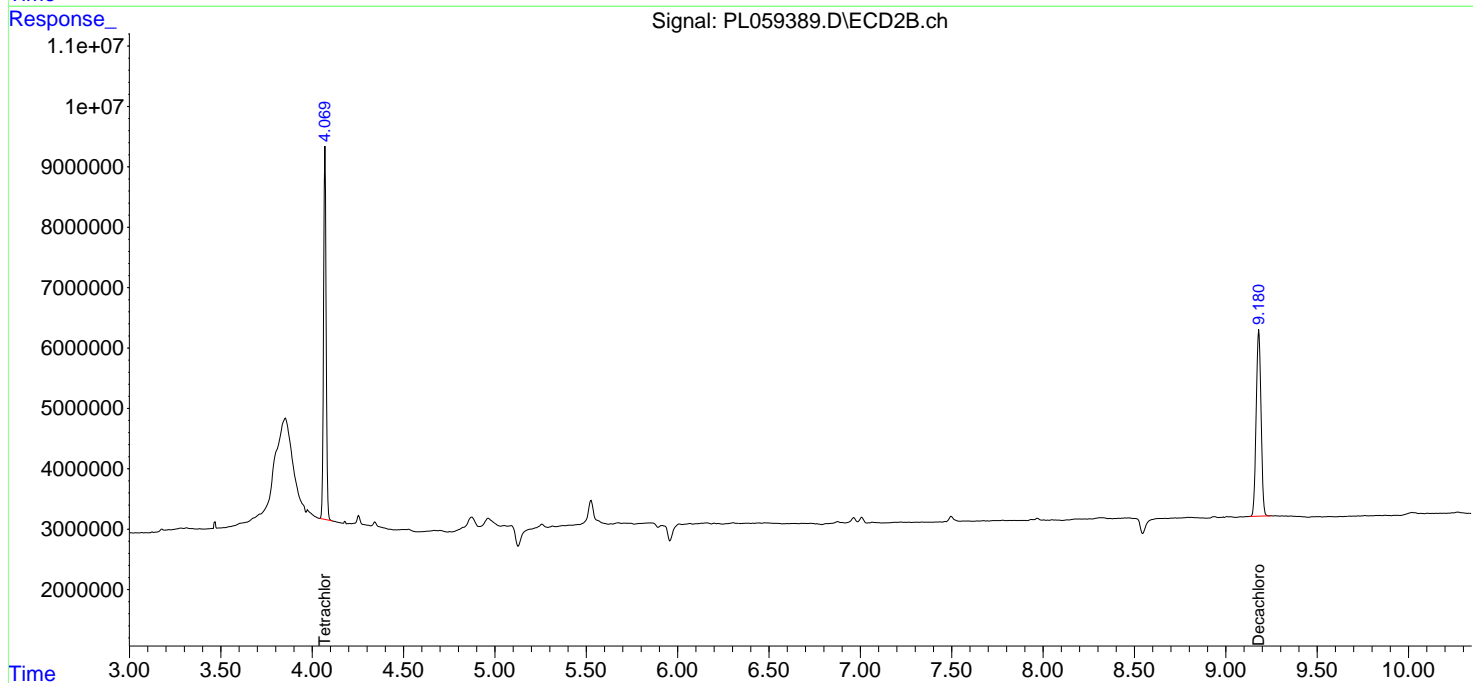
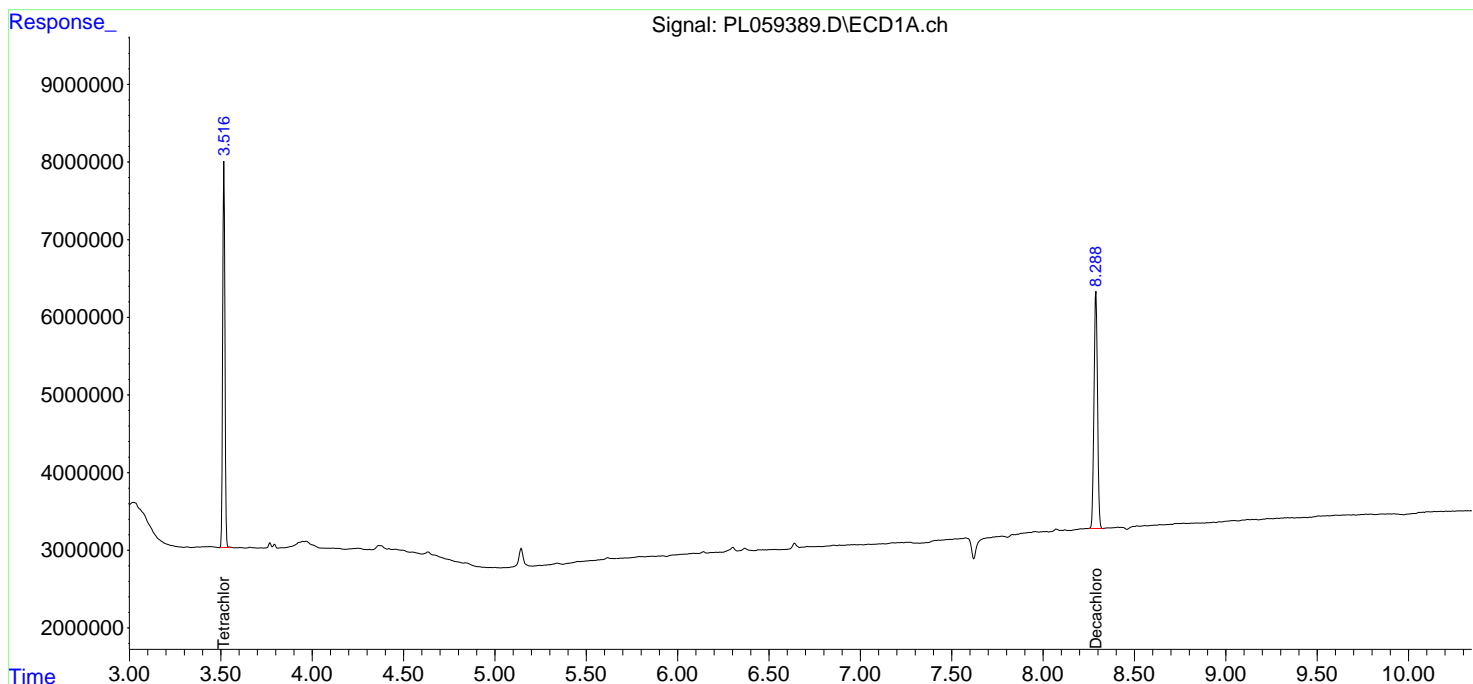
(f)=RT Delta > 1/2 Window (#)=Amounts differ by > 25% (m)=manual int.

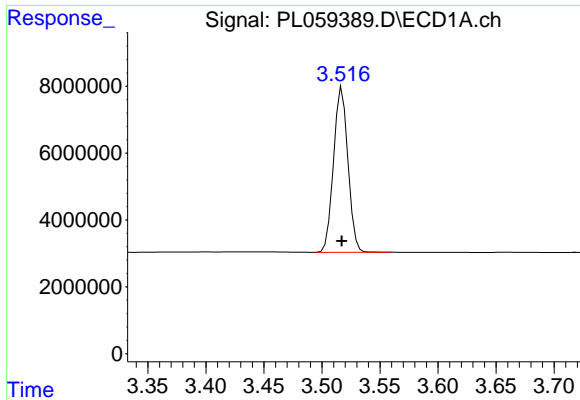
Data Path : Z:\pestpcbsrv\HPCHEM1\ECD\_L\Data\PL062220\  
 Data File : PL059389.D  
 Signal(s) : Signal #1: ECD1A.ch Signal #2: ECD2B.ch  
 Acq On : 22 Jun 2020 11:12  
 Operator : AJ\MA  
 Sample : I.BLK  
 Misc :  
 ALS Vial : 2 Sample Multiplier: 1

Instrument :  
 ECD\_L  
 ClientSampled :  
 I.BLK

Integration File signal 1: autoint1.e  
 Integration File signal 2: autoint2.e  
 Quant Time: Jun 22 14:12:30 2020  
 Quant Method : Z:\pestpcbsrv\HPCHEM1\ECD\_L\methods\PL062220.M  
 Quant Title : GC Extractables  
 QLast Update : Mon Jun 22 14:09:48 2020  
 Response via : Initial Calibration  
 Integrator: ChemStation

Volume Inj. : 1 µl  
 Signal #1 Phase : ZB-MR2 Signal #2 Phase: ZB-MR1  
 Signal #1 Info : 30M x 0.32mm x0.2 Signal #2 Info : 30M x 0.32mm x0.5µm

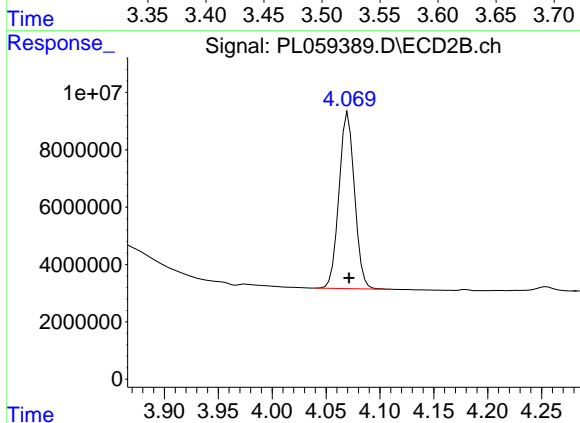




#1 Tetrachloro-m-xylene

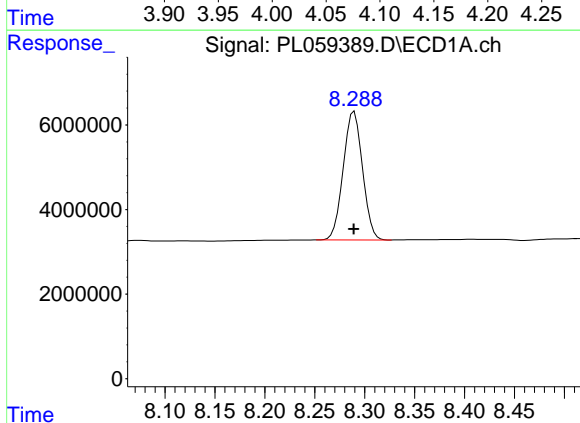
R.T.: 3.517 min  
 Delta R.T.: 0.000 min  
 Response: 42683158  
 Conc: 23.75 ng/ml

Instrument :  
 ECD\_L  
 ClientSampled :  
 I.BLK



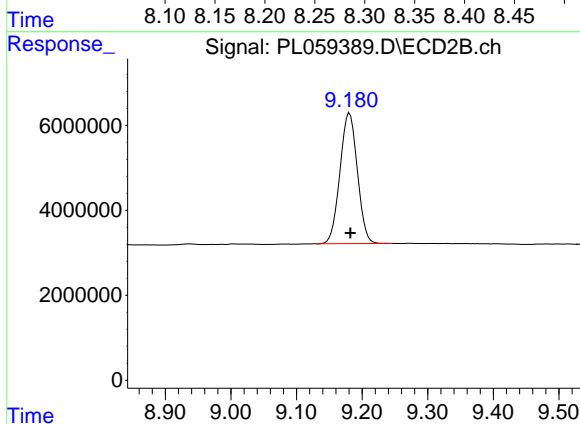
#1 Tetrachloro-m-xylene

R.T.: 4.071 min  
 Delta R.T.: 0.000 min  
 Response: 61577902  
 Conc: 23.86 ng/ml



#28 Decachlorobiphenyl

R.T.: 8.290 min  
 Delta R.T.: 0.000 min  
 Response: 40902246  
 Conc: 24.02 ng/ml



#28 Decachlorobiphenyl

R.T.: 9.181 min  
 Delta R.T.: -0.001 min  
 Response: 56738366  
 Conc: 24.78 ng/ml