

Data Path : Z:\pestpcbsrv\HPCHEM1\ECD_L\Data\PL062220\
 Data File : PL059390.D
 Signal(s) : Signal #1: ECD1A.ch Signal #2: ECD2B.ch
 Acq On : 22 Jun 2020 11:26
 Operator : AJ\MA
 Sample : PEM
 Misc :
 ALS Vial : 3 Sample Multiplier: 1

Instrument :
 ECD_L
 ClientSampled :
 PEM

Manual Integrations
 APPROVED

mohammad
 6/24/2020 11:43:55 AM

Integration File signal 1: autoint1.e
 Integration File signal 2: autoint2.e
 Quant Time: Jun 22 14:12:43 2020
 Quant Method : Z:\pestpcbsrv\HPCHEM1\ECD_L\methods\PL062220.M
 Quant Title : GC Extractables
 QLast Update : Mon Jun 22 14:09:48 2020
 Response via : Initial Calibration
 Integrator: ChemStation

Volume Inj. : 1 µl
 Signal #1 Phase : ZB-MR2 Signal #2 Phase: ZB-MR1
 Signal #1 Info : 30M x 0.32mm x0.2 Signal #2 Info : 30M x 0.32mm x0.5µm

Compound	RT#1	RT#2	Resp#1	Resp#2	ng/ml	ng/ml

System Monitoring Compounds						
1) SA Tetrachlo...	3.517	4.070	34467018	49454451	19.179	19.161
28) SA Decachlor...	8.289	9.181	33509405	46451760	19.679	20.288
Target Compounds						
2) A alpha-BHC	3.958	4.463	22089180	29669243	8.558	8.709
3) MA gamma-BHC...	4.243	4.750	19495882	26774401	8.549	8.554
6) B beta-BHC	4.493	4.918	9955600	13665280	10.454	10.048
12) B 4,4'-DDE	5.692	6.419	264461	456423	0.182	0.169m
14) MA Endrin	6.084	6.796	69887107	112.0E6	45.996	45.336
16) A 4,4'-DDD	6.208	6.912	362043	691538	0.277	0.311m
17) MA 4,4'-DDT	6.451	7.214	130.6E6	211.1E6	99.027	92.877
20) A Methoxychlor	6.996	7.671	186.7E6	283.1E6	230.309	213.297
21) B Endrin ke...	7.229	7.824	956043	1332359	0.548	0.516

(f)=RT Delta > 1/2 Window (#)=Amounts differ by > 25% (m)=manual int.

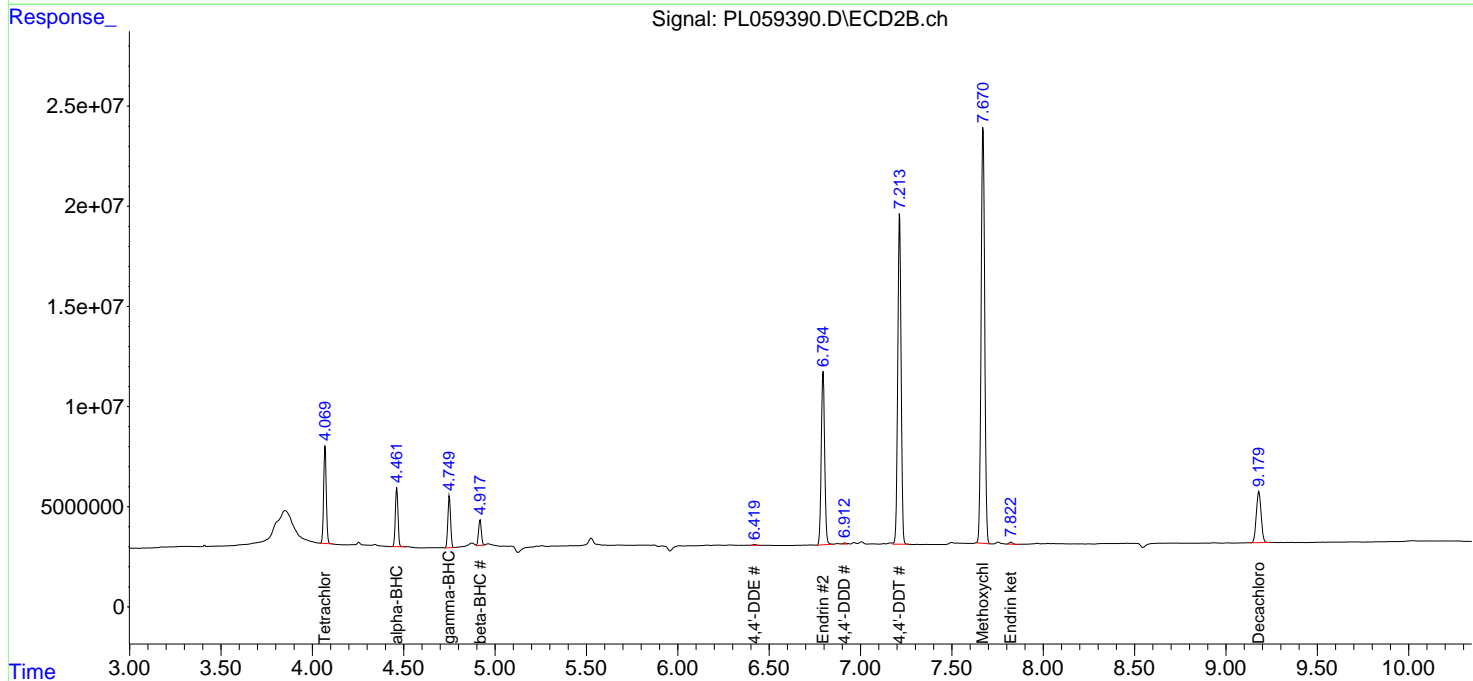
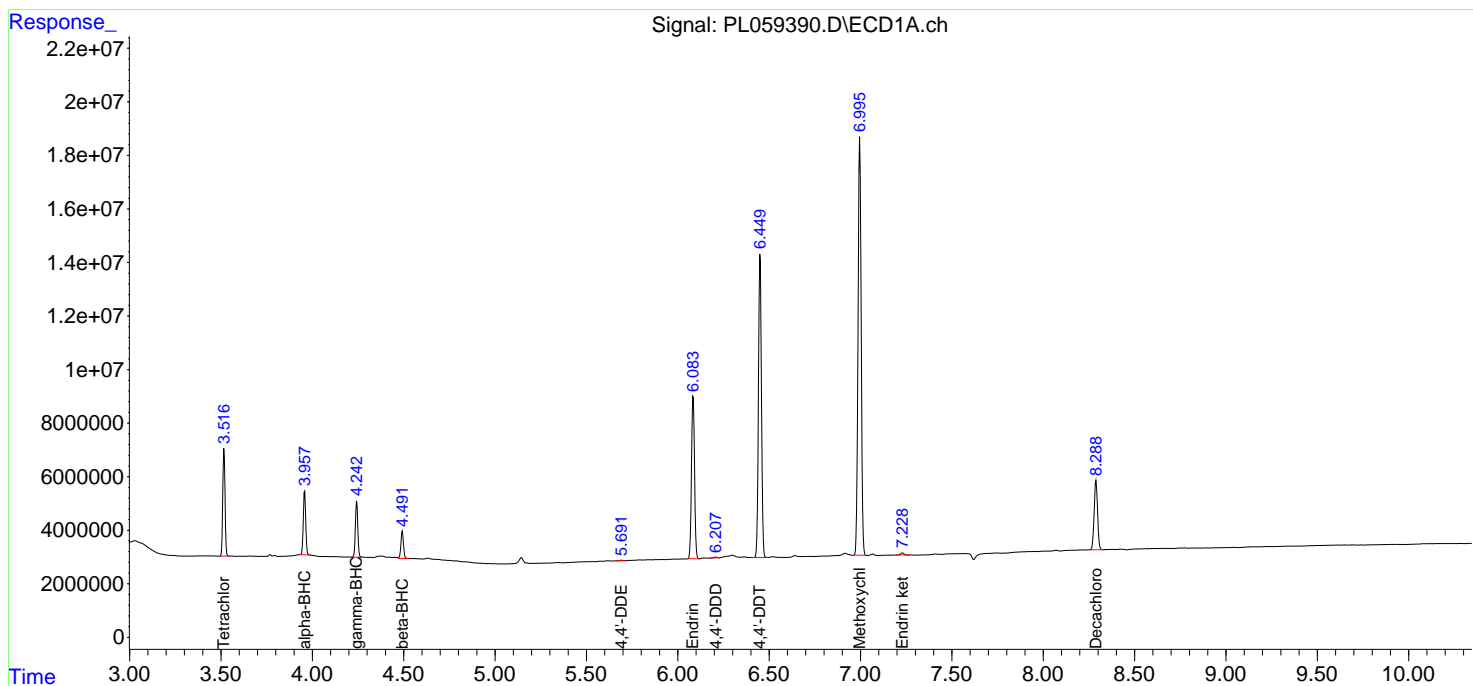
Data Path : Z:\pestpcbsrv\HPCHEM1\ECD_L\Data\PL062220\
 Data File : PL059390.D
 Signal(s) : Signal #1: ECD1A.ch Signal #2: ECD2B.ch
 Acq On : 22 Jun 2020 11:26
 Operator : AJ\MA
 Sample : PEM
 Misc :
 ALS Vial : 3 Sample Multiplier: 1

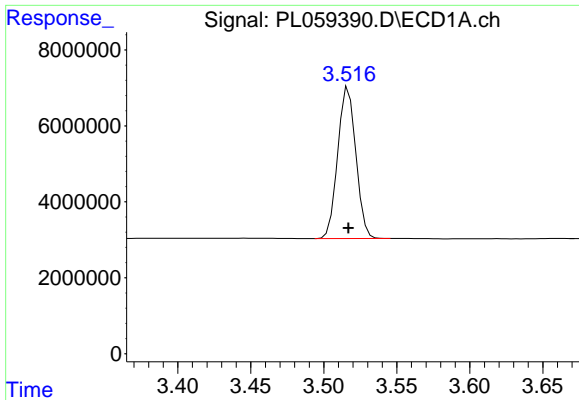
Instrument :
 ECD_L
 ClientSampled :
 PEM

Manual Integrations
APPROVED
 mohammad
 6/24/2020 11:43:55 AM

Integration File signal 1: autoint1.e
 Integration File signal 2: autoint2.e
 Quant Time: Jun 22 14:12:43 2020
 Quant Method : Z:\pestpcbsrv\HPCHEM1\ECD_L\methods\PL062220.M
 Quant Title : GC Extractables
 QLast Update : Mon Jun 22 14:09:48 2020
 Response via : Initial Calibration
 Integrator: ChemStation

Volume Inj. : 1 µl
 Signal #1 Phase : ZB-MR2 Signal #2 Phase: ZB-MR1
 Signal #1 Info : 30M x 0.32mm x0.2 Signal #2 Info : 30M x 0.32mm x0.5µm



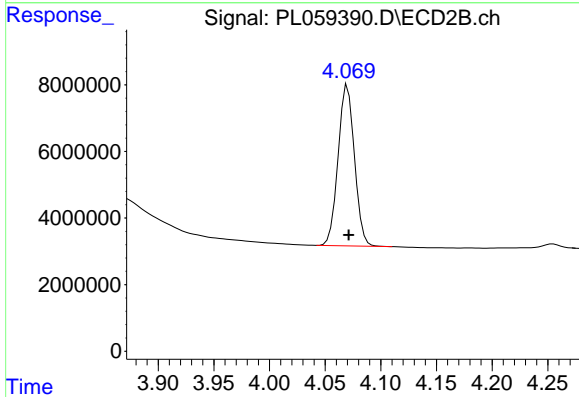


#1 Tetrachloro-m-xylene

R.T.: 3.517 min
 Delta R.T.: 0.000 min
 Response: 34467018
 Conc: 19.18 ng/ml

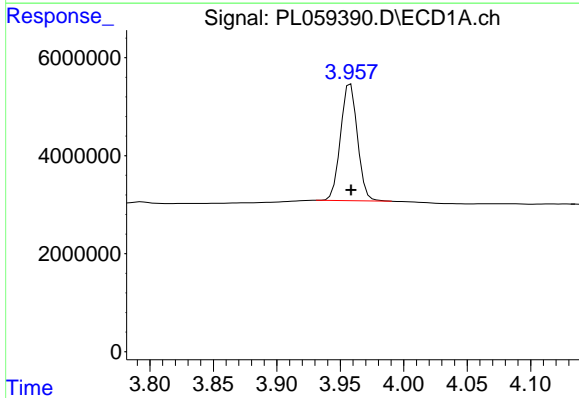
Instrument :
 ECD_L
 ClientSampled :
 PEM

Manual Integrations
 APPROVED
 mohammad
 6/24/2020 11:43:55 AM



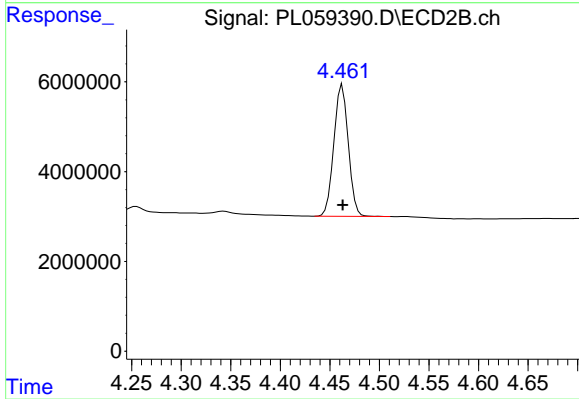
#1 Tetrachloro-m-xylene

R.T.: 4.070 min
 Delta R.T.: -0.001 min
 Response: 49454451
 Conc: 19.16 ng/ml



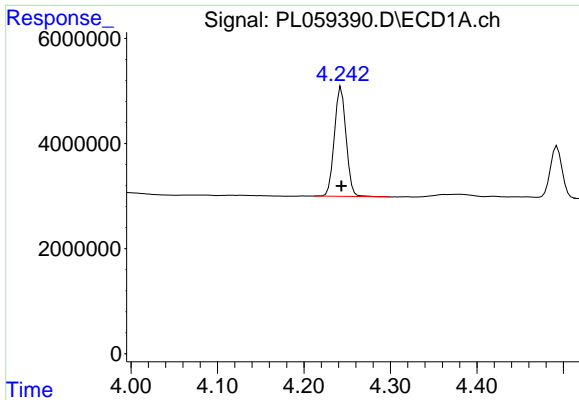
#2 alpha-BHC

R.T.: 3.958 min
 Delta R.T.: 0.000 min
 Response: 22089180
 Conc: 8.56 ng/ml



#2 alpha-BHC

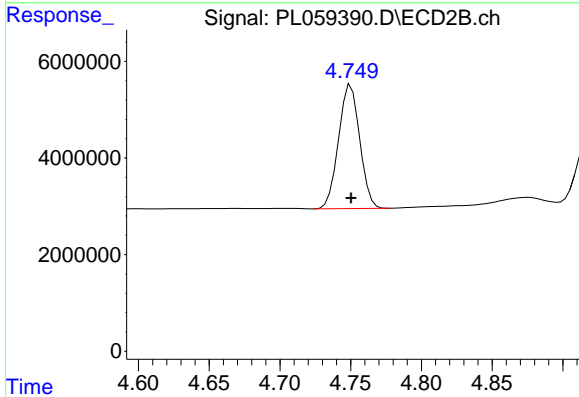
R.T.: 4.463 min
 Delta R.T.: 0.000 min
 Response: 29669243
 Conc: 8.71 ng/ml



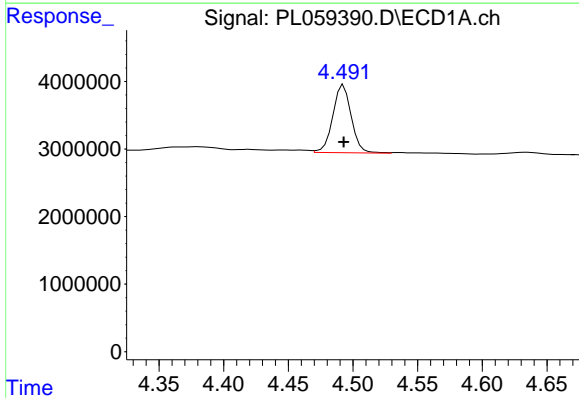
#3 gamma-BHC (Lindane)
 R.T.: 4.243 min
 Delta R.T.: 0.000 min
 Response: 19495882
 Conc: 8.55 ng/ml

Instrument :
 ECD_L
 ClientSampled :
 PEM

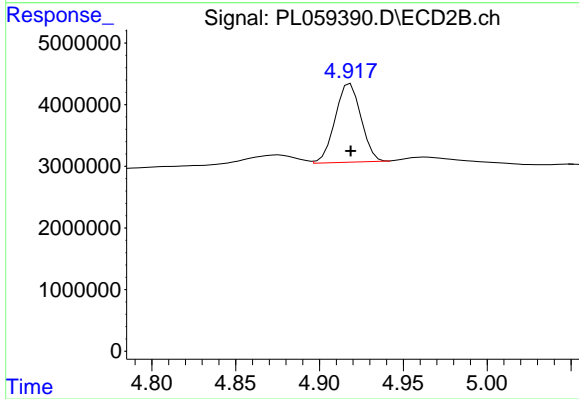
Manual Integrations
 APPROVED
 mohammad
 6/24/2020 11:43:55 AM



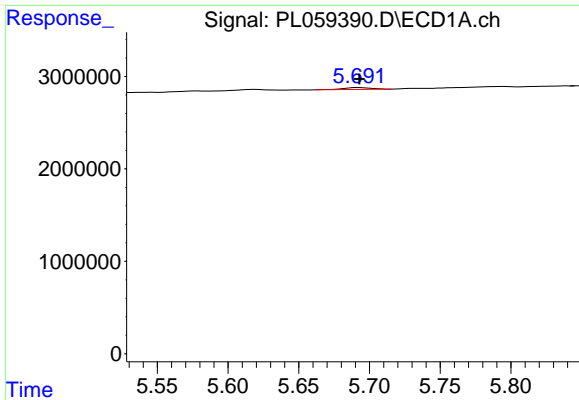
#3 gamma-BHC (Lindane)
 R.T.: 4.750 min
 Delta R.T.: 0.000 min
 Response: 26774401
 Conc: 8.55 ng/ml



#6 beta-BHC
 R.T.: 4.493 min
 Delta R.T.: 0.000 min
 Response: 9955600
 Conc: 10.45 ng/ml



#6 beta-BHC
 R.T.: 4.918 min
 Delta R.T.: 0.000 min
 Response: 13665280
 Conc: 10.05 ng/ml

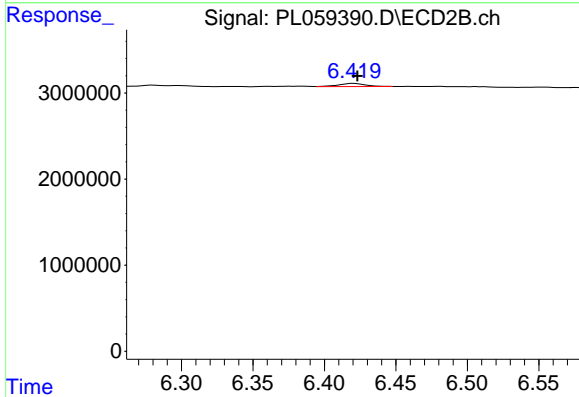


#12 4,4'-DDE

R.T.: 5.692 min
 Delta R.T.: 0.000 min
 Response: 264461
 Conc: 0.18 ng/ml

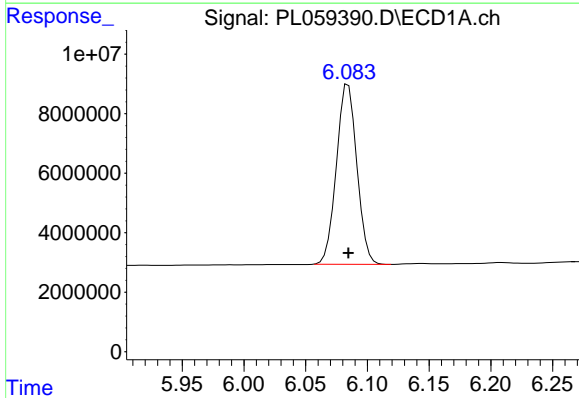
Instrument :
 ECD_L
 ClientSampled :
 PEM

Manual Integrations
 APPROVED
 mohammad
 6/24/2020 11:43:55 AM



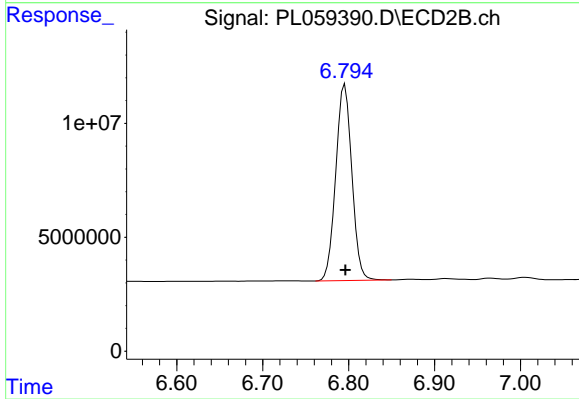
#12 4,4'-DDE

R.T.: 6.419 min
 Delta R.T.: -0.004 min
 Response: 456423
 Conc: 0.17 ng/ml m



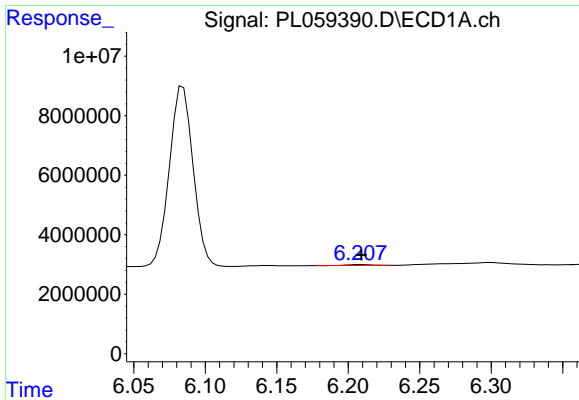
#14 Endrin

R.T.: 6.084 min
 Delta R.T.: 0.000 min
 Response: 69887107
 Conc: 46.00 ng/ml



#14 Endrin

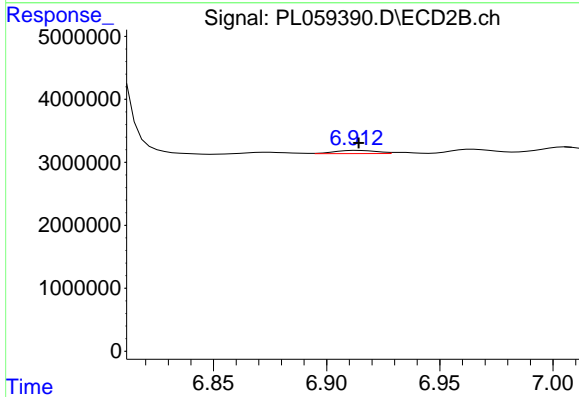
R.T.: 6.796 min
 Delta R.T.: 0.000 min
 Response: 111990548
 Conc: 45.34 ng/ml



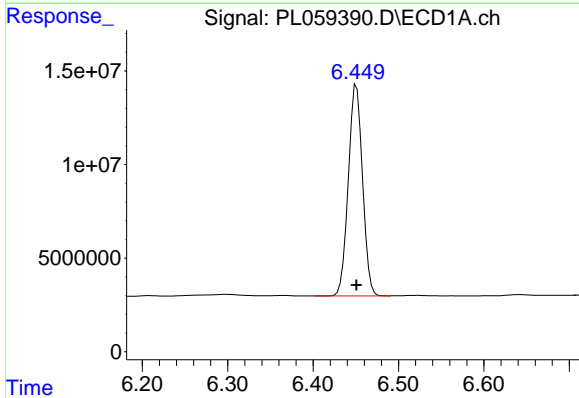
#16 4,4'-DDD
 R.T.: 6.208 min
 Delta R.T.: 0.000 min
 Response: 362043
 Conc: 0.28 ng/ml

Instrument :
 ECD_L
 ClientSampled :
 PEM

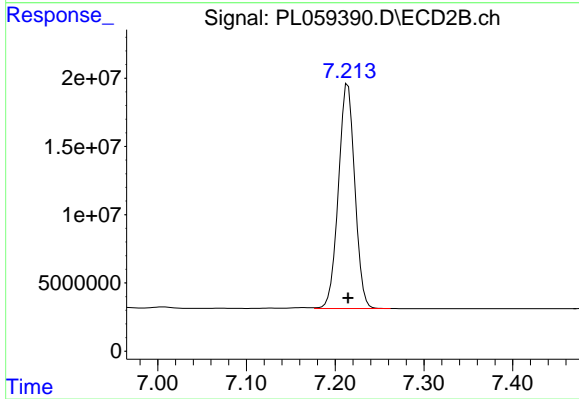
Manual Integrations
 APPROVED
 mohammad
 6/24/2020 11:43:55 AM



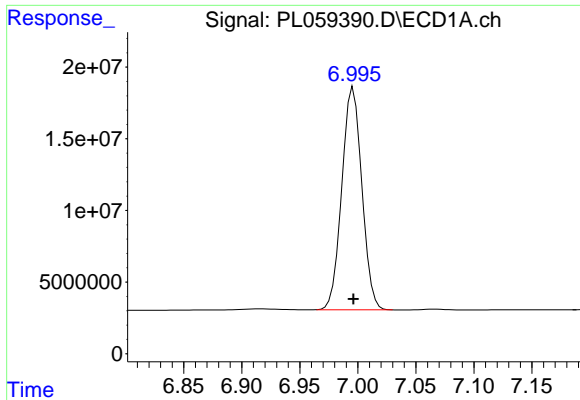
#16 4,4'-DDD
 R.T.: 6.912 min
 Delta R.T.: -0.002 min
 Response: 691538
 Conc: 0.31 ng/ml m



#17 4,4'-DDT
 R.T.: 6.451 min
 Delta R.T.: 0.000 min
 Response: 130571791
 Conc: 99.03 ng/ml



#17 4,4'-DDT
 R.T.: 7.214 min
 Delta R.T.: 0.000 min
 Response: 211110350
 Conc: 92.88 ng/ml



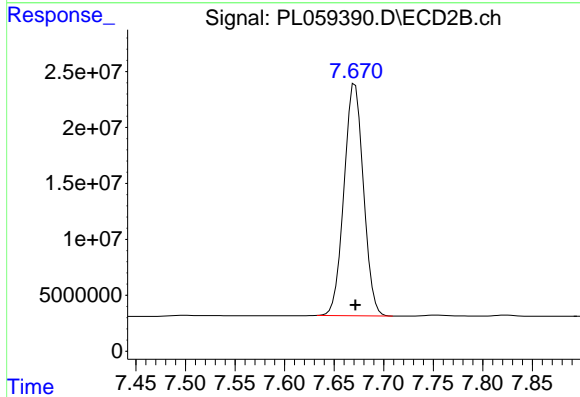
#20 Methoxychlor

R.T.: 6.996 min
 Delta R.T.: 0.000 min
 Response: 186651166
 Conc: 230.31 ng/ml

Instrument :
 ECD_L
 ClientSampled :
 PEM

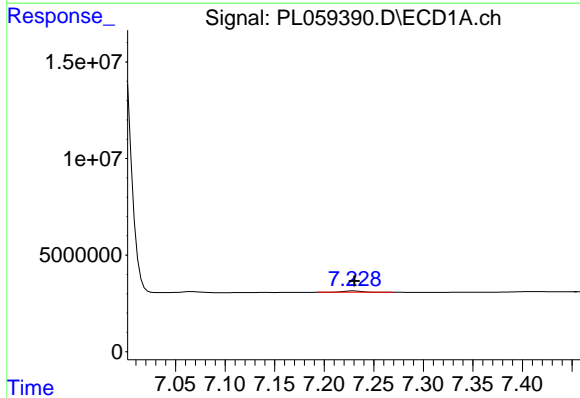
Manual Integrations
 APPROVED

mohammad
 6/24/2020 11:43:55 AM



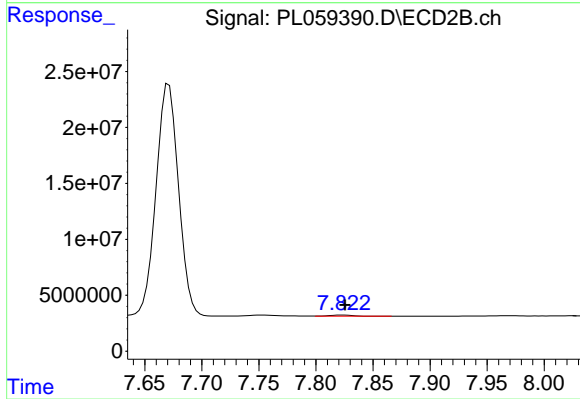
#20 Methoxychlor

R.T.: 7.671 min
 Delta R.T.: 0.000 min
 Response: 283143393
 Conc: 213.30 ng/ml



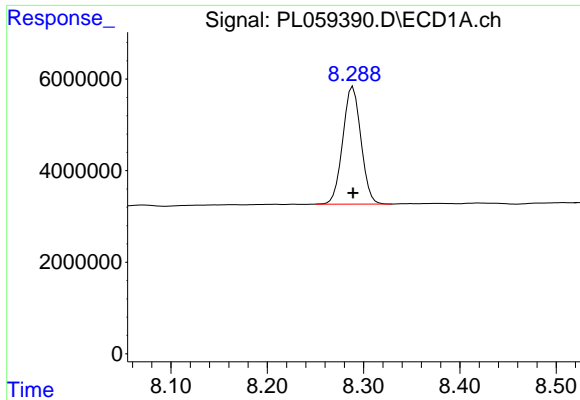
#21 Endrin ketone

R.T.: 7.229 min
 Delta R.T.: -0.001 min
 Response: 956043
 Conc: 0.55 ng/ml



#21 Endrin ketone

R.T.: 7.824 min
 Delta R.T.: -0.002 min
 Response: 1332359
 Conc: 0.52 ng/ml



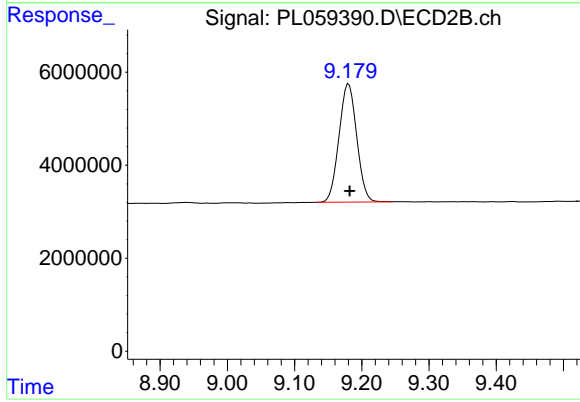
#28 Decachlorobiphenyl

R.T.: 8.289 min
Delta R.T.: 0.000 min
Response: 33509405
Conc: 19.68 ng/ml

Instrument :
ECD_L
ClientSampled :
PEM

Manual Integrations
APPROVED

mohammad
6/24/2020 11:43:55 AM



#28 Decachlorobiphenyl

R.T.: 9.181 min
Delta R.T.: -0.002 min
Response: 46451760
Conc: 20.29 ng/ml