

Data Path : Z:\pestpcbsrv\HPCHEM1\ECD\_L\Data\PL062220\  
 Data File : PL059391.D  
 Signal(s) : Signal #1: ECD1A.ch Signal #2: ECD2B.ch  
 Acq On : 22 Jun 2020 11:40  
 Operator : AJ\MA  
 Sample : RESCHK  
 Misc :  
 ALS Vial : 4 Sample Multiplier: 1

Instrument :  
 ECD\_L  
 ClientSampleID :  
 RESCHK

Manual Integrations  
 APPROVED

mohammad  
 6/24/2020 11:43:57 AM

Integration File signal 1: autoint1.e  
 Integration File signal 2: autoint2.e  
 Quant Time: Jun 22 14:17:32 2020  
 Quant Method : Z:\pestpcbsrv\HPCHEM1\ECD\_L\methods\PL062220.M  
 Quant Title : GC Extractables  
 QLast Update : Mon Jun 22 14:09:48 2020  
 Response via : Initial Calibration  
 Integrator: ChemStation

Volume Inj. : 1 µl  
 Signal #1 Phase : ZB-MR2 Signal #2 Phase: ZB-MR1  
 Signal #1 Info : 30M x 0.32mm x0.2 Signal #2 Info : 30M x 0.32mm x0.5µm

Compound	RT#1	RT#2	Resp#1	Resp#2	ng/ml	ng/ml
-----						
System Monitoring Compounds						
1) SA Tetrachlo...	3.517	4.070	32392551	45963372	18.025	17.808
28) SA Decachlor...	8.289	9.181	30788529	42369732	18.081	18.505
Target Compounds						
9) A Endosulfan I	5.582	6.319	12312163	22984868	8.369m	8.469
10) B gamma-Chl...	5.470	6.195	13267546	25972097	8.650m	8.867
12) B 4,4'-DDE	5.694	6.423	23942668	44081414	16.477	16.322
13) MA Dieldrin	5.827	6.577	26492786	47326942	16.793	16.811
19) B Endosulfa...	6.739	7.352	25300607	40389105	16.664	16.687
20) A Methoxychlor	6.997	7.672	69362278	108.1E6	85.586	81.422
21) B Endrin ke...	7.230	7.825	29163330	43771694	16.726	16.945
-----						

(f)=RT Delta > 1/2 Window (#)=Amounts differ by > 25% (m)=manual int.

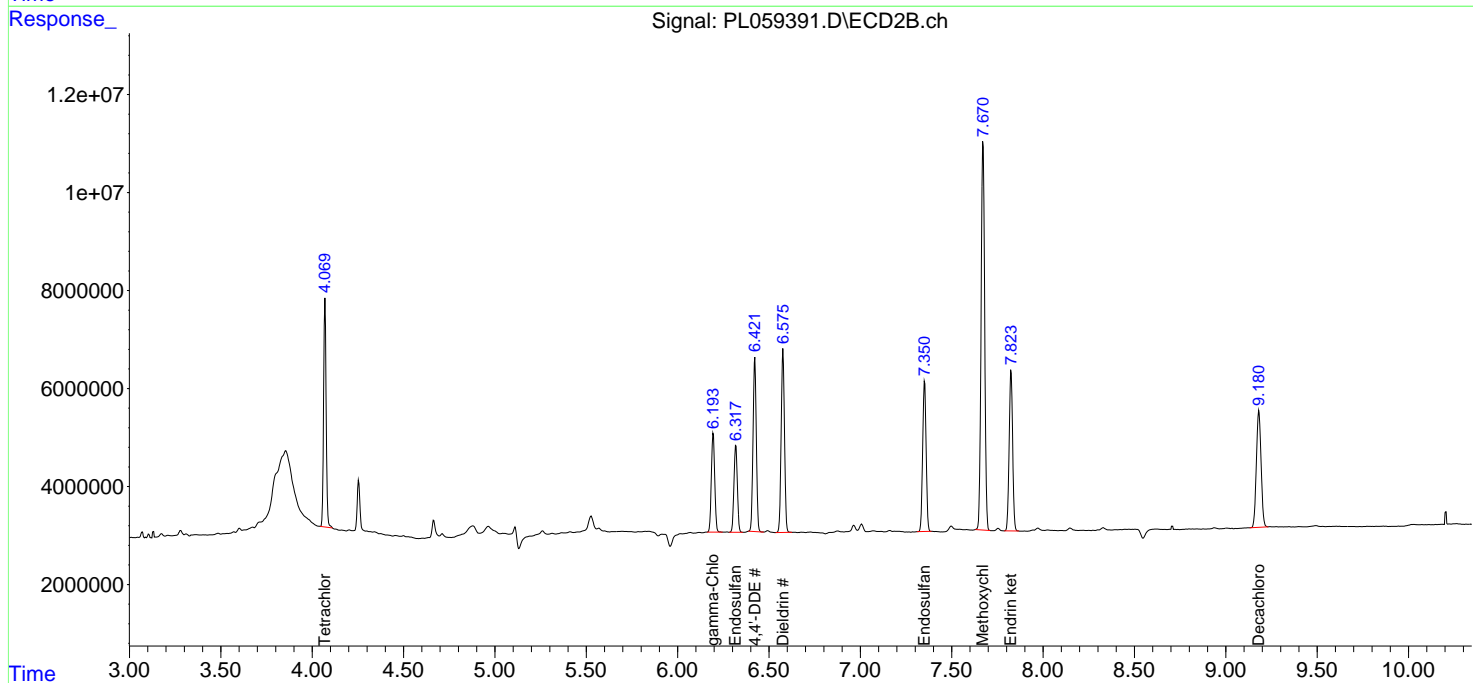
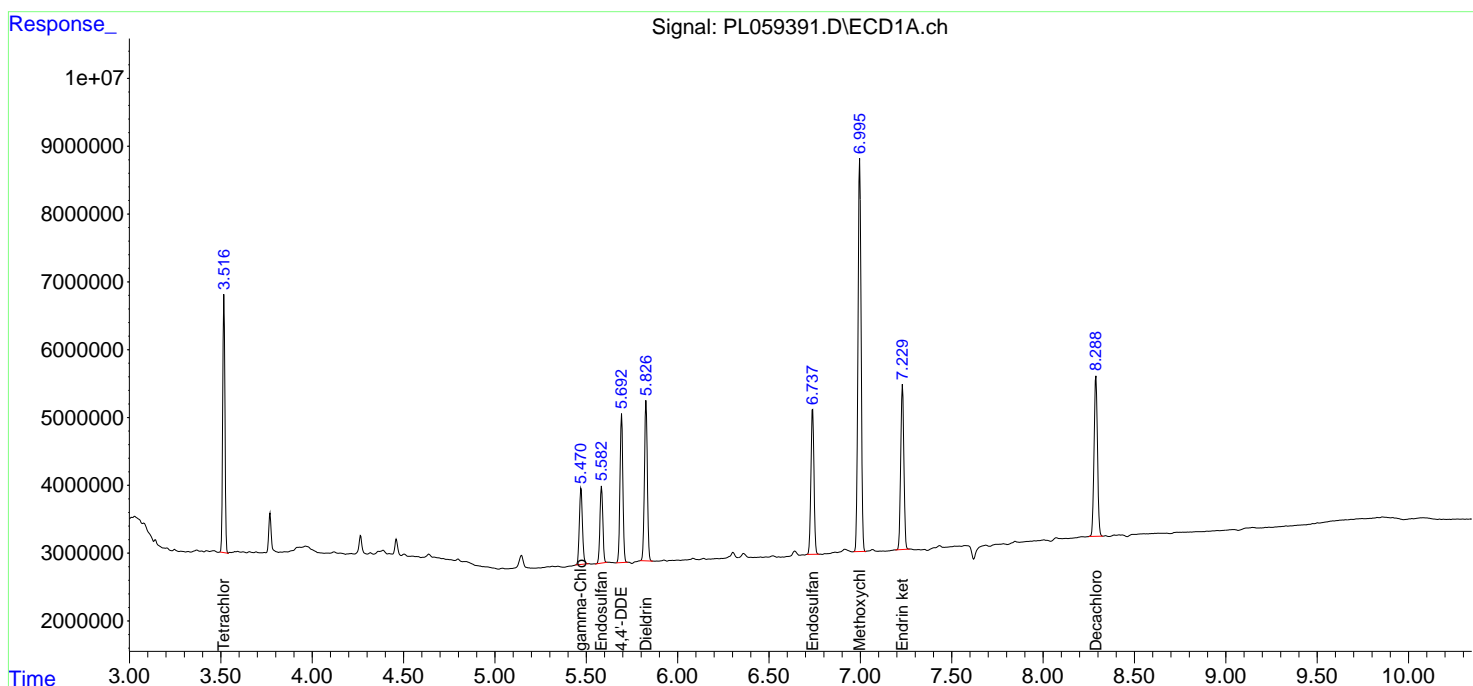
Data Path : Z:\pestpcbsrv\HPCHEM1\ECD\_L\Data\PL062220\  
 Data File : PL059391.D  
 Signal(s) : Signal #1: ECD1A.ch Signal #2: ECD2B.ch  
 Acq On : 22 Jun 2020 11:40  
 Operator : AJ\MA  
 Sample : RESCHK  
 Misc :  
 ALS Vial : 4 Sample Multiplier: 1

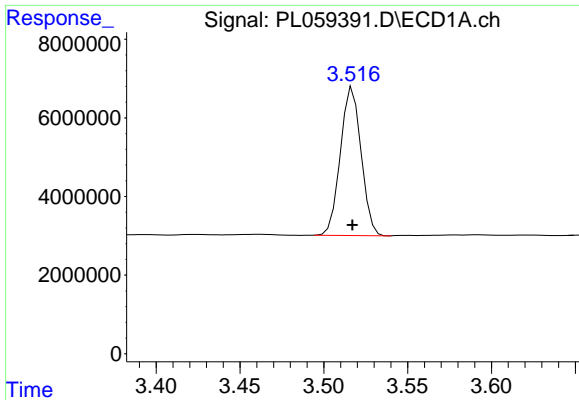
Instrument :  
 ECD\_L  
 ClientSampled :  
 RESCHK

Manual Integrations  
**APPROVED**  
 mohammad  
 6/24/2020 11:43:57 AM

Integration File signal 1: autoint1.e  
 Integration File signal 2: autoint2.e  
 Quant Time: Jun 22 14:17:32 2020  
 Quant Method : Z:\pestpcbsrv\HPCHEM1\ECD\_L\methods\PL062220.M  
 Quant Title : GC Extractables  
 QLast Update : Mon Jun 22 14:09:48 2020  
 Response via : Initial Calibration  
 Integrator: ChemStation

Volume Inj. : 1 µl  
 Signal #1 Phase : ZB-MR2 Signal #2 Phase: ZB-MR1  
 Signal #1 Info : 30M x 0.32mm x0.2 Signal #2 Info : 30M x 0.32mm x0.5µm

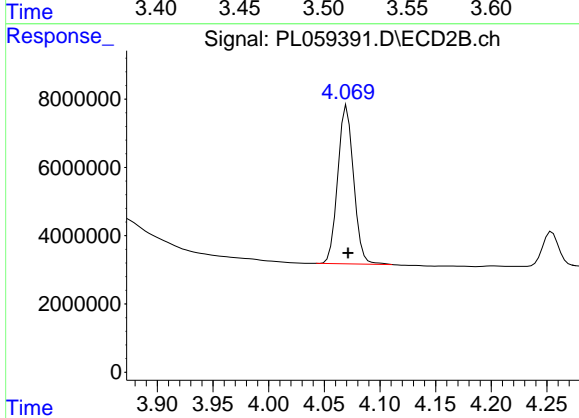




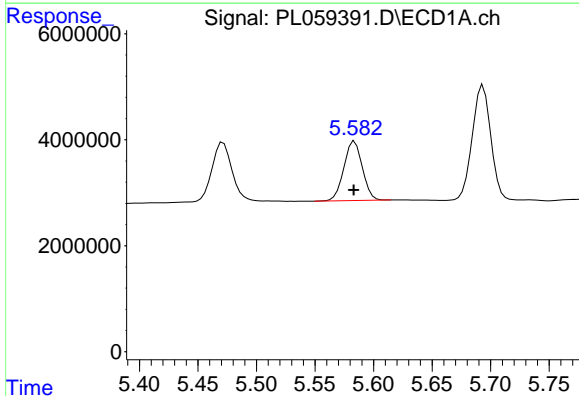
#1 Tetrachloro-m-xylene  
 R.T.: 3.517 min  
 Delta R.T.: 0.000 min  
 Response: 32392551  
 Conc: 18.02 ng/ml

Instrument :  
 ECD\_L  
 ClientSampled :  
 RESCHK

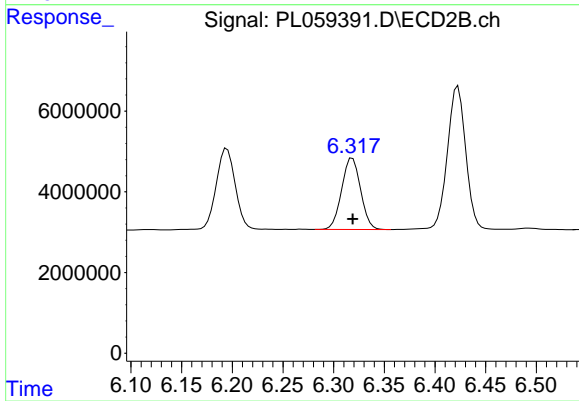
Manual Integrations  
 APPROVED  
 mohammad  
 6/24/2020 11:43:57 AM



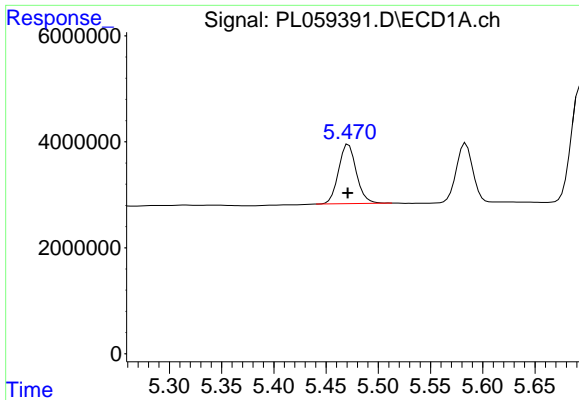
#1 Tetrachloro-m-xylene  
 R.T.: 4.070 min  
 Delta R.T.: 0.000 min  
 Response: 45963372  
 Conc: 17.81 ng/ml



#9 Endosulfan I  
 R.T.: 5.582 min  
 Delta R.T.: 0.000 min  
 Response: 12312163  
 Conc: 8.37 ng/ml m



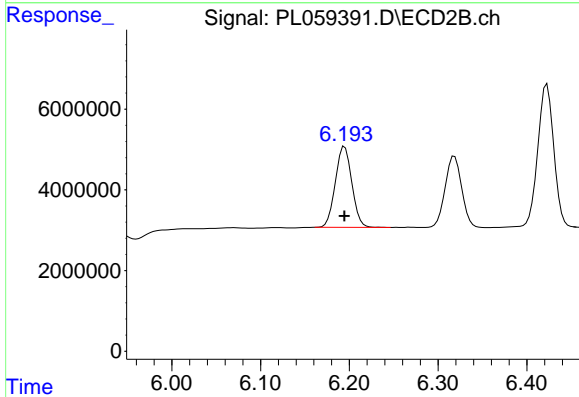
#9 Endosulfan I  
 R.T.: 6.319 min  
 Delta R.T.: 0.000 min  
 Response: 22984868  
 Conc: 8.47 ng/ml



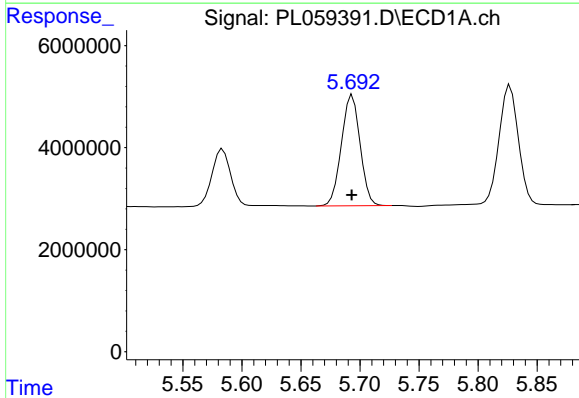
#10 gamma-Chlordane  
 R.T.: 5.470 min  
 Delta R.T.: 0.000 min  
 Response: 13267546  
 Conc: 8.65 ng/ml m

**Instrument :**  
 ECD\_L  
**ClientSampled :**  
 RESCHK

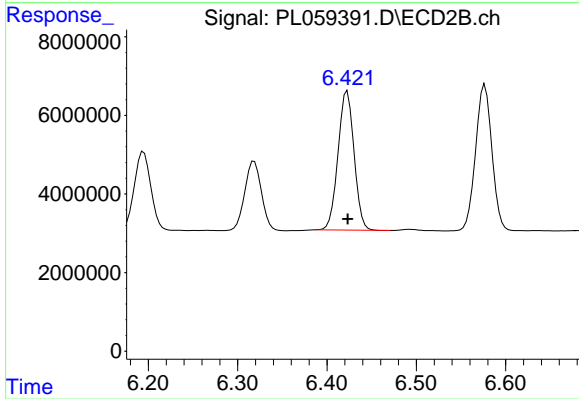
**Manual Integrations**  
**APPROVED**  
 mohammad  
 6/24/2020 11:43:57 AM



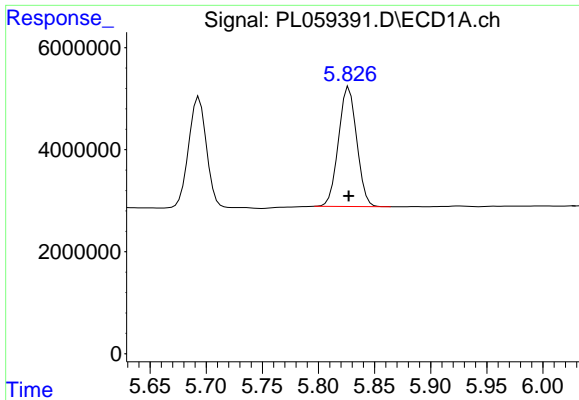
#10 gamma-Chlordane  
 R.T.: 6.195 min  
 Delta R.T.: 0.000 min  
 Response: 25972097  
 Conc: 8.87 ng/ml



#12 4,4'-DDE  
 R.T.: 5.694 min  
 Delta R.T.: 0.000 min  
 Response: 23942668  
 Conc: 16.48 ng/ml



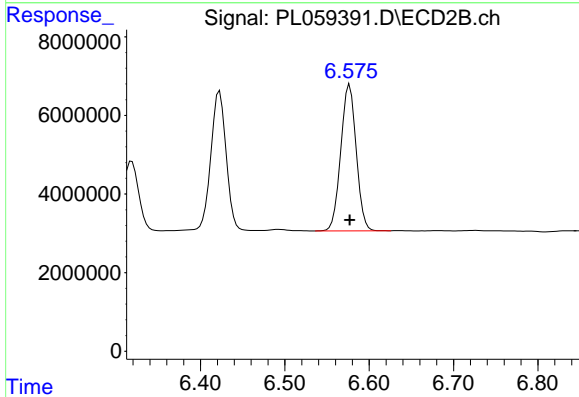
#12 4,4'-DDE  
 R.T.: 6.423 min  
 Delta R.T.: 0.000 min  
 Response: 44081414  
 Conc: 16.32 ng/ml



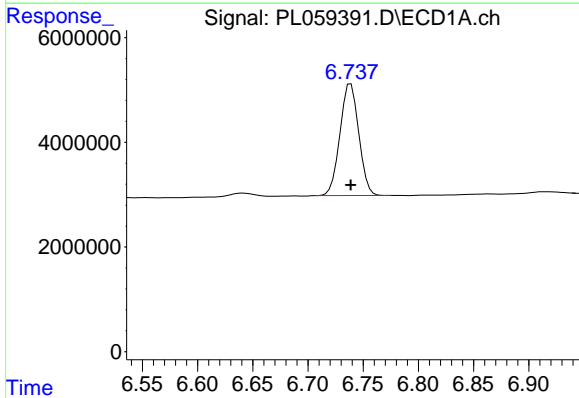
#13 Dieldrin  
 R.T.: 5.827 min  
 Delta R.T.: 0.000 min  
 Response: 26492786  
 Conc: 16.79 ng/ml

**Instrument :**  
 ECD\_L  
**ClientSampled :**  
 RESCHK

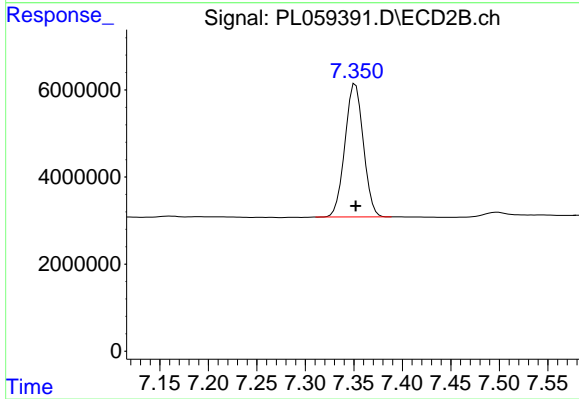
**Manual Integrations**  
**APPROVED**  
 mohammad  
 6/24/2020 11:43:57 AM



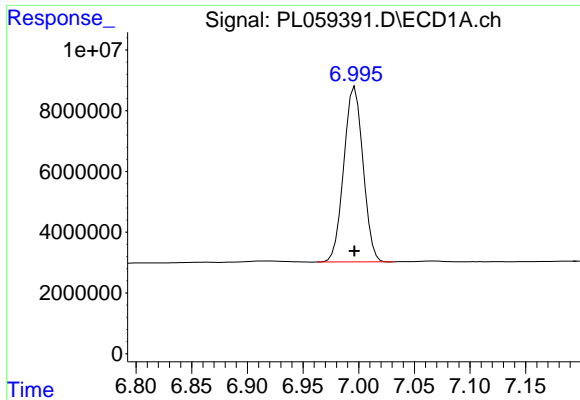
#13 Dieldrin  
 R.T.: 6.577 min  
 Delta R.T.: 0.000 min  
 Response: 47326942  
 Conc: 16.81 ng/ml



#19 Endosulfan Sulfate  
 R.T.: 6.739 min  
 Delta R.T.: 0.000 min  
 Response: 25300607  
 Conc: 16.66 ng/ml



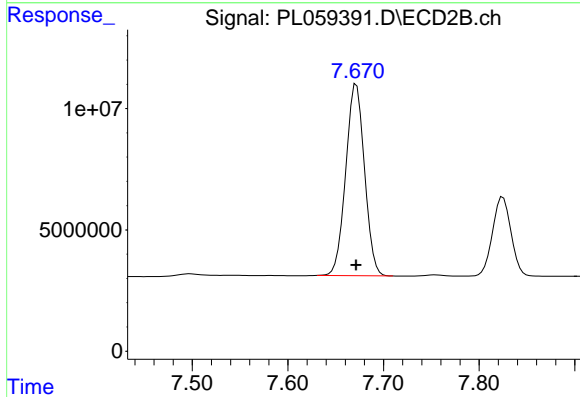
#19 Endosulfan Sulfate  
 R.T.: 7.352 min  
 Delta R.T.: 0.000 min  
 Response: 40389105  
 Conc: 16.69 ng/ml



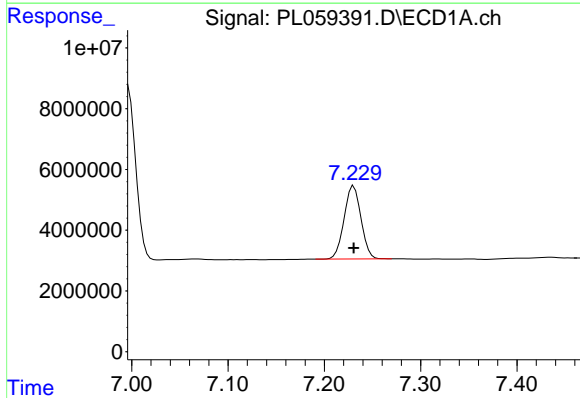
#20 Methoxychlor  
 R.T.: 6.997 min  
 Delta R.T.: 0.000 min  
 Response: 69362278  
 Conc: 85.59 ng/ml

Instrument :  
 ECD\_L  
 ClientSampled :  
 RESCHK

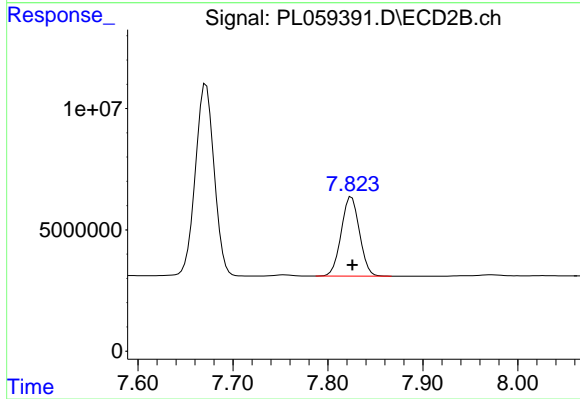
Manual Integrations  
 APPROVED  
 mohammad  
 6/24/2020 11:43:57 AM



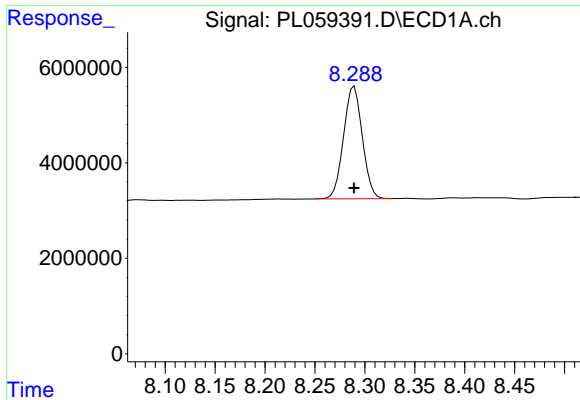
#20 Methoxychlor  
 R.T.: 7.672 min  
 Delta R.T.: 0.000 min  
 Response: 108085263  
 Conc: 81.42 ng/ml



#21 Endrin ketone  
 R.T.: 7.230 min  
 Delta R.T.: 0.000 min  
 Response: 29163330  
 Conc: 16.73 ng/ml



#21 Endrin ketone  
 R.T.: 7.825 min  
 Delta R.T.: 0.000 min  
 Response: 43771694  
 Conc: 16.95 ng/ml



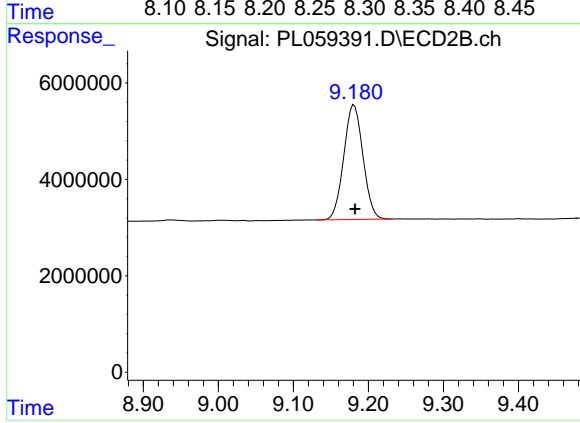
#28 Decachlorobiphenyl

R.T.: 8.289 min  
Delta R.T.: 0.000 min  
Response: 30788529  
Conc: 18.08 ng/ml

Instrument :  
ECD\_L  
ClientSampled :  
RESCHK

Manual Integrations  
APPROVED

mohammad  
6/24/2020 11:43:57 AM



#28 Decachlorobiphenyl

R.T.: 9.181 min  
Delta R.T.: 0.000 min  
Response: 42369732  
Conc: 18.51 ng/ml