

Data Path : Z:\pestpcbsrv\HPCHEM1\ECD\_L\Data\PL062220\  
 Data File : PL059392.D  
 Signal(s) : Signal #1: ECD1A.ch Signal #2: ECD2B.ch  
 Acq On : 22 Jun 2020 11:54  
 Operator : AJ\MA  
 Sample : PSTDICC100  
 Misc :  
 ALS Vial : 5 Sample Multiplier: 1

Instrument :  
 ECD\_L  
 ClientSampleId :  
 PSTDICC100

Integration File signal 1: autoint1.e  
 Integration File signal 2: autoint2.e  
 Quant Time: Jun 22 13:28:06 2020  
 Quant Method : Z:\pestpcbsrv\HPCHEM1\ECD\_L\methods\PL062220.M  
 Quant Title : GC Extractables  
 QLast Update : Mon Jun 22 13:27:43 2020  
 Response via : Initial Calibration  
 Integrator: ChemStation

Volume Inj. : 1 µl  
 Signal #1 Phase : ZB-MR2 Signal #2 Phase: ZB-MR1  
 Signal #1 Info : 30M x 0.32mm x0.2 Signal #2 Info : 30M x 0.32mm x0.5µm

	Compound	RT#1	RT#2	Resp#1	Resp#2	ng/ml	ng/ml
-----							
System Monitoring Compounds							
1)	SA Tetrachlo...	3.517	4.071	181.4E6	260.7E6	102.269	101.960
28)	SA Decachlor...	8.289	9.181	162.6E6	214.9E6	98.072	96.719
Target Compounds							
2)	A alpha-BHC	3.958	4.463	275.3E6	364.8E6	107.298	105.730
3)	MA gamma-BHC...	4.243	4.750	241.5E6	331.8E6	106.708	105.582
4)	MA Heptachlor	4.549	5.264	218.5E6	326.9E6	104.031	102.963
5)	MB Aldrin	4.799	5.572	184.0E6	316.7E6	103.368	104.858
6)	B beta-BHC	4.493	4.919	93148111	138.2E6	100.695	101.808
7)	B delta-BHC	4.700	5.138	219.1E6	302.8E6	106.557	106.941
8)	B Heptachlo...	5.243	5.960	151.6E6	266.6E6	101.820	103.474
9)	A Endosulfan I	5.583	6.319	148.8E6	272.1E6	102.200	102.606
10)	B gamma-Chl...	5.471	6.194	156.0E6	296.6E6	102.884	103.060
11)	B alpha-Chl...	5.530	6.268	156.9E6	296.1E6	102.320	102.311
12)	B 4,4'-DDE	5.693	6.423	153.9E6	283.4E6	105.848	105.893
13)	MA Dieldrin	5.827	6.577	164.8E6	290.3E6	104.673	104.612
14)	MA Endrin	6.085	6.796	157.2E6	252.5E6	103.857	104.130
15)	B Endosulfa...	6.357	7.005	155.2E6	249.8E6	101.866	101.645
16)	A 4,4'-DDD	6.209	6.914	137.2E6	230.6E6	105.207	104.534
17)	MA 4,4'-DDT	6.451	7.214	144.2E6	234.9E6	106.741	104.357
18)	B Endrin al...	6.525	7.129	130.9E6	214.5E6	100.926	100.444
19)	B Endosulfa...	6.739	7.352	152.8E6	238.4E6	101.507	100.812
20)	A Methoxychlor	6.996	7.671	81963266	127.0E6	99.954	98.279
21)	B Endrin ke...	7.231	7.826	177.6E6	257.4E6	102.367	101.626
22)	Mirex	7.423	8.283	135.0E6	185.3E6	98.013	96.622
-----							

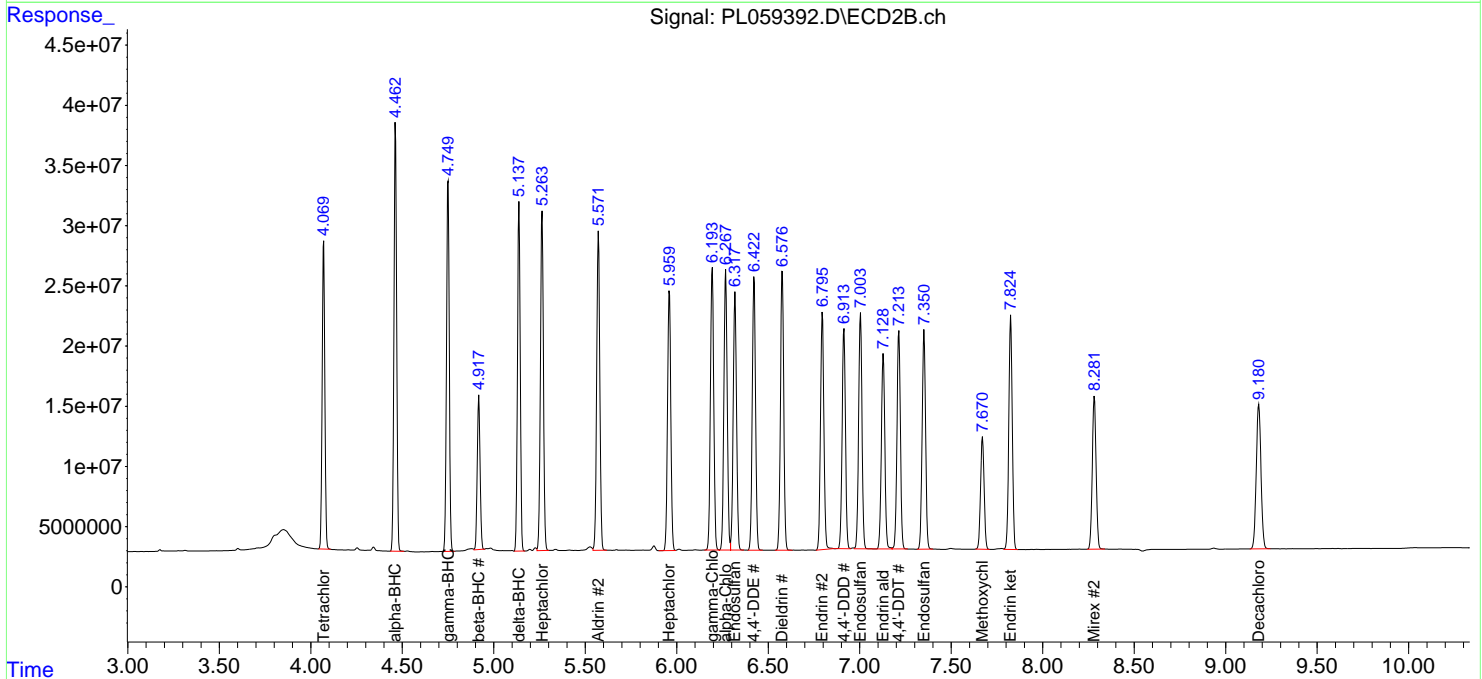
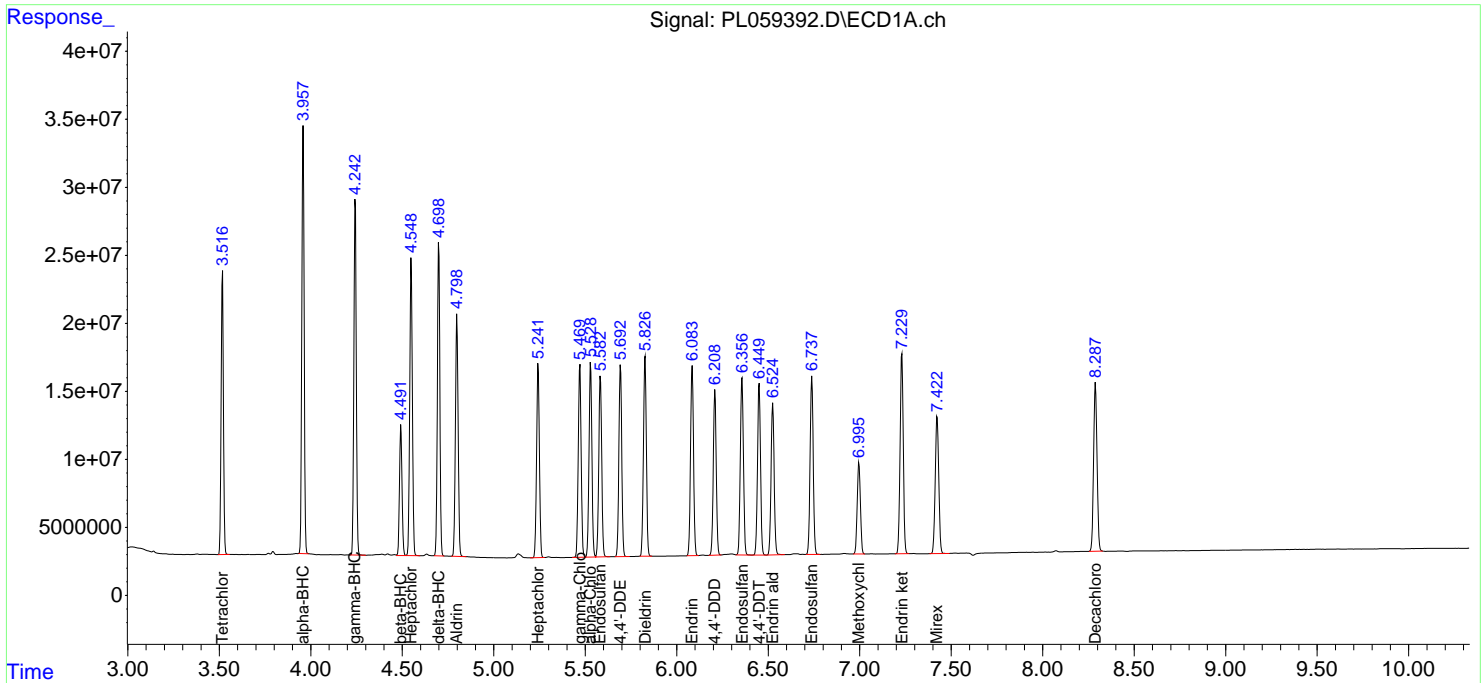
(f)=RT Delta > 1/2 Window (#)=Amounts differ by > 25% (m)=manual int.

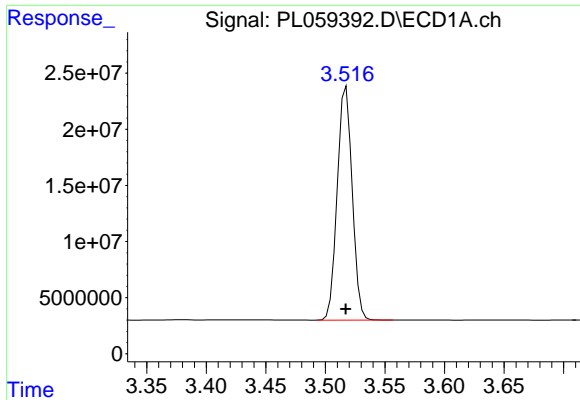
Data Path : Z:\pestpcbsrv\HPCHEM1\ECD\_L\Data\PL062220\  
 Data File : PL059392.D  
 Signal(s) : Signal #1: ECD1A.ch Signal #2: ECD2B.ch  
 Acq On : 22 Jun 2020 11:54  
 Operator : AJ\MA  
 Sample : PSTDICC100  
 Misc :  
 ALS Vial : 5 Sample Multiplier: 1

Instrument :  
 ECD\_L  
 Client Sampled :  
 PSTDICC100

Integration File signal 1: autoint1.e  
 Integration File signal 2: autoint2.e  
 Quant Time: Jun 22 13:28:06 2020  
 Quant Method : Z:\pestpcbsrv\HPCHEM1\ECD\_L\methods\PL062220.M  
 Quant Title : GC Extractables  
 QLast Update : Mon Jun 22 13:27:43 2020  
 Response via : Initial Calibration  
 Integrator: ChemStation

Volume Inj. : 1 µl  
 Signal #1 Phase : ZB-MR2 Signal #2 Phase: ZB-MR1  
 Signal #1 Info : 30M x 0.32mm x0.2 Signal #2 Info : 30M x 0.32mm x0.5µm

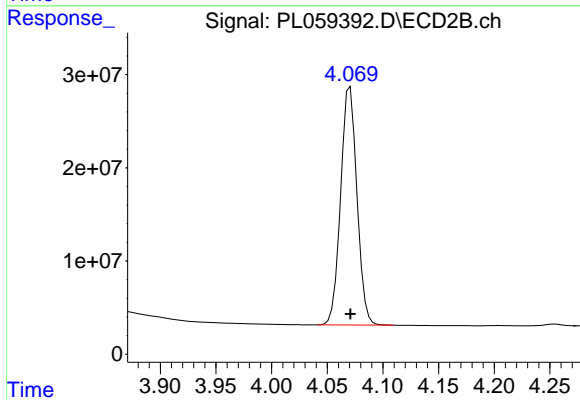




#1 Tetrachloro-m-xylene

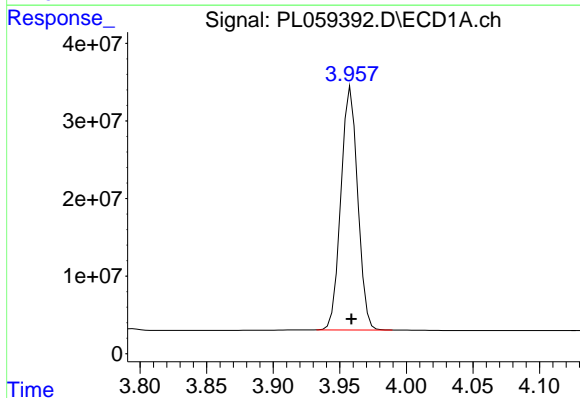
R.T.: 3.517 min  
 Delta R.T.: 0.000 min  
 Response: 181401817  
 Conc: 102.27 ng/ml

Instrument :  
 ECD\_L  
 ClientSampleId :  
 PSTDICC100



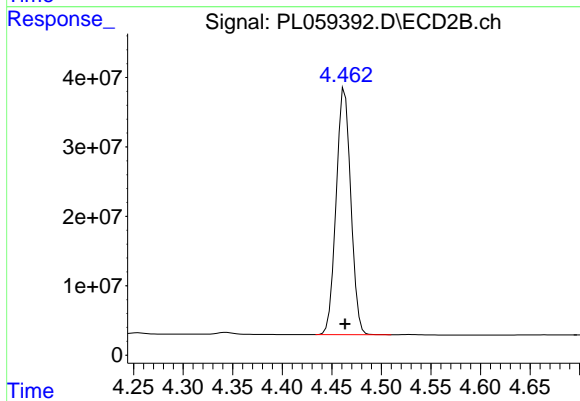
#1 Tetrachloro-m-xylene

R.T.: 4.071 min  
 Delta R.T.: 0.000 min  
 Response: 260704416  
 Conc: 101.96 ng/ml



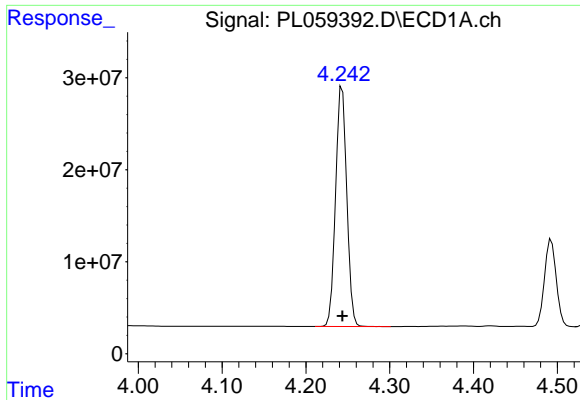
#2 alpha-BHC

R.T.: 3.958 min  
 Delta R.T.: 0.000 min  
 Response: 275344236  
 Conc: 107.30 ng/ml



#2 alpha-BHC

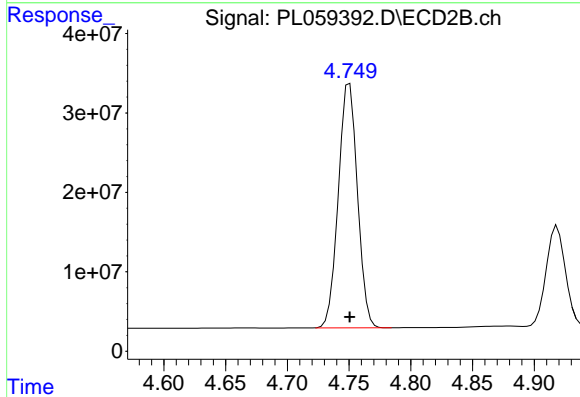
R.T.: 4.463 min  
 Delta R.T.: 0.000 min  
 Response: 364754025  
 Conc: 105.73 ng/ml



#3 gamma-BHC (Lindane)

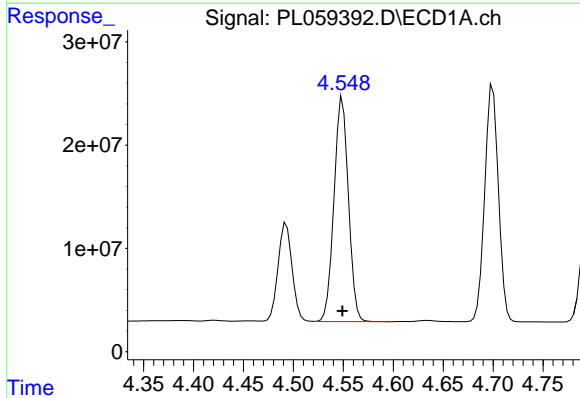
R.T.: 4.243 min  
Delta R.T.: 0.000 min  
Response: 241537455  
Conc: 106.71 ng/ml

Instrument :  
ECD\_L  
ClientSampleId :  
PSTDICC100



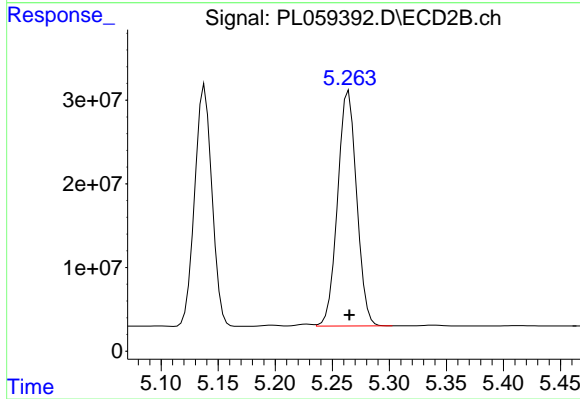
#3 gamma-BHC (Lindane)

R.T.: 4.750 min  
Delta R.T.: 0.000 min  
Response: 331830461  
Conc: 105.58 ng/ml



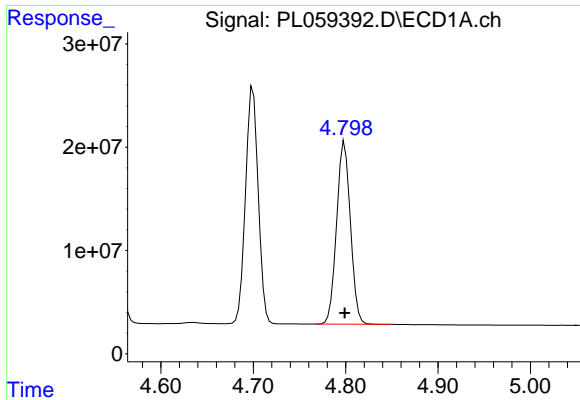
#4 Heptachlor

R.T.: 4.549 min  
Delta R.T.: 0.000 min  
Response: 218520807  
Conc: 104.03 ng/ml



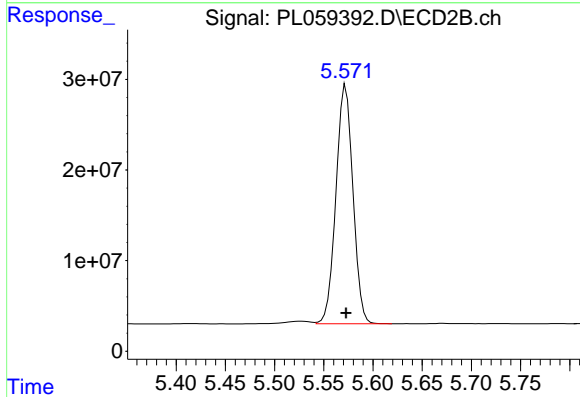
#4 Heptachlor

R.T.: 5.264 min  
Delta R.T.: 0.000 min  
Response: 326900136  
Conc: 102.96 ng/ml

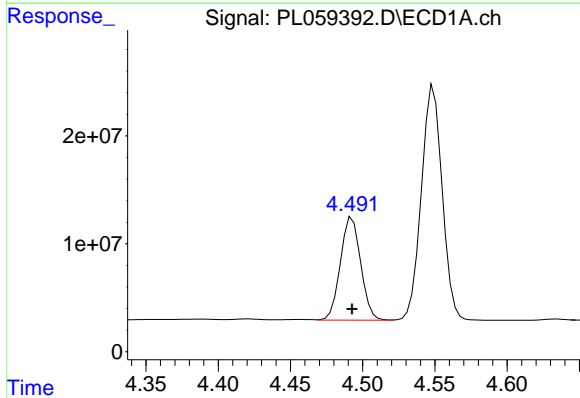


#5 Aldrin  
 R.T.: 4.799 min  
 Delta R.T.: 0.000 min  
 Response: 183983541  
 Conc: 103.37 ng/ml

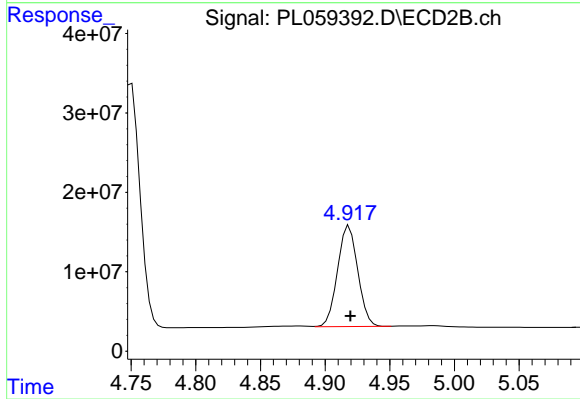
Instrument :  
 ECD\_L  
 ClientSampleId :  
 PSTDICC100



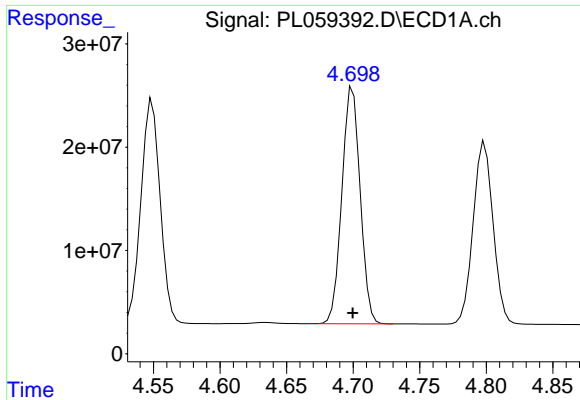
#5 Aldrin  
 R.T.: 5.572 min  
 Delta R.T.: 0.000 min  
 Response: 316707599  
 Conc: 104.86 ng/ml



#6 beta-BHC  
 R.T.: 4.493 min  
 Delta R.T.: 0.000 min  
 Response: 93148111  
 Conc: 100.69 ng/ml

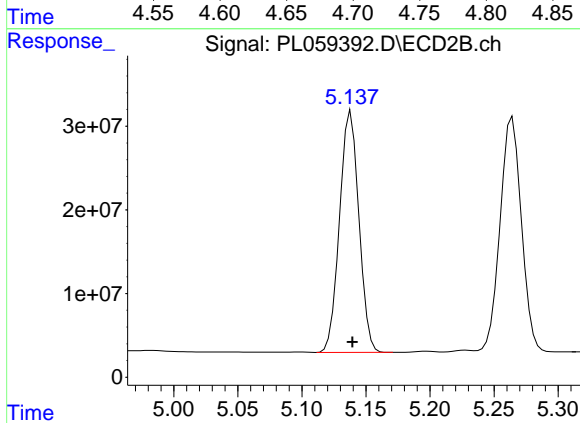


#6 beta-BHC  
 R.T.: 4.919 min  
 Delta R.T.: 0.000 min  
 Response: 138186622  
 Conc: 101.81 ng/ml

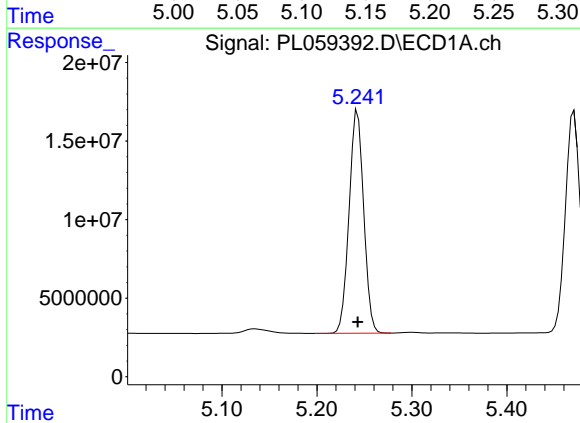


#7 delta-BHC  
 R.T.: 4.700 min  
 Delta R.T.: 0.000 min  
 Response: 219077206  
 Conc: 106.56 ng/ml

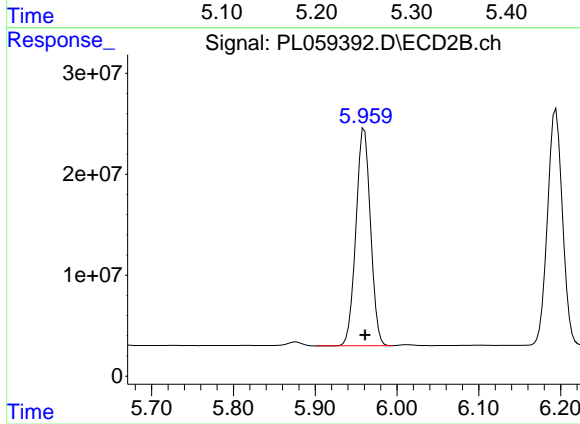
Instrument :  
 ECD\_L  
 ClientSampled :  
 PSTDICC100



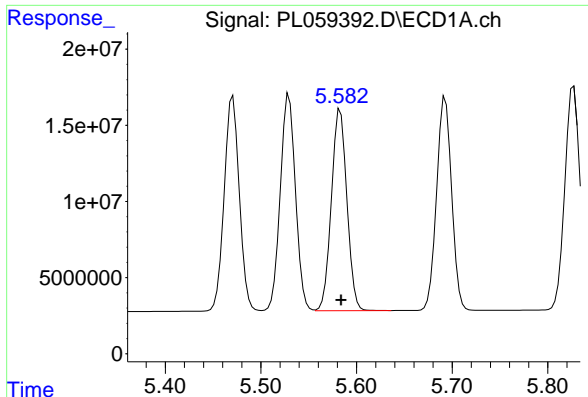
#7 delta-BHC  
 R.T.: 5.138 min  
 Delta R.T.: -0.001 min  
 Response: 302848815  
 Conc: 106.94 ng/ml



#8 Heptachlor epoxide  
 R.T.: 5.243 min  
 Delta R.T.: 0.000 min  
 Response: 151612428  
 Conc: 101.82 ng/ml



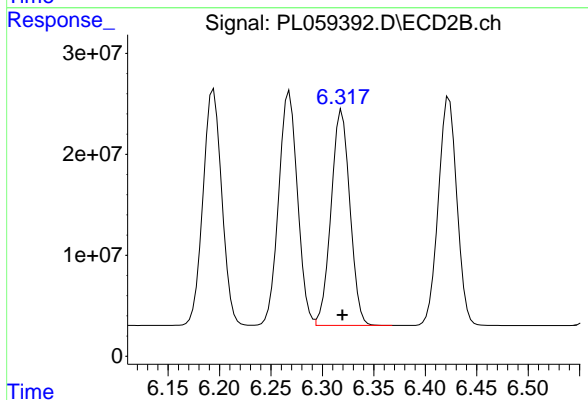
#8 Heptachlor epoxide  
 R.T.: 5.960 min  
 Delta R.T.: -0.001 min  
 Response: 266609640  
 Conc: 103.47 ng/ml



#9 Endosulfan I

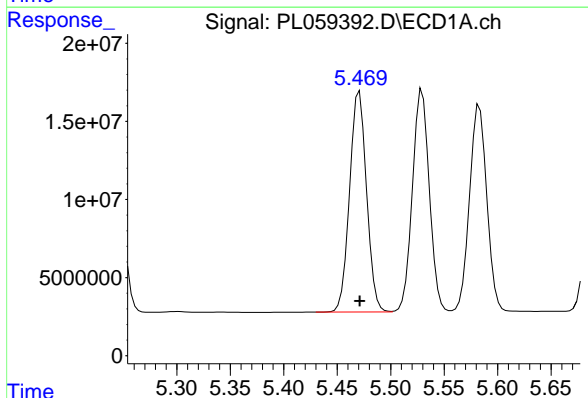
R.T.: 5.583 min  
Delta R.T.: 0.000 min  
Response: 148807187  
Conc: 102.20 ng/ml

Instrument :  
ECD\_L  
ClientSampleId :  
PSTDICC100



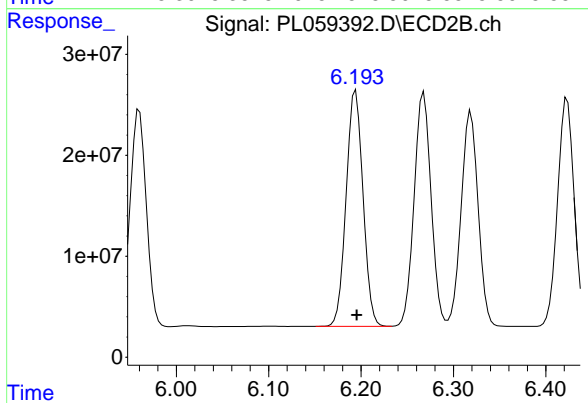
#9 Endosulfan I

R.T.: 6.319 min  
Delta R.T.: 0.000 min  
Response: 272130285  
Conc: 102.61 ng/ml



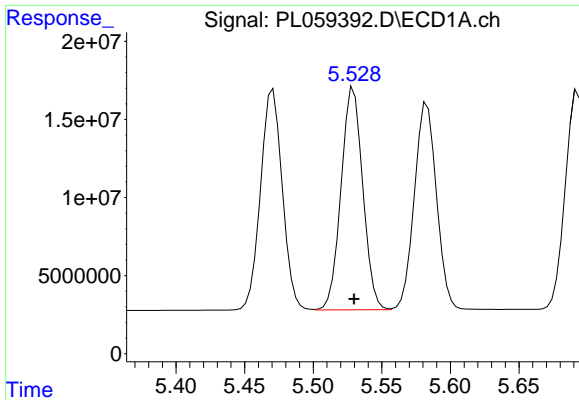
#10 gamma-Chlordane

R.T.: 5.471 min  
Delta R.T.: 0.000 min  
Response: 156014156  
Conc: 102.88 ng/ml



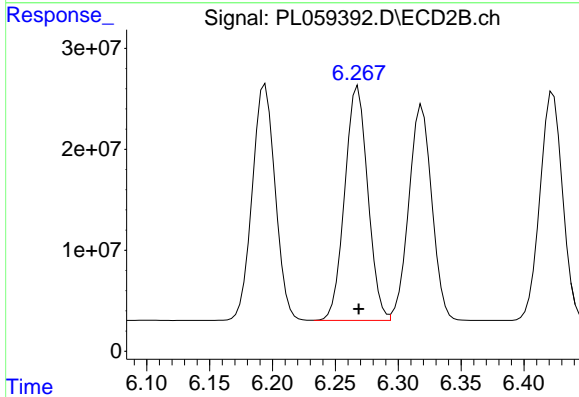
#10 gamma-Chlordane

R.T.: 6.194 min  
Delta R.T.: 0.000 min  
Response: 296649637  
Conc: 103.06 ng/ml

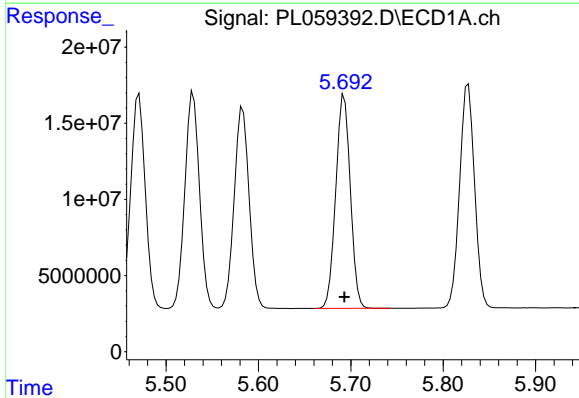


#11 alpha-Chlordane  
R.T.: 5.530 min  
Delta R.T.: 0.000 min  
Response: 156908530  
Conc: 102.32 ng/ml

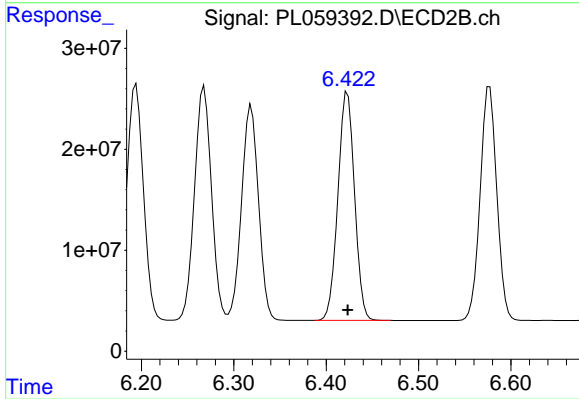
Instrument :  
ECD\_L  
ClientSampleId :  
PSTDICC100



#11 alpha-Chlordane  
R.T.: 6.268 min  
Delta R.T.: 0.000 min  
Response: 296094818  
Conc: 102.31 ng/ml

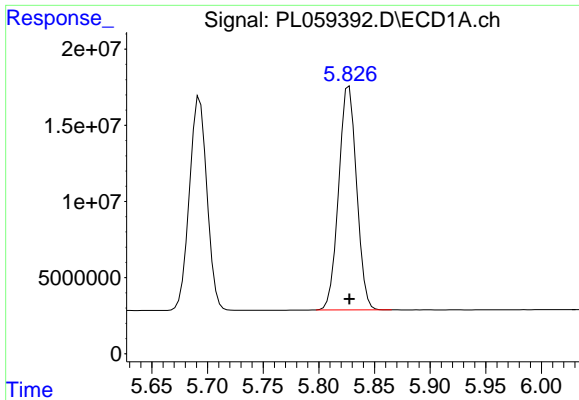


#12 4,4'-DDE  
R.T.: 5.693 min  
Delta R.T.: 0.000 min  
Response: 153900633  
Conc: 105.85 ng/ml



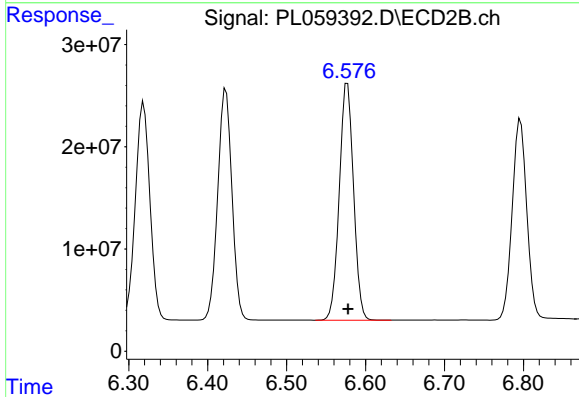
#12 4,4'-DDE  
R.T.: 6.423 min  
Delta R.T.: 0.000 min  
Response: 283394443  
Conc: 105.89 ng/ml



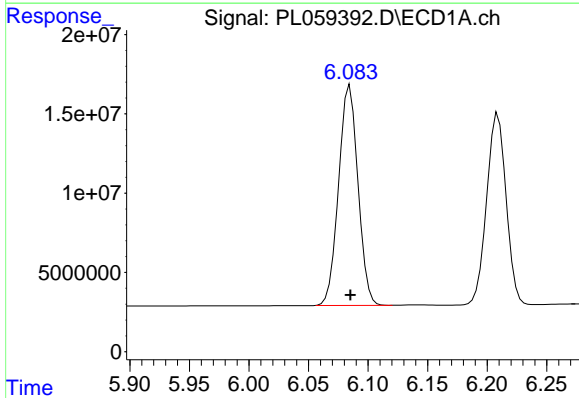


#13 Dieldrin  
R.T.: 5.827 min  
Delta R.T.: 0.000 min  
Response: 164752007  
Conc: 104.67 ng/ml

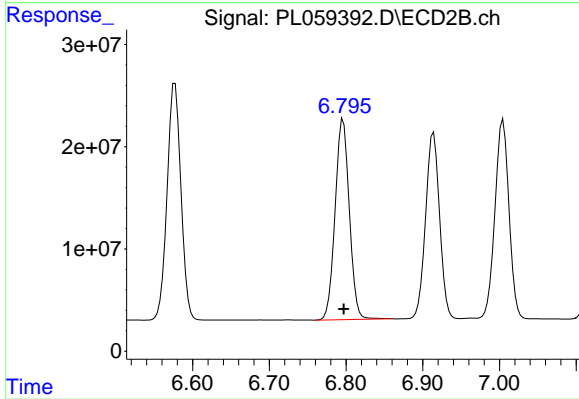
Instrument :  
ECD\_L  
ClientSampleId :  
PSTDICC100



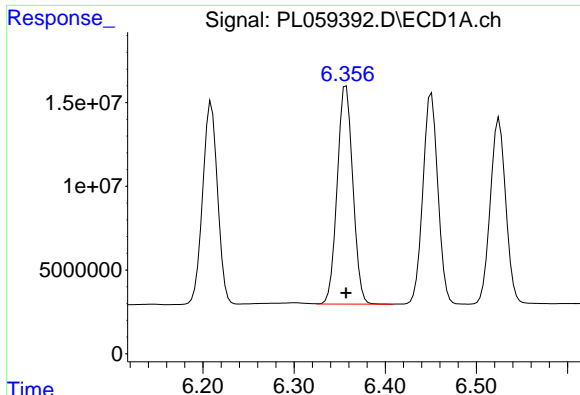
#13 Dieldrin  
R.T.: 6.577 min  
Delta R.T.: 0.000 min  
Response: 290315118  
Conc: 104.61 ng/ml



#14 Endrin  
R.T.: 6.085 min  
Delta R.T.: 0.000 min  
Response: 157191808  
Conc: 103.86 ng/ml



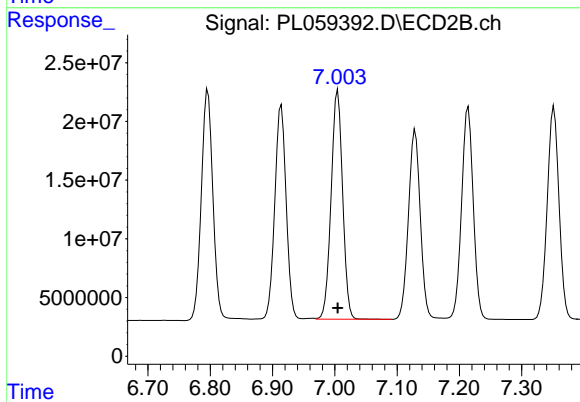
#14 Endrin  
R.T.: 6.796 min  
Delta R.T.: 0.000 min  
Response: 252517423  
Conc: 104.13 ng/ml



#15 Endosulfan II

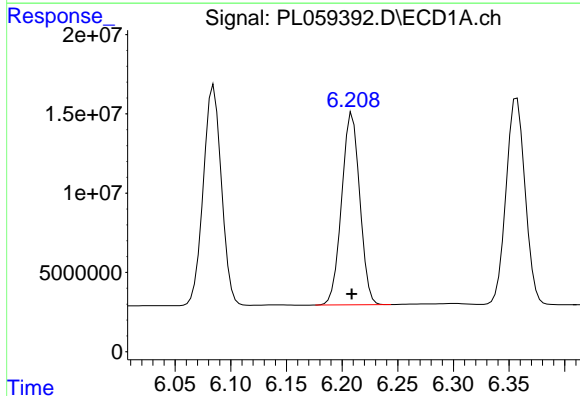
R.T.: 6.357 min  
 Delta R.T.: 0.000 min  
 Response: 155197625  
 Conc: 101.87 ng/ml

Instrument :  
 ECD\_L  
 ClientSampleId :  
 PSTDICC100



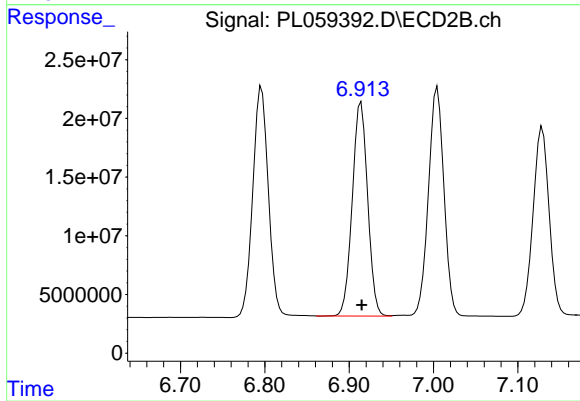
#15 Endosulfan II

R.T.: 7.005 min  
 Delta R.T.: 0.000 min  
 Response: 249759910  
 Conc: 101.64 ng/ml



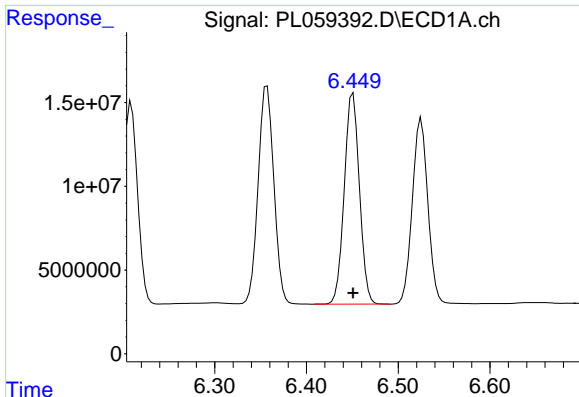
#16 4,4'-DDD

R.T.: 6.209 min  
 Delta R.T.: 0.000 min  
 Response: 137158973  
 Conc: 105.21 ng/ml



#16 4,4'-DDD

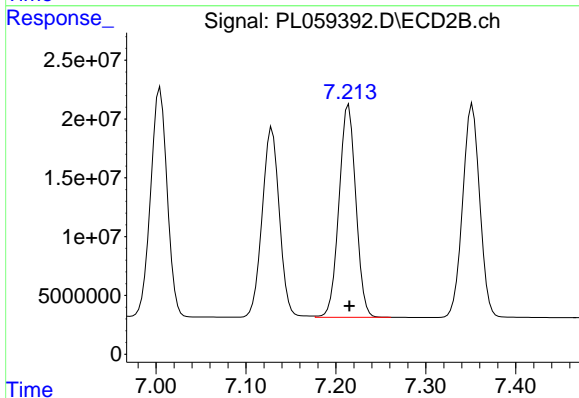
R.T.: 6.914 min  
 Delta R.T.: 0.000 min  
 Response: 230635034  
 Conc: 104.53 ng/ml



#17 4,4'-DDT

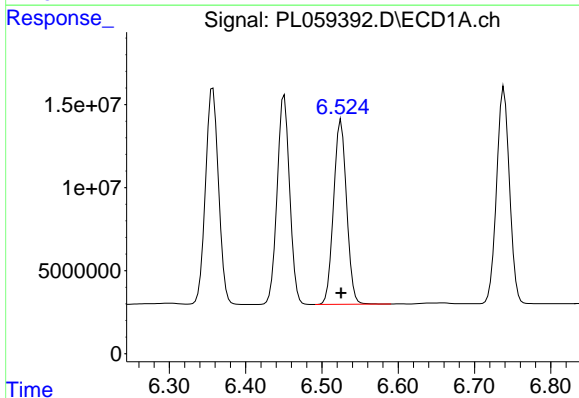
R.T.: 6.451 min  
 Delta R.T.: 0.000 min  
 Response: 144172630  
 Conc: 106.74 ng/ml

Instrument :  
 ECD\_L  
 ClientSampleId :  
 PSTDICC100



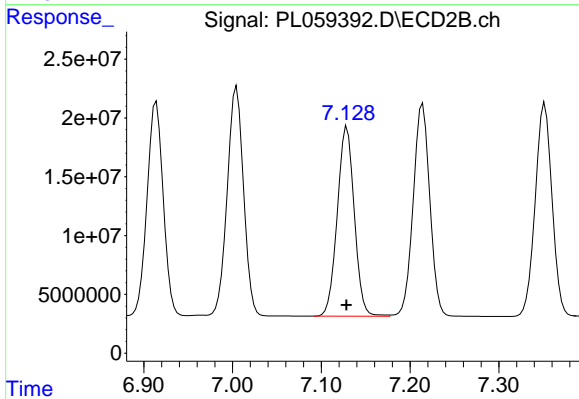
#17 4,4'-DDT

R.T.: 7.214 min  
 Delta R.T.: 0.000 min  
 Response: 234927633  
 Conc: 104.36 ng/ml



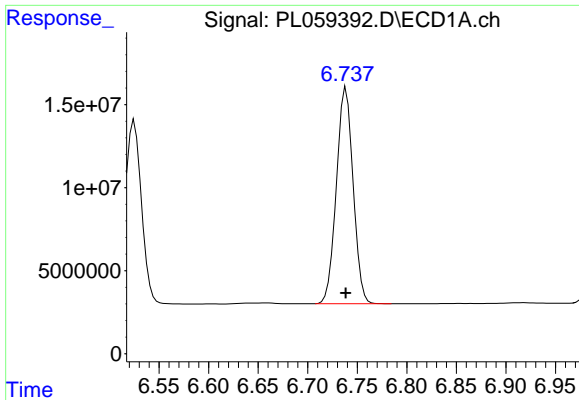
#18 Endrin aldehyde

R.T.: 6.525 min  
 Delta R.T.: 0.000 min  
 Response: 130936856  
 Conc: 100.93 ng/ml



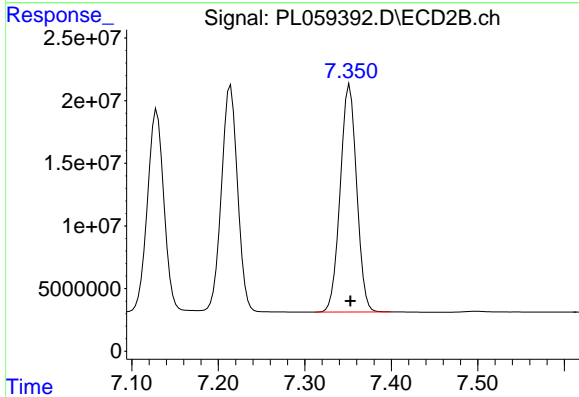
#18 Endrin aldehyde

R.T.: 7.129 min  
 Delta R.T.: 0.000 min  
 Response: 214528817  
 Conc: 100.44 ng/ml

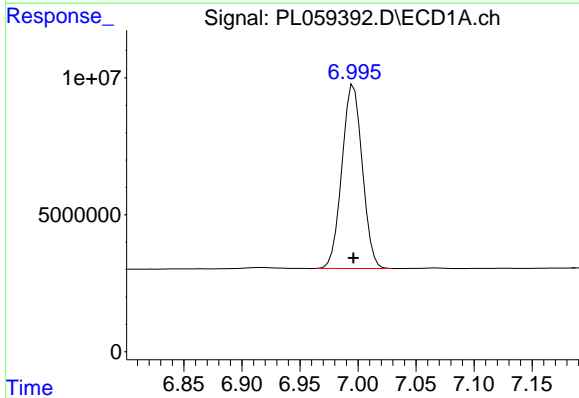


#19 Endosulfan Sulfate  
 R.T.: 6.739 min  
 Delta R.T.: 0.000 min  
 Response: 152840455  
 Conc: 101.51 ng/ml

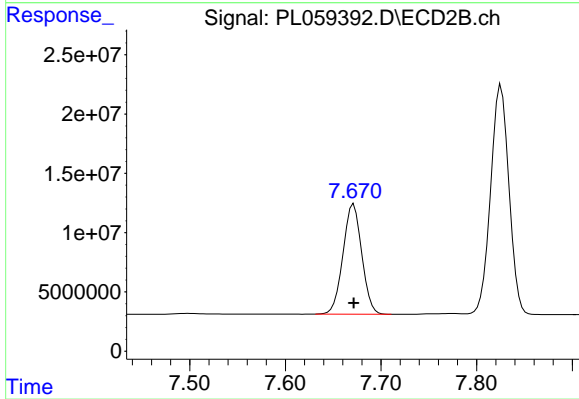
Instrument :  
 ECD\_L  
 ClientSampled :  
 PSTDICC100



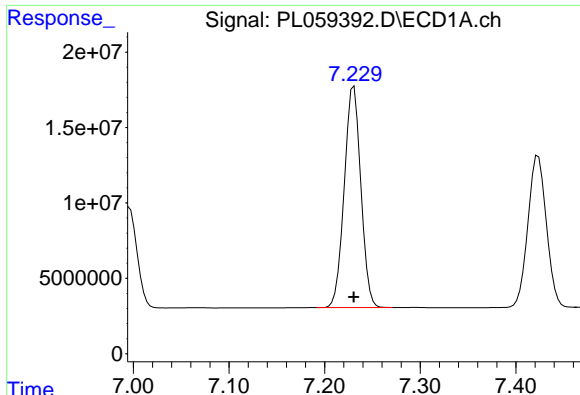
#19 Endosulfan Sulfate  
 R.T.: 7.352 min  
 Delta R.T.: 0.000 min  
 Response: 238438468  
 Conc: 100.81 ng/ml



#20 Methoxychlor  
 R.T.: 6.996 min  
 Delta R.T.: 0.000 min  
 Response: 81963266  
 Conc: 99.95 ng/ml



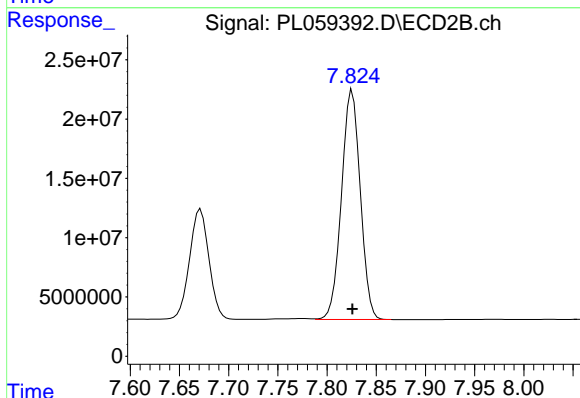
#20 Methoxychlor  
 R.T.: 7.671 min  
 Delta R.T.: 0.000 min  
 Response: 127048814  
 Conc: 98.28 ng/ml



#21 Endrin ketone

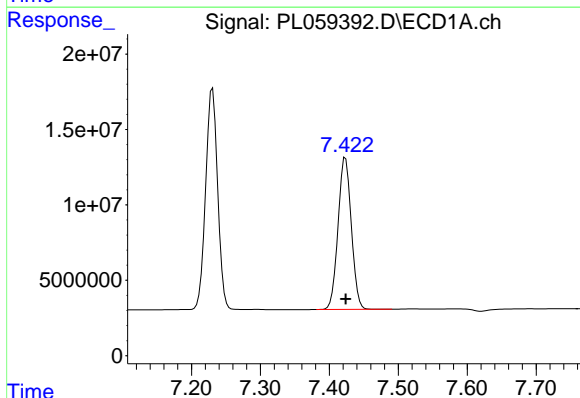
R.T.: 7.231 min  
 Delta R.T.: 0.000 min  
 Response: 177599760  
 Conc: 102.37 ng/ml

Instrument :  
 ECD\_L  
 ClientSampleId :  
 PSTDICC100



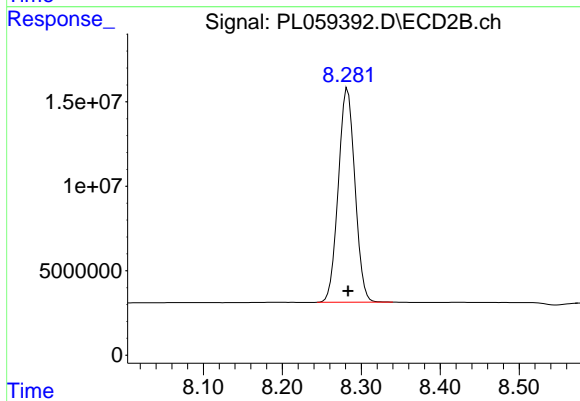
#21 Endrin ketone

R.T.: 7.826 min  
 Delta R.T.: 0.000 min  
 Response: 257370468  
 Conc: 101.63 ng/ml



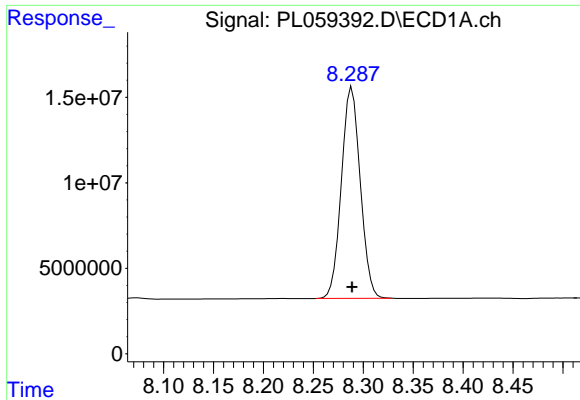
#22 Mirex

R.T.: 7.423 min  
 Delta R.T.: 0.000 min  
 Response: 134952357  
 Conc: 98.01 ng/ml



#22 Mirex

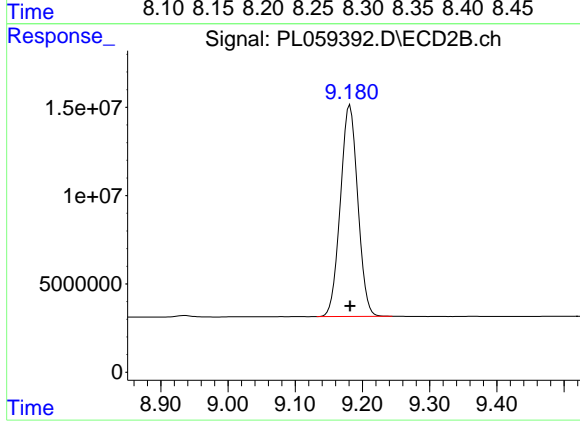
R.T.: 8.283 min  
 Delta R.T.: 0.000 min  
 Response: 185295081  
 Conc: 96.62 ng/ml



#28 Decachlorobiphenyl

R.T.: 8.289 min  
Delta R.T.: 0.000 min  
Response: 162614422  
Conc: 98.07 ng/ml

Instrument :  
ECD\_L  
ClientSampleId :  
PSTDICC100



#28 Decachlorobiphenyl

R.T.: 9.181 min  
Delta R.T.: 0.000 min  
Response: 214921546  
Conc: 96.72 ng/ml