

Data Path : Z:\pestpcbsrv\HPCHEM1\ECD\_L\Data\PL062220\  
 Data File : PL059393.D  
 Signal(s) : Signal #1: ECD1A.ch Signal #2: ECD2B.ch  
 Acq On : 22 Jun 2020 12:08  
 Operator : AJ\MA  
 Sample : PSTDICC075  
 Misc :  
 ALS Vial : 6 Sample Multiplier: 1

Instrument :  
 ECD\_L  
 ClientSampleId :  
 PSTDICC075

Integration File signal 1: autoint1.e  
 Integration File signal 2: autoint2.e  
 Quant Time: Jun 22 13:28:18 2020  
 Quant Method : Z:\pestpcbsrv\HPCHEM1\ECD\_L\methods\PL062220.M  
 Quant Title : GC Extractables  
 QLast Update : Mon Jun 22 13:27:43 2020  
 Response via : Initial Calibration  
 Integrator: ChemStation

Volume Inj. : 1 µl  
 Signal #1 Phase : ZB-MR2 Signal #2 Phase: ZB-MR1  
 Signal #1 Info : 30M x 0.32mm x0.2 Signal #2 Info : 30M x 0.32mm x0.5µm

	Compound	RT#1	RT#2	Resp#1	Resp#2	ng/ml	ng/ml
-----							
System Monitoring Compounds							
1)	SA Tetrachlo...	3.517	4.070	136.5E6	197.4E6	76.963	77.195
28)	SA Decachlor...	8.290	9.181	124.8E6	166.0E6	75.247	74.709
Target Compounds							
2)	A alpha-BHC	3.959	4.463	204.1E6	272.4E6	79.549	78.971
3)	MA gamma-BHC...	4.243	4.750	179.8E6	247.2E6	79.416	78.655
4)	MA Heptachlor	4.549	5.265	163.7E6	246.3E6	77.947	77.567
5)	MB Aldrin	4.799	5.572	139.1E6	237.1E6	78.127	78.510
6)	B beta-BHC	4.493	4.919	70844893	104.1E6	76.585	76.719
7)	B delta-BHC	4.699	5.139	163.0E6	225.4E6	79.294	79.582
8)	B Heptachlo...	5.243	5.960	115.1E6	200.6E6	77.279	77.871
9)	A Endosulfan I	5.583	6.319	112.8E6	205.0E6	77.483	77.291
10)	B gamma-Chl...	5.471	6.195	117.9E6	223.1E6	77.733	77.498
11)	B alpha-Chl...	5.529	6.268	118.7E6	223.5E6	77.401	77.213
12)	B 4,4'-DDE	5.693	6.423	115.2E6	211.2E6	79.203	78.914
13)	MA Dieldrin	5.827	6.578	123.8E6	216.9E6	78.634	78.161
14)	MA Endrin	6.085	6.796	118.4E6	188.4E6	78.199	77.689
15)	B Endosulfa...	6.357	7.004	117.6E6	188.5E6	77.211	76.698
16)	A 4,4'-DDD	6.209	6.914	103.0E6	172.6E6	79.006	78.215
17)	MA 4,4'-DDT	6.451	7.214	107.5E6	175.1E6	79.623	77.787
18)	B Endrin al...	6.525	7.128	99613178	162.7E6	76.782	76.164
19)	B Endosulfa...	6.739	7.352	116.0E6	180.6E6	77.008	76.347
20)	A Methoxychlor	6.996	7.672	62375781	97047891	76.067	75.071
21)	B Endrin ke...	7.230	7.825	134.0E6	193.7E6	77.237	76.478
22)	Mirex	7.424	8.283	103.6E6	142.2E6	75.265	74.150

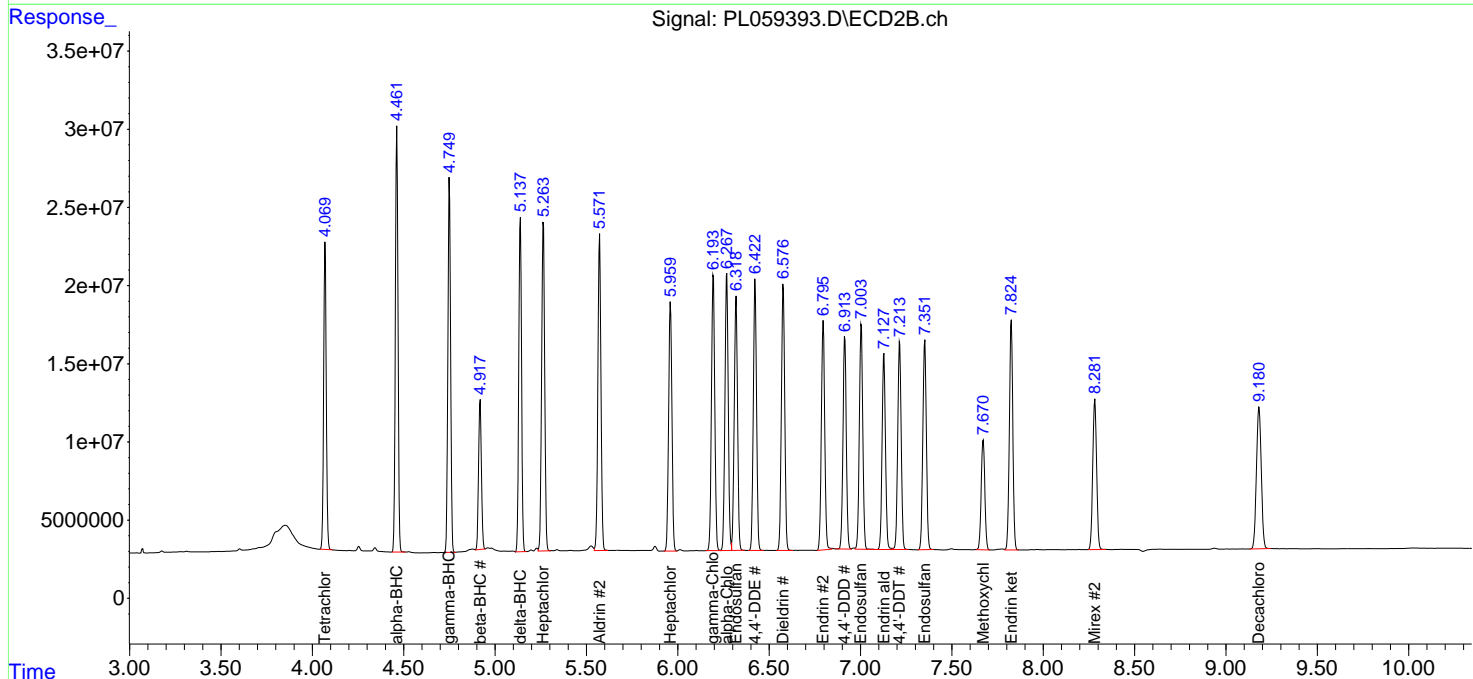
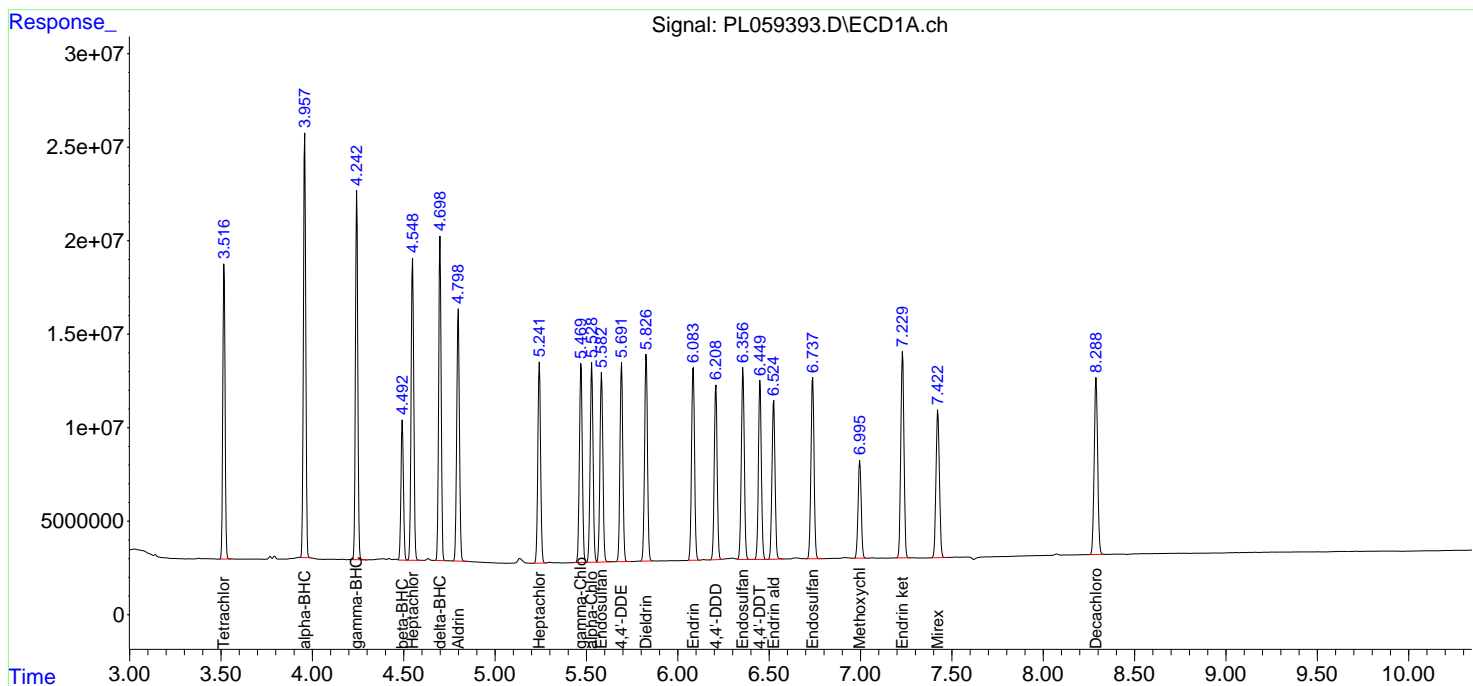
(f)=RT Delta > 1/2 Window (#)=Amounts differ by > 25% (m)=manual int.

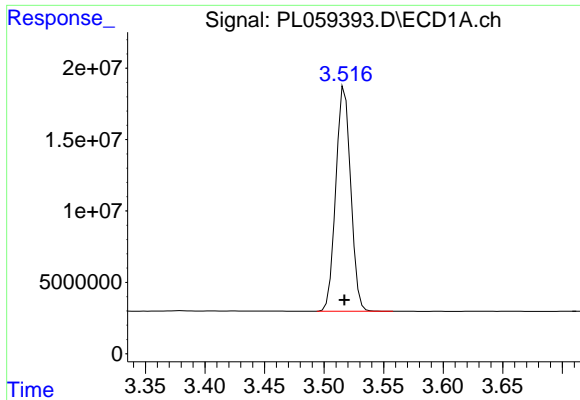
Data Path : Z:\pestpcbsrv\HPCHEM1\ECD\_L\Data\PL062220\  
 Data File : PL059393.D  
 Signal(s) : Signal #1: ECD1A.ch Signal #2: ECD2B.ch  
 Acq On : 22 Jun 2020 12:08  
 Operator : AJ\MA  
 Sample : PSTDICC075  
 Misc :  
 ALS Vial : 6 Sample Multiplier: 1

Instrument :  
 ECD\_L  
 Client Sampled :  
 PSTDICC075

Integration File signal 1: autoint1.e  
 Integration File signal 2: autoint2.e  
 Quant Time: Jun 22 13:28:18 2020  
 Quant Method : Z:\pestpcbsrv\HPCHEM1\ECD\_L\methods\PL062220.M  
 Quant Title : GC Extractables  
 QLast Update : Mon Jun 22 13:27:43 2020  
 Response via : Initial Calibration  
 Integrator: ChemStation

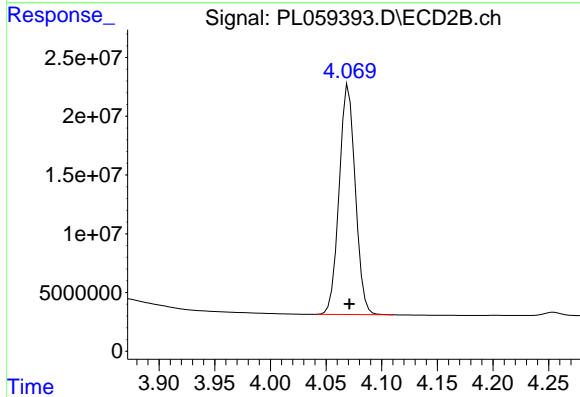
Volume Inj. : 1 µl  
 Signal #1 Phase : ZB-MR2 Signal #2 Phase: ZB-MR1  
 Signal #1 Info : 30M x 0.32mm x0.2 Signal #2 Info : 30M x 0.32mm x0.5µm



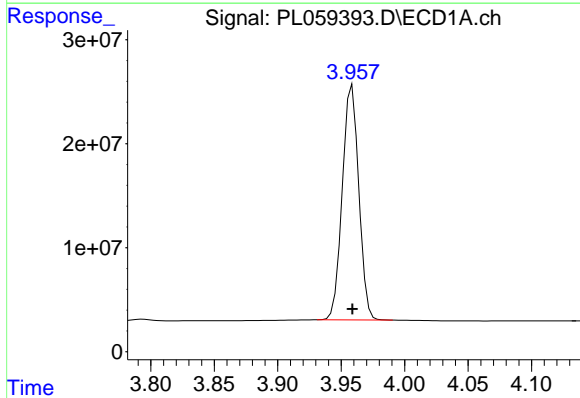


#1 Tetrachloro-m-xylene  
 R.T.: 3.517 min  
 Delta R.T.: 0.000 min  
 Response: 136515187  
 Conc: 76.96 ng/ml

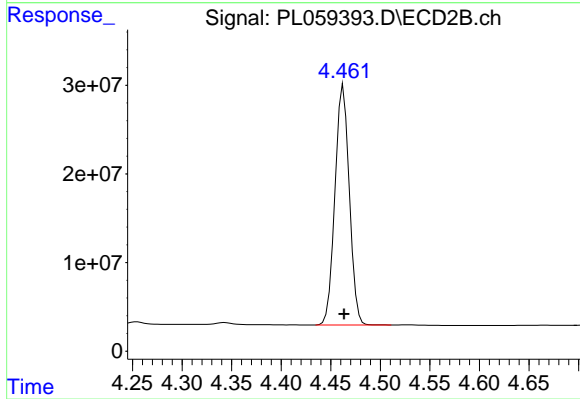
Instrument :  
 ECD\_L  
 ClientSampleId :  
 PSTDICC075



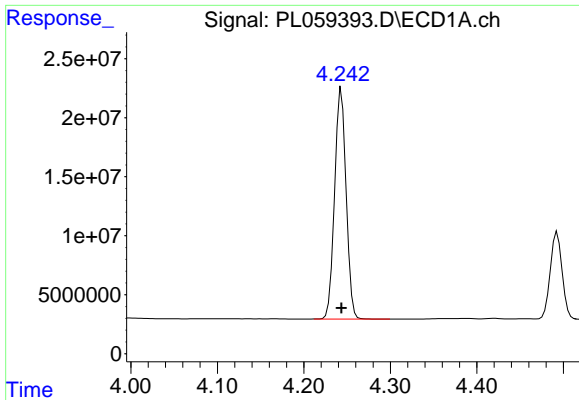
#1 Tetrachloro-m-xylene  
 R.T.: 4.070 min  
 Delta R.T.: 0.000 min  
 Response: 197382810  
 Conc: 77.20 ng/ml



#2 alpha-BHC  
 R.T.: 3.959 min  
 Delta R.T.: 0.000 min  
 Response: 204137334  
 Conc: 79.55 ng/ml

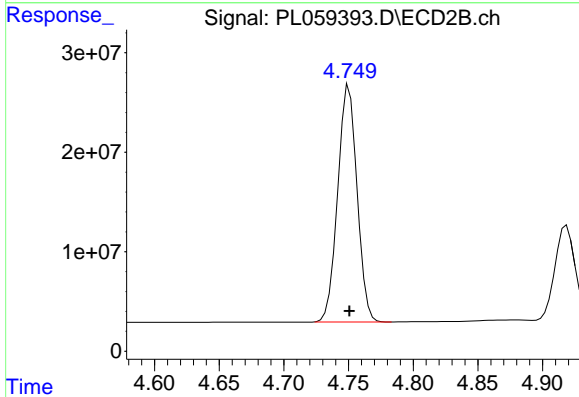


#2 alpha-BHC  
 R.T.: 4.463 min  
 Delta R.T.: 0.000 min  
 Response: 272437910  
 Conc: 78.97 ng/ml

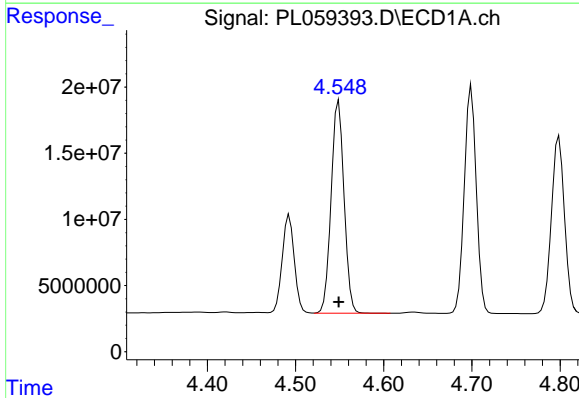


#3 gamma-BHC (Lindane)  
R.T.: 4.243 min  
Delta R.T.: 0.000 min  
Response: 179762501  
Conc: 79.42 ng/ml

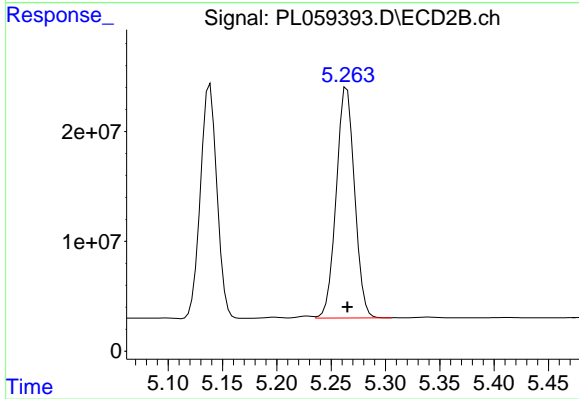
Instrument :  
ECD\_L  
ClientSampled :  
PSTDICC075



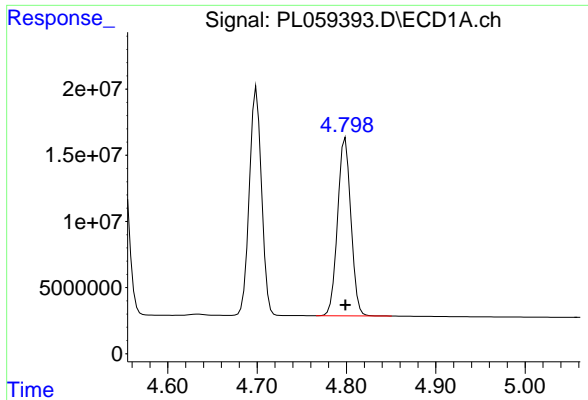
#3 gamma-BHC (Lindane)  
R.T.: 4.750 min  
Delta R.T.: 0.000 min  
Response: 247203839  
Conc: 78.66 ng/ml



#4 Heptachlor  
R.T.: 4.549 min  
Delta R.T.: 0.000 min  
Response: 163730290  
Conc: 77.95 ng/ml

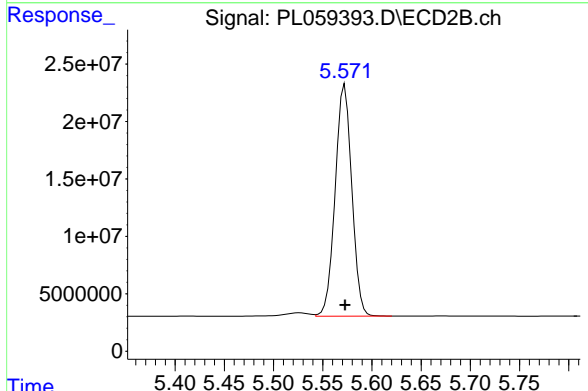


#4 Heptachlor  
R.T.: 5.265 min  
Delta R.T.: 0.000 min  
Response: 246271531  
Conc: 77.57 ng/ml

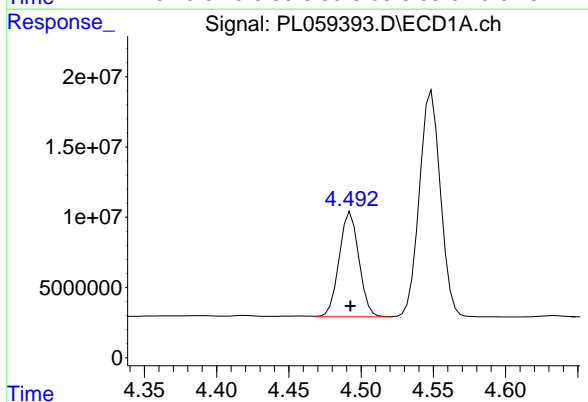


#5 Aldrin  
 R.T.: 4.799 min  
 Delta R.T.: 0.000 min  
 Response: 139057637  
 Conc: 78.13 ng/ml

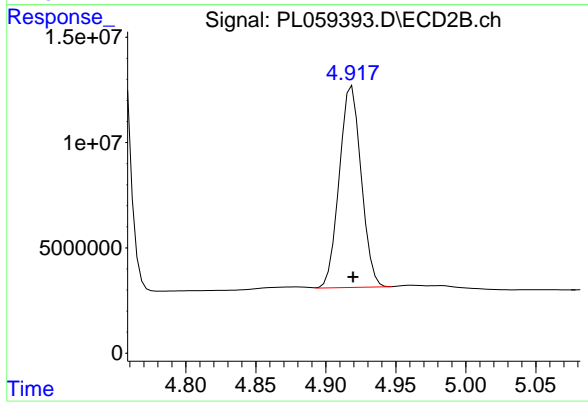
Instrument :  
 ECD\_L  
 ClientSampleId :  
 PSTDICC075



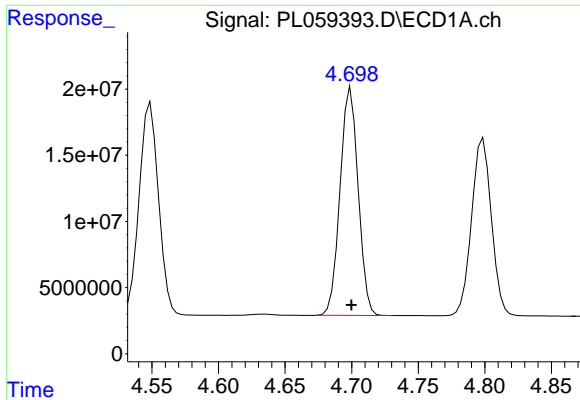
#5 Aldrin  
 R.T.: 5.572 min  
 Delta R.T.: 0.000 min  
 Response: 237127493  
 Conc: 78.51 ng/ml



#6 beta-BHC  
 R.T.: 4.493 min  
 Delta R.T.: 0.000 min  
 Response: 70844893  
 Conc: 76.58 ng/ml



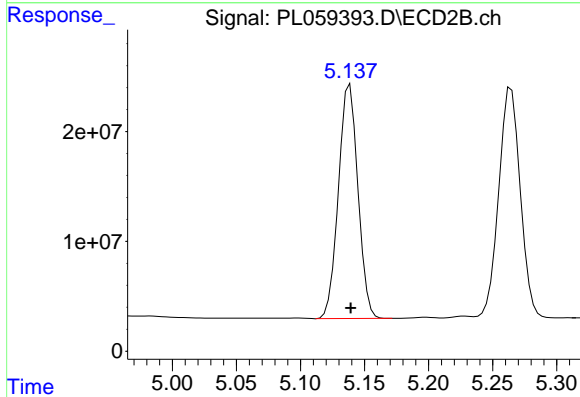
#6 beta-BHC  
 R.T.: 4.919 min  
 Delta R.T.: 0.000 min  
 Response: 104132623  
 Conc: 76.72 ng/ml



#7 delta-BHC

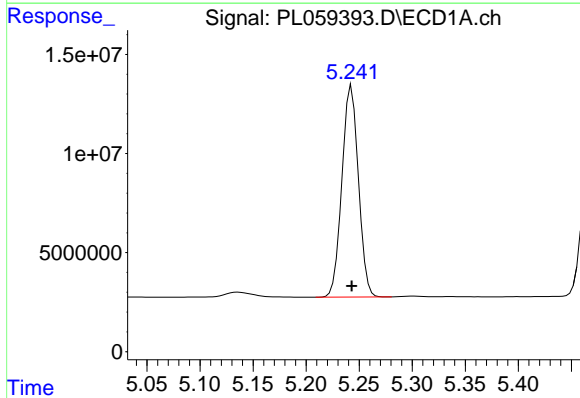
R.T.: 4.699 min  
 Delta R.T.: 0.000 min  
 Response: 163026081  
 Conc: 79.29 ng/ml

Instrument :  
 ECD\_L  
 ClientSampleId :  
 PSTDICC075



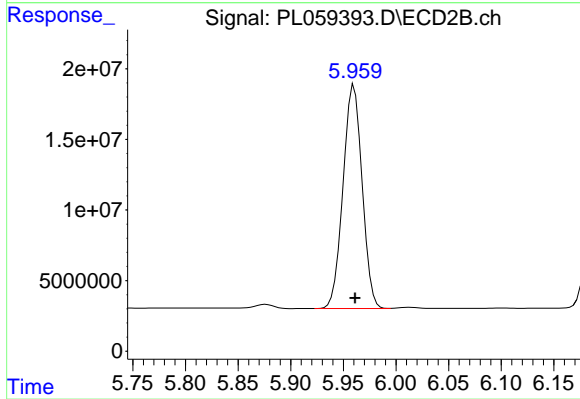
#7 delta-BHC

R.T.: 5.139 min  
 Delta R.T.: 0.000 min  
 Response: 225370872  
 Conc: 79.58 ng/ml



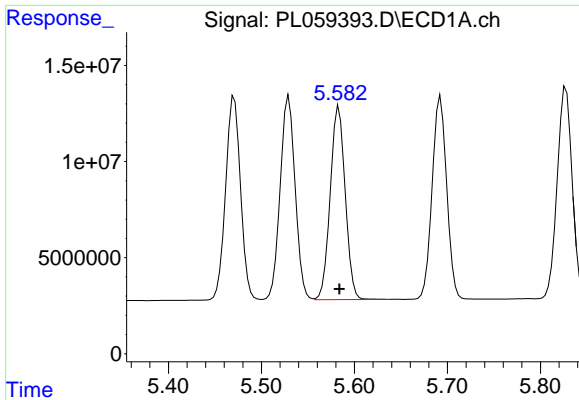
#8 Heptachlor epoxide

R.T.: 5.243 min  
 Delta R.T.: 0.000 min  
 Response: 115069306  
 Conc: 77.28 ng/ml



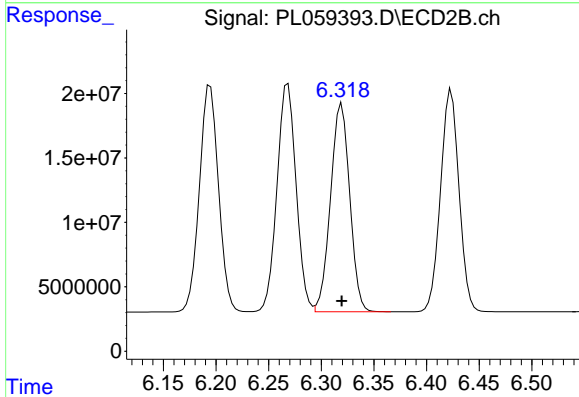
#8 Heptachlor epoxide

R.T.: 5.960 min  
 Delta R.T.: 0.000 min  
 Response: 200643011  
 Conc: 77.87 ng/ml

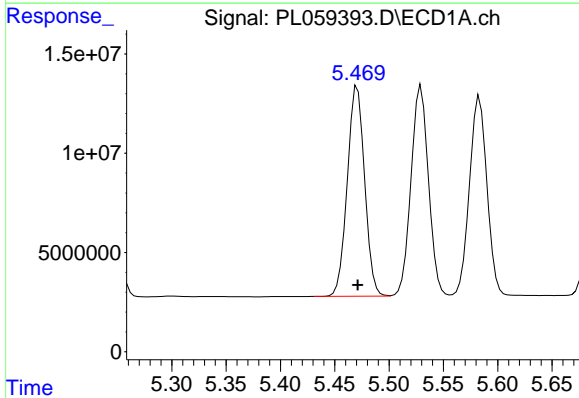


#9 Endosulfan I  
 R.T.: 5.583 min  
 Delta R.T.: 0.000 min  
 Response: 112817704  
 Conc: 77.48 ng/ml

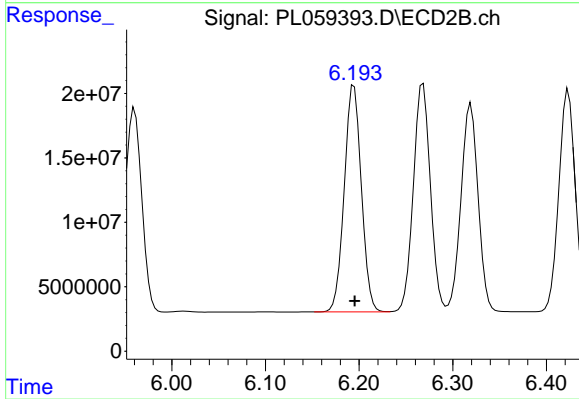
Instrument :  
 ECD\_L  
 ClientSampleId :  
 PSTDICC075



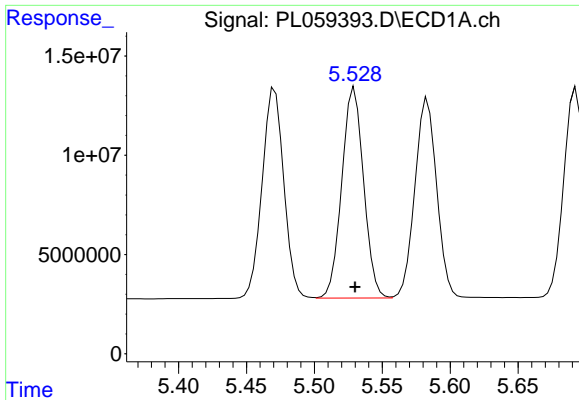
#9 Endosulfan I  
 R.T.: 6.319 min  
 Delta R.T.: 0.000 min  
 Response: 204988099  
 Conc: 77.29 ng/ml



#10 gamma-Chlordane  
 R.T.: 5.471 min  
 Delta R.T.: 0.000 min  
 Response: 117874862  
 Conc: 77.73 ng/ml



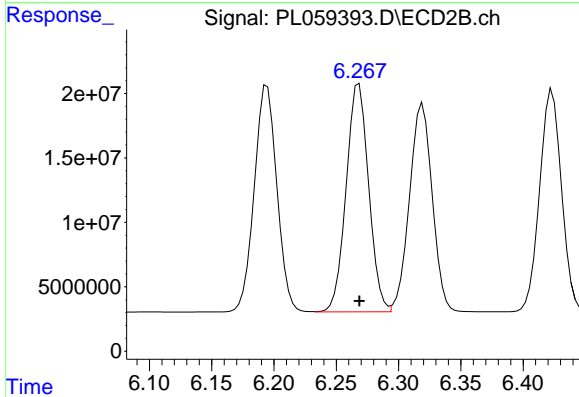
#10 gamma-Chlordane  
 R.T.: 6.195 min  
 Delta R.T.: 0.000 min  
 Response: 223069315  
 Conc: 77.50 ng/ml



#11 alpha-Chlordane

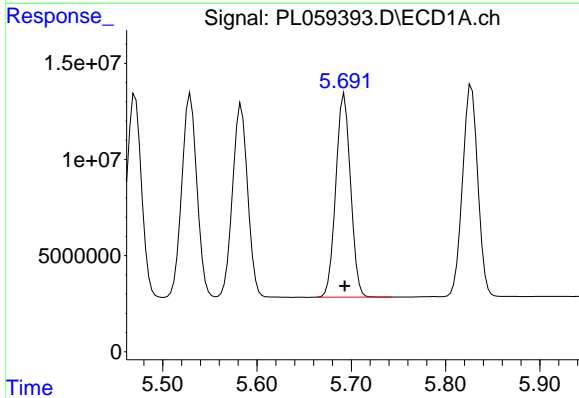
R.T.: 5.529 min  
 Delta R.T.: 0.000 min  
 Response: 118695145  
 Conc: 77.40 ng/ml

Instrument :  
 ECD\_L  
 ClientSampleId :  
 PSTDICC075



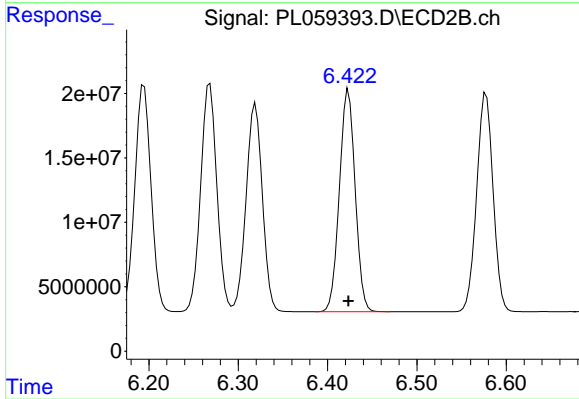
#11 alpha-Chlordane

R.T.: 6.268 min  
 Delta R.T.: 0.000 min  
 Response: 223460548  
 Conc: 77.21 ng/ml



#12 4,4'-DDE

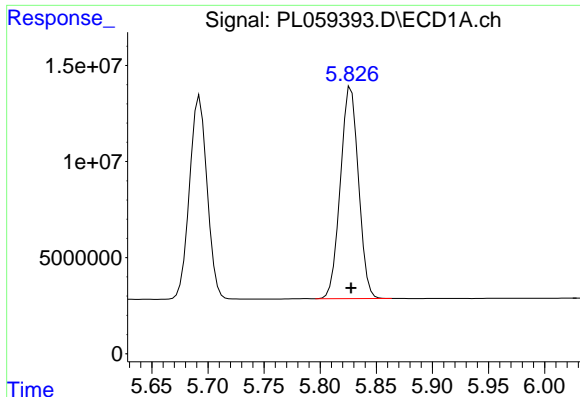
R.T.: 5.693 min  
 Delta R.T.: 0.000 min  
 Response: 115159493  
 Conc: 79.20 ng/ml



#12 4,4'-DDE

R.T.: 6.423 min  
 Delta R.T.: 0.000 min  
 Response: 211192655  
 Conc: 78.91 ng/ml

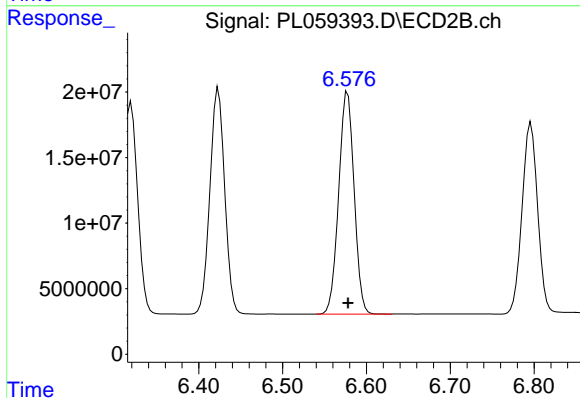




#13 Dieldrin

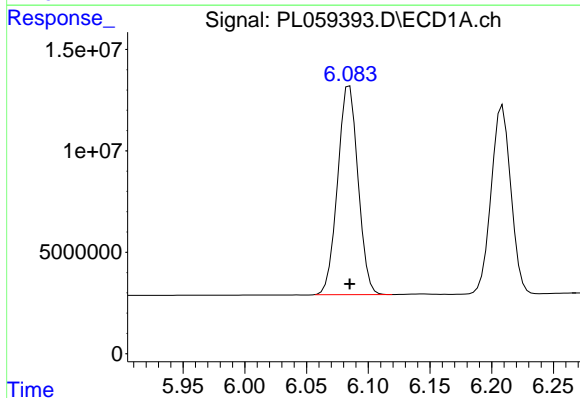
R.T.: 5.827 min  
 Delta R.T.: 0.000 min  
 Response: 123767736  
 Conc: 78.63 ng/ml

Instrument :  
 ECD\_L  
 ClientSampleId :  
 PSTDICC075



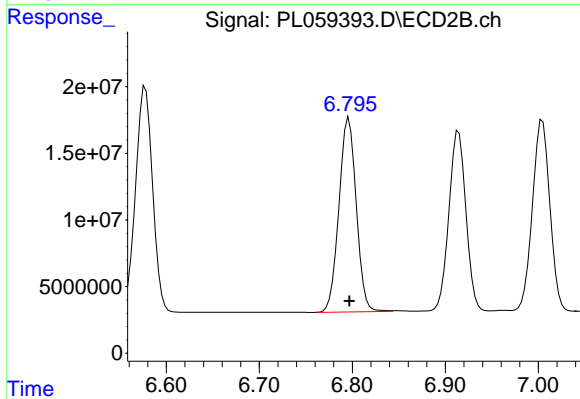
#13 Dieldrin

R.T.: 6.578 min  
 Delta R.T.: 0.000 min  
 Response: 216909562  
 Conc: 78.16 ng/ml



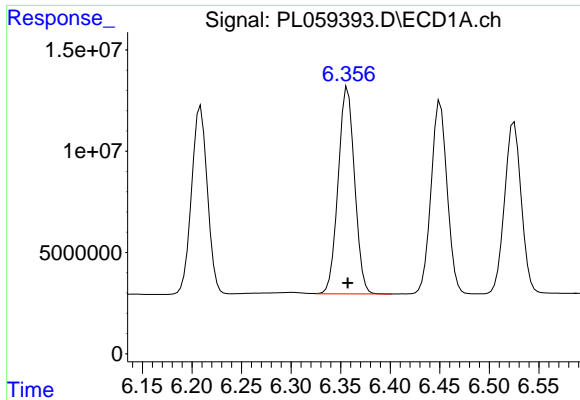
#14 Endrin

R.T.: 6.085 min  
 Delta R.T.: 0.000 min  
 Response: 118357819  
 Conc: 78.20 ng/ml



#14 Endrin

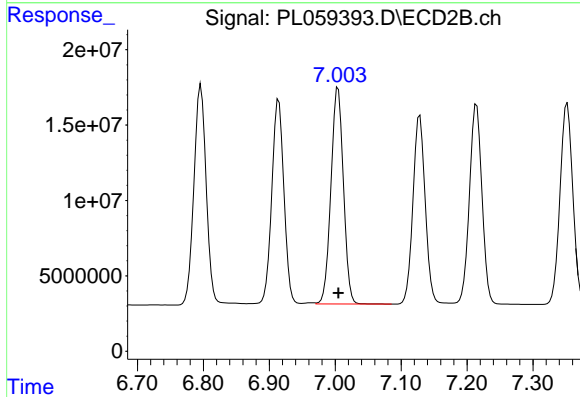
R.T.: 6.796 min  
 Delta R.T.: 0.000 min  
 Response: 188395955  
 Conc: 77.69 ng/ml



#15 Endosulfan II

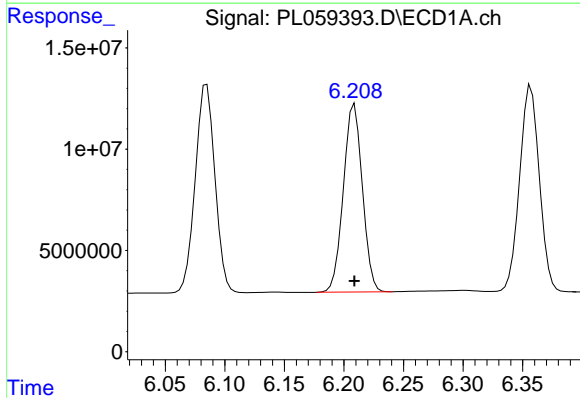
R.T.: 6.357 min  
 Delta R.T.: 0.000 min  
 Response: 117634552  
 Conc: 77.21 ng/ml

Instrument :  
 ECD\_L  
 ClientSampled :  
 PSTDICC075



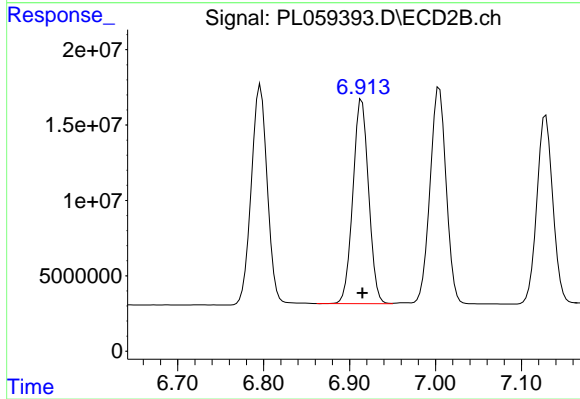
#15 Endosulfan II

R.T.: 7.004 min  
 Delta R.T.: 0.000 min  
 Response: 188460824  
 Conc: 76.70 ng/ml



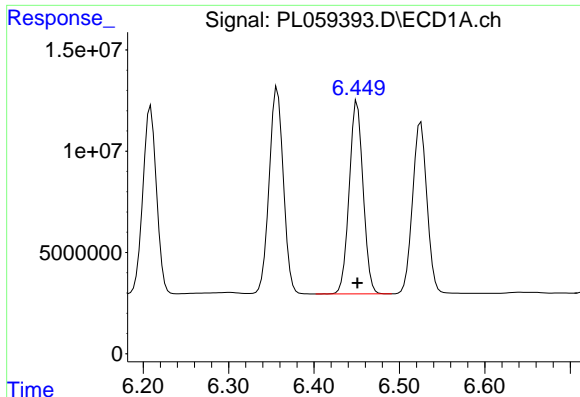
#16 4,4'-DDD

R.T.: 6.209 min  
 Delta R.T.: 0.000 min  
 Response: 103000061  
 Conc: 79.01 ng/ml



#16 4,4'-DDD

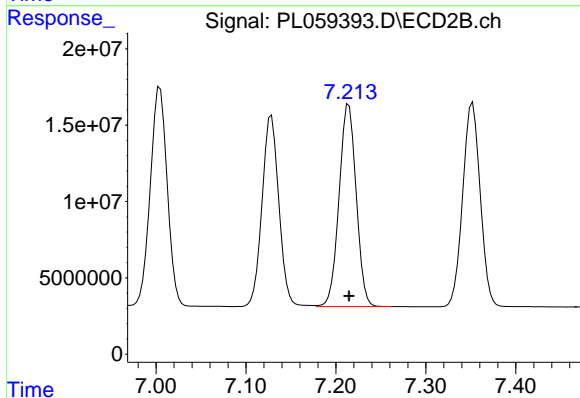
R.T.: 6.914 min  
 Delta R.T.: 0.000 min  
 Response: 172566518  
 Conc: 78.22 ng/ml



#17 4,4'-DDT

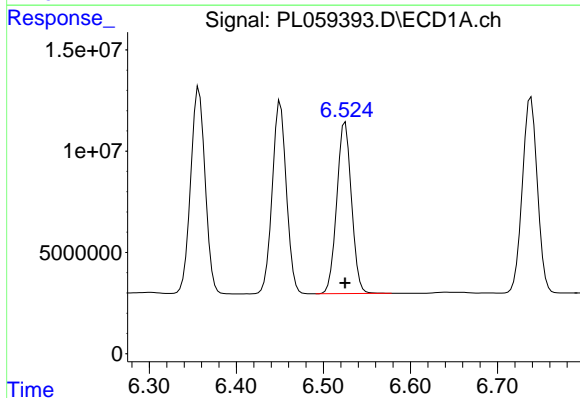
R.T.: 6.451 min  
 Delta R.T.: 0.000 min  
 Response: 107544763  
 Conc: 79.62 ng/ml

Instrument :  
 ECD\_L  
 ClientSampleId :  
 PSTDICC075



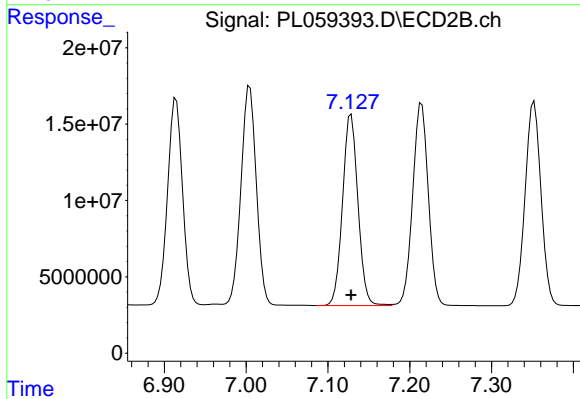
#17 4,4'-DDT

R.T.: 7.214 min  
 Delta R.T.: 0.000 min  
 Response: 175113390  
 Conc: 77.79 ng/ml



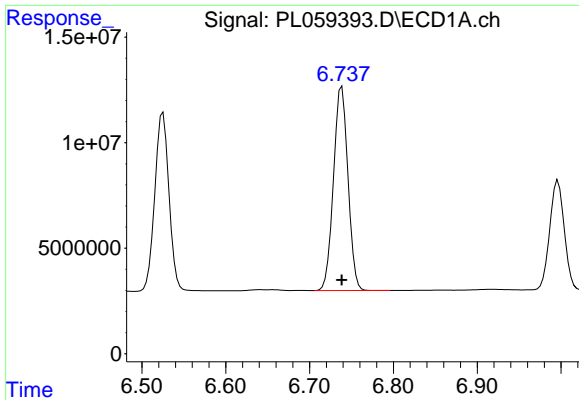
#18 Endrin aldehyde

R.T.: 6.525 min  
 Delta R.T.: 0.000 min  
 Response: 99613178  
 Conc: 76.78 ng/ml



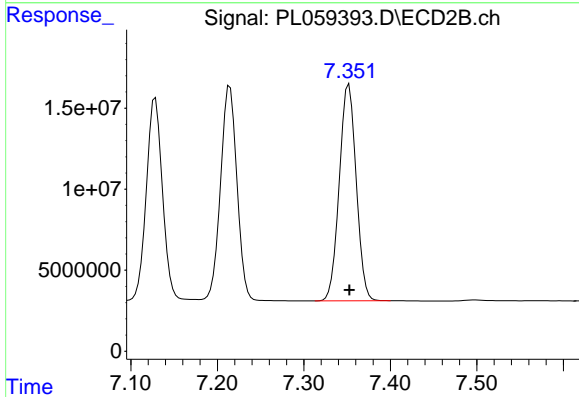
#18 Endrin aldehyde

R.T.: 7.128 min  
 Delta R.T.: 0.000 min  
 Response: 162670809  
 Conc: 76.16 ng/ml

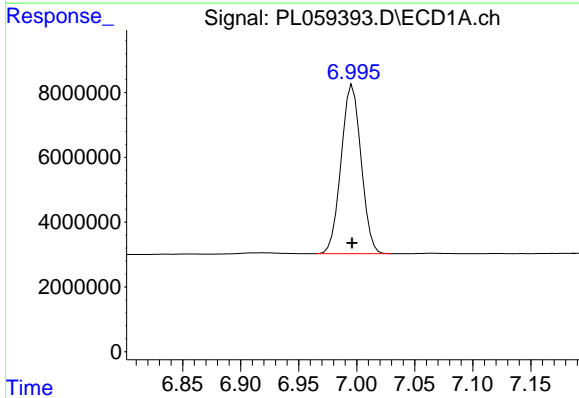


#19 Endosulfan Sulfate  
 R.T.: 6.739 min  
 Delta R.T.: 0.000 min  
 Response: 115952357  
 Conc: 77.01 ng/ml

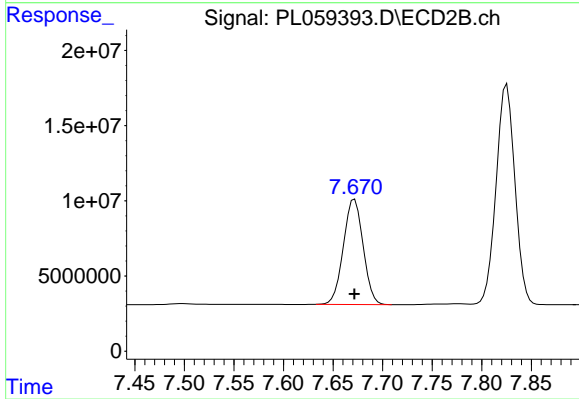
**Instrument :**  
 ECD\_L  
**ClientSampled :**  
 PSTDICC075



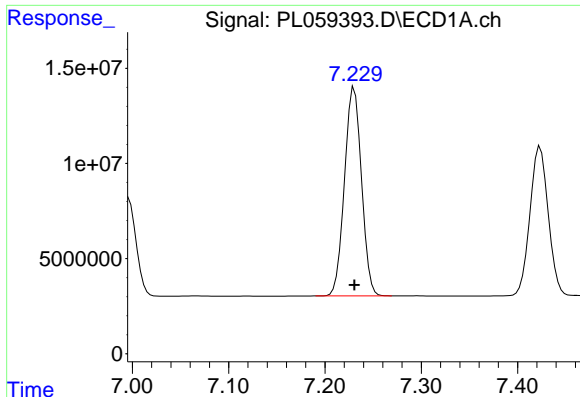
#19 Endosulfan Sulfate  
 R.T.: 7.352 min  
 Delta R.T.: 0.000 min  
 Response: 180574808  
 Conc: 76.35 ng/ml



#20 Methoxychlor  
 R.T.: 6.996 min  
 Delta R.T.: 0.000 min  
 Response: 62375781  
 Conc: 76.07 ng/ml



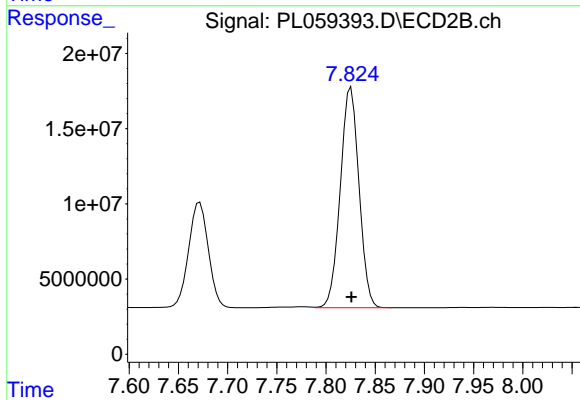
#20 Methoxychlor  
 R.T.: 7.672 min  
 Delta R.T.: 0.000 min  
 Response: 97047891  
 Conc: 75.07 ng/ml



#21 Endrin ketone

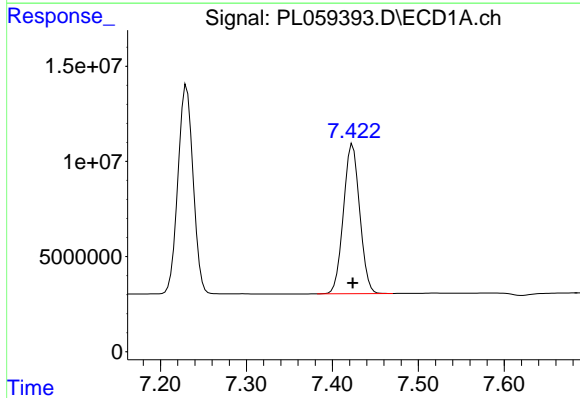
R.T.: 7.230 min  
Delta R.T.: 0.000 min  
Response: 134001169  
Conc: 77.24 ng/ml

Instrument :  
ECD\_L  
ClientSampleId :  
PSTDIC075



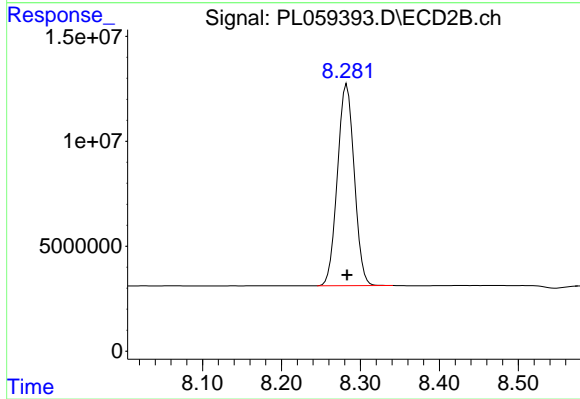
#21 Endrin ketone

R.T.: 7.825 min  
Delta R.T.: 0.000 min  
Response: 193682288  
Conc: 76.48 ng/ml



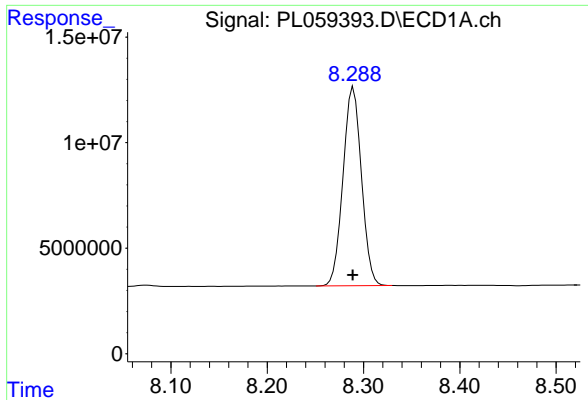
#22 Mirex

R.T.: 7.424 min  
Delta R.T.: 0.000 min  
Response: 103630431  
Conc: 75.26 ng/ml



#22 Mirex

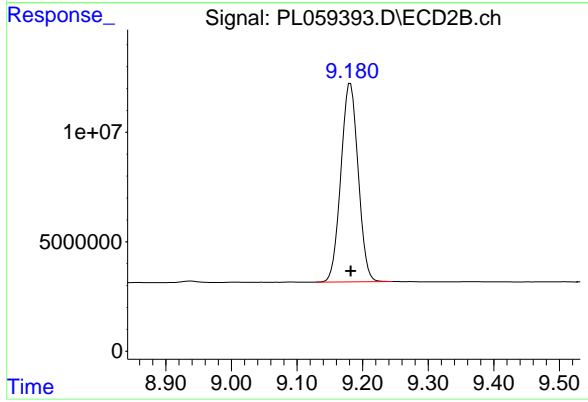
R.T.: 8.283 min  
Delta R.T.: 0.000 min  
Response: 142199807  
Conc: 74.15 ng/ml



#28 Decachlorobiphenyl

R.T.: 8.290 min  
Delta R.T.: 0.000 min  
Response: 124768756  
Conc: 75.25 ng/ml

Instrument :  
ECD\_L  
ClientSampleId :  
PSTDIC075



#28 Decachlorobiphenyl

R.T.: 9.181 min  
Delta R.T.: 0.000 min  
Response: 166013190  
Conc: 74.71 ng/ml