

Data Path : Z:\pestpcbsrv\HPCHEM1\ECD\_L\Data\PL062220\  
 Data File : PL059395.D  
 Signal(s) : Signal #1: ECD1A.ch Signal #2: ECD2B.ch  
 Acq On : 22 Jun 2020 12:36  
 Operator : AJ\MA  
 Sample : PSTDIC025  
 Misc :  
 ALS Vial : 8 Sample Multiplier: 1

Instrument :  
 ECD\_L  
 ClientSampleId :  
 PSTDIC025

Integration File signal 1: autoint1.e  
 Integration File signal 2: autoint2.e  
 Quant Time: Jun 22 13:28:46 2020  
 Quant Method : Z:\pestpcbsrv\HPCHEM1\ECD\_L\methods\PL062220.M  
 Quant Title : GC Extractables  
 QLast Update : Mon Jun 22 13:27:43 2020  
 Response via : Initial Calibration  
 Integrator: ChemStation

Volume Inj. : 1 µl  
 Signal #1 Phase : ZB-MR2 Signal #2 Phase: ZB-MR1  
 Signal #1 Info : 30M x 0.32mm x0.2 Signal #2 Info : 30M x 0.32mm x0.5µm

	Compound	RT#1	RT#2	Resp#1	Resp#2	ng/ml	ng/ml
-----							
System Monitoring Compounds							
1)	SA Tetrachlo...	3.517	4.071	44595674	64537940	25.142	25.240
28)	SA Decachlor...	8.289	9.181	43056543	58274291	25.967	26.225
Target Compounds							
2)	A alpha-BHC	3.958	4.463	61898989	82204701	24.121	23.828
3)	MA gamma-BHC...	4.244	4.750	55310438	76196228	24.435	24.244
4)	MA Heptachlor	4.549	5.264	52675306	80263829	25.077	25.280
5)	MB Aldrin	4.799	5.572	43638726	74552628	24.518	24.683
6)	B beta-BHC	4.493	4.919	24081502	34402912	26.033	25.346
7)	B delta-BHC	4.699	5.139	49342649	67987747	24.000	24.008
8)	B Heptachlo...	5.243	5.960	37424363	63511480	25.134	24.649
9)	A Endosulfan I	5.583	6.319	36372405	66949013	24.980	25.243
10)	B gamma-Chl...	5.471	6.194	37808802	72011090	24.933	25.018
11)	B alpha-Chl...	5.530	6.268	38361025	72942717	25.015	25.204
12)	B 4,4'-DDE	5.693	6.423	35234183	65384116	24.233	24.432
13)	MA Dieldrin	5.827	6.576	38571577	68744824	24.506	24.771
14)	MA Endrin	6.084	6.796	37177838	60108854	24.563	24.787
15)	B Endosulfa...	6.356	7.004	38233448	63207771	25.095	25.724
16)	A 4,4'-DDD	6.209	6.914	31883394	55063049	24.456	24.957
17)	MA 4,4'-DDT	6.451	7.214	32295654	55725753	23.911	24.754
18)	B Endrin al...	6.525	7.128	33110198	55382820	25.521	25.931
19)	B Endosulfa...	6.738	7.352	37996892	60614950	25.235	25.628
20)	A Methoxychlor	6.996	7.671	20606888	33517294	25.130	25.927
21)	B Endrin ke...	7.231	7.825	43400483	64217956	25.016	25.357
22)	Mirex	7.424	8.282	36300209	50801646	26.364	26.491

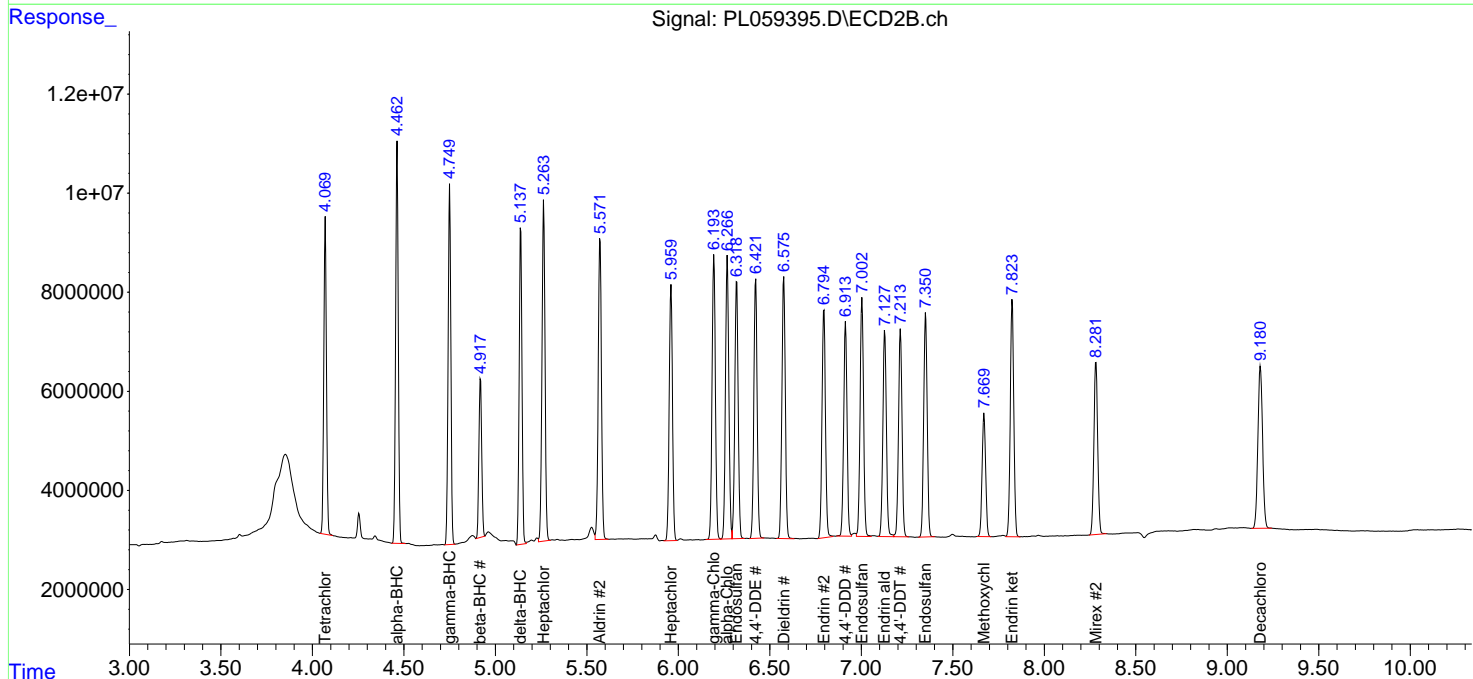
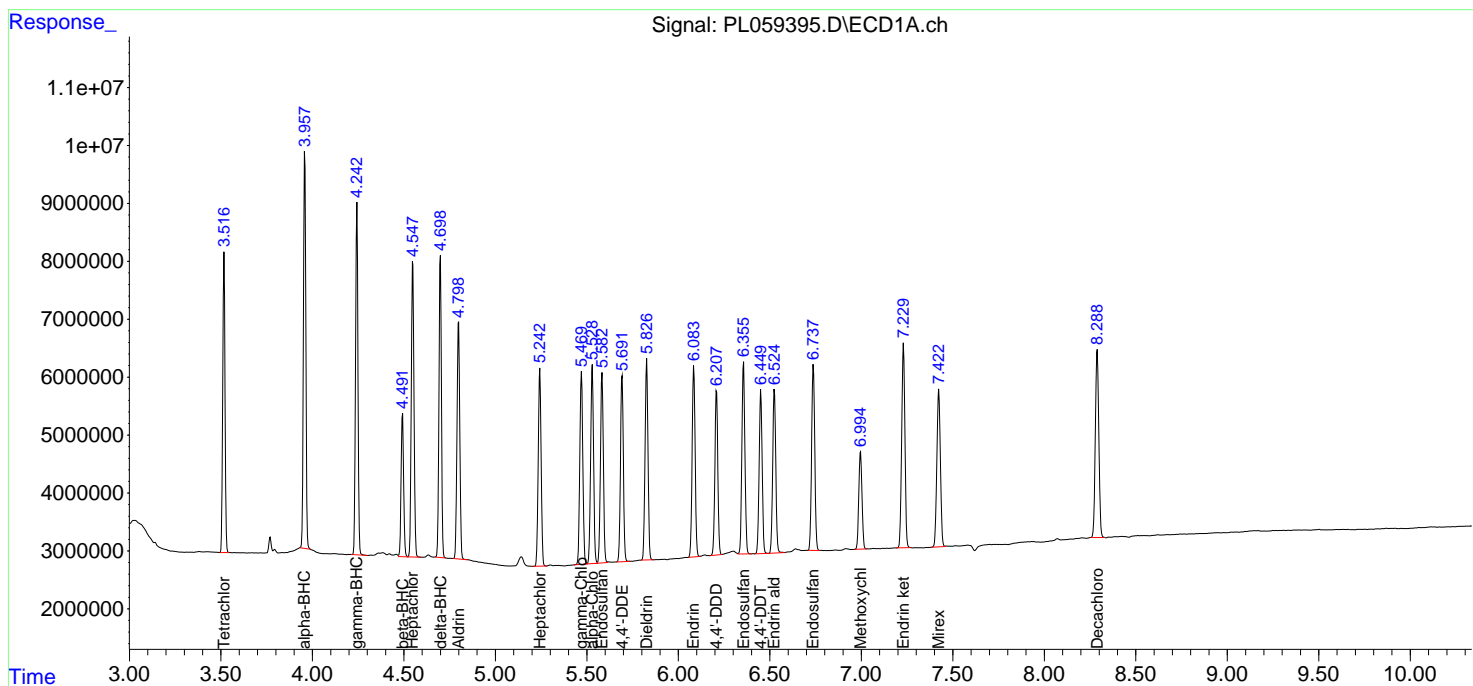
(f)=RT Delta > 1/2 Window (#)=Amounts differ by > 25% (m)=manual int.

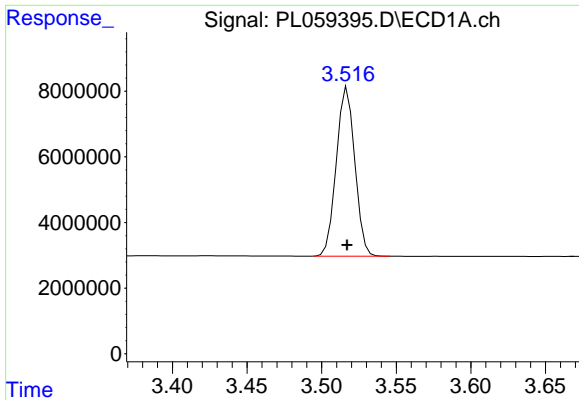
Data Path : Z:\pestpcbsrv\HPCHEM1\ECD\_L\Data\PL062220\  
 Data File : PL059395.D  
 Signal(s) : Signal #1: ECD1A.ch Signal #2: ECD2B.ch  
 Acq On : 22 Jun 2020 12:36  
 Operator : AJ\MA  
 Sample : PSTDICC025  
 Misc :  
 ALS Vial : 8 Sample Multiplier: 1

Instrument :  
 ECD\_L  
 Client Sampled :  
 PSTDICC025

Integration File signal 1: autoint1.e  
 Integration File signal 2: autoint2.e  
 Quant Time: Jun 22 13:28:46 2020  
 Quant Method : Z:\pestpcbsrv\HPCHEM1\ECD\_L\methods\PL062220.M  
 Quant Title : GC Extractables  
 QLast Update : Mon Jun 22 13:27:43 2020  
 Response via : Initial Calibration  
 Integrator: ChemStation

Volume Inj. : 1 µl  
 Signal #1 Phase : ZB-MR2 Signal #2 Phase: ZB-MR1  
 Signal #1 Info : 30M x 0.32mm x0.2 Signal #2 Info : 30M x 0.32mm x0.5µm

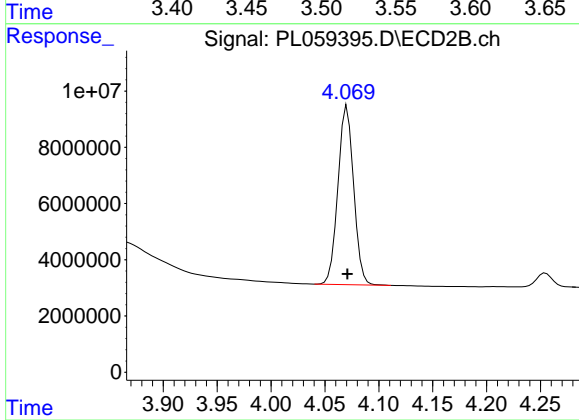




#1 Tetrachloro-m-xylene

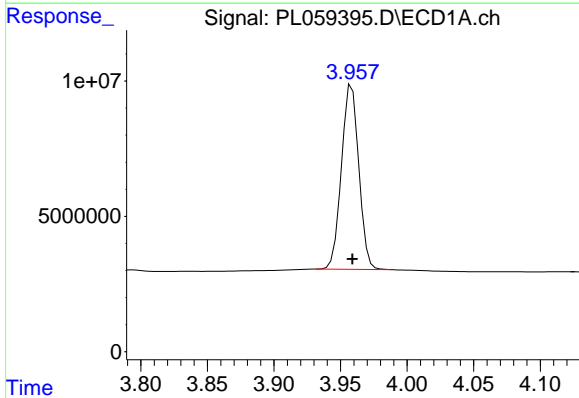
R.T.: 3.517 min  
Delta R.T.: 0.000 min  
Response: 44595674  
Conc: 25.14 ng/ml

Instrument :  
ECD\_L  
ClientSampleId :  
PSTDIC025



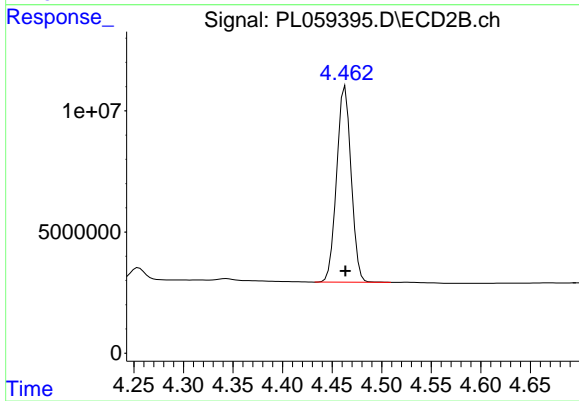
#1 Tetrachloro-m-xylene

R.T.: 4.071 min  
Delta R.T.: 0.000 min  
Response: 64537940  
Conc: 25.24 ng/ml



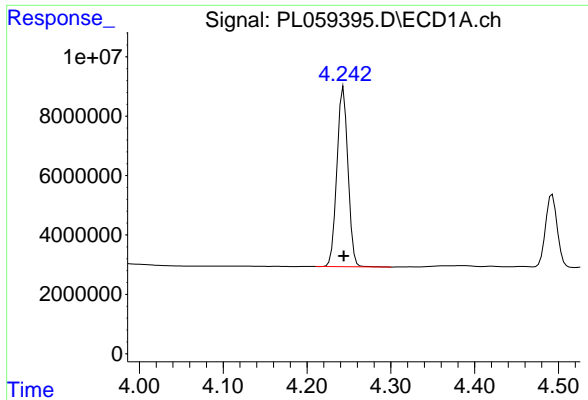
#2 alpha-BHC

R.T.: 3.958 min  
Delta R.T.: 0.000 min  
Response: 61898989  
Conc: 24.12 ng/ml



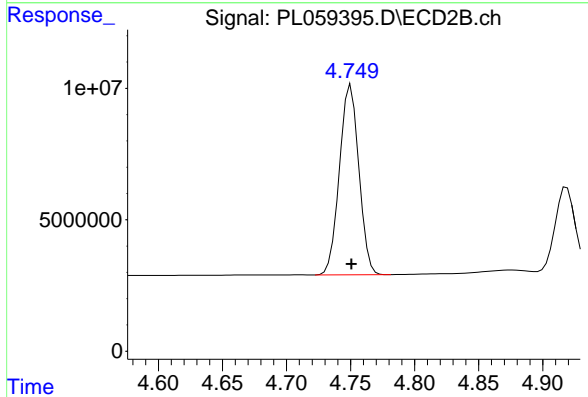
#2 alpha-BHC

R.T.: 4.463 min  
Delta R.T.: 0.000 min  
Response: 82204701  
Conc: 23.83 ng/ml

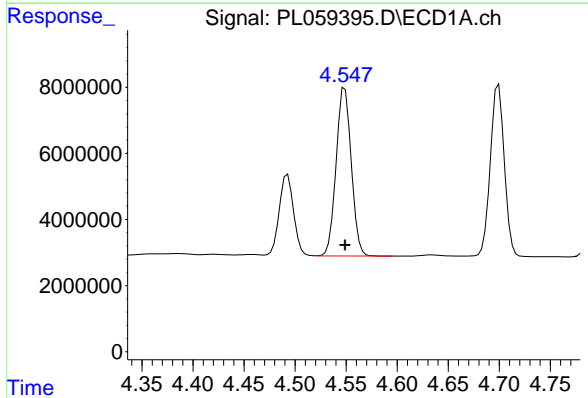


#3 gamma-BHC (Lindane)  
 R.T.: 4.244 min  
 Delta R.T.: 0.000 min  
 Response: 55310438  
 Conc: 24.44 ng/ml

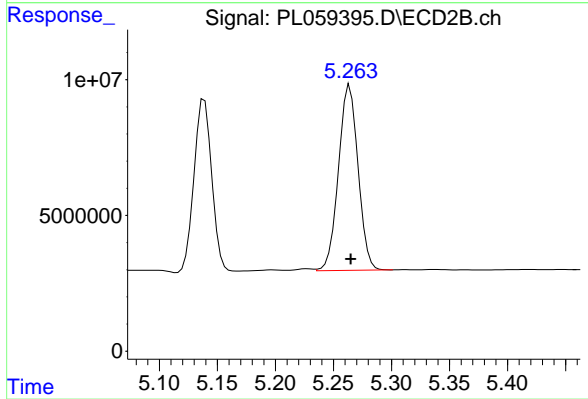
Instrument :  
 ECD\_L  
 ClientSampleId :  
 PSTDICC025



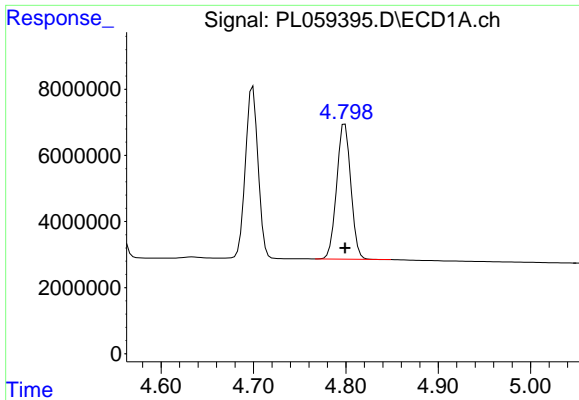
#3 gamma-BHC (Lindane)  
 R.T.: 4.750 min  
 Delta R.T.: 0.000 min  
 Response: 76196228  
 Conc: 24.24 ng/ml



#4 Heptachlor  
 R.T.: 4.549 min  
 Delta R.T.: 0.000 min  
 Response: 52675306  
 Conc: 25.08 ng/ml

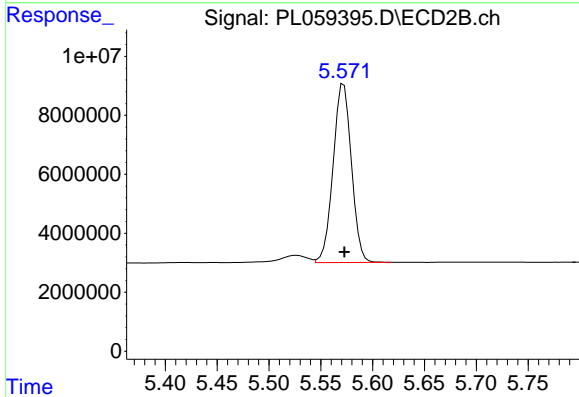


#4 Heptachlor  
 R.T.: 5.264 min  
 Delta R.T.: 0.000 min  
 Response: 80263829  
 Conc: 25.28 ng/ml

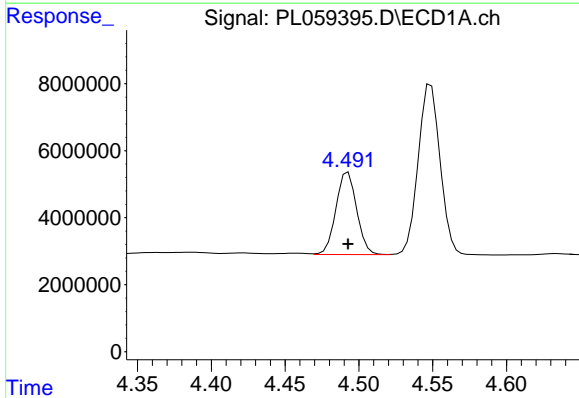


#5 Aldrin  
 R.T.: 4.799 min  
 Delta R.T.: 0.000 min  
 Response: 43638726  
 Conc: 24.52 ng/ml

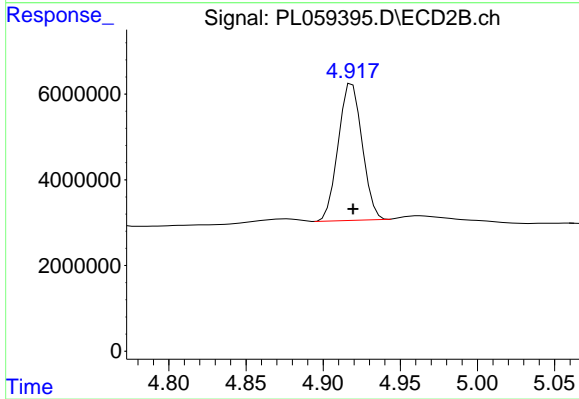
Instrument :  
 ECD\_L  
 ClientSampleId :  
 PSTDICC025



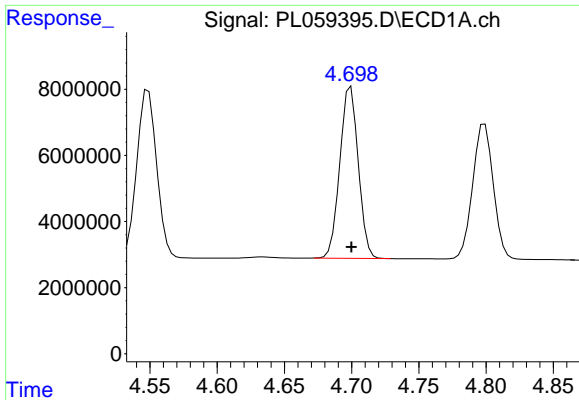
#5 Aldrin  
 R.T.: 5.572 min  
 Delta R.T.: 0.000 min  
 Response: 74552628  
 Conc: 24.68 ng/ml



#6 beta-BHC  
 R.T.: 4.493 min  
 Delta R.T.: 0.000 min  
 Response: 24081502  
 Conc: 26.03 ng/ml



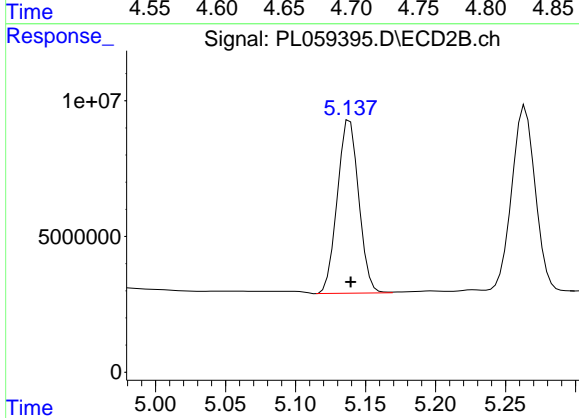
#6 beta-BHC  
 R.T.: 4.919 min  
 Delta R.T.: 0.000 min  
 Response: 34402912  
 Conc: 25.35 ng/ml



#7 delta-BHC

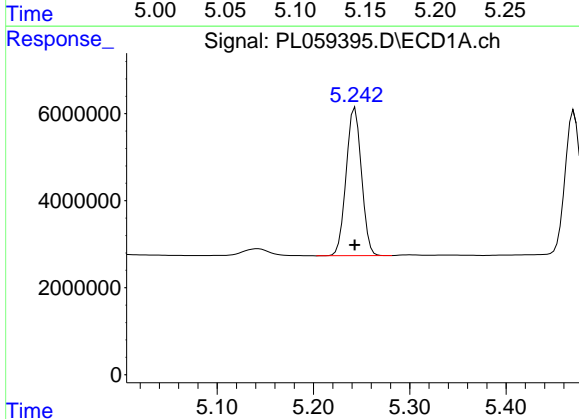
R.T.: 4.699 min  
Delta R.T.: 0.000 min  
Response: 49342649  
Conc: 24.00 ng/ml

Instrument :  
ECD\_L  
ClientSampled :  
PSTDICC025



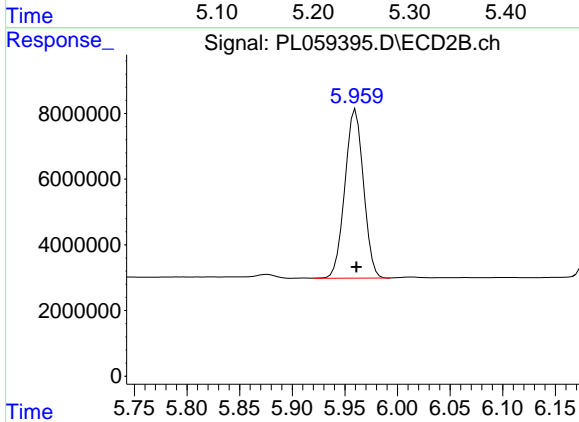
#7 delta-BHC

R.T.: 5.139 min  
Delta R.T.: 0.000 min  
Response: 67987747  
Conc: 24.01 ng/ml



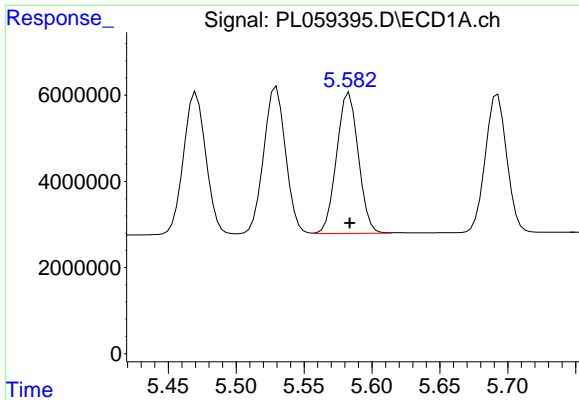
#8 Heptachlor epoxide

R.T.: 5.243 min  
Delta R.T.: 0.000 min  
Response: 37424363  
Conc: 25.13 ng/ml



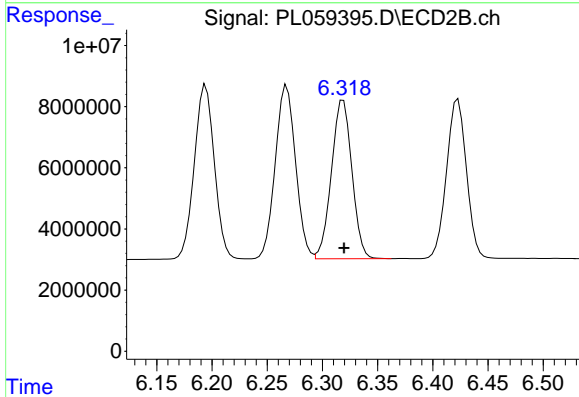
#8 Heptachlor epoxide

R.T.: 5.960 min  
Delta R.T.: 0.000 min  
Response: 63511480  
Conc: 24.65 ng/ml

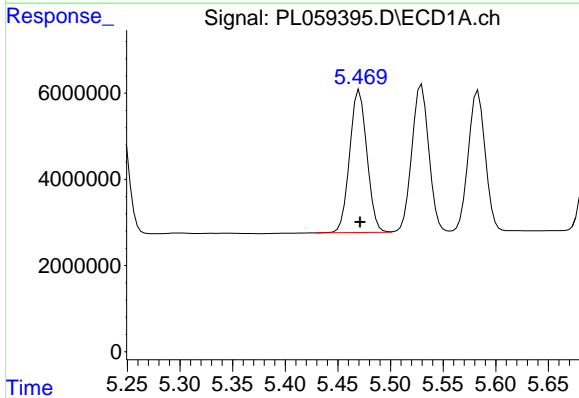


#9 Endosulfan I  
 R.T.: 5.583 min  
 Delta R.T.: 0.000 min  
 Response: 36372405  
 Conc: 24.98 ng/ml

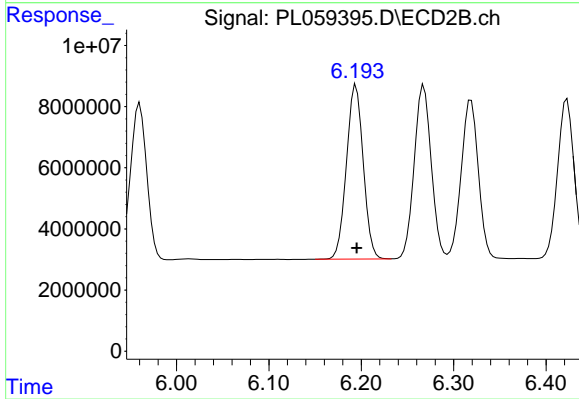
Instrument :  
 ECD\_L  
 ClientSampleId :  
 PSTDICC025



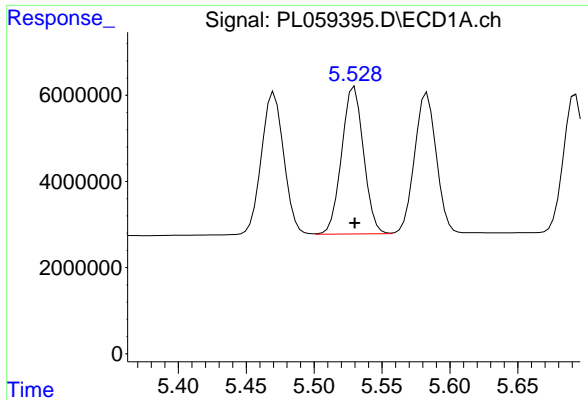
#9 Endosulfan I  
 R.T.: 6.319 min  
 Delta R.T.: 0.000 min  
 Response: 66949013  
 Conc: 25.24 ng/ml



#10 gamma-Chlordane  
 R.T.: 5.471 min  
 Delta R.T.: 0.000 min  
 Response: 37808802  
 Conc: 24.93 ng/ml

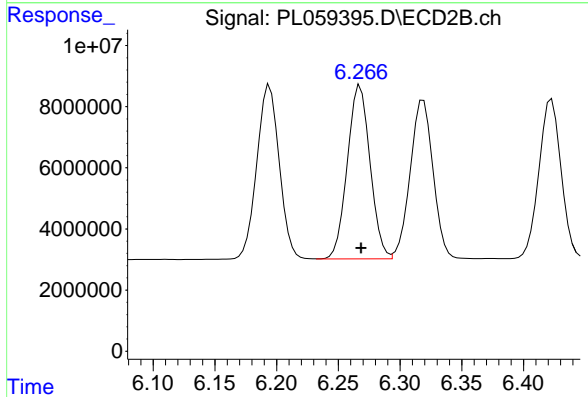


#10 gamma-Chlordane  
 R.T.: 6.194 min  
 Delta R.T.: 0.000 min  
 Response: 72011090  
 Conc: 25.02 ng/ml

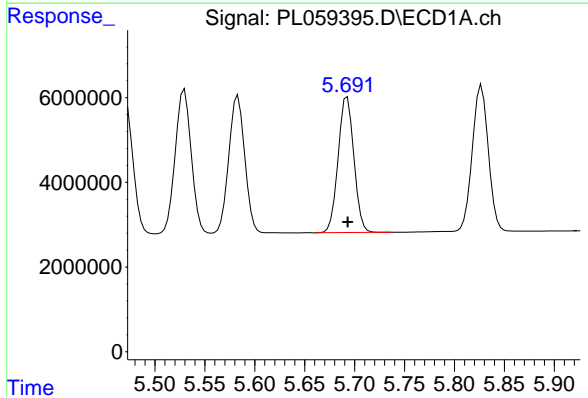


#11 alpha-Chlordane  
 R.T.: 5.530 min  
 Delta R.T.: 0.000 min  
 Response: 38361025  
 Conc: 25.02 ng/ml

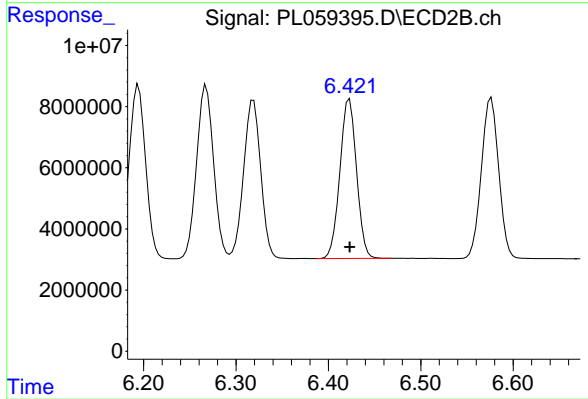
Instrument :  
 ECD\_L  
 ClientSampleId :  
 PSTDICC025



#11 alpha-Chlordane  
 R.T.: 6.268 min  
 Delta R.T.: 0.000 min  
 Response: 72942717  
 Conc: 25.20 ng/ml

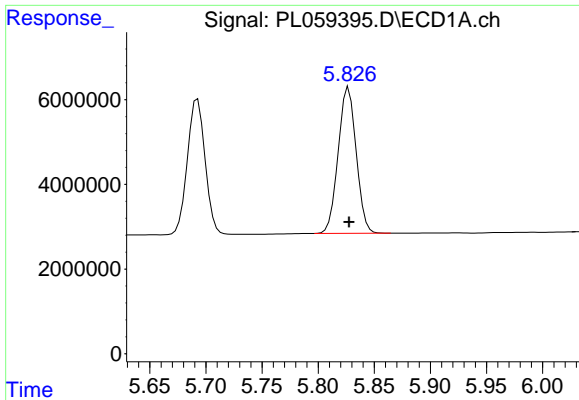


#12 4,4'-DDE  
 R.T.: 5.693 min  
 Delta R.T.: 0.000 min  
 Response: 35234183  
 Conc: 24.23 ng/ml



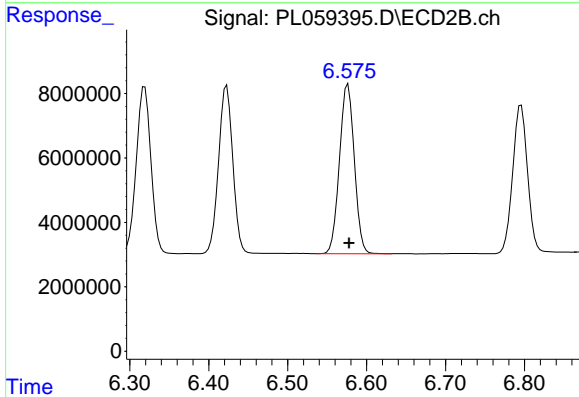
#12 4,4'-DDE  
 R.T.: 6.423 min  
 Delta R.T.: 0.000 min  
 Response: 65384116  
 Conc: 24.43 ng/ml



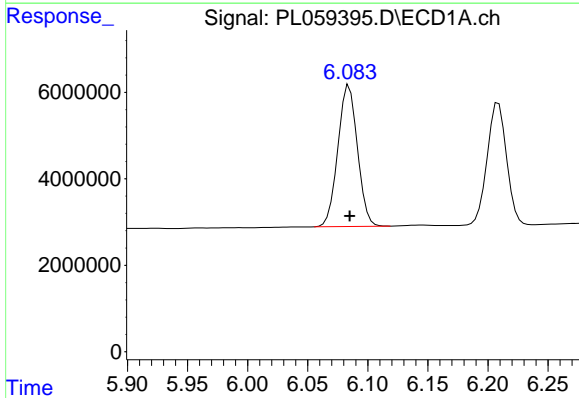


#13 Dieldrin  
 R.T.: 5.827 min  
 Delta R.T.: 0.000 min  
 Response: 38571577  
 Conc: 24.51 ng/ml

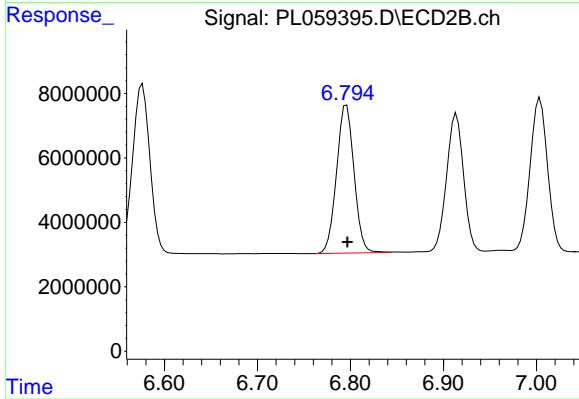
Instrument :  
 ECD\_L  
 ClientSampleId :  
 PSTDICC025



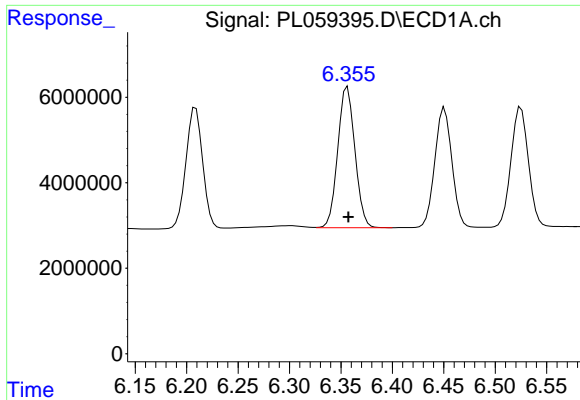
#13 Dieldrin  
 R.T.: 6.576 min  
 Delta R.T.: -0.002 min  
 Response: 68744824  
 Conc: 24.77 ng/ml



#14 Endrin  
 R.T.: 6.084 min  
 Delta R.T.: 0.000 min  
 Response: 37177838  
 Conc: 24.56 ng/ml

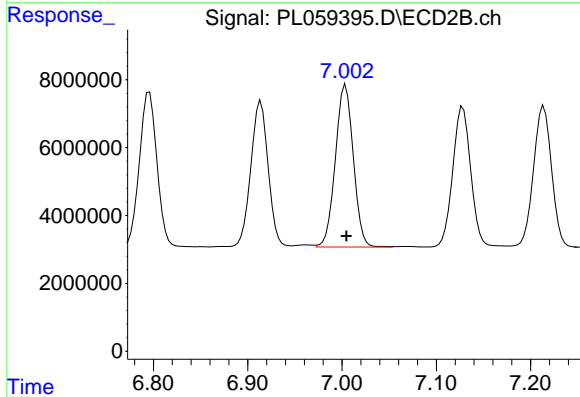


#14 Endrin  
 R.T.: 6.796 min  
 Delta R.T.: -0.001 min  
 Response: 60108854  
 Conc: 24.79 ng/ml

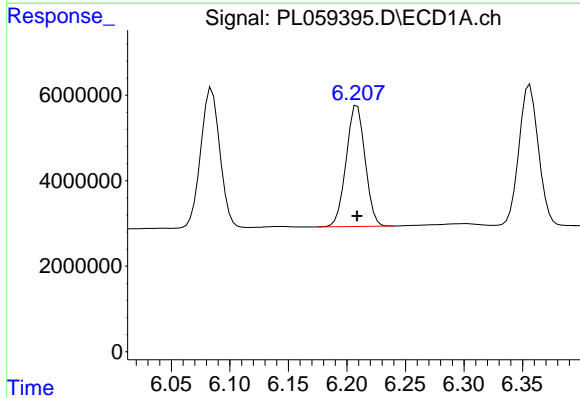


#15 Endosulfan II  
 R.T.: 6.356 min  
 Delta R.T.: 0.000 min  
 Response: 38233448  
 Conc: 25.10 ng/ml

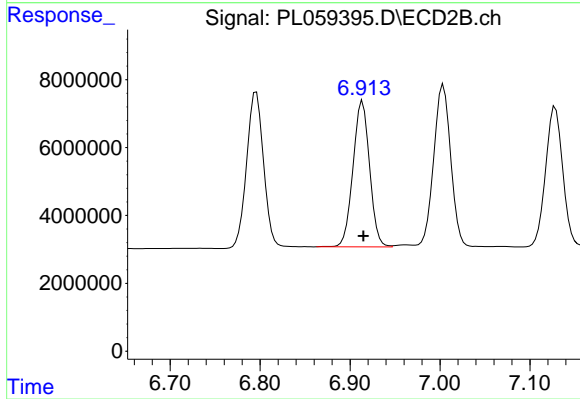
Instrument :  
 ECD\_L  
 ClientSampled :  
 PSTDICC025



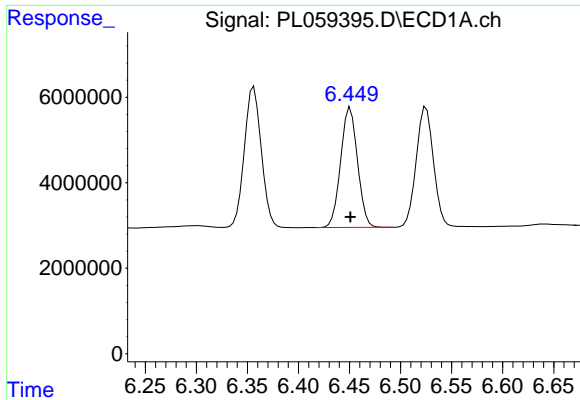
#15 Endosulfan II  
 R.T.: 7.004 min  
 Delta R.T.: 0.000 min  
 Response: 63207771  
 Conc: 25.72 ng/ml



#16 4,4'-DDD  
 R.T.: 6.209 min  
 Delta R.T.: 0.000 min  
 Response: 31883394  
 Conc: 24.46 ng/ml

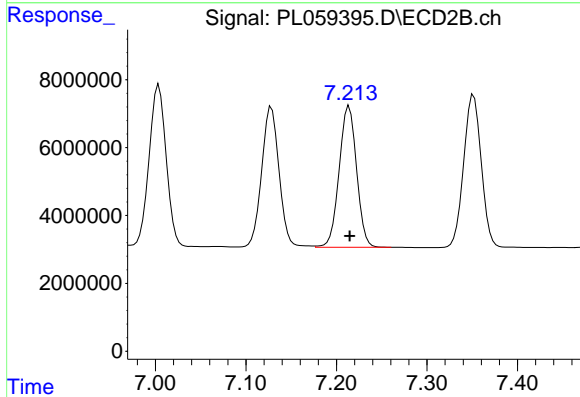


#16 4,4'-DDD  
 R.T.: 6.914 min  
 Delta R.T.: 0.000 min  
 Response: 55063049  
 Conc: 24.96 ng/ml

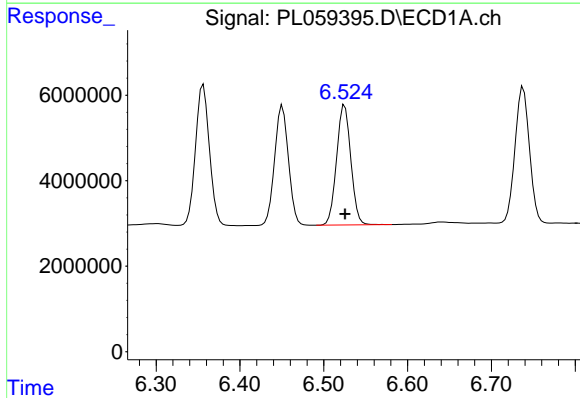


#17 4,4'-DDT  
 R.T.: 6.451 min  
 Delta R.T.: 0.000 min  
 Response: 32295654  
 Conc: 23.91 ng/ml

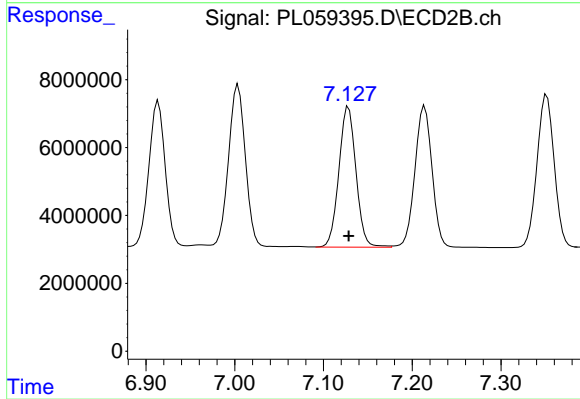
Instrument :  
 ECD\_L  
 ClientSampled :  
 PSTDICC025



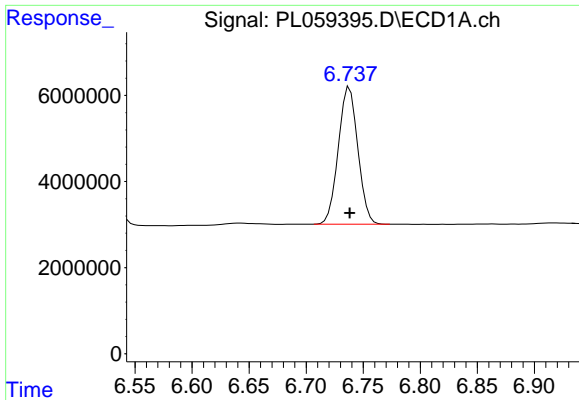
#17 4,4'-DDT  
 R.T.: 7.214 min  
 Delta R.T.: 0.000 min  
 Response: 55725753  
 Conc: 24.75 ng/ml



#18 Endrin aldehyde  
 R.T.: 6.525 min  
 Delta R.T.: 0.000 min  
 Response: 33110198  
 Conc: 25.52 ng/ml



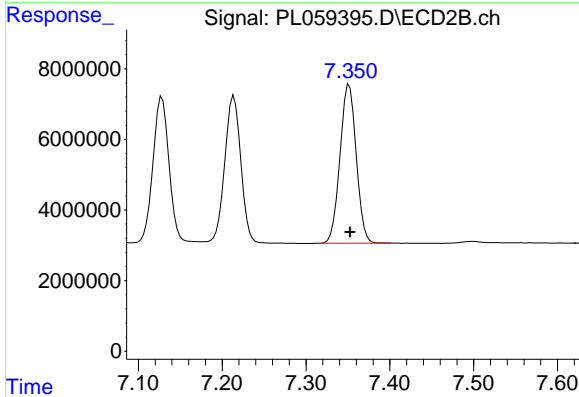
#18 Endrin aldehyde  
 R.T.: 7.128 min  
 Delta R.T.: 0.000 min  
 Response: 55382820  
 Conc: 25.93 ng/ml



#19 Endosulfan Sulfate

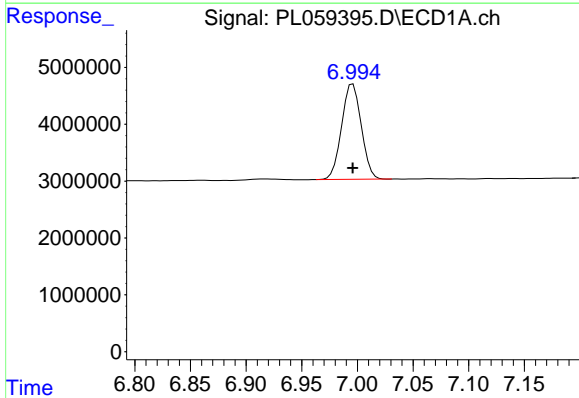
R.T.: 6.738 min  
 Delta R.T.: 0.000 min  
 Response: 37996892  
 Conc: 25.24 ng/ml

Instrument :  
 ECD\_L  
 ClientSampled :  
 PSTDICC025



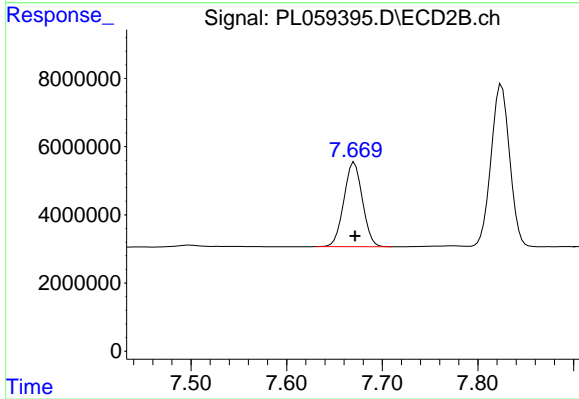
#19 Endosulfan Sulfate

R.T.: 7.352 min  
 Delta R.T.: 0.000 min  
 Response: 60614950  
 Conc: 25.63 ng/ml



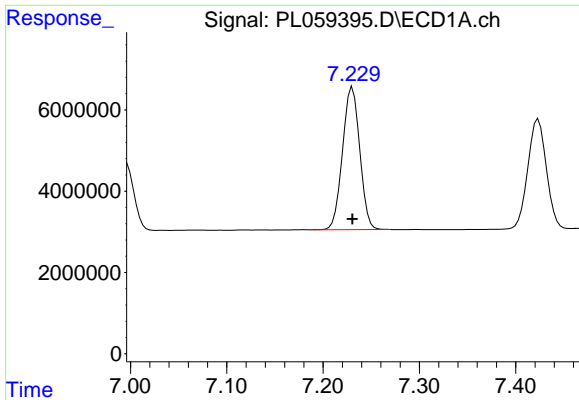
#20 Methoxychlor

R.T.: 6.996 min  
 Delta R.T.: 0.000 min  
 Response: 20606888  
 Conc: 25.13 ng/ml



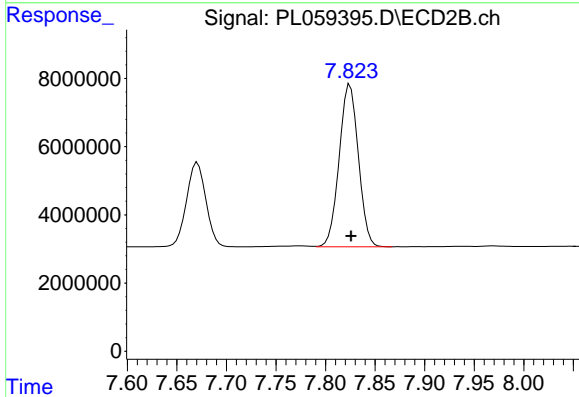
#20 Methoxychlor

R.T.: 7.671 min  
 Delta R.T.: 0.000 min  
 Response: 33517294  
 Conc: 25.93 ng/ml

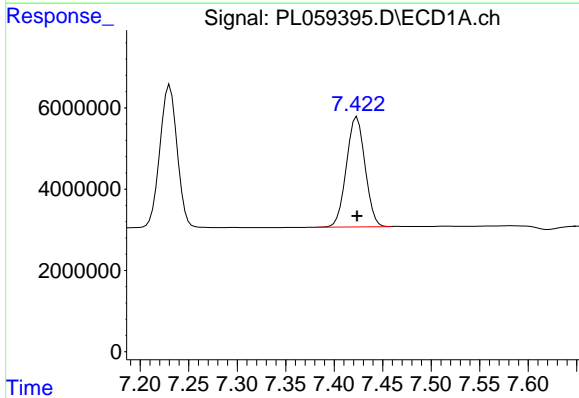


#21 Endrin ketone  
R.T.: 7.231 min  
Delta R.T.: 0.000 min  
Response: 43400483  
Conc: 25.02 ng/ml

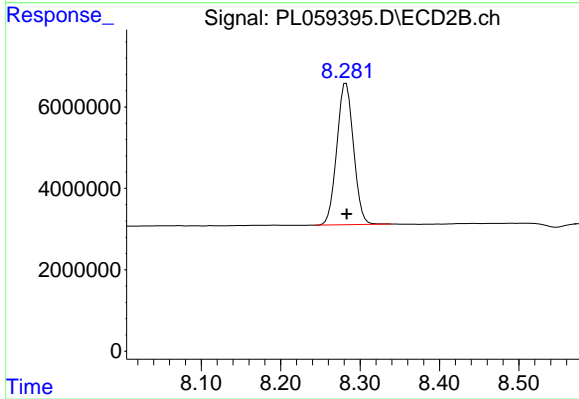
Instrument :  
ECD\_L  
ClientSampled :  
PSTDICC025



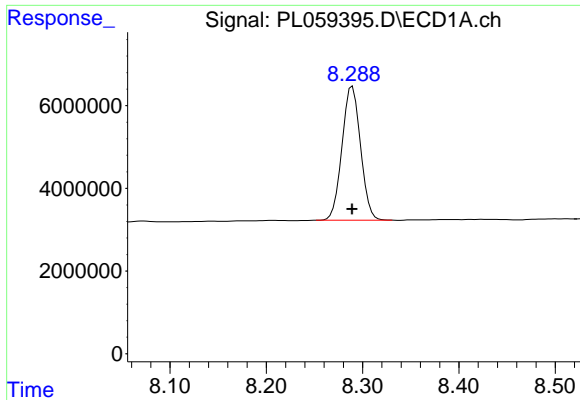
#21 Endrin ketone  
R.T.: 7.825 min  
Delta R.T.: 0.000 min  
Response: 64217956  
Conc: 25.36 ng/ml



#22 Mirex  
R.T.: 7.424 min  
Delta R.T.: 0.000 min  
Response: 36300209  
Conc: 26.36 ng/ml



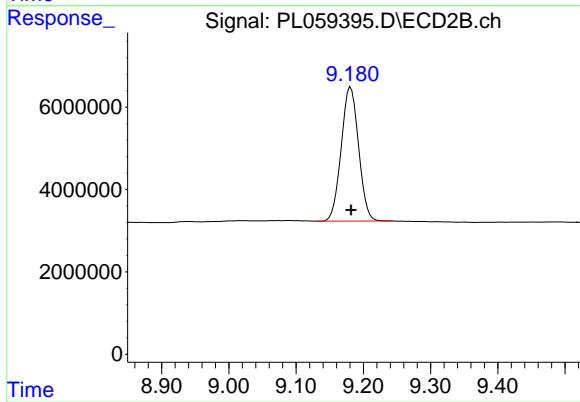
#22 Mirex  
R.T.: 8.282 min  
Delta R.T.: 0.000 min  
Response: 50801646  
Conc: 26.49 ng/ml



#28 Decachlorobiphenyl

R.T.: 8.289 min  
Delta R.T.: 0.000 min  
Response: 43056543  
Conc: 25.97 ng/ml

Instrument :  
ECD\_L  
ClientSampleId :  
PSTDIC025



#28 Decachlorobiphenyl

R.T.: 9.181 min  
Delta R.T.: 0.000 min  
Response: 58274291  
Conc: 26.22 ng/ml