

Data Path : Z:\pestpcbsrv\HPCHEM1\ECD_L\Data\PL062220\
 Data File : PL059397.D
 Signal(s) : Signal #1: ECD1A.ch Signal #2: ECD2B.ch
 Acq On : 22 Jun 2020 13:04
 Operator : AJ\MA
 Sample : PCHLORICC500
 Misc :
 ALS Vial : 10 Sample Multiplier: 1

Instrument :
 ECD_L
 ClientSampleId :
 PCHLORICC500

Integration File signal 1: autoint1.e
 Integration File signal 2: autoint2.e
 Quant Time: Jun 22 14:06:53 2020
 Quant Method : Z:\pestpcbsrv\HPCHEM1\ECD_L\methods\PL062220.M
 Quant Title : GC Extractables
 QLast Update : Mon Jun 22 14:06:31 2020
 Response via : Initial Calibration
 Integrator: ChemStation

Volume Inj. : 1 µl
 Signal #1 Phase : ZB-MR2 Signal #2 Phase: ZB-MR1
 Signal #1 Info : 30M x 0.32mm x0.2 Signal #2 Info : 30M x 0.32mm x0.5µm

Compound	RT#1	RT#2	Resp#1	Resp#2	ng/ml	ng/ml

System Monitoring Compounds						
1) SA Tetrachlo...	3.517	4.071	107.8E6	133.9E6	50.000	50.000
28) SA Decachlor...	8.289	9.182	85389644	114.9E6	50.000	50.000
Target Compounds						
23) Chlordane-1	4.396	5.075	28452764	50531174	500.000	500.000
24) Chlordane-2	4.900	5.545	27138790	54881597	500.000	500.000
25) Chlordane-3	5.471	6.195	70772768	196.0E6	500.000	500.000
26) Chlordane-4	5.530	6.271	59027339	237.6E6	500.000	500.000
27) Chlordane-5	6.367	7.079	28059559	43294366	500.000	500.000

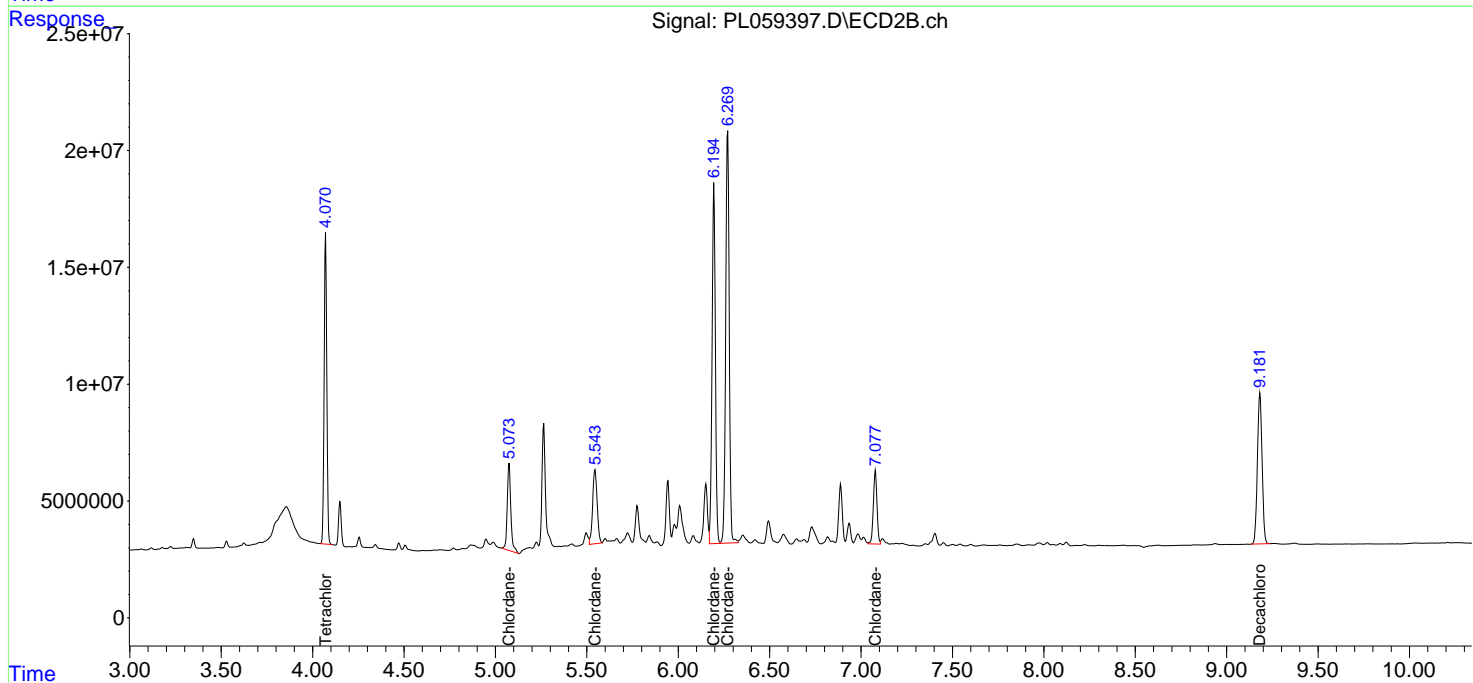
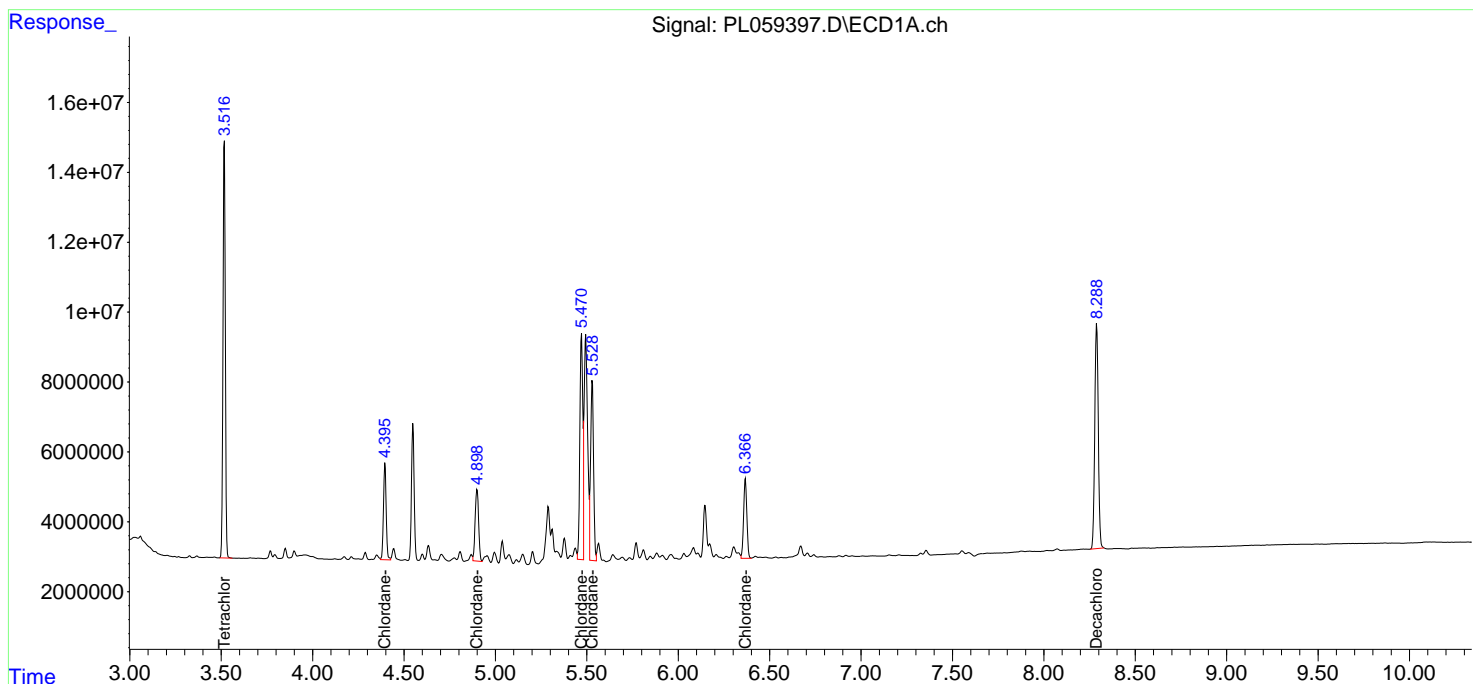
(f)=RT Delta > 1/2 Window (#)=Amounts differ by > 25% (m)=manual int.

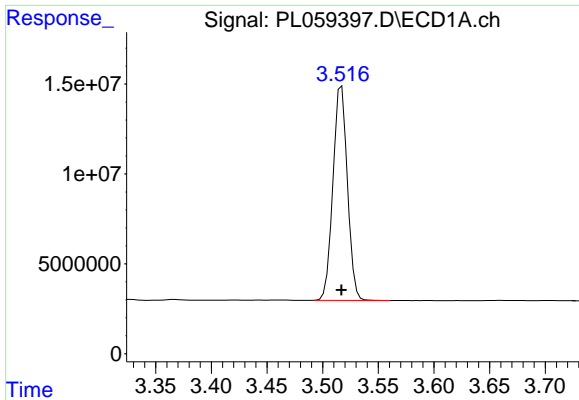
Data Path : Z:\pestpcbsrv\HPCHEM1\ECD_L\Data\PL062220\
 Data File : PL059397.D
 Signal(s) : Signal #1: ECD1A.ch Signal #2: ECD2B.ch
 Acq On : 22 Jun 2020 13:04
 Operator : AJ\MA
 Sample : PCHLORICC500
 Misc :
 ALS Vial : 10 Sample Multiplier: 1

Instrument :
 ECD_L
 ClientSampleID :
 PCHLORICC500

Integration File signal 1: autoint1.e
 Integration File signal 2: autoint2.e
 Quant Time: Jun 22 14:06:53 2020
 Quant Method : Z:\pestpcbsrv\HPCHEM1\ECD_L\methods\PL062220.M
 Quant Title : GC Extractables
 QLast Update : Mon Jun 22 14:06:31 2020
 Response via : Initial Calibration
 Integrator: ChemStation

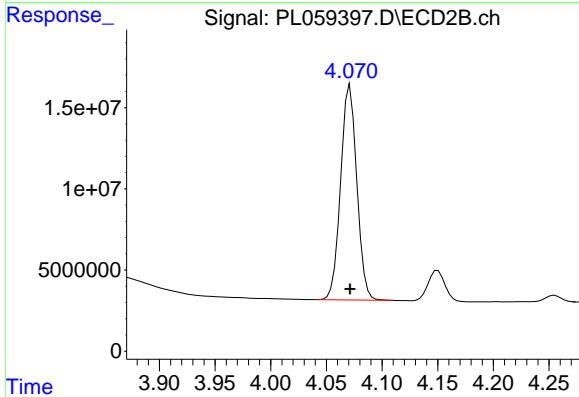
Volume Inj. : 1 µl
 Signal #1 Phase : ZB-MR2 Signal #2 Phase: ZB-MR1
 Signal #1 Info : 30M x 0.32mm x0.2 Signal #2 Info : 30M x 0.32mm x0.5µm



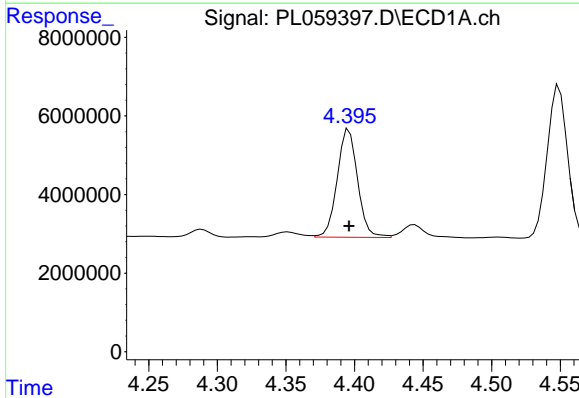


#1 Tetrachloro-m-xylene
 R.T.: 3.517 min
 Delta R.T.: 0.000 min
 Response: 107819739
 Conc: 50.00 ng/ml

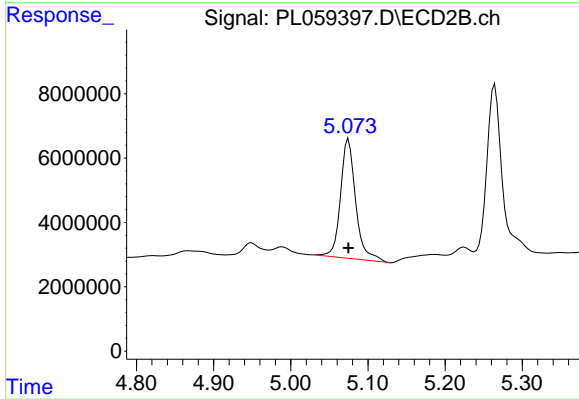
Instrument :
 ECD_L
 ClientSampleId :
 PCHLORICC500



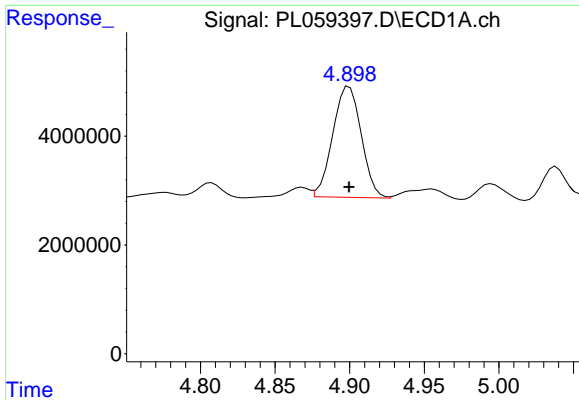
#1 Tetrachloro-m-xylene
 R.T.: 4.071 min
 Delta R.T.: 0.000 min
 Response: 133854790
 Conc: 50.00 ng/ml



#23 Chlordane-1
 R.T.: 4.396 min
 Delta R.T.: 0.000 min
 Response: 28452764
 Conc: 500.00 ng/ml



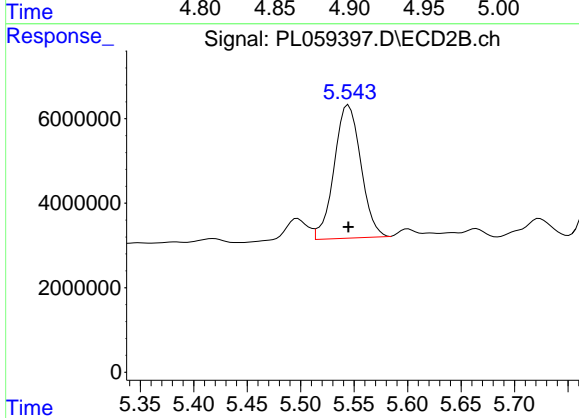
#23 Chlordane-1
 R.T.: 5.075 min
 Delta R.T.: 0.000 min
 Response: 50531174
 Conc: 500.00 ng/ml



#24 Chlordane-2

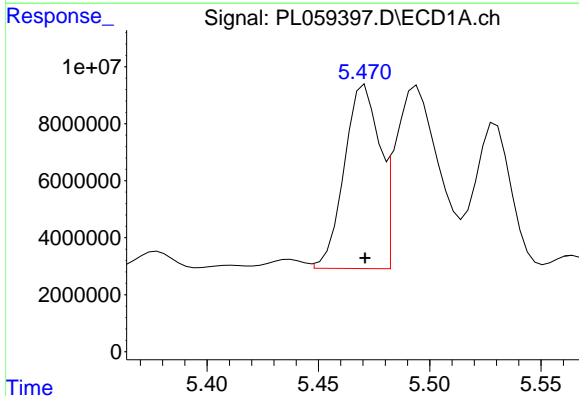
R.T.: 4.900 min
 Delta R.T.: 0.000 min
 Response: 27138790
 Conc: 500.00 ng/ml

Instrument :
 ECD_L
ClientSampled :
 PCHLORICC500



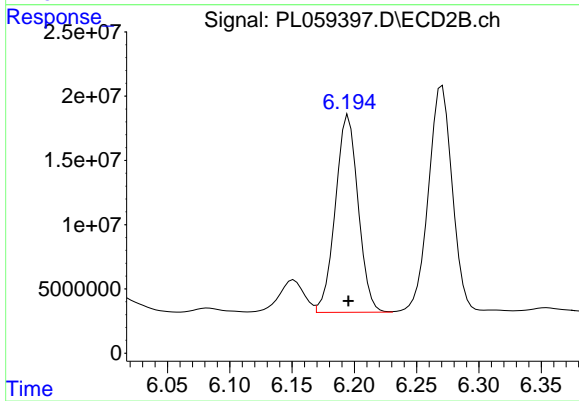
#24 Chlordane-2

R.T.: 5.545 min
 Delta R.T.: 0.000 min
 Response: 54881597
 Conc: 500.00 ng/ml



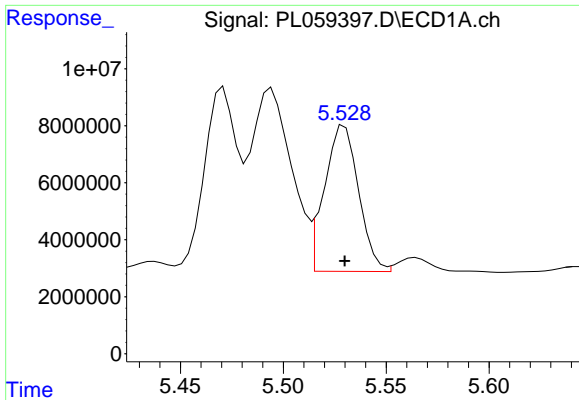
#25 Chlordane-3

R.T.: 5.471 min
 Delta R.T.: 0.000 min
 Response: 70772768
 Conc: 500.00 ng/ml



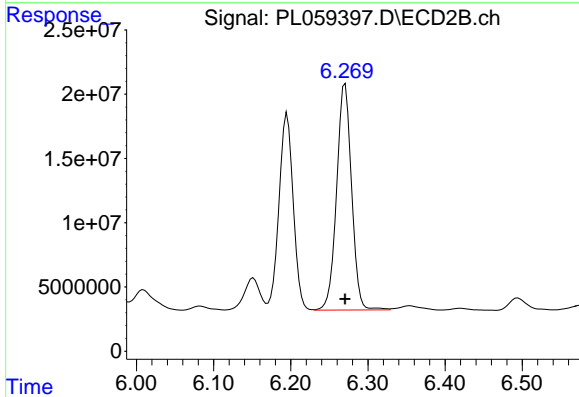
#25 Chlordane-3

R.T.: 6.195 min
 Delta R.T.: 0.000 min
 Response: 196042350
 Conc: 500.00 ng/ml

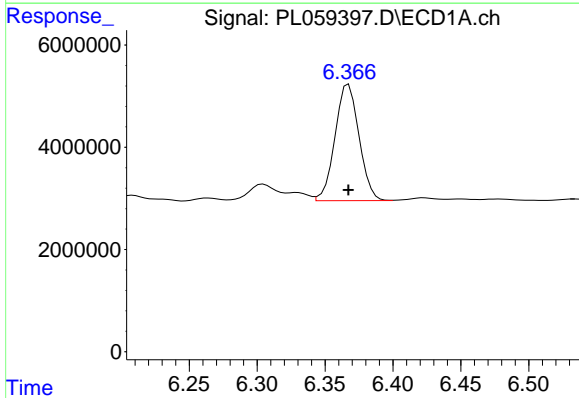


#26 Chlordane-4
 R.T.: 5.530 min
 Delta R.T.: 0.000 min
 Response: 59027339
 Conc: 500.00 ng/ml

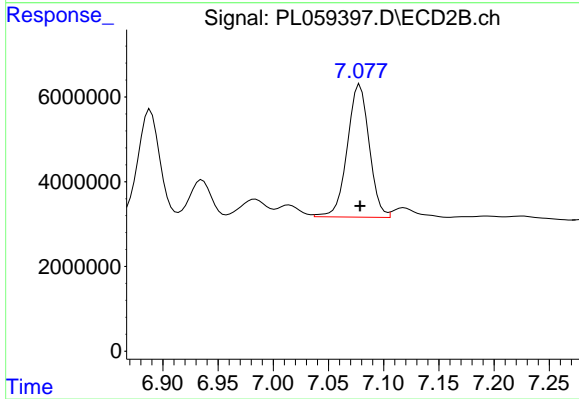
Instrument :
 ECD_L
 ClientSampleId :
 PCHLORICC500



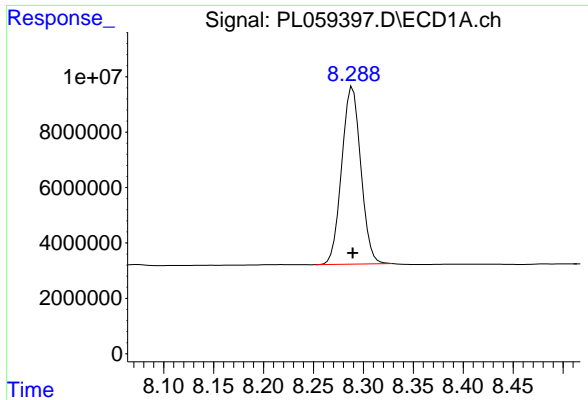
#26 Chlordane-4
 R.T.: 6.271 min
 Delta R.T.: 0.000 min
 Response: 237571411
 Conc: 500.00 ng/ml



#27 Chlordane-5
 R.T.: 6.367 min
 Delta R.T.: 0.000 min
 Response: 28059559
 Conc: 500.00 ng/ml



#27 Chlordane-5
 R.T.: 7.079 min
 Delta R.T.: 0.000 min
 Response: 43294366
 Conc: 500.00 ng/ml



#28 Decachlorobiphenyl

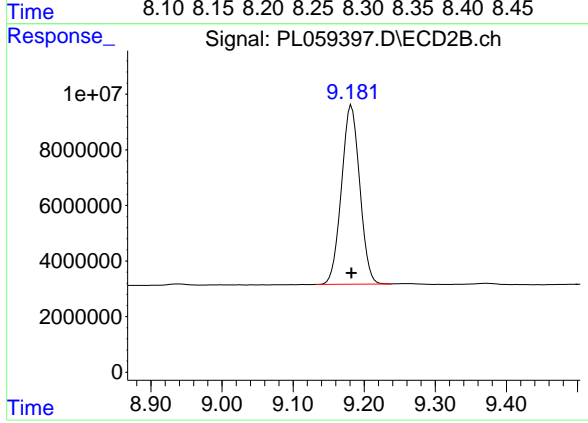
R.T.: 8.289 min

Delta R.T.: 0.000 min

Response: 85389644

Conc: 50.00 ng/ml

Instrument :
ECD_L
ClientSampleId :
PCHLORICC500



#28 Decachlorobiphenyl

R.T.: 9.182 min

Delta R.T.: 0.000 min

Response: 114856487

Conc: 50.00 ng/ml