

Data Path : Z:\pestpcbsrv\HPCHEM1\ECD\_L\Data\PL062220\  
 Data File : PL059405.D  
 Signal(s) : Signal #1: ECD1A.ch Signal #2: ECD2B.ch  
 Acq On : 22 Jun 2020 14:57  
 Operator : AJ\MA  
 Sample : PB129673BL  
 Misc :  
 ALS Vial : 7 Sample Multiplier: 1

Instrument :  
 ECD\_L  
 ClientSampleId :  
 PB129673BL

Integration File signal 1: autoint1.e  
 Integration File signal 2: autoint2.e  
 Quant Time: Jun 23 04:02:09 2020  
 Quant Method : Z:\pestpcbsrv\HPCHEM1\ECD\_L\methods\PL062220.M  
 Quant Title : GC Extractables  
 QLast Update : Mon Jun 22 14:09:48 2020  
 Response via : Initial Calibration  
 Integrator: ChemStation

Volume Inj. : 1 µl  
 Signal #1 Phase : ZB-MR2 Signal #2 Phase: ZB-MR1  
 Signal #1 Info : 30M x 0.32mm x0.2 Signal #2 Info : 30M x 0.32mm x0.5µm

Compound	RT#1	RT#2	Resp#1	Resp#2	ng/ml	ng/ml
-----						
System Monitoring Compounds						
1) SA Tetrachlo...	3.517	4.071	35320554	51398765	19.654	19.914
28) SA Decachlor...	8.288	9.182	34967000	47695213	20.535	20.831

Target Compounds

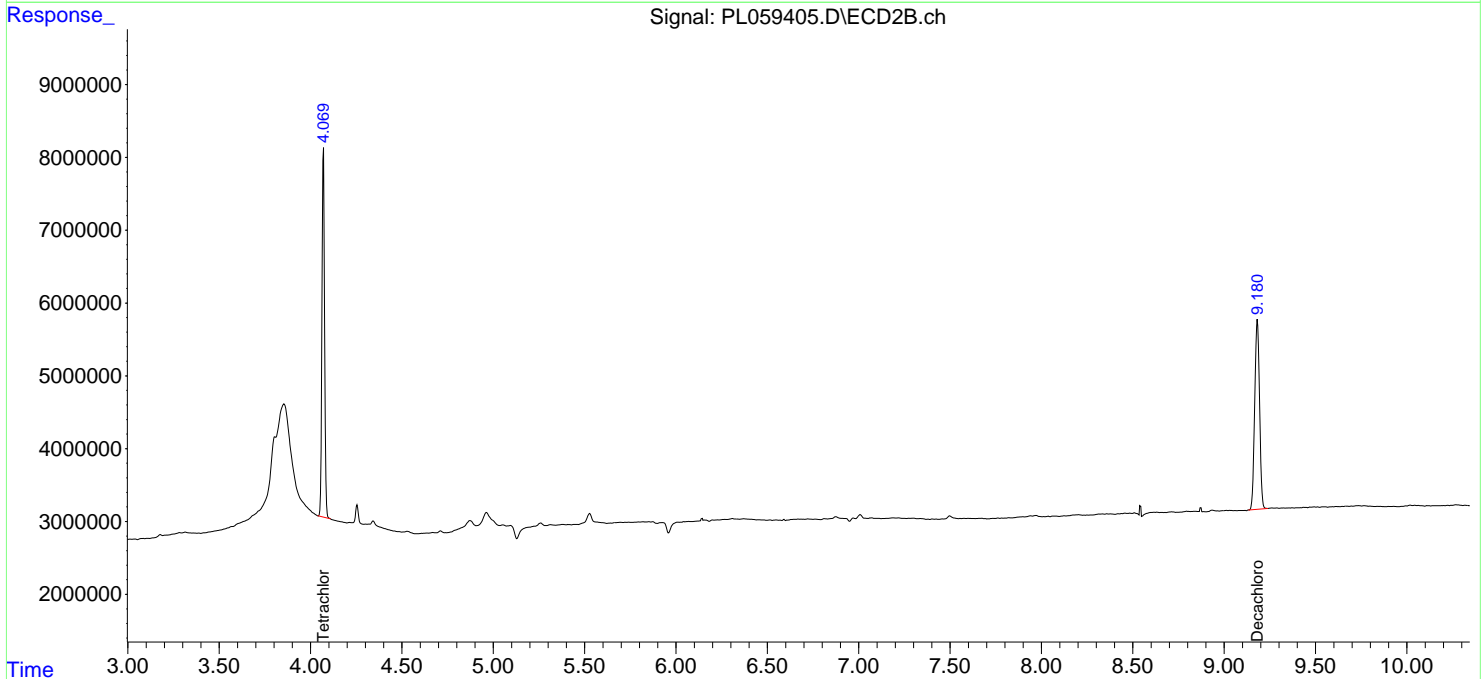
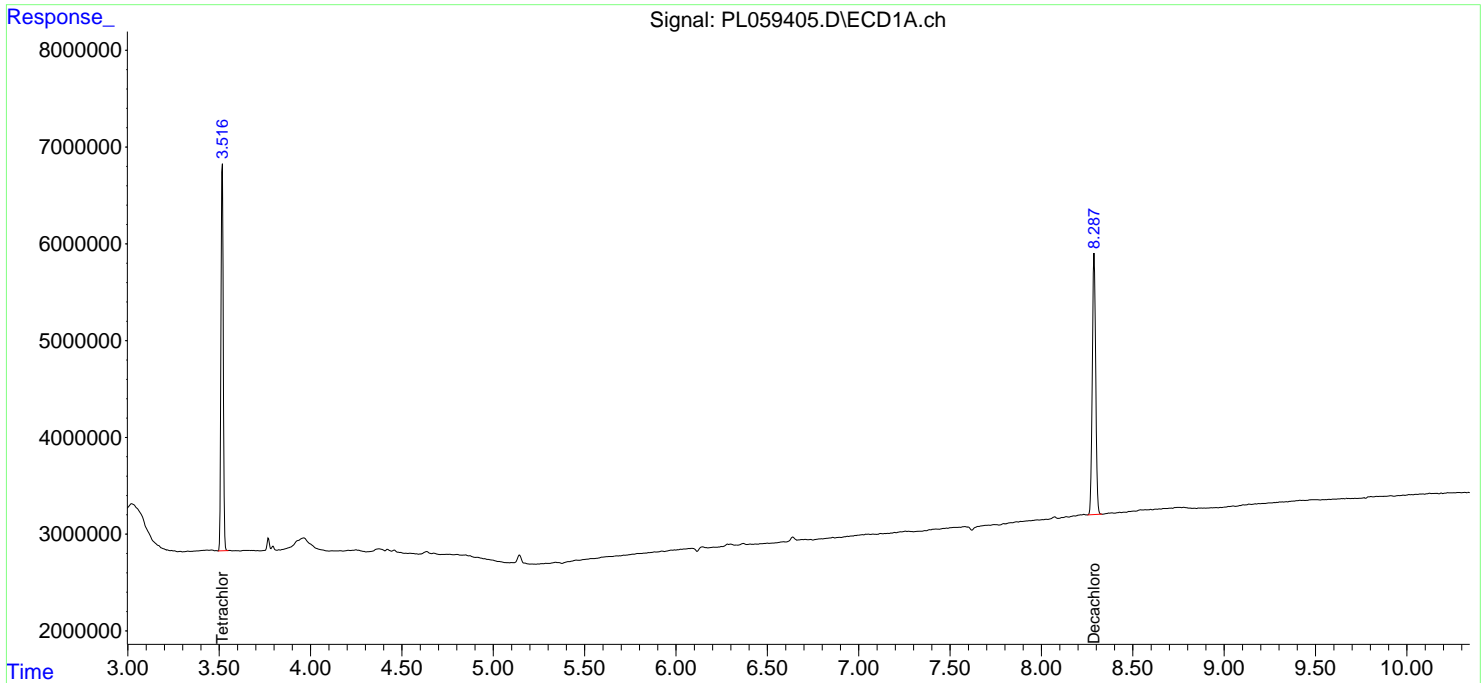
-----  
 (f)=RT Delta > 1/2 Window (#)=Amounts differ by > 25% (m)=manual int.

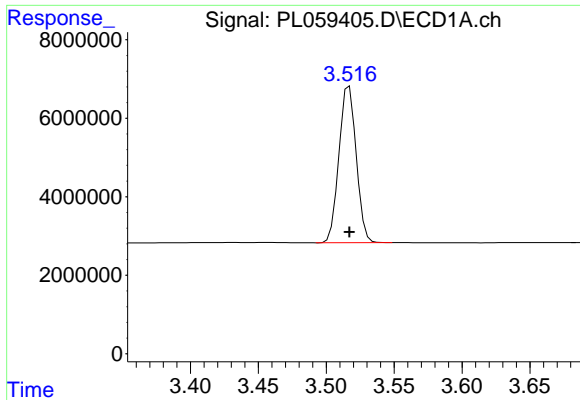
Data Path : Z:\pestpcbsrv\HPCHEM1\ECD\_L\Data\PL062220\  
 Data File : PL059405.D  
 Signal(s) : Signal #1: ECD1A.ch Signal #2: ECD2B.ch  
 Acq On : 22 Jun 2020 14:57  
 Operator : AJ\MA  
 Sample : PB129673BL  
 Misc :  
 ALS Vial : 7 Sample Multiplier: 1

**Instrument :**  
 ECD\_L  
**ClientSampled :**  
 PB129673BL

Integration File signal 1: autoint1.e  
 Integration File signal 2: autoint2.e  
 Quant Time: Jun 23 04:02:09 2020  
 Quant Method : Z:\pestpcbsrv\HPCHEM1\ECD\_L\methods\PL062220.M  
 Quant Title : GC Extractables  
 QLast Update : Mon Jun 22 14:09:48 2020  
 Response via : Initial Calibration  
 Integrator: ChemStation

Volume Inj. : 1 µl  
 Signal #1 Phase : ZB-MR2 Signal #2 Phase: ZB-MR1  
 Signal #1 Info : 30M x 0.32mm x0.2 Signal #2 Info : 30M x 0.32mm x0.5µm

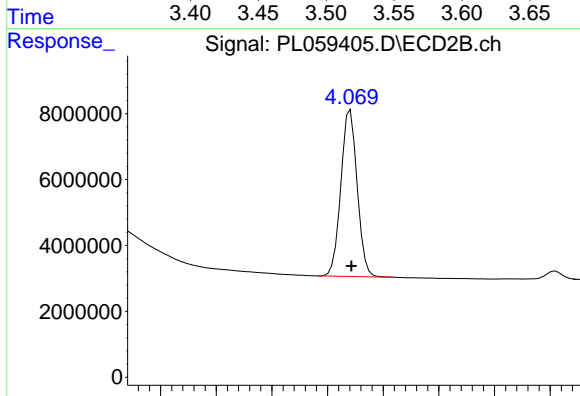




#1 Tetrachloro-m-xylene

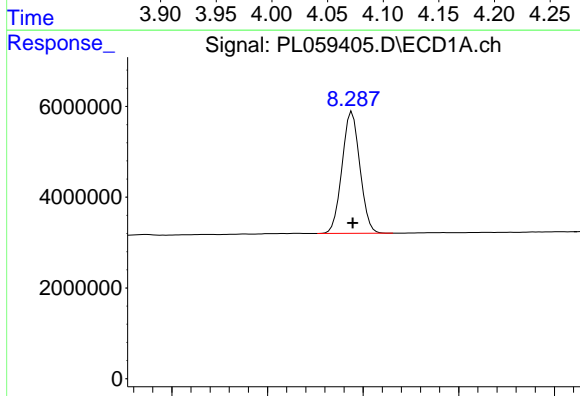
R.T.: 3.517 min  
Delta R.T.: 0.000 min  
Response: 35320554  
Conc: 19.65 ng/ml

Instrument :  
ECD\_L  
ClientSampleId :  
PB129673BL



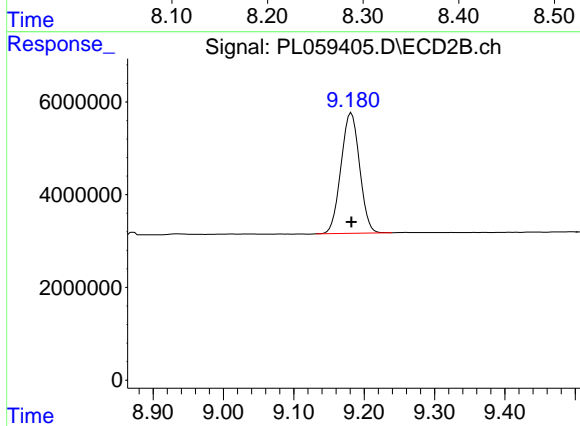
#1 Tetrachloro-m-xylene

R.T.: 4.071 min  
Delta R.T.: 0.000 min  
Response: 51398765  
Conc: 19.91 ng/ml



#28 Decachlorobiphenyl

R.T.: 8.288 min  
Delta R.T.: 0.000 min  
Response: 34967000  
Conc: 20.53 ng/ml



#28 Decachlorobiphenyl

R.T.: 9.182 min  
Delta R.T.: 0.000 min  
Response: 47695213  
Conc: 20.83 ng/ml