

Data Path : Z:\pestpcbsrv\HPCHEM1\ECD_L\Data\PL062220\
 Data File : PL059406.D
 Signal(s) : Signal #1: ECD1A.ch Signal #2: ECD2B.ch
 Acq On : 22 Jun 2020 15:11
 Operator : AJ\MA
 Sample : PB129673BS
 Misc :
 ALS Vial : 8 Sample Multiplier: 1

Instrument :
 ECD_L
 ClientSampleId :
 PB129673BS

Integration File signal 1: autoint1.e
 Integration File signal 2: autoint2.e
 Quant Time: Jun 23 04:02:21 2020
 Quant Method : Z:\pestpcbsrv\HPCHEM1\ECD_L\methods\PL062220.M
 Quant Title : GC Extractables
 QLast Update : Mon Jun 22 14:09:48 2020
 Response via : Initial Calibration
 Integrator: ChemStation

Volume Inj. : 1 µl
 Signal #1 Phase : ZB-MR2 Signal #2 Phase: ZB-MR1
 Signal #1 Info : 30M x 0.32mm x0.2 Signal #2 Info : 30M x 0.32mm x0.5µm

	Compound	RT#1	RT#2	Resp#1	Resp#2	ng/ml	ng/ml

System Monitoring Compounds							
1)	SA Tetrachlo...	3.517	4.071	35386963	52002147	19.691	20.148
28)	SA Decachlor...	8.289	9.182	35276423	48360245	20.716	21.122
Target Compounds							
2)	A alpha-BHC	3.959	4.463	128.3E6	170.7E6	49.722	50.096
3)	MA gamma-BHC...	4.244	4.751	113.8E6	158.9E6	49.919	50.758
4)	MA Heptachlor	4.549	5.265	106.8E6	164.3E6	50.081	50.720
5)	MB Aldrin	4.799	5.573	90402850	154.3E6	50.803	50.099
6)	B beta-BHC	4.493	4.919	46672631	69820689	49.010	51.337
7)	B delta-BHC	4.700	5.139	100.6E6	145.6E6	49.305	52.335
8)	B Heptachlo...	5.243	5.961	76055574	137.7E6	50.596	54.873
9)	A Endosulfan I	5.583	6.320	73944388	137.0E6	50.262	50.467
10)	B gamma-Chl...	5.471	6.196	76876742	147.0E6	50.124	50.194
11)	B alpha-Chl...	5.529	6.269	77860734	148.6E6	50.102	50.476
12)	B 4,4'-DDE	5.693	6.424	73653821	137.6E6	50.689	50.956
13)	MA Dieldrin	5.827	6.578	79980967	142.8E6	50.699	50.740
14)	MA Endrin	6.085	6.797	76969443	124.3E6	50.658	50.329
15)	B Endosulfa...	6.358	7.005	77789737	126.8E6	50.374	49.999
16)	A 4,4'-DDD	6.209	6.915	66682774	113.8E6	51.099	51.142
17)	MA 4,4'-DDT	6.451	7.215	68839158	115.2E6	52.208	50.693
18)	B Endrin al...	6.526	7.129	66545915	110.3E6	50.350	50.293
19)	B Endosulfa...	6.738	7.353	76733652	121.2E6	50.540	50.073
20)	A Methoxychlor	6.996	7.672	41575245	66125040	51.300	49.813
21)	B Endrin ke...	7.231	7.826	89132561	130.4E6	51.121	50.467
22)	Mirex	7.424	8.284	70829499	99250438	50.159	50.249

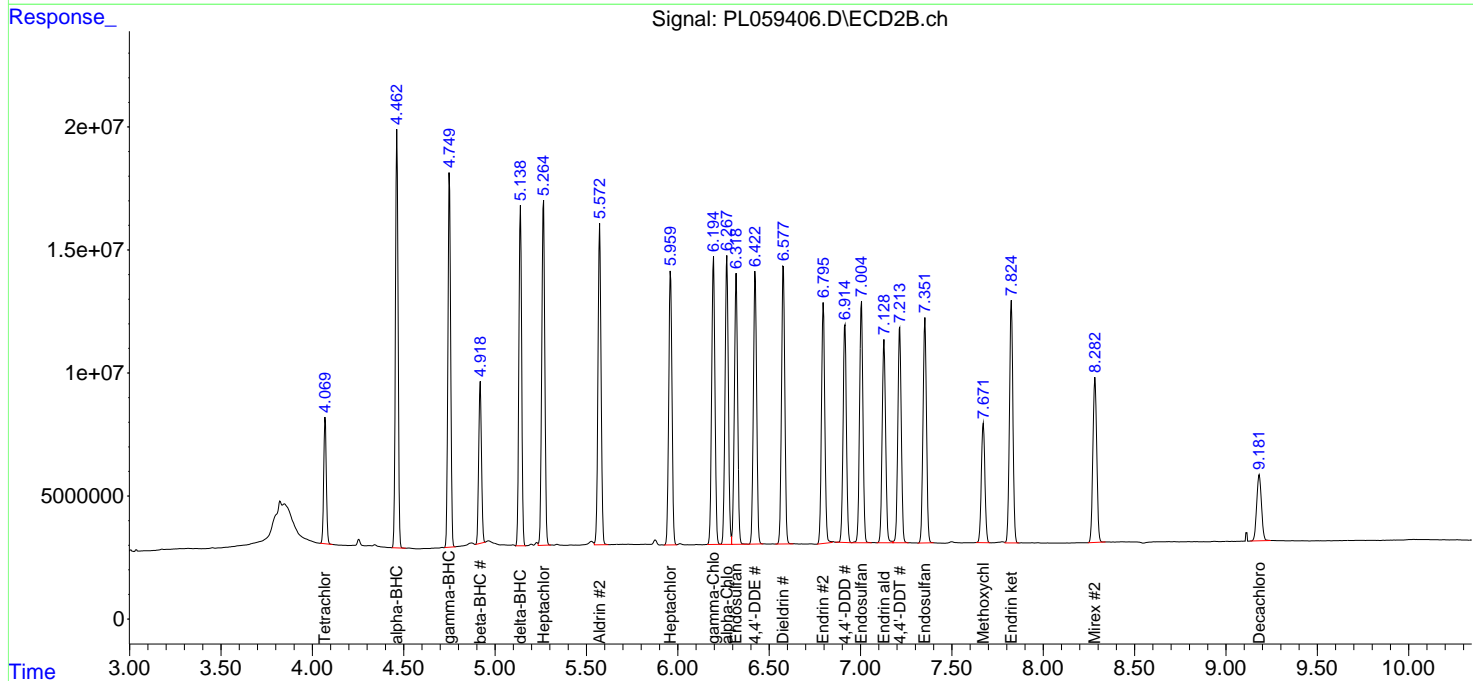
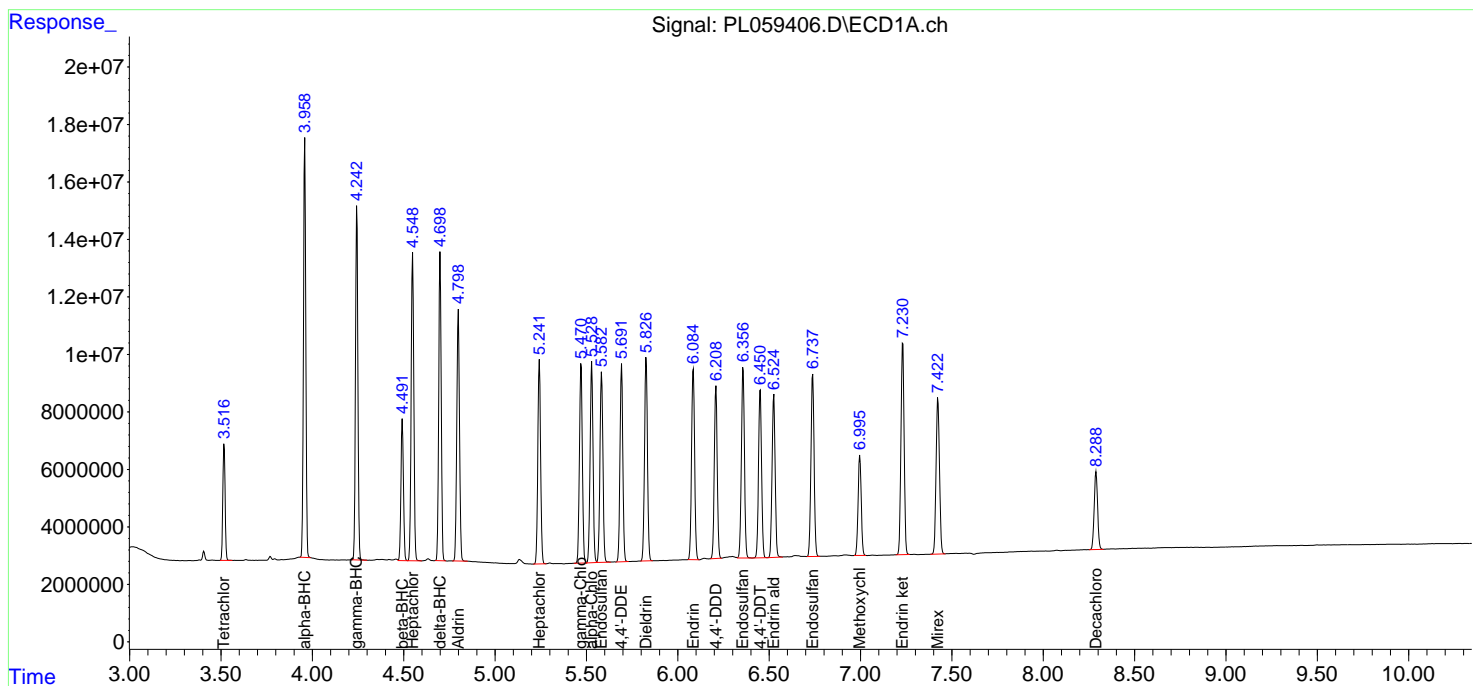
(f)=RT Delta > 1/2 Window (#)=Amounts differ by > 25% (m)=manual int.

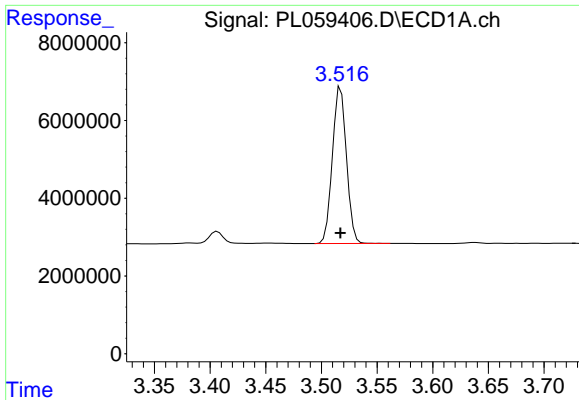
Data Path : Z:\pestpcbsrv\HPCHEM1\ECD_L\Data\PL062220\
 Data File : PL059406.D
 Signal(s) : Signal #1: ECD1A.ch Signal #2: ECD2B.ch
 Acq On : 22 Jun 2020 15:11
 Operator : AJ\MA
 Sample : PB129673BS
 Misc :
 ALS Vial : 8 Sample Multiplier: 1

Instrument :
 ECD_L
 Client Sampled :
 PB129673BS

Integration File signal 1: autoint1.e
 Integration File signal 2: autoint2.e
 Quant Time: Jun 23 04:02:21 2020
 Quant Method : Z:\pestpcbsrv\HPCHEM1\ECD_L\methods\PL062220.M
 Quant Title : GC Extractables
 QLast Update : Mon Jun 22 14:09:48 2020
 Response via : Initial Calibration
 Integrator: ChemStation

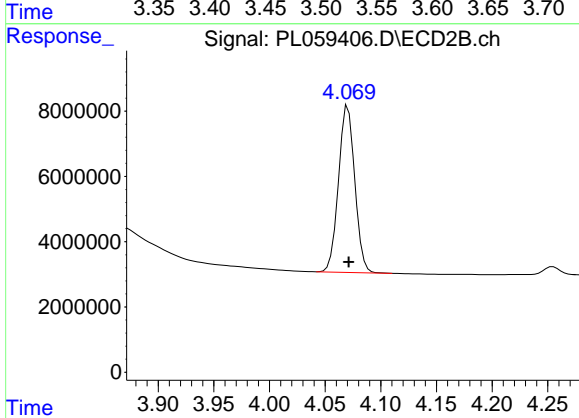
Volume Inj. : 1 µl
 Signal #1 Phase : ZB-MR2 Signal #2 Phase: ZB-MR1
 Signal #1 Info : 30M x 0.32mm x0.2 Signal #2 Info : 30M x 0.32mm x0.5µm



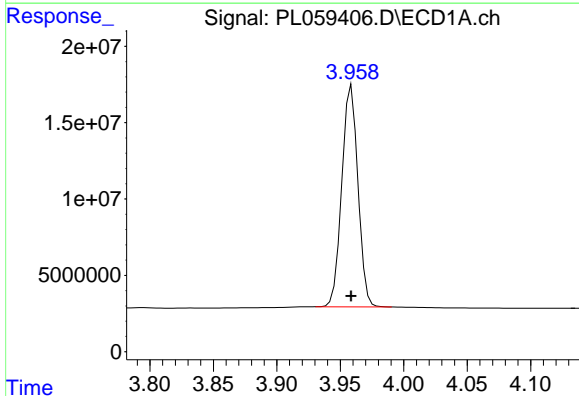


#1 Tetrachloro-m-xylene
 R.T.: 3.517 min
 Delta R.T.: 0.000 min
 Response: 35386963
 Conc: 19.69 ng/ml

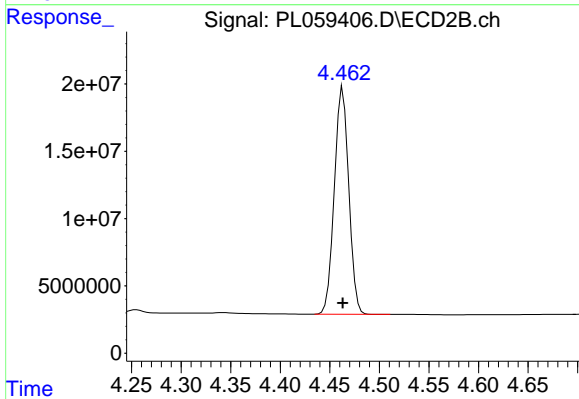
Instrument :
 ECD_L
 ClientSampled :
 PB129673BS



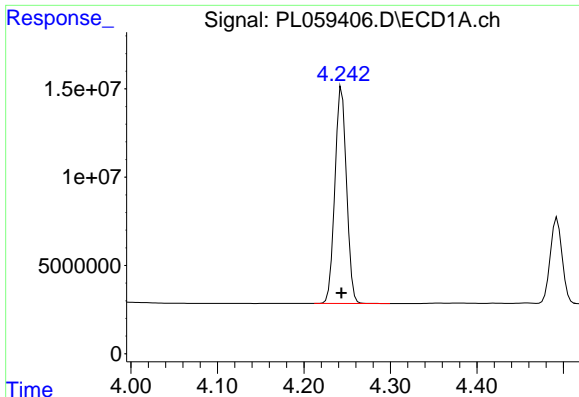
#1 Tetrachloro-m-xylene
 R.T.: 4.071 min
 Delta R.T.: 0.000 min
 Response: 52002147
 Conc: 20.15 ng/ml



#2 alpha-BHC
 R.T.: 3.959 min
 Delta R.T.: 0.000 min
 Response: 128336167
 Conc: 49.72 ng/ml

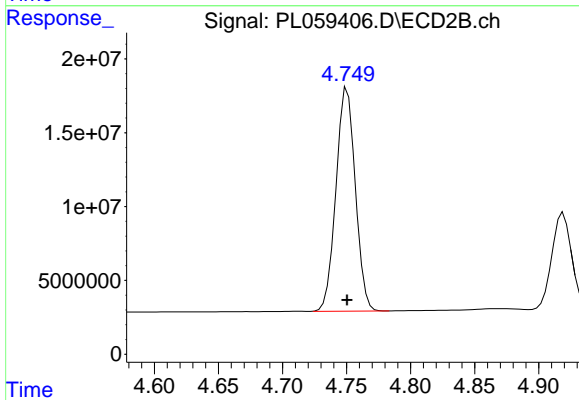


#2 alpha-BHC
 R.T.: 4.463 min
 Delta R.T.: 0.000 min
 Response: 170656215
 Conc: 50.10 ng/ml

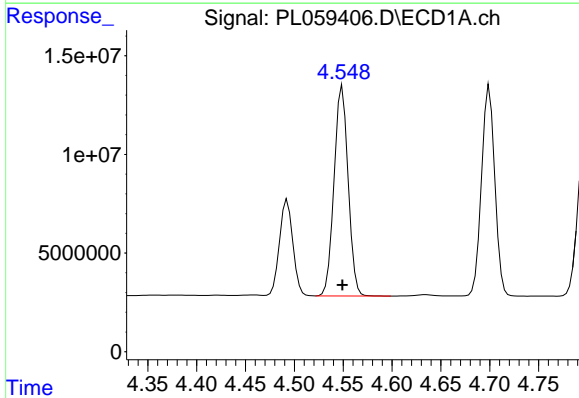


#3 gamma-BHC (Lindane)
 R.T.: 4.244 min
 Delta R.T.: 0.000 min
 Response: 113844980
 Conc: 49.92 ng/ml

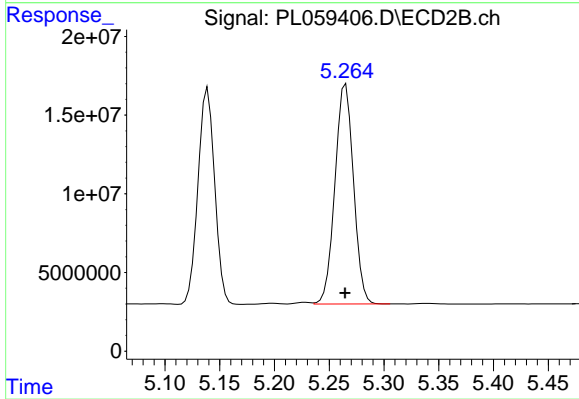
Instrument :
 ECD_L
 ClientSampled :
 PB129673BS



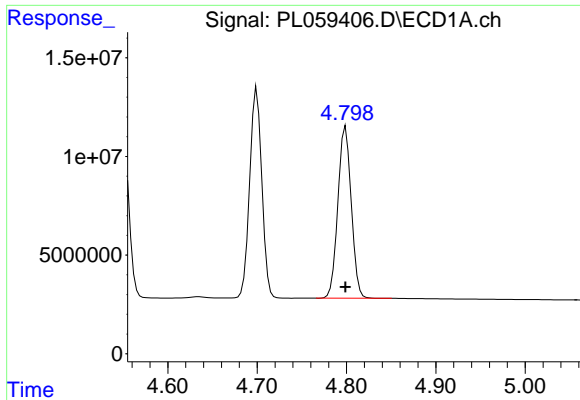
#3 gamma-BHC (Lindane)
 R.T.: 4.751 min
 Delta R.T.: 0.000 min
 Response: 158868348
 Conc: 50.76 ng/ml



#4 Heptachlor
 R.T.: 4.549 min
 Delta R.T.: 0.000 min
 Response: 106798899
 Conc: 50.08 ng/ml

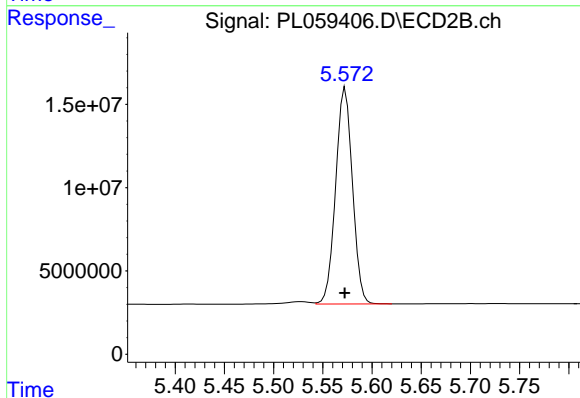


#4 Heptachlor
 R.T.: 5.265 min
 Delta R.T.: 0.000 min
 Response: 164274373
 Conc: 50.72 ng/ml

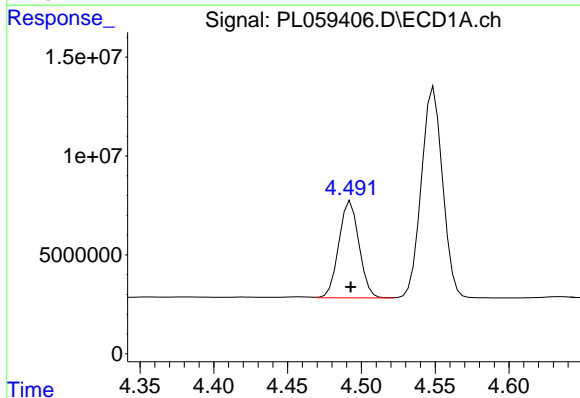


#5 Aldrin
 R.T.: 4.799 min
 Delta R.T.: 0.000 min
 Response: 90402850
 Conc: 50.80 ng/ml

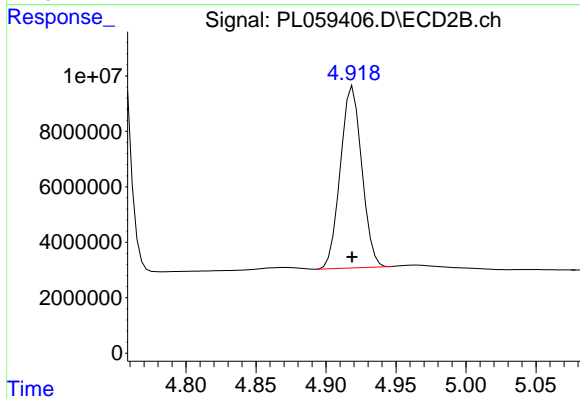
Instrument :
 ECD_L
 ClientSampleId :
 PB129673BS



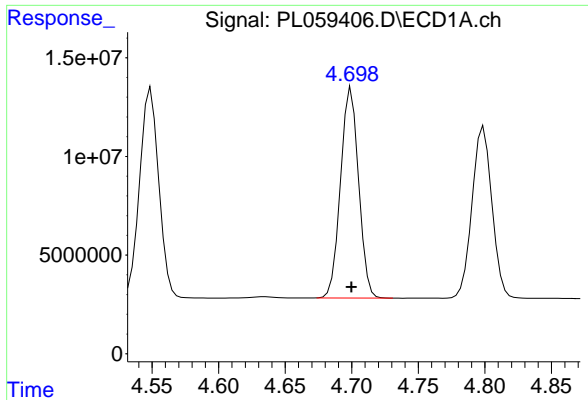
#5 Aldrin
 R.T.: 5.573 min
 Delta R.T.: 0.000 min
 Response: 154285197
 Conc: 50.10 ng/ml



#6 beta-BHC
 R.T.: 4.493 min
 Delta R.T.: 0.000 min
 Response: 46672631
 Conc: 49.01 ng/ml

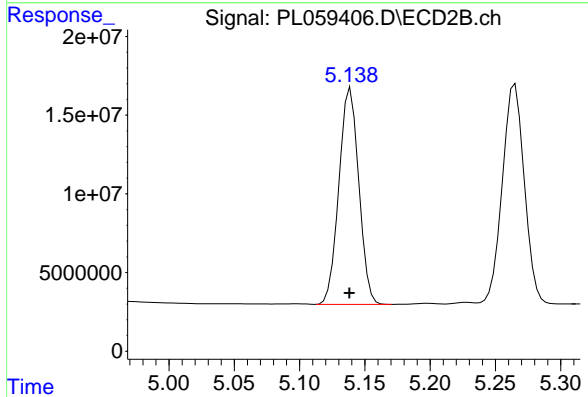


#6 beta-BHC
 R.T.: 4.919 min
 Delta R.T.: 0.000 min
 Response: 69820689
 Conc: 51.34 ng/ml

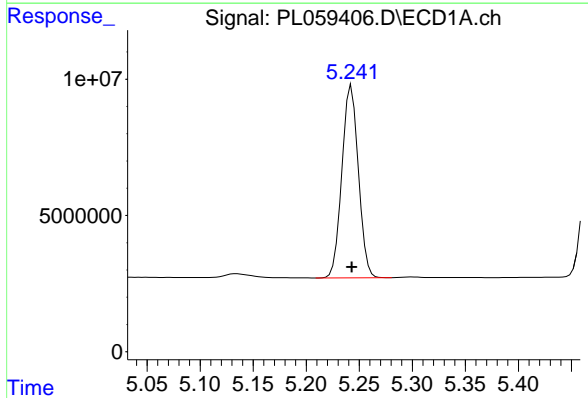


#7 delta-BHC
 R.T.: 4.700 min
 Delta R.T.: 0.000 min
 Response: 100565929
 Conc: 49.31 ng/ml

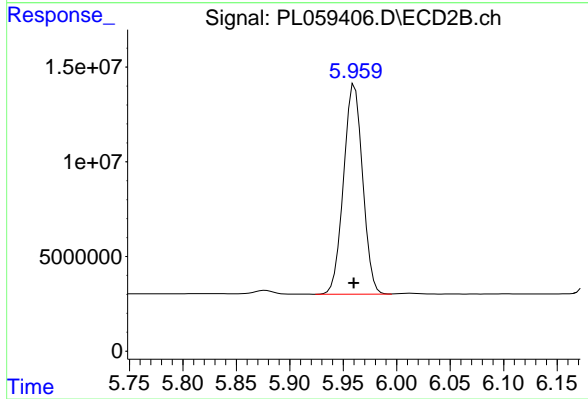
Instrument :
 ECD_L
 ClientSampleId :
 PB129673BS



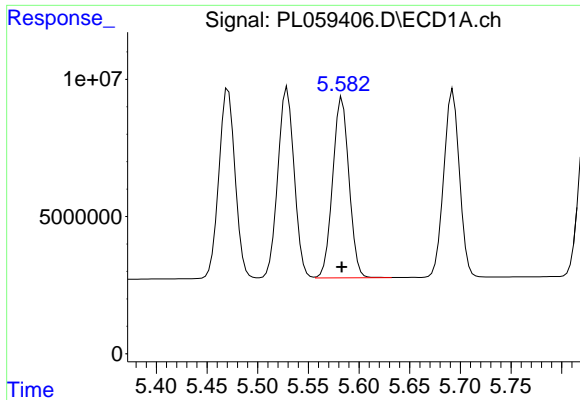
#7 delta-BHC
 R.T.: 5.139 min
 Delta R.T.: 0.000 min
 Response: 145611952
 Conc: 52.34 ng/ml



#8 Heptachlor epoxide
 R.T.: 5.243 min
 Delta R.T.: 0.000 min
 Response: 76055574
 Conc: 50.60 ng/ml

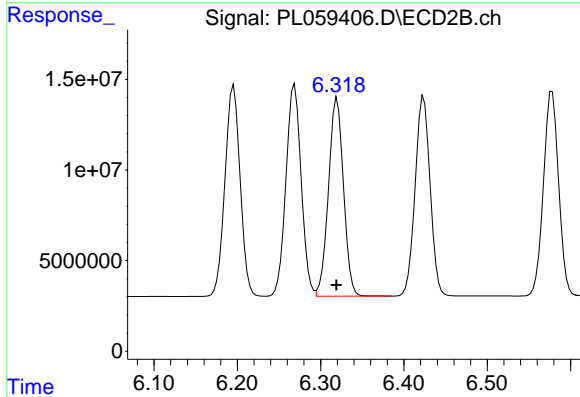


#8 Heptachlor epoxide
 R.T.: 5.961 min
 Delta R.T.: 0.000 min
 Response: 137716561
 Conc: 54.87 ng/ml

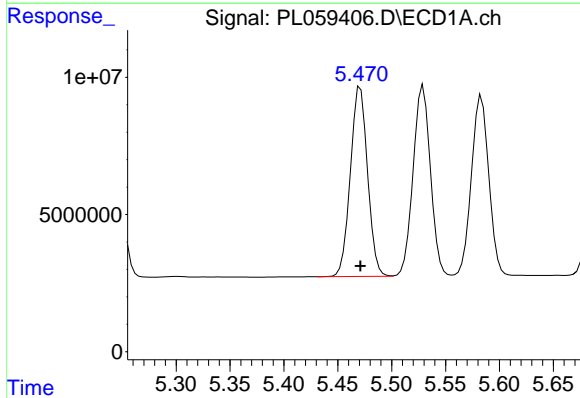


#9 Endosulfan I
 R.T.: 5.583 min
 Delta R.T.: 0.000 min
 Response: 73944388
 Conc: 50.26 ng/ml

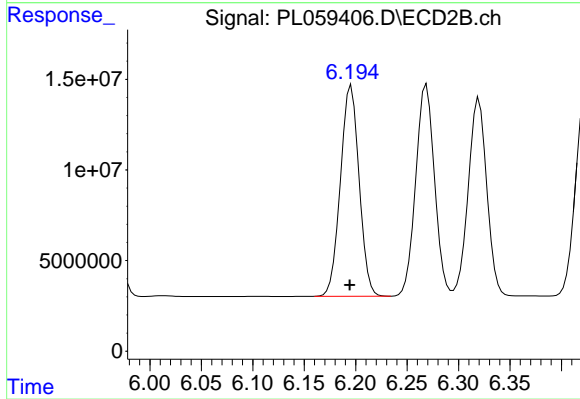
Instrument :
 ECD_L
 ClientSampled :
 PB129673BS



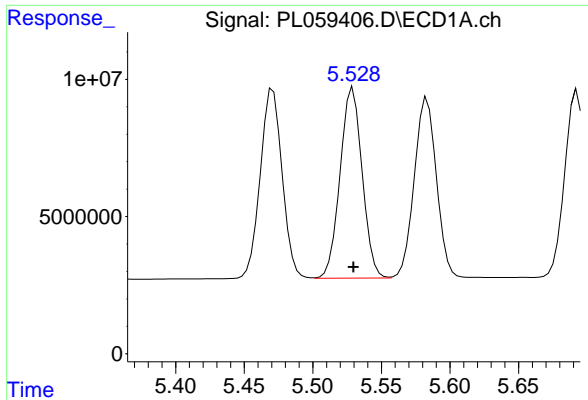
#9 Endosulfan I
 R.T.: 6.320 min
 Delta R.T.: 0.000 min
 Response: 136966277
 Conc: 50.47 ng/ml



#10 gamma-Chlordane
 R.T.: 5.471 min
 Delta R.T.: 0.000 min
 Response: 76876742
 Conc: 50.12 ng/ml

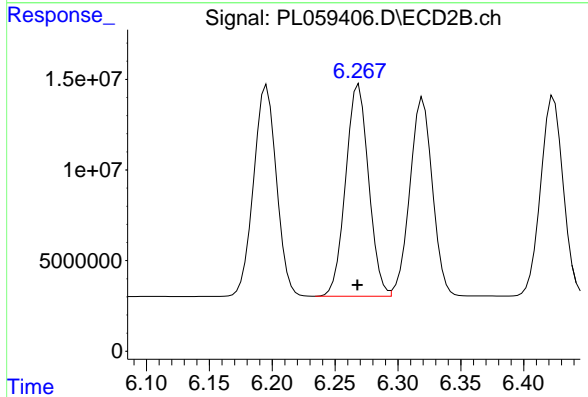


#10 gamma-Chlordane
 R.T.: 6.196 min
 Delta R.T.: 0.001 min
 Response: 147022860
 Conc: 50.19 ng/ml

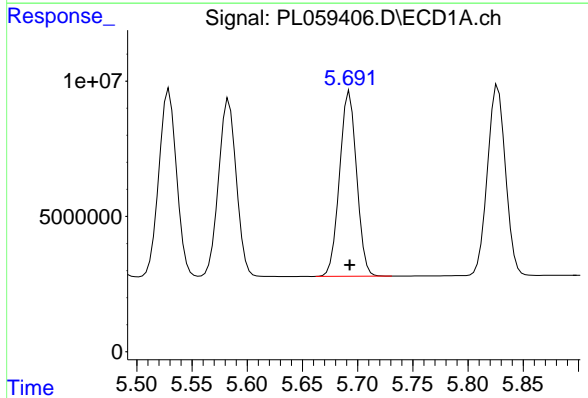


#11 alpha-Chlordane
R.T.: 5.529 min
Delta R.T.: 0.000 min
Response: 77860734
Conc: 50.10 ng/ml

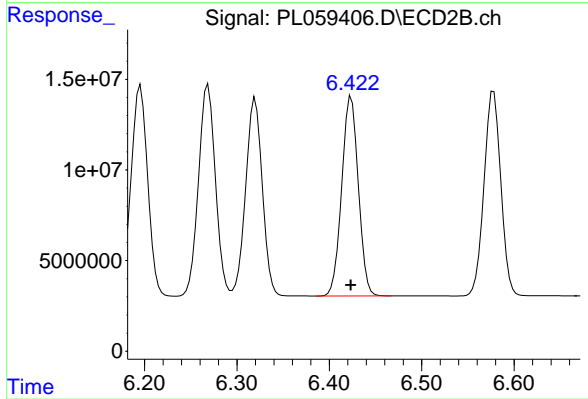
Instrument :
ECD_L
ClientSampled :
PB129673BS



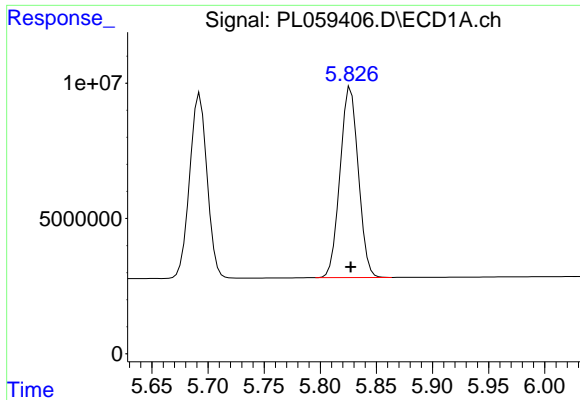
#11 alpha-Chlordane
R.T.: 6.269 min
Delta R.T.: 0.000 min
Response: 148640477
Conc: 50.48 ng/ml



#12 4,4'-DDE
R.T.: 5.693 min
Delta R.T.: 0.000 min
Response: 73653821
Conc: 50.69 ng/ml

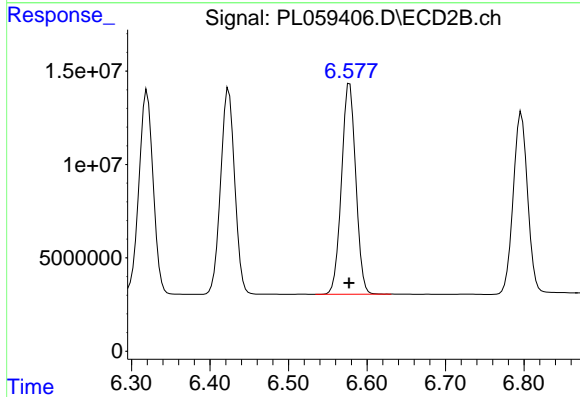


#12 4,4'-DDE
R.T.: 6.424 min
Delta R.T.: 0.000 min
Response: 137617631
Conc: 50.96 ng/ml

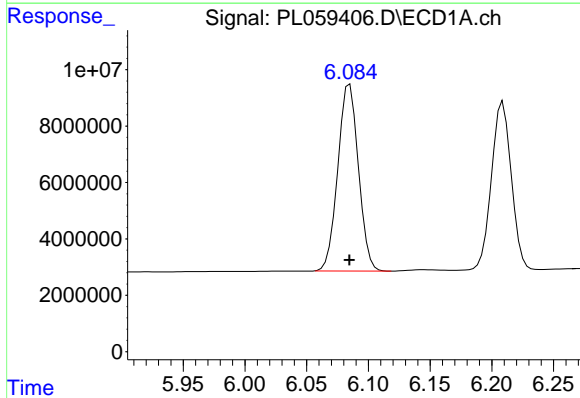


#13 Dieldrin
 R.T.: 5.827 min
 Delta R.T.: 0.000 min
 Response: 79980967
 Conc: 50.70 ng/ml

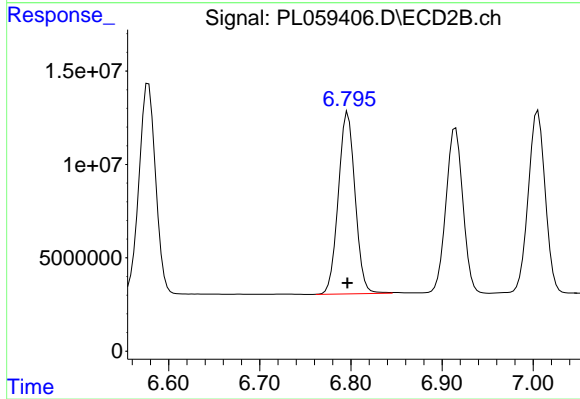
Instrument :
 ECD_L
 ClientSampled :
 PB129673BS



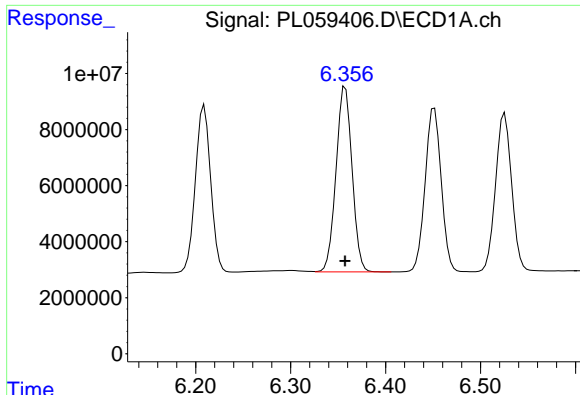
#13 Dieldrin
 R.T.: 6.578 min
 Delta R.T.: 0.000 min
 Response: 142844972
 Conc: 50.74 ng/ml



#14 Endrin
 R.T.: 6.085 min
 Delta R.T.: 0.000 min
 Response: 76969443
 Conc: 50.66 ng/ml



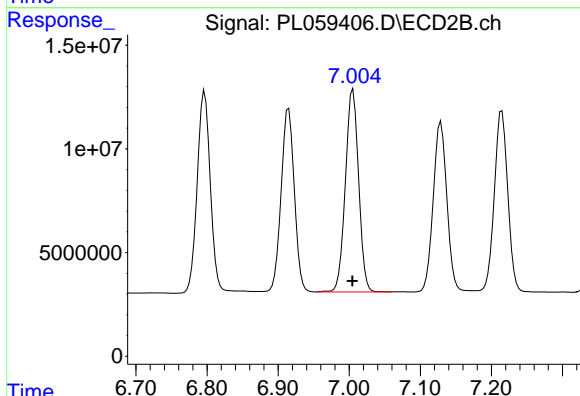
#14 Endrin
 R.T.: 6.797 min
 Delta R.T.: 0.000 min
 Response: 124324171
 Conc: 50.33 ng/ml



#15 Endosulfan II

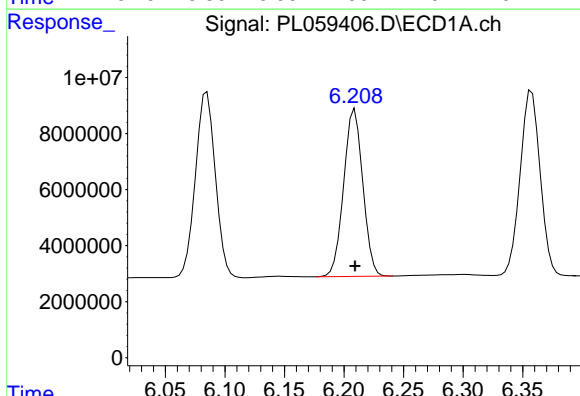
R.T.: 6.358 min
 Delta R.T.: 0.000 min
 Response: 77789737
 Conc: 50.37 ng/ml

Instrument :
 ECD_L
 ClientSampled :
 PB129673BS



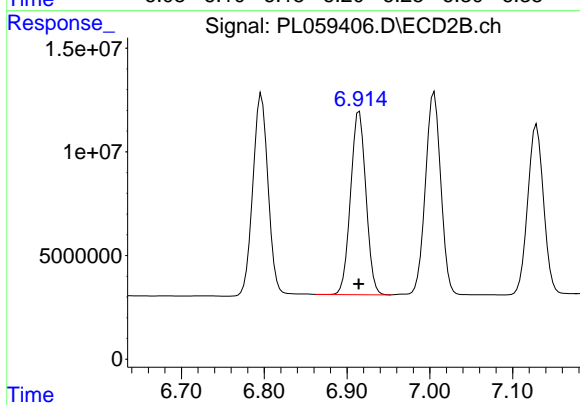
#15 Endosulfan II

R.T.: 7.005 min
 Delta R.T.: 0.000 min
 Response: 126790960
 Conc: 50.00 ng/ml



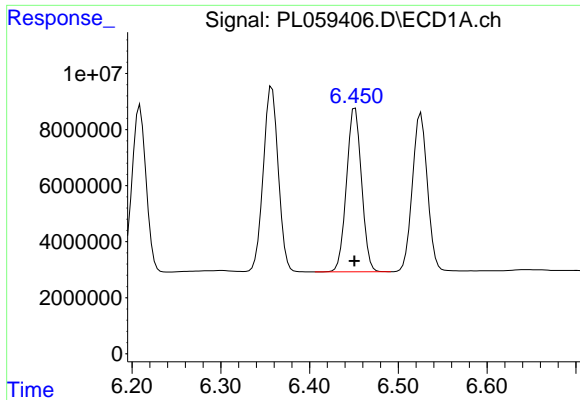
#16 4,4'-DDD

R.T.: 6.209 min
 Delta R.T.: 0.000 min
 Response: 66682774
 Conc: 51.10 ng/ml



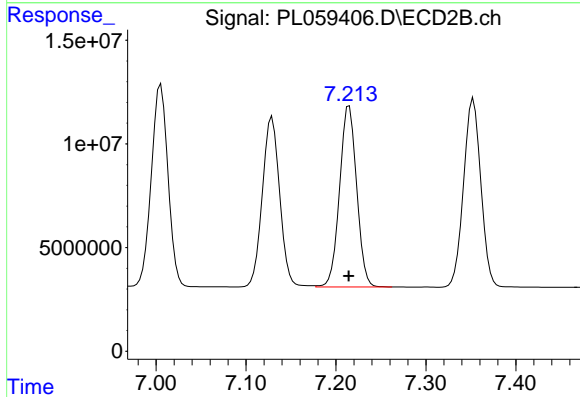
#16 4,4'-DDD

R.T.: 6.915 min
 Delta R.T.: 0.000 min
 Response: 113796183
 Conc: 51.14 ng/ml

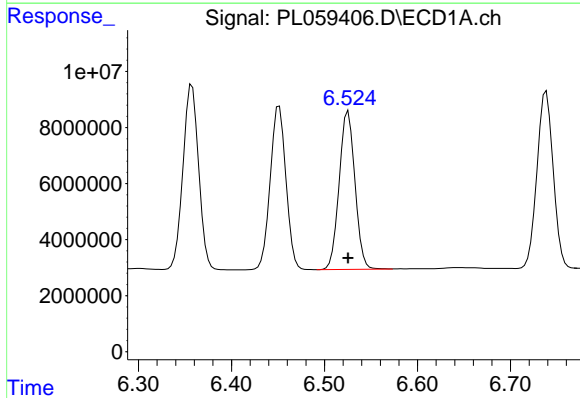


#17 4,4'-DDT
 R.T.: 6.451 min
 Delta R.T.: 0.000 min
 Response: 68839158
 Conc: 52.21 ng/ml

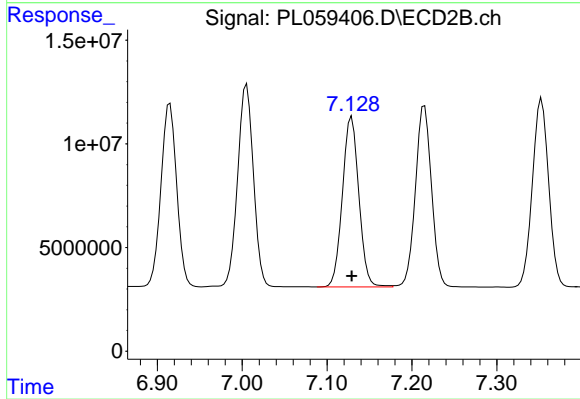
Instrument :
 ECD_L
 ClientSampleId :
 PB129673BS



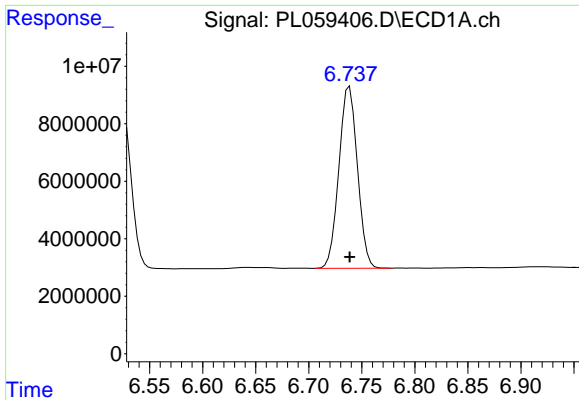
#17 4,4'-DDT
 R.T.: 7.215 min
 Delta R.T.: 0.000 min
 Response: 115227160
 Conc: 50.69 ng/ml



#18 Endrin aldehyde
 R.T.: 6.526 min
 Delta R.T.: 0.000 min
 Response: 66545915
 Conc: 50.35 ng/ml



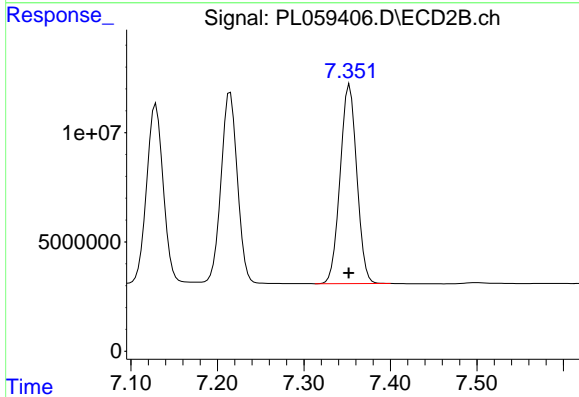
#18 Endrin aldehyde
 R.T.: 7.129 min
 Delta R.T.: 0.000 min
 Response: 110308661
 Conc: 50.29 ng/ml



#19 Endosulfan Sulfate

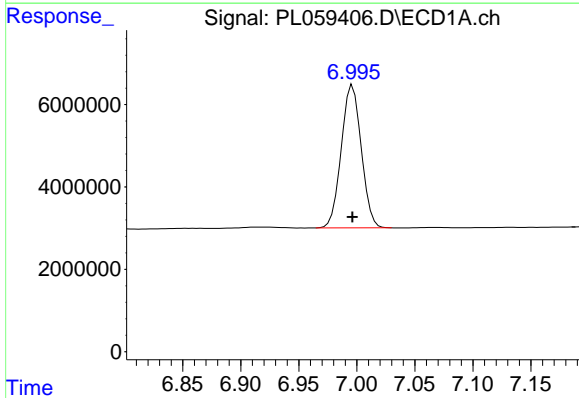
R.T.: 6.738 min
 Delta R.T.: 0.000 min
 Response: 76733652
 Conc: 50.54 ng/ml

Instrument :
 ECD_L
 ClientSampleId :
 PB129673BS



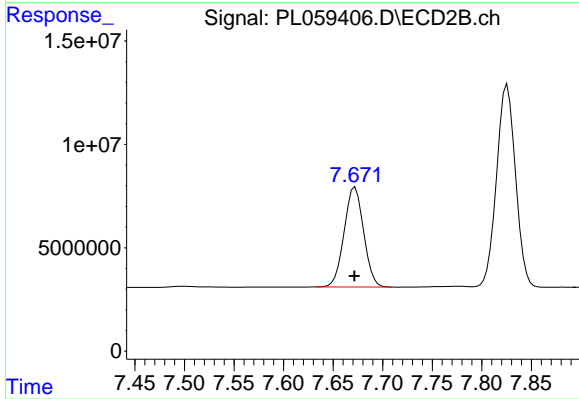
#19 Endosulfan Sulfate

R.T.: 7.353 min
 Delta R.T.: 0.000 min
 Response: 121195669
 Conc: 50.07 ng/ml



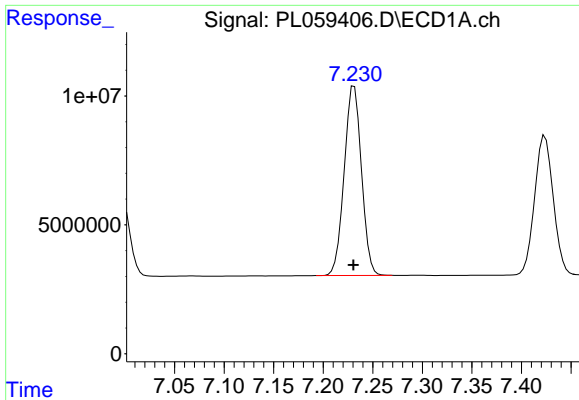
#20 Methoxychlor

R.T.: 6.996 min
 Delta R.T.: 0.000 min
 Response: 41575245
 Conc: 51.30 ng/ml



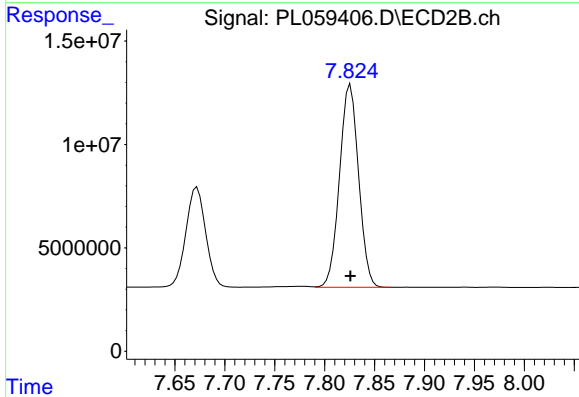
#20 Methoxychlor

R.T.: 7.672 min
 Delta R.T.: 0.000 min
 Response: 66125040
 Conc: 49.81 ng/ml

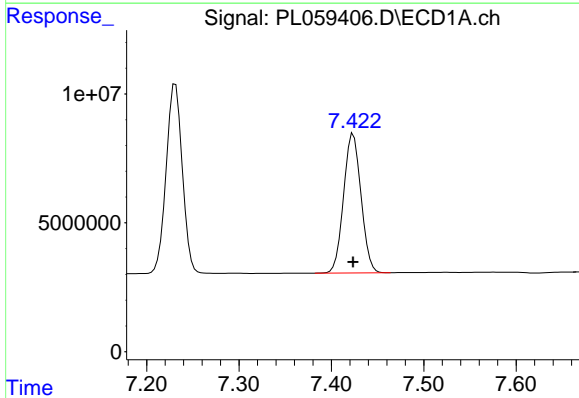


#21 Endrin ketone
 R.T.: 7.231 min
 Delta R.T.: 0.000 min
 Response: 89132561
 Conc: 51.12 ng/ml

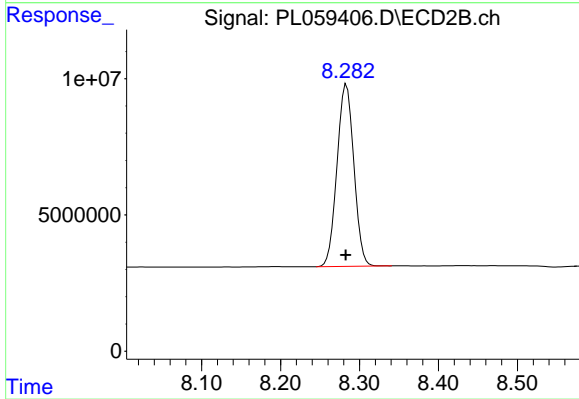
Instrument :
 ECD_L
ClientSampleId :
 PB129673BS



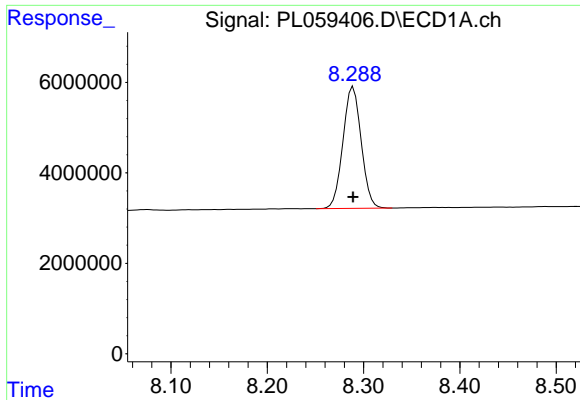
#21 Endrin ketone
 R.T.: 7.826 min
 Delta R.T.: 0.000 min
 Response: 130362726
 Conc: 50.47 ng/ml



#22 Mirex
 R.T.: 7.424 min
 Delta R.T.: 0.000 min
 Response: 70829499
 Conc: 50.16 ng/ml



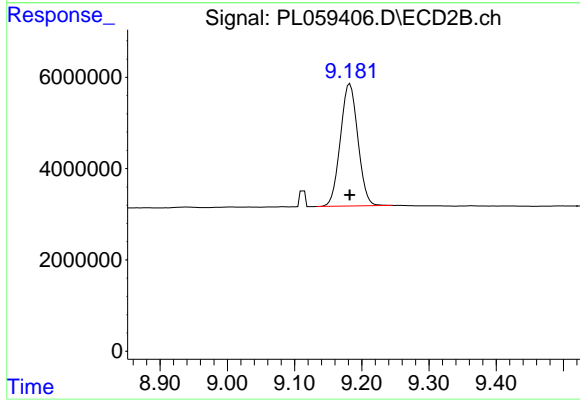
#22 Mirex
 R.T.: 8.284 min
 Delta R.T.: 0.000 min
 Response: 99250438
 Conc: 50.25 ng/ml



#28 Decachlorobiphenyl

R.T.: 8.289 min
Delta R.T.: 0.000 min
Response: 35276423
Conc: 20.72 ng/ml

Instrument :
ECD_L
ClientSampled :
PB129673BS



#28 Decachlorobiphenyl

R.T.: 9.182 min
Delta R.T.: 0.000 min
Response: 48360245
Conc: 21.12 ng/ml