

Data Path : Z:\pestpcbsrv\HPCHEM1\ECD\_L\Data\PL062220\  
 Data File : PL059409.D  
 Signal(s) : Signal #1: ECD1A.ch Signal #2: ECD2B.ch  
 Acq On : 22 Jun 2020 15:53  
 Operator : AJ\MA  
 Sample : PB129677BS  
 Misc :  
 ALS Vial : 11 Sample Multiplier: 1

Instrument :  
 ECD\_L  
 ClientSampleId :  
 PB129677BS

Integration File signal 1: autoint1.e  
 Integration File signal 2: autoint2.e  
 Quant Time: Jun 23 04:03:02 2020  
 Quant Method : Z:\pestpcbsrv\HPCHEM1\ECD\_L\methods\PL062220.M  
 Quant Title : GC Extractables  
 QLast Update : Mon Jun 22 14:09:48 2020  
 Response via : Initial Calibration  
 Integrator: ChemStation

Volume Inj. : 1 µl  
 Signal #1 Phase : ZB-MR2 Signal #2 Phase: ZB-MR1  
 Signal #1 Info : 30M x 0.32mm x0.2 Signal #2 Info : 30M x 0.32mm x0.5µm

	Compound	RT#1	RT#2	Resp#1	Resp#2	ng/ml	ng/ml
-----							
System Monitoring Compounds							
1)	SA Tetrachlo...	3.517	4.070	36357338	53357119	20.231	20.673
28)	SA Decachlor...	8.289	9.180	36115234	49698825	21.209	21.706
Target Compounds							
2)	A alpha-BHC	3.959	4.463	131.8E6	176.2E6	51.055	51.714
3)	MA gamma-BHC...	4.243	4.750	116.2E6	163.3E6	50.970	52.181
4)	MA Heptachlor	4.549	5.265	109.2E6	169.0E6	51.210	52.182
5)	MB Aldrin	4.799	5.573	92696468	158.1E6	52.092	51.345
6)	B beta-BHC	4.493	4.919	47680475	71450677	50.068	52.535
7)	B delta-BHC	4.700	5.139	102.9E6	151.6E6	50.439	54.482
8)	B Heptachlo...	5.243	5.961	77784586	143.9E6	51.746	57.351
9)	A Endosulfan I	5.583	6.319	75549868	140.2E6	51.353	51.640
10)	B gamma-Chl...	5.471	6.195	78578843	151.1E6	51.233	51.578
11)	B alpha-Chl...	5.529	6.268	79420839	152.1E6	51.106	51.647
12)	B 4,4'-DDE	5.693	6.423	74871290	141.0E6	51.527	52.225
13)	MA Dieldrin	5.827	6.577	81603431	146.8E6	51.727	52.128
14)	MA Endrin	6.084	6.796	78480051	127.6E6	51.652	51.642
15)	B Endosulfa...	6.356	7.004	79418212	130.9E6	51.428	51.627
16)	A 4,4'-DDD	6.208	6.914	67912503	116.7E6	52.042	52.446
17)	MA 4,4'-DDT	6.451	7.215	70376550	118.0E6	53.374	51.898
18)	B Endrin al...	6.525	7.129	68104250	113.5E6	51.529	51.748
19)	B Endosulfa...	6.738	7.352	78785401	124.9E6	51.892	51.588
20)	A Methoxychlor	6.996	7.671	42541356	67425669	52.492	50.793
21)	B Endrin ke...	7.230	7.825	91425527	134.0E6	52.437	51.892
22)	Mirex	7.423	8.283	72560845	102.0E6	51.385	51.624

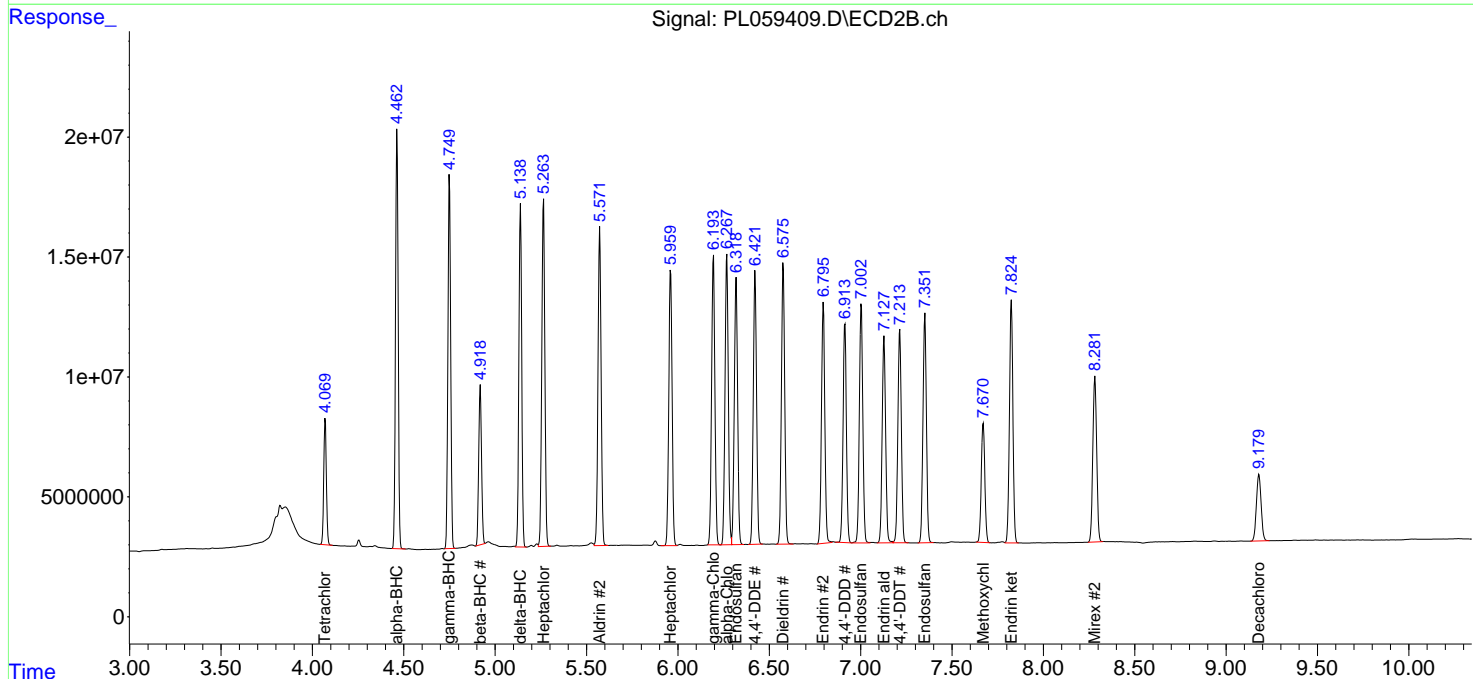
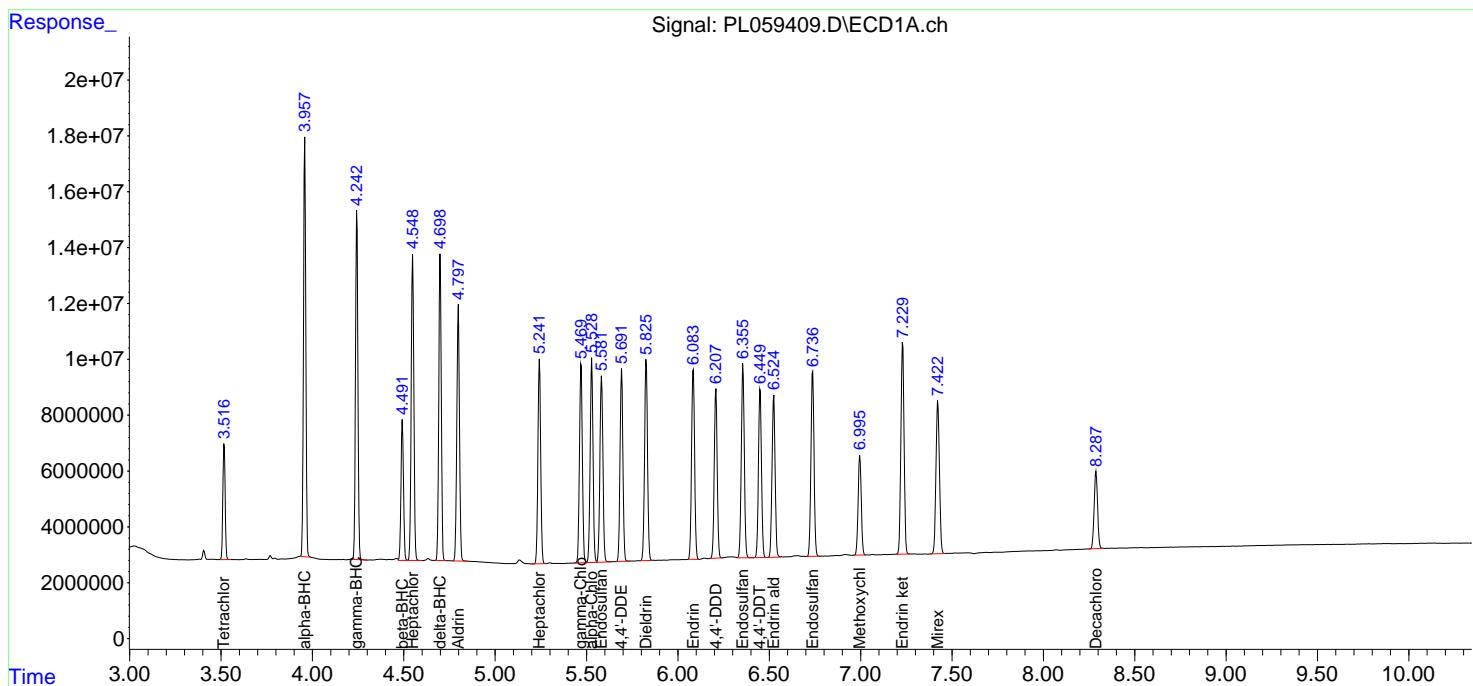
(f)=RT Delta > 1/2 Window (#)=Amounts differ by > 25% (m)=manual int.

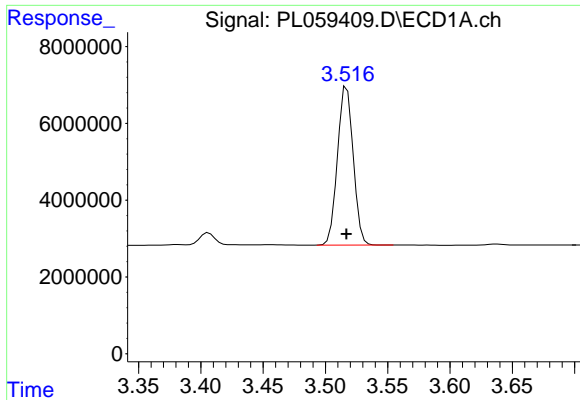
Data Path : Z:\pestpcbsrv\HPCHEM1\ECD\_L\Data\PL062220\  
 Data File : PL059409.D  
 Signal(s) : Signal #1: ECD1A.ch Signal #2: ECD2B.ch  
 Acq On : 22 Jun 2020 15:53  
 Operator : AJ\MA  
 Sample : PB129677BS  
 Misc :  
 ALS Vial : 11 Sample Multiplier: 1

Instrument :  
 ECD\_L  
 Client Sampled :  
 PB129677BS

Integration File signal 1: autoint1.e  
 Integration File signal 2: autoint2.e  
 Quant Time: Jun 23 04:03:02 2020  
 Quant Method : Z:\pestpcbsrv\HPCHEM1\ECD\_L\methods\PL062220.M  
 Quant Title : GC Extractables  
 QLast Update : Mon Jun 22 14:09:48 2020  
 Response via : Initial Calibration  
 Integrator: ChemStation

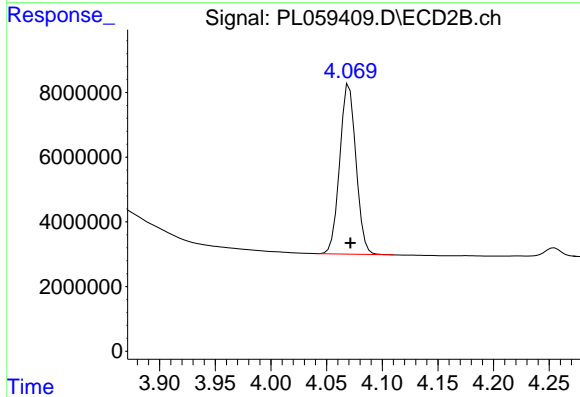
Volume Inj. : 1 µl  
 Signal #1 Phase : ZB-MR2 Signal #2 Phase: ZB-MR1  
 Signal #1 Info : 30M x 0.32mm x0.2 Signal #2 Info : 30M x 0.32mm x0.5µm



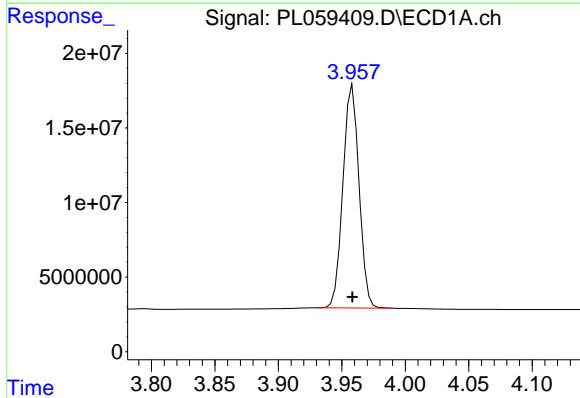


#1 Tetrachloro-m-xylene  
 R.T.: 3.517 min  
 Delta R.T.: 0.000 min  
 Response: 36357338  
 Conc: 20.23 ng/ml

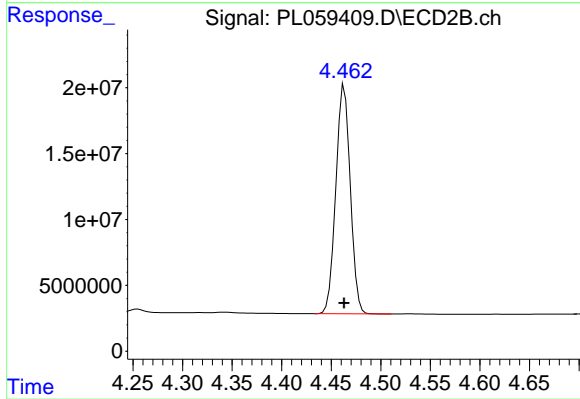
Instrument :  
 ECD\_L  
 ClientSampleId :  
 PB129677BS



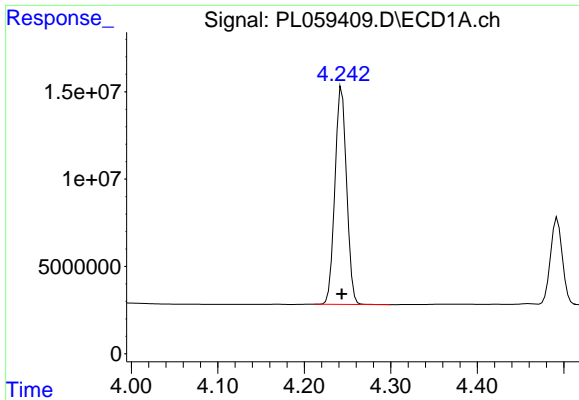
#1 Tetrachloro-m-xylene  
 R.T.: 4.070 min  
 Delta R.T.: -0.001 min  
 Response: 53357119  
 Conc: 20.67 ng/ml



#2 alpha-BHC  
 R.T.: 3.959 min  
 Delta R.T.: 0.000 min  
 Response: 131775959  
 Conc: 51.05 ng/ml



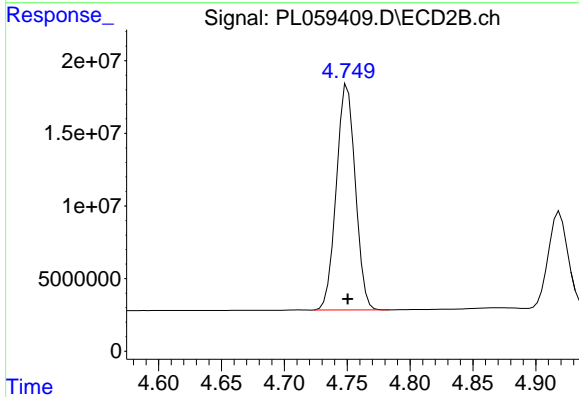
#2 alpha-BHC  
 R.T.: 4.463 min  
 Delta R.T.: 0.000 min  
 Response: 176168527  
 Conc: 51.71 ng/ml



#3 gamma-BHC (Lindane)

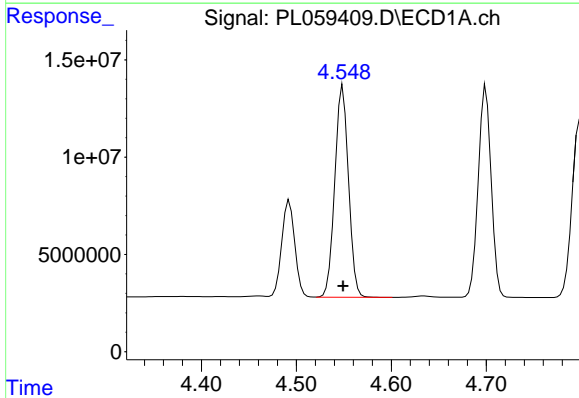
R.T.: 4.243 min  
 Delta R.T.: 0.000 min  
 Response: 116242356  
 Conc: 50.97 ng/ml

Instrument :  
 ECD\_L  
 ClientSampleId :  
 PB129677BS



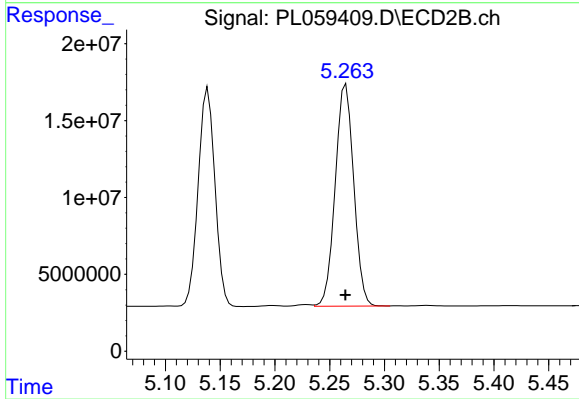
#3 gamma-BHC (Lindane)

R.T.: 4.750 min  
 Delta R.T.: 0.000 min  
 Response: 163322219  
 Conc: 52.18 ng/ml



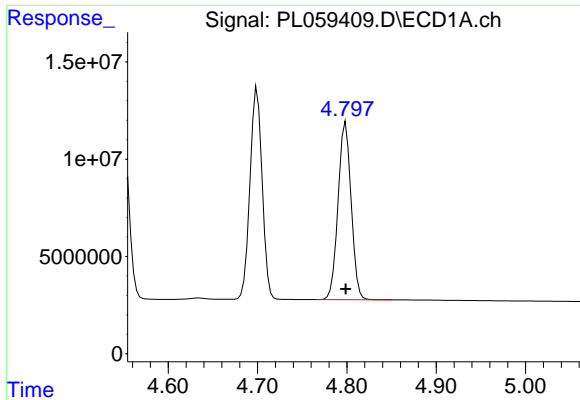
#4 Heptachlor

R.T.: 4.549 min  
 Delta R.T.: 0.000 min  
 Response: 109205472  
 Conc: 51.21 ng/ml



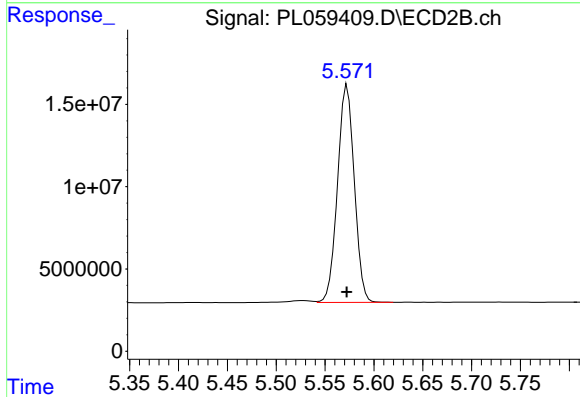
#4 Heptachlor

R.T.: 5.265 min  
 Delta R.T.: 0.000 min  
 Response: 169010496  
 Conc: 52.18 ng/ml

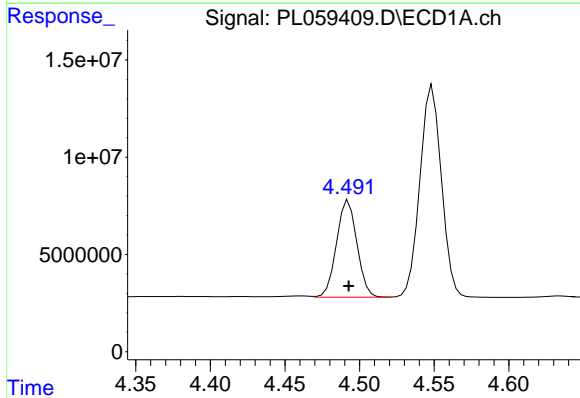


#5 Aldrin  
 R.T.: 4.799 min  
 Delta R.T.: 0.000 min  
 Response: 92696468  
 Conc: 52.09 ng/ml

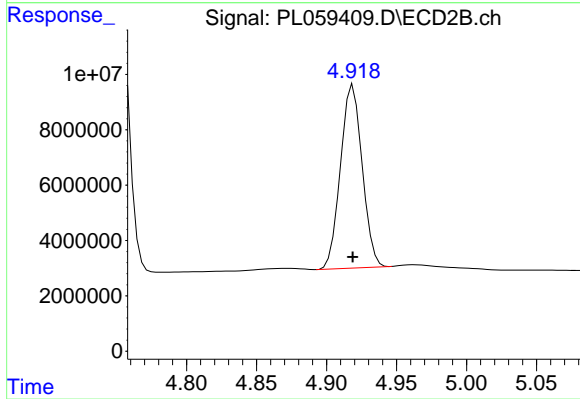
Instrument :  
 ECD\_L  
 ClientSampleId :  
 PB129677BS



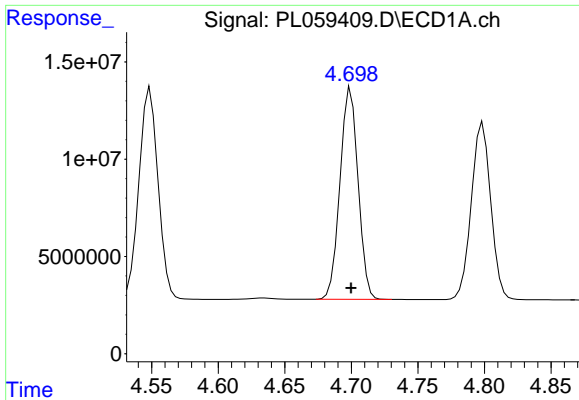
#5 Aldrin  
 R.T.: 5.573 min  
 Delta R.T.: 0.000 min  
 Response: 158120978  
 Conc: 51.34 ng/ml



#6 beta-BHC  
 R.T.: 4.493 min  
 Delta R.T.: 0.000 min  
 Response: 47680475  
 Conc: 50.07 ng/ml

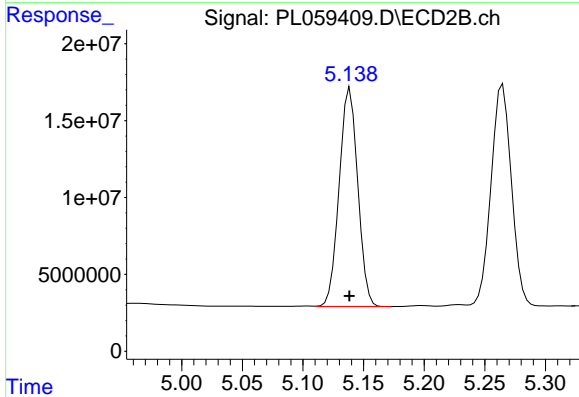


#6 beta-BHC  
 R.T.: 4.919 min  
 Delta R.T.: 0.000 min  
 Response: 71450677  
 Conc: 52.54 ng/ml

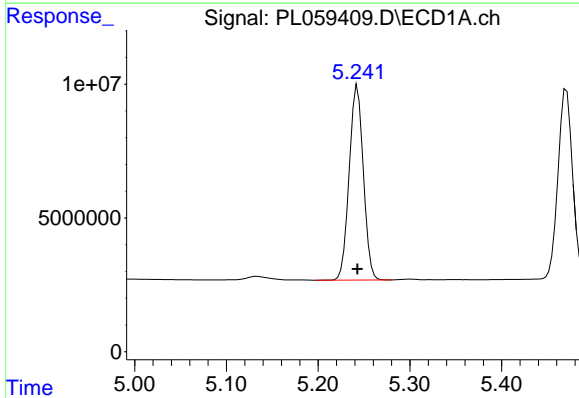


#7 delta-BHC  
R.T.: 4.700 min  
Delta R.T.: 0.000 min  
Response: 102877887  
Conc: 50.44 ng/ml

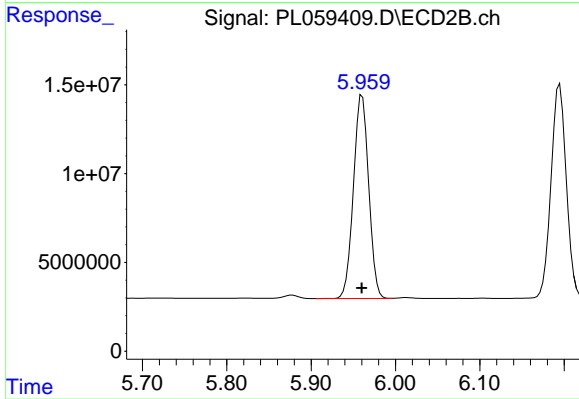
Instrument :  
ECD\_L  
ClientSampled :  
PB129677BS



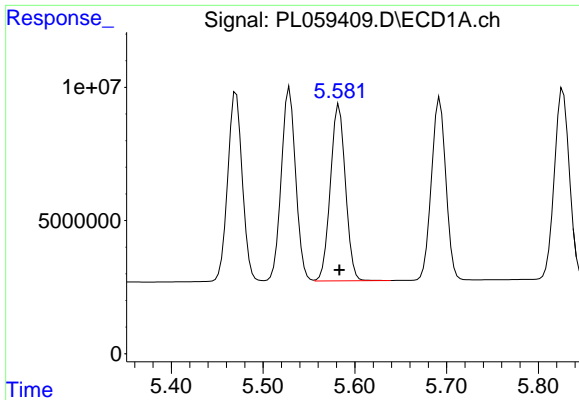
#7 delta-BHC  
R.T.: 5.139 min  
Delta R.T.: 0.000 min  
Response: 151584496  
Conc: 54.48 ng/ml



#8 Heptachlor epoxide  
R.T.: 5.243 min  
Delta R.T.: 0.000 min  
Response: 77784586  
Conc: 51.75 ng/ml

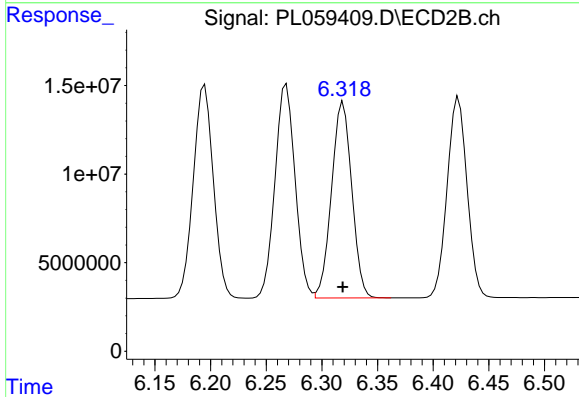


#8 Heptachlor epoxide  
R.T.: 5.961 min  
Delta R.T.: 0.000 min  
Response: 143935076  
Conc: 57.35 ng/ml

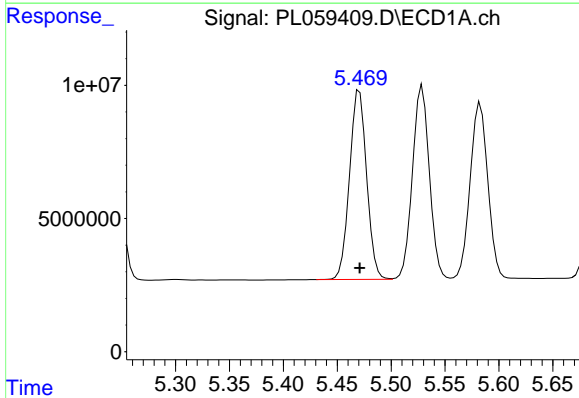


#9 Endosulfan I  
 R.T.: 5.583 min  
 Delta R.T.: 0.000 min  
 Response: 75549868  
 Conc: 51.35 ng/ml

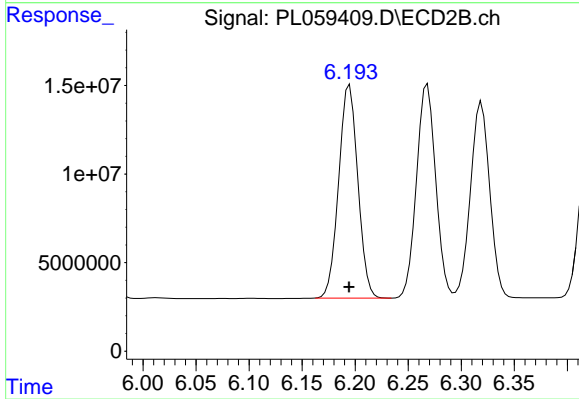
Instrument :  
 ECD\_L  
 ClientSampleId :  
 PB129677BS



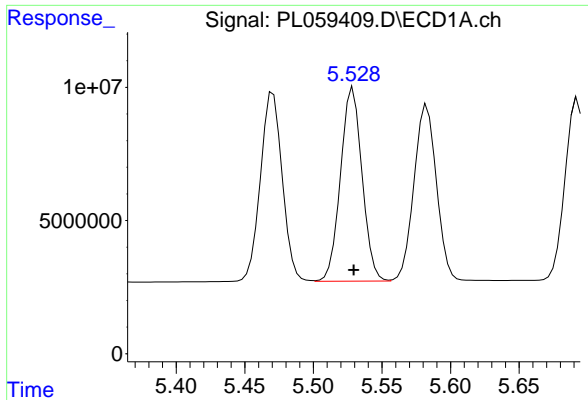
#9 Endosulfan I  
 R.T.: 6.319 min  
 Delta R.T.: 0.000 min  
 Response: 140151212  
 Conc: 51.64 ng/ml



#10 gamma-Chlordane  
 R.T.: 5.471 min  
 Delta R.T.: 0.000 min  
 Response: 78578843  
 Conc: 51.23 ng/ml

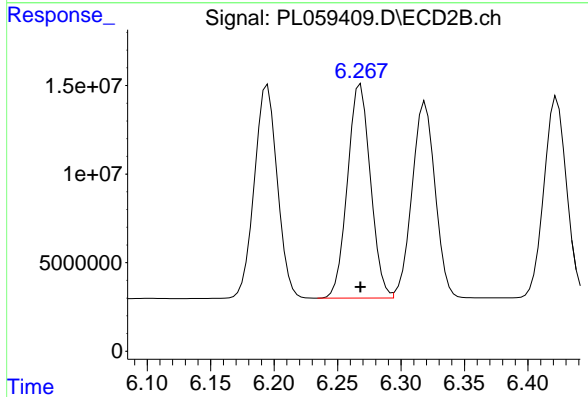


#10 gamma-Chlordane  
 R.T.: 6.195 min  
 Delta R.T.: 0.000 min  
 Response: 151076677  
 Conc: 51.58 ng/ml

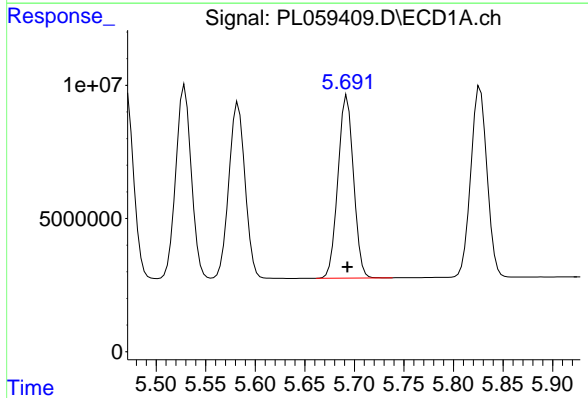


#11 alpha-Chlordane  
 R.T.: 5.529 min  
 Delta R.T.: 0.000 min  
 Response: 79420839  
 Conc: 51.11 ng/ml

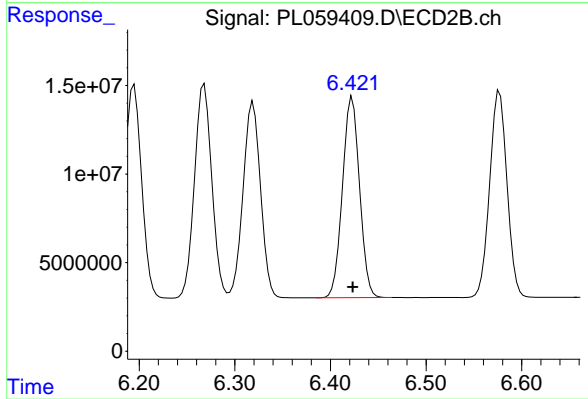
Instrument :  
 ECD\_L  
 ClientSampleId :  
 PB129677BS



#11 alpha-Chlordane  
 R.T.: 6.268 min  
 Delta R.T.: 0.000 min  
 Response: 152088848  
 Conc: 51.65 ng/ml

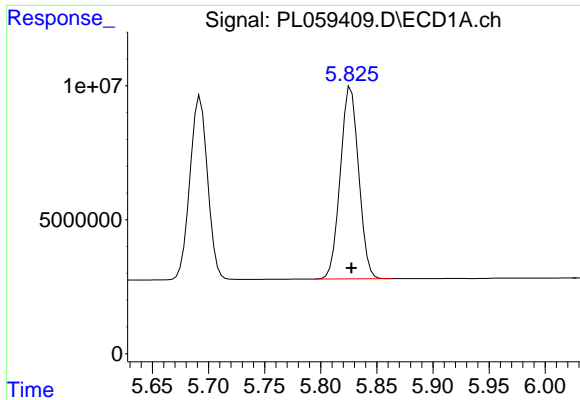


#12 4,4'-DDE  
 R.T.: 5.693 min  
 Delta R.T.: 0.000 min  
 Response: 74871290  
 Conc: 51.53 ng/ml



#12 4,4'-DDE  
 R.T.: 6.423 min  
 Delta R.T.: 0.000 min  
 Response: 141043326  
 Conc: 52.22 ng/ml

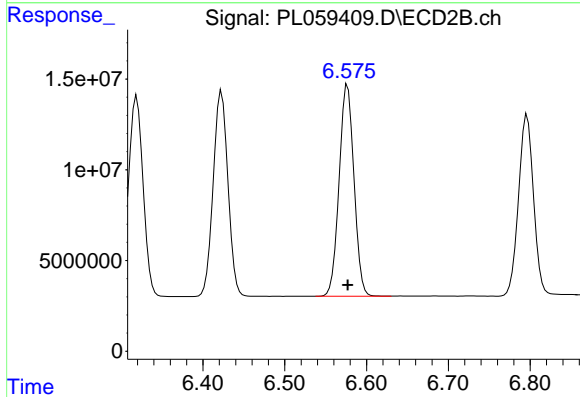




#13 Dieldrin

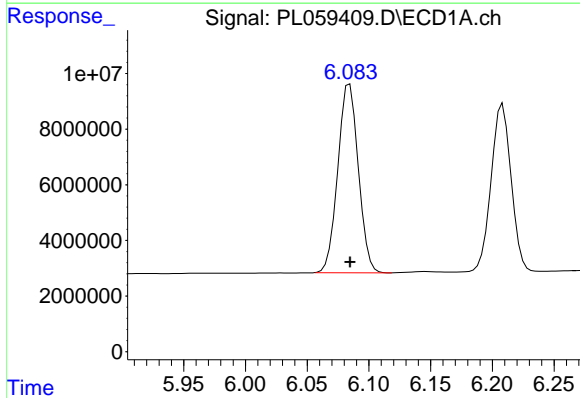
R.T.: 5.827 min  
 Delta R.T.: 0.000 min  
 Response: 81603431  
 Conc: 51.73 ng/ml

Instrument :  
 ECD\_L  
 ClientSampleId :  
 PB129677BS



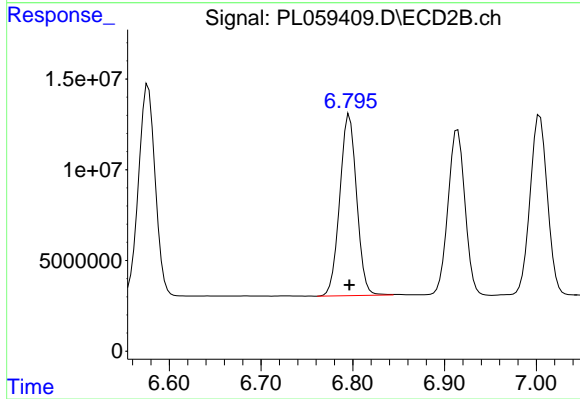
#13 Dieldrin

R.T.: 6.577 min  
 Delta R.T.: 0.000 min  
 Response: 146753527  
 Conc: 52.13 ng/ml



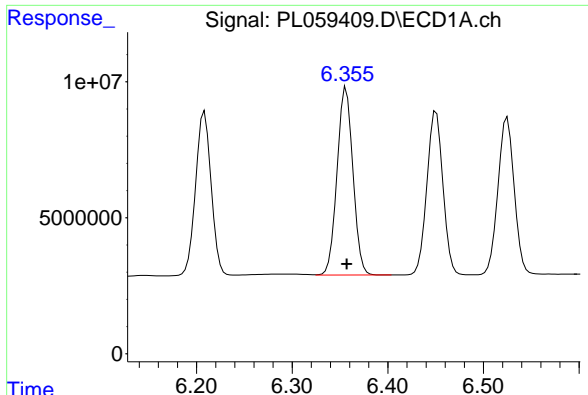
#14 Endrin

R.T.: 6.084 min  
 Delta R.T.: 0.000 min  
 Response: 78480051  
 Conc: 51.65 ng/ml



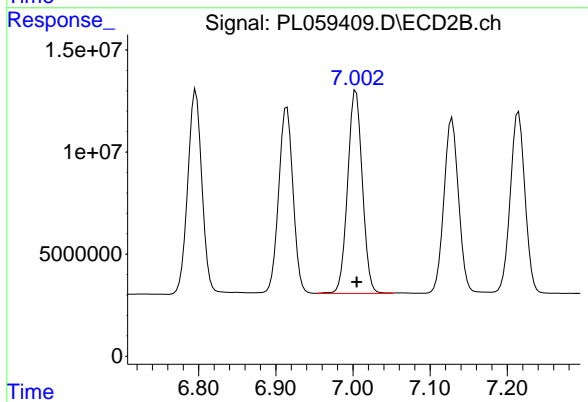
#14 Endrin

R.T.: 6.796 min  
 Delta R.T.: 0.000 min  
 Response: 127567651  
 Conc: 51.64 ng/ml

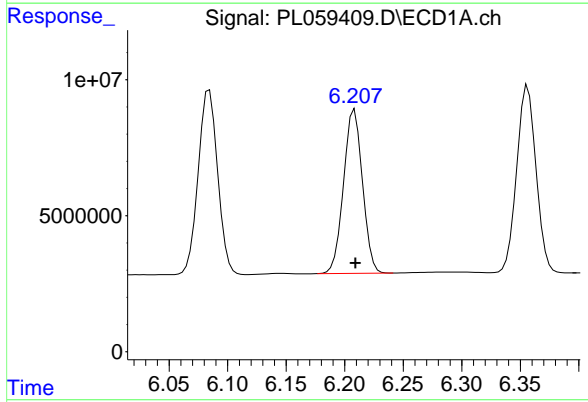


#15 Endosulfan II  
 R.T.: 6.356 min  
 Delta R.T.: 0.000 min  
 Response: 79418212  
 Conc: 51.43 ng/ml

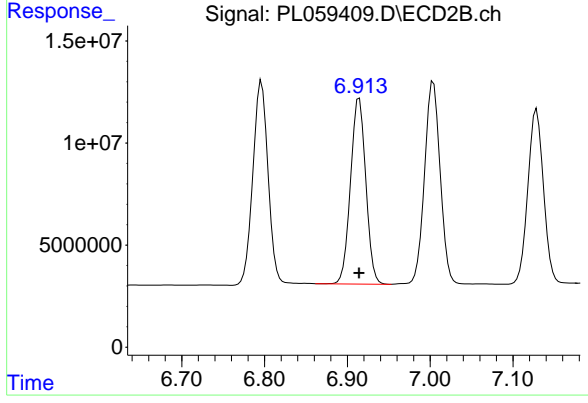
Instrument :  
 ECD\_L  
 ClientSampled :  
 PB129677BS



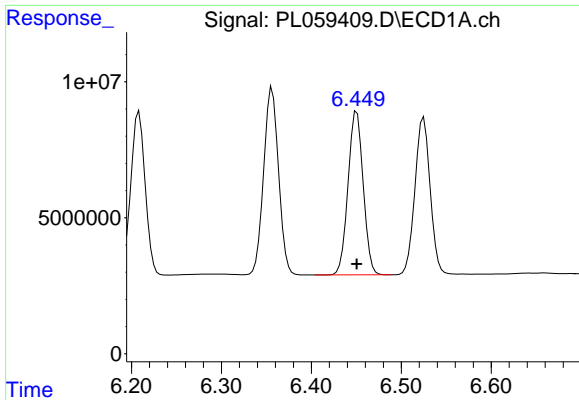
#15 Endosulfan II  
 R.T.: 7.004 min  
 Delta R.T.: 0.000 min  
 Response: 130919144  
 Conc: 51.63 ng/ml



#16 4,4'-DDD  
 R.T.: 6.208 min  
 Delta R.T.: 0.000 min  
 Response: 67912503  
 Conc: 52.04 ng/ml

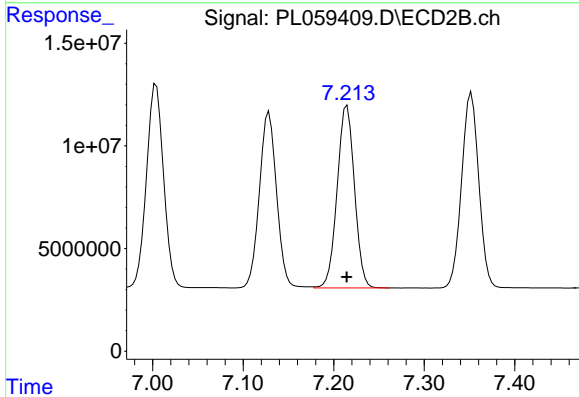


#16 4,4'-DDD  
 R.T.: 6.914 min  
 Delta R.T.: 0.000 min  
 Response: 116698326  
 Conc: 52.45 ng/ml

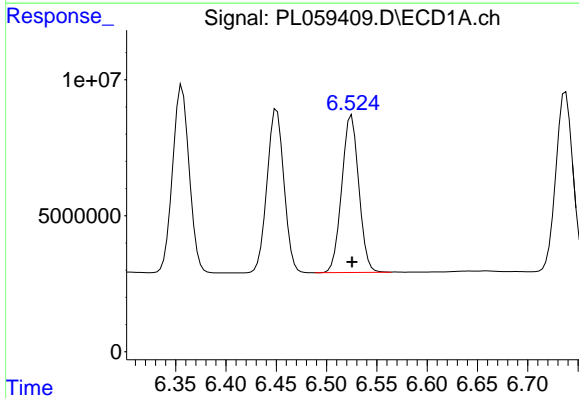


#17 4,4'-DDT  
 R.T.: 6.451 min  
 Delta R.T.: 0.000 min  
 Response: 70376550  
 Conc: 53.37 ng/ml

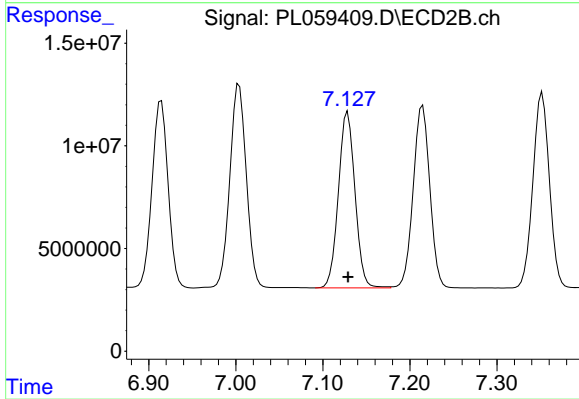
Instrument :  
 ECD\_L  
 ClientSampled :  
 PB129677BS



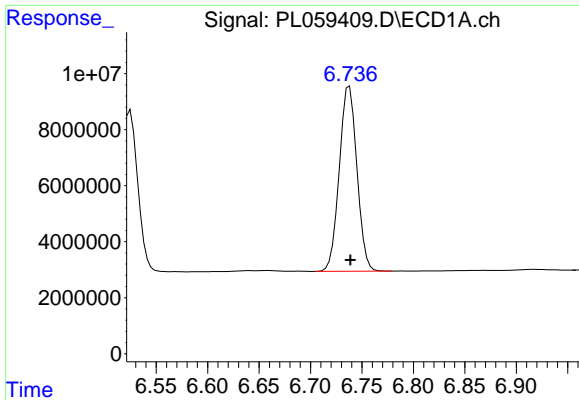
#17 4,4'-DDT  
 R.T.: 7.215 min  
 Delta R.T.: 0.000 min  
 Response: 117965743  
 Conc: 51.90 ng/ml



#18 Endrin aldehyde  
 R.T.: 6.525 min  
 Delta R.T.: 0.000 min  
 Response: 68104250  
 Conc: 51.53 ng/ml



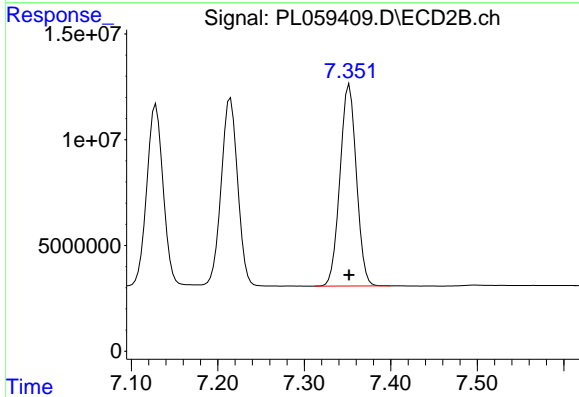
#18 Endrin aldehyde  
 R.T.: 7.129 min  
 Delta R.T.: 0.000 min  
 Response: 113499280  
 Conc: 51.75 ng/ml



#19 Endosulfan Sulfate

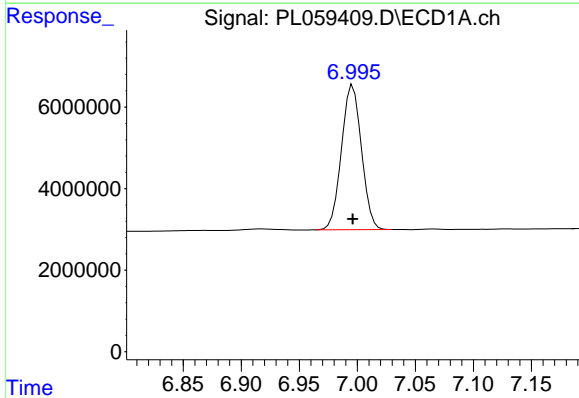
R.T.: 6.738 min  
Delta R.T.: 0.000 min  
Response: 78785401  
Conc: 51.89 ng/ml

Instrument :  
ECD\_L  
ClientSampleId :  
PB129677BS



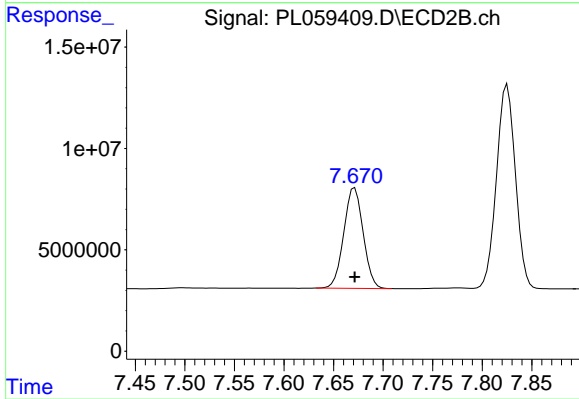
#19 Endosulfan Sulfate

R.T.: 7.352 min  
Delta R.T.: 0.000 min  
Response: 124863725  
Conc: 51.59 ng/ml



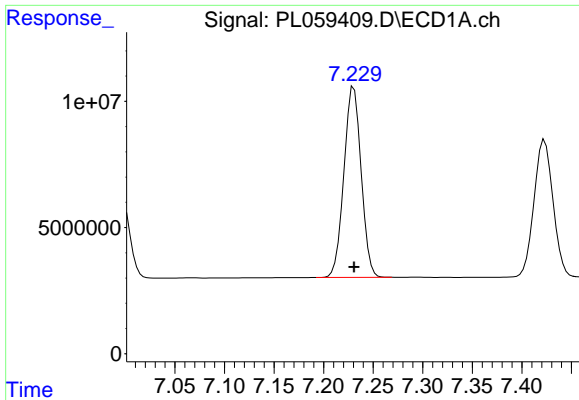
#20 Methoxychlor

R.T.: 6.996 min  
Delta R.T.: 0.000 min  
Response: 42541356  
Conc: 52.49 ng/ml



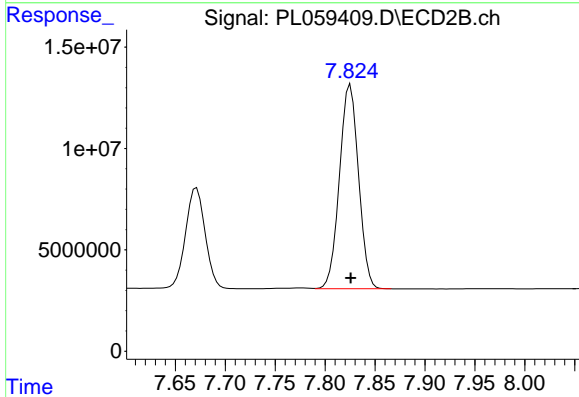
#20 Methoxychlor

R.T.: 7.671 min  
Delta R.T.: 0.000 min  
Response: 67425669  
Conc: 50.79 ng/ml

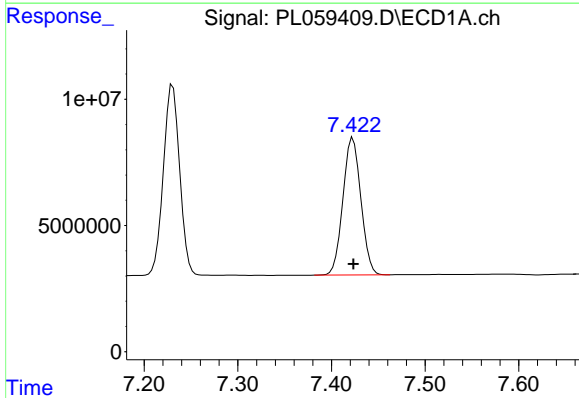


#21 Endrin ketone  
 R.T.: 7.230 min  
 Delta R.T.: 0.000 min  
 Response: 91425527  
 Conc: 52.44 ng/ml

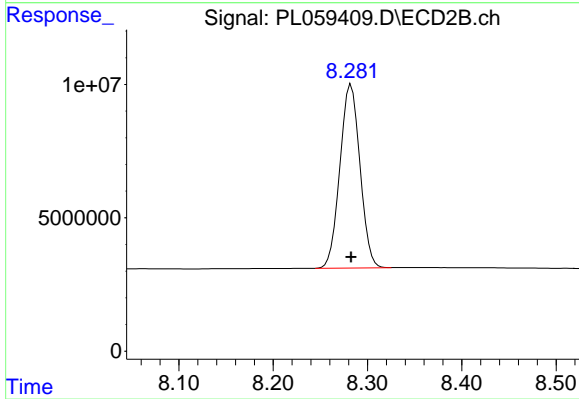
Instrument :  
 ECD\_L  
 ClientSampleId :  
 PB129677BS



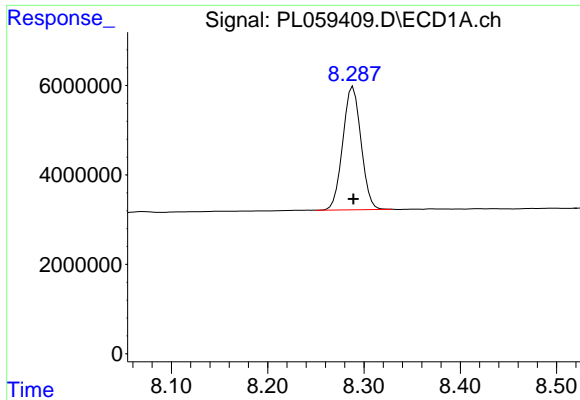
#21 Endrin ketone  
 R.T.: 7.825 min  
 Delta R.T.: 0.000 min  
 Response: 134044784  
 Conc: 51.89 ng/ml



#22 Mirex  
 R.T.: 7.423 min  
 Delta R.T.: 0.000 min  
 Response: 72560845  
 Conc: 51.39 ng/ml



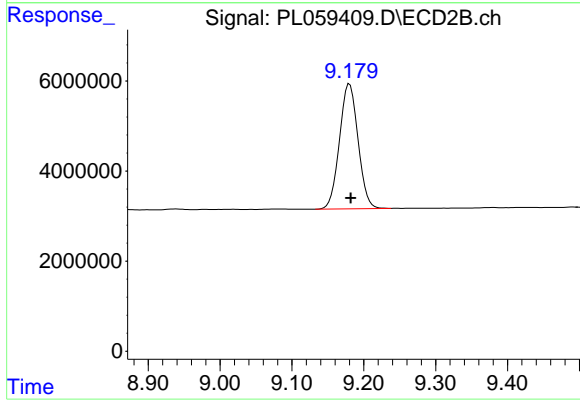
#22 Mirex  
 R.T.: 8.283 min  
 Delta R.T.: 0.000 min  
 Response: 101965491  
 Conc: 51.62 ng/ml



#28 Decachlorobiphenyl

R.T.: 8.289 min  
Delta R.T.: 0.000 min  
Response: 36115234  
Conc: 21.21 ng/ml

Instrument :  
ECD\_L  
ClientSampled :  
PB129677BS



#28 Decachlorobiphenyl

R.T.: 9.180 min  
Delta R.T.: -0.002 min  
Response: 49698825  
Conc: 21.71 ng/ml