

Data Path : Z:\pestpcbsrv\HPCHEM1\ECD_L\Data\PL062220\
 Data File : PL059410.D
 Signal(s) : Signal #1: ECD1A.ch Signal #2: ECD2B.ch
 Acq On : 22 Jun 2020 16:07
 Operator : AJ\MA
 Sample : L3079-10
 Misc :
 ALS Vial : 12 Sample Multiplier: 1

Instrument :
 ECD_L
 ClientSampleId :
 JFK-SB-01-0.0-72.0-D

Integration File signal 1: autoint1.e
 Integration File signal 2: autoint2.e
 Quant Time: Jun 23 04:03:17 2020
 Quant Method : Z:\pestpcbsrv\HPCHEM1\ECD_L\methods\PL062220.M
 Quant Title : GC Extractables
 QLast Update : Mon Jun 22 14:09:48 2020
 Response via : Initial Calibration
 Integrator: ChemStation

Volume Inj. : 1 µl
 Signal #1 Phase : ZB-MR2 Signal #2 Phase: ZB-MR1
 Signal #1 Info : 30M x 0.32mm x0.2 Signal #2 Info : 30M x 0.32mm x0.5µm

Compound	RT#1	RT#2	Resp#1	Resp#2	ng/ml	ng/ml

System Monitoring Compounds						
1) SA Tetrachlo...	3.518	4.071	41855612	59817111	23.290	23.176
28) SA Decachlor...	8.289	9.183	35162529	47033572	20.650	20.542

Target Compounds

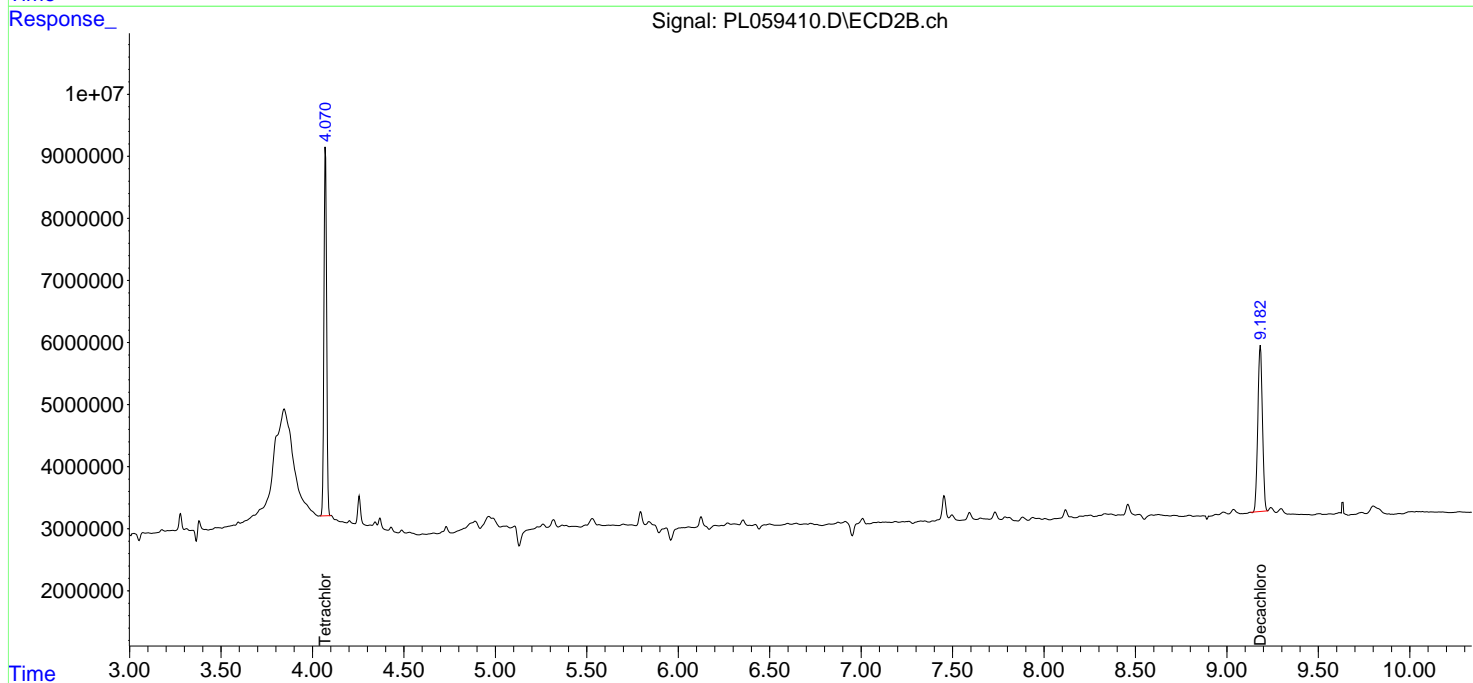
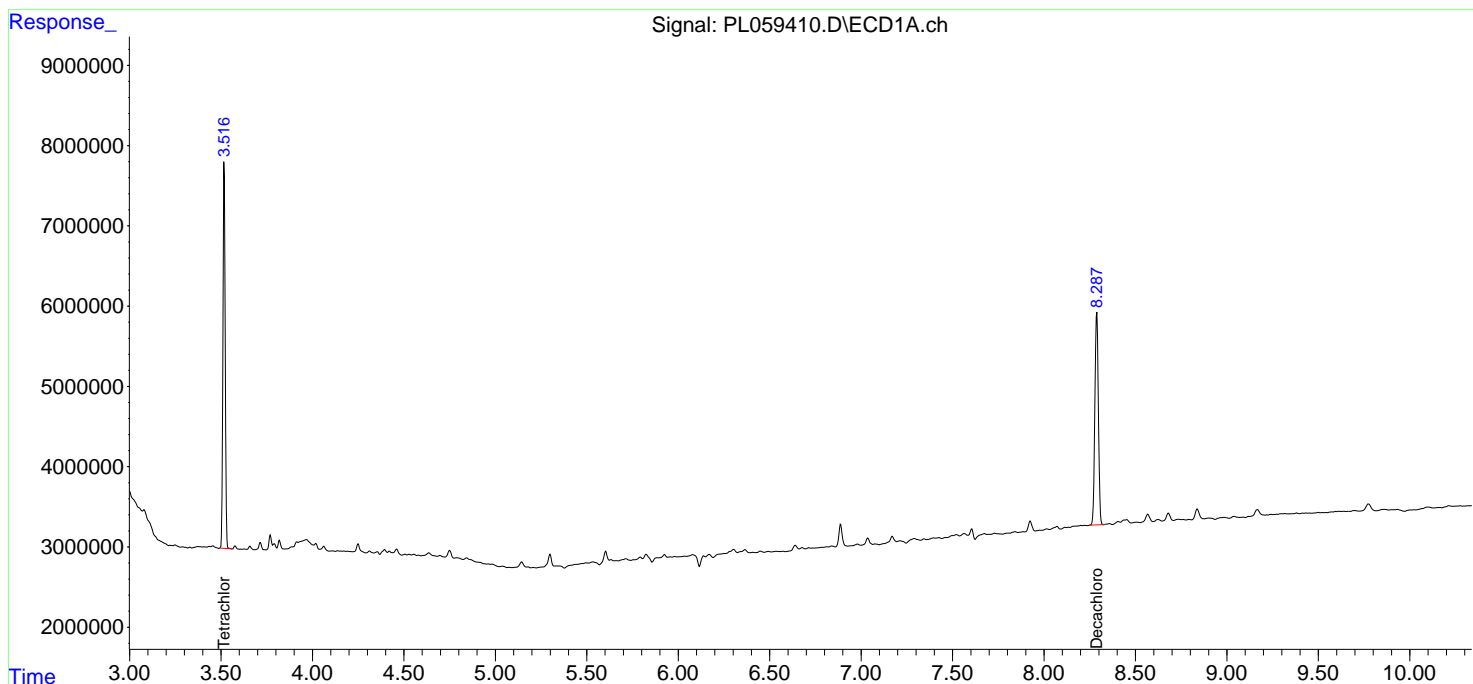
(f)=RT Delta > 1/2 Window (#)=Amounts differ by > 25% (m)=manual int.

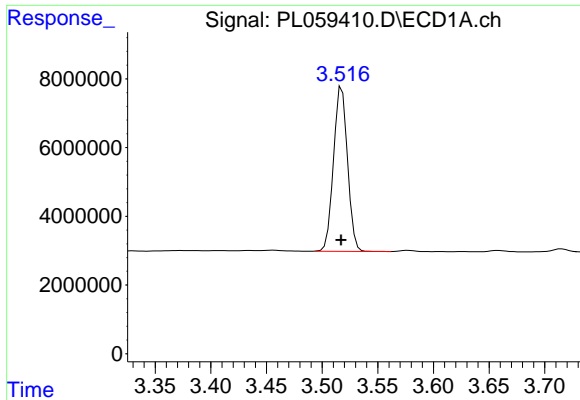
Data Path : Z:\pestpcbsrv\HPCHEM1\ECD_L\Data\PL062220\
 Data File : PL059410.D
 Signal(s) : Signal #1: ECD1A.ch Signal #2: ECD2B.ch
 Acq On : 22 Jun 2020 16:07
 Operator : AJ\MA
 Sample : L3079-10
 Misc :
 ALS Vial : 12 Sample Multiplier: 1

Instrument :
 ECD_L
 ClientSampleId :
 JFK-SB-01-0.0-72.0-D

Integration File signal 1: autoint1.e
 Integration File signal 2: autoint2.e
 Quant Time: Jun 23 04:03:17 2020
 Quant Method : Z:\pestpcbsrv\HPCHEM1\ECD_L\methods\PL062220.M
 Quant Title : GC Extractables
 QLast Update : Mon Jun 22 14:09:48 2020
 Response via : Initial Calibration
 Integrator: ChemStation

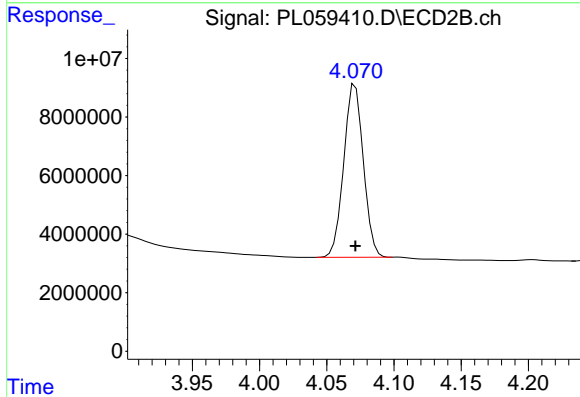
Volume Inj. : 1 µl
 Signal #1 Phase : ZB-MR2 Signal #2 Phase: ZB-MR1
 Signal #1 Info : 30M x 0.32mm x0.2 Signal #2 Info : 30M x 0.32mm x0.5µm



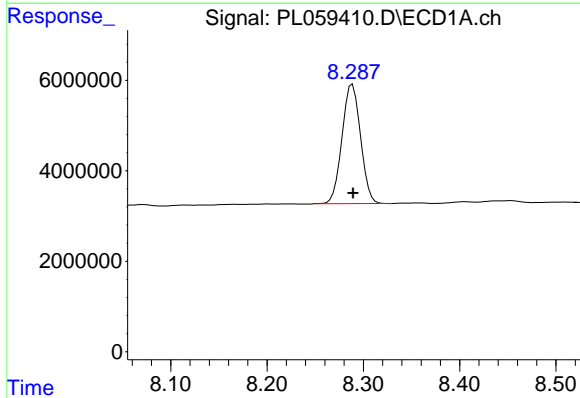


#1 Tetrachloro-m-xylene
 R.T.: 3.518 min
 Delta R.T.: 0.000 min
 Response: 41855612
 Conc: 23.29 ng/ml

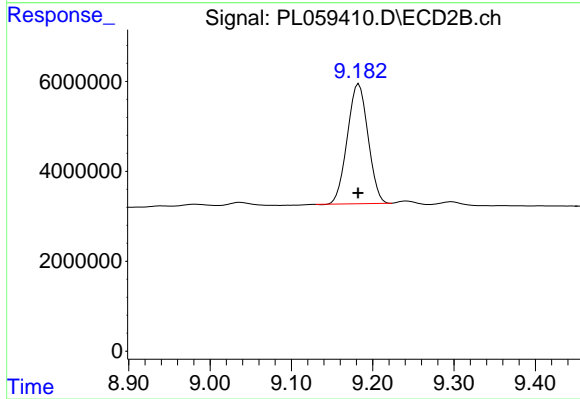
Instrument :
 ECD_L
 ClientSampleId :
 JFK-SB-01-0.0-72.0-D



#1 Tetrachloro-m-xylene
 R.T.: 4.071 min
 Delta R.T.: 0.000 min
 Response: 59817111
 Conc: 23.18 ng/ml



#28 Decachlorobiphenyl
 R.T.: 8.289 min
 Delta R.T.: 0.000 min
 Response: 35162529
 Conc: 20.65 ng/ml



#28 Decachlorobiphenyl
 R.T.: 9.183 min
 Delta R.T.: 0.000 min
 Response: 47033572
 Conc: 20.54 ng/ml