

Data Path : Z:\pestpcbsrv\HPCHEM1\ECD_L\Data\PL062220\
 Data File : PL059420.D
 Signal(s) : Signal #1: ECD1A.ch Signal #2: ECD2B.ch
 Acq On : 22 Jun 2020 18:29
 Operator : AJ\MA
 Sample : L3080-01
 Misc :
 ALS Vial : 22 Sample Multiplier: 1

Instrument :
 ECD_L
 ClientSampleId :
 JFK-GW-01-15

Integration File signal 1: autoint1.e
 Integration File signal 2: autoint2.e
 Quant Time: Jun 23 04:05:38 2020
 Quant Method : Z:\pestpcbsrv\HPCHEM1\ECD_L\methods\PL062220.M
 Quant Title : GC Extractables
 QLast Update : Mon Jun 22 14:09:48 2020
 Response via : Initial Calibration
 Integrator: ChemStation

Volume Inj. : 1 µl
 Signal #1 Phase : ZB-MR2 Signal #2 Phase: ZB-MR1
 Signal #1 Info : 30M x 0.32mm x0.2 Signal #2 Info : 30M x 0.32mm x0.5µm

| Compound | RT#1 | RT#2 | Resp#1 | Resp#2 | ng/ml | ng/ml |
|-----------------------------|-------|-------|----------|----------|--------|--------|
| ----- | | | | | | |
| System Monitoring Compounds | | | | | | |
| 1) SA Tetrachlo... | 3.518 | 4.072 | 39151658 | 55672196 | 21.786 | 21.570 |
| 28) SA Decachlor... | 8.290 | 9.184 | 28496782 | 38949232 | 16.735 | 17.011 |

Target Compounds

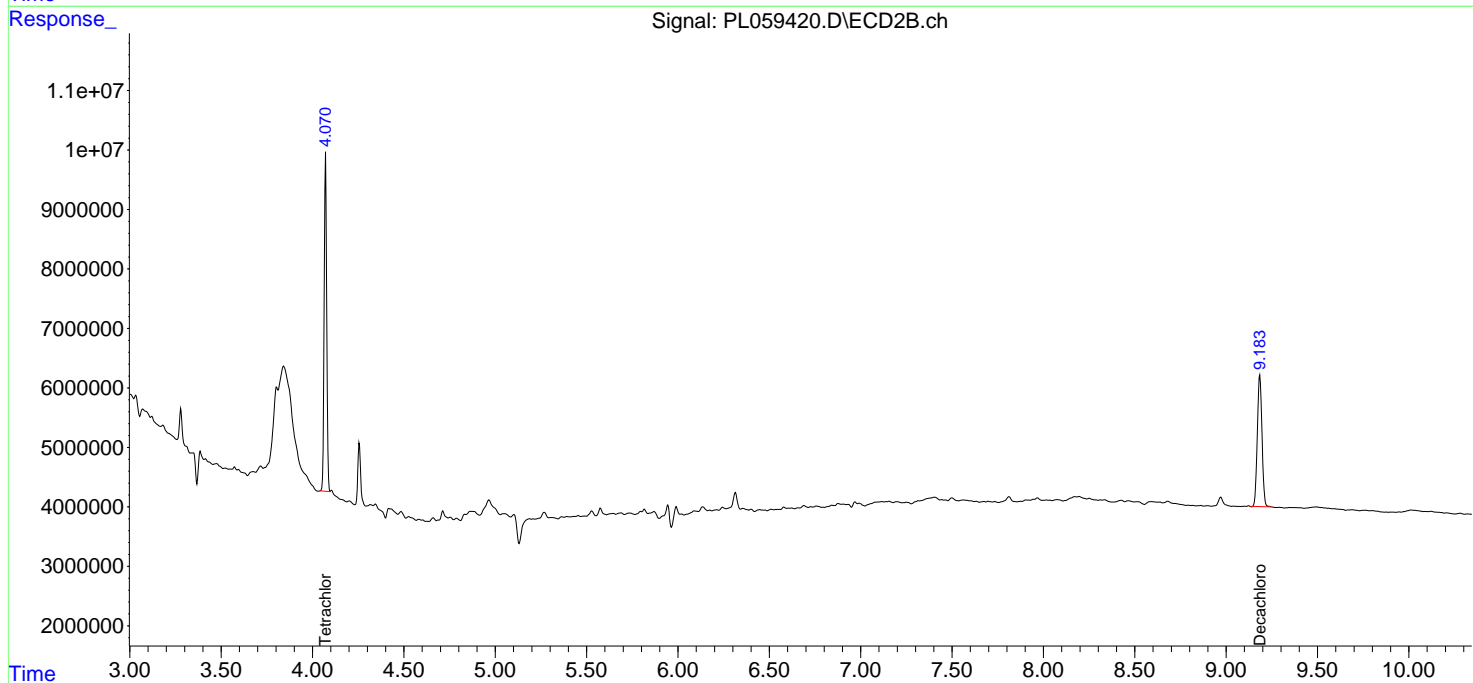
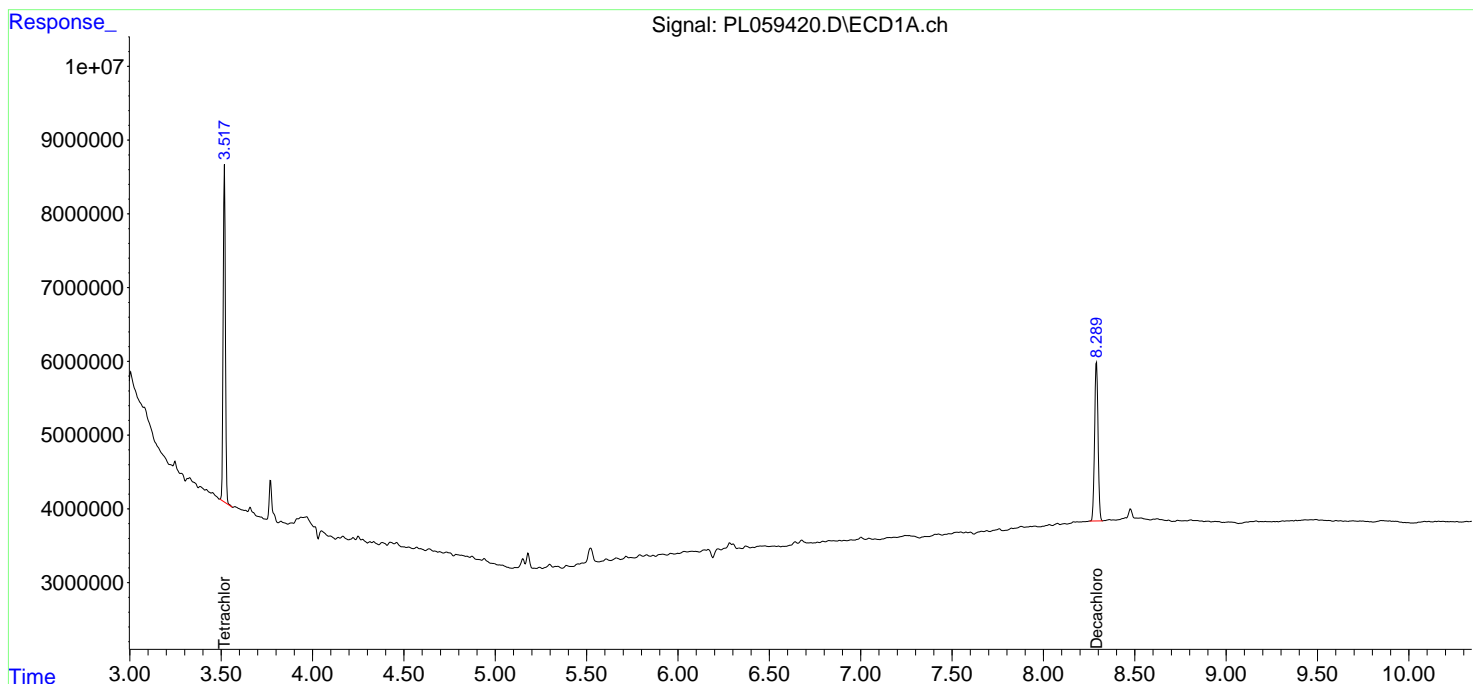
(f)=RT Delta > 1/2 Window (#)=Amounts differ by > 25% (m)=manual int.

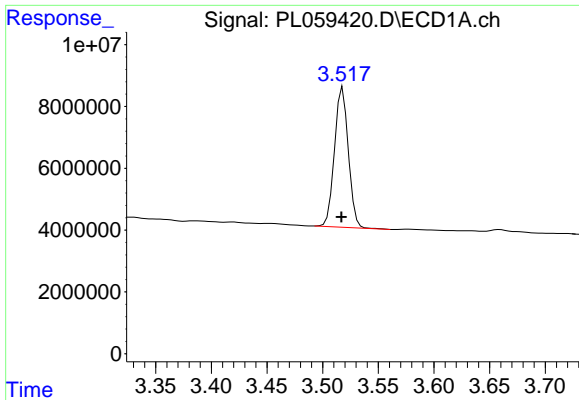
Data Path : Z:\pestpcbsrv\HPCHEM1\ECD_L\Data\PL062220\
 Data File : PL059420.D
 Signal(s) : Signal #1: ECD1A.ch Signal #2: ECD2B.ch
 Acq On : 22 Jun 2020 18:29
 Operator : AJ\MA
 Sample : L3080-01
 Misc :
 ALS Vial : 22 Sample Multiplier: 1

Instrument :
 ECD_L
 ClientSampled :
 JFK-GW-01-15

Integration File signal 1: autoint1.e
 Integration File signal 2: autoint2.e
 Quant Time: Jun 23 04:05:38 2020
 Quant Method : Z:\pestpcbsrv\HPCHEM1\ECD_L\methods\PL062220.M
 Quant Title : GC Extractables
 QLast Update : Mon Jun 22 14:09:48 2020
 Response via : Initial Calibration
 Integrator: ChemStation

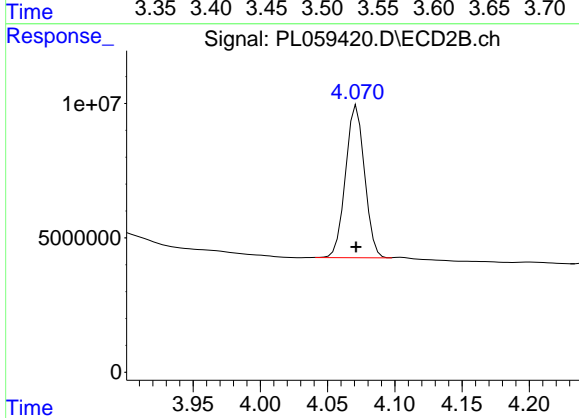
Volume Inj. : 1 µl
 Signal #1 Phase : ZB-MR2 Signal #2 Phase: ZB-MR1
 Signal #1 Info : 30M x 0.32mm x0.2 Signal #2 Info : 30M x 0.32mm x0.5µm



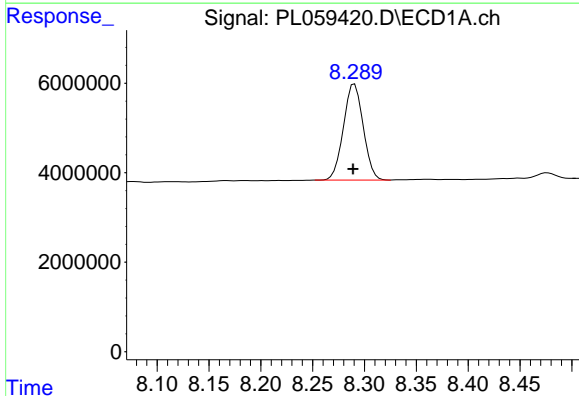


#1 Tetrachloro-m-xylene
 R.T.: 3.518 min
 Delta R.T.: 0.001 min
 Response: 39151658
 Conc: 21.79 ng/ml

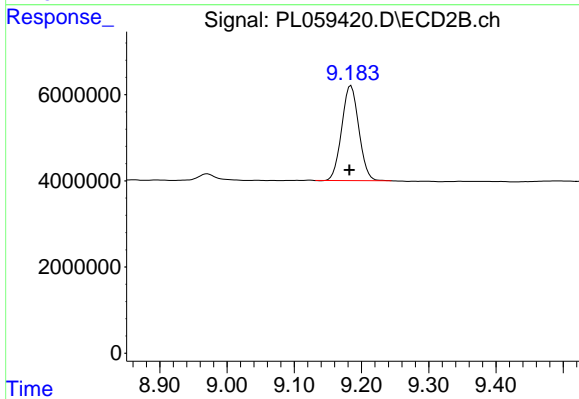
Instrument :
 ECD_L
 ClientSampleId :
 JFK-GW-01-15



#1 Tetrachloro-m-xylene
 R.T.: 4.072 min
 Delta R.T.: 0.000 min
 Response: 55672196
 Conc: 21.57 ng/ml



#28 Decachlorobiphenyl
 R.T.: 8.290 min
 Delta R.T.: 0.001 min
 Response: 28496782
 Conc: 16.74 ng/ml



#28 Decachlorobiphenyl
 R.T.: 9.184 min
 Delta R.T.: 0.002 min
 Response: 38949232
 Conc: 17.01 ng/ml