

Data Path : Z:\pestpcbsrv\HPCHEM1\ECD\_L\Data\PL062220\  
 Data File : PL059439.D  
 Signal(s) : Signal #1: ECD1A.ch Signal #2: ECD2B.ch  
 Acq On : 22 Jun 2020 23:25  
 Operator : AJ\MA  
 Sample : L3082-07  
 Misc :  
 ALS Vial : 39 Sample Multiplier: 1

Instrument :  
 ECD\_L  
 ClientSampleId :  
 SB-8

Integration File signal 1: autoint1.e  
 Integration File signal 2: autoint2.e  
 Quant Time: Jun 23 04:10:03 2020  
 Quant Method : Z:\pestpcbsrv\HPCHEM1\ECD\_L\methods\PL062220.M  
 Quant Title : GC Extractables  
 QLast Update : Mon Jun 22 14:09:48 2020  
 Response via : Initial Calibration  
 Integrator: ChemStation

Volume Inj. : 1 µl  
 Signal #1 Phase : ZB-MR2 Signal #2 Phase: ZB-MR1  
 Signal #1 Info : 30M x 0.32mm x0.2 Signal #2 Info : 30M x 0.32mm x0.5µm

Compound	RT#1	RT#2	Resp#1	Resp#2	ng/ml	ng/ml
-----						
System Monitoring Compounds						
1) SA Tetrachlo...	3.519	4.072	41672927	60888034	23.189	23.591
28) SA Decachlor...	8.290	9.184	36979693	53466263	21.717	23.352

Target Compounds

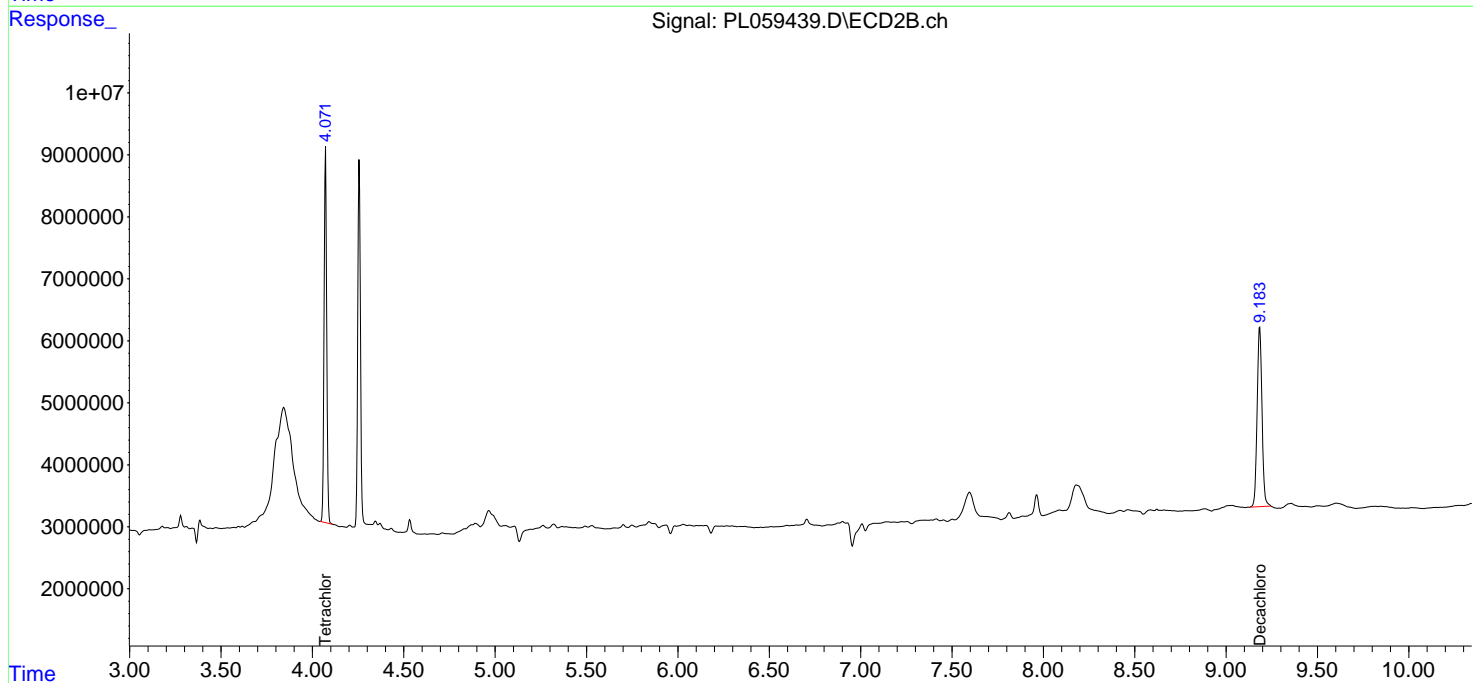
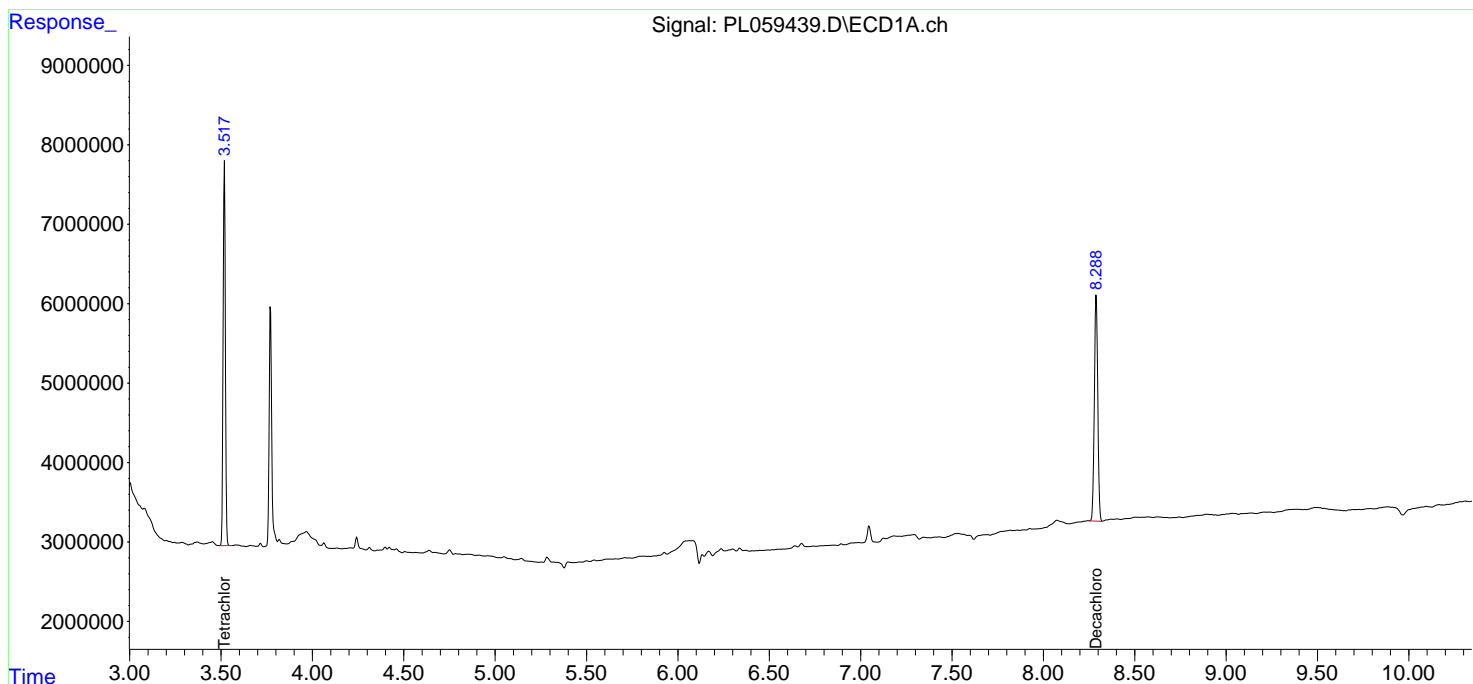
(f)=RT Delta > 1/2 Window (#)=Amounts differ by > 25% (m)=manual int.

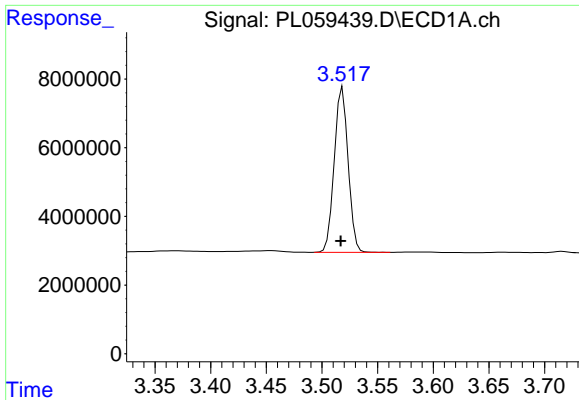
Data Path : Z:\pestpcbsrv\HPCHEM1\ECD\_L\Data\PL062220\  
 Data File : PL059439.D  
 Signal(s) : Signal #1: ECD1A.ch Signal #2: ECD2B.ch  
 Acq On : 22 Jun 2020 23:25  
 Operator : AJ\MA  
 Sample : L3082-07  
 Misc :  
 ALS Vial : 39 Sample Multiplier: 1

Instrument :  
 ECD\_L  
 ClientSampled :  
 SB-8

Integration File signal 1: autoint1.e  
 Integration File signal 2: autoint2.e  
 Quant Time: Jun 23 04:10:03 2020  
 Quant Method : Z:\pestpcbsrv\HPCHEM1\ECD\_L\methods\PL062220.M  
 Quant Title : GC Extractables  
 QLast Update : Mon Jun 22 14:09:48 2020  
 Response via : Initial Calibration  
 Integrator: ChemStation

Volume Inj. : 1 µl  
 Signal #1 Phase : ZB-MR2 Signal #2 Phase: ZB-MR1  
 Signal #1 Info : 30M x 0.32mm x0.2 Signal #2 Info : 30M x 0.32mm x0.5µm

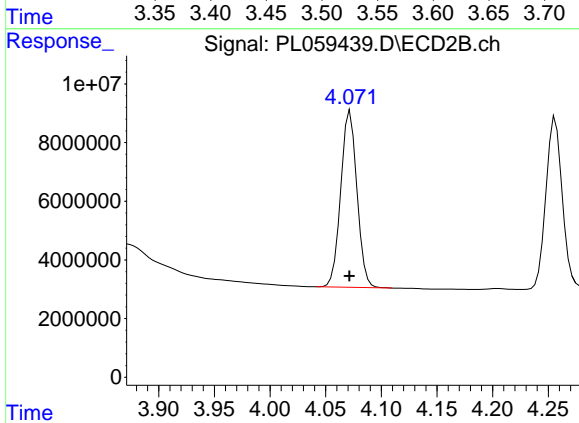




#1 Tetrachloro-m-xylene

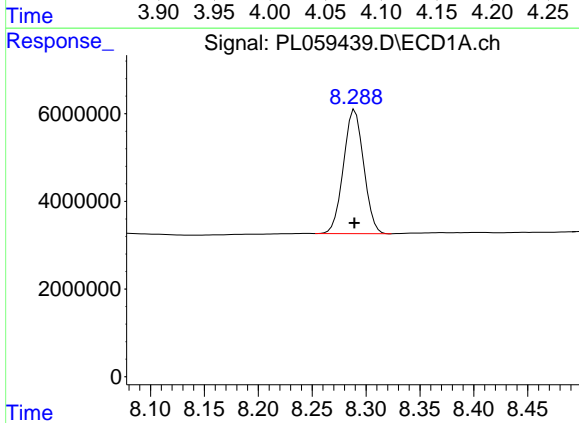
R.T.: 3.519 min  
 Delta R.T.: 0.002 min  
 Response: 41672927  
 Conc: 23.19 ng/ml

Instrument :  
 ECD\_L  
 ClientSampled :  
 SB-8



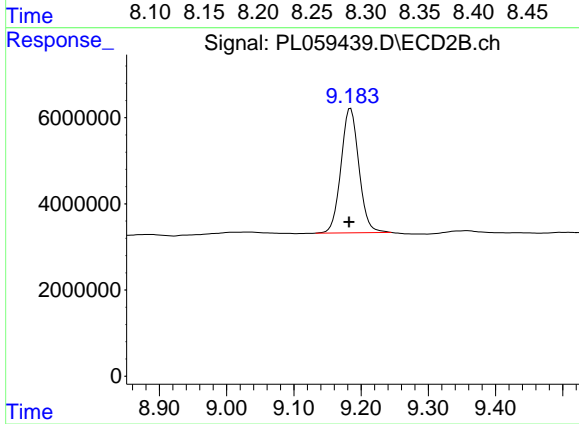
#1 Tetrachloro-m-xylene

R.T.: 4.072 min  
 Delta R.T.: 0.000 min  
 Response: 60888034  
 Conc: 23.59 ng/ml



#28 Decachlorobiphenyl

R.T.: 8.290 min  
 Delta R.T.: 0.000 min  
 Response: 36979693  
 Conc: 21.72 ng/ml



#28 Decachlorobiphenyl

R.T.: 9.184 min  
 Delta R.T.: 0.002 min  
 Response: 53466263  
 Conc: 23.35 ng/ml