

Data Path : Z:\pestpcbsrv\HPCHEM1\ECD_L\Data\PL062220\
 Data File : PL059440.D
 Signal(s) : Signal #1: ECD1A.ch Signal #2: ECD2B.ch
 Acq On : 22 Jun 2020 23:39
 Operator : AJ\MA
 Sample : L3082-06
 Misc :
 ALS Vial : 40 Sample Multiplier: 1

Instrument :
 ECD_L
ClientSampled :
 SB-7

Manual Integrations
APPROVED
 mohammad
 6/24/2020 11:44:38 AM

Integration File signal 1: autoint1.e
 Integration File signal 2: autoint2.e
 Quant Time: Jun 23 04:10:16 2020
 Quant Method : Z:\pestpcbsrv\HPCHEM1\ECD_L\methods\PL062220.M
 Quant Title : GC Extractables
 QLast Update : Mon Jun 22 14:09:48 2020
 Response via : Initial Calibration
 Integrator: ChemStation

Volume Inj. : 1 µl
 Signal #1 Phase : ZB-MR2 Signal #2 Phase: ZB-MR1
 Signal #1 Info : 30M x 0.32mm x0.2 Signal #2 Info : 30M x 0.32mm x0.5µm

Compound	RT#1	RT#2	Resp#1	Resp#2	ng/ml	ng/ml

System Monitoring Compounds						
1) SA Tetrachlo...	3.518	4.072	39781583	58007880	22.136	22.475
28) SA Decachlor...	8.290	9.183	36058505	48075893	21.176	20.997m

Target Compounds

(f)=RT Delta > 1/2 Window (#)=Amounts differ by > 25% (m)=manual int.

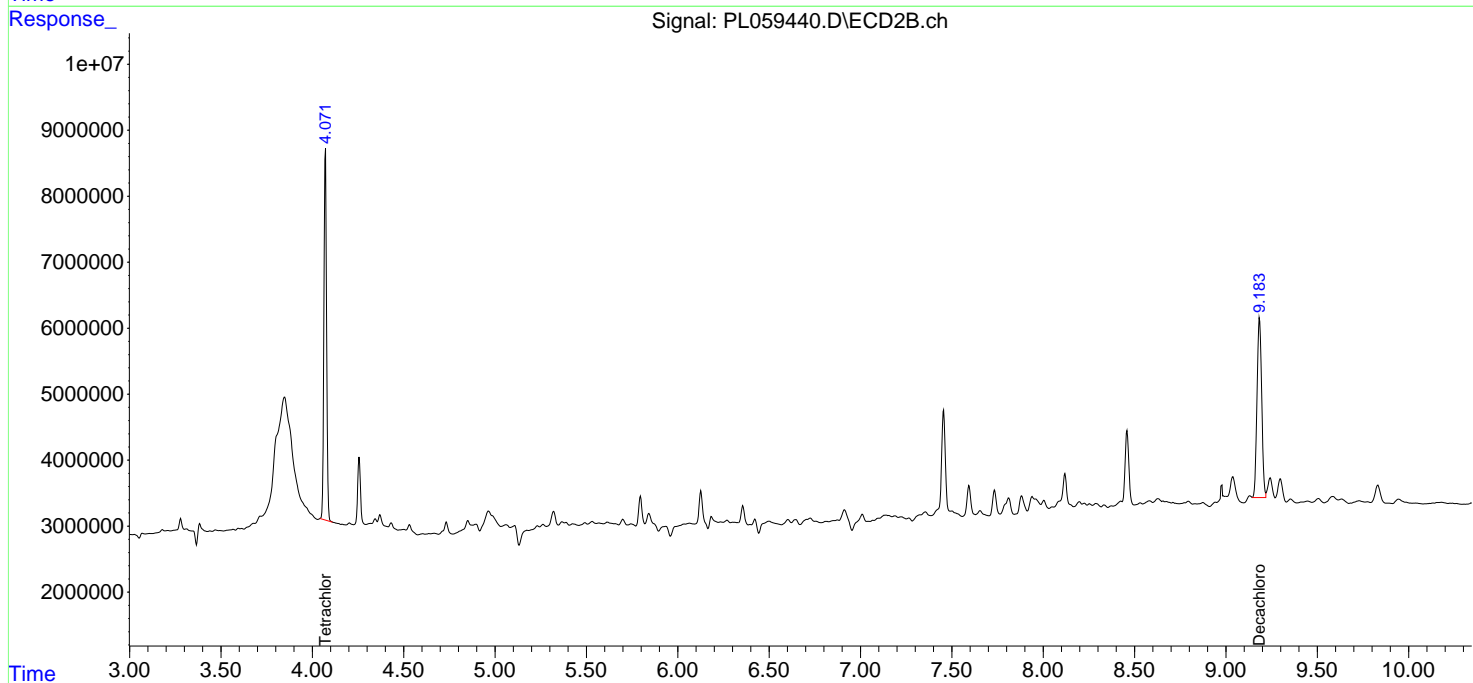
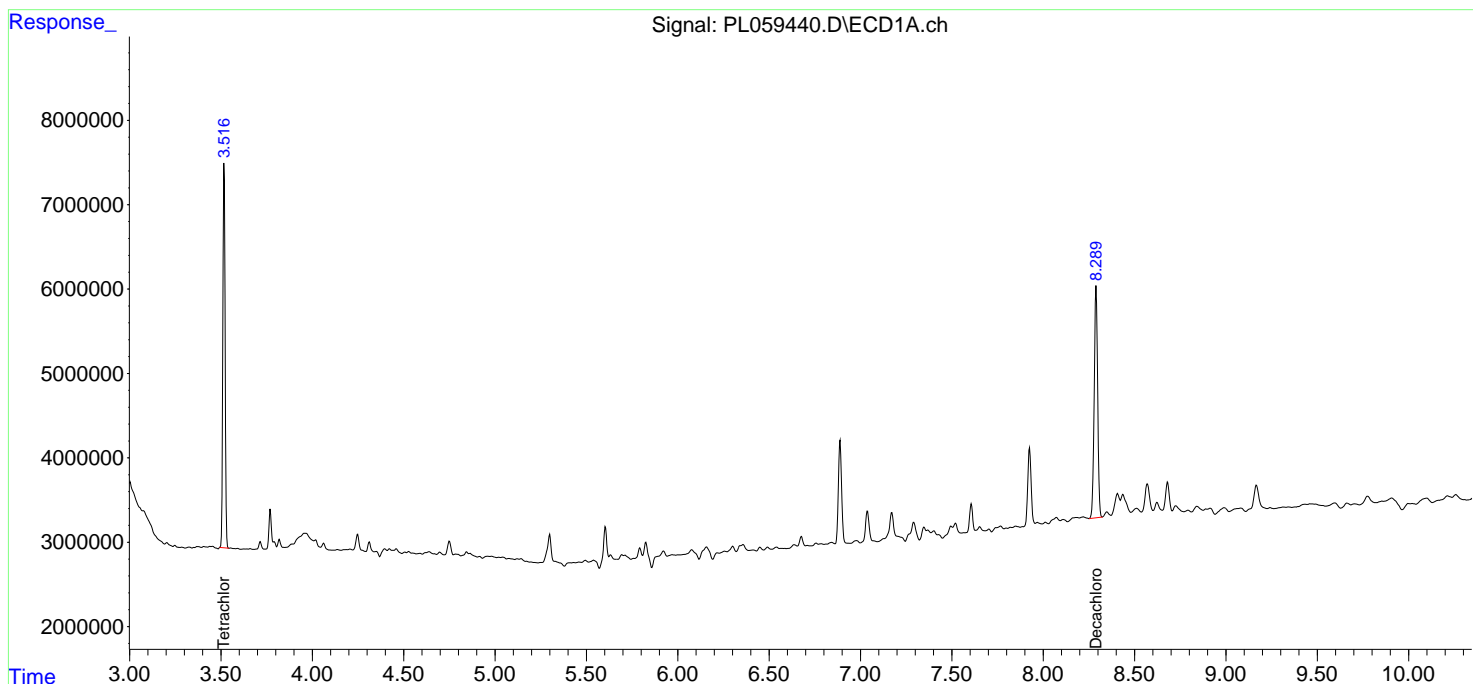
Data Path : Z:\pestpcbsrv\HPCHEM1\ECD_L\Data\PL062220\
 Data File : PL059440.D
 Signal(s) : Signal #1: ECD1A.ch Signal #2: ECD2B.ch
 Acq On : 22 Jun 2020 23:39
 Operator : AJ\MA
 Sample : L3082-06
 Misc :
 ALS Vial : 40 Sample Multiplier: 1

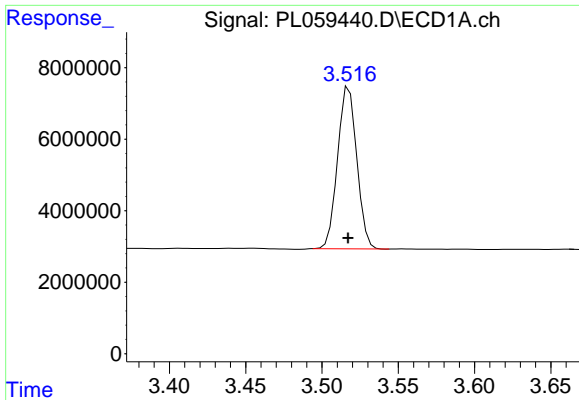
Instrument :
 ECD_L
Client Sampled :
 SB-7

Manual Integrations
APPROVED
 mohammad
 6/24/2020 11:44:38 AM

Integration File signal 1: autoint1.e
 Integration File signal 2: autoint2.e
 Quant Time: Jun 23 04:10:16 2020
 Quant Method : Z:\pestpcbsrv\HPCHEM1\ECD_L\methods\PL062220.M
 Quant Title : GC Extractables
 QLast Update : Mon Jun 22 14:09:48 2020
 Response via : Initial Calibration
 Integrator: ChemStation

Volume Inj. : 1 µl
 Signal #1 Phase : ZB-MR2 Signal #2 Phase: ZB-MR1
 Signal #1 Info : 30M x 0.32mm x0.2 Signal #2 Info : 30M x 0.32mm x0.5µm

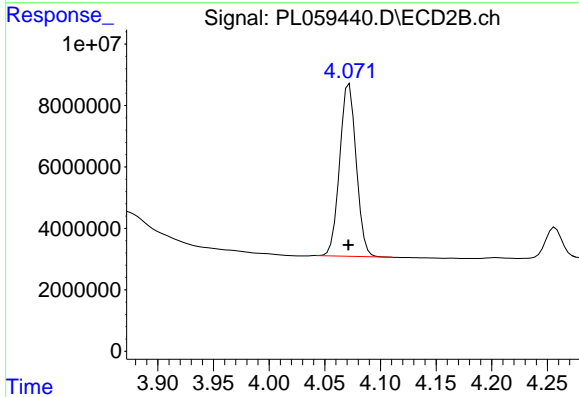




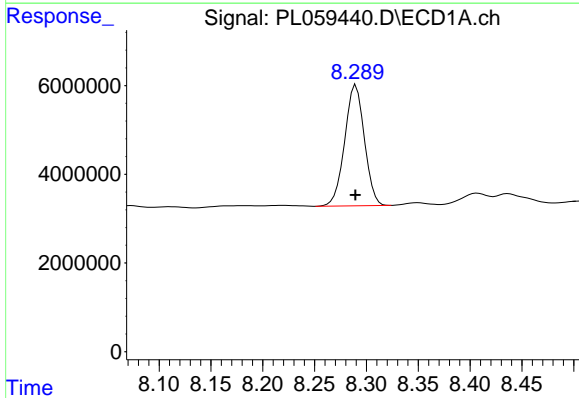
#1 Tetrachloro-m-xylene
 R.T.: 3.518 min
 Delta R.T.: 0.000 min
 Response: 39781583
 Conc: 22.14 ng/ml

Instrument :
 ECD_L
 ClientSampled :
 SB-7

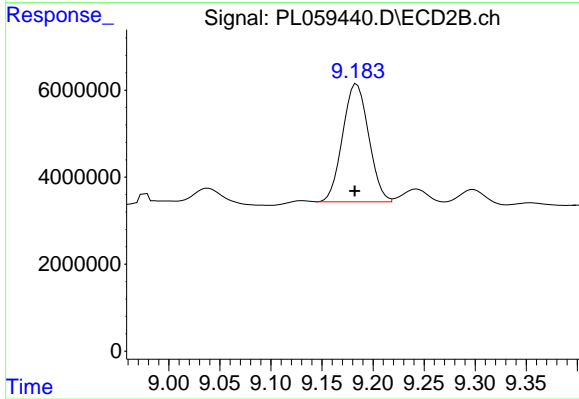
Manual Integrations
 APPROVED
 mohammad
 6/24/2020 11:44:38 AM



#1 Tetrachloro-m-xylene
 R.T.: 4.072 min
 Delta R.T.: 0.000 min
 Response: 58007880
 Conc: 22.48 ng/ml



#28 Decachlorobiphenyl
 R.T.: 8.290 min
 Delta R.T.: 0.000 min
 Response: 36058505
 Conc: 21.18 ng/ml



#28 Decachlorobiphenyl
 R.T.: 9.183 min
 Delta R.T.: 0.000 min
 Response: 48075893
 Conc: 21.00 ng/ml m