

Data Path : Z:\pestpcbsrv\HPCHEM1\ECD\_L\Data\PL062220\  
 Data File : PL059441.D  
 Signal(s) : Signal #1: ECD1A.ch Signal #2: ECD2B.ch  
 Acq On : 22 Jun 2020 23:53  
 Operator : AJ\MA  
 Sample : L3082-05  
 Misc :  
 ALS Vial : 41 Sample Multiplier: 1

**Instrument :**  
 ECD\_L  
**ClientSampled :**  
 SB-5

**Manual Integrations**  
**APPROVED**  
 mohammad  
 6/24/2020 11:44:41 AM

Integration File signal 1: autoint1.e  
 Integration File signal 2: autoint2.e  
 Quant Time: Jun 23 04:10:30 2020  
 Quant Method : Z:\pestpcbsrv\HPCHEM1\ECD\_L\methods\PL062220.M  
 Quant Title : GC Extractables  
 QLast Update : Mon Jun 22 14:09:48 2020  
 Response via : Initial Calibration  
 Integrator: ChemStation

Volume Inj. : 1 µl  
 Signal #1 Phase : ZB-MR2 Signal #2 Phase: ZB-MR1  
 Signal #1 Info : 30M x 0.32mm x0.2 Signal #2 Info : 30M x 0.32mm x0.5µm

Compound	RT#1	RT#2	Resp#1	Resp#2	ng/ml	ng/ml
-----						
System Monitoring Compounds						
1) SA Tetrachlo...	3.518	4.072	41512966	60204259	23.100	23.326
28) SA Decachlor...	8.290	9.182	34639832	49154720	20.343	21.469m

Target Compounds  
 -----

(f)=RT Delta > 1/2 Window (#)=Amounts differ by > 25% (m)=manual int.

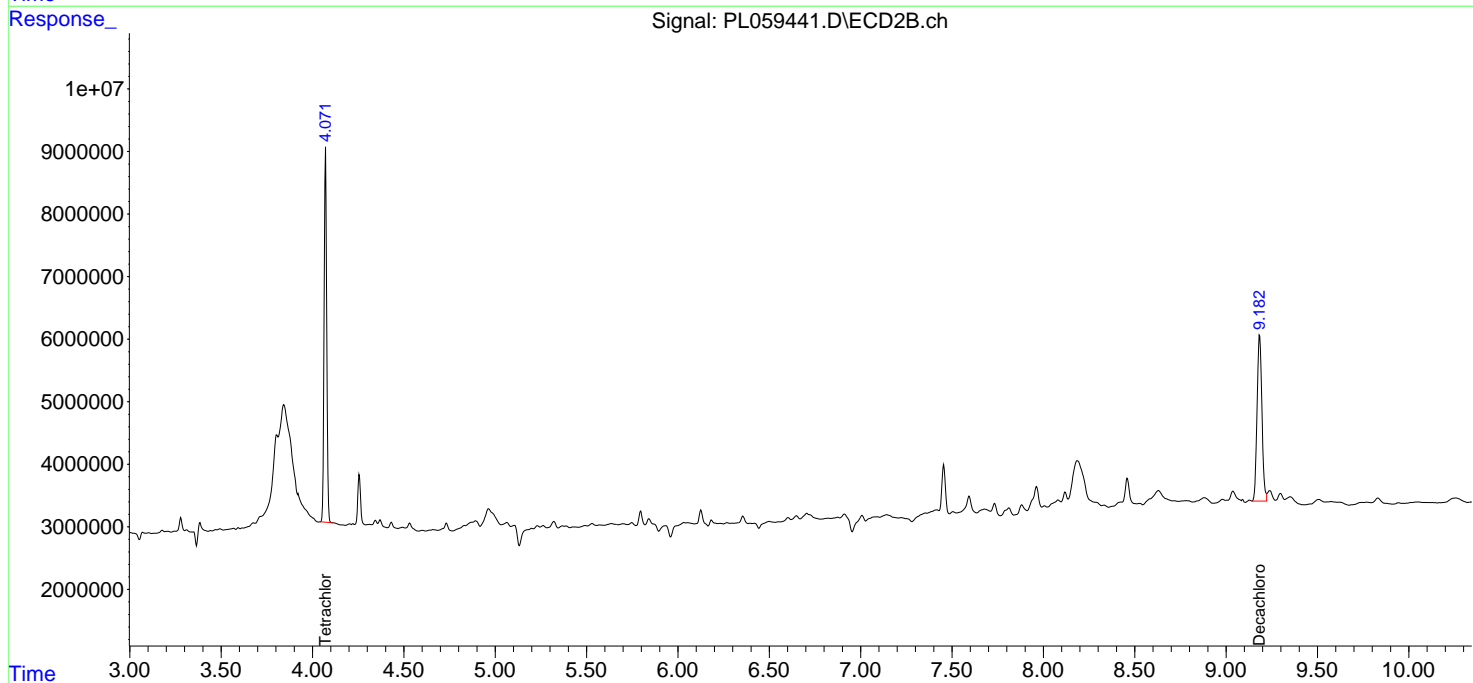
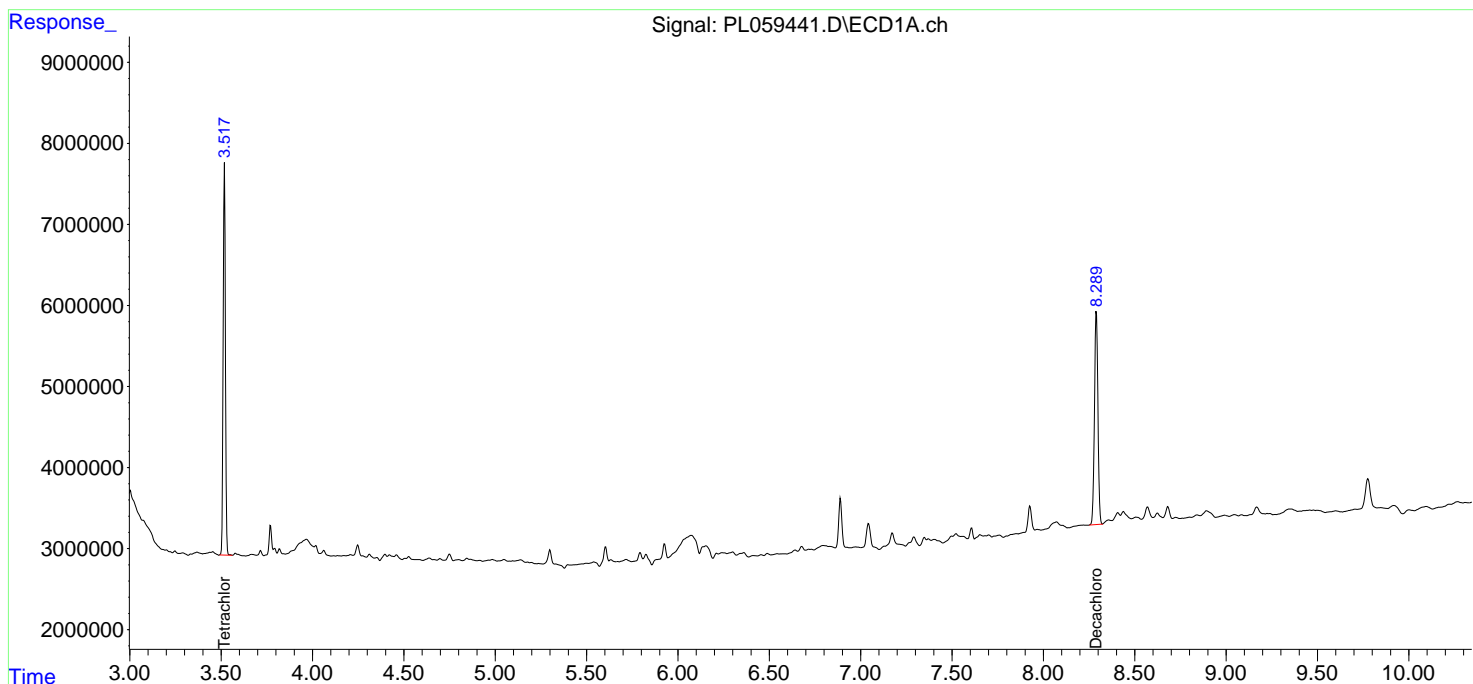
Data Path : Z:\pestpcbsrv\HPCHEM1\ECD\_L\Data\PL062220\  
 Data File : PL059441.D  
 Signal(s) : Signal #1: ECD1A.ch Signal #2: ECD2B.ch  
 Acq On : 22 Jun 2020 23:53  
 Operator : AJ\MA  
 Sample : L3082-05  
 Misc :  
 ALS Vial : 41 Sample Multiplier: 1

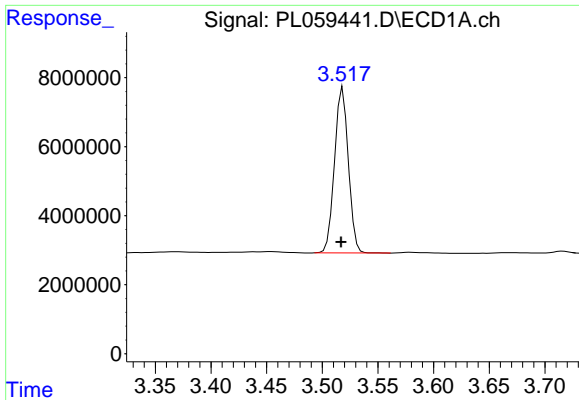
**Instrument :**  
 ECD\_L  
**ClientSampled :**  
 SB-5

**Manual Integrations**  
**APPROVED**  
 mohammad  
 6/24/2020 11:44:41 AM

Integration File signal 1: autoint1.e  
 Integration File signal 2: autoint2.e  
 Quant Time: Jun 23 04:10:30 2020  
 Quant Method : Z:\pestpcbsrv\HPCHEM1\ECD\_L\methods\PL062220.M  
 Quant Title : GC Extractables  
 QLast Update : Mon Jun 22 14:09:48 2020  
 Response via : Initial Calibration  
 Integrator: ChemStation

Volume Inj. : 1 µl  
 Signal #1 Phase : ZB-MR2 Signal #2 Phase: ZB-MR1  
 Signal #1 Info : 30M x 0.32mm x0.2 Signal #2 Info : 30M x 0.32mm x0.5µm

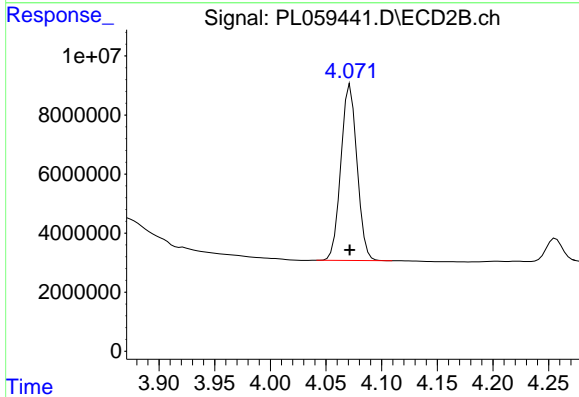




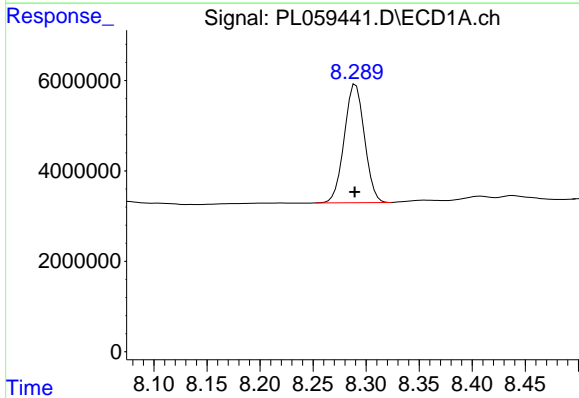
#1 Tetrachloro-m-xylene  
 R.T.: 3.518 min  
 Delta R.T.: 0.001 min  
 Response: 41512966  
 Conc: 23.10 ng/ml

Instrument :  
 ECD\_L  
 ClientSampled :  
 SB-5

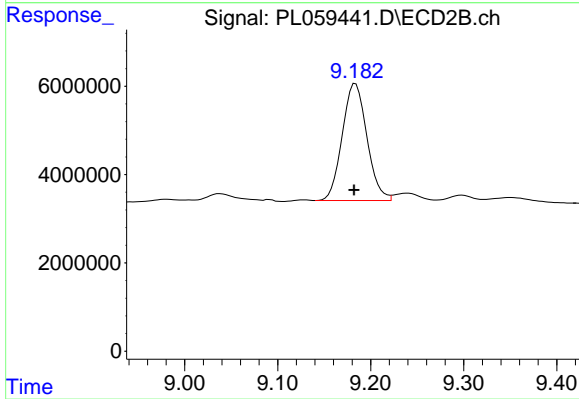
Manual Integrations  
 APPROVED  
 mohammad  
 6/24/2020 11:44:41 AM



#1 Tetrachloro-m-xylene  
 R.T.: 4.072 min  
 Delta R.T.: 0.000 min  
 Response: 60204259  
 Conc: 23.33 ng/ml



#28 Decachlorobiphenyl  
 R.T.: 8.290 min  
 Delta R.T.: 0.000 min  
 Response: 34639832  
 Conc: 20.34 ng/ml



#28 Decachlorobiphenyl  
 R.T.: 9.182 min  
 Delta R.T.: 0.000 min  
 Response: 49154720  
 Conc: 21.47 ng/ml m