

Data Path : Z:\pestpcbsrv\HPCHEM1\ECD_L\Data\PL010623\
 Data File : PL080141.D
 Signal(s) : Signal #1: ECD1A.ch Signal #2: ECD2B.ch
 Acq On : 06 Jan 2023 12:36
 Operator : AR\AJ
 Sample : PB150085BL
 Misc :
 ALS Vial : 5 Sample Multiplier: 1

Instrument :
 ECD_L
 ClientSampleId :

Integration File signal 1: autoint1.e
 Integration File signal 2: autoint2.e
 Quant Time: Jan 06 20:51:41 2023
 Quant Method : Z:\pestpcbsrv\HPCHEM1\ECD_L\methods\PL010423.M
 Quant Title : GC Extractables
 QLast Update : Thu Jan 05 05:11:24 2023
 Response via : Initial Calibration
 Integrator: ChemStation

Volume Inj. : 1 µl
 Signal #1 Phase : ZB-MR2 Signal #2 Phase: ZB-MR1
 Signal #1 Info : 30M x 0.32mm x0.2 Signal #2 Info : 30M x 0.32mm x0.5µm

	Compound	RT#1	RT#2	Resp#1	Resp#2	ng/ml	ng/ml

System Monitoring Compounds							
1)	SA Tetrachlo...	3.379	2.692	38006202	38351725	19.107	16.867
28)	SA Decachlor...	8.903	7.847	32929074	42651672	19.192	18.878
Target Compounds							
2)	A alpha-BHC	0.000	3.191	0	59721	N.D.	0.018 #
3)	MA gamma-BHC...	0.000	3.498f	0	163318	N.D.	0.053 #
5)	MB Aldrin	0.000	4.156	0	281877	N.D.	0.096 #
7)	B delta-BHC	0.000	4.067f	0	351395	N.D.	0.120 #
8)	B Heptachlo...	0.000	4.645	0	41047	N.D.	0.015 #
9)	A Endosulfan I	5.920f	5.017	438447	111718	0.256	0.043 #
10)	B gamma-Chl...	0.000	4.896	0	307490	N.D.	0.110 #
11)	B alpha-Chl...	0.000	4.962	0	155723	N.D.	0.056 #
12)	B 4,4'-DDE	6.037	5.172	124037	62240	0.079	0.027 #
13)	MA Dieldrin	6.192f	5.279	377179	75462	0.220	0.029 #
15)	B Endosulfa...	6.636	5.865	616729	8828	0.401	0.004 #
17)	MA 4,4'-DDT	0.000	5.961	0	225504	N.D.	0.111 #
18)	B Endrin al...	6.755	6.026	76641	30582	0.063	0.017 #
19)	B Endosulfa...	0.000	6.266	0	40087	N.D.	0.018 #
20)	A Methoxychlor	7.374	6.538	109187	11501	0.123	0.010 #
21)	B Endrin ke...	0.000	6.784f	0	438930	N.D.	0.180 #
22)	Mirex	7.961	0.000	88820	0	0.057	N.D. #
23)	Chlordane-1	0.000	3.722f	0	433391	N.D.	5.567 #
24)	Chlordane-2	0.000	4.286f	0	450	N.D.	0.005 #
25)	Chlordane-3	0.000	4.896	0	307490	N.D.	1.175 #
26)	Chlordane-4	0.000	4.962	0	155723	N.D.	0.592 #
27)	Chlordane-5	6.708	5.651f	2069751	504414	32.359	6.856 #

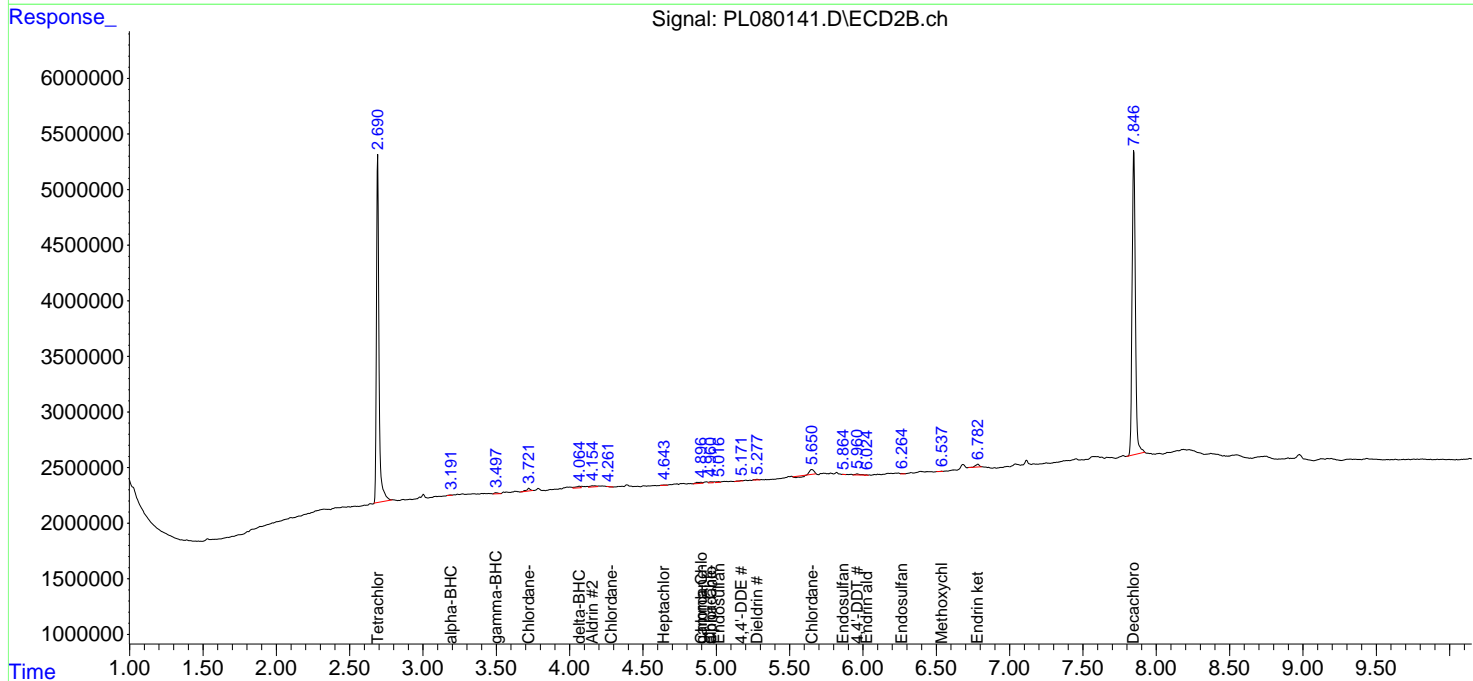
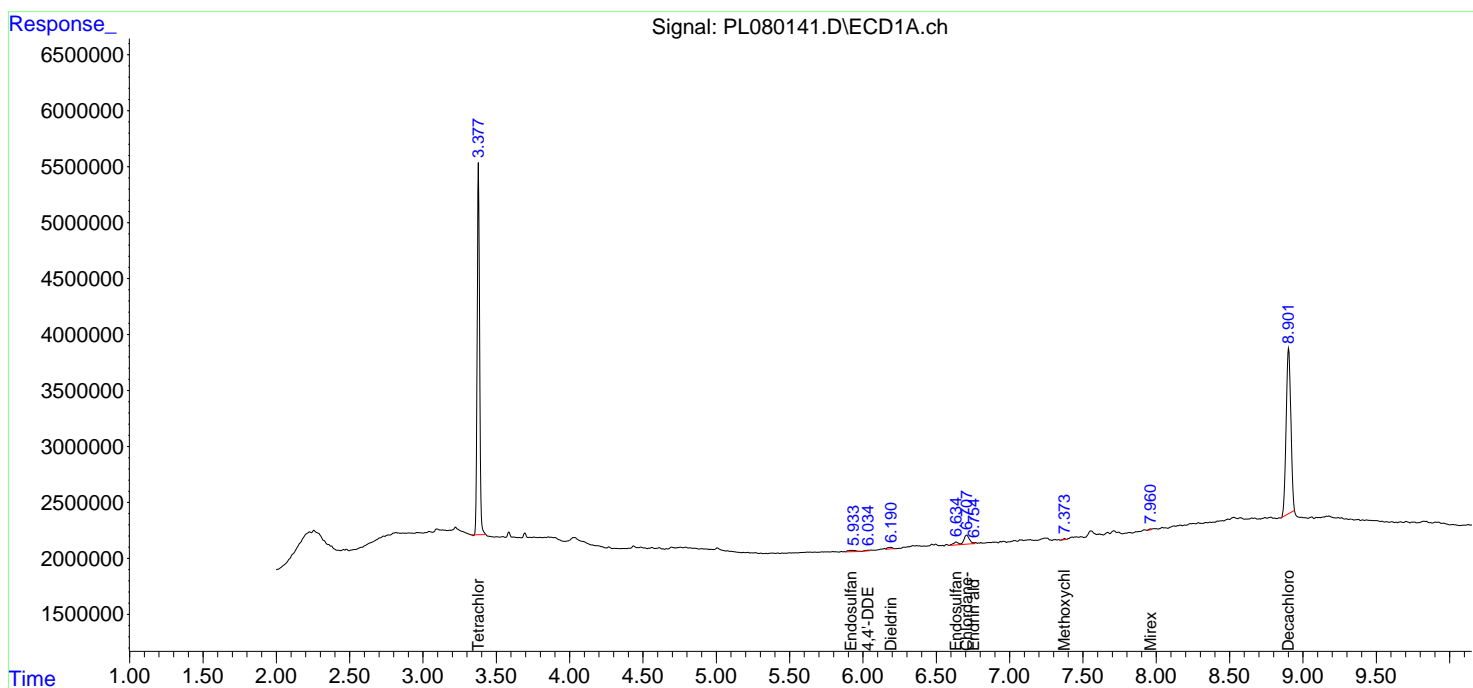
(f)=RT Delta > 1/2 Window (#)=Amounts differ by > 25% (m)=manual int.

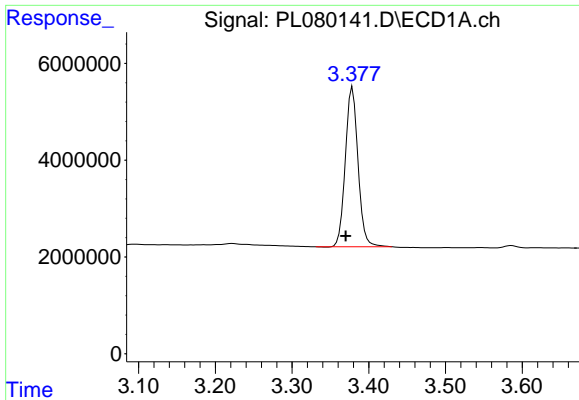
Data Path : Z:\pestpcbsrv\HPCHEM1\ECD_L\Data\PL010623\
 Data File : PL080141.D
 Signal(s) : Signal #1: ECD1A.ch Signal #2: ECD2B.ch
 Acq On : 06 Jan 2023 12:36
 Operator : AR\AJ
 Sample : PB150085BL
 Misc :
 ALS Vial : 5 Sample Multiplier: 1

Instrument :
 ECD_L
 ClientSampleId :

Integration File signal 1: autoint1.e
 Integration File signal 2: autoint2.e
 Quant Time: Jan 06 20:51:41 2023
 Quant Method : Z:\pestpcbsrv\HPCHEM1\ECD_L\methods\PL010423.M
 Quant Title : GC Extractables
 QLast Update : Thu Jan 05 05:11:24 2023
 Response via : Initial Calibration
 Integrator: ChemStation

Volume Inj. : 1 µl
 Signal #1 Phase : ZB-MR2 Signal #2 Phase: ZB-MR1
 Signal #1 Info : 30M x 0.32mm x0.2 Signal #2 Info : 30M x 0.32mm x0.5µm

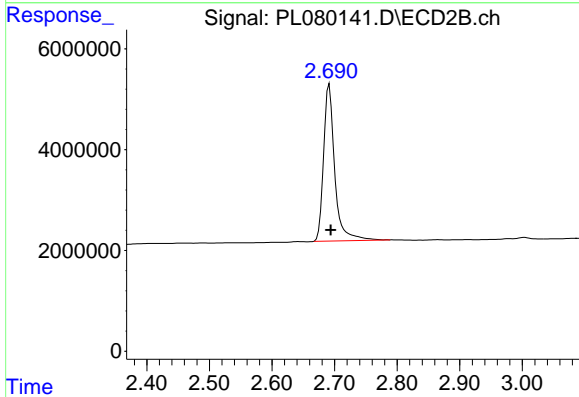




#1 Tetrachloro-m-xylene

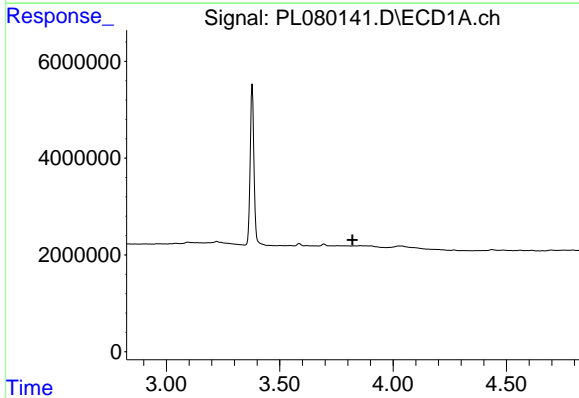
R.T.: 3.379 min
 Delta R.T.: 0.009 min
 Response: 38006202
 Conc: 19.11 ng/ml

Instrument :
 ECD_L
 ClientSampleId :



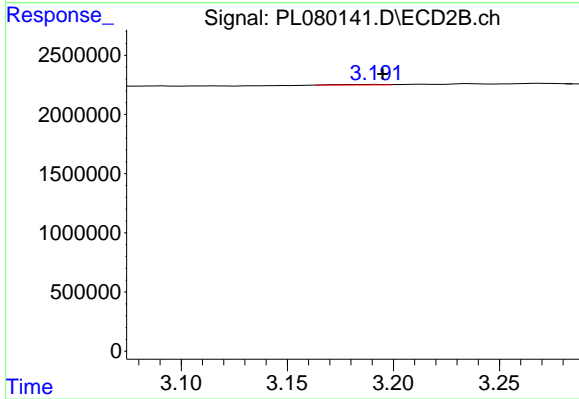
#1 Tetrachloro-m-xylene

R.T.: 2.692 min
 Delta R.T.: -0.002 min
 Response: 38351725
 Conc: 16.87 ng/ml



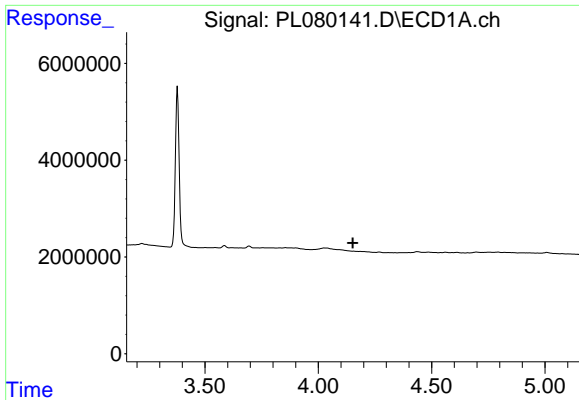
#2 alpha-BHC

R.T.: 0.000 min
 Exp R.T. : 3.821 min
 Response: 0
 Conc: N.D.



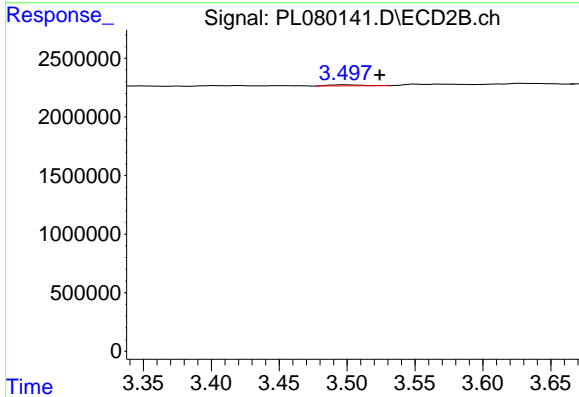
#2 alpha-BHC

R.T.: 3.191 min
 Delta R.T.: -0.004 min
 Response: 59721
 Conc: 0.02 ng/ml

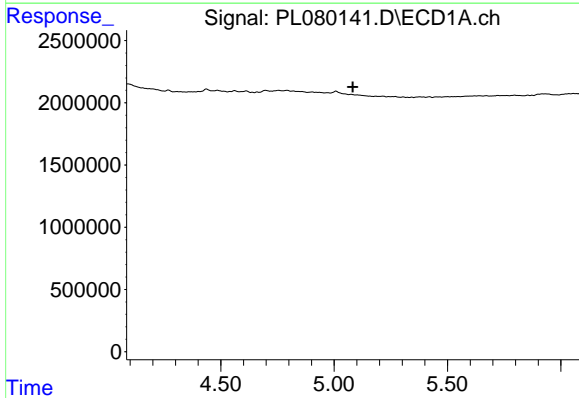


#3 gamma-BHC (Lindane)
 R.T.: 0.000 min
 Exp R.T.: 4.152 min
 Response: 0
 Conc: N.D.

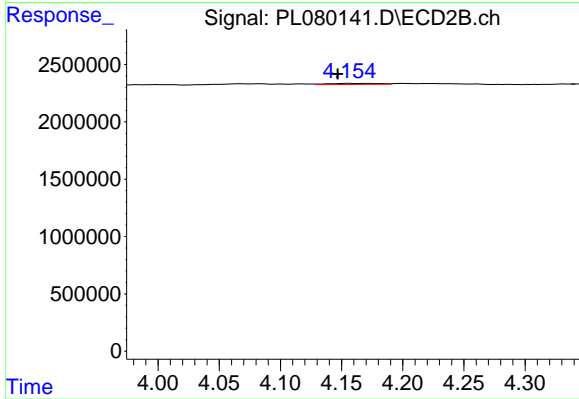
Instrument :
 ECD_L
 ClientSampleId :



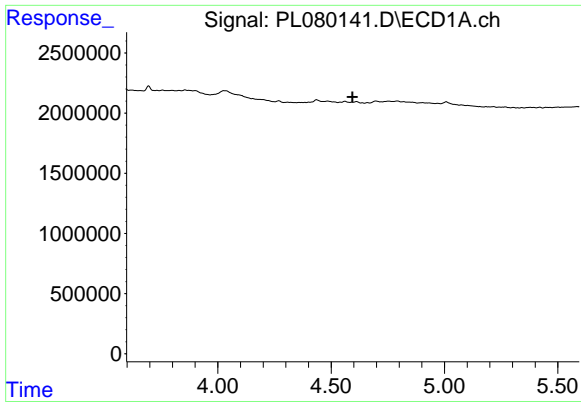
#3 gamma-BHC (Lindane)
 R.T.: 3.498 min
 Delta R.T.: -0.026 min
 Response: 163318
 Conc: 0.05 ng/ml



#5 Aldrin
 R.T.: 0.000 min
 Exp R.T.: 5.082 min
 Response: 0
 Conc: N.D.



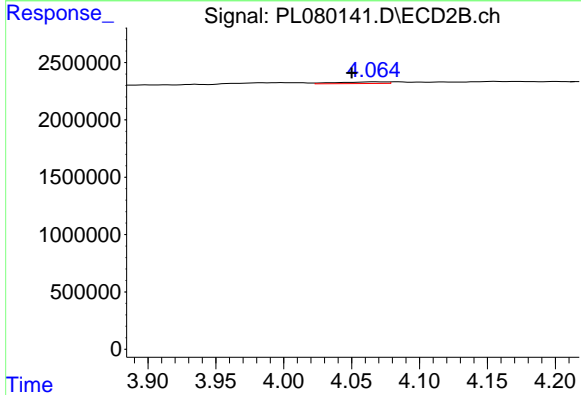
#5 Aldrin
 R.T.: 4.156 min
 Delta R.T.: 0.009 min
 Response: 281877
 Conc: 0.10 ng/ml



#7 delta-BHC

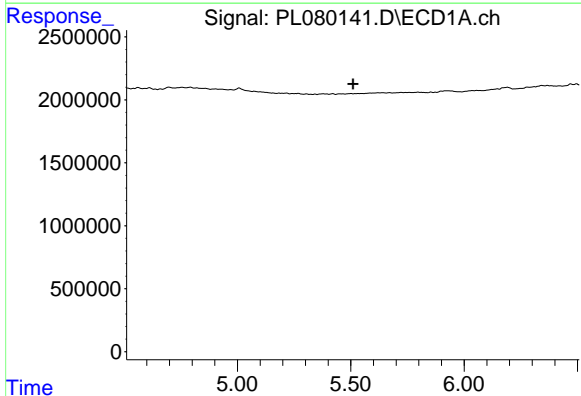
R.T.: 0.000 min
 Exp R.T.: 4.595 min
 Response: 0
 Conc: N.D.

Instrument :
 ECD_L
 ClientSampleId :



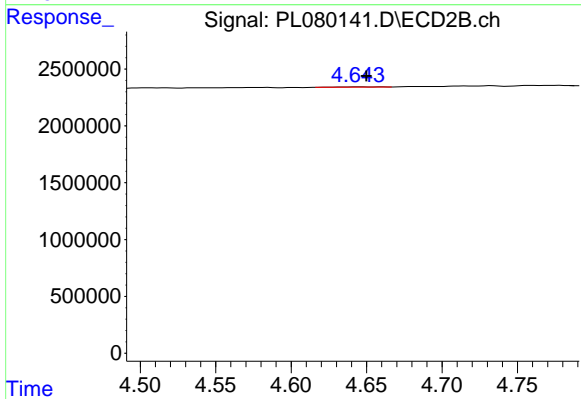
#7 delta-BHC

R.T.: 4.067 min
 Delta R.T.: 0.016 min
 Response: 351395
 Conc: 0.12 ng/ml



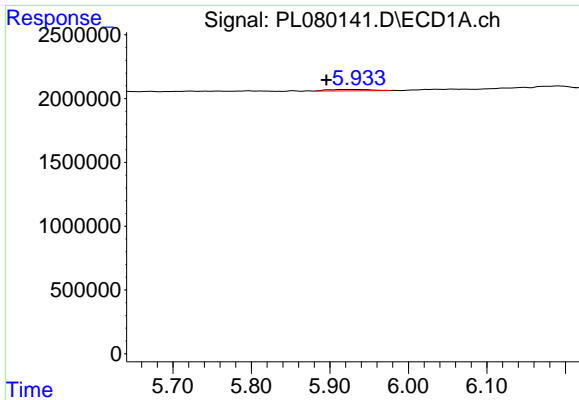
#8 Heptachlor epoxide

R.T.: 0.000 min
 Exp R.T.: 5.511 min
 Response: 0
 Conc: N.D.



#8 Heptachlor epoxide

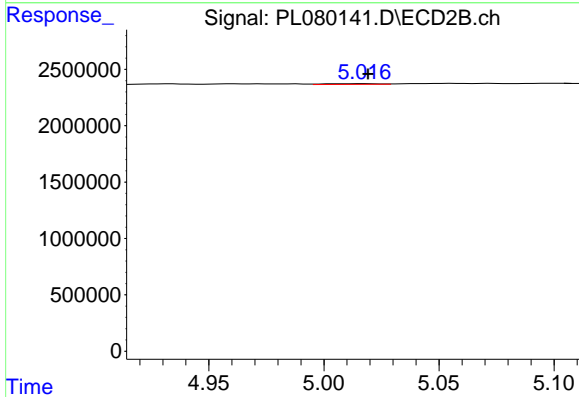
R.T.: 4.645 min
 Delta R.T.: -0.005 min
 Response: 41047
 Conc: 0.01 ng/ml



#9 Endosulfan I

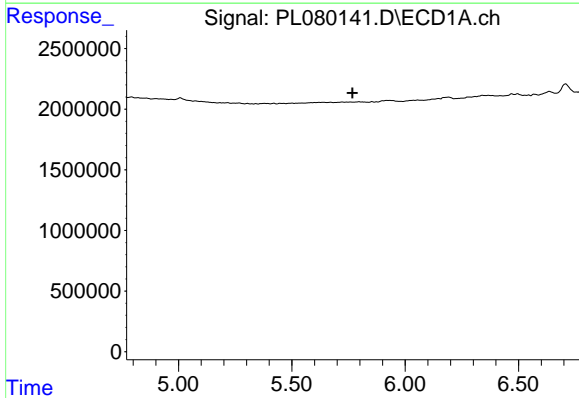
R.T.: 5.920 min
 Delta R.T.: 0.024 min
 Response: 438447
 Conc: 0.26 ng/ml

Instrument :
 ECD_L
 ClientSampleId :



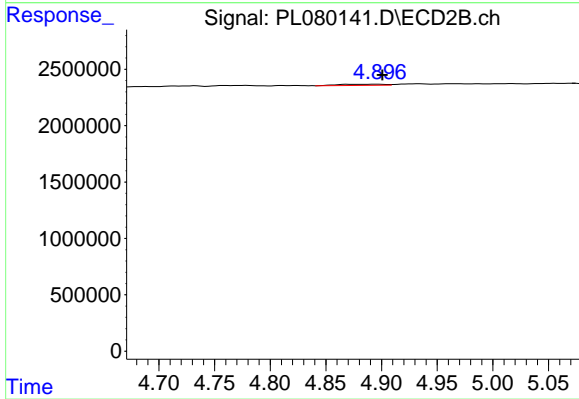
#9 Endosulfan I

R.T.: 5.017 min
 Delta R.T.: -0.002 min
 Response: 111718
 Conc: 0.04 ng/ml



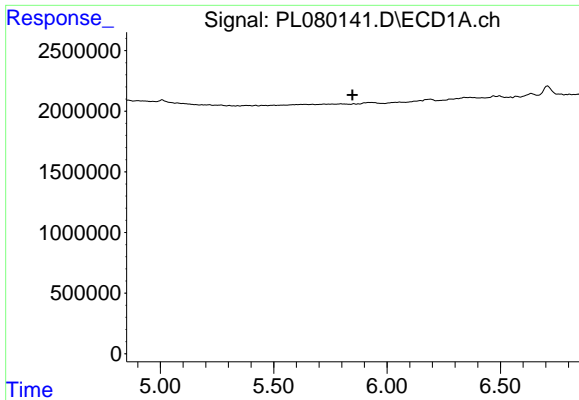
#10 gamma-Chlordane

R.T.: 0.000 min
 Exp R.T. : 5.768 min
 Response: 0
 Conc: N.D.



#10 gamma-Chlordane

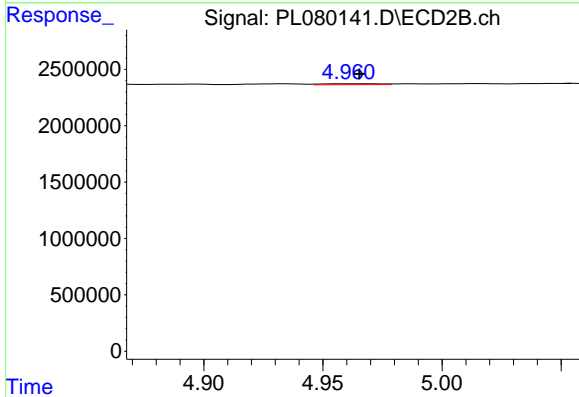
R.T.: 4.896 min
 Delta R.T.: -0.004 min
 Response: 307490
 Conc: 0.11 ng/ml



#11 alpha-Chlordane

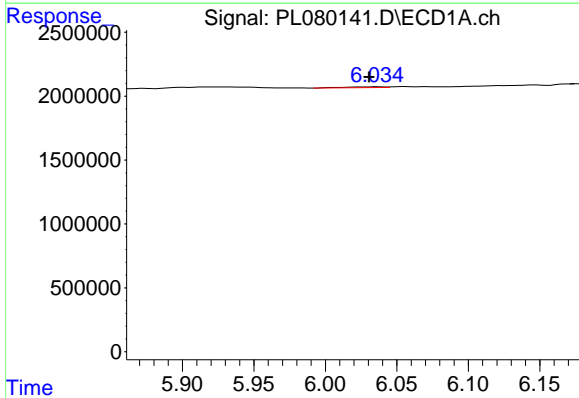
R.T.: 0.000 min
 Exp R.T.: 5.848 min
 Response: 0
 Conc: N.D.

Instrument :
 ECD_L
 ClientSampleId :



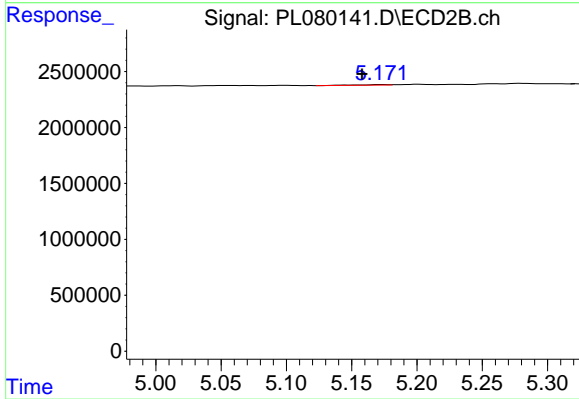
#11 alpha-Chlordane

R.T.: 4.962 min
 Delta R.T.: -0.004 min
 Response: 155723
 Conc: 0.06 ng/ml



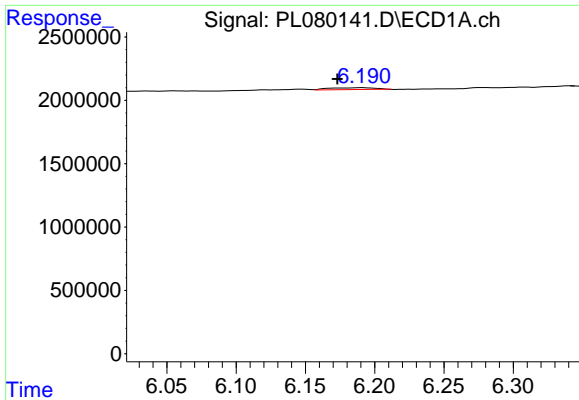
#12 4,4'-DDE

R.T.: 6.037 min
 Delta R.T.: 0.006 min
 Response: 124037
 Conc: 0.08 ng/ml



#12 4,4'-DDE

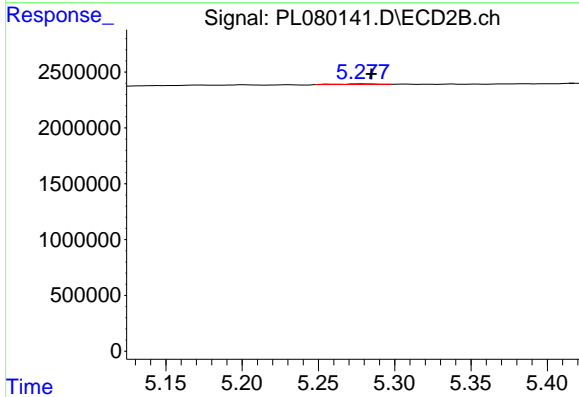
R.T.: 5.172 min
 Delta R.T.: 0.014 min
 Response: 62240
 Conc: 0.03 ng/ml



#13 Dieldrin

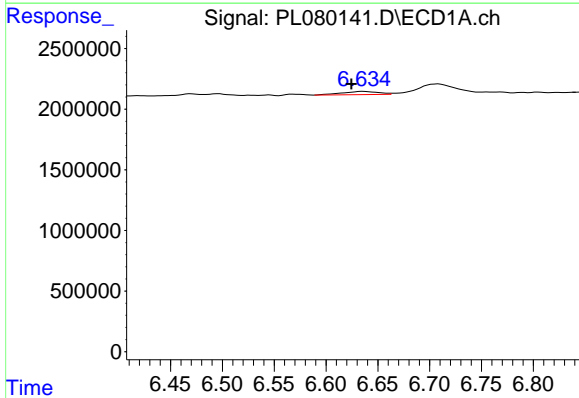
R.T.: 6.192 min
 Delta R.T.: 0.018 min
 Response: 377179
 Conc: 0.22 ng/ml

Instrument :
 ECD_L
 ClientSampleId :



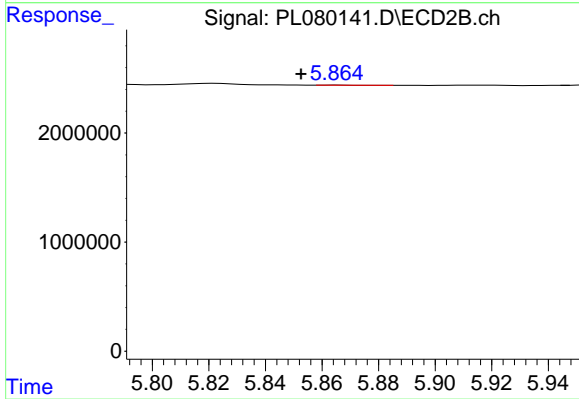
#13 Dieldrin

R.T.: 5.279 min
 Delta R.T.: -0.006 min
 Response: 75462
 Conc: 0.03 ng/ml



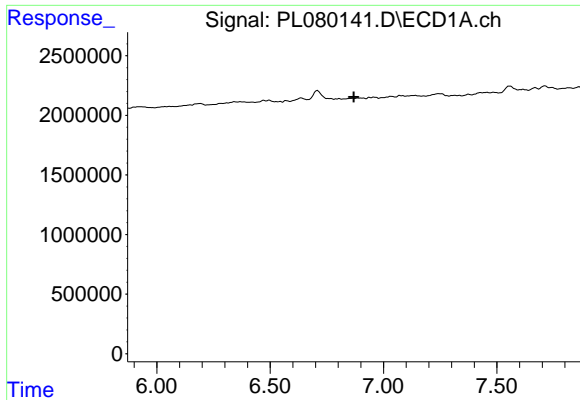
#15 Endosulfan II

R.T.: 6.636 min
 Delta R.T.: 0.012 min
 Response: 616729
 Conc: 0.40 ng/ml



#15 Endosulfan II

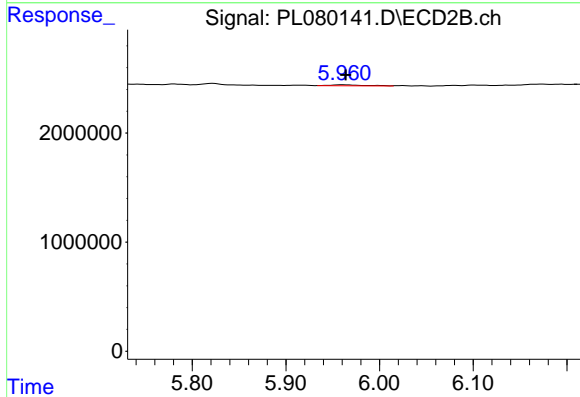
R.T.: 5.865 min
 Delta R.T.: 0.012 min
 Response: 8828
 Conc: 0.00 ng/ml



#17 4,4'-DDT

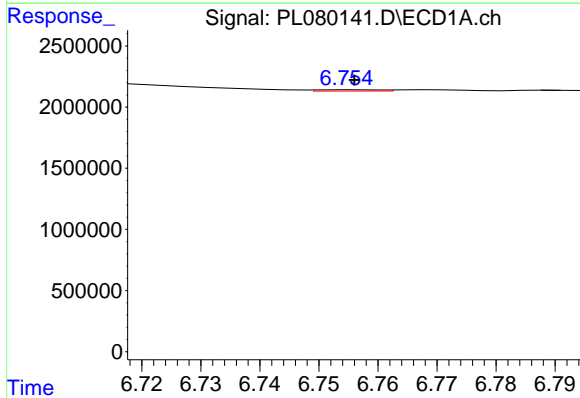
R.T.: 0.000 min
 Exp R.T.: 6.869 min
 Response: 0
 Conc: N.D.

Instrument :
 ECD_L
 ClientSampleId :



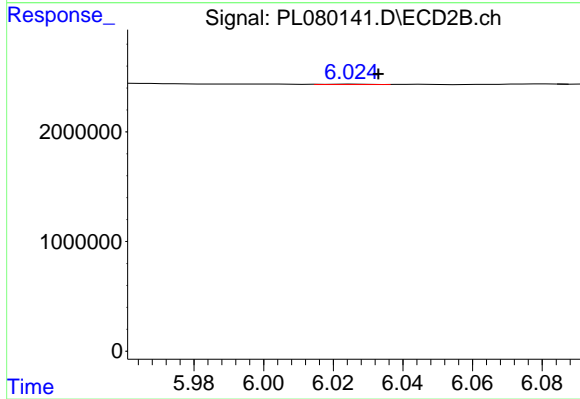
#17 4,4'-DDT

R.T.: 5.961 min
 Delta R.T.: -0.003 min
 Response: 225504
 Conc: 0.11 ng/ml



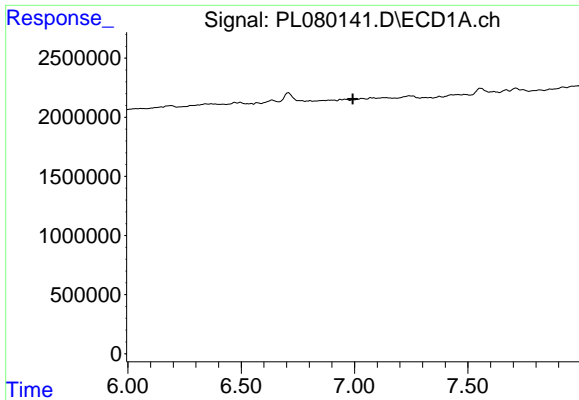
#18 Endrin aldehyde

R.T.: 6.755 min
 Delta R.T.: 0.000 min
 Response: 76641
 Conc: 0.06 ng/ml



#18 Endrin aldehyde

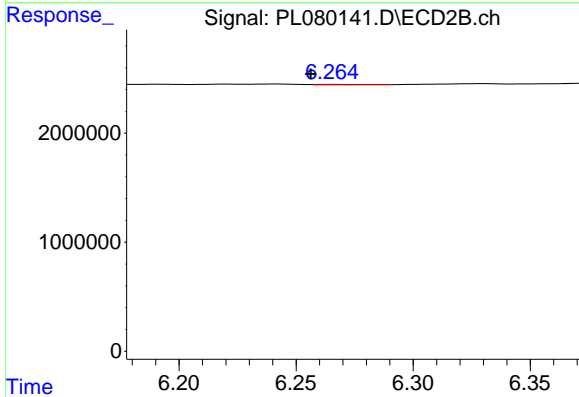
R.T.: 6.026 min
 Delta R.T.: -0.007 min
 Response: 30582
 Conc: 0.02 ng/ml



#19 Endosulfan Sulfate

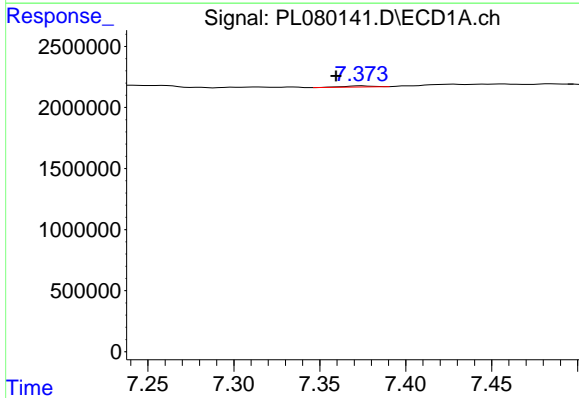
R.T.: 0.000 min
 Exp R.T.: 6.993 min
 Response: 0
 Conc: N.D.

Instrument :
 ECD_L
 ClientSampleId :



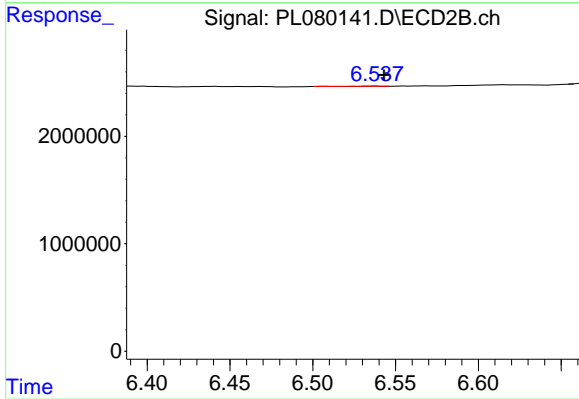
#19 Endosulfan Sulfate

R.T.: 6.266 min
 Delta R.T.: 0.010 min
 Response: 40087
 Conc: 0.02 ng/ml



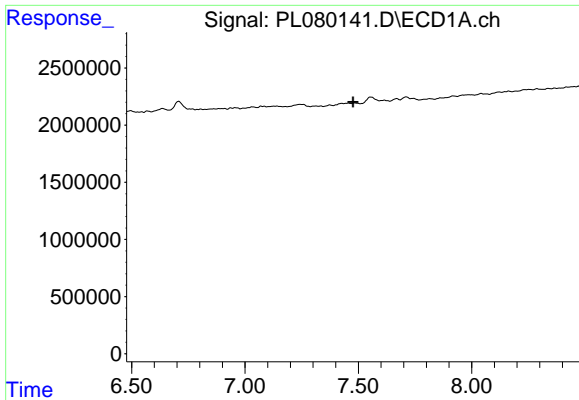
#20 Methoxychlor

R.T.: 7.374 min
 Delta R.T.: 0.015 min
 Response: 109187
 Conc: 0.12 ng/ml



#20 Methoxychlor

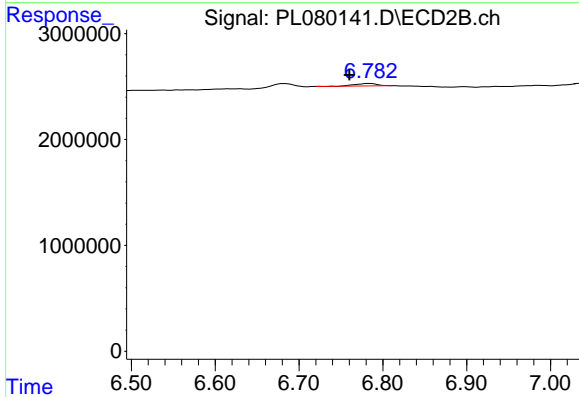
R.T.: 6.538 min
 Delta R.T.: -0.005 min
 Response: 11501
 Conc: 0.01 ng/ml



#21 Endrin ketone

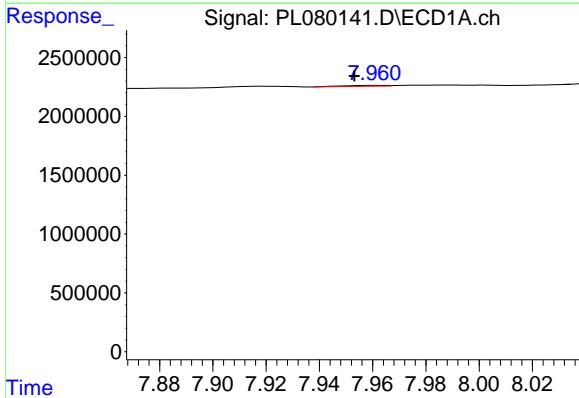
R.T.: 0.000 min
 Exp R.T.: 7.477 min
 Response: 0
 Conc: N.D.

Instrument :
 ECD_L
 ClientSampleId :



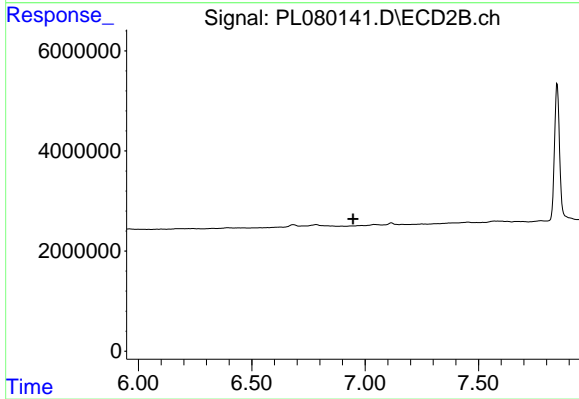
#21 Endrin ketone

R.T.: 6.784 min
 Delta R.T.: 0.024 min
 Response: 438930
 Conc: 0.18 ng/ml



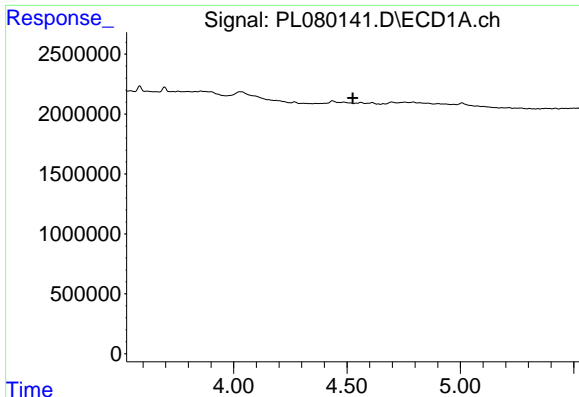
#22 Mirex

R.T.: 7.961 min
 Delta R.T.: 0.008 min
 Response: 88820
 Conc: 0.06 ng/ml



#22 Mirex

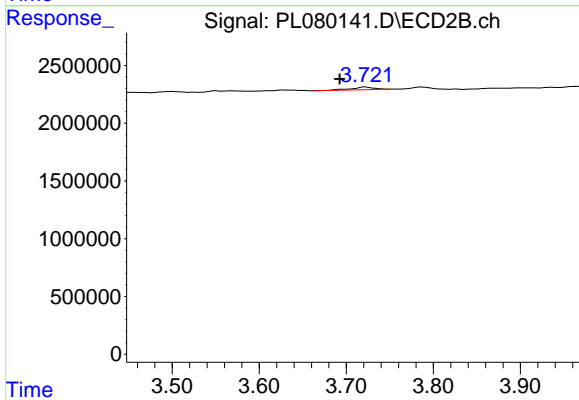
R.T.: 0.000 min
 Exp R.T.: 6.946 min
 Response: 0
 Conc: N.D.



#23 Chlordane-1

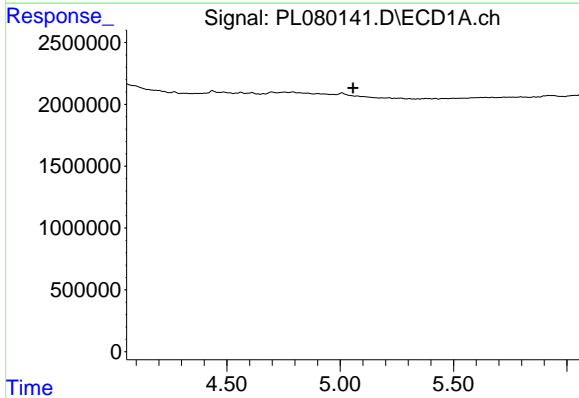
R.T.: 0.000 min
 Exp R.T.: 4.526 min
 Response: 0
 Conc: N.D.

Instrument :
 ECD_L
 ClientSampleId :



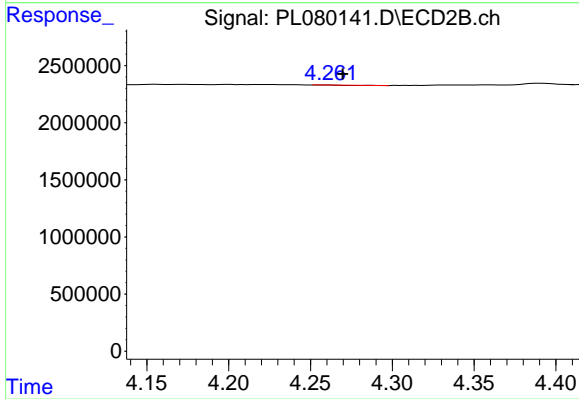
#23 Chlordane-1

R.T.: 3.722 min
 Delta R.T.: 0.030 min
 Response: 433391
 Conc: 5.57 ng/ml



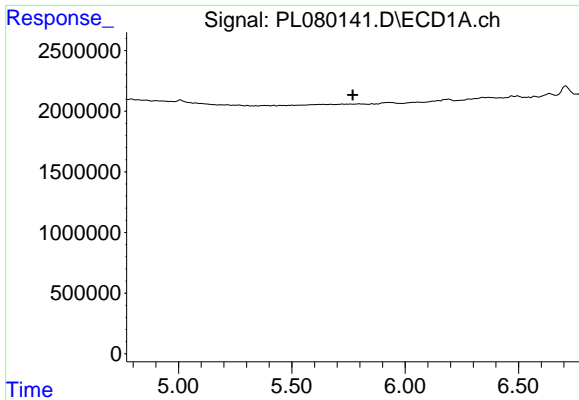
#24 Chlordane-2

R.T.: 0.000 min
 Exp R.T.: 5.057 min
 Response: 0
 Conc: N.D.



#24 Chlordane-2

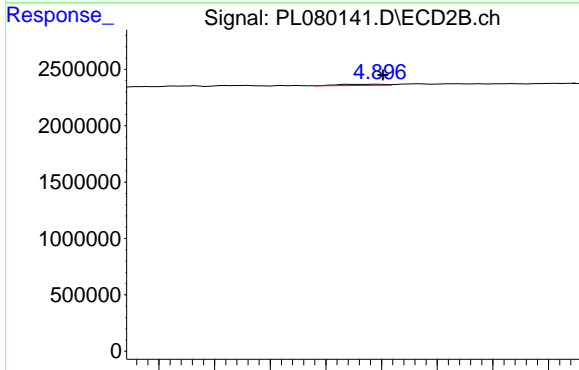
R.T.: 4.286 min
 Delta R.T.: 0.017 min
 Response: 450
 Conc: 0.01 ng/ml



#25 Chlordane-3

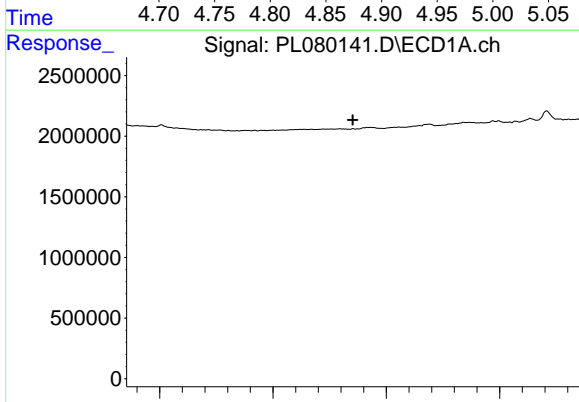
R.T.: 0.000 min
 Exp R.T.: 5.770 min
 Response: 0
 Conc: N.D.

Instrument :
 ECD_L
 ClientSampleId :



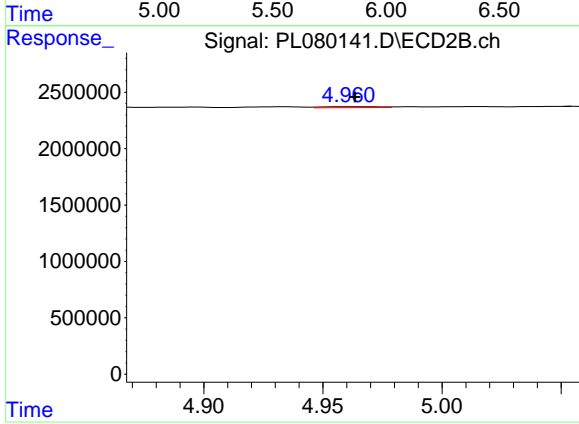
#25 Chlordane-3

R.T.: 4.896 min
 Delta R.T.: -0.005 min
 Response: 307490
 Conc: 1.18 ng/ml



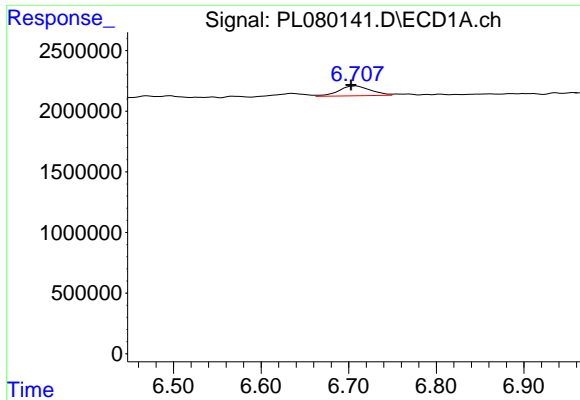
#26 Chlordane-4

R.T.: 0.000 min
 Exp R.T.: 5.852 min
 Response: 0
 Conc: N.D.



#26 Chlordane-4

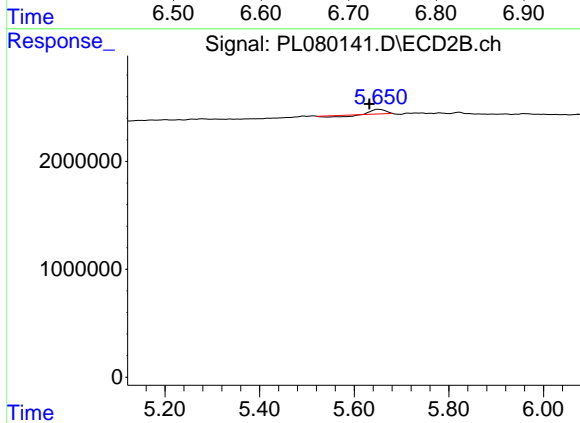
R.T.: 4.962 min
 Delta R.T.: -0.002 min
 Response: 155723
 Conc: 0.59 ng/ml



#27 Chlordane-5

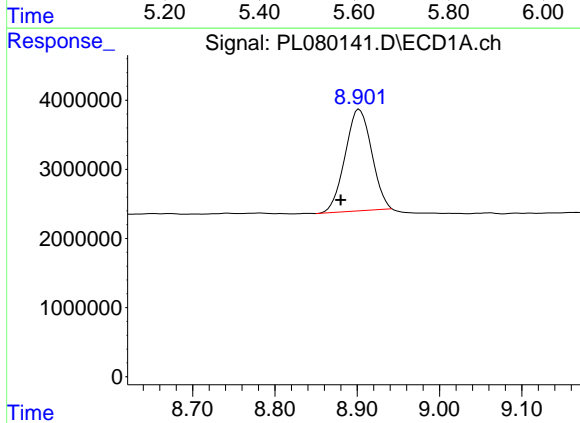
R.T.: 6.708 min
 Delta R.T.: 0.006 min
 Response: 2069751
 Conc: 32.36 ng/ml

Instrument :
 ECD_L
 ClientSampleId :



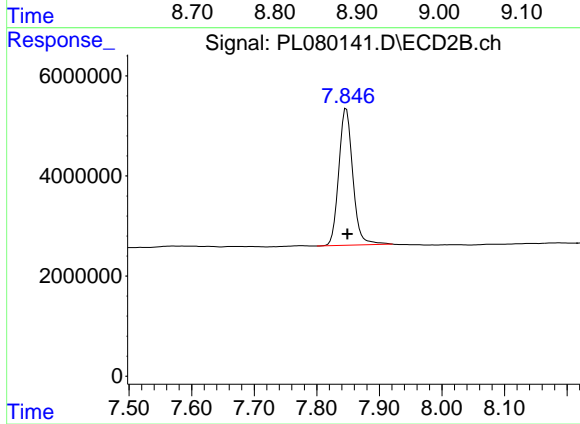
#27 Chlordane-5

R.T.: 5.651 min
 Delta R.T.: 0.019 min
 Response: 504414
 Conc: 6.86 ng/ml



#28 Decachlorobiphenyl

R.T.: 8.903 min
 Delta R.T.: 0.023 min
 Response: 32929074
 Conc: 19.19 ng/ml



#28 Decachlorobiphenyl

R.T.: 7.847 min
 Delta R.T.: -0.002 min
 Response: 42651672
 Conc: 18.88 ng/ml