

Data Path : Z:\pestpcbsrv\HPCHEM1\ECD_L\Data\PL010722\
 Data File : PL071866.D
 Signal(s) : Signal #1: ECD1A.ch Signal #2: ECD2B.ch
 Acq On : 07 Jan 2022 14:48
 Operator : AR\AJ
 Sample : N1050-01
 Misc :
 ALS Vial : 9 Sample Multiplier: 1

Instrument :
 ECD_L
 ClientSampleId :

Integration File signal 1: autoint1.e
 Integration File signal 2: autoint2.e
 Quant Time: Jan 07 23:37:28 2022
 Quant Method : Z:\pestpcbsrv\HPCHEM1\ECD_L\methods\PL010422.M
 Quant Title : GC Extractables
 QLast Update : Thu Jan 06 10:33:37 2022
 Response via : Initial Calibration
 Integrator: ChemStation

Volume Inj. : 1 µl
 Signal #1 Phase : ZB-MR2 Signal #2 Phase: ZB-MR1
 Signal #1 Info : 30M x 0.32mm x0.2 Signal #2 Info : 30M x 0.32mm x0.5µm

	Compound	RT#1	RT#2	Resp#1	Resp#2	ng/ml	ng/ml

System Monitoring Compounds							
1)	SA Tetrachlo...	4.560	5.496	5276901	9576207	11.423	7.794 #
28)	SA Decachlor...	10.321	11.390	8516169	15530643	11.779	13.106
Target Compounds							
2)	A alpha-BHC	5.281f	6.081	1193459	1611872	1.933	0.925 #
3)	MA gamma-BHC...	0.000	6.457	0	200196	N.D.	0.124 #
4)	MA Heptachlor	6.116f	0.000	154311	0	0.226	N.D. #
5)	MB Aldrin	6.419	7.493	594699	1872911	0.945	1.216 #
6)	B beta-BHC	0.000	6.732	0	3306962	N.D.	4.628 #
7)	B delta-BHC	0.000	7.001	0	753634	N.D.	0.491 #
8)	B Heptachlo...	0.000	7.959	0	813293	N.D.	0.582 #
9)	A Endosulfan I	0.000	8.350	0	152271	N.D.	0.123 #
10)	B gamma-Chl...	7.264	8.228	1108662	2574457	1.788	1.883
11)	B alpha-Chl...	7.343	8.310	926790	3094718	1.497	2.325 #
12)	B 4,4'-DDE	7.559	8.497	314318	1602559	0.567	1.273 #
13)	MA Dieldrin	7.697f	8.646	703248	419671	1.166	0.320 #
14)	MA Endrin	7.955	8.891	558372	998156	1.057	0.964
15)	B Endosulfa...	8.287	9.101f	813063	400185	1.407	0.356 #
16)	A 4,4'-DDD	0.000	9.037	0	2964328	N.D.	3.083 #
17)	MA 4,4'-DDT	8.400	9.354	1915041	735739	4.013	0.780 #
18)	B Endrin al...	8.448f	9.273f	593845	-122182	1.309	N.D. #
19)	B Endosulfa...	8.710	0.000	607186	0	1.038	N.D. #
20)	A Methoxychlor	8.974f	0.000	1357542	0	4.386	N.D. #
23)	Chlordane-1	5.891	6.886	1462059	4285081	81.399	86.510
24)	Chlordane-2	6.574	7.493f	521333	1872911	21.689	34.602 #
25)	Chlordane-3	7.264	8.228	1108662	2574457	17.062	12.613 #
26)	Chlordane-4	7.343	8.310	926790	3094718	13.197	12.714
27)	Chlordane-5	8.287	9.196	813063	590437	34.057	14.745 #

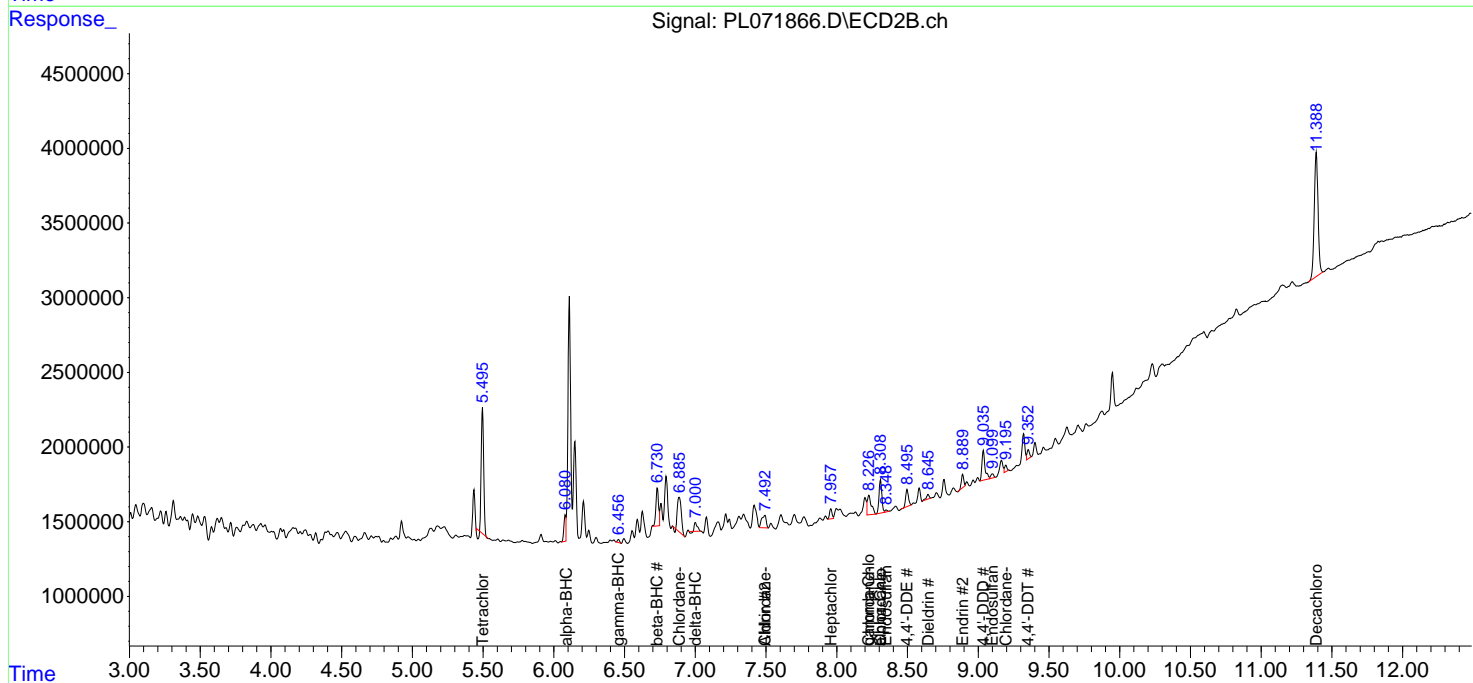
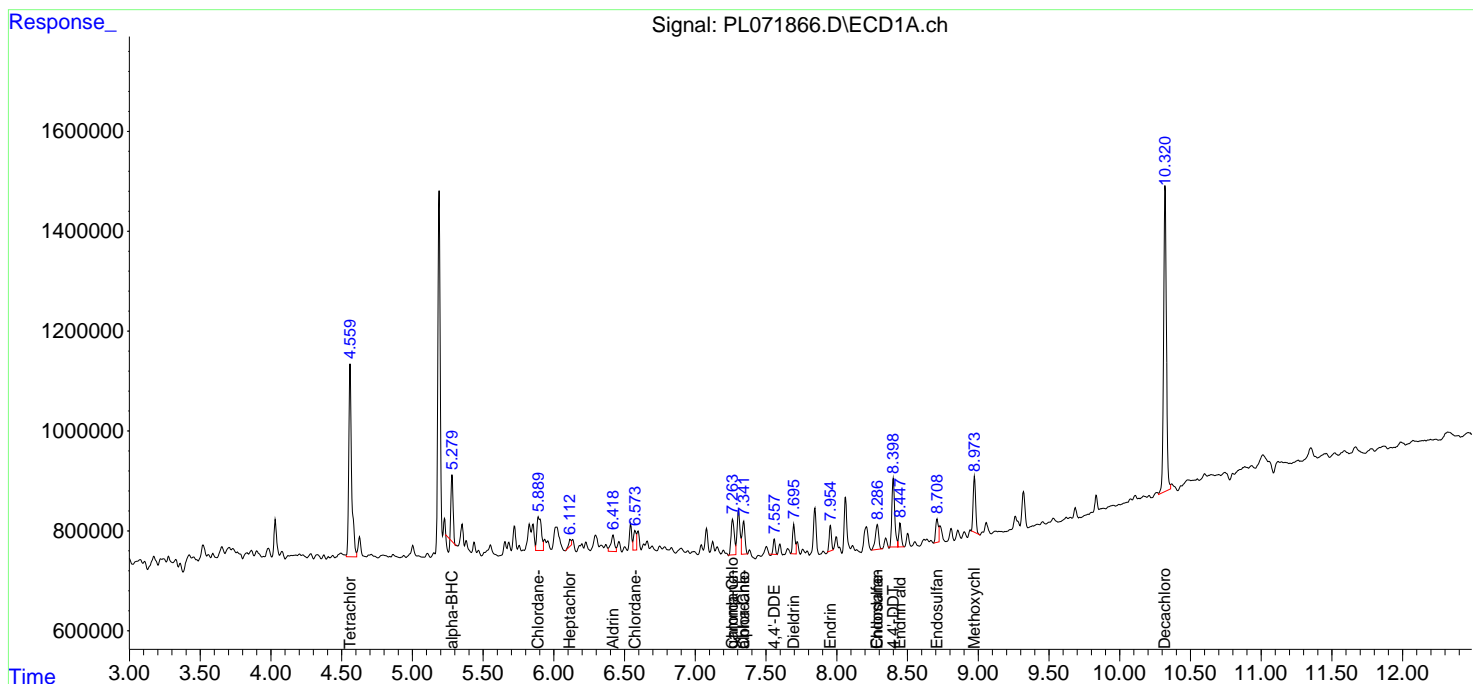
(f)=RT Delta > 1/2 Window (#)=Amounts differ by > 25% (m)=manual int.

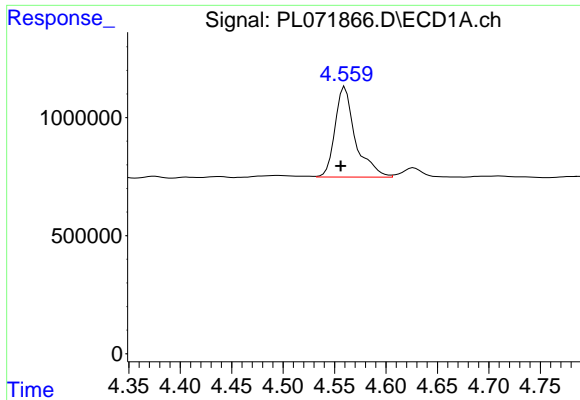
Data Path : Z:\pestpcbsrv\HPCHEM1\ECD_L\Data\PL010722\
 Data File : PL071866.D
 Signal(s) : Signal #1: ECD1A.ch Signal #2: ECD2B.ch
 Acq On : 07 Jan 2022 14:48
 Operator : AR\AJ
 Sample : N1050-01
 Misc :
 ALS Vial : 9 Sample Multiplier: 1

Instrument :
 ECD_L
 ClientSampleId :

Integration File signal 1: autoint1.e
 Integration File signal 2: autoint2.e
 Quant Time: Jan 07 23:37:28 2022
 Quant Method : Z:\pestpcbsrv\HPCHEM1\ECD_L\methods\PL010422.M
 Quant Title : GC Extractables
 QLast Update : Thu Jan 06 10:33:37 2022
 Response via : Initial Calibration
 Integrator: ChemStation

Volume Inj. : 1 µl
 Signal #1 Phase : ZB-MR2 Signal #2 Phase: ZB-MR1
 Signal #1 Info : 30M x 0.32mm x0.2 Signal #2 Info : 30M x 0.32mm x0.5µm

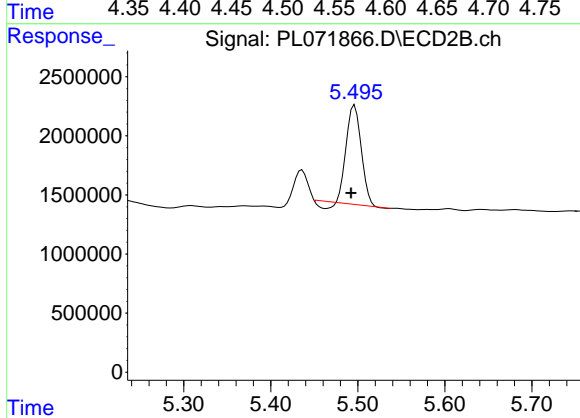




#1 Tetrachloro-m-xylene

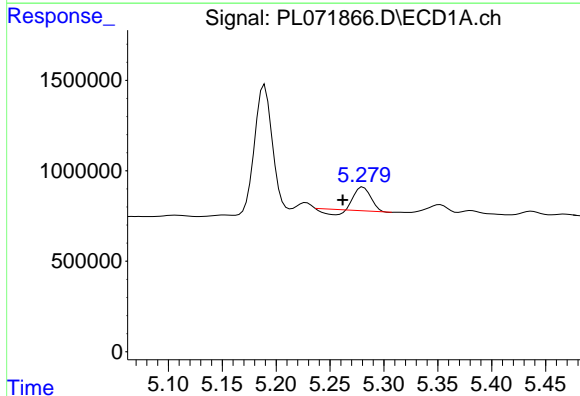
R.T.: 4.560 min
 Delta R.T.: 0.004 min
 Response: 5276901
 Conc: 11.42 ng/ml

Instrument :
 ECD_L
 ClientSampleId :



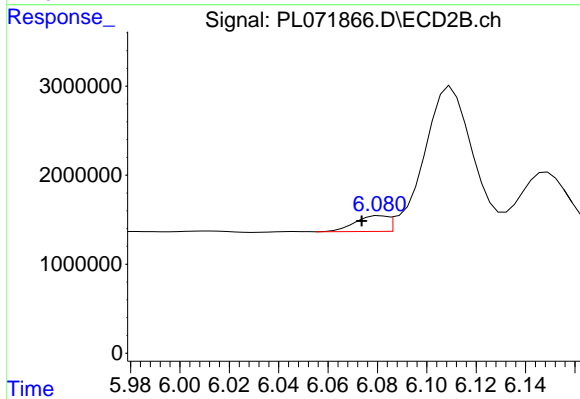
#1 Tetrachloro-m-xylene

R.T.: 5.496 min
 Delta R.T.: 0.004 min
 Response: 9576207
 Conc: 7.79 ng/ml



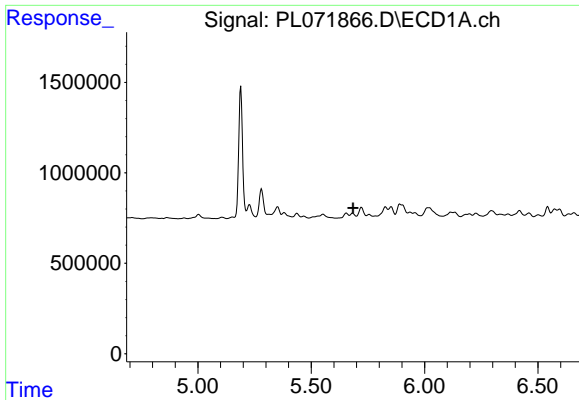
#2 alpha-BHC

R.T.: 5.281 min
 Delta R.T.: 0.019 min
 Response: 1193459
 Conc: 1.93 ng/ml



#2 alpha-BHC

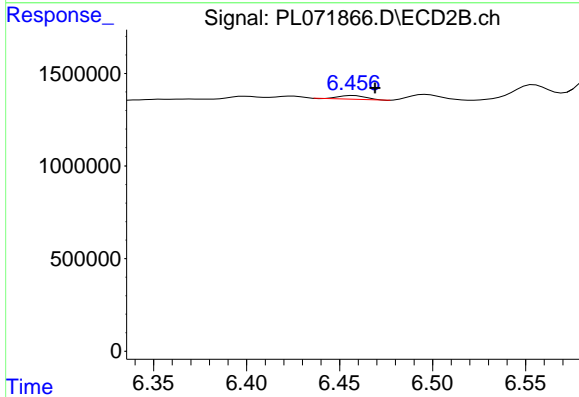
R.T.: 6.081 min
 Delta R.T.: 0.008 min
 Response: 1611872
 Conc: 0.92 ng/ml



#3 gamma-BHC (Lindane)

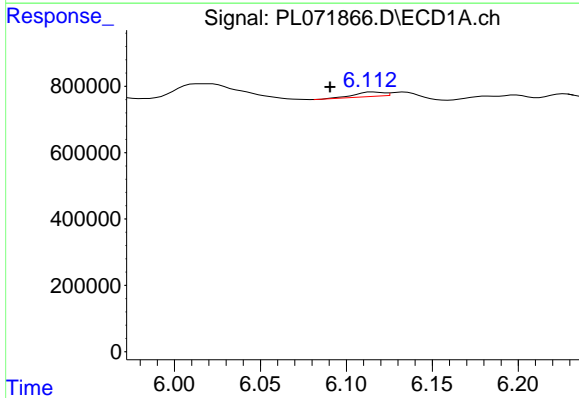
R.T.: 0.000 min
 Exp R.T.: 5.684 min
 Response: 0
 Conc: N.D.

Instrument :
 ECD_L
 ClientSampleId :



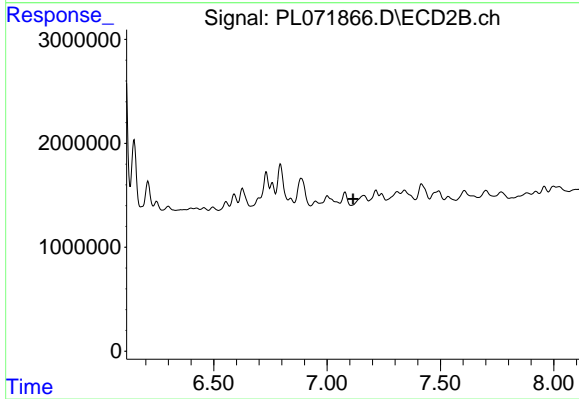
#3 gamma-BHC (Lindane)

R.T.: 6.457 min
 Delta R.T.: -0.012 min
 Response: 200196
 Conc: 0.12 ng/ml



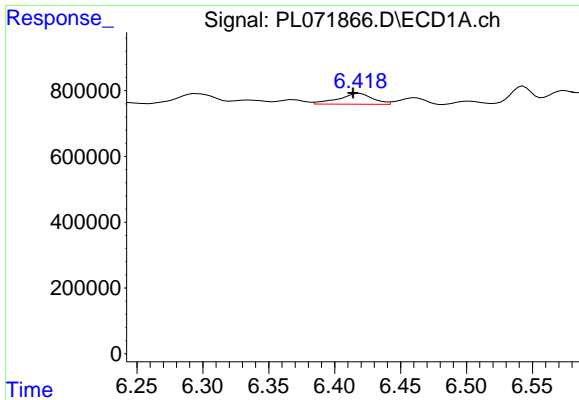
#4 Heptachlor

R.T.: 6.116 min
 Delta R.T.: 0.025 min
 Response: 154311
 Conc: 0.23 ng/ml



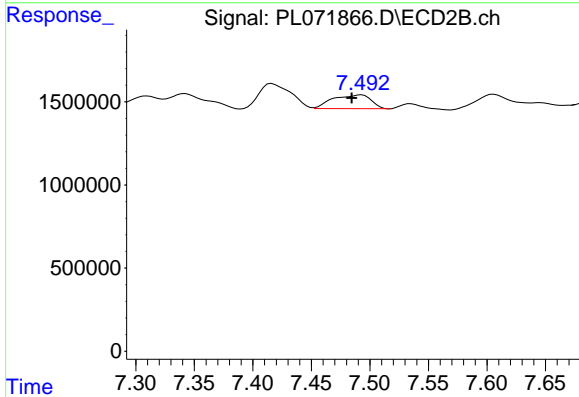
#4 Heptachlor

R.T.: 0.000 min
 Exp R.T.: 7.115 min
 Response: 0
 Conc: N.D.

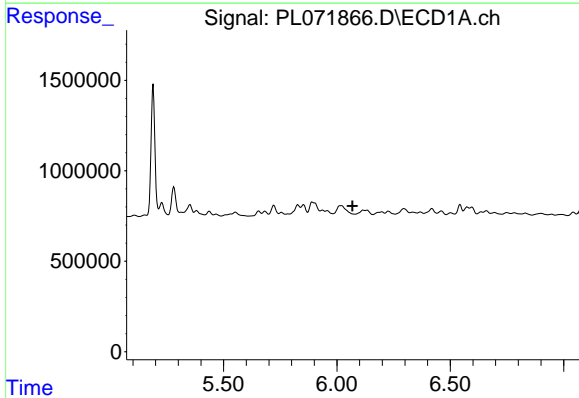


#5 Aldrin
 R.T.: 6.419 min
 Delta R.T.: 0.005 min
 Response: 594699
 Conc: 0.94 ng/ml

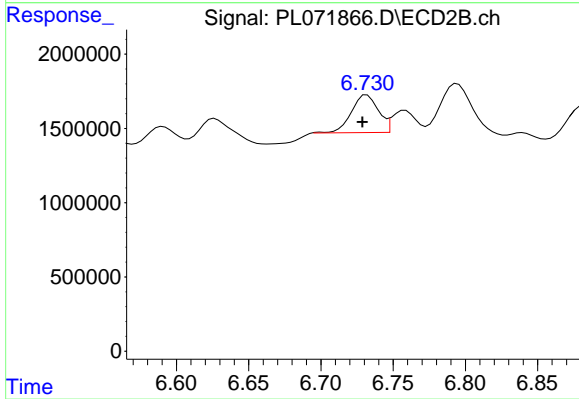
Instrument :
 ECD_L
 ClientSampleId :



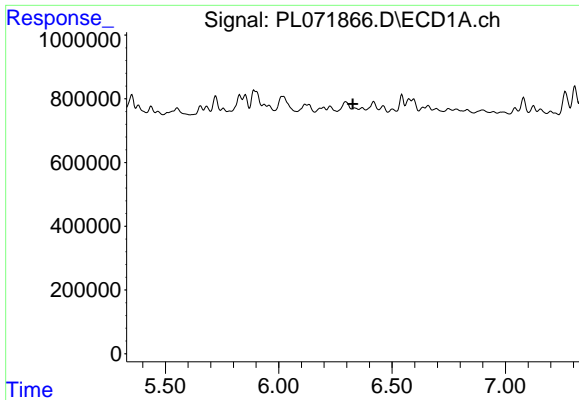
#5 Aldrin
 R.T.: 7.493 min
 Delta R.T.: 0.009 min
 Response: 1872911
 Conc: 1.22 ng/ml



#6 beta-BHC
 R.T.: 0.000 min
 Exp R.T. : 6.069 min
 Response: 0
 Conc: N.D.



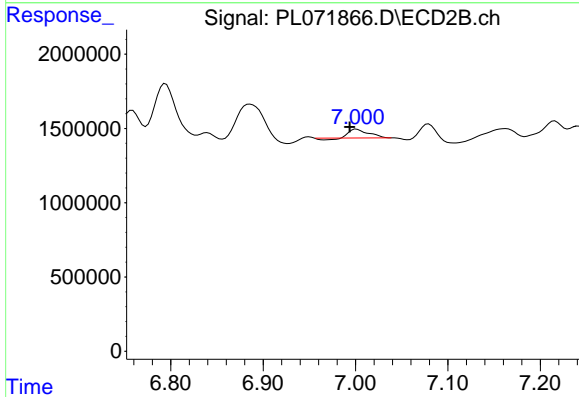
#6 beta-BHC
 R.T.: 6.732 min
 Delta R.T.: 0.003 min
 Response: 3306962
 Conc: 4.63 ng/ml



#7 delta-BHC

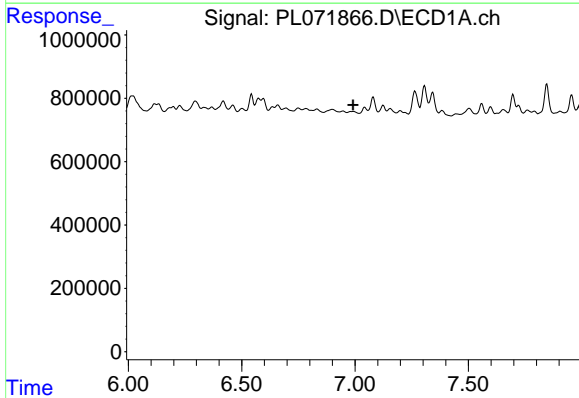
R.T.: 0.000 min
 Exp R.T.: 6.327 min
 Response: 0
 Conc: N.D.

Instrument :
 ECD_L
 ClientSampleId :



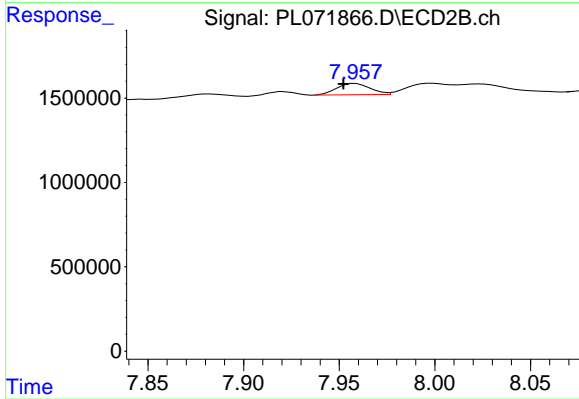
#7 delta-BHC

R.T.: 7.001 min
 Delta R.T.: 0.007 min
 Response: 753634
 Conc: 0.49 ng/ml



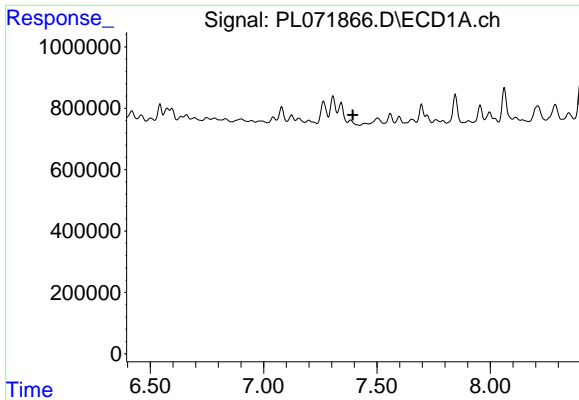
#8 Heptachlor epoxide

R.T.: 0.000 min
 Exp R.T.: 6.992 min
 Response: 0
 Conc: N.D.



#8 Heptachlor epoxide

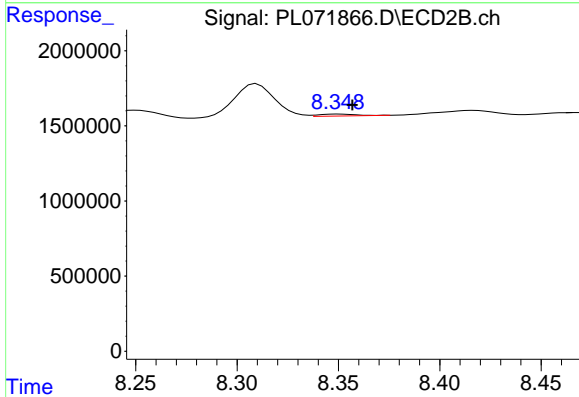
R.T.: 7.959 min
 Delta R.T.: 0.006 min
 Response: 813293
 Conc: 0.58 ng/ml



#9 Endosulfan I

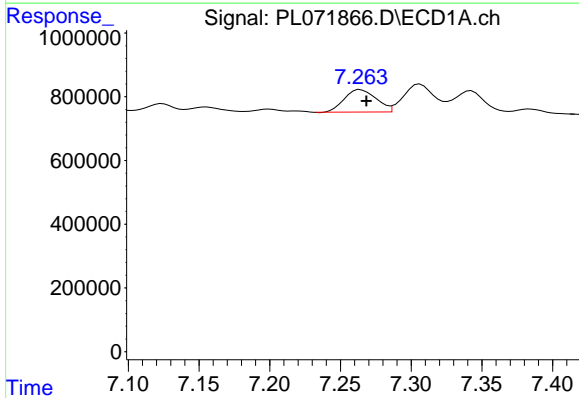
R.T.: 0.000 min
 Exp R.T.: 7.393 min
 Response: 0
 Conc: N.D.

Instrument :
 ECD_L
 ClientSampleId :



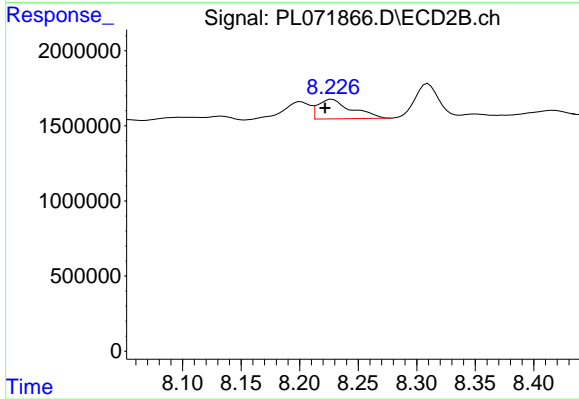
#9 Endosulfan I

R.T.: 8.350 min
 Delta R.T.: -0.007 min
 Response: 152271
 Conc: 0.12 ng/ml



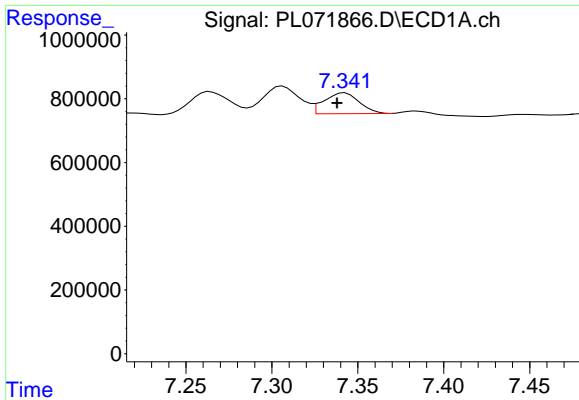
#10 gamma-Chlordane

R.T.: 7.264 min
 Delta R.T.: -0.004 min
 Response: 1108662
 Conc: 1.79 ng/ml



#10 gamma-Chlordane

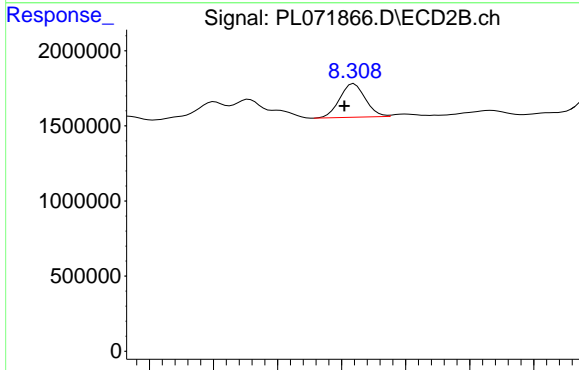
R.T.: 8.228 min
 Delta R.T.: 0.006 min
 Response: 2574457
 Conc: 1.88 ng/ml



#11 alpha-Chlordane

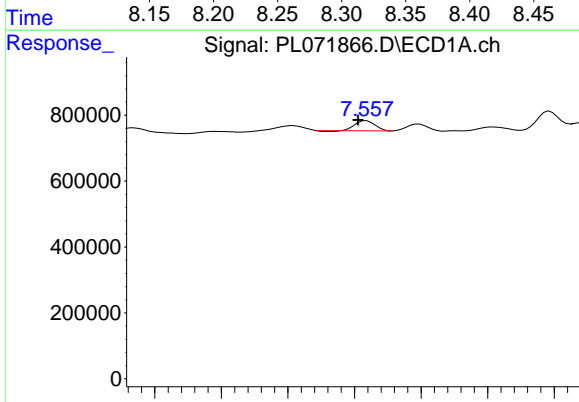
R.T.: 7.343 min
 Delta R.T.: 0.005 min
 Response: 926790
 Conc: 1.50 ng/ml

Instrument :
 ECD_L
 ClientSampleId :



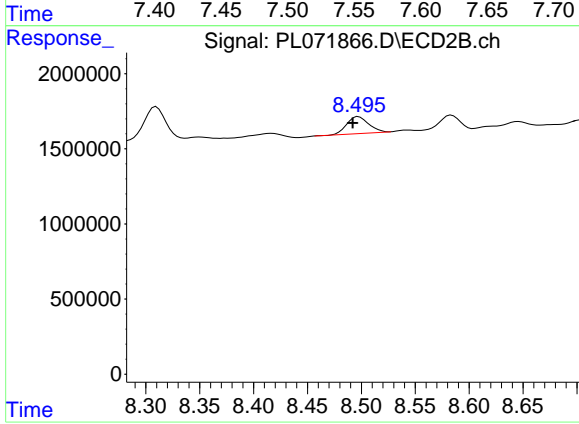
#11 alpha-Chlordane

R.T.: 8.310 min
 Delta R.T.: 0.008 min
 Response: 3094718
 Conc: 2.33 ng/ml



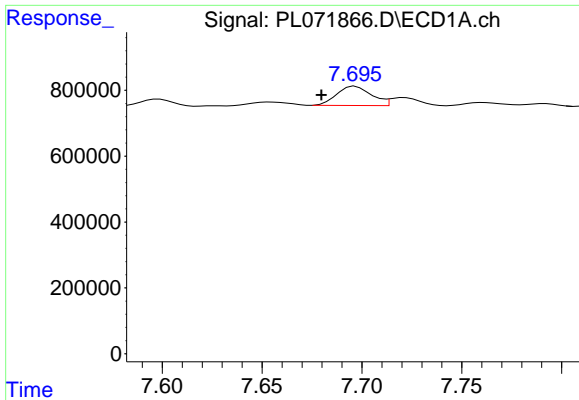
#12 4,4'-DDE

R.T.: 7.559 min
 Delta R.T.: 0.006 min
 Response: 314318
 Conc: 0.57 ng/ml



#12 4,4'-DDE

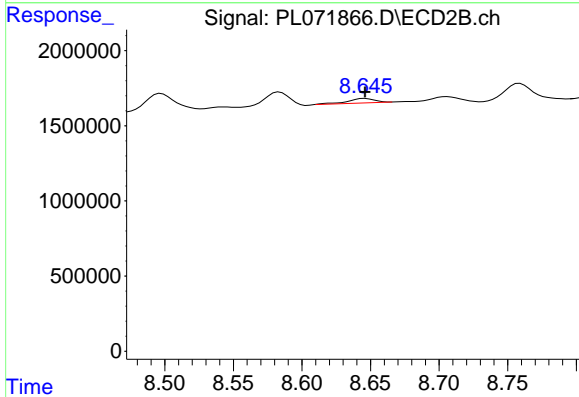
R.T.: 8.497 min
 Delta R.T.: 0.005 min
 Response: 1602559
 Conc: 1.27 ng/ml



#13 Dieldrin

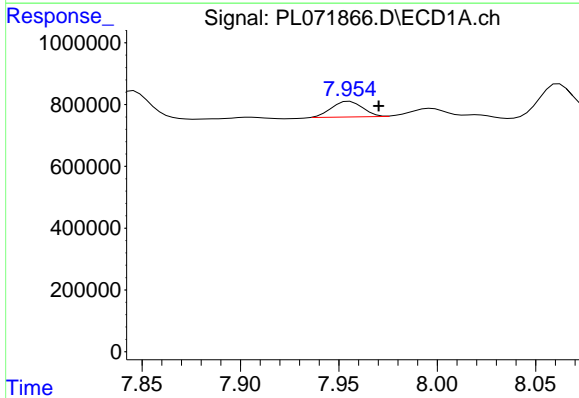
R.T.: 7.697 min
 Delta R.T.: 0.017 min
 Response: 703248
 Conc: 1.17 ng/ml

Instrument :
 ECD_L
 ClientSampleId :



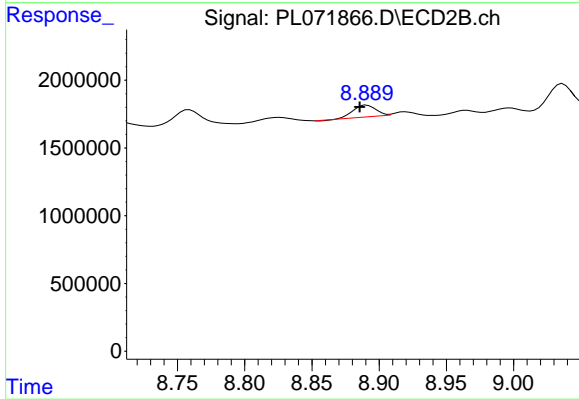
#13 Dieldrin

R.T.: 8.646 min
 Delta R.T.: 0.000 min
 Response: 419671
 Conc: 0.32 ng/ml



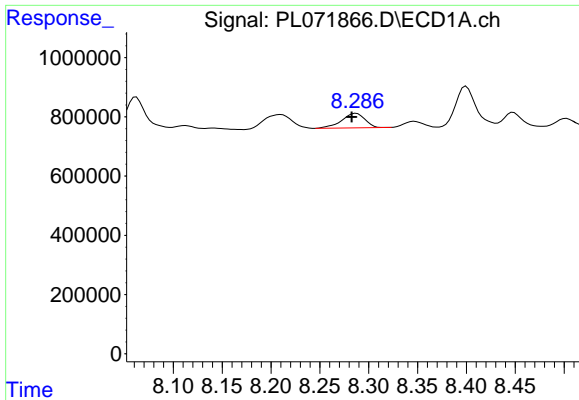
#14 Endrin

R.T.: 7.955 min
 Delta R.T.: -0.015 min
 Response: 558372
 Conc: 1.06 ng/ml



#14 Endrin

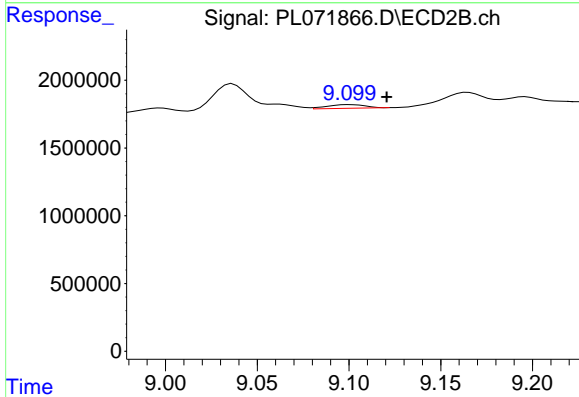
R.T.: 8.891 min
 Delta R.T.: 0.005 min
 Response: 998156
 Conc: 0.96 ng/ml



#15 Endosulfan II

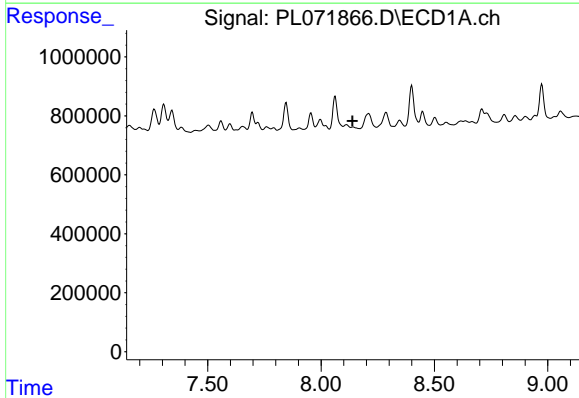
R.T.: 8.287 min
 Delta R.T.: 0.005 min
 Response: 813063
 Conc: 1.41 ng/ml

Instrument :
 ECD_L
 ClientSampleId :



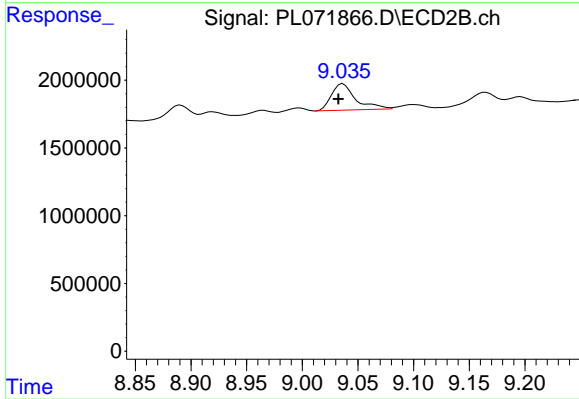
#15 Endosulfan II

R.T.: 9.101 min
 Delta R.T.: -0.020 min
 Response: 400185
 Conc: 0.36 ng/ml



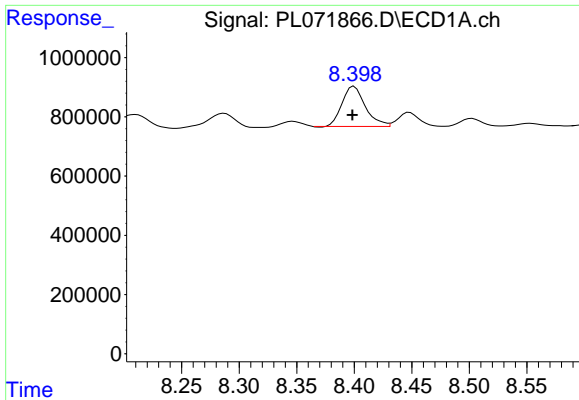
#16 4,4'-DDD

R.T.: 0.000 min
 Exp R.T. : 8.139 min
 Response: 0
 Conc: N.D.



#16 4,4'-DDD

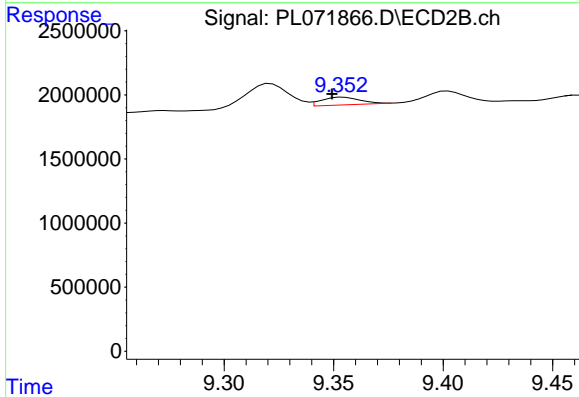
R.T.: 9.037 min
 Delta R.T.: 0.004 min
 Response: 2964328
 Conc: 3.08 ng/ml



#17 4,4'-DDT

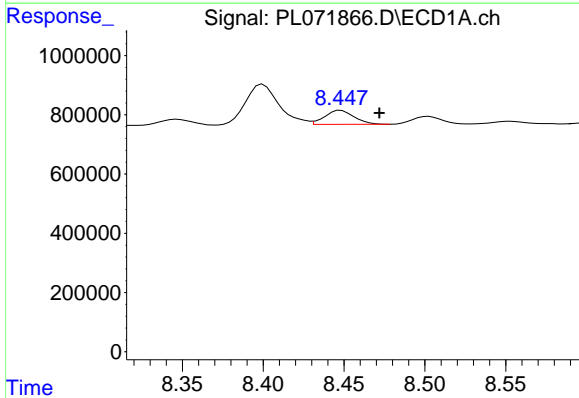
R.T.: 8.400 min
 Delta R.T.: 0.001 min
 Response: 1915041
 Conc: 4.01 ng/ml

Instrument :
 ECD_L
 ClientSampleId :



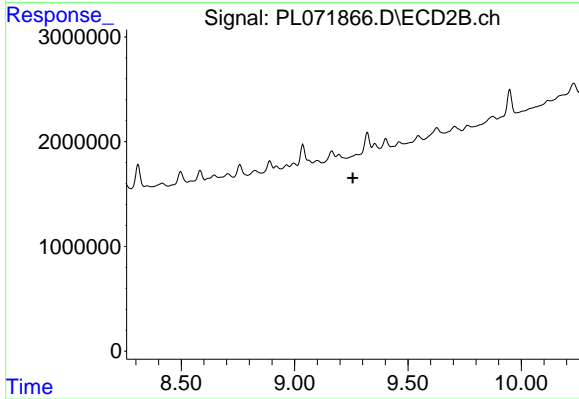
#17 4,4'-DDT

R.T.: 9.354 min
 Delta R.T.: 0.005 min
 Response: 735739
 Conc: 0.78 ng/ml



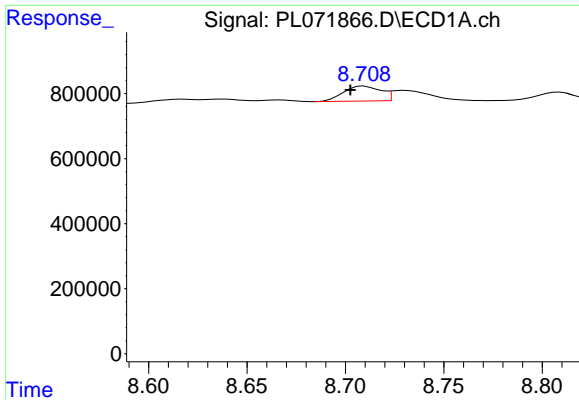
#18 Endrin aldehyde

R.T.: 8.448 min
 Delta R.T.: -0.024 min
 Response: 593845
 Conc: 1.31 ng/ml



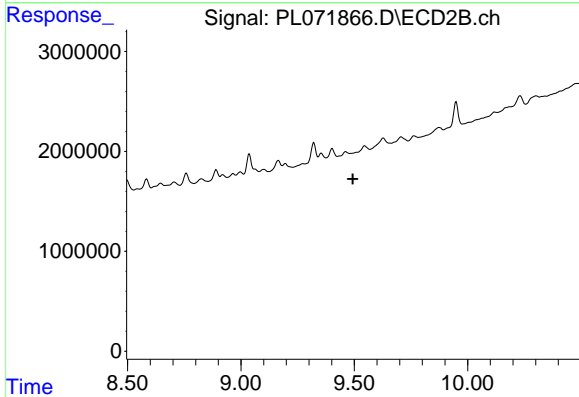
#18 Endrin aldehyde

R.T.: 9.273 min
 Delta R.T.: 0.017 min
 Response: -122182
 Conc: N.D.

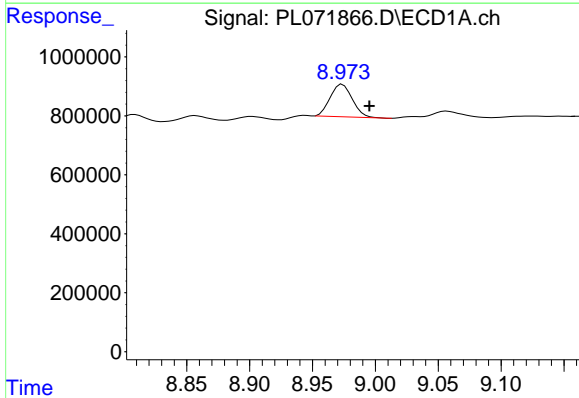


#19 Endosulfan Sulfate
 R.T.: 8.710 min
 Delta R.T.: 0.007 min
 Response: 607186
 Conc: 1.04 ng/ml

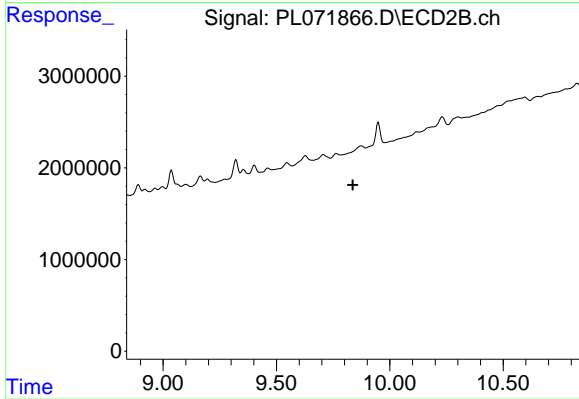
Instrument :
 ECD_L
 ClientSampleId :



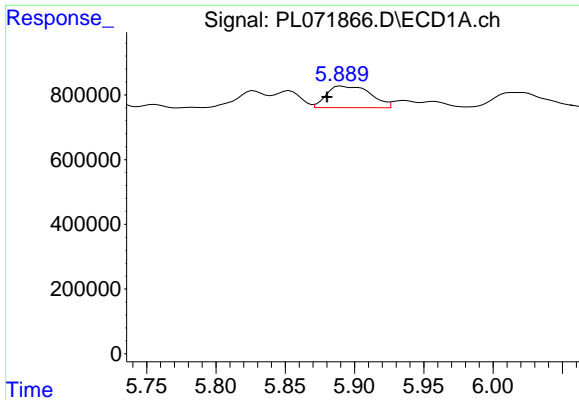
#19 Endosulfan Sulfate
 R.T.: 0.000 min
 Exp R.T. : 9.494 min
 Response: 0
 Conc: N.D.



#20 Methoxychlor
 R.T.: 8.974 min
 Delta R.T.: -0.021 min
 Response: 1357542
 Conc: 4.39 ng/ml



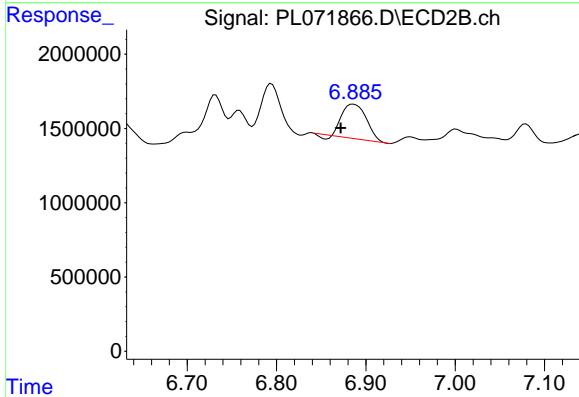
#20 Methoxychlor
 R.T.: 0.000 min
 Exp R.T. : 9.837 min
 Response: 0
 Conc: N.D.



#23 Chlordane-1

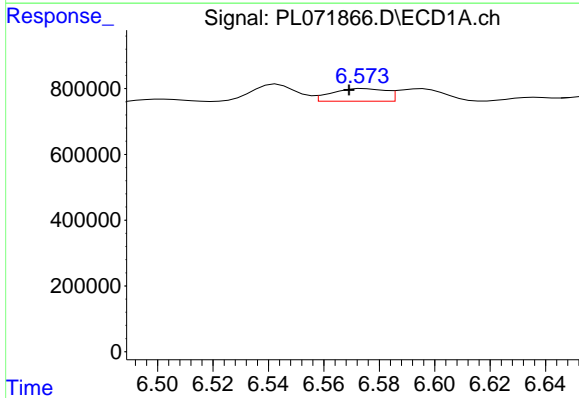
R.T.: 5.891 min
 Delta R.T.: 0.010 min
 Response: 1462059
 Conc: 81.40 ng/ml

Instrument :
 ECD_L
 ClientSampleId :



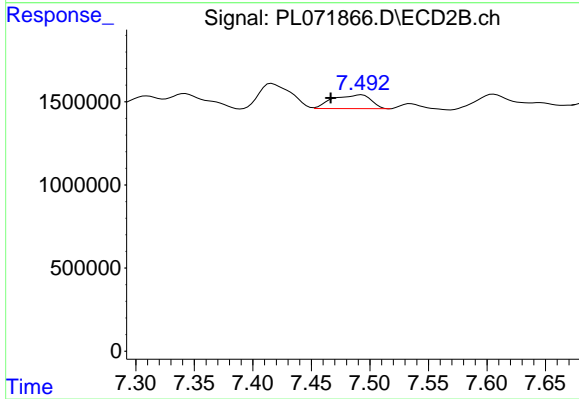
#23 Chlordane-1

R.T.: 6.886 min
 Delta R.T.: 0.014 min
 Response: 4285081
 Conc: 86.51 ng/ml



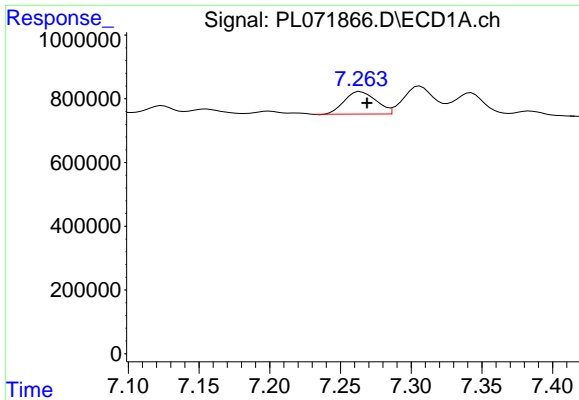
#24 Chlordane-2

R.T.: 6.574 min
 Delta R.T.: 0.005 min
 Response: 521333
 Conc: 21.69 ng/ml



#24 Chlordane-2

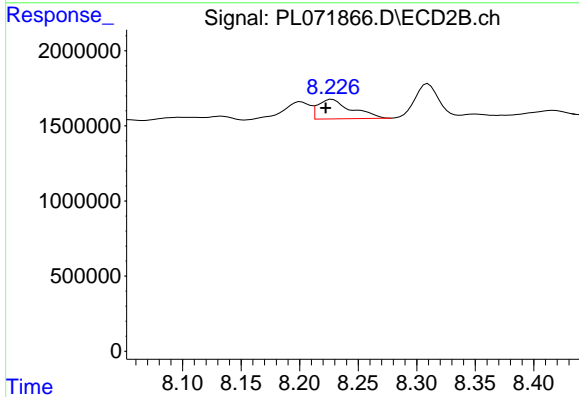
R.T.: 7.493 min
 Delta R.T.: 0.027 min
 Response: 1872911
 Conc: 34.60 ng/ml



#25 Chlordane-3

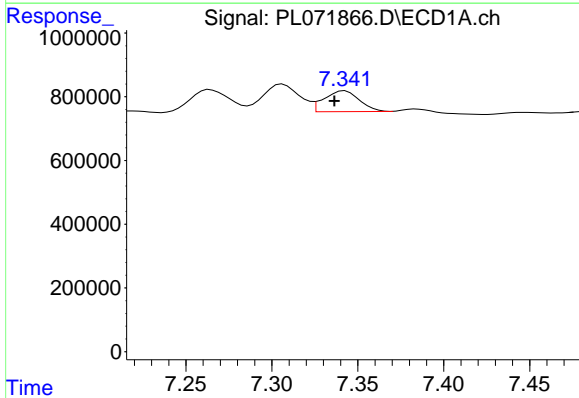
R.T.: 7.264 min
 Delta R.T.: -0.005 min
 Response: 1108662
 Conc: 17.06 ng/ml

Instrument :
 ECD_L
 ClientSampleId :



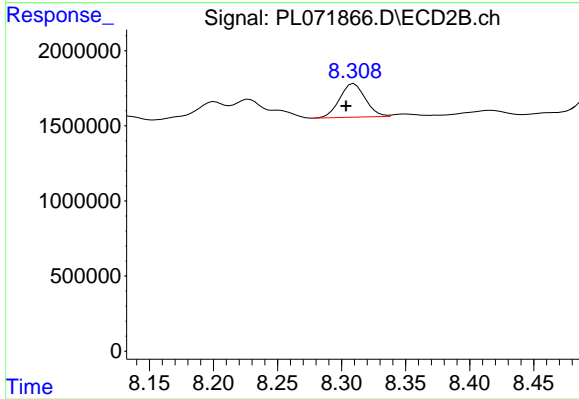
#25 Chlordane-3

R.T.: 8.228 min
 Delta R.T.: 0.005 min
 Response: 2574457
 Conc: 12.61 ng/ml



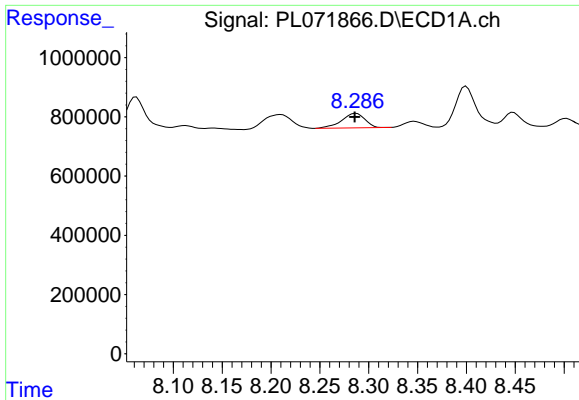
#26 Chlordane-4

R.T.: 7.343 min
 Delta R.T.: 0.006 min
 Response: 926790
 Conc: 13.20 ng/ml



#26 Chlordane-4

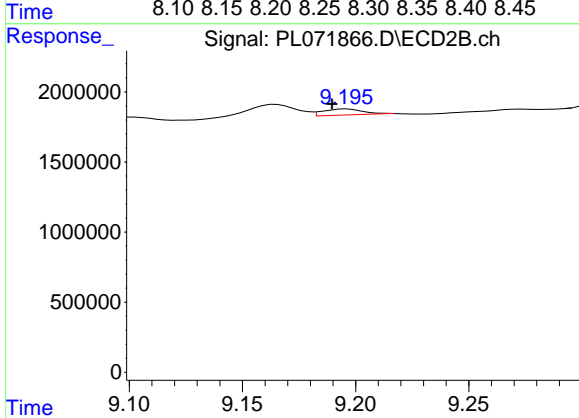
R.T.: 8.310 min
 Delta R.T.: 0.006 min
 Response: 3094718
 Conc: 12.71 ng/ml



#27 Chlordane-5

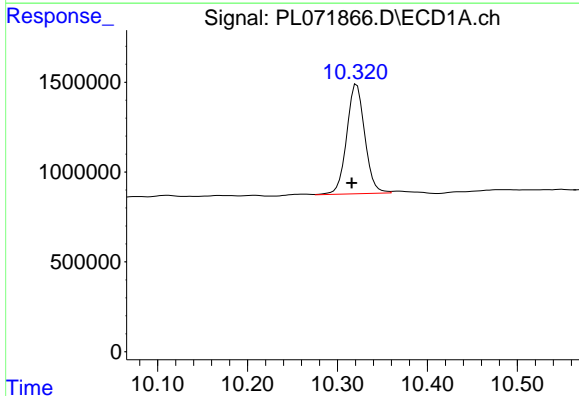
R.T.: 8.287 min
 Delta R.T.: 0.001 min
 Response: 813063
 Conc: 34.06 ng/ml

Instrument :
 ECD_L
 ClientSampleId :



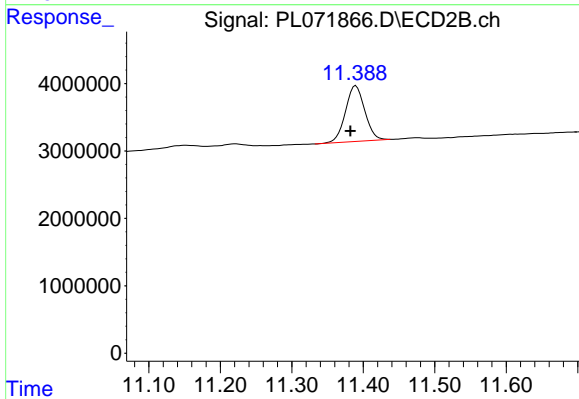
#27 Chlordane-5

R.T.: 9.196 min
 Delta R.T.: 0.006 min
 Response: 590437
 Conc: 14.74 ng/ml



#28 Decachlorobiphenyl

R.T.: 10.321 min
 Delta R.T.: 0.006 min
 Response: 8516169
 Conc: 11.78 ng/ml



#28 Decachlorobiphenyl

R.T.: 11.390 min
 Delta R.T.: 0.008 min
 Response: 15530643
 Conc: 13.11 ng/ml