

Data Path : Z:\pestpcbsrv\HPCHEM1\ECD_L\Data\PL010722\
 Data File : PL071883.D
 Signal(s) : Signal #1: ECD1A.ch Signal #2: ECD2B.ch
 Acq On : 07 Jan 2022 19:25
 Operator : AR\AJ
 Sample : N1065-38MSD
 Misc :
 ALS Vial : 24 Sample Multiplier: 1

Instrument :
 ECD_L
 ClientSampleId :

Integration File signal 1: autoint1.e
 Integration File signal 2: autoint2.e
 Quant Time: Jan 07 23:43:08 2022
 Quant Method : Z:\pestpcbsrv\HPCHEM1\ECD_L\methods\PL010422.M
 Quant Title : GC Extractables
 QLast Update : Thu Jan 06 10:33:37 2022
 Response via : Initial Calibration
 Integrator: ChemStation

Volume Inj. : 1 µl
 Signal #1 Phase : ZB-MR2 Signal #2 Phase: ZB-MR1
 Signal #1 Info : 30M x 0.32mm x0.2 Signal #2 Info : 30M x 0.32mm x0.5µm

	Compound	RT#1	RT#2	Resp#1	Resp#2	ng/ml	ng/ml

System Monitoring Compounds							
1)	SA Tetrachlo...	4.558	5.494	10091626	27863736	21.846	22.678
28)	SA Decachlor...	10.321	11.388	16647829	28594375	23.025	24.130
Target Compounds							
2)	A alpha-BHC	5.264	6.076	33447018	98561506	54.168	56.532
3)	MA gamma-BHC...	5.688	6.472	32608827	91617089	53.570	56.638
4)	MA Heptachlor	6.094	7.119	36795180	92586361	53.899	57.780
5)	MB Aldrin	6.418	7.488	33822898	88463147	53.719	57.421
6)	B beta-BHC	6.072	6.731	13926516	39457169	51.472	55.223
7)	B delta-BHC	6.331	6.997	33825898	92253630	54.092	60.096
8)	Heptachlo...	6.996	7.956	32764765	78478568	53.713	56.163
9)	A Endosulfan I	7.398	8.361	30418368	70607779	53.711	57.006
10)	B gamma-Chl...	7.273	8.226	33516099	78200998	54.055	57.189
11)	B alpha-Chl...	7.342	8.306	33275330	77182032	53.739	57.994
12)	B 4,4'-DDE	7.557	8.496	30720723	74277402	55.409	59.013
13)	MA Dieldrin	7.684	8.650	32570726	74581649	54.004	56.846
14)	MA Endrin	7.975	8.889	30385627	63422627	57.498	61.282
15)	B Endosulfa...	8.288	9.125	30403639	63647404	52.597	56.678
16)	A 4,4'-DDD	8.144	9.037	25035413	54460213	51.991	56.648
17)	MA 4,4'-DDT	8.404	9.353	27526920	57431242	57.677	60.901
18)	B Endrin al...	8.476	9.260	23168274	46880256	51.057	55.245
19)	B Endosulfa...	8.708	9.498	30441523	58656014	52.061	56.462
20)	A Methoxychlor	9.000	9.841	17349937	30299498	56.058	61.532
21)	B Endrin ke...	9.226	9.995	35037685	61062294	50.560	54.108
22)	Mirex	9.408	10.458	32851759	50301351	54.764	58.552
24)	Chlordane-2	0.000	7.445f	0	174578	N.D.	3.225 #
25)	Chlordane-3	7.273	8.226	33516099	78200998	515.792	383.128 #
26)	Chlordane-4	7.342	8.306	33275330	77182032	473.810	317.074 #
27)	Chlordane-5	8.288	0.000	30403639	0	1273.518	N.D. #

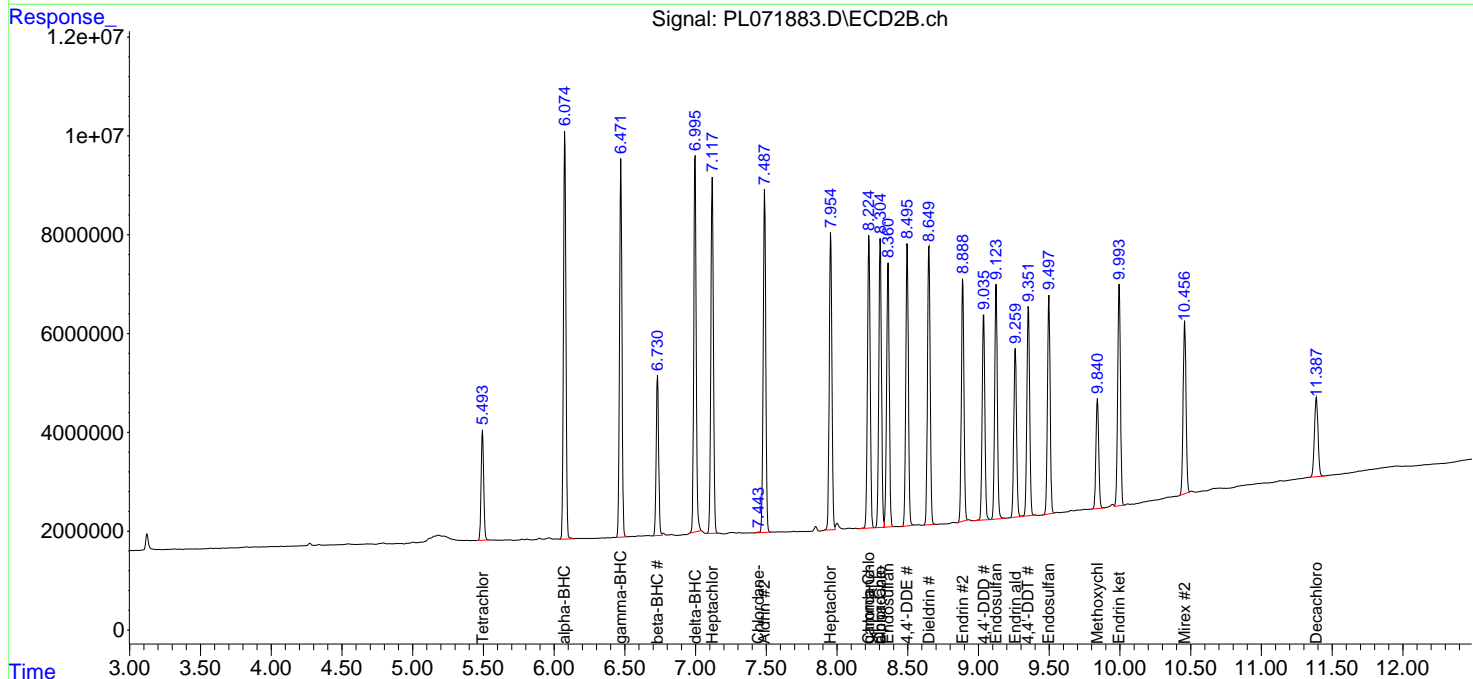
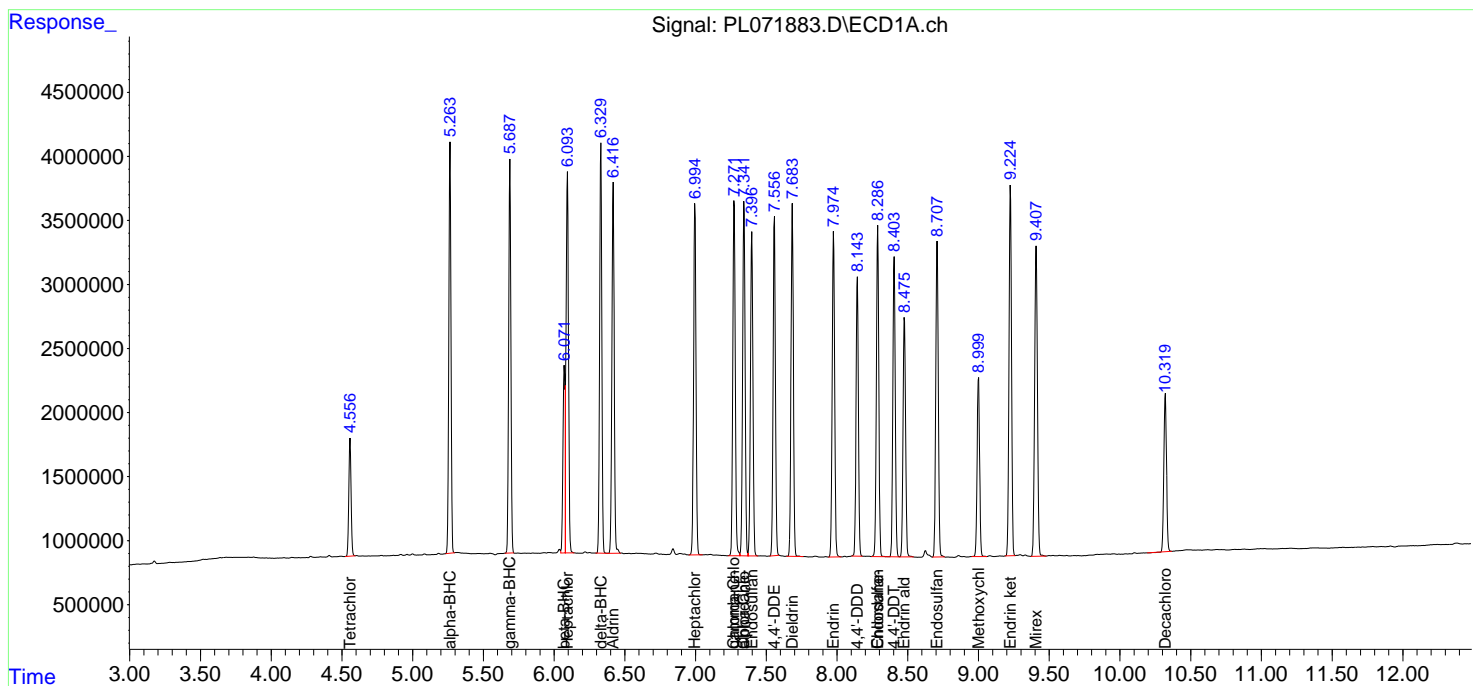
(f)=RT Delta > 1/2 Window (#)=Amounts differ by > 25% (m)=manual int.

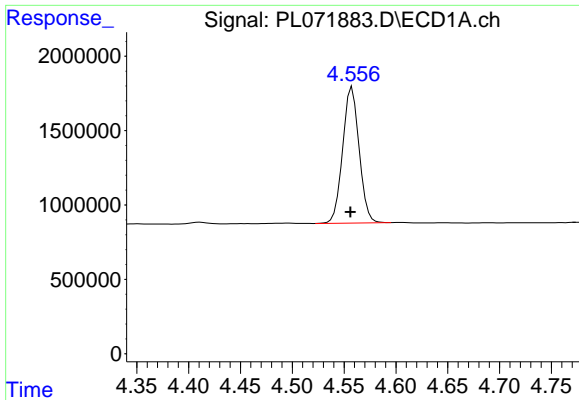
Data Path : Z:\pestpcbsrv\HPCHEM1\ECD_L\Data\PL010722\
 Data File : PL071883.D
 Signal(s) : Signal #1: ECD1A.ch Signal #2: ECD2B.ch
 Acq On : 07 Jan 2022 19:25
 Operator : AR\AJ
 Sample : N1065-38MSD
 Misc :
 ALS Vial : 24 Sample Multiplier: 1

Instrument :
 ECD_L
 ClientSampleId :

Integration File signal 1: autoint1.e
 Integration File signal 2: autoint2.e
 Quant Time: Jan 07 23:43:08 2022
 Quant Method : Z:\pestpcbsrv\HPCHEM1\ECD_L\methods\PL010422.M
 Quant Title : GC Extractables
 QLast Update : Thu Jan 06 10:33:37 2022
 Response via : Initial Calibration
 Integrator: ChemStation

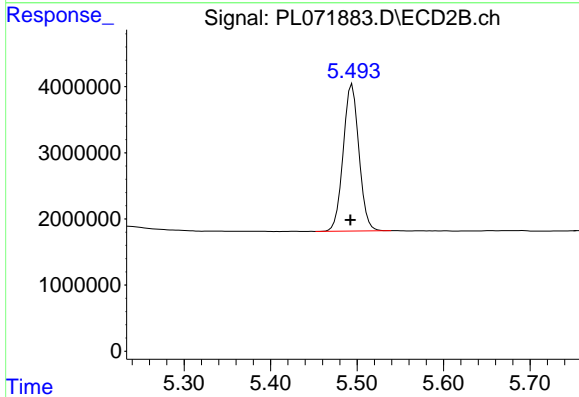
Volume Inj. : 1 µl
 Signal #1 Phase : ZB-MR2 Signal #2 Phase: ZB-MR1
 Signal #1 Info : 30M x 0.32mm x0.2 Signal #2 Info : 30M x 0.32mm x0.5µm



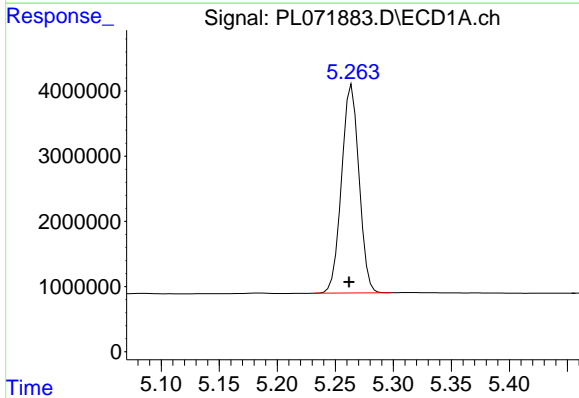


#1 Tetrachloro-m-xylene
 R.T.: 4.558 min
 Delta R.T.: 0.002 min
 Response: 10091626
 Conc: 21.85 ng/ml

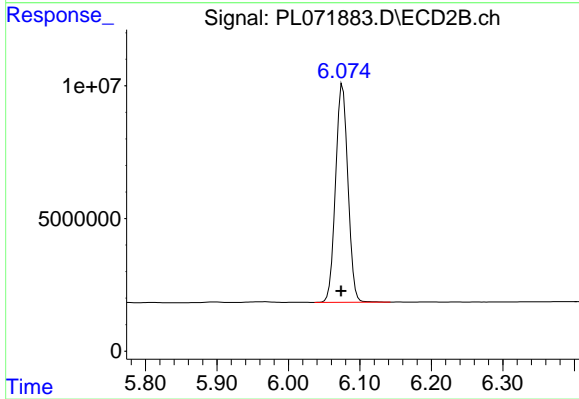
Instrument :
 ECD_L
 ClientSampleId :



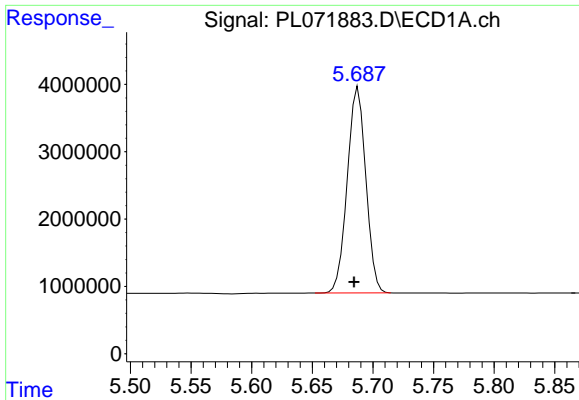
#1 Tetrachloro-m-xylene
 R.T.: 5.494 min
 Delta R.T.: 0.002 min
 Response: 27863736
 Conc: 22.68 ng/ml



#2 alpha-BHC
 R.T.: 5.264 min
 Delta R.T.: 0.003 min
 Response: 33447018
 Conc: 54.17 ng/ml



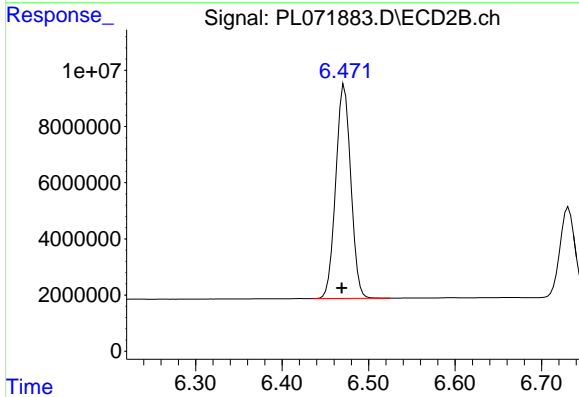
#2 alpha-BHC
 R.T.: 6.076 min
 Delta R.T.: 0.002 min
 Response: 98561506
 Conc: 56.53 ng/ml



#3 gamma-BHC (Lindane)

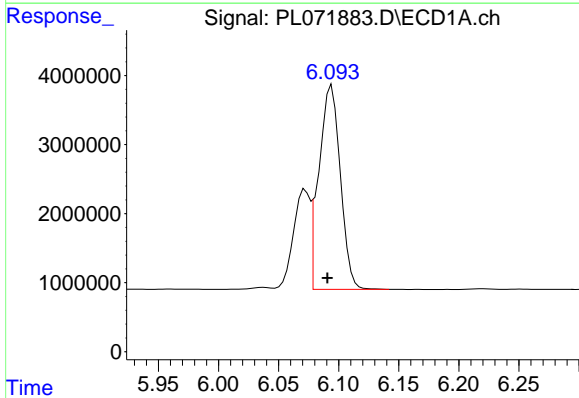
R.T.: 5.688 min
 Delta R.T.: 0.003 min
 Response: 32608827
 Conc: 53.57 ng/ml

Instrument :
 ECD_L
 ClientSampleId :



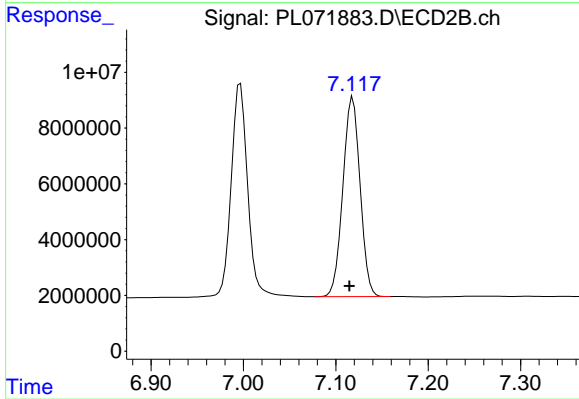
#3 gamma-BHC (Lindane)

R.T.: 6.472 min
 Delta R.T.: 0.003 min
 Response: 91617089
 Conc: 56.64 ng/ml



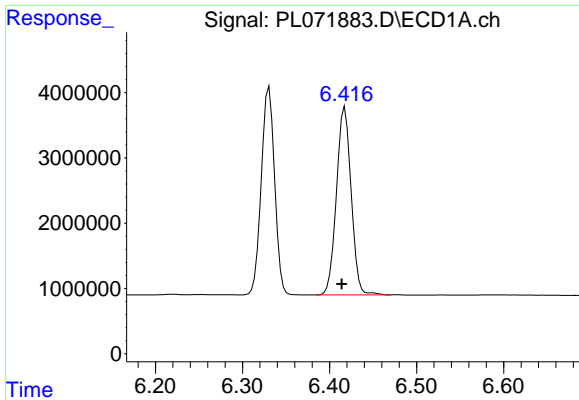
#4 Heptachlor

R.T.: 6.094 min
 Delta R.T.: 0.004 min
 Response: 36795180
 Conc: 53.90 ng/ml



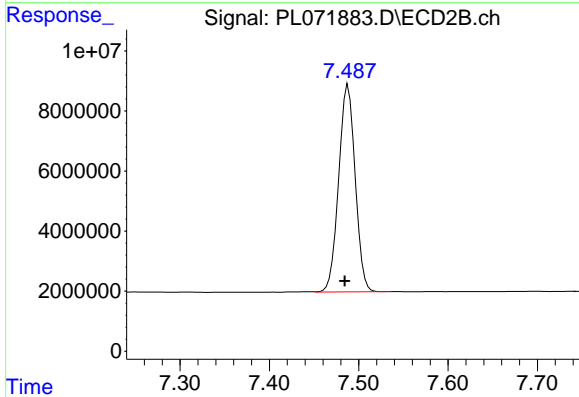
#4 Heptachlor

R.T.: 7.119 min
 Delta R.T.: 0.004 min
 Response: 92586361
 Conc: 57.78 ng/ml

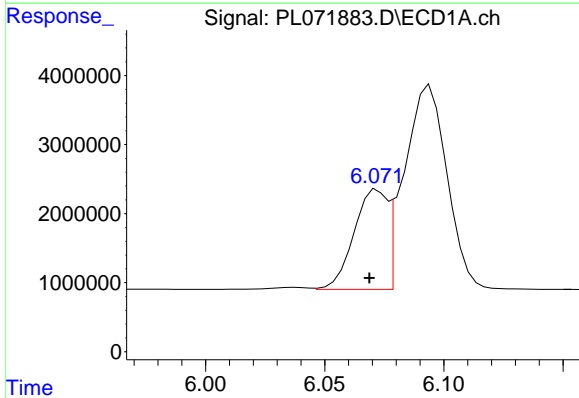


#5 Aldrin
 R.T.: 6.418 min
 Delta R.T.: 0.004 min
 Response: 33822898
 Conc: 53.72 ng/ml

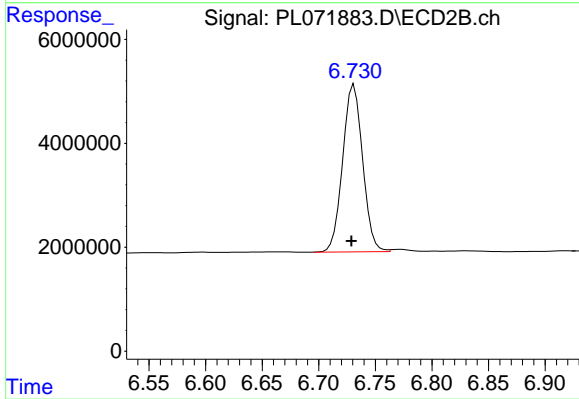
Instrument :
 ECD_L
 ClientSampleId :



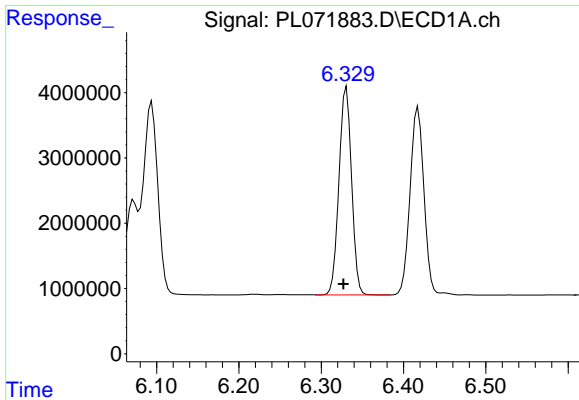
#5 Aldrin
 R.T.: 7.488 min
 Delta R.T.: 0.004 min
 Response: 88463147
 Conc: 57.42 ng/ml



#6 beta-BHC
 R.T.: 6.072 min
 Delta R.T.: 0.004 min
 Response: 13926516
 Conc: 51.47 ng/ml



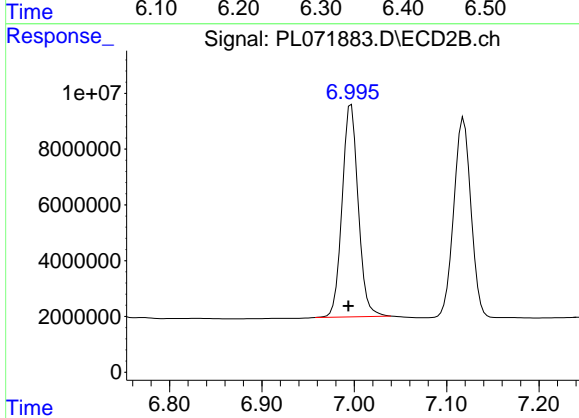
#6 beta-BHC
 R.T.: 6.731 min
 Delta R.T.: 0.003 min
 Response: 39457169
 Conc: 55.22 ng/ml



#7 delta-BHC

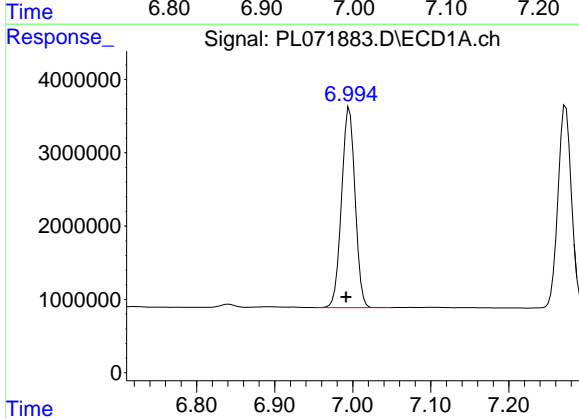
R.T.: 6.331 min
 Delta R.T.: 0.004 min
 Response: 33825898
 Conc: 54.09 ng/ml

Instrument :
 ECD_L
 ClientSampleId :



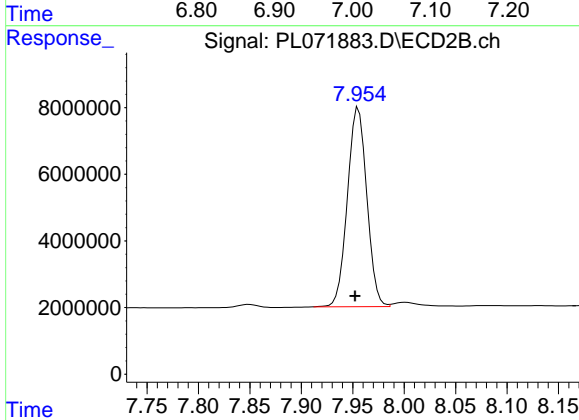
#7 delta-BHC

R.T.: 6.997 min
 Delta R.T.: 0.003 min
 Response: 92253630
 Conc: 60.10 ng/ml



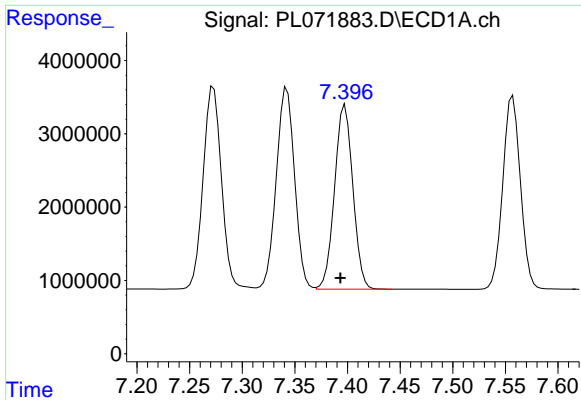
#8 Heptachlor epoxide

R.T.: 6.996 min
 Delta R.T.: 0.004 min
 Response: 32764765
 Conc: 53.71 ng/ml



#8 Heptachlor epoxide

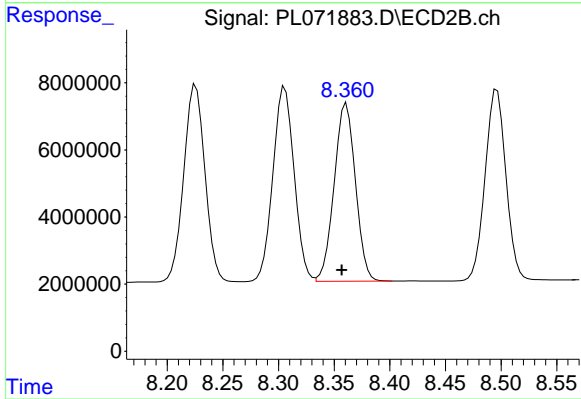
R.T.: 7.956 min
 Delta R.T.: 0.003 min
 Response: 78478568
 Conc: 56.16 ng/ml



#9 Endosulfan I

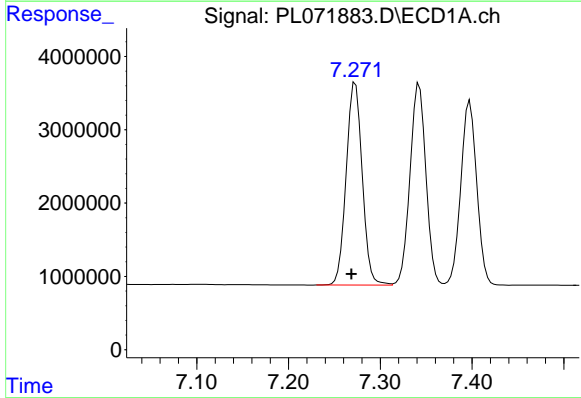
R.T.: 7.398 min
 Delta R.T.: 0.004 min
 Response: 30418368
 Conc: 53.71 ng/ml

Instrument :
 ECD_L
 ClientSampleId :



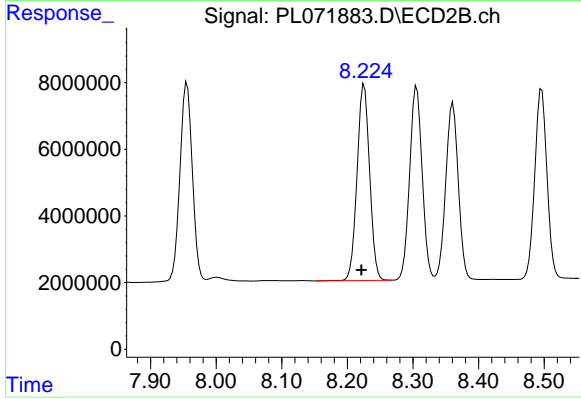
#9 Endosulfan I

R.T.: 8.361 min
 Delta R.T.: 0.004 min
 Response: 70607779
 Conc: 57.01 ng/ml



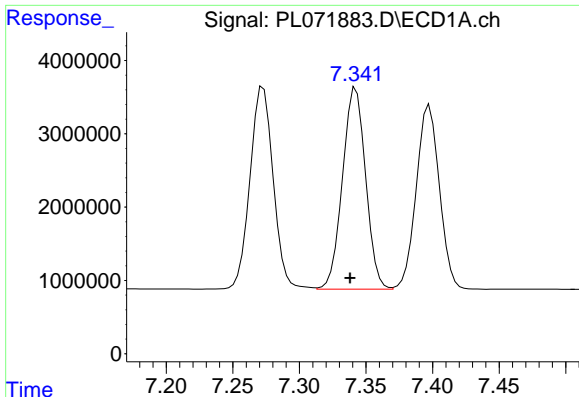
#10 gamma-Chlordane

R.T.: 7.273 min
 Delta R.T.: 0.004 min
 Response: 33516099
 Conc: 54.05 ng/ml



#10 gamma-Chlordane

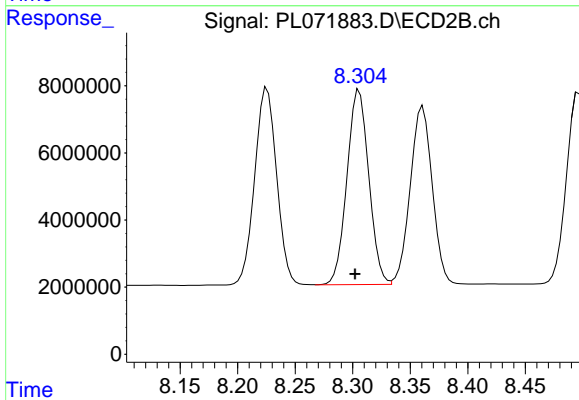
R.T.: 8.226 min
 Delta R.T.: 0.004 min
 Response: 78200998
 Conc: 57.19 ng/ml



#11 alpha-Chlordane

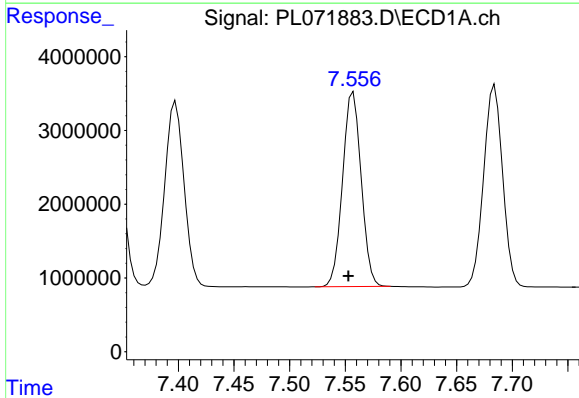
R.T.: 7.342 min
 Delta R.T.: 0.004 min
 Response: 33275330
 Conc: 53.74 ng/ml

Instrument :
 ECD_L
 ClientSampleId :



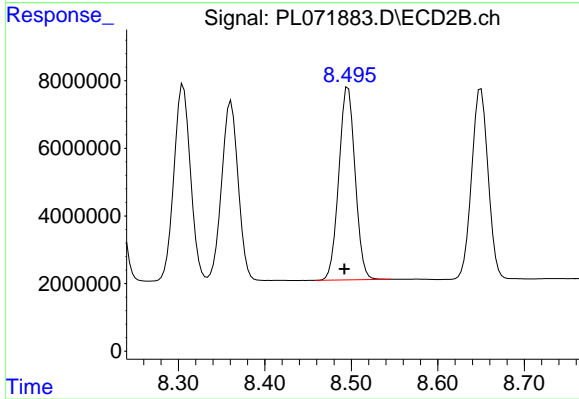
#11 alpha-Chlordane

R.T.: 8.306 min
 Delta R.T.: 0.004 min
 Response: 77182032
 Conc: 57.99 ng/ml



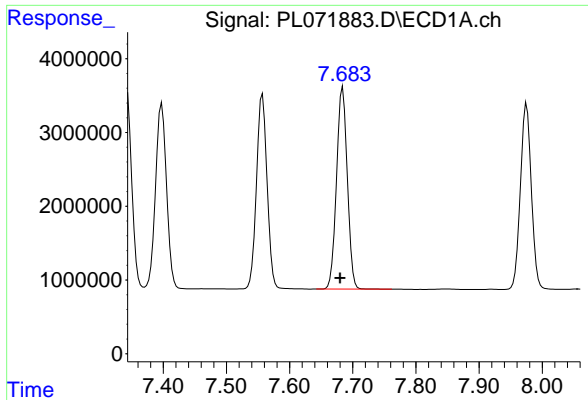
#12 4,4'-DDE

R.T.: 7.557 min
 Delta R.T.: 0.004 min
 Response: 30720723
 Conc: 55.41 ng/ml



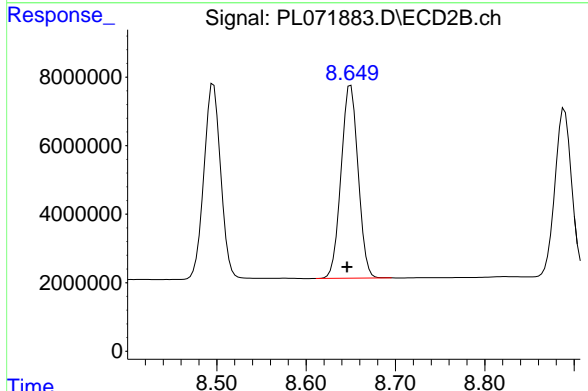
#12 4,4'-DDE

R.T.: 8.496 min
 Delta R.T.: 0.004 min
 Response: 74277402
 Conc: 59.01 ng/ml

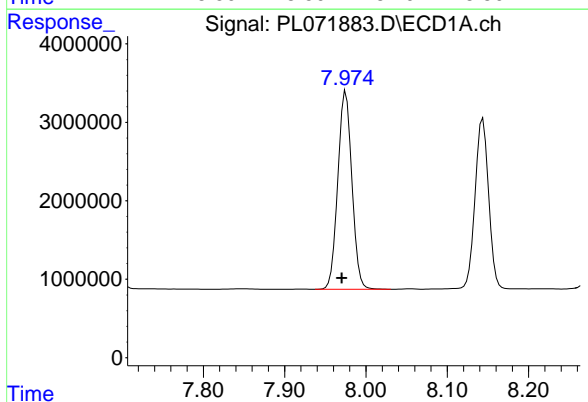


#13 Dieldrin
 R.T.: 7.684 min
 Delta R.T.: 0.004 min
 Response: 32570726
 Conc: 54.00 ng/ml

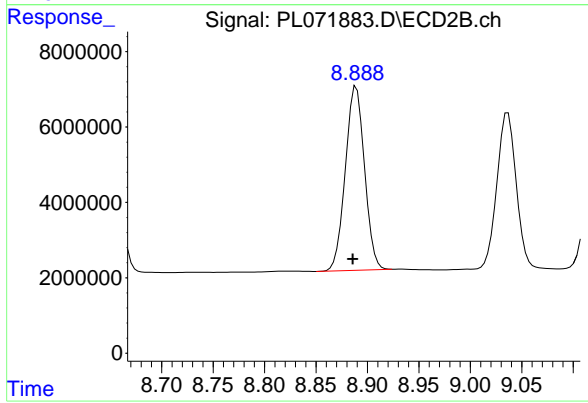
Instrument :
 ECD_L
 ClientSampleId :



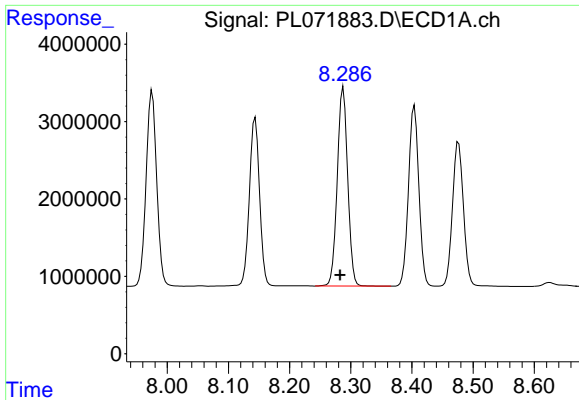
#13 Dieldrin
 R.T.: 8.650 min
 Delta R.T.: 0.004 min
 Response: 74581649
 Conc: 56.85 ng/ml



#14 Endrin
 R.T.: 7.975 min
 Delta R.T.: 0.005 min
 Response: 30385627
 Conc: 57.50 ng/ml



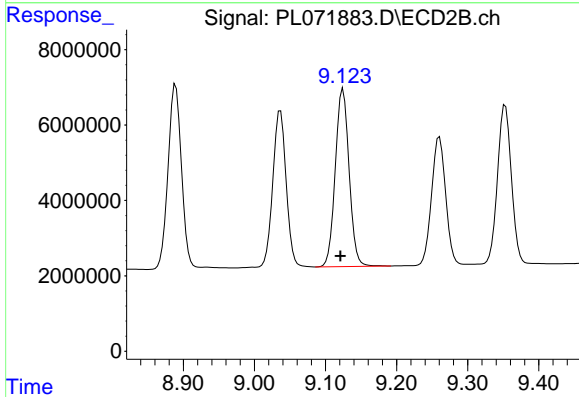
#14 Endrin
 R.T.: 8.889 min
 Delta R.T.: 0.004 min
 Response: 63422627
 Conc: 61.28 ng/ml



#15 Endosulfan II

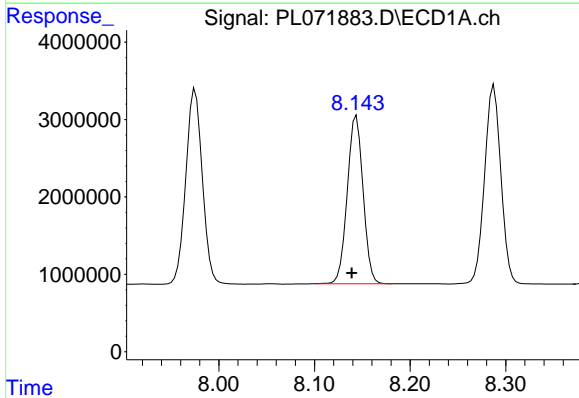
R.T.: 8.288 min
 Delta R.T.: 0.005 min
 Response: 30403639
 Conc: 52.60 ng/ml

Instrument :
 ECD_L
 ClientSampleId :



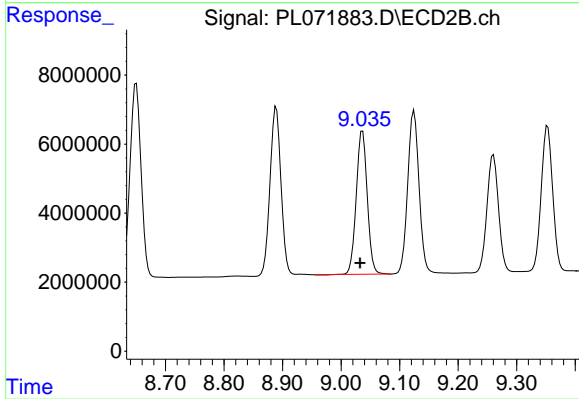
#15 Endosulfan II

R.T.: 9.125 min
 Delta R.T.: 0.004 min
 Response: 63647404
 Conc: 56.68 ng/ml



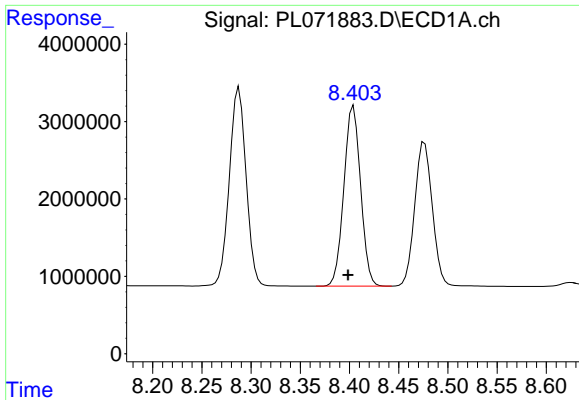
#16 4,4'-DDD

R.T.: 8.144 min
 Delta R.T.: 0.005 min
 Response: 25035413
 Conc: 51.99 ng/ml



#16 4,4'-DDD

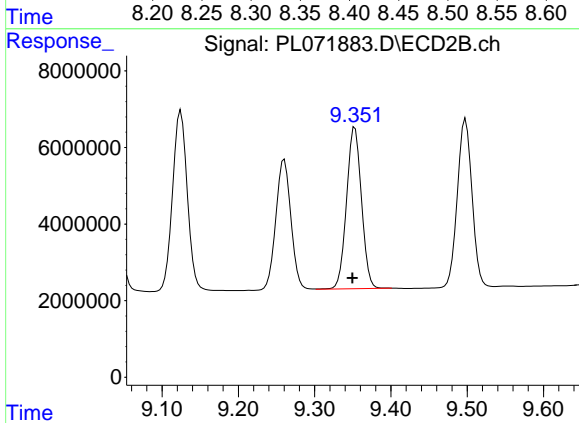
R.T.: 9.037 min
 Delta R.T.: 0.004 min
 Response: 54460213
 Conc: 56.65 ng/ml



#17 4,4'-DDT

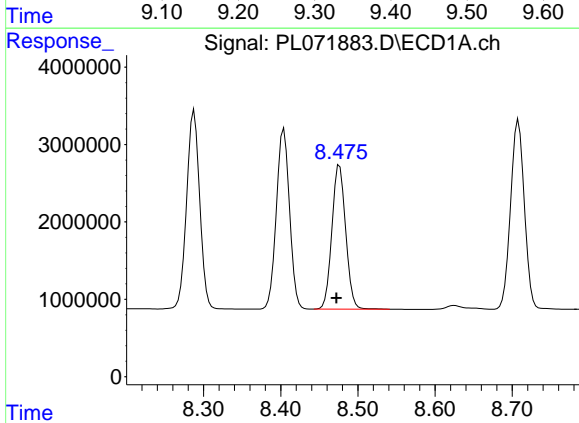
R.T.: 8.404 min
 Delta R.T.: 0.006 min
 Response: 27526920
 Conc: 57.68 ng/ml

Instrument :
 ECD_L
 ClientSampleId :



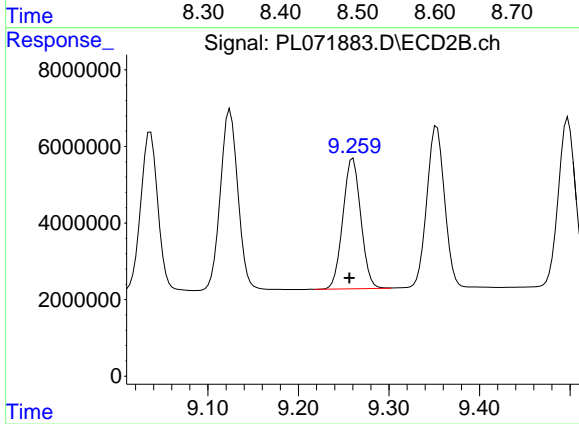
#17 4,4'-DDT

R.T.: 9.353 min
 Delta R.T.: 0.004 min
 Response: 57431242
 Conc: 60.90 ng/ml



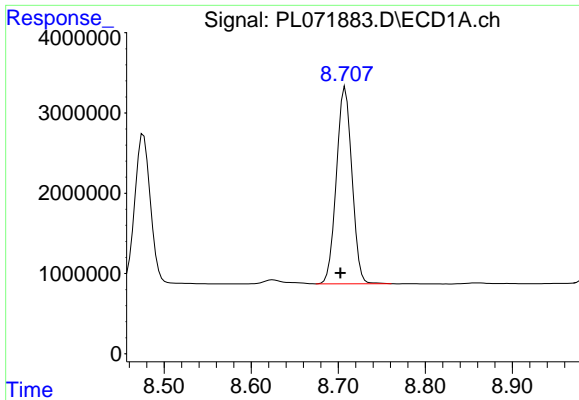
#18 Endrin aldehyde

R.T.: 8.476 min
 Delta R.T.: 0.004 min
 Response: 23168274
 Conc: 51.06 ng/ml



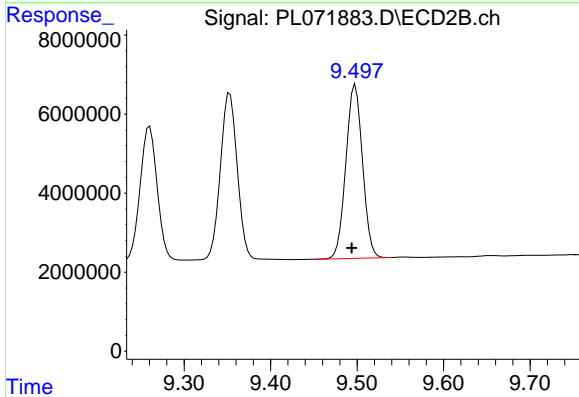
#18 Endrin aldehyde

R.T.: 9.260 min
 Delta R.T.: 0.004 min
 Response: 46880256
 Conc: 55.24 ng/ml

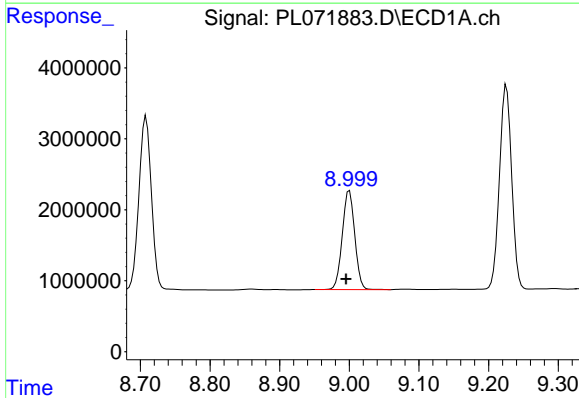


#19 Endosulfan Sulfate
 R.T.: 8.708 min
 Delta R.T.: 0.006 min
 Response: 30441523
 Conc: 52.06 ng/ml

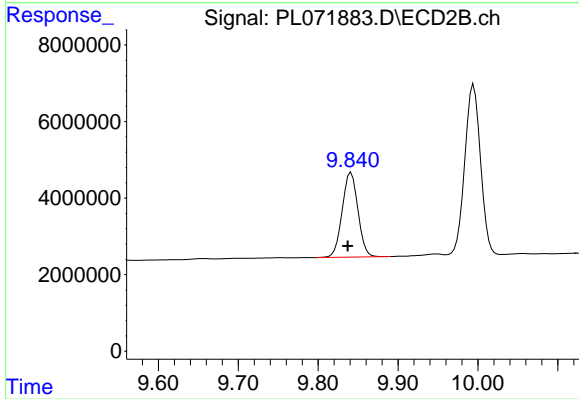
Instrument :
 ECD_L
 ClientSampleId :



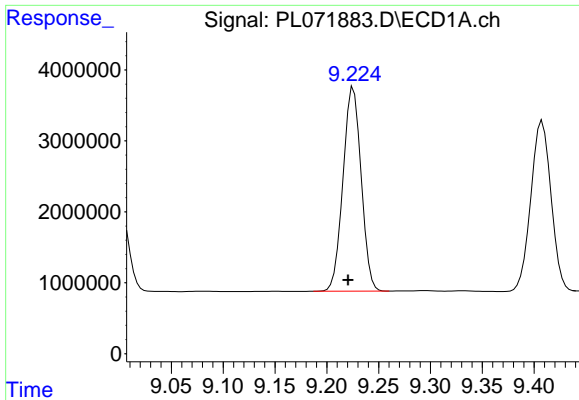
#19 Endosulfan Sulfate
 R.T.: 9.498 min
 Delta R.T.: 0.004 min
 Response: 58656014
 Conc: 56.46 ng/ml



#20 Methoxychlor
 R.T.: 9.000 min
 Delta R.T.: 0.005 min
 Response: 17349937
 Conc: 56.06 ng/ml



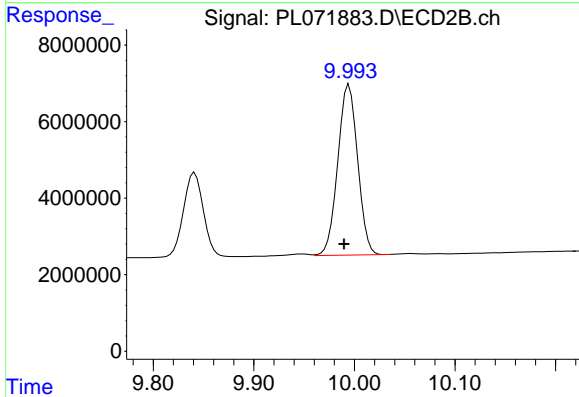
#20 Methoxychlor
 R.T.: 9.841 min
 Delta R.T.: 0.004 min
 Response: 30299498
 Conc: 61.53 ng/ml



#21 Endrin ketone

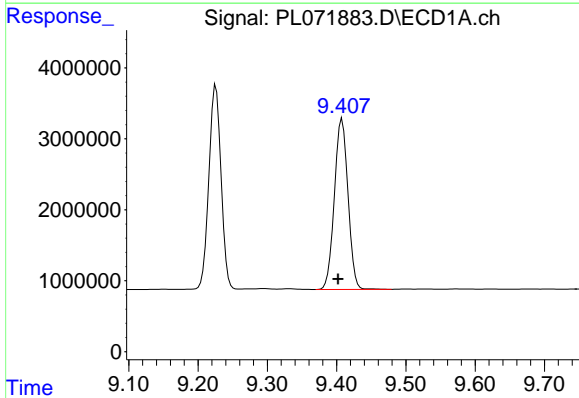
R.T.: 9.226 min
 Delta R.T.: 0.005 min
 Response: 35037685
 Conc: 50.56 ng/ml

Instrument :
 ECD_L
 ClientSampleId :



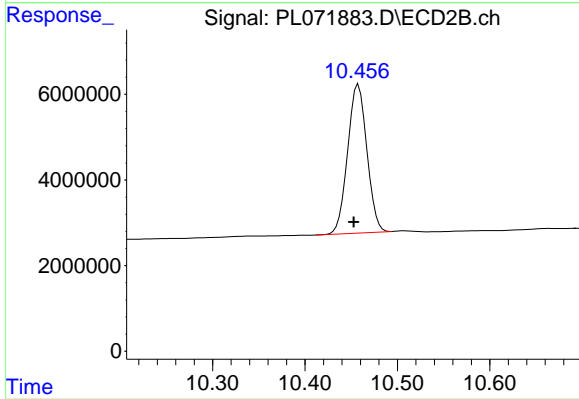
#21 Endrin ketone

R.T.: 9.995 min
 Delta R.T.: 0.005 min
 Response: 61062294
 Conc: 54.11 ng/ml



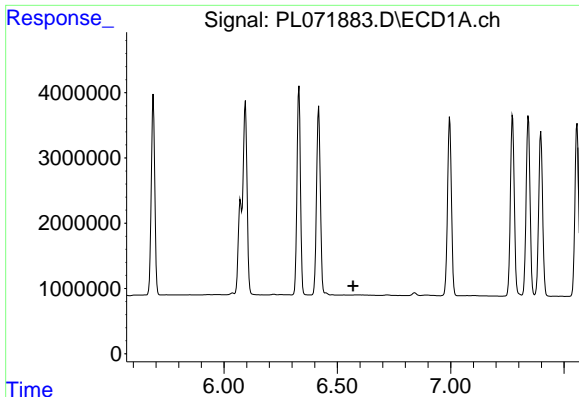
#22 Mirex

R.T.: 9.408 min
 Delta R.T.: 0.006 min
 Response: 32851759
 Conc: 54.76 ng/ml



#22 Mirex

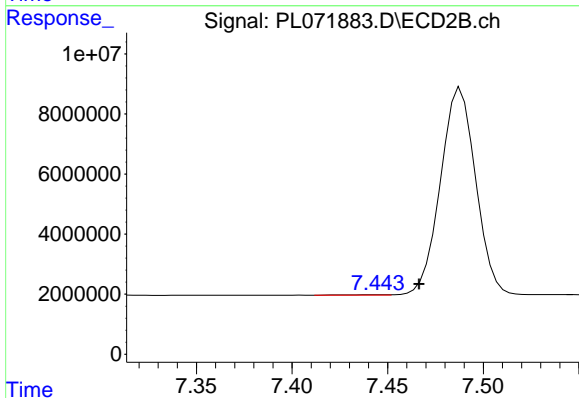
R.T.: 10.458 min
 Delta R.T.: 0.005 min
 Response: 50301351
 Conc: 58.55 ng/ml



#24 Chlordane-2

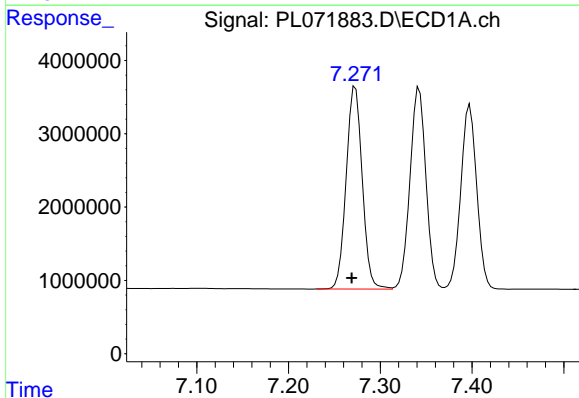
R.T.: 0.000 min
 Exp R.T.: 6.569 min
 Response: 0
 Conc: N.D.

Instrument :
 ECD_L
 ClientSampleId :



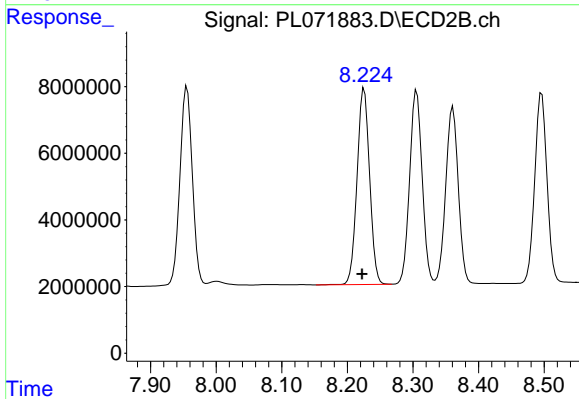
#24 Chlordane-2

R.T.: 7.445 min
 Delta R.T.: -0.021 min
 Response: 174578
 Conc: 3.23 ng/ml



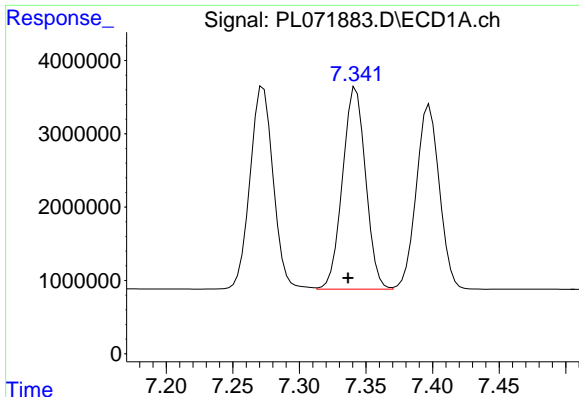
#25 Chlordane-3

R.T.: 7.273 min
 Delta R.T.: 0.004 min
 Response: 33516099
 Conc: 515.79 ng/ml



#25 Chlordane-3

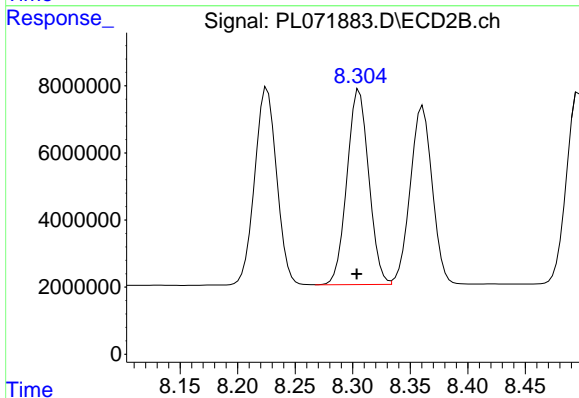
R.T.: 8.226 min
 Delta R.T.: 0.003 min
 Response: 78200998
 Conc: 383.13 ng/ml



#26 Chlordane-4

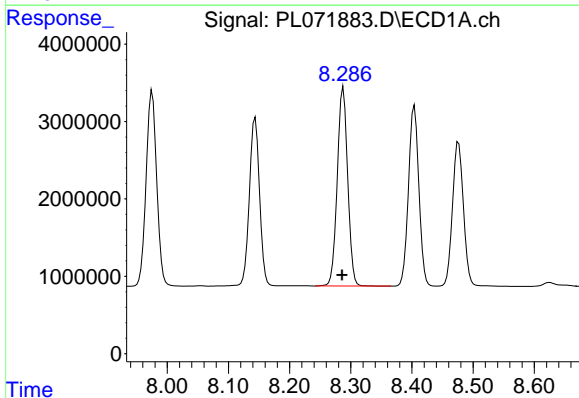
R.T.: 7.342 min
 Delta R.T.: 0.006 min
 Response: 33275330
 Conc: 473.81 ng/ml

Instrument :
 ECD_L
 ClientSampleId :



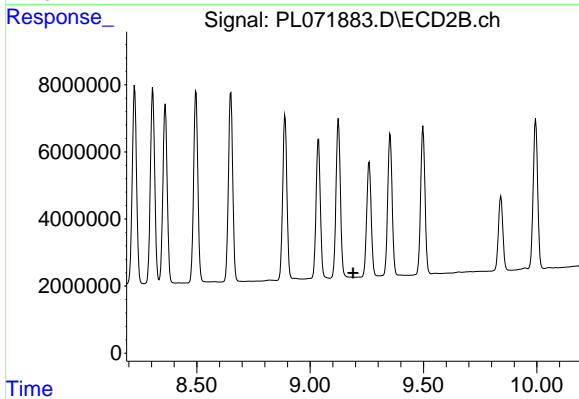
#26 Chlordane-4

R.T.: 8.306 min
 Delta R.T.: 0.002 min
 Response: 77182032
 Conc: 317.07 ng/ml



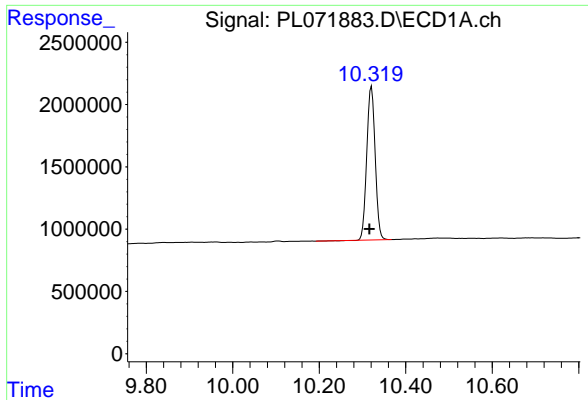
#27 Chlordane-5

R.T.: 8.288 min
 Delta R.T.: 0.002 min
 Response: 30403639
 Conc: 1273.52 ng/ml



#27 Chlordane-5

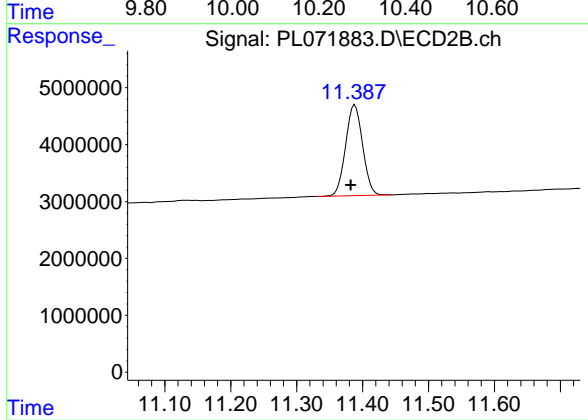
R.T.: 0.000 min
 Exp R.T. : 9.190 min
 Response: 0
 Conc: N.D.



#28 Decachlorobiphenyl

R.T.: 10.321 min
Delta R.T.: 0.005 min
Response: 16647829
Conc: 23.03 ng/ml

Instrument :
ECD_L
ClientSampleId :



#28 Decachlorobiphenyl

R.T.: 11.388 min
Delta R.T.: 0.006 min
Response: 28594375
Conc: 24.13 ng/ml