

Data Path : Z:\pestpcbsrv\HPCHEM1\ECD\_L\Data\PL010722\  
 Data File : PL071887.D  
 Signal(s) : Signal #1: ECD1A.ch Signal #2: ECD2B.ch  
 Acq On : 07 Jan 2022 20:30  
 Operator : AR\AJ  
 Sample : PSTDCCC050  
 Misc :  
 ALS Vial : 4 Sample Multiplier: 1

Instrument :  
 ECD\_L  
 ClientSampleId :

Integration File signal 1: autoint1.e  
 Integration File signal 2: autoint2.e  
 Quant Time: Jan 07 23:44:12 2022  
 Quant Method : Z:\pestpcbsrv\HPCHEM1\ECD\_L\methods\PL010422.M  
 Quant Title : GC Extractables  
 QLast Update : Thu Jan 06 10:33:37 2022  
 Response via : Initial Calibration  
 Integrator: ChemStation

Volume Inj. : 1 µl  
 Signal #1 Phase : ZB-MR2 Signal #2 Phase: ZB-MR1  
 Signal #1 Info : 30M x 0.32mm x0.2 Signal #2 Info : 30M x 0.32mm x0.5µm

Compound	RT#1	RT#2	Resp#1	Resp#2	ng/ml	ng/ml
System Monitoring Compounds						
1) SA Tetrachlo...	4.558	5.494	22168346	62158421	47.989	50.591
28) SA Decachlor...	10.320	11.388	32385122	58102468	44.791	49.031
Target Compounds						
2) A alpha-BHC	5.264	6.076	30323585	89855421	49.110	51.539
3) MA gamma-BHC...	5.687	6.472	29600201	83441330	48.627	51.584
4) MA Heptachlor	6.094	7.118	33061742	83620782	48.430	52.185
5) MB Aldrin	6.418	7.488	30287660	78778508	48.104	51.134
6) B beta-BHC	6.072	6.731	13454635	36363974	49.728	50.894
7) B delta-BHC	6.330	6.997	30706094	83639636	49.103	54.484
8) B Heptachlo...	6.996	7.955	29240106	70075006	47.934	50.149
9) A Endosulfan I	7.398	8.360	27223508	61976658	48.069	50.038
10) B gamma-Chl...	7.272	8.225	29646604	68417548	47.814	50.034
11) B alpha-Chl...	7.342	8.305	29746055	66960713	48.039	50.313
12) B 4,4'-DDE	7.557	8.496	27198292	65723755	49.056	52.217
13) MA Dieldrin	7.684	8.649	28731228	65658838	47.638	50.045
14) MA Endrin	7.975	8.889	26551334	55699043	50.242	53.819
15) B Endosulfa...	8.287	9.125	27184637	57177713	47.029	50.917
16) A 4,4'-DDD	8.143	9.036	22538754	48634671	46.806	50.589
17) MA 4,4'-DDT	8.403	9.353	24627295	51774869	51.602	54.903
18) B Endrin al...	8.476	9.260	21155053	42477307	46.621	50.056
19) B Endosulfa...	8.707	9.498	27115203	52990943	46.372	51.009
20) A Methoxychlor	9.000	9.841	15829971	27705484	51.147	56.264
21) B Endrin ke...	9.225	9.994	31354849	55894670	45.245	49.529
22) Mirex	9.407	10.457	27576583	42400683	45.971	49.356
24) Chlordane-2	0.000	7.488f	0	78778508	N.D.	1455.415 #
25) Chlordane-3	7.272	8.225	29646604	68417548	456.243	335.196 #
26) Chlordane-4	7.342	8.305	29746055	66960713	423.556	275.083 #
27) Chlordane-5	8.287	0.000	27184637	0	1138.683	N.D. #

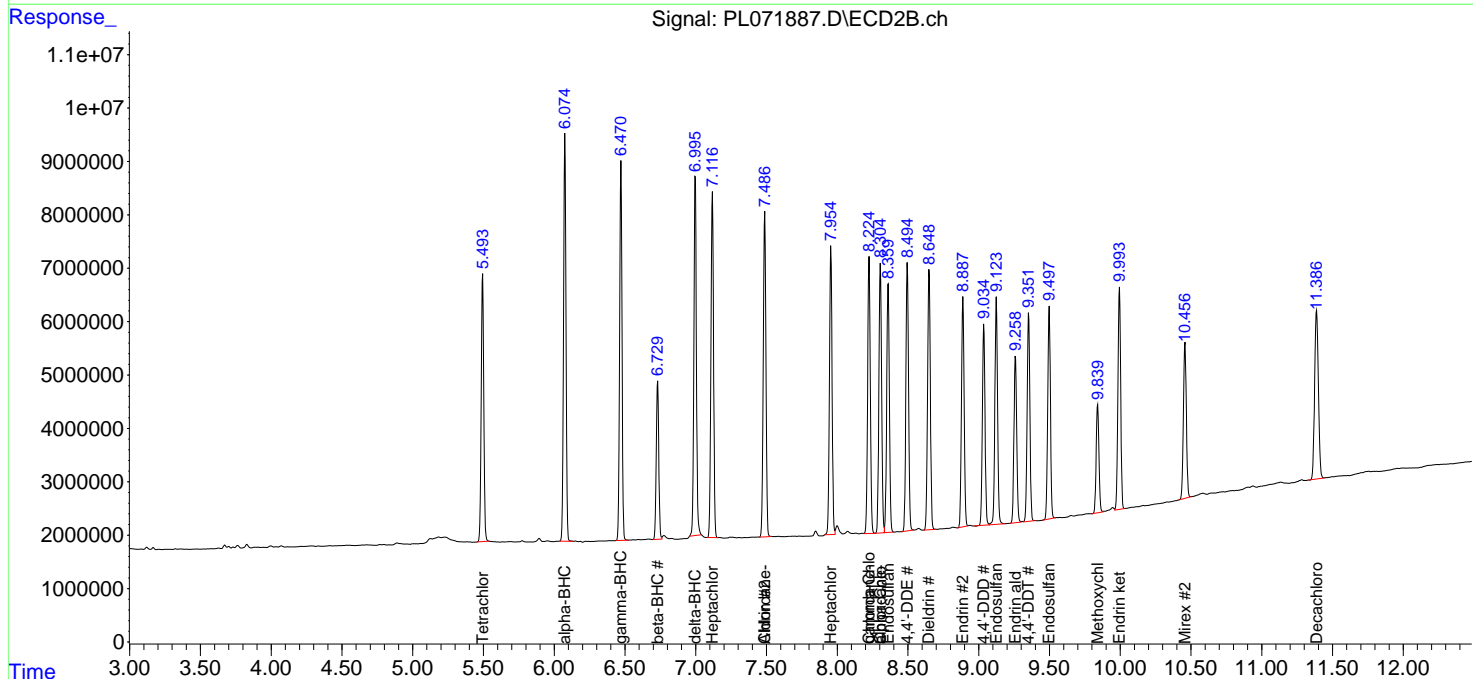
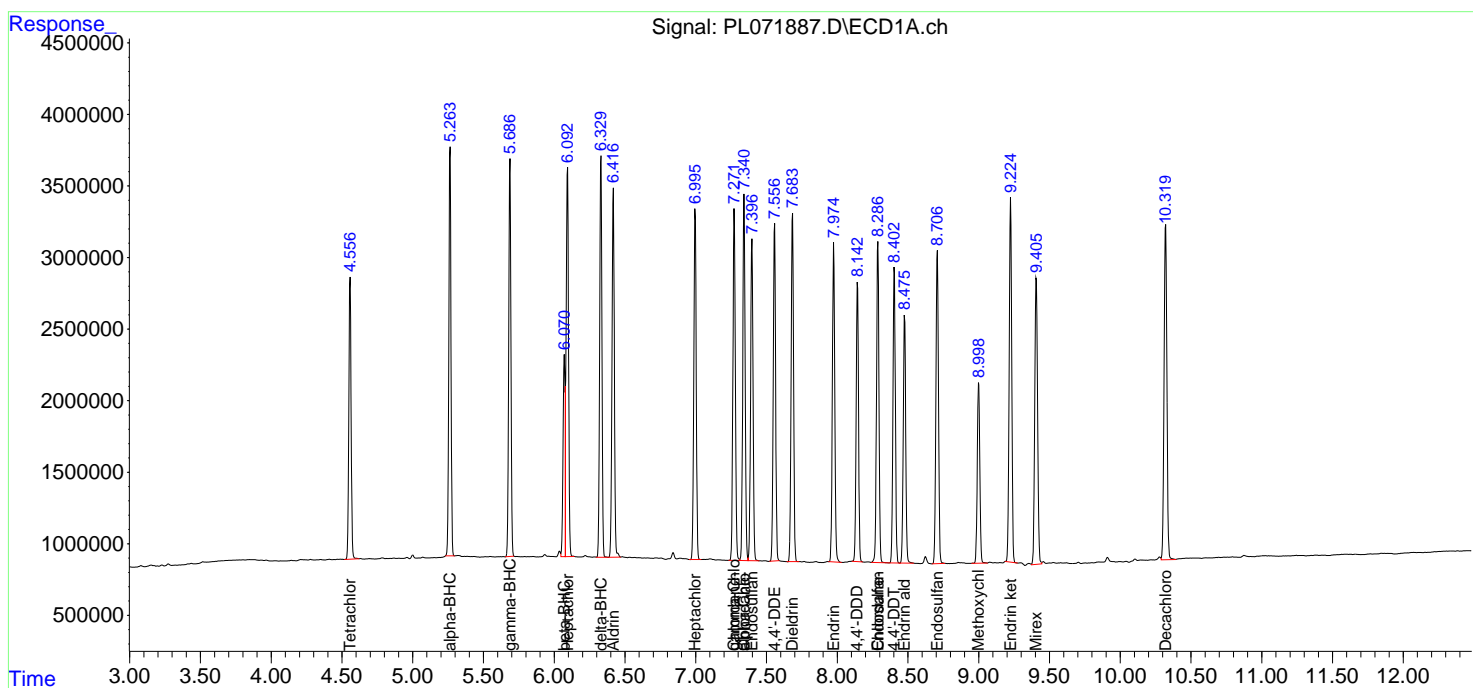
(f)=RT Delta > 1/2 Window (#)=Amounts differ by > 25% (m)=manual int.

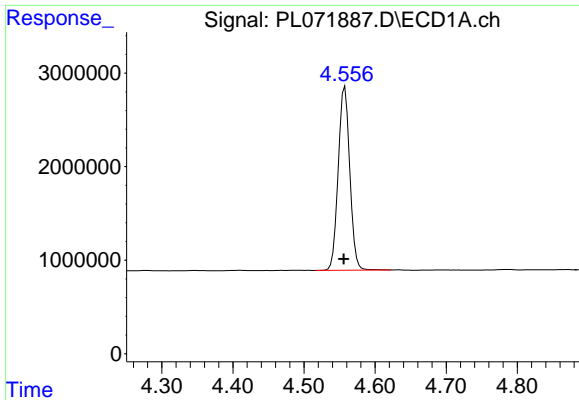
Data Path : Z:\pestpcbsrv\HPCHEM1\ECD\_L\Data\PL010722\  
 Data File : PL071887.D  
 Signal(s) : Signal #1: ECD1A.ch Signal #2: ECD2B.ch  
 Acq On : 07 Jan 2022 20:30  
 Operator : AR\AJ  
 Sample : PSTDCCC050  
 Misc :  
 ALS Vial : 4 Sample Multiplier: 1

Instrument :  
 ECD\_L  
 ClientSampleId :

Integration File signal 1: autoint1.e  
 Integration File signal 2: autoint2.e  
 Quant Time: Jan 07 23:44:12 2022  
 Quant Method : Z:\pestpcbsrv\HPCHEM1\ECD\_L\methods\PL010422.M  
 Quant Title : GC Extractables  
 QLast Update : Thu Jan 06 10:33:37 2022  
 Response via : Initial Calibration  
 Integrator: ChemStation

Volume Inj. : 1 µl  
 Signal #1 Phase : ZB-MR2 Signal #2 Phase: ZB-MR1  
 Signal #1 Info : 30M x 0.32mm x0.2 Signal #2 Info : 30M x 0.32mm x0.5µm

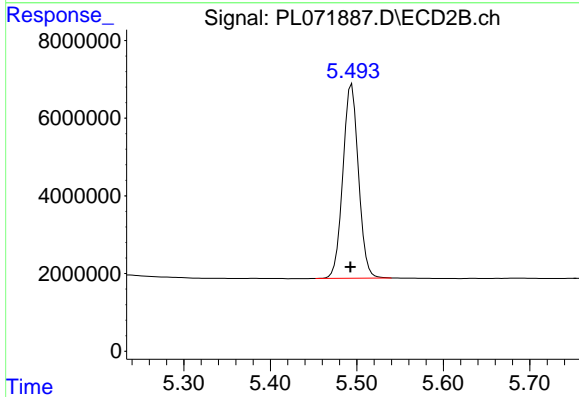




#1 Tetrachloro-m-xylene

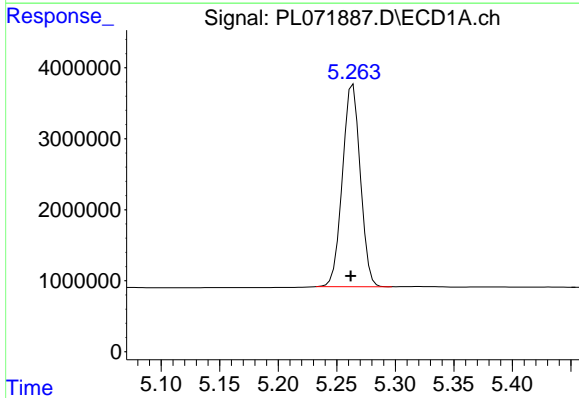
R.T.: 4.558 min  
 Delta R.T.: 0.002 min  
 Response: 22168346  
 Conc: 47.99 ng/ml

Instrument :  
 ECD\_L  
 ClientSampleId :



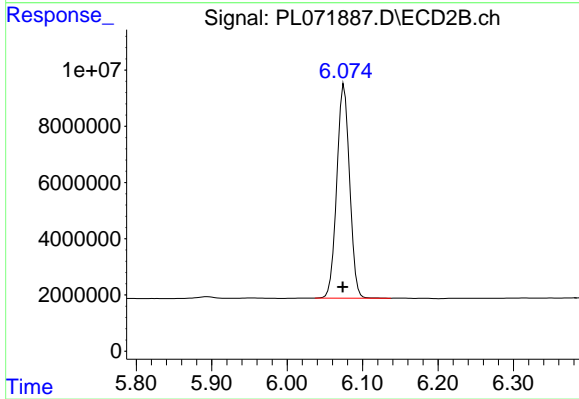
#1 Tetrachloro-m-xylene

R.T.: 5.494 min  
 Delta R.T.: 0.002 min  
 Response: 62158421  
 Conc: 50.59 ng/ml



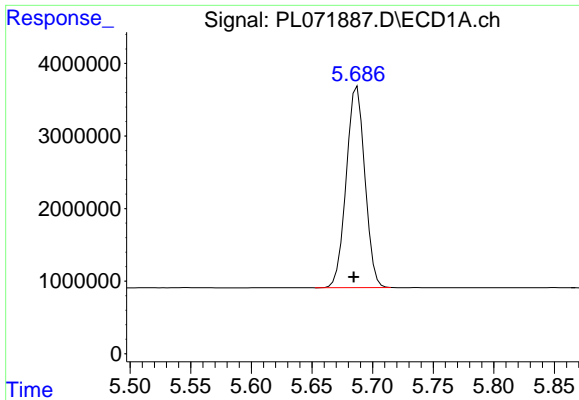
#2 alpha-BHC

R.T.: 5.264 min  
 Delta R.T.: 0.002 min  
 Response: 30323585  
 Conc: 49.11 ng/ml



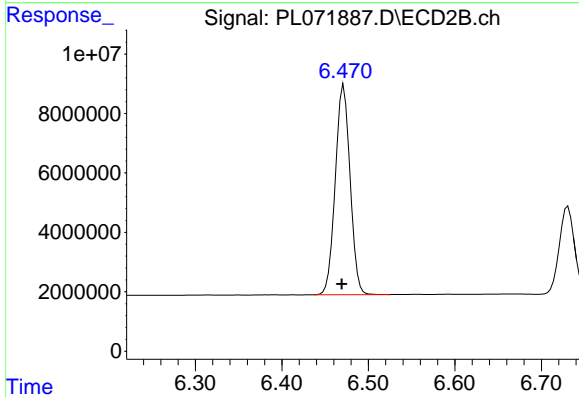
#2 alpha-BHC

R.T.: 6.076 min  
 Delta R.T.: 0.002 min  
 Response: 89855421  
 Conc: 51.54 ng/ml

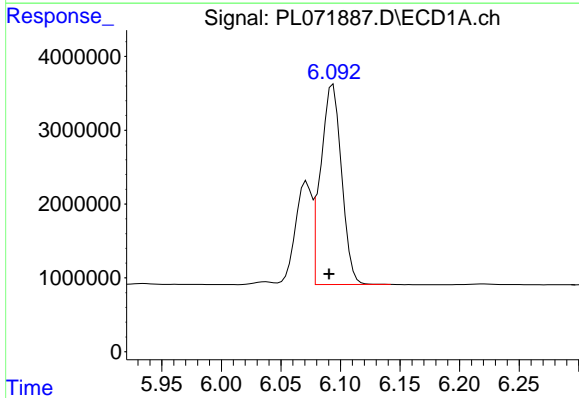


#3 gamma-BHC (Lindane)  
 R.T.: 5.687 min  
 Delta R.T.: 0.003 min  
 Response: 29600201  
 Conc: 48.63 ng/ml

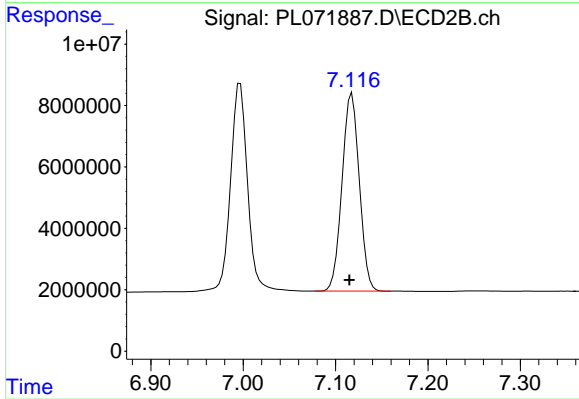
Instrument :  
 ECD\_L  
 ClientSampleId :



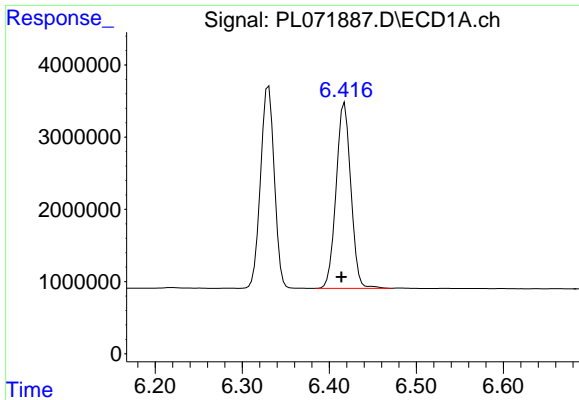
#3 gamma-BHC (Lindane)  
 R.T.: 6.472 min  
 Delta R.T.: 0.002 min  
 Response: 83441330  
 Conc: 51.58 ng/ml



#4 Heptachlor  
 R.T.: 6.094 min  
 Delta R.T.: 0.003 min  
 Response: 33061742  
 Conc: 48.43 ng/ml

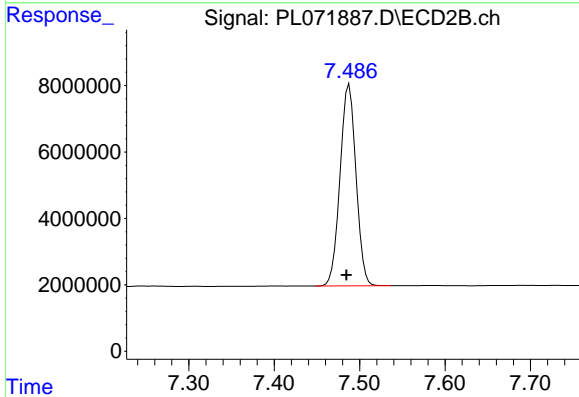


#4 Heptachlor  
 R.T.: 7.118 min  
 Delta R.T.: 0.003 min  
 Response: 83620782  
 Conc: 52.18 ng/ml

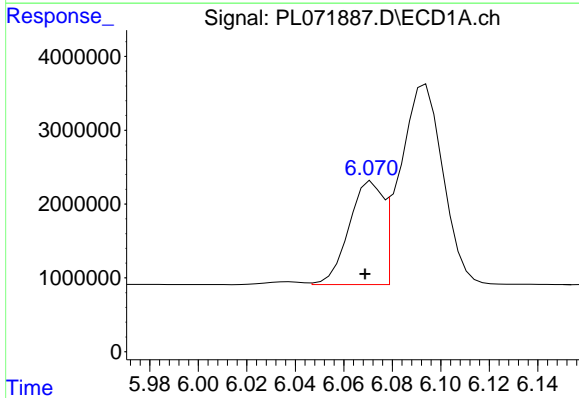


#5 Aldrin  
 R.T.: 6.418 min  
 Delta R.T.: 0.004 min  
 Response: 30287660  
 Conc: 48.10 ng/ml

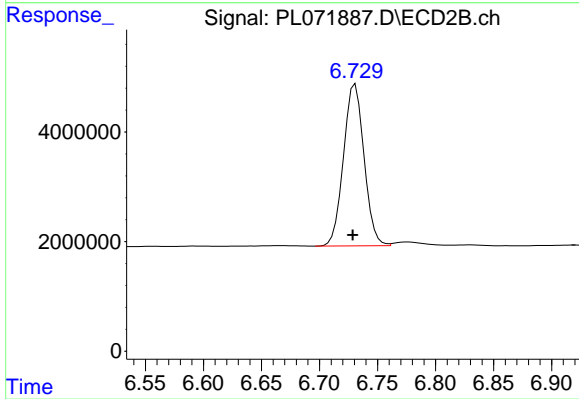
Instrument :  
 ECD\_L  
 ClientSampleId :



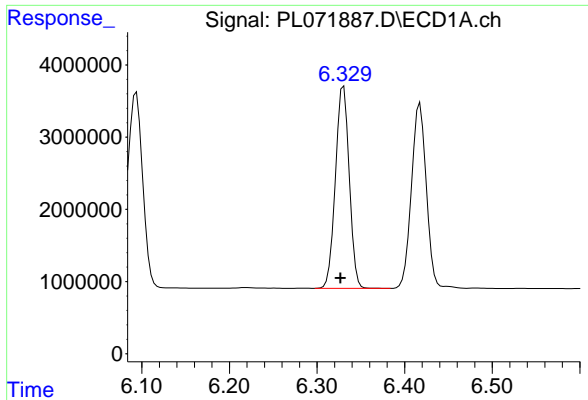
#5 Aldrin  
 R.T.: 7.488 min  
 Delta R.T.: 0.003 min  
 Response: 78778508  
 Conc: 51.13 ng/ml



#6 beta-BHC  
 R.T.: 6.072 min  
 Delta R.T.: 0.003 min  
 Response: 13454635  
 Conc: 49.73 ng/ml



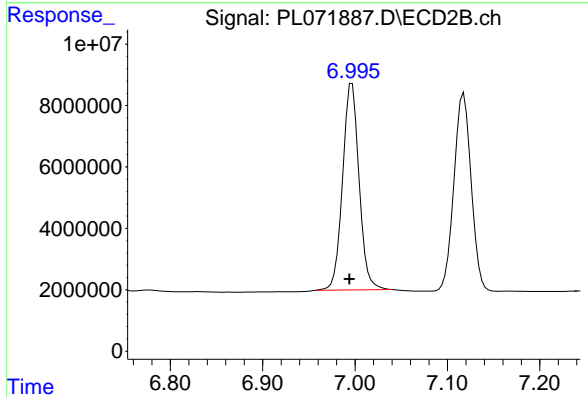
#6 beta-BHC  
 R.T.: 6.731 min  
 Delta R.T.: 0.002 min  
 Response: 36363974  
 Conc: 50.89 ng/ml



#7 delta-BHC

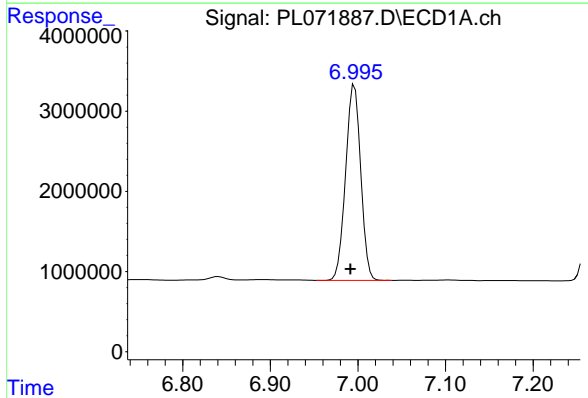
R.T.: 6.330 min  
 Delta R.T.: 0.004 min  
 Response: 30706094  
 Conc: 49.10 ng/ml

Instrument :  
 ECD\_L  
 ClientSampleId :



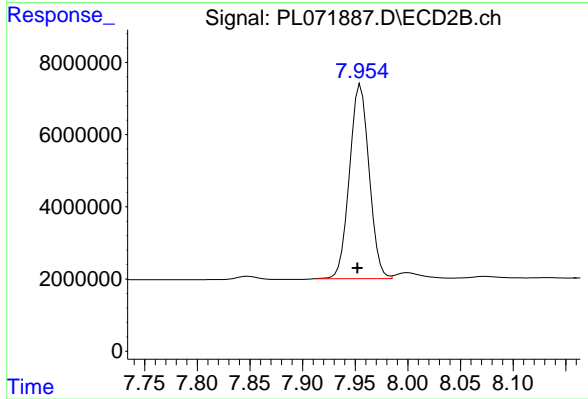
#7 delta-BHC

R.T.: 6.997 min  
 Delta R.T.: 0.003 min  
 Response: 83639636  
 Conc: 54.48 ng/ml



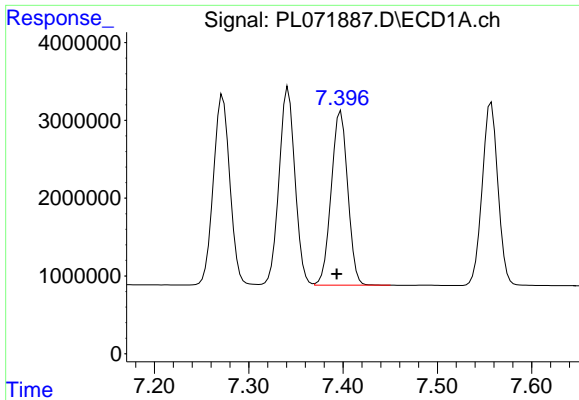
#8 Heptachlor epoxide

R.T.: 6.996 min  
 Delta R.T.: 0.005 min  
 Response: 29240106  
 Conc: 47.93 ng/ml



#8 Heptachlor epoxide

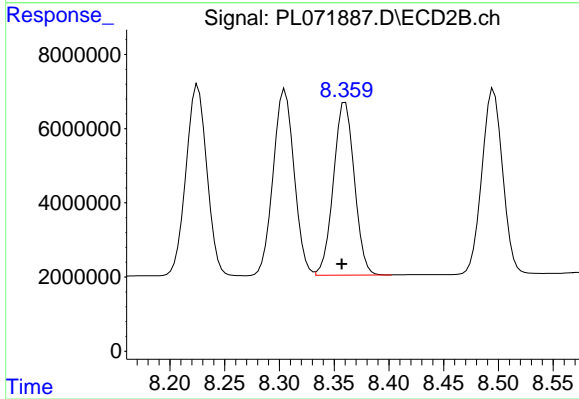
R.T.: 7.955 min  
 Delta R.T.: 0.003 min  
 Response: 70075006  
 Conc: 50.15 ng/ml



#9 Endosulfan I

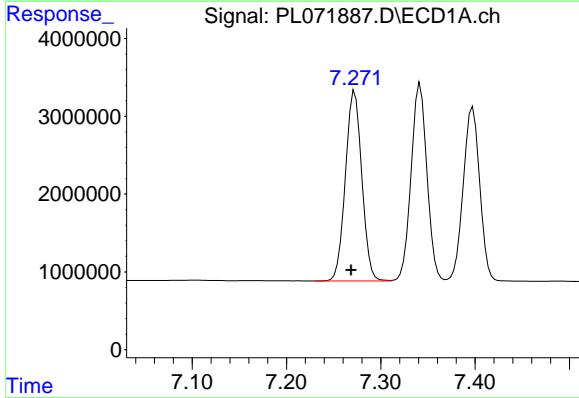
R.T.: 7.398 min  
 Delta R.T.: 0.004 min  
 Response: 27223508  
 Conc: 48.07 ng/ml

Instrument :  
 ECD\_L  
 ClientSampleId :



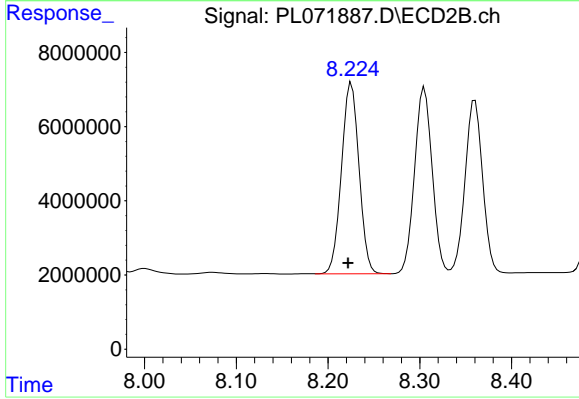
#9 Endosulfan I

R.T.: 8.360 min  
 Delta R.T.: 0.003 min  
 Response: 61976658  
 Conc: 50.04 ng/ml



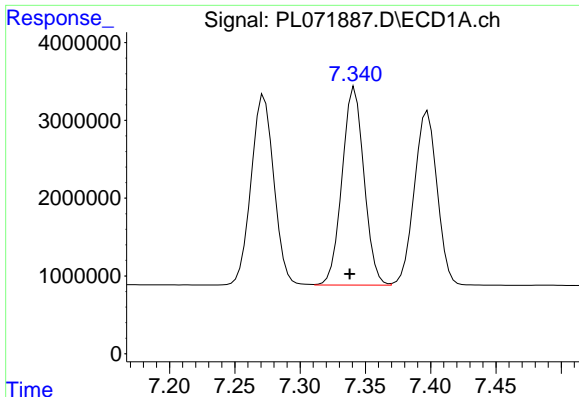
#10 gamma-Chlordane

R.T.: 7.272 min  
 Delta R.T.: 0.004 min  
 Response: 29646604  
 Conc: 47.81 ng/ml



#10 gamma-Chlordane

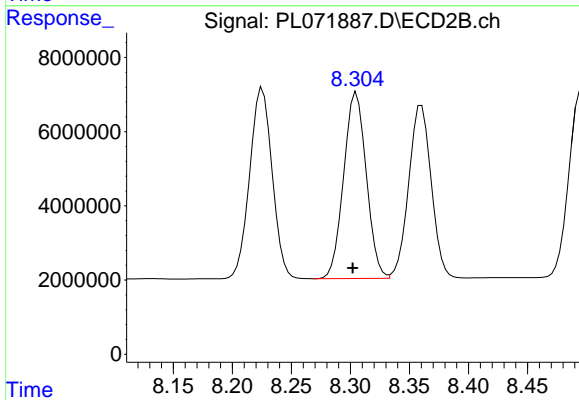
R.T.: 8.225 min  
 Delta R.T.: 0.004 min  
 Response: 68417548  
 Conc: 50.03 ng/ml



#11 alpha-Chlordane

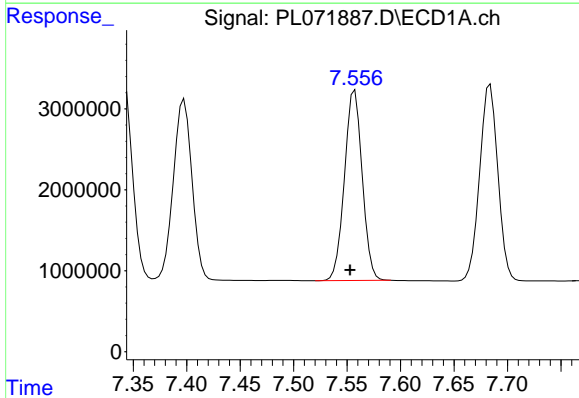
R.T.: 7.342 min  
 Delta R.T.: 0.004 min  
 Response: 29746055  
 Conc: 48.04 ng/ml

Instrument :  
 ECD\_L  
 ClientSampleId :



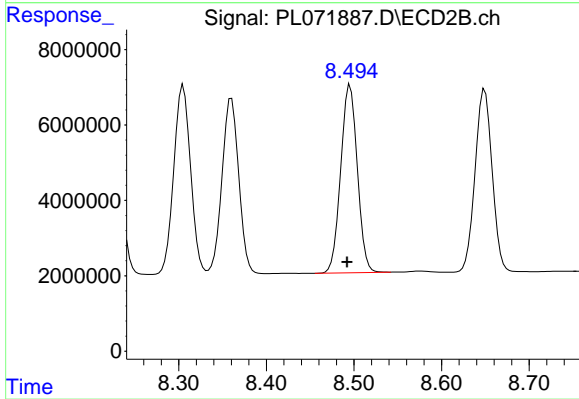
#11 alpha-Chlordane

R.T.: 8.305 min  
 Delta R.T.: 0.003 min  
 Response: 66960713  
 Conc: 50.31 ng/ml



#12 4,4'-DDE

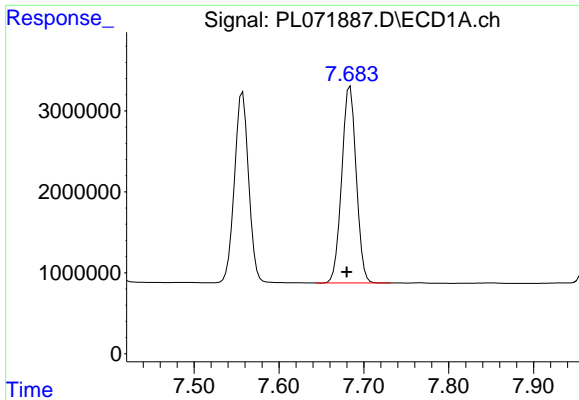
R.T.: 7.557 min  
 Delta R.T.: 0.005 min  
 Response: 27198292  
 Conc: 49.06 ng/ml



#12 4,4'-DDE

R.T.: 8.496 min  
 Delta R.T.: 0.003 min  
 Response: 65723755  
 Conc: 52.22 ng/ml

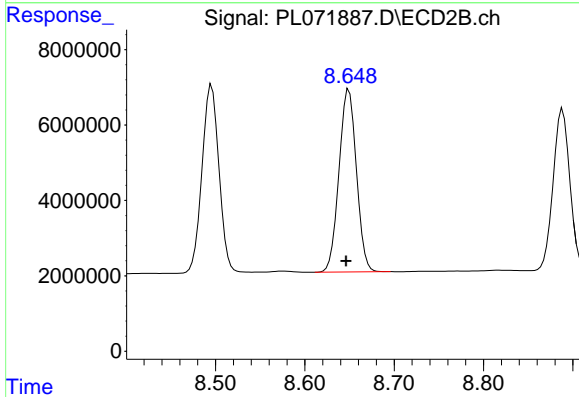




#13 Dieldrin

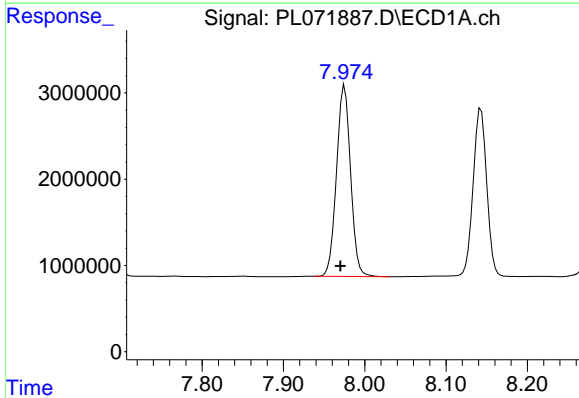
R.T.: 7.684 min  
 Delta R.T.: 0.004 min  
 Response: 28731228  
 Conc: 47.64 ng/ml

Instrument :  
 ECD\_L  
 ClientSampleId :



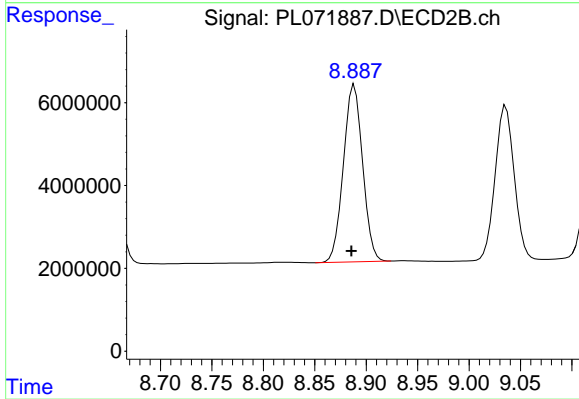
#13 Dieldrin

R.T.: 8.649 min  
 Delta R.T.: 0.003 min  
 Response: 65658838  
 Conc: 50.05 ng/ml



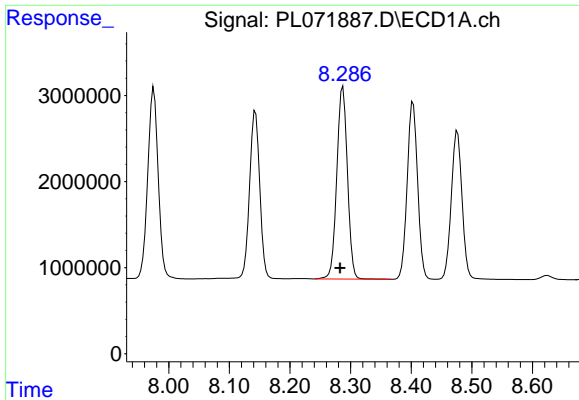
#14 Endrin

R.T.: 7.975 min  
 Delta R.T.: 0.005 min  
 Response: 26551334  
 Conc: 50.24 ng/ml



#14 Endrin

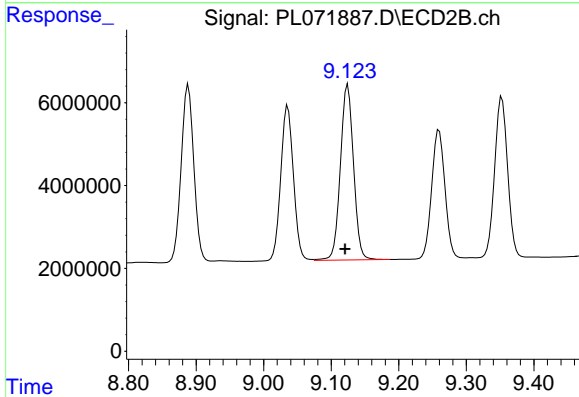
R.T.: 8.889 min  
 Delta R.T.: 0.003 min  
 Response: 55699043  
 Conc: 53.82 ng/ml



#15 Endosulfan II

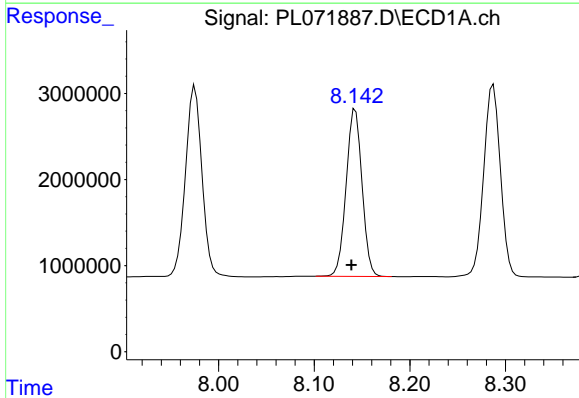
R.T.: 8.287 min  
 Delta R.T.: 0.005 min  
 Response: 27184637  
 Conc: 47.03 ng/ml

Instrument :  
 ECD\_L  
 ClientSampleId :



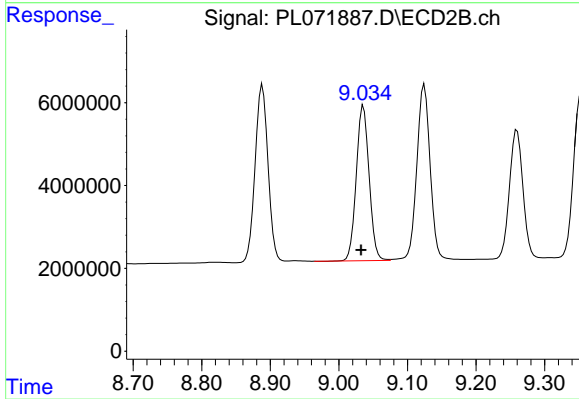
#15 Endosulfan II

R.T.: 9.125 min  
 Delta R.T.: 0.004 min  
 Response: 57177713  
 Conc: 50.92 ng/ml



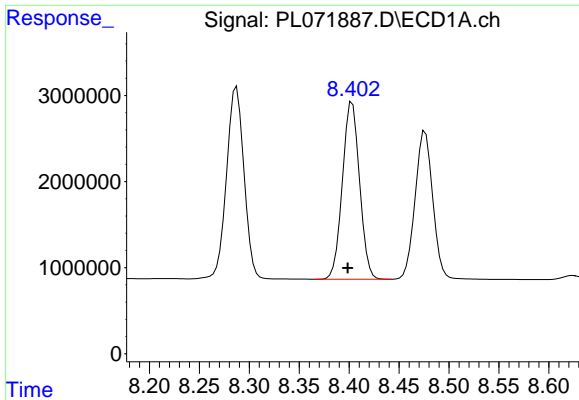
#16 4,4'-DDD

R.T.: 8.143 min  
 Delta R.T.: 0.004 min  
 Response: 22538754  
 Conc: 46.81 ng/ml



#16 4,4'-DDD

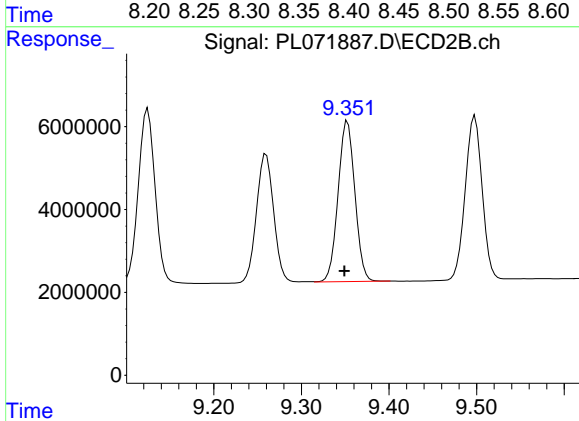
R.T.: 9.036 min  
 Delta R.T.: 0.003 min  
 Response: 48634671  
 Conc: 50.59 ng/ml



#17 4,4'-DDT

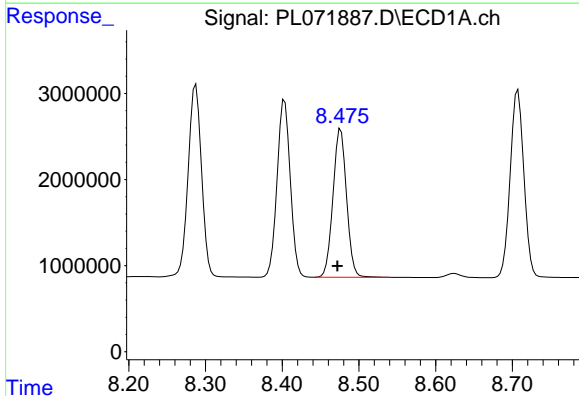
R.T.: 8.403 min  
 Delta R.T.: 0.005 min  
 Response: 24627295  
 Conc: 51.60 ng/ml

Instrument :  
 ECD\_L  
 ClientSampleId :



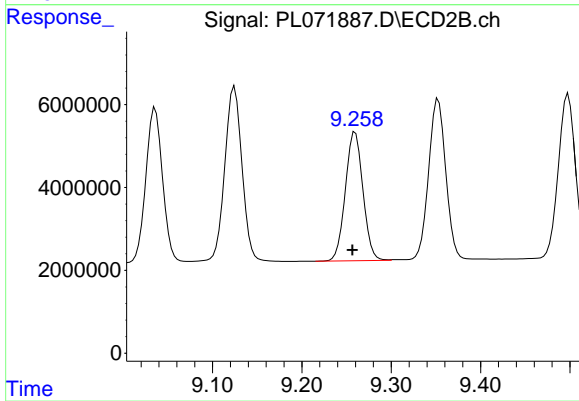
#17 4,4'-DDT

R.T.: 9.353 min  
 Delta R.T.: 0.003 min  
 Response: 51774869  
 Conc: 54.90 ng/ml



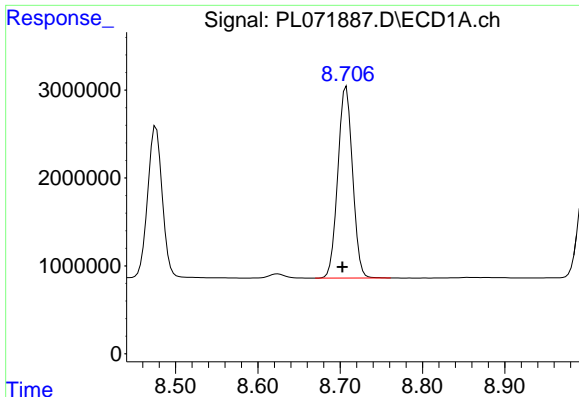
#18 Endrin aldehyde

R.T.: 8.476 min  
 Delta R.T.: 0.004 min  
 Response: 21155053  
 Conc: 46.62 ng/ml



#18 Endrin aldehyde

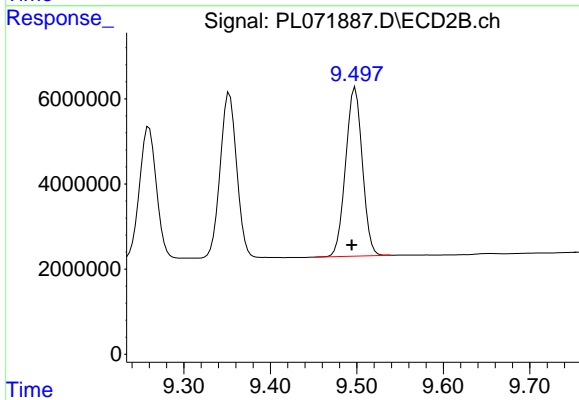
R.T.: 9.260 min  
 Delta R.T.: 0.003 min  
 Response: 42477307  
 Conc: 50.06 ng/ml



#19 Endosulfan Sulfate

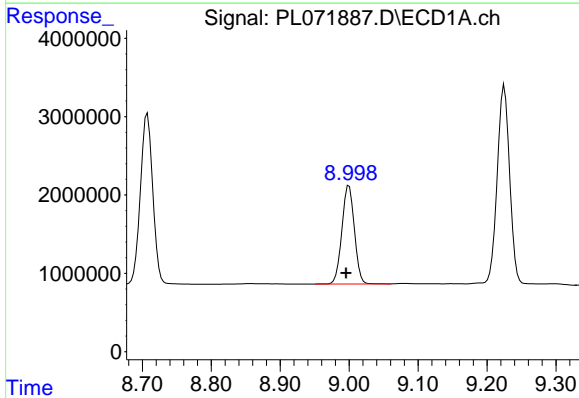
R.T.: 8.707 min  
 Delta R.T.: 0.005 min  
 Response: 27115203  
 Conc: 46.37 ng/ml

Instrument :  
 ECD\_L  
 ClientSampleId :



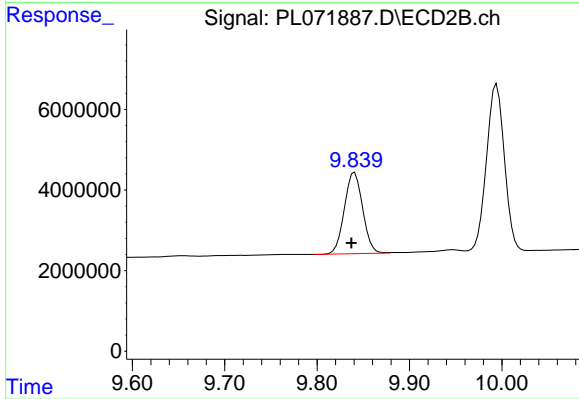
#19 Endosulfan Sulfate

R.T.: 9.498 min  
 Delta R.T.: 0.004 min  
 Response: 52990943  
 Conc: 51.01 ng/ml



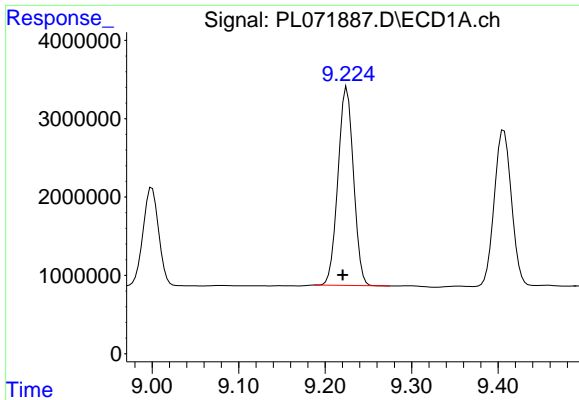
#20 Methoxychlor

R.T.: 9.000 min  
 Delta R.T.: 0.004 min  
 Response: 15829971  
 Conc: 51.15 ng/ml



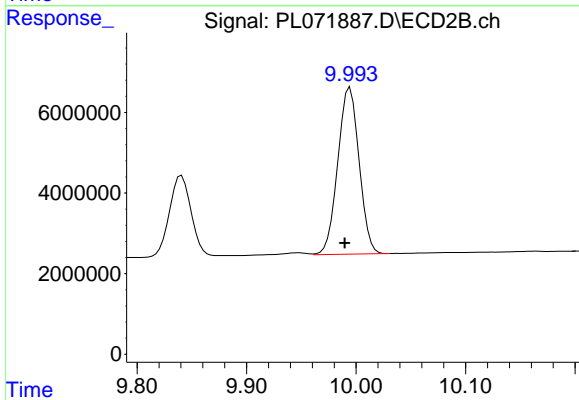
#20 Methoxychlor

R.T.: 9.841 min  
 Delta R.T.: 0.004 min  
 Response: 27705484  
 Conc: 56.26 ng/ml

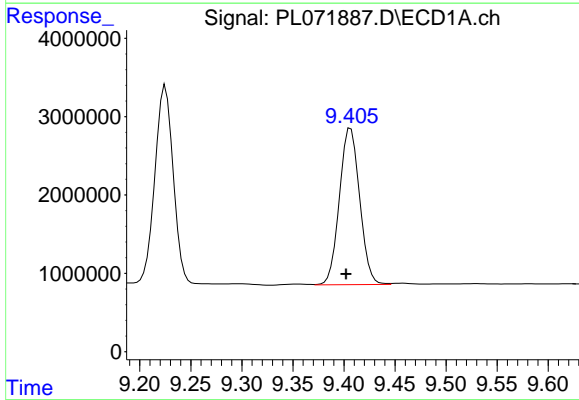


#21 Endrin ketone  
 R.T.: 9.225 min  
 Delta R.T.: 0.005 min  
 Response: 31354849  
 Conc: 45.25 ng/ml

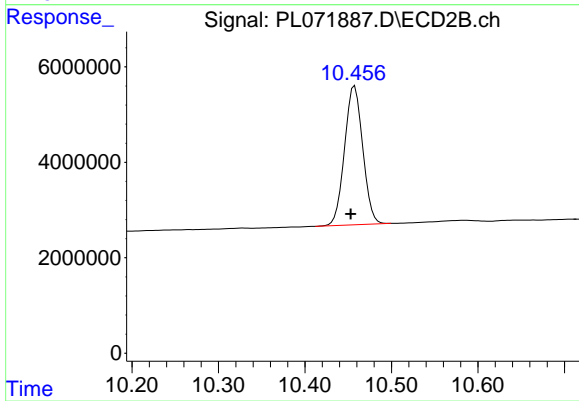
Instrument :  
 ECD\_L  
 ClientSampleId :



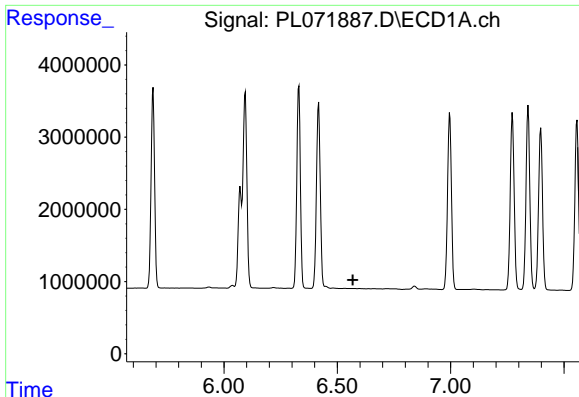
#21 Endrin ketone  
 R.T.: 9.994 min  
 Delta R.T.: 0.005 min  
 Response: 55894670  
 Conc: 49.53 ng/ml



#22 Mirex  
 R.T.: 9.407 min  
 Delta R.T.: 0.004 min  
 Response: 27576583  
 Conc: 45.97 ng/ml



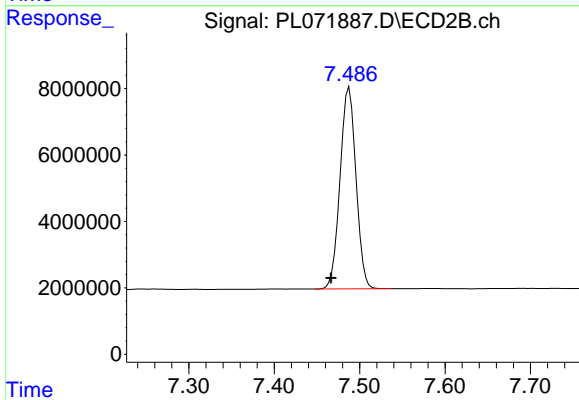
#22 Mirex  
 R.T.: 10.457 min  
 Delta R.T.: 0.005 min  
 Response: 42400683  
 Conc: 49.36 ng/ml



#24 Chlordane-2

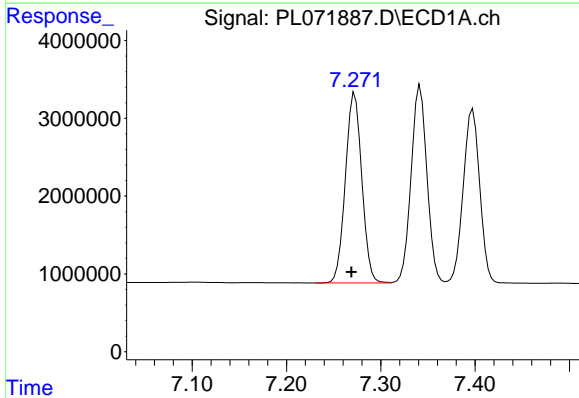
R.T.: 0.000 min  
 Exp R.T.: 6.569 min  
 Response: 0  
 Conc: N.D.

Instrument :  
 ECD\_L  
 ClientSampleId :



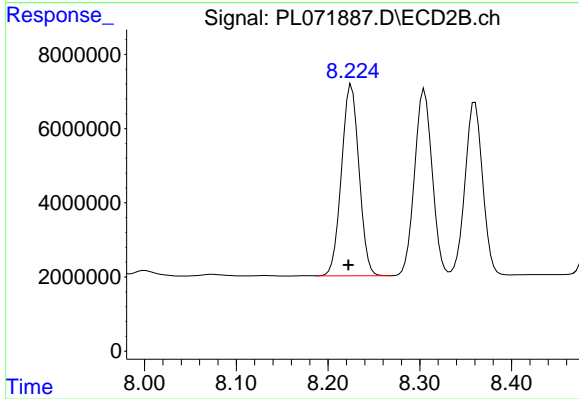
#24 Chlordane-2

R.T.: 7.488 min  
 Delta R.T.: 0.021 min  
 Response: 78778508  
 Conc: 1455.42 ng/ml



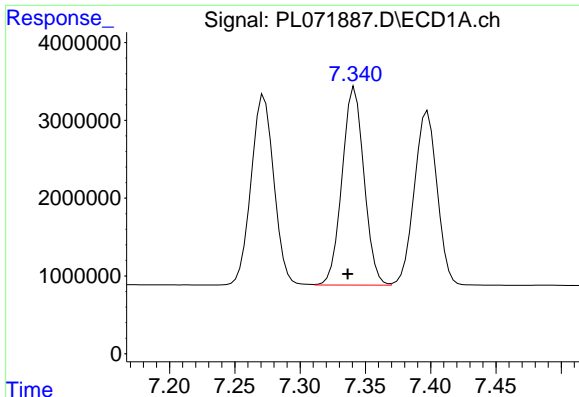
#25 Chlordane-3

R.T.: 7.272 min  
 Delta R.T.: 0.004 min  
 Response: 29646604  
 Conc: 456.24 ng/ml



#25 Chlordane-3

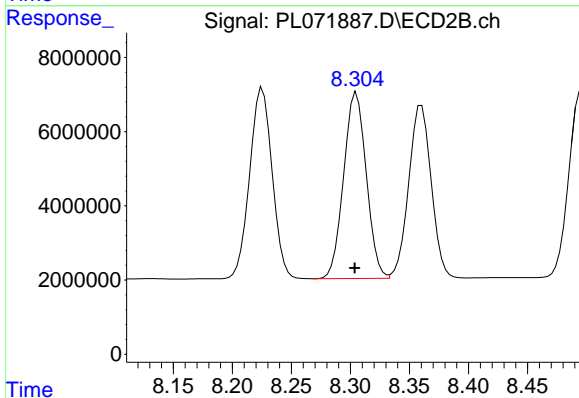
R.T.: 8.225 min  
 Delta R.T.: 0.003 min  
 Response: 68417548  
 Conc: 335.20 ng/ml



#26 Chlordane-4

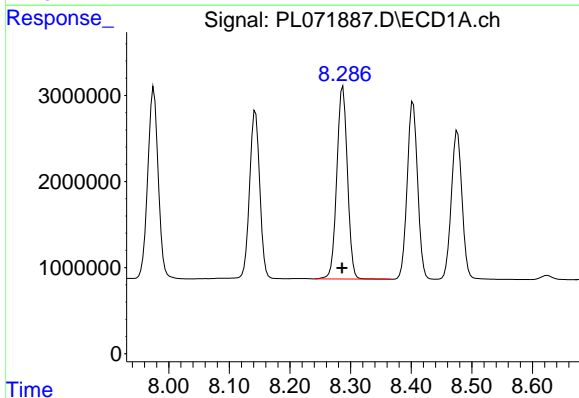
R.T.: 7.342 min  
 Delta R.T.: 0.005 min  
 Response: 29746055  
 Conc: 423.56 ng/ml

Instrument :  
 ECD\_L  
 ClientSampleId :



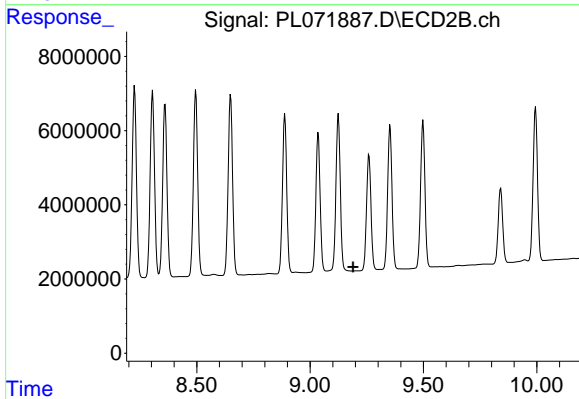
#26 Chlordane-4

R.T.: 8.305 min  
 Delta R.T.: 0.002 min  
 Response: 66960713  
 Conc: 275.08 ng/ml



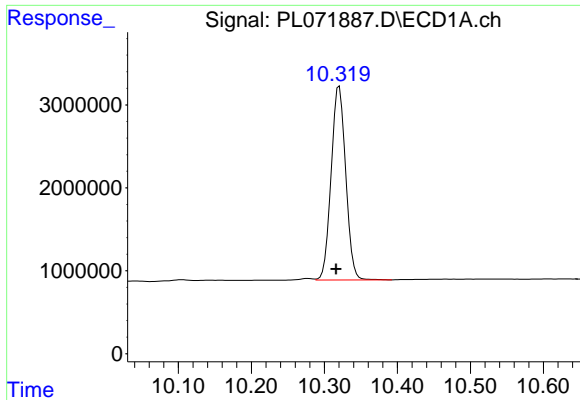
#27 Chlordane-5

R.T.: 8.287 min  
 Delta R.T.: 0.002 min  
 Response: 27184637  
 Conc: 1138.68 ng/ml



#27 Chlordane-5

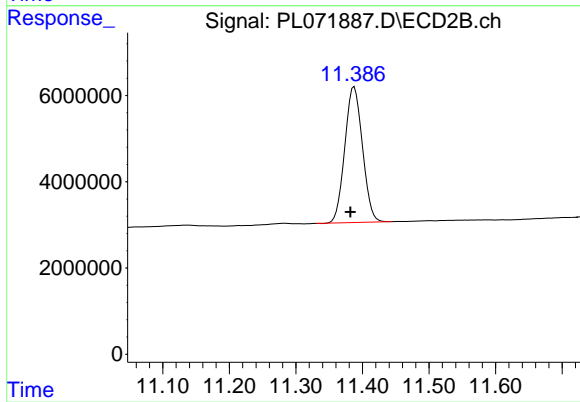
R.T.: 0.000 min  
 Exp R.T. : 9.190 min  
 Response: 0  
 Conc: N.D.



#28 Decachlorobiphenyl

R.T.: 10.320 min  
Delta R.T.: 0.005 min  
Response: 32385122  
Conc: 44.79 ng/ml

Instrument :  
ECD\_L  
ClientSampleId :



#28 Decachlorobiphenyl

R.T.: 11.388 min  
Delta R.T.: 0.006 min  
Response: 58102468  
Conc: 49.03 ng/ml