

Data Path : Z:\pestpcbsrv\HPCHEM1\ECD_L\Data\PL012621\
 Data File : PL064428.D
 Signal(s) : Signal #1: ECD1A.ch Signal #2: ECD2B.ch
 Acq On : 26 Jan 2021 12:31
 Operator : AR\AJ
 Sample : M1235-01MS 5X
 Misc :
 ALS Vial : 14 Sample Multiplier: 1

Instrument :
 ECD_L
 ClientSampleId :
 FK-SF-SAMPLE-1MS

Manual Integrations
 APPROVED

Ankita
 1/29/2021 11:12:40 AM

Integration File signal 1: autoint1.e
 Integration File signal 2: autoint2.e
 Quant Time: Jan 27 04:16:50 2021
 Quant Method : Z:\pestpcbsrv\HPCHEM1\ECD_L\methods\PL011221.M
 Quant Title : GC Extractables
 QLast Update : Mon Jan 18 13:25:12 2021
 Response via : Initial Calibration
 Integrator: ChemStation

Volume Inj. : 1 µl
 Signal #1 Phase : ZB-MR2 Signal #2 Phase: ZB-MR1
 Signal #1 Info : 30M x 0.32mm x0.2 Signal #2 Info : 30M x 0.32mm x0.5µm

Compound	RT#1	RT#2	Resp#1	Resp#2	ng/ml	ng/ml

System Monitoring Compounds						
1) SA Tetrachlo...	3.435	4.108	12294192	9764613	4.100	3.820
28) SA Decachlor...	8.169	9.272	11619907	16097654	3.807	6.783 #
Target Compounds						
2) A alpha-BHC	3.868	4.510	39347736	26044632	7.911	7.127
3) MA gamma-BHC...	4.149	4.801	42933920	25175984	9.260	7.147
4) MA Heptachlor	4.448	5.315	43097762	29723997	9.836	8.276
5) MB Aldrin	4.693	5.624	38632940	26427802	9.641	8.515m
6) B beta-BHC	4.398	4.979	16730866	13031276	6.359	4.651 #
7) B delta-BHC	4.600	5.200	33457124	20024171	7.225	6.308
8) B Heptachlo...	5.133	6.019	28212374	22801996	7.445m	8.753
9) A Endosulfan I	5.471	6.383	23838395	15768117	6.749	5.753
10) B gamma-Chl...	5.359	6.255	44435686	33817969	11.471m	11.255
11) B alpha-Chl...	5.419	6.328	40057106	35518172	10.469	11.668
12) B 4,4'-DDE	5.585	6.485	26691460	20497736	7.577	7.696
13) MA Dieldrin	5.712	6.643	38345118	20032013	10.309	7.124 #
14) MA Endrin	5.967	6.865	22183946	13123971	6.389	5.747
15) B Endosulfa...	6.240	7.078	24621131	14125367	7.264	5.592
16) A 4,4'-DDD	6.098	6.983	17944088	15279185	6.152	6.893
17) MA 4,4'-DDT	6.338	7.283	16280137	10588509	5.453	4.675
18) B Endrin al...	6.408	7.204	17230576	9396686	6.007	4.334 #
19) B Endosulfa...	6.620	7.427	18418576	13237585	5.429	5.359
20) A Methoxychlor	6.885	7.742	8964453	7818041	5.364	5.786
21) B Endrin ke...	7.105	7.906	16445357	12329583	4.579m	4.943
22) Mirex	7.291	8.360	15114763	16433756	5.555m	8.101 #

(f)=RT Delta > 1/2 Window (#)=Amounts differ by > 25% (m)=manual int.

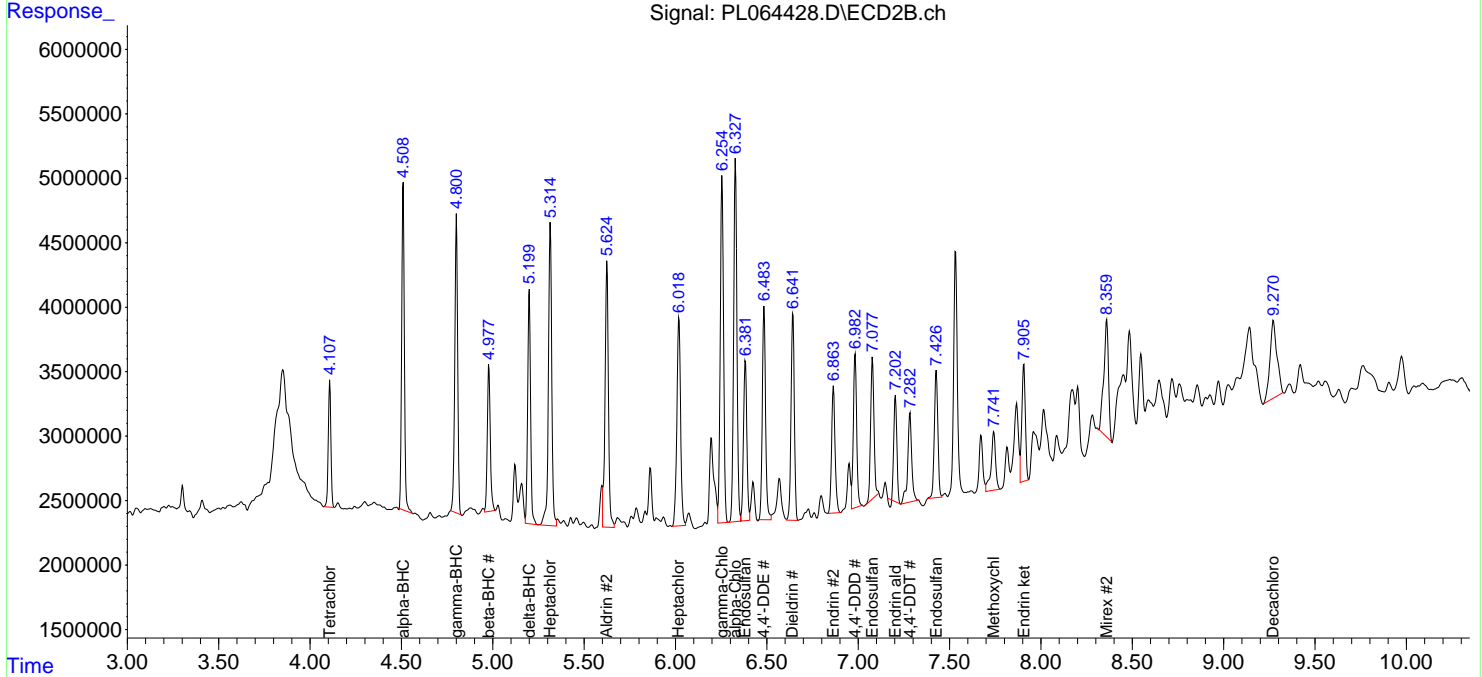
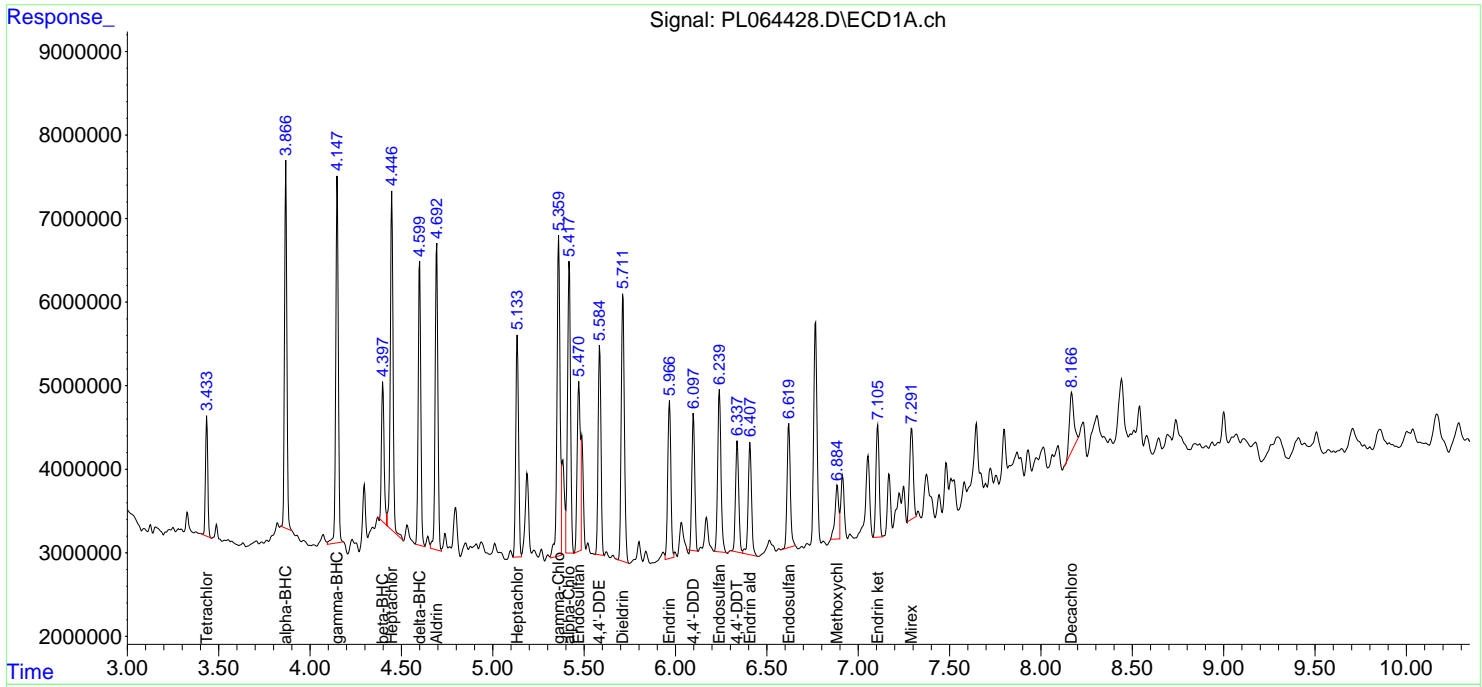
Data Path : Z:\pestpcbsrv\HPCHEM1\ECD_L\Data\PL012621\
 Data File : PL064428.D
 Signal(s) : Signal #1: ECD1A.ch Signal #2: ECD2B.ch
 Acq On : 26 Jan 2021 12:31
 Operator : AR\AJ
 Sample : M1235-01MS 5X
 Misc :
 ALS Vial : 14 Sample Multiplier: 1

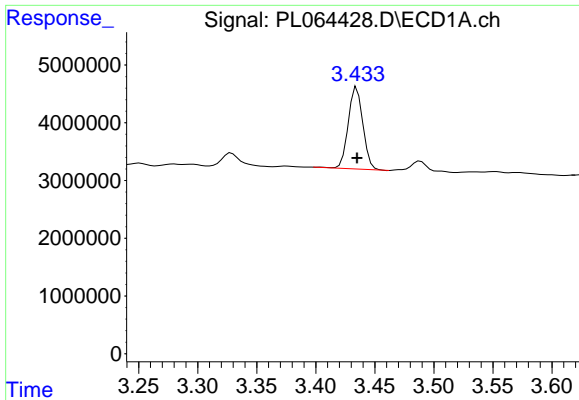
Instrument :
 ECD_L
 Client Sampled :
 FK-SF-SAMPLE-1MS

Manual Integrations
APPROVED
 Ankita
 1/29/2021 11:12:40 AM

Integration File signal 1: autoint1.e
 Integration File signal 2: autoint2.e
 Quant Time: Jan 27 04:16:50 2021
 Quant Method : Z:\pestpcbsrv\HPCHEM1\ECD_L\methods\PL011221.M
 Quant Title : GC Extractables
 QLast Update : Mon Jan 18 13:25:12 2021
 Response via : Initial Calibration
 Integrator: ChemStation

Volume Inj. : 1 µl
 Signal #1 Phase : ZB-MR2 Signal #2 Phase: ZB-MR1
 Signal #1 Info : 30M x 0.32mm x0.2 Signal #2 Info : 30M x 0.32mm x0.5µm

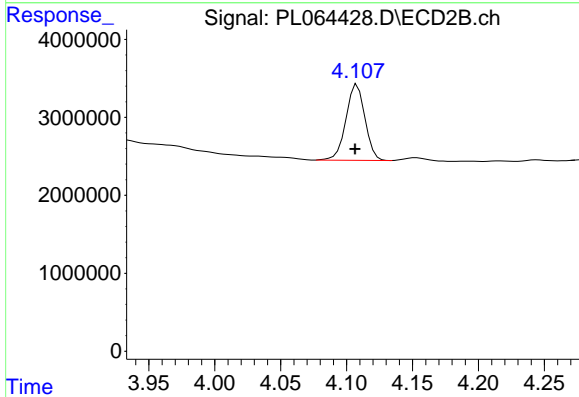




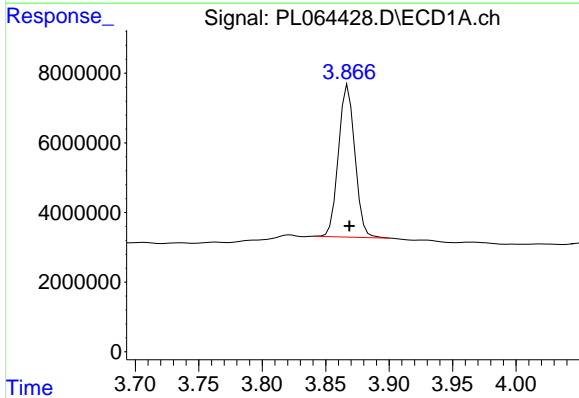
#1 Tetrachloro-m-xylene
 R.T.: 3.435 min
 Delta R.T.: 0.000 min
 Response: 12294192
 Conc: 4.10 ng/ml

Instrument :
 ECD_L
 ClientSampleId :
 FK-SF-SAMPLE-1MS

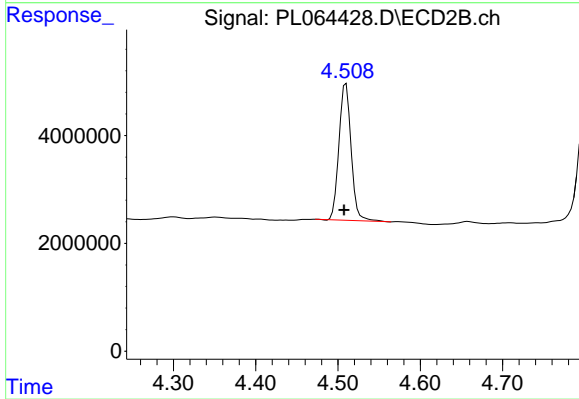
Manual Integrations
 APPROVED
 Ankita
 1/29/2021 11:12:40 AM



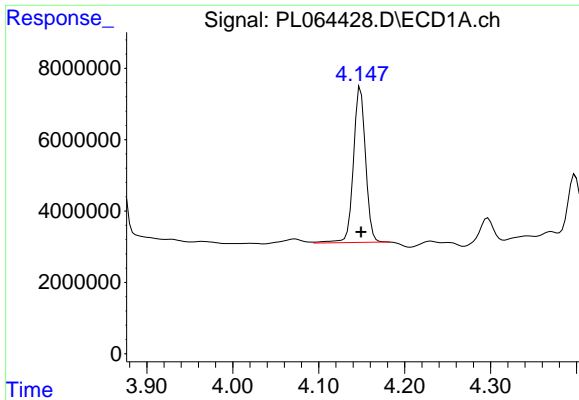
#1 Tetrachloro-m-xylene
 R.T.: 4.108 min
 Delta R.T.: 0.002 min
 Response: 9764613
 Conc: 3.82 ng/ml



#2 alpha-BHC
 R.T.: 3.868 min
 Delta R.T.: 0.000 min
 Response: 39347736
 Conc: 7.91 ng/ml



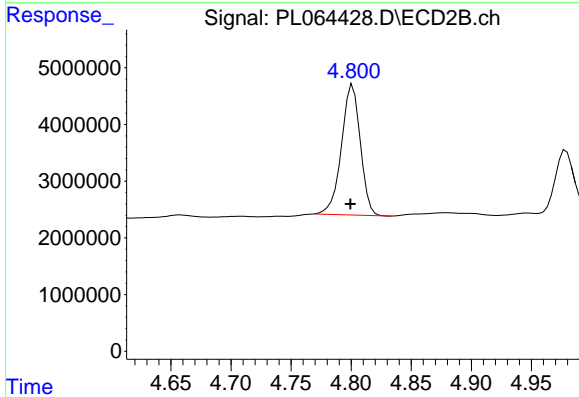
#2 alpha-BHC
 R.T.: 4.510 min
 Delta R.T.: 0.002 min
 Response: 26044632
 Conc: 7.13 ng/ml



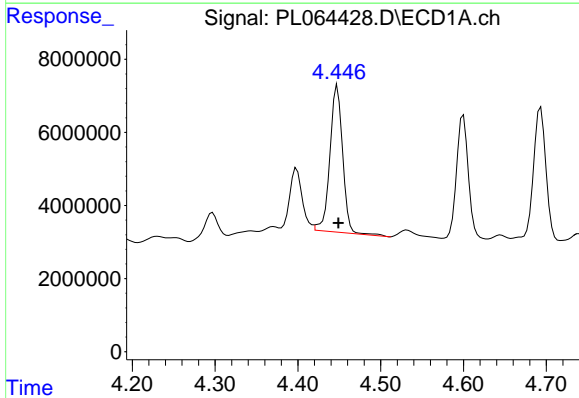
#3 gamma-BHC (Lindane)
 R.T.: 4.149 min
 Delta R.T.: 0.000 min
 Response: 42933920
 Conc: 9.26 ng/ml

Instrument :
 ECD_L
ClientSampleId :
 FK-SF-SAMPLE-1MS

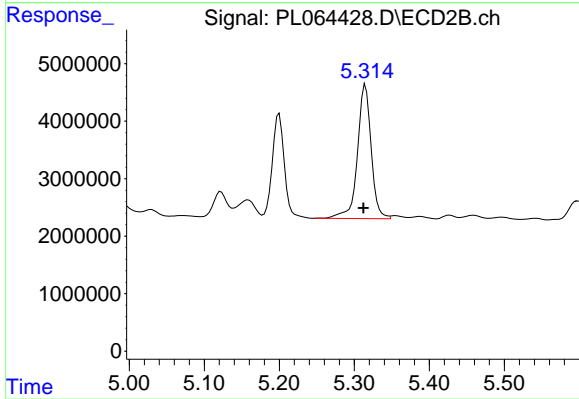
Manual Integrations
APPROVED
 Ankita
 1/29/2021 11:12:40 AM



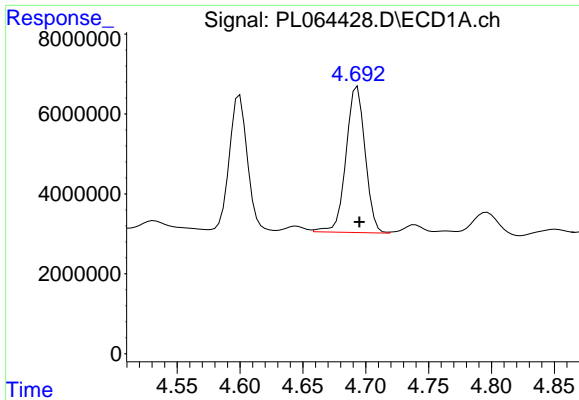
#3 gamma-BHC (Lindane)
 R.T.: 4.801 min
 Delta R.T.: 0.002 min
 Response: 25175984
 Conc: 7.15 ng/ml



#4 Heptachlor
 R.T.: 4.448 min
 Delta R.T.: -0.002 min
 Response: 43097762
 Conc: 9.84 ng/ml



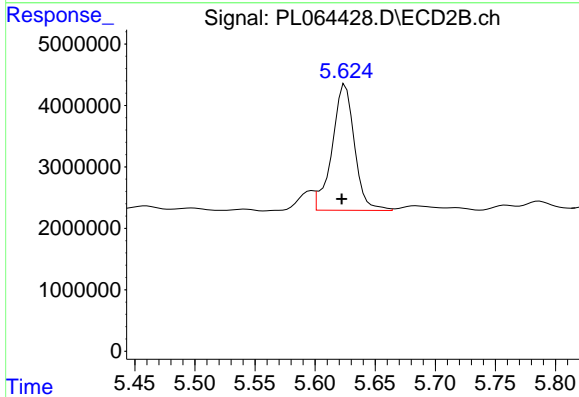
#4 Heptachlor
 R.T.: 5.315 min
 Delta R.T.: 0.003 min
 Response: 29723997
 Conc: 8.28 ng/ml



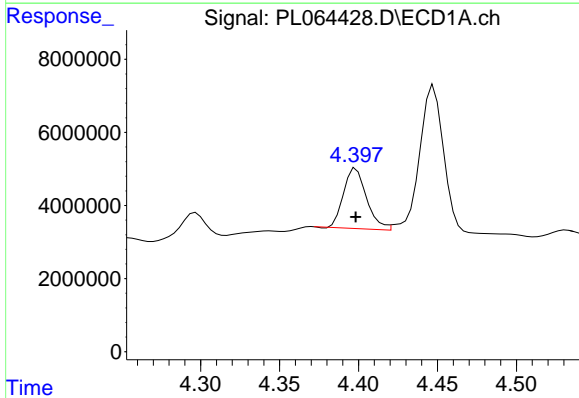
#5 Aldrin
 R.T.: 4.693 min
 Delta R.T.: -0.001 min
 Response: 38632940
 Conc: 9.64 ng/ml

Instrument :
 ECD_L
 ClientSampleId :
 FK-SF-SAMPLE-1MS

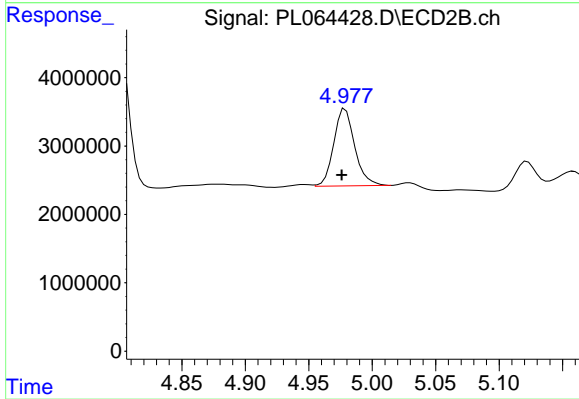
Manual Integrations
APPROVED
 Ankita
 1/29/2021 11:12:40 AM



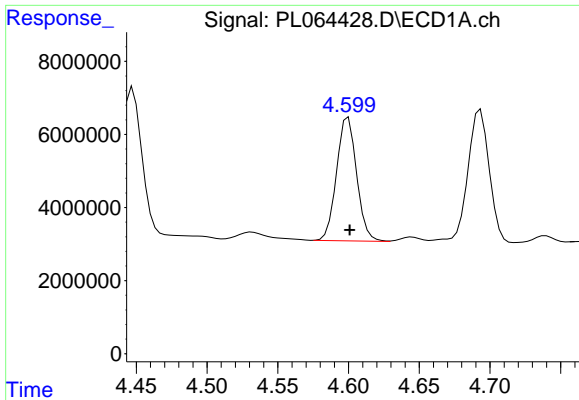
#5 Aldrin
 R.T.: 5.624 min
 Delta R.T.: 0.002 min
 Response: 26427802
 Conc: 8.51 ng/ml m



#6 beta-BHC
 R.T.: 4.398 min
 Delta R.T.: 0.000 min
 Response: 16730866
 Conc: 6.36 ng/ml



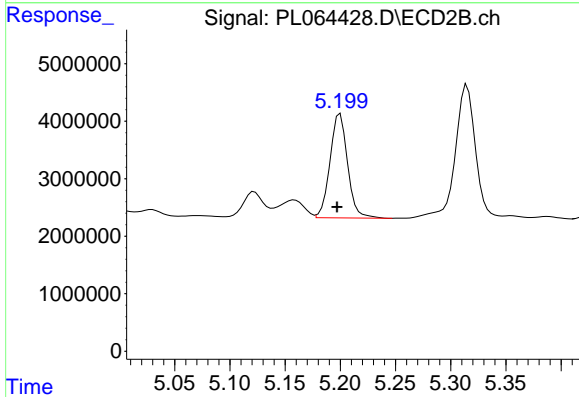
#6 beta-BHC
 R.T.: 4.979 min
 Delta R.T.: 0.003 min
 Response: 13031276
 Conc: 4.65 ng/ml



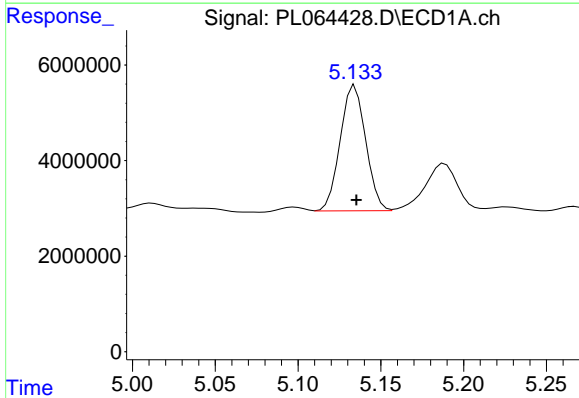
#7 delta-BHC
 R.T.: 4.600 min
 Delta R.T.: 0.000 min
 Response: 33457124
 Conc: 7.22 ng/ml

Instrument :
 ECD_L
 ClientSampleId :
 FK-SF-SAMPLE-1MS

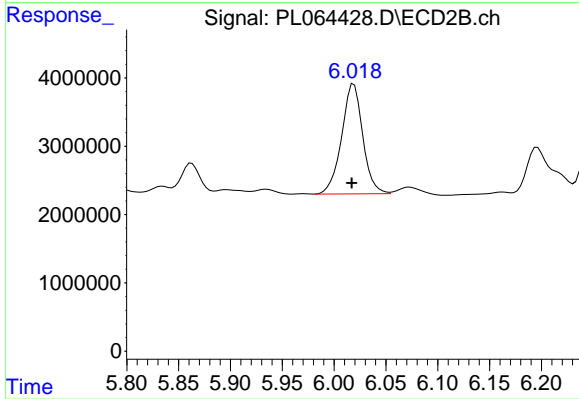
Manual Integrations
APPROVED
 Ankita
 1/29/2021 11:12:40 AM



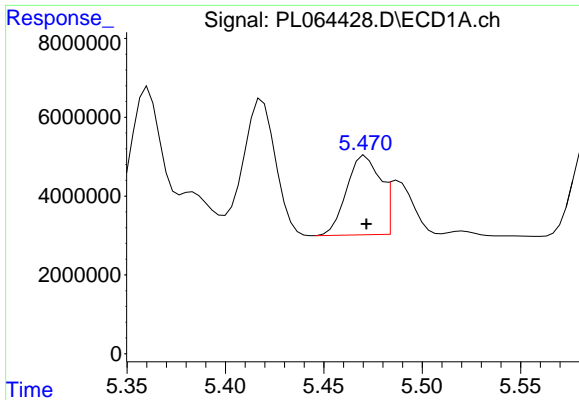
#7 delta-BHC
 R.T.: 5.200 min
 Delta R.T.: 0.003 min
 Response: 20024171
 Conc: 6.31 ng/ml



#8 Heptachlor epoxide
 R.T.: 5.133 min
 Delta R.T.: -0.002 min
 Response: 28212374
 Conc: 7.44 ng/ml m



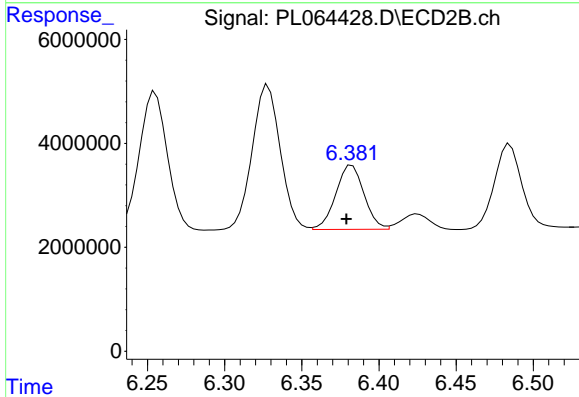
#8 Heptachlor epoxide
 R.T.: 6.019 min
 Delta R.T.: 0.002 min
 Response: 22801996
 Conc: 8.75 ng/ml



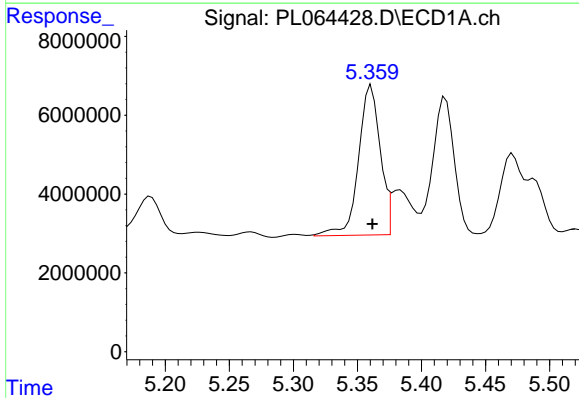
#9 Endosulfan I
 R.T.: 5.471 min
 Delta R.T.: 0.000 min
 Response: 23838395
 Conc: 6.75 ng/ml

Instrument :
 ECD_L
 ClientSampleId :
 FK-SF-SAMPLE-1MS

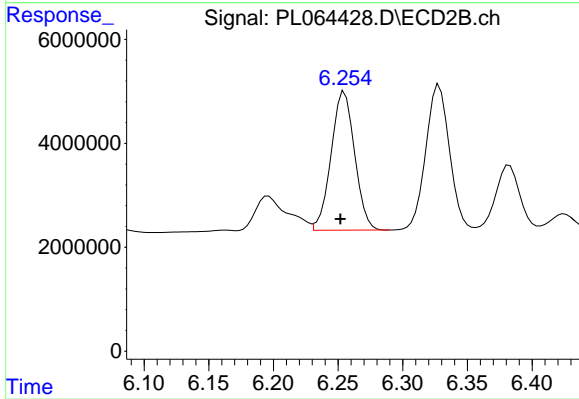
Manual Integrations
APPROVED
 Ankita
 1/29/2021 11:12:40 AM



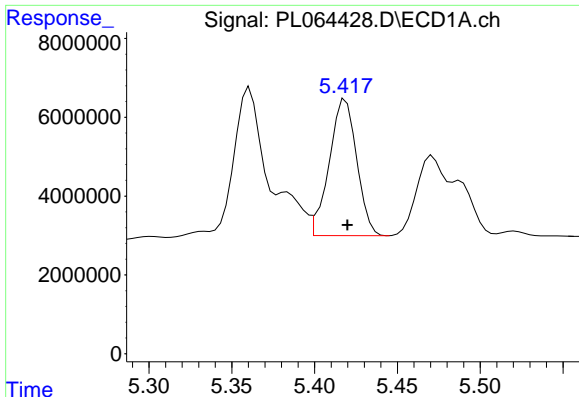
#9 Endosulfan I
 R.T.: 6.383 min
 Delta R.T.: 0.004 min
 Response: 15768117
 Conc: 5.75 ng/ml



#10 gamma-Chlordane
 R.T.: 5.359 min
 Delta R.T.: -0.002 min
 Response: 44435686
 Conc: 11.47 ng/ml m



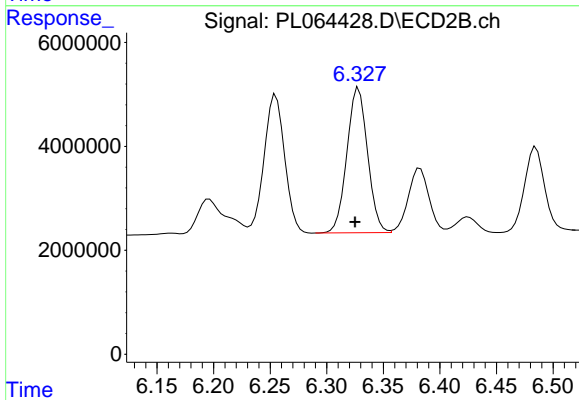
#10 gamma-Chlordane
 R.T.: 6.255 min
 Delta R.T.: 0.003 min
 Response: 33817969
 Conc: 11.25 ng/ml



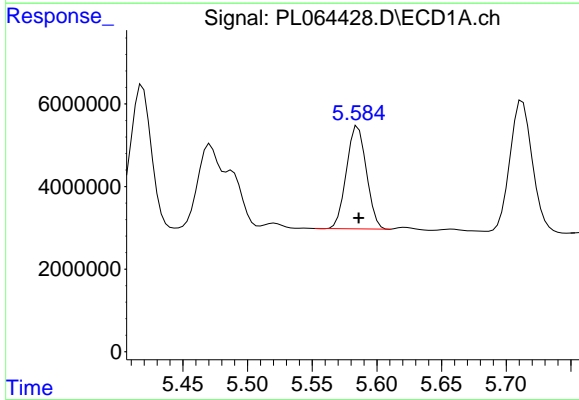
#11 alpha-Chlordane
 R.T.: 5.419 min
 Delta R.T.: 0.000 min
 Response: 40057106
 Conc: 10.47 ng/ml

Instrument :
 ECD_L
 ClientSampled :
 FK-SF-SAMPLE-1MS

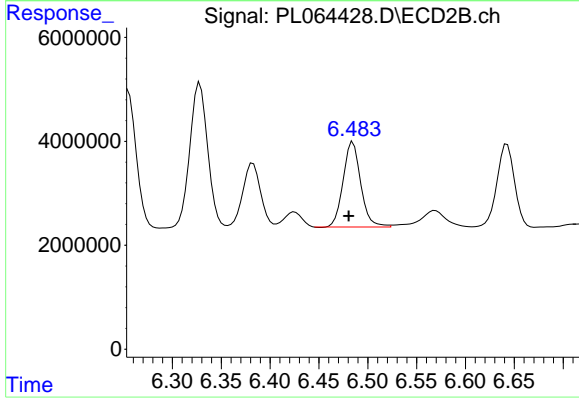
Manual Integrations
APPROVED
 Ankita
 1/29/2021 11:12:40 AM



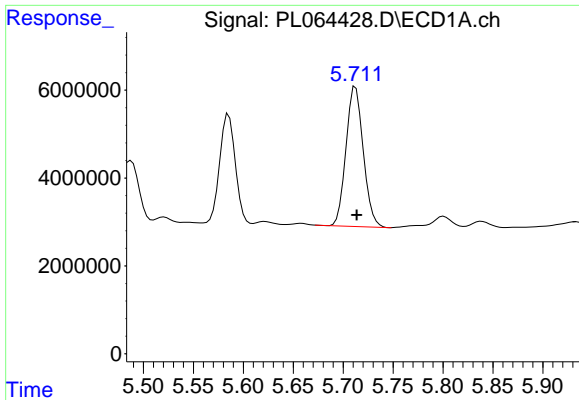
#11 alpha-Chlordane
 R.T.: 6.328 min
 Delta R.T.: 0.003 min
 Response: 35518172
 Conc: 11.67 ng/ml



#12 4,4'-DDE
 R.T.: 5.585 min
 Delta R.T.: 0.000 min
 Response: 26691460
 Conc: 7.58 ng/ml



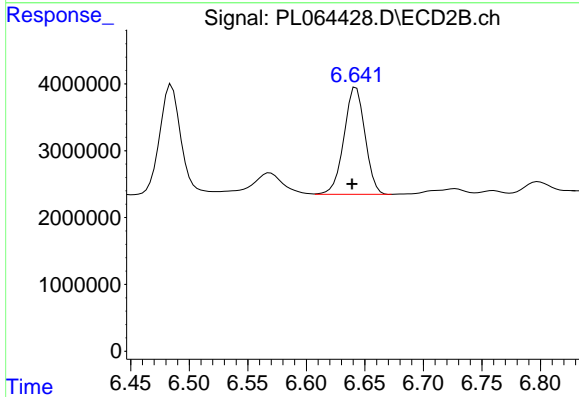
#12 4,4'-DDE
 R.T.: 6.485 min
 Delta R.T.: 0.004 min
 Response: 20497736
 Conc: 7.70 ng/ml



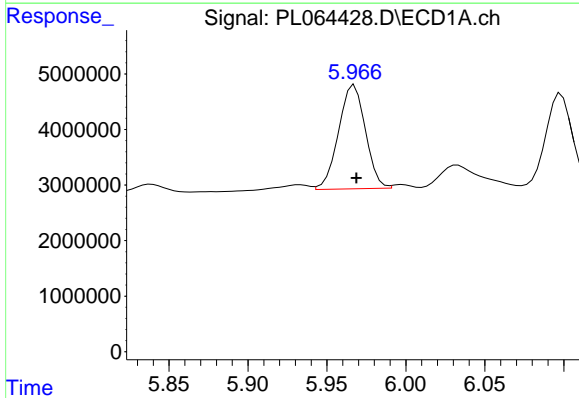
#13 Dieldrin
 R.T.: 5.712 min
 Delta R.T.: -0.001 min
 Response: 38345118
 Conc: 10.31 ng/ml

Instrument :
 ECD_L
 ClientSampleId :
 FK-SF-SAMPLE-1MS

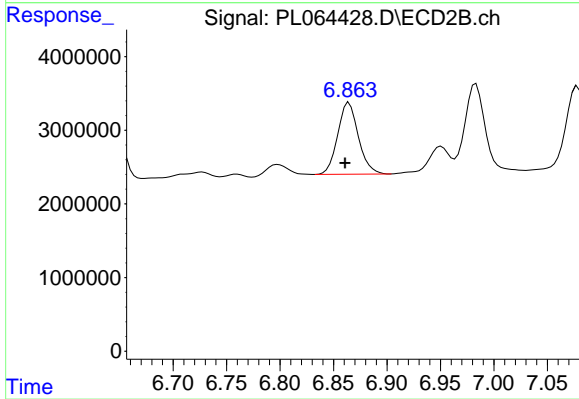
Manual Integrations
APPROVED
 Ankita
 1/29/2021 11:12:40 AM



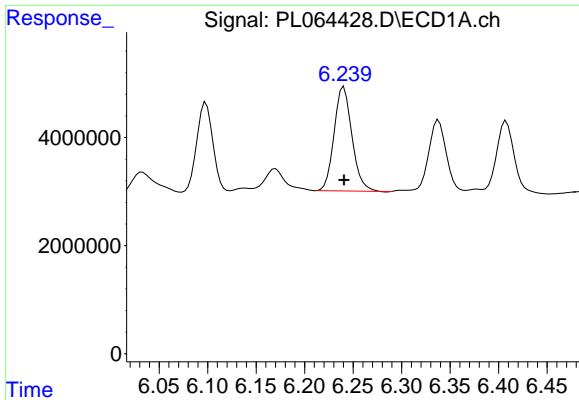
#13 Dieldrin
 R.T.: 6.643 min
 Delta R.T.: 0.004 min
 Response: 20032013
 Conc: 7.12 ng/ml



#14 Endrin
 R.T.: 5.967 min
 Delta R.T.: -0.001 min
 Response: 22183946
 Conc: 6.39 ng/ml



#14 Endrin
 R.T.: 6.865 min
 Delta R.T.: 0.004 min
 Response: 13123971
 Conc: 5.75 ng/ml



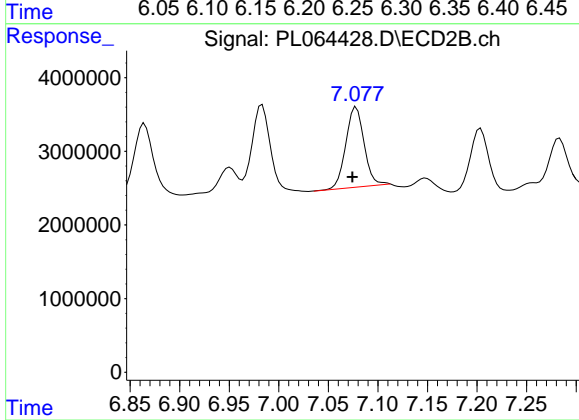
#15 Endosulfan II

R.T.: 6.240 min
 Delta R.T.: 0.000 min
 Response: 24621131
 Conc: 7.26 ng/ml

Instrument :
 ECD_L
 ClientSampleId :
 FK-SF-SAMPLE-1MS

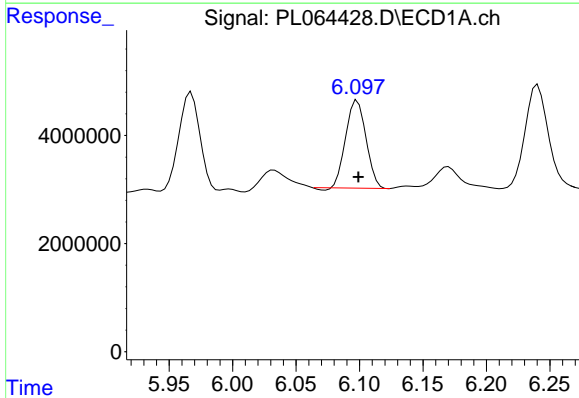
Manual Integrations
 APPROVED

Ankita
 1/29/2021 11:12:40 AM



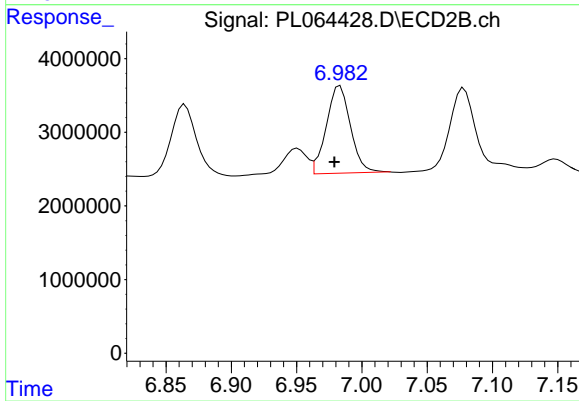
#15 Endosulfan II

R.T.: 7.078 min
 Delta R.T.: 0.004 min
 Response: 14125367
 Conc: 5.59 ng/ml



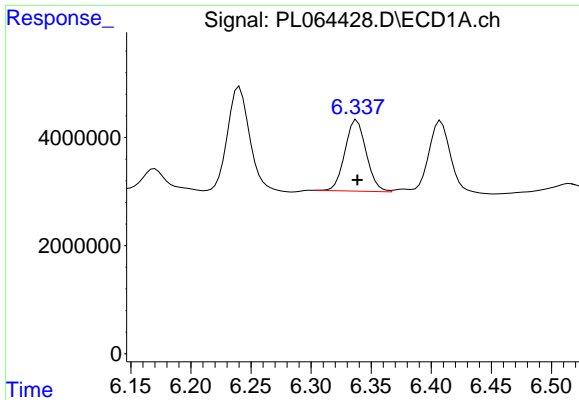
#16 4,4'-DDD

R.T.: 6.098 min
 Delta R.T.: 0.000 min
 Response: 17944088
 Conc: 6.15 ng/ml



#16 4,4'-DDD

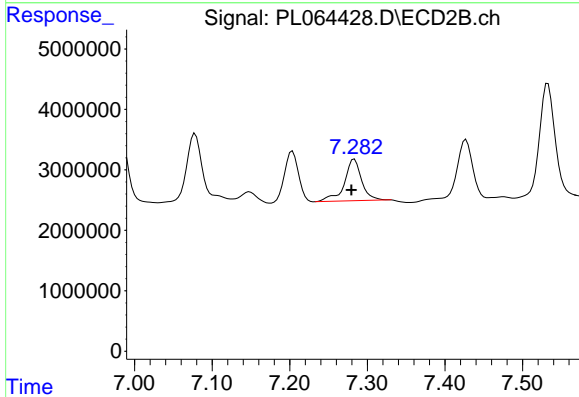
R.T.: 6.983 min
 Delta R.T.: 0.004 min
 Response: 15279185
 Conc: 6.89 ng/ml



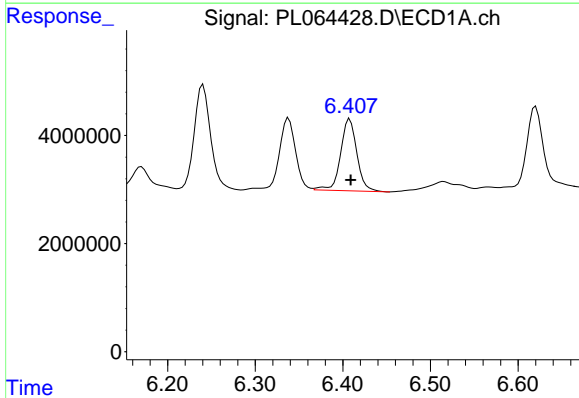
#17 4,4'-DDT
 R.T.: 6.338 min
 Delta R.T.: 0.000 min
 Response: 16280137
 Conc: 5.45 ng/ml

Instrument :
 ECD_L
ClientSampleId :
 FK-SF-SAMPLE-1MS

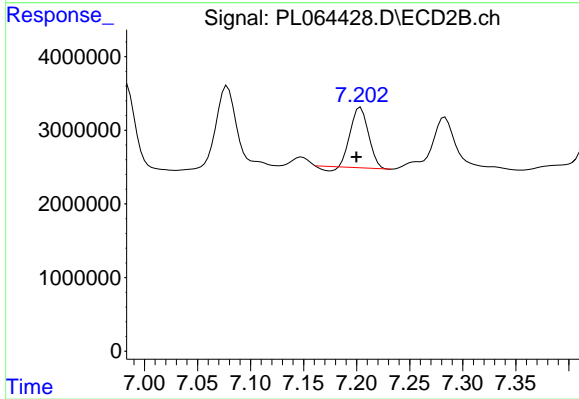
Manual Integrations
APPROVED
 Ankita
 1/29/2021 11:12:40 AM



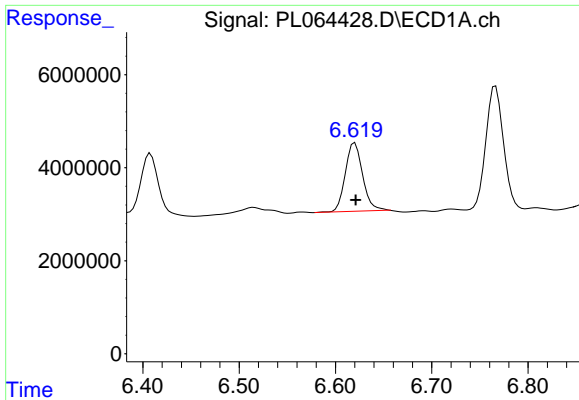
#17 4,4'-DDT
 R.T.: 7.283 min
 Delta R.T.: 0.004 min
 Response: 10588509
 Conc: 4.67 ng/ml



#18 Endrin aldehyde
 R.T.: 6.408 min
 Delta R.T.: -0.001 min
 Response: 17230576
 Conc: 6.01 ng/ml



#18 Endrin aldehyde
 R.T.: 7.204 min
 Delta R.T.: 0.004 min
 Response: 9396686
 Conc: 4.33 ng/ml

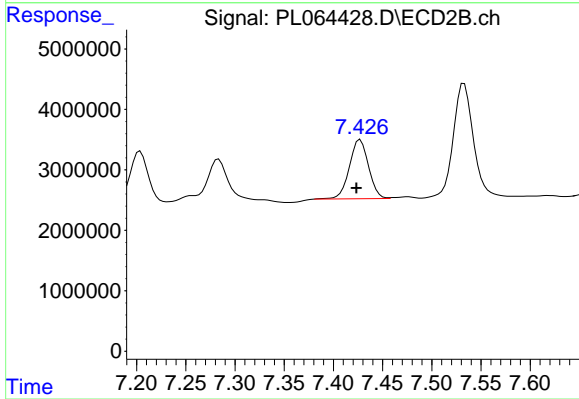


#19 Endosulfan Sulfate
 R.T.: 6.620 min
 Delta R.T.: 0.000 min
 Response: 18418576
 Conc: 5.43 ng/ml

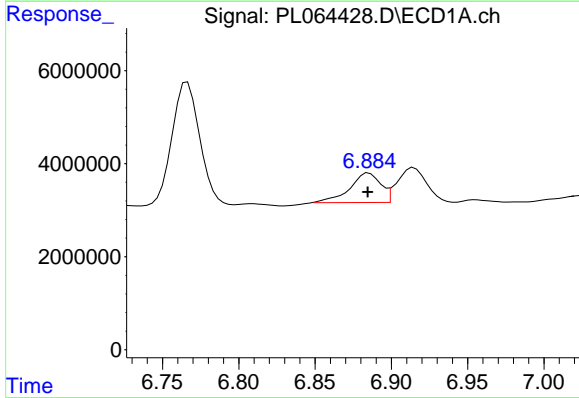
Instrument :
 ECD_L
 ClientSampleId :
 FK-SF-SAMPLE-1MS

Manual Integrations
 APPROVED

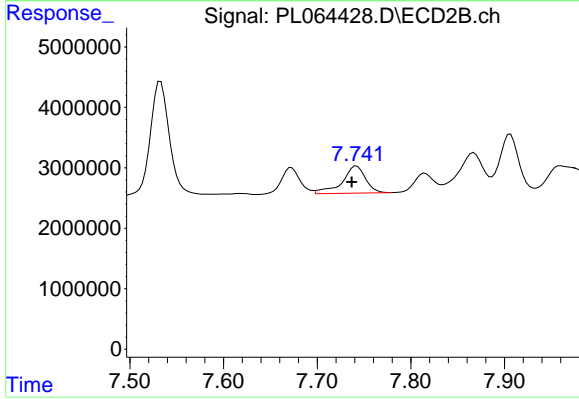
Ankita
 1/29/2021 11:12:40 AM



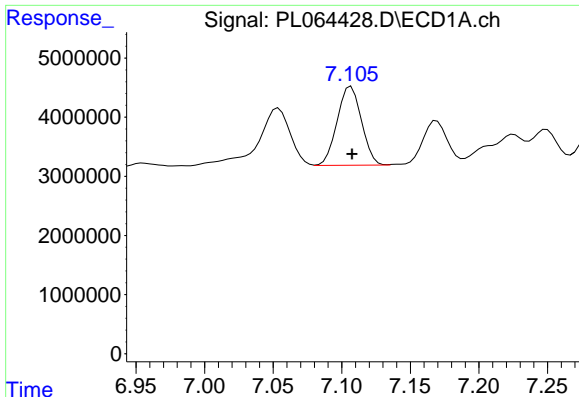
#19 Endosulfan Sulfate
 R.T.: 7.427 min
 Delta R.T.: 0.004 min
 Response: 13237585
 Conc: 5.36 ng/ml



#20 Methoxychlor
 R.T.: 6.885 min
 Delta R.T.: 0.000 min
 Response: 8964453
 Conc: 5.36 ng/ml



#20 Methoxychlor
 R.T.: 7.742 min
 Delta R.T.: 0.005 min
 Response: 7818041
 Conc: 5.79 ng/ml



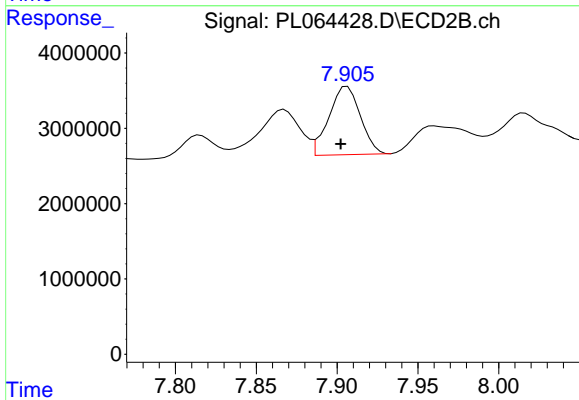
#21 Endrin ketone

R.T.: 7.105 min
 Delta R.T.: -0.002 min
 Response: 16445357
 Conc: 4.58 ng/ml m

Instrument :
 ECD_L
 ClientSampleId :
 FK-SF-SAMPLE-1MS

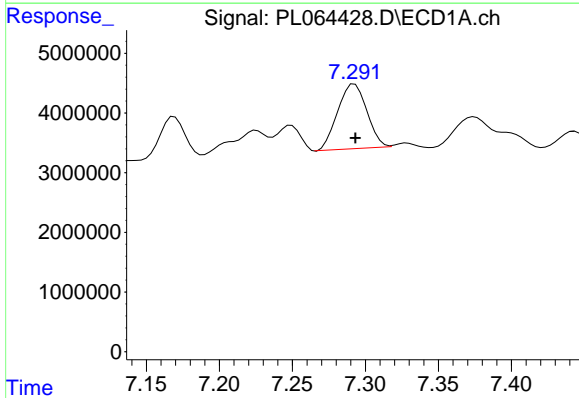
Manual Integrations
 APPROVED

Ankita
 1/29/2021 11:12:40 AM



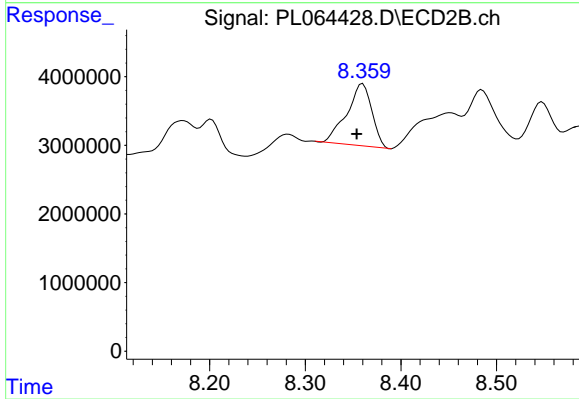
#21 Endrin ketone

R.T.: 7.906 min
 Delta R.T.: 0.004 min
 Response: 12329583
 Conc: 4.94 ng/ml



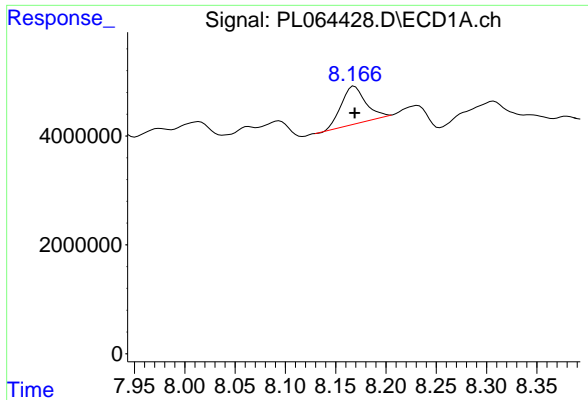
#22 Mirex

R.T.: 7.291 min
 Delta R.T.: -0.002 min
 Response: 15114763
 Conc: 5.56 ng/ml m



#22 Mirex

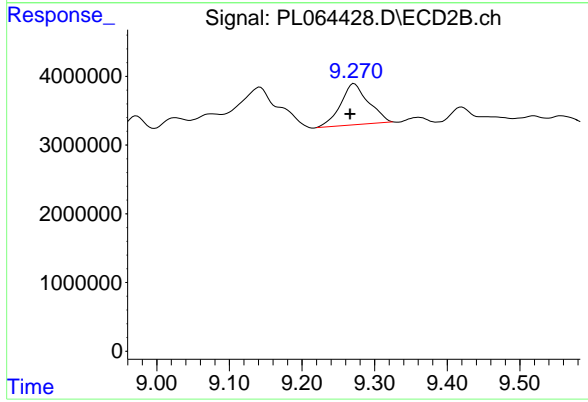
R.T.: 8.360 min
 Delta R.T.: 0.006 min
 Response: 16433756
 Conc: 8.10 ng/ml



#28 Decachlorobiphenyl
R.T.: 8.169 min
Delta R.T.: 0.000 min
Response: 11619907
Conc: 3.81 ng/ml

Instrument :
ECD_L
ClientSampleId :
FK-SF-SAMPLE-1MS

Manual Integrations
APPROVED
Ankita
1/29/2021 11:12:40 AM



#28 Decachlorobiphenyl
R.T.: 9.272 min
Delta R.T.: 0.006 min
Response: 16097654
Conc: 6.78 ng/ml