

Data Path : Z:\pestpcbsrv\HPCHEM1\ECD_L\Data\PL020322\
 Data File : PL072432.D
 Signal(s) : Signal #1: ECD1A.ch Signal #2: ECD2B.ch
 Acq On : 03 Feb 2022 12:57
 Operator : AR\AJ
 Sample : PB142453BS
 Misc :
 ALS Vial : 6 Sample Multiplier: 1

Instrument :
 ECD_L
 ClientSampleId :

Integration File signal 1: autoint1.e
 Integration File signal 2: autoint2.e
 Quant Time: Feb 04 04:56:31 2022
 Quant Method : Z:\pestpcbsrv\HPCHEM1\ECD_L\methods\PL011722.M
 Quant Title : GC Extractables
 QLast Update : Tue Jan 18 10:53:59 2022
 Response via : Initial Calibration
 Integrator: ChemStation

Volume Inj. : 1 µl
 Signal #1 Phase : ZB-MR2 Signal #2 Phase: ZB-MR1
 Signal #1 Info : 30M x 0.32mm x0.2 Signal #2 Info : 30M x 0.32mm x0.5µm

Compound	RT#1	RT#2	Resp#1	Resp#2	ng/ml	ng/ml
System Monitoring Compounds						
1) SA Tetrachlo...	4.555	5.491	13209295	43497233	23.792	26.782
28) SA Decachlor...	10.316	11.382	19309611	35550903	21.734	22.033
Target Compounds						
2) A alpha-BHC	5.261	6.073	34662359	119.4E6	44.829	49.465
3) MA gamma-BHC...	5.685	6.469	34482920	109.0E6	45.732	48.456
4) MA Heptachlor	6.090	7.114	53697362	112.7E6	62.244	48.590
5) MB Aldrin	6.414	7.484	35853572	106.7E6	45.405	48.245
6) B beta-BHC	6.090f	6.729	53697362	47835402	162.442	48.313 #
7) B delta-BHC	6.328	6.994	35161037	110.5E6	44.387	44.904
8) B Heptachlo...	6.992	7.952	34874453	95479218	45.813	47.685
9) A Endosulfan I	7.394	8.357	32725538	85681170	46.046	47.336
10) B gamma-Chl...	7.269	8.222	35543914	95498717	45.237	47.257
11) B alpha-Chl...	7.338	8.302	35496437	93415580	45.247	47.113
12) B 4,4'-DDE	7.553	8.492	34253148	90800695	47.443	48.011
13) MA Dieldrin	7.680	8.646	34910346	90655608	46.079	46.145
14) MA Endrin	7.971	8.884	31711830	74389021	45.260	44.866
15) B Endosulfa...	8.284	9.121	31852794	77245943	42.840	45.044
16) A 4,4'-DDD	8.140	9.033	27650828	69294047	47.168	48.465
17) MA 4,4'-DDT	8.400	9.349	28712874	69100523	43.238	43.719
18) B Endrin al...	8.473	9.256	24851619	57590426	43.618	46.392
19) B Endosulfa...	8.704	9.494	31245137	69279159	42.616	44.377
20) A Methoxychlor	8.995	9.837	18123641	36570977	42.958	44.149
21) B Endrin ke...	9.221	9.991	35983813	73634948	43.214	44.492
22) Mirex	9.402	10.453	32655210	55795411	44.219	44.716
24) Chlordane-2	0.000	7.484	0	106.7E6	N.D.	1526.319 #
25) Chlordane-3	7.269	8.222	35543914	95498717	464.574	343.727 #
26) Chlordane-4	7.338	8.302	35496437	93415580	430.240	281.313 #
27) Chlordane-5	8.284	9.204	31852794	149068	1092.961	2.443 #

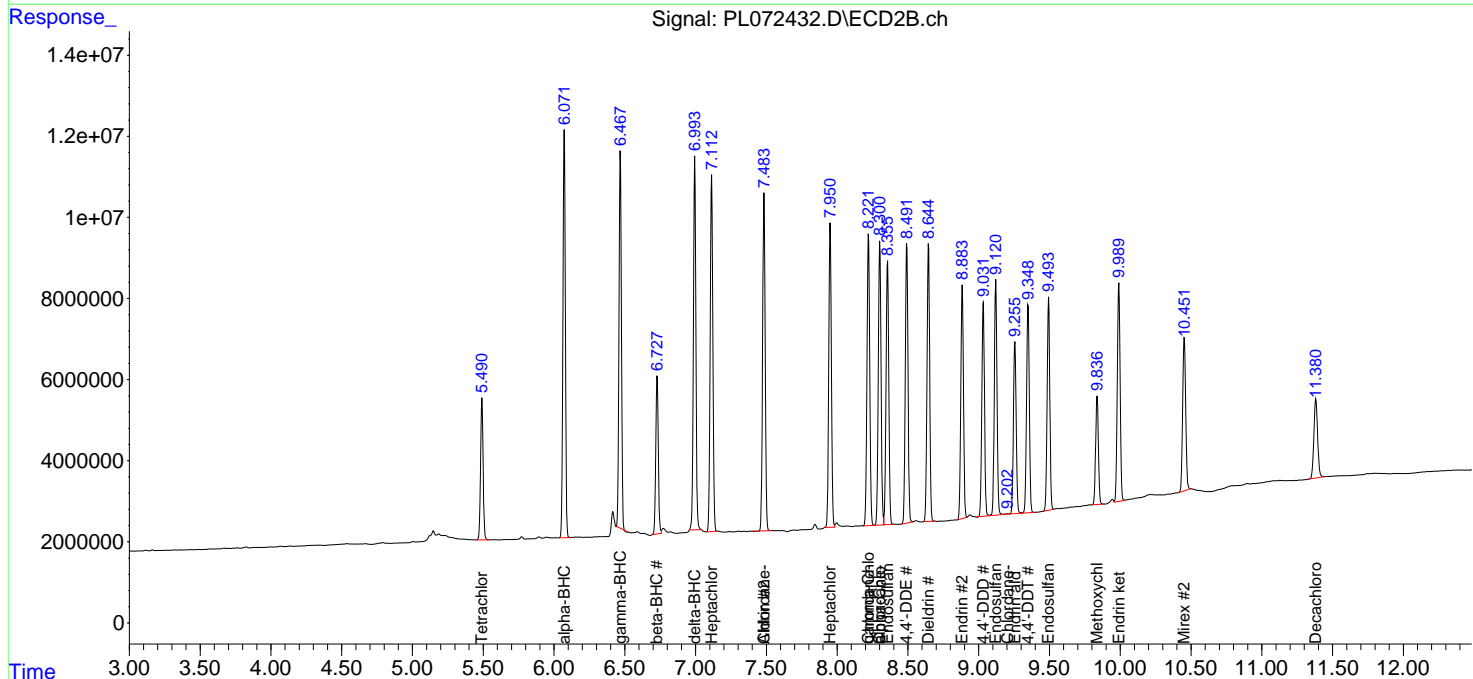
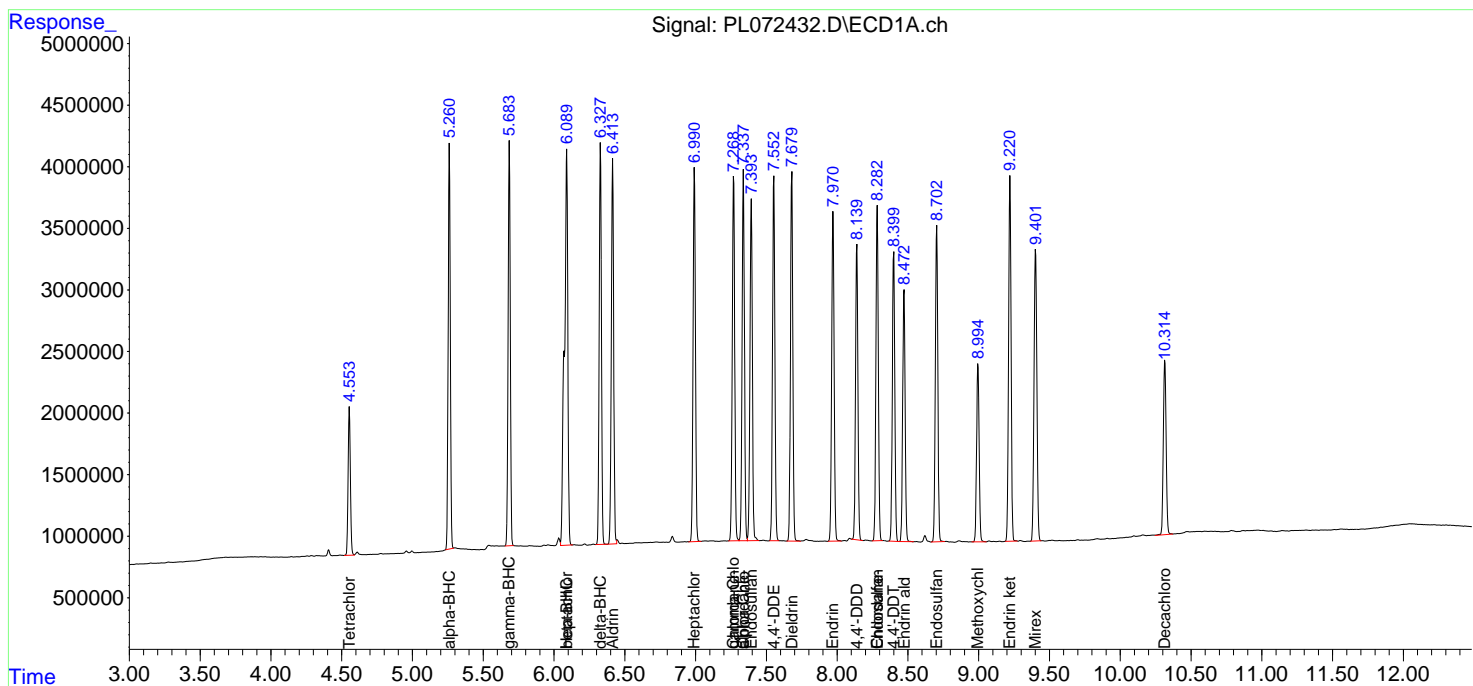
(f)=RT Delta > 1/2 Window (#)=Amounts differ by > 25% (m)=manual int.

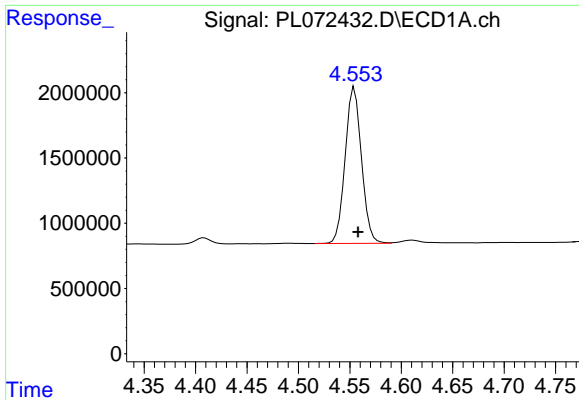
Data Path : Z:\pestpcbsrv\HPCHEM1\ECD_L\Data\PL072432\
 Data File : PL072432.D
 Signal(s) : Signal #1: ECD1A.ch Signal #2: ECD2B.ch
 Acq On : 03 Feb 2022 12:57
 Operator : AR\AJ
 Sample : PB142453BS
 Misc :
 ALS Vial : 6 Sample Multiplier: 1

Instrument :
 ECD_L
 ClientSampleId :

Integration File signal 1: autoint1.e
 Integration File signal 2: autoint2.e
 Quant Time: Feb 04 04:56:31 2022
 Quant Method : Z:\pestpcbsrv\HPCHEM1\ECD_L\methods\PL011722.M
 Quant Title : GC Extractables
 QLast Update : Tue Jan 18 10:53:59 2022
 Response via : Initial Calibration
 Integrator: ChemStation

Volume Inj. : 1 µl
 Signal #1 Phase : ZB-MR2 Signal #2 Phase: ZB-MR1
 Signal #1 Info : 30M x 0.32mm x0.2 Signal #2 Info : 30M x 0.32mm x0.5µm

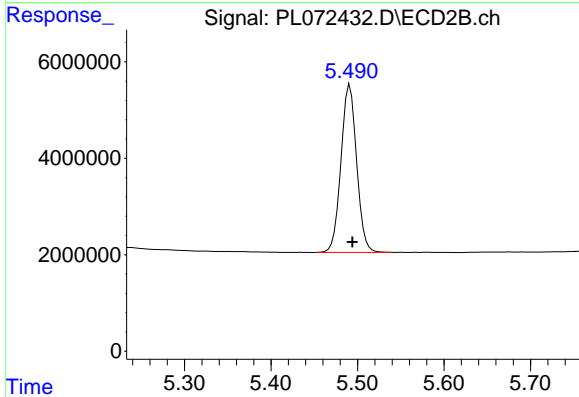




#1 Tetrachloro-m-xylene

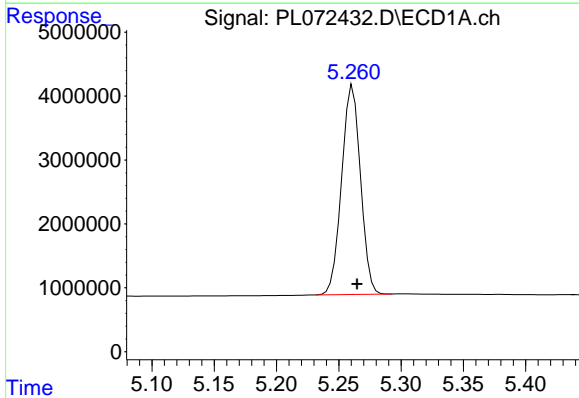
R.T.: 4.555 min
 Delta R.T.: -0.003 min
 Response: 13209295
 Conc: 23.79 ng/ml

Instrument :
 ECD_L
 ClientSampleId :



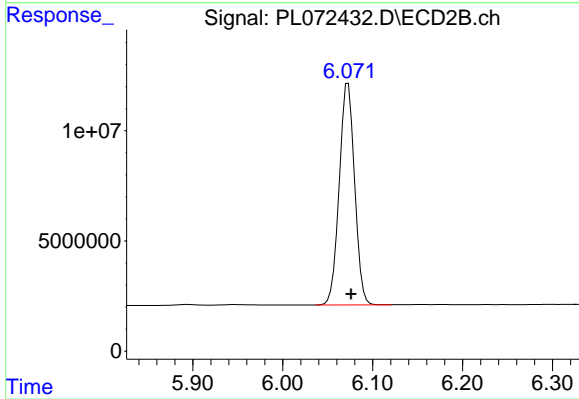
#1 Tetrachloro-m-xylene

R.T.: 5.491 min
 Delta R.T.: -0.003 min
 Response: 43497233
 Conc: 26.78 ng/ml



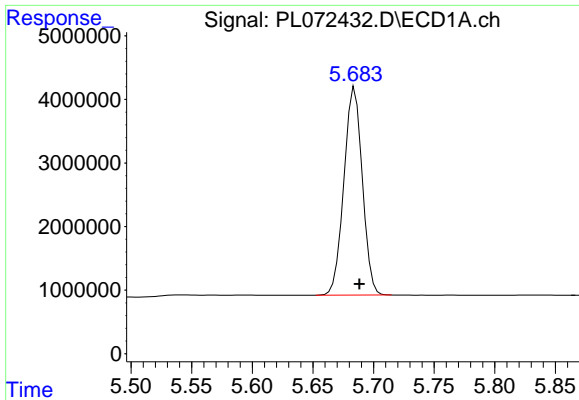
#2 alpha-BHC

R.T.: 5.261 min
 Delta R.T.: -0.003 min
 Response: 34662359
 Conc: 44.83 ng/ml



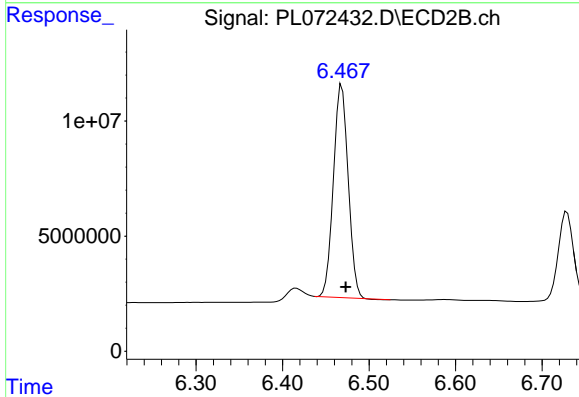
#2 alpha-BHC

R.T.: 6.073 min
 Delta R.T.: -0.003 min
 Response: 119351822
 Conc: 49.46 ng/ml

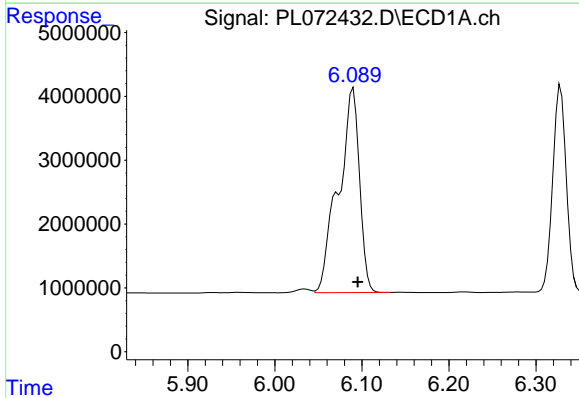


#3 gamma-BHC (Lindane)
 R.T.: 5.685 min
 Delta R.T.: -0.004 min
 Response: 34482920
 Conc: 45.73 ng/ml

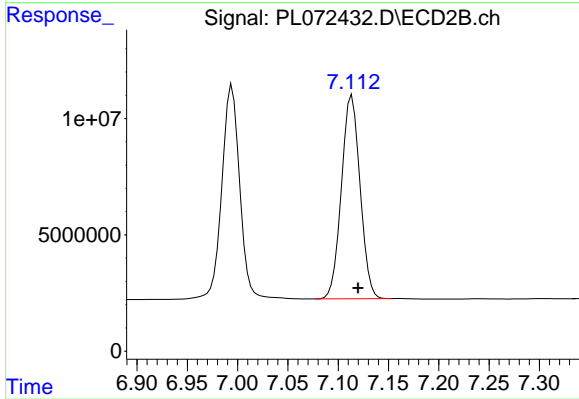
Instrument :
 ECD_L
 ClientSampleId :



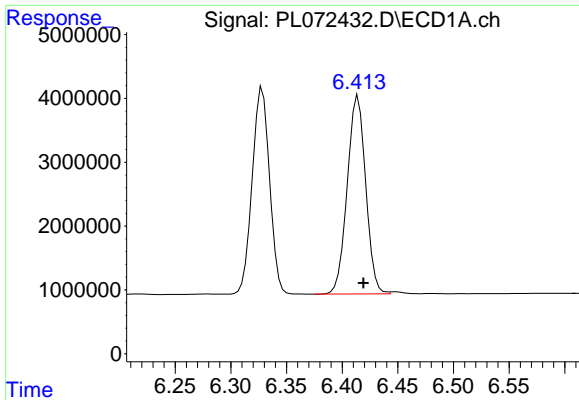
#3 gamma-BHC (Lindane)
 R.T.: 6.469 min
 Delta R.T.: -0.004 min
 Response: 109042111
 Conc: 48.46 ng/ml



#4 Heptachlor
 R.T.: 6.090 min
 Delta R.T.: -0.005 min
 Response: 53697362
 Conc: 62.24 ng/ml

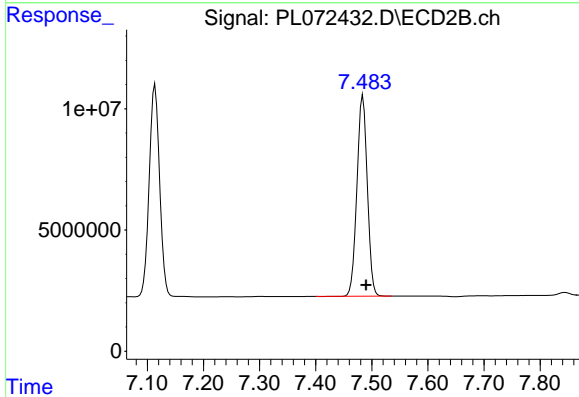


#4 Heptachlor
 R.T.: 7.114 min
 Delta R.T.: -0.006 min
 Response: 112655916
 Conc: 48.59 ng/ml

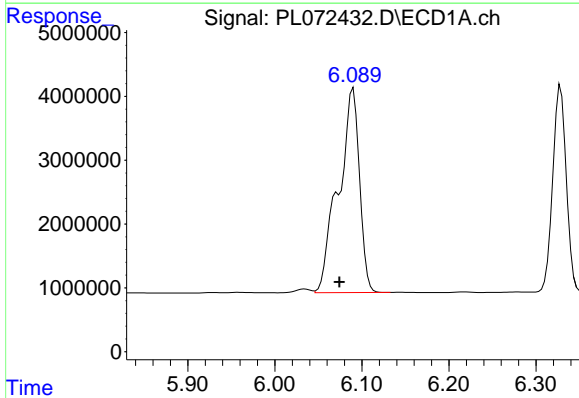


#5 Aldrin
 R.T.: 6.414 min
 Delta R.T.: -0.005 min
 Response: 35853572
 Conc: 45.41 ng/ml

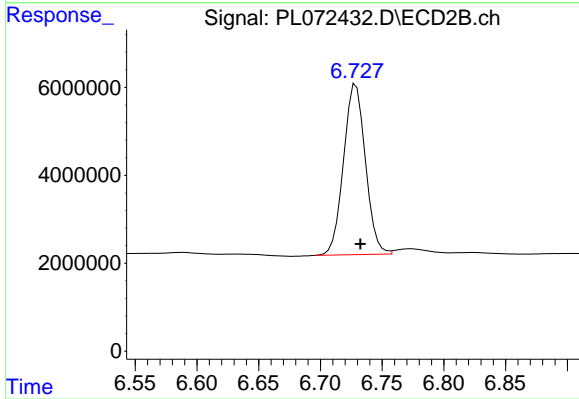
Instrument :
 ECD_L
 ClientSampleId :



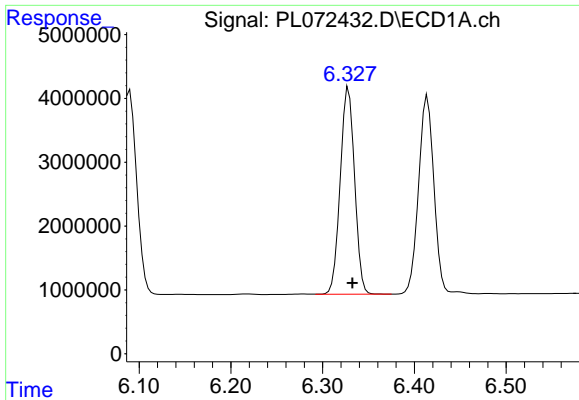
#5 Aldrin
 R.T.: 7.484 min
 Delta R.T.: -0.006 min
 Response: 106680999
 Conc: 48.25 ng/ml



#6 beta-BHC
 R.T.: 6.090 min
 Delta R.T.: 0.016 min
 Response: 53697362
 Conc: 162.44 ng/ml



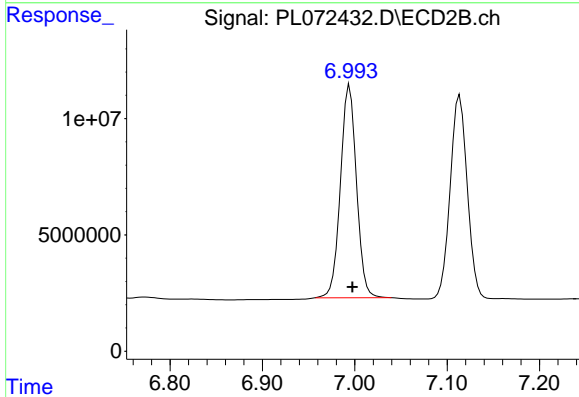
#6 beta-BHC
 R.T.: 6.729 min
 Delta R.T.: -0.004 min
 Response: 47835402
 Conc: 48.31 ng/ml



#7 delta-BHC

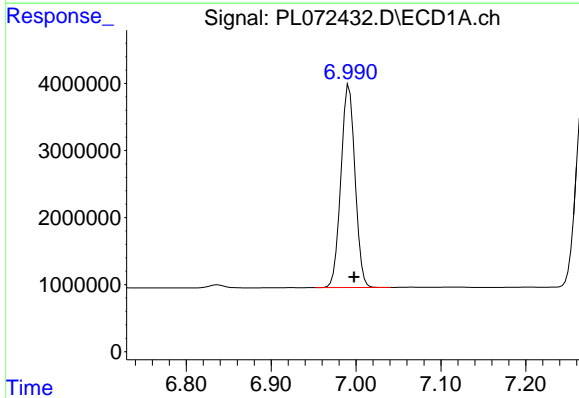
R.T.: 6.328 min
 Delta R.T.: -0.004 min
 Response: 35161037
 Conc: 44.39 ng/ml

Instrument :
 ECD_L
 ClientSampleId :



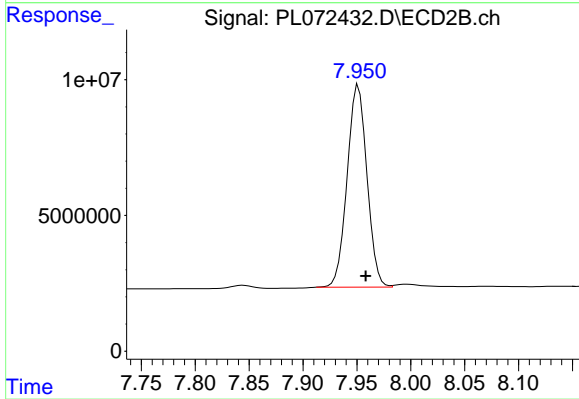
#7 delta-BHC

R.T.: 6.994 min
 Delta R.T.: -0.003 min
 Response: 110478364
 Conc: 44.90 ng/ml



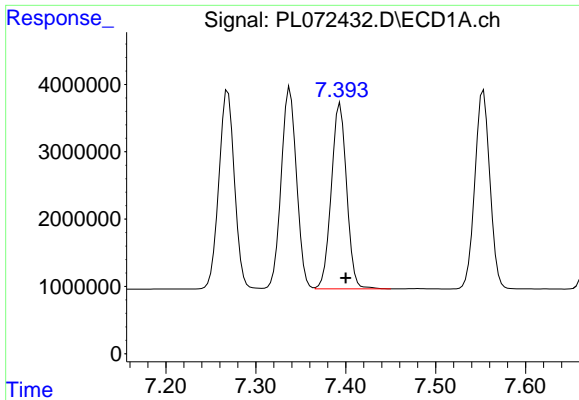
#8 Heptachlor epoxide

R.T.: 6.992 min
 Delta R.T.: -0.006 min
 Response: 34874453
 Conc: 45.81 ng/ml



#8 Heptachlor epoxide

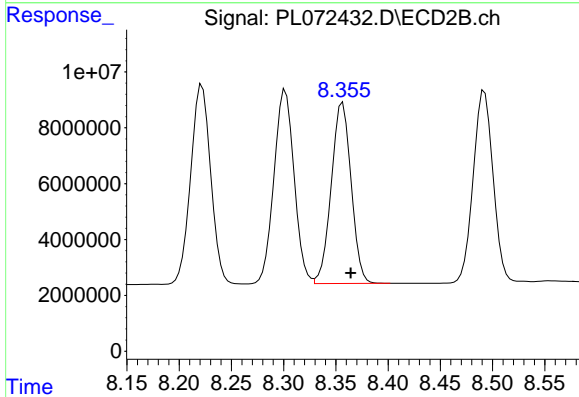
R.T.: 7.952 min
 Delta R.T.: -0.007 min
 Response: 95479218
 Conc: 47.68 ng/ml



#9 Endosulfan I

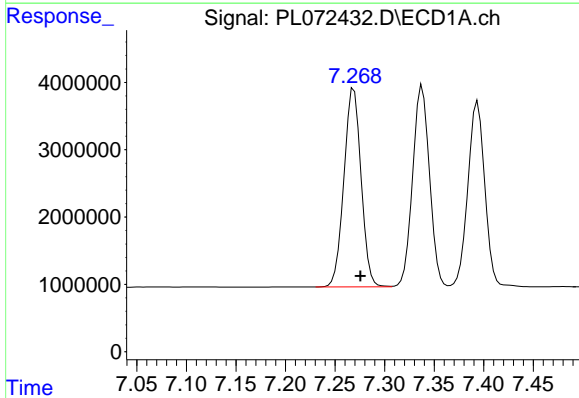
R.T.: 7.394 min
 Delta R.T.: -0.006 min
 Response: 32725538
 Conc: 46.05 ng/ml

Instrument :
 ECD_L
 ClientSampleId :



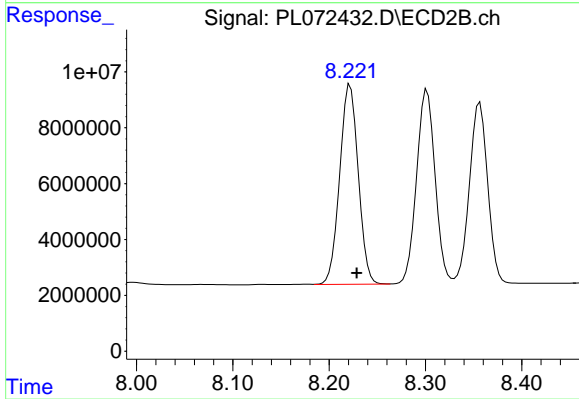
#9 Endosulfan I

R.T.: 8.357 min
 Delta R.T.: -0.008 min
 Response: 85681170
 Conc: 47.34 ng/ml



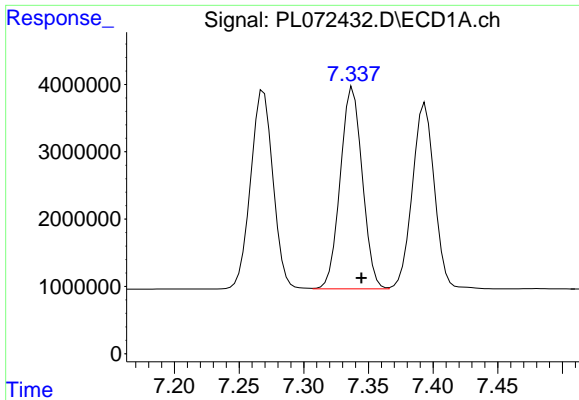
#10 gamma-Chlordane

R.T.: 7.269 min
 Delta R.T.: -0.006 min
 Response: 35543914
 Conc: 45.24 ng/ml



#10 gamma-Chlordane

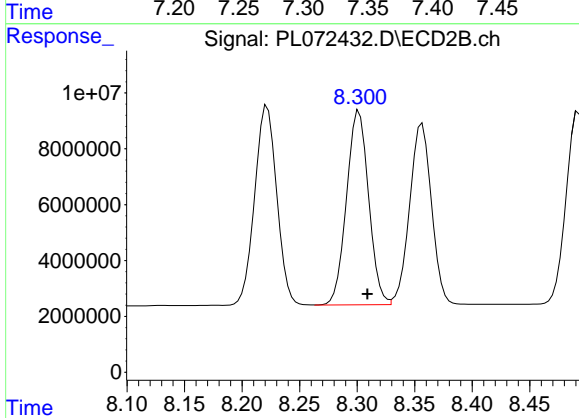
R.T.: 8.222 min
 Delta R.T.: -0.007 min
 Response: 95498717
 Conc: 47.26 ng/ml



#11 alpha-Chlordane

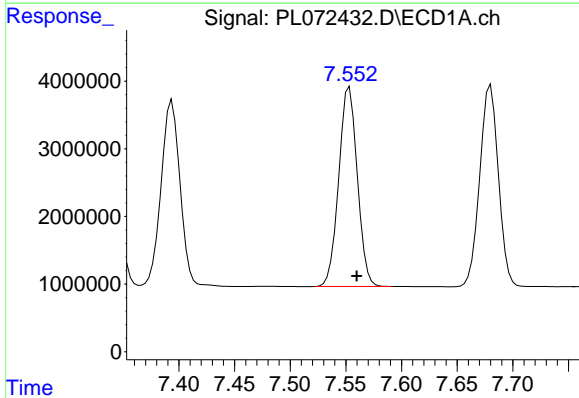
R.T.: 7.338 min
 Delta R.T.: -0.006 min
 Response: 35496437
 Conc: 45.25 ng/ml

Instrument :
 ECD_L
 ClientSampleId :



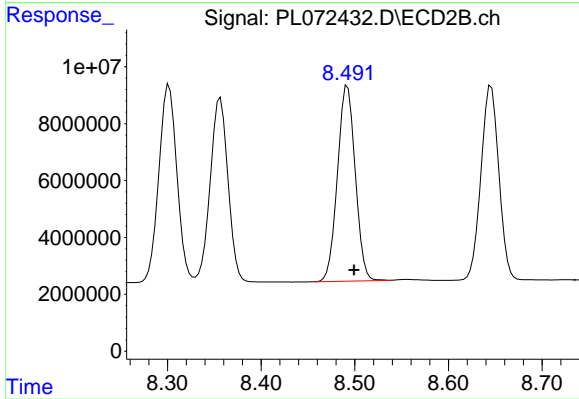
#11 alpha-Chlordane

R.T.: 8.302 min
 Delta R.T.: -0.007 min
 Response: 93415580
 Conc: 47.11 ng/ml



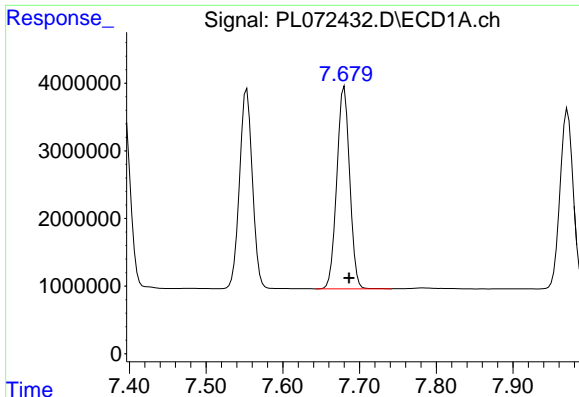
#12 4,4'-DDE

R.T.: 7.553 min
 Delta R.T.: -0.007 min
 Response: 34253148
 Conc: 47.44 ng/ml



#12 4,4'-DDE

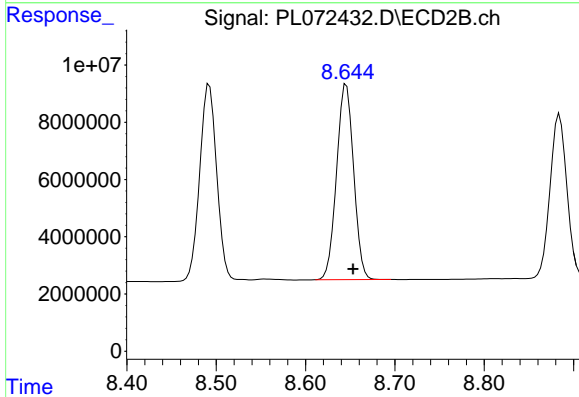
R.T.: 8.492 min
 Delta R.T.: -0.007 min
 Response: 90800695
 Conc: 48.01 ng/ml



#13 Dieldrin

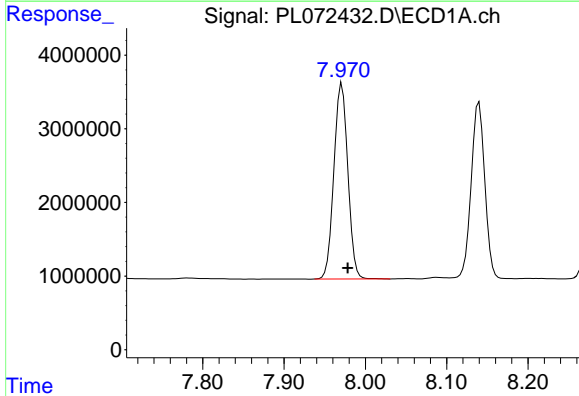
R.T.: 7.680 min
 Delta R.T.: -0.006 min
 Response: 34910346
 Conc: 46.08 ng/ml

Instrument :
 ECD_L
 ClientSampleId :



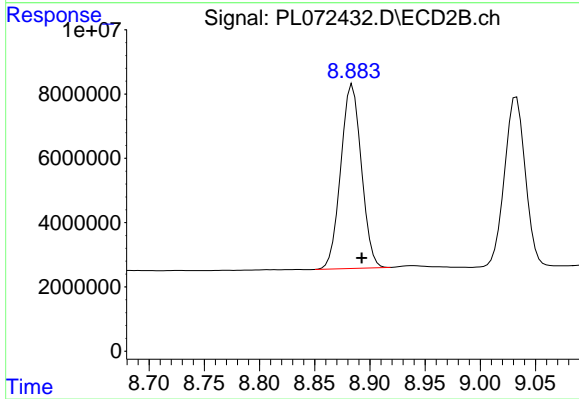
#13 Dieldrin

R.T.: 8.646 min
 Delta R.T.: -0.008 min
 Response: 90655608
 Conc: 46.14 ng/ml



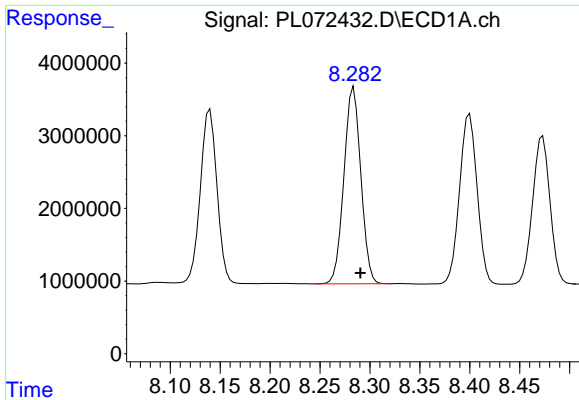
#14 Endrin

R.T.: 7.971 min
 Delta R.T.: -0.007 min
 Response: 31711830
 Conc: 45.26 ng/ml



#14 Endrin

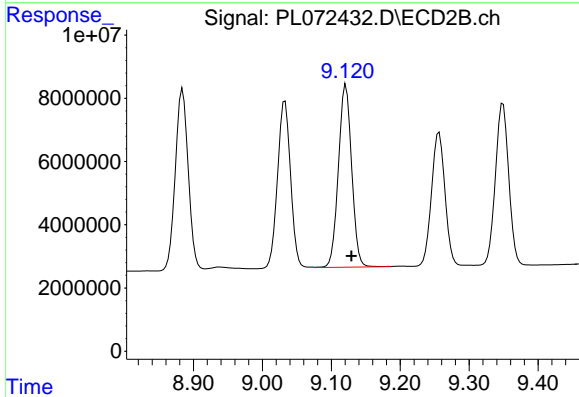
R.T.: 8.884 min
 Delta R.T.: -0.009 min
 Response: 74389021
 Conc: 44.87 ng/ml



#15 Endosulfan II

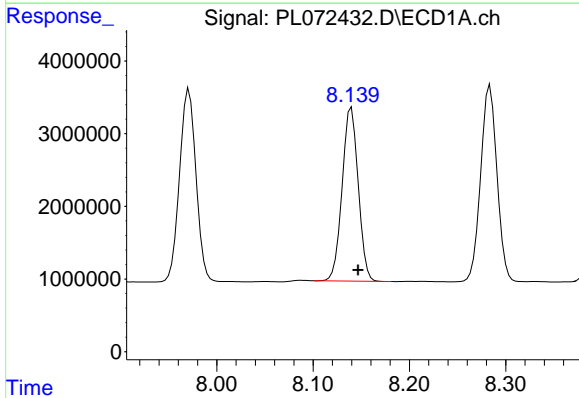
R.T.: 8.284 min
 Delta R.T.: -0.007 min
 Response: 31852794
 Conc: 42.84 ng/ml

Instrument :
 ECD_L
 ClientSampleId :



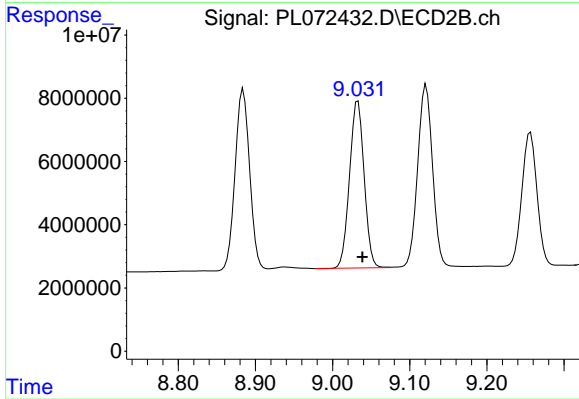
#15 Endosulfan II

R.T.: 9.121 min
 Delta R.T.: -0.008 min
 Response: 77245943
 Conc: 45.04 ng/ml



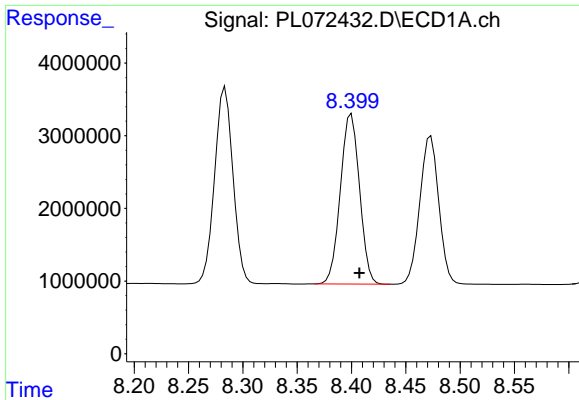
#16 4,4'-DDD

R.T.: 8.140 min
 Delta R.T.: -0.007 min
 Response: 27650828
 Conc: 47.17 ng/ml



#16 4,4'-DDD

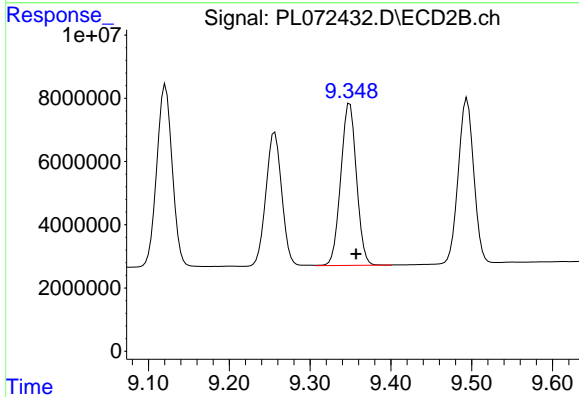
R.T.: 9.033 min
 Delta R.T.: -0.006 min
 Response: 69294047
 Conc: 48.46 ng/ml



#17 4,4'-DDT

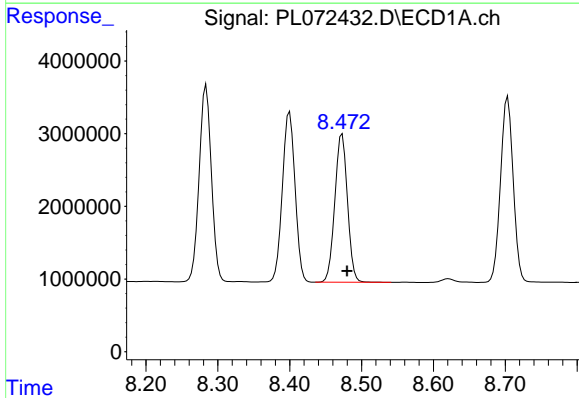
R.T.: 8.400 min
 Delta R.T.: -0.007 min
 Response: 28712874
 Conc: 43.24 ng/ml

Instrument :
 ECD_L
 ClientSampleId :



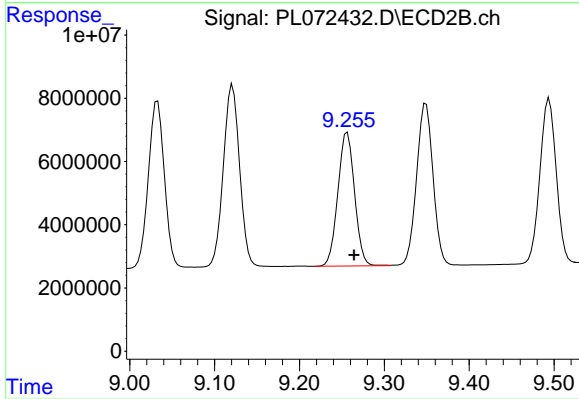
#17 4,4'-DDT

R.T.: 9.349 min
 Delta R.T.: -0.008 min
 Response: 69100523
 Conc: 43.72 ng/ml



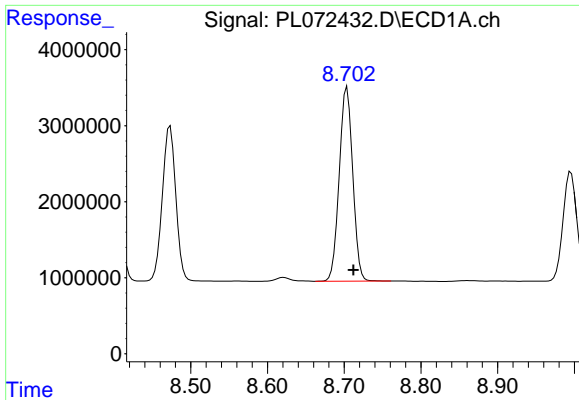
#18 Endrin aldehyde

R.T.: 8.473 min
 Delta R.T.: -0.007 min
 Response: 24851619
 Conc: 43.62 ng/ml



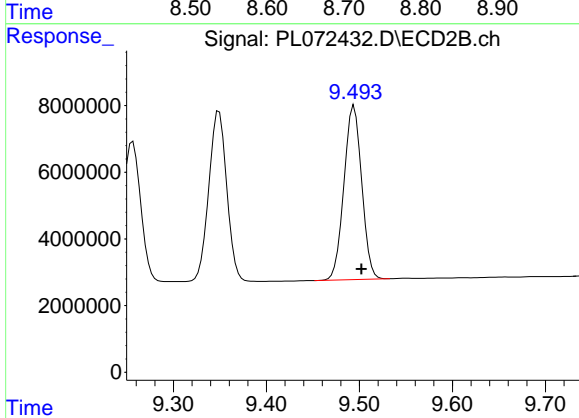
#18 Endrin aldehyde

R.T.: 9.256 min
 Delta R.T.: -0.008 min
 Response: 57590426
 Conc: 46.39 ng/ml

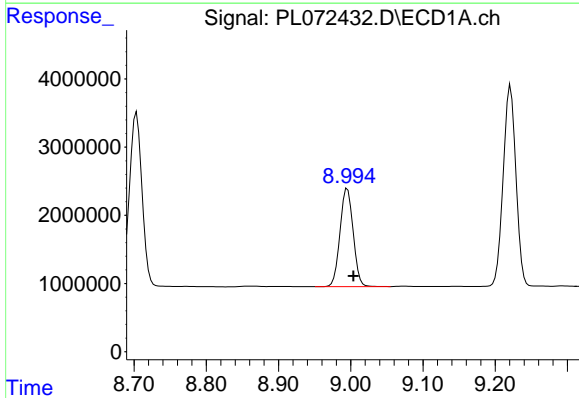


#19 Endosulfan Sulfate
 R.T.: 8.704 min
 Delta R.T.: -0.008 min
 Response: 31245137
 Conc: 42.62 ng/ml

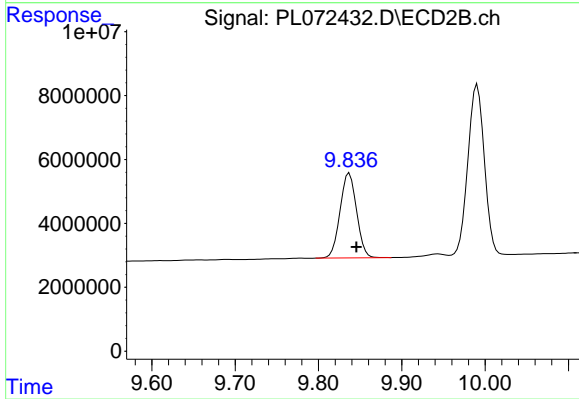
Instrument :
 ECD_L
 ClientSampleId :



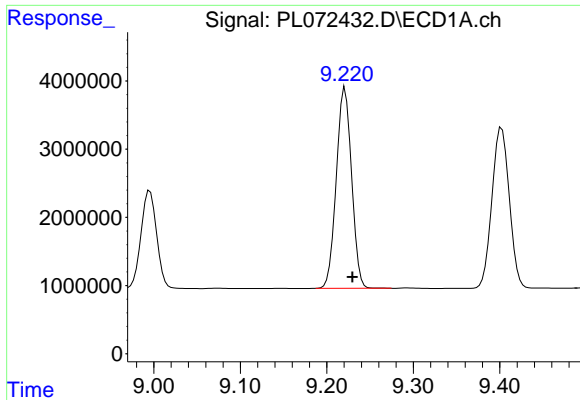
#19 Endosulfan Sulfate
 R.T.: 9.494 min
 Delta R.T.: -0.008 min
 Response: 69279159
 Conc: 44.38 ng/ml



#20 Methoxychlor
 R.T.: 8.995 min
 Delta R.T.: -0.008 min
 Response: 18123641
 Conc: 42.96 ng/ml



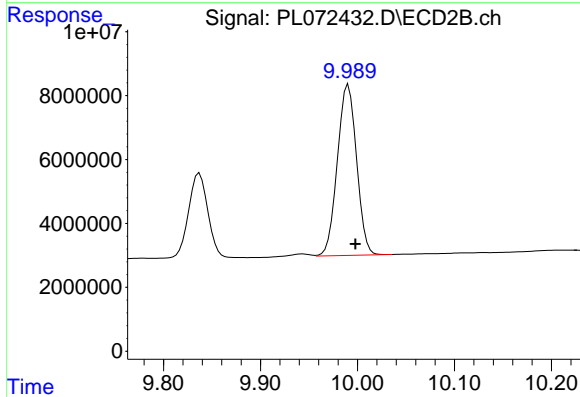
#20 Methoxychlor
 R.T.: 9.837 min
 Delta R.T.: -0.008 min
 Response: 36570977
 Conc: 44.15 ng/ml



#21 Endrin ketone

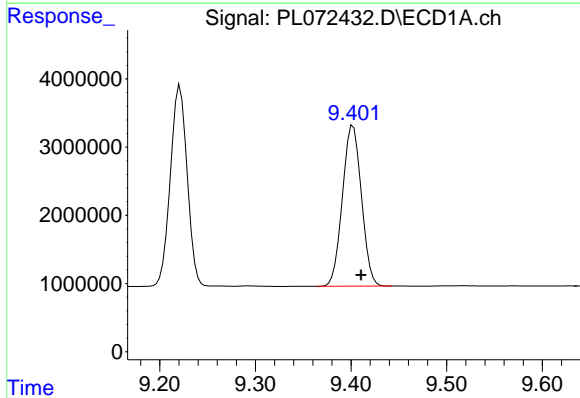
R.T.: 9.221 min
 Delta R.T.: -0.008 min
 Response: 35983813
 Conc: 43.21 ng/ml

Instrument :
 ECD_L
 ClientSampleId :



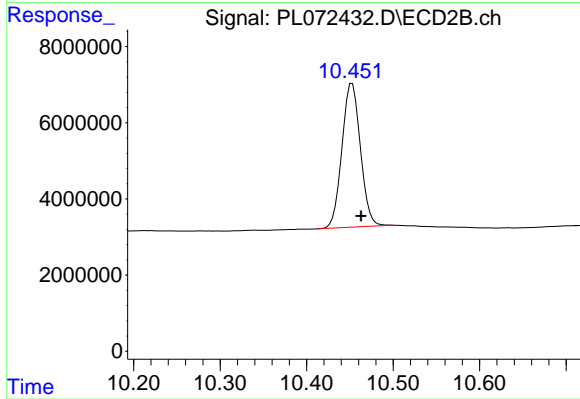
#21 Endrin ketone

R.T.: 9.991 min
 Delta R.T.: -0.007 min
 Response: 73634948
 Conc: 44.49 ng/ml



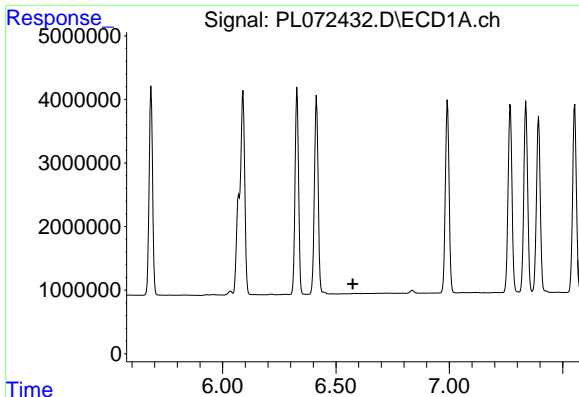
#22 Mirex

R.T.: 9.402 min
 Delta R.T.: -0.008 min
 Response: 32655210
 Conc: 44.22 ng/ml



#22 Mirex

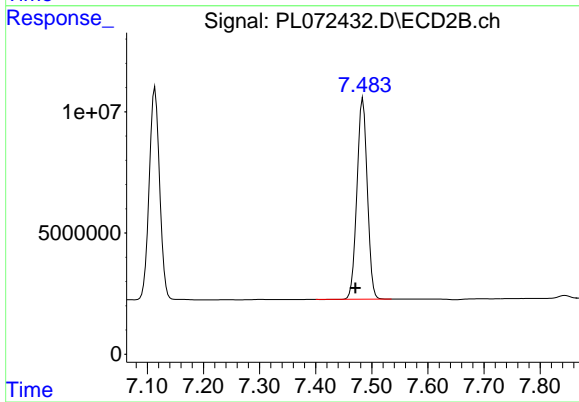
R.T.: 10.453 min
 Delta R.T.: -0.010 min
 Response: 55795411
 Conc: 44.72 ng/ml



#24 Chlordane-2

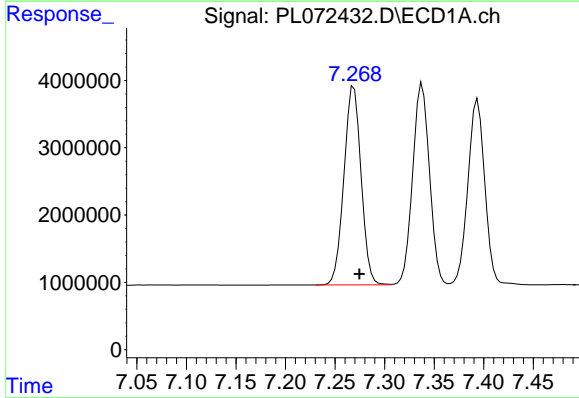
R.T.: 0.000 min
 Exp R.T.: 6.574 min
 Response: 0
 Conc: N.D.

Instrument :
 ECD_L
 ClientSampleId :



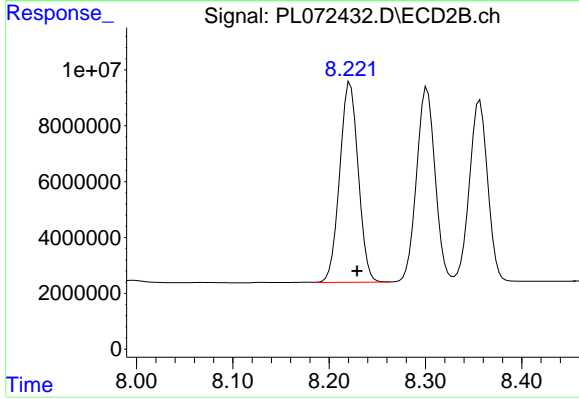
#24 Chlordane-2

R.T.: 7.484 min
 Delta R.T.: 0.013 min
 Response: 106680999
 Conc: 1526.32 ng/ml



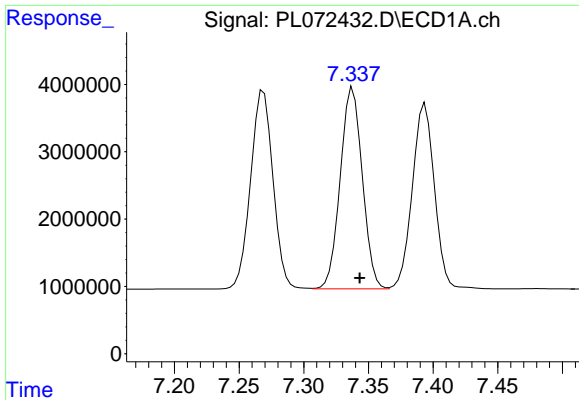
#25 Chlordane-3

R.T.: 7.269 min
 Delta R.T.: -0.005 min
 Response: 35543914
 Conc: 464.57 ng/ml



#25 Chlordane-3

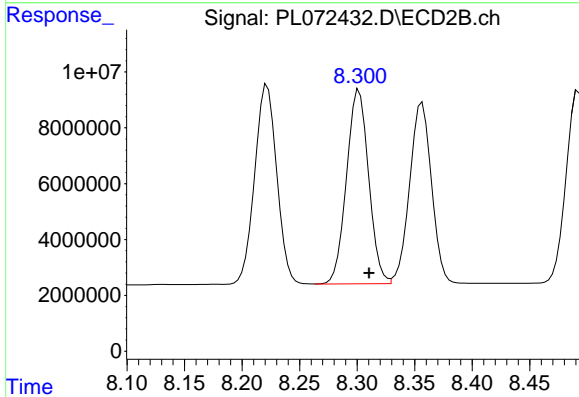
R.T.: 8.222 min
 Delta R.T.: -0.007 min
 Response: 95498717
 Conc: 343.73 ng/ml



#26 Chlordane-4

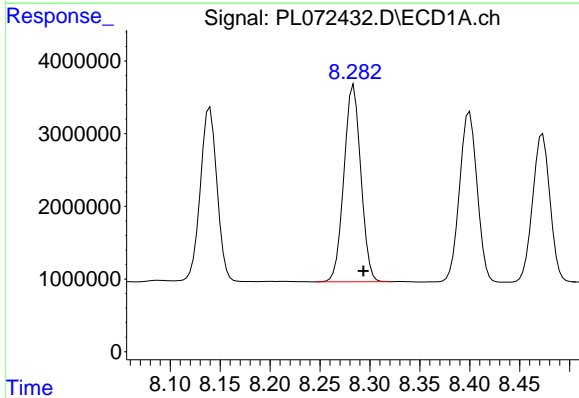
R.T.: 7.338 min
 Delta R.T.: -0.005 min
 Response: 35496437
 Conc: 430.24 ng/ml

Instrument :
 ECD_L
 ClientSampleId :



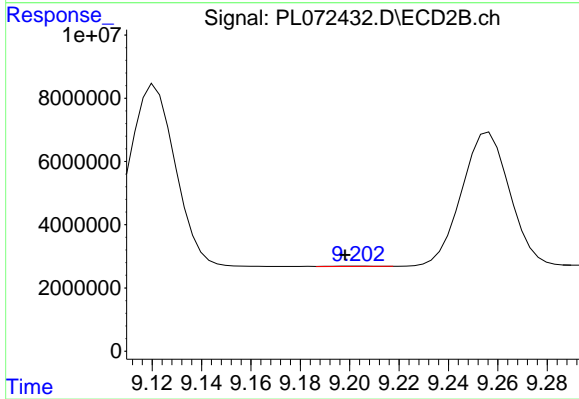
#26 Chlordane-4

R.T.: 8.302 min
 Delta R.T.: -0.009 min
 Response: 93415580
 Conc: 281.31 ng/ml



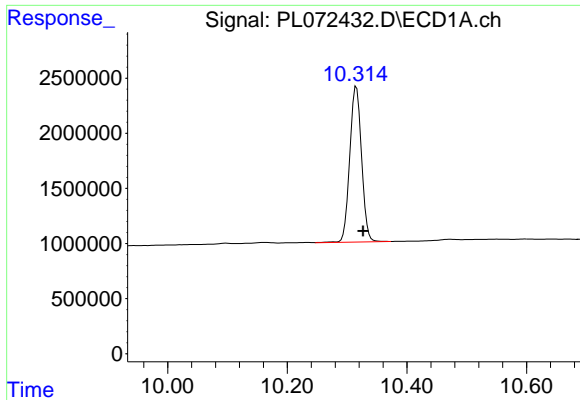
#27 Chlordane-5

R.T.: 8.284 min
 Delta R.T.: -0.009 min
 Response: 31852794
 Conc: 1092.96 ng/ml



#27 Chlordane-5

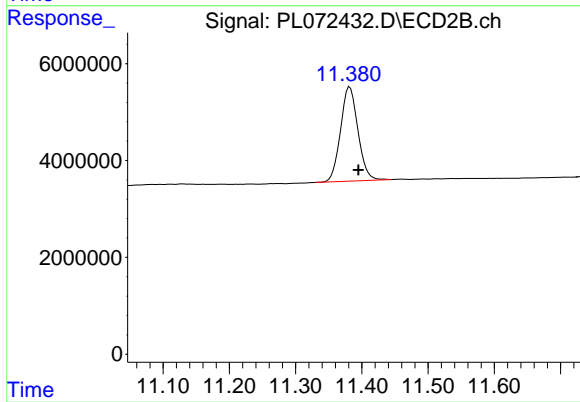
R.T.: 9.204 min
 Delta R.T.: 0.005 min
 Response: 149068
 Conc: 2.44 ng/ml



#28 Decachlorobiphenyl

R.T.: 10.316 min
Delta R.T.: -0.011 min
Response: 19309611
Conc: 21.73 ng/ml

Instrument :
ECD_L
ClientSampleId :



#28 Decachlorobiphenyl

R.T.: 11.382 min
Delta R.T.: -0.013 min
Response: 35550903
Conc: 22.03 ng/ml